

RECOMMENDED SIRE DIRECTORY

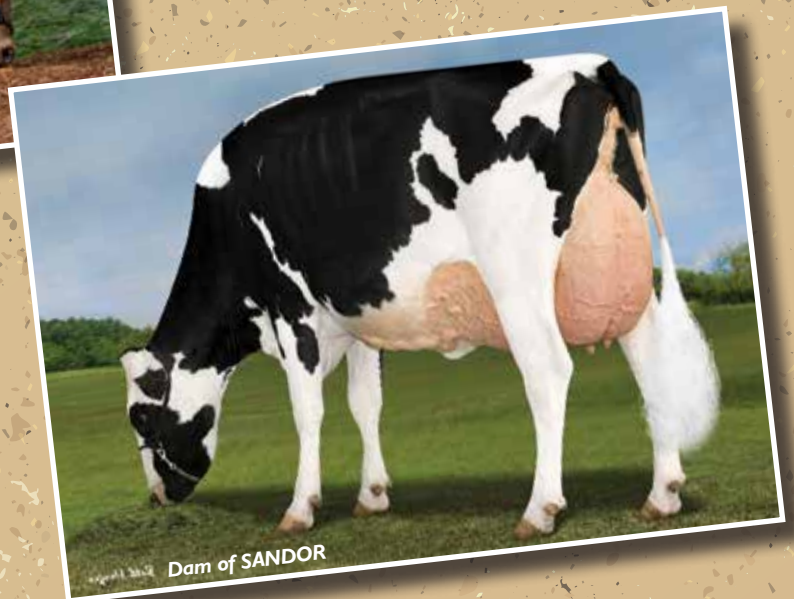
SPRING 2019



NATIONAL HERD DEVELOPMENT



Grand Dam of KAZAMM



Dam of SANDOR

YOUR HERD, OUR COMMITMENT.

Our trading terms and conditions can be viewed at
www.nationalherd.com.au



Red River

AUTHENTIC AUSSIE KNOW HOW
BUILT TO LAST



**DESIGN, DELIVERY
& INSTALLATION**



• Cattle Yards • Cattle Handling Equipment

Northern Victoria:

Christian Hickey - 0428 511 628

South Australia:

Kent Llewellyn - 0417 821 179

Western District:

Chris Morris - 0427 887 951

For more information visit: www.nationalherd.com.au

ALL MIGHTY MOGUL SONS

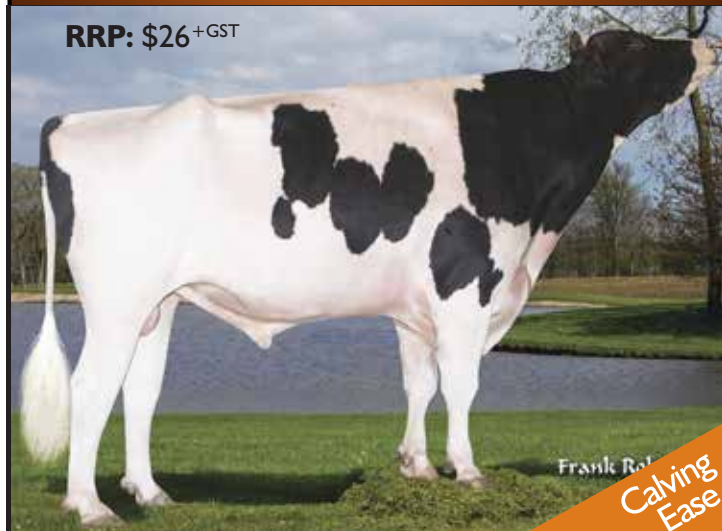
MOOKIE

- 14HO07328

A2/A2
WWS

Coastal-View Mookie

RRP: \$26⁺GST



✓ Elite Production ✓ Components ✓ Medium Size

BPI: 318 HWI: 235 TWI: 350

- When it comes to **FAT** production no one holds a candle to Mookie.
- No.2 Australian Daughter Proven sire.
- Mogul is having the greatest impact on the breed since Blackstar.
- Calving Ease (6.4% USA – 99 % Rel.)

Pedigree: **Mogul x Observer**

NHD Special: \$22⁺GST

PRODUCTION

AUSTRALIAN PROOF

ABV	08/19	442 DTRS
MILK	+364	% TEST
PROTEIN	+20	+0.19
FAT	+68	+0.76

WORKABILITY

MILKING SPEED	102
TEMPERAMENT	102
LIKEABILITY	105
Cell Count	132



OVERALL TYPE	MAMMARY SYSTEM	AUSTRALIAN		DTRS	PROOF		SURVIVAL	DTR. FERT
106	106			62			110	104
STATURE	ANGULARITY	BODY DEPTH	CHEST WIDTH	PIN WIDTH	PIN SET	FOOT ANGLE	LEGS REAR VIEW	
100	102	95	101	97	100	97	101	
UDDER DEPTH	FORE ATT.	REAR ATT. HGT	REAR ATT. WIDTH	CENT LIGAMENT	F TEAT PLACEMENT	R TEAT PLACEMENT	TEAT LENGTH	
108	112	109	96	100	102	99	96	

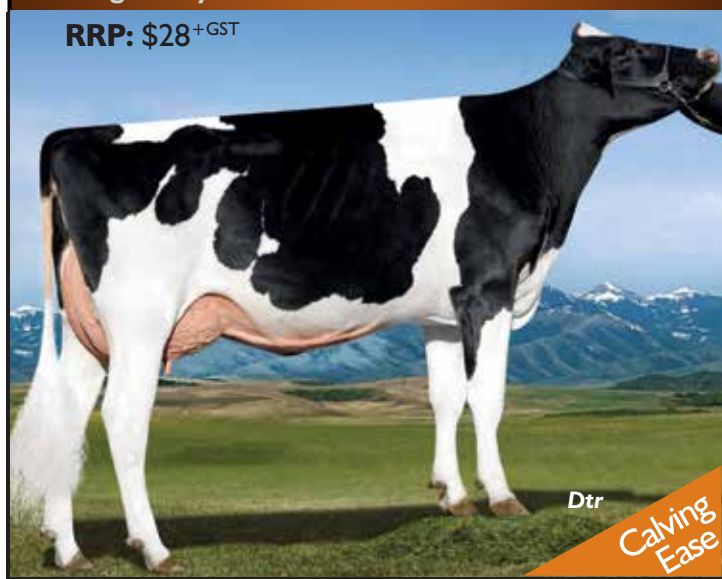
MVP

- 29HO16888

A2/A2
ABS

Seagull-Bay MVP-ET

RRP: \$28⁺GST



✓ Udders ✓ Survival ✓ Components ✓ Likability

BPI: 281 HWI: 199 TWI: 304

- The king for Farmer Satisfaction! No. 5 Australian Daughter Proven sire.
- Medium sized, Strong cows with excellent Feet & Legs.
- Calving Ease (6.3% USA – 99% Rel.)

Pedigree: **Mogul x Planet**

NHD Special: \$25⁺GST

PRODUCTION

AUSTRALIAN PROOF

ABV	08/19	1366 DTRS
MILK	+347	% TEST
PROTEIN	+23	+0.27
FAT	+38	+0.33

WORKABILITY

MILKING SPEED	103
TEMPERAMENT	105
LIKEABILITY	107
Cell Count	122



OVERALL TYPE	MAMMARY SYSTEM	AUSTRALIAN		DTRS	PROOF		SURVIVAL	DTR. FERT.
109	110			253			111	102
STATURE	ANGULARITY	BODY DEPTH	CHEST WIDTH	PIN WIDTH	PIN SET	FOOT ANGLE	LEGS REAR VIEW	
100	107	104	106	96	98	100	110	
UDDER DEPTH	FORE ATT.	REAR ATT. HGT	REAR ATT. WIDTH	CENT. LIGAMENT	F. TEAT PLACEMENT	R. TEAT PLACEMENT	TEAT LENGTH	
104	103	109	109	100	110	102	93	

YOUR HERD, OUR COMMITMENT.

[CORRECTIVE HERD MATING PROGRAM]

- Highly qualified and professional cow evaluators
- Comprehensive and independent advice
- No strings. No gimmicks. No cost.
- Get serious about Herd Improvement... We are!

- Our evaluators visually assess and record the functional conformation traits needing most improvement for each cow
- Temperament and milking speed are also considered if required
- Our Corrective Mating Program also screens for genetic defects based on the cow's pedigree
- Inbreeding automatically avoided
- Our vastly experienced evaluators can assist in the selection of a team of sires to suit your breeding goals and budget
- The program's key objective is to breed profitable, long lasting, easy to work with cows
- Clearly the best way to enhance the value of your A.I. expenditure



Use the right bulls the right way.

BREEDER



SPECIALS

NAME	RRP	SPECIAL
Luck-E Undenied ADMIRAL*	TBA	Order Early
Farnear DELTA-LAMBDA	\$35	\$30
Woodcrest King DOC	\$34	\$32
Val-Bisson DOORMAN	\$60	\$45
Claynook DUPLO	\$45	\$40
Siemers HAWT	\$35	\$32
Aardema IMPACT	\$45	\$32
Cherry-Lily Zip LUSTER-P	\$34	\$32

*SEXED Seman only

NAME	RRP	SPECIAL
Our-Favorite MAFIA	\$30	\$24
Coomboona Zipit MIRAND-PP	\$30	\$25
Our-Favorite ON POINT	\$30	\$25
Morningview RADIO	\$45	\$32
Duckett Crush TATOO	\$34	\$32
Croteau Lesperron UNIX	\$50	\$40
Hoogerhorst Dg Oh RUBELS-RED	\$35	\$32
Riverdown UNSTOPABULL-RED	\$45	\$40

Visit www.nationalherd.com.au for full proofs on the above sires

THE FUTURE IS HERE AND NOW

SUPERDAVE

A2/A2

Warramont Superhero Dave-ET

Genetics Australia

RRP: \$24⁺GST



Pedigree: **Superhero x Doorman** **NHD Special: \$20⁺GST**

PRODUCTION

AUST. GENOMIC PROOF

ABV(g)	08/19	0 DTRS
MILK	-175	% TEST
PROTEIN	+21	+0.50
FAT	+39	+0.67

WORKABILITY

MILKING SPEED	100
TEMPERAMENT	104
LIKEABILITY	104
Cell Count (g)	162

☒ Production ☒ Components ☒ Medium Size

BPI(g): 376 **HWI(g): 297** **TWI(g): 355**

• One of Australia's leading Genomic BPI Sires.

OVERALL TYPE	MAMMARY SYSTEM	AUSTRALIAN		DTRS	GENOMIC		SURVIVAL	DTR. FERT.
102	104			0			108	106
STATURE	ANGULARITY	BODY DEPTH	CHEST WIDTH	PIN WIDTH	PIN SET	FOOT ANGLE	REAR VIEW	
101	99	97	96	104	100	95	97	
UDDER DEPTH	FORE ATT.	REAR ATT. HGT	REAR ATT. WIDTH	CENT LIGAMENT	F. TEAT PLACEMENT	R. TEAT PLACEMENT	TEAT LENGTH	
106	102	103	95	104	110	102	95	

PEMBERTON

A2/A2

Carenda Pemberton

Genetics Australia

RRP: \$24⁺GST



Pedigree: **Perseus x Jacey** **NHD Special: \$20⁺GST**

PRODUCTION

AUST. GENOMIC PROOF

ABV(g)	08/19	0 DTRS
MILK	+189	% TEST
PROTEIN	+23	+0.33
FAT	+21	+0.19

WORKABILITY

MILKING SPEED	101
TEMPERAMENT	103
LIKEABILITY	105
Cell Count (g)	174

☒ Dtr. Fertility ☒ Production ☒ Components

BPI(g): 358 **HWI(g): 294** **TWI(g): 346**

• One of Australia's leading Genomic BPI Sires.

OVERALL TYPE	MAMMARY SYSTEM	AUSTRALIAN		DTRS	GENOMIC		SURVIVAL	DTR. FERT.
105	106			0			109	109
STATURE	ANGULARITY	BODY DEPTH	CHEST WIDTH	PIN WIDTH	PIN SET	FOOT ANGLE	REAR VIEW	
106	99	93	96	106	99	99	99	
UDDER DEPTH	FORE ATT.	REAR ATT. HGT	REAR ATT. WIDTH	CENT LIGAMENT	F TEAT PLACEMENT	R. TEAT PLACEMENT	TEAT LENGTH	
107	101	107	101	105	104	103	97	

REGIONAL



SPECIALS

NAME & DESCRIPTION	RRP	SPECIAL
Kirk Andrews Fon Doo - STGFONDOO	\$28	\$20
BPI(g) 286 USA Type +2.45 USA Mam. +2.20		
<input checked="" type="checkbox"/> Big Milk <input checked="" type="checkbox"/> Longer Teats <input checked="" type="checkbox"/> A2A2		
Edg Door Bentley - BENTLEY	\$24	\$18
BPI(i) 249 USA Type +2.66 USA Mam. +2.47		
<input checked="" type="checkbox"/> Strength <input checked="" type="checkbox"/> Calving Ease (6.7% USA) <input checked="" type="checkbox"/> Sexed Ultra 4 Mil		
Sandy-Valley Belmont - 0200HO03998	\$18	\$15
BPI. 197 Aust Type 104 Aust Mam. 104		
<input checked="" type="checkbox"/> Calving Ease (5.5% USA) <input checked="" type="checkbox"/> A2A2 <input checked="" type="checkbox"/> Smaller Black Cows		
Red Field Doorman Frouke - ENFORCER	\$16	\$12
BPI(g) 309 Aust Type(g) 103 Aust Mam(g). 107		
<input checked="" type="checkbox"/> Dtr Proven <input checked="" type="checkbox"/> Outcross <input checked="" type="checkbox"/> Protein yeil		

NAME & DESCRIPTION	RRP	SPECIAL
Sandy-Valley - LICORICE - 0200HO11154	\$35	\$24
BPI(g) 328 USA Type +2.40 USA Mam. +1.87		
<input checked="" type="checkbox"/> Daughter Proven <input checked="" type="checkbox"/> Coformation <input checked="" type="checkbox"/> Black <input checked="" type="checkbox"/> A2/A2		
Fly-Higher Bayo Mayo - 14HO07842	\$16	\$14
BPI(g) 304 USA Type +2.09 USA Mam. +2.07		
<input checked="" type="checkbox"/> Popular Allrounder <input checked="" type="checkbox"/> A2A2 <input checked="" type="checkbox"/> Good Semen Fertility		
S-S-I Supershot Superfly - 7HO13398	\$20	\$12
BPI(g) 304 Aust Type(i) 100 Aust Mam(i). 104		
<input checked="" type="checkbox"/> Dtr Proven <input checked="" type="checkbox"/> High BPI <input checked="" type="checkbox"/> Calving Ease (5.4% USA) <input checked="" type="checkbox"/> Black <input checked="" type="checkbox"/> A2A2		
Coomboona Ocean Suits - PP - TLGSUITS	\$18	\$12
BPI(g) 227 Aust Type(g) 100 Aust Mam(g). 101		
<input checked="" type="checkbox"/> All Progeny Polled <input checked="" type="checkbox"/> Medium Size <input checked="" type="checkbox"/> High Components		

Visit www.nationalherd.com.au for full proofs on the above sires

No. 1 Dtr Proven & No. 1 Genomic Proven

MAEBULL

A2/A2

Calister Maebull-ET

Genetics Australia

RRP: \$24⁺GST



Dtr.

✓ Rear Teats ✓ Medium Size ✓ Survival ✓ Dtr. Fert

BPI: 323 HWI: 286 TWI: 322

- This high calibre Australian Proven sire is a great choice for those seeking Medium sized cows, Rear Teats further apart and Cell Count improvement.
- High Survival and High Daughter Fertility.
- No. 1 Australian Daughter proven sire.

Pedigree: **Palermo x Shottle**

NHD Special: \$22⁺GST

PRODUCTION

AUSTRALIAN PROOF

ABV	08/19	129 DTRS
MILK	+429	% TEST
PROTEIN	+20	+0.15
FAT	+19	+0.01

WORKABILITY

MILKING SPEED	101
TEMPERAMENT	99
LIKEABILITY	103
Cell Count	192



OVERALL TYPE	MAMMARY SYSTEM	AUSTRALIAN		DTRS	PROOF		SURVIVAL	DTR. FERT
102	101			54			110	111
STATURE	ANGULARITY	BODY DEPTH	CHEST WIDTH	PIN WIDTH	PIN SET	FOOT ANGLE	LEGS REAR VIEW	
99	99	98	101	97	103	95	101	
UDDER DEPTH	FORE ATT.	REAR ATT. HGT	REAR ATT. WIDTH	CENT LIGAMENT	E. TEAT PLACEMENT	R. TEAT PLACEMENT	TEAT LENGTH	
106	107	101	99	95	99	94	102	

PERSUADE

A2/A2

Boghill Glamour Persuade - 29HO17458

ABS

RRP: \$38⁺GST



Calving Ease

Pedigree: **Perseus x Supershot**

NHD Special: \$28⁺GST

PRODUCTION

AUST. GENOMIC PROOF

ABV(g)	08/19	0 DTRS
MILK	526	% TEST
PROTEIN	+27	+0.23
FAT	+24	+0.02
		GTPI 2654

WORKABILITY

MILKING SPEED	102
TEMPERAMENT	103
LIKEABILITY	105
Cell Count (g)	180



4th Dam

OVERALL TYPE	MAMMARY SYSTEM	USA		DTRS	GENOMIC		PROD LIFE	DPR
+1.19	+1.50			0			+7.9	+2.6
STATURE	ANGULARITY	BODY DEPTH	CHEST WIDTH	PIN WIDTH	PIN SET	FOOT ANGLE	LEGS REAR VIEW	
+0.26	+0.52	-0.12	+0.36	+0.71	+0.20	+0.71	-0.66	
UDDER DEPTH	FORE ATT.	REAR ATT. HGT	REAR ATT. WIDTH	CENT LIGAMENT	F. TEAT PLACEMENT	R. TEAT PLACEMENT	TEAT LENGTH	
+0.86	+1.67	+1.96	+1.80	+1.17	+0.42	+0.72	+0.07	

✓ Smaller cows ✓ Teat length ✓ Daughter Fertility

BPI(g): 404 HWI(g): 354 TWI(g): 345

- Smaller cows with excellent Udders.
- No. 1 Australian Genomic sire.
- Calving Ease (5.7% USA - Genomic)

Unbeatabull Dollar Value

PARAMOUNT

Sandy-Valley - I Paramount 0200HO10359 Semex

RRP: \$16^{+GST}



✓ Strength ✓ Teat Length ✓ Shallow Udders

BPI(i): 328 HWI(i): 281 TWI(i): 288

- Paramount production - Paramount value!
- Strength, Capacity and added Teat Length.
- No. 14 Daughter proven sire, Calving Ease (6.6% USA - 66% Rel.)

Pedigree: Joyride x Numero Uno **NHD Special: \$15^{+GST}**

PRODUCTION

INTERBULL PROOF

ABV(i)	08/19	76 DTRS
MILK	26	% TEST
PROTEIN	+12	+0.20
FAT	+30	+0.41
		GTPI 2340

WORKABILITY

MILKING SPEED	103
TEMPERAMENT	101
LIKEABILITY	104
Cell Count (i)	179



OVERALL TYPE	MAMMARY SYSTEM	USA	DTRS	GENOMIC	PROD LIFE	DPR	
+1.58	+1.29		00		+4.8	+1.4	
STATURE	ANGULARITY	BODY DEPTH	CHEST WIDTH	PIN WIDTH	PIN SET	FOOT ANGLE	LEGS REAR VIEW
+2.21	+0.27	+1.29	+1.64	+1.56	+0.54	+2.13	+1.23
UDDER DEPTH	FORE ATT.	REAR ATT. HGT	REAR ATT. WIDTH	CENT LIGAMENT	F. TEAT PLACEMENT	R. TEAT PLACEMENT	TEAT LENGTH
+2.02	+1.71	+1.71	+1.57	+1.49	+1.52	+1.80	+0.17

SANDOR

- 7HO13811

Telstar SSI Alltm Sandor-ET

WWS

RRP: \$26^{+GST}



✓ Production ✓ Strength ✓ Dtr. Fertility

BPI(g): 289 HWI(g): 240 TWI(g): 259

- More Chest Width than stature, what everyone is looking for these days.
- One of the best for Productive Life, exceptional Daughter Fertility.
- If you don't breed for higher Daughter Fertility – You won't achieve it!
- Calving Ease (5.9% USA - 94% Rel.)

Pedigree: Alltime x Montross **NHD Special: \$15^{+GST}**

PRODUCTION

AUST. GENOMIC PROOF

ABV(g)	08/19	00 DTRS
MILK	+488	% TEST
PROTEIN	+22	+0.16
FAT	+19	-0.02
		GTPI 2586

WORKABILITY

MILKING SPEED	102
TEMPERAMENT	103
LIKEABILITY	104
Cell Count (g)	158



OVERALL TYPE	MAMMARY SYSTEM	USA		DTRS	GENOMIC		PROD LIFE	DPR
+1.53	+1.98			00			+6.5	+3.2
STATURE	ANGULARITY	BODY DEPTH	CHEST WIDTH	PIN WIDTH	PIN SET	FOOT ANGLE	LEGS REAR VIEW	
+1.30	-0.45	+0.54	+1.50	-0.15	+0.60	+2.15	+0.20	
UDDER DEPTH	FORE ATT.	REAR ATT. HGT	REAR ATT. WIDTH	CENT LIGAMENT	F TEAT PLACEMENT	R. TEAT PLACEMENT	TEAT LENGTH	
+1.83	+2.34	+2.64	+2.43	+1.24	+1.47	+1.50	-0.26	

\$18 and Bullet Proof

TLGBRINX - P

Coomboona Superhero Brinx-IMP-ET P

TLG

RRP: \$26^{+GST}



Family member
Patty Jones

Pedigree: **Superhero x Boastful**

NHD Special: \$18^{+GST}

AUST. GENOMIC PROOF

PRODUCTION

ABV(g)	08/19	0 DTRS
MILK	631	% TEST
PROTEIN	+19	+0.04
FAT	+13	-0.21
		GTPI 2534

WORKABILITY

MILKING SPEED	101
TEMPERAMENT	103
LIKEABILITY	105
Cell Count (g)	163

✓ Type ✓ Udders ✓ Milk flow

BPI(g): 305 HWI(g): 281 TWI(g): 298

- 50% of progeny polled.
- Outstanding Type with sensational Udders.

OVERALL TYPE	MAMMARY SYSTEM	USA		DTRS	GENOMIC		PROD LIFE	DPR
+2.39	+2.37			0			+6.1	+1.5
STATURE	ANGULARITY	BODY DEPTH	CHEST WIDTH	PIN WIDTH	PIN SET	FOOT ANGLE	LEGS REAR VIEW	
+3.14	+0.78	+0.72	+1.34	+2.02	+0.90	+1.34	+0.74	
UDDER DEPTH	FORE ATT.	REAR ATT. HGT	REAR ATT. WIDTH	CENT LIGAMENT	F. TEAT PLACEMENT	R. TEAT PLACEMENT	TEAT LENGTH	
+3.33	+3.24	+3.51	+3.23	+1.23	+0.00	-0.02	+0.14	

MINDWELL - 29HO18534

ABS Mindwell-ET

A2/A2
ABS

RRP: \$26^{+GST}



Grand Dam

Calving Ease

Pedigree: **Skyfall x Silver**

NHD Special: \$18^{+GST}

PRODUCTION

AUST. GENOMIC PROOF

WORKABILITY

ABV(g)	08/19	00 DTRS
MILK	164	% TEST
PROTEIN	+11	+0.13
FAT	+47	+0.57
		GTPI 2669

MILKING SPEED	103
TEMPERAMENT	101
LIKEABILITY	105
Cell Count(g)	152

✓ Feet & Legs ✓ Udders ✓ Overall Type

BPI(g): 280 HWI(g): 228 TWI(g): 272

- Tremendous Fat yield with positive Milk flow. Calving Ease (6.5% USA - 95% Rel.)

OVERALL TYPE	MAMMARY SYSTEM	USA	DTRS	GENOMIC		PROD LIFE	DPR
+2.42	+2.28		00			+5.2	+1.1
STATURE	ANGULARITY	BODY DEPTH	CHEST WIDTH	PIN WIDTH	PIN SET	FOOT ANGLE	LEGS REAR VIEW
+2.42	+0.36	+1.03	+1.65	+1.00	-0.20	+2.41	+2.35
UDDER DEPTH	FORE ATT.	REAR ATT. HGT	REAR ATT. WIDTH	CENT LIGAMENT	F. TEAT PLACEMENT	R. TEAT PLACEMENT	TEAT LENGTH
+3.13	+3.21	+3.07	+2.82	+1.01	+0.60	+0.07	-0.26

HOWLER - 29HO18878

Pine-Tree Howler-ET

A2/A2
ABS



Kathy DeBruin
Dam

Pedigree: **Charley x Delta**

RRP: \$18^{+GST}

PRODUCTION

AUST. GENOMIC PROOF

WORKABILITY

ABV(g)	08/19	00 DTRS
MILK	462	% TEST
PROTEIN	+20	+0.13
FAT	+32	+0.17
		GTPI 2723

MILKING SPEED	101
TEMPERAMENT	104
LIKEABILITY	106
Cell Count(g)	167

✓ Workabilities ✓ Production ✓ Shallow Udders

BPI(g): 293 HWI(g): 242 TWI(g): 309

- Medium sized cows with beautiful Udders.

OVERALL TYPE	MAMMARY SYSTEM	USA	DTRS		GENOMIC	PROD LIFE	DPR
+1.64	+2.26		00			+7.8	+1.8
STATURE	ANGULARITY	BODY DEPTH	CHEST WIDTH	PIN WIDTH	PIN SET	FOOT ANGLE	LEGS REAR VIEW
+0.65	+1.08	+0.07	+0.19	+0.96	+0.05	+0.70	+0.55
UDDER DEPTH	FORE ATT.	REAR ATT. HGT	REAR ATT. WIDTH	CENT LIGAMENT	F. TEAT PLACEMENT	R. TEAT PLACEMENT	TEAT LENGTH
+1.71	+2.62	+2.98	+2.74	+0.89	+0.76	+0.84	-0.09

Poll Position !

POINT - P - POINTP

DG R Napoleon PC

Agri-Gene

RRP: \$24^{+GST}



Pedigree: **Powerball P x Numero Uno** **NHD Special: \$18^{+GST}**

PRODUCTION

AUST. GENOMIC PROOF

ABV(g)	08/19	0 DTRS
MILK	350	% TEST
PROTEIN	+18	+0.16
FAT	+18	+0.05

WORKABILITY

MILKING SPEED	103
TEMPERAMENT	102
LIKEABILITY	104
Cell Count (g)	149

✓ Overall Type ✓ Udders ✓ Teat Length

BPI(g): 309 **HWI(g): 284** **TWI(g): 287**

- Fantastic Overall Type and Udders – One of the highest Polled sires for BPI.
- Calving Ease (5.3% USA - Genomic), 50% progeny polled.

OVERALL TYPE	MAMMARY SYSTEM	USA		DTRS	GENOMIC		PROD LIFE	DPR
+2.22	+1.88			0			+2.6	+1.2
STATURE	ANGULARITY	BODY DEPTH	CHEST WIDTH	PIN WIDTH	PIN SET	FOOT ANGLE	LEGS REAR VIEW	
+2.31	+2.13	+0.83	+0.73	+2.14	+0.03	+1.92	+1.31	
UDDER DEPTH	FORE ATT.	REAR ATT. HGT	REAR ATT. WIDTH	CENT LIGAMENT	F. TEAT PLACEMENT	R. TEAT PLACEMENT	TEAT LENGTH	
+1.57	+1.80	+3.29	+3.03	+1.74	+1.16	+0.69	+0.82	

GGIPALETTI - PP RC

Paletti PP

Genetics Australia



Pedigree: **Powerball P x Effect P**

RRP: \$22^{+GST}

PRODUCTION

AUST. GENOMIC PROOF

ABV(g)	08/19	0 DTRS
MILK	455	% TEST
PROTEIN	+20	+0.15
FAT	+20	+0.01

WORKABILITY

MILKING SPEED	101
TEMPERAMENT	101
LIKEABILITY	103
Cell Count (g)	145

✓ Medium Size ✓ All Progeny Polled ✓ Dtr. Fertility

BPI(g): 265 **HWI(g): 234** **TWI(g): 238**

- Fully Polled sire with great Daughter Fertility.
- Calving Ease (104 Australia – Genomic)

OVERALL TYPE	MAMMARY SYSTEM	AUST.		DTRS	GENOMIC		SURVIVAL	DTR. FERT.
100	103			0			109	108
STATURE	ANGULARITY	BODY DEPTH	CHEST WIDTH	PIN WIDTH	PIN SET	FOOT ANGLE	LEGS REAR VIEW	
100	97	93	92	94	99	98	102	
UDDER DEPTH	FORE ATT.	REAR ATT. HGT	REAR ATT. WIDTH	CENT LIGAMENT	F. TEAT PLACEMENT	R. TEAT PLACEMENT	TEAT LENGTH	
106	101	107	100	99	102	102	98	

TLGANSWER - PP

Coomboona Answer Phen - PP

TLG

RRP: \$22^{+GST}



Pedigree: **Answer P x Powerball P** **NHD Special: \$20^{+GST}**

PRODUCTION

AUST. GENOMIC PROOF

ABV(g)	08/19	0 DTRS
MILK	606	% TEST
PROTEIN	+17	+0.01
FAT	+12	-0.21

WORKABILITY

MILKING SPEED	102
TEMPERAMENT	102
LIKEABILITY	105
Cell Count (g)	133

✓ All Progeny Polled ✓ Dtr. Fertility ✓ Rump Angle

BPI(g): 240 **HWI(g): 225** **TWI(g): 201**

- Great combination of high Productive Life and Daughter Fertility.
- Calving Ease (5.9% USA - Genomic)

OVERALL TYPE	MAMMARY SYSTEM	USA		DTRS	GENOMIC		PROD LIFE	DPR
+1.36	+1.51			0			+6.1	+3.1
STATURE	ANGULARITY	BODY DEPTH	CHEST WIDTH	PIN WIDTH	PIN SET	FOOT ANGLE	LEGS REAR VIEW	
+1.41	+1.18	-0.04	+0.35	+0.84	+1.59	+0.55	+0.43	
UDDER DEPTH	FORE ATT.	REAR ATT. HGT	REAR ATT. WIDTH	CENT LIGAMENT	F TEAT PLACEMENT	R. TEAT PLACEMENT	TEAT LENGTH	
+1.21	+1.28	+2.69	+2.47	+0.56	+0.64	+0.70	-0.53	

SELECTED SEXED SEMEN SIRES

PERSEUS - 0200HO10777 A2/A2 Semex

Westcoast Perseus

RRP: \$35+GST



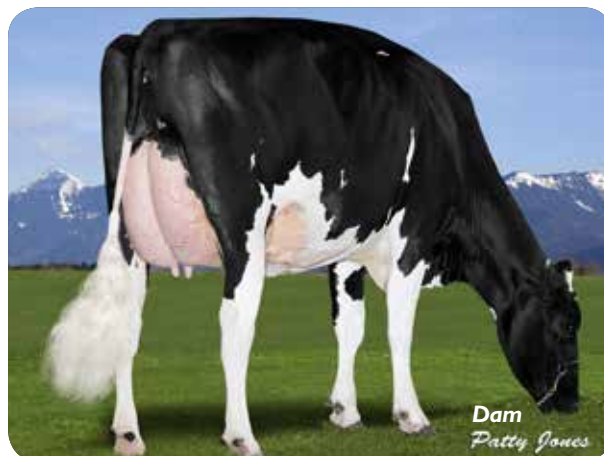
✓ Calving Ease ✓ Production ✓ Cell Count

BPI(g): 369 HWI(g): 305 TWI(g): 321

- Leading Sire of Sons around the world – One of Australia's leading BPI sires.
- Super Calving Ease (4.7% USA – 97% Rel.)
- Sexed Ultra 2 Mil semen RRP \$60 - NHD Special \$50

Pedigree: Penmanship x Doorman NHD Special: \$25+GST
Conventional

PRODUCTION			AUST. GENOMIC PROOF	WORKABILITY	
ABV(g)	08/19		0 DTRS	MILKING SPEED	101
MILK	216	% TEST		TEMPERAMENT	102
PROTEIN	+23	+0.32		LIKEABILITY	105
FAT	+24	+0.22	GTPI 2626	Cell Count (g)	174



OVERALL TYPE	MAMMARY SYSTEM	USA		DTRS	GENOMIC		PROD LIFE	DPR
+2.04	+1.73			0			+5.7	+2.4
STATURE	ANGULARITY	BODY DEPTH	CHEST WIDTH	PIN WIDTH	PIN SET	FOOT ANGLE	LEGS REAR VIEW	
+1.55	+1.00	+0.75	+0.96	+1.34	-0.57	+1.94	+0.73	
UDDER DEPTH	FORE ATT.	REAR ATT. HGT	REAR ATT. WIDTH	CENT LIGAMENT	F. TEAT PLACEMENT	R. TEAT PLACEMENT	TEAT LENGTH	
+2.00	+2.39	+1.97	+1.81	+2.05	+1.17	+1.41	-0.11	

TAILOR - 29HO17706 ABS

De-Su 12128 Tailor-ET

RRP: \$24+GST



✓ Dtr. Fertility ✓ Super Udders ✓ Cell Count

BPI(i): 356 HWI (i): 317 TWI (i): 364

- Australian Dtrs. emulating the great performance of his USA Dtrs.
- Calving Ease (6.8% USA - 98% Rel.)
- Sexcel semen RRP \$50 - NHD Special \$45

Pedigree: La Bron x Shamrock NHD Special: \$18+GST
Conventional

PRODUCTION			INTERBULL PROOF	WORKABILITY	
ABV(i)	08/19		993 DTRS	MILKING SPEED	104
MILK	673	% TEST		TEMPERAMENT	100
PROTEIN	+25	+0.13		LIKEABILITY	104
FAT	+13	-0.23		Cell Count (i)	184



OVERALL TYPE	MAMMARY SYSTEM	INTERBULL		DTRS	PROOF		SURVIVAL	DTR. FERT.
106	108			106			112	110
STATURE	ANGULARITY	BODY DEPTH	CHEST WIDTH	PIN WIDTH	PIN SET	FOOT ANGLE	LEGS REAR VIEW	
106	102	98	95	103	108	95	97	
UDDER DEPTH	FORE ATT.	REAR ATT. HGT	REAR ATT. WIDTH	CENT LIGAMENT	F. TEAT PLACEMENT	R. TEAT PLACEMENT	TEAT LENGTH	
105	105	107	99	111	106	107	101	

SELECTED SEXED SEMEN SIREs

STGGAMMA

Farnear-BH Delta-Gamma-ET

ST Genetics

RRP: \$22^{+GST}



✓ Calving Ease ✓ Udders ✓ Medium Size

BPI(g): 241 **HWI(g): 197** **TWI(g): 225**

- NHD Favourite – Medium sized, amazing Productive Life.
- Picture perfect Udders.
- Calving Ease Specialist (3.8% USA – 93% Rel.)
- Sexed ultra 4 Mil semen RRP \$48 - **NHD Special \$45**

Pedigree: **Delta x Numero Uno**

NHD Special: \$18^{+GST}
Conventional

PRODUCTION

ABV(g)	08/19	0 DTRS
MILK	600	% TEST
PROTEIN	+13	-0.06
FAT	+42	+0.23
GTPI 2567		

AUST. GENOMIC PROOF

WORKABILITY

MILKING SPEED	101
TEMPERAMENT	101
LIKEABILITY	103
Cell Count (g)	155



OVERALL TYPE	MAMMARY SYSTEM	USA		DTRS	GENOMIC		PROD LIFE	DPR
+1.77	+2.47			0			+7.0	+0.8
STATURE	ANGULARITY	BODY DEPTH	CHEST WIDTH	PIN WIDTH	PIN SET	FOOT ANGLE	LEGS REAR VIEW	
+0.90	+0.81	+0.21	+0.35	+0.74	+0.63	+1.39	+0.71	
UDDER DEPTH	FORE ATT.	REAR ATT. HGT	REAR ATT. WIDTH	CENT LIGAMENT	F. TEAT PLACEMENT	R. TEAT PLACEMENT	TEAT LENGTH	
+1.99	+2.19	+3.43	+3.16	+1.59	+1.02	+1.01	-0.22	

NIGHTIME

Mr KB Nightime 166-ET

A2/A2

Agri-Gene

Sexed only



✓ Udders ✓ Overall Type ✓ Feet & Legs

BPI(g): 267 **HWI(g): 226** **TWI(g): 244**

- Dynamic improver for Overall Type and Mammary Systems.
- Wide Rumps and Wide Rear Udders.
- Sexed Ultra 4 Mil semen RRP \$45

Pedigree: **Kingboy x Numero Uno**

RRP: \$45^{+GST}

PRODUCTION

ABV(g)	08/19	0 DTRS
MILK	566	% TEST
PROTEIN	+20	+0.09
FAT	+23	-0.02
GTPI 2524		

AUST. GENOMIC PROOF

WORKABILITY

MILKING SPEED	102
TEMPERAMENT	99
LIKEABILITY	103
Cell Count (g)	185



OVERALL TYPE	MAMMARY SYSTEM	USA		DTRS	GENOMIC		PROD LIFE	DPR
+2.57	+2.34			0			+3.8	+1.1
STATURE	ANGULARITY	BODY DEPTH	CHEST WIDTH	PIN WIDTH	PIN SET	FOOT ANGLE	LEGS REAR VIEW	
+1.74	+1.57	+0.98	+1.02	+2.20	-0.39	+1.78	+1.17	
UDDER DEPTH	FORE ATT.	REAR ATT. HGT	REAR ATT. WIDTH	CENT LIGAMENT	F. TEAT PLACEMENT	R. TEAT PLACEMENT	TEAT LENGTH	
+1.44	+2.32	+3.66	+3.37	+1.94	+1.28	+1.00	-0.05	

The MYLO logo is positioned within a blue semi-circular graphic at the top left of the page.

THE SENSATIONAL NEW CALF FEED ADDITAVE

MICROBIAL LIVESTOCK FEED SUPPLEMENT

✓ **Mylo[®]** for healthier, heavier and earlier weaned calves.

Mylo[®] is liquid live microbial livestock feed supplement to aid in the digestive health of livestock.

- Increase beneficial microbes in the gastrointestinal tract
- Higher feed conversion efficiency.
- Demonstrated 8.5% weight increase in University trials.
- Better growth, earlier weaning, earlier joining of heifers.
- Reduction in scours.
- Free of Antibiotics and hormones.
- No withholding period.



Contact your accredited NHD staff member for more information as well as countless farmer testimonials

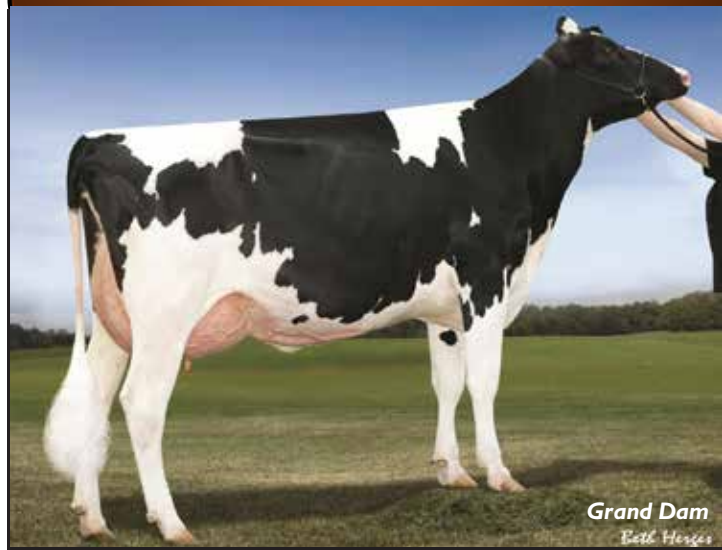


BUILDING BLOCKS FOR A BETTER HERD

CBCONTENDER

Mr Super Contender-ET

A2/A2
ST Genetics



✓ Strength ✓ Width ✓ Teat Length

BPI(g): 269 HWI(g): 240 TWI(g): 261

- Many Australian farmers love their Contender calves – real stand outs!
- Dramatic improver for Cell Count!
- Loads of Strength and Width throughout.

Pedigree: **Supershot x Numero Uno**

RRP: \$20^{+GST}

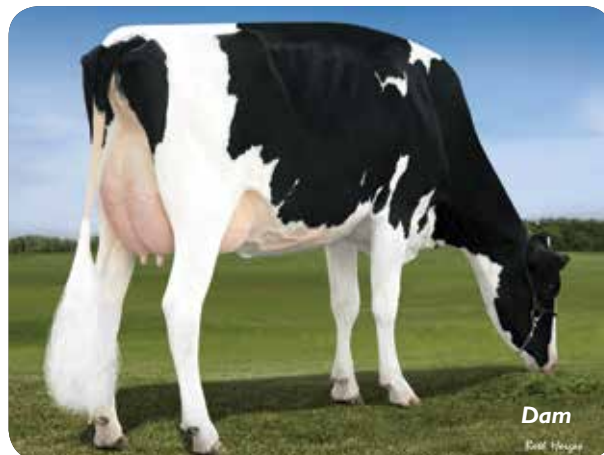
PRODUCTION

ABV(g)	08/19			0 DTRS
MILK	506	% TEST		
PROTEIN	+16	+0.05		
FAT	+14	-0.11	GTPI 2505	

AUST. GENOMIC PROOF

WORKABILITY

MILKING SPEED	100
TEMPERAMENT	104
LIKEABILITY	105
Cell Count (g)	192



OVERALL TYPE	MAMMARY SYSTEM	USA		DTRS	GENOMIC		PROD LIFE	DPR
+2.16	+1.62			0			+5.6	+1.1
STATURE	ANGULARITY	BODY DEPTH	CHEST WIDTH	PIN WIDTH	PIN SET	FOOT ANGLE	LEGS REAR VIEW	
+2.73	+0.81	+1.63	+2.22	+2.60	+0.96	+1.27	+0.45	
UDDER DEPTH	FORE ATT.	REAR ATT. HGT	REAR ATT. WIDTH	CENT LIGAMENT	F. TEAT PLACEMENT	R. TEAT PLACEMENT	TEAT LENGTH	
+2.28	+2.84	+2.39	+2.20	+0.83	+0.78	+0.25	+0.36	

STGLANDSLIDE

Vogue Landslide

ST Genetics

RRP: \$26^{+GST}



✓ Feet & Legs ✓ Overall Type ✓ Udders

BPI(g): 279 HWI(g): 241 TWI(g): 282

- A breed leader for Overall Type and Mammary Systems.
- Good milk flow coupled with positive components.
- Terrific Cell Count Improver. Calving Ease (6.3% USA - 71% Rel.)

Pedigree: **Contender x Alta 1stClass**

NHD Special: \$24^{+GST}

PRODUCTION

ABV(g)	08/19			0 DTRS
MILK	553	% TEST		
PROTEIN	+16	+0.03		
FAT	+26	+0.04	GTPI 2505	

AUST. GENOMIC PROOF

WORKABILITY

MILKING SPEED	102
TEMPERAMENT	104
LIKEABILITY	106
Cell Count (g)	179



OVERALL TYPE	MAMMARY SYSTEM	USA	DTRS	GENOMIC	PROD LIFE	DPR	
+2.83	+2.74		0		+4.0	-0.2	
STATURE	ANGULARITY	BODY DEPTH	CHEST WIDTH	PIN WIDTH	PIN SET	FOOT ANGLE	LEGS REAR VIEW
+3.03	+1.81	+1.67	+1.82	+1.84	-0.15	+1.91	+0.98
UDDER DEPTH	FORE ATT.	REAR ATT. HGT	REAR ATT. WIDTH	CENT LIGAMENT	F. TEAT PLACEMENT	R. TEAT PLACEMENT	TEAT LENGTH
+3.06	+3.69	+3.79	+3.49	+2.00	+1.96	+1.84	-0.42

BUILDING BLOCKS FOR A BETTER HERD

IT LETS GO

Vogue Letsgo

Genetics Australia

RRP: \$36^{+GST}



✓ Type ✓ Mammary ✓ Production

BPI(g): 363 HWI(g): 312 TWI(g): 365

- New elite sire for Overall Type and Mammary System.
- Extremely limited semen supply - Order early.
- Loads of capacity, outstanding Feet and Legs.

Pedigree: **Applicable x Powerball P** NHD Special: \$30^{+GST}

PRODUCTION

AUST. GENOMIC PROOF

ABV(g)	08/19	0 DTRS
MILK	465	% TEST
PROTEIN	+23	+0.20
FAT	+22	+0.03
		GTPI 2577

WORKABILITY

MILKING SPEED	103
TEMPERAMENT	102
LIKEABILITY	106
Cell Count (g)	154



OVERALL TYPE	MAMMARY SYSTEM	USA		DTRS	GENOMIC		PROD LIFE	DPR
+3.21	+3.09			0			+3.8	-0.8
STATURE	ANGULARITY	BODY DEPTH	CHEST WIDTH	PIN WIDTH	PIN SET	FOOT ANGLE	LEGS REAR VIEW	
+2.96	+1.70	+1.32	+1.44	+1.81	+1.13	+2.42	+1.73	
UDDER DEPTH	FORE ATT.	REAR ATT. HGT	REAR ATT. WIDTH	CENT LIGAMENT	F TEAT PLACEMENT	R TEAT PLACEMENT	TEAT LENGTH	
+3.44	+3.83	+4.25	+3.91	+1.94	+2.04	+1.48	-0.44	

CAMDEN - 7HO14096

Sandy-Valley FS Camden-ET

WWS

RRP: \$28^{+GST}



✓ Overall Type ✓ Production ✓ Udders

BPI(g): 304 HWI(g): 254 TWI(g): 295

- Great Overall Type and Production improver.
- Feet & Leg specialist – exceptional Foot Angle.
- One of the most balanced proofs in the entire catalogue !

Pedigree: **Flagship x Silver**

NHD Special: \$25^{+GST}

PRODUCTION

AUST. GENOMIC PROOF

ABV(g)	08/19	0 DTRS
MILK	531	% TEST
PROTEIN	+19	+0.09
FAT	+40	+0.25
		GTPI 2673

WORKABILITY

MILKING SPEED	101
TEMPERAMENT	102
LIKEABILITY	105
Cell Count (g)	168



OVERALL TYPE	MAMMARY SYSTEM	USA		DTRS	GENOMIC		PROD LIFE	DPR
+1.95	+2.45			0			+6.0	+0.4
STATURE	ANGULARITY	BODY DEPTH	CHEST WIDTH	PIN WIDTH	PIN SET	FOOT ANGLE	LEGS REAR VIEW	
+2.15	+1.03	+0.67	+0.84	+0.56	+0.87	+2.58	+0.67	
UDDER DEPTH	FORE ATT.	REAR ATT. HGT	REAR ATT. WIDTH	CENT LIGAMENT	F. TEAT PLACEMENT	R. TEAT PLACEMENT	TEAT LENGTH	
+2.03	+2.49	+3.79	+3.49	+1.72	+1.56	+1.92	+0.29	

NHD HIT PICKS

STGNITRO

Mr Spring Nitro-ET

ST Genetics



✓ Medium Size ✓ Production ✓ Super Udders

BPI(g): 306 HWI(g): 271 TWI(g): 305

- When it comes to Udder improvement, look no further than Nitro!
- Medium sized cows with highly desirable Rump structure.
- One of the best for Milk Yield improvement.
- Certain to be one of this year's most popular sires.

Pedigree: **Altaspring x Numero Uno**

RRP: \$20^{+GST}

PRODUCTION

AUST. GENOMIC PROOF

ABV(g)	08/19		0 DTRS
MILK	1019	% TEST	
PROTEIN	+26	-0.02	
FAT	+28	-0.22	GTPI 2535

WORKABILITY

MILKING SPEED	103
TEMPERAMENT	102
LIKEABILITY	105
Cell Count (g)	157



OVERALL TYPE	MAMMARY SYSTEM	USA		DTRS	GENOMIC		PROD LIFE	DPR
+2.08	+3.10			0			+6.0	+0.7
STATURE	ANGULARITY	BODY DEPTH	CHEST WIDTH	PIN WIDTH	PIN SET	FOOT ANGLE	LEGS REAR VIEW	
+0.85	+1.22	-0.10	+0.04	+1.32	+0.40	+1.10	+0.83	
UDDER DEPTH	FORE ATT.	REAR ATT. HGT	REAR ATT. WIDTH	CENT LIGAMENT	F. TEAT PLACEMENT	R. TEAT PLACEMENT	TEAT LENGTH	
+2.07	+2.92	+4.37	+4.02	+1.73	+1.12	+1.10	-0.16	

SAMARITAN - 29HO18691

Parkhurst Samaritan-ET

A2/A2

ABS

RRP: \$28^{+GST}



✓ Teat Length ✓ Udders ✓ Production

BPI(g): 269 HWI(g): 230 TWI(g): 272

- Sensational Udders with added Teat length.
- Great Overall Type improver with notable workabilities.
- From whatever angle you look at this bull's proof; it's outstanding.

Pedigree: **Modesty x Kingboy**

NHD Special: \$24^{+GST}

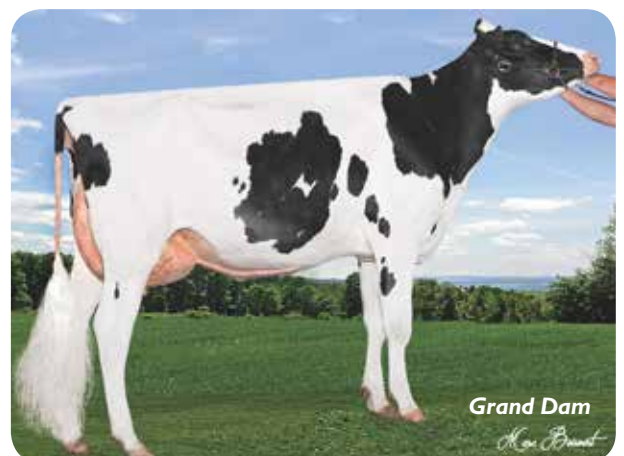
PRODUCTION

AUST. GENOMIC PROOF

ABV (g)	08/19		0 DTRS
MILK	242	% TEST	
PROTEIN	+13	+0.12	
FAT	+29	+0.27	GTPI 2605

WORKABILITY

MILKING SPEED	103
TEMPERAMENT	102
LIKEABILITY	105
Cell Count (g)	154



OVERALL TYPE	MAMMARY SYSTEM	USA	DTRS	GENOMIC	PROD LIFE	DPR	
+2.48	+2.31		0		+4.7	-0.2	
STATURE	ANGULARITY	BODY DEPTH	CHEST WIDTH	PIN WIDTH	PIN SET	FOOT ANGLE	REAR VIEW
+1.58	+2.03	+0.47	+0.23	+0.65	+0.22	+1.23	+0.98
UDDER DEPTH	FORE ATT.	REAR ATT. HGT	REAR ATT. WIDTH	CENT LIGAMENT	F. TEAT PLACEMENT	R. TEAT PLACEMENT	TEAT LENGTH
+1.89	+2.58	+3.19	+2.93	+1.98	+2.43	+2.12	+0.80

NHD HIT PICKS

JSSUPERHERO

Endco Superhero-ET

Genetics Australia/Jetstream

RRP: \$26^{+GST}



✓ Production ✓ Milk Yield ✓ Udders

BPI(i): 342 HWI(i): 299 TWI(i): 351

- Superhero – an apt name for a sire bound to have a large impact on the global genetic scene.
- Early milking daughters are living up to worldwide expectations.
- Super Survival and Daughter Fertility.

Pedigree: **Supershot x Numero Uno** NHD Special: \$24^{+GST}

PRODUCTION

ABV(i)	08/19		288 DTRS
MILK	632	% TEST	
PROTEIN	+22	+0.08	
FAT	+19	-0.20	GTPI 2535

INTERBULL PROOF

WORKABILITY

MILKING SPEED	101
TEMPERAMENT	104
LIKEABILITY	105
Cell Count (i)	175



Dam

OVERALL TYPE	MAMMARY SYSTEM	INTERBULL		DTRS	PROOF		SURVIVAL	DTR. FERT.
107	105			37			111	113
STATURE	ANGULARITY	BODY DEPTH	CHEST WIDTH	PIN WIDTH	PIN SET	FOOT ANGLE	LEGS REAR VIEW	
102	94	95	100	105	100	97	96	
UDDER DEPTH	FORE ATT.	REAR ATT. HGT	REAR ATT. WIDTH	CENT LIGAMENT	F. TEAT PLACEMENT	R. TEAT PLACEMENT	TEAT LENGTH	
109	106	108	97	103	101	98	94	

JSMONTANA

A2/A2

IHG Montana-ET

Genetics Australia/Jetstream

RRP: \$26^{+GST}



Calving Ease

✓ Teat Length ✓ Medium Size ✓ Dtr. Fertility

BPI(i): 339 HWI(i): 306 TWI(i): 338

- Finally, with greater access to semen, Montana can now contribute many great traits to your herd.
- Rapidly becoming an Australian favourite. Extreme ratings for Survival and Daughter Fertility.
- Calving Ease (6.5% USA – 98% Rel.).

Pedigree: **Montross x Numero Uno** NHD Special: \$22^{+GST}

PRODUCTION

ABV(i)	08/19		384 DTRS
MILK	+450	% TEST	
PROTEIN	+14	+0.03	
FAT	+40	+0.30	

INTERBULL PROOF

WORKABILITY

MILKING SPEED	104
TEMPERAMENT	101
LIKEABILITY	106
Cell Count (i)	171



Dam

OVERALL TYPE	MAMMARY SYSTEM	INTERBULL		DTRS	PROOF		SURVIVAL	DTR. FERT.
103	106			168			111	112
STATURE	ANGULARITY	BODY DEPTH	CHEST WIDTH	PIN WIDTH	PIN SET	FOOT ANGLE	LEGS REAR VIEW	
97	94	92	96	95	99	103	99	
UDDER DEPTH	FORE ATT.	REAR ATT. HGT	REAR ATT. WIDTH	CENT LIGAMENT	F. TEAT PLACEMENT	R. TEAT PLACEMENT	TEAT LENGTH	
108	108	108	97	103	102	101	99	



YOUR HERD, OUR COMMITMENT.

[WHATS YOUR BEEF?]

FROM HOUSE COW TO HUNDREDS

NHD can supply all the products, labour and expertise for a **Fixed Time AI Program** to suit your needs and budget.

NO JOB TOO BIG OR TOO SMALL

ANGUS, BAZADAISE, BEEF SHORTHORN, BELGIAN BLUE, BELTED GALLOWAY, BLONDE D'AQUITAINE, BRAHMAN, BRANGUS, CHAROLAIS, DROUGHTMASTER, GELBIEH,



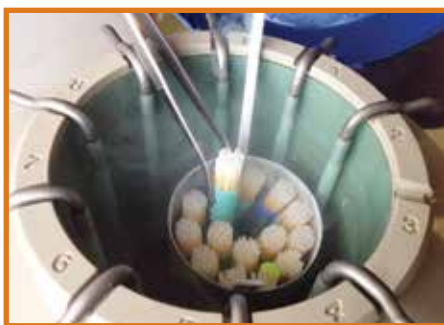
HEREFORD, HIGHLANDER, LONGHORN, LIMOUSIN, MAINE-ANJOU, MURRAY GREY, POLL HERFORD, POLL SHORTHORN, SANTA GERTRUDIS, SIMMENTAL, SPECKLE PARK, WAGYU



ALL BREEDS AVAILABLE



- Red River Stock Yards and Accessories.
- Top quality and affordable.
- Design advice, delivery and assembly.



- Regular on farm delivery of liquid nitrogen.
- Specialists in freeze branding services.
- Pregnancy test via blood samples from a minimum of 28 days from last mating.



COWS MADE FOR TODAY

METHOD

- 0200HOI1078

Progenesis Method

Semex

RRP: \$30^{+GST}



Calving Ease

✓ Dtr Fertility ✓ Production ✓ Teat Length

BPI(g): 308 HWI(g): 260 TWI(g): 257

- High Dtr Pregnancy Rate – enviable production – No Holes Type Proof.
- Calving Ease (4.9% USA – genomic).
- Yes, you can have it all!

Pedigree: **Granite x Penmanship** **NHD Special: \$24^{+GST}**

PRODUCTION

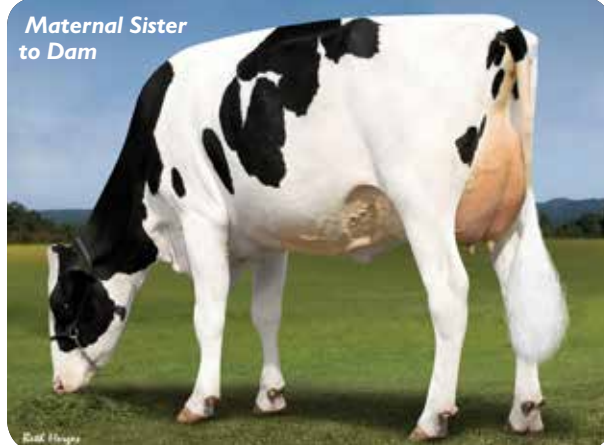
AUST. GENOMIC PROOF

ABV(g)	08/19	0 DTRS
MILK	558	% TEST
PROTEIN	+21	+0.12
FAT	+30	+0.08
		GTPI 2648

WORKABILITY

MILKING SPEED	101
TEMPERAMENT	104
LIKEABILITY	104
Cell Count (g)	160

Maternal Sister to Dam



OVERALL TYPE	MAMMARY SYSTEM	USA		DTRS	GENOMIC		PROD LIFE	DPR
+1.89	+1.64			0			+5.2	+2.3
STATURE	ANGULARITY	BODY DEPTH	CHEST WIDTH	PIN WIDTH	PIN SET	FOOT ANGLE	LEGS REAR VIEW	
+1.75	+0.76	+0.79	+1.01	+2.40	-0.22	+1.31	+1.32	
UDDER DEPTH	FORE ATT.	REAR ATT. HGT	REAR ATT. WIDTH	CENT LIGAMENT	F TEAT PLACEMENT	R. TEAT PLACEMENT	TEAT LENGTH	
+2.08	+2.18	+2.06	+1.90	+1.46	+1.10	+1.17	+0.22	

BUFFALO

- 0200HOI0765

A2/A2

View-Home Buffalo

Semex

RRP: \$25^{+GST}



Patty Jones

✓ Super Udders ✓ Feet & Legs ✓ Production

BPI(g): 277 HWI(g): 234 TWI(g): 297

- Buffalo by name but all round excellence is his game!
- Another exceptional value sire.

Pedigree: **Spring x McCutchen**

NHD Special: \$20^{+GST}

PRODUCTION

AUST. GENOMIC PROOF

ABV(g)	08/19	00 DTRS
MILK	+661	% TEST
PROTEIN	+20	+0.04
FAT	+32	+0.05
		GTPI 2591

WORKABILITY

MILKING SPEED	104
TEMPERAMENT	101
LIKEABILITY	105
Cell Count(g)	149



Grand Dam

OVERALL TYPE	MAMMARY SYSTEM	USA		DTRS	GENOMIC		PROD LIFE	DPR
+2.27	+2.49			00			+4.7	+1.3
STATURE	ANGULARITY	BODY DEPTH	CHEST WIDTH	PIN WIDTH	PIN SET	FOOT ANGLE	LEGS REAR VIEW	
+2.24	+1.26	+0.65	+0.59	+1.07	+1.11	+1.30	+1.47	
UDDER DEPTH	FORE ATT.	REAR ATT. HGT	REAR ATT. WIDTH	CENT LIGAMENT	F. TEAT PLACEMENT	R. TEAT PLACEMENT	TEAT LENGTH	
+3.16	+3.02	+3.11	+2.86	+1.81	+1.45	+1.38	+0.06	

OUTSTANDING ALL-ROUNDERS

MEGAWATT

A2/A2

Lindenright Megawatt - 0200HO10222 Semex

RRP: \$25⁺GST



Calving Ease

✓ Dtr. Proven ✓ Survival ✓ Dtr. Fertility

BPI(i): 263 HWI(i): 228 TWI(i): 246

- Highly regarded and reliable Daughter Proven sire.
- One of the best for Survival and Daughter Fertility.
- Calving Ease (6.5% USA - 85% Rel.)

Pedigree: **Enforcer x Bradnick** **NHD Special: \$20⁺GST**

PRODUCTION

ABV (i)	08/19	1956 DTRS
MILK	+413	% TEST
PROTEIN	+17	+0.11
FAT	+22	+0.07

INTERBULL PROOF

WORKABILITY

MILKING SPEED	102
TEMPERAMENT	102
LIKEABILITY	104
Cell Count (i)	138



Dam

OVERALL TYPE	MAMMARY SYSTEM	INTERBULL		DTRS	PROOF		SURVIVAL	DTR. FERT.
103	107			1487			109	110
STATURE	ANGULARITY	BODY DEPTH	CHEST WIDTH	PIN WIDTH	PIN SET	FOOT ANGLE	LEGS REAR VIEW	
106	97	94	94	94	96	106	100	
UDDER DEPTH	FORE ATT.	REAR ATT. HGT	REAR ATT. WIDTH	CENT LIGAMENT	F. TEAT PLACEMENT	R. TEAT PLACEMENT	TEAT LENGTH	
106	101	106	100	106	108	108	99	

GARZA

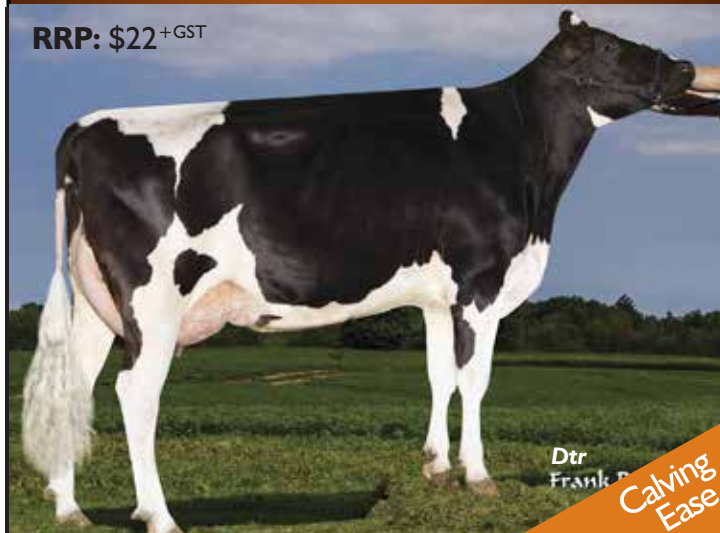
- 7HO12024

A2/A2

De-Su MGL Garza 11388-ET

WWS

RRP: \$22⁺GST



Dtr. Frank

Calving Ease

✓ Dtr. Proven ✓ Udders ✓ Survival

BPI(i): 255 HWI(i): 206 TWI(i): 292

- Another highly rated Daughter Proven sire by the acclaimed Mogul.
- Outstanding Udders – Medium size cows with Strength.
- One of the best for Daughter Survival.
- Calving Ease (6.5% USA - 98% Rel.)

Pedigree: **Mogul x Planet**

NHD Special: \$20⁺GST

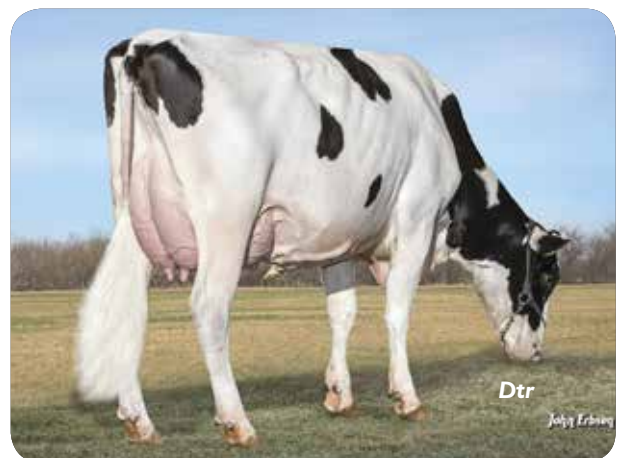
PRODUCTION

ABV (i)	08/19	183 DTRS
MILK	+513	% TEST
PROTEIN	+16	+0.05
FAT	+27	+0.07

INTERBULL PROOF

WORKABILITY

MILKING SPEED	103
TEMPERAMENT	102
LIKEABILITY	106
Cell Count (i)	144



Dtr

OVERALL TYPE	MAMMARY SYSTEM	INTERBULL		DTRS	PROOF		SURVIVAL	DTR. FERT.
108	110			121			112	107
STATURE	ANGULARITY	BODY DEPTH	CHEST WIDTH	PIN WIDTH	PIN SET	FOOT ANGLE	LEGS REAR VIEW	
103	100	100	101	104	102	100	106	
UDDER DEPTH	FORE ATT.	REAR ATT. HGT	REAR ATT. WIDTH	CENT LIGAMENT	F. TEAT PLACEMENT	R. TEAT PLACEMENT	TEAT LENGTH	
108	109	112	103	102	105	102	97	

ALL ROUND PERFORMANCE

SUREROZ

Siemers S-Hero Sure-Roz-ET

Agri-Gene

RRP: \$28^{+GST}



Pedigree: **Superhero x Delta**

NHD Special: \$24^{+GST}

PRODUCTION

AUST. GENOMIC PROOF

ABV(g)	08/19	0 DTRS
MILK	825	% TEST
PROTEIN	+23	+0.01
FAT	+27	-0.12

WORKABILITY

MILKING SPEED	102
TEMPERAMENT	103
LIKEABILITY	105
Cell Count (g)	160

☒ Medium Size ☒ High Milk ☒ Udders

BPI(g): 328 **HWI(g): 291** **TWI(g): 343**

• Medium sized cows with magnificent Udders.

• Elite Production and Workability traits.

OVERALL TYPE	MAMMARY SYSTEM	USA	DTRS	GENOMIC		PROD LIFE	DPR
+2.01	+2.43		0			+8.6	+1.2
STATURE	ANGULARITY	BODY DEPTH	CHEST WIDTH	PIN WIDTH	PIN SET	FOOT ANGLE	LEGS REAR VIEW
+0.88	+0.73	+0.27	+0.51	+1.18	+0.32	+0.89	+0.48
UDDER DEPTH	FORE ATT.	REAR ATT. HGT	REAR ATT. WIDTH	CENT LIGAMENT	F. TEAT PLACEMENT	R. TEAT PLACEMENT	TEAT LENGTH
+2.19	+2.94	+3.14	+2.89	+0.89	+0.73	+0.49	-0.18

WIGGINS - 7HO12724

A2/A2

T-Spruce Suprsht Wiggins-ET

WWS

RRP: \$24^{+GST}



VIKHSPARKY

A2/A2

VH Suarez Sparky

Viking Genetics



Pedigree: **Supershot x Galaxy**

NHD Special: \$22^{+GST}

PRODUCTION

INTERBULL PROOF

ABV(i)	08/19	108 DTRS
MILK	968	% TEST
PROTEIN	+32	+0.11
FAT	+19	-0.32
		GTPI 2549

WORKABILITY

MILKING SPEED	99
TEMPERAMENT	104
LIKEABILITY	105
Cell Count (i)	171

☒ Production ☒ Body Capacity ☒ Teat Length

BPI(i): 319 **HWI(i): 266** **TWI(i): 339**

• Teat length, super Udders with high Milk flow.

OVERALL TYPE	MAMMARY SYSTEM	USA		DTRS	GENOMIC		PROD LIFE	DPR
+2.18	+2.06			00			+4.8	+1.5
STATURE	ANGULARITY	BODY DEPTH	CHEST WIDTH	PIN WIDTH	PIN SET	FOOT ANGLE	LEGS REAR VIEW	
+2.23	+1.75	+1.22	+1.43	+1.46	+0.30	+1.01	+0.84	
UDDER DEPTH	FORE ATT.	REAR ATT. HGT	REAR ATT. WIDTH	CENT LIGAMENT	F. TEAT PLACEMENT	R. TEAT PLACEMENT	TEAT LENGTH	
+1.63	+2.81	+3.23	+2.97	+1.59	+1.32	+1.32	+1.12	

Pedigree: **VH Suarez x VH Salomon**

RRP: \$25^{+GST}

PRODUCTION

INTERBULL PROOF

ABV (i)	08/19	4009 DTRS
MILK	-75	% TEST
PROTEIN	+14	+0.30
FAT	+12	+0.21

WORKABILITY

MILKING SPEED	99
TEMPERAMENT	101
LIKEABILITY	100
Cell Count (i)	157

☒ Teat Length ☒ Outcross ☒ Daughter Fertility

BPI(i): 331 **HWI(i): 295** **TWI(i): 303**

• Highly rated Proven sire with a complete Outcross pedigree.

OVERALL TYPE	MAMMARY SYSTEM	INTERBULL		DTRS	CONVERSION		SURVIVAL	DTR. FERT.
102	103			1699			109	118
STATURE	ANGULARITY	BODY DEPTH	CHEST WIDTH	PIN WIDTH	PIN SET	FOOT ANGLE	LEGS REAR VIEW	
99	95	96	101	99	100	98	102	
UDDER DEPTH	FORE ATT.	REAR ATT. HGT	REAR ATT. WIDTH	CENT LIGAMENT	F. TEAT PLACEMENT	R. TEAT PLACEMENT	TEAT LENGTH	
107	104	103	96	99	108	102	106	

ANGUS Fertility Plus

Angus Fertility Plus is a premium beef product targeted specifically to commercial dairy and beef clients to maximise the profitability of any beef x dairy or commercial beef operation.

This specifically designed product incorporates three industry leading USA Angus sires from the ABS program, exhibiting an impressive combined calving ease direct EPD of +13 (top 7%) and lower birth weight EPD of -1.5 (top 7%), as well as shorter gestation and improved dairy x beef calf vigour. As the product name implies, we have boosted the fertility through incorporating three sires into one straw, with field experience suggesting a 5-9% increase on pregnancy rates!

As dairy herds across Australia aim to accelerate the rate of genetic gain in using higher ranking animals, **Angus Fertility Plus** allows lower ranking animals the opportunity to fall in calf earlier, and produce a superior quality crossbred calf, thus in turn driving profitability for farmers through their dairy x beef programme.

(Source, Bill Cornell ABS Australia Beef Product Manager)

RRP \$15.00

NHD Special: \$14^{+GST}

- Easy calving with growth
- Bulls have been selected from the best bulls in the grass fed type market that ABS has to offer
- When mating to Holsteins, the ability to grow, mature and lay down fat is paramount, with Rib Eye Area (EMA) that places these bulls in the top 7% of the Angus breed
- Fertility Plus is designed to produce higher than normal pregnancy rates
- Calves should grow strongly to yearlings and into medium mature size cows



Top: FRODOB Spring Cows, CROSBY
Middle: FRODOB Spring Cows, CROSBY
Right: FRODOB Spring Cows, CROSBY
Working together to get cows pregnant

[For all your **artificial breeding** and associated
merchandise contact **NHD**]



YOUR HERD, OUR COMMITMENT.

[PREGNANCY TESTING WITH MILK SAMPLES]

Utilizing the IDEXX Milk Pregnancy Test. Confirming pregnancy through milk samples - easy, accurate, cost effective.

The Value of Pregnancy Confirmation using Milk Samples

- Use this unobtrusive diagnosis to confirm pregnancy as early as 28 days post-breeding
- Avoid additional animal handling and labour by adding the pregnancy testing option to your scheduled herd test

Using Herd Test samples, the farmer is only required to indicate which samples need to be tested by highlighting the cow number on the paperwork provided.

The testing will then be completed at the National Herd Development centre by fully trained Staff.



Farmer Requirements:

- Cow must be 60 days post calving
- Cow must be 28 days post joining
- Notify NHD several days prior of the need for Pregnancy Testing



28 Day Blood Pregnancy Testing

For this test the farmer must supply a blood sample from the cow to be tested or NHD staff can take the blood sample for you.

Blood testing is ideal for Beef Cattle and Dairy Heifers prior to first lactation.



TALK OF THE TOWN

ASKN

A2/A2

Brookbora Valentino Askn

Genetics Australia

RRP: \$22⁺GST



✓ Stature ✓ Udders ✓ Survival

BPI(g): 189 HWI(g): 146 TWI(g): 252

- Early milking daughters have certainly made ASKN 'The talk of the Town'.
- Extreme demand anticipated.
- Overall Type – Mammary System – Survival.

Pedigree: Valentino x Tbone

NHD Special: \$20⁺GST

PRODUCTION

AUST. GENOMIC PROOF

ABV(g)	08/19	00 DTRS
MILK	22	% TEST
PROTEIN	+15	+0.30
FAT	+9	+0.14

WORKABILITY

MILKING SPEED	100
TEMPERAMENT	104
LIKEABILITY	106
Cell Count (g)	119



OVERALL TYPE	MAMMARY SYSTEM	AUSTRALIAN		DTRS	GENOMIC		SURVIVAL	DTR. FERT.
111	114			00			113	98
STATURE	ANGULARITY	BODY DEPTH	CHEST WIDTH	PIN WIDTH	PIN SET	FOOT ANGLE	LEGS REAR VIEW	
106	106	101	100	108	105	106	102	
UDDER DEPTH	FORE ATT.	REAR ATT. HGT	REAR ATT. WIDTH	CENT LIGAMENT	F. TEAT PLACEMENT	R. TEAT PLACEMENT	TEAT LENGTH	
104	107	105	110	110	110	111	93	

MEGAPOWER

A2/A2

River Valley PF Megapower

7JE05011

WWS



✓ Production ✓ Stature ✓ Survival ✓ Teat Length

BPI(i): 173 HWI(i): 104 TWI(i): 220

- Highly reliable Proven sire with much to offer the Jersey Breed today.
- Stature, Teat Length and so much more.

Pedigree: Megatron x Tbone

RRP: \$18⁺GST

PRODUCTION

INTERBULL PROOF

ABV(i)	08/19	964 DTRS
MILK	+418	% TEST
PROTEIN	+17	+0.06
FAT	+42	+0.37

WORKABILITY

MILKING SPEED	103
TEMPERAMENT	103
LIKEABILITY	103
Cell Count (i)	93



OVERALL TYPE	MAMMARY SYSTEM	INTERBULL		DTRS	PROOF		SURVIVAL	DTR. FERT.
108	107			506			107	98
STATURE	ANGULARITY	BODY DEPTH	CHEST WIDTH	PIN WIDTH	PIN SET	FOOT ANGLE	LEGS REAR VIEW	
110	107	101	104	102	103	102	95	
UDDER DEPTH	FORE ATT.	REAR ATT. HGT	REAR ATT. WIDTH	CENT LIGAMENT	F. TEAT PLACEMENT	R. TEAT PLACEMENT	TEAT LENGTH	
104	107	105	102	106	102	102	109	

ELITE FOR TODAY AND TOMORROW

CSCDYNAMITE

Gelbeado Park Dynamite

ABS

RRP: \$22⁺GST



Family Member
Stu Muckie

Pedigree: **Dazzler x Raceway**

NHD Special: \$18⁺GST

PRODUCTION

AUST. GENOMIC PROOF

ABV(g)	08/19	00 DTRS
MILK	-365	% TEST
PROTEIN	+12	+0.54
FAT	+27	+0.88

WORKABILITY

MILKING SPEED	102
TEMPERAMENT	101
LIKEABILITY	102
Cell Count (g)	139

✓ Components ✓ Dtr. Fertility ✓ Feet and Legs

BPI(g): 264 HWI(g): 204 TWI(g): 264

• Australia's No. 1 Genomic sire with positive Type. Positive Daughter Fertility.

OVERALL TYPE	MAMMARY SYSTEM	AUSTRALIAN	DTRS	GENOMIC	SURVIVAL	DTR. FERT.
103	103		00		108	103
STATURE	ANGULARITY	BODY DEPTH	CHEST WIDTH	PIN WIDTH	PIN SET	FOOT ANGLE
99	100	101	100	100	102	103
UDDER DEPTH	FORE ATT.	REAR ATT. HGT	REAR ATT. WIDTH	CENT. LIGAMENT	F. TEAT PLACEMENT	R. TEAT PLACEMENT
105	102	102	96	104	106	106
LEGS REAR VIEW	TEAT LENGTH					
105	98					

DOBSON

White Star Doorman

Genetics Australia



Pedigree: **David x Elton**

RRP: \$20⁺GST

PRODUCTION

AUST. GENOMIC PROOF

ABV(g)	08/19	00 DTRS
MILK	254	% TEST
PROTEIN	+24	+0.32
FAT	+30	+0.31

WORKABILITY

MILKING SPEED	102
TEMPERAMENT	103
LIKEABILITY	105
Cell Count (g)	115

✓ Components ✓ Survival ✓ Rump Structure

BPI(g): 252 HWI(g): 186 TWI(g): 256

• No. 5 Australian Genomic Jersey. High Daughter Survival.

OVERALL TYPE	MAMMARY SYSTEM	AUSTRALIAN	DTRS	GENOMIC	SURVIVAL	DTR. FERT.
103	103		00		110	100
STATURE	ANGULARITY	BODY DEPTH	CHEST WIDTH	PIN WIDTH	PIN SET	FOOT ANGLE
101	102	98	102	100	107	101
UDDER DEPTH	FORE ATT.	REAR ATT. HGT	REAR ATT. WIDTH	CENT. LIGAMENT	F. TEAT PLACEMENT	R. TEAT PLACEMENT
102	103	101	102	102	103	104
LEGS REAR VIEW	TEAT LENGTH					
102	98					

MATT - 7JE01344

Wilsonview IF Matt-ET

A2/A2

WWS

RRP: \$20⁺GST



Dtr
Patty Jones

Pedigree: **Irwin x Tbone**

NHD Special: \$16⁺GST

PRODUCTION

AUSTRALIAN PROOF

ABV	08/19	3198 DTRS
MILK	+228	% TEST
PROTEIN	+15	+0.15
FAT	+19	+0.12

WORKABILITY

MILKING SPEED	104
TEMPERAMENT	103
LIKEABILITY	102
Cell Count	158

✓ Type & Udders ✓ Survival ✓ Dtr. Proven

BPI: 265 HWI: 228 TWI: 328

• No. 1 Australian Proven sire - outstanding all round cows.

OVERALL TYPE	MAMMARY SYSTEM	AUSTRALIAN	DTRS	PROOF	SURVIVAL	DTR. FERT.
111	110		883		110	102
STATURE	ANGULARITY	BODY DEPTH	CHEST WIDTH	PIN WIDTH	PIN SET	FOOT ANGLE
104	106	99	99	101	100	104
UDDER DEPTH	FORE ATT.	REAR ATT. HGT	REAR ATT. WIDTH	CENT. LIGAMENT	F. TEAT PLACEMENT	R. TEAT PLACEMENT
107	110	105	101	106	111	105
LEGS REAR VIEW	TEAT LENGTH					
98	98					

SENSATIONAL NEW SIRES

JETFIGHTER

Cairnbrae Top Gun

Agri-Gene

RRP: \$20⁺GST



Dam

Pedigree: Cairnbone x Valentino **NHD Special: \$18⁺GST**

PRODUCTION

AUST. GENOMIC PROOF

ABV(g)	08/19	00 DTRS
MILK	279	% TEST
PROTEIN	+16	+0.15
FAT	+30	+0.28

WORKABILITY

MILKING SPEED	100
TEMPERAMENT	102
LIKEABILITY	104
Cell Count (g)	129

✓ Positive Milk ✓ Components ✓ Conformation

BPI(g): 203 HWI(g): 153 TWI(g): 256

• Tremendous Type and Mammary improver, great cow family.

OVERALL TYPE	MAMMARY SYSTEM	AUSTRALIAN	DTRS	GENOMIC	SURVIVAL	DTR. FERT.	
110	112		00		108	98	
STATURE	ANGULARITY	BODY DEPTH	CHEST WIDTH	PIN WIDTH	PIN SET	FOOT ANGLE	LEGS REAR VIEW
102	107	105	102	103	101	101	103
UDDER DEPTH	FORE ATT.	REAR ATT. HGT	REAR ATT. WIDTH	CENT LIGAMENT	F TEAT PLACEMENT	R. TEAT PLACEMENT	TEAT LENGTH
100	106	107	109	106	106	106	100

KAZAMM - 29JE4207

Cairnbrae Kazamm (A2/A2 Result pending) ABS



Grand Dam

Pedigree: Chrome x Cairnbone

RRP: \$16⁺GST

PRODUCTION

AUST. GENOMIC PROOF

ABV(g)	08/19	00 DTRS
MILK	211	% TEST
PROTEIN	+11	+0.08
FAT	+19	+0.14

WORKABILITY

MILKING SPEED	101
TEMPERAMENT	101
LIKEABILITY	103
Cell Count (g)	139

✓ Survival ✓ Overall Type ✓ Udders

BPI(g): 192 HWI(g): 162 TWI(g): 242

• Early Australian Chrome son with higher Components. Extraordinary Udders.

OVERALL TYPE	MAMMARY SYSTEM	AUSTRALIAN		DTRS	GENOMIC		SURVIVAL	DRT. FERT.
109	113			00			108	101
STATURE	ANGULARITY	BODY DEPTH	CHEST WIDTH	PIN WIDTH	PIN SET	FOOT ANGLE	LEGS REAR VIEW	
106	110	100	96	103	100	104	100	
UDDER DEPTH	FORE ATT.	REAR ATT. HGT	REAR ATT. WIDTH	CENT LIGAMENT	F. TEAT PLACEMENT	R. TEAT PLACEMENT	TEAT LENGTH	
105	107	108	107	109	109	109	100	

CSCJAMIEO

Murray Brook Jamieo

A2/A2

ABS

RRP: \$22⁺GST



Oliver-P Dtr

Pedigree: Oliver-P x CSCJED

NHD Special: \$18⁺GST

PRODUCTION

AUST. GENOMIC PROOF

ABV(g)	08/19	00 DTRS
MILK	-91	% TEST
PROTEIN	+8	+0.24
FAT	+32	+0.70

WORKABILITY

MILKING SPEED	101
TEMPERAMENT	104
LIKEABILITY	105
Cell Count (g)	128

✓ Type & Udders ✓ Survival ✓ Outcross

BPI(g): 231 HWI(g): 193 TWI(g): 279

• A sire with a relatively outcross pedigree. Great Udders and Overall Type.

OVERALL TYPE	MAMMARY SYSTEM	AUSTRALIAN		DTRS	GENOMIC		SURVIVAL	DTR. FERT.
110	113			00			108	100
STATURE	ANGULARITY	BODY DEPTH	CHEST WIDTH	PIN WIDTH	PIN SET	FOOT ANGLE	LEGS REAR VIEW	
104	106	94	99	105	106	101	104	
UDDER DEPTH	FORE ATT.	REAR ATT. HGT	REAR ATT. WIDTH	CENT LIGAMENT	F TEAT PLACEMENT	R. TEAT PLACEMENT	TEAT LENGTH	
107	105	108	110	107	110	105	94	

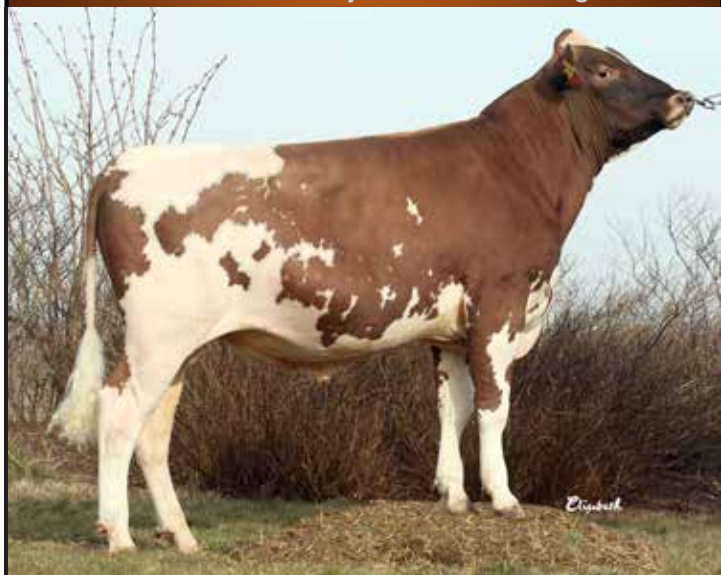
TOP OF THE TREE REDS

VIKRTOKYO

A2/A2

VR Malback Tuomi Tokyo

Viking Genetics



Pedigree: VR Tuomi x V Foske

RRP: \$28⁺GST

PRODUCTION

AUSTRALIAN PROOF

ABV	08/19	2,403 DTRS
MILK	+913	% TEST
PROTEIN	+38	+0.25
FAT	+39	+0.01

WORKABILITY

MILKING SPEED	99
TEMPERAMENT	100
LIKEABILITY	105
Cell Count	142

✓ Shallow Udders ✓ Strength ✓ Survival

BPI: 300 HWI: 194 TWI: 297

• No. 1 BPI Red Breeds Sire – Australian Daughter Proven.

OVERALL TYPE	MAMMARY SYSTEM	INTERBULL	DTRS	CONVERSION	SURVIVAL	DRT. FERT.
106	105		1,110		108	100
STATURE	ANGULARITY	BODY DEPTH	CHEST WIDTH	PIN WIDTH	PIN SET	FOOT ANGLE
109	104	108	108	104	109	102
UDDER DEPTH	FORE ATT.	REAR ATT. HGT	REAR ATT. WIDTH	CENT LIGAMENT	F. TEAT PLACEMENT	R. TEAT PLACEMENT
106	98	104	105	105	104	99

ENGER - 252NRI1147

ABS



Pedigree: Braut 10177 x Olstad

RRP: \$18⁺GST

PRODUCTION

INTERBULL PROOF

ABV(i)	08/19	2,300 DTRS
MILK	359	% TEST
PROTEIN	+23	+0.24
FAT	+21	+0.09

WORKABILITY

MILKING SPEED	100
TEMPERAMENT	99
LIKEABILITY	100
Cell Count (i)	133

✓ Daughter Fertility ✓ Teat Length ✓ Production

BPI(i): 246 HWI(i): 183 TWI(i): 215

• Norwegian Red sire that ranks as No. 3 Daughter Proven sire.

OVERALL TYPE	MAMMARY SYSTEM	INTERBULL	DTRS	CONVERSION	SURVIVAL	DRT. FERT.
99	98		407		101	109
STATURE	ANGULARITY	BODY DEPTH	CHEST WIDTH	PIN WIDTH	PIN SET	FOOT ANGLE
101	99	101	106	112	110	96
UDDER DEPTH	FORE ATT.	REAR ATT. HGT	REAR ATT. WIDTH	CENT LIGAMENT	F. TEAT PLACEMENT	R. TEAT PLACEMENT
96	102	96	N/A	103	96	99

SKJELVAN - SKJELVAN1039

ABS



Pedigree: Ponnistus x Orraryd 1433

RRP: \$18⁺GST

PRODUCTION

AUSTRALIAN PROOF

ABV	08/19	12,113 DTRS
MILK	1136	% TEST
PROTEIN	+39	+0.15
FAT	+34	-0.21

WORKABILITY

MILKING SPEED	101
TEMPERAMENT	102
LIKEABILITY	101
Cell Count	118

✓ Massive Production ✓ Survival ✓ Shallow Udders

BPI: 266 HWI: 184 TWI: 259

• Norwegian Red sire that is No. 2 BPI Australian Proven sire.

OVERALL TYPE	MAMMARY SYSTEM	INTERBULL	DTRS	PROOF	SURVIVAL	DRT. FERT.
103	96		1,097		105	104
STATURE	ANGULARITY	BODY DEPTH	CHEST WIDTH	PIN WIDTH	PIN SET	FOOT ANGLE
103	101	100	105	103	100	106
UDDER DEPTH	FORE ATT.	REAR ATT. HGT	REAR ATT. WIDTH	CENT LIGAMENT	F. TEAT PLACEMENT	R. TEAT PLACEMENT
106	104	97	102	89	93	104

AUSSIE RED

ARBCYGNET

Beaulands Swannies-ET

Genetics Australia



Pedigree: VFoske x Olstad

RRP: \$22 + GST

PRODUCTION

AUSTRALIAN PROOF

ABV	08/19	82 DTRS
MILK	+778	% TEST
PROTEIN	+24	+0.05
FAT	+25	-0.12

WORKABILITY

MILKING SPEED	104
TEMPERAMENT	103
LIKEABILITY	106
Cell Count	115

☒ Production ☒ Correct Rumps ☒ Front Teat Placement

BPI: 218 HWI: 182 TWI: 203

• No. 4 BPI Red Breed Sire – Australian Daughter Proven.

OVERALL TYPE	MAMMARY SYSTEM	AUSTRALIAN		DTRS	PROOF		SURVIVAL	DRT. FERT.
101	106			24			105	102
STATURE	ANGULARITY	BODY DEPTH	CHEST WIDTH	PIN WIDTH	PIN SET	FOOT ANGLE	LEGS REAR VIEW	
97	97	104	98	105	108	104	97	
UDDER DEPTH	FORE ATT.	REAR ATT. HGT	REAR ATT. WIDTH	CENT LIGAMENT	F. TEAT PLACEMENT	R. TEAT PLACEMENT	TEAT LENGTH	
96	99	102	104	105	113	104	90	

ALL OTHER BREEDS AVAILABLE

AYRSHIRE



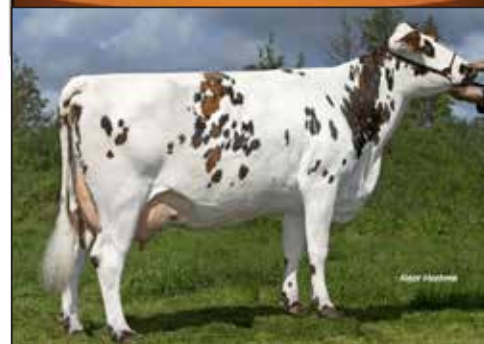
BROWN SWISS



GUERNSEY



NORMANDE



MONTBELIARDE



KIWI FRIESIAN



NORTHERN VICTORIA

NHD Cohuna

44 Western Road, Cohuna Vic 3568
Phone: 03 5456 2366
Email: info@nationalherd.com.au

NHD Marketing Manager:

Christian Hickey 0428 511 628
Email: christian.hickey@nationalherd.com.au

SALES

Christian Hickey 0428 511 628
Adam Dee 0427 530 011
Stewart Mancer 0429 882 201

NHD Wangaratta

9 Browning Street, Wangaratta Vic 3676
Phone: 03 5722 4422
Email: wangaratta@nationalherd.com.au

SALES

Stewart Mancer 0429 882 201

NHD Kyabram

62 McEwen Road, Kyabram Vic 3619
Phone: 03 5852 2455
Email: herdrecord@nationalherd.com.au
Toll Free: 1300 650 853

WESTERN VICTORIA

NHD Terang

41-43 High Street, Terang Vic 3264
Phone: 03 5592 1177
Email: terang@nationalherd.com.au

NHD Site Manager:

Colin Murray 0448 422 376
Email: colin.murray@nationalherd.com.au

SALES

Colin Murray 0448 422 376
Dylan Jewell 0408 528 823
Gary Richardson 0428 515 288
Brendan Billington 0407 843 909
Neil Holcombe 0408 595 765
Phil McLauchlan 0438 355 132

NHD Mount Gambier

4 Pyne Close, Mount Gambier SA 5290
Phone: 0418 808 682
Email: mtgambier@nationalherd.com.au

NHD Site Manager:

Dale Howard 0429 205 087
Email: dale.howard@nationalherd.com.au

SALES

Dale Howard 0429 205 087
Chris Morris 0427 887 951
Luke Lovekin 0427 079 114

SOUTH AUSTRALIA

NHD Murray Bridge

98 Eleanor Terrace, Murray Bridge SA 5253
Phone: 08 8532 1392
Email: murraybridge@nationalherd.com.au

NHD South Australia Manager:

Kent Llewellyn 0417 821 179
Email: kent.llewellyn@nationalherd.com.au

SALES

Kent Llewellyn 0417 821 179
David Peglar 0409 547 212
Stuart Graetz 0427 477 717

Agents for **Red River** cattle yards and crushes.

NHD Yankalilla

Lot 2 Mary Street, Yankalilla SA 5203
Phone: 0418 843 419
Email: yankalilla@nationalherd.com.au



NHD SERVICES

- **Independent semen sales and breeding advice**
All breeds - All companies - Beef and Dairy
- **Artificial Insemination service**
*NHIA accredited technicians
Daily service
Timed AI programs, synchronization programs*
- **Artificial breeding merchandise**
AI tanks, tail paint, heat detectors, gloves etc.
- **Independent corrective herd mating program**
Individual cow assessment and sire recommendations
- **Computer generated mating program**
Streamline your breeding program / avoid inbreeding
- **Stock services**
Calf dehorning / freeze branding / All Shooft cattle products
- **Herd testing & recording**
*Many options including EID
Mastitis variety identification*
- **Pregnancy testing**
*Conducted via milk samples or blood samples
Ultrasound scanning*
- **MISTRO computer program**
*Australia's most popular and complete
dairy farm recording program*
- **Dairy chemicals & detergents**
Australia's largest rural EcoLab distributor
- **Liquid nitrogen**
Reliable and regular on-farm delivery service

Limitation of liability: National Herd Development and its employees, cannot guarantee the conception rate or production to be obtained in connection with the use or recommended techniques of the products portrayed within this catalogue. Any person relying upon any information set out herein does so entirely at their own risk and no claims will be entered into notwithstanding any negligence or omission on the part of National Herd Development. National Herd Development is the trading name of Northern Herd Development Co-Operative.