

The Source

AUGUST 2019



WORLD WIDE SIRES AUSTRALIA



WWS

BY DESIGN...NOT CHANCE

**Experience
the Difference.**

WORLD WIDE SIRES

PO Box 7538 • Shepparton • 3632 Victoria
Phone (03) 5831 5559 • Fax (03) 5822 0005
info@wwsaustralia.com • www.wwsires.com



WWS AUSTRALIA STAFF AND DEFINITION OF TERMS

NAME	AREA	EMAIL	PHONE
WWS MANAGEMENT & OFFICE			
Geoff Wood	General Manager	gwood@wwsaustralia.com	0427 391 355
Tim Weller	Marketing Manager	tweller@wwsaustralia.com	0427 465 490
Administration & Despatch		info@wwsaustralia.com	03 5831 5559
WWS SALES TEAM			
Brett Morgan	Northern Victoria	bmorgan@wwsaustralia.com	0400 583 086
Brian Beard	Western Victoria & South East South Australia	bbeard@wwsaustralia.com	0427 534 203
Darren Pollock	Gippsland, Northern Victoria	dpollock@wwsaustralia.com	0427 638 176
John Conheady	Western Victoria	jconheady@wwsaustralia.com	0427 812 321
Mark Patullo	Queensland, Western Australia, Northern & North East Victoria, South Coast NSW	mpatullo@wwsaustralia.com	0427 497 555
Poss Warnett	Northern NSW, Tasmania, South Australia, Northern Victoria	nwarnett@wwsaustralia.com	0427 489 539
Rick Minichiello	Gippsland	rminichiello@wwsaustralia.com	0499 111 630
Tim Weller	Southern NSW, Northern Victoria	tweller@wwsaustralia.com	0427 465 490
Tony Jackson	Western Victoria, South East South Australia & Tasmania	tjackson@wwsaustralia.com	0427 501 950
WMS BREEDING CONSULTANTS			
Amy Wright	WMS Breeding Consultant	awright@wwsaustralia.com	0408 417 871
David James	WMS Breeding Consultant	djames@wwsaustralia.com	0427 466 637
GLOBAL DAIRY SOLUTIONS & COW MANAGER			
Chris Kendall	Global Dairy Solutions Manager	ckendall@wwsaustralia.com	0427 487 743
Brett Morgan	Reproduction Consultant & Cow Manager - Northern Vic	bmorgan@wwsaustralia.com	0400 583 086



394 BPI

GBG Bulls that appear with the GBG logo, and that bulls current BPI, meet strict reliability levels and are considered by DataGene to be amongst the best in the breed. These bulls will also appear in searches on the GBG App.



FERTILITY + Sires that have a Sire Conception Rate of +1.0 or more. These sires can be used to improve conception rates on hard to breed cows.



CALVING EASE Sires with +7.0% or less have been identified. Sires that can be used with confidence for easier calvings, the lower the calving ease score the easier the expected calvings.



HEALTHMAXX Identifies bulls that improve all the key Health Traits, they are greater than +4.0 Productive Life, more than +1.0 Fertility Index and less than +3.00 Somatic Cell Score.



COMPONENTMAXX For dairy farmers wanting to focus on improving Fat and Protein test. Bulls identified are more than +0.05% for both Fat & Protein test.



SEXED Identifies bulls available in female sorted semen.



G-FORCE Sires identified as the world's elite young sires after considering cow family and pedigree, and the genomic proof information.

- PL** Productive life is a score used to identify the productive days of life a cow will have compared to herd mates. A PL of 1.0 equates to one additional month of production in the herd.
- SCS** Somatic cell score: Measures a bull's milking daughter's susceptibility to mastitis. The average is 3.00 with lower proof values indicating greater resistance to mastitis incidence.
- FI** Fertility Index: Female fertility plays a key role in the profitability of a dairy. The new Fertility Index (FI) combines values from three measures of reproductive performance to provide one overall fertility score.
- Fertility Index** = 18% HCR + 18% CCR + 64% DPR
- HCR** = PTA HCR (Heifer Conception Rate) – measures the ability of virgin heifers to conceive
- CCR** = PTA CCR (Cow Conception Rate) – measures the ability of lactating cows to conceive
- DPR** = PTA DPR (Daughter Pregnancy Rate) – measures the cow's ability to begin cycling, show estrus, conceive and maintain pregnancy. A DPR of +1.0 means 4 less days open.
- SCR** Sire Conception Rate – measures the fertility of the bull. An SCR of +1.0 indicates a 1% increase in conception rate when compared to the average sire.
- SCE** Sire Calving Ease: This is the estimate of the Percentage of Difficult Births in Heifers when they calve the first time. The average for all bulls with progeny is 7.9%.

Limitations and Conditions of Sale: gender SELECTed semen shall be used only for the single insemination of one female bovine during natural ovulation with the intent to produce single offspring unless specifically approved on an individual customer basis by Sexing Technologies in writing. As a condition of purchasing gender SELECTed semen, the purchaser agrees that gender SELECTed semen will not be reverse sorted or re-sorted unless specifically permitted, in advance, on a case-by-case basis by Select Sires in writing. Select Sires intends to monitor the use of the gender SELECTed semen and vigorously enforce these restrictions on use. Please see <http://www.selectsires.com/designations/gendersselected.html> for additional details.

INDEX OF SIRES

PAGE	BULL ID	BULL NAME	PRICE	SEXED	A2A2	NM\$	TPI
8	614HO14226	ROME-XY	NA	\$200	A2A2	1040	2816
9	614HO14085	SOLUTION-XY	NA	\$180	A2A2	1020	2831
7	14HO07770	HELIX	\$65	\$140		978	2811
6	7HO14319	FORTE	\$50	\$130		970	2833
6	7HO12788	FRAZZLED	\$55	\$70	A2A2	970	2731
8	614HO14220	RIVETING-XY	NA	\$200	A2A2	968	2860
7	7HO14125	HUEY	\$50	\$100	A2A2	964	2800
5	14HO07923	DOCTOR	\$50	\$130		949	2839
6	7HO14333	FUTURE	\$40		A2A2	941	2717
5	250HO13267	DUKE	\$45			935	2758
5	14HO14449	AZTEC	\$40		A2A2	933	2728
8	14HO14448	MOTION	\$40		A2A2	918	2700
5	14HO14129	BASIC	\$50	\$70	A2A2	902	2769
8	7HO14615	MONTLEY	\$50		A2A2	900	2802
7	14HO14321	HONOR	\$36	\$70	A2A2	890	2657
9	14HO14193	WHINO	\$36	\$75	A2A2	888	2672
9	7HO14439	TRILOGY	\$50		A2A2	888	2751
10	250HO14465	RONALD*RC	\$40			878	2770
7	14HO14225	JUDGE	\$34	\$70	A2A2	853	2606
6	7HO14455	FREEDOM	\$36	\$75	A2A2	848	2613
9	7HO12837	ZAMBONI	\$38		A2A2	813	2689

PAGE	BULL ID	BULL NAME	PRICE	SEXED	A2A2	PTAT	UDC
10	7HO14460	CROWN-RED	\$50			2.71	2.55
10	7HO12344	RAGER-RED	\$34	\$90	A2A2	2.34	1.41
10	14HO14464	REEVE-RED	\$50	\$100		2.39	2.38
11	7HO14477	WARRIOR-RED	\$50	\$115		4.20	3.03
14	7HO13730	UNDENIED	\$36	\$85	A2A2	4.16	2.03
12	250HO14579	HANCOCK	\$40		A2A2	4.06	3.50
12	250HO12589	JACOBY	\$26	\$75	A2A2	3.94	3.55
12	250HO12961	DOC	\$34	\$80		3.93	2.83
14	7HO13839	TATOO	\$34	\$80		3.69	3.39
14	250HO14503	SUBBAN	\$34			3.59	3.09
14	250HO14140	SEABISCUIT	\$28	\$80	A2A2	3.24	2.39
12	7HO12587	DIAMONDBACK*RC	\$28	\$70		3.23	2.99
11	7HO12353	BEEMER	\$26	\$80		3.22	2.27
13	7HO12787	KING ROYAL	\$40	\$100	A2A2	3.14	2.95
13	7HO12198	KINGBOY	\$45	\$80	A2A2	2.94	2.46
11	7HO12042	CORVETTE	\$18		A2A2	2.86	1.95
11	250HO12805	CALLEN	\$22	\$60		2.79	2.91
13	7HO12228	KINGPIN	\$24	\$65		2.75	2.01
13	250HO12879	LIGHT MY FIRE	\$18			2.73	3.11

All genderSELECTed and ACCESS semen is processed using SexedULTRA technology. Sexed ULTRA™ and SexedULTRA 4M™ are trademarks of Inguran LLC. genderSELECTed® and ACCESS® are registered trademarks of Select Sires Inc. Limitations and Conditions of Sale: genderSELECTed and ACCESS semen shall be used only for the single insemination of one female bovine during natural ovulation with the intent to produce single offspring unless specifically approved on an individual customer basis by Sexing Technologies in writing. As a condition of purchasing genderSELECTed or ACCESS semen, the purchaser agrees that genderSELECTed and ACCESS semen will not be reverse sorted or re-sorted unless specifically permitted, in advance, on a case-by-case basis by Select Sires in writing. Select Sires intends to monitor the use of the genderSELECTed and ACCESS semen and vigorously enforce these restrictions on use. Please see <http://www.selectsires.com/designations/genderselected.html> for additional details.

WORLD WIDE SIRES

PO Box 7538 • Shepparton • 3632 Victoria
 Phone (03) 5831 5559 • Fax (03) 5822 0005
info@wwsaustralia.com • www.wwsires.com



ARE YOU STRUGGLING TO DEFINE A GENETIC STRATEGY?

DO YOU HAVE
THE NUMBER
OF HEIFERS YOU
NEED?



ARE YOU
MAXIMIZING THE
GENETIC POTENTIAL
OF YOUR HERD?



ARE YOU
RAISING TOO
MANY HEIFERS?

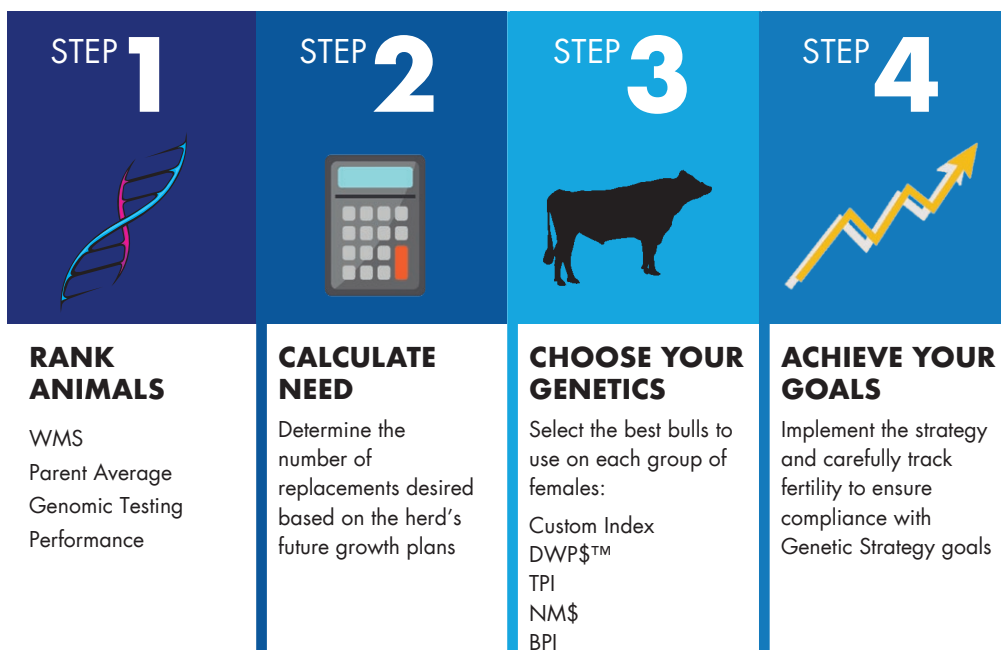


CAN YOU INCREASE
THE VALUE OF YOUR
BULL CALVES?



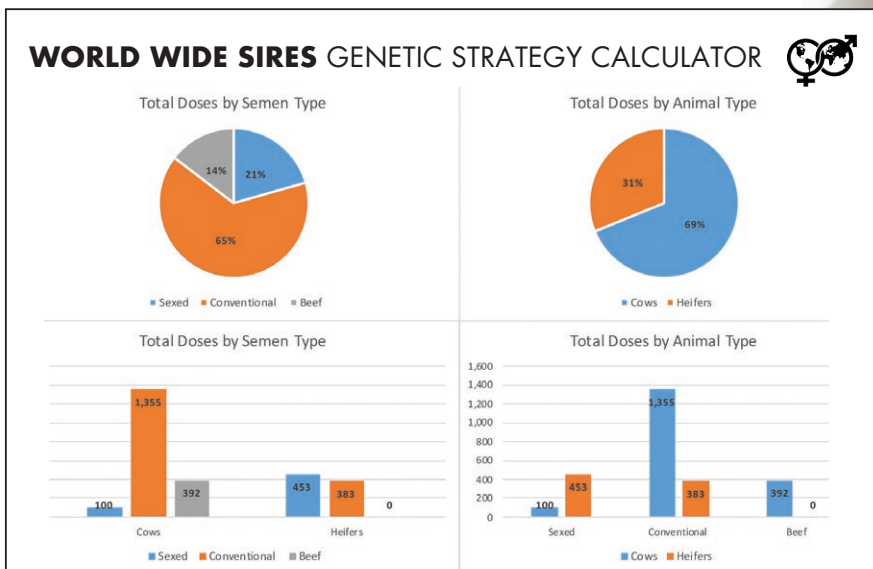
WORLD WIDE SIRES CAN HELP!

DEVELOP A GENETIC STRATEGY:



CONTACT YOUR WWS GENETIC ADVISOR

TO GET STARTED ON DEVELOPING YOUR GENETIC STRATEGY TODAY!



AZTEC

14HO14449 PEAK ALTAZTEC-ET
ROBSON X YODER X MCCUTCHE

NASIS: 80FFPHH BETA CASEIN: A2A2 BPI: 270 OT: 103 MS: 104
HOLSTEIN \$40 RRP



CDCB Genetic Eval. 08-19				
0 dtrs. 0 herds				
NM\$		933		
DWP\$		999		
PTAM		1440		
PTA%F	PTAF	0.12	87	
PTA%P	PTAP	0.07	65	
Rel.		78		
PL		7.8		
SCS		2.70		
DPR	FI	0.5	1.3	
SCR		NA		
SCE/Rel.		6.1/73		
Gestation Length		-1.5		



270 BPI*

COMPONENTS

HEALTH+

FERTILITYMAXX

CALVINGEASE

A2/A2

DAM: VIEW-HOME AZALEA-ET
2-03 2X 107D 3,706 KGM 3.7% 138 KGF 3.2% 120 KGP
MGD: VIEW-HOME MCC ALABAMA-ET GP-82
2-11 3X 305D 11,889 KGM 4.1% 493 KGF 3.1% 370 KGP

PHYSICAL TRAIT EVALUATION

CDCB/HA Genetic Eval. 08-19

0 dtrs. 0 herds

75% Rel.

PTAT: 1.41 UDC: 1.62 FLC: 0.87 TPI: 2728

Stature	Short																																																																																																																																																																																																																																																																																																																																																																																																																																																																																																																																																																																																																																																																																																																																																																																																																																																																																																																																																																																																																																																																																																																																																																																																																																																																																																																																																																																															</
---------	-------	--	--	--	--	--	--	--	--	--	--	--	--	--	--	--	--	--	--	--	--	--	--	--	--	--	--	--	--	--	--	--	--	--	--	--	--	--	--	--	--	--	--	--	--	--	--	--	--	--	--	--	--	--	--	--	--	--	--	--	--	--	--	--	--	--	--	--	--	--	--	--	--	--	--	--	--	--	--	--	--	--	--	--	--	--	--	--	--	--	--	--	--	--	--	--	--	--	--	--	--	--	--	--	--	--	--	--	--	--	--	--	--	--	--	--	--	--	--	--	--	--	--	--	--	--	--	--	--	--	--	--	--	--	--	--	--	--	--	--	--	--	--	--	--	--	--	--	--	--	--	--	--	--	--	--	--	--	--	--	--	--	--	--	--	--	--	--	--	--	--	--	--	--	--	--	--	--	--	--	--	--	--	--	--	--	--	--	--	--	--	--	--	--	--	--	--	--	--	--	--	--	--	--	--	--	--	--	--	--	--	--	--	--	--	--	--	--	--	--	--	--	--	--	--	--	--	--	--	--	--	--	--	--	--	--	--	--	--	--	--	--	--	--	--	--	--	--	--	--	--	--	--	--	--	--	--	--	--	--	--	--	--	--	--	--	--	--	--	--	--	--	--	--	--	--	--	--	--	--	--	--	--	--	--	--	--	--	--	--	--	--	--	--	--	--	--	--	--	--	--	--	--	--	--	--	--	--	--	--	--	--	--	--	--	--	--	--	--	--	--	--	--	--	--	--	--	--	--	--	--	--	--	--	--	--	--	--	--	--	--	--	--	--	--	--	--	--	--	--	--	--	--	--	--	--	--	--	--	--	--	--	--	--	--	--	--	--	--	--	--	--	--	--	--	--	--	--	--	--	--	--	--	--	--	--	--	--	--	--	--	--	--	--	--	--	--	--	--	--	--	--	--	--	--	--	--	--	--	--	--	--	--	--	--	--	--	--	--	--	--	--	--	--	--	--	--	--	--	--	--	--	--	--	--	--	--	--	--	--	--	--	--	--	--	--	--	--	--	--	--	--	--	--	--	--	--	--	--	--	--	--	--	--	--	--	--	--	--	--	--	--	--	--	--	--	--	--	--	--	--	--	--	--	--	--	--	--	--	--	--	--	--	--	--	--	--	--	--	--	--	--	--	--	--	--	--	--	--	--	--	--	--	--	--	--	--	--	--	--	--	--	--	--	--	--	--	--	--	--	--	--	--	--	--	--	--	--	--	--	--	--	--	--	--	--	--	--	--	--	--	--	--	--	--	--	--	--	--	--	--	--	--	--	--	--	--	--	--	--	--	--	--	--	--	--	--	--	--	--	--	--	--	--	--	--	--	--	--	--	--	--	--	--	--	--	--	--	--	--	--	--	--	--	--	--	--	--	--	--	--	--	--	--	--	--	--	--	--	--	--	--	--	--	--	--	--	--	--	--	--	--	--	--	--	--	--	--	--	--	--	--	--	--	--	--	--	--	--	--	--	--	--	--	--	--	--	--	--	--	--	--	--	--	--	--	--	--	--	--	--	--	--	--	--	--	--	--	--	--	--	--	--	--	--	--	--	--	--	--	--	--	--	--	--	--	--	--	--	--	--	--	--	--	--	--	--	--	--	--	--	--	--	--	--	--	--	--	--	--	--	--	--	--	--	--	--	--	--	--	--	--	--	--	--	--	--	--	--	--	--	--	--	--	--	--	--	--	--	--	--	--	--	--	--	--	--	--	--	--	--	--	--	--	--	--	--	--	--	--	--	--	--	--	--	--	--	--	--	--	--	--	--	--	--	--	--	--	--	--	--	--	--	--	--	--	--	--	--	--	--	--	--	--	--	--	--	--	--	--	--	--	--	--	--	--	--	--	--	--	--	--	--	--	--	--	--	--	--	--	--	--	--	--	--	--	--	--	--	--	--	--	--	--	--	--	--	--	--	--	--	--	--	--	--	--	--	--	--	--	--	--	--	--	--	--	--	--	--	--	--	--	--	--	--	--	--	--	--	--	--	--	--	--	--	--	--	--	--	--	--	--	--	--	--	--	--	--	--	--	--	--	--	--	--	--	--	--	--	--	--	--	--	--	--	--	--	--	--	--	--	--	--	--	--	--	--	--	--	--	--	--	--	--	--	--	--	--	--	--	--	--	--	--	--	--	--	--	--	--	--	--	--	--	--	--	--	--	--	--	--	--	--	--	--	--	--	--	--	--	--	--	--	--	--	--	--	--	--	--	--	--	--	--	--	--	--	--	--	--	--	--	--	--	--	--	--	--	--	--	--	--	--	--	--	--	--	--	--	--	--	--	--	--	--	--	--	--	--	--	--	--	--	--	--	--	--	--	--	--	--	--	--	--	--	--	--	--	--	--	--	--	--	--	--	--	--	--	--	--	--	--	--	--	--	--	--	--	--	--	--	--	--	--	--	--	--	--	--	--	--	--	--	--	--	--	--	--	--	--	--	--	--	--	--	--	--	--	--	--	--	--	--	--	--	--	--	--	--	--	--	--	--	--	--	--	--	--	--	--	--	--	--	--	--	--	--	--	--	--	--	--	--	--	--	--	--	--	--	--	--	--	--	--	--	--	--	--	--	--	--	--	--	--	--	--	--	--	--	--	--	--	--	--	--	--	--	--	--	--	--	--	--	--	--	--	--	--	--	--	--	--	--	--	--	--	--	--	--	--	--	--	--	--	--	--	--	--	--	--	--	--	--	--	--	--	--	--	--	--	--	--	--	--	--	--	--	--	--	--	--	--	--	--	--	--	--	--	--	--	--	--	--	--	--	--	--	--	--	--	--	--	--	--	--	--	--	--	--	--	--	--	--	--	--	--	--	--	--	--	--	--	--	--	--	--	--	--	--	--	--	--	--	--	--	--	--	--	--	--	--	--	--	--	--	--	--	--	--	--	--	--	--	--	--	--	--	--	--	--	--	--	--	--	--	--	--	--	--	--	--	--	--	--	--	--	--	--	--	--	--	--	--	--	--	--	--	--	--	--	--	--	--	--	--	--	--	--	--	--	--	--	--	--	--	--	--	--	--	--	--	--	--	----

DOCTOR

14HO07923 KINGEMERLING HELX DOCTOR-ET
HELI X YODER X DAY

NASIS: 80FFNH1 BETA CASEIN: A1A1 BPI: 252 OT: 99 MS: 104
HOLSTEIN \$50 RRP \$130 SEXED



CDCB Genetic Eval. 08-19				
0 dtrs. 0 herds				
NM\$		949		
DWP\$		868		
PTAM		1926		
PTA%F	PTAF	0.12	106	
PTA%P	PTAP	0.02	65	
Rel.		80		
PL		5.4		
SCS		2.85		
DPR	FI	2.2	2.3	
SCR		2.8		
SCE/Rel.		6.9/72		
Gestation Length		-2.1		



252 BPI*

COMPONENTS

HEALTH+

FERTILITYMAXX

CALVINGEASE

A2/A2

DAM: KINGEMERLING YODER DELLA-ET EX-90
2-00 3X 365D 18,030 KGM 3.7% 659 KGF 3.0% 549 KGP
MGD: MS JJR DAY DIXIE-ET VG-87
3-02 3X 364D 18,375 KGM 4.0% 740 KGF 3.1% 578 KGP

PHYSICAL TRAIT EVALUATION

CDCB/HA Genetic Eval. 08-19

0 dtrs. 0 herds

79% Rel.

PTAT: 2.37 UDC: 2.23 FLC: 1.31 TPI: 2839

Stature	Short																																																																																																																																																																																																																																																																																																																																																																																																																																																																																																																																																																																																																																																																																																																																																																																																																																																																																																																																																																																																																																																																																																																																																																																																																																																																																																																																																																																														
---------	-------	--	--	--	--	--	--	--	--	--	--	--	--	--	--	--	--	--	--	--	--	--	--	--	--	--	--	--	--	--	--	--	--	--	--	--	--	--	--	--	--	--	--	--	--	--	--	--	--	--	--	--	--	--	--	--	--	--	--	--	--	--	--	--	--	--	--	--	--	--	--	--	--	--	--	--	--	--	--	--	--	--	--	--	--	--	--	--	--	--	--	--	--	--	--	--	--	--	--	--	--	--	--	--	--	--	--	--	--	--	--	--	--	--	--	--	--	--	--	--	--	--	--	--	--	--	--	--	--	--	--	--	--	--	--	--	--	--	--	--	--	--	--	--	--	--	--	--	--	--	--	--	--	--	--	--	--	--	--	--	--	--	--	--	--	--	--	--	--	--	--	--	--	--	--	--	--	--	--	--	--	--	--	--	--	--	--	--	--	--	--	--	--	--	--	--	--	--	--	--	--	--	--	--	--	--	--	--	--	--	--	--	--	--	--	--	--	--	--	--	--	--	--	--	--	--	--	--	--	--	--	--	--	--	--	--	--	--	--	--	--	--	--	--	--	--	--	--	--	--	--	--	--	--	--	--	--	--	--	--	--	--	--	--	--	--	--	--	--	--	--	--	--	--	--	--	--	--	--	--	--	--	--	--	--	--	--	--	--	--	--	--	--	--	--	--	--	--	--	--	--	--	--	--	--	--	--	--	--	--	--	--	--	--	--	--	--	--	--	--	--	--	--	--	--	--	--	--	--	--	--	--	--	--	--	--	--	--	--	--	--	--	--	--	--	--	--	--	--	--	--	--	--	--	--	--	--	--	--	--	--	--	--	--	--	--	--	--	--	--	--	--	--	--	--	--	--	--	--	--	--	--	--	--	--	--	--	--	--	--	--	--	--	--	--	--	--	--	--	--	--	--	--	--	--	--	--	--	--	--	--	--	--	--	--	--	--	--	--	--	--	--	--	--	--	--	--	--	--	--	--	--	--	--	--	--	--	--	--	--	--	--	--	--	--	--	--	--	--	--	--	--	--	--	--	--	--	--	--	--	--	--	--	--	--	--	--	--	--	--	--	--	--	--	--	--	--	--	--	--	--	--	--	--	--	--	--	--	--	--	--	--	--	--	--	--	--	--	--	--	--	--	--	--	--	--	--	--	--	--	--	--	--	--	--	--	--	--	--	--	--	--	--	--	--	--	--	--	--	--	--	--	--	--	--	--	--	--	--	--	--	--	--	--	--	--	--	--	--	--	--	--	--	--	--	--	--	--	--	--	--	--	--	--	--	--	--	--	--	--	--	--	--	--	--	--	--	--	--	--	--	--	--	--	--	--	--	--	--	--	--	--	--	--	--	--	--	--	--	--	--	--	--	--	--	--	--	--	--	--	--	--	--	--	--	--	--	--	--	--	--	--	--	--	--	--	--	--	--	--	--	--	--	--	--	--	--	--	--	--	--	--	--	--	--	--	--	--	--	--	--	--	--	--	--	--	--	--	--	--	--	--	--	--	--	--	--	--	--	--	--	--	--	--	--	--	--	--	--	--	--	--	--	--	--	--	--	--	--	--	--	--	--	--	--	--	--	--	--	--	--	--	--	--	--	--	--	--	--	--	--	--	--	--	--	--	--	--	--	--	--	--	--	--	--	--	--	--	--	--	--	--	--	--	--	--	--	--	--	--	--	--	--	--	--	--	--	--	--	--	--	--	--	--	--	--	--	--	--	--	--	--	--	--	--	--	--	--	--	--	--	--	--	--	--	--	--	--	--	--	--	--	--	--	--	--	--	--	--	--	--	--	--	--	--	--	--	--	--	--	--	--	--	--	--	--	--	--	--	--	--	--	--	--	--	--	--	--	--	--	--	--	--	--	--	--	--	--	--	--	--	--	--	--	--	--	--	--	--	--	--	--	--	--	--	--	--	--	--	--	--	--	--	--	--	--	--	--	--	--	--	--	--	--	--	--	--	--	--	--	--	--	--	--	--	--	--	--	--	--	--	--	--	--	--	--	--	--	--	--	--	--	--	--	--	--	--	--	--	--	--	--	--	--	--	--	--	--	--	--	--	--	--	--	--	--	--	--	--	--	--	--	--	--	--	--	--	--	--	--	--	--	--	--	--	--	--	--	--	--	--	--	--	--	--	--	--	--	--	--	--	--	--	--	--	--	--	--	--	--	--	--	--	--	--	--	--	--	--	--	--	--	--	--	--	--	--	--	--	--	--	--	--	--	--	--	--	--	--	--	--	--	--	--	--	--	--	--	--	--	--	--	--	--	--	--	--	--	--	--	--	--	--	--	--	--	--	--	--	--	--	--	--	--	--	--	--	--	--	--	--	--	--	--	--	--	--	--	--	--	--	--	--	--	--	--	--	--	--	--	--	--	--	--	--	--	--	--	--	--	--	--	--	--	--	--	--	--	--	--	--	--	--	--	--	--	--	--	--	--	--	--	--	--	--	--	--	--	--	--	--	--	--	--	--	--	--	--	--	--	--	--	--	--	--	--	--	--	--	--	--	--	--	--	--	--	--	--	--	--	--	--	--	--	--	--	--	--	--	--	--	--	--	--	--	--	--	--	--	--	--	--	--	--	--	--	--	--	--	--	--	--	--	--	--	--	--	--	--	--	--	--	--	--	--	--	--	--	--	--	--	--	--	--	--	--	--	--	--	--	--	--	--	--	--	--	--	--	--	--	--	--	--	--	--	--	--	--	--	--	--	--	--	--	--	--	--	--	--	--	--	--	--	--	--	--	--	--	--	--	--	--	--	--	--	--	--	--	--	--	--	--	--	--	--	--	--	--	--	--	--	--	--	--	--	--	--	--	--	--	--	--	--	--	--	--	--	--	--	--	--	--	--	--	--	--	--	--	--	--	--	--	--	--	--	--	--	--	--	--	--	--	--	--	--	--	--	--	--	--	--	--	--	--	--	--	--	--	--	--	--	--	--	--	--	--	--	--	--	--	--	--	--	--	--	--	--	--	--	--	--	--	--	--	--	--	--	--	--	--	--	--	--	--	--	--	--	--	--	--	--	--	--

BASIC

14HO14129 BLUMENFELD FRAZLD BASIC-ET
FRAZZLED X SPRING X HEADLINER

NASIS: 80FFPEL BETA CASEIN: A2A2 BPI: 288 OT: 101 MS: 105
HOLSTEIN \$50 RRP \$70 SEXED



CDCB Genetic Eval. 08-19				
0 dtrs. 0 herds				
NM\$		902		
DWP\$		1048		
PTAM		1709		
PTA%F	PTAF	0.07	83	
PTA%P	PTAP	0.02	57	
Rel.		80		
PL		7.4		
SCS		2.53		
DPR	FI	0.8	1.3	
SCR		0.6		
SCE/Rel.		7.2/71		
Gestation Length		-1.9		



288 BPI

COMPONENTS

HEALTH+

FERTILITYMAXX

CALVINGEASE

A2/A2

DAM: BLUMENFELD 4508 SPR 5054-ET VG-87
2-03 3X 301D 13,018 KGM 4.9% 635 KGF 3.2% 421 KGP
MGD: PEACH-STATE HL RACHELET VG-85
3-03 3X 333D 17,658 KGM 4.1% 717 KGF 3.1% 554 KGP

PHYSICAL TRAIT EVALUATION

CDCB/HA Genetic Eval. 08-19

0 dtrs. 0 herds

77% Rel.

PTAT: 2.19 UDC: 2.69 FLC: 1.45 TPI: 2769

Stature	Short	<div></div>	0.95	Tall
Strength	Frail	<div></div>	0.67	Strong
Body Depth	Shallow	<div></div>	0.31	Deep
Dairy Form	Tight Ribbed	<div></div>	0.87	Open Ribbed
Rump Width	Narrow	<div></div>	0.68	Wide
Rump Angle	High Pins	<div></div>	-0.34	Sloped
Rear Leg (side view)	Posty	<div></div>	-0.41	Sickled
Rear Leg (rear view)	Hock-in	<div></div>	1.52	Straight
Foot Angle	Low Angle	<div></div>	1.30	Steep Angle
Feet & Leg Score	Low	<div></div>	1.52	High
Fore Udder	Loose	<div></div>	2.87	Strong
Rear Udder Height	Low	<div></div>	3.55	High
Rear Udder Width	Narrow	<div></div>	3.27	Wide
Udder Cleft	Weak	<div></div>	1.40	Strong
Udder Depth	Deep	<div></div>	2.24	Shallow
Front Teat Placement	Wide	<div></div>	1.41	Close
Rear Teat Placement	Wide	<div></div>	1.70	Close
Teat Length	Short	<div></div>	-0.39	Long

DUKE

250HO13267 S-S-I MONTROSS DUKE-ET
MONTROSS X SUPERSIRE X SNOWMAN

NASIS: 80FFGCB BETA CASEIN: A1A2 BPI: 258 OT: 108 MS: 106
HOLSTEIN \$45 RRP



IB/M-USA 08-19				
1119 dtrs. 409 herds				
NM\$		935		
DWP\$		878		
PTAM		2798		
PTA%F	PTAF	0.10	134	
PTA%P	PTAP	0.03	95	
Rel.		98		
PL		4.1		
SCS		2.87		
DPR	FI	-2.4	-2.1	
SCR		1.1		
SCE/Rel.		9.7/99		
Gestation Length		-3.8		



258 BPI

COMPONENTS

HEALTH+

FERTILITYMAXX

CALVINGEASE

A2/A2

DAM: S-S-I SPRSIRE MABEL 8828-ET VG-85
3-05 3X 362D 16,121 KGM 4.1% 665 KGF 3.4% 554 KGP
MGD: S-S-I SNOW MALENA 7514-ET GP-80
4-02 3X 356D 18,470 KGM 3.7% 685 KGF 3.1% 579 KGP

PHYSICAL TRAIT EVALUATION

CDCB/HA Genetic Eval. 08-19

619 dtrs. 279 herds

96% Rel.

PTAT: 1.97 UDC: 1.97 FLC: -0.40 TPI: 2758

Stature	Short			1.39	Tall
Strength	Frail			1.96	Strong
Body Depth	Shallow			2.04	Deep
Dairy Form	Tight Ribbed			2.42	Open Ribbed
Rump Width	Narrow			1.32	Wide
Rump Angle	High Pins			0.38	Sloped
Rear Leg (side view)	Posty			0.20	Sickled
Rear Leg (rear view)	Hock-in			-0.87	Straight
Foot Angle	Low Angle			0.36	Steep Angle
Feet & Leg Score	Low			0.06	High
Fore Udder	Loose			2.21	Strong
Rear Udder Height	Low			3.72	High
Rear Udder Width	Narrow			3.42	Wide
Udder Cleft	Weak			0.60	Strong
Udder Depth	Deep			0.03	Shallow
Front Teat Placement	Wide			1.24	Close
Rear Teat Placement	Wide			0.91	Close
Teat Length	Short			0.09	Long

FORTE

7HO14319 OCD HELIX FORTE-ET TR TP TC TY TV TL TD

HELIX X DELTA X NUMERO UNO

NASIS: 80FFPHN **BETA CASEIN:** A1A2 **BPI:** 335 **OT:** 101 **MS:** 103

HOLSTEIN \$50 RRP \$130 SEXED



MGGD: Lars-Acres Felices Fame-ET EX-91

CDCB Genetic Eval. 08-19

0 dtrs. 0 herds			
NM\$			970
DWP\$			1121
PTAM			1197
PTA%F	PTAF	0.24	111
PTA%P	PTAP	0.06	53
Rel.			80
PL			6.5
SCS			2.64
DPR	FI	1.4	1.3
SCR			2.9
SCE/Rel.		7.4/70	
Gestation Length			-1.5



DAM: OCD DELTA FRANCES 34899-ET VG-85

2-03 3X 365D 10,591 KGM 4.4% 467 KGF 3.4% 361 KGP

MGD: OCD NUMEROUSO FRANCES 2-ETN GP-82

4-00 3X 317D 15,109 KGM 4.0% 604 KGF 3.2% 480 KGP

PHYSICAL TRAIT EVALUATION

CDCB/HA Genetic Eval. 08-19
0 dtrs. 0 herds
79% Rel.

PTAT: 2.25	UDC: 2.82	FLC: 1.41	TPI: 2833	
Stature	Short			1.52 Tall
Strength	Frail			0.68 Strong
Body Depth	Shallow			0.60 Deep
Dairy Form	Tight Ribbed			0.89 Open Ribbed
Rump Width	Narrow			0.07 Wide
Rump Angle	High Pins			-0.44 Sloped
Rear Leg (side view)	Posty			-0.51 Sickled
Rear Leg (rear view)	Hock-in			1.26 Straight
Foot Angle	Low Angle			2.33 Steep Angle
Feet & Leg Score	Low			1.58 High
Fore Udder	Loose			3.29 Strong
Rear Udder Height	Low			3.64 High
Rear Udder Width	Narrow			3.35 Wide
Udder Cleft	Weak			1.71 Strong
Udder Depth	Deep			2.78 Shallow
Front Teat Placement	Wide			1.49 Close
Rear Teat Placement	Wide			1.46 Close
Teat Length	Short			-0.60 Long

FREEDOM

7HO14455 T-SPRUCE FRAZZLD FREEDOM-ET

FRAZZLED X PROFIT X JACEY

NASIS: 80FFPES **BETA CASEIN:** A2A2 **BPI:** 286 **OT:** 104 **MS:** 105

HOLSTEIN \$36 RRP \$75 SEXED



MGGD: T-Spruce Jacey 8120-ET GP-82

CDCB Genetic Eval. 08-19

0 dtrs. 0 herds			
NM\$			848
DWP\$			1134
PTAM			1934
PTA%F	PTAF	0.01	76
PTA%P	PTAP	0.01	62
Rel.			79
PL			7.1
SCS			2.46
DPR	FI	-0.1	0.3
SCR			1.1
SCE/Rel.		7.1/71	
Gestation Length			-3.3



DAM: T-SPRUCE PROFIT 9335-ET G-78

2-02 3X 305D 14,485 KGM 3.6% 524 KGF 3.3% 471 KGP

MGD: T-SPRUCE JACEY 8120-ET GP-82

2-02 3X 305D 15,418 KGM 3.1% 479 KGF 3.0% 457 KGP

PHYSICAL TRAIT EVALUATION

CDCB/HA Genetic Eval. 08-19
0 dtrs. 0 herds
78% Rel.

PTAT: 0.98	UDC: 1.82	FLC: 0.58	TPI: 2613	
Stature	Short			0.46 Tall
Strength	Frail			-0.61 Strong
Body Depth	Shallow			-0.68 Deep
Dairy Form	Tight Ribbed			1.00 Open Ribbed
Rump Width	Narrow			-0.29 Wide
Rump Angle	High Pins			0.55 Sloped
Rear Leg (side view)	Posty			-0.35 Sickled
Rear Leg (rear view)	Hock-in			0.49 Straight
Foot Angle	Low Angle			0.69 Steep Angle
Feet & Leg Score	Low			0.63 High
Fore Udder	Loose			1.45 Strong
Rear Udder Height	Low			2.95 High
Rear Udder Width	Narrow			2.71 Wide
Udder Cleft	Weak			0.10 Strong
Udder Depth	Deep			1.33 Shallow
Front Teat Placement	Wide			0.30 Close
Rear Teat Placement	Wide			0.46 Close
Teat Length	Short			-0.88 Long

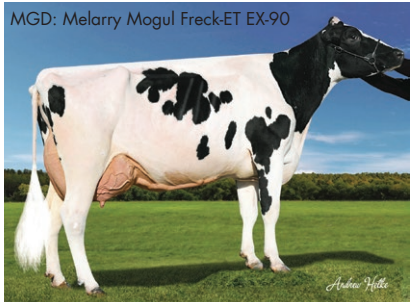
FUTURE

7HO14333 MELARRY FRAZZLED FUTURE-ET

FRAZZLED X BALISTO X MOGUL

NASIS: 80FFPBL **BETA CASEIN:** A2A2 **BPI:** 251 **OT:** 101 **MS:** 100

HOLSTEIN \$40 RRP



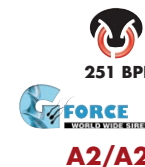
MGGD: Melarry Mogul Freck-ET EX-90

CDCB Genetic Eval. 08-19

0 dtrs. 0 herds			
NM\$			941
DWP\$			1110
PTAM			1922
PTA%F	PTAF	0.09	99
PTA%P	PTAP	0.04	70
Rel.			80
PL			6.7
SCS			2.68
DPR	FI	0.1	0.6
SCR			0.4
SCE/Rel.		8.0/89	
Gestation Length			-1.9



MGGD: Melarry Super Freestyle-ET EX-90



DAM: MELARRY BALISTO FARRAH-ET VG-85

2-04 2X 305D 14,145 KGM 3.7% 523 KGF 3.3% 463 KGP

MGD: MELARRY MOGUL FRECK-ET EX-90

4-08 2X 365D 22,525 KGM 3.3% 737 KGF 2.8% 634 KGP

PHYSICAL TRAIT EVALUATION

CDCB/HA Genetic Eval. 08-19
0 dtrs. 0 herds
78% Rel.

PTAT: 1.39	UDC: 1.45	FLC: 0.58	TPI: 2717	
Stature	Short			0.52 Tall
Strength	Frail			0.13 Strong
Body Depth	Shallow			0.17 Deep
Dairy Form	Tight Ribbed			1.25 Open Ribbed
Rump Width	Narrow			-0.51 Wide
Rump Angle	High Pins			0.12 Sloped
Rear Leg (side view)	Posty			0.45 Sickled
Rear Leg (rear view)	Hock-in			0.34 Straight
Foot Angle	Low Angle			0.89 Steep Angle
Feet & Leg Score	Low			0.67 High
Fore Udder	Loose			1.83 Strong
Rear Udder Height	Low			2.45 High
Rear Udder Width	Narrow			2.25 Wide
Udder Cleft	Weak			-0.09 Strong
Udder Depth	Deep			0.65 Shallow
Front Teat Placement	Wide			0.39 Close
Rear Teat Placement	Wide			0.13 Close
Teat Length	Short			0.86 Long

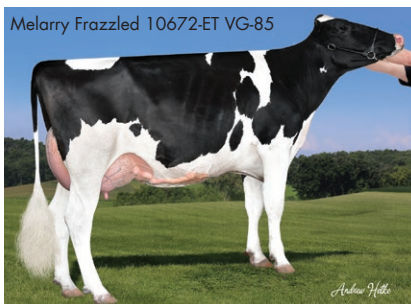
FRAZZLED

7HO12788 MELARRY JOSUPER FRAZZLED-ET

JOSUPER X SHOTGLASS X ROBUST

NASIS: 80FFMCN **BETA CASEIN:** A2A2 **BPI:** 284 **OT:** 100 **MS:** 102

HOLSTEIN \$55 RRP \$70 SEXED



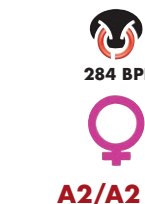
Melarry Frazzled 10672-ET VG-85

CDCB Genetic Eval. 08-19

287 dtrs. 55 herds			
NM\$			970
DWP\$			1159
PTAM			2158
PTA%F	PTAF	0.07	100
PTA%P	PTAP	0.00	65
Rel.			97
PL			7.9
SCS			2.46
DPR	FI	-0.6	0.2
SCR			0.6
SCE/Rel.		7.9/99	
Gestation Length			-2.5



MGGD: Melarry Super Freestyle-ET EX-90



DAM: MELARRY SHOTGLASS FRAZZLE EX-90

3-07 2X 365D 15,685 KGM 4.0% 631 KGF 3.1% 493 KGP

MGD: MELARRY ROBUST FUTURE-ET VG-85

3-04 2X 365D 14,851 KGM 4.5% 672 KGF 3.4% 499 KGP

PHYSICAL TRAIT EVALUATION

CDCB/HA Genetic Eval. 08-19
44 dtrs. 22 herds
90% Rel.

PTAT: 1.23	UDC: 1.68	FLC: 0.57	TPI: 2731	
Stature	Short			-0.09 Tall
Strength	Frail			0.11 Strong
Body Depth	Shallow			-0.45 Deep
Dairy Form	Tight Ribbed			0.18 Open Ribbed
Rump Width	Narrow			-0.02 Wide
Rump Angle	High Pins			0.03 Sloped
Rear Leg (side view)	Posty			0.08 Sickled
Rear Leg (rear view)	Hock-in			0.32 Straight
Foot Angle	Low Angle			0.62 Steep Angle
Feet & Leg Score	Low			0.52 High
Fore Udder	Loose			1.64 Strong
Rear Udder Height	Low			2.43 High
Rear Udder Width	Narrow			2.24 Wide
Udder Cleft	Weak			0.24 Strong
Udder Depth	Deep			0.99 Shallow
Front Teat Placement	Wide			0.21 Close
Rear Teat Placement	Wide			0.25 Close
Teat Length	Short			-0.57 Long

JUDGE

14HO14225 S-S-I BR JAGUAR JUDGE-ET^{TR TP TC TY TV TL TD}

JAGUAR X DELTA X EPIC

NASIS: 80FFPEX **BETA CASEIN:** A2A2 **BPI:** 244 **OT:** 99 **MS:** 101

HOLSTEIN \$34 RRP \$70 SEXED

4th Dam: Penny VG-89



CDCB Genetic Eval. 08-19
0 dtrs. 0 herds

NM\$	853		
DWP\$	968		
PTAM	1991		
PTA%F	PTAF	0.08	96
PTA%P	PTAP	0.05	74
Rel.	78		
PL	5.8		
SCS	2.84		
DPR	FI	-2.2	-1.7
SCR	4.0		
SCE/Rel.	7.1/62		
Gestation Length	0.1		



COMPONENTS

FERTILITYMAXX



244 BPI



A2/A2

DAM: MISS PRESSLEY PERFECT-TW

MGD: HOS-COT EPIC PRESSLEY-ET VG-85

3-00 2X 346D 16,216 KGM 4.3% 690 KGF 3.4% 555 KGP

PHYSICAL TRAIT EVALUATION

CDCB/HA Genetic Eval. 08-19
0 dtrs. 0 herds
76% Rel.

PTAT: 1.31 UDC: 1.60 FLC: 0.96 TPI: 2606

Stature	Short			0.76	Tall
Strength	Frail			0.44	Strong
Body Depth	Shallow			0.22	Deep
Dairy Form	Tight Ribbed			0.79	Open Ribbed
Rump Width	Narrow			0.19	Wide
Rump Angle	High Pins			1.34	Sloped
Rear Leg (side view)	Posty			-0.10	Sickled
Rear Leg (rear view)	Hock-in			0.74	Straight
Foot Angle	Low Angle			1.00	Steep Angle
Feet & Leg Score	Low			1.10	High
Fore Udder	Loose			1.46	Strong
Rear Udder Height	Low			2.67	High
Rear Udder Width	Narrow			2.46	Wide
Udder Cleft	Weak			0.55	Strong
Udder Depth	Deep			1.03	Shallow
Front Teat Placement	Wide			-0.06	Close
Rear Teat Placement	Wide			0.10	Close
Teat Length	Short			-0.17	Long

HONOR

14HO14321 PLAIN-KNOLL MODESTY HONOR

MODESTY X JOSUPER X OBSERVER

NASIS: 80FFPEW **BETA CASEIN:** A2A2 **BPI:** 166 **OT:** 102 **MS:** 103

HOLSTEIN \$36 RRP \$70 SEXED

MGD: S-S-I Observ Manteca
7197-ET VG-87



CDCB Genetic Eval. 08-19
0 dtrs. 0 herds

NM\$			890
DWP\$			1016
PTAM			1382
PTA%F	PTAF	0.13	89
PTA%P	PTAP	0.03	50
Rel.			80
PL			7.0
SCS			2.72
DPR	FI	0.4	0.6
SCR			1.4
SCE/Rel.		6.3/71	
Gestation Length			-2.4



FERTILITYMAXX



A2/A2

DAM: PLAIN-KNOLL JOSUPER 754-TW GP-82

2-09 3X 305D 13,989 KGM 4.1% 576 KGF 3.1% 436 KGP

MGD: S-S-I OBSERV MANTECA7197-ET VG-87

3-04 3X 342D 16,220 KGM 3.7% 606 KGF 3.1% 502 KGP

PHYSICAL TRAIT EVALUATION

CDCB/HA Genetic Eval. 08-19
0 dtrs. 0 herds
79% Rel.

PTAT: 1.47 UDC: 2.21 FLC: 1.22 TPI: 2657

Stature	Short			-0.15	Tall
Strength	Frail			-0.30	Strong
Body Depth	Shallow			-0.62	Deep
Dairy Form	Tight Ribbed			0.24	Open Ribbed
Rump Width	Narrow			-0.25	Wide
Rump Angle	High Pins			-0.54	Sloped
Rear Leg (side view)	Posty			0.57	Sickled
Rear Leg (rear view)	Hock-in			0.64	Straight
Foot Angle	Low Angle			0.65	Steep Angle
Feet & Leg Score	Low			1.25	High
Fore Udder	Loose			2.66	Strong
Rear Udder Height	Low			2.55	High
Rear Udder Width	Narrow			2.35	Wide
Udder Cleft	Weak			0.47	Strong
Udder Depth	Deep			1.76	Shallow
Front Teat Placement	Wide			1.10	Close
Rear Teat Placement	Wide			0.90	Close
Teat Length	Short			-0.71	Long

HUEY

7HO14125 T-SPRUCE FRAZZLED HUEY-ET^{TR TP TC TY TV TL TD}

FRAZZLED X SILVER X LIQUID GOLD

NASIS: 80FFPBM **BETA CASEIN:** A2A2 **BPI:** 245 **OT:** 100 **MS:** 102

HOLSTEIN \$50 RRP \$100 SEXED

5th Dam: Coyne-Farms Ramos Jelly
VG-85



CDCB Genetic Eval. 08-19
0 dtrs. 0 herds

NM\$	964		
DWP\$	1058		
PTAM	1479		
PTA%F	PTAF	0.18	106
PTA%P	PTAP	0.05	58
Rel.	80		
PL	7.0		
SCS	2.59		
DPR	FI	1.2	1.8
SCR	NA		
SCE/Rel.	6.5/87		
Gestation Length	-0.8		



HEALTH+

CALVINGEASE

COMPONENTS

A2/A2



DAM: T-SPRUCE SILVER 9280-ET GP-83

2-05 3X 305D 19,001 KGM 4.4% 828 KGF 3.3% 635 KGP

MGD: T-SPRUCE LGOLD 7871-ET GP-83

3-08 3X 305D 12,537 KGM 4.5% 569 KGF 3.6% 447 KGP

PHYSICAL TRAIT EVALUATION

CDCB/HA Genetic Eval. 08-19
0 dtrs. 0 herds
78% Rel.

PTAT: 1.81 UDC: 1.82 FLC: 1.33 TPI: 2800

Stature	Short			1.36	Tall
Strength	Frail			0.77	Strong
Body Depth	Shallow			0.60	Deep
Dairy Form	Tight Ribbed			0.94	Open Ribbed
Rump Width	Narrow			-0.10	Wide
Rump Angle	High Pins			0.77	Sloped
Rear Leg (side view)	Posty			-0.11	Sickled
Rear Leg (rear view)	Hock-in			1.45	Straight
Foot Angle	Low Angle			1.14	Steep Angle
Feet & Leg Score	Low			1.52	High
Fore Udder	Loose			1.64	Strong
Rear Udder Height	Low			3.00	High
Rear Udder Width	Narrow			2.76	Wide
Udder Cleft	Weak			0.75	Strong
Udder Depth	Deep			1.50	Shallow
Front Teat Placement	Wide			0.60	Close
Rear Teat Placement	Wide			0.40	Close
Teat Length	Short			-0.34	Long

HELIX

14HO07770 AOT SILVER HELIX-ET^{TR TP TY TV TL TD}

SILVER X SUPERSIRE X MAN-O-MAN

NASIS: 80FFMAP **BETA CASEIN:** A1A2 **BPI:** 299 **OT:** 102 **MS:** 103

HOLSTEIN \$65 RRP \$140 SEXED

B-S-D Helix
Calybe 7322-ET
GP-81



CDCB Genetic Eval. 08-19
1015 dtrs. 141 herds

NM\$	978		
DWP\$	960		
PTAM	2254		
PTA%F	PTAF	0.17	133
PTA%P	PTAP	0.04	80
Rel.	99		
PL	4.0		
SCS	3.03		
DPR	FI	0.7	0.3
SCR	-0.4		
SCE/Rel.	7.2/99		
Gestation Length	-2.2		



299 BPI



DAM: COOKIECUTTER SSIRE HAS-ET VG-88

3-11 3X 365D 19,895 KGM 4.0% 792 KGF 3.2% 636 KGP

MGD: COOKIECUTTER MOM HALO-ET VG-88

2-00 3X 365D 16,003 KGM 5.2% 825 KGF 3.5% 561 KGP

PHYSICAL TRAIT EVALUATION

CDCB/HA Genetic Eval. 08-19
139 dtrs. 55 herds
95% Rel.

PTAT: 1.90 UDC: 1.66 FLC: 0.98 TPI: 2811

Stature	Short			2.04	Tall
Strength	Frail			0.84	Strong
Body Depth	Shallow			1.07	Deep
Dairy Form	Tight Ribbed			1.53	Open Ribbed
Rump Width	Narrow			-0.13	Wide
Rump Angle	High Pins			0.40	Sloped
Rear Leg (side view)	Posty			0.89	Sickled
Rear Leg (rear view)	Hock-in			0.97	Straight
Foot Angle	Low Angle			1.45	Steep Angle
Feet & Leg Score	Low			1.36	High
Fore Udder	Loose			1.51	Strong
Rear Udder Height	Low			2.96	High
Rear Udder Width	Narrow			2.72	Wide
Udder Cleft	Weak			1.03	Strong
Udder Depth	Deep			1.33	Shallow
Front Teat Placement	Wide			1.23	Close
Rear Teat Placement	Wide			1.38	Close
Teat Length	Short			-0.27	Long

MONTLEY

7HO14615 S-S-I HODEDOE MONTLEY-ET TR TP TC TY TV TL TD

HODEDOE X BANDARES X KINGBOY

NASIS: 80FFRBG BETA CASEIN: A2A2 BPI: 275 OT: 100 MS: 103

HOLSTEIN \$50 RRP



CDCB Genetic Eval. 08-19

0 dtrs. 0 herds			
NM\$			900
DWP\$			1038
PTAM			590
PTA%F	PTAF	0.20	77
PTA%P	PTAP	0.12	52
Rel.			77
PL			7.8
SCS			2.69
DPR	FI	3.8	4.1
SCR			NA
SCE/Rel.			7.5/63
Gestation Length			-0.9



HEALTH+

COMPONENTS

A2/A2

DAM: S-S-I BANDARES 673 7679-ET VG-85
1-11 2X 281D 7,695 KGM 4.5% 350 KGF 3.4% 265 KGP
MGD: PLAIN-KNOLL KINGBOY 673-ET VG-85
2-00 3X 305D 12,687 KGM 3.6% 461 KGF 3.2% 412 KGP

PHYSICAL TRAIT EVALUATION

CDCB/HA Genetic Eval. 08-19
0 dtrs. 0 herds
76% Rel.

PTAT: 1.86 UDC: 2.30 FLC: 1.23 TPI: 2802

Stature	Short			1.84	Tall
Strength	Frail			0.40	Strong
Body Depth	Shallow			0.10	Deep
Dairy Form	Tight Ribbed			0.37	Open Ribbed
Rump Width	Narrow			0.44	Wide
Rump Angle	High Pins			1.01	Sloped
Rear Leg (side view)	Posty			-1.74	Sickled
Rear Leg (rear view)	Hock-in			1.14	Straight
Foot Angle	Low Angle			2.13	Steep Angle
Feet & Leg Score	Low			1.50	High
Fore Udder	Loose			2.57	Strong
Rear Udder Height	Low			3.17	High
Rear Udder Width	Narrow			2.92	Wide
Udder Cleft	Weak			1.17	Strong
Udder Depth	Deep			2.91	Shallow
Front Teat Placement	Wide			0.72	Close
Rear Teat Placement	Wide			0.78	Close
Teat Length	Short			-1.10	Long

ROME

14HO14226 DE-SU FRAZZLD ROME 14192-ET

FRAZZLED X YODER X SHAMROCK

NASIS: 80FFPFM BETA CASEIN: A2A2 BPI: 292 OT: 98 MS: 100

HOLSTEIN \$200 SEXED



CDCB Genetic Eval. 08-19

0 dtrs. 0 herds			
NM\$			1040
DWP\$			1216
PTAM			1542
PTA%F	PTAF	0.19	112
PTA%P	PTAP	0.06	63
Rel.			80
PL			8.3
SCS			2.44
DPR	FI	1.4	1.8
SCR			NA
SCE/Rel.			8.0/73
Gestation Length			-1



HEALTH+

COMPONENTS

A2/A2

DAM: DE-SU YODER 4786-ET GP-81
2-00 3X 283D 11,290 KGM 5.1% 570 KGF 3.3% 376 KGP
MGD: DE-SU 1438-ET EX-90
4-10 3X 365D 18,021 KGM 4.5% 818 KGF 3.0% 548 KGP

PHYSICAL TRAIT EVALUATION

CDCB/HA Genetic Eval. 08-19
0 dtrs. 0 herds
78% Rel.

PTAT: 1.10 UDC: 1.20 FLC: 0.32 TPI: 2816

Stature	Short			0.16	Tall
Strength	Frail			-0.13	Strong
Body Depth	Shallow			-0.01	Deep
Dairy Form	Tight Ribbed			1.14	Open Ribbed
Rump Width	Narrow			-0.85	Wide
Rump Angle	High Pins			0.94	Sloped
Rear Leg (side view)	Posty			-0.44	Sickled
Rear Leg (rear view)	Hock-in			0.19	Straight
Foot Angle	Low Angle			0.00	Steep Angle
Feet & Leg Score	Low			0.38	High
Fore Udder	Loose			1.16	Strong
Rear Udder Height	Low			2.22	High
Rear Udder Width	Narrow			2.04	Wide
Udder Cleft	Weak			-0.20	Strong
Udder Depth	Deep			0.31	Shallow
Front Teat Placement	Wide			0.94	Close
Rear Teat Placement	Wide			0.52	Close
Teat Length	Short			-1.77	Long

MOTION

14HO14448 PEAK MOTION-ET TR TP TC TY TV TL TD

ROBSON X MEGASIRE X STERLING

NASIS: 80FFPEY BETA CASEIN: A2A2 BPI: 280 OT: 102 MS: 102

HOLSTEIN \$40 RRP



CDCB Genetic Eval. 08-19

0 dtrs. 0 herds			
NM\$			918
DWP\$			975
PTAM			606
PTA%F	PTAF	0.26	93
PTA%P	PTAP	0.11	50
Rel.			77
PL			7.5
SCS			2.81
DPR	FI	3.0	3.2
SCR			0.8
SCE/Rel.			6.4/69
Gestation Length			-3



HEALTH+

COMPONENTS

CALVING EASE

A2/A2

DAM: NFG-ST SIDNEY MEG 54685-ET GP-83
2-01 2X 365D 13,871 KGM 4.0% 551 KGF 3.2% 450 KGP
MGD: S-S-I STRLING SIDNEY 8732-ET

PHYSICAL TRAIT EVALUATION

CDCB/HA Genetic Eval. 08-19
0 dtrs. 0 herds
7% Rel.

PTAT: 1.11 UDC: 1.39 FLC: 0.63 TPI: 2700

Stature	Short			0.69	Tall
Strength	Frail			0.28	Strong
Body Depth	Shallow			-0.10	Deep
Dairy Form	Tight Ribbed			0.34	Open Ribbed
Rump Width	Narrow			1.36	Wide
Rump Angle	High Pins			-1.20	Sloped
Rear Leg (side view)	Posty			1.24	Sickled
Rear Leg (rear view)	Hock-in			0.80	Straight
Foot Angle	Low Angle			0.23	Steep Angle
Feet & Leg Score	Low			0.73	High
Fore Udder	Loose			1.90	Strong
Rear Udder Height	Low			1.58	High
Rear Udder Width	Narrow			1.45	Wide
Udder Cleft	Weak			0.33	Strong
Udder Depth	Deep			1.92	Shallow
Front Teat Placement	Wide			0.11	Close
Rear Teat Placement	Wide			0.25	Close
Teat Length	Short			0.18	Long

RIVETING

14HO14220 S-S-I BG FRZZLD RIVETING-ET TR TP TC TY TV TL TD

FRAZZLED X PROFIT X RODGERS

NASIS: 80FFPD4 BETA CASEIN: A2A2 BPI: 306 OT: 102 MS: 106

HOLSTEIN \$200 SEXED



CDCB Genetic Eval. 08-19

0 dtrs. 0 herds			
NM\$			968
DWP\$			1152
PTAM			1320
PTA%F	PTAF	0.09	74
PTA%P	PTAP	0.05	54
Rel.			80
PL			8.8
SCS			2.41
DPR	FI	2.9	3.2
SCR			NA
SCE/Rel.			7.6/83
Gestation Length			-2.8



HEALTH+

COMPONENTS

A2/A2

DAM: S-S-I PROFIT 10668 11643-ET
1-11 3X 352D 13,884 KGM 3.3% 461 KGF 3.3% 460 KGP
MGD: S-S-I RDGRS 7950 10668-ET GP-83
3-08 3X 270D 11,077 KGM 4.4% 483 KGF 3.4% 376 KGP

PHYSICAL TRAIT EVALUATION

CDCB/HA Genetic Eval. 08-19
0 dtrs. 0 herds
78% Rel.

PTAT: 2.02 UDC: 2.70 FLC: 1.33 TPI: 2860

Stature	Short			0.90	Tall
Strength	Frail			0.22	Strong
Body Depth	Shallow			-0.16	Deep
Dairy Form	Tight Ribbed			0.59	Open Ribbed
Rump Width	Narrow			0.21	Wide
Rump Angle	High Pins			1.45	Sloped
Rear Leg (side view)	Posty			-0.70	Sickled
Rear Leg (rear view)	Hock-in			1.32	Straight
Foot Angle	Low Angle			0.98	Steep Angle
Feet & Leg Score	Low			1.45	High
Fore Udder	Loose			3.06	Strong
Rear Udder Height	Low			3.65	High
Rear Udder Width	Narrow			3.36	Wide
Udder Cleft	Weak			0.84	Strong
Udder Depth	Deep			2.53	Shallow
Front Teat Placement	Wide			1.56	Close
Rear Teat Placement	Wide			1.21	Close
Teat Length	Short			-1.90	Long

WHINO

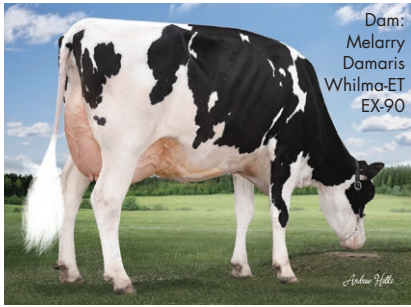
14HO14193 MELARRY FRAZZLED WHINO-ET

FRAZZLED X DAMARIS X SHAN

TR TP TC TY TV TL TD

NASIS: 80FFPF8 BETA CASEIN: A2A2 BPI: 278 OT: 99 MS: 104

HOLSTEIN \$36 RRP \$75 SEXED



Dam: Melarry Damaris Whilma-ET EX-90

CDCB Genetic Eval. 08-19

0 dtrs. 0 herds

NM\$	888
DWP\$	1251
PTAM	1428
PTA%F	PTAF 0.06 69
PTA%P	PTAP 0.03 51
Rel.	80
PL	9.3
SCS	2.49
DPR FI	1.2 1.7
SCR	2.0
SCE/Rel.	7.9/90
Gestation Length	-0.4



DAM: MELARRY DAMARIS WHILMA-ET EX-90
4-11 2X 365D 14,442 KGM 3.4% 492 KGF 3.2% 460 KGP

MGD: MELARRY SHAN WHINN-ET VG-85
2-05 2X 365D 13,662 KGM 4.0% 553 KGF 3.5% 477 KGP

PHYSICAL TRAIT EVALUATION

CDCB/HA Genetic Eval. 08-19
0 dtrs. 0 herds
78% Rel.

PTAT: 1.21	UDC: 1.71	FLC: 1.45	TPI: 2672
Stature	Short		-0.54
Strength	Frail		0.28
Body Depth	Shallow		-0.63
Dairy Form	Tight Ribbed		-0.83
Rump Width	Narrow		-0.41
Rump Angle	High Pins		-0.42
Rear Leg (side view)	Posty		-0.34
Rear Leg (rear view)	Hock-in		1.23
Foot Angle	Low Angle		1.09
Feet & Leg Score	Low		1.21
Fore Udder	Loose		1.81
Rear Udder Height	Low		1.87
Rear Udder Width	Narrow		1.72
Udder Cleft	Weak		0.92
Udder Depth	Deep		1.34
Front Teat Placement	Wide		0.80
Rear Teat Placement	Wide		0.92
Teat Length	Short		-1.25

TRILOGY

7HO14439 WELCOME TRILOGY 3553-ET

JAGUAR X DELTA X NUMERO UNO

TR TP TC TY TV TL TD

NASIS: 80FFPF6 BETA CASEIN: A2A2 BPI: 239 OT: 102 MS: 104

HOLSTEIN \$50 RRP



Dam: Welcome Delta Trinity-ET VG-85

CDCB Genetic Eval. 08-19

0 dtrs. 0 herds

NM\$	888
DWP\$	707
PTAM	1459
PTA%F	PTAF 0.19 108
PTA%P	PTAP 0.08 66
Rel.	78
PL	4.6
SCS	2.95
DPR FI	-0.1 0.4
SCR	0.9
SCE/Rel.	7.5/71
Gestation Length	0.3



DAM: WELCOME DELTA TRINITY-ET VG-85
2-11 3X 270D 9,276 KGM 4.7% 438 KGF 3.1% 291 KGP

MGD: MS WELCOME UNO TARINA-ET VG-86
2-01 3X 365D 15,041 KGM 4.3% 654 KGF 3.1% 473 KGP

PHYSICAL TRAIT EVALUATION

CDCB/HA Genetic Eval. 08-19
0 dtrs. 0 herds
76% Rel.

PTAT: 2.47	UDC: 2.12	FLC: 1.64	TPI: 2751
Stature	Short		2.03
Strength	Frail		1.14
Body Depth	Shallow		1.34
Dairy Form	Tight Ribbed		2.15
Rump Width	Narrow		1.46
Rump Angle	High Pins		0.15
Rear Leg (side view)	Posty		-0.57
Rear Leg (rear view)	Hock-in		1.59
Foot Angle	Low Angle		1.92
Feet & Leg Score	Low		1.98
Fore Udder	Loose		2.45
Rear Udder Height	Low		3.61
Rear Udder Width	Narrow		3.32
Udder Cleft	Weak		1.61
Udder Depth	Deep		1.42
Front Teat Placement	Wide		1.26
Rear Teat Placement	Wide		1.66
Teat Length	Short		-1.68

SOLUTION

14HO14085 FUSTEAD S-SI SOLUTION-ET

FRAZZLED X RUBICON X OAK

TR TP TC TY TV TL TD

NASIS: 80FFPBN BETA CASEIN: A2A2 BPI: 214 OT: 98 MS: 105

HOLSTEIN \$180 SEXED



Dam: Fustead Rubicon Lavon-ET VG-85

CDCB Genetic Eval. 08-19

0 dtrs. 0 herds

NM\$	1020
DWP\$	1278
PTAM	2025
PTA%F	PTAF 0.12 109
PTA%P	PTAP 0.02 67
Rel.	79
PL	7.2
SCS	2.59
DPR FI	-0.9 -0.2
SCR	NA
SCE/Rel.	7.1/88
Gestation Length	-0.6



DAM: FUSTEAD RUBICON LAVON-ET VG-85
2-05 3X 365D 16,629 KGM 4.9% 814 KGF 3.5% 574 KGP

MGD: FUSTEAD OAK LAFONDA-ET VG-86
2-03 3X 365D 18,842 KGM 3.5% 652 KGF 3.1% 592 KGP

PHYSICAL TRAIT EVALUATION

CDCB/HA Genetic Eval. 08-19
0 dtrs. 0 herds
78% Rel.

PTAT: 1.93	UDC: 1.96	FLC: 1.74	TPI: 2831
Stature	Short		0.69
Strength	Frail		0.18
Body Depth	Shallow		-0.16
Dairy Form	Tight Ribbed		0.87
Rump Width	Narrow		0.40
Rump Angle	High Pins		0.30
Rear Leg (side view)	Posty		0.30
Rear Leg (rear view)	Hock-in		1.65
Foot Angle	Low Angle		1.40
Feet & Leg Score	Low		1.78
Fore Udder	Loose		2.17
Rear Udder Height	Low		2.64
Rear Udder Width	Narrow		2.43
Udder Cleft	Weak		1.12
Udder Depth	Deep		1.48
Front Teat Placement	Wide		1.72
Rear Teat Placement	Wide		1.81
Teat Length	Short		-1.04

ZAMBONI

7HO12837 OCD JOSUPER ZAMBONI-ET

JOSUPER X MOGUL X SUPER

TR TP TC TY TV TL TD

NASIS: 80FFMH1 BETA CASEIN: A2A2 BPI: 240 OT: 103 MS: 105

HOLSTEIN \$38 RRP



S-SI la 11009 19503-ET VG-85

CDCB Genetic Eval. 08-19

32 dtrs. 17 herds

NM\$	813
DWP\$	858
PTAM	2082
PTA%F	PTAF 0.01 80
PTA%P	PTAP 0.01 67
Rel.	88
PL	5.1
SCS	2.74
DPR FI	0.0 0.3
SCR	1.6
SCE/Rel.	7.2/99
Gestation Length	-2.1



DAM: LANDIS-MRK MOGUL ZANETA-ET EX-90
3-03 3X 286D 15,513 KGM 3.1% 486 KGF 2.8% 441 KGP

MGD: LYNNCREST SUPER ZINNIA-ET EX-90
3-06 3X 343D 24,326 KGM 4.1% 995 KGF 2.7% 645 KGP

PHYSICAL TRAIT EVALUATION

CDCB/HA Genetic Eval. 08-19
11 dtrs. 7 herds
84% Rel.

PTAT: 2.46	UDC: 2.57	FLC: 1.26	TPI: 2689
Stature	Short		0.96
Strength	Frail		1.01
Body Depth	Shallow		0.74
Dairy Form	Tight Ribbed		1.18
Rump Width	Narrow		0.40
Rump Angle	High Pins		-0.72
Rear Leg (side view)	Posty		-1.05
Rear Leg (rear view)	Hock-in		1.21
Foot Angle	Low Angle		1.33
Feet & Leg Score	Low		1.36
Fore Udder	Loose		2.35
Rear Udder Height	Low		4.30
Rear Udder Width	Narrow		3.96
Udder Cleft	Weak		1.09
Udder Depth	Deep		1.13
Front Teat Placement	Wide		0.11
Rear Teat Placement	Wide		0.29
Teat Length	Short		0.39

RONALD*RC

250HO14465 TRENT-WAY-JS RONALD-ET_{RC TP TC TY TV TL TD}

SALVATORE RC X SILVER X NUMERO UNO

NASIS: 80FFPFE **BETA CASEIN:** A1A1 **BPI:** 249 **OT:** 103 **MS:** 106

HOLSTEIN \$40 RRP



CDCB Genetic Eval. 08-19

0 dtrs. 0 herds

NM\$	878
DWP\$	1028
PTAM	1341
PTA%F	PTAF 0.07 71
PTA%P	PTAP 0.04 53
Rel.	79
PL	7.6
SCS	2.66
DPR FI	1.5 1.4
SCR	-1.1
SCE/Rel.	6.2/69
Gestation Length	-2.6



DAM: Y-WHISPER SILVER ROYALTY-ET VG-87

5-08 2X 305D 16,261 KGM 4.2% 685 KGF 3.2% 518 KGP

MGD: MORNINGVIEW UNO REGINA-ET EX-90

2-04 2X 365D 14,946 KGM 3.7% 550 KGF 3.3% 500 KGP

PHYSICAL TRAIT EVALUATION

CDCB/HA Genetic Eval. 08-19

0 dtrs. 0 herds

76% Rel.

PTAT: 2.72 UDC: 2.88 FLC: 2.50 TPI: 2770

Stature	Short	2.18	Tall
Strength	Frail	1.07	Strong
Body Depth	Shallow	0.83	Deep
Dairy Form	Tight Ribbed	1.35	Open Ribbed
Rump Width	Narrow	1.20	Wide
Rump Angle	High Pins	0.31	Sloped
Rear Leg (side view)	Posty	-1.01	Sickled
Rear Leg (rear view)	Hock-in	2.92	Straight
Foot Angle	Low Angle	2.73	Steep Angle
Feet & Leg Score	Low	2.64	High
Fore Udder	Loose	3.56	Strong
Rear Udder Height	Low	4.27	High
Rear Udder Width	Narrow	3.93	Wide
Udder Cleft	Weak	0.58	Strong
Udder Depth	Deep	2.66	Shallow
Front Teat Placement	Wide	1.33	Close
Rear Teat Placement	Wide	0.48	Close
Teat Length	Short	-0.21	Long

REEVE-RED

14HO14464 MR STONE-FRONT REEVE-RED-ET

SALVATORE RC X SILVER X NUMERO UNO

TP TC TY TV TL TD

NASIS: 80FFPEZ **BETA CASEIN:** A1A2 **BPI:** 233 **OT:** 102 **MS:** 104

HOLSTEIN \$50 RRP \$100 SEXED



CDCB Genetic Eval. 08-19

0 dtrs. 0 herds

NM\$	727
DWP\$	835
PTAM	895
PTA%F	PTAF 0.15 75
PTA%P	PTAP 0.06 45
Rel.	79
PL	5.3
SCS	2.74
DPR FI	1.4 1.2
SCR	2.8
SCE/Rel.	7.3/69
Gestation Length	-2.8



DAM: Y-WHISPER SILVER REGA-ET VG-87

5-08 3X 305D 16,261 KGM 4.2% 685 KGF 3.2% 518 KGP

MGD: MORNINGVIEW UNO REGINA-ET EX-90

2-04 2X 365D 14,946 KGM 3.7% 550 KGF 3.3% 500 KGP

PHYSICAL TRAIT EVALUATION

CDCB/HA Genetic Eval. 08-19

0 dtrs. 0 herds

76% Rel.

PTAT: 2.39 UDC: 2.38 FLC: 1.61 TPI: 2603

Stature	Short	3.03	Tall
Strength	Frail	2.35	Strong
Body Depth	Shallow	1.72	Deep
Dairy Form	Tight Ribbed	0.63	Open Ribbed
Rump Width	Narrow	1.89	Wide
Rump Angle	High Pins	0.89	Sloped
Rear Leg (side view)	Posty	-0.63	Sickled
Rear Leg (rear view)	Hock-in	2.09	Straight
Foot Angle	Low Angle	2.67	Steep Angle
Feet & Leg Score	Low	1.98	High
Fore Udder	Loose	3.26	Strong
Rear Udder Height	Low	3.68	High
Rear Udder Width	Narrow	3.39	Wide
Udder Cleft	Weak	1.06	Strong
Udder Depth	Deep	2.42	Shallow
Front Teat Placement	Wide	1.52	Close
Rear Teat Placement	Wide	1.31	Close
Teat Length	Short	0.09	Long

CROWN-RED

7HO14460 KENMORE TRIPLE CROWN-RED-ET

APPRENTICE*RC X DELTA X MCCUTCHEEN

TP TC TY TV TL TD

NASIS: 80FFPEN **BETA CASEIN:** A1A2 **BPI:** 201 **OT:** 102 **MS:** 105

HOLSTEIN \$50 RRP



CDCB Genetic Eval. 08-19

0 dtrs. 0 herds

NM\$	781
DWP\$	902
PTAM	871
PTA%F	PTAF 0.16 77
PTA%P	PTAP 0.08 49
Rel.	79
PL	6.0
SCS	2.54
DPR FI	-0.3 0.3
SCR	-1.4
SCE/Rel.	7.4/62
Gestation Length	0.9



DAM: RI-VAL-RE LIL APPLE-ETS GP-84

2-02 2X 305D 11,269 KGM 3.9% 445 KGF 3.4% 383 KGP

MGD: MS APPLES MC VALENTINE-ET EX-90

4-10 2X 334D 13,426 KGM 4.8% 640 KGF 3.7% 500 KGP

PHYSICAL TRAIT EVALUATION

CDCB/HA Genetic Eval. 08-19

0 dtrs. 0 herds

77% Rel.

PTAT: 2.71 UDC: 2.55 FLC: 2.03 TPI: 2659

Stature	Short	1.47	Tall
Strength	Frail	1.10	Strong
Body Depth	Shallow	1.04	Deep
Dairy Form	Tight Ribbed	1.19	Open Ribbed
Rump Width	Narrow	1.13	Wide
Rump Angle	High Pins	-0.21	Sloped
Rear Leg (side view)	Posty	-0.48	Sickled
Rear Leg (rear view)	Hock-in	2.26	Straight
Foot Angle	Low Angle	2.56	Steep Angle
Feet & Leg Score	Low	2.05	High
Fore Udder	Loose	2.86	Strong
Rear Udder Height	Low	3.66	High
Rear Udder Width	Narrow	3.37	Wide
Udder Cleft	Weak	0.85	Strong
Udder Depth	Deep	2.35	Shallow
Front Teat Placement	Wide	0.83	Close
Rear Teat Placement	Wide	0.30	Close
Teat Length	Short	0.15	Long

RAGER-RED

7HO12344 RI-VAL-RE RAGER-RED-ET

RELIEF P X OBSERVER X ADVENT-RED

TP TC TY TV TL TD

NASIS: 80FFKC5 **BETA CASEIN:** A2A2 **BPI:** 160 **OT:** 108 **MS:** 104

HOLSTEIN \$34 RRP \$90 SEXED



IB/M-USA 08-19

1898 dtrs. 664 herds

NM\$	664
DWP\$	868
PTAM	1125
PTA%F	PTAF 0.08 65
PTA%P	PTAP 0.03 44
Rel.	99
PL	6.5
SCS	2.78
DPR FI	0.5 0.5
SCR	-0.3
SCE/Rel.	7.7/99
Gestation Length	-1.6



DAM: RI-VAL-RE OBSVR SALSA-ET VG-88

4-05 2X 297D 13,173 KGM 5.3% 700 KGF 3.1% 414 KGP

MGD: RI-VAL-RE ADV WIN-GO-RED-ET EX-90

4-00 2X 305D 13,490 KGM 4.0% 543 KGF 3.1% 412 KGP

PHYSICAL TRAIT EVALUATION

CDCB/HA Genetic Eval. 08-19

439 dtrs. 224 herds

97% Rel.

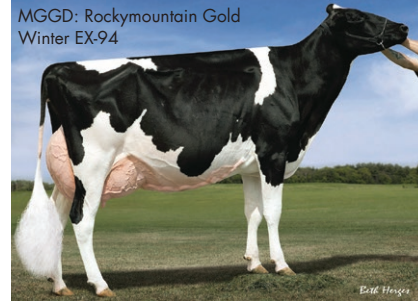
PTAT: 2.34 UDC: 1.41 FLC: 2.04 TPI: 2470

Stature	Short	1.38	Tall
Strength	Frail	1.48	Strong
Body Depth	Shallow	1.75	Deep
Dairy Form	Tight Ribbed	1.48	Open Ribbed
Rump Width	Narrow	1.61	Wide
Rump Angle	High Pins	1.12	Sloped
Rear Leg (side view)	Posty	0.79	Sickled
Rear Leg (rear view)	Hock-in	1.90	Straight
Foot Angle	Low Angle	1.57	Steep Angle
Feet & Leg Score	Low	2.27	High
Fore Udder	Loose	2.07	Strong
Rear Udder Height	Low	2.09	High
Rear Udder Width	Narrow	1.92	Wide
Udder Cleft	Weak	1.62	Strong
Udder Depth	Deep	0.85	Shallow
Front Teat Placement	Wide	1.35	Close
Rear Teat Placement	Wide	2.38	Close
Teat Length	Short	-0.91	Long

WARRIOR-RED

7HO14477 MR BLONDIN WARRIOR-RED-ET TP TC TY TV TL TD
AVALANCHE X DOORMAN X G W ATWOOD

NASIS: 80FFPF7 BETA CASEIN: A1A2 BPI: 184 OT: 107 MS: 111
HOLSTEIN \$50 RRP \$115 SEXED



CDCB Genetic Eval. 08-19				
0 dtrs. 0 herds				
NM\$		135		
DWP\$		266		
PTAM		366		
PTA%F	PTAF	0.02	18	
PTA%P	PTAP	0.01	15	
Rel.		79		
PL		-0.2		
SCS		2.79		
DPR FI		-1.6	-1.4	
SCR		-1.0		
SCE/Rel.		10.9/61		
Gestation Length		1.7		



DAM: TRIPLECROWN-JW DOOR WISP-ET
2-01 2X 310D 7,742 KGM 4.0% 312 KGF 3.5% 267 KGP
MGD: BUTLERVIEW ATW WHISKEY-ET VG-87
1-10 2X 352D 10,759 KGM 3.6% 391 KGF 2.9% 312 KGP

PHYSICAL TRAIT EVALUATION

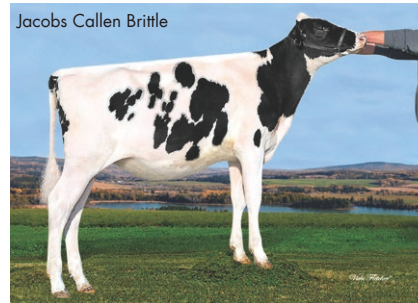
CDCB/HA Genetic Eval. 08-19
0 dtrs. 0 herds
77% Rel.

PTAT: 4.20	UDC: 3.03	FLC: 2.18	TPI: 2080	
Stature	Short			5.01 Tall
Strength	Frail			3.20 Strong
Body Depth	Shallow			3.31 Deep
Dairy Form	Tight Ribbed			2.63 Open Ribbed
Rump Width	Narrow			3.00 Wide
Rump Angle	High Pins			-0.14 Sloped
Rear Leg (side view)	Posty			0.18 Sickled
Rear Leg (rear view)	Hock-in			3.02 Straight
Foot Angle	Low Angle			3.42 Steep Angle
Feet & Leg Score	Low			2.92 High
Fore Udder	Loose			4.41 Strong
Rear Udder Height	Low			4.69 High
Rear Udder Width	Narrow			4.31 Wide
Udder Cleft	Weak			2.34 Strong
Udder Depth	Deep			3.84 Shallow
Front Teat Placement	Wide			1.63 Close
Rear Teat Placement	Wide			1.32 Close
Teat Length	Short			-0.48 Long

CalLEN

250HO12805 OCD 1STCLASS CALLEN-ET TR TP TY TV TL TD
1STCLASS X MAYFIELD X G W ATWOOD

NASIS: 80FFMAV BETA CASEIN: A1A2 BPI: 140 OT: 105 MS: 111
HOLSTEIN \$22 RRP \$60 SEXED



IB/M-USA 08-19				
246 dtrs. 164 herds				
NM\$		322		
DWP\$		324		
PTAM		153		
PTA%F	PTAF	0.07	24	
PTA%P	PTAP	-0.02	-1	
Rel.		92		
PL		3.4		
SCS		2.73		
DPR	FI	0.8	0.9	
SCR		-0.3		
SCE/Rel.		5.0/98		
Gestation Length		-0.4		



DAM: EDG CLAIREWOOD MAY 2081-ET EX-90
4-02 3X 365D 19,042 KGM 3.3% 626 KGF 3.0% 565 KGP
MGD: PINE-SHELTER CLAIRE WOOD-ET
2-05 2X 365D 14,692 KGM 4.2% 611 KGF 3.0% 442 KGP

PHYSICAL TRAIT EVALUATION

CDCB/HA Genetic Eval. 08-19
71 dtrs. 57 herds
85% Rel.

PTAT: 2.79	UDC: 2.91	FLC: 1.07	TPI: 2130	
Stature	Short			3.04 Tall
Strength	Frail			1.15 Strong
Body Depth	Shallow			1.59 Deep
Dairy Form	Tight Ribbed			1.58 Open Ribbed
Rump Width	Narrow			0.80 Wide
Rump Angle	High Pins			-0.09 Sloped
Rear Leg (side view)	Posty			-1.32 Sickled
Rear Leg (rear view)	Hock-in			0.90 Straight
Foot Angle	Low Angle			2.63 Steep Angle
Feet & Leg Score	Low			1.64 High
Fore Udder	Loose			3.75 Strong
Rear Udder Height	Low			3.44 High
Rear Udder Width	Narrow			3.16 Wide
Udder Cleft	Weak			2.78 Strong
Udder Depth	Deep			3.96 Shallow
Front Teat Placement	Wide			3.01 Close
Rear Teat Placement	Wide			3.00 Close
Teat Length	Short			0.40 Long

BEEMER

7HO12353 POL BUTTE MC BEEMER-ET TP TC TY TV TL TD
MCCUTCHEN X GOLDWYN X SHOTTLE

NASIS: 80FFK78 BETA CASEIN: A1A2 BPI: 29 OT: 105 MS: 111
HOLSTEIN \$26 RRP \$80 SEXED



IB/M-USA 08-19				
7246 dtrs. 2420 herds				
NM\$		55		
DWP\$		-41		
PTAM		441		
PTA%F	PTAF	0.02	23	
PTA%P	PTAP	-0.01	12	
Rel.		99		
PL		-1.6		
SCS		3.12		
DPR	FI	-4.3	-4.2	
SCR		1.0		
SCE/Rel.		7.2/99		
Gestation Length		-3.7		



DAM: BUTZ-BUTLER GOLD BANNER-ET
2-06 2X 365D 15,158 KGM 4.2% 639 KGF 3.1% 476 KGP
MGD: REGANCREST BRASILIA-ET EX-92
2-03 3X 365D 15,050 KGM 3.6% 538 KGF 2.8% 420 KGP

PHYSICAL TRAIT EVALUATION

CDCB/HA Genetic Eval. 08-19
3433 dtrs. 1405 herds
99% Rel.

PTAT: 3.22	UDC: 2.27	FLC: 1.81	TPI: 1817	
Stature	Short			3.57 Tall
Strength	Frail			1.92 Strong
Body Depth	Shallow			2.51 Deep
Dairy Form	Tight Ribbed			2.63 Open Ribbed
Rump Width	Narrow			1.16 Wide
Rump Angle	High Pins			-0.77 Sloped
Rear Leg (side view)	Posty			-0.46 Sickled
Rear Leg (rear view)	Hock-in			2.91 Straight
Foot Angle	Low Angle			2.17 Steep Angle
Feet & Leg Score	Low			2.22 High
Fore Udder	Loose			3.15 Strong
Rear Udder Height	Low			3.40 High
Rear Udder Width	Narrow			3.13 Wide
Udder Cleft	Weak			2.67 Strong
Udder Depth	Deep			3.31 Shallow
Front Teat Placement	Wide			1.37 Close
Rear Teat Placement	Wide			1.50 Close
Teat Length	Short			-2.50 Long

CORVETTE

7HO12042 SONNEK GC CORVETTE-ET TR TP TY TV TL TD
GOLD CHIP X DAMION X SHOTTLE

NASIS: 80FFJ94 BETA CASEIN: A2A2 BPI: 195 OT: 113 MS: 109
HOLSTEIN \$18 RRP



IB/M-USA 08-19				
4258 dtrs. 1088 herds				
NM\$		111		
DWP\$		102		
PTAM		229		
PTA%F	PTAF	0.04	19	
PTA%P	PTAP	0.03	15	
Rel.		99		
PL		-1.4		
SCS		2.78		
DPR	FI	-1.7	-2.0	
SCR		-0.3		
SCE/Rel.		6.4/99		
Gestation Length		0.9		



DAM: SONNEK DAMION CHARLIE-ET EX-94
10-01 2X 365D 14,959 KGM 3.6% 535 KGF 3.3% 499 KGP
MGD: SONNEK SHOTTLE ARCADIA VG-87
2-02 2X 364D 12,660 KGM 3.9% 497 KGF 3.2% 400 KGP

PHYSICAL TRAIT EVALUATION

CDCB/HA Genetic Eval. 08-19
1749 dtrs. 596 herds
99% Rel.

PTAT: 2.86	UDC: 1.95	FLC: 2.49	TPI: 1963	
Stature	Short			3.02 Tall
Strength	Frail			2.65 Strong
Body Depth	Shallow			2.40 Deep
Dairy Form	Tight Ribbed			1.04 Open Ribbed
Rump Width	Narrow			3.17 Wide
Rump Angle	High Pins			0.79 Sloped
Rear Leg (side view)	Posty			-1.64 Sickled
Rear Leg (rear view)	Hock-in			3.76 Straight
Foot Angle	Low Angle			3.78 Steep Angle
Feet & Leg Score	Low			2.49 High
Fore Udder	Loose			3.08 Strong
Rear Udder Height	Low			3.00 High
Rear Udder Width	Narrow			2.76 Wide
Udder Cleft	Weak			1.73 Strong
Udder Depth	Deep			2.52 Shallow
Front Teat Placement	Wide			0.52 Close
Rear Teat Placement	Wide			0.26 Close
Teat Length	Short			1.25 Long

HANCOCK

250HO14579 SIEMERS DOC HANCOCK^{TR TP TC TY TV TL TD}

DOC X MONTEREY X MOGUL

NASIS: 80FFPEV BETA CASEIN: A2A2 BPI: 202 OT: 102 MS: 107

HOLSTEIN \$40 RRP



CDCB Genetic Eval. 08-19

0 dtrs. 0 herds

NM\$	642
DWP\$	803
PTAM	1484
PTA%F	PTAF 0.06 72
PTA%P	PTAP 0.03 53
Rel.	77
PL	2.5
SCS	2.89
DPR FI	-0.7 -0.1
SCR	0.8
SCE/Rel.	6.8/63
Gestation Length	-1



DAM: SIEMERS MONTEREY HANAN-ET VG-85

2-01 2X 305D 11,589 KGM 4.1% 503 KGF 3.2% 383 KGP

MGD: COOKIECUTTER MOG HANKER-ET EX-94

4-01 2X 365D 21,228 KGM 4.2% 894 KGF 3.4% 722 KGP

PHYSICAL TRAIT EVALUATION

CDCB/HA Genetic Eval. 08-19

0 dtrs. 0 herds

76% Rel.

PTAT: 4.06 UDC: 3.50 FLC: 1.79 TPI: 2608

Stature	Short			3.08	Tall
Strength	Frail			0.97	Strong
Body Depth	Shallow			1.95	Deep
Dairy Form	Tight Ribbed			4.00	Open Ribbed
Rump Width	Narrow			3.02	Wide
Rump Angle	High Pins			-1.72	Sloped
Rear Leg (side view)	Posty			1.02	Sickled
Rear Leg (rear view)	Hock-in			1.96	Straight
Foot Angle	Low Angle			2.05	Steep Angle
Feet & Leg Score	Low			2.35	High
Fore Udder	Loose			3.45	Strong
Rear Udder Height	Low			5.50	High
Rear Udder Width	Narrow			5.06	Wide
Udder Cleft	Weak			3.41	Strong
Udder Depth	Deep			2.36	Shallow
Front Teat Placement	Wide			2.73	Close
Rear Teat Placement	Wide			2.99	Close
Teat Length	Short			0.21	Long

DOC

250HO12961 WOODCREST KING DOC^{TR TP TC TY TV TL TD}

KINGBOY X MACK X SNOWMAN

NASIS: 80FFMDK BETA CASEIN: A1A2 BPI: 169 OT: 105 MS: 105

HOLSTEIN \$34 RRP \$80 SEXED



CDCB Genetic Eval. 08-19

0 dtrs. 0 herds

NM\$	620
DWP\$	597
PTAM	1565
PTA%F	PTAF 0.04 71
PTA%P	PTAP 0.02 53
Rel.	80
PL	2.3
SCS	2.91
DPR FI	0.3 0.6
SCR	0.4
SCE/Rel.	8.3/99
Gestation Length	-0.9



DAM: WCD-ZBW MACK DADDY-ET VG-88

1-11 3X 365D 16,969 KGM 3.1% 523 KGF 3.2% 539 KGP

MGD: MS HOVDEN DOLLY-RAE-ET EX-91

2-03 3X 343D 14,370 KGM 3.3% 469 KGF 3.3% 467 KGP

PHYSICAL TRAIT EVALUATION

CDCB/HA Genetic Eval. 08-19

0 dtrs. 0 herds

79% Rel.

PTAT: 3.93 UDC: 2.83 FLC: 2.15 TPI: 2600

Stature	Short			3.52	Tall
Strength	Frail			2.19	Strong
Body Depth	Shallow			2.66	Deep
Dairy Form	Tight Ribbed			3.50	Open Ribbed
Rump Width	Narrow			2.98	Wide
Rump Angle	High Pins			-0.23	Sloped
Rear Leg (side view)	Posty			0.11	Sickled
Rear Leg (rear view)	Hock-in			2.71	Straight
Foot Angle	Low Angle			2.56	Steep Angle
Feet & Leg Score	Low			2.65	High
Fore Udder	Loose			3.27	Strong
Rear Udder Height	Low			4.78	High
Rear Udder Width	Narrow			4.40	Wide
Udder Cleft	Weak			2.52	Strong
Udder Depth	Deep			1.99	Shallow
Front Teat Placement	Wide			2.00	Close
Rear Teat Placement	Wide			2.01	Close
Teat Length	Short			0.17	Long

JACOBY

250HO12589 CYCLE DOORMAN JACOBY-ET^{TR TP TC TY TV TL TD}

DOORMAN X GOLD CHIP X LION KING

NASIS: 80FFLA1 BETA CASEIN: A2A2 BPI: 117 OT: 117 MS: 116

HOLSTEIN \$26 RRP \$75 SEXED



IB/M-USA 08-19

1039 dtrs. 565 herds

NM\$	65
DWP\$	-34
PTAM	-289
PTA%F	PTAF 0.09 13
PTA%P	PTAP 0.00 -9
Rel.	96
PL	0.9
SCS	2.58
DPR FI	-3.2 -2.9
SCR	-0.4
SCE/Rel.	9.1/98
Gestation Length	0



DAM: BRYERSQUART GCHIP JAIL-P-ET EX-90

1-11 3X 341D 14,324 KGM 3.9% 559 KGF 2.9% 420 KGP

MGD: BRYERSQUART KING JAMIE-RED GP-83

2-01 2X 108D 4,005 KGM 4.0% 159 KGF 2.8% 112 KGP

PHYSICAL TRAIT EVALUATION

CDCB/HA Genetic Eval. 08-19

641 dtrs. 373 herds

95% Rel.

PTAT: 3.94 UDC: 3.55 FLC: 2.16 TPI: 1928

Stature	Short			3.84	Tall
Strength	Frail			2.60	Strong
Body Depth	Shallow			2.71	Deep
Dairy Form	Tight Ribbed			2.45	Open Ribbed
Rump Width	Narrow			3.57	Wide
Rump Angle	High Pins			0.80	Sloped
Rear Leg (side view)	Posty			0.35	Sickled
Rear Leg (rear view)	Hock-in			2.90	Straight
Foot Angle	Low Angle			2.74	Steep Angle
Feet & Leg Score	Low			2.68	High
Fore Udder	Loose			5.15	Strong
Rear Udder Height	Low			4.59	High
Rear Udder Width	Narrow			4.22	Wide
Udder Cleft	Weak			2.43	Strong
Udder Depth	Deep			4.29	Shallow
Front Teat Placement	Wide			2.96	Close
Rear Teat Placement	Wide			3.13	Close
Teat Length	Short			-0.61	Long

DIAMONDBACK*RC

7HO12587 MR D APPLE DIAMONDBACK^{RC TP TY TV TL TD}

DOORMAN X TALENT X REGIMENT-RED

NASIS: 80FFL87 BETA CASEIN: A1A2 BPI: 107 OT: 108 MS: 112

HOLSTEIN \$28 RRP \$70 SEXED



IB/M-USA 08-19

3052 dtrs. 1210 herds

NM\$	153
DWP\$	191
PTAM	176
PTA%F	PTAF -0.01 5
PTA%P	PTAP 0.05 19
Rel.	99
PL	1.1
SCS	2.89
DPR FI	-2.3 -1.9
SCR	1.2
SCE/Rel.	9.9/99
Gestation Length	2



DAM: MS DELICIOUS APPLE-RED-ET EX-94

7-02 2X 365D 21,097 KGM 4.0% 836 KGF 3.1% 646 KGP

MGD: KHW REGIMENT APPLE-RED-ET EX-96

9-01 2X 365D 16,670 KGM 4.3% 718 KGF 3.3% 549 KGP

PHYSICAL TRAIT EVALUATION

CDCB/HA Genetic Eval. 08-19

1142 dtrs. 548 herds

98% Rel.

PTAT: 3.23 UDC: 2.99 FLC: 1.90 TPI: 2021

Stature	Short			2.39	Tall
Strength	Frail			2.10	Strong
Body Depth	Shallow			2.39	Deep
Dairy Form	Tight Ribbed			2.18	Open Ribbed
Rump Width	Narrow			2.76	Wide
Rump Angle	High Pins			-0.24	Sloped
Rear Leg (side view)	Posty			-0.66	Sickled
Rear Leg (rear view)	Hock-in			2.84	Straight
Foot Angle	Low Angle			2.86	Steep Angle
Feet & Leg Score	Low			1.93	High
Fore Udder	Loose			3.68	Strong
Rear Udder Height	Low			4.98	High
Rear Udder Width	Narrow			4.58	Wide
Udder Cleft	Weak			0.91	Strong
Udder Depth	Deep			1.69	Shallow
Front Teat Placement	Wide			1.43	Close
Rear Teat Placement	Wide			1.07	Close
Teat Length	Short			0.66	Long

KING ROYAL

7HO12787 PLAIN-KNOLL KING ROYAL-ET^{TR TP TC TY TV TL TD}

KINGBOY X MOGUL X SOCRATES

NASIS: 80FFMDP **BETA CASEIN:** A2A2 **BPI:** 222 **OT:** 107 **MS:** 109

HOLSTEIN \$40 RRP \$100 SEXED

Plain-Knoll King Royal 1692



CDCB Genetic Eval. 08-19

96 dtrs. 38 herds

NM\$	658
DWP\$	599
PTAM	983
PTA%F	PTAF 0.14 75
PTA%P	PTAP 0.07 50
Rel.	93
PL	2.7
SCS	2.92
DPR FI	-0.5 0.3
SCR	1.4
SCE/Rel.	9.2/99
Gestation Length	-1.4



FERTILITYMAXX
COMPONENTS



DAM: PLAIN-KNOLL MOGUL MARIAH VG-88

2-01 3X 365D 16,780 KGM 3.2% 557 KGF 3.2% 552 KGP

MGD: ROYLANE SOCRA MIRA 1760-ET EX-91

5-11 3X 305D 18,180 KGM 3.5% 640 KGF 3.1% 568 KGP

PHYSICAL TRAIT EVALUATION

CDCB/HA Genetic Eval. 08-19
26 dtrs. 14 herds
88% Rel.

PTAT: 3.14 UDC: 2.95 FLC: 1.90 TPI: 2581

Stature	Short			2.62	Tall
Strength	Frail			1.29	Strong
Body Depth	Shallow			1.74	Deep
Dairy Form	Tight Ribbed			2.75	Open Ribbed
Rump Width	Narrow			2.68	Wide
Rump Angle	High Pins			-0.96	Sloped
Rear Leg (side view)	Posty			-0.64	Sickled
Rear Leg (rear view)	Hock-in			1.95	Straight
Foot Angle	Low Angle			2.52	Steep Angle
Feet & Leg Score	Low			2.30	High
Fore Udder	Loose			3.27	Strong
Rear Udder Height	Low			4.80	High
Rear Udder Width	Narrow			4.42	Wide
Udder Cleft	Weak			2.08	Strong
Udder Depth	Deep			2.06	Shallow
Front Teat Placement	Wide			1.99	Close
Rear Teat Placement	Wide			1.99	Close
Teat Length	Short			-1.29	Long

KINGPIN

7HO12228 KERNDTWAY KINGPIN-ET^{TR TP TC TY TV TL TD}

MCCUTCHEN X OBSERVER X SHOTTLE

NASIS: 80FFK77 **BETA CASEIN:** A1A2 **BPI:** 157 **OT:** 106 **MS:** 105

HOLSTEIN \$24 RRP \$65 SEXED

Jenny-Lou Kingpin 3968 VG-87



IB/M-USA 08-19

5361 dtrs. 2155 herds

NM\$	392
DWP\$	488
PTAM	636
PTA%F	PTAF 0.10 50
PTA%P	PTAP 0.03 29
Rel.	99
PL	1.1
SCS	2.66
DPR FI	0.6 0.5
SCR	0.0
SCE/Rel.	7.8/99
Gestation Length	-1.7



DAM: GOLDEN-OAKS OBSVR DIXIE-ET EX-90

2-00 2X 365D 12,832 KGM 3.9% 500 KGF 3.1% 401 KGP

MGD: REGANCREST S DASHE-ET VG-88

2-01 3X 305D 11,952 KGM 3.7% 446 KGF 3.1% 366 KGP

PHYSICAL TRAIT EVALUATION

CDCB/HA Genetic Eval. 08-19
3117 dtrs. 1456 herds
98% Rel.

PTAT: 2.75 UDC: 2.01 FLC: 1.06 TPI: 2286

Stature	Short			3.91	Tall
Strength	Frail			2.05	Strong
Body Depth	Shallow			2.05	Deep
Dairy Form	Tight Ribbed			1.09	Open Ribbed
Rump Width	Narrow			1.25	Wide
Rump Angle	High Pins			1.61	Sloped
Rear Leg (side view)	Posty			-0.16	Sickled
Rear Leg (rear view)	Hock-in			1.82	Straight
Foot Angle	Low Angle			2.04	Steep Angle
Feet & Leg Score	Low			1.67	High
Fore Udder	Loose			3.04	Strong
Rear Udder Height	Low			3.12	High
Rear Udder Width	Narrow			2.87	Wide
Udder Cleft	Weak			1.73	Strong
Udder Depth	Deep			3.55	Shallow
Front Teat Placement	Wide			0.53	Close
Rear Teat Placement	Wide			-0.04	Close
Teat Length	Short			1.40	Long

KINGBOY

7HO12198 MORNINGVIEW MCC KINGBOY-ET^{TR TP TC TY TV TL TD}

MCCUTCHEN X SUPER X SHOTTLE

NASIS: 80FFEJA3 **BETA CASEIN:** A2A2 **BPI:** 162 **OT:** 104 **MS:** 107

HOLSTEIN \$45 RRP \$80 SEXED

Kings-Ransom Kb Delicate-ET EX-93



IB/M-USA 08-19

14768 dtrs. 3214 herds

NM\$	451
DWP\$	398
PTAM	1256
PTA%F	PTAF 0.00 46
PTA%P	PTAP 0.00 39
Rel.	99
PL	1.3
SCS	2.70
DPR FI	0.4 0.7
SCR	0.0
SCE/Rel.	8.2/99
Gestation Length	-0.6



DAM: MORNINGVIEW SUPER MEGAN-ET EX-91

4-02 2X 365D 17,109 KGM 3.7% 637 KGF 2.9% 496 KGP

MGD: MORNINGVIEW SHTE MADILYN EX-94

6-10 2X 365D 21,128 KGM 3.8% 797 KGF 2.9% 614 KGP

PHYSICAL TRAIT EVALUATION

CDCB/HA Genetic Eval. 08-19
6202 dtrs. 1982 herds
99% Rel.

PTAT: 2.94 UDC: 2.46 FLC: 1.10 TPI: 2371

Stature	Short			2.84	Tall
Strength	Frail			2.00	Strong
Body Depth	Shallow			2.02	Deep
Dairy Form	Tight Ribbed			1.88	Open Ribbed
Rump Width	Narrow			2.80	Wide
Rump Angle	High Pins			-0.86	Sloped
Rear Leg (side view)	Posty			-0.16	Sickled
Rear Leg (rear view)	Hock-in			1.14	Straight
Foot Angle	Low Angle			2.40	Steep Angle
Feet & Leg Score	Low			1.57	High
Fore Udder	Loose			3.02	Strong
Rear Udder Height	Low			4.02	High
Rear Udder Width	Narrow			3.70	Wide
Udder Cleft	Weak			1.83	Strong
Udder Depth	Deep			1.92	Shallow
Front Teat Placement	Wide			1.20	Close
Rear Teat Placement	Wide			0.97	Close
Teat Length	Short			0.52	Long

LIGHT MY FIRE

250HO12879 MAPEL WOOD LIGHT MY FIRE

1STCLASS X MCCUTCHEN X SNOWMAN

NASIS: 70FFM81 **BETA CASEIN:** A1A2 **BPI:** 272 **OT:** 107 **MS:** 110

HOLSTEIN \$18 RRP

Vogue LMF Endless Love VG-86



IB/M-USA 08-19

268 dtrs. 184 herds

NM\$	476
DWP\$	413
PTAM	737
PTA%F	PTAF 0.06 45
PTA%P	PTAP 0.05 35
Rel.	90
PL	2.2
SCS	2.76
DPR FI	-0.3 -0.3
SCR	0.0
SCE/Rel.	8.4/97
Gestation Length	-1.9



COMPONENTS

DAM: SNOWBIZ MCCUTCHEN LOTTIE

2-02 2X 365D 16,669 KGM 4.2% 697 KGF 3.1% 515 KGP

MGD: FREUREHAVEN FGS LUCY-ET

2-01 2X 354D 35,919 KGM 4.2% 1,499 KGF 2.9% 1,038 KGP

PHYSICAL TRAIT EVALUATION

CDCB/HA Genetic Eval. 08-19
86 dtrs. 65 herds
85% Rel.

PTAT: 2.73 UDC: 3.11 FLC: 0.76 TPI: 2335

Stature	Short			2.77	Tall
Strength	Frail			0.20	Strong
Body Depth	Shallow			0.79	Deep
Dairy Form	Tight Ribbed			1.61	Open Ribbed
Rump Width	Narrow			0.64	Wide
Rump Angle	High Pins			1.41	Sloped
Rear Leg (side view)	Posty			-1.21	Sickled
Rear Leg (rear view)	Hock-in			1.01	Straight
Foot Angle	Low Angle			2.00	Steep Angle
Feet & Leg Score	Low			1.20	High
Fore Udder	Loose			3.64	Strong
Rear Udder Height	Low			4.16	High
Rear Udder Width	Narrow			3.83	Wide
Udder Cleft	Weak			2.43	Strong
Udder Depth	Deep			3.74	Shallow
Front Teat Placement	Wide			1.84	Close
Rear Teat Placement	Wide			1.84	Close
Teat Length	Short			-1.09	Long

SUBBAN

250HO14503 AVANT-GARDE SUBBAN-ET^{TR TP TC TY TV TL TD}

CRUSH X MCCUTCHEN X LAVANGUARD

NASIS: 80FFPF4 BETA CASEIN: A1A2 BPI: 164 OT: 101 MS: 108

HOLSTEIN \$34 RRP



CDCB Genetic Eval. 08-19

0 dtrs. 0 herds

NM\$	295		
DWP\$	366		
PTAM	85		
PTA%F	PTAF	0.05	16
PTA%P	PTAP	0.01	5
Rel.	80		
PL	3.4		
SCS	2.52		
DPR	FI	0.2	0.5
SCR	NA		
SCE/Rel.	7.0/63		
Gestation Length	-0.2		



DAM: WALNUTLAWN MCCUTCHEN SUMMER-ET EX-94
1-10 2X 365D 12,248 KGM 4.6% 1,237 KGF 3.1% 380 KGP

MGD: MISTY SPRINGS LAVANGUARD SUE
4-03 2X 365D 30,123 KGM 4.6% 1,380 KGF 3.0% 910 KGP

PHYSICAL TRAIT EVALUATION

CDCB/HA Genetic Eval. 08-19
0 dtrs. 0 herds
79% Rel.

PTAT: 3.59 UDC: 3.09 FLC: 2.07 TPI: 2204

Stature	Short			3.52	Tall
Strength	Frail			1.89	Strong
Body Depth	Shallow			2.09	Deep
Dairy Form	Tight Ribbed			2.01	Open Ribbed
Rump Width	Narrow			2.62	Wide
Rump Angle	High Pins			-0.67	Sloped
Rear Leg (side view)	Posty			1.14	Sickled
Rear Leg (rear view)	Hock-in			2.58	Straight
Foot Angle	Low Angle			2.39	Steep Angle
Feet & Leg Score	Low			2.61	High
Fore Udder	Loose			4.57	Strong
Rear Udder Height	Low			3.73	High
Rear Udder Width	Narrow			3.43	Wide
Udder Cleft	Weak			2.36	Strong
Udder Depth	Deep			4.25	Shallow
Front Teat Placement	Wide			1.72	Close
Rear Teat Placement	Wide			1.26	Close
Teat Length	Short			0.03	Long

SEABISCUIT

250HO14140 OCD RAMBO SEABISCUIT-ET^{TR TP TC TY TV TL TD}

RAMBO X SILVER X SHIMONE

NASIS: 80FFPD1 BETA CASEIN: A2A2 BPI: 262 OT: 103 MS: 106

HOLSTEIN \$28 RRP \$80 SEXED



CDCB Genetic Eval. 08-19

0 dtrs. 0 herds

NM\$	736		
DWP\$	784		
PTAM	475		
PTA°F	PTAF	0.25	85
PTA°P	PTAP	0.09	40
Rel.	80		
PL	5.2		
SCS	2.66		
DPR	FI	0.7	0.6
SCR	NA		
SCE/Rel.	7.8/75		
Gestation Length	-2.5		



DAM: OCD SILVER SOPRANO 33394-ET VG-85
5-01 3X 304D 15,531 KGM 4.3% 575 KGF 3.0% 470 KGP

MGD: OCD SHIM CARMELA SOPRANO-ET VG-85
3-02 3X 326D 15,454 KGM 4.0% 621 KGF 3.1% 479 KGP

PHYSICAL TRAIT EVALUATION

CDCB/HA Genetic Eval. 08-19
0 dtrs. 0 herds
79% Rel.

PTAT: 3.24 UDC: 2.39 FLC: 1.86 TPI: 2636

Stature	Short			3.84	Tall
Strength	Frail			2.11	Strong
Body Depth	Shallow			2.06	Deep
Dairy Form	Tight Ribbed			2.08	Open Ribbed
Rump Width	Narrow			2.22	Wide
Rump Angle	High Pins			1.33	Sloped
Rear Leg (side view)	Posty			-0.44	Sickled
Rear Leg (rear view)	Hock-in			2.33	Straight
Foot Angle	Low Angle			2.41	Steep Angle
Feet & Leg Score	Low			2.50	High
Fore Udder	Loose			2.66	Strong
Rear Udder Height	Low			4.10	High
Rear Udder Width	Narrow			3.77	Wide
Udder Cleft	Weak			2.57	Strong
Udder Depth	Deep			2.54	Shallow
Front Teat Placement	Wide			2.04	Close
Rear Teat Placement	Wide			2.35	Close
Teat Length	Short			-1.14	Long

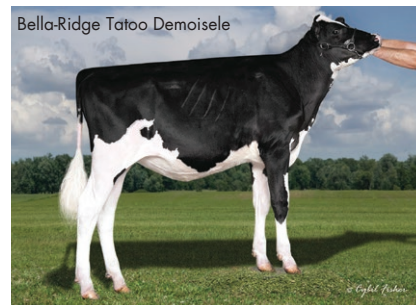
TATOO

7HO13839 DUCKETT CRUSH TATOO-ET^{TR TP TC TY TV TL TD}

CRUSH X GOLD CHIP X DURHAM

NASIS: 80FFNCU BETA CASEIN: A1A2 BPI: 182 OT: 104 MS: 110

HOLSTEIN \$34 RRP \$80 SEXED



CDCB Genetic Eval. 08-19

0 dtrs. 0 herds

NM\$	242		
DWP\$	429		
PTAM	-92		
PTA°F	PTAF	-0.02	-10
PTA°P	PTAP	0.04	7
Rel.	80		
PL	4.1		
SCS	2.47		
DPR	FI	-1.0	-0.4
SCR	-1.2		
SCE/Rel.	7.0/96		
Gestation Length	1.4		



DAM: DUCKETT G CHIP TOKYO-ET EX-93
3-09 2X 365D 14,937 KGM 3.9% 579 KGF 3.3% 488 KGP

MGD: VANGO H DURHAM TREASURE EX-96
9-04 2X 365D 18,507 KGM 3.9% 719 KGF 3.1% 568 KGP

PHYSICAL TRAIT EVALUATION

CDCB/HA Genetic Eval. 08-19
0 dtrs. 0 herds
80% Rel.

PTAT: 3.69 UDC: 3.39 FLC: 1.66 TPI: 2124

Stature	Short			2.72	Tall
Strength	Frail			1.02	Strong
Body Depth	Shallow			1.72	Deep
Dairy Form	Tight Ribbed			2.76	Open Ribbed
Rump Width	Narrow			3.22	Wide
Rump Angle	High Pins			0.48	Sloped
Rear Leg (side view)	Posty			1.92	Sickled
Rear Leg (rear view)	Hock-in			1.64	Straight
Foot Angle	Low Angle			1.62	Steep Angle
Feet & Leg Score	Low			2.23	High
Fore Udder	Loose			4.28	Strong
Rear Udder Height	Low			4.43	High
Rear Udder Width	Narrow			4.08	Wide
Udder Cleft	Weak			2.80	Strong
Udder Depth	Deep			3.58	Shallow
Front Teat Placement	Wide			1.70	Close
Rear Teat Placement	Wide			1.93	Close
Teat Length	Short			-0.63	Long

UNDENIED

7HO13730 OUR-FAVORITE UNDENIED-ET^{TR TP TC TY TV TL TD}

SOLOMON X G W ATWOOD X SHOTTLE

NASIS: 80FFNB9 BETA CASEIN: A2A2 BPI: 102 OT: 107 MS: 110

HOLSTEIN \$36 RRP \$85 SEXED



CDCB Genetic Eval. 08-19

0 dtrs. 0 herds

NM\$	214		
DWP\$	216		
PTAM	261		
PTA%F	PTAF	0.10	38
PTA%P	PTAP	0.01	12
Rel.	81		
PL	0.3		
SCS	2.90		
DPR	FI	-1.3	-0.8
SCR	-3.4		
SCE/Rel.	8.3/96		
Gestation Length	1.7		



DAM: OUR-FAVORITE UNLIMITED EX-94
5-03 2X 365D 15,259 KGM 4.3% 652 KGF 3.5% 536 KGP

MGD: OUR-FAVORITE OBVIOUS-ET EX-93
3-06 3X 365D 17,844 KGM 4.0% 715 KGF 3.2% 576 KGP

PHYSICAL TRAIT EVALUATION

CDCB/HA Genetic Eval. 08-19
0 dtrs. 0 herds
81% Rel.

PTAT: 4.16 UDC: 2.03 FLC: 2.07 TPI: 2115

Stature	Short			4.49	Tall
Strength	Frail			3.31	Strong
Body Depth	Shallow			4.01	Deep
Dairy Form	Tight Ribbed			3.74	Open Ribbed
Rump Width	Narrow			3.35	Wide
Rump Angle	High Pins			0.23	Sloped
Rear Leg (side view)	Posty			0.19	Sickled
Rear Leg (rear view)	Hock-in			2.99	Straight
Foot Angle	Low Angle			3.33	Steep Angle
Feet & Leg Score	Low			2.64	High
Fore Udder	Loose			3.85	Strong
Rear Udder Height	Low			3.48	High
Rear Udder Width	Narrow			3.20	Wide
Udder Cleft	Weak			2.05	Strong
Udder Depth	Deep			2.17	Shallow
Front Teat Placement	Wide			1.57	Close
Rear Teat Placement	Wide			1.47	Close
Teat Length	Short			0.93	Long



CowManager®



Maximize profit by monitoring your cows' fertility, health, nutrition and location with impressive accuracy.

Why CowManager?



- ✔ Keep an eye on your herd 24/7, using your laptop, tablet or smartphone
- ✔ Measures ear temperature, activity, rumination, eating and resting time
- ✔ The most accurate and complete product on the market
- ✔ Save labor and ensure a sustainable herd
- ✔ User-friendly technology with a plug-and-play installation
- ✔ Fantastic 24/7 support at your disposal
- ✔ Regular updates bring you the latest developments

Accuracy. No less.

More information at www.cowmanager.com. CowManager is available at



BOViFLAGTM

To breed or not to breed! The BOViFLAGTM heat detection aid helps to identify estrus in cows. When a cow has been mounted, the silver scratch-off ink is rubbed off by the mounting and will reveal the bright colour underneath. BOViFLAGTM is available in the colours red, yellow, blue, pink and green.



BENEFITS OF USING BOViFLAGs

- ✓ EFFORTLESS APPLICATION OF SELF-ADHESIVE PATCH
- ✓ EASY TO INTERPRET
- ✓ VARIOUS COLOURS CAN BE USED FOR SUCCESSFUL AI PROGRAMS



PO Box 7538 • Shepparton • 3632 Victoria • Phone (03) 5831 5559 • Fax (03) 5822 0005
info@wwsaustralia.com • www.wwsires.com