



The World's Local **GENETICS**

*Genetics standing in Australia
distributed throughout the world...*

AUGUST 2019
SIRE UPDATE





Welcome to the Total Livestock Genetics Spring 2019 Update.

We are observing some excellent developments in the genetic offerings from TLG, and this update presents genetic diversity which supports easy to make sire decisions to assist in the genetic development of your herd.

A broad range of sires, offering highly appraised genetic merit on both the Australian and US genetic analysis systems, is a key attribute of the genetics that we present for consideration.

Our "Can Do" attitude in developing and implementing cost effective options in dairy herd reproductive and genetic development strategies adds an additional perspective to the line-up of bulls that are standing here in Australia, are readily available, and are priced commercially to optimise your genetic purchase decision.

Through the incorporation of fresh sexed semen to optimise synchronisation program fertility, through to offering a flexible range of comprehensive and essential genomic tests through our relationship with the Neogen suite of genomic and A2 products, there is a broad platform of opportunity for herd genetic development available from TLG at attractive commercial prices.

Please explore our Spring 2019 update to help you make an informed choice about the genetic development opportunities for your herd. Additionally, please inquire about the developments of commercially attractive fresh sexed semen programs, or the different genomic tests that are available through your relationship with TLG.

Contact TLG today to discuss your herd genetic development options.

Symbols for your reference in this catalogue...



A2/A2 Milk



Calving Ease



High Components



High Daughter Fertility



High Milk Flow



High Type



Health Sire
(>0.8 DPR >3.5 PL)



TLG has one of the largest fresh sexed bull teams in Australia. Look for this symbol in the catalogue for the bulls that are available fresh sexed.

CONVENTIONAL
PLUS20™

PLUS20 - is your guarantee that the conventional semen carrying this logo contains over 20 Million sperm cells per straw and has over 20 years of development.

SexedULTRA4M™

Available also in Sexed Ultra 4M Semen

Vala Yoda **ANDREAS - P**

Yoda / Business Plan / Anton A2 STATUS: A2/A2
HB: AUS2047981 NASIS: TLGANDREAS DOB: 01/05/2018 NAAB:187H005434



CONVENTIONAL PLUS20™

SexedULTRA4™

RRP \$24.00 SEXED \$50.00

✓ New release high fertility, high type balanced sire

✓ A2/A2 Sire with polled influence

USDA CDCB Genomic Index August 2019							
GTPI	MILK	FAT	%F	PROT	%P	Rel%	NM\$
2557	1318	41	-0.03	53	0.05	74	683
DPR	PL	CALVING EASE	GEST LENGTH	SCS	PTAT	UDC	FEET& LEGS
1.5	6.4	5.3%	-4	2.85	2.56	2.69	1.12



Stanton's Freddie Cameo

Australian Indices August 2019										
BPI	TWI	HWI	ASI	Milk	Fat	Fat%	Prot	Prot%	Rel%	
285	254	259	88	585	12	-0.19	18	0.04	75	
Daughter Fertility		Somatic Cell Count		Milking Speed		Temperament		Likeability		
116		149		102		103		105		
Calving Ease		Feed Saved		Survival		Liveweight		TYPE MAMM		
103		-6		111		102		101 105		

CONFORMATION 0 Dgts 0 Herds USDA/HA Genomic Evaluation August 2019										
PTAT: 2.56 UDC: 2.69 FLC: 1.12			GTPI 2557							
Stature	Short							Tall	+1.74	
Strength	Frail							Strong	+0.68	
Body Depth	Shallow							Deep	+0.58	
Dairy Form	Tight Rib							Open Rib	+1.52	
Rump Angle	High							Sloped	+0.25	
Rump width	Narrow							Wide	+0.85	
RL SV	Posty							Sickle	-2.21	
RL RV	Hock-In							Straight	+1.13	
Foot Angle	Low							Steep	+1.90	
F & L Score	Low							High	+1.36	
Fore Attachment	Loose							Strong	+3.22	
Rear Udder Height	Low							High	+3.85	
Rear Udder Width	Narrow							Wide	+3.54	
Udder Cleft	Weak							Strong	+1.33	
Udder Depth	Deep							Shallow	+2.65	
Fore Teat Placement	Wide							Close	+0.91	
Rear Teat Placement	Wide							Close	+0.47	
Teat Length	Short							Long	-1.38	

Vala Bandares **ATTICUS**

Bandares / AltaSpring / Supersonic A2 STATUS: A2/A2
HB: AUS2047336 NASIS: TLGATTICUS DOB: 11/04/2018 NAAB:187H005435



CONVENTIONAL PLUS20™

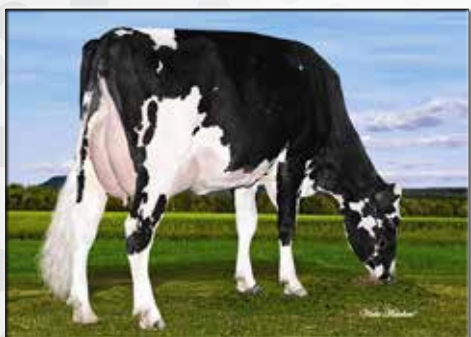
SexedULTRA4™

RRP \$24.00 SEXED \$50.00

✓ Outstanding Type and Udders +2.66 UDC

✓ High ranking BPI Sire at 321 BPI A2/A2 Sire

USDA CDCB Genomic Index August 2019							
GTPI	MILK	FAT	%F	PROT	%P	Rel%	NM\$
2497	688	54	0.10	39	0.07	77	639
DPR	PL	CALVING EASE	GEST LENGTH	SCS	PTAT	UDC	FEET& LEGS
0.2	5.4	7.5%	-2	2.68	2.42	2.66	1.30



GDAM: Velthuis Supersonic Alyssa VG

Australian Indices August 2019										
BPI	TWI	HWI	ASI	Milk	Fat	Fat%	Prot	Prot%	Rel%	
321	321	284	145	317	33	0.29	17	0.16	78	
Daughter Fertility		Somatic Cell Count		Milking Speed		Temperament		Likeability		
108		165		102		101		103		
Calving Ease		Feed Saved		Survival		Liveweight		TYPE MAMM		
101		62		112		98		103 105		

CONFORMATION 0 Dgts 0 Herds USDA/HA Genomic Evaluation August 2019										
PTAT: 2.42 UDC: 2.66 FLC: 1.30			GTPI 2497							
Stature	Short							Tall	+1.53	
Strength	Frail							Strong	+1.32	
Body Depth	Shallow							Deep	+0.60	
Dairy Form	Tight Rib							Open Rib	+0.05	
Rump Angle	High							Sloped	+0.64	
Rump width	Narrow							Wide	+1.37	
RL SV	Posty							Sickle	-1.26	
RL RV	Hock-In							Straight	+1.70	
Foot Angle	Low							Steep	+1.70	
F & L Score	Low							High	+1.39	
Fore Attachment	Loose							Strong	+3.58	
Rear Udder Height	Low							High	+3.38	
Rear Udder Width	Narrow							Wide	+3.11	
Udder Cleft	Weak							Strong	+0.99	
Udder Depth	Deep							Shallow	+3.06	
Fore Teat Placement	Wide							Close	+1.70	
Rear Teat Placement	Wide							Close	+1.36	
Teat Length	Short							Long	-2.03	

Grazing Sires are a strong component of TLG's Genetic Development Strategy

*TLG's Bull Portfolio offers sires that feature traits highly
desired by Grazing focussed operations.*

High Efficiency

Smaller Stature

Breed leading BPI and Net Merit\$

Short Gestation

High Fat Test

A2A2

Available in Fresh – Sexed and Conventional

TLGANDREAS-P

- 285 BPI
- 2.56 PTAT TYPE
- 116 Daughter Fertility
- A2/A2 Sire

TLGBOOM

- 336 BPI
- Short Gestation
- Medium Stature
- High Fat % 0.24%

TLGATTICUS

- 321 BPI
- +2.62 Udders
- Short Gestation
- A2/A2 Sire

TLGNADO

- 322 BPI
- 6.0% Calving Ease
- High milk flow
- Sister was previous #1 BPI female in Australia

TLGANSWER PP

- 777 Net Merit
- 5.9% Calving Ease
- Medium Stature
- Short Gestation

TLGLEMANS

- Milk and Components
- A2/A2 Sire
- Wide Sloped Rumps
- Popular Jersey Choice

Vala Quantum **NADO**

Quantum / Camaro / Numero Uno A2 STATUS: A1/A2
HB: AUS2047999 NASIS: TLGNADO DOB: 15/05/2018 NAAB:187H005434

RRP \$24.00

USDA CDCB Genomic Index							August 2019
GTPI	MILK	FAT	%F	PROT	%P	Rel%	NM\$
2443	1156	47	0.01	53	0.06	74	643
DPR	PL	CALVING EASE	GEST LENGTH	SCS	PTAT	UDC	FEET& LEGS
1.5	5.2	6.0%	-2	2.73	1.24	1.32	0.89



Ri-Val-Re Super Nadine

Australian Indices								August 2019	
BPI	TWI	HWI	ASI	Milk	Fat	Fat%	Prot	Prot%	Rel%
322	320	280	144	473	21	0.01	22	0.18	77
Daughter Fertility		Somatic Cell Count		Milking Speed		Temperament		Likeability	
109		167		101		102		105	
Calving Ease		Feed Saved		Survival		Liveweight		TYPE	MAMM
102		27		112		98		106	105

☒ *New release smaller stature sire with high fertility traits*

☑ *Full sister was previous #1 BPI female in Australia*

CONFORMATION					0 Dgts	0 Herds	USDA/HA Genomic Evaluation		August 2019	
PTAT: 1.24					UDC:1.32		FLC: 0.89		GTP1 2443	
Stature	Short							Tall	+0.57	
Strength	Frail							Strong	+0.44	
Body Depth	Shallow							Deep	-0.05	
Dairy Form	Tight Rib							Open Rib	+0.32	
Rump Angle	High							Sloped	+0.87	
Rump width	Narrow							Wide	+1.27	
RL SV	Posty							Sickle	+0.15	
RL RV	Hock-In							Straight	+0.68	
Foot Angle	Low							Steep	+0.90	
F & L Score	Low							High	+0.98	
Fore Attachment	Loose							Strong	+1.52	
Rear Udder Height	Low							High	+2.37	
Rear Udder Width	Narrow							Wide	+2.18	
Udder Cleft	Weak							Strong	+0.43	
Udder Depth	Deep							Shallow	+0.47	
Fore Teat Placement	Wide							Close	-0.25	
Rear Teat Placement	Wide							Close	-0.22	
Teat Length	Short							Long	+0.67	

Coomboona 1stClass **BOOM**



CONVENTIONAL
PLUS20™



1stClass / Supershot / Lexor A2 STATUS: A1/A2
HB: AUS1999123 NASIS: TLGBOOM DOB: 14/07/2017 NAAB:187H005414

RRP \$28.00 SEXED \$55.00

USDA CDCB Genomic Index							August 2019
GTPI	MILK	FAT	%F	PROT	%P	Rel%	NM\$
2371	54	66	0.24	26	0.09	76	608
DPR	PL	CALVING EASE	GEST LENGTH	SCS	PTAT	UDC	FEET& LEGS
-0.4	4.4	7.7%	-1	2.59	1.84	2.85	0.43

☒ Popular Fresh Semen Sire with quality udders +2.85 UDC

☑ *Ranks well on BPI and TPI*



Same cow family as Wiamy Bolton Kyana

Australian Indices								August 2019	
BPI	TWI	HWI	ASI	Milk	Fat	Fat%	Prot	Prot%	Rel%
336	349	302	127	80	31	0.40	11	0.18	80
Daughter Fertility		Somatic Cell Count		Milking Speed		Temperament		Likeability	
109		182		103		102		104	
Calving Ease		Feed Saved		Survival		Liveweight		TYPE	MAMM
102		26		110		98		104	109

CONFORMATION 0 Dgts 0 Herds USDA/HA Genomic Evaluation					August 2019	
PTAT: 1.84 UDC: 2.85 FLC: 0.43			GTP1 2371			
Stature	Short			<div></div>	Tall	+1.63
Strength	Frail			<div></div>	Strong	+0.36
Body Depth	Shallow			<div></div>	Deep	+0.36
Dairy Form	Tight Rib			<div></div>	Open Rib	+0.72
Rump Angle	High			<div></div>	Sloped	+0.01
Rump width	Narrow			<div></div>	Wide	+0.36
RL SV	Posty			<div></div>	Sickle	-1.11
RL RV	Hock-In			<div></div>	Straight	+0.21
Foot Angle	Low			<div></div>	Steep	+1.80
F & L Score	Low			<div></div>	High	+0.71
Fore Attachment	Loose			<div></div>	Strong	+3.41
Rear Udder Height	Low			<div></div>	High	+3.55
Rear Udder Width	Narrow			<div></div>	Wide	+3.27
Udder Cleft	Weak			<div></div>	Strong	+1.68
Udder Depth	Deep			<div></div>	Shallow	+2.94
Fore Teat Placement	Wide			<div></div>	Close	+1.68
Rear Teat Placement	Wide			<div></div>	Close	+1.98
Teat Length	Short			<div></div>	Long	+0.13

SexedULTRA 4M™

RRP \$22.00 SEXED \$55.00

☒ *Polled with medium stature and high fertility*

 *Calving Ease and short gestation sire*



Coomboona Answer Phen - PP

Australian Indices								August 2019	
BPI	TWI	HWI	ASI	Milk	Fat	Fat%	Prot	Prot%	Rel%
240	201	225	77	606	12	-0.21	17	0.01	76
Daughter Fertility		Somatic Cell Count		Milking Speed		Temperament		Likeability	
114		133		102		102		105	
Calving Ease		Feed Saved		Survival		Liveweight		TYPE	MAMM
102		51		112		96		98	103

CONFORMATION				0 Dgts	0 Herds	USDA/HA Genomic Evaluation		August 2019	
PTAT: 1.36				UDC: 1.51	FLC: 0.58		GTP1 2599		
Stature	Short							Tall	+1.41
Strength	Frail							Strong	+0.35
Body Depth	Shallow							Deep	-0.04
Dairy Form	Tight Rib							Open Rib	+1.18
Rump Angle	High							Sloped	+1.59
Rump width	Narrow							Wide	+0.84
RL SV	Posty							Sickle	+0.12
RL RV	Hock-In							Straight	+0.43
Foot Angle	Low							Steep	+0.55
F & L Score	Low							High	+0.93
Fore Attachment	Loose							Strong	+1.28
Rear Udder Height	Low							High	+2.69
Rear Udder Width	Narrow							Wide	+2.47
Udder Cleft	Weak							Strong	+0.56
Udder Depth	Deep							Shallow	+1.21
Fore Teat Placement	Wide							Close	+0.64
Rear Teat Placement	Wide							Close	+0.70
Teat Length	Short							Long	-0.53

SexedULTRA 4M™

RRP \$26.00 SEXED \$55.00

☒ *Outcross sire with production, type & fertility*

☒ *Polled genetics from the popular Maeve family*



Same family as Dudoc Franchise Maeve

Australian Indices								August 2019	
BPI	TWI	HWI	ASI	Milk	Fat	Fat%	Prot	Prot%	Rel%
305	298	281	90	631	13	-0.21	19	0.04	78
Daughter Fertility		Somatic Cell Count		Milking Speed		Temperament		Likeability	
116		163		101		103		105	
Calving Ease		Feed Saved		Survival		Liveweight		TYPE	MAMM
101		15		111		99		102	104

CONFORMATION 0 Dgts 0 Herds USDA/HA Genomic Evaluation				August 2019	
PTAT: 2.39 UDC: 2.37 FLC: 0.77		GTPI 2534			
Stature	Short				Tall +3.14
Strength	Frail				Strong +1.34
Body Depth	Shallow				Deep +0.72
Dairy Form	Tight Rib				Open Rib +0.78
Rump Angle	High				Sloped +0.90
Rump width	Narrow				Wide +2.02
RL SV	Posty				Sickle +0.53
RL RV	Hock-In				Straight +0.74
Foot Angle	Low				Steep +1.34
F & L Score	Low				High +1.49
Fore Attachment	Loose				Strong +3.24
Rear Udder Height	Low				High +3.51
Rear Udder Width	Narrow				Wide +3.23
Udder Cleft	Weak				Strong +1.23
Udder Depth	Deep				Shallow +3.33
Fore Teat Placement	Wide				Close +0.00
Rear Teat Placement	Wide				Close -0.02
Teat Length	Short				Long +0.14

Coomboona Duke MOHAWK



CONVENTIONAL PLUS20™

Duke / Monterey / Supersire A2 STATUS: A2/A2 SexedULTRA4M
HB: AUS1976256 NASIS: TLGMOHAWK DOB: 27/01/2017 NAAB:187H005383



Coomboona Duke Mohawk

RRP \$18.00 SEXED \$50.00

BPI 314 66% R

TWI 309 65% R

HWI 243 59% R

WORKABILITIES 78%Rel

Milking Speed 101

Temperament 103

Likability 105

Calving Ease 101

USDA CDCB Genomic Index August 2019

GTPI	MILK	FAT	%F	PROT	%P	Rel%	NM\$
2597	1947	107	0.12	75	0.05	78	840
DPR	PL	CALVING EASE	GEST LENGTH	SCS	PTAT	UDC	FEET& LEGS
-1.9	4.3	7.4%	-3	2.99	1.66	1.63	0.16

✓ Popular fresh semen sire high ranking on BPI & TPI

✓ A2/A2 sire with short gestation length

PRODUCTION ABV (g) 08/19

Milk	620	77% R
Fat	+43 kg	0.23
Protein	+27 kg	0.20
ASI	201	77% R

HEALTH ABV (g) 08/19

Cell Count	146	69%
Survival	109	51%
Feed Saved	-40	31%
Dtr Fertility	105	54%

CONFORMATION ABV (g) 0 Dgts 0 Herds 58% Rel August 2019

Overall Type 104		Mammary System 105	
Stature	104	Udder Texture	97
Bone Quality	104	Udder Depth	106
Angularity	101	Fore Attachment	102
Muzzle Width	96	Rear Att Height	108
Body Depth	97	Rear Att Width	101
Chest Width	100	Centre Ligament	103
Loin Strength	102	Teat Placement (Front)	102
Pin Width	102	Teat Placement (Rear)	100
Pin Set	94	Teat Length	93
Foot Angle	96		
Rear Set	101		
Rear Leg Rear View	97		

Lightning Ridge Modesty CATALYST



CONVENTIONAL PLUS20™

Modesty / Alta1stClass / Supersire A2 STATUS: A1/A2 SexedULTRA4M
HB: AUS2001341 NASIS: TLGCATALYST DOB: 13/08/2017 NAAB:18/HU04U5



Larcrest Canto

RRP \$24.00 SEXED \$50.00

BPI 240 67% R

TWI 255 66% R

HWI 234 60% R

WORKABILITIES 78%Rel

Milking Speed 104

Temperament 103

Likability 105

Calving Ease 103

USDA CDCB Genomic Index August 2019

GTPI	MILK	FAT	%F	PROT	%P	Rel%	NM\$
2419	521	70	0.18	33	0.06	79	736
DPR	PL	CALVING EASE	GEST LENGTH	SCS	PTAT	UDC	FEET& LEGS
-0.8	6.9	6.5%	-2	2.76	1.33	2.39	0.50

✓ Smaller stature sire with components

✓ Well attached udders with teat length

PRODUCTION ABV (g) 08/19

Milk	260	78% R
Fat	+24 kg	0.19
Protein	+8 kg	0.02
ASI	75	78% R

HEALTH ABV (g) 08/19

Cell Count	150	70%
Survival	111	54%
Feed Saved	110	32%
Dtr Fertility	106	56%

CONFORMATION ABV (g) 0 Dgts 0 Herds 60% Rel August 2019

Overall Type 105		Mammary System 105	
Stature	96	Udder Texture	99
Bone Quality	110	Udder Depth	110
Angularity	95	Fore Attachment	105
Muzzle Width	94	Rear Att Height	109
Body Depth	93	Rear Att Width	97
Chest Width	94	Centre Ligament	101
Loin Strength	98	Teat Placement (Front)	103
Pin Width	90	Teat Placement (Rear)	101
Pin Set	95	Teat Length	101
Foot Angle	99		
Rear Set	96		
Rear Leg Rear View	104		

POPULAR A2 SIRES

TLG has a variety of popular A2/A2 sires readily available for your next joining period:



Stantons Freddie Cameo

TLGANDREAS - P

(Yoda / Business Plan) A2/A2 Sire

2557 GTPI 285 BPI +2.56 PTAT +1318 Milk +1.5 DPR 5.3% C/Ease



GDAM: Velthuis Supersonic Alyssa

TLGATTICUS

(Bandares / AltaSpring) A2/A2 Sire

2497 GTPI 321 BPI +2.42 PTAT +688 Milk +0.2 DPR 7.5% C/Ease



CalbrettSupershot Mirabella

TLGMIRAND - PP RDC

(Zipit / Kingboy) A2/A2 Sire

2419 GTPI +3.63 PTAT +3.11 UDC +1444 Milk 7.4% C/Ease



TLGMohawk

TLGMOHAWK

(Duke / Monterey) A2/A2 Sire

2597 GTPI 314 BPI +1.66 PTAT +1947 Milk 7.4% C/Ease



Valbone daughter

VALBONE

(Valentino / Tbone) A2/A2 Sire

113 Overall Type 112 Mammary 106 Likability



Sister to Lemans

TLGLEMANS

(Lemonhead / Headline) A2/A2 Sire

12.70 JUI 108 Survival +0.80 PTAT 104 Likability

TLG has many more A2 sires available to suit your budget or breeding goals. For a complete list of A2 bulls speak to our Sales Manager Paul Douglas 0447 441 422 / sales@tlg.com.au or contact your local semen reseller...

TLG offers accredited A2 Testing to assist you with identifying the A2 animals in your herd. Contact TLG today for all your A2 testing requirements.

Coomboona Zipit **MIRAND - PP RDC**

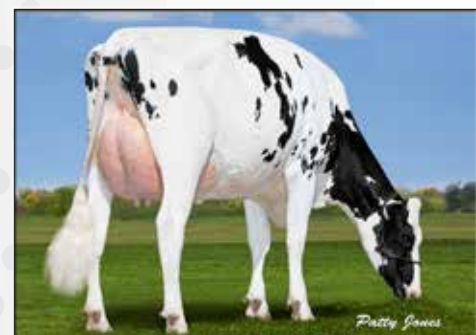
Zipit / Kingboy / Ladd P Red A2 STATUS: A2/A2
HB: AUS1993596 NASIS: TLGMIRAND DOB: 01/06/2017 NAAB:187H005402

Sexed**ULTRA4M**



RRP \$30.00 SEXED \$65.00

USDA CDCB Genomic Index							August 2019
GTPI	MILK	FAT	%F	PROT	%P	Rel%	NM\$
2419	1444	55	0.00	37	-0.2	79	523
DPR	PL	CALVING EASE	GEST LENGTH	SCS	PTAT	UDC	FEET& LEGS
0.00	2.9	7.4%	-1	2.96	3.63	3.11	1.31



Calbrett Supershot Mirabella

Australian Indices										August 2019
BPI	TWI	HWI	ASI	Milk	Fat	Fat%	Prot	Prot%	Rel%	
135	162	131	-7	566	5	-0.28	6	-0.18	77	
Daughter Fertility		Somatic Cell Count		Milking Speed		Temperament		Likeability		
107		152		102		100		103		
Calving Ease		Feed Saved		Survival		Liveweight		TYPE		MAMM
101		-106		108		103		107		111

✓ World leading high type polled A2/A2 sire

✓ +3.63 PTAT +3.11 UDC Milk 1444lbs 2419 GTPI

CONFORMATION				0 Dgts	0 Herds	USDA/HA Genomic Evaluation		August 2019	
PTAT: 3.63				UDC: 3.11				FLC: 1.31	GTPI 2419
Stature	Short						Tall	+3.28	
Strength	Frail						Strong	+0.98	
Body Depth	Shallow						Deep	+1.58	
Dairy Form	Tight Rib						Open Rib	+3.55	
Rump Angle	High						Sloped	+0.32	
Rump width	Narrow						Wide	+2.86	
RL SV	Posty						Sickle	+1.27	
RL RV	Hock-In						Straight	+1.19	
Foot Angle	Low						Steep	+1.73	
F & L Score	Low						High	+2.05	
Fore Attachment	Loose						Strong	+3.25	
Rear Udder Height	Low						High	+5.09	
Rear Udder Width	Narrow						Wide	+4.68	
Udder Cleft	Weak						Strong	+2.75	
Udder Depth	Deep						Shallow	+2.41	
Fore Teat Placement	Wide						Close	+1.57	
Rear Teat Placement	Wide						Close	+1.68	
Teat Length	Short						Long	+0.37	

Coomboona Modest **SPLENDORE**

Modesty / Kingboy / Mogul A2 STATUS: A1/A2
HB: AUS1976846 NASIS: TLGSPLNDRE DOB: 30/01/2017 NAAB:187H005382

Sexed**ULTRA4M**



CONVENTIONAL **PLUS20™**



RRP \$28.00 SEXED \$55.00

USDA CDCB Genomic Index							August 2019
GTPI	MILK	FAT	%F	PROT	%P	Rel%	NM\$
2444	203	49	0.15	28	0.08	78	634
DPR	PL	CALVING EASE	GEST LENGTH	SCS	PTAT	UDC	FEET& LEGS
1.3	5.0	6.1%	-1	2.89	2.12	3.04	1.14



GDam: Morsan Mogul Spooky VG86

Australian Indices										August 2019
BPI	TWI	HWI	ASI	Milk	Fat	Fat%	Prot	Prot%	Rel%	
224	224	208	64	-148	15	0.31	3	0.14	78	
Daughter Fertility		Somatic Cell Count		Milking Speed		Temperament		Likeability		
107		141		103		102		104		
Calving Ease		Feed Saved		Survival		Liveweight		TYPE		MAMM
102		26		111		97		102		105

✓ Popular Fresh Sexed Semen Sire

✓ High wide rear udders +3.04 UDC, wide sloped rumps

CONFORMATION				0 Dgts	0 Herds	USDA/HA Genomic Evaluation		August 2019
PTAT: 2.12		UDC: 3.04		FLC: 1.14		GTPI 2444		
Stature	Short						Tall	+1.41
Strength	Frail						Strong	-0.08
Body Depth	Shallow						Deep	-0.42
Dairy Form	Tight Rib						Open Rib	+0.89
Rump Angle	High						Sloped	+0.35
Rump width	Narrow						Wide	+0.34
RL SV	Posty						Sickle	+1.00
RL RV	Hock-In						Straight	+0.90
Foot Angle	Low						Steep	+1.05
F & L Score	Low						High	+1.47
Fore Attachment	Loose						Strong	+3.76
Rear Udder Height	Low						High	+3.52
Rear Udder Width	Narrow						Wide	+3.24
Udder Cleft	Weak						Strong	+0.95
Udder Depth	Deep						Shallow	+3.67
Fore Teat Placement	Wide						Close	+1.64
Rear Teat Placement	Wide						Close	+0.83
Teat Length	Short						Long	-0.27

Cairnbrae VALBONE



CONVENTIONAL PLUS20™

SexedULTRA4M

Valentino / Tbone EX93 / Alf EX93 A2 STATUS: A2/A2
HB: AUS664024 NASIS: VALBONE DOB: 06/04/2013



Valbone daughter Wanstead Valbone Ivette

BPI 42	72% R	WORKABILITIES 57% Rel
TWI 128	71% R	Milking Speed 103
HWI 26	64% R	Temperament 103
		Likability 106

- ✓ Farmers love the Valbone daughters with 106 Likability
- ✓ Overall Type +113 Mammary +112 A2/A2 Sire

RRP \$14.00 SEXED \$50.00

PRODUCTION ABV (g) 08/19			HEALTH ABV (g) 08/19		
Milk	-64L	83% R	Cell Count	94	72%
Fat	+7 kg	+0.19	Survival	109	61%
Protein	+2 kg	+0.09	Feed Saved	-88	31%
ASI	31	83% R	Dtr Fertility	92	64%

CONFORMATION ABV (g) 4 Dgts 2 Herds 67% Rel August 2019			
Overall Type 113		Mammary System 112	
Stature	103	Udder Texture	109
Bone Quality	104	Udder Depth	101
Angularity	107	Fore Attachment	107
Muzzle Width	110	Rear Att Height	105
Body Depth	105	Rear Att Width	110
Chest Width	105	Centre Ligament	104
Loin Strength	105	Teat Placement (Front)	110
Pin Width	105	Teat Placement (Rear)	105
Pin Set	102	Teat Length	100
Foot Angle	107	Rear Leg Rear View	101
Rear Set	98		

Riverside LEMANS



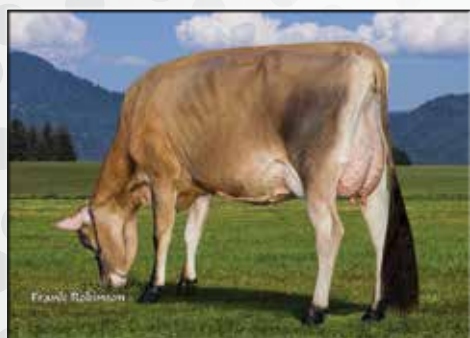
CONVENTIONAL PLUS20™

Lemonhead / Headline EX91 / Centurion EX91 A2 STATUS: A2/A2
HB: AUS724347 NASIS: TLGLEMAN DOB: 16/05/2016 NAAB: 187JE05369

RRP \$14.00 SEXED \$50.00

USDA CDCB Genomic Index August 2019							
GJPI	MILK	FAT	%F	PROT	%P	Rel%	CMS
74	188	33	0.12	8	0.01	75	290
DPR	PL	SCS	GEST LENGTH	HCR	CCR	PTAT	JUI
-0.1	4.3	2.89	2	0.4	0.2	0.80	12.70

Australian Indices								August 2019	
BPI	TWI	HWI	ASI	Milk	Fat	Fat%	Prot	Prot%	Rel%
87	114	77	32	198	9	-0.03	5	-0.03	74
Daughter Fertility		Somatic Cell Count		Milking Speed		Temperament		Likeability	
98		138		101		101		104	
Residual Survival		Feed Saved		Survival		Liveweight		TYPE	MAMM
105		-2		108		100		102	101



Sister to Dam: Sunset Canyon Valentino L Maid 42481

- ✓ Milk with shallow udders
- ✓ Wide sloped rumps
- ✓ A2/A2 Sire

CONFORMATION 0 Dgts 0 Herds USDA/HA Genomic Evaluation					August 2019	
PTAT: 0.80 JUI: 12.70			GJPI 74			
Stature	Short				Tall	+1.60
Strength	Frail				Strong	+0.20
Dairy Form	Tight Rib				Open Rib	-0.10
Rump Angle	High				Sloped	+1.20
Rump Width	Narrow				Wide	+0.30
RL SV	Posty				Sickle	+0.00
Foot Angle	Low				Steep	+0.40
Fore Attachment	Loose				Strong	+1.60
Rear Udder Height	Low				High	+0.80
Rear Udder Width	Narrow				Wide	-0.10
Udder Cleft	Weak				Strong	-0.30
Udder Depth	Deep				Shallow	+1.80
Fore Teat Placement	Wide				Close	-0.10
Teat Length	Short				Long	+0.40
		-2	-1	0	1	2

-2 -1 0 1 2



BOOKING CONFIRMATION

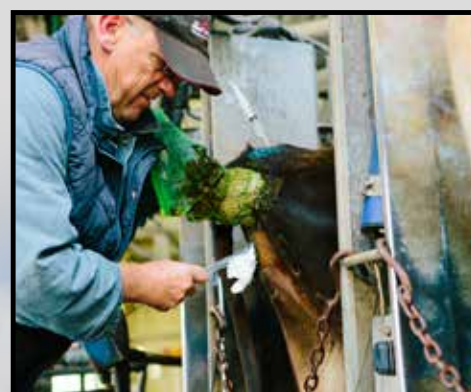
*Have you booked your **FRESH SEXED SEMEN** dates for your **SPRING** joining programs?*

- Success stories continue to be told
- We manage the logistics so it is delivered ontime
- Consider the opportunities with easily managed synchro programs
- Now is the ideal time to confirm your booking, so contact TLG today



**FRESH SEMEN
IS AS EASY AS...**

***“OUT OF THE ESKY,
INTO THE GUN
INTO THE COW”***



BOOKINGS FILLING FAST
*Book your Spring joining
requirements today...*





TLG is at the forefront of animal genetics and reproduction technology...

Delivering specialised services to the industry including:

- Australian standing bull team
- Semen Services
- Live Animal Export and Quarantine
- Embryo Services
- Import/Export of Genetic Material
- Genetic Material Storage and Despatch
- Genomic Testing



Sales Manager Paul Douglas

Phone: 0447 441 422 Email: sales@tlg.com.au

4969 Princes Hwy, Camperdown Victoria 3260

Phone: 61 3 5593 2016 Email: tlg@tlg.com.au www.tlg.com.au