

JERSEY

2019 SIRE DIRECTORY

Spring Update



Agri-Gene
Your No. 1 Dairy Source

Specialists in Superior Genetics

The Sexed**ULTRA** 4M™ difference

THE BEST WAY TO PREDICT
THE FUTURE IS TO *Create it*

- ▶ TWICE AS MANY FEMALE SPERM CELLS PER STRAW THAN IN ORIGINAL **SexedULTRA** PRODUCTS
- ▶ CONCEPTION RATES HIGHER THAN ORIGINAL **SexedULTRA** - NOW APPROACHING THOSE ACHIEVED USING CONVENTIONAL SEMEN
- ▶ GENDER ACCURACY CONSISTENTLY ABOVE 90 PERCENT
- ▶ **SexedULTRA 4M** IS UNIQUE TO **STgenetics**

STgenetics™
STgen.com

Sales@stgen.com • 1 900 921-6029



Follow us on:
facebook.com/STgenetics



Index

| | |
|----------------|----|
| ANTWON {4} | 9 |
| ARAMAC | 8 |
| BONTINO | 3 |
| BROWNLOW | 8 |
| AGRCHICAGO | 7 |
| CITATION | 6 |
| CRDIVIDEND | 10 |
| CRDIVINE | 10 |
| CRWORLDCUP {4} | 9 |
| CRAZEDOC | 6 |
| JETFIGHTER | 4 |
| MASTERS DEGREE | 7 |
| MAUIMAN | 7 |
| MINX | 8 |
| PIXSTARP | 5 |
| PRIMETEQUILA | 11 |
| PROPIOE {3} | 9 |
| PUBLICAN | 4 |
| STTUX | 10 |



SexedULTRA 4M™

ULTRA
SEXED



Facebook

Follow us on Facebook for the latest news on new dairy and beef sires along with new products and services.
www.facebook.com/agrigene

LARGE ENOUGH TO SERVICE – SMALL ENOUGH TO CARE

Limitation of liability: Agri-Gene, its employees and agents, cannot guarantee the conception rate or production to be obtained in connection with the use or recommended techniques of its product, namely semen and embryos. Any person relying on information setout herein does so entirely at their own risk and no claims will be entered into notwithstanding any negligence or omission on the part of Agri-Gene. Prices quoted are business to business transactions and do not include GST.

FRONT COVER: (l-r) Brookbora Bontino Belle and Brookbora Love Lies 737

BONTINO

CAIRNBRAE BONTINO | VALENTINO X TBONE X ALF

Bull ID: BONTINO • Nasid Code: 31JL02 • HB No: AUS691603



Sexed**ULTRA**4M



Cairnbrae Bontino

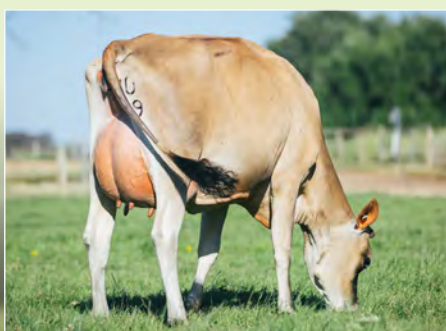
Sire: ALL LYNN'S LOUIE VALENTINO - ET
 Dam: CAIRNBRAE TBONE ESTELLE - ET EX93
 305D 5,038M 5.5% 279F 3.7% 188P (kgs)
 MGS: RICHIES JACE TBONE A364
 MGD: CAIRNBRAE ALFS ESTELLE 93 - VHC93
 305D 5,754M 6.2% 357F 4.4% 252P (kgs)



Daughter: Jamber Bontino Lady 87 @ 2yrs



Daughter: Brookbora Love Lies 735



Glenfern Bontino Buoy

Australian ABV 08/19

| Production | | 93 Rel% |
|------------|-----------|---------|
| Dtrs: 113 | Herds: 32 | |
| BPI | 121 | 80 Rel% |
| HWI | 67 | 72 Rel% |
| TWI | 177 | 80 Rel% |
| ASI | 113 | |
| Milk | -125 | |
| Protein | 12kg | 0.36% |
| Fat | 9kg | 0.29% |
| RIP | 52 | |

| Workabilities | | 79 Rel% |
|---------------|-----|---------|
| Milking Speed | 105 | |
| Temperament | 102 | |
| Likeability | 106 | |

| Health Traits | | |
|---------------|------|---------|
| Survival | 110 | 68 Rel% |
| Res. Surv | 112 | 73 Rel% |
| Cell Count | 96 | 77 Rel% |
| Dtr Fertility | 94 | 67 Rel% |
| Feed Save | -133 | 37 Rel% |
| Liveweight | 107 | 81 Rel% |

Australian Type Linear 08/19

| | No. Dtrs: 38 | No. Herds: 11 | 78 Rel% |
|-------------------|--------------|---------------|---------|
| Linear | 90 | 100 | 110 |
| Overall Type | | | 110 |
| Mammary System | | | 109 |
| Stature | | | 107 |
| Udder Texture | | | 108 |
| Bone Quality | | | 100 |
| Angularity | | | 103 |
| Muzzle Width | | | 114 |
| Body Depth | | | 104 |
| Chest Width | | | 105 |
| Pin Width | | | 101 |
| Pin Set | | | 100 |
| Foot Angle | | | 110 |
| Rear Set | | | 95 |
| Rear View | | | 101 |
| Udder Depth | | | 104 |
| Fore Udder Att. | | | 104 |
| Rear Udder (H) | | | 102 |
| Rear Udder (W) | | | 109 |
| Centre Ligament | | | 103 |
| Front Teat Place. | | | 109 |
| Rear Teat Place. | | | 110 |
| Teat Length | | | 92 |
| Loin Strength | | | 103 |

- Bontino was one of Australia's most popular sires in 2017-18 & breeders are loving them now they are hitting the dairy. This comes as no surprise with his outstanding type & production proof.
- He is one of the most complete bulls in the breed with solid production, positive components & elite type with many milking daughters.



Daughter: Brookbora Love Lies 735

PUBLICAN

WHITE STAR PATRICK | BONTINO X ELTON X VALERIAN

Bull ID: **PUBLICAN** • Nasid Code: **31JJP01** • HB No: **AUS743172**



Sexed**ULTRA4M**

Sire: CAIRNBRAE BONTINO

Dam: WHITE STAR 5657 EX90

305D 7,642M 5.1% 390F 4.0% 306P (kgs)

MGS: CAIRNBRAE JACES ELTON GP84

MGD: WHITE STAR 5450

305D 5,917M 4.6% 271F 3.8% 224P (kgs)



White Star Patrick

JETFIGHTER

CAIRNBRAE TOP GUN | CAIRNBONE X VALENTINO X SIGNATURE

Bull ID: **JETFIGHTER** • Nasid Code: **31JN02** • HB No: **AUS736519**



Sexed**ULTRA4M**

Sire: CAIRNBRAE TBONE ENSIGN

Dam: CAIRNBRAE VALENTINO DAISY 2 - EX 93

303D 7,824M 5.47% 428F 3.74% 293P (kgs)

MGS: ALL LYNNS LOUIE VALENTINO - ET

MGD: CAIRNBRAE SIGNATURE DAISY 4 - EX91

305D 6,925M 5.4% 375F 3.8% 260P (kgs)



Dam: Cairnbrae Valentino Daisy 2 EX93. Honourable Mention Champion Jersey IDW 2019

Australian ABV 08/19

| Production | 75 Rel% |
|------------|-------------|
| Dtrs: G | Herds: G |
| BPI | 256 63 Rel% |
| HWI | 181 56 Rel% |
| TWI | 266 62 Rel% |
| ASI | 201 |
| Milk | -269 |
| Protein | 18kg 0.58% |
| Fat | 29kg 0.83% |
| RIP | N/A |

| Workabilities | 59 Rel% |
|---------------|---------|
| Milking Speed | 104 |
| Temperament | 104 |
| Likeability | 106 |

| Health Traits | | |
|---------------|-----|---------|
| Survival | 109 | 48 Rel% |
| Res. Surv | 109 | 54 Rel% |
| Cell Count | 97 | 66 Rel% |
| Dtr Fertility | 100 | 48 Rel% |
| Feed Save | -40 | 25 Rel% |
| Liveweight | 102 | 55 Rel% |

Australian Type Linear 08/19

| No. Dtrs: G | No. Herds: G | | 52 Rel% |
|-------------------|--------------|-------------|---------|
| Linear | 90 | 100 | 110 |
| Overall Type | | <div></div> | 106 |
| Mammary System | | <div></div> | 105 |
| Stature | | | 100 |
| Udder Texture | | <div></div> | 105 |
| Bone Quality | | | 100 |
| Angularity | | <div></div> | 105 |
| Muzzle Width | | <div></div> | 111 |
| Body Depth | | <div></div> | 102 |
| Chest Width | | <div></div> | 106 |
| Pin Width | | <div></div> | 102 |
| Pin Set | | <div></div> | 103 |
| Foot Angle | | <div></div> | 106 |
| Rear Set | | <div></div> | 97 |
| Rear View | | <div></div> | 102 |
| Udder Depth | | <div></div> | 99 |
| Fore Udder Att. | | <div></div> | 102 |
| Rear Udder (H) | | <div></div> | 99 |
| Rear Udder (W) | | <div></div> | 105 |
| Centre Ligament | | <div></div> | 103 |
| Front Teat Place. | | <div></div> | 108 |
| Rear Teat Place. | | <div></div> | 105 |
| Teat Length | | <div></div> | 97 |
| Loin Strength | | <div></div> | 105 |

Australian ABV 08/19

| Production | 75 Rel% |
|------------|-------------|
| Dtrs: G | Herds: G |
| BPI | 203 66 Rel% |
| HWI | 153 58 Rel% |
| TWI | 256 64 Rel% |
| ASI | 139 |
| Milk | 279 |
| Protein | 16kg 0.15% |
| Fat | 30kg 0.28% |
| RIP | N/A |

| Workabilities | 64 Rel% |
|---------------|---------|
| Milking Speed | 100 |
| Temperament | 102 |
| Likeability | 104 |

| Health Traits | | |
|---------------|-----|---------|
| Survival | 108 | 51 Rel% |
| Res. Surv | 106 | 58 Rel% |
| Cell Count | 129 | 69 Rel% |
| Dtr Fertility | 98 | 56 Rel% |
| Feed Save | -64 | 27 Rel% |
| Liveweight | 104 | 59 Rel% |

Australian Type Linear 08/19

| No. Dtrs: G | No. Herds: G | 57 Rel% | |
|-------------------|--------------|-------------|-----|
| Linear | 90 | 100 | 110 |
| Overall Type | | <div></div> | 110 |
| Mammary System | | <div></div> | 112 |
| Stature | | <div></div> | 102 |
| Udder Texture | | <div></div> | 110 |
| Bone Quality | | <div></div> | 103 |
| Angularity | | <div></div> | 107 |
| Muzzle Width | | <div></div> | 101 |
| Body Depth | | <div></div> | 105 |
| Chest Width | | <div></div> | 102 |
| Pin Width | | <div></div> | 103 |
| Pin Set | | <div></div> | 101 |
| Foot Angle | | <div></div> | 101 |
| Rear Set | | | 100 |
| Rear View | | <div></div> | 103 |
| Udder Depth | | | 100 |
| Fore Udder Att. | | <div></div> | 106 |
| Rear Udder (H) | | <div></div> | 107 |
| Rear Udder (W) | | <div></div> | 109 |
| Centre Ligament | | <div></div> | 106 |
| Front Teat Place. | | <div></div> | 106 |
| Rear Teat Place. | | <div></div> | 106 |
| Teat Length | | | 100 |
| Loin Strength | | <div></div> | 106 |

- Currently ranks amongst the breeds highest BPI sires and is from the heart of leading BPI herd White Star.
- He combines his BPI with daughter fertility and outstanding type proof that will add chest and muzzle width, two things the breed a screaming for.



Miami Elton Girlie 4588

- Jetfighter is the all-round sire from one of Australia's great cow families with his dam named Honourable Champion at IDW 2019.
- He is one of the best in the breed for BPI with Type & an ideal production proof.



Cairnbrae Top Gun

PIXSTARP

Sexed**ULTRA**4M™

DIAMOND HILL OLIVER PIXSTAR P - ET | OLIVER X CHROME X JACE
Bull ID: **PIXSTARP** • Nasid Code: **31JJP02** • HB No: **AUS748149**

Sire: **DUTCH HOLLOW OLIVER P**
Dam: **DIAMOND HILL CHROME PIXEL - ET**
VG87-2YRS

MGS: **RIVER VALLEY CECE CHROME**
MGD: **HAWARDEN JACE PIX - EX95**
305D 17,020M 4.8% 819F 3.4% 585P (kgs)



Diamond Hill Oliver Pixstar P-ET



MGD: Hawarden Jace Pix EX95



Dam: Diamond Hill Chrome Pixel - ET VG87

- A2 and polled genetics at it's finest from a world class cow family and an EX95 Gdam.
- Over +700 milk with type & udders from a Chrome sister to Premier. He is one of the most complete Polled Jersey sires on BPI.

USDA Sire Summary 08/19

| Dtrs: G | Herds: G | NMS | 408 |
|---------|-------------|-----|------|
| Milk | 717 | PL | 3.5 |
| %Rel | 76 | SCC | 2.89 |
| Protein | 29lbs 0.02% | DPR | -0.9 |
| Fat | 47lbs 0.06% | SCR | N/A |

USDA Genomic Type Linear 08/19

| | | |
|-------------|--------------|-----------|
| JPI: 124 | PTAT: 1.80 | JUI: 20.8 |
| No. Dtrs: G | No. Herds: G | Rel% 77 |

| Linear | -2 | 0 | 2 | |
|-------------------|----|---|---|-------|
| Stature | | | | 0.60 |
| Strength | | | | 0.00 |
| Dairy Form | | | | 1.00 |
| Thurl Width | | | | 0.60 |
| Rump Angle | | | | 0.10 |
| Legs-Side View | | | | -0.50 |
| Foot Angle | | | | 0.20 |
| Fore Udder Att. | | | | 1.40 |
| Rear Udder Att. H | | | | 1.80 |
| Rear Udder Att. W | | | | 0.70 |
| Udder Cleft | | | | 0.70 |
| Udder Depth | | | | 1.60 |
| Front Teat Place. | | | | 1.10 |
| Teat Length | | | | -0.50 |

Australian Genomic ABV's 08/19

| Dtrs: G | Herds: G | Protein | 8kg -0.14% |
|---------|-------------|-----------|-------------|
| BPI | 144 61 Rel% | Fat | 9kg -0.26% |
| HWI | 144 54 Rel% | Type | 105 |
| TWI | 161 59 Rel% | Udder | 105 |
| ASI | 26 | SCC | 138 65 Rel% |
| Milk | 417 72 Rel% | Fertility | 105 50 Rel% |



MGD: Hawarden Jace Pix EX95

(photo Bradley Cullen)

CITATION

BW CITATION A - ET | IRWIN X CENTURION X AVERY

Bull ID: **CITATION** • Nasid Code: **80JIM38** • HB No: **USA118367576**



Sire: **ALL LYNN'S VALENTINO IRWIN - ET**
 Dam: **BW CENTURION PEGGY K798 - EX92**
 305D 25,550M 5.2% 1327F 3.3% 833P (lbs)
 MGS: **SOONER CENTURION - ET**
 MGD: **BW AVERY SUZANNE ET 119 - ET EX90**
 305D 24,100M 5.0% 1195F 3.3% 797P (lbs)



Dtr: BW Citation Marta VG87

USDA Sire Summary 08/19

| | |
|------------------|---------------------|
| Dtrs: 965 | Herds: 186 |
| Milk | 354 |
| %Rel | 99 |
| Protein | 10lbs -0.01% |
| Fat | 22lbs 0.03% |
| NM\$ | 314 |
| PL | 5.4 |
| SCC | 3.04 |
| DPR | -0.2 |
| SCR | -1 |

Australian Genomic ABV 08/19

| | | |
|-----------|-------------------|---------|
| BPI | 111 | 73 Rel% |
| HWI | 109 | 66 Rel% |
| TWI | 183 | 72 Rel% |
| ASI | 11 | |
| Milk | 173 | 78 Rel% |
| Protein | 1kg -0.10% | |
| Fat | 11kg 0.03% | |
| Type | 108 | |
| Udder | 110 | |
| SCC | 121 | 82 Rel% |
| Fertility | 100 | 75 Rel% |

USDA Genomic Type Linear 08/19

| | | | | | |
|----------------------|-----------------------|----|---|---|------------------|
| JPI: 90 | PTAT: 1.70 | | | | JUI: 27.1 |
| No. Dtrs: 727 | No. Herds: 144 | | | | Rel% 98 |
| Linear | -2 | -1 | 0 | 1 | 2 |
| Stature | | | | | 1.30 |
| Strength | | | | | -0.20 |
| Dairy Form | | | | | 0.50 |
| Thurl Width | | | | | 0.10 |
| Rump Angle | | | | | -0.30 |
| Legs-Side View | | | | | -0.50 |
| Foot Angle | | | | | 0.30 |
| Fore Udder Att. | | | | | 3.10 |
| Rear Udder Att. H | | | | | 1.40 |
| Rear Udder Att. W | | | | | 0.40 |
| Udder Cleft | | | | | -1.10 |
| Udder Depth | | | | | 3.40 |
| Front Teat Place. | | | | | 1.60 |
| Teat Length | | | | | -1.00 |

CRAZEDOC

AHLEM CRAZE DOC 24061-ET | CRAZE X PLUS X VALENTINO

Bull ID: **CRAZEDOC** • Nasid Code: **80JJP56** • HB No: **8403144728256**



Sire: **RIVER VALLEY CIRCUS CRAZE-ET**
 Dam: **AHLEM PLUS DEE 42868 EX90**
 305D 21,250M 4.5% 955P 3.6% 758P
 MGS: **SWEETIE PLUS IATOLAS BOLD**
 MGD: **AHLEM VALENTINO DEE 38548 VG86**
 305D 23,470M 4.6% 1071F 3.6% 852P



Dam: Ahlem Plus Dee 42868 EX90

USDA Sire Summary 08/19

| | |
|----------------|---------------------|
| Dtrs: G | Herds: G |
| Milk | 929 |
| %Rel | 73 |
| Protein | 32lbs -0.01% |
| Fat | 41lbs -0.02% |
| NM\$ | 492 |
| PL | 5.7 |
| SCC | 2.93 |
| DPR | 1.3 |
| SCR | N/A |

USDA Genomic Type Linear 08/19

| | | | |
|--------------------|---------------------|------------------|-------|
| JPI: 150 | PTAT: 2.50 | JUI: 28.1 | |
| No. Dtrs: G | No. Herds: G | Rel% 75 | |
| Linear | -2 | 0 | 2 |
| Stature | | <div></div> | 0.80 |
| Strength | | <div></div> | -0.20 |
| Dairy Form | | <div></div> | 1.20 |
| Thurl Width | | <div></div> | -0.60 |
| Rump Angle | | <div></div> | 0.40 |
| Legs-Side View | | <div></div> | -0.60 |
| Foot Angle | | <div></div> | 1.20 |
| Fore Udder Att. | | <div></div> | 2.90 |
| Rear Udder Att. H | | <div></div> | 3.10 |
| Rear Udder Att. W | | <div></div> | 0.90 |
| Udder Cleft | | <div></div> | 0.30 |
| Udder Depth | | <div></div> | 2.60 |
| Front Teat Place. | | <div></div> | -0.10 |
| Teat Length | | <div></div> | 0.60 |

- Power packed cow family that has produced many bulls like, Country, Galahad and Kabala.
- He will improve fore and rear udders, udder depth and teat placement & was a standout sire on last year's Australia tour to the US.



BW Citation A-ET

- Doc is a new release Craze son that ticks all the boxes with Production, Type & Fertility.
- He has so much to offer with +2.5 Type, +28.1 udders with +1.3 DPR a combination that is hard to find.



Ahlem Craze Doc 24061-ET

AGRCHICAGO

AHLEM BANCROFT CHICAGO 23929 | BANCROFT X VIPER X LEGAL
Bull ID: **AGRCHICAGO** • Nasis Code: **80JJP58** • HB No: **USA67823929**



Sire: **AHLEM AXIS BANCROFT-ET**
Dam: **AHLEM VIPER CHARM 47521-ET VG87**

MGS: **FOREST GLEN VOLCANO VIPER**
MGD: **AHLEM LEGAL CHARM 35767 VG87**
305D 23,520M 5.0% 1,180F 4.0% 394P



- Chicago is an exciting new release sire with extreme type & production. His dam was one of the pick cows at Ahlem on our last tour to the US.
- He is currently equal No.1 Type bull in US with over 1340 milk.

Dam: *Ahlem Viper Charm 47521-ET VG87*

USDA Sire Summary 08/19

| Dtrs: G | Herds: G |
|---------|--------------|
| Milk | 1342 |
| %Rel | 76 |
| Protein | 48lbs 0% |
| Fat | 48lbs -0.07% |
| NM\$ | 446 |
| PL | 2.4 |
| SCC | 3.0 |
| DPR | -2.9 |
| SCR | -2.7 |

USDA Genomic Type Linear 08/19

| | | | |
|-------------------|--------------|-------------|-------|
| JPI: 146 | PTAT: 2.80 | JUI: 28.3 | |
| No. Dtrs: G | No. Herds: G | Rel% 77 | |
| Linear | -2 | 0 | 2 |
| Stature | | <div></div> | 0.20 |
| Strength | | <div></div> | -0.50 |
| Dairy Form | | <div></div> | 1.80 |
| Thurl Width | | <div></div> | 0.60 |
| Rump Angle | | <div></div> | -0.30 |
| Legs-Side View | | <div></div> | -0.20 |
| Foot Angle | | <div></div> | 0.50 |
| Fore Udder Att. | | <div></div> | 2.30 |
| Rear Udder Att. H | | <div></div> | 3.20 |
| Rear Udder Att. W | | <div></div> | 1.40 |
| Udder Cleft | | <div></div> | 0.40 |
| Udder Depth | | <div></div> | 2.30 |
| Front Teat Place. | | <div></div> | 1.00 |
| Teat Length | | <div></div> | -0.10 |

MASTERS DEGREE

YOSEMITE KW MASTERS DEGREE-ET | KWYNN X MASTERS X PLUS
Bull ID: **MASTERDEGREE** • Nasis Code: **80JJF57** • HB No: **8403131274413**



Sire: **CDF KARBALA KWYNN**
Dam: **YOSEMITE MASTERS PLUS T32320 EX90**
305D 20,930M 5.4% 1133F 4.0% 840P

MGS: **DUPAT ZUMA MASTERS-ET**
MGD: **YOSEMITE PLUS CELEBRITY R27466 GP80**
256D 14,760M 4.6% 683F 3.6% 536P



- New release outcross sire with solid production, type & fertility at +1.1 DPR.
- Master Degree has a unique pedigree & his dam is one of the great young cows at Yosemite.

Dam: *Yosemite Masters Plus T32320 EX90*

USDA Sire Summary 08/19

| Dtrs: G | Herds: G |
|---------|-------------|
| Milk | 478 |
| %Rel | 76 |
| Protein | 29lbs 0.06% |
| Fat | 48lbs 0.13% |
| NM\$ | 413 |
| PL | 2.9 |
| SCC | 2.87 |
| DPR | 1.1 |
| SCR | N/A |

USDA Genomic Type Linear 08/19

| USDA Economic Type Linear Score | | | |
|---------------------------------|--------------|-------------|-----------|
| JPI: 140 | PTAT: 2.10 | | JUL: 26.1 |
| No. Dtrs: G | No. Herds: G | | Rel% 77 |
| Linear | -2 | 0 | 2 |
| Stature | | <div></div> | 1.70 |
| Strength | <div></div> | | -0.40 |
| Dairy Form | | <div></div> | 1.60 |
| Thurl Width | | <div></div> | -0.20 |
| Rump Angle | | <div></div> | 0.90 |
| Legs-Side View | <div></div> | | -0.50 |
| Foot Angle | | <div></div> | 0.70 |
| Fore Udder Att. | | <div></div> | 2.40 |
| Rear Udder Att. H | | <div></div> | 2.10 |
| Rear Udder Att. W | | <div></div> | 1.20 |
| Udder Cleft | | <div></div> | 0.50 |
| Udder Depth | | <div></div> | 2.50 |
| Front Teat Place. | | <div></div> | 0.50 |
| Teat Length | | <div></div> | 0.10 |

MAUI MAN

AHLEM VALENTINO MAUI 21838 | VALENTINO X HEADLINE X LEGION
Bull ID: **MAUIMAN** • Nasis Code: **80JJH27** • HB No: **USA68951472**



SexedULTRA 4M



Maui Man daughter

Sire: **ALL LYNNS LOUIE VALENTINO - ET**
Dam: **AHLEM HEADLINE MAID 34177 - ET EX90**
305D 15,200M 5.1% 771F 3.5% 536P (lbs)
MGS: **SCHULTZ RESCUE HEADLINE**
MGD: **SUNSET CANYON LEGION L MAID - EX90**
305D 21,520M 5.3% 1139F 3.7% 797P (lbs)

USDA Sire Summary 08/19

| Dtrs: 1429 | Herds: 137 |
|------------|---------------|
| Milk | 273 |
| %Rel | 99 |
| Protein | -5lbs -0.07% |
| Fat | -15lbs -0.14% |
| NM\$ | 83 |
| PL | 4.3 |
| SCC | 3.10 |
| DPR | -0.1 |
| SCR | N/A |

USDA Genomic Type Linear 08/19

| JPI: 19 | | PTAT: 1.90 | | JUI: 30.6 | |
|-------------------|----|---------------|---|-----------|-------|
| No. Dtrs: 438 | | No. Herds: 71 | | Rel% 98 | |
| Linear | -2 | 0 | 2 | | |
| Stature | | | | | 0.60 |
| Strength | | | | | 0.60 |
| Dairy Form | | | | | 0.10 |
| Thurl Width | | | | | 0.90 |
| Rump Angle | | | | | 0.10 |
| Legs-Side View | | | | | -0.80 |
| Foot Angle | | | | | 1.00 |
| Fore Udder Att. | | | | | 3.00 |
| Rear Udder Att. H | | | | | 2.10 |
| Rear Udder Att. W | | | | | 0.10 |
| Udder Cleft | | | | | 0.00 |
| Udder Depth | | | | | 3.50 |
| Front Teat Place. | | | | | 0.50 |
| Teat Length | | | | | -0.20 |

- Maui is one of the highest type bulls in the breed, now proven with 1429 daughters & a pick sire in 2018 for an Australian tour group.
- It is one of the few times we see a bull with a 30.6 JUI & unmatched for udder depth, rear udder height & fore udder attachment.

ARAMAC

BROOKBORA ARAMAC | VALENTINO X TBONE X TARANAK
Bull ID: **ARAMAC** • Nasid Code: **31JJN01** • HB No: **AUS727659**



Sire: **ALL LYNN'S LOUIE VALENTINO - ET**
Dam: **BROOKBORA LOVE LIES 620 EX90**
103D 7,095M 5.36% 380F 3.96% 281P (kgs)
MGS: **RICHIES JACE TBONE A364**
MGD: **BROOKBORA LOVE LIES 561 EX90**
350D 7,491M 4.6% 343F 3.7% 281P (kgs)



- Aramac is from the heart of the great Love Lies family at Brookbora.
- He is the total package of milk, components, type, udder, great temperament and will also add width & strength.

Family member:
Brookbora Love Lies 613 EX 93

Australian ABV 08/19

| Production | | 77 Rel% |
|---------------|----------|---------|
| Dtrs: G | Herds: G | |
| BPI | 173 | 67 Rel% |
| HWI | 126 | 60 Rel% |
| TWI | 211 | 66 Rel% |
| ASI | 121 | |
| Milk | 85 | |
| Protein | 15kg | 0.26% |
| Fat | 14kg | 0.18% |
| RIP | N/A | |
| Workabilities | | 65 Rel% |
| Milking Speed | 102 | |
| Temperament | 105 | |
| Likeability | 107 | |
| Health Traits | | |
| Survival | 111 | 57 Rel% |
| Res. Surv | 110 | 62 Rel% |
| Cell Count | 106 | 71 Rel% |
| Dtr Fertility | 97 | 59 Rel% |
| Feed Save | -71 | 28 Rel% |
| Liveweight | 104 | 61 Rel% |

Australian Type Linear 08/19

| No. Dtrs: G | | No. Herds: G | | 60 Rel% |
|-------------------|--|--------------|-----|---------|
| Linear | | 90 | 100 | 110 |
| Overall Type | | | | 107 |
| Mammary System | | | | 109 |
| Stature | | | | 103 |
| Udder Texture | | | | 102 |
| Bone Quality | | | | 102 |
| Angularity | | | | 105 |
| Muzzle Width | | | | 108 |
| Body Depth | | | | 103 |
| Chest Width | | | | 105 |
| Pin Width | | | | 105 |
| Pin Set | | | | 106 |
| Foot Angle | | | | 104 |
| Rear Set | | | | 97 |
| Rear View | | | | 102 |
| Udder Depth | | | | 101 |
| Fore Udder Att. | | | | 104 |
| Rear Udder (H) | | | | 105 |
| Rear Udder (W) | | | | 109 |
| Centre Ligament | | | | 104 |
| Front Teat Place. | | | | 106 |
| Rear Teat Place. | | | | 107 |
| Teat Length | | | | 96 |
| Loin Strength | | | | 109 |

BROWNLOW

DALBORA BRAX 5097 BROWNLOW | BRAX X TBONE X IMPULS
Bull ID: **BROWNLOW** • Nasid Code: **31JL01** • HB No: **AUS695876**



Sire: **PANNOO BRAX**
Dam: **DALBORA TB BABE VG87**
305D 7,673M 5.38% 413F 4.21% 323P (kgs)
MGS: **RICHIES JACE TBONE A364**
MGD: **MELDAN IMPULS BABE - ET GP83**
305D 6,978M 4.76% 332F 4.01% 280P (kgs)



- Brownlow comes from the heart of the Babe family. He will help improve your overall type & udders, feet & legs.
- With his extreme components, good workabilities he has a lot to offer.

Daughter: Brookbora Love Lives 737

Australian ABV 08/19

| Production | | 86 Rel% |
|---------------|-----------|---------|
| Dtrs: 56 | Herds: 18 | |
| BPI | 95 | 73 Rel% |
| HWI | 57 | 64 Rel% |
| TWI | 106 | 72 Rel% |
| ASI | 89 | |
| Milk | -242 | |
| Protein | 5kg | 0.28% |
| Fat | 17kg | 0.58% |
| RIP | 58 | |
| Workabilities | | 72 Rel% |
| Milking Speed | 100 | |
| Temperament | 104 | |
| Likeability | 102 | |
| Health Traits | | |
| Survival | 106 | 57 Rel% |
| Res. Surv | 109 | 62 Rel% |
| Cell Count | 114 | 69 Rel% |
| Dtr Fertility | 98 | 54 Rel% |
| Feed Save | -44 | 31 Rel% |
| Liveweight | 102 | 67 Rel% |

Australian Type Linear 08/19

| No. Dtrs: 7 | | No. Herds: 3 | | 64 Rel% |
|-------------------|--|--------------|-----|---------|
| Linear | | 90 | 100 | 110 |
| Overall Type | | | | 101 |
| Mammary System | | | | 102 |
| Stature | | | | 103 |
| Udder Texture | | | | 101 |
| Bone Quality | | | | 97 |
| Angularity | | | | 96 |
| Muzzle Width | | | | 100 |
| Body Depth | | | | 101 |
| Chest Width | | | | 101 |
| Pin Width | | | | 103 |
| Pin Set | | | | 94 |
| Foot Angle | | | | 97 |
| Rear Set | | | | 103 |
| Rear View | | | | 100 |
| Udder Depth | | | | 104 |
| Fore Udder Att. | | | | 103 |
| Rear Udder (H) | | | | 97 |
| Rear Udder (W) | | | | 100 |
| Centre Ligament | | | | 102 |
| Front Teat Place. | | | | 103 |
| Rear Teat Place. | | | | 103 |
| Teat Length | | | | 96 |
| Loin Strength | | | | 96 |

MINX

STONYRUN AUS TBONE MINX | TBONE X VANAHLEM X LARFALOT
Bull ID: **MINX** • Nasid Code: **31JJM01** • HB No: **AUS704366**



Sire: **RICHIES JACE TBONE A364**
Dam: **STONYRUN AUS VANAHLEM MARY SUE 2 - EX90**
305D 6,560M 4.8% 314F 3.6% 236P (lbs)
MGS: **PANNOO ABE VANAHLEM**
MGD: **STONYRUN AUS LARFALOT MARY SUE 2 - VG88**
305D 6,676M 5.6% 377F 4.0% 265P (kgs)



- He has the perfect balance of Milk, components & same family that produced Mannix.
- He brings a lot to the table that breeders are asking for; chest width, muzzle width, body depth, solid all-round type & udders

Dam: Stonyrun Aus Vanahlem
Mary Sue 2 EX90

Australian ABV 08/19

| Production | | 77 Rel% |
|---------------|----------|---------|
| Dtrs: G | Herds: G | |
| BPI | 138 | 68 Rel% |
| HWI | 85 | 60 Rel% |
| TWI | 174 | 66 Rel% |
| ASI | 131 | |
| Milk | 200 | |
| Protein | 15kg | 0.18% |
| Fat | 26kg | 0.28% |
| RIP | 100 | |
| Workabilities | | 66 Rel% |
| Milking Speed | 103 | |
| Temperament | 105 | |
| Likeability | 105 | |
| Health Traits | | |
| Survival | 107 | 59 Rel% |
| Res. Surv | 108 | 63 Rel% |
| Cell Count | 108 | 72 Rel% |
| Dtr Fertility | 94 | 60 Rel% |
| Feed Save | -68 | 28 Rel% |
| Liveweight | 104 | 62 Rel% |

Australian Type Linear 08/19

| No. Dtrs: G | | No. Herds: G | | 60 Rel% |
|-------------------|--|--------------|-----|---------|
| Linear | | 90 | 100 | 110 |
| Overall Type | | | | 106 |
| Mammary System | | | | 104 |
| Stature | | | | 102 |
| Udder Texture | | | | 106 |
| Bone Quality | | | | 103 |
| Angularity | | | | 105 |
| Muzzle Width | | | | 105 |
| Body Depth | | | | 103 |
| Chest Width | | | | 105 |
| Pin Width | | | | 106 |
| Pin Set | | | | 98 |
| Foot Angle | | | | 99 |
| Rear Set | | | | 100 |
| Rear View | | | | 99 |
| Udder Depth | | | | 98 |
| Fore Udder Att. | | | | 104 |
| Rear Udder (H) | | | | 98 |
| Rear Udder (W) | | | | 102 |
| Centre Ligament | | | | 103 |
| Front Teat Place. | | | | 104 |
| Rear Teat Place. | | | | 104 |
| Teat Length | | | | 102 |
| Loin Strength | | | | 105 |

CR WORLD CUP {4}

CO-OP AD WORLD CUP {4}-ET | CHILI X MARVEL X RENEGADE

Bull ID: CRWORLD CUP • Nasid Code: 80JJM59 • HB No: 8403126073776



Sire: ROWLEYS 11 VISIONARY CHILI-ET
Dam: FARIA BROTHERS MARVEL HAMM-ET

MGS: ALL LYNNS VALENTINO MARVEL
MGD: GR FARIA BROTHERS RENEGADE WILFORK - VG82
305D 17,699M 1.8% 856F 3.6% 644P



- World Cup is new release A2A2, DPR proven outcross sire.
- Unique combination of high production with components & Udder index over +20. Progeny approved to be registered by Jersey Australia.

Dtr: JX PVF World Cup Zarifa

USDA Sire Summary 08/19

| Dtrs: 414 | Herds: 41 |
|-----------|-------------|
| Milk | 458 |
| %Rel | 97 |
| Protein | 37lbs 0.10% |
| Fat | 43lbs 0.11% |
| NM\$ | 506 |
| PL | 5.9 |
| SCC | 2.95 |
| DPR | 0.7 |
| SCR | -2.2 |

Australian Genomic ABV 08/19

| | | | |
|-----------|------|-------|------|
| BPI | 152 | 64 | Rel% |
| HWI | 125 | 57 | Rel% |
| TWI | 174 | 62 | Rel% |
| ASI | 92 | | |
| Milk | -232 | 72 | Rel% |
| Protein | 7kg | 0.33% | |
| Fat | 10kg | 0.43% | |
| Type | 103 | | |
| Udder | 103 | | |
| SCC | 130 | 76 | Rel% |
| Fertility | 101 | 55 | Rel% |

USDA Genomic Type Linear 08/19

| | | | |
|-------------------|---------------|-----------|-------|
| JPI: 161 | PTAT: 1.20 | JUI: 20.3 | |
| No. Dtrs: 39 | No. Herds: 12 | Rel% 86 | |
| Linear | -2 | 0 | 2 |
| Stature | | | 0.30 |
| Strength | | | 0.00 |
| Dairy Form | | | 0.70 |
| Thurl Width | | | -1.70 |
| Rump Angle | | | 1.00 |
| Legs-Side View | | | -0.60 |
| Foot Angle | | | 0.90 |
| Fore Udder Att. | | | 2.70 |
| Rear Udder Att. H | | | 0.80 |
| Rear Udder Att. W | | | 0.60 |
| Udder Cleft | | | 0.10 |
| Udder Depth | | | 1.70 |
| Front Teat Place. | | | 1.90 |
| Teat Length | | | 0.00 |

PROPJOE {3}

FARIA BROTHERS PROP JOE - ET | HILARIO X TARGET X ACTION

Bull ID: PROPJOE • Nasid Code: 80JJK34 • HB No: USA3011609994



Sire: CAL-MART RENEGADE HILARIO - ET
Dam: GR FARIA BROTHERS TARGET RONALDO - VG88

305D 20,630M 5.3% 1097F 3.6% 750P (lbs)
MGS: SUNSET CANYON TARGET - ET
MGD: PR FARIA BROTHERS ACTION DEAN SMITH - EX92
305D 29,240M 4.5% 1309F 3.5% 1032P (lbs)



- PropJoe is an outcross sire for the commercial breeder with progeny NOT being able to be full herdbook registered.
- He is a great outcross sire for health, productive life that offers exceptional udders, production and components.

Faria Brothers Prop Joe-ET

USDA Sire Summary 08/19

| Dtrs: 7794 | Herds: 224 |
|------------|-------------|
| Milk | 29 |
| %Rel | 99 |
| Protein | 17lbs 0.08% |
| Fat | 61lbs 0.3% |
| NM\$ | 386 |
| PL | 3 |
| SCC | 2.83 |
| DPR | -2.8 |
| SCR | 2.8 |

Australian Genomic ABV 08/19

| | | | |
|-----------|------|-------|------|
| BPI | 104 | 68 | Rel% |
| HWI | 69 | 62 | Rel% |
| TWI | 134 | 67 | Rel% |
| ASI | 83 | | |
| Milk | -295 | 73 | Rel% |
| Protein | 1kg | 0.24% | |
| Fat | 25kg | 0.77% | |
| Type | 105 | | |
| Udder | 102 | | |
| SCC | 133 | 81 | Rel% |
| Fertility | 96 | 79 | Rel% |

USDA Genomic Type Linear 08/19

| JPI: 107 | PTAT: 1.60 | JUI: 20.50 | |
|-------------------|----------------|------------|-------|
| No. Dtrs: 555 | No. Herds: 101 | Rel% 98 | |
| Linear | -2 | 0 | 2 |
| Stature | | | 1.00 |
| Strength | | | 0.50 |
| Dairy Form | | | 0.90 |
| Thurl Width | | | -0.10 |
| Rump Angle | | | 0.60 |
| Legs-Side View | | | -0.20 |
| Foot Angle | | | 0.90 |
| Fore Udder Att. | | | 1.70 |
| Rear Udder Att. H | | | 0.90 |
| Rear Udder Att. W | | | 0.70 |
| Udder Cleft | | | 0.90 |
| Udder Depth | | | 2.10 |
| Front Teat Place. | | | 0.90 |
| Teat Length | | | 0.50 |

ANTWON {4}

FARIA BROTHERS ANTWON - ET | MARVEL X HEADLINE X DO RIGHT

Bull ID: ANTWON • Nasid Code: 80JJK35 • HB No: 8403011610060



Sire: ALL LYNNS VALENTINO MARVEL
Dam: FARIA BROTHERS HEADLINE JORDAN - VG86

305D 22,740M 4.5% 1021F 3.5% 797P (lbs)
MGS: SCHULTZ RESCUE HEADLINE
MGD: FARIA BROTHERS DO RIGHT DORSEY - EX90
305D 28,730M 3.9% 1121F 3.6% 1027P (lbs)



- Extreme health & fertility sire with +7.0 PL with the great combination of exceptional udders, production & feet & legs.
- Antwon is an outcross sire for the commercial breeders with progeny NOT able to be full herdbook registered.

Faria Brothers Antwon-ET

USDA Sire Summary 08/19

| Dtrs: 1114 | Herds: 66 |
|------------|--------------|
| Milk | 639 |
| %Rel | 99 |
| Protein | 20lbs -0.01% |
| Fat | 5lbs -0.12% |
| NM\$ | 303 |
| PL | 7.0 |
| SCC | 2.89 |
| DPR | 0.5 |
| SCR | N/A |

Australian Genomic ABV 08/19

| | | | |
|-----------|------|--------|------|
| BPI | 67 | 67 | Rel% |
| HWI | 70 | 60 | Rel% |
| TWI | 91 | 65 | Rel% |
| ASI | -9 | | |
| Milk | 378 | 72 | Rel% |
| Protein | 6kg | -0.15% | |
| Fat | -6kg | -0.50% | |
| Type | 102 | | |
| Udder | 102 | | |
| SCC | 142 | 79 | Rel% |
| Fertility | 101 | 71 | Rel% |

USDA Genomic Type Linear 08/19

| JPI: 93 | PTAT: 1.30 | | | JUI: 20.6 |
|-------------------|---------------|-------------|-------------|-----------|
| No. Dtrs: 63 | No. Herds: 21 | | | Rel% 88 |
| Linear | -2 | 0 | 2 | |
| Stature | | | <div></div> | 1.10 |
| Strength | | <div></div> | | -0.10 |
| Dairy Form | | | | 0.00 |
| Thurl Width | | <div></div> | | 0.60 |
| Rump Angle | | <div></div> | | 0.40 |
| Legs-Side View | | <div></div> | | -0.60 |
| Foot Angle | | <div></div> | | 0.20 |
| Fore Udder Att. | | | <div></div> | 1.90 |
| Rear Udder Att. H | | | <div></div> | 1.00 |
| Rear Udder Att. W | | | | 0.00 |
| Udder Cleft | | <div></div> | | 0.10 |
| Udder Depth | | | <div></div> | 2.60 |
| Front Teat Place. | | <div></div> | | 0.30 |
| Teat Length | | <div></div> | | -0.10 |

ST TUX

SEXING PILGRIM TUX 60328 - ET | PILGRIM X MAGNUM X T-BONE

Bull ID: **STTUX** • Nasid Code: **80JJL43** • HB No: **8403010364075**



SexedULTRA4M

Sire: **CAL-MART MEDALIST PILGRIM**
Dam: **JCJ MAGNUM 22831**

MGS: **WILSONVIEW JEVON MAGNUM**
MGD: **JCJ TBONE 19243**



- One of the breeds BEST health & fertility sires with an incredible +4.2 DPR.
- He also offers an outcross pedigree with an ideal production proof, with a Productive Life of +5.1.

Dam: **JCJ Magnum 22831**

USDA Sire Summary 08/19

| Dtrs: 107 | Herds: 16 |
|-----------|-------------|
| Milk | 970 |
| %Rel | 92 |
| Protein | 40lbs 0.02% |
| Fat | 67lbs 0.10% |
| NM\$ | 606 |
| PL | 5.1 |
| SCC | 3.07 |
| DPR | 4.2 |
| SCR | N/A |

USDA Genomic Type Linear 08/19

| JPI: 177 | PTAT: 0.90 | JUI: 6.1 | |
|-------------------|--------------|-------------|------|
| No. Dtrs: 35 | No. Herds: 6 | Rel% 87 | |
| Linear | -2 | 0 | 2 |
| Stature | | <div></div> | 0.20 |
| Strength | | <div></div> | 0.50 |
| Dairy Form | | <div></div> | 0.60 |
| Thurl Width | | <div></div> | 0.20 |
| Rump Angle | | <div></div> | 0.30 |
| Legs-Side View | | <div></div> | 0.40 |
| Foot Angle | | <div></div> | 0.20 |
| Fore Udder Att. | | <div></div> | 0.90 |
| Rear Udder Att. H | | <div></div> | 0.20 |
| Rear Udder Att. W | | <div></div> | 0.40 |
| Udder Cleft | | <div></div> | 0.60 |
| Udder Depth | | <div></div> | 0.10 |
| Front Teat Place. | | <div></div> | 0.50 |
| Teat Length | | <div></div> | 0.30 |

CR DIVINE

SUNSET CANYON DIVINE - ET | VALENTINO X RESTORE X IMPLUS

Bull ID: **CRDIVINE** • Nasid Code: **80JJG31** • HB No: **USA117335721**



Sire: **ALL LYNN'S LOUIE VALENTINO - ET**
Dam: **PEARLMONT RESTORE DIXIE - ET EX90**
365D 22,546M 4.3% 975F 3.5% 789P (lbs)
MGS: **SCHULTZ DUDLEY RESTORE - ET**
MGD: **PEARLMONT IMPLUS DAFFY - EX90**
305D 18,560M 5.0% 932F 3.8% 707P (lbs)



- With over 1200 milking daughters in the US & an excellent Australian BPI with type and udders a feature in the GBG.
- His daughters that are milking in Australia are showing the strength of his cow family.

MGD: **Pearlmount Impuls Daffy EX90**

USDA Sire Summary 08/19

| Dtrs: 1315 | Herds: 159 |
|------------|--------------|
| Milk | 1053 |
| %Rel | 99 |
| Protein | 30lbs -0.04% |
| Fat | 17lbs -0.16% |
| NM\$ | 299 |
| PL | 5.1 |
| SCC | 2.95 |
| DPR | -2.7 |
| SCR | N/A |

USDA Genomic Type Linear 08/19

| JPI: 86 | PTAT: 0.80 | | JUI: 10.8 |
|-------------------|---------------|-------------|-----------|
| No. Dtrs: 296 | No. Herds: 73 | | Rel% 97 |
| Linear | -2 | 0 | 2 |
| Stature | | <div></div> | 0.50 |
| Strength | | <div></div> | 0.00 |
| Dairy Form | | <div></div> | 0.20 |
| Thurl Width | | <div></div> | 2.20 |
| Rump Angle | | <div></div> | -0.20 |
| Legs-Side View | | <div></div> | 0.10 |
| Foot Angle | | <div></div> | -0.30 |
| Fore Udder Att. | | <div></div> | 0.30 |
| Rear Udder Att. H | | <div></div> | 0.50 |
| Rear Udder Att. W | | <div></div> | 0.20 |
| Udder Cleft | | <div></div> | 0.80 |
| Udder Depth | | <div></div> | 0.50 |
| Front Teat Place. | | <div></div> | 1.30 |
| Teat Length | | <div></div> | -1.00 |

Australian Genomic ABV 08/19

| | | |
|-----------|------|---------|
| BPI | 182 | 72 Rel% |
| HWI | 156 | 67 Rel% |
| TWI | 212 | 72 Rel% |
| ASI | 91 | |
| Milk | 795 | 77 Rel% |
| Protein | 20kg | -0.14% |
| Fat | 17kg | -0.50% |
| Type | 106 | |
| Udder | 108 | |
| SCC | 139 | 82 Rel% |
| Fertility | 96 | 80 Rel% |

CR DIVIDEND

SUNSET CANYON DIVIDEND - ET | VALENTINO X RESTORE X IMPLUS

Bull ID: **CRDIVIDEND** • Nasid Code: **80JJG42** • HB No: **USA117335691**



Sire: **ALL LYNN'S LOUIE VALENTINO - ET**
Dam: **PEARLMONT RESTORE DIXIE - ET EX90**
365D 22,546M 4.3% 975F 3.5% 789P (lbs)
MGS: **SCHULTZ DUDLEY RESTORE - ET**
MGD: **PEARLMONT IMPULS DAFFY - EX90**
305D 18,560M 5.0% 932F 3.8% 707P (lbs)



- Dividend is a bull that excels in both the JPI & BPI indexes which has seen him feature at the top of the USA & Australian rankings.
- Backed by 3 generations of EX & over 3100 daughters now milking in the US.

Brookbora Golden Gem 75

USDA Sire Summary 08/19

| Dtrs: 4031 | Herds: 460 |
|------------|--------------|
| Milk | 1036 |
| %Rel | 99 |
| Protein | 35lbs -0.01% |
| Fat | 39lbs -0.05% |
| NM\$ | 468 |
| PL | 6.6 |
| SCC | 2.85 |
| DPR | -3.3 |
| SCR | N/A |

USDA Genomic Type Linear 08/19

| JPI: 136 | PTAT: 1.80 | JUI: 17.7 | |
|-------------------|----------------|-----------|-------|
| No. Dtrs: 1467 | No. Herds: 213 | Rel% 99 | |
| Linear | -2 | 0 | 2 |
| Stature | | | 1.00 |
| Strength | | | -0.80 |
| Dairy Form | | | 1.70 |
| Thurl Width | | | 0.90 |
| Rump Angle | | | -0.40 |
| Legs-Side View | | | -0.20 |
| Foot Angle | | | 0.80 |
| Fore Udder Att. | | | 0.80 |
| Rear Udder Att. H | | | 1.50 |
| Rear Udder Att. W | | | 1.30 |
| Udder Cleft | | | 1.00 |
| Udder Depth | | | 1.10 |
| Front Teat Place. | | | 1.00 |
| Teat Length | | | -0.80 |

Australian Genomic ABV 08/19

| | | |
|-----------|------|---------|
| BPI | 171 | 79 Rel% |
| HWI | 147 | 71 Rel% |
| TWI | 218 | 77 Rel% |
| ASI | 90 | |
| Milk | 487 | 88 Rel% |
| Protein | 14kg | -0.05% |
| Fat | 22kg | -0.07% |
| Type | 108 | |
| Udder | 108 | |
| SCC | 154 | 85 Rel% |
| Fertility | 94 | 81 Rel% |

PRIME TEQUILA

Full Name: **TOWER VUE PRIME TEQUILA - ET** • Pedigree: **PRIMETIME X SAMBO X REGAL**
Bull ID: **PRIMETEQUILA** • Nasis Code: **80JJB17** • HB No: **USA114816452**



Arethusia Tequila Vision EX94

- He hails from the great Pleasant Nook herd & his dam is a Lester Sambo that did such a great job in Australia. **THE UNDISPUTED KING OF THE RING.**



Payneside Mac N Cheese VG89-2YR

- The breed has never seen a bull dominate the show ring like Tequila has, winning premier sire at WDE, RWF & IDW consistently year after year.



Edgebrook Tequila Madison EX91

Sire: **GIL-BAR SPARKLER PRIMETIME**
Dam: **PLEASANT NOOK SAMBO TEAL - EX94**
305D 19,040M 5.2% 990F 3.5% 662P (lbs)
MGS: **LESTER SAMBO**
MGD: **PLEASANT NOOK REGAL TEAL - VG87**
305D 17,540M 5.3% 923F 3.5% 615P (lbs)

USDA Sire Summary 08/19

| | | | |
|------------|--------------|-----|------|
| Dtrs: 4793 | Herds: 1400 | NMS | -378 |
| Milk | -1404 | PL | -2.3 |
| %Rel | 99 | SCC | 3.40 |
| Protein | -35lbs 0.08% | DPR | -3.9 |
| Fat | -29lbs 0.21% | SCR | -4.3 |

USDA Genomic Type Linear 08/19

| | | | |
|-------------------|----------------|-----------|-------|
| JPI: -123 | PTAT: 1.80 | JUI: 26.1 | |
| No. Dtrs: 2830 | No. Herds: 849 | Rel% 99 | |
| Linear | -2 | 0 | 2 |
| Stature | | | 3.40 |
| Strength | | | 0.90 |
| Dairy Form | | | 0.90 |
| Thurl Width | | | -0.50 |
| Rump Angle | | | 1.30 |
| Legs-Side View | | | -0.80 |
| Foot Angle | | | 0.50 |
| Fore Udder Att. | | | 2.00 |
| Rear Udder Att. H | | | 1.40 |
| Rear Udder Att. W | | | 0.70 |
| Udder Cleft | | | 0.70 |
| Udder Depth | | | 3.40 |
| Front Teat Place. | | | 1.00 |
| Teat Length | | | 1.60 |

Salvation Tequila Belle 2 EX91 (max)



BUDGET PACK BULLS

\$14+GST PER STRAW MINIMUM 100 STRAWS

CAN BE MADE UP OF ONE BULL OR ANY MULTIPLE OF BULLS – SEMEN AND PACKS AVAILABLE WHILST STOCK LAST



SPIRITUAL



BOSCANYON



SANDBLAST



PERSEUSMAN
Action Daughter



GALAHAD



SHOCKER



MATRIXMAN



CRPLUS

PROTECT YOUR CALVES

from the bitter cold with **CALF COATS!**



- ❖ Available in three sizes
- ❖ Breathable and waterproof with a quilted inner lining
- ❖ Easy to put on and take off –
Velcro closure on the front and buckle leg straps
- ❖ Amish handcrafted in the USA
- ❖ Machine washable

AGRI-GENE PTY LTD

123-125 Tone Road, Wangaratta Victoria 3677

☎ P 03 5722 2666
F 03 5722 2777

✉ info@agrigene.com.au

🌐 www.agrigene.com.au



zoetis

CLARIFIDE ALLOWS INFORMED SELECTION & BREEDING DECISIONS



Select
your best
replacement
animals

Increase
the rate of
genetic gain

Avoid
the expense of
raising genetically
inferior animals

Better allocation
of higher value
or sexed semen

For more information on CLARIFIDE Testing, please contact your local Genetics Professional Sales Representative:
NSW & QLD – Lachlan Ayoub 0437 226 122 | VIC, TAS, SA & WA – Jake Bourne 0419 664 834


CLARIFIDE®

JERSEY

QUICK REFERENCE GUIDE AUSTRALIAN ABV – AUGUST 2019

| Nasis Code | Name | Pedigree | Source | BPI | Rel% | ASI | Prot | Prot% | Milk | Fat | Fat% | Rel% | No. Dtrs | No. Herds | Overall Type | Mam Sys | Rel% | Milk Speed | Temp | Like | SCC | Dtr Fert. |
|---|------------------------------------|-----------------------------------|--------|-----|------|-----|------|--------|------|-----|--------|------|----------|-----------|--------------|---------|------|------------|------|------|-----|-----------|
|  PUBLICAN | White Star Patrick | Bontino X Elton X Valerian | G | 256 | 63 | 201 | 18 | 0.58% | -269 | 29 | 0.83% | 75 | G | G | 106 | 105 | 52 | 104 | 104 | 106 | 97 | 100 |
|  JETFIGHTER | Cairbrae Top Gun | Cairbone X Valentino X Signature | G | 203 | 66 | 139 | 16 | 0.15% | 279 | 30 | 0.28% | 75 | G | G | 110 | 112 | 57 | 100 | 102 | 104 | 129 | 98 |
|  crDIVINE | Sunset Canyon Divine - ET | Valentino X Restore X Implus | I | 182 | 72 | 91 | 20 | -0.14% | 795 | 17 | -0.50% | 77 | 11 | 6 | 106 | 108 | 75 | 104 | 104 | 105 | 139 | 96 |
|  ARAMAC | Brookbora Aramac | Valentino X Tbone X Taranak | G | 173 | 67 | 121 | 15 | 0.28% | 85 | 14 | 0.18% | 77 | G | G | 107 | 109 | 60 | 102 | 105 | 107 | 106 | 97 |
|  crDIVIDEND | Sunset Canyon Dividend - ET | Valentino X Restore X Implus | I | 171 | 79 | 90 | 14 | -0.05% | 487 | 22 | -0.07% | 88 | 37 | 11 | 108 | 108 | 75 | 102 | 102 | 102 | 154 | 94 |
|  MATRIXMAN | Wilsonview Irwin Matrix - ET | Irwin X Tbone X Implus | I | 154 | 71 | 96 | 12 | 0.17% | 109 | 15 | 0.17% | 77 | 10 | 4 | 106 | 105 | 73 | 102 | 105 | 103 | 119 | 97 |
|  WORLDCUP | Co-Op Ad World Cup (5)-ET | Chilli X Marvel X Renegade | G | 152 | 64 | 92 | 7 | 0.33% | -232 | 10 | 0.43% | 72 | G | G | 103 | 103 | 56 | 101 | 102 | 102 | 130 | 101 |
|  PIXSTARP P | Diamond Hill Oliver Pixstar P - ET | Oliver X Chrome X Jace | G | 144 | 61 | 26 | 8 | -0.14% | 417 | 9 | -0.26% | 72 | G | G | 105 | 105 | 51 | 101 | 101 | 104 | 138 | 105 |
|  MINX | Stonyrun Aus Tbone Minx | Tbone X Vanahlem X Larfalo | A | 138 | 68 | 131 | 15 | 0.18% | 200 | 26 | 0.28% | 77 | 1 | 1 | 106 | 104 | 60 | 103 | 105 | 105 | 108 | 94 |
|  bwGALAHAD | BW Galahad - ET | Irwin X BW Legion X Avery | I | 137 | 67 | -13 | -4 | 0.06% | -190 | -4 | 0.11% | 75 | 26 | 7 | 110 | 110 | 68 | 104 | 104 | 105 | 162 | 100 |
|  BONTINO | Cairbrae Bontino | Valentino X Tbone X Alf | A | 121 | 80 | 113 | 12 | 0.36% | -125 | 9 | 0.29% | 93 | 113 | 32 | 110 | 109 | 78 | 105 | 102 | 106 | 96 | 94 |
|  SANDBLAST | Nowell Sandblast | Flowerpower X Admiral X Hermitage | A | 112 | 92 | 108 | 17 | 0.22% | 206 | 5 | -0.11% | 99 | 1300 | 205 | 97 | 100 | 94 | 99 | 103 | 103 | 94 | 100 |
|  CITATION | BW Citation A - ET | Irwin X Centurion X Avery | G | 111 | 73 | 11 | 1 | -0.10% | 173 | 11 | 0.03% | 78 | G | G | 108 | 110 | 73 | 103 | 104 | 105 | 121 | 100 |
|  PROPJOE {3} | Faria Brothers Prop Joe - ET | Hilario X Target X Action | G | 104 | 68 | 83 | 1 | 0.24% | -295 | 25 | 0.77% | 73 | G | G | 105 | 102 | 69 | 101 | 99 | 101 | 133 | 96 |
|  PERSEUSMAN | Ahlem Visionary Perseus 21947 | Visionary X Action X Rocket | G | 104 | 64 | 21 | 3 | 0.04% | 42 | 2 | 0.00% | 75 | G | G | 104 | 106 | 53 | 102 | 102 | 103 | 133 | 100 |
|  BROWNLOW | Dalbora Brax 5097 Brownlow | Brax X Tbone X Implus | A | 95 | 73 | 89 | 5 | 0.28% | -242 | 17 | 0.58% | 86 | 56 | 18 | 101 | 102 | 64 | 100 | 104 | 102 | 114 | 98 |
|  crRONADLO | JX Faria Brothers Ronaldo - ET | Harris X Target X Action | G | 88 | 66 | 114 | 19 | 0.02% | 535 | 20 | -0.17% | 71 | G | G | 104 | 102 | 66 | 100 | 102 | 102 | 135 | 90 |
|  stTUX | Sexing Pilgrim Tux 60328 - ET | Pilgrim X Magnum X Tbone | G | 70 | 59 | 51 | 4 | 0.11% | -41 | 12 | 0.28% | 70 | G | G | 95 | 97 | 41 | 100 | 100 | 101 | 103 | 104 |
|  ANTWON {4} | Faria Brothers Antwon - ET | Marvel X Headline X Do Right | I | 67 | 67 | -9 | 6 | -0.15% | 378 | -6 | -0.50% | 72 | 2 | 1 | 102 | 102 | 60 | 100 | 102 | 102 | 142 | 101 |
|  MAUIMAN | Ahlem Valentino Maui 21838 | Valentino X Headline X Legion | A | 52 | 79 | -56 | -3 | -0.24% | 253 | -8 | -0.40% | 90 | 47 | 16 | 111 | 113 | 72 | 101 | 105 | 106 | 119 | 101 |
|  SPIRITUAL | Riverside Spirit | Avery X Berretta X Malcolm | A | 35 | 93 | -12 | 3 | 0.02% | 74 | -16 | -0.37% | 99 | 3185 | 437 | 102 | 103 | 97 | 99 | 101 | 102 | 107 | 104 |

Source (A) Australian Proven (G) Genomic (I) Interbull  **A2**  **SEXED SEMEN** **P** **POLLED** **PP** **HOMO-POLLED**



 **ST Genetics** *Sexed ULTRA 4M*
4M and SEXEDULTRA are trade marks of AgriGene LLC

Agri-Gene Pty Ltd

123-125 Tone Road, Wangaratta Victoria 3677

Email: info@agrigene.com.au

Ph: 03 5722 2666 Fax: 03 5722 2777

www.agrigene.com.au

JERSEY

QUICK REFERENCE GUIDE USDA – AUGUST 2019

| Nasis Code | Name | Pedigree | JPI | Milk | Fat | Fat% | Prot | Prot% | Rel% | DTRS | HERDS | SCC | PL | DPR | SCR | PTAT | JUI | REL% |
|--|-------------------------------|-------------------------------|-----|------|-----|-------|------|-------|------|-------|-------|------|------|------|------|------|------|------|
|  srTUX | Sexing Pilgrim Tux 60328 - ET | Pilgrim X Magnum X Tbone | 177 | 970 | 67 | 0.10 | 40 | 0.02 | 92 | 107 | 16 | 3.07 | 5.1 | 4.2 | N/A | 0.90 | 6.1 | 87 |
|  WORLD CUP | Co-Op Ad World Cup (5)-ET | Chili X Marvel X Renegade | 161 | 458 | 43 | 0.11 | 37 | 0.10 | 97 | 414 | 41 | 2.95 | 5.9 | 0.7 | -2.2 | 1.20 | 20.3 | 86 |
|  CRAZEDOC | Ahlem Craze Doc 24061-et | Craze X Plus X Valentino | 150 | 929 | 41 | -0.02 | 32 | -0.01 | 73 | G | G | 2.93 | 5.7 | 1.3 | N/A | 2.50 | 28.1 | 75 |
|  AcrCHICAGO | Ahlem Bancroft Chicago 23929 | Bancroft X Viper X Legal | 146 | 1342 | 48 | -0.07 | 48 | 0 | 76 | G | G | 3 | 2.4 | -2.9 | -2.7 | 2.80 | 28.3 | 77 |
|  MASTERDEGREE | Yosemite Kw Masters Degree-ET | Kwynn X Masters X Plus | 140 | 478 | 48 | 0.13 | 29 | 0.06 | 76 | G | G | 2.87 | 2.9 | 1.1 | N/A | 2.10 | 26.1 | 77 |
|  crDIVIDEND | Sunset Canyon Dividend - ET | Valentino X Restore X Implus | 136 | 1036 | 39 | -0.05 | 35 | -0.01 | 99 | 4031 | 460 | 2.85 | 6.6 | -3.3 | N/A | 1.80 | 17.7 | 99 |
|  PIXSTAR P | Diamond Hill Pixstar P - ET | Oliver X Chrome X Critic P | 124 | 717 | 47 | 0.06 | 29 | 0.02 | 76 | G | G | 2.89 | 3.5 | -0.9 | N/A | 1.80 | 20.8 | 77 |
|  PROPJOE {3} | Faria Brothers Prop Joe - ET | Hilario X Target X Action | 107 | 29 | 61 | 0.03 | 17 | 0.08 | 99 | 7794 | 224 | 2.83 | 3.0 | -2.8 | 2.8 | 1.60 | 20.5 | 98 |
|  ANTWON {4} | Faria Brothers Antwon - ET | Marvel Headline X Do Right | 93 | 639 | 5 | -0.12 | 20 | -0.01 | 99 | 1114 | 66 | 2.89 | 7 | 0.5 | N/A | 1.3 | 20.6 | 88 |
|  CITATION | BW Citation A - ET | Irwin X Centurion X Avery | 90 | 954 | 22 | 0.03 | 10 | -0.01 | 99 | 965 | 186 | 3.04 | 5.4 | -0.2 | -1.0 | 1.70 | 27.1 | 98 |
|  crDIVINE | Sunset Canyon Divine - ET | Valentino X Restore X Implus | 86 | 1053 | 17 | -0.16 | 30 | -0.04 | 99 | 1315 | 159 | 2.95 | 5.1 | -2.7 | N/A | 0.80 | 10.8 | 97 |
|  BWGALAHAD | BW Galahad - ET | Irwin X BW Legion X Avery | 86 | 30 | 5 | 0.02 | 2 | 0 | 94 | 167 | 29 | 2.71 | 6.4 | 0.2 | N/A | 1.8 | 30.4 | 91 |
|  PERSEUSMAN | Ahlem Visionary Perseus 21947 | Visonary X Action X Rocket | 83 | 110 | 8 | 0.01 | 8 | 0.02 | 88 | 32 | 6 | 2.89 | 3.2 | 0.1 | N/A | 2.0 | 27.1 | 86 |
|  crPLUS | Sweetie Plus latolas Bold | latola X Artist X Winnix | 75 | 1429 | 52 | -0.07 | 47 | -0.02 | 99 | 11214 | 941 | 3.07 | -1.6 | -1.8 | N/A | 1.60 | 12.1 | 99 |
|  MATRIXMAN | Wilsonview Irwin Matrix - ET | Irwin X Tbone X Implus | 64 | 150 | 29 | 0.11 | 15 | 0.05 | 98 | 777 | 61 | 3.12 | 1.8 | -1.9 | N/A | 1.10 | 18.5 | 98 |
|  MAUIMAN | Ahlem Valentino Maui 21838 | Valentino X Headline X Legion | 19 | 273 | -15 | -0.14 | -5 | -0.07 | 99 | 1429 | 137 | 3.10 | 4.3 | -0.1 | N/A | 1.90 | 30.6 | 98 |

 A2  SEXED SEMEN  P  POLLED  PP  HOMO - POLLED



 ST Genetics  Sexed ULTRA 4M
4M and SEXEDULTRA are trade marks of Trigen LLC

Agri-Gene Pty Ltd

123-125 Tone Road, Wangaratta Victoria 3677
Ph: 03 5722 2666 Fax: 03 5722 2777 Email: info@agrigene.com.au www.agrigene.com.au

Gorbro BT Sunstorm Supreme

SUNSUPREME

ISPingerly X Absolute Red

In 2015 & 2017 his dam Sunstorm took out Grand Champion Illawarra and Best Udder of the Illawarra breed at IDW. In 2015 she became the only Illawarra to win Supreme Champion Cow at IDW.

Sunstorm is a cow that is admired by breeders from all breeds; for her balance, incredible udder and great dairy strength. Sunsupreme is a great balanced bull and is a traditional 95% in colour.



Photo: Bradley Cullen

ILLAWARRA

Glenbrook Queens Prince

GERSHOM

Rodway Moses x Jordan Red



Exciting new release Illawarra sire who is out of the highest classified Illawarra cow in the breed at EX94-3E. Llandoverly Jordans Queen EX94-3E also has the power of production behind her. Gershom offers an outcross alternative to current genetics which dominate the breed.

Springvale Theo

THEO

Treeton Pingerly X Venvale Prudino



Theo is backed by three generations of dams with more than 50,000 litres lifetime. His dam, Thelma 49 VG88, is a standout in the Springvale herd, with an average PI of 144. With EX92-3E and EX90 cows behind her, you can use Theo with a great deal of confidence.

Myrtleholme Hunt

HUNT

Thorpe x Monarch



HUNT is sired by a 'Myrtleholme Thorpe' son from Myrtleholme Ailsa 14 EX91, a cow that has won the 2014 'Real Australian' and All-World photo competitions and is also a production leader.

Eagle Park Dwayne

DWAYNE

Maxima x Absolute



Eagle Park Dwayne is sired by 'Altamaxima' from the great Sunny View Duchess cow family. Dwayne's grand-dam is the much admired Sunny View Duchess – EX92 who has been Champion Cow at Brisbane Royal Show in 2011, 2012 & 2015.



Agri-Gene Pty Ltd

123-125 Tone Road, Wangaratta Victoria 3677



Ph: 03 5722 2666 Email: info@agrigene.com.au www.agrigene.com.au

For a full list of available Illawarra sires please go to our website: www.agrigene.com.au

Hunnington Famous

FAMOUS

Prime X BBK Easlad

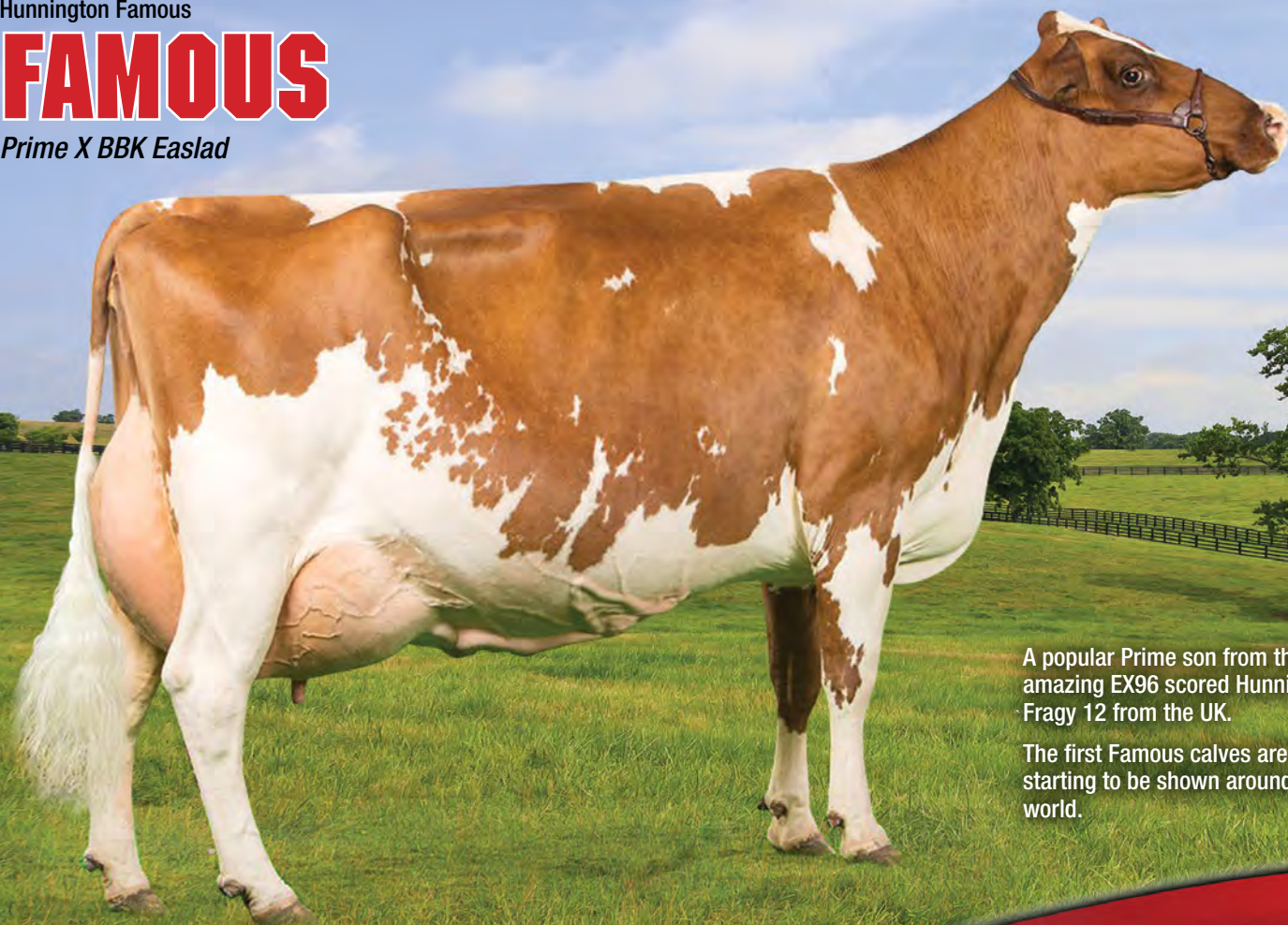


Photo: Jane Steel

A popular Prime son from the amazing EX96 scored Hunnington Fragy 12 from the UK.

The first Famous calves are now starting to be shown around the world.

AYRSHIRE

7 OAKS BURDETTE ALASKA

BURLASKA

Burdette x Phoenix



ALASKA is sired by show type sensation, 'Burdette', he hails from one of the breeds highest CPI cows, 'Van-De Phoenix Corky Arizona – VG87'. Alaska boasts great numbers for both type and production with positive components.

De-La Plaine B-King

B-KING

Virgile X Burdette X Modem



With generations of All American and All Canadian dams he of the hottest young sires to hit Australia. His dam, 'Bling' VG89 and Granddam 'Ping' EX94 are house hold names across North America. His faultless type and production proof comes at no surprise with his great cow family.

WHITECROFT NECTAR

NECTAR

Primetime X Jelyca Oblique



NECTAR is a newly released sire that is backed by 5 generations of EX classified cows.

He is a great all-round sire to use in your herd. He combines great type with fertility and production.



Agri-Gene Pty Ltd

123-125 Tone Road, Wangaratta Victoria 3677



Ph: 03 5722 2666 Email: info@agrigene.com.au www.agrigene.com.au

For a full list of available Ayrshire sires please go to our website: www.agrigene.com.au

CADENCE

Brookings X Wonderment

Cadence is the best proven Brown Swiss bull to come out of the states in recent times.
He is among the breeds best for Type, Milk, NMS, Protein & Fat.
Available in both sexed & conventional semen.



Sarah Damron

BROWN SWISS

NICE GP

Fact X Calvin



NICE GP is a new release sire that will be attractive for all breeders looking for a good combination of type, production, functionality and udder health score and daughter fertility. His great-granddam is one of VIGOR's most famous daughters and has multiple production records. He has just won the Chatillon 2018 Young Cow Championship!

DAVENPORT

Carter X Vigor



All the best traits of Carter and Vigor combined into one package. Davenport is a proven leader for udders, great calving ease with solid milk and fat.

CARTER

TD X Wonderment



Carter is breaking records for being the #1 Type bull for nearly 4 years. He won Premier Sire of the Heifer Show at the World Dairy Expo 2018.
He boasts high milk production and type!



Agri-Gene Pty Ltd

123-125 Tone Road, Wangaratta Victoria 3677



Ph: 03 5722 2666 Email: info@agrigene.com.au www.agrigene.com.au

For a full list of available Brown Swiss sires please go to our website: www.agrigene.com.au

Dairyman Novak Brogdon
BROGDON

Novak x Pistol



Photo: Kathy DeBruin

An exciting new release A2/A2 sire available in both conventional and sexed ultra 4M semen. His Dam is the famous ROLLING PRAIRIE BELLA BLUE EX-95 (EX-95 Mammary) with two back to back yields in excess of 15,500kgs. She is one of the most complete Guernsey cows of all-time, her last classification gave her max scores for strength, body depth and rear udder.

GUERNSEY

GILBERT BELLMAN
BELLMAN
 Legend X BosGeo



Bellman's maternal granddam is a full sister to Sunny Valley Tiller Bell EX90 and Tiller Bess EX both are multiple Senior Champions at Brisbane Royal. His dam boasts production and fat. Bellman is bred at the Gilbert's farm in WA. This herd and cow family are no stranger to the Guernsey breed.

GOLDEN GATE JUDGMENT KNIGHT
KOALASKNIGHT
 Judgment x Thomas



KOALASKNIGHT is an exciting young A2/A2 'Judgment' son from the one and only Queen of the Breed, 'Florando SD Koala-EX94'.

Lang Haven Alstar Navarro
NAVARRO
 Alstar x Les



NAVARRO hails from the great Nicolette Family. He has what breeders are asking for – body depth, great feet & legs, fore udder and rear udders. Navarro will sire extreme health traits.



Agri-Gene Pty Ltd

123-125 Tone Road, Wangaratta Victoria 3677



Ph: 03 5722 2666 Email: info@agrigene.com.au www.agrigene.com.au

For a full list of available Guernsey sires please go to our website: www.agrigene.com.au

DAIRY SHORTHORN

Bushmills Jazz

BUSHMILLS JAZZ

Churchroyd Victor EX96 X Marleycote Rampage



Photo: Jane Steel

His Dam, Marleycote Princess Jill 31 EX95 is one of the highest classified and highest production cows in the breed. She also has a remarkable number of show titles to her name. Jazz is a great all round sire and is backed by 5 generations of VG & EX cows.

RED BREEDS

...from around the World

ILLAWARRA

Blackwood Park Butternut

PRIDESBUTTER

Pride prophet x Royal Treble



Blackwood Park Butternut is a popular roan 'Prides Prophet' son from the much admired 'Buttercup' cow family backed by generations of VG cows. His dam, 'Blackwood Park Buttercup 225 - VG86' breaking the National Mature Fat and Protein record, his grand-dam has also set National Records.

NORMANDE

Manizel

MANIZEL

Jibraltar X Finnois



New A2/A2 sire high on the ISU index at 144, high milk and solids. A powerful body on athletic feet & legs with easy calvings. Manizel's dam, Hachizelle has ranked in the top 10 of the best indexed cows.

AMERICAN MILKING SHORTHORN

Circle B A Lucky Strike - PP

LUCKYSTRIKE PP

Abner P X Diamond Jack



Luckystrike PP is a homo-poll'd & A2/A2 sire that offers excellent high production family traits. He is an outcross sire and available in both sexed ultra 4M and conventional semen



Agri-Gene Pty Ltd

123-125 Tone Road, Wangaratta Victoria 3677



Ph: 03 5722 2666 Email: info@agrigene.com.au www.agrigene.com.au

For a full list of available Red Breed sires please go to our website: www.agrigene.com.au

AGRI-VET

FERTILITY PLUS®

Success is the Answer – Increase Your Fertility

THE PROOF IS IN THE RESULTS IN DAIRY & BEEF HERDS THROUGHOUT AUSTRALIA



A specially designed, cost effective, specialized, unique, waterproof mineral and vitamin including a higher content of essential elements, Selenium and Magnesium to supplement as a loose mix or through mineral dispensers to enhance the performance of all classes of cattle.

COMPARE THE ANALYSIS - FERTILITY PLUS

- ❑ Increases Fertility in both Dairy & Beef Breeds
- ❑ Improves Weight Gain & Maturity in Dairy & Beef Young Stock
- ❑ Assists Grass Tetany and Metabolic Conditions
- ❑ Self Limiting - Balancing Mineral Requirements
- ❑ Unique Waterproofing Process
- ❑ Improves your profits - More Cows in Calf
- ❑ Cost Effective 12-19 Cents Per Cow Per Day
- ❑ Increases Milk Yields - Lowers Somatic Cell Counts
- ❑ Can be fed through Feed Systems at 30 Grams Per Cow Per Milking

Fertility Plus is readily available through:

All AI Resellers, Murray Goulburn Trading stores, Landmark Stores and all leading Rural Stores throughout Australia.

Agri-Gene Pty Ltd

123-125 Tone Road, Wangaratta Victoria 3677

Ph: 03 5722 2666 Fax: 03 5722 2777

Email: info@agrigene.com.au | www.agrigene.com.au



HOLSTEIN BPI PACK

SAVE UP TO \$1200

CHAIRMAN

Director x Mardi Gras



+326 BPI
+110 Daughter Fertility
+104 Calving Ease

DOGE

Duke x Silver



+320 BPI
+106 Type & udders
+112 Survival

PLEXUS

Frazzled x Draco



+364 BPI
+113 Survival
+110 Daughter fertility

SUPERGLOW

Superhero x Supersire



+327 BPI
A2/A2
Positive Milk
and Components

BPI PACK

100 Straws

at **\$23^{+GST}** per straw

★ ★ ★

Volume can be made up of
one or any multiple bulls

SUREROZ

Superhero x Delta



+328 BPI
+107 Type & Udders
+112 Daughter Fertility

Contact your local Agri-Gene representative, our office or your local reseller.



Agri-Gene Pty Ltd

Ph: 03 5722 2666 Fax: 03 5722 2777

Email: info@agrigen.com.au www.agrigen.com.au





BEEF UP *your profit margins...*

With recent advancements in Genomic testing and Sexed Ultra 4M semen, it is now easier than ever to maximise farm profits by using varying semen strategies combining both sexed and conventional Dairy semen with Beef semen.

Using sexed semen over your best females will result in higher quality replacements and alternatively a beef-on-dairy program over your bottom end will result in maximising your revenue from the total number of calves born on the dairy.

Talk to Agri-Gene about Genex's Calf Math program and our range of proven calving ease beef sires from all beef breeds.

ANGUS



PATHFINDER COMPLETE K22

BRAHMAN



JDH SIR JEROME MANSO 224/4

CHAROLAIS EXCELLENCE



FARENNE

POLL HEREFORD



BOYD MASTERPIECE 0220

INRA



HARIBO

LIMOUSIN



POSTHAVEN P ZANSIBAR – *HP

MURRAY GEY



TARLINA COOMUNGA C57

SPECKLE PARK



HANGING ROCK HALDOR

WAGYU



GOORAMBAT TERUTANI F146

... Breed the bottom to **BEEF**

Your No. 1 Dairy Source



**IMPORTING AND EXPORTING ELITE
GENETICS THROUGHOUT THE WORLD**

AGRI-GENE DAIRY CONSULTANTS

| | |
|------------------|--------------|
| Kim Coleman | 0407 299 200 |
| Anthony Coombes | 0498 956 233 |
| John Dickinson | 0438 299 203 |
| Brad Gavenlock | 0437 299 205 |
| Robert Hanegraaf | 0407 690 056 |
| Graham Heaver | 0437 299 209 |
| Chris McIlroy | 0408 229 316 |
| Rob Onley | 0429 930 401 |

Agri-Gene P/L

123-125 Tone Road, Wangaratta Victoria 3677

Ph: 03 5722 2666

Email: info@agrigene.com.au

www.agrigene.com.au

