

2019 SIRE DIRECTORY

# HOLSTEIN SPRING UPDATE





**Agri-Gene**  
*Your No. 1 Dairy Source*

Specialists in Superior Genetics



# HOLSTEIN

	NASIS CODE	SOURCE	BPI	Rel%	ASI	Prt	Prt%	Milk	Fat	Fat%	No. Dtrs	No. Herds	Overall Type	MS	Rel%	Milk Speed	Temp	Like	Calv. Ease	SCC	Dtr. Fert.
	PLEXUS	G	364	65	190	28	0.21	630	33	0.09	G	G	103	105	55	100	104	106	101	169	110
	NACASH	G	362	66	199	21	0.27	235	44	0.46	G	G	103	104	57	102	104	106	101	171	108
	SUREROZ	G	328	66	124	23	0.01	825	27	-0.12	G	G	107	107	56	102	103	105	101	160	112
	DELISHDION	I	327	75	158	17	0.19	277	37	0.36	1599	106	101	106	75	103	103	106	103	175	106
	SUPERGLOW	G	327	67	192	29	0.3	495	22	0.02	G	G	104	101	59	100	103	104	100	155	109
	CHAIRMAN	G	326	66	171	17	0.24	146	40	0.48	G	G	100	104	57	102	102	104	104	159	110
	DOGE	G	320	67	174	15	0.18	203	51	0.61	G	G	106	106	60	103	103	106	101	158	106
	JEDIFY	G	310	67	116	16	0.23	147	11	0.07	G	G	98	99	59	102	102	104	103	161	114
	DELISHDELTA	I	310	75	156	24	-0.04	964	49	0.12	8069	556	107	110	78	104	101	106	104	146	106
	POINTP P	G	309	69	122	18	0.16	350	18	0.05	G	G	101	106	66	103	102	104	104	149	111
	ADLONP P	G	308	65	142	24	0	614	23	-0.05	G	G	105	106	54	102	101	104	101	153	110
	CRHANDLE	G	305	67	183	21	0.18	449	44	0.36	G	G	103	105	62	102	103	107	102	172	104
	CRHEALER	G	303	66	204	20	0.33	77	42	0.56	G	G	98	101	56	102	102	105	102	156	106
	BLOWTORCH	I	299	71	142	21	0.13	528	28	0.08	328	85	99	102	63	102	102	104	102	175	110
	SKIPPY	G	296	66	149	18	0.15	360	35	0.28	G	G	101	103	57	103	102	105	101	161	107
	STGNOLAN	G	294	67	143	25	0.05	851	29	-0.11	G	G	100	106	60	102	103	105	101	160	109
	FLAMER	I	291	74	187	30	0.21	699	29	-0.02	684	51	103	106	73	103	103	106	101	132	106
	BERRYBLAK	G	289	66	134	14	0.23	88	25	0.30	G	G	99	99	57	102	101	103	103	165	111
	STTWISTER	G	285	66	106	13	0.08	342	27	0.17	G	G	102	109	56	101	102	104	102	168	110
	STNEXUS	G	279	67	112	20	0.03	679	24	-0.07	G	G	99	104	59	102	104	105	101	163	111
	SCORPION	G	277	66	132	22	0.18	458	14	-0.08	G	G	103	104	57	102	102	104	102	155	107
	GATEDANCER	I	277	73	174	26	0.13	695	37	0.10	720	152	104	109	74	101	101	104	102	128	103
	STPANTHER	G	277	65	143	18	0.19	292	26	0.2	G	G	101	104	53	98	102	104	102	171	106
	ZEPHIR	G	270	66	129	24	0.08	734	20	-0.17	G	G	99	103	58	100	104	105	103	168	107
	AGRONAUT	G	270	68	120	10	0.13	127	35	0.43	G	G	105	109	63	101	102	105	103	173	102
	NIGHTTIME	G	267	69	121	20	0.09	566	23	-0.02	G	G	100	105	65	102	99	103	101	185	106
	STRAPID	G	250	65	98	16	-0.02	624	28	0.02	G	G	100	105	54	104	103	106	102	164	105
	BENTLEY	I	249	74	73	10	0.13	100	9	0.07	448	190	106	109	76	101	103	104	103	187	105
	EDGRUBICON	A	241	82	124	9	0.01	313	51	0.55	54	17	107	109	77	101	102	108	102	172	100
	STNOBLE	G	241	68	105	20	-0.03	809	25	-0.13	G	G	102	108	61	102	100	103	97	152	107
	STGRANGER	G	240	66	34	14	-0.08	671	2	-0.38	G	G	102	103	58	100	102	105	105	175	113
	CHILIPEPPER P	I	228	69	109	24	0.11	684	5	-0.35	32	17	101	102	64	100	103	104	102	147	106
	1STGRADE	G	225	69	62	10	-0.08	692	18	-0.07	G	G	103	108	64	103	102	105	100	167	106
	STGHISTORY	G	225	67	83	19	0.07	592	5	-0.30	G	G	107	108	61	101	103	105	102	162	103
	CAHILL	G	224	68	56	22	-0.14	1071	8	-0.54	G	G	102	103	61	100	102	105	101	177	109
	MECPP PP	G	223	65	130	18	0.21	269	17	0.08	G	G	100	101	53	101	100	101	101	151	104
	AGRJUDGEMENT	G	223	22	124	19	0.02	650	33	0.08	G	G	102	104	58	102	103	N/A	102	141	103
	DELTALAMBDA	G	221	68	102	15	-0.05	672	36	0.10	G	G	103	108	62	103	102	105	102	156	102
	CRRAY	I	220	69	102	18	0.03	608	21	-0.08	131	38	101	104	60	99	104	105	102	143	107
	STCHIEF	G	216	69	63	15	-0.08	706	18	-0.18	G	G	104	107	66	101	102	104	101	178	105
	DILLYDILY	G	216	64	114	19	0.01	668	30	0.02	G	G	99	107	52	103	101	104	100	145	104
	RUSSIAN	I	215	74	97	15	-0.03	627	31	0.06	762	60	98	108	73	103	103	105	104	154	105
	NICHE	G	212	68	85	14	-0.06	627	30	0.05	G	G	100	107	62	103	101	105	102	176	103
	RORY	G	207	66	129	14	0.07	404	39	0.31	G	G	101	104	55	102	103	105	103	138	103
	CINCO	G	196	67	66	16	-0.04	663	13	-0.22	G	G	102	103	61	102	102	104	101	155	108
	CARIBBEAN	G	191	21	90	11	0.03	332	28	0.2	G	G	101	103	60	102	102	N/A	100	137	104
	MACNUT-PP PP	G	187	65	75	15	0	573	15	-0.14	G	G	102	104	56	101	99	103	100	146	105
	CBCHILL	G	161	69	38	10	-0.05	451	9	-0.14	G	G	102	107	66	101	103	105	103	172	103
Sexed	CBUNSTOPABUL	G	130	66	-6	3	-0.09	268	2	-0.14	G	G	102	108	57	100	100	103	100	144	110
	BSMASTER	G	125	32	36	5	0.04	102	7	0.04	G	G	106	107	53	100	102	104	100	150	101

Source (A) Australian Proven (G) Genomic (I) Interbull  **A2**  **SEXED**  **SEMEN**  **P**  **POLLED**  **PP**  **HOMO-POLLED** **STgenetics**  **SexedULTRA 4M**, SEXEDULTRA 4M, and SEXEDULTRA are trade marks of Ingenium LLC

## LARGE ENOUGH TO SERVICE – SMALL ENOUGH TO CARE

Limitation of liability: Agri-Gene, its employees and agents, cannot guarantee the conception rate or production to be obtained in connection with the use or recommended techniques of its product, namely semen and embryos. Any person relying on information setout herein does so entirely at their own risk and no claims will be entered into notwithstanding any negligence or omission on the part of Agri-Gene. Prices quoted are business to business transactions and do not include GST.



## Facebook

Follow us on Facebook for the latest news on new dairy and beef sires along with new products and services.  
[www.facebook.com/agrigene](http://www.facebook.com/agrigene)

# HOLSTEIN

	NASIS CODE	TPI	NM\$	Milk	Fat	Fat%	Prt	Prt%	Rel%	SCC	PL	DPR	SCR	CE	PTAT	Udder Comp	No. Dtrs	No. Herds
	DOGE	2794	994	1545	129	0.25	70	0.08	79	2.77	5.6	-0.4	N/A	7.8	1.75	1.82	G	G
	NACASH	2785	904	813	93	0.23	55	0.11	77	2.63	6.4	1.5	N/A	6.8	2.36	2.44	G	G
	DILLYDILLY	2783	922	1839	82	0.05	69	0.04	76	2.82	6.9	1.5	N/A	8.2	2.1	2.24	G	G
	stNOBLE	2768	894	1662	76	0.05	56	0.02	80	2.57	7.3	1.7	N/A	8.9	2.17	2.95	G	G
	stRAPID	2760	887	1629	95	0.12	64	0.05	78	2.82	5.5	-0.9	N/A	8	3.02	2.55	G	G
	EdgRUBICON	2755	959	1262	120	0.26	56	0.06	99	2.79	6.2	-1.6	N/A	7.3	2.13	1.68	4969	920
	AGRJUDGEMENT	2745	902	1540	89	0.11	61	0.05	76	2.69	6.3	0.5	N/A	7	2.28	2.5	G	G
	CARIBBEAN	2730	856	1652	65	0.01	45	-0.02	77	2.84	7.8	3.7	N/A	6.5	2.48	2.65	G	G
	stPANTHER	2727	865	1344	68	0.06	63	0.08	77	2.53	7.8	0.6	N/A	5.8	2.05	2.44	G	G
	NICHE	2718	876	1440	83	0.1	55	0.04	79	2.75	7	0.1	N/A	7.8	2.2	2.42	G	G
	crHANDLE	2714	856	1276	117	0.25	59	0.07	81	2.89	4.1	0.4	1.3	8.9	2.29	1.96	G	G
	stTWISTER	2711	815	425	78	0.23	37	0.09	79	2.7	6.8	2.5	N/A	7.4	2.95	3.23	G	G
	stGNOLAN	2704	874	1599	70	0.04	61	0.04	80	2.67	8.1	1.7	N/A	6.3	2.12	1.85	G	G
	DELISHDELTA	2698	909	1613	88	0.1	54	0.02	99	2.9	7.4	0.4	N/A	5.7	2.12	2.82	8069	556
	AGRONAUT	2696	874	295	82	0.26	37	0.1	80	2.54	7.9	1.4	N/A	6.5	1.77	2.22	G	G
	stNEXUS	2672	829	1222	68	0.08	56	0.07	80	2.7	7.7	2.8	N/A	7.5	1.8	1.84	G	G
	PLEXUS	2672	877	1661	92	0.11	67	0.06	80	2.65	6.3	-0.9	N/A	8.3	1.74	2.1	G	G
	ROZUME	2663	802	1090	70	0.1	40	0.02	77	2.68	6.8	-0.3	N/A	6.9	2.89	3.71	G	G
	RORY	2662	927	1572	102	0.15	62	0.05	80	2.84	5.7	-0.8	3.7	6.2	1.41	1.94	G	G
	stGRANGER	2657	814	1481	61	0.02	54	0.03	79	2.63	7.2	1.6	0.2	5.6	2	2.06	G	G
	BERRYBLAK	2653	852	1049	73	0.12	63	0.11	80	2.6	6.7	0.7	1.2	6	1.42	1.51	G	G
	crHEALER	2644	851	1434	116	0.22	66	0.08	81	2.77	3.6	-1.1	2.2	7.5	1.74	1.43	G	G
	SKIPPY	2630	825	1024	84	0.16	51	0.07	80	2.72	6.6	1.6	N/A	7.8	1.56	1.82	G	G
	CHAIRMAN	2621	807	257	72	0.23	41	0.12	79	2.68	6.9	2.2	N/A	5.5	1.9	2.39	G	G
	DELTALAMBDA	2616	728	1299	65	0.06	49	0.03	82	2.82	5.4	0.1	1.2	6.3	3.09	3.13	G	G
	SUREROZ	2612	802	1324	61	0.04	48	0.03	80	2.62	8.6	1.2	1.5	7.7	2.01	2.43	G	G
	TETHRA	2600	782	2080	86	0.03	60	-0.01	91	2.76	5.7	0.8	1	7.5	1.5	1.83	78	26
	BLOWTORCH	2566	716	1249	73	0.09	50	0.04	97	2.55	5.5	1.1	1.3	7.1	1.63	1.58	328	85
	DELISHDION	2552	797	843	73	0.15	53	0.1	99	2.6	5.5	0.7	1	5.6	0.88	1.78	1599	106
	SCORPION	2540	733	1263	63	0.06	52	0.05	80	2.84	7	0.2	N/A	7.1	1.77	2.28	G	G
	HUNK	2529	764	1722	84	0.07	62	0.03	81	3.05	4.3	0.1	1.7	6.7	1.74	1.9	G	G
	GATEDANCER	2527	784	1554	78	0.07	66	0.07	98	3.06	4.3	-0.6	1.6	6.6	1.51	2.68	720	152
	CINCO	2525	657	2341	50	-0.13	69	-0.01	80	2.83	4.6	1.9	0.3	7.6	1.62	1.65	G	G
	NIGHTTIME	2524	639	1176	56	0.04	48	0.04	80	2.68	3.8	1	N/A	7.4	2.57	2.34	G	G
	CAHILL	2523	687	1978	48	-0.09	60	0	80	2.73	5.9	0.5	N/A	7.3	1.92	2.63	G	G
	ZEPHIR	2517	781	1635	64	0.01	56	0.02	80	2.88	7.9	-0.2	2.2	6.5	1.61	1.77	G	G
	JEDIFY	2513	694	1174	43	0	64	0.1	80	2.75	6.7	1.9	N/A	6.6	1.04	1.6	G	G
	RUSSIAN	2461	690	1619	80	0.07	56	0.02	98	2.81	4.3	-0.6	N/A	6.9	1.34	0.8	762	60
	FLAMER	2435	667	780	69	0.14	51	0.1	99	3.02	4.6	-0.7	N/A	6.8	1.82	1.58	684	51
	crRAY	2375	589	1288	49	0	47	0.03	94	2.88	5.1	0.6	1	6.8	1.18	2	131	38
	CHILIPEPPER P	2364	596	1561	50	-0.03	63	0.05	88	2.83	3.9	-0.3	N/A	6.4	1.34	1.06	32	17
	BENTLEY	2346	511	682	47	0.08	35	0.05	96	2.53	4.1	-1.6	2.4	6.7	2.66	2.47	448	190
	CALVADOS	2337	442	-243	37	0.17	9	0.06	79	2.6	3.9	2.6	N/A	7.1	2.93	2.89	G	G
Sexed	cbUNSTOPABULL	2302	366	382	23	0.03	11	0	80	2.81	3.2	1.7	-4.2	9.1	3.46	3.36	G	G
	stGHISTORY	2288	402	969	32	-0.01	41	0.04	79	2.69	1.9	-1.4	N/A	7.2	3.25	2.95	G	G
	stCHIEF	2267	386	763	33	0.02	25	0.01	80	2.63	3	-0.3	N/A	8.2	3.14	2.89	G	G
	1STGRADE	2255	395	761	23	-0.02	17	-0.02	84	2.61	4.4	0.5	N/A	6.5	2.99	3.56	G	G
	MACNUT-PP PP	2251	418	838	30	0	37	0.04	77	2.92	2.8	-0.2	N/A	6.7	2.42	2.02	G	G
	bsMASTER	2189	251	373	37	0.08	15	0.01	79	2.79	0.4	-2.7	N/A	11.1	4.31	3.69	G	G
	cbCHILL	2078	217	-46	11	0.05	7	0.03	80	2.69	2.4	0.1	-2.6	6	3.14	2.76	G	G
Sexed	THUNDERSTORM	1989	89	274	5	-0.02	8	0	79	2.84	0.5	-2.4	N/A	9.2	4.34	3.28	G	G
	BLONDRAPTOR	1913	45	-107	19	0.09	5	0.03	79	3.01	-1.6	-2.9	N/A	10.1	4.04	2.85	G	G
	AWESOMERED	1482	-293	-1281	-37	0.04	-39	0	98	3.11	-0.7	-1.9	N/A	10	2.96	4.24	1030	482

A2  SEXED SEMEN P POLLED PP HOMO-POLLED**SexedULTRA4M™**SEXEDULTRA4M and SEXEDULTRA  
are trademarks of Inguran LLC

# **MACASH**

**MACASH | SUPERHERO X RUBICON X ALTAOAK**  
 Bull ID: **MACASH** • Nasid Code: **94FFP10** • HB No: **FRA7261295251**



Sire: **ENDCO SUPERHERO-ET**  
 Dam: **FUSTEAD RUBICON LAVON-ET**

MGS: **EDG RUBICON-ET**  
 MGD: **FUSTEAD OAK LAFONDA-ET VG86**  
 365D 41,540M 3.5% 1437F 3.1% 1305P (lbs)



MGD: Glen-Toctin Bolt Lucille-ET EX90

- Breed leader for TPI and BPI. He will be one of the most sought after sires in 2019.
- He has been used as an elite flush sire and sire of sons. He is our No.2 for both TPI and BPI.

## **USDA Sire Summary 08/19**

Dtrs: G	Herts: G
Milk	813
%Rel	77
Protein	55 0.11%
Fat	93 0.23%
SCC	2.63
PL	6.4
C/Ease	6.8
DPR	1.5
SCR	N/A
GL	0.0

## **Australian Genomic ABV's 08/19**

BPI	362	66%R
HWI	287	59%R
TWI	353	64%R
ASI	199	77%R
Milk	235	
Protein	21kg	0.27%
Fat	44kg	0.49%
SCC	171	
Type	103	
Udder	104	
C/Ease	101	
Fertility	108	

## **USDA Type Linear 08/19**

TPI: 2785	NMS: 904	%Rel 76			
No. Dtrs: G	No. Herts: G				
Linear	-2	-1	0	1	2
Type					2.36
Udder Comp					2.44
Feet & Legs Comp					1.53
Stature					1.46
Strength					1.21
Dairy Form					0.95
Body Depth					0.84
Rump Angle					-0.25
Thurl Width					1.51
Legs Side View					1.42
Legs Rear View					1.56
Foot Angle					1.15
Fore Udder Att					3.28
Rear Udder Att H					3.18
Rear Udder Att W					2.93
Udder Cleft					0.73
Udder Depth					2.24
Front Teat Place					1.41
Rear Teat Place					0.9
Teat Length					-0.01



>> **MACASH**

# **SUREROZ**

**SIEMERS S-HERO SURE-ROZ-ET | SUPERHERO X DELTA X SUPERSIRE**  
 Bull ID: **SUREROZ** • Nasid Code: **80FFPE3** • HB No: **8403138483531**



Sire: **ENDCO SUPERHERO-ET**  
 Dam: **SIEMERS DELTA S-ROZZANN-ET**

MGS: **MR MOGUL DELTA 1427-ET**  
 MGD: **SIEMERS S-SIRE ROZ-ANNE-ET**  
 365D 46,740M 3.4% 1567F 3.0% 1423P (lbs)



Siemers S-Hero Sure-Roz-ET

- Sureroz is possibly our most complete sire at +328 BPI, over +2.0 for both type and udders.
- He has everything, production, type, BPI, fertility and so much more.

## **USDA Sire Summary 08/19**

Dtrs: G	Herts: G
Milk	1324
%Rel	80
Protein	48 0.03%
Fat	61 0.04%
SCC	2.62
PL	8.6
C/Ease	7.7
DPR	1.2
SCR	1.5
GL	-2.0
ICC	1011

## **Australian Genomic ABV's 08/19**

BPI	328	66%R
HWI	291	59%R
TWI	343	64%R
ASI	124	77%R
Milk	825	
Protein	23kg	0.01%
Fat	27kg	-0.12%
SCC	160	
Type	107	
Udder	107	
C/Ease	101	
Fertility	112	

>> MGD: Siemers S-Sire Roz-Anne-ET

## **USDA Type Linear 08/19**

TPI: 2612	NMS: 802	%Rel 78			
No. Dtrs: G	No. Herts: G				
Linear	-2	-1	0	1	2
Type					2.01
Udder Comp					2.43
Feet & Legs Comp					0.66
Stature					0.88
Strength					0.51
Dairy Form					0.73
Body Depth					0.27
Rump Angle					0.32
Thurl Width					1.18
Legs Side View					-0.11
Legs Rear View					0.48
Foot Angle					0.89
Fore Udder Att					2.94
Rear Udder Att H					3.14
Rear Udder Att W					2.89
Udder Cleft					0.89
Udder Depth					2.19
Front Teat Place					0.73
Rear Teat Place					0.49
Teat Length					-0.18





# CARIBBEAN

TJR NOBLE CARIBBEAN-ET TC | NOBLE X DELTA X NUMERO UNO  
Bull ID: CARIBBEAN • Nasid Code: 80FFPGA • HB No: 8403142704383



SexedULTRA4M

Sire: MR SPRING NOBLE-ET  
Dam: TJR 56252 DELT 62643

MGS: MR MOGUL DELTA 1427-ET  
MGD: TUR CACHE UNO 56252-ET  
01-10 305D 24,630M 5.0% 1243F 3.5% 865P



- A new exciting release and the ONLY bull in the breed over +2.2 Type, Udders, +2.2 DPR and under 6.5 CE and over 1600 milk.
- He will improve milk, type, fertility and an ideal heifer bull available in sexedUltra4M.

TJR Noble Caribbean-ET TC

## USDA Sire Summary 08/19

Dtrs: G	Herts: G
Milk	1652
%Rel	77
Protein	45
Fat	65
SCC	2.84
PL	7.8
C/Ease	6.5
DPR	3.7
GL	-1.0

## Australian Genomic ABV 08/19

BPI	191	21%R
HWI	167	19%R
TWI	184	21%R
ASI	90	24%R
Milk	332	
Protein	11kg	0.03%
Fat	28kg	0.02%
SCC	137	
Type	101	
Udder	103	
C/Ease	100	
Fertility	104	

## USDA Type Linear 08/19

TPI: 2730	NMS: +856				
No. Dtrs: G	No. Herds: G				
	Rel% 76				
Linear	-2	-1	0	1	2
Type					2.48
Udder Comp					2.65
Feet & Legs Comp					1.60
Stature					1.06
Strength					0.12
Dairy Form					2.23
Body Depth					0.31
Rump Angle					0.40
Thurl Width					1.38
Legs Side View					-0.61
Legs Rear View					1.43
Foot Angle					1.50
Fore Udder Att					2.42
Rear Udder Att H					4.10
Rear Udder Att W					3.77
Udder Cleft					1.19
Udder Depth					1.64
Front Teat Place					1.37
Rear Teat Place					1.11
Teat Length					-0.92

# DOGE

PEAK DOGE-ET | DUKE X SILVER X SUPERSIRE  
Bull ID: DOGE • Nasid Code: 80FFRAD • HB No: 8403147840151



Sire: S-S-I MONTROSS DUKE  
Dam: BRU-DALE ZERONICA-ET

MGS: SEAGULL-BAY SILVER-ET  
MGD: BRU-DALE SS ZELLY-ET  
305D 29,520M 4.0% 1176F 3.3% 968P (lbs)



- Our highest TPI sire at +2794 & still +320 BPI with +106 daughter fertility.
- He has an ideal production proof with outstanding fat 129.

Dam: Bru-Dale Zeronica-ET



## USDA Sire Summary 08/19

Dtrs: G	Herts: G
Milk	1545
%Rel	79
Protein	70
Fat	129
SCC	2.77
PL	5.6
C/Ease	7.8
DPR	-0.4
SCR	N/A
GL	-4.0
ICC	1115

## Australian Genomic ABV 08/19

BPI	320	67%R
HWI	250	60%R
TWI	333	66%R
ASI	174	77%R
Milk	203	
Protein	15kg	0.18%
Fat	51kg	0.61%
SCC	158	
Type	106	
Udder	106	
C/Ease	101	
Fertility	106	

## USDA Type Linear 08/19

TPI: 2794		NMS: 994			
No. Dtrs: G		No. Herds: G		%Rel 80	
Linear	-2	-1	0	1	2
Type				<div></div>	1.75
Udder Comp				<div></div>	1.82
Feet & Legs Comp				<div></div>	0.46
Stature				<div></div>	0.89
Strength				<div></div>	0.96
Dairy Form				<div></div>	1.45
Body Depth				<div></div>	0.94
Rump Angle				<div></div>	0.94
Thurl Width				<div></div>	0.58
Legs Side View				<div></div>	0.13
Legs Rear View				<div></div>	0.14
Foot Angle				<div></div>	1.00
Fore Udder Att				<div></div>	2.28
Rear Udder Att H				<div></div>	2.98
Rear Udder Att W				<div></div>	2.74
Udder Cleft				<div></div>	0.24
Udder Depth				<div></div>	0.82
Front Teat Place				<div></div>	0.94
Rear Teat Place				<div></div>	0.37
Teat Length			<div></div>		-0.69

# CHAIRMAN

ST GEN DIRECTOR CHAIRMAN-ET | DIRECTOR X MARDI GRAS X NUMERO UNO  
Bull ID: CHAIRMAN • Nasid Code: 80FFNAB • HB No: 8403132350147



SexedULTRA4M

Sire: MR PRE DIRECTOR 57512-ET  
Dam: MS MARDI GRAS CRYSTAL-ET VG86

MGS: MR MOVIESTAR MARDI GRAS-ET  
MGD: LARCREST CARDIGAN-ET VG86  
288D 20,390M 3.9% 800F 3.1% 629P (lbs)



- Chairman remains a breed leading BPI sire at +326 and one of the best in the breed for combined BPI and TPI.
- An outstanding fertility sire at +2.2 DPR and +110 daughter fertility.
- He is available in SexedUltra4M and conventional semen for your heifer program at an amazing +5.5 calving ease.

MGD: Larcrest Cardigan-ET VG86



## USDA Sire Summary 08/19

Dtrs: G	Herts: G
Milk	257
%Rel	79
Protein	41
Fat	72
SCC	2.68
PL	6.9
C/Ease	5.5
DPR	2.2
SCR	N/A
GL	0.0

## Australian Genomic ABV 08/19

BPI	326	66%R
HWI	267	59%R
TWI	298	64%R
ASI	171	77%R
Milk	146	
Protein	17kg	0.24%
Fat	40kg	0.48%
SCC	159	
Type	100	
Udder	104	
C/Ease	104	
Fertility	110	

## USDA Type Linear 08/19

TPI: 2621		NMS: 807			
No. Dtrs: G		No. Herds: G		%Rel 79	
Linear		-2 -1		0 1 2	
Type				<div></div>	1.90
Udder Comp				<div></div>	2.39
Feet & Legs Comp				<div></div>	0.45
Stature				<div></div>	1.44
Strength				<div></div>	0.39
Dairy Form				<div></div>	1.02
Body Depth				<div></div>	0.55
Rump Angle				<div></div>	-1.69
Thurl Width				<div></div>	1.91
Legs Side View				<div></div>	1.71
Legs Rear View				<div></div>	0.35
Foot Angle				<div></div>	0.63
Fore Udder Att				<div></div>	3.06
Rear Udder Att H				<div></div>	2.65
Rear Udder Att W				<div></div>	2.44
Udder Cleft				<div></div>	2.23
Udder Depth				<div></div>	2.74
Front Teat Place				<div></div>	1.74
Rear Teat Place				<div></div>	2.18
Teat Length				<div></div>	-0.39

# STNOBLE

MR SPRING NOBLE-ET | ALTASPRING X NUMERO UNO X ROBUST

Bull ID: STNOBLE • Nasid Code: 80FFNDJ • HB No: 8403132349851



SexedULTRA4M

Sire: WESTENRADE ALTASPRING  
Dam: MS DELICIOUS NIGHTOUT 3-ETN  
305D 32,970M 3.1% 1029F 3.2% 1055P (lbs)  
MGS: AMIGHETTI NUMERO UNO-ET EX90  
MGD: MISS OCD ROBST DELICIOUS-ET VG87  
365D 62,941M 3.3% 2100F 3.0% 1894P (lbs)



- Noble is at +2768 TPI and is from the same family that has produced Delta and many others
- One of the breeds most complete sires, he is +1.7 DPR, +2.17 type and +2.95 udders

Mr Spring Noble-ET

## USDA Sire Summary 08/19

Dtrs: G	Herts: G
Milk	1662
%Rel	80
Protein	56 0.02%
Fat	76 0.05%
SCC	2.57
PL	7.3
C/Ease	8.9
DPR	1.7
SCR	N/A
GL	-1.0

## Australian Genomic ABV 08/19

BPI	241	68%R
HWI	207	61%R
TWI	240	67%R
ASI	105	78%R
Milk	809	
Protein	20kg	-0.03%
Fat	25kg	-0.13%
SCC	152	
Type	102	
Udder	108	
C/Ease	97	
Fertility	107	

## USDA Type Linear 08/19

TPI: 2768	NMS: 894		
No. Dtrs: G	No. Herds: G		%Rel 79
Linear	-2 -1	0 1	2
Type			2.17
Udder Comp			2.95
Feet & Legs Comp			0.60
Stature			0.88
Strength			0.34
Dairy Form			1.24
Body Depth			0.10
Rump Angle			-0.15
Thurl Width			1.84
Legs Side View			-0.31
Legs Rear View			0.53
Foot Angle			0.88
Fore Udder Att			2.78
Rear Udder Att H			4.07
Rear Udder Att W			3.74
Udder Cleft			1.84
Udder Depth			2.13
Front Teat Place			1.59
Rear Teat Place			1.49
Teat Length			-0.56

## GENOMIC PACK

# STGNOLAN

MR SUPERHERO NOLAN-ET | SUPERHERO X NUMERO UNO X ROBUST

Bull ID: STGNOLAN • Nasid Code: 80FFPBB • HB No: 8403132351486



SexedULTRA4M

Sire: ENDCO SUPERHERO-ET  
Dam: MS DELICIOUS NIGHTOUT 2-ETN  
305D 35,050M 3.0% 1036F 3.2% 1134P (lbs)  
MGS: AMIGHETTI NUMERO UNO-ET EX90  
MGD: MISS OCD ROBST DELICIOUS-ET VG87  
365D 62,941M 3.3% 2100F 3.0% 1894P (lbs)



- Nolan is the high TPI, BPI Superhero brother to NOBLE and NEXUS
- He is also over +2700 TPI an improves both DPR and type.

Mr Superhero Nolan-ET

## USDA Sire Summary 08/19

Dtrs: G	Herts: G
Milk	1599
%Rel	80
Protein	61 0.04%
Fat	70 0.04%
SCC	2.67
PL	8.1
C/Ease	6.3
DPR	1.7
SCR	N/A
GL	-1.0
ICC	

## Australian Genomic ABV 08/19

BPI	294	67%R
HWI	240	60%R
TWI	267	66%R
ASI	143	78%R
Milk	851	
Protein	25kg	0.05%
Fat	29kg	-0.11%
SCC	160	
Type	100	
Udder	106	
C/Ease	101	
Fertility	109	

## USDA Type Linear 08/19

TPI: 2704	NMS: 874		
No. Dtrs: G	No. Herds: G		%Rel 78
Linear	-2	-1	0 1 2
Type			2.12
Udder Comp			1.85
Feet & Legs Comp			0.70
Stature			0.88
Strength			0.11
Dairy Form			2.30
Body Depth			0.36
Rump Angle			0.62
Thurl Width			1.89
Legs Side View			1.30
Legs Rear View			0.14
Foot Angle			0.22
Fore Udder Att			1.75
Rear Udder Att H			3.16
Rear Udder Att W			2.91
Udder Cleft			1.81
Udder Depth			0.46
Front Teat Place			1.54
Rear Teat Place			1.40
Teat Length			-1.75

# STNEXUS

MR SUPERHERO NEXUS-ET | SUPERHERO X NUMERO UNO X ROBUST

Bull ID: STNEXUS • Nasid Code: 80FFPBG • HB No: 8403132352602



Sire: ENDCO SUPERHERO-ET  
Dam: MS DELICIOUS NIGHTOUT 2-ETN  
305D 35,050M 3.0% 1036F 3.2% 1134P (lbs)  
MGS: AMIGHETTI NUMERO UNO-ET EX90  
MGD: MISS OCD ROBST DELICIOUS-ET VG87  
365D 62,941M 3.3% 2100F 3.0% 1894P (lbs)



- Nexus is a full brother to Nolan and ticks all the boxes.
- When everyone is looking for DPR this is a sire with no holes.

Mr Superhero Nexus-ET

## USDA Sire Summary 08/19

Dtrs: G	Herts: G
Milk	1222
%Rel	80
Protein	56 0.07%
Fat	68 0.08%
SCC	2.70
PL	7.7
C/Ease	7.5
DPR	2.8
SCR	N/A
GL	0.0

## Australian Genomic ABV 08/19

BPI	279	67%R
HWI	236	60%R
TWI	248	66%R
ASI	112	78%R
Milk	679	
Protein	20kg	0.03%
Fat	24kg	-0.07%
SCC	163	
Type	99	
Udder	104	
C/Ease	101	
Fertility	111	

## USDA Type Linear 08/19

TPI: 2672	NMS: 829			
No. Dtrs: G	No. Herds: G	%Rel 78		
Linear	-2 -1	0 1	2	
Type				1.80
Udder Comp				1.84
Feet & Legs Comp				0.43
Stature				1.20
Strength				0.57
Dairy Form				1.20
Body Depth				0.47
Rump Angle				0.50
Thurl Width				1.48
Legs Side View				-0.05
Legs Rear View				0.14
Foot Angle				0.68
Fore Udder Att				1.66
Rear Udder Att H				3.03
Rear Udder Att W				2.79
Udder Cleft				1.50
Udder Depth				0.90
Front Teat Place				0.81
Rear Teat Place				0.97
Teat Length				-0.49



# DILLYDILLY

GENOSOURCE DILLY DILLY-ET | NOBLE X MONTROSS X NUMERO UNO

Bull ID: DILLYDILLY • Nasid Code: • HB No: 8403147223705



Sire: MR SPRING NOBLE-ET  
Dam: FARNEAR-TBR-BH MT30801-ET

MGS: BACON-HILL MONTROSS-ET EX92  
MGD: EDG RUBY UNO RACHEL-ET  
365D 28,400M 4.7% 1345F 3.5% 981P (lbs)



- We are exciting to release Dilly Dilly at +2783 TPI with his DPR, moderate stature and strength he will breed the modern dairy cow.
- This A2/A2 Noble son with type, good udders and lowers pins.

MGD: Sandy Valley Robust Ruby

## USDA Sire Summary 08/19

Dtrs: G	Herts: G
Milk	1839
%Rel	76
Protein	69 0.04%
Fat	82 0.05%
SCC	2.82
PL	6.9
C/Ease	8.2
DPR	1.5
GL	-2.0

## Australian Genomic ABV 08/19

BPI	216	64%R
HWI	179	57%R
TWI	202	63%R
ASI	114	77%R
Milk	668	
Protein	19kg	0.01
Fat	30kg	0.02
SCC	145	
Type	99	
Udder	107	
C/Ease	100	
Fertility	104	

## USDA Type Linear 08/19

TPI: 2783	NMS: 922	No. Dtrs: G	No. Herts: G	%Rel 75
Linear				
Type				2.10
Udder Comp				2.24
Feet & Legs Comp				1.01
Stature				0.96
Strength				0.37
Dairy Form				1.51
Body Depth				0.18
Rump Angle				0.22
Thurl Width				1.27
Legs Side View				-0.63
Legs Rear View				0.79
Foot Angle				1.16
Fore Udder Att				1.77
Rear Udder Att H				3.43
Rear Udder Att W				3.16
Udder Cleft				1.64
Udder Depth				1.42
Front Teat Place				0.75
Rear Teat Place				0.98
Teat Length				-0.42

# AGR JUDGEMENT

FARNEAR JUDGEMENT-ET | NIGHTCAP X DELTA X SUPERSIRE

Bull ID: AGRJUDGEMENT • Nasid Code: 80FFRAF • HB No: 8403148918715



Sire: MR SPRING NIGHTCAP 74636-ET  
Dam: FARNEAR JANT DELTA 80011-ET

MGS: MR MOGUL DELTA 1427-ET  
MGD: FARNEAR JADA JANET - VG87  
365D 30,100M 4.3% 1289F 3.9% 1160P



- Judgement is a new exciting release sire that will breed the modern day dairy cow.
- With an ideal production proof, health, fertility with type and moderate stature.

MGD: Farnear Jada Janet

## USDA Sire Summary 08/19

Dtrs: G	Herts: G
Milk	1540
%Rel	76
Protein	61 0.05%
Fat	89 0.11%
SCC	2.69
PL	6.3
C/Ease	7.0
DPR	0.5
GL	-2.0

## Australian Genomic ABV 08/19

BPI	223	22%R
HWI	188	20%R
TWI	217	22%R
ASI	124	25%R
Milk	650	
Protein	19kg	0.02
Fat	33kg	0.08
SCC	141	
Type	102	
Udder	104	
C/Ease	102	
Fertility	103	

## USDA Type Linear 08/19

TPI: 2745	NMS: 902	No. Dtrs: G	No. Herts: G	%Rel 74
Linear				
Type				2.28
Udder Comp				2.50
Feet & Legs Comp				0.85
Stature				1.08
Strength				0.43
Dairy Form				2.39
Body Depth				0.70
Rump Angle				-0.11
Thurl Width				1.77
Legs Side View				0.07
Legs Rear View				0.87
Foot Angle				1.06
Fore Udder Att				2.19
Rear Udder Att H				3.91
Rear Udder Att W				3.60
Udder Cleft				1.66
Udder Depth				1.35
Front Teat Place				1.24
Rear Teat Place				1.37
Teat Length				-0.56

# STPANTHER

TRJ DYNAMO PANTHER-ET | DYNAMO X PROFIT X JACEY

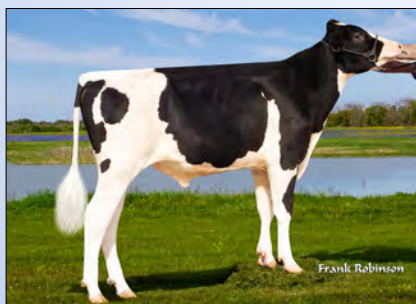
Bull ID: STPANTHER • Nasid Code: 80FFPDB • HB No: 8403142704727



SexedULTRA4+

Sire: MR RUBICON DYNAMO-ET  
Dam: T-SPRUCE PROFIT 9364-ET

MGS: S-S-I PARTYROCK PROFIT-ET  
MGD: T-SPRUCE JACEY 8120-ET  
305D 33,990M 3.1% 1057F 3.0% 1008P (lbs)



- Early release A2/A2 Dynamo son with huge TPI numbers and great type linear
- Positive components, +7.8 PL with type and udders over +2 and super calving ease

TRJ Dynamo Panther-ET

## USDA Sire Summary 08/19

Dtrs: G	Herts: G
Milk	1344
%Rel	77
Protein	63 0.08%
Fat	68 0.06%
SCC	2.53
PL	7.8
C/Ease	5.8
DPR	0.6
SCR	N/A
GL	-2.0

## Australian Genomic ABV 08/19

BPI	277	65%R
HWI	233	57%R
TWI	251	63%R
ASI	143	77%R
Milk	292	
Protein	18kg	0.19%
Fat	26kg	0.20%
SCC	171	
Type	101	
Udder	104	
C/Ease	102	
Fertility	106	

## USDA Type Linear 08/19

TPI: 2727	NMS: 865	No. Dtrs: G	No. Herts: G	%Rel 76
Linear				
Type				2.05
Udder Comp				2.44
Feet & Legs Comp				1.20
Stature				1.54
Strength				0.53
Dairy Form				0.94
Body Depth				0.39
Rump Angle				0.60
Thurl Width				0.86
Legs Side View				-0.25
Legs Rear View				1.49
Foot Angle				1.24
Fore Udder Att				2.66
Rear Udder Att H				3.21
Rear Udder Att W				2.95
Udder Cleft				2.04
Udder Depth				2.29
Front Teat Place				1.63
Rear Teat Place				1.98
Teat Length				-0.30

# 1STGRADE

FARNEAR-BH 1ST GRADE-ET | ALTA1STCLASS X MCCUTCHEN X SUPER

Bull ID: 1STGRADE • Nasis Code: 80FFMBX • HB No: 8403125993676



SexedULTRA 4M

Sire: ZAHBULLS ALTA1STCLASS-ET  
Dam: FARNEAR-TBR-BH GABRIELLE-ET

MGS: DE-SU BKM MCCUTCHEN 1174-ET EX93  
MGD: B-ENTERPRISE SUPER GIGI-ET VG88  
350D 41,980M 2.8% 1187F 2.8% 1183P (lbs)



Full sister to dam: Farnear-TBR-BH Georgia-ET VG87

- Breed leading udders at +3.56, CE sire at +6.5 & over +4.00 for 4 udder traits.
- Breeders are excited about their 1stGrade daughters.
- He is proving himself as an elite breeding and flush sire

## USDA Sire Summary 08/19

Dtrs: G	Herds: G
Milk	761
%Rel	84
Protein	17 -0.02%
Fat	23 -0.02%
SCC	2.61
PL	4.4
C/Ease	6.5
DPR	0.5
GL	-1.0

## Australian Genomic ABV's 08/19

BPI	225	69%R
HWI	209	62%R
TWI	232	68%R
ASI	62	79%R
Milk	692	
Protein	14kg	-0.08%
Fat	18kg	-0.17%
SCC	167	
Type	103	
Udder	108	
C/Ease	100	
Fertility	106	

>>  
MGD: B-Enterprise  
Super Gigi-ET VG88

## USDA Type Linear 08/19

TPI: 2255		NMS: 395		
No. Dtrs: G	No. Herds: G	%Rel 79		
Linear	-2 -1	0	1	2
Type			<div></div>	2.99
Udder Comp			<div></div>	3.56
Feet & Legs Comp			<div></div>	0.92
Stature			<div></div>	3.41
Strength			<div></div>	1.25
Dairy Form			<div></div>	1.33
Body Depth			<div></div>	1.36
Rump Angle		<div></div>		-0.44
Thurl Width			<div></div>	1.01
Legs Side View		<div></div>		-0.14
Legs Rear View			<div></div>	0.99
Foot Angle			<div></div>	2.40
Fore Udder Att			<div></div>	4.42
Rear Udder Att H			<div></div>	4.47
Rear Udder Att W			<div></div>	4.11
Udder Cleft			<div></div>	2.69
Udder Depth			<div></div>	4.64
Front Teat Place			<div></div>	2.03
Rear Teat Place			<div></div>	2.14
Teat Length		<div></div>		0.11



# STCHIEF

STANTONS CHIEF-ET | HIGH OCTANE X NUMERO UNO X OBSERVER

Bull ID: STCHIEF • Nasis Code: 80FFMD2 • HB No: 8403129015989



SexedULTRA 4M

Sire: STANTONS HIGH OCTANE - EX93  
Dam: ROCKYMOUNTAIN UNO CHEYANNE - VG85

305D 12,497M 4.5% 563F 3.4% 424P  
MGS: AMIGHETTI NUMERO UNO-ET EX90  
MGD: LARCREST CHEVELLE-ET VG87  
305D 14,446M 3.3% 482F 3.2% 467P (lbs)



Dam: Rockymountain Uno Cheyanne VG85

- Chief has joined the team as an elite sexed semen and flush sire being used across the world.
- He has proven he can make the special ones and will improve rumps and strength.
- The high profile High Octane son is also positive in all the health and fertility traits.

## USDA Sire Summary 08/19

Dtrs: G	Herds: G
Milk	763
%Rel	80
Protein	25 0.01%
Fat	33 0.02%
SCC	2.63
PL	3.0
C/Ease	8.2
DPR	-0.3
GL	0.0

## Australian Genomic ABV's 08/19

BPI	216	69%R
HWI	186	62%R
TWI	233	68%R
ASI	63	79%R
Milk	706	
Protein	15kg	-0.08%
Fat	18kg	-0.18%
SCC	178	
Type	104	
Udder	107	
C/Ease	101	
Fertility	105	

>>  
Stantons Chief-ET

## USDA Type Linear 08/19

TPI: 2267		NMS: 386			
No. Dtrs: G	No. Herds: G	%Rel 80			
Linear	-2 -1	0 1	2		
Type			<div></div>		3.14
Udder Comp			<div></div>		2.89
Feet & Legs Comp			<div></div>		1.07
Stature			<div></div>		3.47
Strength			<div></div>		2.22
Dairy Form			<div></div>		0.77
Body Depth			<div></div>		1.87
Rump Angle			<div></div>		0.62
Thurl Width			<div></div>		2.63
Legs Side View		<div></div>			-0.47
Legs Rear View			<div></div>		1.29
Foot Angle			<div></div>		1.99
Fore Udder Att			<div></div>		3.85
Rear Udder Att H			<div></div>		4.00
Rear Udder Att W			<div></div>		3.68
Udder Cleft			<div></div>		1.43
Udder Depth			<div></div>		4.05
Front Teat Place			<div></div>		0.83
Rear Teat Place			<div></div>		0.72
Teat Length		<div></div>			-0.39





# ST TWISTER

MR SPRHERO TWISTER-ET | SUPERHERO X DELTA X NUMERO UNO  
Bull ID: STTWISTER • Nasid Code: 80FFPDE • HB No: 8403132352305



SexedULTRA4M

Sire: ENDCO SUPERHERO-ET  
Dam: MS FARNEAR TRUDY THYME-ET VG85

MGS: MR MOGUL DELTA 1427-ET  
MGD: EDG TRAC UNO TRUDY - VG86  
365D 38,720M 4.5% 1758F 3.6% 1406P



- New release type and health trait leader from a modern pedigree going back to Ronelee Outside Debbie cow family
- At +2.95 for type and over +3 for udders with moderate stature and +2.5 DPR - a unique combination

Dam: Ms Farnear Trudy Thyme-ET VG85

## USDA Sire Summary 08/19

Dtrs: G	Herts: G
Milk	425
%Rel	79
Protein	37
Fat	78
SCC	2.70
PL	6.8
C/Ease	7.4
DPR	2.5
SCR	N/A
GL	-1.0

## Australian Genomic ABV 08/19

BPI	285	66%R
HWI	251	58%R
TWI	285	64%R
ASI	106	77%R
Milk	342	
Protein	13kg	0.08%
Fat	27kg	0.17%
SCC	168	
Type	102	
Udder	109	
C/Ease	102	
Fertility	110	

## USDA Type Linear 08/19

TPI: 2711	NMS: 815	%Rel 78
No. Dtrs: G	No. Herts: G	
Linear	-2 -1	0 1 2
Type		2.95
Udder Comp		3.23
Feet & Legs Comp		1.44
Stature		1.31
Strength		0.46
Dairy Form		1.51
Body Depth		0.51
Rump Angle		-0.61
Thurl Width		1.46
Legs Side View		0.17
Legs Rear View		0.92
Foot Angle		1.27
Fore Udder Att		3.76
Rear Udder Att H		4.10
Rear Udder Att W		3.77
Udder Cleft		2.27
Udder Depth		2.81
Front Teat Place		2.06
Rear Teat Place		1.79
Teat Length		-0.96

# DELTALAMBDA

FARNEAR DELTA-LAMBDA-ET | DELTA X NUMERO UNO X SNOWMAN  
Bull ID: DELTALAMBDA • Nasid Code: 80FFMD1 • HB No: 8403125993715



SexedULTRA4M

Sire: MR MOGUL DELTA 1427-ET  
Dam: EDG LORETTE UNO 2198-ET VG88  
365D 30,650M 3.8% 1165F 3.4% 1031P (lbs)  
MGS: AMIGHETTI NUMERO UNO-ET EX90  
MGD: VELTHUIS SNOWMAN LORETTE-ET VG87



- A type, fertility and production sire at its best.
- He has a near faultless liner proof with leading rear udders, rump, feet and legs.

Dam: EDG Lorette Uno 2109-ET VG88

## USDA Sire Summary 08/19

Dtrs: G	Herts: G
Milk	1299
%Rel	82
Protein	49
Fat	65
SCC	2.82
PL	5.4
C/Ease	6.3
DPR	0.1
SCR	1.2
GL	0.0

## Australian Genomic ABV 08/19

BPI	221	68%R
HWI	186	61%R
TWI	234	67%R
ASI	102	78%R
Milk	672	
Protein	15kg	-0.05%
Fat	36kg	0.10%
SCC	156	
Type	103	
Udder	108	
C/Ease	102	
Fertility	102	

## USDA Type Linear 08/19

TPI: 2616	NMS: 728	%Rel 80
No. Dtrs: G	No. Herts: G	
Linear	-2 -1	0 1 2
Type		3.09
Udder Comp		3.13
Feet & Legs Comp		1.91
Stature		2.14
Strength		0.87
Dairy Form		2.45
Body Depth		1.24
Rump Angle		0.47
Thurl Width		1.83
Legs Side View		-0.61
Legs Rear View		1.72
Foot Angle		2.70
Fore Udder Att		3.47
Rear Udder Att H		4.56
Rear Udder Att W		4.20
Udder Cleft		2.47
Udder Depth		2.24
Front Teat Place		2.07
Rear Teat Place		2.34
Teat Length		-0.89

# STRAPID

ST GEN R-HAZE RAPID-ET | RUBI-HAZE X RUBICON X LET IT SNOW  
Bull ID: STRAPID • Nasid Code: 80FFPCU • HB No: 8403132352752



SexedULTRA4M

Sire: MR DDS RUBI-HAZE 54682-ET  
Dam: ST ALANA RUB 54761-ET

MGS: EDG RUBICON-ET  
MGD: EDG LACY SNOW 2114  
365D 29,700M 3.8% 1136F 3.5% 1037P (lbs)



- He will be an elite flush sire bull for 2019.
- Rapid offers high type with extreme components and adds the strength that many are looking for.

St Gen R-Haze Rapid-ET

## USDA Sire Summary 08/19

Dtrs: G	Herts: G
Milk	1629
%Rel	78
Protein	64
Fat	95
SCC	2.82
PL	5.5
C/Ease	8.0
DPR	-0.9
SCR	N/A
GL	0.0

## Australian Genomic ABV 08/19

BPI	250	65%R
HWI	225	57%R
TWI	247	63%R
ASI	98	76%R
Milk	624	
Protein	16kg	-0.02%
Fat	28kg	0.02%
SCC	164	
Type	100	
Udder	105	
C/Ease	102	
Fertility	105	

## USDA Type Linear 08/19

TPI: 2760	NMS: 887	%Rel 75
No. Dtrs: G	No. Herts: G	
Linear	-2 -1	0 1 2
Type		3.02
Udder Comp		2.55
Feet & Legs Comp		1.75
Stature		2.64
Strength		1.21
Dairy Form		2.40
Body Depth		1.48
Rump Angle		-0.17
Thurl Width		1.76
Legs Side View		0.79
Legs Rear View		2.31
Foot Angle		1.65
Fore Udder Att		3.15
Rear Udder Att H		3.55
Rear Udder Att W		3.27
Udder Cleft		2.35
Udder Depth		2.51
Front Teat Place		2.51
Rear Teat Place		2.56
Teat Length		-0.33

# NICHE

MR RUBICON NICHE-ET | RUBICON X MONTROSS X NUMERO UNO  
Bull ID: NICHE • Nasis Code: 80FFPDC • HB No: 8403132352692



SexedULTRA4M

Sire: EDG RUBICON-ET  
Dam: MS M NIGHTOUT 31861-ET

MGS: BACON-HILL MONTROSS-ET EX92  
MGD: MS DELICIOUS NIGHTOUT-ET VG85  
305D 33,340M 3.9% 1294F 3.2% 1051P (lbs)



- Magic cross of Rubicon and Delicious that combines dairy strength, moderate stature with great type and index.
- High TPI with moderate stature and type and udders over +2.2

MGD: MS Delicious Nightout-ET VG85

## USDA Sire Summary 08/19

Dtrs: G	Herts: G
Milk	1440
%Rel	79
Protein	55 0.04%
Fat	83 0.10%
SCC	2.75
PL	7.0
C/Ease	7.8
DPR	0.1
SCR	N/A
GL	-1.0

## Australian Genomic ABV 08/19

BPI	212	68%R
HWI	185	61%R
TWI	214	67%R
ASI	85	78%R
Milk	627	
Protein	14kg	-0.06%
Fat	30kg	0.05%
SCC	176	
Type	100	
Udder	107	
C/Ease	102	
Fertility	103	

## USDA Type Linear 08/19

TPI: 2718	NMS: 876				
No. Dtrs: G	No. Herds: G		%Rel 78		
Linear	-2	-1	0	1	2
Type					2.20
Udder Comp					2.42
Feet & Legs Comp					1.79
Stature					1.12
Strength					0.81
Dairy Form					1.28
Body Depth					0.61
Rump Angle					-0.52
Thurl Width					0.84
Legs Side View					-0.96
Legs Rear View					2.19
Foot Angle					1.44
Fore Udder Att					2.41
Rear Udder Att H					3.62
Rear Udder Att W					3.33
Udder Cleft					1.42
Udder Depth					1.48
Front Teat Place					0.84
Rear Teat Place					1.13
Teat Length					-0.12

# NIGHTIME

MR KB NIGHTIME 166-ET | KINGBOY X NUMERO UNO X ROBUST  
Bull ID: NIGHTIME • Nasis Code: 80FFLE4 • HB No: 8403125993625



SexedULTRA4M

Sire: MORNINGVIEW MCC KINGBOY-ET EX90  
Dam: MS DELICIOUS NIGHT TO BE-ET VG88  
305D 33,860M 3.5% 1185F 3.1% 1043P (lbs)

MGS: AMIGHETTI NUMERO UNO-ET EX90  
MGD: MISS OCD ROBST DELICIOUS-ET VG87  
365D 62,941M 3.3% 2100F 3.0% 1894P (lbs)



- One of the total all round sires that ticks all the boxes.
- He is high BPI, TPI, type, daughter fertility and has an ideal production proof.
- His dam is a sister to the current former no.2 TPI and LPI sire Delta.

Dam: Miss OCD Robst Delicious-ET VG87

## USDA Sire Summary 08/19

Dtrs: G	Herts: G
Milk	1176
%Rel	80
Protein	48 0.04%
Fat	56 0.04%
SCC	2.68
PL	3.8
C/Ease	7.4
DPR	1.0
SCR	N/A
GL	-1.0

## Australian Genomic ABV 08/19

BPI	267	69%R
HWI	226	62%R
TWI	244	68%R
ASI	121	79%R
Milk	566	
Protein	20kg	0.09%
Fat	23kg	-0.02%
SCC	185	
Type	100	
Udder	105	
C/Ease	101	
Fertility	106	

## USDA Type Linear 08/19

TPI: 2524	NMS: 639		
No. Dtrs: G	No. Herds: G		%Rel 79
Linear	-2	-1	0 1 2
Type			2.57
Udder Comp			2.34
Feet & Legs Comp			1.36
Stature			1.74
Strength			1.02
Dairy Form			1.57
Body Depth			0.98
Rump Angle			-0.39
Thurl Width			2.20
Legs Side View			-0.35
Legs Rear View			1.17
Foot Angle			1.78
Fore Udder Att			2.32
Rear Udder Att H			3.66
Rear Udder Att W			3.37
Udder Cleft			1.94
Udder Depth			1.44
Front Teat Place			1.28
Rear Teat Place			1.00
Teat Length			-0.05

# RUSSIAN

EDG UNO RUSSIAN 1417-ET | NUMERO UNO X ROBUST X PLANET  
Bull ID: RUSSIAN • Nasis Code: 80FFKCE • HB No: USA72128206



Sire: AMIGHETTI NUMERO UNO-ET EX90  
Dam: SANDY-VALLEY ROBUST RUBY-ET EX90  
305D 29,450M 3.2% 950F 3.1% 916P (lbs)

MGS: ROYLANE SOCRA ROBUST-ET VG88  
MGD: SANDY-VALLEY PLANE SAPPHIRE-ET VG87  
365D 39,130M 3.3% 1301F 2.8% 1101P (lbs)



- A solid all-rounder and brother to Rubicon.
- He will improve components, health and fertility.
- He has an ideal type linear and is from a great cow family.

Dam: Sandy-Valley Robust Ruby-ET EX90

## USDA Sire Summary 08/19

Dtrs: 762	Herts: 60
Milk	1619
%Rel	98
Protein	56 0.02%
Fat	80 0.07%
SCC	2.81
PL	4.3
C/Ease	6.9
DPR	-0.6
GL	0.0

## Australian Genomic ABV 08/19

BPI	215	74%R
HWI	188	68%R
TWI	188	73%R
ASI	97	81%R
Milk	627	
Protein	15kg	-0.03%
Fat	31kg	0.06%
SCC	154	
Type	98	
Udder	102	
C/Ease	104	
Fertility	105	

## USDA Type Linear 08/19

TPI: 2461		NMS: 690			
No. Dtrs: 78		No. Herds: 21		%Rel 91	
Linear	-2	-1	0	1	2
Type					1.34
Udder Comp					0.80
Feet & Legs Comp					0.56
Stature					1.80
Strength					0.56
Dairy Form					0.90
Body Depth					0.66
Rump Angle					-0.18
Thurl Width					0.76
Legs Side View					0.26
Legs Rear View					0.28
Foot Angle					0.89
Fore Udder Att					1.10
Rear Udder Att H					0.88
Rear Udder Att W					0.81
Udder Cleft					1.66
Udder Depth					1.63
Front Teat Place					1.23
Rear Teat Place					1.24
Teat Length					0.13



# CRHEALER

AOT BLOWTORCH HEALER-ET | BLOWTORCH X SUPERSIRE X MAN-O-MAN

Bull ID: CRHEALER • Nasis Code: 80FFPAG • HB No: 8403141134983



Sire: SYRYCZUK SILVR BLOWTORCH-ET  
Dam: COOKIECUTTER SSIRE HAS-ET VG87  
365D 38,700M 4.5% 1740F 3.2% 1252P (lbs)  
MGS: SEAGULL-BAY SUPERSIRE-ET EX90  
MGD: COOKIECUTTER MOM HALO-ET VG88  
365D 35,280M 5.2% 1819F 3.5% 1237P (lbs)



- One of bulls that hits both TPI and BPI.
- He is a complete package +2644 TPI, +303 BPI, type and health.



AOT Blowtorch Healer-ET

## USDA Sire Summary 08/19

Dtrs: G	Herts: G
Milk	1434
%Rel	81
Protein	66 0.08%
Fat	116 0.22%
SCC	2.77
PL	3.6
C/Ease	7.5
DPR	-1.1
SCR	2.2
GL	-3.0
ICC	886

## Australian Genomic ABV 08/19

BPI	303	66%R
HWI	215	59%R
TWI	262	65%R
ASI	204	78%R
Milk	77	
Protein	20kg	0.33%
Fat	42kg	0.56%
SCC	156	
Type	98	
Udder	101	
C/Ease	102	
Fertility	106	

## USDA Type Linear 08/19

TPI: 2644	NMS: 851	No. Dtrs: G	No. Herts: G	%Rel 79
Linear				
Type				1.74
Udder Comp				1.43
Feet & Legs Comp				0.33
Stature				1.65
Strength				1.04
Dairy Form				1.62
Body Depth				1.22
Rump Angle				0.74
Thurl Width				0.23
Legs Side View				0.66
Legs Rear View				0.27
Foot Angle				1.23
Fore Udder Att				1.43
Rear Udder Att H				2.60
Rear Udder Att W				2.39
Udder Cleft				1.46
Udder Depth				0.62
Front Teat Place				1.79
Rear Teat Place				2.16
Teat Length				-0.87

# CRHANDLE

AOT BLOWTORCH HANDLE-ET | BLOWTORCH X SUPERSIRE X MAN-O-MAN

Bull ID: CRHANDLE • Nasis Code: 80FFPAF • HB No: 8403141135006



Sire: SYRYCZUK SILVR BLOWTORCH-ET  
Dam: COOKIECUTTER SSIRE HAS-ET VG87  
365D 38,700M 4.5% 1740F 3.2% 1252P (lbs)  
MGS: SEAGULL-BAY SUPERSIRE-ET EX90  
MGD: COOKIECUTTER MOM HALO-ET VG88  
365D 35,280M 5.2% 1819F 3.5% 1237P (lbs)



- High BPI Blowtorch son from a proven cow family.
- Combines huge production and components with strength, fitness and fertility



AOT Blowtorch Handle-ET

## USDA Sire Summary 08/19

Dtrs: G	Herts: G
Milk	1276
%Rel	81
Protein	59 0.07%
Fat	117 0.25%
SCC	2.89
PL	4.1
C/Ease	8.9
DPR	0.4
SCR	1.3
GL	-4.0
ICC	879

## Australian Genomic ABV 08/19

BPI	305	67%R
HWI	228	59%R
TWI	300	65%R
ASI	183	78%R
Milk	449	
Protein	21kg	0.18%
Fat	44kg	0.36%
SCC	172	
Type	103	
Udder	105	
C/Ease	102	
Fertility	104	

## USDA Type Linear 08/19

TPI: 2714	NMS: 856	No. Dtrs: G	No. Herts: G	%Rel 79
Linear				
Type				2.29
Udder Comp				1.96
Feet & Legs Comp				0.94
Stature				2.37
Strength				1.62
Dairy Form				1.78
Body Depth				1.75
Rump Angle				-0.45
Thurl Width				0.22
Legs Side View				0.35
Legs Rear View				1.00
Foot Angle				1.70
Fore Udder Att				2.22
Rear Udder Att H				3.04
Rear Udder Att W				2.80
Udder Cleft				2.28
Udder Depth				1.63
Front Teat Place				2.10
Rear Teat Place				2.49
Teat Length				-0.44

# BENTLEY

EDG DOOR BENTLEY 8386-ET | DOORMAN X SNOWMAN X ALTABAXTER

Bull ID: BENTLEY • Nasis Code: 80FFKCH • HB No: 8403013474472



SexedULTRA4M

Sire: VAL-BISSON DOORMAN EX90  
Dam: BENNER SNOWMAN BRINKWORTH - VG85  
305D 25,300M 4.7% 11,97F 3.4% 865P (lbs)  
MGS: FLEVO GENETICS SNOWMAN-ET  
MGD: MAPLE WOOD BAXTER BETHANY VG85  
365D 41,325M 4.6% 1920F 3.3% 1347P (lbs)

- The total package Doorman son from the great Gypsy Grand family.
- High type with production and health traits.
- Combines high type and one of our best for semen fertility



MGD: Maple Wood Baker Baxter Bethany VG85

## USDA Sire Summary 08/19

Dtrs: 448	Herts: 190
Milk	682
%Rel	96
Protein	35 0.05%
Fat	47 0.08%
SCC	2.53
PL	4.1
C/Ease	6.7
DPR	-1.6
SCR	2.4
GL	-3.0

## Australian Genomic ABV 08/19

BPI	249	74%R
HWI	230	68%R
TWI	283	74%R
ASI	73	81%R
Milk	100	
Protein	10kg	0.13%
Fat	9kg	0.07%
SCC	187	
Type	106	
Udder	109	
C/Ease	103	
Fertility	105	

## USDA Type Linear 08/19

TPI: 2346	NMS: 511	No. Dtrs: 169	No. Herts: 75	%Rel 94
Linear				
Type				2.66
Udder Comp				2.47
Feet & Legs Comp				1.39
Stature				1.71
Strength				1.85
Dairy Form				2.08
Body Depth				2.13
Rump Angle				-0.07
Thurl Width				1.29
Legs Side View				-0.97
Legs Rear View				1.48
Foot Angle				2.69
Fore Udder Att				3.24
Rear Udder Att H				4.21
Rear Udder Att W				3.87
Udder Cleft				1.32
Udder Depth				1.57
Front Teat Place				0.37
Rear Teat Place				0.12
Teat Length				2.63

# CAHILL

LEXVOLD SS CAHILL-ET | SUPERSHOT X MONTROSS X FACEBOOK

Bull ID: CAHILL • Nasid Code: 80FFNEL • HB No: 8403135087360



SexedULTRA4M

Sire: COGENT SUPERSHOT  
Dam: LEXVOLD MONTROSS CARILLA-ET  
305D 19,990M 4.8% 956F 3.5% 709P (lbs)  
MGS: BACON-HILL MONTROSS-ET EX92  
MGD: LARCREST CAGNEY-ET VG85  
365D 33,420M 4.3% 1426F 3.3% 1117P (lbs)



Lexvold SS Cahill-ET

- Cahill was a new release sire last spring.
- Possibly one of our best all-round sires and value for money.
- This A2 sire will improve fertility, milk, rump angle and teat length.

## USDA Sire Summary 08/19

Dtrs: G	Herts: G
Milk	1978
%Rel	80
Protein	60 0.00%
Fat	48 -0.09%
SCC	2.73
PL	5.9
C/Ease	7.3
DPR	0.5
SCR	N/A
GL	-3.0

## Australian Genomic ABV's 08/19

BPI	224	68%R
HWI	212	61%R
TWI	217	67%R
ASI	56	78%R
Milk	1071	
Protein	22kg	-0.14%
Fat	8kg	-0.54%
SCC	177	
Type	102	
Udder	103	
C/Ease	101	
Fertility	109	

>>  
Larcrest Crimson-ET EX92

## USDA Type Linear 08/19

TPI: 2523	NMS: 687
No. Dtrs: G	No. Herts: G
%Rel 79	
Linear	-2 -1 0 1 2
Type	1.92
Udder Comp	2.63
Feet & Legs Comp	0.93
Stature	1.22
Strength	0.63
Dairy Form	0.52
Body Depth	0.03
Rump Angle	0.63
Thurl Width	0.92
Legs Side View	0.01
Legs Rear View	0.77
Foot Angle	1.03
Fore Udder Att	3.23
Rear Udder Att H	3.57
Rear Udder Att W	3.28
Udder Cleft	0.79
Udder Depth	2.56
Front Teat Place	0.08
Rear Teat Place	-0.04
Teat Length	0.18



# RORY

BLUMENFELD GDANC RORY-ET | GATEDANCER X RUBICON X DAY

Bull ID: RORY • Nasid Code: 80FFNFP • HB No: 8403138510972



Sire: TRIPLECROWN GATEDANCER-ET  
Dam: BLUMENFELD RUBICON 4852  
MGS: EDG RUBICON-ET  
MGD: CO-OP BLUMEN DAY 4292-ET VG87  
305D 30,620M 4.4% 1351F 3.2% 975P (lbs)



Blumenfeld Gdanc Rory-ET

- New semen fertility rockstar with SCR at +3.7!
- Moderate stature, A2/A2, fat and protein test improver, great udders and will lengthen teats.

## USDA Sire Summary 08/19

Dtrs: G	Herts: G
Milk	1572
%Rel	80
Protein	62 0.05%
Fat	102 0.15%
SCC	2.84
PL	5.7
C/Ease	6.2
DPR	-0.8
SCR	3.7
GL	-2.0
ICC	943

## Australian Genomic ABV's 08/19

BPI	207	66%R
HWI	156	58%R
TWI	207	64%R
ASI	129	77%R
Milk	404	
Protein	14kg	0.07%
Fat	39kg	0.31%
SCC	138	
Type	101	
Udder	104	
C/Ease	103	
Fertility	103	

>> MGD: Co-Op Bluemen  
Day 4292-ET VG87

## USDA Type Linear 08/19

TPI: 2662	NMS: 927
No. Dtrs: G	No. Herts: G
%Rel 78	
Linear	-2 -1 0 1 2
Type	1.41
Udder Comp	1.94
Feet & Legs Comp	0.36
Stature	0.75
Strength	-0.33
Dairy Form	1.80
Body Depth	0.17
Rump Angle	0.44
Thurl Width	-0.74
Legs Side View	0.40
Legs Rear View	0.10
Foot Angle	0.37
Fore Udder Att	1.89
Rear Udder Att H	3.04
Rear Udder Att W	2.80
Udder Cleft	1.14
Udder Depth	0.89
Front Teat Place	0.82
Rear Teat Place	1.02
Teat Length	0.59





# STGRANGER

OCD CHARLEY RANGER-ET | CHARLEY X RUBICON X SNOWMOBIL  
Bull ID: STGRANGER • Nasid Code: 80FFNED • HB No: 8403139405979



Sire: DG CHARLEY  
Dam: OCD RUBICON MENNA 33391-ET

SexedULTRA4M

MGS: EDG RUBICON-ET TL TD TV  
MGD: S-S-I SNOWMB MENNA 10054-ET VG-86  
291D 34510M 3.4% 1187F 3.0% 1026P



- An exciting new release Charley son that ticks all the boxes.
- Ideal commercial sire with +5.6 calving ease, moderate stature and fertility.

OCD Charley Ranger-ET

## USDA Sire Summary 08/19

Dtrs: G	Herds: G
Milk	1481
%Rel	79
Protein	54
Fat	61
SCC	2.63
PL	7.2
C/Ease	5.6
DPR	1.6
SCR	0.2
GL	-1.0

## Australian Genomic ABV 08/19

BPI	240	66%R
HWI	244	59%R
TWI	236	65%R
ASI	34	77%R
Milk	671	
Protein	14kg	-0.08%
Fat	2kg	-0.38%
SCC	175	
Type	102	
Udder	103	
C/Ease	105	
Fertility	113	

## USDA Type Linear 08/19

TPI: 2657	NMS: 814	Rel% 77
No. Dtrs: G	No. Herds: G	
Linear	-2 -1 0 1 2	
Type		2.00
Udder Comp		2.06
Feet & Legs Comp		1.57
Stature		0.67
Strength		0.37
Dairy Form		0.73
Body Depth		0.07
Rump Angle		-0.19
Thurl Width		0.62
Legs Side View		-0.16
Legs Rear View		1.93
Foot Angle		0.92
Fore Udder Att		2.52
Rear Udder Att H		2.57
Rear Udder Att W		2.36
Udder Cleft		0.61
Udder Depth		1.85
Front Teat Place		1.46
Rear Teat Place		1.38
Teat Length		-0.58

# CINCO

LARCREST JEDI CINCO-ET | JEDI X HALOGEN X ALTAIOTA  
Bull ID: CINCO • Nasid Code: 80FFNEK • HB No: 8403136439279



Sire: S-S-I MONTROSS JEDI-ET EX91  
Dam: LARCREST CENTERED-ET

MGS: COOKIECUTTER PETRON HALOGEN  
MGD: LARCREST CLAIREN-ET VG85  
365D 32,840M 4.0% 1315F 3.2% 1050P (lbs)



- He ticks all the boxes and our highest milk production sire.
- What everyone is asking for A2, +1.9 DPR, rumps down, adds teat length and black!

Larcrest Jed Cinco-ET

## USDA Sire Summary 08/19

Dtrs: G	Herds: G
Milk	2341
%Rel	80
Protein	69
Fat	50
SCC	2.83
PL	4.6
C/Ease	7.6
DPR	1.9
SCR	0.3
GL	-2.0
ICC	914

## Australian Genomic ABV 08/19

BPI	196	67%R
HWI	159	60%R
TWI	183	66%R
ASI	66	77%R
Milk	663	
Protein	16kg	-0.04%
Fat	13kg	-0.22%
SCC	155	
Type	102	
Udder	103	
C/Ease	101	
Fertility	108	

## USDA Type Linear 08/19

TPI: 2525	NMS: 657	%Rel 48
No. Dtrs: G	No. Herds: G	
Linear	-2 -1 0 1 2	
Type		1.62
Udder Comp		1.65
Feet & Legs Comp		0.37
Stature		1.48
Strength		1.49
Dairy Form		0.48
Body Depth		0.95
Rump Angle		0.26
Thurl Width		0.51
Legs Side View		-1.53
Legs Rear View		0.25
Foot Angle		1.36
Fore Udder Att		1.67
Rear Udder Att H		2.66
Rear Udder Att W		2.45
Udder Cleft		1.41
Udder Depth		1.35
Front Teat Place		0.52
Rear Teat Place		0.71
Teat Length		0.66

# AGRONAUT

MR RUBI-AGRONAUT 73287-ET | RUBICON X SHOTGLASS X SHAMROCK  
Bull ID: AGRONAUT • Nasid Code: 80FFMD4 • HB No: 8403132198315



SexedULTRA4M

Sire: EDG RUBICON-ET  
Dam: TJR VAIL AHMYA 553000-ET  
206D 10,890M 3.8% 411F 3.1% 335P (lbs)  
MGS: BUTZ-BUTLER SHOTGLASS-ET  
MGD: KHW SHAMROCK AHMYA-ET  
305D 24,840M 3.8% 951F 3.2% 802P (lbs)



- Agronaut hits it on both indexes at +2696 TPI and +270 BPI
- High Rubicon son from the same family that produced the legend APPLE but with a difference.

MGD: KHW Goldwyn Aiko-ET

## USDA Sire Summary 08/19

Dtrs: G	Herds: G
Milk	295
%Rel	80
Protein	37
Fat	82
SCC	2.54
PL	7.9
C/Ease	6.5
DPR	1.4
SCR	N/A
GL	-1.0

## Australian Genomic ABV 08/19

BPI	270	68%R
HWI	242	61%R
TWI	299	67%R
ASI	120	78%R
Milk	127	
Protein	10kg	0.13%
Fat	35kg	0.43%
SCC	173	
Type	105	
Udder	109	
C/Ease	103	
Fertility	102	

## USDA Type Linear 08/19

TPI: 2696	NMS: 874	%Rel 78
No. Dtrs: G	No. Herds: G	
Linear	-2 -1 0 1 2	
Type		1.77
Udder Comp		2.22
Feet & Legs Comp		2.24
Stature		0.41
Strength		0.16
Dairy Form		0.36
Body Depth		-0.04
Rump Angle		0.61
Thurl Width		-0.12
Legs Side View		-0.76
Legs Rear View		2.45
Foot Angle		1.95
Fore Udder Att		2.57
Rear Udder Att H		2.76
Rear Udder Att W		2.54
Udder Cleft		0.77
Udder Depth		2.02
Front Teat Place		1.56
Rear Teat Place		1.49
Teat Length		-1.33

TOP 1% OF THE BREED

# BPI PACK

100 STRAWS at \$23+GST PER STRAW



## CHAIRMAN

RRP \$35

Details Page 5

## DOGE

RRP \$32

Details Page 5



## PLEXUS

RRP \$28

Details Page 15



## SUPERGLOW

RRP \$28

Details Page 14



## SKIPPY

RRP \$28

Details Page 15



## SUREROZ

RRP \$28

Details Page 4

Volume can be made up of one bull  
or any multiple bulls.

SEMEN AND PACKS AVAILABLE WHILE STOCKS LAST

# SUPERGLOW

GLOMAR SUPERHERO 1844 | SUPERHERO X SUPERSIRE X ROUMARE

Bull ID: **SUPERGLOW** • Nasid Code: 22FFP06 • HB No: AUS2004290



Sire: ENDCO SUPERHERO-ET  
Dam: GLOMAR SUPERSIRE LADY 5435-ET

MGS: SEAGULL-BAY SUPERSIRE-ET EX90  
MGD: ROUMARE LADY 4100 - EX90



Dam: Glomar Supersire Lady 5435-ET

- Superglow is +327 BPI, with ideal production proof and daughter fertility.
- A Superhero son from the impressive Lady cow family at Glomar.



MGD: Roumare Lady 4100 EX90

### Australian ABVs 08/19

Production 78 %Rel			Health Traits		Workabilities 62 %Rel	
Dtrs: G Herds: G			Survival	109 52 R%	Milking Speed	100
BPI	327	67 %Rel	Res. Surv	100 58 R%	Temperament	103
HWI	255	60 %Rel	C/Ease	100 41 R%	Likeability	104
TWI	314	65 %Rel	C/Count	155 69 R%		
ASI	192		Dtr Fert.	109 53 R%		
Milk	495		Feed Save	-46 32 R%		
Prt	29kg 0.30%		L/weight	102 62 R%		
Fat	22kg 0.02%					

G Dtrs / G Herds 59%Rel		Overall Type		Mam System	
Stature	104	Pin Width	98	Rear Udder (H)	103
Udder Texture	102	Pin Set	101	Rear Udder (W)	99
Bone Quality	103	Foot Angle	99	Centre Ligament	98
Angularity	99	Rear Leg Set	97	F Teat Place.	98
Muzzle Width	98	Rear Side View	98	R Teat Place.	98
Body Depth	97	Udder Depth	105	Teat Length	99
Chest Width	99	Fore Udder At.	102	Loin Strength	99



# PLEXUS

WELCOME PLEXUS-ET | FRAZZLED X DRACO X SUPERSIRE

Bull ID: PLEXUS • Nasid Code: 80FFPG8 • HB No: 8403138817809



Sire: MELARRY JOSUPER FRAZZLED  
Dam: WELCOME DRACO PEACE-ET

MGS: MR COIN DRACO 15006  
MGD: WELCOME SUPERSIRE PERNA  
365D 34,820M 4.2% 1446F 3.3% 1140P (lbs)



- Our No.1 BPI sire at +364 with an ideal production proof and +110 daughter fertility.
- This new release sire will breed you udders everyone wants to milk.

Welcome Plexus-ET

Australian ABVs 08/19

Production 77 %Rel		
Dtrs: G Herds: G		
BPI	364	65 %Rel
HWI	295	58 %Rel
TWI	343	64 %Rel
ASI	190	
Milk	630	
Prt	28kg 0.21%	
Fat	33kg 0.09%	

Health Traits		
Survival	113	48 R%
Res. Surv	104	54 R%
C/Ease	101	46 R%
C/Count	169	68 R%
Dtr Fert.	110	48 R%
Feed Save	-52	30 R%
L/weight	99	58 R%

Workabilities 59 %Rel		
Milking Speed	100	
Temperament	104	
Likeability	106	

G Dtrs / G Herds 55%Rel		
Stature	102	
Udder Texture	103	
Bone Quality	101	
Angularity	96	
Muzzle Width	102	
Body Depth	95	
Chest Width	95	

Overall Type		
Pin Width	103	
Pin Set	101	
Foot Angle	95	
Rear Leg Set	105	
Rear Side View	100	
Udder Depth	107	
Fore Udder At.	102	

Mam System		
Rear Udder (H)	106	
Rear Udder (W)	102	
Centre Ligament	106	
F Teat Place.	98	
R Teat Place.	105	
Teat Length	98	
Loin Strength	103	

# SKIPPY

AARDEMA SKIPPY-ET | JETT X RUBICON X DEAN

Bull ID: SKIPPY • Nasid Code: 80FFNDZ • HB No: 8403133065185



Sire: S-S-I MONTROSS JETT-ET EX90  
Dam: AARDEMA RUBICON 17790-ET GP80

MGS: EDG RUBICON-ET  
MGD: AARDEMA DEAN 3208 VG86  
365D 42,300M 3.1% 1312F 2.9% 1244P (lbs)



- Skippy a solid all-round proof on both the US and Aus system.
- With +1.6 DPR who lowers rum with an ideal balance of stature, strength and black. He is an easy to use bull.

Aardema Skippy-ET

Australian ABVs 08/19

Production 78 %Rel		
Dtrs: G Herds: G		
BPI	296	66 %Rel
HWI	243	59 %Rel
TWI	282	65 %Rel
ASI	149	
Milk	360	
Prt	18kg 0.15%	
Fat	35kg 0.28%	

Health Traits		
Survival	107	51 R%
Res. Surv	95	57 R%
C/Ease	101	60 R%
C/Count	161	69 R%
Dtr Fert.	107	53 R%
Feed Save	-24	31 R%
L/weight	101	60 R%

Workabilities 62 %Rel		
Milking Speed	103	
Temperament	102	
Likeability	105	

G Dtrs / G Herds 57%Rel		
Stature	103	
Udder Texture	101	
Bone Quality	99	
Angularity	99	
Muzzle Width	101	
Body Depth	98	
Chest Width	99	

Overall Type		
Pin Width	95	
Pin Set	103	
Foot Angle	99	
Rear Leg Set	95	
Rear Side View	101	
Udder Depth	104	
Fore Udder At.	104	

Mam System		
Rear Udder (H)	107	
Rear Udder (W)	100	
Centre Ligament	98	
F Teat Place.	97	
R Teat Place.	95	
Teat Length	96	
Loin Strength	97	

# DELISHDION

MR MOGUL DION 15008-ET | MOGUL X ROBUST X PLANET

Bull ID: DELISHDION • Nasid Code: 80FFKBC • HB No: 8403012574855



SexedULTRA4M

Sire: MOUNTFIELD SSI DCY MOGUL-ET EX93  
Dam: MISS OCD ROBST DELICIOUS-ET VG87  
365D 62,941M 3.3% 2100F 3.0% 1894P (lbs)  
MGS: ROYLANE SOCRA ROBUST-ET VG88  
MGD: OCD PLANET DANICA-ET EX93  
365D 39,240M 3.5% 1384F 3.0% 1166P (lbs)



- A full brother to the breed leader sire Delta. This family continues to dominate around the world.
- He is one of our highest BPI sires sitting +327 BPI with some exciting US numbers for calving ease (3755 Obs), DPR and over 1600 daughters.

Dam: Miss OCD Robst Delicious-ET VG87

Australian ABVs 08/19

Production 80 %Rel		
Dtrs: 1599 Herds: 106		
BPI	327	75 %Rel
HWI	279	69 %Rel
TWI	316	74 %Rel
ASI	158	
Milk	277	
Prt	17kg 0.19%	
Fat	37kg 0.36%	

Health Traits		
Survival	111	71 R%
Res. Surv	103	75 R%
C/Ease	103	63 R%
C/Count	175	82 R%
Dtr Fert.	106	80 R%
Feed Save	20	38 R%
L/weight	95	78 R%

Workabilities 73 %Rel		
Milking Speed	103	
Temperament	103	
Likeability	106	

6 Dtrs / 1 Herds 75%Rel		
Stature	96	
Udder Texture	102	
Bone Quality	100	
Angularity	101	
Muzzle Width	101	
Body Depth	95	
Chest Width	95	

Overall Type		
Pin Width	95	
Pin Set	101	
Foot Angle	96	
Rear Leg Set	99	
Rear Side View	98	
Udder Depth	103	
Fore Udder At.	103	

Mam System		
Rear Udder (H)	110	
Rear Udder (W)	98	
Centre Ligament	103	
F Teat Place.	105	
R Teat Place.	103	
Teat Length	94	
Loin Strength	97	

# MACNUT-PP

HULSDALE B MACNUT - PP | ADAGIO P X SCIENCE P x WINDBROOK

Bull ID: MACNUT-PP • Nasid Code: 70FFP70 • HB No: CAN12727329



Sire: STANTONS ADAIGO P-ET  
 Dam: HULSDALE B SCIENCE MALAKI P - VG88  
 389D 25,542M 3.8% 957F 3.2% 811P (lbs)  
 MGS: BRYHILL SCIENCE P  
 MGD: HULSDALE B WINDBROOK MAHALO - EX90  
 473D 30,064M 3.4% 1014F 3.3% 979P (lbs)



Dam: Hulsdale B Science Malaki P - VG88

- An extremely exciting new release Homo-Polled sire with an outcross to most polled bulls.
- He is polled with no sacrifices, high type, A2, robot sire with strong US and Canadian proofs.

## USDA Sire Summary 08/19

Dtrs: G	Hrds: G
Milk	838
%Rel	77
Protein	37 0.04%
Fat	30 0.00%
SCC	2.92
PL	2.8
C/Ease	6.7
DPR	-0.2
SCR	N/A
GL	0.0

## Australian Genomic ABV's 08/19

BPI	187	65%R
HWI	172	58%R
TWI	191	64%R
ASI	75	77%R
Milk	573	
Protein	15kg	0.00%
Fat	15kg	-0.14%
SCC	146	
Type	102	
Udder	104	
C/Ease	100	
Fertility	105	

>>  
Hulsdale B Macnut-PP

## USDA Type Linear 08/19

TPI: 2251	NMS: 418
No. Dtrs: G	No. Hrds: G
Rel% 75	
Linear	-2 -1 0 1 2
Type	2.42
Udder Comp	2.02
Feet & Legs Comp	1.80
Stature	2.79
Strength	0.96
Dairy Form	1.60
Body Depth	0.96
Rump Angle	0.51
Thurl Width	1.36
Legs Side View	-0.03
Legs Rear View	1.79
Foot Angle	1.88
Fore Udder Att	2.73
Rear Udder Att H	3.27
Rear Udder Att W	3.01
Udder Cleft	1.10
Udder Depth	2.54
Front Teat Place	-0.12
Rear Teat Place	-0.18
Teat Length	-0.37



# NEILPP

NEIL PP RF | MISSION P X POWERBALL X LADD P RED

Bull ID: NEILPP • Nasid Code: 94FFP15 • HB No: FRA7262955840



Sire: MISSION P  
 Dam: NL747281544

MGS: POWERBALL  
 MGD: IVANA



Neil PP RF

- New release Homo Polled bull who is one of the highest type and udder PP bulls in Europe.
- Positive for fertility, longevity, milking speed and temperament.

## French Breeding Values 08/19

Dtrs: G	Hrds: G
ISU	178 70%R
INEL	49
Milk	767
Protein	40kg 1.7%
Fat	39kg 1.2%
SCC	0.5
Cow Fertility	1.1
Heifer Fertility	0.5
Longevity	1.5
Calving Ease	88
Calving Ability	94
Milking Speed	0.4
Temperament	0.6

## Australian Genomic ABV's 08/19

BPI	176	62%R
HWI	147	55%R
TWI	169	60%R
ASI	84	74%R
Milk	704	
Protein	20kg	0.02%
Fat	8kg	-0.32%
SCC	138	
Type	101	
Udder	103	
C/Ease	101	
Fertility	103	

>>  
MGD: Gazelle 55

## French Type Linear 08/19

Dtrs: G	Hrds: G	69%Rel
Linear	-2 0 2	
Overall Type		2.8
Udder Comp		3.0
Body Comp		1.4
Feet & Legs Comp		0.1
Stature		1.9
Chest Width		0.9
Body Depth		0.5
Body Condition		0.4
Dairy Form		1.3
Thurl Width		2.0
Rump Angle		-0.2
Udder Cleft		1.4
Udder Depth		2.8
Udder Balance		1.6
Fore Udder Att.		3.0
Rear Udder Att.		1.9
Front Teat Place.		1.0
Rear Teat Place.		1.7
Teat Length		0.5
Rear Leg Side View		0.3
Rear Leg Rear View		-0.5
Foot Angle		0.0
Locomotion		0.4





# ADLONP

ADLON P | ADAGIO X RUBICON X JACKMAN

Bull ID: ADLONP • Nasid Code: 93FFP22 • HB No: DEU360175103



Sire: STANTONS ADAIGO 508187  
Dam: BRITNEY 58110898  
200D 6,374M 4.58% 292F 3.56% 227P (lbs)  
MGS: EDG RUBICON-ET  
MGD: BRENDIA 57210368



Adlon P

- A German A2/A2 polled sire who is a global index leader.
- He also sits at +308 for BPI in Australia



## German Breeding Values 08/19

Dtrs: G Hds: G 73%Rel		
RZG	141	
RZM	122	
Milk	75	
Protein	28kg	0.27%
Fat	34kg	0.33%
Dairy	107	
F&L	116	
Udder	134	
RZE	133	
Dtrs: G Hds: G 63%Rel		
Longevity	123	
Dtr Fert.	122	
CE (Dtr)	125	
CE (Sire)	98	
SCC	123	
Milkability	99	

## German Type Linear 08/19

Linear	90	100	110
Stature			125
Strength			110
Body Depth			106
Dairy Character			107
Rump Angle			102
Rump Width			119
Legs - Rear View			112
Legs - Side View			100
Foot Angle			103
Hocks			110
Locomotion			110
Udder Depth			131
Fore Udder Att.			128
Rear Udder Att.			126
Ligament			98
Front Teat Place.			110
Rear Teat Place.			104
Teat Length			107

## Australian Genomic ABV's 08/19

BPI	HWI	TWI	ASI	Type	Udder	Milk	Protein	Fat	SCC	Calving Ease	Dtr Fertility
308 65%R	263 58%R	305 63%R	142	105	106	614	24kg 0.13%	23kg -0.05%	153	101	110

# CHILIPEPPER-P

MR POWER CHILI PEPPER - P-ET | POWERBALL-P X SUPERSIRE X OBSERVER

Bull ID: CHILIPEPPER • Nasid Code: 80FFMEH • HB No: 8403129037649



Sire: VIEW-HOME POWERBALL-P-ET  
Dam: LARCREST CANTO-ET VG88  
365D 39,660M 4.0% 1568F 3.1% 1243P (lbs)  
MGS: SEAGULL-BAY SUPERSIRE-ET EX90  
MGD: LARCREST CALE-ET VG89  
365D 46,390M 5.3% 2448F 3.6% 1620P (lbs)



MGD: Larcrest Cale-ET VG89

- The commercial farmers dream, black, calving ease, health and fertility.
- He has an ideal type proof, is easy to use improving rump and teat length. He's A2/A2 and will improve production.

## USDA Sire Summary 08/19

Dtrs: 32 Hds: 17		
Milk	1561	
%Rel	80	
Protein	63	0.05%
Fat	50	-0.03%
SCC	2.83	
PL	3.9	
C/Ease	6.4	
DPR	-0.3	
SCR	N/A	
GL	-3.0	
ICC	576	

## Australian Genomic ABV 08/19

BPI	228	69%R
HWI	193	62%R
TWI	203	68%R
ASI	109	%R
Milk	684	
Protein	24kg	0.11%
Fat	5kg	-0.35%
SCC	147	
Type	101	
Udder	102	
C/Ease	102	
Fertility	106	

## USDA Type Linear 08/19

TPI: 2364	NMS: 596				
No. Dtrs: 0	No. Herds: 0			Rel% 80	
Linear	-2	-1	0	1	2
Type					1.34
Udder Comp					1.06
Feet & Legs Comp					-0.14
Stature					1.70
Strength					0.44
Dairy Form					2.09
Body Depth					0.88
Rump Angle					0.47
Thurl Width					1.54
Legs Side View					1.35
Legs Rear View					-0.41
Foot Angle					-0.19
Fore Udder Att					1.28
Rear Udder Att H					1.98
Rear Udder Att W					1.82
Udder Cleft					0.67
Udder Depth					1.02
Front Teat Place					0.51
Rear Teat Place					0.64
Teat Length					0.67

# POINTP

POINT P | POWERBALL-P X NUMERO UNO X TIME

Bull ID: POINTP • Nasid Code: 90FFM28 • HB No: NLD756516880



Sire: VIEW-HOME POWERBALL-P-ET  
Dam: TIR-AN N.U NYALA  
305D 10,792M 4.14% 447F 3.51% 379P (lbs)  
MGS: AMIGHETTI NUMERO UNO-ET EX90  
MGD: TIRSVAD BT NOMA



Point P

- PointP ranks amongst the highest POLLED and BPI Sires in the breed
- +309 BPI with positive components. In his country of origin Germany he is one of the best for CE and fertility and will add teat length.



## German Breeding Values 08/19

Dtrs: G Hds: G 76%Rel		
RZG	128	
RZM	124	
Milk	549	
Protein	28kg	0.1%
Fat	43kg	0.22%
Dairy	117	
F&L	92	
Udder	118	
RZE	112	
Dtrs: G Hds: G 67%Rel		
Longevity	108	
Dtr Fert.	118	
CE (Dtr)	114	
CE (Sire)	117	
SCC	110	
Milkability	104	

## German Type Linear 08/19

Linear	90	100	110
Stature			132
Strength			99
Body Depth			107
Dairy Character			115
Rump Angle			103
Rump Width			117
Legs - Rear View			87
Legs - Side View			105
Foot Angle			101
Hocks			97
Locomotion			93
Udder Depth			110
Fore Udder Att.			104
Rear Udder Att.			119
Ligament			108
Front Teat Place.			104
Rear Teat Place.			106
Teat Length			110

## Australian Genomic ABV's 08/19

BPI	HWI	TWI	ASI	Type	Udder	Milk	Protein	Fat	SCC	Calving Ease	Dtr Fertility
309 69%R	284 63%R	287 68%R	122	101	106	350	18kg 0.16%	18kg 0.05%	149	104	111

# JEDIFY

NO-FLA JEDIFY-ET | JEDI X ALTAGENUITY X STOKES

Bull ID: JEDIFY • Nasid Code: 80FFNCY • HB No: 8403135669646



Sire: S-S-I MONTROSS JEDI-ET EX91  
 Dam: NO-FLA GENUITY SAM 38859-ET  
 303D 19,060M 4.1% 780F 3.2% 605P (lbs)  
 MGS: NO-FLA GENUITY-ET  
 MGD: NO-FLA STOKES NADIYAH 33553  
 321D 29,050M 4.4% 1290F 3.3% 971P (lbs)



- Jedify epitomises what a lot of commercial dairy producers are asking for; DPR and calving ease with a good ratio of strength to stature and Black!
- Over 300 for BPI with a solid USA Type Proof of +1 type and +1.61 udders

No-Fla Jedyfy-ET

Australian ABVs 08/19

Production 78 %Rel			Health Traits			Workabilities 64 %Rel		
Dtrs: G	Herts: G		Survival	109	52 R%	Milking Speed	102	
BPI	310	67 %Rel	Res. Surv	99	58 R%	Temperament	102	
HWI	291	60 %Rel	C/Ease	103	39 R%	Likeability	104	
TWI	261	65 %Rel	C/Count	161	69 R%			
ASI	116		Dtr Fert.	114	54 R%			
Milk	147		Feed Save	148	32 R%			
Prt	16kg 0.23%		L/weight	95	62 R%			
Fat	11kg 0.07%							

G Dtrs / G Herts	59%Rel	Overall Type	98	Mam System	99
Stature	95	Pin Width	90	Rear Udder (H)	106
Udder Texture	96	Pin Set	94	Rear Udder (W)	94
Bone Quality	103	Foot Angle	93	Centre Ligament	102
Angularity	94	Rear Leg Set	97	F Teat Place.	95
Muzzle Width	91	Rear Side View	102	R Teat Place.	100
Body Depth	94	Udder Depth	108	Teat Length	98
Chest Width	99	Fore Udder At.	101	Loin Strength	101

# BERRYBLAK

CO-OP AARDEMA BERRY BLAK-ET | SOLARIS X STOIC X NUMERO UNO

Bull ID: BERRYBLAK • Nasid Code: 80FFPAH • HB No: 8403138766425



Sire: SEAGULL-BAY-MJ SOLARIS-ET  
 Dam: CO-OP STOIC 6895 7724-ET GP83 VG-MS  
 185D 15,560M 4.2% 658F 3.4% 526P (lbs)  
 MGS: SPRUCE-HAVEN STOIC-ET  
 MGD: CO-OP UNO CLASSY 6895-ET VG85  
 305D 25,030M 5.6% 1411F 3.4% 840P (lbs)



- A outcross sire with high BPI and TPI. He will add production, components, fertility and is calving ease.
- He is great value in our Budget Pack pack and he sits at over +2653 TPI, + DPR.

Co-op Aardema Berry Blak

Australian ABVs 08/19

Production 78 %Rel			Health Traits			Workabilities 63 %Rel		
Dtrs: G	Herts: G		Survival	110	51 R%	Milking Speed	102	
BPI	289	66 %Rel	Res. Surv	106	57 R%	Temperament	101	
HWI	246	59 %Rel	C/Ease	103	34 R%	Likeability	103	
TWI	244	65 %Rel	C/Count	165	69 R%			
ASI	134		Dtr Fert.	111	53 R%			
Milk	88		Feed Save	33	31 R%			
Prt	14kg 0.23%		L/weight	96	60 R%			
Fat	25kg 0.30%							

G Dtrs / G Herts	57%Rel	Overall Type	99	Mam System	99
Stature	100	Pin Width	104	Rear Udder (H)	105
Udder Texture	108	Pin Set	95	Rear Udder (W)	97
Bone Quality	109	Foot Angle	98	Centre Ligament	105
Angularity	98	Rear Leg Set	105	F Teat Place.	88
Muzzle Width	98	Rear Side View	99	R Teat Place.	94
Body Depth	93	Udder Depth	103	Teat Length	98
Chest Width	93	Fore Udder At.	99	Loin Strength	97

# SCORPION

CO-OP DAMARIS SCORPION-ET | DAMARIS X MIDNIGHT X NUMERO UNO

Bull ID: SCORPION • Nasid Code: 80FFNE2 • HB No: 8403132633023



Sire: S-S-I STERLING DAMARIS-ET  
 Dam: CO-OP MIDNIGHT 6886 7712-ET  
 MGS: S-S-I EPIC MIDNIGHT-ET  
 MGD: CO-OP UNO SYDNEY 6886-ET VG-88  
 305D 31780M 4.8% 1531F 3.4% 1076P



- He is an A2 production sire with good udders.
- You will find him with some great value in the Budget Pack.

Scorpion

Australian ABVs 08/19

Production 78 %Rel			Health Traits			Workabilities 60 %Rel		
Dtrs: G	Herts: G		Survival	112	53 R%	Milking Speed	102	
BPI	277	66 %Rel	Res. Surv	108	59 R%	Temperament	102	
HWI	241	59 %Rel	C/Ease	102	52 R%	Likeability	104	
TWI	268	65 %Rel	C/Count	155	69 R%			
ASI	132		Dtr Fert.	107	55 R%			
Milk	458		Feed Save	41	31 R%			
Prt	22kg 0.18%		L/weight	96	60 R%			
Fat	14kg -0.08%							

G Dtrs / G Herts	57%Rel	Overall Type	103	Mam System	104
Stature	98	Pin Width	100	Rear Udder (H)	107
Udder Texture	101	Pin Set	91	Rear Udder (W)	100
Bone Quality	100	Foot Angle	100	Centre Ligament	103
Angularity	97	Rear Leg Set	99	F Teat Place.	99
Muzzle Width	99	Rear Side View	103	R Teat Place.	96
Body Depth	93	Udder Depth	108	Teat Length	95
Chest Width	97	Fore Udder At.	103	Loin Strength	95



# CBUNSTOPABUL

RIVERDOWN UNSTOPABULL | AVALANCHE\*RC X APPLEJACK-RED X NIAGRA

Bull ID: CBUNSTOPABUL • Nasid Code: 70FFN58 • HB No: CAN11801450



SEXED

Sire: DYMENTHOLM MR APPLES AVALANCHE  
Dam: CHERRY CREST THAT'S NEAT - EX91  
395D 15,581M 4.4% 684F 3.5% 537P (lbs)  
MGS: MARBI APPLEJACK RED  
MGD: SERENITYHILL NIAGRA ROZ - EX90 2E



Dtr: Riverdown Unstopabull Attack - 1st Summer Calf, Royal 2018

- Possibly one of the best red bulls in the breed.
- With a DPR of +1.7 positive milk, productive life and extreme type he has something we don't see to often, and the ability to make that special red one every time.

# BSMASTER

GOLDEN OAKS MASTER-ET | AVALANCHE X DOORMAN X GOLDWYN

Bull ID: BSMMASTER • Nasid Code: 80FFPGB • HB No: 8403139216917



Sire: DYMENTHOLM MR APPLES AVALANCHE  
Dam: DROLIE DOORMAN MAYCY  
MGS: VAL-BISSON DOORMAN  
MGD: BONACCUEIL MAYA GOLDWYN



Dam: Drolie Doorman Maycy

- One of the highest type bulls we have ever released in Australia with a big time cow family.
- With a show winning dam and Expo Grand Champion Gdam, he will make the special ones.

## USDA Sire Summary 08/19

Dtrs: G	Herts: G
Milk	382
%Rel	80
Protein	11 0.00%
Fat	23 0.03%
SCC	2.81
PL	3.2
C/Ease	9.1
DPR	1.7
GL	-1.0

## USDA Type Linear 08/19

TPI: 2302	NMS: 366	Rel% 78
No. Dtrs: G	No. Herts: G	
Linear	-2 -1 0 1 2	
Type		3.46
Udder Comp		3.36
Feet & Legs Comp		2.28
Stature		3.46
Strength		1.56
Dairy Form		1.40
Body Depth		1.58
Rump Angle		0.78
Thurl Width		1.46
Legs Side View		-0.51
Legs Rear View		2.47
Foot Angle		3.23
Fore Udder Att		3.92
Rear Udder Att H		4.82
Rear Udder Att W		4.43
Udder Cleft		2.43
Udder Depth		3.84
Front Teat Place		1.74
Rear Teat Place		1.25
Teat Length		-0.78

## Australian Genomic ABV's 08/19

BPI	130	66%R
HWI	138	59%R
TWI	138	65%R
ASI	-6	78%R
Milk	268	
Protein	3kg	-0.09
Fat	2kg	-0.14
SCC	144	
Type	102	
Udder	108	
C/Ease	100	
Fertility	100	



Riverdown Unstopabull

## USDA Sire Summary 08/19

Dtrs: G	Herts: G
Milk	373
%Rel	79
Protein	15 0.01%
Fat	37 0.08%
SCC	2.79
PL	0.4
C/Ease	11.1
DPR	-2.7
SCR	N/A
GL	0.0

## Australian Genomic ABV's 08/19

BPI	125	32%R
HWI	103	30%R
TWI	166	32%R
ASI	36	34%R
Milk	102	
Protein	5kg	0.04
Fat	7kg	0.04
SCC	150	
Type	106	
Udder	107	
C/Ease	100	
Fertility	101	

## USDA Type Linear 08/19

TPI: 2189	NMS: 251	Rel% 79
No. Dtrs: G	No. Herts: G	
Linear	-2 -1 0 1 2	
Type		4.31
Udder Comp		3.69
Feet & Legs Comp		2.17
Stature		4.30
Strength		2.81
Dairy Form		3.02
Body Depth		3.38
Rump Angle		0.55
Thurl Width		2.94
Legs Side View		0.53
Legs Rear View		2.61
Foot Angle		3.16
Fore Udder Att		4.71
Rear Udder Att H		5.52
Rear Udder Att W		5.08
Udder Cleft		2.83
Udder Depth		3.64
Front Teat Place		2.18
Rear Teat Place		2.13
Teat Length		0.09



MGD: Bonaccueil Maya Goldwyn



# CALVADOS

**BLONDIN C CALVADOS | CALLEN X NUMERO UNO X DAMION**

Bull ID: **CALVADOS** • Nasid Code: **70FFP57** • HB No: **CAN110296904**



Sire: **OCD 1STCLASS CALLEN-ET**  
Dam: **BUTLVIEW UNO CARD-ET VG88 2YR**

MGS: **AMIGHETTI NUMERO UNO-ET EX90**  
MGD: **SILVERMAPLE DAMION CAMOMILE EX94**  
365D 32,268M 4.1% 1327F 3.4% 1098P (lbs)



- An new exciting release sire. He is a G son of the great Silvermaple Damion Camomile the 3 times All-American or All-Canadian.
- You don't see these every day bulls with high type combined with DPR.

MGD: Silvermaple Damion Camomile EX94

## USDA Sire Summary 08/19

Dtrs: G	Herts: G
Milk	-243
%Rel	79
Protein	9 0.06%
Fat	37 0.17%
SCC	2.60
PL	3.9
C/Ease	7.1
DPR	2.6
SCR	N/A
GL	1.0

## Australian Genomic ABV 08/19

BPI	148	30%R
HWI	140	28%R
TWI	168	30%R
ASI	26	33%R
Milk	116	
Protein	3kg	-0.01
Fat	10kg	0.08
SCC	148	
Type	103	
Udder	106	
C/Ease	102	
Fertility	104	

## USDA Type Linear 08/19

TPI: 2337	NMS: 442	Rel% 76
No. Dtrs: G	No. Herts: G	
Linear	-2 -1 0 1 2	
Type		2.93
Udder Comp		2.89
Feet & Legs Comp		1.21
Stature		3.04
Strength		0.95
Dairy Form		2.31
Body Depth		1.29
Rump Angle		-0.13
Thurl Width		1.92
Legs Side View		-0.98
Legs Rear View		0.83
Foot Angle		2.61
Fore Udder Att		3.37
Rear Udder Att H		4.01
Rear Udder Att W		3.69
Udder Cleft		3.06
Udder Depth		3.13
Front Teat Place		1.84
Rear Teat Place		2.49
Teat Length		0.42

# STGHISTORY

**LINDENRIGHT HISTORY | DOBERMAN X CAPITAL GAIN X MAN-O-MAN**

Bull ID: **STGHISTORY** • Nasid Code: **70FFN68** • HB No: **CAN12470245**



Sire: **DG DOBERMAN**  
Dam: **VOGUE CGAIN HOPSTOCH - VG88**  
374D 39,268M 4.4% 1713F 3.3% 1296P (lbs)

MGS: **STANTONS CAPITAL GAIN - VG86**  
MGD: **COOKIECUTTER MOM HUE-ET VG88**  
365D 28,878M 4.3% 1230F 3.6% 1049P (lbs)



- A unique sire with extreme type, production with an outcross pedigree.
- He will improve rump, add strength and udder depth, all this with elite type and calving ease.

Lindenright History

## USDA Sire Summary 08/19

Dtrs: G	Herts: G
Milk	969
%Rel	79
Protein	41 0.04%
Fat	32 -0.01%
SCC	2.69
PL	1.9
C/Ease	7.2
DPR	-1.4
SCR	N/A
GL	-3.0

## Australian Genomic ABV 08/19

BPI	225	67%R
HWI	202	60%R
TWI	261	66%R
ASI	83	78%R
Milk	592	
Protein	19kg	0.07
Fat	5kg	-0.03
SCC	162	
Type	107	
Udder	108	
C/Ease	102	
Fertility	103	

## USDA Type Linear 08/19

TPI: 2288	NMS: 402	Rel% 78
No. Dtrs: G	No. Herts: G	
Linear	-2 -1 0 1 2	
Type		3.25
Udder Comp		2.95
Feet & Legs Comp		0.53
Stature		3.25
Strength		1.89
Dairy Form		1.89
Body Depth		1.80
Rump Angle		0.71
Thurl Width		1.59
Legs Side View		0.15
Legs Rear View		0.92
Foot Angle		1.60
Fore Udder Att		4.34
Rear Udder Att H		3.56
Rear Udder Att W		3.28
Udder Cleft		2.58
Udder Depth		4.07
Front Teat Place		2.24
Rear Teat Place		2.76
Teat Length		-1.08

# BLONDRAPTOR

**BLOND RAPTOR | SOLOMON X BEEMER X REGINALD**

Bull ID: **BLONDRAPTOR** • Nasid Code: **70FFN87** • HB No: **CAN110296584**



Sire: **WALNUTLAWN SOLOMON**  
Dam: **RYAN-MVLOO BEEMER RAPTURE - VG85**  
306D 16,645M 4.8% 800F 3.6% 595P (lbs)

MGS: **POL BUTTE MC BEEMER - EX92**  
MGD: **RYAN-VU REGIN RAZ A TAZ - EX93**  
278D 21,740M 4.3% 930F 3.5% 752P (lbs)



- Raptor calves are creating excitement in the calf pens of some of the best herds in the world.
- The bull that can make that special one with extreme rear udder, fore udder, strength and body depth.

MGD: Ryan-Vu Regin Raz A Taz EX93

## USDA Sire Summary 08/19

Dtrs: G	Herts: G
Milk	-107
%Rel	79
Protein	5 0.03%
Fat	10 0.09%
SCC	3.01
PL	-1.6
C/Ease	10.1
DPR	-2.9
SCR	N/A
GL	0.0

## Australian Genomic ABV 08/19

BPI	100	42%R
HWI	90	38%R
TWI	149	42%R
ASI	13	47%R
Milk	226	
Protein	4kg	-0.04
Fat	5kg	-0.07
SCC	128	
Type	105	
Udder	109	
C/Ease	100	
Fertility	102	

## USDA Type Linear 08/19

TPI: 1913	NMS: 45	Rel% 78
No. Dtrs: G	No. Herts: G	
Linear	-2 -1 0 1 2	
Type		4.04
Udder Comp		2.85
Feet & Legs Comp		1.69
Stature		4.84
Strength		2.73
Dairy Form		3.08
Body Depth		3.40
Rump Angle		1.35
Thurl Width		2.14
Legs Side View		-0.34
Legs Rear View		2.25
Foot Angle		3.20
Fore Udder Att		4.51
Rear Udder Att H		3.89
Rear Udder Att W		3.58
Udder Cleft		3.58
Udder Depth		3.71
Front Teat Place		2.62
Rear Teat Place		2.74
Teat Length		-0.26



# THUNDERSTORM

BLONDIN THUNDER STORM | JACOBY X BEEMER X BOLTON

Bull ID: THUNDERSTORM • Nasis Code: 70FFP58 • HB No: CAN110296922



Sire: CYCLE DOORMAN JACOBY-ET EX90  
Dam: SHEEKNOLL BEEMER 2597-ET VG85  
366D 24,689M 4.0% 974F 3.3% 818P (lbs)  
MGS: POL BUTTE MC BEEMER - EX92  
MGD: SHEEKNOLL BOLTON ARIANA - EX94  
422D 35,891M 4.6% 1645F 3.5% 1272P (lbs)

SEXED



- Has been No.1 type sire in 5 countries and some of the world best show cows are getting bred to him.
- 6 generations of VG and EX dams combined with extreme udder traits.

Dam: Sheeknoll Beemer 2597-ET VG85

## USDA Sire Summary 08/19

Dtrs: G	Herts: G
Milk	274
%Rel	79
Protein	8
Fat	5
SCC	2.84
PL	0.5
C/Ease	9.2
DPR	-2.4
SCR	N/A
GL	-2.0

## Australian Genomic ABV 08/19

BPI	69	32%R
HWI	73	30%R
TWI	118	32%R
ASI	-22	34%R
Milk	256	
Protein	0kg	-0.14
Fat	3kg	-0.11
SCC	149	
Type	105	
Udder	108	
C/Ease	100	
Fertility	100	

## USDA Type Linear 08/19

TPI: 1989	NMS: 89				
No. Dtrs: G	No. Herds: G			Rel% 77	
Linear	-2	-1	0	1	2
Type					4.34
Udder Comp					3.28
Feet & Legs Comp					2.18
Stature					4.71
Strength					2.14
Dairy Form					3.35
Body Depth					2.66
Rump Angle					0.85
Thurl Width					3.48
Legs Side View					-0.58
Legs Rear View					2.67
Foot Angle					3.24
Fore Udder Att					4.59
Rear Udder Att H					4.73
Rear Udder Att W					4.35
Udder Cleft					2.58
Udder Depth					4.32
Front Teat Place					2.41
Rear Teat Place					2.51
Teat Length					-1.07

# CBCHILL

CRASDALE CHILL | HIGH OCTANE X NUMERO UNO X ATWOOD

Bull ID: CBCHILL • Nasis Code: 70FFM73 • HB No: CAN12260114



Sire: STANTONS HIGH OCTANE - EX93  
Dam: EDG CLAIRE CLING-ET VG85  
188D 17,013M 4.3% 729F 3.4% 582P (lbs)  
MGS: AMIGHETTI NUMERO UNO-ET EX90  
MGD: PINE-SHELTER CLAIRE WOOD-ET VG87  
365D 32,390M 4.2% 1346F 3.0% 975P (lbs)



- From the high profile Pine-Shelter "C" family that have produced so many bulls and great females.
- He is outstanding for calving ease - something that we don't see a lot with extreme type. Will add strength, body depth and improve rumps.

MGD: Pine-Shelter Claire Wood-ET VG87

## USDA Sire Summary 08/19

Dtrs: G	Herts: G
Milk	-46
%Rel	80
Protein	7
Fat	11
SCC	2.69
PL	2.4
C/Ease	6.0
DPR	0.1
GL	-1.0

## Australian Genomic ABV 08/19

BPI	161	69%R
HWI	133	63%R
TWI	176	69%R
ASI	38	79%R
Milk	451	
Protein	10kg	-0.05
Fat	9kg	-0.14
SCC	172	
Type	102	
Udder	107	
C/Ease	103	
Fertility	103	

## USDA Type Linear 08/19

TPI: 2078	NMS: 217				
No. Dtrs: G	No. Herds: G		Rel% 79		
Linear	-2	-1	0	1	2
Type					3.14
Udder Comp					2.76
Feet & Legs Comp					1.04
Stature					3.66
Strength					1.93
Dairy Form					1.94
Body Depth					2.20
Rump Angle					0.97
Thurl Width					2.92
Legs Side View					0.60
Legs Rear View					1.21
Foot Angle					1.71
Fore Udder Att					3.56
Rear Udder Att H					3.86
Rear Udder Att W					3.55
Udder Cleft					2.61
Udder Depth					3.58
Front Teat Place					1.75
Rear Teat Place					2.04
Teat Length					-0.50

# AWESOMERED

LUCK-E ABSOLUTE AWESOME - RED \*RC \*CV | ABSOLUTE-RED X ADVENT-RED X BLITZ

Bull ID: AWESOMERED • Nasis Code: 80FFK90 • HB No: USA72186769



SexedULTRA4M

Sire: APPLES ABSOLUTE - RED ET \*CV EX94  
Dam: LUCK-E ADVENT ASIA-ET \*RC EX94  
365D 32,680M 5.7% 1863F 3.4% 1107P (lbs)  
MGS: KWH KITE ADVENT - RED-ET EX94  
MGD: LUCK-E BLITZ AUSTRALIA-ET VG87  
365D 37,990M 4.0% 1528F 3.0% 1132P (lbs)



- Leading the way in the black and red ring, combining Apple EX96 and Asia EX94 in one pedigree
- Now with milking daughters and breed leading rear udders, plus he also adds amazing strength.

Daughter: Bluechip EV Shesawesome Apple VG86. Owned by Cherrylock Cattle Co.

## USDA Sire Summary 08/19

Dtrs: 1030	Herts: 482
Milk	-1281
%Rel	98
Protein	-39
Fat	-37
SCC	3.11
PL	-0.7
C/Ease	10.0
DPR	-1.9
GL	1.0

## Australian Genomic ABV 08/19

BPI	-123	79%R
HWI	-47	72%R
TWI	-15	77%R
ASI	-215	87%R
Milk	-508	
Protein	-29kg	-0.28%
Fat	-38kg	-0.23%
SCC	118	
Type	111	
Udder	116	
C/Ease	97	
Fertility	102	

## USDA Type Linear 08/19

TPI: 1482		NMS: -293			
No. Dtrs: 567		No. Herds: 293		Rel% 98	
Linear	-2	-1	0	1	2
Type					2.96
Udder Comp					4.24
Feet & Legs Comp					1.52
Stature					1.81
Strength					1.33
Dairy Form					0.88
Body Depth					1.38
Rump Angle					0.05
Thurl Width					3.22
Legs Side View					-0.70
Legs Rear View					2.36
Foot Angle					2.03
Fore Udder Att					4.96
Rear Udder Att H					5.73
Rear Udder Att W					5.27
Udder Cleft					2.23
Udder Depth					3.62
Front Teat Place					1.95
Rear Teat Place					2.28
Teat Length					-1.58



# GENOMIC PACK BULLS

**\$18+GST PER STRAW MINIMUM 50 STRAWS**

CAN BE MADE UP OF ONE BULL OR ANY MULTIPLE OF BULLS – SEMEN AND PACKS AVAILABLE WHILST STOCK LAST

GENOMIC PACK



**RORY**

Details Page 12



**CAHILL**

Details Page 12



**CINCO**

Details Page 13



**SUPERGLOW**

Details Page 14



**CHILL**

Details Page 21



**NOLAN**

Details Page 6



**DILLYDILLY**

Details Page 7



**HEALER**

Details Page 11



**NEILPP**

Details Page 16

# BUDGET PACK BULLS

**\$14+GST PER STRAW MINIMUM 100 STRAWS**

CAN BE MADE UP OF ONE BULL OR ANY MULTIPLE OF BULLS – SEMEN AND PACKS AVAILABLE WHILST STOCK LAST

BUDGET PACK



**RAY**



**GATEDANCER**



**BLOWTORCH**



**ZEPHIR**



**FLAMER**



**SCORPION** Page 18



**TETHRA**



**TRAVLINMAN**



**BERRYBLAK** Page 18





# **BEEF UP** *your profit margins...*

With recent advancements in Genomic testing and Sexed Ultra 4M semen, it is now easier than ever to maximise farm profits by using varying semen strategies combining both sexed and conventional Dairy semen with Beef semen.

Using sexed semen over your best females will result in higher quality replacements and alternatively a beef-on-dairy program over your bottom end will result in maximising your revenue from the total number of calves born on the dairy.

**Talk to Agri-Gene about Genex's Calf Math program and our range of proven calving ease beef sires from all beef breeds.**

## **ANGUS**



PATHFINDER COMPLETE K22

## **BRAHMAN**



JDH SIR JEROME MANSO 224/4

## **CHAROLAIS EXCELLENCE**



FARENNE

## **POLL HERFORD**



BOYD MASTERPIECE 0220

## **INRA**



HARIBO

## **LIMOUSIN**



POSTHAVEN P ZANSIBAR – \*HP

## **MURRAY GEY**



TARLINA COOMUNGA C57

## **SPECKLE PARK**



HANGING ROCK HALDOR

## **WAGYU**



GOORAMBAT TERUTANI F146

*... Breed the bottom to* **BEEF**



# PROTECT YOUR CALVES

from the bitter cold with **CALF COATS!**



- ❖ Available in three sizes
- ❖ Breathable and waterproof with a quilted inner lining
- ❖ Easy to put on and take off –  
Velcro closure on the front and buckle leg straps
- ❖ Amish handcrafted in the USA
- ❖ Machine washable

## AGRI-GENE PTY LTD

123-125 Tone Road, Wangaratta Victoria 3677

P 03 5722 2666  
F 03 5722 2777

info@agrigene.com.au

www.agrigene.com.au



zoetis

## CLARIFIDE ALLOWS INFORMED SELECTION & BREEDING DECISIONS



Select  
your best  
replacement  
animals

Increase  
the rate of  
genetic gain

Avoid  
the expense of  
raising genetically  
inferior animals

Better allocation  
of higher value  
or sexed semen

For more information on CLARIFIDE Testing, please contact your local Genetics Professional Sales Representative:  
NSW & QLD – Lachlan Ayoub 0437 226 122 | VIC, TAS, SA & WA – Jake Bourne 0419 664 834

**CLARIFIDE®**

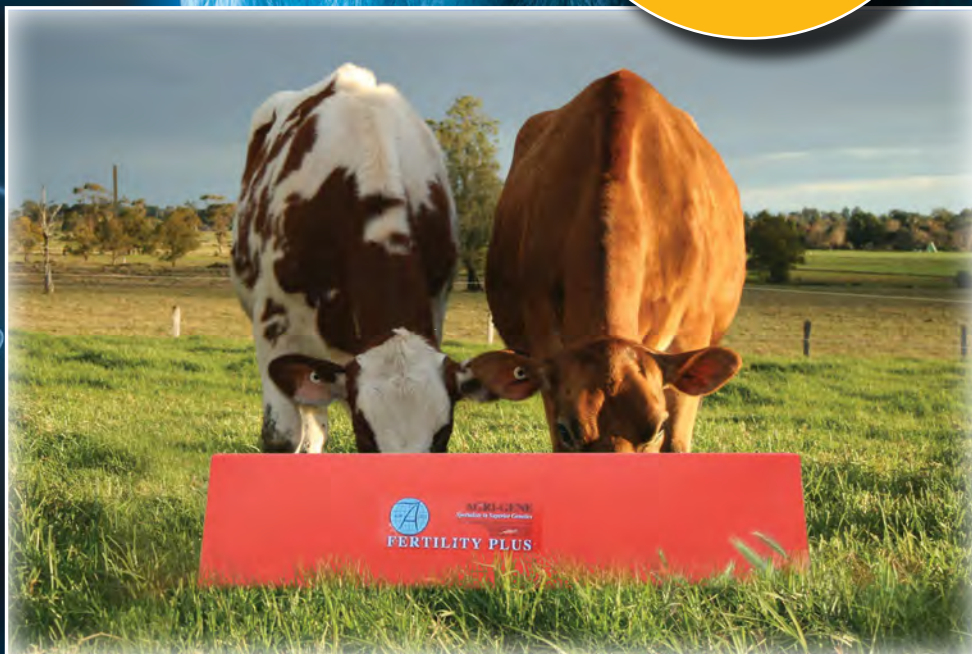


AGRI-VET

# FERTILITY PLUS®

**Success is the Answer – Increase Your Fertility**

**THE PROOF IS IN THE RESULTS IN DAIRY & BEEF HERDS THROUGHOUT AUSTRALIA**



A specially designed, cost effective, specialized, unique, waterproof mineral and vitamin including a higher content of essential elements, Selenium and Magnesium to supplement as a loose mix or through mineral dispensers to enhance the performance of all classes of cattle.

## COMPARE THE ANALYSIS - FERTILITY PLUS

- ❑ Increases Fertility in both Dairy & Beef Breeds
- ❑ Improves Weight Gain & Maturity in Dairy & Beef Young Stock
- ❑ Assists Grass Tetany and Metabolic Conditions
- ❑ Self Limiting - Balancing Mineral Requirements
- ❑ Unique Waterproofing Process
- ❑ Improves your profits - More Cows in Calf
- ❑ Cost Effective 12-19 Cents Per Cow Per Day
- ❑ Increases Milk Yields - Lowers Somatic Cell Counts
- ❑ Can be fed through Feed Systems at 30 Grams Per Cow Per Milking

## Fertility Plus is readily available through:

All AI Resellers, Murray Goulburn Trading stores, Landmark Stores and all leading Rural Stores throughout Australia.

**Agri-Gene Pty Ltd**

123-125 Tone Road, Wangaratta Victoria 3677

Ph: 03 5722 2666 Fax: 03 5722 2777

Email: [info@agrigene.com.au](mailto:info@agrigene.com.au) | [www.agrigene.com.au](http://www.agrigene.com.au)



# Top 5 Trait Highlights – USA Proofs

TPI	
DOGE	2794
NACASH	2785
DILLYDILLY	2783
STNOBLE	2768
STRAPID	2760

NM\$	
DOGE	994
RORY	927
DILLYDILLY	922
NACASH	904
AGRJUDGEMENT	902

IDEAL COMMERCIAL COW	
DOGE	1115
PLEXUS	1055
BERRYBLAK	1012
SUREROZ	1011
RORY	943

MILK	
CINCO	2341
CAHILL	1978
DILLYDILLY	1839
STNOBLE	1662
PLEXUS	1661

PROTEIN	
DOGE	70
DILLYDILLY	69
CINCO	69
PLEXUS	67
CRHEALER	66

PROTEIN%	
CHAIRMAN	0.12
BERRYBLAK	0.11
NACASH	0.11
JEDIFY	0.10
DELISHDION	0.10

FAT	
DOGE	129
CRHANDLE	117
CRHEALER	116
RORY	102
STRAPID	95

FAT%	
AGRONAUT	0.26
DOGE	0.25
CRHANDLE	0.25
NACASH	0.23
STTWISTER	0.23

PTAT	
THUNDERSTORM	4.34
BSMASTER	4.31
BLONDRAPTOR	4.04
CBUNSTOPABUL	3.46
STGHISTORY	3.25

UDDER COMP	
AWESOMERED	4.24
BSMASTER	3.69
1STGRADE	3.56
CBUNSTOPABUL	3.36
THUNDERSTORM	3.28

BODY COMP	
STCHIEF	2.63
BSMASTER	2.36
BLONDRAPTOR	2.27
CBCHILL	1.99
THUNDERSTORM	1.85

FEET & LEGS COMP	
THUNDERSTORM	2.96
BSMASTER	2.86
CBUNSTOPABUL	2.80
BLONDRAPTOR	2.48
MACNUT-PP	2.35

SOMATIC CELL COUNT	
STPANTHER	2.53
BENTLEY	2.53
AGRONAUT	2.54
STNOBLE	2.57
DELISHDION	2.60

DAIRY FORM	
THUNDERSTORM	3.35
BLONDRAPTOR	3.08
BSMASTER	3.02
DELTALAMBDA	2.45
STRAPID	2.4

MODERATE STATURE	
DELISHDION	-0.72
ZEPHIR	-0.27
BERRYBLAK	0.01
AGRONAUT	0.41
JEDIFY	0.47

STRENGTH	
BLONDRAPTOR	3.40
BSMASTER	3.38
THUNDERSTORM	2.66
CBCHILL	2.20
BENTLEY	2.13

BODY DEPTH	
BLONDRAPTOR	3.40
BSMASTER	3.38
THUNDERSTORM	2.66
CBCHILL	2.20
BENTLEY	2.13

RUMP ANGLE	
SKIPPY	1.87
PLEXUS	1.49
BLONDRAPTOR	1.35
CBCHILL	0.97
DOGE	0.94

THURL WIDTH	
THUNDERSTORM	3.48
AWESOMERED	3.22
BSMASTER	2.94
CBCHILL	2.92
STCHIEF	2.63

FOOT ANGLE	
THUNDERSTORM	3.24
CBUNSTOPABUL	3.23
BLONDRAPTOR	3.20
BSMASTER	3.16
DELTALAMBDA	2.7

FORE UDDER ATT.	
AWESOMERED	4.96
BSMASTER	4.71
THUNDERSTORM	4.59
BLONDRAPTOR	4.51
1STGRADE	4.42

REAR UDDER ATT. (H)	
AWESOMERED	5.73
BSMASTER	5.52
CBUNSTOPABUL	4.82
THUNDERSTORM	4.73
DELTALAMBDA	4.56

REAR UDDER ATT. (W)	
AWESOMERED	5.27
BSMASTER	5.08
CBUNSTOPABUL	4.43
THUNDERSTORM	4.35
DELTALAMBDA	4.2

UDDER CLEFT	
BLONDRAPTOR	3.58
CALVADOS	3.06
BSMASTER	2.83
1STGRADE	2.69
CBCHILL	2.61

UDDER DEPTH	
1STGRADE	4.64
THUNDERSTORM	4.32
STGHISTORY	4.07
STCHIEF	4.05
CBUNSTOPABUL	3.84

FRONT TEAT PL.	
BLONDRAPTOR	2.62
STRAPID	2.51
THUNDERSTORM	2.41
STGHISTORY	2.24
BSMASTER	2.18

REAR TEAT PLACEMENT	
STGHISTORY	2.76
BLONDRAPTOR	2.74
STRAPID	2.56
THUNDERSTORM	2.51
CRHANDLE	2.49

TEAT LENGTH	
BENTLEY	2.63
CHILIPEPPER	0.67
CINCO	0.66
RORY	0.59
CALVADOS	0.42

GESTATION LENGTH	
JEDIFY	-4.0
DOGE	-4.0
CRHANDLE	-4.0
CAHILL	-3.0
CHILIPEPPER	-3.0

CALVING EASE	
CHAIRMAN	5.5
DELISHDION	5.6
STPANTHER	5.8
BERRYBLAK	6.0
CBCHILL	6.0

PRODUCTIVE LIFE	
SUREROZ	8.6
STGNOLAN	8.1
AGRONAUT	7.9
ZEPHIR	7.9
STPANTHER	7.8

PREGCHECK	
RORY	105
SUREROZ	103
CRHEALER	103
CINCO	102
PLEXUS	102

SCR	
RORY	3.7
BENTLEY	2.4
ZEPHIR	2.2
CRHEALER	2.2
SUREROZ	1.5

DPR	
CARIBBEAN	3.7
STNEXUS	2.8
CALVADOS	2.6
STTWISTER	2.5
CHAIRMAN	2.2

HEIFER CONCEPTION RATE	
SCORPION	3.8
CARIBBEAN	3.7
RUSSIAN	3.6
STNOBLE	3.1
STNEXUS	3.0

COW CONCEPTION RATE	
CARIBBEAN	4.4
STNEXUS	3.7
STNOBLE	3.1
SKIPPY	3.0
CHAIRMAN	2.8



# Top 10 ABV Highlights – Australian Proofs

BPI	
PLEXUS	364
NACASH	362
SUREROZ	328
DELISHDION	327
SUPERGLOW	327
CHAIRMAN	326
DOGE	320
JEDIFY	310
POINTP	309
ADLONP	308

HWI	
PLEXUS	295
SUREROZ	291
JEDIFY	291
NACASH	287
POINTP	284
DELISHDION	279
CHAIRMAN	267
ADLONP	263
SUPERGLOW	255
STTWISTER	251

TWI	
NACASH	353
PLEXUS	343
SUREROZ	343
DOGE	333
DELISHDION	316
SUPERGLOW	314
ADLONP	305
CRHANDLE	300
AGRONAUT	299
CHAIRMAN	298

MILK	
CAHILL	1071
STGNOLAN	851
SUREROZ	825
STNOBLE	809
ZEPHIR	734
STCHIEF	706
1STGRADE	692
CHILIPEPPER	684
STNEXUS	679
DELTALAMBDA	672

PROTEIN	
SUPERGLOW	29
PLEXUS	28
STGNOLAN	25
ADLONP	24
ZEPHIR	24
CHILIPEPPER	24
SUREROZ	23
SCORPION	22
CAHILL	22
NACASH	21

PROTEIN%	
CRHEALER	0.33%
SUPERGLOW	0.30%
NACASH	0.27%
CHAIRMAN	0.24%
JEDIFY	0.23%
BERRYBLAK	0.23%
PLEXUS	0.21%
MECPP	0.21%
STPANTHER	0.19%
DELISHDION	0.19%

FAT	
DOGE	51
CRHANDLE	44
NACASH	44
CRHEALER	42
CHAIRMAN	40
RORY	39
DELISHDION	37
DELTALAMBDA	36
SKIPPY	35
AGRONAUT	35

FAT%	
DOGE	0.61%
CRHEALER	0.56%
NACASH	0.49%
CHAIRMAN	0.48%
AGRONAUT	0.43%
CRHANDLE	0.36%
DELISHDION	0.36%
RORY	0.31%
BERRYBLAK	0.30%
SKIPPY	0.28%

OVERALL TYPE	
AWESOMERED	111
SUREROZ	107
STGHISTORY	107
BSMASTER	106
DOGE	106
BENTLEY	106
AGRONAUT	105
ADLONP	105
BLONDRAPTOR	105
THUNDERSTORM	105

MAMMARY SYSTEM	
AWESOMERED	116
BENTLEY	109
AGRONAUT	109
BLONDRAPTOR	109
STTWISTER	109
THUNDERSTORM	108
DELTALAMBDA	108
1STGRADE	108
STNOBLE	108
CBUNSTOPABUL	108

MODERATE STATURE	
ZEPHIR	94
JEDIFY	95
DELISHDION	96
MECPP	97
STNOBLE	98
DILLYDILLY	98
SCORPION	98
CAHILL	99
CARIBBEAN	99
STTWISTER	100

UDDER DEPTH	
CBCHILL	114
STGHISTORY	114
1STGRADE	114
STCHIEF	113
AWESOMERED	111
AGRONAUT	111
STRAPID	111
THUNDERSTORM	110
POINTP	110
ADLONP	109

CENTRE LIGAMENT	
STGHISTORY	109
BLONDRAPTOR	108
CBCHILL	108
1STGRADE	108
NIGHTTIME	108
AWESOMERED	107
BENTLEY	107
BSMASTER	107
STCHIEF	107
PLEXUS	106

FORE UDDER ATT.	
AWESOMERED	113
BLONDRAPTOR	110
BENTLEY	108
STGHISTORY	107
AGRONAUT	107
THUNDERSTORM	107
SUREROZ	107
BSMASTER	107
STTWISTER	106
CBUNSTOPABUL	106

REAR UDDER ATT. H	
AWESOMERED	118
STNOBLE	111
1STGRADE	111
BENTLEY	110
NICHE	110
DELISHDION	110
AGRONAUT	109
STCHIEF	109
STNEXUS	109
DILLYDILLY	109

REAR UDDER ATT. W	
ZEPHIR	104
CHILIPEPPER	103
AWESOMERED	102
DELTALAMBDA	102
ADLONP	102
PLEXUS	102
STPANTHER	102
STNOBLE	101
AGRONAUT	101
DILLYDILLY	101

PIN SET	
MACNUT-PP	104
SKIPPY	103
STGNOLAN	103
CINCO	101
SUPERGLOW	101
THUNDERSTORM	101
DELISHDION	101
PLEXUS	101
POINTP	101
CAHILL	100

TEAT LENGTH	
BENTLEY	109
MECPP	105
RORY	104
CINCO	102
CALVADOS	101
CRHANDLE	100
CHILIPEPPER	100
BSMASTER	99
RUSSIAN	99
CAHILL	99

MILKING SPEED	
STRAPID	104
CALVADOS	103
RUSSIAN	103
POINTP	103
DELTALAMBDA	103
1STGRADE	103
DOGE	103
SKIPPY	103
DELISHDION	103
DILLY DILLY	103

TEMPERAMENT	
NACASH	104
STNEXUS	104
PLEXUS	104
ZEPHIR	104
STRAPID	103
RUSSIAN	103
DOGE	103
DELISHDION	103
RORY	103
CRHANDLE	103

HEAT TOLERANCE	
AWESOMERED	110
CBUNSTOPABUL	105
CAHILL	104
1STGRADE	103
CBCHILL	103
NIGHTTIME	102
STNEXUS	101
BENTLEY	101
POINTP	100
RUSSIAN	100

CALVING EASE	
RUSSIAN	104
POINTP	104
CHAIRMAN	104
ZEPHIR	103
DELISHDION	103
RORY	103
BENTLEY	103
CBCHILL	103
JEDIFY	103
AGRONAUT	103

CELL COUNT	
BENTLEY	187
NIGHTTIME	185
STCHIEF	178
CAHILL	177
NICHE	176
DELISHDION	175
AGRONAUT	173
CBCHILL	172
CRHANDLE	172
STPANTHER	171

DTR. FERTILITY	
JEDIFY	114
SUREROZ	112
BERRYBLAK	111
STNEXUS	111
POINTP	111
PLEXUS	110
STTWISTER	110
CHAIRMAN	110
ADLONP	110
SUPERGLOW	109

*Your No. 1 Dairy Source*



## IMPORTING AND EXPORTING ELITE GENETICS THROUGHOUT THE WORLD

### DIRECTORY INDEX

1STGRADE	8	CINCO	13	RUSSIAN	10
ADLONP	17	CRHANDLE	11	SCORPION	18
AGRJUDGEMENT	7	CRHEALER	11	SKIPPY	15
AGRONAUT	13	DILLYDILLY	7	STCHIEF	8
AWESOMERED	21	DELISHDION	15	STGHISTORY	20
BENTLEY	11	DELTALAMBDA	9	STGRANGER	13
BERRYBLAK	18	DOGE	5	STGNOLAN	6
BLONDRAPTOR	20	JEDIFY	18	STNEXUS	6
BSMASTER	19	MACNUT-PP	16	STNOBLE	6
CAHILL	12	NEILPP	16	STPANTHER	7
CALVADOS	20	NACASH	4	STRAPID	9
CARIBBEAN	5	NICHE	10	STTWISTER	9
CBCHILL	21	NIGHTIME	10	SUPERGLOW	14
CBUNSTOPABUL	19	PLEXUS	15	SUREROZ	4
CHAIRMAN	5	POINTP	17	THUNDERSTORM	21
CHILIPEPPER	17	RORY	12		

### DAIRY CONSULTANTS

Kim Coleman	0407 299 200	Graham Heaver	0437 299 209
Anthony Coombes	0498 956 233	Chris McIlroy	0408 229 316
John Dickinson	0438 299 203	Robert Hanegraaf	0407 690 056
Brad Gavenlock	0437 299 205	Rob Onley	0429 930 401

# Agri-Gene P/L

123-125 Tone Road, Wangaratta Victoria 3677

Ph: 03 5722 2666

Email: [info@agrigene.com.au](mailto:info@agrigene.com.au)

[www.agrigene.com.au](http://www.agrigene.com.au)

