

GENETIC SOLUTIONS

HOLSTEINS | JERSEYS | COLOUR BREEDS



SPRING 2019

CONTENTS

HOLSTEINS

1	Shareholder Offer
2 - 3	Holstein Premium Bull Offer
4	Horizon Genomic Program
5	FutureGen Team
6 - 7	Profit Leaders
8	Daughter Fertility
9	Semen Fertily
10 - 11	Production
12	Type
13	Sexed Semen
14 - 15	A22 Sires
16 - 17	Mastitis Resistance
18	Calving Ease
19	Longevity
20	Feed Saved
21	Heat Tolerance
22	Polled Sires
23	US Holstein Proofs
24 -25	Holstein Data Panel
26 - 27	HerdInsights
28	Genescreen
29	DairyBEEFX

JERSEYS

30	Jersey Data Panel
31	Jersey Premium Bull Offer
32	Profit Leaders
33	Fertility Leaders
34	Production
35	Type
36	A22 Sires
37	Mastitis Resistance
38	Longevity
39	Polled Sires
39	Sexed Semen
40	US Jersey Proofs

COLOUR BREEDS

41	Aussie Red Data Panel
42 - 43	Aussie Red
44	Illawarra
45	Normande
45	Montbeliarde
47	Viking Reds
47	Ayrshire
47	Guernsey
48	Brown Swiss

INDEX

HOLSTEINS

23	CEPHUS
14	CHRISTMAS
21	DEWARS
20	DUPLO
1	ENDGAME
19	ENOUGHROPE
8	FASHIONABULL
13	FEDORA
16	FRANKLAND
22	GGIPALETI PP RC
18	GGIBASEMENT
2	GGIKEEPER
3	GGISEMINO
12	GUTHRIE
12	J11CRUSH
3	JSCOLD P
23	JSIMMENSE
19	JSMARDIGRAS
9	JSMASTERMIND
2	JSMONTANA
13	JSPowerBALL P
6	JSSUPHERO
8	LORD
2	MAEBULL
18	MENCHOV
9	MICROCHIP
5	MRMAGIC
5	PEMBERTON
6	PILBARA
14	PINJARRA
10	SILVERLINE
3	SUPERDAVE
16	SUPERJET
10	TEXMEX

JERSEYS

34	ALGERNON
33	ASKN
37	AUSSIEGOLD P
32	BAZYLI
32	DOUGGAN
36	INVINCIBLE
38	IRWIN
36	LOKI
38	MANLY
33	MRFERTILITY
39	OLIVER P
39	POLLEDGOLD PP
40	SOLAR
40	SUIT {6} PP
37	VALENBLAST
35	VALETINO
35	VALIN
34	VOYAGEDALE

DISCLAIMER: The content of this Catalogue is provided for information only. It is published with care and attention to accuracy, but Genetics Australia accepts no liability if, for any reason the information is inaccurate or out of date whether negligent or otherwise.

Limitation of Liability: Genetics Australia warrants that it has clear title to the products sold and that all semen processed in its laboratory is processed under rigid quality controls. Since Genetics Australia does not control conditions under which its products are used it does not give, and its agents and employees are forbidden to give, any warranty express or implied as to the conception rate quality or productiveness or the results which may be obtained by the use of any product sold or in connection with any techniques recommended. Genetics Australia makes no other warranty of any kind whatsoever express or implied which extends beyond the description of its products. Where so permitted the liability of Genetics Australia for breach of a condition or warranty implied by statute is limited at Genetics Australia's option to the replacement or repair of the goods or the supply of equivalent goods or the cost of replacing or repairing the goods or of acquiring equivalent goods. So far as the law permits Genetics Australia shall not be liable in any way whatsoever for any indirect or consequential loss or loss of profit.

Sexed (sorted) semen: Artificial insemination straws that Genetics Australia offers for sale as sexed (sorted) semen using Sexing Technologies proprietary technology, shall only be used for single-use artificial insemination and not for in-vitro-fertilisation or embryo transfer.

COVER: Genetics Australia's Gerard Brislin with Mike Kilkenny and Tim Jelbart from Koonwarra.

Farming is a complex business and farmers are always looking for ways to reduce this complexity.

The dairy genetics scene is also complex and with the introduction of new technologies, new traits and more players in the game, it is only becoming more confusing. At Genetics Australia, we recognise that you need tools and techniques that cut through this complexity and provide you with simple SOLUTIONS that can be applied to your breeding program.

That is what this new look catalogue is all about – SOLUTIONS! Our sales and marketing team have listened to our customers, distilled this information and have identified key breeding goals and points of interest that consistently feature in your sire selection decisions. We have divided our bull teams into these SOLUTION based categories so that you can quickly and easily find the group of bulls that fit your breeding goals. Whether it's Polled, A2, Sexed, Type or Fertility, you can quickly and easily identify the bulls that will work for you. For traits such as Mastitis Resistance, we have combined a group of traits in the data panel that all have a relationship with Mastitis Resistance, not just Cell Count.

I hope you find our new look catalogue interesting and helpful in providing you with SOLUTIONS for the upcoming breeding season.

Anthony Shelly
Chief Executive Officer



EXCLUSIVE SHAREHOLDER OFFER

ENDGAME is Australia's most exciting up and coming genomic sire. He boasts a whopping +375 BPI and is the most complete young sire on the market. **ENDGAME** semen has limited availability so we are offering him **EXCLUSIVELY** to shareholders for the remainder of 2019. Beat the rush and pre-order now!

Winaview Superhero Avenger

ENDGAME

Superhero x Monterey

RRP \$26.00

A12

- Superior Type Genomic sire
- Outstanding Mammary System traits
- Breed leading Survival, Cell Count and Fertility

BPI 375

ASI 162

Overall Type 107

Mam System 106

Cell Count 167

Daughter Fert 113

Survival 113



Shoremar S Alicia

"ENDGAME's family traces back to the world renown Shoremar S Alicia. The Alicias in the Winaview herd display great type, health traits and longevity. ENDGAME's four nearest dams are all still in the Winaview herd."

SAVE UP TO \$600!

Calister Maebull

MAEBULL

Palermo x Shottle

RRP \$24.00

A22

- Australia's Number 1 Daughter Proven Sire
- A22 sire with amazing Cell Count and Daughter Fertility
- Lower Pins, wider Chests, shallow Udders and longer Teats

BPI	323	ASI	127	Overall Type	102	Mam System	101	Cell Count	192	Daughter Fert	111	Survival	110
-----	-----	-----	-----	--------------	-----	------------	-----	------------	-----	---------------	-----	----------	-----



Maebull 3214, Colin & Dianne Johnson

"It's great to see MAEBULL at the top of the ABV list. I have used him before because he is A22, has good fertility and makes teats longer. Even though I have used him before, he will play a big role in my breeding program this year."

Wil Keeper P

GGIKEEPER P

Kerigan x Supershot

RRP \$26.00

A22

- A22, Polled, Total Performance Sire
- Superior Protein transmitter with outstanding Type
- Breed leader for Udders at 113.

BPI	309	ASI	123	Overall Type	109	Mam System	112	Cell Count	178	Daughter Fert	107	Survival	111
-----	-----	-----	-----	--------------	-----	------------	-----	------------	-----	---------------	-----	----------	-----



GGI Keeper P

"I'm looking forward to using GGIKEEPER P as he is an outcross, A22, polled sire that has really nice type and mammary scores. He also has the added bonus of siring longer teats. All this makes him an easy to use sire for our joining program."

lhg Montana-ET

JSMONTANA

Montross x Numero Uno

RRP \$26.00

A22

- Great ratings for Milk and Fat and A22
- Strong Health and Fertility ratings
- Reliable sire in the US - now adding daughters in Australia

BPI	339	ASI	123	Overall Type	103	Mam System	106	Cell Count	171	Daughter Fert	112	Survival	111
-----	-----	-----	-----	--------------	-----	------------	-----	------------	-----	---------------	-----	----------	-----



Montana Dam, Sullhrford Nuno Ana 383

"With daughters calving in Australia adding even more reliability JSMONTANA's proof continues to lift. He's a modern day bull medium stature with exceptional health traits and very pleasing calving ease. One of the most complete bulls available."

THE BEST OF OUR PREMIUM BULL TEAM FOR JUST \$20

Order 100+ units of any combination for \$20 RRP*

*offer valid from the 16th August 2019 until the 1st of December 2019

Warramont Superhero Dave-ET

RRP \$24.00

SUPERDAVE

Superhero x Doorman

A22

- Top Australian bred genomic sire
- Amazing Fat and Protein deviations
- A22 sire with an alternative pedigree

BPI	376	ASI	236	Overall Type	102	Mam System	104	Cell Count	162	Daughter Fert	106	Survival	108
-----	-----	-----	-----	--------------	-----	------------	-----	------------	-----	---------------	-----	----------	-----



Superdave

"SUPERDAVE is an elite genomic sire and a great option when looking for high components and milk solids. When combined with his high semen fertility score, he is well suited for many farms."

Ernest Anthony Cold-ET P

RRP \$24.00

JSCOLD P

Powerball P x Beluga

534H000068

A22

- Outstanding Polled A22 sire
- Shallow, strongly attached udders with correct teat placement
- Breed leading Daughter Fertility

BPI	308	ASI	122	Overall Type	106	Mam System	107	Cell Count	144	Daughter Fert	113	Survival	111
-----	-----	-----	-----	--------------	-----	------------	-----	------------	-----	---------------	-----	----------	-----



Cold Dam, Michigan Belg Polar 4957

"I'll be making JSCOLD P part of my breeding program this year. He ticks a lot of my boxes: Polled, Protein, Udders, Fertility and A22, and he's part of GA's \$20 offer!"

Semino

RRP \$24.00

GGISEMINO

Silver x Balisto

A22

- Popular A22 sire with a balanced overall proof
- Great production with positive deviations
- Great Udder Attachments

BPI	321	ASI	183	Overall Type	105	Mam System	108	Cell Count	135	Daughter Fert	106	Survival	111
-----	-----	-----	-----	--------------	-----	------------	-----	------------	-----	---------------	-----	----------	-----



Semino Dam, Vision-Gen SH FRD

"SEMINO has calves landing this year and farmers reports have been very positive. The calves are robust and have a great will to thrive and develop. Not surprising for a bull that sires some strength."



AUSTRALIA'S ELITE YOUNG SIRE PROGRAM

\$12
A UNIT

PICK YOUR TEAM

You can choose your favourites from our HGP Young Sires team.

RANDOM ALLOCAION

We'll randomly allocate your bulls from our HGP & FutureGen Young Sires team.

Eddie Kenna, from The Sisters, in Western Victoria is a perfect example of why our Horizon Genomic Program works having backed the program for 15+ years.

*"It is a **cost saving**, but the other advantage is that **you are ahead**, because, the genomic semen is from relatively young and **up-and-coming bulls**, years before they are proven."*



For more information or to see what bulls are available, call our team or head to www.genaust.com.au

FUTUREGEN

FutureGen – Tomorrow's genetics today!

Australian born and bred, FutureGen sires represent the best that Australian breeders have to offer. Genomic technology has been the great “enabler” of our time and Genetics Australia was the first breeding company in the world to embrace this game changing technology. These young sires are at the cutting edge and they will give you the edge in your breeding program.

Carenda Perseus 710

PEMBERTON

Perseus x Jacey

A22

BPI	358	ASI	176	Overall Type	105	Mam System	106
Cell Count	174	Daughter Fert	109	Survival	109		

Pemberton Dam, Carenda Jacey Funky



- High BPI, A22 genomic sire
- One of the most complete Young Sires available
- Outcross Pedigree – Perseus x Jacey

Bundalong Magictouch Mister-ET

MR MAGIC

Magictouch x Muscadet

A22

BPI	320	ASI	139	Overall Type	104	Mam System	107
Cell Count	142	Daughter Fert	109	Survival	110		

Family Member, Seagull-Bay SSire Debra



- Outcross sire from the famous Rudy Missy family
- Great Workability, Health and Fertility ratings
- Strong positive deviations and A22

Leading Future Gen Sires

Name	Full Name	A2 Status	Pedigree	BPI	ASI	Overall Type	Mamm System	Cell Count	Dtr Fertility	Survival	RFP
ENDGAME	WINAVIEW SUPERHERO AVENGER	A12	Superhero x Monterey	375	162	107	106	167	113	113	\$26.00
PILBARA	CARENDA PILBARA	A22	Perseus x Powerball P	362	184	102	106	157	111	110	\$20.00
WALPOLE P	CARENDA WALPOLE P	A12	Perseus x Powerball P	359	174	101	102	159	116	109	\$20.00
PEMBERTON	CARENDA PEMBERTON	A22	Perseus x Jacey	358	176	105	106	174	109	109	\$24.00
TEXMEX	WILARA TEX	A12	Vador x Buddha	353	230	100	103	144	107	106	\$16.00
ANAKIN	KIRK ANDREWS VADOR M186	A12	Vador x Anchor	352	234	102	103	143	108	106	\$18.00
SILVERSTAR	COUNTRY ROAD SILVERLINE 4910	A12	Silverline x Wyman	336	195	103	103	140	108	109	\$16.00
ETHOS	REDMAW PERSEUS ETHOS-ET	A22	Perseus x Eraser	326	136	105	108	163	110	112	\$20.00
FASHIONABULL	ILLAWAMBRA PERSEUS DEBONAIR	A12	Perseus x Royalman	326	169	100	103	139	114	109	\$18.00
ENOUGHROPE	KAARMONA DENTON-TWIN	A12	Bubba x Rubicon	324	129	105	106	168	108	112	\$20.00
MRMAGIC	BUNDALONG MAGICTOUCH MISTER-ET	A22	Magictouch x Muscadet	320	139	104	107	142	109	110	\$18.00
DONK	WARRAMONT SUPERHERO DONK-ET	A22	Superhero x Palermo	319	172	103	101	158	107	110	\$16.00
LAGER	ILLAWAMBRA PERSEUS LAGER	A22	Perseus x Salvino	315	150	101	103	145	115	109	\$20.00
PINJARRA	CARENDA PINJARRA	A22	Perseus x Megasire	307	148	103	106	157	108	108	\$20.00
FRANKLAND	CARENDA FRANKLAND	A22	Contender x Powerball P	300	119	107	106	179	108	111	\$20.00
MEXICOLA	BUNDALONG SUPERSRING WINNER	A22	Superspring x Mogal	276	145	107	108	138	106	111	\$16.00

PROFIT LEADERS

Carenda Pilbara

PILBARA

Perseus x Powerball P

A22

- Elite BPI, A22 sire
- Superior Protein Yield and Deviations with good milk flow
- Excellent Cell Count and Fertility ratings

BPI	362	ASI	184	Overall Type	102	Mam System	106	Cell Count	157	Daughter Fert	111	Survival	110
-----	-----	-----	-----	--------------	-----	------------	-----	------------	-----	---------------	-----	----------	-----



Pilbara Dam, Carenda Powerball Vergara

"I'll be using PILBARA this coming joining as he is an elite young sire with a BPI of 362, putting him among the best bulls standing in Australia. He has an easy use pedigree and with high likability, he should be a go to bull for years to come"

Endco Superhero-ET

JS SUPERHERO

Supershot x Numero Uno

A12

- Second crop daughters impressing in Australia and around the world
- Strong protein rating with high fertility
- Great Health and Survival

BPI	342	ASI	125	Overall Type	107	Mam System	105	Cell Count	175	Daughter Fert	113	Survival	114
-----	-----	-----	-----	--------------	-----	------------	-----	------------	-----	---------------	-----	----------	-----



Superhero Dam, De-Su Uno 3081

"I have four SUPERHERO daughters milking and I love them. One was bulling 13 days after calving and then 20 days later again, so it looks like his fertility rating is on the money."

PROFIT LEADERS



Who isn't thinking about profitability these days?

The BPI provides you with the best genetic estimate of profit available by combining a specific set of traits that reflect farmer needs and economic farm modelling. You can use the BPI to confidently select the most profitable genetics for your herd. BPI is the primary focus of the Genetics Australia breeding program. If profit is important to you, the BPI should be high on your selection criteria list as well.

Leading BPI Sires

Name	Full Name	A2 Status	Pedigree	BPI	ASI	Overall Type	Mamm System	Cell Count	Dtr Fertility	Survival	RRP
SUPERDAVE	WARRAMONT SUPERHERO DAVE-ET	A22	Superhero x Doorman	376	236	102	104	162	106	108	\$24.00
ENDGAME	WINAVIEW SUPERHERO AVENGER	A12	Superhero x Monterey	375	162	107	106	167	113	113	\$26.00
LORD 07H013696	SSI SCENARIO LORD	A22	Scenario x Yoder	369	166	97	106	161	115	111	\$24.00
ITLETSGO	VOGUE LETSGO	A12	Applicable x Powerball P	363	153	106	109	154	113	115	\$36.00
PILBARA	CARENDA PILBARA	A22	Perseus x Powerball P	362	184	102	106	157	111	110	\$20.00
WALPOLE P	CARENDA WALPOLE P	A12	Perseus x Powerball P	359	174	101	102	159	116	109	\$20.00
PEMBERTON	CARENDA PEMBERTON 710	A22	Perseus x Jacey	358	176	105	106	174	109	109	\$24.00
KADE	WILARA HERO KADE-ET	A11	Superhero x Silver	357	191	105	104	158	111	112	\$18.00
TEXMEX	WILARA TEX	A12	Vador x Buddha	353	230	100	103	144	107	106	\$16.00
ANAKIN	KIRK ANDREWS VADOR M186	A12	Vador x Anchor	352	234	102	103	143	108	106	\$18.00
SUPERJET	SUPERJET	A12	Superhero x Balisto	350	164	105	105	178	110	111	\$24.00
ITDUPL0	GHEZZI GPLUS DUPL0	A12	Superhero x Powerball P	346	140	103	105	156	113	109	\$20.00
GGIHOTSPOT P	WIL HOTSPOT P	A12	Superhero x Powerball P	343	179	104	103	159	108	113	\$36.00
JSSUPERHERO	ENDCO SUPERHERO-ET	A12	Supershot x Numero Uno	342	125	107	105	175	113	111	\$20.00
JSMONTANA	IHG MONTANA-ET	A22	Montross x Numero Uno	339	123	103	106	171	112	111	\$26.00
SILVERSTAR	COUNTRY ROAD SILVERLINE 4910	A12	Silverline x Wyman	336	195	103	103	140	108	109	\$16.00
SILVERLINE	GLOMAR SILVER 1717-ET	A12	Silver x Fever	334	240	103	108	133	100	110	\$20.00
JSMASTERMIND	MR MASTERMIND	A12	Montana x Supersire	331	164	103	106	168	108	111	\$22.00

DAUGHTER FERTILITY

More cows in calf is every farmers goal.

Cows that cycle quicker and stronger after calving are more likely to conceive than those who don't. Bulls that transmit higher daughter fertility improve your profitability and add to your overall farm efficiency by helping you to maintain control over your calving patterns. Reduce your spend on veterinary intervention by breeding more fertile cows.

SSI Scenario Lord **07H013696**

LORD

Scenario x Yoder **A22**

BPI	369	ASI	166	Overall Type	97	Calving Ease	104
Cell Count	161	Daughter Fert	115	Survival	111		



Lord MGGD, S-S-I Bookem Modesto 7269-ET

- A22 Sire with outstanding Fat and Protein deviations
- Super Calving Ease option at 104
- Shallow, well attached udders contributing to excellent Survival

Illawambra Perseus Debonair

FASHIONABULL

Perseus x Royalman **A12**

BPI	326	ASI	169	Overall Type	100	Calving Ease	103
Cell Count	139	Daughter Fert	114	Survival	109		



Fashionabull

- Fertility specialist with strong Production ratings
- Correct Rumps and Feet & Legs
- Good Survival and Health ratings

Leading Daughter Fertility Sires

Name	Full Name	A2 Status	Pedigree	BPI	Dtr Fertility	ASI	Overall Type	Cell Count	Calving Ease	Survival	RRP
WALPOLE P	CARENDA WALPOLE P	A12	Perseus x Powerball P	359	116	174	101	159	103	109	\$20.00
LAGER	ILLAWAMBRA PERSEUS LAGER	A22	Perseus x Salvino	315	115	150	101	145	103	109	\$20.00
LORD 07H013696	SSI SCENARIO LORD	A22	Scenario x Yoder	369	115	166	97	161	104	111	\$24.00
FASHIONABULL	ILLAWAMBRA PERSEUS DEBONAIR	A12	Perseus x Royalman	326	114	169	100	139	103	109	\$18.00
JSCOLD P 534H000068	ERNEST ANTHONY COLD P	A22	Powerball P x Beluga	308	113	122	106	144	101	111	\$24.00
ENDGAME	WINAVIEW SUPERHERO AVENGER	A12	Superhero x Monterey	375	113	162	107	167	101	113	\$26.00
ITDUPL0	GHEZZI GPLUS DUPLO	A12	Superhero x Powerball P	346	113	140	103	156	101	109	\$20.00
ITLETSGO	VOGUE LETSGO	A12	Applicable x Powerball P	363	113	153	106	154	101	115	\$36.00
JSSUPERHERO	ENDCO SUPERHERO-ET	A12	Supershot x Numero Uno	342	113	125	107	175	101	111	\$20.00
JSMONTANA	IHG MONTANA-ET	A22	Montross x Numero Uno	339	112	123	103	171	102	111	\$26.00
KADE	WILARA HERO KADE-ET	A11	Superhero x Silver	357	111	191	105	158	102	112	\$18.00
MAEBULL	CALISTER MAEBULL	A22	Palermo x Shottle	323	111	127	102	192	103	110	\$24.00
PILBARA	CARENDA PILBARA	A22	Perseus x Powerball P	362	111	184	102	157	103	110	\$20.00
ETHOS	REDMAW PERSEUS ETHOS-ET	A22	Perseus x Eraser	326	110	136	105	163	103	112	\$20.00
SUPERJET	SUPERJET	A12	Superhero x Balisto	350	110	164	105	178	102	111	\$24.00

SEMEN FERTILITY



A straw of semen does two things.

It is a mechanism to improve your herd through breeding better replacements, however the most immediate job for that straw of semen is to get the cow in calf. DataGene provides the industry with non-return rate data that helps us identify our superior fertility bulls. Our quality control processes refined over our 60-year history ensures that the semen you use has the best chance of achieving a conception.

Mr Mastermind
JSMASTERMIND
Montana x Supersire A12

BPI	331	ASI	164	Overall Type	103	Semen Fert (%)	1.96
Cell Count	168	Daughter Fert	108	Survival	111		



Mastermind Dam, Pen-Col SS Madame-ET

- High Semen and Daughter Fertility
- Superior Production Sire
- Teat Length and Cell Count Improver

Hindlee Picola Goldchipdream 1418-ET
MICROCHIP
Picola x Gold Chip A22

BPI	257	ASI	119	Overall Type	98	Semen Fert (%)	1.26
Cell Count	173	Daughter Fert	101	Survival	107		



Microchip Daughter, Fala Park MicroChip 5934

- Reliable, Daughter Proven Option
- Reliable Semen Fertility Rating
- Black daughters with super udders

Leading Semen Fertility Sires

Name	Full Name	A2 Status	Pedigree	BPI	Semen Fert	ASI	Overall Type	Cell Count	Dtr Fertility	Survival	RRP
SUPERDAVE	WARRAMONT SUPERHERO DAVE-ET	A22	<i>Superhero x Doorman</i>	376	2.62%	236	102	162	106	108	\$24.00
JSSUPERHERO	ENDCO SUPERHERO-ET	A12	<i>Supershot x Numero Uno</i>	342	2.05%	125	107	175	113	111	\$26.00
WRANGLER	RENGAW MANOMAN WRANGLER-ET	A11	<i>Man-O-Man x Shottle</i>	229	2.00%	145	106	151	105	107	\$18.00
JSMMASTERMIND	MR MASTERMIND	A12	<i>Montana x Supersire</i>	331	1.96%	164	103	168	108	111	\$26.00
JSMARDIGRAS	MR MOVIESTAR MARDI GRAS	A12	<i>Mogul x Planet</i>	260	1.85%	92	104	139	109	113	\$24.00
ITDRAGON P	GEGANIA DRAGON	A22	<i>Clash P x Mogul</i>	293	1.67%	158	103	140	105	110	\$22.00
APPLE-CRISP 7H013778	SIEMERS OCT APPLE CRISP RC	A12	<i>High Octane x Mogul</i>	136	1.36%	-9	109	156	105	112	\$24.00
GGISEMINO	SEMINO	A22	<i>Silver x Balisto</i>	321	1.36%	183	105	135	106	111	\$24.00
SILVERLINE	GLOMAR SILVER 1717-ET	A12	<i>Silver x Fever</i>	334	1.35%	240	103	133	100	110	\$20.00
MICROCHIP	HINDLEE PICOLA GOLDCHIPDREAM 1418-ET	A22	<i>Picola x Gold Chip</i>	257	1.26%	119	98	173	101	107	\$18.00
MENCHOV	CARENDA PALERMO 270	A22	<i>Palermo x O-Man</i>	205	1.08%	77	103	135	109	108	\$18.00
GGIBASEMENT	BASEMENT	A22	<i>Balisto x Snowman</i>	289	0.81%	165	104	141	108	110	\$22.00
MAEBULL	CALISTER MAEBULL	A22	<i>Palermo x Shottle</i>	323	0.67%	127	102	192	111	110	\$24.00

PRODUCTION

Glomar Silver 1717-ET

SILVERLINE

Silver x Fever

A12

- One of the breed's best for Protein
- Daughters hitting Australian herds now!
- Excellent Workability Traits

BPI 334

ASI 240

Overall Type 103

Protein (kg) 29

Milk (L) 622

Fat (kg) 55

Daughter Fert 100



Silverline Dam, Glomar Fever Lady

"SILVERLINE continues to offer pure production backed by one of the best all-round Mammary proofs. His positive semen fertility scores sees him recording exceptional in-calf rates with both Fresh and Frozen Sexed Ultra"

Wilara Tex

TEXMEX

Vador x Buddha

A12

- Superior Protein and Fat Yields and Deviations
- No Health trade-offs
- Efficient production – positive for Feed Saved

BPI 353

ASI 230

Overall Type 100

Protein (kg) 21

Milk (L) 91

Fat (kg) 54

Daughter Fert 107



Texmex

"The four generations behind TEXMEX are still milking in the herd today and are quality, efficient, long lasting cows. His Jose grand dam is EX92 and pregnant on her 10th lactation"

PRODUCTION

The aim of the game is efficient milk production.

The ASI is the perfect tool to drive efficient production by enhancing yields of protein and fat while improving protein and fat percentages. While the protein to fat payment ratio may change from time to time, the imperative to produce as much protein and fat as possible, never changes. To improve the production of your herd, select high ASI sires.

Leading ASI Sires

Name	Full Name	A2 Status	Pedigree	BPI	ASI	Protein (kg)	Milk (L)	Fat (kg)	Overall Type	Dtr Fertility	RRP
MASNAH	PURNIM MVP MASNAH-ET	A22	MVP x Buddha	314	262	28	243	52	105	107	\$20.00
SILVERLINE	GLOMAR SILVER 1717-ET	A12	Silver x Fever	334	240	29	622	55	103	100	\$20.00
SUPERDAVE	WARRAMONT SUPERHERO DAVE-ET	A22	Superhero x Doorman	376	236	21	-175	39	102	106	\$24.00
ANAKIN	KIRK ANDREWS VADOR M186	A12	Vador x Anchor	352	234	19	-127	51	102	108	\$18.00
TEXMEX	WILARA TEX	A12	Vador x Buddha	353	230	21	91	54	100	107	\$16.00
CHRISTMAS	EMU BANKS CHRISTMAS-ET	A22	Roumare x Goldbullion	240	218	25	250	41	106	99	\$20.00
SILVERSTAR	COUNTRY ROAD SILVERLINE 4910	A12	Silverline x Wyman	336	195	22	299	41	103	108	\$16.00
KADE	WILARA HERO KADE-ET	A11	Superhero x Silver	357	191	21	242	37	105	111	\$18.00
GGIBAJOU	BAJOU	A12	Barclay x Racer	285	188	26	432	29	104	101	\$20.00
PILBARA	CARENDA PILBARA	A22	Perseus x Powerball P	362	184	28	513	22	102	111	\$20.00
GGISEMINO	SEMINO	A22	Silver x Balisto	321	183	20	206	36	105	106	\$24.00
GGIHOTSPOT P	WIL HOTSPOT P	A12	Superhero x Powerball P	343	179	29	593	21	104	108	\$36.00
CEPHUS 14H014370	PEAK JOSETTE GDNCR 20408-ET	A22	Gatedancer x Josuper	310	177	25	633	37	101	107	\$26.00
PEMBERTON	CARENDA PEMBERTON	A22	Perseus x Jacey	358	176	23	189	21	105	109	\$24.00
DONK	WARRAMONT SUPERHERO DONK-ET	A22	Superhero x Palermo	319	172	28	664	26	103	107	\$16.00
FASHIONABULL	ILLAWAMBRA PERSEUS DEBONAIR	A12	Perseus x Royalman	326	169	22	105	15	100	114	\$18.00
LORD 07H013696	SSI SCENARIO LORD	A22	Scenario x Yoder	369	166	17	209	40	97	115	\$24.00
JSDEMAN	EDG DEMAN	A12	Mogul x Atwood	285	165	18	248	36	110	101	\$24.00
GGIBASEMENT	BASEMENT	A22	Balisto x Snowman	289	165	24	389	20	104	108	\$22.00
JSMMASTERMIND	MR MASTERMIND	A12	Montana x Supersire	331	164	24	719	38	103	108	\$22.00
SAMURI 7H012897	OCD SPRING SAMURI	A22	AltaSpring x Supersire	299	164	22	467	33	105	107	\$32.00

TYPE

Correct conformation is a vital part of breeding long lasting, problem free cows, and problem free cows give you time to focus on other aspects of your business.

The breed society classifiers score the cows for DataGene for the kind of cow that makes you money for multiple lactations. Functional udders, correct rumps, sound feet & legs and a balance of strength and femininity combine to deliver a profitable cow. Your herd will always be one of your biggest assets.

Elmar Crush-ET

J11CRUSH

Crush x Goldwyn

A12

BPI	250	Body Depth	98	Overall Type	108	Mam System	113
Pin Set	98	Heal Depth	104	Udder Depth	111		



J11Crush Dam, Elmar Goldwyn Jessica 11 ET EX92 3E

- Great Grand Dam is the legendary Elmar Leader Jessica EX3E
- Amazing Udder Traits
- Excellent Mastitis Resistance

Fustead Goldwyn Guthrie

7H9420

GUTHRIE

Goldwyn x Blitz

A12

BPI	189	Body Depth	98	Overall Type	108	Mam System	110
Pin Set	102	Heal Depth	103	Udder Depth	103		



Guthrie Daughter, Luck-E Guthrie Kleopatra

- The reliable Type choice
- Super Heat Tolerance at 106
- A true "Farmer Favourite"

Leading Type & Mammary Sires

Name	Full Name	A2 Status	Pedigree	BPI	Overall Type	Mam System	Body Depth	Pin Set	Heal Depth	Udder Depth	RRP
JSIMMENSE	OUR-FAVOURIT IMMENSE	A22	Jacoby x Beemer	132	111	115	100	97	107	114	\$45.00
J11SALON	ELMAR SALON-ET	A12	Solomon x Goldwyn	225	110	112	98	106	108	110	\$20.00
JSDEMAN	EDG DEMAN	A12	Mogul x Atwood	285	110	110	100	88	104	109	\$24.00
APPLE-CRISP 7H013778	SIEMERS OCT APPLE CRISP RC	A12	High Octane x Mogul	136	109	112	98	97	102	114	\$24.00
GGIKEEPER P	WIL KEEPER P	A22	Kerigan x Supershot	309	109	112	94	92	96	110	\$26.00
BRADNICK 7H10999	REGANCREST-GV S BRADNICK	A22	Sanchez x Shottle	80	108	113	94	101	108	109	\$22.00
J11CRUSH	ELMAR CRUSH-ET	A12	Crush x Goldwyn	250	108	113	98	98	104	111	\$20.00
DEWARS 14H07748	KINGS-RANSOM 1ST DEWARS-ET	A22	Alta1stClass x Doorman	306	108	110	96	107	98	113	\$20.00
GUTHRIE 7H9420	FUSTEAD GOLDWYN GUTHRIE	A12	Goldwyn x Blitz	189	108	110	98	102	103	103	\$20.00
ITSNEAKER	AL. CE MERIDIAN SNEAKER ET	A22	Meridian x Atwood	34	107	112	97	100	94	110	\$26.00
JSHOTKEPOT	SIEMERS HOTSPOT	A22	Hotline x Monterey	227	107	111	93	93	102	115	\$20.00
MOGUL 7H11314	MOUNTFIELD SSI DCY MOGUL	A12	Dorcy x Marsh	215	107	110	97	98	105	108	\$42.00
SECRETARIAT	ALL.NURE SECRETARIAT	A22	Número Uno x AltaBaxter	230	107	110	96	101	103	106	\$36.00
ENDGAME	WINAVIEW SUPERHERO AVENGER	A12	Superhero x Monterey	375	107	106	97	96	96	110	\$26.00
FRANKLAND	CARENDA FRANKLAND	A22	Contender x Powerball P	300	107	106	94	98	102	109	\$20.00
ITEUDON	GO-FARM ROYAL EUDON	A12	Million x Shottle	116	107	105	99	103	100	108	\$24.00
JSSUPERHERO	ENDCO SUPERHERO-ET	A12	Supershot x Número Uno	342	107	105	95	100	97	109	\$20.00
MEXICOLA	BUNDALONG SUPERSRING WINNER	A22	Superspring x Mogul	276	107	108	104	97	99	109	\$16.00
ITLETSGO	VOGUE LETSGO	A12	Applicable x Powerball P	363	106	109	94	101	100	112	\$36.00
JSGLAMOR	IHG GLAMOR -ET	A12	Cashcoin x Supersire	265	106	108	100	105	93	101	\$22.00
ITINNUENDO	GO-FARM INNUENDO	A12	AltaToohot x Superman	296	106	108	98	101	101	107	\$20.00

SEXED SEMEN

Semen sexing is the technology that has revolutionised the way we think about mating plans!

Sexed semen provides flexibility. You can now target your genetically superior animals and with reasonable surety, obtain a heifer from the mating. Generating enough replacements from the top of your herd allows you to mate the bottom of your herd to dairy beef. You can use sexed semen to generate surplus replacements for sale – the possibilities are almost endless.

Sandy-Valley Fedora-ET

14H013980

FEDORA

Bandares x Kingboy

A12

BPI	299	ASI	138	Overall Type	103	Mam System	106
Cell Count	176	Daughter Fert	107	Survival	111		



Fedora

- Balanced Production proof with good Yields of Protein and Fat
- Great Survival and Cell Count ratings
- Positive Feed Efficiency rating

View-Home Powerball P-ET

JsPOWERBALL

Earnhardt P x Robust

A22

BPI	270	ASI	148	Overall Type	100	Mam System	101
Cell Count	125	Daughter Fert	108	Survival	109		



Powerball Daughter, Elm Banks Powerball Silk

- Prolific Polled sire with 90+ daughters in Australia
- Protein specialist at +32kgs
- A22 with great Fertility and Survival

Available Sexed Semen Sires

Name	Full Name	A2 Status	Pedigree	BPI	ASI	Overall Type	Mam System	Cell Count	Dtr Fertility	Survival	Sexed Semen RRP
SUPERDAVE	WARRAMONT SUPERHERO DAVE-ET	A22	Superhero x Doorman	376	236	102	104	162	106	108	\$52.00
LORD 07H013696	SSI SCENARIO LORD	A22	Scenario x Yoder	369	166	97	106	161	115	111	\$55.00
PEMBERTON	CARENDA PEMBERTON 710	A22	Perseus x Jacey	358	176	105	106	174	109	109	\$52.00
JSSUPERHERO	ENDCO SUPERHERO-ET	A12	Supershot x Numero Uno	342	125	107	105	175	113	111	\$60.00
JSMONTANA	IHG MONTANA-ET	A22	Montross x Numero Uno	339	123	103	106	171	112	111	\$60.00
SILVERLINE	GLOMAR SILVER 1717-ET	A12	Silver x Fever	334	240	103	108	133	100	110	\$45.00
MAEBULL	CALISTER MAEBULL	A22	Palermo x Shottle	323	127	102	101	192	111	110	\$55.00
CYCLONE 7H012858	OCD YODER CYCLONE-ET	A12	Yoder x Numero Uno	318	149	97	104	160	109	110	\$55.00
SIR-ROZ 14H013976	SIEMERS BANDARES SIR-ROZ-ET	A12	Bandares x Lottomax	310	129	102	109	174	106	111	\$60.00
DEWARS 14H07748	KINGS-RANSOM 1ST DEWARS-ET	A22	Alta 1st Class x Doorman	306	87	108	110	186	107	113	\$55.00
SAMURI 7H012897	OCD SPRING SAMURI	A22	AltaSpring x Supersire	299	164	105	105	162	107	110	\$65.00
FEDORA 14H013980	SANDY-VALLEY FEDORA-ET	A12	Bandares x Kingboy	299	138	103	106	176	107	111	\$55.00
JSPowerball P	VIEW-HOME POWERBALL P ET	A22	Earnhardt P x Robust	270	148	100	101	125	108	109	\$60.00
MICROCHIP	HINDLEE PICOLA GOLDCHIPDREAM 1418-ET	A22	Picola x Gold Chip	257	119	98	105	173	101	107	\$45.00
CHRISTMAS	EMU BANKS CHRISTMAS-ET	A22	Roumare x Goldbullion	240	218	106	99	126	99	103	\$50.00
SECRETARIAT	ALL.NURE SECRETARIAT	A22	Numero Uno x AltaBaxter	230	61	107	110	146	107	108	\$75.00
MOGUL 7H11314	MOUNTFIELD SSI DCY MOGUL	A12	Dorcy x Marsh	215	104	107	110	128	101	110	\$68.00
MENCHOV	CARENDA PALERMO 270	A22	Palermo x O-Man	205	77	103	101	135	109	108	\$48.00
BARCUDAS PP RED 7H012982	SUNQUEST BARCUDAS-PP-RED-ET	A22	Jax P RC x Numero Uno	187	50	102	101	154	107	110	\$55.00
APPLE-CRISP 7H013778	SIEMERS OCT APPLE CRISP RC	A12	High Octane x Mogul	136	-9	109	112	156	105	112	\$65.00
BRADNICK 7H10999	REGANCREST-GV S BRADNICK	A22	Sanchez x Shottle	80	-26	108	113	127	97	111	\$52.00
GOLD CHIP 7H10920	MR CHASSITY GOLD CHIP	A12	Goldwyn x Shottle	37	-88	105	106	155	99	111	\$70.00

Carenda Perseus 721

PINJARRA

Perseus x Megasire

A22

- Exciting new Genomic Sire
- A22 sire with good components
- Adds width of frame

BPI	307	ASI	148	Overall Type	103	Mam System	106	Cell Count	157	Daughter Fert	108	Survival	108
-----	-----	-----	-----	--------------	-----	------------	-----	------------	-----	---------------	-----	----------	-----



Pinjarra

“GA has a lot of interesting young sires at present, but I like PINJARRA. He is an A22 sire with no big issues and at a pretty good price.”

Emu Banks Christmas-ET

CHRISTMAS

Roumare x Goldbullion

A22

- One of the best in the business for improving body and frames
- Amazing production with over 2500 daughters
- The reliable A22 choice

BPI	240	ASI	218	Overall Type	106	Mam System	99	Cell Count	126	Daughter Fert	99	Survival	103
-----	-----	-----	-----	--------------	-----	------------	----	------------	-----	---------------	----	----------	-----



Christmas Daughter, Kirk & Loader

“We used CHRISTMAS as a daughter proven sire because of his reliable production proof. He has added chest width and capacity into our cows. He combines positive milk flow, with positive deviations. What’s not to like about him”

The popularity of A22 sires is on the rise.

Consumers are looking for natural solutions for health problems and are turning to A22 milk. Selection for A22 milk is simple: consistent use of exclusively A22 sires will deliver an A22 herd within several generations. To fast track this you can test your herd for A22 genes. Contact Genetics Australia if you are interested in testing your herd for A22.

Leading A22 Sires

Name	Full Name	A2 Status	Pedigree	BPI	ASI	Overall Type	Mamm System	Cell Count	Dtr Fertility	Survival	RRP
SUPERDAVE	WARRAMONT SUPERHERO DAVE-ET	A22	Superhero x Doorman	376	236	102	104	162	106	108	\$24.00
LORD 07H013696	SSI SCENARIO LORD	A22	Scenario x Yoder	369	166	97	106	161	115	111	\$24.00
PILBARA	CARENDA PILBARA	A22	Perseus x Powerball P	362	184	102	106	157	111	110	\$20.00
PEMBERTON	CARENDA PEMBERTON	A22	Perseus x Jacey	358	176	105	106	174	109	109	\$24.00
JSMONTANA	IHG MONTANA-ET	A22	Montross x Numero Uno	339	123	103	106	171	112	111	\$26.00
ETHOS	REDMAW PERSEUS ETHOS-ET	A22	Perseus x Eraser	326	136	105	108	163	110	112	\$20.00
MAEBULL	CALISTER MAEBULL	A22	Palermo x Shottle	323	127	102	101	192	111	110	\$24.00
GGISEMINO	SEMINO	A22	Silver x Balisto	321	183	105	108	135	106	111	\$24.00
MRMAGIC	BUNDALONG MAGICTOUCH MISTER-ET	A22	Magictouch x Muscadet	320	139	104	107	142	109	110	\$18.00
DONK	WARRAMONT SUPERHERO DONK-ET	A22	Superhero x Palermo	319	172	103	101	158	107	110	\$16.00
LAGER	ILLAWAMBRA PERSEUS LAGER	A22	Perseus x Salvino	315	150	101	103	145	115	109	\$20.00
MASNAH	PURNIM MVP MASNAH-ET	A22	MVP x Buddha	314	262	105	107	123	98	110	\$20.00
CEPHUS 14H014370	PEAK JOSETTE GDNCR 20408-ET	A22	Gatedancer x Josuper	310	177	101	104	148	107	111	\$26.00
GGIBRENTANO	BRENTANO	A22	Balisto x Sudan	310	119	105	103	171	106	109	\$24.00
GGIKEEPER P	WIL KEEPER P	A22	Kerigan x Supershot	309	123	109	112	178	107	111	\$26.00
JSCOLD P 534H000068	ERNEST ANTHONY COLD P	A22	Powerball P x Beluga	308	122	106	107	144	113	111	\$24.00
PINJARRA	CARENDA PINJARRA	A22	Perseus x Megasire	307	148	103	106	157	108	108	\$20.00
DEWARS 14H07748	KINGS-RANSOM 1ST DEWARS-ET	A22	Alta1stClass x Doorman	306	87	108	110	186	107	113	\$20.00
GGICHARMING	HLM CHARMING	A22	Chevalier x Enforcer	306	142	103	101	165	109	112	\$26.00
FRANKLAND	CARENDA FRANKLAND	A22	Contender x Powerball P	300	119	107	106	179	108	111	\$20.00
SAMURI 7H012897	OCD SPRING SAMURI	A22	AltaSpring x Supersire	299	164	105	105	162	107	110	\$32.00
ITDRAGON P	GEGANIA DRAGON	A22	Clash P x Mogul	293	158	103	106	140	105	110	\$22.00
GGIBASEMENT	BASEMENT	A22	Balisto x Snowman	289	165	104	102	141	108	110	\$22.00
LIBERTY P 7H014132	S-S-I TR MORTZ LIBERTY-P-ET	A22	Moritz x Eraser	276	138	104	107	160	105	111	\$22.00
MEXICOLA	BUNDALONG SUPERSRING WINNER	A22	Superspring x Mogul	276	145	107	108	138	106	111	\$16.00
CLASH P	ANDERSTRUP CLASH	A22	Powerball P x Bookem	273	138	97	99	145	109	108	\$20.00
JSPowerball	VIEW-HOME POWERBALL P ET	A22	Earnhardt P x Robust	270	148	100	101	125	108	109	\$20.00
JSYOLO	BGP YOLO	A22	Bandares x Meridian	268	120	104	111	159	104	111	\$32.00
HOUSE 7H012978	LEANINGHOUSE HELIX 22137	A22	Hang-Time x Jacey	266	111	100	105	170	106	110	\$28.00
MICROCHIP	HINDLEE PICOLA GOLDCHIPDREAM 1418-ET	A22	Picola x Gold Chip	257	119	98	105	173	101	107	\$18.00
CHRISTMAS	EMU BANKS CHRISTMAS-ET	A22	Roumare x Goldbullion	240	218	106	99	126	99	103	\$20.00
SECRETARIAT	ALL.NURE SECRETARIAT	A22	Numero Uno x AltaBaxter	230	61	107	110	146	107	108	\$36.00
JSHOTSPOT	SIEMERS HOTSPOT	A22	Hotline x Monterey	227	118	107	111	139	101	112	\$20.00
JSEXETER	PEAK EXETER	A22	Bourbon x AltaSpring	225	120	105	106	156	104	109	\$36.00
MENCHOV	CARENDA PALERMO 270	A22	Palermo x O-Man	205	77	103	101	135	109	108	\$20.00
BARCUDA PP RED 7H012982	SUNQUEST BARCUDA-PP-RED-ET	A22	Jax P*RC x Numero Uno	187	50	102	101	154	107	110	\$20.00
JSIMMENSE	OUR-FAVOURIT IMMENSE	A22	Jacoby x Beemer	132	-33	111	115	166	101	111	\$45.00
BRADNICK 7H10999	REGANCREST-GV S BRADNICK	A22	Sanchez x Shottle	80	-26	108	113	127	97	111	\$22.00
ITSNEAKER	AL. CE MERIDIAN SNEAKER ET	A22	Meridian x Atwood	34	-27	107	112	102	98	108	\$26.00

MASTITIS RESISTANCE

Carenda Contender 700

FRANKLAND

Contender x Powerball P

A22

- A22 sire that transmits longer teats
- Superior Cell Count combined with Shallow Udders
- Great ratings for Feet & Legs

BPI	300	Rear Leg RV	101	Udder Depth	109	Mam System	106	Cell Count	179	Ligament	103	Fr Teat Place	110
-----	-----	-------------	-----	-------------	-----	------------	-----	------------	-----	----------	-----	---------------	-----



Frankland

“FRANKLAND is a new A22 addition to the FutureGen team who excels in Health and Survival traits. FRANKLAND’s type profile including longer teats, makes him an easy choice for most breeding programs”

Superjet

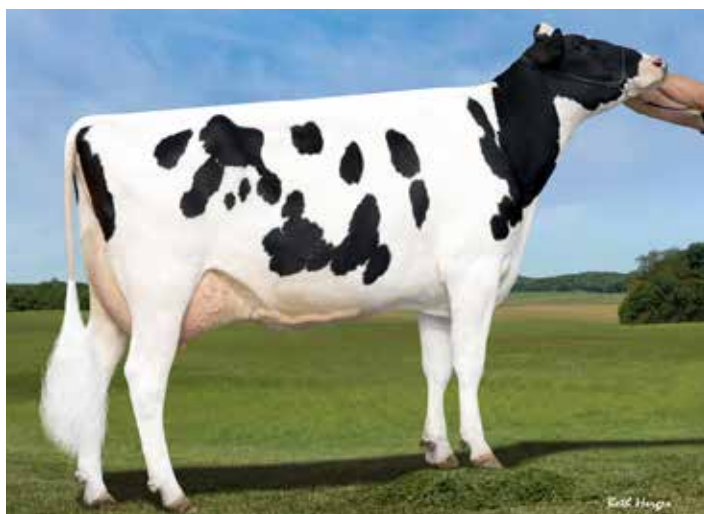
SUPERJET

Superhero x Balisto

A12

- Transmits Shallow Udders and Longer Teats
- Balanced Production with Positive Deviations and Milk flow
- Excellent Daughter Fertility and Survival

BPI	350	Rear Leg RV	94	Udder Depth	109	Mam System	105	Cell Count	178	Ligament	108	Fr Teat Place	105
-----	-----	-------------	----	-------------	-----	------------	-----	------------	-----	----------	-----	---------------	-----



Superjet GD, Sandy-Valley Nu Precious

“There are any number of Superhero sons I could recommend to my clients, but I like SUPERJET. High BPI, no Health issues, calving ease and longer teats. Plenty of positives!”

MASTITIS RESISTANCE

Mastitis is the biggest health cost on a dairy farm through lost production and the cost of treating the infection.

By focusing on a group of type traits combined with Somatic Cell Count, you can improve your herd's mastitis resistance. Udders that are shallow and supported by a strong ligament with correct teat placement are more resistant to mastitis. Cows with correct legs and good locomotion are less likely to damage their udders as they walk long distances.

Cell Count Improving Sires

Name	Full Name	A2 Status	Pedigree	BPI	Cell Count	Mamm System	Rear Leg Rear View	Udder Depth	Ligament	Front Teat Placement	RRP
MAEBULL	CALISTER MAEBULL	A22	Palermo x Shottle	323	192	101	101	106	95	99	\$24.00
DEWARS 14H07748	KINGS-RANSOM 1ST DEWARS-ET	A22	Alta 1stClass x Doorman	306	186	110	94	113	106	109	\$20.00
FRANKLAND	CARENDA FRANKLAND	A22	Contender x Powerball P	300	179	106	101	109	103	110	\$20.00
GGIKEEPER P	WIL KEEPER P	A22	Kerigan x Supershot	309	178	112	100	110	112	107	\$26.00
J11CRUSH	ELMAR CRUSH-ET	A12	Crush x Goldwyn	250	178	113	104	111	108	111	\$20.00
SUPERJET	SUPERJET	A12	Superhero x Balisto	350	178	105	94	109	108	105	\$24.00
FEDORA 14H013980	SANDY-VALLEY FEDORA-ET	A12	Bandares x Kingboy	299	176	106	104	106	104	101	\$22.00
JSSUPERHERO	ENDCO SUPERHERO-ET	A12	Supershot x Numero Uno	342	175	105	96	109	103	101	\$20.00
PEMBERTON	CARENDA PEMBERTON	A22	Perseus x Jacey	358	174	106	99	107	105	104	\$24.00
SIR-ROZ 14H013976	SIEMERS BANDARES SIR-ROZ-ET	A12	Bandares x Lottomax	310	174	109	100	109	107	103	\$25.00
MICROCHIP	HINDLEE PICOLA GOLDCHIPDREAM 1418-ET	A22	Picola x Gold Chip	257	173	105	100	99	102	104	\$18.00
GGIBRENTANO	BRENTANO	A22	Balisto x Sudan	310	171	103	100	107	101	103	\$24.00
JSMONTANA	IHG MONTANA-ET	A22	Montross x Numero Uno	339	171	106	99	108	103	102	\$26.00
JSSALVATORE	MR. SALVATORE RC-ET	A11	Supershot x Sympathico	190	171	103	100	105	102	104	\$18.00
HOUSE 7H012978	LEANINGHOUSE HELIX 22137	A22	Hang-Time x Jacey	266	170	105	101	109	103	107	\$28.00
ENOUGHROPE	KAARMONA DENTON-TWIN	A12	Bubba x Rubicon	324	168	106	100	110	103	104	\$20.00
JSMATERMIND	MR MASTERMIND	A12	Montana x Supersire	331	168	106	99	105	104	98	\$22.00
ENDGAME	WINAVIEW SUPERHERO AVENGER	A12	Superhero x Monterey	375	167	106	103	110	108	102	\$26.00
JSIMMENSE	OUR-FAVOURIT IMMENSE	A22	Jacoby x Beemer	132	166	115	102	114	111	113	\$45.00
GGICHARMING	HLM CHARMING	A22	Chevalier x Enforcer	306	165	101	101	107	102	99	\$26.00

CALVING EASE

No matter how you look at it, Holstein heifer calves from 2-year-old Holstein heifers are worth dollars.

Genetically, they will be among your best and surplus heifers always have a market. Less stress on the calf at calving time leads to reduced calf mortality, better growth rates and an overall healthier calf. Use calving ease sires to breed more heifer replacements and to give your calves a better start to life.

Carenda Palermo 270

MENCHOV

Palermo x O-Man A22

BPI	205	Calving Ease	104	Overall Type	103	Mam System	101
Cell Count	135	Daughter Fert	109	Survival	108		



Menchov Daughter, Menchov 528

- Great all-round Daughter Proven Calving Ease option
- Super Protein and Milk ratings with 145 daughters
- Daughters display nice Frames and Sloping Rumps

Basement

GGIBASEMENT

Balisto x Snowman A22

BPI	289	Calving Ease	104	Overall Type	104	Mam System	102
Cell Count	141	Daughter Fert	108	Survival	110		



GGIBASEMENT

- A22 Calving Ease option from Germany
- Great Daughter fertility and Survival
- Superior Protein and Protein Deviation

Leading Calving Ease Sires

Name	Full Name	A2 Status	Pedigree	BPI	Calving Ease	Overall Type	Mam System	Cell Count	Dr Fertility	Survival	RRP
JSSALVATORE	MR. SALVATORE RC-ET	A11	Supershot x Sympathico	190	105	103	103	171	103	110	\$18.00
MENCHOV	CARENDA PALERMO 270	A22	Palermo x O-Man	205	104	103	101	135	109	108	\$20.00
GGIBASEMENT	BASEMENT	A22	Balisto x Snowman	289	104	104	102	141	108	110	\$22.00
GGIPALETTI PP RC	PALETTI PP RC	A12	Powerball P x Effect	265	104	100	103	145	108	109	\$22.00
LORD 07H013696	SSI SCENARIO LORD	A22	Scenario x Yoder	369	104	97	106	161	115	111	\$24.00
MOGUL 7H11314	MOUNTFIELD SSI DCY MOGUL	A12	Dorcy x Marsh	215	103	107	110	128	101	110	\$42.00
MAEBULL	CALISTER MAEBULL	A22	Palermo x Shottle	323	103	102	101	192	111	110	\$24.00
JSMARDIGRAS	MR MOVIESTAR MARDI GRAS	A12	Mogul x Planet	260	103	104	109	139	109	113	\$20.00
GGICHARMING	HLM CHARMING	A22	Chevalier x Enforcer	306	103	103	101	165	109	112	\$26.00
CLASH P	ANDERSTRUP CLASH	A22	Powerball P x Bookem	273	103	97	99	145	109	108	\$20.00
JSGLAMOR	IHG GLAMOR-ET	A12	Cashcoin x Supersire	265	103	106	108	143	107	111	\$22.00
GUTHRIE 7H9420	FUSTEAD GOLDWYN GUTHRIE	A12	Goldwyn x Blitz	189	102	108	110	138	101	109	\$20.00
WRANGLER	RENGAW MANOMAN WRANGLER-ET	A11	Man-O-Man x Shottle	229	102	106	103	151	105	107	\$18.00
GOLD CHIP 7H10920	MR CHASSITY GOLD CHIP	A12	Goldwyn x Shottle	37	102	105	106	155	99	111	\$42.00
MICROCHIP	HINDLEE PICOLA GOLDCHIPDREAM 1418-ET	A22	Picola x Gold Chip	257	102	98	105	173	101	107	\$18.00
JSMONTANA	IHG MONTANA-ET	A22	Montross x Numero Uno	339	102	103	106	171	112	111	\$26.00
GGIBRENTANO	BRENTANO	A22	Balisto x Sudan	310	102	105	103	171	106	109	\$24.00
DEWARS 14H07748	KINGS-RANSOM 1ST DEWARS-ET	A22	Alta1stClass x Doorman	306	102	108	110	186	107	113	\$20.00
HOUSE 7H012978	LEANINGHOUSE HELIX 22137	A22	Hang-Time x Jacey	266	102	100	105	170	106	110	\$28.00
JSANSWER P	ENDCO THE ANSWER-PO-ET	A12	Montross x Earnhardt P	204	102	100	105	126	107	110	\$18.00
GGIHOTSPOT P	WIL HOTSPOT P	A12	Superhero x Powerball P	343	102	104	103	159	108	113	\$36.00

LONGEVITY

Involuntary culling reduces farm profits and no farmer likes cows that leave the herd early.

These cows are a cost to the business in more ways than one. On the other hand, profitable cows are those that produce over a number of lactations. By selecting for longevity, we improve the animal welfare outcomes of the herd and this can only be a good thing both socially and economically.

Mr Moviestar Mardi Gras

JsMARDIGRAS

Mogul x Planet

A12

BPI	260	Survival	113	Overall Type	104	Mam System	109
Cell Count	139	Daughter Fert	109	Udder Depth	110		



MardiGras Daughter, Coorimungie MardiGras 6386

- Superior Udders lead to long Herdlife
- Outstanding ratings for Survival and Daughter Fertility
- Built to last with correct Feet, Legs and Rumps

Kaarmona Denton-Twin

ENOUGHROPE

Bubba x Rubicon

A12

BPI	324	Survival	112	Overall Type	105	Mam System	106
Cell Count	168	Daughter Fert	108	Udder Depth	110		



Enoughrope Sire, Bubba

- Genomic sire with a trait profile that points to superior Longevity
- Solid Type with Shallow Udders
- Imported family with solid Australian performance

Leading Longevity Sires

Name	Full Name	A2 Status	Pedigree	BPI	Survival	Overall Type	Mam System	Cell Count	Dtr Fertility	Udder Depth	RRP
ITLETSGO	VOGUE LETSGO	A12	Applicable x Powerball P	363	115	106	109	154	113	112	\$36.00
DEWARS 14H07748	KINGS-RANSOM 1ST DEWARS-ET	A22	Alta1stClass x Doorman	306	113	108	110	186	107	113	\$20.00
ENDGAME	WINAVIEW SUPERHERO AVENGER	A12	Superhero x Monterey	375	113	107	106	167	113	110	\$26.00
JSMARDIGRAS	MR MOVIESTAR MARDI GRAS	A12	Mogul x Planet	260	113	104	109	139	109	110	\$20.00
APPLE-CRISP 7H013778	SIEMERS OCT APPLE CRISP RC	A12	High Octane x Mogul	136	112	109	112	156	105	114	\$24.00
JSHOTSPOT	SIEMERS HOTSPOT	A22	Hotline x Monterey	227	112	107	111	139	101	107	\$20.00
ITINNUENDO	GO-FARM INNUENDO	A12	AltaToohot x Superman	296	112	106	108	151	106	107	\$20.00
ENOUGHROPE	KAARMONA DENTON-TWIN	A12	Bubba x Rubicon	324	112	105	106	168	108	110	\$20.00
ETHOS	REDMAW PERSEUS ETHOS-ET	A22	Perseus x Eraser	326	112	105	108	163	110	106	\$20.00
KADE	WILARA HERO KADE-ET	A11	Superhero x Silver	357	112	105	104	158	111	106	\$18.00
JSIMMENSE	OUR-FAVOURIT IMMENSE	A22	Jacoby x Beemer	132	111	111	115	166	101	114	\$45.00
GGIKEEPER P	WIL KEEPER P	A22	Kerigan x Supershot	309	111	109	112	178	107	110	\$26.00
BRADNICK 7H10999	REGANCREST-GV S BRADNICK	A22	Sanchez x Shottle	80	111	108	113	127	97	109	\$20.00
FRANKLAND	CARENDA FRANKLAND	A22	Contender x Powerball P	300	111	107	106	179	108	109	\$20.00
JSSUPERHERO	ENDCO SUPERHERO-ET	A12	Supershot x Numero Uno	342	111	107	105	175	113	109	\$20.00
JSCOLD P 534H000068	ERNEST ANTHONY COLD P	A22	Powerball P x Beluga	308	111	106	107	144	113	110	\$24.00
JSGLAMOR	IHG GLAMOR-ET	A12	Cashcoin x Supersire	265	111	106	108	143	107	101	\$22.00
GGISEMINO	SEMINO	A22	Silver x Balisto	321	111	105	108	135	106	108	\$24.00
GOLD CHIP 7H10920	MR CHASSITY GOLD CHIP	A12	Goldwyn x Shottle	37	111	105	106	155	99	111	\$42.00
SUPERJET	SUPERJET	A12	Superhero x Balisto	350	111	105	105	178	110	109	\$24.00
MEXICOLA	BUNDALONG SUPERSRING WINNER	A22	Superspring x Mogul	276	111	107	108	138	106	109	\$16.00

FEED SAVED

Australia has led the way on selecting for efficient cows.

It is an example of one of the new-generation “genomic only” breeding values. The feed saved breeding value provides a mechanism for farmers to improve the efficiency of their herd without impacting on production. Any increase in feed efficiency is valuable for dairy farmers because feed represents about half of a typical dairy farm's variable costs.



Ghezzi Gplus Duplo

ITDUPLO

Superhero x Powerball P

A12

BPI	346	ASI	140	Overall Type	103	Feed Saved	94
Cell Count	156	Daughter Fert	113	Survival	109		



ITDuplo

- Great combination of efficiency and production
- Excellent Daughter fertility rating
- A22 and Polled!

Leading Feed Saved Sires

Name	Full Name	A2 Status	Pedigree	BPI	Feed Saved	ASI	Overall Type	Cell Count	Dtr Fertility	Survival	RRP
MICROCHIP	HINDLEE PICOLA GOLDCHIPDREAM 1418-ET	A22	<i>Picola x Gold Chip</i>	257	129	119	98	173	101	107	\$18.00
JSPowerball P	VIEW-HOME POWERBALL P ET	A22	<i>Earnhardt P x Robust</i>	270	111	148	100	125	108	109	\$20.00
GGIBRENTANO	BRENTANO	A22	<i>Balisto x Sudan</i>	310	108	119	105	171	106	109	\$24.00
BRADNICK 7H10999	REGANCREST-GV S BRADNICK	A22	<i>Sanchez x Shottle</i>	80	101	-26	108	127	97	111	\$22.00
ITDUPLO	GHEZZI GPLUS DUPLO	A12	<i>Superhero x Powerball P</i>	346	94	140	103	156	113	109	\$20.00
ITDRAGON P	GEGANIA DRAGON	A22	<i>Clash P x Mogul</i>	293	93	158	103	140	105	110	\$22.00
CLASHP	ANDERSTRUP CLASH	A22	<i>Powerball P x Bookem</i>	273	87	138	97	145	109	108	\$20.00
SIR-ROZ 14H013976	SIEMERS BANDARES SIR-ROZ-ET	A12	<i>Bandares x Lottomax</i>	310	82	129	102	174	106	111	\$25.00
GGIPALETTI PP RC	PALETTI PP RC	A12	<i>Powerball P x Effect</i>	265	71	131	100	145	108	109	\$22.00
JSANSWER P	ENDCO THE ANSWER-PO-ET	A12	<i>Montross x Earnhardt P</i>	204	66	81	100	126	107	110	\$18.00
J11SALON	ELMAR SALON-ET	A12	<i>Solomon x Goldwyn</i>	225	65	39	110	142	107	110	\$20.00
GOLD CHIP 7H10920	MR CHASSITY GOLD CHIP	A12	<i>Goldwyn x Shottle</i>	37	62	-88	105	155	99	111	\$42.00
MRMAGIC	BUNDALONG MAGICTOUCH MISTER-ET	A22	<i>Magictouch x Muscadet</i>	320	61	139	104	142	109	110	\$18.00
CYCLONE 7H012858	OCD YODER CYCLONE-ET	A12	<i>Yoder x Numero Uno</i>	318	58	149	97	160	109	110	\$28.00
GUTHRIE 7H9420	FUSTEAD GOLDWYN GUTHRIE	A12	<i>Goldwyn x Blitz</i>	189	43	75	108	138	101	109	\$20.00

HEAT TOLERANCE

It makes sense that a country like Australia, developed a breeding value for Heat Tolerance.

Although environment and management have a big impact on a cow's ability to deal with heat, there is no doubt that we can breed cows that are genetically superior for heat tolerance. The Heat Tolerance ABV allows you to identify animals that can handle hot and humid conditions with reduced impact on production.

Kings-Ransom 1st Dewars-ET
14H07748

DEWARS

Alta1stClass x Doorman
A22

BPI	306	ASI	87	Overall Type	108	Heat Tol	107
Cell Count	186	Daughter Fert	107	Survival	113		



Dewars Dam, Kings-Ransom DM Debonair-ET

- A22 sire with Superior Type
- Superior Cell Count, Survival and Longevity
- Proven Calving Ease Option

Leading Heat Tolerance Sires

Name	Full Name	A2 Status	Pedigree	BPI	Heat Tol	ASI	Overall Type	Cell Count	Dtr Fertility	Survival	RRP
APPLE-CRISP 7H013778	SIEMERS OCT APPLE CRISP RC	A12	<i>High Octane x Mogul</i>	136	111	-9	109	156	105	112	\$24.00
JSBREWERS RC	BLEXYS BREWER ET RC	A12	<i>Diamondback x Goldwyn</i>	90	108	-38	105	141	104	104	\$32.00
BRADNICK 7H10999	REGANCREST-GV S BRADNICK	A22	<i>Sanchez x Shottle</i>	80	107	-26	108	127	97	111	\$22.00
DEWARS 14H07748	KINGS-RANSOM 1ST DEWARS-ET	A22	<i>Alta1stClass x Doorman</i>	306	107	87	108	186	107	113	\$20.00
ITEUDON	GO-FARM ROYAL EUDON	A12	<i>Million x Shottle</i>	116	106	27	107	121	103	106	\$24.00
GUTHRIE 7H9420	FUSTEAD GOLDWYN GUTHRIE	A12	<i>Goldwyn x Blitz</i>	189	106	75	108	138	101	109	\$20.00
JSANSWERP	ENDCO THE ANSWER-PO-ET	A12	<i>Montross x Earnhardt P</i>	204	104	81	100	126	107	110	\$18.00
JSIMMENSE	OUR-FAVOURIT IMMENSE	A22	<i>Jacoby x Beemer</i>	132	104	-33	111	166	101	111	\$45.00
JSMARDIGRAS	MR MOVIESTAR MARDI GRAS	A12	<i>Mogul x Planet</i>	260	103	92	104	139	109	113	\$20.00
GOLD CHIP 7H10920	MR CHASSITY GOLD CHIP	A12	<i>Goldwyn x Shottle</i>	37	102	-88	105	155	99	111	\$42.00
J11SALON	ELMAR SALON-ET	A12	<i>Solomon x Goldwyn</i>	225	102	39	110	142	107	110	\$20.00
MAEBULL	CALISTER MAEBULL	A22	<i>Palermo x Shottle</i>	323	102	127	102	192	111	110	\$24.00
BARCUDA PP RED 7H012982	SUNQUEST BARCUDA PP RED-ET	A22	<i>Jax P RC x Numero Uno</i>	187	101	50	102	154	107	110	\$20.00
JSGLAMOR	IHG GLAMOR-ET	A12	<i>Cashcoin x Supersire</i>	265	101	133	106	143	107	111	\$22.00
HOUSE 7H012978	LEANINGHOUSE HELIX 22137	A22	<i>Hang-Time x Jacey</i>	266	100	111	100	170	106	110	\$28.00
ITDUPL0	GHEZZI GPLUS DUPL0	A12	<i>Superhero x Powerball P</i>	346	100	140	103	156	113	109	\$20.00
JSSUPERHERO	ENDCO SUPERHERO-ET	A12	<i>Supershot x Numero Uno</i>	342	100	125	107	175	113	111	\$20.00
JSSALVATORE	MR. SALVATORE-ET	A11	<i>Supershot x Sympathico</i>	190	100	77	103	171	103	110	\$18.00

POLLED

The dairy industry's increasing focus on animal welfare issues has driven the genetics industry to find ways of addressing these welfare concerns.

A great example is the issue of dehorning. Through the use of genomic technology and by shortening the generation interval, we have been able to breed sires that transmit the polled gene that are more than competitive with the best bulls in the breed for profitability. The use of polled sires provides a long term, genetic solution to the issue of dehorning.

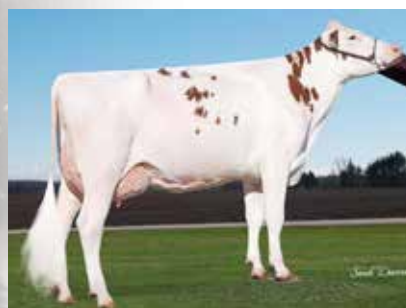
Paletti PP RC

GGIPALETTI PP RC

Powerball P x Effect

A12

BPI	265	ASI	131	Overall Type	100	Mam System	103
Cell Count	145	Daughter Fert	108	Survival	109		



Paletti Dam, Ms Sunview Se Suri

- Popular Homozygous Polled Sire
- Solid ratings for Health and Fertility
- Shallow, Well Attached Udders

Polled Sires

Name	Full Name	A2 Status	Pedigree	BPI	ASI	Overall Type	Mam System	Cell Count	Dtr Fertility	Survival	RRP
GGIPALETTI PP	PALETTI PP	A12	Powerball P x Effect	265	131	100	103	145	108	109	\$22.00
BARCUDA PP RED 7H012982	SUNQUEST BARCUDA-PP-RED-ET	A22	Jax P RC x Numero Uno	187	50	102	101	154	107	110	\$20.00
JSPJ PP RED	SIMPLE-DREAMS PJ PP RED-ET	A22	Lucky PP RED x Montross	157	26	103	106	147	107	111	\$28.00
JSANSWER P	ENDCO THE ANSWER-PO-ET	A12	Montross x Earnhardt P	204	81	100	105	126	107	110	\$18.00
JSPowerball P	VIEW-HOME POWERBALL P ET	A22	Earnhardt P x Robust	270	148	100	101	125	108	109	\$24.00
CLASH P	ANDERSTRUP CLASH	A22	Powerball P x Bookem	273	138	97	99	145	109	108	\$20.00
LIBERTY P 7H014132	S-S-I TR MORTZ LIBERTY-P-ET	A22	Moritz x Eraser	276	138	104	107	160	105	111	\$26.00
ITDRAGON P	GEGANIA DRAGON TV TL TY PC CF	A22	Clash P x Mogul	293	158	103	106	140	105	110	\$22.00
JSCOLD P	ERNEST ANTHONY COLD P	A22	Powerball P x Beluga	308	122	106	107	144	113	111	\$24.00
GGIKeeper P	WIL KEEPER P	A22	Kerigan x Supershot	309	123	109	112	178	107	111	\$26.00
GGIHOTSPOT P	WIL HOTSPOT P	A12	Superhero x Powerball P	343	179	104	103	159	108	113	\$36.00
WALPOLE P	CARENDA WALPOLE P	A12	Perseus x Powerball P	359	174	101	102	159	116	109	\$20.00

US HOLSTEIN PROOFS

Leading TPI Type Sires

Name	Full Name	A2 Status	Pedigree	TPI	Net Merit	PTA Type	UDC	SCE	PTA DPR	SCR	RRP
CEPHUS 14H014370	PEAK JOSETTE GDNCR 20408-ET	A22	<i>Gatedancer x Josuper</i>	2726	926	1.29	2.21	6.8	0.8	2.2	\$26.00
JSYOLO	BGP YOLO	A22	<i>Bandares x Meridian</i>	2717	850	2.66	3.18	7.3	0.9	4.0	\$32.00
JSWOODFORD	MIDAS-TOUCH WOODFORD-ET	A22	<i>Bourbon x Rubicon</i>	2698	840	2.39	2.14	7.3	-0.2		\$60.00
GGIHOTSPOT P	WIL HOTSPOT P	A12	<i>Superhero x Powerball P</i>	2661	790	2.14	2.10	6.1	0.8		\$36.00
SUPERJET	SUPERJET	A12	<i>Superhero x Ballisto</i>	2660	806	2.23	1.97	6.1	0.9		\$24.00
HOUSE 07H012978	LEANINGHOUSE HELIX 22137	A22	<i>Hang-Time x Jacey</i>	2652	727	2.61	2.52	7.5	2.8	1.0	\$28.00
SAMURI 7H012897	OCD SPRING SAMURI	A22	<i>AltaSpring x Supersire</i>	2651	814	2.01	2.03	7.0	1.1	3.4	\$32.00
JSLEXELL	PEAK LEXELL	A12	<i>Superhero x Monterey</i>	2641	743	2.67	3.10	7.4	0.6	-0.2	\$28.00
LORD 07H013696	SSI SCENARIO LORD	A22	<i>Scenario x Yoder</i>	2628	780	1.52	1.88	5.6	2.1	0.3	\$24.00
SIR-ROZ 14H013976	SIEMERS BANDARES SIR-ROZ-ET	A12	<i>Bandares x Lottomax</i>	2622	826	1.67	2.18	7.7	1.4	0.1	\$25.00
JSEXETER	PEAK EXETER	A22	<i>Bourbon x Altaspring</i>	2606	758	1.91	1.50	8.0	1.6	2.9	\$36.00

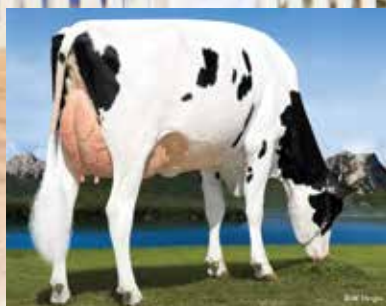
Peak Josette Gdnrc 20408-ET

CEPHUS 14H014370

Gatedancer x Josuper

A22

TPI	2726	PTA Type	1.29	UDC	2.21	Net Merit	926
SCE	6.8	PTA DPR	0.5	SCR	2.2		



Cephus Dam T-Spruce Jossette

- Modern High TPI sire with good Net Merit
- A22 with Positive DPR
- Superior Semen Conception Rate

Our-Favourit Immense

JSIMMENSE

Jacoby x Beemer

A22

TPI	1949	PTA Type	4.02	UDC	2.941	FLC	2.57
DF	2.27	FUA	4.71	RUH	3.87		



Immense Dam, Our-Favorite Unlimited

- Built to breed Show Winning Type
- Outstanding Udder ratings across the board
- A22 is a bonus

Leading US Type Sires

Name	Full Name	A2 Status	Pedigree	TPI	PTA Type	UDC	FLC	DF	FUA	RUH	RRP
JSIMMENSE	OUR-FAVOURIT IMMENSE	A22	<i>Jacoby x Beemer</i>	1949	4.02	2.91	2.57	2.27	4.71	3.87	\$45.00
JSHOTSPOT	SEIMERS HOTSPOT	A12	<i>Hotline x Monterery</i>	2515	3.85	3.31	2.24	3.04	4.26	4.55	\$20.00
ITSNEAKER	AL.CE MERIDIAN SNEAKER-ET	A22	<i>Meridian x Atwood</i>	2029	3.52	3.36	1.81	3.49	3.68	4.74	\$26.00
ITLETSGO	VOGUE LETSGO	A12	<i>Applicable x Powerball P</i>	2577	3.21	3.09	1.61	1.7	3.83	4.25	\$36.00
JSDEMAN	EDG DEMAN	A12	<i>Mogul x Atwood</i>	2394	3.21	2.81	2.94	2.29	3.56	3.8	\$24.00
APPLE-CRISP 07H013778	SIEMERS OCT APPLE CRISP	A12	<i>High Octane x Mogul</i>	2085	3.08	2.75	1.45	2.04	3.46	4.18	\$24.00
JSBREWER RC	BLEXYS BREWER ET RC	A12	<i>Diamondback x Goldwyn</i>	1920	3.07	2.76	1.81	2.4	3.04	4.29	\$32.00
JSLEXELL	PEAK LEXELL	A12	<i>Superhero x Monterey</i>	2641	2.67	3.10	1.05	1.57	3.31	4.17	\$28.00
JSYOLO	BGP YOLO	A22	<i>Bandares x Meridian</i>	2717	2.66	3.18	0.65	1.02	3.52	4.05	\$32.00
HOUSE 07H012978	LEANINGHOUSE HELIX 22137	A22	<i>Hang-Time x Jacey</i>	2652	2.61	2.52	1.13	1.86	2.73	3.61	\$28.00
SECRETARIAT	ALL.NURE SECRETARIAT	A22	<i>Numero Uno x AltaBaxter</i>	2233	2.53	3.05	1.59	1.55	2.84	4.48	\$36.00

ABVS Holstein Breeding Values / August 2019

PRODUCTION																								
Code	A2 Status	Pedigree	BPI	Rel%	ASI	Protein (Kg)	Protein %	Milk (L)	Fat (Kg)	Fat %	Rel%	Daughters	Herds	RIP %	Milking Speed	Temperament	Likeability	Rel %	Cell Count	Rel%	Dir Fertility	Rel%	Calving Ease	Rel%
SUPERDAVE	A22	Superhero x Doorman	376	68	236	21	0.50%	-175	39	0.67%	78	0	0	0	100	104	104	64	162	69	106	56	101	42
ENDGAME	A12	Superhero x Monterey	375	67	162	18	0.23%	197	33	0.36%	78	0	0	0	102	104	105	64	167	69	113	55	101	41
LORD 07H013696	A22	Scenario x Yoder	369	66	166	17	0.21%	209	40	0.45%	77	0	0	0	102	102	104	61	161	69	115	54	104	60
ITLETSGO	A12	Applicable x Powerball P	363	67	153	23	0.20%	465	22	0.03%	78	0	0	0	103	102	106	65	154	68	113	53	101	37
PILBARA	A22	Perseus x Powerball P	362	65	184	28	0.27%	513	22	0.00%	77	0	0	0	102	103	105	61	157	67	111	49	103	41
WALPOLE P	A12	Perseus x Powerball P	359	66	174	19	0.38%	-36	22	0.34%	77	0	0	0	100	100	104	62	159	67	116	51	103	41
PEMBERTON	A22	Perseus x Jacey	358	66	176	23	0.33%	189	21	0.19%	77	0	0	0	101	103	105	63	174	68	109	53	104	46
KADE	A11	Superhero x Silver	357	67	191	21	0.28%	242	37	0.39%	78	0	0	0	102	103	105	62	158	69	111	54	102	43
TEXMEX	A12	Vador x Buddha	353	67	230	21	0.34%	91	54	0.72%	78	0	0	0	101	101	102	63	144	69	107	55	103	53
ANAKIN	A12	Vador x Anchor	352	66	234	19	0.42%	-127	51	0.81%	78	0	0	0	101	101	102	59	143	69	108	50	101	46
SUPERJET	A12	Superhero x Balisto	350	67	164	19	0.25%	215	30	0.31%	77	0	0	0	102	103	105	64	178	69	110	55	102	42
ITDUPL0	A12	Superhero x Powerball P	346	66	140	21	0.19%	401	20	0.04%	77	0	0	0	102	103	105	62	156	69	113	52	101	40
GGIHOTSPOT P	A12	Superhero x Powerball P	343	66	179	29	0.25%	593	21	-0.06%	78	0	0	0	102	102	105	61	159	69	108	51	102	60
JSSUPERHERO	A12	Supershot x Numero Uno	342	72	125	22	0.10%	632	19	-0.12%	80	0	0	0	101	104	105	69	175	79	113	62	101	85
JSMONTANA	A22	Montross x Numero Uno	339	71	123	14	0.03%	450	40	0.30%	75	13	5	92	104	101	106	76	171	80	112	65	102	81
SILVERSTAR	A12	Silverline x Wyman	336	67	195	22	0.26%	299	41	0.41%	78	0	0	0	103	102	104	65	140	68	108	54	102	51
SILVERLINE	A12	Silver x Fever	334	70	240	29	0.24%	622	55	0.41%	79	1	1	100	105	102	106	70	133	71	100	61	101	85
JSMMASTERMIND	A12	Montana x Supersire	331	67	164	24	0.09%	719	38	0.10%	77	0	0	0	102	103	106	66	168	69	108	56	100	61
ETHOS	A22	Perseus x Eraser P	326	66	136	23	0.21%	450	11	-0.13%	77	0	0	0	103	104	106	63	163	67	110	51	103	39
FASHIONABULL	A12	Perseus x Royalman	326	66	169	22	0.36%	105	15	0.15%	77	0	0	0	100	102	104	64	139	67	114	53	103	41
ENOUGHROPE	A12	Bubba x Rubicon	324	65	129	10	0.15%	94	37	0.47%	77	0	0	0	105	103	106	62	168	67	108	50	103	33
MAEBULL	A22	Palermo x Shottle	323	85	127	20	0.15%	429	19	0.01%	96	129	36	18	101	99	103	83	192	86	111	78	103	96
GGISEMINO	A22	Silver x Balisto	321	69	183	20	0.28%	206	36	0.39%	79	0	0	0	105	102	106	69	135	70	106	60	101	70
MRMAGIC	A22	Magictouch x Muscadet	320	65	139	15	0.30%	-16	18	0.27%	77	0	0	0	104	103	106	60	142	67	109	49	101	31
DONK	A22	Superhero x Palermo	319	68	172	28	0.19%	664	26	-0.04%	78	0	0	0	103	104	105	65	158	69	107	56	101	42
CYCLONE 7H012858	A12	Yoder x Numero Uno	318	68	149	12	0.15%	147	45	0.55%	78	0	0	0	103	104	105	66	160	70	109	59	102	57
LAGER	A22	Perseus x Salvino	315	65	150	23	0.21%	447	20	0.02%	77	0	0	0	102	101	104	59	145	67	115	49	103	38
MASNAH	A22	MVP x Buddha	314	70	262	28	0.40%	243	52	0.60%	80	0	0	0	103	106	107	72	123	72	98	63	101	89
CEPHUS 14H014370	A22	Gatedancer x JoSuper	310	66	177	25	0.15%	633	37	0.15%	78	0	0	0	102	102	105	61	148	69	107	52	102	42
GGIBRENTANO	A22	Balisto x Sudan	310	73	119	12	0.30%	-124	11	0.24%	75	37	3	100	105	102	104	84	171	84	106	81	102	74
SIR-ROZ 14H013976	A12	Bandares x Lottomax	310	66	129	14	0.17%	169	29	0.31%	77	0	0	0	102	102	104	62	174	69	106	52	101	56
GGIKEEPER P	A22	Kerigan x Supershot	309	67	123	26	0.03%	904	18	-0.29%	78	0	0	0	101	101	104	63	178	70	107	53	100	40
JSCOLD P 534H000068	A22	Powerball P x Beluga	308	68	122	23	0.16%	535	10	-0.18%	78	0	0	0	103	101	104	66	144	70	113	56	101	66
PINJARRA	A22	Perseus x Megasire	307	65	148	12	0.26%	-67	33	0.52%	77	0	0	0	103	102	105	62	157	67	108	50	103	46
DEWARS 14H07748	A22	Alta1stClass x Doorman	306	70	87	4	0.16%	-170	25	0.46%	79	0	0	0	101	103	104	69	186	76	107	61	102	70
GGICHARMING	A22	Chevalier x Enforcer	306	67	142	24	0.08%	730	27	-0.06%	78	0	0	0	102	101	104	64	165	69	109	55	103	64
FRANKLAND	A22	Contender x Powerball P	300	65	119	24	0.08%	730	16	-0.22%	78	0	0	0	100	103	105	61	179	67	108	49	102	51
FEDORA 14H013980	A12	Bandares x Kingboy	299	66	138	20	0.17%	402	23	0.09%	78	0	0	0	101	101	104	62	176	69	107	53	98	57
SAMURI 7H012897	A22	AltaSpring x Supersire	299	68	164	22	0.18%	467	33	0.19%	77	0	0	0	101	103	105	68	162	69	107	60	101	62
ITINNUENDO	A12	AtlaTooth x Supersire	296	65	161	24	0.12%	652	33	0.08%	77	0	0	0	102	101	105	60	151	67	106	50	101	35
ITDRAGON P	A22	Clash P x Mogul	293	65	158	20	0.30%	151	19	0.18%	77	0	0	0	103	100	103	61	140	67	105	50	101	29
GGIBASEMENT	A22	Balisto x Snowman	289	71	165	24	0.26%	389	20	0.05%	79	0	0	0	100	100	103	74	141	76	108	63	104	67
GGIBAJOU	A12	Barclay x Racer	285	67	188	26	0.27%	432	29	0.15%	78	0	0	0	102	102	104	65	144	69	101	57	104	45
JSDAMAN	A12	Mogul x Atwood	285	78	165	18	0.22%	248	36	0.36%	83	0	0	0	104	104	106	85	140	88	101	84	99	73
MEXICOLA	A22	Superspring x Mogul	278	66	145	11	0.25%	-71	34	0.53%	77	0	0	0	104	104	105	62	138	67	106	51	100	34
LIBERTY P 7H014132	A22	Moritz X Eraser	276	66	138	25	0.05%	823	26	-0.13%	77	0	0	0	103	102	105	61	160	68	105	51	103	37
JSLEXELL	A12	Superhero x Monterey	275	67	134	25	0.07%	778	23	-0.14%	78	0	0	0	100	102	105	64	160	69	106	56	101	42
JSPowerball P	A22	Earnhardt P x Robust	270	83	148	32	0.23%	749	0	-0.46%	92	92	23	52	102	101	104	80	125	87	108	83	101	96
JSYOLO	A22	Bandares x Meridian	268	67	120	16	0.06%	501	32	0.15%	78	0	0	0	103	103	104	63	159	70	104	54	102	40
HOUSE 7H012978	A22	Hang-Time x Jacey	266	67	111	11	0.17%	89	24	0.29%	78	0	0	0	102	101	104	64	170	70	106	56	102	65
GGIPALETTI PP RC	A12	Powerball P x Effect	265	67	131	20	0.15%	455	20	0.01%	78	0	0	0	101	101	103	63	145	70	108	54	104	67
JSGLAMOR	A12	Cashcoin x Supersire	265	73	133	23	0.09%	658	23	-0.08%	81	3	2	100	102	102	105	71	143	83	107	63	103	59
JSMARDIGRAS	A12	Mogul x Planet	260	84	92	11	0.12%	157	19	0.18%	91	52	18	21	102	103	106	86	139	91	109	88	103	88
MICROCHIP	A22	Picola x Goldchip	257	79	119	22	0.06%	720	20	-0.15%	91	145	29	79	103	103	105	73	173	75	101	67	102	97
J11CRUSH	A12	Crush x Goldwyn	250	70	72	11	0.15%	94	5	0.01%	79	0	0	0	102	102	105	68	178	70	103	61	100	50
CHRISTMAS	A22	Roumare x Goldbullion	240	93	218	25	0.34%	250	41	0.43%	99	2786	323	24	101	101	103	99	126	99	99	96	100	99
SECRETARIAT	A22	Numero Uno x Baxter	230	60	61	11	0.02%	355	12	-0.05%	59	0	0	0	104	103	104	76	146	77	107	73	101	70
WRANGLER	A11	Man-O-Man x Shottle	229	86	145	15	0.28%	31	23	0.31%	97	501	90	80	97	101	101	85	151	89	105	72	102	99
JSHOTSPOT	A22	Hotline x Monterey	227	66	118	22	0.08%	678	18	-0.16%	78	0	0	0	102	103	105	62	139	68	101	51	102	42
J11SALON	A12	Solomon x Goldwyn	225	70	39	10	0.00%	389	3	-0.20%	80	0	0	0	103	101	104	69	142	71	107	62	100	49
JSEXETER	A22	Bourbon x AltaSpring	225	65	120	15	-0.01%	571	41	0.24%	78	0	0	0	101	100	104	58						

Survival	TYPE			Heat Tolerance	Rel%	Over Type	Mam Syst	Stat	Bone Qual	Angl	Muzz Wrd	Body Dep	Ches Wrd	Pin Wrd	Pin Set	LoIn Strg	Foot Angl	Rear Set	Rear View	Uddr Txt	Udder Dep	Fore Att	Rear Alth	Rear Attw	Cent Lig	Teat Plac front	Teat Plac rear	Teat Leng	Rel	RRP	100 Unit Offer	Sexed RRP
108	55	93	38	102	104	101	102	99	97	97	96	104	100	97	95	101	97	103	106	102	103	95	104	110	102	95	61	\$24	\$20	\$52		
113	54	99	38	107	106	104	105	97	96	97	99	103	96	95	96	103	103	105	110	104	106	100	108	102	104	93	61	\$26.00 Shareholder Exclusive				
111	52	95	38	97	106	103	102	96	93	90	96	97	99	94	100	101	97	99	110	104	107	100	104	106	104	87	58	\$24		\$55		
115	52	95	38	106	109	105	106	98	92	94	92	98	101	101	100	101	106	103	112	106	109	101	104	107	105	94	58	\$36				
110	49	94	38	102	106	102	107	99	94	95	92	104	94	100	95	106	100	103	107	100	108	102	105	103	108	90	55	\$20				
109	51	99	38	101	102	106	103	96	90	94	95	99	100	100	101	105	97	103	110	99	104	95	106	102	106	97	57	\$20				
109	52	93	38	105	106	106	105	99	99	93	96	106	99	98	99	97	99	101	107	101	107	101	105	104	103	97	57	\$24		\$52		
112	53	97	38	105	104	102	100	99	103	99	102	101	102	102	92	101	102	100	106	106	102	98	103	104	103	89	59	\$18				
106	54	94	38	100	103	98	99	94	98	97	98	100	106	103	101	95	102	99	99	99	101	102	102	105	102	98	59	\$16				
106	49	97	38	102	103	106	106	101	101	98	96	99	105	103	96	104	102	105	103	98	101	103	105	102	100	99	55	\$18				
111	54	92	38	105	105	107	109	97	97	94	96	103	96	99	96	102	94	109	109	99	104	100	108	105	98	103	60	\$24				
109	51	100	38	103	105	101	105	97	96	97	96	101	95	99	95	106	97	103	106	102	106	101	103	101	103	96	58	\$20				
113	51	92	38	104	103	105	105	98	96	94	92	100	102	99	101	99	100	105	107	100	107	95	105	103	99	97	57	\$36				
111	63	100	38	107	105	102	101	94	98	95	100	105	100	98	97	102	96	102	109	106	108	97	103	101	98	94	71	\$20				
111	64	97	38	103	106	97	105	94	97	92	96	95	99	96	103	91	99	103	108	108	108	97	103	102	101	99	76	\$26	\$20	\$60		
109	54	97	38	103	103	105	101	96	97	94	98	92	103	99	106	105	103	102	106	102	103	101	102	100	100	99	59	\$16				
110	60	89	38	103	108	108	107	98	98	94	95	97	103	97	105	101	105	105	105	103	105	106	105	105	102	94	66	\$20		\$45		
111	55	95	38	103	106	101	107	98	102	94	96	97	98	96	100	96	99	103	105	104	110	101	104	98	105	103	61	\$22				
112	51	95	38	105	108	104	102	98	92	96	98	98	100	101	99	101	102	104	106	100	106	105	107	106	108	96	57	\$20				
109	54	94	38	100	103	107	100	96	96	98	100	91	104	100	99	103	102	98	102	101	106	98	102	104	105	94	59	\$18				
112	50	93	38	105	106	100	98	97	103	96	100	97	93	99	101	99	100	97	110	107	109	97	103	104	101	98	55	\$20				
110	75	102	38	102	101	99	97	99	95	98	101	97	103	100	95	99	101	100	106	107	101	99	95	99	94	102	82	\$24	\$20	\$55		
111	59	93	38	105	108	101	105	100	101	98	100	94	95	96	100	99	104	103	108	109	110	100	103	102	98	98	65	\$24	\$20			
110	48	98	38	104	107	100	105	97	94	94	98	97	98	93	98	102	96	100	108	103	108	104	102	105	95	98	53	\$18				
110	55	94	38	103	101	104	100	97	102	99	102	106	101	98	94	103	100	100	105	101	100	102	102	99	101	97	61	\$16				
110	57	95	38	97	104	105	108	94	92	88	91	97	100	98	104	95	102	106	107	101	102	97	106	106	103	93	62	\$28		\$55		
109	49	99	38	101	103	105	105	98	99	94	100	103	99	95	93	103	97	101	106	99	104	97	105	106	103	95	54	\$20				
110	61	93	38	105	107	102	100	102	103	102	106	100	97	97	101	102	104	101	103	101	102	108	103	108	106	90	67	\$20				
111	49	93	38	101	104	101	105	97	96	92	96	94	98	99	100	103	97	100	106	103	110	99	105	95	106	99	56	\$26				
109	70	94	38	105	103	97	101	98	96	96	97	102	104	96	101	97	100	97	107	106	105	96	101	103	91	96	79	\$24				
111	50	95	38	102	109	102	110	97	98	92	95	99	101	97	97	99	100	105	109	105	111	100	107	103	108	95	57	\$25		\$60		
111	50	90	38	109	112	109	106	100	94	94	95	104	92	97	96	100	100	112	110	104	109	104	112	107	100	105	57	\$26	\$20			
111	54	92	38	106	107	107	109	101	95	94	94	103	100	96	100	104	103	103	110	105	108	98	103	107	103	99	61	\$24	\$20			
108	49	99	38	103	106	105	106	98	96	95	100	106	98	97	96	107	98	104	106	102	104	100	107	105	103	95	55	\$20				
113	60	107	38	108	110	108	113	101	93	96	93	104	107	101	98	98	94	107	113	108	111	98	106	109	100	95	67	\$20		\$55		
112	53	92	38	103	101	104	103	98	99	91	100	102	107	101	100	97	101	103	107	99	105	98	102	99	99	96	58	\$26				
111	49	96	38	107	106	106	104	98	99	94	100	106	98	104	102	101	101	102	109	102	107	97	103	110	102	101	55	\$20				
111	50	96	38	103	106	104	104	96	102	96	97	99	97	98	98	99	104	103	106	105	105	102	104	101	99	100	57	\$22		\$55		
110	58	95	38	105	105	101	102	100	102	101	103	103	96	98	99	102	103	100	107	103	108	101	104	100	101	94	63	\$32		\$65		
112	49	97	38	106	108	110	106	104	103	98	98	102	101	104	101	102	100	101	107	102	103	105	107	109	109	95	55	\$20				
110	49	93	38	103	106	103	111	98	92	93	88	96	100	98	103	97	101	99	112	107	110	98	101	103	101	97	55	\$22				
110	60	92	38	104	102	99	104	99	96	93	94	98	102	100	104	94	103	101	108	101	104	93	99	109	94	100	70	\$22				
111	54	91	38	104	107	99	103	97	98	95	96	95	96	94	102	93	105	100	108	104	110	97	106	104	101	101	60	\$18				
109	75	95	38	110	110	106	106	104	101	100	97	104	88	95	104	96	113	102	109	111	108	100	107	105	104	105	82	\$24				
111	51	99	38	107	108	101	106	102	99	104	104	98	97	101	99	98	105	99	109	107	112	100	101	103	99	97	56	\$16				
111	50	90	38	104	107	103	110	100	93	94	94	99	93	95	96	100	104	104	109	103	110	101	105	103	102	95	56	\$22				
110	55	95	38	103	108	102	105	95	95	94	98	103	96	91	99	99	99	102	107	104	112	100	108	101	104	94	60	\$28				
109	77	93	38	100	101	103	106	98	88	90	89	98	102	102	95	111	99	104	107	101	105	95	100	102	100	100	87	\$20		\$60		
111	52	99	38	104	111	104	106	98	97	95	97	102	97	99	93	103	105	105	110	106	108	102	108	109	109	94	58	\$32				
110	54	100	38	100	105	100	106	97	98	92	94	97	99	94	99	100	101	101	109	105	105	96	103	107	103	96	60	\$28				
109	52	94	38	100	103	100	108	97	95	93	92	94	99	99	98	104	102	101	106	101	107	100	99	102	102	98	59	\$22				
111	63	101	38	106	108	109	108	105	94	100	96	103	105	101	93	108	100	106	101	101	105	103	113	104	106	92</						

*Prices are exclusive of GST and are effective from the 10th August 2019 and are subject to change without notice.

Cloud Based, Multimetric Smart Collar

HEALTH > Rumination > Resting > Feeding
REPRODUCTION > Estrus Activity > Mounting > Chin Resting

- Accurate timely alerts via desktop, tablet or smartphone
- 24/7 technical support
- Automatic software updates
- Remote off farm heifer monitoring
- Push notifications & text messages
- Long range capabilities
- Remote gateway for off farm & heifer management

Insights

Year Round Reproductive and Health Monitoring at your fingertips

"HerdInsights gives me the ability to step back and get away from the farm because I have full confidence in the system"

Graeme Cope, 750 monitors - Fish Creek VIC

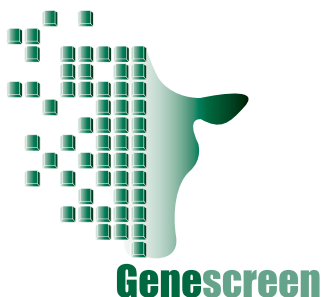


For more information, please contact a Genetics Australia Representative, or call 1800 039 047

Freecall: 1800 039 047

www.genaust.com.au

Genetics AUSTRALIA
Breeding better Australian herds



UNLOCK YOUR HERDS GENETIC POTENTIAL



Genetics AUSTRALIA
Breeding better Australian herds

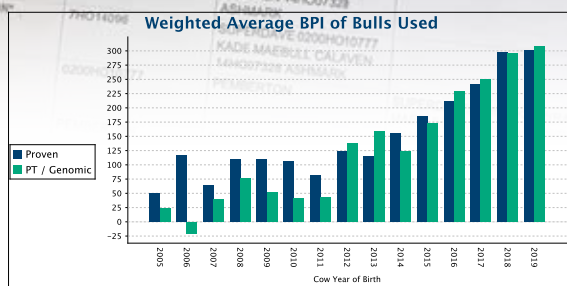
SUGGESTION REPORT

Cow	B Suggested	2nd Suggested	Other Suggested	Exclusions
2953	F 0200HO10777*	7HO14096		MAEBULL(Liq) 14HO07328(Liq)
2855	F 7HO14096#	14HO07328#	SUPERDAVE PEMBERTON KADE CALAVEN ASHMARK	SUPERDAVE(Mix Ang) 0200HO10777(Mix Ang) PEMBERTON(Mix Ang) KADE(Mix Ang) MAEBULL(Ang Lij) CALAVEN(Mix Like Ang) 14HO07328(Liq) 7HO14096(Ang) ASHMARK(Mix Ang)
3028	F SUPERDAVE*	MAEBULL		
3032	F 14HO07328*	CALAVEN	0200HO10777 PEMBERTON KADE CALAVEN 14HO07328 7HO14096 ASHMARK	
3053	F KADE*	7HO14096	SUPERDAVE 0200HO10777 PEMBERTON KADE MAEBULL 7HO14096 ASHMARK	
3060	F 7HO14096#	PEMBERTON#	SUPERDAVE 0200HO10777 PEMBERTON MAEBULL 14HO07328 ASHMARK	CALAVEN(Like)
3063	F MAEBULL	MAEBULL	KADE	SUPERDAVE(Fang RSeC) 0200HO10777(Fang FAS RSeC) PEMBERTON(Fang) KADE(Fang RSeC) MAEBULL(Liq F Ang) CALAVEN(Fang RSeC) 14HO07328(Liq F Ang) 7HO14096(F Ang) ASHMARK(Fang FAS RSeC)
3085	F ASHMARK#	7HO14096#		SUPERDAVE(LoinS) 0200HO10777(LoinS) PEMBERTON(LoinS) CALAVEN(LoinS) 14HO07328(LoinS) 7HO14096(LoinS) ASHMARK(LoinS)
3128	F 7HO14096*	KADE	SUPERDAVE(Fang) 0200HO10777(Fang) PEMBERTON(Fang) KADE(Fang) MAEBULL(Fang) CALAVEN(Fang) 14HO07328(Fang) 7HO14096(Fang) ASHMARK(Fang)	
3139	F PEMBERTON*			

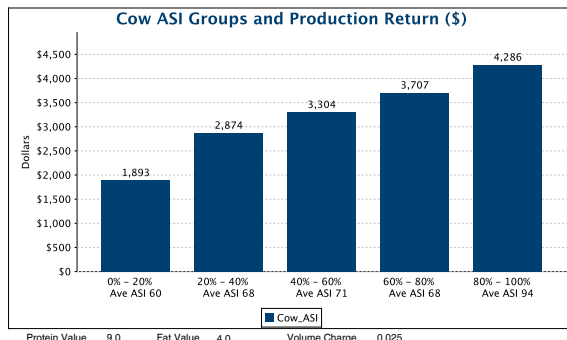
Genescreen is your complete genetic analysis package.

It provides you with individual cow mating suggestions based on either pedigree estimates or genomic breeding values. Track your herds performance through the Genescreen benchmarking module. Genescreen gives you the ability to analyse and understand where your breeding program is taking you.

To order a FREE Genescreen, contact your local Genetics Australia representative or email genescreen@genaustr.com.au



Year	2005	2006	2007	2008	2009	2010	2011	2012	2013	2014	2015	2016	2017	2018	2019
PT / Genomic	24	21	39	77	51	41	43	138	158	124	173	229	250	295	308
Proven	20	110	64	110	109	106	81	123	115	106	185	212	242	297	301



The Solution to increase your profitability

Low Birth Weight

Excellent Growth Rates

Calving Ease

High Quality Semen

DairyBEEFX

Profitable Sires

Short Gestation Length

ANGUS

SPECKLE PARK

CHAROLAIS

MURRAY GREY

HEREFORD

WAGYU

SIMMENTAL



ABVS Jersey Breeding Values / August 2019

PRODUCTION																													
Name	Nasis	A2 Status	Pedigree	BPI	rel	ASI	Protein (kg)	Protein %	Milk (L)	Fat (kg)	Fat %	Rel %	Daughters	Herds	RIP %	O type	Mammary	Rel %	Milk Speed	Temp	Likeability	Rel %	Cell Count	Rel %	Dr Fertility	Rel %	RPP	100 Unit Offer	Sexed RRP
DOUGGAN	12JJP26	A22	David x Mummur	276	63	199	26	0.36%	275	26	0.21%	73	0	0	0	98	102	54	102	102	105	61	145	66	102	54	\$24.00	\$20.00	\$50.00
BAZYLI	12JJR21	A11	David x Navara	263	66	159	11	0.46%	-302	30	0.87%	76	0	0	0	106	105	57	104	105	107	63	114	69	103	55	\$22.00		
DOBSON	12JJP25	A12	David x Elton	252	63	191	24	0.32%	254	30	0.31%	73	0	0	0	103	103	53	102	103	105	60	115	66	100	53	\$20.00		
ARDENT	12JJR23	A12	David x Spiritual	245	65	172	20	0.28%	193	31	0.40%	75	0	0	0	106	107	57	102	105	106	62	120	68	99	55	\$18.00		
IMRFERTILITY	12JJP29	A22	Levigenes x Valerian	232	63	132	12	0.44%	-248	14	0.51%	75	0	0	0	101	100	49	100	101	102	61	121	67	109	48	\$20.00		
VALENBLAST	12JUN16	A22	Valentino x Sandblast	228	67	135	15	0.29%	55	19	0.31%	76	0	0	0	106	111	60	103	105	106	65	132	71	99	59	\$20.00		
MANLY	12JJP27	A22	Glenferrie x Valentino	213	60	150	18	0.24%	188	26	0.30%	70	0	0	0	106	107	49	103	103	105	56	116	63	97	47	\$16.00		
LOKI	12JJP28	A22	Terrific x Navarian	211	61	150	18	0.40%	-31	14	0.30%	73	0	0	0	102	104	48	102	102	104	57	103	66	102	51	\$18.00		
VALIN	12JUN03	A22	Valentino x Navara	202	68	94	6	0.24%	-134	20	0.52%	77	33	15	84	114	114	65	103	105	106	67	134	67	97	59	\$20.00		\$50.00
INVINCIBLE	12JUN20	A22	Hatman x Valentino	200	66	124	11	0.32%	-118	21	0.52%	76	0	0	0	110	113	59	104	105	107	65	110	70	98	55	\$18.00		
ALGERNON	12JUN09	A22	Navarian x Raceway	199	66	187	23	0.48%	23	17	0.30%	76	0	0	0	101	104	58	102	101	105	64	90	70	101	56	\$20.00		
IRWIN 7J1163	80JJG40	A22	Valentino x latola	192	90	71	11	0.00%	332	15	-0.06%	98	342	59	14	111	111	92	103	105	106	93	152	94	97	90	\$26.00		
ASKN	12JJK13	A22	Valentino x Tbone	189	71	116	15	0.30%	22	9	0.14%	80	14	1	21	111	114	69	100	104	106	69	119	72	98	64	\$22.00	\$20.00	\$50.00
HIPWOOD P	12JJR20	A22	Oliver P x Brax	186	62	105	14	0.07%	333	21	0.06%	73	0	0	0	108	110	52	103	104	106	56	105	66	101	49	\$18.00		
VALENTINO 7J1038	80JJF12	A22	Louie x Paramount	181	92	69	14	-0.10%	558	15	-0.29%	99	1792	179	18	114	115	98	103	107	108	98	136	99	97	97	\$24.00	\$20.00	
POLLEDGOLD PP	12JJR22	A22	Oliver P x Vanahlem	170	63	99	16	0.14%	273	10	-0.08%	74	0	0	0	110	112	54	101	105	106	57	112	67	98	53	\$18.00		
GRANT (6) 14JE00754	80JJM37	A22	Volcano x Galvanize	167	61	93	9	0.20%	4	16	0.30%	71	0	0	0	107	104	51	101	104	104	57	137	64	99	50	\$22.00		
VOYAGEDALE	12JJJ04	A12	Vanahlem x Valerian	152	83	139	27	0.10%	663	10	-0.49%	95	120	44	18	101	101	74	100	101	101	85	121	84	98	75	\$16.00		
AUSSIEGOLD P	12JJH05	A22	Elton x Vanahlem	144	90	88	8	0.27%	-124	10	0.32%	99	543	114	27	109	106	91	101	103	104	95	136	95	98	89	\$24.00	\$20.00	\$50.00
TAHBILK	12JJJ08	A22	Vanahlem x Navara	136	85	134	12	0.43%	-235	16	0.54%	96	168	47	17	109	108	82	105	106	107	88	95	87	91	77	\$24.00		\$48.00
AINSBLEY	12JJM07	A22	Brax x Konui	132	64	109	17	0.21%	206	8	-0.07%	75	15	1	100	105	105	54	103	106	106	64	102	67	98	51	\$16.00		
OLIVER P 7J1219	80JJH22	A22	Valentino x Mik P	131	78	22	6	-0.20%	463	13	-0.22%	88	52	10	59	113	113	75	102	105	106	66	121	86	100	80	\$24.00	\$20.00	\$50.00

TYPE	Over Type																												
	Bull ID	Mam Syst	Stat	Bone Qual	Angl	Muzz Wid	Body Dep	Ches Wid	Pin Wid	Pin Set	LoIn Strg	Foot Angl	Rear Set	Rear View	Udder Dep	Fore Att	Rear Arth	Rear Attiv	Cent Lig	F Teat Place	R Teat Place	Teat Leng	Rel	Survival	Survival rel	Feed Saved	Rel	Heat Tol	Rel
DOUGGAN	98	102	100	97	97	100	101	104	99	102	102	100	96	100	101	102	102	98	100	102	103	95	54	108	51	-22	26	90	38
	106	105	102	99	101	97	97	97	101	103	100	101	96	102	103	105	102	100	103	106	108	95	57	110	53	7	27	97	38
	103	103	101	99	102	103	98	102	100	107	107	101	99	102	102	103	101	102	103	104	98	53	110	50	-9	25	94	38	
	106	107	105	98	102	106	98	102	100	105	105	103	98	104	102	103	106	103	107	103	106	98	57	110	53	-62	27	97	38
IMFERTILITY	101	100	99	99	96	98	97	103	98	102	99	104	98	100	104	100	102	96	99	105	103	102	49	108	46	9	24	97	38
	106	111	104	96	103	104	100	100	110	106	107	101	99	100	99	102	108	112	105	107	103	96	60	108	57	-47	28	96	38
VALENBLAST	106	107	103	102	104	106	98	102	104	109	108	103	98	97	99	99	101	106	107	108	110	99	49	110	47	-37	24	92	38
MANLY	106	107	103	102	104	106	98	102	104	109	108	103	98	97	99	99	101	106	107	108	110	99	49	110	47	-37	24	92	38
LOKI	102	104	93	89	93	102	101	106	104	102	99	94	98	99	99	103	104	100	103	102	105	104	48	107	45	55	24	94	38
VALIN	114	114	107	109	104	103	104	101	105	108	105	103	99	93	102	107	109	112	106	108	108	95	65	111	59	-117	31	92	38
INVINCIBLE	110	113	104	102	109	110	107	105	106	103	107	103	98	106	101	104	110	110	107	109	108	95	59	108	54	-108	28	91	38
ALGERNON	101	104	101	96	101	101	101	105	100	102	98	97	102	94	95	98	104	104	102	103	105	103	58	108	52	-38	27	93	38
IRWIN 7J1163	111	111	105	102	105	106	96	100	96	104	105	101	97	102	108	109	110	109	102	104	99	96	92	112	85	-44	43	95	38
ASKN	111	114	106	104	106	105	101	100	108	105	108	106	96	102	104	107	105	110	110	110	111	93	69	113	63	-78	32	94	38
HIPWOOD P	108	110	105	105	104	100	100	100	102	103	102	102	99	104	105	102	111	110	104	102	103	95	52	109	47	-58	25	96	38
VALENTINO 7J1038	114	115	108	103	109	109	100	104	107	105	106	107	94	102	104	107	110	116	105	106	107	94	98	113	95	-119	45	91	38
POLLEDGOLD PP	110	112	105	100	107	105	104	106	105	107	111	104	96	103	101	109	111	108	103	106	102	98	54	109	50	-106	26	93	38
GRANT (6) 14JE00754	107	104	105	101	103	104	98	100	101	102	105	104	95	102	104	105	99	101	101	105	101	102	51	109	47	-47	24	97	38
VOYAGEDALE	101	101	97	96	103	98	101	96	89	92	93	104	97	106	100	93	102	102	104	102	105	98	74	102	70	51	35	94	38
AUSSIEGOLD P	109	106	103	93	107	111	113	114	106	106	112	96	102	97	99	106	105	103	101	103	97	107	91	106	86	-175	43	93	38
TAHBILK	109	108	108	99	106	103	105	108	113	111	108	102	100	108	95	104	101	107	101	111	111	97	82	104	75	-162	39	94	38
AINSBLEY	105	105	105	98	101	102	108	103	105	95	98	94	100	100	100	104	105	107	100	98	96	97	54	104	50	-115	26	93	38
OLIVER P 7J1219	113	113	104	105	106	99	98	103	103	107	106	107	96	102	105	107	113	110	105	103	103	96	75	110	67	-57	36	96	38

*Prices are exclusive of GST and are effective from the 10th August 2019 and are subject to change without notice.

SAVE UP TO \$600!

THE BEST OF OUR PREMIUM BULL TEAM FOR JUST \$20

ASKN

DOUGGAN

VALENTINO

AUSSIEGOLD P

OLIVER P



Order 100+ units of any combination for \$20 RRP*

* Order 100+ units of any combination of selected bull for \$20 a unit. Offer is subject to semen availability and prices are quoted exclusive of GST. Orders can be placed by contacting your Genetics Australia representative or your local reseller and can be used in conjunction with our 6 Holsteins. Offer is valid from the 16th August until the 1st December 2019.

PROFIT LEADERS

Who isn't not thinking about profitability these days?

The BPI provides you with the best genetic estimate of profit available by combining a specific set of traits that reflect farmer needs and economic farm modelling. You can use the BPI to confidently select the most profitable genetics for your herd. BPI is the primary focus of the Genetics Australia breeding program. If profit is important to you, the BPI should be high on your selection criteria list as well.

White Star Douglas

DOUGGAN

David x Murmur

A22

BPI	276	ASI	199	Overall Type	98	Mam System	102
Cell Count	145	Daughter Fert	102	Survival	108		



Douggan

- Number One Jersey sire in Australia
- A22, Positive Milk Flow and great components
- Great Cell Count with Positive Daughter Fertility

Kaarmona Bazyli

BAZYLI

David x Navara

A11

BPI	263	ASI	159	Overall Type	106	Mam System	105
Cell Count	114	Daughter Fert	103	Survival	110		



Bazyli family member, Kaarmona Flowerpower Babe 5

- High Profit with amazing components
- Correct Feet, Legs and Rumps
- Superior Survival and Positive Daughter Fertility

Leading BPI Sires

Name	Full Name	A2 Status	Pedigree	BPI	ASI	Overall Type	Mam System	Cell Count	Dtr Fertility	Survival	RRP
DOUGGAN	White Star Douglas	A22	David x Murmur	276	199	98	102	145	102	108	\$24.00
BAZYLI	Kaarmona Bazyli	A11	David x Navara	263	159	106	105	114	103	110	\$22.00
DOBSON	White Star Doorman	A12	David x Elton	252	191	103	103	115	100	110	\$20.00
ARDENT	Bercar Ardent	A12	David x Spiritual	245	172	106	107	120	99	110	\$18.00
MR FERTILITY	Beulah Mr Fertility	A22	Levigenes x Valerian	232	132	101	100	121	109	108	\$20.00
VALENBLAST	White Star Valenblast	A22	Valentino x Sandblast	228	135	106	111	132	99	108	\$20.00
MANLY	Broadlin 179 Glenferrie-ET	A22	Glenferrie x Valentino	213	150	106	107	116	97	110	\$16.00
LOKI	Kaarmona Loki	A22	Terrific x Navarian	211	150	102	104	103	102	107	\$18.00
VALIN	Kings View Valin 4697	A22	Valentino x Navara	202	94	114	114	134	97	111	\$20.00
INVINCIBLE	Loxleigh Hatman Vince 5963	A22	Hatman x Valentino	200	124	110	113	110	98	108	\$18.00

FERTILITY LEADERS

Leading Daughter Fertility

Name	Full Name	A2 Status	Pedigree	BPI	Dtr Fertility	ASI	Overall Type	Cell Count	Survival	RRP
MRFERTILITY	Beulah Mr Fertility	A22	<i>Levigenes x Valerian</i>	232	109	132	101	121	108	\$20.00
BAZYLI	Kaarmona Bazyli	A11	<i>David x Navara</i>	263	103	159	106	114	110	\$22.00
DOUGGAN	White Star Douglas	A22	<i>David x Murmur</i>	276	102	199	98	145	108	\$24.00
LOKI	Kaarmona Loki	A22	<i>Terrific x Navarian</i>	211	102	150	102	103	107	\$18.00
ALGERNON	Broadlin Hilux	A22	<i>Navarian x Raceway</i>	199	101	187	101	90	108	\$20.00
HIPWOOD P	Beulah Hipwood	A22	<i>Oliver P x Brax</i>	186	101	105	108	105	109	\$18.00
DOBSON	White Star Doorman	A12	<i>David x Elton</i>	252	100	191	103	115	110	\$20.00
OLIVER P 7J1219	Dutch Hollow Oliver P	A22	<i>Valentino x Mik P</i>	131	100	22	113	121	110	\$24.00
GRIFF	Kaarmona Griffin	A12	<i>Navarian x Vanahlem</i>	131	100	118	104	83	107	\$16.00
CASPIAN	Bushlea Rv Casual-ET	A12	<i>Axis x Legion</i>	74	100	4	107	137	109	\$16.00

Beulah Mr Fertility

MRFERTILITY

Levigenes x Valerian

A22

BPI	232	ASI	132	Overall Type	101	Calving Ease	109
Cell Count	121	Daughter Fert	109	Survival	108		



MrFertility Sire, Levigenes

- “What it says on the can.” – Number one active Fertility Sire
- Excellent Survival
- A22 with positive components

Brookbora Valentino Askn

ASKN

Valentino x Tbone

A22

BPI	189	ASI	116	Overall Type	111	Semen Fert	5.66
Cell Count	119	Daughter Fert	98	Survival	113		



Askn Daughter, Brookbora Standard Lady 306

- +5.66% Semen Fertility!
- Outstanding “No-holes” Type Proof
- First daughters entering production now!

Leading Semen Fertility

Name	Full Name	A2 Status	Pedigree	BPI	Semen Fert	ASI	Overall Type	Cell Count	Dtr Fertility	Survival	RRP
ASKN	Brookbora Valentino Askn	A22	<i>Valentino x Tbone</i>	189	5.66%	116	111	119	98	113	\$22.00
AUSSIEGOLD P	Broadlin Aussiegold P-ET	A22	<i>Elton x Vanahlem</i>	144	2.36%	88	109	136	98	106	\$24.00
OLIVER P 7J1219	Dutch Hollow Oliver P	A22	<i>Valentino x Mik P</i>	131	1.27%	22	113	121	100	110	\$24.00
GRANT {6} 14JE00754	Jx Crescent Volcano Grant {6}	A22	<i>Volcano x Galvanize</i>	167	0.93%	93	107	137	99	109	\$22.00
GRIFF	Kaarmona Griffin	A12	<i>Navarian x Vanahlem</i>	131	0.88%	118	104	83	100	107	\$16.00
VALENBLAST	White Star Valenblast	A22	<i>Valentino x Sandblast</i>	228	0.73%	135	106	132	99	108	\$20.00
TAHBILK	Beulah Tahbilk	A22	<i>Vanahlem x Navara</i>	136	0.64%	134	109	95	91	104	\$20.00
SOLAR PP 7JE01499	Kash-In Solar PP-ET	A12	<i>Nikon P x Dimension</i>	128	0.49%	101	105	124	99	107	\$24.00
LOKI	Kaarmona Loki	A22	<i>Terrific x Navarian</i>	211	0.41%	150	102	103	102	107	\$18.00
DOBSON	White Star Doorman	A12	<i>David x Elton</i>	252	0.38%	191	103	115	100	110	\$20.00
DOUGGAN	White Star Douglas	A22	<i>David x Murmur</i>	276	0.30%	199	98	145	102	108	\$24.00

PRODUCTION

The aim of the game is efficient milk production.

The ASI is the perfect tool to drive efficient production by enhancing yields of protein and fat while improving protein and fat percentages. While the protein to fat payment ratio may change from time to time, the imperative to produce as much protein and fat never changes. To improve the production of your herd, select high ASI sires.

Broadlin Hilux

ALGERNON

Navarian x Raceway

A22

BPI	199	ASI	187	Overall Type	101	Protein (kg)	23
-----	-----	-----	-----	--------------	-----	--------------	----

Milk (L)	23	Daughter Fert	101	Fat (kg)	17
----------	----	---------------	-----	----------	----



Algernon Dam, Broadlin Vanessa 2950

- Profitable Milk Production with great Protein
- A22 with Positive Daughter Fertility
- Longer Teats

Wallacedale Mels Voyage

VOYAGEDALE

Vanahlem x Valerian

A12

BPI	152	ASI	139	Overall Type	101	Protein (kg)	27
-----	-----	-----	-----	--------------	-----	--------------	----

Milk (L)	663	Daughter Fert	98	Fat (kg)	10
----------	-----	---------------	----	----------	----



Voyagedale Daughter, 4749

- Super Milk Flow
- High Protein at +27kgs
- Reliable Breeding Value with 120 daughters

Leading Production Sires

Name	Full Name	A2 Status	Pedigree	BPI	ASI	Protein (kg)	Milk (L)	Fat (kg)	Overall Type	Dtr Fertility	RRP
DOUGGAN	White Star Douglas	A22	David x Murmur	276	199	26	275	26	98	102	\$24.00
DOBSON	White Star Doorman	A12	David x Elton	252	191	24	254	30	103	100	\$20.00
ALGERNON	Broadlin Hilux	A22	Navarian x Raceway	199	187	23	23	17	101	101	\$20.00
ARDENT	Bercar Ardent	A12	David x Spiritual	245	172	20	193	31	106	99	\$18.00
BAZYLI	Kaarmona Bazyli	A11	David x Navara	263	159	11	-302	30	106	103	\$22.00
MANLY	Broadlin 179 Glenferrie-ET	A22	Glenferrie x Valentino	213	150	18	188	26	106	97	\$16.00
LOKI	Kaarmona Loki	A22	Terrific x Navarian	211	150	18	-31	14	102	102	\$18.00
VOYAGEDALE	Wallacedale Mels Voyage	A12	Vanahlem x Valerian	152	139	27	663	10	101	98	\$16.00
VALENBLAST	White Star Valenblast	A22	Valentino x Sandblast	228	135	15	55	19	106	99	\$20.00
TAHBILK	Beulah Tahbilk	A22	Vanahlem x Navara	136	134	12	-235	16	109	91	\$20.00

TYPE

Correct conformation is a vital part of breeding long lasting, problem free cows, and problem free cows give you time to focus on other aspects of your business.

The breed society classifiers score the cows for DataGene for the kind of cow that makes you money for multiple lactations. Functional udders, correct rumps, sound feet & legs and a balance of strength and femininity combine to deliver a profitable cow. Your herd will always be one of your biggest assets.

Kings View Valin 4697

VALIN

Valentino x Navara

A22

BPI 202 **Body Depth** 104 **Overall Type** 114 **Mam System** 114

Pin Set 108 **Heal Depth** 103 **Udder Depth** 102



Valin Daughter, Kings View Aileen 181

- A22 sire with Amazing Udder ratings
- Great Survival and Cell Count numbers
- Nice Frames and Correct Rumps

All Lynns Louie Valentino

7J1038

VALENTINO

Louie x Paramount

A22

BPI 181 **Body Depth** 100 **Overall Type** 117 **Mam System** 115

Pin Set 105 **Heal Depth** 107 **Udder Depth** 104



Valentino Daughter, Brookbora Valentino Fair Mavis

- The Dominant Jersey Sire of the last decade
- Daughters that Show and Work
- Mr Reliability and A22!

Leading Type Sires

Name	Full Name	A2 Status	Pedigree	BPI	Overall Type	Mam System	Body Depth	Pin Set	Heal Depth	Udder Depth	RRP
VALIN	Kings View Valin 4697	A22	Valentino x Navara	202	114	114	104	108	103	102	\$20.00
VALENTINO 7J1038	All Lynns Louie Valentino	A22	Louie x Paramount	181	114	115	100	105	107	104	\$24.00
OLIVER P 7J1219	Dutch Hollow Oliver P	A22	Valentino x Mik P	131	113	113	98	107	107	105	\$24.00
ASKN	Brookbora Valentino Askn	A22	Valentino x Tbone	189	111	114	101	105	106	104	\$22.00
IRWIN 7J1163	All Lynns Valentino Irwin-ET	A22	Valentino x latola	192	111	111	96	104	101	108	\$26.00
INVINCIBLE	Loxleigh Hatman Vince 5963	A22	Hatman x Valentino	200	110	113	107	103	103	101	\$18.00
POLLEDGOLD PP	Broadlin 565 Oliver 3 P	A22	Oliver P x Vanahlem	170	110	112	104	107	104	101	\$18.00
AXIS 7JE01274	Sugar Grove Valentino Axis	A22	Valentino x Restore	98	110	107	101	108	107	104	\$20.00
TAHBILK	Beulah Tahbilk	A22	Vanahlem x Navara	136	109	108	105	111	102	95	\$20.00
AUSSIEGOLD P	Broadlin Aussiegold P-ET	A22	Elton x Vanahlem	144	109	106	113	106	96	99	\$24.00
HIPWOOD P	Beulah Hipwood P	A22	Oliver P X Brax	186	108	110	100	103	102	105	\$18.00
CASPIAN	Jx Crescent Volcano Grant {6}	A12	Axis x Legion	74	107	108	103	103	104	106	\$22.00

A22

The popularity of A22 sires is on the rise.

Consumers are looking for natural solutions for health problems and are turning to A22 milk. Selection for A22 milk is simple: consistent use of exclusive A22 sires will deliver an A22 herd within several generations. To fast track this you can test your herd for A22 gene. Contact Genetics Australia if you are interested in testing your herd for A22.

Loxleigh Hatman Vince 5963

INVINCIBLE

Hatman x Valentino

A22

BPI 200 **ASI** 124 **Overall Type** 110 **Mam System** 113

Cell Count 110 **Daughter Fert** 98 **Survival** 108



Invincible Dam, Loxleigh Valentino Vanessa 5408

- A22 Total Performance Sire
- Adds strength and capacity
- Amazing Workability and Survival ratings

Kaarmona Loki

LOKI

Terrific x Navarian

A22

BPI 211 **ASI** 150 **Overall Type** 102 **Mam System** 104

Cell Count 103 **Daughter Fert** 102 **Survival** 107



Loki

- A22 sire with a different pedigree
- Wide Chests and Correct Rumps
- Longer Teats and Positive Daughter Fertility

A22 Sires

Name	Full Name	A2 Status	Pedigree	BPI	ASI	Overall Type	Mam System	Cell Count	Dtr Fertility	Survival	RRP
DOUGGAN	White Star Douglas	A22	David x Murrur	276	199	98	102	145	102	108	\$24.00
MRFERTILITY	Beulah Mr Fertility	A22	Levigenes x Valerian	232	132	101	100	121	109	108	\$20.00
VALENBLAST	White Star Valenblast	A22	Valentino x Sandblast	228	135	106	111	132	99	108	\$20.00
MANLY	Broadlin 179 Glenferrie-ET	A22	Glenferrie x Valentino	213	150	106	107	116	97	110	\$16.00
LOKI	Kaarmona Loki	A22	Terrific x Navarian	211	150	102	104	103	102	107	\$18.00
VALIN	Kings View Valin 4697	A22	Valentino x Navara	202	94	114	114	134	97	111	\$20.00
INVINCIBLE	Loxleigh Hatman Vince 5963	A22	Hatman x Valentino	200	124	110	113	110	98	108	\$18.00
ALGERNON	Broadlin Hilux	A22	Navarian x Raceway	199	187	101	104	90	101	108	\$20.00
IRWIN 7J1163	All Lynns Valentino Irwin-ET	A22	Valentino x latola	192	71	111	111	152	97	112	\$26.00
ASKN	Brookbora Valentino Askn	A22	Valentino x Tbone	189	116	111	114	119	98	113	\$22.00
HIPWOOD P	Beulah Hipwood P	A22	Oliver P x Brax	186	105	108	110	105	101	109	\$18.00
VALENTINO 7J1038	All Lynns Louie Valentino	A22	Louie x Paramount	181	69	114	115	136	97	113	\$24.00
POLLEDGOLD PP	Broadlin 565 Oliver 3 P	A22	Oliver P x Vanahlem	170	99	110	112	112	98	109	\$18.00
GRANT {6} 14JE00754	Jx Crescent Volcano Grant {6}	A22	Volcano x Galvanize	167	93	107	104	137	99	109	\$22.00
AUSSIEGOLD P	Broadlin Aussiegold P-ET	A22	Elton x Vanahlem	144	88	109	106	136	98	106	\$24.00
TAHBILK	Beulah Tahbilk	A22	Vanahlem x Navara	136	134	109	108	95	91	104	\$20.00
AINSLEY	Beulah Brax KP 4411	A22	Brax x Konui	132	109	105	105	102	98	104	\$16.00
OLIVER P 7J1219	Dutch Hollow Oliver P	A22	Valentino x Mik P	131	22	113	113	121	100	110	\$24.00
AXIS 7JE01274	Sugar Grove Valentino Axis	A22	Valentino x Restore	98	65	110	107	146	92	112	\$20.00

MASTITIS RESISTANCE

Mastitis is the biggest health cost on a dairy farm through lost production and the cost of treating the infection.

By focusing on a group of type traits combined with Somatic Cell Count, you can improve your herd's mastitis resistance. Udders that are shallow and supported by a strong ligament with correct teat placement are more resistant to mastitis. Cows with correct legs and good locomotion are less likely to damage their udders as they walk long distances.

Broadlin Aussiegold P-ET

AUSSIEGOLD P

Elton x Vanahlem

A22

BPI 144 **Rear Leg Rear View** 97 **Udder Depth** 99 **Mam System** 106

Cell Count 136 **Ligament** 101 **Front Teat Placement** 103



Aussiegold Daughter, Colnarco Impulse 12th

- Reliable Cell Count improver
- Polled and A22
- First choice for strong, robust daughters

White Star Valenblast

VALENBLAST

Valentino x Sandblast

A22

BPI 228 **Rear Leg Rear View** 100 **Udder Depth** 99 **Mam System** 111

Cell Count 132 **Ligament** 105 **Front Teat Placement** 107



Valenblast

- Wide Rumps and Rear Udders
- A22 with Positive Components
- Outstanding Workabilities and Survival

Cell Count Improving Sires

Name	Full Name	A2 Status	Pedigree	BPI	Cell Count	Mam System	Rear Leg Rear View	Udder Depth	Ligament	Front Teat Placement	RRP
SUIT {6} 7JE01707	Jx Kash-In Disco Suit {6}-ET	A12	Disco x Harris	150	160	97	103	105	98	101	\$22.00
IRWIN 7J1163	All Lynns Valentino Irwin-ET	A22	Valentino x latola	192	152	111	102	108	102	104	\$26.00
AXIS 7JE01274	Sugar Grove Valentino Axis	A22	Valentino x Restore	98	146	107	103	104	100	98	\$20.00
DOUGGAN	White Star Douglas	A22	David x Murmur	276	145	102	100	101	100	102	\$24.00
CASPIAN	Bushlea Rv Casual-ET	A12	Axis x Legion	74	137	108	100	106	103	103	\$16.00
GRANT {6} 14JE00754	Jx Crescent Volcano Grant {6}	A22	Volcano x Galvanize	167	137	104	102	104	101	105	\$22.00
VALENTINO 7J1038	All Lynns Louie Valentino	A22	Louie x Paramount	181	136	115	102	104	105	106	\$24.00
AUSSIEGOLD P	Broadlin Aussiegold P-ET	A22	Elton x Vanahlem	144	136	106	97	99	101	103	\$24.00
VALIN	Kings View Valin 4697	A22	Valentino x Navara	202	134	114	93	102	106	108	\$20.00
VALENBLAST	White Star Valenblast	A22	Valentino x Sandblast	228	132	111	100	99	105	107	\$20.00
SOLAR PP 7JE01499	Kash-In Solar PP-ET	A12	Nikon P x Dimension	128	124	100	103	109	102	98	\$24.00
MRFERTILITY	Wallacedale Mels Voyage	A22	Levigenes x Valerian	232	121	100	100	104	99	105	\$20.00
VOYAGEDALE	Beulah Mr Fertility	A12	Vanahlem x Valerian	152	121	101	106	100	104	102	\$16.00
OLIVER P 7J1219	Dutch Hollow Oliver P	A22	Valentino x Mik P	131	121	113	102	105	105	103	\$24.00
ARDENT	Bercar Ardent	A12	David x Spiritual	245	120	107	104	102	107	103	\$18.00

LONGEVITY

Involuntary culling reduces farm profits and no farmer likes cows that leave the herd early.

These cows are a cost to the business in more ways than one. On the other hand, profitable cows are those that produce over a number of lactations. By selecting for longevity, we improve the animal welfare outcomes of the herd and this can only be a good thing both socially and economically.

All Lynns Valentino Irwin-ET

7J1163

IRWIN

Valentino x latola

A22

BPI 192 **Udder Depth** 92 **Overall Type** 111 **Mam System** 111

Cell Count 152 **Daughter Fert** 97 **Survival** 112



Irwin Daughter, Bushlea Irwins Jenny

- Reliable A22 option
- One of the best Udder bulls on the market
- Super combination of Type, Workability and Survival

Broadlin 179 Glenferrie-ET

MANLY

Glenferrie x Valentino

A22

BPI 213 **Udder Depth** 49 **Overall Type** 106 **Mam System** 107

Cell Count 116 **Daughter Fert** 97 **Survival** 110



Manly

- Positive Milk Flow with great Components
- A22 Survival Specialist
- Solid Type profile with Rumps a feature

Leading Longevity Sires

Name	Full Name	A2 Status	Pedigree	BPI	Survival	Cell Count	Dtr Fertility	Overall Type	Mam System	Udder Depth	RRP
ASKN	Brookbora Valentino Askn	A22	Valentino x Tbone	189	113	119	98	111	114	104	\$22.00
VALENTINO 7J1038	All Lynns Louie Valentino	A22	Louie x Paramount	181	113	136	97	114	115	104	\$24.00
IRWIN 7J1163	All Lynns Valentino Irwin-ET	A22	Valentino x latola	192	112	152	97	111	111	108	\$26.00
AXIS 7JE01274	Sugar Grove Valentino Axis	A22	Valentino x Restore	98	112	146	92	110	107	104	\$20.00
VALIN	Kings View Valin 4697	A22	Valentino x Navara	202	111	134	97	114	114	102	\$20.00
DOBSON	White Star Doorman	A12	David x Elton	252	110	115	100	103	103	102	\$20.00
MANLY	Broadlin 179 Glenferrie-ET	A22	Glenferrie x Valentino	213	110	116	97	106	107	99	\$16.00
OLIVER P 7J1219	Dutch Hollow Oliver P	A22	Valentino x Mik P	131	110	121	100	113	113	99	\$24.00
BAZYL	Kaarmona Bazyl	A11	David x Navara	263	110	114	103	106	105	103	\$22.00
ARDENT	Bercar Ardent	A12	David x Spiritual	245	110	120	99	106	107	102	\$18.00

POLLED

SEXED SEMEN

Polled Sires

Name	Full Name	A2 Status	Pedigree	BPI	ASI	Overall Type	Mamm System	Cell Count	Dtr Fertility	Survival	RRP
POLLEDGOLD PP	Broadlin 565 Oliver 3 P	A22	<i>Oliver P x Vanahlem</i>	170	99	110	112	112	98	109	\$18.00
SOLAR-PP 7JE01499	Kash-In Solar PP-ET	A12	<i>Nikon P x Dimension</i>	128	101	105	100	124	99	107	\$24.00
HIPWOOD P	Beulah Hipwood	A22	<i>Oliver P x Brax</i>	186	105	108	110	105	101	109	\$18.00
OLIVER P 7J1219	Dutch Hollow Oliver P	A22	<i>Valentino x Mik P</i>	131	22	113	113	121	100	110	\$24.00
AUSSIEGOLD P	Broadlin Aussiegold P-ET	A22	<i>Elton x Vanahlem</i>	144	88	109	106	136	98	106	\$24.00

Broadlin 565 Oliver 3 P

POLLEDGOLD PP

Oliver P x Vanahlem

A22

BPI	170	ASI	99	Overall Type	110	Mam System	112
Cell Count	112	Daughter Fert	98	Survival	109		



Polledgold

- Homozygous Polled brother to AUSSIEGOLD P
- Solid Type proof in the mould of his sire
- A22 with balanced production

Dutch Hollow Oliver P

OLIVER P

Valentino x Mik P

7J1219

A22

BPI	131	ASI	22	Overall Type	113	Mam System	113
Cell Count	121	Daughter Fert	100	Survival	110		



Oliver P Daughter, Pine Prairie Oliver Fiesta (5)

- A22 sexed option
- Polled sire with exceptional Type
- High Milk sire

Sexed Semen Sires Available

Name	Full Name	A2 Status	Pedigree	BPI	ASI	Overall Type	Mamm System	Cell Count	Dtr Fertility	Survival	Sexed Semen RRP
DOUGGAN	White Star Douglas	A22	<i>David x Murmur</i>	276	199	98	102	145	102	108	\$50.00
ASKN	Brookbora Valentino Askn	A22	<i>Valentino x Tbone</i>	189	116	111	114	119	98	113	\$50.00
POLLEDGOLD PP	Broadlin 565 Oliver 3 P	A22	<i>Oliver P x Vanahlem</i>	170	99	110	112	112	98	109	\$52.00
VALIN	Kings View Valin 4697	A22	<i>Valentino x Navara</i>	202	94	114	114	134	97	111	\$50.00
TAHBILK	Beulah Tahbilk	A22	<i>Vanahlem x Navara</i>	136	134	109	108	95	91	104	\$48.00
OLIVER P 7J1219	Dutch Hollow Oliver P	A22	<i>Valentino x Mik P</i>	131	22	113	113	121	100	110	\$50.00
AUSSIEGOLD P	Broadlin Aussiegold P-ET	A22	<i>Elton x Vanahlem</i>	144	88	109	106	136	98	106	\$50.00

US JERSEY PROOFS

Leading JPI Sires

Name	Full Name	A2 Status	Pedigree	JPI	Net Merit	PTA Type	UDC	FLC	PTA DPR	SCR	Price
SUIT {6} 7JE01707	Jx Kash-In Disco Suit {6}-ET	A12	<i>Disco x Harris</i>	169	550	1.6	20.01	5.0	-2.2		\$22.00
GRANT {6} 14JE00754	Jx Crescent Volcano Grant {6}	A22	<i>Volcano x Galvanize</i>	144	470	1.9	21.66	1.4	-0.7	1.7	\$22.00
SOLAR PP 7JE01499	Kash-In Solar-PP-ET	A12	<i>Nikon-P x Dimension</i>	137	412	1.4	16.42	1.0	-2.4	0.4	\$24.00
CASPIAN	Bushlea Rv Casual-ET	A12	<i>Axis x Legion</i>	116	402	1.8	21.35	5.3	-1.0		\$16.00
AXIS 7JE01274	Sugar Grove Valentino Axis	A22	<i>Valentino x Restore</i>	108	372	1.9	12.12	10.9	-6.1	1.5	\$20.00
OLIVER P 7J1219	Dutch Hollow Oliver P	A22	<i>Valentino x Mik-P</i>	92	343	2.3	21.66	9.4	-2.4	0.6	\$24.00
VALENTINO 7J1038	All Lynns Louie Valentino	A22	<i>Louie x Paramount</i>	77	281	1.9	17.12	6.7	-2.7		\$24.00
IRWIN 7J1163	All Lynns Valentino Irwin-ET	A22	<i>Valentino x latola</i>	61	199	1.7	24.81	-3.1	-3.6		\$26.00

Jx Kash-In Disco Suit {6}-ET

7JE01707

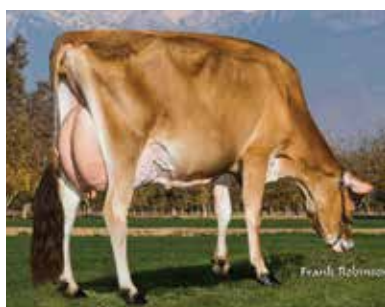
SUIT {6}

Disco x Harris

A12

JPI 169 **UDC** 20.01 **PTA Type** 1.6 **FLC** 5.0

Net Merit 550 **DPR** -2.2 **SCR** —



Suit MGD, Kash-In Dimension 39428-P-ET

- Excellent Outcross Pedigree
- Shallow Udders
- Great Udder Health with high Cell Count rating

Kash-In Solar-PP-ET

7JE01499

SOLAR PP

Nikon-P x Dimension

A12

JPI 137 **UDC** 16.42 **PTA Type** 1.4 **FLC** 1.0

Net Merit 412 **DPR** -2.4 **SCR** 0.4



Solar MGD, Jars-Of-Clay Venerable 1771 2620

- Unique Pedigree
- Homozygous Polled – 100% Polled calves
- Shallow Udders with strong Fore Attachment

Leading US Type Sires

Name	Full Name	A2 Status	Pedigree	JPI	PTA Type	UDC	FLC	DF	FUA	RUH	RRP
OLIVER P 7J1219	Dutch Hollow Oliver P	A22	<i>Valentino x Mik-P</i>	92	2.3	21.66	9.4	1.4	1.7	2.8	\$24.00
GRANT {6} 14JE00754	Jx Crescent Volcano Grant {6}	A22	<i>Volcano x Galvanize</i>	144	1.9	21.66	1.4	1.6	1.9	1.5	\$22.00
AXIS 7JE01274	Sugar Grove Valentino Axis	A22	<i>Valentino x Restore</i>	108	1.9	12.12	10.9	1.7	0.9	1.9	\$20.00
VALENTINO 7J1038	All Lynns Louie Valentino	A22	<i>Louie x Paramount</i>	77	1.9	17.12	6.7	1.3	1.6	1.5	\$24.00
CASPIAN	Bushlea Rv Casual-ET	A12	<i>Axis x Legion</i>	116	1.8	21.35	5.3	0.8	2.3	1.3	\$16.00
IRWIN 7J1163	All Lynns Valentino Irwin-ET	A22	<i>Valentino x latola</i>	61	1.7	24.81	-3.1	0.5	2.2	2.1	\$26.00
SUIT {6} 7JE01707	Jx Kash-In Disco Suit {6}-ET	A12	<i>Disco x Harris</i>	169	1.6	20.01	5.0	1.4	2.5	1.1	\$22.00
SOLAR PP 7JE01499	Kash-In Solar PP-ET	A12	<i>Nikon-P x Dimension</i>	137	1.4	16.42	1.0	1.6	0.8	1.0	\$24.00

Genetics **AUSTRALIA**
Breeding better Australian herds

PRODUCTION																											
Bull ID	A2 Status	Pedigree	BPI	Rel %	ASI	Protein (kg)	Milk (L)	Fat (kg)	Fat%	Rel %	Daughters	Herds	RIP%	Overall Type	Mam System	Rel %	Milking Speed	Temperament	Likeability	Rel %	Cell Count	Cell Count / Rel%	Dtr Fertility	Dtr Fertility / Rel%	RPP	Sexed RPP	
ARBVCYNET	A12	Foske x Oistad	218	79	131	24	0.05	778	25	-0.12	92	82	33	14	101	106	68	104	103	106	82	115	79	102	66	\$22.00	\$48.00
ARBVOGIBEAR	A22	ARBScarebear x David	218	44	169	25	0.17	601	30	0.07	52	0	0	0	94	96	37	103	101	103	46	117	46	105	34	\$20.00	
ARBUDUTY	A22	Cigar x Vest Delta	206	63	194	27	0.13	746	46	0.21	76	29	11	68	105	107	45	97	101	101	59	120	58	98	48	\$18.00	
ARBOSCAR	A22	Foske x Toslikko	198	49	162	23	0.20	457	27	0.11	54	0	0	0	103	103	48	101	102	103	49	119	51	100	49	\$18.00	
ARBSPONGA	A22	Enger x Foske	197	35	140	16	0.15	312	32	0.27	38	0	0	0	100	99	31	100	100	101	36	122	38	105	35	\$18.00	
ARBBRADPITT	A12	Fastup x Fmaeks	193	75	133	16	0.22	167	20	0.19	90	84	34	36	105	100	53	101	101	103	76	144	74	100	59	\$20.00	
ARBAEASR	A22	Aotearoa x Kenneth	191	40	154	23	0.14	572	30	0.08	50	0	0	0	98	96	28	103	100	102	37	111	35	104	26	\$16.00	
ARBEDDIE	A12	Foscena x Toslikko	183	38	156	25	0.19	559	20	-0.05	43	0	0	0	104	104	35	103	101	103	37	106	39	99	34	\$16.00	
ARB-JACKO	A12	Foske x Bobdown	182	49	163	24	0.26	386	20	0.05	54	0	0	0	102	101	46	101	100	103	51	112	51	99	50	\$16.00	
ARBSCAREBEAR	A12	Foske x Andersta	180	81	137	19	0.14	430	26	0.12	93	90	34	13	91	97	78	105	102	105	85	116	82	102	68	\$20.00	\$45.00
ARBABBOTT	A22	Toslikko x Fyrn Aks	178	80	228	32	0.35	492	31	0.15	93	85	27	11	96	97	70	101	101	104	82	73	81	98	67	\$18.00	\$40.00
ARBMIUFASA	A11	Andreai x Foske	172	49	191	34	0.16	964	28	-0.20	56	6	1	100	102	101	37	92	104	103	52	116	48	98	40	\$16.00	
ARBISAALK	A22	Toslikko x ARBBonJovi	167	49	130	19	0.18	378	18	0.03	55	2	1	100	100	102	45	100	102	102	51	126	51	100	48	\$18.00	\$48.00
ARBSURETHING	A22	Valpas x Foske	159	46	151	17	0.21	210	32	0.33	52	0	0	0	102	98	41	101	102	103	47	104	47	101	42	\$16.00	
ARBININJAGO	A22	Valpas x Foske	155	46	141	17	0.12	387	36	0.28	52	0	0	0	102	98	41	101	101	103	47	106	47	101	43	\$16.00	
ARBGLACIER	A12	Foske x Toslikko	88	58	63	7	0.08	118	13	0.12	68	17	4	64	104	104	49	103	101	104	51	102	56	99	50	\$16.00	

TYPE	Mammary System										Bone Quality				Angularity				Muzzle Width				Body Depth				Chest Width				Pin Width				Pin Set				Loin Strength				Foot Angle				Rear Set				Rear View				Under Texture				Under Depth				Fore Attachment				Rear Attach Height				Rear Attach Width				Centre Ligament				Front Test Placement				Test Length				Reliability				Survival				Res Survival				Rel%				Feed saved			
	Overall Type	Mammary System	Bone Quality	Angularity	Muzzle Width	Body Depth	Chest Width	Pin Width	Pin Set	Loin Strength	Foot Angle	Rear Set	Rear View	Under Texture	Under Depth	Fore Attachment	Rear Attach Height	Rear Attach Width	Centre Ligament	Front Test Placement	Test Length	Reliability	Survival	Rel%	Feed saved																																																																																	
	ARBCYGNET	101	106	97	92	97	104	104	98	105	108	109	104	102	97	94	96	99	102	104	105	113	104	90	68	105	62	100	69	18	33																																																																											
	ARBYOGIBEAR	94	96	98	102	100	98	98	99	103	103	100	100	109	97	101	96	95	91	102	98	102	102	95	37	104	31	102	36	40	18																																																																											
	ARBUDUTY	105	107	105	104	104	99	103	101	106	96	99	106	95	106	104	104	103	103	103	108	106	107	95	45	104	43	-78	22	100	50																																																																											
	ARBOSCAR	103	103	101	95	103	104	106	105	103	103	99	103	104	97	101	99	104	96	105	103	102	103	96	48	103	45	100	47	-71	23																																																																											
	ARBSPONGA	100	99	102	98	100	100	101	103	106	107	100	100	104	98	99	98	101	95	100	102	101	100	100	31	102	28	97	31	-44	16																																																																											
	ARBBRADPITT	105	100	102	99	101	105	97	102	101	99	99	101	94	106	99	105	97	102	104	98	97	100	100	53	105	52	100	61	-20	26																																																																											
	ARBCAESAR	98	96	100	102	97	103	100	98	92	99	95	98	105	101	100	99	99	99	92	97	100	98	101	28	102	24	98	29	6	13																																																																											
	ARBEDDIE	104	104	103	98	101	100	102	103	102	100	93	103	99	100	99	103	105	106	103	102	97	98	99	35	104	27	101	31	-64	17																																																																											
	ARB-JACKO	102	101	101	98	104	105	104	103	103	107	105	100	105	98	102	95	97	96	103	103	105	101	98	46	104	45	102	47	-42	21																																																																											
	ARBSCAREBEAR	91	97	96	103	101	100	96	101	100	99	115	94	102	93	91	85	102	102	112	104	94	78	102	68	102	74	69	37																																																																													
	ARBABBOTT	96	97	91	95	101	104	100	103	97	97	100	98	93	98	99	92	101	101	103	98	87	88	99	70	101	64	108	71	88	34																																																																											
	ARB-MUFASA	102	101	101	97	102	102	103	104	106	103	102	100	105	101	101	96	97	97	103	105	103	104	97	37	102	35	100	41	-53	18																																																																											
	ARBISAAK	100	102	96	99	101	104	102	100	98	94	98	101	100	95	102	99	102	102	105	101	95	101	98	45	101	44	100	46	31	21																																																																											
	ARBSURETHING	102	98	103	100	102	105	104	105	105	103	98	104	105	99	97	101	96	96	100	102	102	102	95	41	103	37	99	41	-78	20																																																																											
	ARB-NINJAGO	102	98	104	99	102	103	103	104	104	102	96	102	104	101	98	101	95	95	101	103	102	102	96	41	103	37	98	41	-88	20																																																																											
	ARBGLACIER	104	104	98	94	106	106	108	107	104	105	101	102	101	102	100	97	102	98	103	107	100	97	49	105	45	105	50	50	-51	23																																																																											

*Prices are exclusive of GST and are effective from the 10th August 2019 and are subject to change without notice.

AUSSIE RED

Why Aussie Reds?

The Australian Red Dairy Breed is the breed for farmers looking for productive, efficient healthy cows that can produce and survive under a wide range of environments and production systems. The Aussie Red's superior health and fertility traits make them the perfect match for Holsteins and Jerseys in a three-way crossbreeding program. Moderate stature and an ability to hold onto body condition through lactation make Aussie Reds the robust choice for farmers looking to improve cow health.



Aussie Red Sires

Code	Name	A2 Status	Pedigree	BPI	ASI	Overall Type	Mam System	Cell Count	Dtr Fertility	Survival	RRP
ARBCYGNET	Beaulands Swannies-ET	A12	<i>Foske x Olstad</i>	218	131	101	106	115	102	105	\$22.00
ARBYOGIBEAR	Johville Park Yogi Bear	A22	<i>ARBScarebear x David</i>	218	169	94	96	117	105	104	\$20.00
ARBDUTY	Beaulands Call Of Duty	A22	<i>Cigar x Vest Delta</i>	206	194	105	107	120	98	104	\$18.00
ARBOSCAR	Orana Oscar	A22	<i>Foske x Tosikko</i>	198	162	103	103	119	100	103	\$18.00
ARBPONGA	Beaulands Ponga	A22	<i>Enger x Foske</i>	197	140	100	99	122	105	102	\$18.00
ARBBRADPITT	Beaulands Brad Pitt	A12	<i>Fastrup x Fynaks</i>	193	133	105	100	144	100	105	\$20.00
ARBCAESAR	Waikato Farm Caesar	A22	<i>Aotearoa x Kenneth</i>	191	154	98	96	111	104	102	\$16.00
ARBEDDIE	Beaulands Mcguire	A12	<i>Foscena x Tosikko</i>	183	156	104	104	106	99	104	\$16.00
ARBjacko	Paco Foske Jack	A12	<i>Foske x Bobdown</i>	182	163	102	101	112	99	104	\$16.00
ARBSCAREBEAR	Johville Park Scarebear	A12	<i>Foske x Andersta</i>	180	137	91	97	116	102	102	\$20.00
ARBABBOTT	Beaulands Abbott	A22	<i>Tosikko x Fyn Aks</i>	178	228	96	97	73	98	101	\$18.00
ARBMUFASA	Waikato Farm Mufasa	A11	<i>Andreï x Foske</i>	172	191	102	101	116	98	102	\$16.00
ARBISAAC	Orana Isaac	A22	<i>Tosikko x ARBBonJovi</i>	167	130	100	102	126	100	101	\$18.00
ARBSURETHING	Waikato Farm Surething	A22	<i>Valpas x Foske</i>	159	151	102	98	104	101	103	\$16.00
ARBninjago	Beaulands Ninjago	A22	<i>Valpas x Foske</i>	155	141	102	98	106	101	103	\$16.00
ARBGLACIER	Beaulands Glacier	A12	<i>Foske x Tosikko</i>	88	63	104	104	102	99	105	\$16.00

AUSSIE RED

Beaulands Swannies-ET

ARB CYGNET

Foske x Olstad

A12

BPI	218	ASI	131	Overall Type	101	Mam System	106
Cell Count	115	Daughter Fert	102	Survival	105		



ArbCygnet

- Great Protein and Milk Flow based on 82 daughters
- Correct Feet, Legs and Rumps
- Great Teat Placement

Johville Park Yogi Bear

ARB YOGIBEAR

ARBScarebear x David

A22

BPI	218	ASI	169	Overall Type	94	Mam System	96
Cell Count	117	Daughter Fert	105	Survival	104		



ArbYogiBear

- A22 with strong production potential
- ARBSCAREBEAR x David
- Selected using Genomic Technology

Beaulands Ponga

ARB PONGA

Enger x Foske

A22

BPI	197	ASI	140	Overall Type	100	Mam System	99
Cell Count	122	Daughter Fert	105	Survival	102		



ArbPonga

- Elite young sires
- A22 option
- Great production potential

Johville Park Scarebear

ARB SCAREBEAR

Foske x Andersta

A12

BPI	180	ASI	137	Overall Type	91	Mam System	97
Cell Count	116	Daughter Fert	102	Survival	102		



ArbScarebear

- Balanced Production Proof
- Great Workability Traits
- Reliable choice

ILLAWARRA

Riversleigh Thompson

RRP \$20.00

THOMPSON

Elmo x V Prince

A22

Sire:	Creighton Park Elmo 2108 th
Dam:	Riversleigh Prince Tulip 12 th VG89
Herd Book:	5139
NASIS:	12ISP16
Breeder:	Riversleigh Illawarras, Tatura VIC



THOMPSON



Thompson Dam, Riversleigh Prince Tulip 12

Dam: Riversleigh Prince Tulip 12th VG89

5yrs. 8 months 8772ltrs 337 fat 3.8% 289 protein 3.3% 305+ days 108 PI

Outstanding Production & Pedigree

Dam is VG89 3rd lactation, Grand Dam EX90 3E STP, & Great Grand Dam VG87

Dam was Victorian Red Cow On Farm Challenge Champion 2015. Tulip won her class again in 2017

Riversleigh Alston Montagna

RRP \$20.00

MONTAGNA

Elmo x Distrigene

A12

Sire:	Creighton Park Elmo 2108 th
Dam:	Alston Distrigene Madeline
Herd Book:	5140
NASIS:	12ISP15
Breeder:	M Tuhan & D Patterson, Tatura, VIC



MONTAGNA



Alston Distrigene Madeline

Dam: Alston Distrigene Madeline

6yrs. 5 months 9348ltrs 391 fat 4.2% 282 protein 3.0% 305+ days 107 PI

EX90 Dam with three sisters VG or EX Longevity is a feature of this family

Maternal sister to Montagna - Riversleigh Alston Madeline recently scored EX90 on 3rd Lactation. She is a 3x class winner at IDW.

Gorbro Joans Jazz

RRP \$20.00

JAZZY

ABSManu x Jet-Red

A12

Sire:	Eagle Park Manu
Dam:	Llandoverly JR Joan 982 EX94
Herd Book:	5158
NASIS:	12ISP17
Breeder:	Gorbro Farms, Cohuna, VIC



JAZZY



Llandoverly JR Joan 982 EX94

Dam: Llandoverly JR Joan 982 EX94

3yrs. 10 months 10681ltrs 376 fat 3.5% 373 Protein 3.5% 305 days

1st 5yr. Old and Reserve Champion IDW 2017

1st Mature Cow, Best udder of Show

and Grand Champion IDW 2018 Reserve Supreme Champion IDW 2018

Grand Dam: Llandoverly Futurions Joan EX90

5yrs. 11 months 9643ltrs 480 Fat 4.8% 308 Protein 3.2% 305 days

Reserve Champion Cow IDW

PRODUCTION																								
Bull ID	Pedigree	A2 Status	ISU	Under Health	Survival	Calving Ease	Daughter Fertility	Milking Speed	Temperament	INEL	KgP	P%	Milk	KgF	F%	Rel %	dtrs	herds	Overall Type	Mammary System	Herd Book	NASIS ID	Source	RFP
MATISSE	Incross x Amica	A12	142	0.6	0.3	90	0.5	0.4	0.5	27	19	1.4	361	30	1.1	69	0	0	0.9	0.9	M000538116643	94NON05	Evolution, France	\$25.00
JEDUSOR	Geyser x Vitrol	A22	119	0.4	0.4	93	0.1	0.4	0.2	35	31	1.1	689	20	-1.0	79	18	15	0.9	1.4	FR2228243320	94NOL05	Evolution, France	\$28.00
TYPE																								
Bull ID	Overall Type	Mammary System	Foot & Leg Composite	Stature	Chest Depth	Chest Width	Rump Length	Pin Width	Rump Angle	Foot Angle	Rear Leg side view	Rear Leg Rear View	Locomotion	Udder Depth	Udder Balance	Fore Attachment	Rear Attachment Height	Cent Ligament	Teat Placement front	Teat Direction	No. Daughters	No. Herds	Rel%	
MATISSE	0.9	0.9	1.0	0	-0.4	-0.5	0.1	-0.6	0.5	0.8	0.4	1.3	0.3	0.1	1.0	1.5	1.2	0.9	0.5	0.1	0	0	68	
JEDUSOR	0.9	1.4	0.6	0.7	-0.3	-0.4	0.2	-0.2	-0.3	1.4	0.7	0.5	0.5	1.1	0.6	1.0	1.7	0.4	2.3	0.9	6	6	73	

*Prices are exclusive of GST and are effective from the 10th August 2019 and are subject to change without notice.

More information visit www.genaust.com.au

Montbeliarde / August 2019

PRODUCTION																								
Bull ID	Pedigree	A2 Status	ISU	Udder Health	Survival	Calving Ease	Daughter Fertility	Milking Speed	Temperament	INEL	KgP	P%	Milk	KgF	F%	Rel %	dtrs	herds	Overall Type	Mammary System	Herd Book	NASIS ID	Source	RPP
JB HARPON	Flipex JB x Triomphe	A22	156	0.4	0.1	88	-0.9	104	105	53	40	1.5	865	56	2.6	95	391	250	113	102	FR3921920863	94MOJ13	Jura Betail, France	\$30.00
JB INDOLOR	Flipex JB x Oran JB	A12	154	-0.3	-0.1	90	1.3	105	125	41	28	2.6	179	42	4.6	89	69	58	108	102	FR3925531266	94MOK07	Jura Betail, France	\$26.00
JB JORDREN	Elastar x Diderot	A22	149	0.8	0.4	90	1.2	111	100	29	21	1.6	238	32	3.1	72	0	0	105	103	FR7251982851	94MOL04	Jura Betail, France	\$30.00
JB IDAHO	Flash x Triomphe	A12	122	-1.1	-0.2	90	-1.4	103	114	32	29	0.3	663	21	-1.1	87	51	45	115	104	FR5375489524	94MOK04	Jura Betail, France	\$20.00
JB LANZAC	Ibanez x Bogoro	A11	119	-0.3	0.4	90	0.00	121	114	12	9	0.6	60	13	0.9	72	0	0	107	115	FR5377645658	94MOM03	Jura Betail, France	\$24.00
JB FRACAS	Urbaniste x Micmac	A22	117	-0.4	0.5	91	0.6	107	117	13	9	-0.4	360	20	0.4	95	241	158	106	106	FR8519408699	94MGO05	Jura Betail, France	\$25.00
JB JOMBRIK	Hombrik JB x Funky JB	A22	112	-0.3	0.5	88	-0.7	115	114	10	9	-1.3	346	13	-0.4	72	0	0	115	114	FR3936033778	94MOL03	Jura Betail, France	\$26.00

TYPE	Bull ID	Overall Type	Mammary System	Foot & Leg Composite	Stature	Body Depth	Chest Width	Chest depth	Rump Length	Pin Width	Thurl Width	Rump Angle	Foot Angle	Rear Leg side view	Rear Leg Rear View	Foot & Leg Score	Udder Depth	Udder Balance	Fore Attachment	Rear Attachment Height	Rear Attachment Width	Cent Ligament	Teat Placement front	Teat Direction	Teat Length	No. Daughters	No. Herds	Rel%
	JB HARPON	113	102	111	114	125	117	98	104	111	104	111	114	107	101	111	89	123	102	87	98	99	101	99	90	301	194	95
	JB INDOLOR	108	102	127	101	103	110	102	89	87	77	116	108	118	90	127	95	109	105	109	115	103	86	80	104	58	49	90
	JB JORDREN	105	103	108	96	107	103	100	98	117	95	101	102	97	115	103	89	101	124	98	117	104	108	95	1200	0	0	71
	JB IDAHO	115	104	110	108	125	114	121	98	103	94	121	95	118	111	110	91	121	102	97	105	124	90	104	83	44	39	88
	JB LANZAC	107	115	102	99	98	91	97	93	104	95	98	105	106	88	102	100	111	112	111	106	113	119	111	113	0	0	71
	JB FRACAS	106	106	113	106	101	90	102	107	105	99	87	96	95	98	113	98	104	112	98	102	109	105	102	109	199	129	95
	JB JOMBRIK	115	114	103	103	118	101	112	108	109	93	95	109	100	89	114	100	117	112	104	111	105	118	107	1	1	72	

2019 MERCHANDISE

Complete DIY AI Kit

Everything you need in one durable stainless steel kitbox fully compartmentalised to keep everything in its place.

- 2.5 Litre AI Lube
- Lube bottle
- Paper towels
- 0.25ml AI Guns x 2
- 0.5ml AI Gun x 1
- FiL Tell Tail Aerosol
- Polysem red gloves
- AI Thaw flask
- Cito thaw monitor
- Thermometer
- Scissors
- AI tweezers
- Kit box
- 50P AI Sheaths x 2

\$345⁰⁰

VALUED AT \$400

Also available - AI Kit box only, \$150 + GST

\$14²⁰
per 500ml can

**Tell Tail
Aerosol
cans**

'fluoro tail paint'

AI Lube

This high quality obstetric lubricant is AI safe and also useful for calving, pregnancy testing etc. It is also excellent value.

5 LITRE

\$22⁵⁰

2.5 LITRE

\$14⁰⁰

Polysem gloves

Orange
25 micron
\$20.00

Red
30 micron
\$24.00

Yellow
35 micron
\$26.00

Alpha sheaths

\$18

per packet
of 50

ESTROTECT™
BREEDING INDICATOR

Dairy Mac Superthaw

The Dairymac Digital SUPERTHAW™ is designed and manufactured in the UK. It is based on a comprehensive list of 'needs' and 'desires' from our discussions with farmers, AI Technicians and Vets. It is very important that bull semen is thawed consistently at the right temperature. Available with either flip lid or gun warmer.

\$360⁰⁰

CIDR

The original cattle oestrus synchronisation insert

There are many benefits to using Synchronising inserts to assist in reproduction, potentially including:

- better fertility - increased conception rates
- tighter calving pattern
- easier cattle management
- reducing the time spent on heat detection
- treatment of anoestrus
- reduced culling of empty cows
- confirmed calving dates, and much more.

MVE XC20 Signature Tank

The XC20 Signature Series offers the latest technology in farm storage tanks.

Viking Reds / August 2019

PRODUCTION

Bull ID	Name	Pedigree	A2 Status	gNTM +	Udder Health	Longevity	Calving Ease	Daughter Fert	Milking Speed	Temp	Frame	Feet and Legs	Udder	Production Index	Milk	kgP	P%	kgF	F%	Herd Book	NASIS	Breeder	RRP
VR VILPERI	VR Viking Viljar Vilperi	VR Viljar x VR Vimur R	A22	33	118	116	113	109	113	103	108	113	123	113	104	109	106	115	113	FIN48035	91AYP05	Kallioinen Pekka, Hytynite, Finland	\$26.00
VR LUKE P	VR Lucky Luke P	VR Lucky X Nora Prästgård	A22	13	99	105	104	107	117	103	101	102	109	105	91	100	119	103	117	DNK37896	89UUN05	Søren Røndjerg, Denmark	\$20.00
VR FUTARI	VR Antilan Faabeli Futari	VR Faabeli X VR Sampo	A22	20	108	105	103	103	108	102	83	112	109	111	106	114	112	106	100	FIN47607	91UUM04	Hanna Myrskyranja, Finland	\$20.00

TYPE

Bull ID	Stature	Chest Width	Body Depth	Rump Width	Rump Angle	Top Line	Legs Side	Legs Rear View	Foot Angle	Bone Quality	Hock Quality	Fore Udder	Rear Udder Height	Rear Udder Width	Suspensory Ligament	Udder Depth	Udder Balance	Teat Length	Teat Placement Front	Teat Placement Rear
VR VILPERI	109	102	108	103	104	102	108	100	102	113	116	126	110	100	102	127	111	99	105	95
VR LUKE P	106	100	94	104	97	118	95	97	115	102	96	101	103	97	108	114	107	102	109	96
VR FUTARI	101	81	78	95	98	89	90	105	87	115	111	102	111	103	102	115	107	104	96	98

Ayrshire / August 2019

Bull ID	Name	A2 Status	Pedigree	Milk	PTA Pro	% Pro	PTA Fat	% Fat	DPR	PL	SCR	SCS	Milk Rel	Milk Dtrs	Milk Herd	PTA Type	UDC	PTI	Net Merit	RRP
TIMOTHY 7AY00119	Conebella Dixon's Timothy	A11	Dixon x Percy	1055	43	0.05	57	0.08	-0.8	-0.3	-2.0	2.89	43	0	0	0.7	-0.06	545	358	\$26.00
BOSTIC 7AY00123	Palmyra Reagan Bostic	A12	Reagan x Aclaim	621	22	0.01	28	0.02	0.1	0.9		3.03	42	0	0	0.9	0.49	490	223	\$24.00
SAMSON 7AY00117	Visserdale Selwood P Samson	A12	Prime x Remington	516	16	0.00	18	-0.01	-1.1	0.3		2.9	48	0	0	0.8	0.46	467	118	\$22.00
RADISSON 7AY00122	Palmyra Booth Radisson	A12	Booth X Burdette	432	13	0.00	24	0.04	-0.8	1.6		2.83	44	0	0	1.4	0.85	486	208	\$26.00

Guernsey / August 2019

Bull ID	Full Name	A2 Status	Pedigree	Milk	PTA Pro	% Pro	PTA Fat	% Fat	DPR	PL	SCR	SCS	Milk Rel	Milk Dtrs	Milk Herd	PTA Type	UDC	FLC	PTI	Net Merit	RRP
JAGUAR 7GU00458	Spring Hill Jokes Jaguar-ET	A22	Conqueror x Tiller	149	-2	-0.04	6	0.00	0.6	1.8	3.6	2.78	88	71	37	1.3	1.5	1.1	40	121	\$26.00
CHARMING 7GU00472	Walnut Ridge Prince Charming	A22	Pilot x Yagibear	-278	2	0.06	28	0.24	1.3	2.6	-1.0	2.91	48	0	0	1.8	1.6	1.7	86	259	\$28.00
NEWTON 7GU00470	Ripley Farms Jag Newton	A22	Jaguar x Aistar	443	10	-0.02	16	-0.02	1.8	3.6	0.7	2.87	51	0	0	0.6	0.9	1.2	78	246	\$24.00
POPEYE 6GU00103	BLA Art Novak Popeye	A22	Novak x Aaron	363	11	0.00	14	-0.01	0.1	2.6		2.9	52	0	0	1.4	1.4	1.2	66	195	\$24.00

*Prices are exclusive of GST and are effective from the 10th August 2019 and are subject to change without notice.

More information visit www.genaust.com.au

Brown Swiss / August 2019

PRODUCTION

Bull ID	Full Name	Pedigree	A2 Status	ITE	Rel %	Longevity	Milking Speed	Cell Count	Functionality & Fitness	Calving Interval	Daughters	Herds	KgP	P%	Milk	KgF	F%	Rel %	dtrs	herds	Overall Type	Udder Composite	Feet & Leg Composite	Herd Book	NASIS ID	RPP	Sexed RPP
ITBENDER	P.Livello Bive Pays Bender ET	Biver x Payssli	A22	1169	71	122	108	120	135	104	0	0	38	0.16	707	25	-0.06	71	0	0	133	131	139	IT034990885777	95SBM05	\$55.00	\$90.00
SUPDUPLAGO	Superbrown Duplago	Falco x Dally	A22	1116	69	110	111	121	128	111	0	0	44	0.09	1018	38	-0.05	69	0	0	122	125	136	IT021002241600	—	\$32.00	\$85.00
SUPSUPERSTAR	Superbrown Kiba Superstar	Blooming X Payssli	A12	1044	71	103	106	107	129	112	0	0	37	0.18	663	29	0.01	71	0	0	136	133	136	IT014990127961	95SBN03	\$24.00	\$85.00
SUPHADRIAN	Superbrown Hadrian	Huray x Poster	A22	1039	86	114	124	115	127	108	89	80	38	0.20	641	25	-0.03	86	89	80	112	109	120	IT021002008800	95SBK05	\$18.00	
SUPTVEZ	Superbrown Tavez	Tentation x Vivid	A22	946	70	112	110	111	125	122	0	0	27	0.10	554	24	0.00	70	0	0	124	122	137	IT021002263900	—	\$20.00	
SUPHOTEL	Superbrown Hotel	Hardy x Payssli	A12	876	71	121	117	112	125	117	0	0	27	0.07	608	33	0.09	71	0	0	113	110	109	IT021002119600	95SBM06	\$20.00	
SUPALEXIS	Superbrown Alexis	Arrow x Payssli	A12	824	71	114	114	109	125	120	0	0	19	0.01	510	13	-0.12	71	0	0	125	126	143	IT021002192110	—	\$20.00	
SUPFENER	Superbrown Kiba Fener ET	Falk X Agenda	A11	733	72	118	113	114	124	111	0	0	14	-0.03	450	21	0.02	72	0	0	122	123	132	IT014990128042	95SBN04	\$22.00	
SUPVIVID	Superbrown Vivid	Vigor x Moliado	A22	682	99	116	105	109	118	113	2869	1692	31	-0.12	1143	29	-0.23	99	2869	1692	111	109	125	01IT021002008800	95SBK05	\$18.00	

TYPE

Bull ID	Overall Type	Udder Composite	Feet & Leg Composite	Stature	Strength	Body Depth	Top Line	Rump Angle	Thurl Width	Hear Leg Set	Hock Quality	Pastern	Foot Height	Fore Ud. Att.	Rear Ud. W.	Rear Ud. H.	Udder Depth	Udder Cleft	T. Placement	T. Length	Rel%
ITBENDER	133	131	139	137	143	137	126	131	129	93	96	136	136	119	113	124	121	141	117	68	71
SUPDUPLAGO	122	125	136	114	109	101	131	101	121	104	133	130	120	116	125	133	129	128	130	78	69
SUPSUPERSTAR	136	133	136	144	156	140	160	108	128	109	106	119	150	122	124	127	137	140	152	86	71
SUPHADRIAN	112	109	120	114	100	102	128	105	126	109	133	114	123	104	102	116	98	122	117	113	86
SUPTVEZ	124	122	137	133	117	114	103	111	116	93	127	123	123	101	111	124	128	140	136	81	70
SUPHOTEL	113	110	109	121	117	114	89	117	105	98	111	99	110	110	111	117	100	115	86	115	71
SUPALEXIS	125	126	143	118	128	113	116	93	136	88	118	150	147	115	119	125	105	136	133	94	71
SUPFENER	122	123	132	121	119	112	123	115	119	88	116	121	131	132	140	130	98	121	114	85	72
SUPVIVID	111	109	125	107	93	96	122	129	116	115	148	117	120	118	130	107	108	84	127	73	99

*Prices are exclusive of GST and are effective from the 10th August 2019 and are subject to change without notice.

More information visit www.genaust.com.au



Vivid Daughter, Vivid Gabriela



Hotel MGD, Frenner Rivaldo Niki



Superstar Dam, Barri Payssli Noa ET



Bender Dam, Livello Payssli Dalila

ESTROTECT™
BREEDING INDICATOR

BREED



DON'T
BREED

AS GOOD AS A BULL™

www.ESTROTECT.com

©2018 ESTROTECT. ESTROTECT and As Good As A Bull are trademarks of Rockway, Inc.



BREEDING SUCCESS

THE WORLD'S LEADING BREEDING MANAGEMENT INDICATOR NOW FEATURING THE BREEDING BULLSEYE™!

Genetecs AUSTRALIA
Breeding better Australian herds

Genetics Australia Co-Operative Limited

PO Box 195, BACCHUS MARSH, VIC 3340, AUSTRALIA

P: +61 3 5367 3888 **F:** + 61 3 5367 5100 **Freecall:** 1800 039 047

www.genaust.com.au

ORDERS & CUSTOMER SERVICE

T: 03 5367 3888

E: orders@genaust.com.au

Nigel Semmens

BEEF SALES MANAGER

M: 0439 417 941

E: nsemmens@genaust.com.au

Coleman Baulch

SALES REPRESENTATIVE

Western Victoria, East Gippsland & Tasmania

M: 0429 473 563

E: cbaulch@genaust.com.au

Gerard Collins

SALES REPRESENTATIVE

Northern Victoria

M: 0428 387 276

E: gcollins@genaust.com.au

Anthony Shelly

CHIEF EXECUTIVE OFFICER

M: 0408 529 410

E: ashelly@genaust.com.au

Greg Tiller

REGIONAL SALES MANAGER

North Victoria, Riverina NSW, Fleurieu & Hills South Australia

M: 0407 366 985

E: gtiller@genaust.com.au

Andrew Medhurst

SALES REPRESENTATIVE

Northern Victoria & Far South Coast NSW

M: 0417 575 932

E: amedhurst@genaust.com.au

Ian Noakes

SALES REPRESENTATIVE

Western Australia

M: 0409 297 805

E: inoakes@genaust.com.au

Peter Thurn

BREEDING & GENETICS MANAGER

M: 0417 575 986

E: pthurn@genaust.com.au

Gerard Brislin

REGIONAL SALES MANAGER

Gippsland & Tasmania

M: 0408 107 019

E: gbrislin@genaust.com.au

Nathan Mugavin

SALES REPRESENTATIVE

Gippsland

M: 0429 218 721

E: nmugavin@genaust.com.au

John Harle

SALES REPRESENTATIVE

Queensland & NSW

T: 07 3818 0564

E: jharle@genaust.com.au

Graeme Cowan

MERCHANDISE MANAGER

T: 03 5367 9221

E: gcowan@genaust.com.au

Rodney Brooks

REGIONAL SALES MANAGER

Western Victoria, South East South Australia,

South & North Coast NSW

M: 0408 741 034

E: rbrooks@genaust.com.au

Ash Hogg

SALES REPRESENTATIVE

Northern Victoria

M: 0407 842 144

E: ahogg@genaust.com.au