



STgenetics[®]
Australia

Holstein Sire Directory
Spring 2019





Welcome to the 2019 Spring Directory

PAGE	NAME	A2 STATUS	RRP \$	Sexed ^{ULTRA} 4M SEXED RRP \$
10	ABBOTSFORD	A2A2	\$40.00	\$90.00
10	ALTITUDE			\$60.00
11	APPLEFREE	A2A2		\$60.00
11	APPLEWAY			\$60.00
13	ARISTOCRAT			\$80.00
13	B52	A2A2	\$28.00	\$55.00
4	BARBATOS		\$24.00	\$50.00
14	BETA	A2A2	\$20.00	
14	BILL	A2A2	\$20.00	\$50.00
15	BLANCO		\$30.00	\$50.00
15	BLUNDER		\$20.00	\$48.00
4	BOLD-P	A2A2	\$22.00	\$55.00
17	CECIL		\$17.00	
17	CHANCE			\$52.00
18	CHARL	A2A2		\$90.00
18	CONTENDER	A2A2	\$20.00	
19	CRUSHTIME			\$75.00
22	CURSOR	A2A2	\$25.00	\$55.00
21	CZAR	A2A2	\$30.00	\$65.00
21	DEDICATE	A2A2		\$85.00
22	DINERO			\$100.00
19	DUBAI	A2A2		\$125.00
23	EDGE		\$20.00	\$48.00
23	EMILIO		\$25.00	\$75.00
24	ESQUIRE		\$30.00	\$70.00
24	ETA	A2A2		\$66.00
25	EVOLVE-P	A2A2	\$20.00	\$50.00
5	FONDOO	A2A2	\$28.00	\$60.00
25	GAMMA		\$22.00	\$48.00
27	GOODWHONE		\$20.00	\$48.00
5	HEIDRICK		\$22.00	\$50.00
27	HONDO	A2A2	\$22.00	\$50.00
28	HOORAH		\$36.00	\$66.00
28	IMPERIAL	A2A2		\$100.00
29	IRVINE	A2A2		\$70.00
29	JOLT			\$60.00
30	JUMPSTART			\$200.00
30	LANCASTER	A2A2	\$18.00	\$48.00
31	LANDSLIDE		\$26.00	\$60.00
31	LEDOUX	A2A2	\$20.00	\$50.00
33	LEGO	A2A2	\$16.00	

PAGE	NAME	A2 STATUS	RRP \$	Sexed ^{ULTRA} 4M SEXED RRP \$
33	LUMINA			\$75.00
34	MADDEN	A2A2	\$20.00	
34	MAROON			\$70.00
35	METZ	A2A2		\$70.00
6	MILIO			\$90.00
35	MILO	A2A2	\$15.00	\$50.00
36	MITCHELL		\$26.00	\$75.00
36	MOOVIN			\$100.00
38	NASHVILLE	A2A2		\$120.00
38	NIGHTLIFE	A2A2		\$50.00
39	NITRO		\$20.00	\$55.00
39	NO CAN DO	A2A2	\$24.00	
40	PACO			\$60.00
7	PETE - PP		\$24.00	\$50.00
40	PICKFISH		\$22.00	\$65.00
42	POPEYE	A2A2	\$28.00	\$65.00
41	POWERFUL-PP	A2A2	\$30.00	\$56.00
43	REDROCK	A2A2	\$28.00	\$60.00
43	RESERVE	A2A2	\$20.00	
45	REVIVAL		\$24.00	\$50.00
45	ROCCO	A2A2	\$32.00	\$70.00
46	ROUX	A2A2		\$150.00
46	RUBI-FIRE	A2A2	\$20.00	\$48.00
47	RUBI-HAZE	A2A2	\$22.00	\$48.00
7	SAMITE		\$22.00	\$55.00
8	SHAYDON		\$25.00	\$55.00
8	SHEAN	A2A2	\$22.00	\$55.00
47	STOCKTON		\$45.00	\$70.00
48	SUPERSHOT		\$30.00	
48	SUPERSTYLE		\$18.00	
50	SUPREME	A2A2	\$16.00	
50	TACOMA			\$65.00
51	TAMPA	A2A2		\$120.00
51	TAMPICO			\$60.00
52	TWIST	A2A2	\$22.00	
52	TWITCH			\$80.00
9	TYSON		\$18.00	\$45.00
53	VERDE			\$70.00
53	VINCE		\$28.00	
54	WATSON	A2A2		\$80.00

ASK FOR IT BY NAME



-  Conception rates rivaling with conventional semen.
-  90% of calves born are females.
-  Process remove dead and abnormal cells from semen.
-  Available for our complete line-up.

Beware of imitations.

Ask for the one and only **Sexed** **ULTRA4M**

ST_{gen} FRESH ULTRA4M

NOW AVAILABLE FROM SELECTED SIRES
(T&C APPLY)

Lightning Ridge

BARBATOSAlso available FRESH SEXED (T&C apply)
STgen FRESH ULTRA 4M
NEW

Bourbon x Denver x Altaoak

HBN: HOAUS000HO2028775 NASIS: STGBARBATOS

BETA CASEIN: A1/A2

NAAB: 522H003780

Sire: Wa-Del Abs Bourbon Dam: Endco Denver Charmed
MG Sire: Mr Mogul Denver 1426 MG Dam: Peak Charm VG85

USDA - CDCB GENOMIC SIRE EVALUATION | AUGUST 2019 | DTRS 0 HERDS 0 | 78% REL

MILK LBS	FAT LBS	FAT %	PROT LBS	PROT %
2023	92	0.06	74	0.04

USDA CDCB TYPE SUMMARY 08/2019

PTAT +1.57 77%R UDC+2.10 FLC+0.58 BSC +0.81 0 D / 0 H

			-2	-1	0	1	2
Stature	+1.21	Tall					
Strength	+0.91	Strong					
Body Depth	+0.43	Deep					
Dairy Form	+0.79	Open Rib					
Rump Angle	-0.39	High Pins					
Thurl Width	+1.27	Wide					
Rear Legs-Side View	-1.04	Posty					
Rear Legs-Rear View	+0.68	Straight					
Foot Angle	+1.67	Steep					
Feet & Legs Score	+0.66	High					
F. Udder Attachment	+2.11	Strong					
Rear Udder Height	+3.07	High					
Rear Udder Width	+2.82	Wide					
Udder Cleft	+1.24	Strong					
Udder Depth	+1.55	Shallow					
Front Teat Placement	+1.13	Close					
Rear Teat Placement	+1.29	Close					
Teat Length	-0.03	Short					

MGD: PEAK CHARM VG85



CALVING, HEALTH, FERTILITY USDA - CDCB EVALUATION

DAUGHTER PREGNANCY RATE	+0.1	73%
PRODUCTIVE LIFE	+4.7	74%
FERTILITY INDEX	+0.6	
LIVABILITY	-0.3	67%
SOMATIC CELL SCORE	2.77	77%
GESTATION LENGTH	-1	
SIRE CALVING EASE	8.1%	62%
DAUGHTER CALVING EASE	4.4%	60%
NET MERIT \$	830	

GTPI
2684**AUSTRALIAN INDICES (08/2019)**

BPI	225	66%
HWI	186	59%
TWI	219	64%
OVERALL TYPE	101	57%
MAMMARY	103	57%
DAUGHTER FERTILITY	105	51%
HEAT TOLERANCE	95	38%

\$24.00 Conv**\$50.00 Sexed ULTRA 4M**

Vala Suits

BOLD - PAlso available FRESH SEXED (T&C apply)
STgen FRESH ULTRA 4M
NEW

Suits x Duke x Powerball

80% Black

HBN: HOAUS000HO2052026 NASIS: STGBOLD

BETA CASEIN: A2/A2

NAAB: 522H003897

Sire: Coomboona Ocean Suits Dam: Coomboona Duke Bolade
MG Sire: SSI Montross Duke MG Dam: Lightningridge RB Bold

USDA - CDCB GENOMIC SIRE EVALUATION | AUGUST 2019 | DTRS 0 HERDS 0 | 78% REL

MILK LBS	FAT LBS	FAT %	PROT LBS	PROT %
1181	79	0.12	55	0.07

USDA CDCB TYPE SUMMARY 08/2019

PTAT +1.72 74%R UDC+1.79 FLC+0.78 BSC 0 D / 0 H

			-2	-1	0	1	2
Stature	+1.07	Tall					
Strength	+0.70	Strong					
Body Depth	+0.61	Deep					
Dairy Form	+1.49	Open Rib					
Rump Angle	-0.01	High Pins					
Thurl Width	+1.27	Wide					
Rear Legs-Side View	-0.40	Posty					
Rear Legs-Rear View	+0.17	Straight					
Foot Angle	+1.09	Steep					
Feet & Legs Score	+1.11	High					
F. Udder Attachment	+1.85	Strong					
Rear Udder Height	+2.80	High					
Rear Udder Width	+2.58	Wide					
Udder Cleft	+1.27	Strong					
Udder Depth	+1.00	Shallow					
Front Teat Placement	+0.92	Close					
Rear Teat Placement	+0.75	Close					
Teat Length	-0.38	Short					

MGD: CALBRETT UNO BABY GIRL



CALVING, HEALTH, FERTILITY USDA - CDCB EVALUATION

DAUGHTER PREGNANCY RATE	-0.4	71%
PRODUCTIVE LIFE	+3.9	
FERTILITY INDEX	-0.1	
LIVABILITY	+1.0	
SOMATIC CELL SCORE	2.69	
GESTATION LENGTH	+1	
SIRE CALVING EASE	7.8%	54%
DAUGHTER CALVING EASE	4.2%	52%
NET MERIT \$	702	

GTPI
2519**AUSTRALIAN INDICES (08/2019)**

BPI	291	64%
HWI	235	57%
TWI	308	63%
OVERALL TYPE	106	53%
MAMMARY	106	53%
DAUGHTER FERTILITY	104	48%
HEAT TOLERANCE	96	38%

\$22.00 Conv**\$55.00 Sexed ULTRA 4M**

Kirk Andrews

FON DOO

Duke x Supershot x McCutchen

65% Black

HBN: HOAUS000001983409

NASIS: STGFOND00

BETA CASEIN: A2/A2

NAAB: 551H003702

Sire: S-S-I Montross Duke Dam: Claynook Fondness Supershot VG87
MG Sire: Cogent Supershot MG Dam: View-Home Mcc Found VG87

USDA - CDCB GENOMIC SIRE EVALUATION | AUGUST 2019 | DTRS 0 HERDS 0 | 78% REL

MILK LBS	FAT LBS	FAT %	PROT LBS	PROT %
2844	91	-0.05	89	0.01

USDA CDCB TYPE SUMMARY 08/2019

PTAT +2.45 78%R UDC+2.20 FLC+0.31 BSC +0.50 0 D / 0 H

Stature	+1.84	Tall		
Strength	+1.43	Strong		
Body Depth	+1.31	Deep		
Dairy Form	+2.67	Open Rib		
Rump Angle	+0.32	Sloped		
Thurl Width	+1.14	Wide		
Rear Legs-Side View	+1.16	Sickle		
Rear Legs-Rear View	-0.14	Hock In		
Foot Angle	+0.26	Steep		
Feet & Legs Score	+0.92	High		
F. Udder Attachment	+2.62	Strong		
Rear Udder Height	+3.90	High		
Rear Udder Width	+3.59	Wide		
Udder Cleft	+1.06	Strong		
Udder Depth	+1.20	Shallow		
Front Teat Placement	+0.40	Close		
Rear Teat Placement	+0.58	Close		
Teat Length	+1.30	Long		

DAM: CLAYNOOK FONDNESS SUPERSHOT



CALVING, HEALTH, FERTILITY USDA - CDCB EVALUATION

DAUGHTER PREGNANCY RATE	+0.0	75%
PRODUCTIVE LIFE	+5.4	74%
FERTILITY INDEX	+0.2	
LIVABILITY	-0.9	68%
SOMATIC CELL SCORE	2.91	78%
GESTATION LENGTH	-4	
SIRE CALVING EASE	8.2%	63%
DAUGHTER CALVING EASE	4.0%	60%
NET MERIT \$	864	

GTPI
2750

AUSTRALIAN INDICES (08/2019)

BPI	286	66%
HWI	231	59%
TWI	293	65%
OVERALL TYPE	105	57%
MAMMARY	107	57%
DAUGHTER FERTILITY	107	53%
HEAT TOLERANCE	99	38%

\$28.00 Conv

\$60.00 Sexed **ULTRA4M**

Coomboona Expander

HEIDRICK

Expander x Doorman x Snowman

25% Black

HBN: HOAUS0000H01998193

NASIS: STGHEIDRICK

BETA CASEIN: A1/A2

NAAB: 224H003724

Sire: Stantons Expander Dam: Crasdale Dm Hunter VG86
MG Sire: Val Bisson Doorman MG Dam: Cookiecutter Humorist VG86

USDA - CDCB GENOMIC SIRE EVALUATION | AUGUST 2019 | DTRS 0 HERDS 0 | 78% REL

MILK LBS	FAT LBS	FAT %	PROT LBS	PROT %
101	24	0.07	16	0.05

USDA CDCB TYPE SUMMARY 08/2019

PTAT +3.68 76%R UDC+3.02 FLC+1.08 BSC +2.77 0 D / 0 H

Stature	+4.87	Tall		
Strength	+2.75	Strong		
Body Depth	+2.93	Deep		
Dairy Form	+2.52	Open Rib		
Rump Angle	+0.71	Sloped		
Thurl Width	+3.66	Wide		
Rear Legs-Side View	+1.14	Sickle		
Rear Legs-Rear View	+1.81	Straight		
Foot Angle	+2.36	Steep		
Feet & Legs Score	+1.94	High		
F. Udder Attachment	+4.58	Strong		
Rear Udder Height	+4.34	High		
Rear Udder Width	+3.99	Wide		
Udder Cleft	+2.20	Strong		
Udder Depth	+4.12	Shallow		
Front Teat Placement	+2.03	Close		
Rear Teat Placement	+1.45	Close		
Teat Length	+0.11	Long		

DAM: CRASDALE DM HUNTER



CALVING, HEALTH, FERTILITY USDA - CDCB EVALUATION

DAUGHTER PREGNANCY RATE	+1.1	72%
PRODUCTIVE LIFE	+1.9	73%
FERTILITY INDEX	+0.8	
LIVABILITY	-2.2	67%
SOMATIC CELL SCORE	2.75	76%
GESTATION LENGTH	-3	
SIRE CALVING EASE	10.2%	62%
DAUGHTER CALVING EASE	5.5%	58%
NET MERIT \$	258	

GTPI
2200

AUSTRALIAN INDICES (08/2019)

BPI	216	67%
HWI	183	60%
TWI	257	65%
OVERALL TYPE	108	60%
MAMMARY	112	60%
DAUGHTER FERTILITY	107	52%
HEAT TOLERANCE	107	38%

\$22.00 Conv

\$50.00 Sexed **ULTRA4M**

Eclipse

Sexed**ULTRA4M**

MILIO

#1 PTAT BULL AVAILABLE 

Emilio x High Octane x Atwood 40% Black
HBN: HOAUS000HO2024975 NASIS: STGMILIO
BETA CASEIN: A1/A2 NAAB: 551H003708

Sire: Wilt Emilio Dam: Eclipse Octane Princess 13 VG86
MG Sire: Stantons High Octane MG Dam: Eclipse Atwood Princess 8 VG89

USDA - CDCB GENOMIC SIRE EVALUATION | AUGUST 2019 | DTRS 0 HERDS 0 | 78% REL

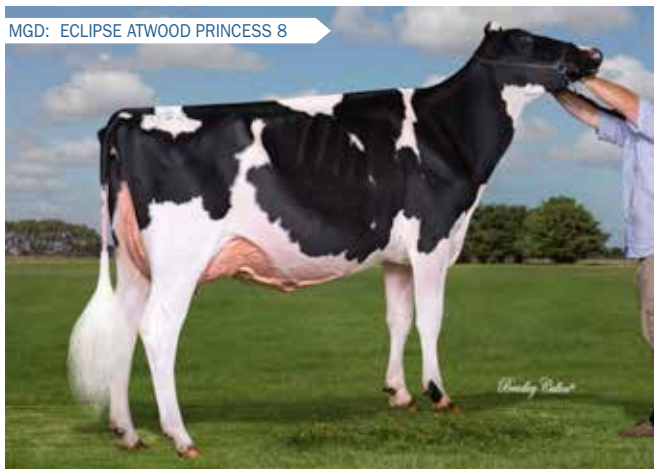
MILK LBS	FAT LBS	FAT %	PROT LBS	PROT %
216	56	0.18	10	0.01

USDA CDCB TYPE SUMMARY 08/2019

PTAT **+4.60** 73%R UDC+3.23 FLC+1.95 BSC +3.15 O D / O H

			-2	-1	0	1	2
Stature	+5.03	Tall					
Strength	+3.50	Strong					
Body Depth	+3.82	Deep					
Dairy Form	+3.28	Open Rib					
Rump Angle	-1.19	High Pins					
Thurl Width	+4.19	Wide					
Rear Legs-Side View	+1.21	Sickle					
Rear Legs-Rear View	+2.61	Straight					
Foot Angle	+2.84	Steep					
Feet & Legs Score	+2.82	High					
F. Udder Attachment	+4.54	Strong					
Rear Udder Height	+4.86	High					
Rear Udder Width	+4.47	Wide					
Udder Cleft	+2.71	Strong					
Udder Depth	+4.09	Shallow					
Front Teat Placement	+1.51	Close					
Rear Teat Placement	+1.62	Close					
Teat Length	-0.30	Short					

MGD: ECLIPSE ATWOOD PRINCESS 8



CALVING, HEALTH, FERTILITY USDA - CDCB EVALUATION

DAUGHTER PREGNANCY RATE	-3.5	75%
PRODUCTIVE LIFE	+0.3	72%
FERTILITY INDEX	-3.0	
LIVABILITY	-4.1	66%
SOMATIC CELL SCORE	2.75	74%
GESTATION LENGTH	-1	
SIRE CALVING EASE	9.2%	61%
DAUGHTER CALVING EASE	5.9%	55%
NET MERIT \$	257	

GTPI
2162

AUSTRALIAN INDICES (08/2019)

BPI	114	64%
HWI	89	57%
TWI	158	63%
OVERALL TYPE	106	54%
MAMMARY	110	54%
DAUGHTER FERTILITY	100	47%
HEAT TOLERANCE	107	38%

\$90.00 Sexed**ULTRA4M**

Did you know the success of the PRINCESS cow family?

Eclipse MILIO is currently the #1 PTAT sire in the world with no Doorman blood. MILIO is backed by one of Australia's prominent cow families the Princess' from Eclipse Holsteins.



Dam of Milio: Eclipse High Octane Princess 13 VG88 (MAX)

Eclipse High Octane Princess 13

Dam of MILIO

Classified VG88 MAX (94 Mamm)
1st Junior 2 @ 2018 Winter Fair



GDam of Milio: Eclipse Atwood Princess 8 VG89 (94 Mamm)

Eclipse Atwood Princess 8

Grand Dam of MILIO

Classified VG89 (94 Mammary)
Honorable mention All Australian 4 yr old.

Coomboona Answer To

PETE - PP

Answer x Powerball x Supersire

HBN: HOAUS000H02026898

BETA CASEIN: A1/A2

Also available FRESH SEXED (T&C apply)

STgen FRESH ULTRA4M



20% Black

NASIS: STGPETE

NAAB: 522H003779

Sire: Endco The Answer PO

MG Sire: View Home Powerball

Dam: Ms Blondin Pwball Peta

MG Dam: Butlerview Pixie Ss57453

USDA - CDCB GENOMIC SIRE EVALUATION | AUGUST 2019 | DTRS 0 HERDS 0 | 78% REL

MILK LBS	FAT LBS	FAT %	PROT LBS	PROT %
1666	65	0.01	62	0.04

USDA CDCB TYPE SUMMARY 08/2019

PTAT +1.49 75%R UDC+2.01 FLC+0.86 BSC +0.14 0 D / 0 H

			-2	-1	0	1	2
Stature	+1.23	Tall					
Strength	+0.35	Strong					
Body Depth	+0.14	Deep					
Dairy Form	+1.08	Open Rib					
Rump Angle	+0.85	Sloped					
Thurl Width	+0.62	Wide					
Rear Legs-Side View	-0.57	Posty					
Rear Legs-Rear View	+0.66	Straight					
Foot Angle	+0.88	Steep					
Feet & Legs Score	+1.14	High					
F. Udder Attachment	+1.70	Strong					
Rear Udder Height	+3.49	High					
Rear Udder Width	+3.21	Wide					
Udder Cleft	+0.51	Strong					
Udder Depth	+1.16	Shallow					
Front Teat Placement	+0.56	Close					
Rear Teat Placement	+0.57	Close					
Teat Length	-0.11	Short					

MGD: BUTLVIEW COLT PIXIE



Guye Holdings

SAMITE

Monterey x Mogul x Man o Man

HBN: HOAUS000H01926215

BETA CASEIN: A1/A2

Also available FRESH SEXED (T&C apply)

STgen FRESH ULTRA4M



30% Black

NASIS: CBSAMITE

NAAB: 224H004653

Sire: View Home Monterey

MG Sire: Mountfield Ssi Dcy Mogul

Dam: Guye Holdings Mogul Silk VG85

MG Dam: M-Gee O Silk VG86

USDA - CDCB GENOMIC SIRE EVALUATION | AUGUST 2019 | DTRS 0 HERDS 0 | 78% REL

MILK LBS	FAT LBS	FAT %	PROT LBS	PROT %
622	55	0.12	35	0.06

USDA CDCB TYPE SUMMARY 08/2019

PTAT +2.92 77%R UDC+2.92 FLC+1.91 BSC +0.24 0 D / 0 H

			-2	-1	0	1	2
Stature	+1.80	Tall					
Strength	+0.40	Strong					
Body Depth	+0.69	Deep					
Dairy Form	+1.65	Open Rib					
Rump Angle	-0.89	High Pins					
Thurl Width	+1.52	Wide					
Rear Legs-Side View	-0.42	Posty					
Rear Legs-Rear View	+1.83	Straight					
Foot Angle	+2.11	Steep					
Feet & Legs Score	+2.17	High					
F. Udder Attachment	+3.39	Strong					
Rear Udder Height	+3.77	High					
Rear Udder Width	+3.47	Wide					
Udder Cleft	+2.12	Strong					
Udder Depth	+2.98	Shallow					
Front Teat Placement	+2.06	Close					
Rear Teat Placement	+1.98	Close					
Teat Length	-0.97	Short					

SAMITES 2 FULL SISTERS



CALVING, HEALTH, FERTILITY USDA - CDCB EVALUATION

DAUGHTER PREGNANCY RATE	+0.0	73%
PRODUCTIVE LIFE	+3.8	75%
FERTILITY INDEX	+0.4	
LIVABILITY	+0.7	66%
SOMATIC CELL SCORE	3.13	76%
GESTATION LENGTH	-3	
SIRE CALVING EASE	5.9%	61%
DAUGHTER CALVING EASE	5.0%	58%
NET MERIT \$	666	

GTPI
2450

AUSTRALIAN INDICES (08/2019)

BPI	225	64%
HWI	213	56%
TWI	204	62%
OVERALL TYPE	100	50%
MAMMARY	105	50%
DAUGHTER FERTILITY	108	48%
HEAT TOLERANCE	99	38%

\$24.00 Conv

\$50.00 Sexed ULTRA4M

CALVING, HEALTH, FERTILITY USDA - CDCB EVALUATION

DAUGHTER PREGNANCY RATE	+1.5	76%
PRODUCTIVE LIFE	+4.6	76%
FERTILITY INDEX	+1.5	
LIVABILITY	+0.0	
SOMATIC CELL SCORE	2.80	77%
GESTATION LENGTH	-2	
SIRE CALVING EASE	4.6%	71%
DAUGHTER CALVING EASE	2.7%	68%
NET MERIT \$	650	

GTPI
2535

AUSTRALIAN INDICES (08/2019)

BPI	260	70%
HWI	227	63%
TWI	251	69%
OVERALL TYPE	101	66%
MAMMARY	108	66%
DAUGHTER FERTILITY	110	62%
HEAT TOLERANCE	99	38%

\$22.00 Conv

\$55.00 Sexed ULTRA4M

Vala Bandares

SHAYDON

Bandares x Silver x Supersire
HBN: HOAUS000HO2048940
BETA CASEIN: A1/A2

Also available FRESH SEXED (T&C apply)



90% Black
NASIS: STGS SHAYDON
NAAB: 551H003936

Sire: WaDel Yoder Bandares Dam: Coomboona Silver Sheena
MG Sire: Seagull Bay Silver MG Dam: Coomboona Supersire Shinita

USDA - CDCB GENOMIC SIRE EVALUATION | AUGUST 2019 | DTRS 0 HERDS 0 | 78% REL

MILK LBS	FAT LBS	FAT %	PROT LBS	PROT %
464	85	0.25	38	0.09

USDA CDCB TYPE SUMMARY 08/2019

PTAT +2.25 77%R UDC+2.64 FLC+0.91 BSC 0 D / 0 H

			-2	-1	0	1	2
Stature	+1.97	Tall					
Strength	+1.78	Strong					
Body Depth	+1.01	Deep					
Dairy Form	-0.04	Tight					
Rump Angle	+1.23	Sloped					
Thurl Width	+1.62	Wide					
Rear Legs-Side View	-0.75	Posty					
Rear Legs-Rear View	+1.64	Straight					
Foot Angle	+1.35	Steep					
Feet & Legs Score	+1.06	High					
F. Udder Attachment	+2.95	Strong					
Rear Udder Height	+3.57	High					
Rear Udder Width	+3.28	Wide					
Udder Cleft	+1.79	Strong					
Udder Depth	+2.82	Shallow					
Front Teat Placement	+2.13	Close					
Rear Teat Placement	+2.17	Close					
Teat Length	-0.91	Short					

GGDAM: PINE TREE MARTHA SHEEN



CALVING, HEALTH, FERTILITY USDA - CDCB EVALUATION

DAUGHTER PREGNANCY RATE	+0.0	
PRODUCTIVE LIFE	+4.6	
FERTILITY INDEX	+0.6	
LIVABILITY	+1.7	67%
SOMATIC CELL SCORE	2.90	
GESTATION LENGTH	-1	
SIRE CALVING EASE	8.7%	62%
DAUGHTER CALVING EASE	3.3%	60%
NET MERIT \$	709	

GTPI
2549

AUSTRALIAN INDICES (08/2019)

BPI	328	66%
HWI	274	59%
TWI	338	65%
OVERALL TYPE	105	57%
MAMMARY	108	57%
DAUGHTER FERTILITY	110	52%
HEAT TOLERANCE	97	38%

\$25.00 Conv

\$55.00 Sexed **ULTRA4M**

Vala King Royal

SHEAN

Kingroyal x Silver x Supersire
HBN: HOAUS000HO2048894
BETA CASEIN: A2/A2

Also available FRESH SEXED (T&C apply)



90% Black
NASIS: STGS SHEAN
NAAB: 551H003947

Sire: Plain Knoll Kingroyal Dam: Coomboona Silver Sheena
MG Sire: Seagull Bay Silver MG Dam: Coomboona Supersire Shinita

USDA - CDCB GENOMIC SIRE EVALUATION | AUGUST 2019 | DTRS 0 HERDS 0 | 78% REL

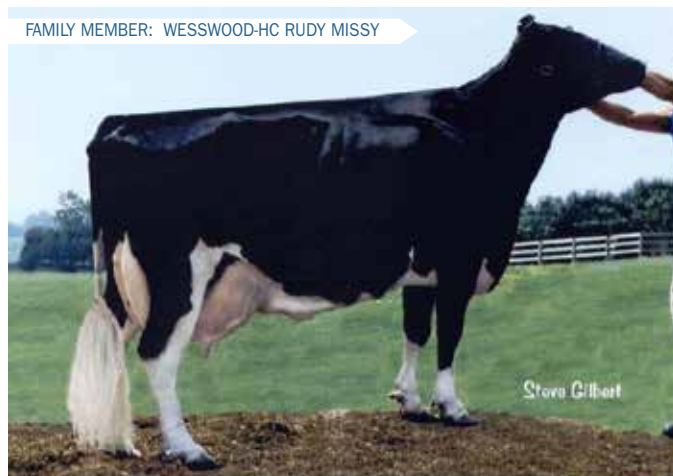
MILK LBS	FAT LBS	FAT %	PROT LBS	PROT %
774	107	0.28	50	0.10

USDA CDCB TYPE SUMMARY 08/2019

PTAT +2.96 76%R UDC+2.86 FLC+1.54 BSC 0 D / 0 H

			-2	-1	0	1	2
Stature	+2.28	Tall					
Strength	+1.14	Strong					
Body Depth	+1.68	Deep					
Dairy Form	+2.60	Open Rib					
Rump Angle	-0.79	High Pins					
Thurl Width	+1.62	Wide					
Rear Legs-Side View	+0.27	Sickle					
Rear Legs-Rear View	+1.80	Straight					
Foot Angle	+1.86	Steep					
Feet & Legs Score	+1.86	High					
F. Udder Attachment	+2.99	Strong					
Rear Udder Height	+4.45	High					
Rear Udder Width	+4.09	Wide					
Udder Cleft	+1.93	Strong					
Udder Depth	+2.15	Shallow					
Front Teat Placement	+1.57	Close					
Rear Teat Placement	+1.64	Close					
Teat Length	+0.33	Long					

FAMILY MEMBER: WESSWOOD-HC RUDY MISSY



CALVING, HEALTH, FERTILITY USDA - CDCB EVALUATION

DAUGHTER PREGNANCY RATE	-1.9	
PRODUCTIVE LIFE	+3.0	
FERTILITY INDEX	-1.2	
LIVABILITY	-0.7	68%
SOMATIC CELL SCORE	2.94	
GESTATION LENGTH	-3	
SIRE CALVING EASE	9.4%	62%
DAUGHTER CALVING EASE	5.3%	60%
NET MERIT \$	764	

GTPI
2618

AUSTRALIAN INDICES (08/2019)

BPI	306	67%
HWI	217	60%
TWI	314	65%
OVERALL TYPE	105	59%
MAMMARY	107	59%
DAUGHTER FERTILITY	105	54%
HEAT TOLERANCE	94	38%

\$22.00 Conv

\$55.00 Sexed **ULTRA4M**

High Country TYSON



Modesty x Supersire x Jose 40% Black
HBN: HOAUS0000002005191 NASIS: STGTYSON
BETA CASEIN: A1/A2 NAAB: 522H003725

Sire: Bacon Hill Pety Modesty Dam: ABS AUS Supersire Trixie VG86
MG Sire: Seagull Bay Supersire MG Dam: Lars-Acres Jose Trifle VG86

USDA - CDCB GENOMIC SIRE EVALUATION | AUGUST 2019 | DTRS 0 HERDS 0 | 78% REL

MILK LBS	FAT LBS	FAT %	PROT LBS	PROT %
1084	69	0.10	43	0.04

USDA CDCB TYPE SUMMARY 08/2019

PTAT +1.30 78%R UDC+1.54 FLC+0.83 BSC -0.58 0 D / 0 H

			-2	-1	0	1	2
Stature	+0.41	Tall					
Strength	-0.25	Frail					
Body Depth	-0.19	Shallow					
Dairy Form	+0.87	Open Rib					
Rump Angle	-0.09	High Pins					
Thurl Width	-0.42	Narrow					
Rear Legs-Side View	+0.76	Sickle					
Rear Legs-Rear View	+0.45	Straight					
Foot Angle	+0.23	Steep					
Feet & Legs Score	+1.01	High					
F. Udder Attachment	+1.78	Strong					
Rear Udder Height	+1.75	High					
Rear Udder Width	+1.61	Wide					
Udder Cleft	+0.49	Strong					
Udder Depth	+1.53	Shallow					
Front Teat Placement	+1.44	Close					
Rear Teat Placement	+1.10	Close					
Teat Length	-0.07	Short					

MGD: LARS ACRES JOSE TRIFLE



CALVING, HEALTH, FERTILITY USDA - CDCB EVALUATION

DAUGHTER PREGNANCY RATE	+0.5	76%
PRODUCTIVE LIFE	+5.4	75%
FERTILITY INDEX	+1.0	
LIVABILITY	+2.6	69%
SOMATIC CELL SCORE	3.07	78%
GESTATION LENGTH	-3	
SIRE CALVING EASE	6.8%	62%
DAUGHTER CALVING EASE	5.0%	61%
NET MERIT \$	688	

GTPI
2411

AUSTRALIAN INDICES (08/2019)

BPI	184	68%
HWI	159	61%
TWI	165	67%
OVERALL TYPE	100	61%
MAMMARY	104	61%
DAUGHTER FERTILITY	107	58%
HEAT TOLERANCE	97	38%

\$18.00 Conv

\$45.00 SexedULTRA 4M

SexedULTRA 4M™

Sexed Sorted Semen is a household name at Richard and Debbie Platts operation in Bega.

Platts partnership currently milk 720 cows, in a split calving herd.

“We have been using Fresh Sexed Semen for over 7 years now. In the last couple of years after the introduction of Sexed Ultra 4M we have also began using some Frozen Sexed Ultra 4M Semen on our herd to allow for more variety of sires.

Using Sexed Ultra 4M semen has allowed us to have surplus heifers and give us a 13th and sometimes 14th milk cheque. Along with making managemnet easier due to very little calving problems.

In our recent joining conducted with North East Genetics using Fresh Sexed Ultra 4M FONDOO in the 1st round of fixed time AI we received a very pleasing conception rate on cows of 47.7% on 200 milking cows.

Platts Partnership, Bega
Richard and Debbie Platts

ABBOTSFORD



Noble x Rubicon x Let it Snow

HBN: H0840003132353753 NASIS: STGABOTSFORD

BETA CASEIN: A2/A2

NAAB: 551H003753

Sire: Mr Spring Noble
MG Sire: Edg RubiconDam: St Alana Rub 54761
MG Dam: Edg Lacy Snow 2114

USDA - CDCB GENOMIC SIRE EVALUATION | AUGUST 2019 | DTRS 0 HERDS 0 | 78% REL

MILK LBS	FAT LBS	FAT %	PROT LBS	PROT %
1807	98	0.11	69	0.05

USDA CDCB TYPE SUMMARY 08/2019

PTAT +2.12 75%R UDC+2.27 FLC+1.30 BSC -0.37 0 D / 0 H

			-2	-1	0	1	2
Stature	+0.45	Tall					
Strength	+0.27	Strong					
Body Depth	+0.26	Deep					
Dairy Form	+1.84	Open Rib					
Rump Angle	-1.36	High Pins					
Thurl Width	+1.04	Wide					
Rear Legs-Side View	+0.32	Sickle					
Rear Legs-Rear View	+1.54	Straight					
Foot Angle	+0.95	Steep					
Feet & Legs Score	+1.22	High					
F. Udder Attachment	+2.00	Strong					
Rear Udder Height	+3.27	High					
Rear Udder Width	+3.01	Wide					
Udder Cleft	+1.68	Strong					
Udder Depth	+1.15	Shallow					
Front Teat Placement	+2.06	Close					
Rear Teat Placement	+1.96	Close					
Teat Length	-1.00	Short					

MGD: KELLERCREST MANONMAN LACY



ALTITUDE RED

Arvis x McCutchen x Destry

HBN: H0840003128013348 NASIS: STGALTITUDE

BETA CASEIN: A1/A2

NAAB: 551H003617

Sire: Mr EDG Arvis
MG Sire: De-Su Bkm MccutchenDam: Farnear-Tbr Aria Adler EX95
MG Dam: Ms Apples Aria EX92

USDA - CDCB GENOMIC SIRE EVALUATION | APRIL 2019 | DTRS 0 HERDS 0 | 78% REL

MILK LBS	FAT LBS	FAT %	PROT LBS	PROT %
373	38	0.09	25	0.05

USDA CDCB TYPE SUMMARY 08/2019

PTAT +3.79 78%R UDC+3.45 FLC+2.26 BSC +2.47 0 D / 0 H

			-2	-1	0	1	2
Stature	+4.23	Tall					
Strength	+2.36	Strong					
Body Depth	+2.29	Deep					
Dairy Form	+1.58	Open Rib					
Rump Angle	+0.76	Sloped					
Thurl Width	+2.13	Wide					
Rear Legs-Side View	-0.78	Posty					
Rear Legs-Rear View	+2.93	Straight					
Foot Angle	+3.49	Steep					
Feet & Legs Score	+2.82	High					
F. Udder Attachment	+4.36	Strong					
Rear Udder Height	+5.07	High					
Rear Udder Width	+4.66	Wide					
Udder Cleft	+2.68	Strong					
Udder Depth	+3.78	Shallow					
Front Teat Placement	+2.23	Close					
Rear Teat Placement	+2.12	Close					
Teat Length	+0.04	Long					

DAM: FARNEAR TBR ARIA ADLER EX95



CALVING, HEALTH, FERTILITY USDA - CDCB EVALUATION

DAUGHTER PREGNANCY RATE	+0.7	72%
PRODUCTIVE LIFE	+5.7	73%
FERTILITY INDEX	+1.2	
LIVABILITY	+2.0	67%
SOMATIC CELL SCORE	2.87	74%
GESTATION LENGTH	-2	
SIRE CALVING EASE	7.2%	61%
DAUGHTER CALVING EASE	4.2%	56%
NET MERIT \$	933	

GTPI
2786

AUSTRALIAN INDICES (08/2019)

BPI	240	65%
HWI	200	58%
TWI	219	64%
OVERALL TYPE	100	56%
MAMMARY	106	56%
DAUGHTER FERTILITY	106	51%
HEAT TOLERANCE	89	38%



EcoFeed 108

\$40.00 Conv

\$90.00 SexedULTRA4M™

CALVING, HEALTH, FERTILITY USDA - CDCB EVALUATION

DAUGHTER PREGNANCY RATE	-0.8	74%
PRODUCTIVE LIFE	+1.1	74%
FERTILITY INDEX	-0.7	
LIVABILITY	-3.0	68%
SOMATIC CELL SCORE	2.91	77%
GESTATION LENGTH	+0	
SIRE CALVING EASE	8.8%	71%
DAUGHTER CALVING EASE	5.0%	67%
NET MERIT \$	329	

GTPI
2273

AUSTRALIAN INDICES (08/2019)

BPI	176	66%
HWI	146	59%
TWI	208	65%
OVERALL TYPE	106	58%
MAMMARY	111	58%
DAUGHTER FERTILITY	109	53%
HEAT TOLERANCE	106	38%

\$60.00 SexedULTRA4M™

APPLEFREE RED

Revival Red x Delta x Sympatico

HBN: HO84000313253140

NASIS: STGAPPLEFREE

BETA CASEIN: A2/A2

NAAB: 551H003710

Sire: Vogue Revival Red
MG Sire: Mr Mogul Delta 1427Dam: Lismore Delta Anna VG87
MG Dam: Curr-Vale Sym Avelyn

USDA - CDCB GENOMIC SIRE EVALUATION | AUGUST 2019 | DTRS 0 HERDS 0 | 78% REL

MILK LBS	FAT LBS	FAT %	PROT LBS	PROT %
950	77	0.15	35	0.02

USDA CDCB TYPE SUMMARY 08/2019

PTAT +2.62 75%R UDC+2.36 FLC+1.50 BSC +1.07 0 D / 0 H

			-2	-1	0	1	2
Stature	+1.52	Tall					
Strength	+1.56	Strong					
Body Depth	+1.42	Deep					
Dairy Form	+1.43	Open Rib					
Rump Angle	-0.25	High Pins					
Thurl Width	+0.90	Wide					
Rear Legs-Side View	+0.55	Sickle					
Rear Legs-Rear View	+1.64	Straight					
Foot Angle	+1.54	Steep					
Feet & Legs Score	+1.68	High					
F. Udder Attachment	+3.27	Strong					
Rear Udder Height	+3.04	High					
Rear Udder Width	+2.80	Wide					
Udder Cleft	+1.13	Strong					
Udder Depth	+2.14	Shallow					
Front Teat Placement	+2.28	Close					
Rear Teat Placement	+1.44	Close					
Teat Length	-0.84	Short					

ST GEN RR APPLEFREE RED



CALVING, HEALTH, FERTILITY USDA - CDCB EVALUATION

DAUGHTER PREGNANCY RATE	+0.5	72%
PRODUCTIVE LIFE	+4.7	72%
FERTILITY INDEX	+0.6	
LIVABILITY	+1.9	68%
SOMATIC CELL SCORE	2.70	74%
GESTATION LENGTH	-2	
SIRE CALVING EASE	5.5%	61%
DAUGHTER CALVING EASE	3.8%	55%
NET MERIT \$	696	

GTPI
2534

AUSTRALIAN INDICES (08/2019)

BPI	280	62%
HWI	242	54%
TWI	267	60%
OVERALL TYPE	102	48%
MAMMARY	104	48%
DAUGHTER FERTILITY	110	44%
HEAT TOLERANCE	102	38%

\$60.00 Sexed**ULTRA**4M™

APPLEWAY RC

Byway x Integral x Regiment Red

HBN: HO840003141240919

NASIS: STGAPPLEWAY

BETA CASEIN: A1/A2

NAAB: 551H003613

Sire: Oh River Syc Byway
MG Sire: Blondin IntegralDam: Ms Apple Anara Red VG86
MG Dam: KHW Regiment Apple Red EX96

USDA - CDCB GENOMIC SIRE EVALUATION | AUGUST 2019 | DTRS 0 HERDS 0 | 78% REL

MILK LBS	FAT LBS	FAT %	PROT LBS	PROT %
180	23	0.06	13	0.03

USDA CDCB TYPE SUMMARY 08/2019

PTAT +3.43 78%R UDC+3.24 FLC+2.05 BSC +2.52 0 D / 0 H

			-2	-1	0	1	2
Stature	+3.73	Tall					
Strength	+2.28	Strong					
Body Depth	+2.04	Deep					
Dairy Form	+0.99	Open Rib					
Rump Angle	-0.12	High Pins					
Thurl Width	+1.88	Wide					
Rear Legs-Side View	-0.95	Posty					
Rear Legs-Rear View	+2.47	Straight					
Foot Angle	+2.55	Steep					
Feet & Legs Score	+2.66	High					
F. Udder Attachment	+4.38	Strong					
Rear Udder Height	+4.38	High					
Rear Udder Width	+4.03	Wide					
Udder Cleft	+2.61	Strong					
Udder Depth	+3.87	Shallow					
Front Teat Placement	+1.86	Close					
Rear Teat Placement	+2.05	Close					
Teat Length	-0.12	Short					

DAM: KHW REGIMENT APPLE RED



CALVING, HEALTH, FERTILITY USDA - CDCB EVALUATION

DAUGHTER PREGNANCY RATE	+0.3	76%
PRODUCTIVE LIFE	+1.8	76%
FERTILITY INDEX	+0.4	
LIVABILITY	-1.7	69%
SOMATIC CELL SCORE	2.93	77%
GESTATION LENGTH	+0	
SIRE CALVING EASE	8.5%	69%
DAUGHTER CALVING EASE	5.8%	68%
NET MERIT \$	264	

GTPI
2171


EcoFeed 101

\$60.00 Sexed**ULTRA**4M™



Healthier cows

...DRIVES HERD WELFARE



NEED LESS MEDICINE,
LEADING TO REDUCED DRUG
AND HORMONE USE.

What single trait has the highest correlation with the health of your cows?

DAUGHTER PREGNANCY RATE (DPR)

Cows must be healthy to become pregnant. To conceive quickly after calving, a cow cannot have metritis, milk fever, DA, RP, ketosis or other illnesses.

Name	A2A2	TPI	NMS	MILK	SCS	PL	DPR	LIV	GL	FERT I	PTAT	UDC	SCE
Lancaster		2441	674	561	2.82	6.5	4.8	3.9	-1	4.3	0.81	1.26	5.3
Redrock	A2A2	2672	752	1444	2.65	7.2	3.5	1.6	-2	3.3	2.37	2.79	7.3
Lumina		2780	965	1033	2.59	9.3	3.3	5.4	-0.5	3.6	1.56	2.24	6.0
Czar	A2A2	2815	878	1336	2.57	7.8	3.2	3.5	-2.7	3.6	2.54	3.39	6.8
Tacoma		2787	917	1329	2.48	8.3	3.1	2.6	-2.2	3.4	1.45	2.47	7.8
Metz	A2A2	2824	950	1246	2.66	9.0	3.0	4.1	-0.6	3.1	1.97	2.18	6.8
Blunder		2482	677	1548	2.7	5.9	2.8	1.5	-0.6	2.6	1.23	1.48	6.7
Dedicate	A2A2	2828	994	1445	2.71	8.6	2.4	4.4	-0.2	2.8	1.69	2.43	6.6
Imperial	A2A2	2864	991	1528	2.62	8.2	2.4	4.6	-1	2.9	1.92	2.6	7.9
Irvine	A2A2	2823	947	2047	2.77	7.2	2.3	3.3	-1.4	2.9	1.91	2.72	8.5
Ledoux	A2A2	2509	681	874	2.87	5.5	2.3	2.5	-1.3	2.4	1.92	2.39	5.4
Tampa	A2A2	2868	1017	2229	2.65	9.1	2.3	4.4	-0.1	2.7	1.62	1.88	6.5
Dinero		2792	1025	1019	2.45	9.5	2.2	6.1	-3.1	2.2	0.97	2.36	6.3
Dubai	A2A2	2853	1008	1357	2.69	8.5	2.1	5.7	-2.3	2.4	1.89	2.48	7.5
Vince		2821	949	2117	2.73	8.6	2.1	3.6	0.1	3.0	1.88	1.71	6.0
Cursor		2592	866	1560	2.66	7.5	2.0	2.7	-3	1.6	0.44	0.53	6.6
Verde		2744	894	1217	2.53	7.7	1.9	3.5	-0.6	2.3	1.91	2.85	6.9
Charl	A2A2	2805	1004	1777	2.79	7.4	1.6	2.6	-2.7	2.4	1.62	1.82	6.3
Nashville	A2A2	2897	1057	2124	2.69	8.8	1.6	4.3	0.4	2.0	1.55	1.54	7.4
Twist	A2A2	2060	427	173	2.99	2.5	1.6	2.7	1.0	1.1	0.39	-1.02	8.0
Samite		2535	650	622	2.80	4.6	1.5	0.0	-2.0	1.5	2.92	2.92	4.6
Delta-Chance		2617	789	852	2.89	5.0	1.4	1.3	-0.6	1.9	2.18	2.39	7.0
Powerful-PP*RC	A2A2	2451	658	1129	2.87	5.5	1.4	3	-1.2	1.8	1.48	1.71	6.6
Revival-Red		2415	695	150	2.68	5.2	1.4	3.2	-1.3	1.1	1.11	1.57	5.5
Lego	A2A2	2453	648	718	2.79	3.6	1.3	-0.2	-0.6	1.4	1.47	1.77	7.3
Supershot		2463	675	2116	2.63	6.2	1.3	2	-4.3	0.9	1	1	6.6
Tampico		2762	889	1338	2.76	6.5	1.3	3.5	-1.3	1.6	2.46	2.99	9.3
Jolt		2635	844	1124	2.69	7.6	1.2	2.6	-0.1	1.8	1.83	2.16	5.5
Jumpstart		2797	1001	1675	2.75	8.8	1.2	4.4	0.2	1.8	1.46	1.7	5.0
Contender	A2A2	2505	649	921	2.44	5.6	1.1	1.6	-1.3	1.3	2.16	1.62	7.3
Mitchell		2764	814	1307	2.62	5.2	1.1	2	-2	1.6	3.19	2.83	7.0

Mr Frazzled



ARISTOCRAT

Frazzled x Monterey x Mogul

70% Black

HBN: HO840003142041200

NASIS: STGARISTCRAT

BETA CASEIN: A1/A2

NAAB: 551H003701

Sire: Melarry JoSuper Frazzled
MG Sire: View Home MontereyDam: Al-Lew Monterey Ashley
MG Dam: Al-Lew Mgl Astute 1207 VG88

USDA - CDCB GENOMIC SIRE EVALUATION | AUGUST 2019 | DTRS 0 HERDS 0 | 78% REL

MILK LBS	FAT LBS	FAT %	PROT LBS	PROT %
1605	89	0.10	58	0.03

USDA CDCB TYPE SUMMARY 08/2019

PTAT +2.67 78%R UDC+2.87 FLC+1.32 BSC +0.89 0 D / 0 H

			-2	-1	0	1	2
Stature	+1.91	Tall					
Strength	+0.89	Strong					
Body Depth	+0.64	Deep					
Dairy Form	+0.92	Open Rib					
Rump Angle	+0.16	Sloped					
Thurl Width	+1.11	Wide					
Rear Legs-Side View	+0.19	Sickle					
Rear Legs-Rear View	+1.45	Straight					
Foot Angle	+1.58	Steep					
Feet & Legs Score	+1.61	High					
F. Udder Attachment	+3.51	Strong					
Rear Udder Height	+3.55	High					
Rear Udder Width	+3.27	Wide					
Udder Cleft	+2.28	Strong					
Udder Depth	+3.19	Shallow					
Front Teat Placement	+2.23	Close					
Rear Teat Placement	+2.35	Close					
Teat Length	-1.17	Short					

DAM: AL LEW MONTEREY ASHLEY



Edg Delta



B52

Delta x Bob x Numero Uno

HBN: HO840003126776429

NASIS: STGB52

BETA CASEIN: A2/A2

NAAB: 551H003421

Sire: Mr Mogul Delta 1427
MG Sire: Roylane Bookem BobDam: Edg Cp Bob 57351 VG85
MG Dam: Larcrest Centerpiece VG86

USDA - CDCB GENOMIC SIRE EVALUATION | AUGUST 2019 | DTRS 0 HERDS 0 | 78% REL

MILK LBS	FAT LBS	FAT %	PROT LBS	PROT %
475	84	0.24	42	0.10

USDA CDCB TYPE SUMMARY 08/2019

PTAT +2.43 79%R UDC+2.53 FLC+1.35 BSC +0.16 0 D / 0 H

			-2	-1	0	1	2
Stature	+1.93	Tall					
Strength	+0.40	Strong					
Body Depth	+0.68	Deep					
Dairy Form	+2.02	Open Rib					
Rump Angle	+0.78	Sloped					
Thurl Width	+1.88	Wide					
Rear Legs-Side View	-0.12	Posty					
Rear Legs-Rear View	+1.24	Straight					
Foot Angle	+2.19	Steep					
Feet & Legs Score	+1.64	High					
F. Udder Attachment	+3.04	Strong					
Rear Udder Height	+3.66	High					
Rear Udder Width	+3.37	Wide					
Udder Cleft	+1.28	Strong					
Udder Depth	+2.33	Shallow					
Front Teat Placement	+1.50	Close					
Rear Teat Placement	+1.47	Close					
Teat Length	-0.86	Short					

MGGS: LARCREST CRIMSON



CALVING, HEALTH, FERTILITY USDA - CDCB EVALUATION

DAUGHTER PREGNANCY RATE	+0.3	73%
PRODUCTIVE LIFE	+7.4	74%
FERTILITY INDEX	+0.7	
LIVABILITY	+3.4	68%
SOMATIC CELL SCORE	2.61	71%
GESTATION LENGTH	-2	
SIRE CALVING EASE	6.8%	63%
DAUGHTER CALVING EASE	3.2%	61%
NET MERIT \$	925	

GTPI
2800

AUSTRALIAN INDICES (08/2019)

BPI	305	66%
HWI	263	59%
TWI	297	65%
OVERALL TYPE	101	58%
MAMMARY	105	58%
DAUGHTER FERTILITY	107	52%
HEAT TOLERANCE	95	38%

\$80.00 SexedULTRA4M

CALVING, HEALTH, FERTILITY USDA - CDCB EVALUATION

DAUGHTER PREGNANCY RATE	+0.9	76%
PRODUCTIVE LIFE	+4.6	76%
FERTILITY INDEX	+1.3	
LIVABILITY	+1.3	70%
SOMATIC CELL SCORE	2.70	78%
GESTATION LENGTH	-1	
SIRE CALVING EASE	7.5%	89%
DAUGHTER CALVING EASE	4.0%	68%
NET MERIT \$	775	

GTPI
2635

AUSTRALIAN INDICES (08/2019)

BPI	306	67%
HWI	234	60%
TWI	284	65%
OVERALL TYPE	101	58%
MAMMARY	104	58%
DAUGHTER FERTILITY	107	55%
HEAT TOLERANCE	100	38%



EcoFeed 100

\$28.00 Conv

\$55.00 SexedULTRA4M



DELTA BETA 241

Delta x Numero Uno x Snowman 60% Black
HBN: H0840003125993700 NASIS: STGBETA
BETA CASEIN: A2/A2 NAAB: 151H003244

Sire: Mr Mogul Delta 1427 Dam: Edg Lorette Uno 2198 VG88
MG Sire: Amighetti Numero Uno MG Dam: Velthuis Snowman Lorette VG86

USDA - CDCB GENOMIC SIRE EVALUATION | AUGUST 2019 | DTRS 0 HERDS 0 | 78% REL

MILK LBS	FAT LBS	FAT %	PROT LBS	PROT %
1126	80	0.14	49	0.05

USDA CDCB TYPE SUMMARY 08/2019

PTAT +2.49 80%R UDC+2.95 FLC+0.81 BSC -0.38 0 D / 0 H

Stature	+1.26	Tall			
Strength	+0.02	Strong			
Body Depth	+0.41	Deep			
Dairy Form	+2.04	Open Rib			
Rump Angle	-0.11	High Pins			
Thurl Width	+1.40	Wide			
Rear Legs-Side View	+0.30	Sickle			
Rear Legs-Rear View	+0.40	Straight			
Foot Angle	+1.58	Steep			
Feet & Legs Score	+1.07	High			
F. Udder Attachment	+2.90	Strong			
Rear Udder Height	+3.91	High			
Rear Udder Width	+3.60	Wide			
Udder Cleft	+2.89	Strong			
Udder Depth	+2.36	Shallow			
Front Teat Placement	+2.36	Close			
Rear Teat Placement	+2.73	Close			
Teat Length	-1.05	Short			

BILL

Balisto x Epic x Goldwyn 80% Black
HBN: H0DEU0000538281293 NASIS: CBBILL
BETA CASEIN: A2/A2 NAAB: 224H003810

Sire: De-Su 11236 Balisto Dam: HFP Lucy Lu 63 VG85
MG Sire: Generations Epic MG Dam: OWN Gold Lucile VG89

DATAGENE GENOMIC SIRE EVALUATION | AUGUST 2019 | DTRS 0 HERDS 0 | 78% REL

MILK Ltrs	FAT kgs	FAT %	PROT kgs	PROT %
131	13	0.10	22	0.34

AUSTRALIAN INDICIES 08/2019 0 D / 0 H

OVERALL TYPE	103	MAMMARY SYSTEM	99
STATURE	103	UDDER DEPTH	107
BONE QUALITY	101	FORE ATTACHMENT	103
LOIN STRENGTH	100	REAR ATTACH HEIGHT	101
ANGULARITY	98	REAR ATTACH WIDTH	95
MUZZLE WIDTH	98	CENTRE LIGAMENT	99
BODY DEPTH	100	TEAT PLACE FORE	99
CHEST WIDTH	101	TEAT PLACE REAR	91
PIN SET	95	UDDER TEXTURE	98
FOOT ANGLE	106	TEAT LENGTH	100
REAR SET	95		
REAR SET REAR VIEW	99		

DAM: EDG LORETTE UNO 2198



MGD: OWN GOLD LUCILE VG89



CALVING, HEALTH, FERTILITY USDA - CDCB EVALUATION

DAUGHTER PREGNANCY RATE	+0.3	76%
PRODUCTIVE LIFE	+5.9	78%
FERTILITY INDEX	+0.8	
LIVABILITY	+1.5	73%
SOMATIC CELL SCORE	2.74	78%
GESTATION LENGTH	+1	
SIRE CALVING EASE	6.1%	92%
DAUGHTER CALVING EASE	5.2%	69%
NET MERIT \$	803	

GTPI
2640

AUSTRALIAN INDICIES (08/2019)

BPI	270	68%
HWI	233	61%
TWI	269	67%
OVERALL TYPE	102	62%
MAMMARY	109	62%
DAUGHTER FERTILITY	106	59%
HEAT TOLERANCE	98	38%

\$20.00 Conv

AUSTRALIAN INDICIES (08/2019)

BPI	264	70%
HWI	198	66%
TWI	261	70%
OVERALL TYPE	103	78%
MAMMARY	99	78%
DAUGHTER FERTILITY	103	62%
HEAT TOLERANCE	95	38%

BPI
264

USDA CDCB EVALUATION (08/2019)

DAUGHTER PREGNANCY RATE	+0.1	75%
PRODUCTIVE LIFE	+5.2	86%
FERTILITY INDEX	+0.3	
LIVABILITY	+0.8	78%
SOMATIC CELL SCORE	2.42	88%
GESTATION LENGTH	-2	
SIRE CALVING EASE	5.2%	71%
DAUGHTER CALVING EASE	4.3%	
NET MERIT \$	596	

\$20.00 Conv

\$50.00 SexedULTRA4M

BLANCO

Altaaware x Colby x Judd

15% Black

HBN: HOUSA000144046155

NASIS: STGBLANCO

BETA CASEIN: A1/A2

NAAB: 551H003574

Sire: No-Fla Altaaware
MG Sire: Solid-Gold ColbyDam: Slick-Gator Zoe
MG Dam: H0840003001044710

USDA - CDCB GENOMIC SIRE EVALUATION | AUGUST 2019 | DTRS 0 HERDS 0 | 78% REL

MILK LBS	FAT LBS	FAT %	PROT LBS	PROT %
194	23	0.06	13	0.03

USDA CDCB TYPE SUMMARY 08/2019

PTAT +0.27 74%R UDC+1.05 FLC-0.15 BSC +0.61 0 D / 0 H

			-2	-1	0	1	2
Stature	+0.63	Tall					
Strength	-0.09	Frail					
Body Depth	-0.89	Shallow					
Dairy Form	-0.96	Tight					
Rump Angle	+1.48	Sloped					
Thurl Width	+0.86	Wide					
Rear Legs-Side View	-0.31	Posty					
Rear Legs-Rear View	-0.48	Hock In					
Foot Angle	+0.34	Steep					
Feet & Legs Score	+0.06	High					
F. Udder Attachment	+1.29	Strong					
Rear Udder Height	+1.40	High					
Rear Udder Width	+1.29	Wide					
Udder Cleft	-0.10	Weak					
Udder Depth	+1.60	Shallow					
Front Teat Placement	-0.40	Wide					
Rear Teat Placement	-0.28	Wide					
Teat Length	-0.04	Short					

SLICK GATOR BLANCO



Frank Robinson

CALVING, HEALTH, FERTILITY USDA - CDCB EVALUATION

DAUGHTER PREGNANCY RATE	+1.0	74%
PRODUCTIVE LIFE	+3.8	75%
FERTILITY INDEX	+0.5	
LIVABILITY	+3.7	68%
SOMATIC CELL SCORE	2.83	77%
GESTATION LENGTH	+0	
SIRE CALVING EASE	7.6%	61%
DAUGHTER CALVING EASE	5.7%	58%
NET MERIT \$	333	

GTPI
1974

EcoFeed 101

\$30.00 Conv

\$50.00 Sexed**ULTRA**4M

BLUNDER 3520

Supershot x Numero Uno x Super

90% Black

HBN: H0840003129016370

NASIS: STGBLUNDER

BETA CASEIN: A1/A2

NAAB: 151H003159

Sire: Cogent Supershot
MG Sire: Amighetti Numero UnoDam: Ri-Val-Re Num Uno Bee
MG Dam: Ri-Val-Re Super Nadine VG87

USDA - CDCB GENOMIC SIRE EVALUATION | AUGUST 2019 | DTRS 0 HERDS 0 | 78% REL

MILK LBS	FAT LBS	FAT %	PROT LBS	PROT %
1548	50	-0.03	56	0.03

USDA CDCB TYPE SUMMARY 08/2019

PTAT +1.23 80%R UDC+1.48 FLC-0.21 BSC +0.50 0 D / 0 H

			-2	-1	0	1	2
Stature	+1.31	Tall					
Strength	+0.55	Strong					
Body Depth	+0.07	Deep					
Dairy Form	+0.59	Open Rib					
Rump Angle	+0.91	Sloped					
Thurl Width	+0.43	Wide					
Rear Legs-Side View	+1.13	Sickle					
Rear Legs-Rear View	-0.64	Hock In					
Foot Angle	+0.21	Steep					
Feet & Legs Score	+0.24	High					
F. Udder Attachment	+2.23	Strong					
Rear Udder Height	+2.14	High					
Rear Udder Width	+1.97	Wide					
Udder Cleft	+1.20	Strong					
Udder Depth	+1.46	Shallow					
Front Teat Placement	+0.36	Close					
Rear Teat Placement	+0.38	Close					
Teat Length	+1.42	Long					

STANTONS BLUNDER 3520 -ET



Frank Robinson

CALVING, HEALTH, FERTILITY USDA - CDCB EVALUATION

DAUGHTER PREGNANCY RATE	+2.8	77%
PRODUCTIVE LIFE	+5.9	79%
FERTILITY INDEX	+2.6	
LIVABILITY	+1.5	72%
SOMATIC CELL SCORE	2.70	81%
GESTATION LENGTH	-1	
SIRE CALVING EASE	6.7%	95%
DAUGHTER CALVING EASE	4.6%	68%
NET MERIT \$	677	

GTPI
2482

AUSTRALIAN INDICES (08/2019)

BPI	290	69%
HWI	273	62%
TWI	284	68%
OVERALL TYPE	102	64%
MAMMARY	105	64%
DAUGHTER FERTILITY	111	60%
HEAT TOLERANCE	96	38%

\$20.00 Conv

\$48.00 Sexed**ULTRA**4M

A2A2

A dairy protein that generates interest

Beta-casein accounts for 30% of protein contained in milk

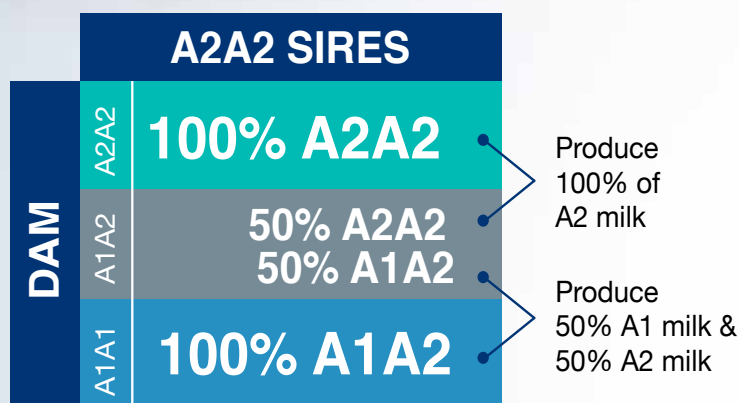
and occurs in two genetic variants: A1 and A2. Some scientific studies suggest the A1 variant may have a negative impact on human health, but milk from A2 positive cattle is linked to potential health benefits. The most desirable form of beta-casein is designated A2A2.

A2 milk is selling at a premium in a few markets around the world and its popularity is growing.

Genetic selection to generate dairy cattle that produce only the beta-casein A2A2 variant is potentially profitable.



A2's transmission pattern



Holstein Canada, 2015

A2A2 SIRES OFFERED IN SexedULTRA4M SEMEN

How to convert to 100% A2 milk herd?

- ✓ Genomic test the herd
- ✓ Prioritize A2A2 females as dams for the next generation and use sex semen
- ✓ Use exclusively A2A2 bulls

Direct impact of the A1 variant on human health has yet to be measured. Conclusions on the subject do not reach a consensus in the scientific community.

Name	A2A2	TPI	DPR	PTAT
Bill	A2A2	2300	0.1	1.52
Abbotsford	A2A2	2786	0.7	2.12
Applefree-Red	A2A2	2534	0.5	2.62
B52	A2A2	2635	0.9	2.43
Bold	A2A2	2519	-0.4	1.72
Charl	A2A2	2805	1.6	1.62
Contender	A2A2	2505	1.1	2.16
Czar	A2A2	2815	3.2	2.54
Dedicate	A2A2	2828	2.4	1.69
Delta-Beta	A2A2	2640	0.3	2.49
Delta-Eta	A2A2	2611	0.4	2.14
Dubai	A2A2	2853	2.1	1.89
Eta	A2A2	2611	0.4	2.14
Evolve P	A2A2	2506	-0.2	1.94
Fon Doo	A2A2	2750	0	2.45
Hondo	A2A2	2452	0.8	1.83
Imperial	A2A2	2864	2.4	1.92
Irvine	A2A2	2823	2.3	1.91
Kings Reserve	A2A2	2492	0.1	1.78

Name	A2A2	TPI	DPR	PTAT
Ledoux	A2A2	2509	2.3	1.92
Lego	A2A2	2453	1.3	1.47
Madden	A2A2	2475	0.0	2.35
Metz	A2A2	2824	3.0	1.97
Nashville	A2A2	2897	1.6	1.55
Nightlife	A2A2	2545	0.3	1.84
No Can Do	A2A2	2652	0.7	2.35
Popeye	A2A2	2397	0.9	1.71
Powerful-PP*RC	A2A2	2451	1.4	1.48
Redrock	A2A2	2672	3.5	2.37
Rocco	A2A2	2770	0.3	2.14
Roux	A2A2	2835	0.6	1.33
Rubi-Fire	A2A2	2551	0.1	1.86
Rubi-Haze	A2A2	2593	0.9	2.00
Shean	A2A2	2618	-1.9	2.96
Supreme	A2A2	2497	-1.3	1.59
Tampa	A2A2	2868	2.3	1.62
Twist	A2A2	2060	1.6	0.39
Watson	A2A2	2702	0.0	0.93

A2A2 *A dairy protein that generates interest*



CECIL

Superhero x Main Event x Supersire 50% Black
 HBN: HOCAN000012510848 NASIS: CBCECIL
BETA CASEIN: A1/A2 NAAB: 522H005135

Sire: Endco Superhero Dam: Murrayholm Main Event Ceci VG87
 MG Sire: Stantons Main Event MG Dam: Larcrest Couscous VG86

USDA - CDCB GENOMIC SIRE EVALUATION | AUGUST 2019 | DTRS 0 HERDS 0 | 78% REL

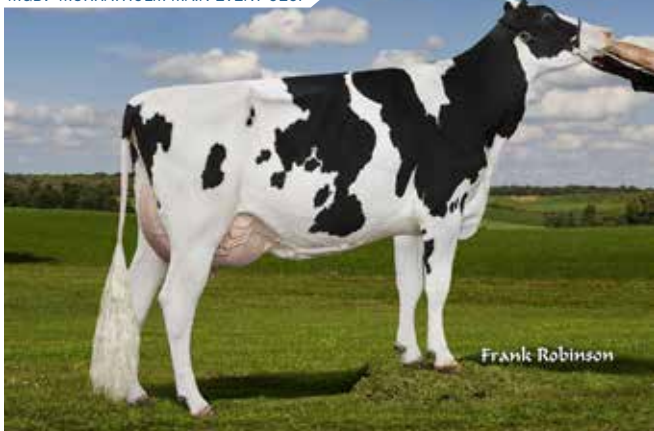
MILK LBS	FAT LBS	FAT %	PROT LBS	PROT %
1225	71	0.09	54	0.06

USDA CDCB TYPE SUMMARY 08/2019

PTAT +1.69 77%R UDC+1.84 FLC+0.57 BSC +0.37 0 D / 0 H

			-2	-1	0	1	2
Stature	+0.94	Tall					
Strength	+0.70	Strong					
Body Depth	+0.31	Deep					
Dairy Form	+1.02	Open Rib					
Rump Angle	+0.26	Sloped					
Thurl Width	+0.61	Wide					
Rear Legs-Side View	+0.47	Sickle					
Rear Legs-Rear View	+0.51	Straight					
Foot Angle	+0.17	Steep					
Feet & Legs Score	+0.82	High					
F. Udder Attachment	+2.13	Strong					
Rear Udder Height	+2.70	High					
Rear Udder Width	+2.48	Wide					
Udder Cleft	+1.03	Strong					
Udder Depth	+1.37	Shallow					
Front Teat Placement	+0.52	Close					
Rear Teat Placement	+0.59	Close					
Teat Length	-0.78	Short					

MGD: MURRAYHOLM MAIN EVENT CECI



CALVING, HEALTH, FERTILITY USDA - CDCB EVALUATION

DAUGHTER PREGNANCY RATE	+1.0	74%
PRODUCTIVE LIFE	+5.3	74%
FERTILITY INDEX	+1.2	
LIVABILITY	+0.6	68%
SOMATIC CELL SCORE	2.83	77%
GESTATION LENGTH	-3	
SIRE CALVING EASE	6.9%	63%
DAUGHTER CALVING EASE	3.2%	61%
NET MERIT \$	721	

GTPI
2536

AUSTRALIAN INDICES (08/2019)

BPI	301	66%
HWI	252	59%
TWI	281	65%
OVERALL TYPE	103	58%
MAMMARY	102	58%
DAUGHTER FERTILITY	109	52%
HEAT TOLERANCE	95	38%

\$17.00 Conv



DELTA-CHANCE

Delta x Bob x Numero Uno 15% Black
 HBN: H08400003010364844 NASIS: STGCHANCE
BETA CASEIN: A1/A1 NAAB: 551H003360

Sire: Mr Mogul Delta Dam: Edg Cp Bob 57351 VG85
 MG Sire: Roylane Bookem Bob MG Dam: Larcrest Centerpiece VG86

USDA - CDCB GENOMIC SIRE EVALUATION | AUGUST 2019 | DTRS 0 HERDS 0 | 78% REL

MILK LBS	FAT LBS	FAT %	PROT LBS	PROT %
852	91	0.21	41	0.05

USDA CDCB TYPE SUMMARY 08/2019

PTAT +2.18 79%R UDC+2.39 FLC+0.91 BSC +0.10 0 D / 0 H

			-2	-1	0	1	2
Stature	+1.23	Tall					
Strength	+0.45	Strong					
Body Depth	+0.70	Deep					
Dairy Form	+1.84	Open Rib					
Rump Angle	-0.71	High Pins					
Thurl Width	+1.75	Wide					
Rear Legs-Side View	+0.36	Sickle					
Rear Legs-Rear View	+0.77	Straight					
Foot Angle	+1.57	Steep					
Feet & Legs Score	+1.09	High					
F. Udder Attachment	+2.67	Strong					
Rear Udder Height	+3.13	High					
Rear Udder Width	+2.88	Wide					
Udder Cleft	+2.00	Strong					
Udder Depth	+2.07	Shallow					
Front Teat Placement	+1.67	Close					
Rear Teat Placement	+2.02	Close					
Teat Length	-0.75	Short					

MGD: LARCREST CRIMSON



CALVING, HEALTH, FERTILITY USDA - CDCB EVALUATION

DAUGHTER PREGNANCY RATE	+1.4	76%
PRODUCTIVE LIFE	+5.0	76%
FERTILITY INDEX	+1.9	
LIVABILITY	+1.3	70%
SOMATIC CELL SCORE	2.89	77%
GESTATION LENGTH	-1	
SIRE CALVING EASE	7.0%	89%
DAUGHTER CALVING EASE	4.3%	67%
NET MERIT \$	789	

GTPI
2617

AUSTRALIAN INDICES (08/2019)

BPI	285	67%
HWI	225	60%
TWI	284	66%
OVERALL TYPE	103	60%
MAMMARY	106	60%
DAUGHTER FERTILITY	106	57%
HEAT TOLERANCE	96	38%

\$52.00 SexedULTRA4M

Hurtgenlea Richard

SexedULTRA4M

CHARL



Charley x Yoder x Supersire

85% Black

HBN: HOUSA000074345956

NASIS: STGCHARL

BETA CASEIN: A2/A2

NAAB: 551H003529

Sire: Dg Charley

Dam: Hurtgenlead Yoder Modesto VG86

MG Sire: Woodcrest Mogul Yoder

MG Dam: Hurtgenlead Supersire Malibu VG85

USDA - CDCB GENOMIC SIRE EVALUATION | AUGUST 2019 | DTRS 0 HERDS 0 | 78% REL

MILK LBS	FAT LBS	FAT %	PROT LBS	PROT %
1777	106	0.14	61	0.02

USDA CDCB TYPE SUMMARY 08/2019

PTAT +1.62 77%R UDC+1.82 FLC+0.33 BSC -1.01 0 D / 0 H

			-2	-1	0	1	2
Stature	+0.66	Tall					
Strength	-0.58	Frail					
Body Depth	-0.27	Shallow					
Dairy Form	+1.70	Open Rib					
Rump Angle	+0.94	Sloped					
Thurl Width	+0.43	Wide					
Rear Legs-Side View	+0.00	Sickle					
Rear Legs-Rear View	+0.34	Straight					
Foot Angle	-0.04	Low					
Feet & Legs Score	+0.50	High					
F. Udder Attachment	+2.13	Strong					
Rear Udder Height	+2.72	High					
Rear Udder Width	+2.50	Wide					
Udder Cleft	+0.10	Strong					
Udder Depth	+1.49	Shallow					
Front Teat Placement	+0.96	Close					
Rear Teat Placement	+0.69	Close					
Teat Length	-1.65	Short					

DAM: HURTGENLEAD YODER MODESTO VG86



CALVING, HEALTH, FERTILITY USDA - CDCB EVALUATION

DAUGHTER PREGNANCY RATE	+1.6	73%
PRODUCTIVE LIFE	+7.4	74%
FERTILITY INDEX	+2.4	
LIVABILITY	+2.6	67%
SOMATIC CELL SCORE	2.79	77%
GESTATION LENGTH	-3	
SIRE CALVING EASE	6.3%	73%
DAUGHTER CALVING EASE	2.6%	68%
NET MERIT \$	1004	



EcoFeed 105

GTPI
2805

\$90.00 SexedULTRA4M

Mr Super



CONTENDER

Supershot x Numero Uno x Observer

60% Black

HBN: H0840003129037755

NASIS: CBCONTENDER

BETA CASEIN: A2/A2

NAAB: 224H004210

Sire: Cogent Supershot

Dam: Larcrest Cardigan VG86

MG Sire: Amighetti Numero Uno

MG Dam: Larcrest Cale VG89

USDA - CDCB GENOMIC SIRE EVALUATION | AUGUST 2019 | DTRS 0 HERDS 0 | 78% REL

MILK LBS	FAT LBS	FAT %	PROT LBS	PROT %
921	57	0.08	47	0.07

USDA CDCB TYPE SUMMARY 08/2019

PTAT +2.16 79%R UDC+1.62 FLC+0.36 BSC +2.42 0 D / 0 H

			-2	-1	0	1	2
Stature	+2.73	Tall					
Strength	+2.22	Strong					
Body Depth	+1.63	Deep					
Dairy Form	+0.81	Open Rib					
Rump Angle	+0.96	Sloped					
Thurl Width	+2.60	Wide					
Rear Legs-Side View	+0.21	Sickle					
Rear Legs-Rear View	+0.45	Straight					
Foot Angle	+1.27	Steep					
Feet & Legs Score	+0.93	High					
F. Udder Attachment	+2.84	Strong					
Rear Udder Height	+2.39	High					
Rear Udder Width	+2.20	Wide					
Udder Cleft	+0.83	Strong					
Udder Depth	+2.28	Shallow					
Front Teat Placement	+0.78	Close					
Rear Teat Placement	+0.25	Close					
Teat Length	+0.36	Long					



DAM: LARCREST CARDIGAN VG86

CALVING, HEALTH, FERTILITY USDA - CDCB EVALUATION

DAUGHTER PREGNANCY RATE	+1.1	76%
PRODUCTIVE LIFE	+5.6	76%
FERTILITY INDEX	+1.3	
LIVABILITY	+1.6	71%
SOMATIC CELL SCORE	2.44	78%
GESTATION LENGTH	-1	
SIRE CALVING EASE	7.3%	87%
DAUGHTER CALVING EASE	3.8%	68%
NET MERIT \$	649	

GTPI
2505

AUSTRALIAN INDICES (08/2019)

BPI	269	69%
HWI	240	63%
TWI	261	69%
OVERALL TYPE	103	66%
MAMMARY	102	66%
DAUGHTER FERTILITY	108	62%
HEAT TOLERANCE	94	38%

\$20.00 Conv

Col Dg

Sexed**ULTRA4M™**

CRUSHTIME

Crush x Mogul x Meridian

45% Black

HBN: HODEU000539782028

NASIS: STGCRUSHTIME

BETA CASEIN: A1/A2

NAAB: 551H003627

Sire: Maverick Crush

Dam: Oh-River-Syc Mogul Brylan VG87

MG Sire: Mountfield Ssi Dcy Mogul MG Dam: Oh-River-Syc Mrdn Billie EX90

USDA - CDCB GENOMIC SIRE EVALUATION | AUGUST 2019 | DTRS 0 HERDS 0 | 78% REL

MILK LBS	FAT LBS	FAT %	PROT LBS	PROT %
461	4	-0.05	23	0.03

USDA CDCB TYPE SUMMARY 08/2019

PTAT +3.84 79%R UDC+3.32 FLC+1.96 BSC +1.52 0 D / 0 H

			-2	-1	0	1	2
Stature	+3.44	Tall					
Strength	+1.95	Strong					
Body Depth	+2.54	Deep					
Dairy Form	+2.89	Open Rib					
Rump Angle	+0.12	Sloped					
Thurl Width	+2.85	Wide					
Rear Legs-Side View	+1.27	Sickle					
Rear Legs-Rear View	+2.21	Straight					
Foot Angle	+2.17	Steep					
Feet & Legs Score	+2.59	High					
F. Udder Attachment	+4.71	Strong					
Rear Udder Height	+4.44	High					
Rear Udder Width	+4.08	Wide					
Udder Cleft	+2.39	Strong					
Udder Depth	+3.64	Shallow					
Front Teat Placement	+1.87	Close					
Rear Teat Placement	+1.67	Close					
Teat Length	+0.12	Long					

DAM: OH RIVER SYC MOGUL BRYLAN



St Gen Noble

Sexed**ULTRA4M™**

DUBAI

NEW



Noble x Dearing x Balisto

70% Black

HBN: H0840003146616169

NASIS: STGDUBAI

BETA CASEIN: A2/A2

NAAB: 551H003800

Sire: Mr Spring Noble

Dam: St Gen 74031

MG Sire: Mr Day Dearing 1445

MG Dam: Ms Dds Hope Balisto 18192

USDA - CDCB GENOMIC SIRE EVALUATION | AUGUST 2019 | DTRS 0 HERDS 0 | 78% REL

MILK LBS	FAT LBS	FAT %	PROT LBS	PROT %
1357	85	0.12	64	0.08

USDA CDCB TYPE SUMMARY 08/2019

PTAT +1.89 75%R UDC+2.48 FLC+0.67 BSC -0.52 0 D / 0 H

			-2	-1	0	1	2
Stature	+0.50	Tall					
Strength	-0.24	Frail					
Body Depth	-0.15	Shallow					
Dairy Form	+1.40	Open Rib					
Rump Angle	-0.40	High Pins					
Thurl Width	+1.20	Wide					
Rear Legs-Side View	+0.52	Sickle					
Rear Legs-Rear View	+0.09	Straight					
Foot Angle	+0.58	Steep					
Feet & Legs Score	+0.89	High					
F. Udder Attachment	+2.38	Strong					
Rear Udder Height	+3.33	High					
Rear Udder Width	+3.06	Wide					
Udder Cleft	+1.24	Strong					
Udder Depth	+1.80	Shallow					
Front Teat Placement	+1.28	Close					
Rear Teat Placement	+1.14	Close					
Teat Length	-0.35	Short					

MGGD: VIEW HOME UNO HOPE



CALVING, HEALTH, FERTILITY USDA - CDCB EVALUATION

DAUGHTER PREGNANCY RATE	-2.7	76%
PRODUCTIVE LIFE	+0.0	75%
FERTILITY INDEX	-2.5	
LIVABILITY	-4.7	68%
SOMATIC CELL SCORE	2.85	78%
GESTATION LENGTH	-1	
SIRE CALVING EASE	6.8%	63%
DAUGHTER CALVING EASE	5.9%	60%
NET MERIT \$	130	

GTPI
2019

AUSTRALIAN INDICES (08/2019)

BPI	165	67%
HWI	151	61%
TWI	216	67%
OVERALL TYPE	104	62%
MAMMARY	111	62%
DAUGHTER FERTILITY	99	56%
HEAT TOLERANCE	99	38%



EcoFeed 105

\$75.00 Sexed**ULTRA4M™**

CALVING, HEALTH, FERTILITY USDA - CDCB EVALUATION

DAUGHTER PREGNANCY RATE	+2.1	72%
PRODUCTIVE LIFE	+8.5	73%
FERTILITY INDEX	+2.4	
LIVABILITY	+5.7	67%
SOMATIC CELL SCORE	2.69	74%
GESTATION LENGTH	-2	
SIRE CALVING EASE	7.5%	61%
DAUGHTER CALVING EASE	2.9%	56%
NET MERIT \$	1008	

GTPI
2853

AUSTRALIAN INDICES (08/2019)

BPI	295	64%
HWI	250	56%
TWI	268	62%
OVERALL TYPE	100	51%
MAMMARY	105	51%
DAUGHTER FERTILITY	108	47%
HEAT TOLERANCE	94	38%



EcoFeed 101

\$125.00 Sexed**ULTRA4M™**



Imagine...

the opportunity to create
value faster than ever before.



LE[♂]END[™]

Nashville

The STgenetics Legend[™] program gives producers early access to our newest and most prized young sires, through our advanced sexed semen product: SexedULTRA 4M[®]. STgenetics Legend[™] program producers are also invited to become partners in our proprietary breeding program to create strong genetics and get them into the market faster.

LEGEND[™] DESIGNATED SIRES OFFERED IN **SexedULTRA 4M[®]** SEMEN

Naab Code	Name	A2A2	TPI	NM\$	MILK	FAT	PROT	PL	DPR	PTAT	UDC	FLC	SCE	SIRE	MG SIRE
551H003600	Nashville	A2A2	2897	1057	2124	96	80	8.8	1.6	1.55	1.54	1.53	7.4	Dynasty	Nominee
551H003797	Tampa	A2A2	2868	1017	2229	79	77	9.1	2.3	1.62	1.88	1.03	6.5	High Noon	Jedi
551H003812	Imperial	A2A2	2864	991	1528	81	65	8.2	2.4	1.92	2.6	0.82	7.9	Noble	Director
551H003590	Dedicate	A2A2	2828	994	1445	87	64	8.6	2.4	1.69	2.43	0.24	6.6	Superhero	Robust
551H003788	Irvine	A2A2	2823	947	2047	82	71	7.2	2.3	1.91	2.72	0	8.5	Noble	Draco
551H003529	Charl	A2A2	2805	1004	1777	106	61	7.4	1.6	1.62	1.82	0.33	6.3	Charley	Yoder
551H003749	Maroon		2802	989	824	114	56	6.9	0.4	1.83	2.43	1.43	7.5	Dynasty	Delta
551H003972	Jumpstart		2797	1001	1675	86	67	8.8	1.2	1.46	1.7	1.58	5	High Noon	Delta
551H003753	Abbotsford	A2A2	2786	933	1807	98	69	5.7	0.7	2.12	2.27	1.3	7.2	Noble	Rubicon
551H003638	Rocco	A2A2	2770	967	1374	97	51	7.8	0.3	2.14	2.25	1.66	6.2	Delta-Worth	Rubicon

St Gen Noble

Sexed**ULTRA**4M™**CZAR****NEW**

Noble x Jedi x Kingboy

80% Black

HBN: H0840003123606896

NASIS: STGCZAR

BETA CASEIN: A2/A2

NAAB: 551H003689

Sire: Mr Spring Noble

Dam: Rugg Doc Jedi Chanay

MG Sire: S-S-I Montross Jedi

MG Dam: Rugg-Doc Kingboy Cherry VG86

USDA - CDCB GENOMIC SIRE EVALUATION | AUGUST 2019 | DTRS 0 HERDS 0 | 78% REL

MILK LBS	FAT LBS	FAT %	PROT LBS	PROT %
1336	62	0.04	53	0.04

USDA CDCB TYPE SUMMARY 08/2019

PTAT +2.54 74%R UDC+3.39 FLC+0.71 BSC +0.91 0 D / 0 H

			-2	-1	0	1	2
Stature	+1.45	Tall					
Strength	+0.80	Strong					
Body Depth	+0.15	Deep					
Dairy Form	+0.37	Open Rib					
Rump Angle	-0.89	High Pins					
Thurl Width	+0.98	Wide					
Rear Legs-Side View	-2.01	Posty					
Rear Legs-Rear View	+0.72	Straight					
Foot Angle	+2.17	Steep					
Feet & Legs Score	+0.82	High					
F. Udder Attachment	+3.77	Strong					
Rear Udder Height	+4.33	High					
Rear Udder Width	+3.98	Wide					
Udder Cleft	+1.44	Strong					
Udder Depth	+3.46	Shallow					
Front Teat Placement	+1.14	Close					
Rear Teat Placement	+0.84	Close					
Teat Length	-0.24	Short					

ST GEN NOBLE CZAR



Frank Robinson

CALVING, HEALTH, FERTILITY USDA - CDCB EVALUATION

DAUGHTER PREGNANCY RATE	+3.2	72%
PRODUCTIVE LIFE	+7.8	72%
FERTILITY INDEX	+3.6	
LIVABILITY	+3.5	67%
SOMATIC CELL SCORE	2.57	74%
GESTATION LENGTH	-3	
SIRE CALVING EASE	6.8%	61%
DAUGHTER CALVING EASE	3.0%	56%
NET MERIT \$	878	

GTPI
2815**\$30.00 Conv****\$65.00 Sexed**ULTRA**4M™**

Mr Superhero

Sexed**ULTRA**4M™**DEDICATE**

Superhero x Robust x Planet

85% Black

HBN: H0840003132352541

NASIS: STGDEDICATE

BETA CASEIN: A2/A2

NAAB: 551H003590

Sire: Endco Superhero

Dam: Miss Ocd Robst Delicious VG87

MG Sire: Roylane Socra Robust

MG Dam: OCD Planet Danica EX93

USDA - CDCB GENOMIC SIRE EVALUATION | AUGUST 2019 | DTRS 0 HERDS 0 | 78% REL

MILK LBS	FAT LBS	FAT %	PROT LBS	PROT %
1445	87	0.12	64	0.07

USDA CDCB TYPE SUMMARY 08/2019

PTAT +1.69 79%R UDC+2.43 FLC+0.24 BSC -1.17 0 D / 0 H

			-2	-1	0	1	2
Stature	-0.05	Short					
Strength	-0.73	Frail					
Body Depth	-0.67	Shallow					
Dairy Form	+1.65	Open Rib					
Rump Angle	+0.18	Sloped					
Thurl Width	+1.14	Wide					
Rear Legs-Side View	+1.57	Sickle					
Rear Legs-Rear View	-0.38	Hock In					
Foot Angle	-0.24	Low					
Feet & Legs Score	+0.42	High					
F. Udder Attachment	+2.23	Strong					
Rear Udder Height	+3.28	High					
Rear Udder Width	+3.02	Wide					
Udder Cleft	+1.47	Strong					
Udder Depth	+1.15	Shallow					
Front Teat Placement	+1.02	Close					
Rear Teat Placement	+1.15	Close					
Teat Length	-0.20	Short					

DAM: MISS ODC ROBST DELICIOUS



Evelyn Higgins

CALVING, HEALTH, FERTILITY USDA - CDCB EVALUATION

DAUGHTER PREGNANCY RATE	+2.4	76%
PRODUCTIVE LIFE	+8.6	77%
FERTILITY INDEX	+2.8	
LIVABILITY	+4.4	70%
SOMATIC CELL SCORE	2.71	80%
GESTATION LENGTH	+0	
SIRE CALVING EASE	6.6%	70%
DAUGHTER CALVING EASE	3.7%	69%
NET MERIT \$	994	

GTPI
2828**EcoFeed 100****\$85.00 Sexed**ULTRA**4M™****AUSTRALIAN INDICES (08/2019)**

BPI	298	68%
HWI	251	61%
TWI	276	66%
OVERALL TYPE	102	60%
MAMMARY	106	60%
DAUGHTER FERTILITY	106	55%
HEAT TOLERANCE	99	38%

CURSOR

Curry x Supershot x Numero Uno

80% Black

HBN: H0GBR949027111467

NASIS: CBCCURSOR

BETA CASEIN: A2/A2

NAAB: 522H003782

Sire: De-Su Curry 13360
MG Sire: Cogent SupershotDam: Boghill Glamour Supershot Car
MG Dam: Glamour Carlin

USDA - CDCB GENOMIC SIRE EVALUATION | AUGUST 2019 | DTRS 0 HERDS 0 | 78% REL

MILK LBS	FAT LBS	FAT %	PROT LBS	PROT %
1560	85	0.09	66	0.06

USDA CDCB TYPE SUMMARY 08/2019

PTAT +0.44 74%R UDC+0.53 FLC-0.25 BSC +0.02 0 D / 0 H

			-2	-1	0	1	2
Stature	+0.13	Tall					
Strength	+0.34	Strong					
Body Depth	+0.04	Deep					
Dairy Form	+0.53	Open Rib					
Rump Angle	+0.54	Sloped					
Thurl Width	-0.05	Narrow					
Rear Legs-Side View	-0.85	Posty					
Rear Legs-Rear View	-0.63	Hock In					
Foot Angle	+0.15	Steep					
Feet & Legs Score	-0.15	Low					
F. Udder Attachment	+0.54	Strong					
Rear Udder Height	+1.64	High					
Rear Udder Width	+1.51	Wide					
Udder Cleft	-0.16	Weak					
Udder Depth	-0.22	Deep					
Front Teat Placement	-0.73	Wide					
Rear Teat Placement	-0.62	Wide					
Teat Length	+2.03	Long					

BOGHILL GLAMOUR CURRY



CALVING, HEALTH, FERTILITY USDA - CDCB EVALUATION

DAUGHTER PREGNANCY RATE	+2.0	72%
PRODUCTIVE LIFE	+7.5	73%
FERTILITY INDEX	+1.6	
LIVABILITY	+2.7	67%
SOMATIC CELL SCORE	2.66	74%
GESTATION LENGTH	-3	
SIRE CALVING EASE	6.6%	62%
DAUGHTER CALVING EASE	3.9%	56%
NET MERIT \$	866	

GTPI
2592

\$25.00 Conv

\$55.00 Sexed**ULTRA4M**

DINERO

NEW

Noble x Delta x Supersire

75% Black

HBN: H0840003146616313

NASIS: STGDINERO

BETA CASEIN: A1/A2

NAAB: 551H03803

Sire: Mr Spring Noble
MG Sire: Mr Mogul Delta 1427Dam: No-Fla Delta Larae 44666
MG Dam: No-Fla Supersire 36090

USDA - CDCB GENOMIC SIRE EVALUATION | AUGUST 2019 | DTRS 0 HERDS 0 | 78% REL

MILK LBS	FAT LBS	FAT %	PROT LBS	PROT %
1019	88	0.18	51	0.07

USDA CDCB TYPE SUMMARY 08/2019

PTAT +0.97 75%R UDC+2.36 FLC+0.73 BSC -1.12 0 D / 0 H

			-2	-1	0	1	2
Stature	-1.81	Short					
Strength	-0.90	Frail					
Body Depth	-1.25	Shallow					
Dairy Form	-0.11	Tight					
Rump Angle	-1.44	High Pins					
Thurl Width	-0.03	Narrow					
Rear Legs-Side View	-0.57	Posty					
Rear Legs-Rear View	+0.12	Straight					
Foot Angle	+0.52	Steep					
Feet & Legs Score	+0.31	High					
F. Udder Attachment	+2.14	Strong					
Rear Udder Height	+2.71	High					
Rear Udder Width	+2.49	Wide					
Udder Cleft	+0.35	Strong					
Udder Depth	+0.97	Shallow					
Front Teat Placement	+1.02	Close					
Rear Teat Placement	+0.86	Close					
Teat Length	-0.84	Short					

ST GEN NOBLE DINERO



CALVING, HEALTH, FERTILITY USDA - CDCB EVALUATION

DAUGHTER PREGNANCY RATE	+2.2	72%
PRODUCTIVE LIFE	+9.5	73%
FERTILITY INDEX	+2.2	
LIVABILITY	+6.1	67%
SOMATIC CELL SCORE	2.45	74%
GESTATION LENGTH	-3	
SIRE CALVING EASE	6.3%	61%
DAUGHTER CALVING EASE	4.2%	56%
NET MERIT \$	1025	

GTPI
2792

AUSTRALIAN INDICES (08/2019)

BPI	302	65%
HWI	259	57%
TWI	290	63%
OVERALL TYPE	101	53%
MAMMARY	105	53%
DAUGHTER FERTILITY	108	49%
HEAT TOLERANCE	99	38%



EcoFeed 102

\$100.00 Sexed**ULTRA4M**

EDGE

Monterey x Lexor x Observer40% Black

HBN: H0840003123611235NASIS: STGEDGE

BETA CASEIN: A1/A2NAAB: 551H003255

Sire:View Home MontereyDam:Clear-Echo Lexor 2793 VG86

MG Sire:Generations LexorMG Dam:Clear-Echo Observer 2280

USDA - CDCB GENOMIC SIRE EVALUATION AUGUST 2019 DTRS 0 HERDS 0 78% REL				
MILK LBS	FAT LBS	FAT %	PROT LBS	PROT %
807	48	0.06	47	0.08

USDA CDCB TYPE SUMMARY 08/2019				
PTAT +2.85 79%R UDC+2.01 FLC+0.99 BSC +1.71 0 D / 0 H				
		-2	-1	0 1 2
Stature	+3.83	Tall		
Strength	+1.73	Strong		
Body Depth	+2.09	Deep		
Dairy Form	+2.28	Open Rib		
Rump Angle	-0.13	High Pins		
Thurl Width	+2.88	Wide		
Rear Legs-Side View	+0.77	Sickle		
Rear Legs-Rear View	+1.27	Straight		
Foot Angle	+1.64	Steep		
Feet & Legs Score	+1.78	High		
F. Udder Attachment	+2.42	Strong		
Rear Udder Height	+2.91	High		
Rear Udder Width	+2.68	Wide		
Udder Cleft	+3.40	Strong		
Udder Depth	+2.84	Shallow		
Front Teat Placement	+2.47	Close		
Rear Teat Placement	+2.80	Close		
Teat Length	-0.25	Short		



CALVING, HEALTH, FERTILITY USDA - CDCB EVALUATION		
DAUGHTER PREGNANCY RATE	+0.6	76%
PRODUCTIVE LIFE	+3.7	76%
FERTILITY INDEX	+1.3	
LIVABILITY	+0.4	71%
SOMATIC CELL SCORE	2.84	78%
GESTATION LENGTH	+0	
SIRE CALVING EASE	7.4%	85%
DAUGHTER CALVING EASE	3.6%	68%
NET MERIT \$	550	

GTPI
2449

AUSTRALIAN INDICES (08/2019)		
BPI	255	69%
HWI	197	63%
TWI	250	69%
OVERALL TYPE	102	65%
MAMMARY	107	65%
DAUGHTER FERTILITY	107	61%
HEAT TOLERANCE	101	38%

\$20.00 Conv

\$48.00SexedULTRA4M

Wilt

EMILIO

Capital Gain x Yorick x Shottle20% Black

HBN: HOFRA006770943765NASIS: AIEMILIO

BETA CASEIN: A1/A2NAAB: 288H000188

Sire:Stantons Capital GainDam:Wilt Emy EX92

MG Sire:Mars YorickMG Dam:Wilt Elema VG87

USDA - CDCB GENOMIC SIRE EVALUATION AUGUST 2019 DTRS 0 HERDS 0 78% REL				
MILK LBS	FAT LBS	FAT %	PROT LBS	PROT %
701	41	0.05	12	-0.03

USDA CDCB TYPE SUMMARY 08/2019				
PTAT +3.79 77%R UDC+2.78 FLC+1.31 BSC +2.38 0 D / 0 H				
		-2	-1	0 1 2
Stature	+3.82	Tall		
Strength	+3.01	Strong		
Body Depth	+3.47	Deep		
Dairy Form	+3.03	Open Rib		
Rump Angle	-1.25	High Pins		
Thurl Width	+2.81	Wide		
Rear Legs-Side View	+1.21	Sickle		
Rear Legs-Rear View	+1.85	Straight		
Foot Angle	+2.04	Steep		
Feet & Legs Score	+1.97	High		
F. Udder Attachment	+3.52	Strong		
Rear Udder Height	+4.55	High		
Rear Udder Width	+4.19	Wide		
Udder Cleft	+2.59	Strong		
Udder Depth	+2.50	Shallow		
Front Teat Placement	+1.85	Close		
Rear Teat Placement	+2.06	Close		
Teat Length	-0.73	Short		



CALVING, HEALTH, FERTILITY USDA - CDCB EVALUATION		
DAUGHTER PREGNANCY RATE	-2.5	75%
PRODUCTIVE LIFE	+0.0	75%
FERTILITY INDEX	-1.8	
LIVABILITY	-2.9	68%
SOMATIC CELL SCORE	2.79	76%
GESTATION LENGTH	-1	
SIRE CALVING EASE	8.3%	86%
DAUGHTER CALVING EASE	5.8%	67%
NET MERIT \$	224	

GTPI
2088

\$25.00 Conv

\$75.00SexedULTRA4M

ESQUIRE

Rubi-Agronaut x PowerBall-P x Supersire 90% Black

HBN: H0840003132352999 NASIS: STGESQUIRE

BETA CASEIN: A1/A2 NAAB: 551H003596

Sire: Mr Rubi Agronaut Dam: Ing Power Elsa 9589
 MG Sire: View-Home Powerball P MG Dam: Farnear Supersire 1678

USDA - CDCB GENOMIC SIRE EVALUATION | AUGUST 2019 | DTRS 0 HERDS 0 | 78% REL

MILK LBS	FAT LBS	FAT %	PROT LBS	PROT %
1565	76	0.06	70	0.08

USDA CDCB TYPE SUMMARY 08/2019

PTAT +2.43 75%R UDC+1.95 FLC+1.94 BSC +0.98 0 D / 0 H

Stature	+2.19	Tall			
Strength	+1.30	Strong			
Body Depth	+1.36	Deep			
Dairy Form	+1.78	Open Rib			
Rump Angle	+1.46	Sloped			
Thurl Width	+1.58	Wide			
Rear Legs-Side View	-0.35	Posty			
Rear Legs-Rear View	+2.01	Straight			
Foot Angle	+2.36	Steep			
Feet & Legs Score	+2.24	High			
F. Udder Attachment	+2.38	Strong			
Rear Udder Height	+3.07	High			
Rear Udder Width	+2.82	Wide			
Udder Cleft	+1.57	Strong			
Udder Depth	+1.55	Shallow			
Front Teat Placement	+1.99	Close			
Rear Teat Placement	+2.00	Close			
Teat Length	-0.65	Short			

ST GEN R-AGRO ESQUIRE



DELTA-ETA 67481

NEW

Delta x Bookem x Million

65% Black

HBN: H0840003123611270

NASIS: STGDELTAETA

BETA CASEIN: A2/A2

NAAB: 551H003268

Sire: Mr Mogul Delta 1427 Dam: Welcome Bookem Ety VG85
 MG Sire: De-Su 521 Bookem MG Dam: Welcome Million Evaline EX90

USDA - CDCB GENOMIC SIRE EVALUATION | AUGUST 2019 | DTRS 0 HERDS 0 | 78% REL

MILK LBS	FAT LBS	FAT %	PROT LBS	PROT %
406	77	0.23	36	0.09

USDA CDCB TYPE SUMMARY 08/2019

PTAT +2.14 80%R UDC+2.91 FLC+1.62 BSC -0.50 0 D / 0 H

Stature	+0.41	Tall			
Strength	-0.14	Frail			
Body Depth	-0.19	Shallow			
Dairy Form	+1.14	Open Rib			
Rump Angle	-0.40	High Pins			
Thurl Width	+0.31	Wide			
Rear Legs-Side View	+0.44	Sickle			
Rear Legs-Rear View	+1.48	Straight			
Foot Angle	+1.51	Steep			
Feet & Legs Score	+1.57	High			
F. Udder Attachment	+3.21	Strong			
Rear Udder Height	+3.85	High			
Rear Udder Width	+3.54	Wide			
Udder Cleft	+0.91	Strong			
Udder Depth	+2.15	Shallow			
Front Teat Placement	+1.52	Close			
Rear Teat Placement	+0.83	Close			
Teat Length	-1.02	Short			

ST GEN DELTA ETA



CALVING, HEALTH, FERTILITY USDA - CDCB EVALUATION

DAUGHTER PREGNANCY RATE	+0.4	72%
PRODUCTIVE LIFE	+6.3	73%
FERTILITY INDEX	+0.7	
LIVABILITY	+1.7	67%
SOMATIC CELL SCORE	2.64	74%
GESTATION LENGTH	-1	
SIRE CALVING EASE	6.8%	78%
DAUGHTER CALVING EASE	3.4%	67%
NET MERIT \$	848	

GTPI
2742

AUSTRALIAN INDICES (08/2019)

BPI	295	65%
HWI	255	58%
TWI	300	63%
OVERALL TYPE	104	55%
MAMMARY	106	55%
DAUGHTER FERTILITY	106	49%
HEAT TOLERANCE	94	38%



EcoFeed 103

\$30.00 Conv

\$70.00 SexedULTRA4M

CALVING, HEALTH, FERTILITY USDA - CDCB EVALUATION

DAUGHTER PREGNANCY RATE	+0.4	76%
PRODUCTIVE LIFE	+6.6	77%
FERTILITY INDEX	+1.0	
LIVABILITY	+2.4	71%
SOMATIC CELL SCORE	2.74	79%
GESTATION LENGTH	+1	
SIRE CALVING EASE	6.1%	91%
DAUGHTER CALVING EASE	3.7%	67%
NET MERIT \$	798	

GTPI
2611

AUSTRALIAN INDICES (08/2019)

BPI	275	68%
HWI	241	61%
TWI	264	66%
OVERALL TYPE	101	60%
MAMMARY	104	60%
DAUGHTER FERTILITY	106	58%
HEAT TOLERANCE	98	38%



EcoFeed 102

\$66.00 SexedULTRA4M

EVOLVE P

Powerball P x Balisto x Epic

90% Black

HBN: HO840003129038324

NASIS: CBEVOLVE

BETA CASEIN: A2/A2

NAAB: 224H004511

Sire: View-Home Powerball
MG Sire: De-Su 11236 BalistoDam: Royal-Vista Balisto Esta
MG Dam: Royal-Vista Epic Estelle EX91

USDA - CDCB GENOMIC SIRE EVALUATION | AUGUST 2019 | DTRS 0 HERDS 0 | 78% REL

MILK LBS	FAT LBS	FAT %	PROT LBS	PROT %
784	60	0.11	60	0.13

USDA CDCB TYPE SUMMARY 08/2019

PTAT +1.94 79%R UDC+2.04 FLC+0.83 BSC +0.26 0 D / 0 H

			-2	-1	0	1	2
Stature	+2.11	Tall					
Strength	+0.39	Strong					
Body Depth	+0.71	Deep					
Dairy Form	+1.70	Open Rib					
Rump Angle	+0.92	Sloped					
Thurl Width	+1.40	Wide					
Rear Legs-Side View	+0.91	Sickle					
Rear Legs-Rear View	+0.36	Straight					
Foot Angle	+1.34	Steep					
Feet & Legs Score	+1.38	High					
F. Udder Attachment	+3.00	Strong					
Rear Udder Height	+2.87	High					
Rear Udder Width	+2.64	Wide					
Udder Cleft	+0.57	Strong					
Udder Depth	+2.39	Shallow					
Front Teat Placement	+0.99	Close					
Rear Teat Placement	+0.30	Close					
Teat Length	+0.30	Long					

ENDCO EVOLVE P



Patty Jones

CALVING, HEALTH, FERTILITY USDA - CDCB EVALUATION

DAUGHTER PREGNANCY RATE	-0.2	75%
PRODUCTIVE LIFE	+3.1	75%
FERTILITY INDEX	+0.4	
LIVABILITY	+1.0	69%
SOMATIC CELL SCORE	2.87	78%
GESTATION LENGTH	-1	
SIRE CALVING EASE	6.5%	69%
DAUGHTER CALVING EASE	2.8%	67%
NET MERIT \$	655	

GTPI
2506

AUSTRALIAN INDICES (08/2019)

BPI	300	68%
HWI	265	61%
TWI	300	67%
OVERALL TYPE	104	62%
MAMMARY	105	62%
DAUGHTER FERTILITY	110	56%
HEAT TOLERANCE	90	38%

\$20.00 Conv

\$50.00 Sexed ULTRA 4M

DELTA-GAMMA

Delta x Numero Uno x Domain

35% Black

HBN: HO8400003125993618

NASIS: STGGAMMA

BETA CASEIN: A1/A2

NAAB: 151H003234

Sire: Mr Mogul Delta 1427
MG Sire: Amighetti Numero UnoDam: Farnear Numero Uno 1667
MG Dam: De-Su 267 VG85

USDA - CDCB GENOMIC SIRE EVALUATION | AUGUST 2019 | DTRS 0 HERDS 0 | 78% REL

MILK LBS	FAT LBS	FAT %	PROT LBS	PROT %
1220	70	0.09	41	0.01

USDA CDCB TYPE SUMMARY 08/2019

PTAT +1.77 78%R UDC+2.47 FLC+1.02 BSC +0.22 0 D / 0 H

			-2	-1	0	1	2
Stature	+0.90	Tall					
Strength	+0.35	Strong					
Body Depth	+0.21	Deep					
Dairy Form	+0.81	Open Rib					
Rump Angle	+0.63	Sloped					
Thurl Width	+0.74	Wide					
Rear Legs-Side View	-0.58	Posty					
Rear Legs-Rear View	+0.71	Straight					
Foot Angle	+1.39	Steep					
Feet & Legs Score	+1.18	High					
F. Udder Attachment	+2.19	Strong					
Rear Udder Height	+3.43	High					
Rear Udder Width	+3.16	Wide					
Udder Cleft	+1.59	Strong					
Udder Depth	+1.99	Shallow					
Front Teat Placement	+1.02	Close					
Rear Teat Placement	+1.01	Close					
Teat Length	-0.22	Short					

MGD: DE SU 267 VG85



Paul Hayes

CALVING, HEALTH, FERTILITY USDA - CDCB EVALUATION

DAUGHTER PREGNANCY RATE	+0.8	76%
PRODUCTIVE LIFE	+7.0	79%
FERTILITY INDEX	+1.3	
LIVABILITY	+2.5	73%
SOMATIC CELL SCORE	2.73	82%
GESTATION LENGTH	-1	
SIRE CALVING EASE	3.8%	93%
DAUGHTER CALVING EASE	2.8%	69%
NET MERIT \$	782	

GTPI
2567

AUSTRALIAN INDICES (08/2019)

BPI	241	68%
HWI	197	61%
TWI	225	67%
OVERALL TYPE	101	62%
MAMMARY	106	62%
DAUGHTER FERTILITY	108	58%
HEAT TOLERANCE	103	38%

\$22.00 Conv

\$48.00 Sexed ULTRA 4M

Calving Ease

>90% RELIABILITY

CALVING EASE SIRES AVAILABLE
IN **SexedULTRA4M** SEMEN

NAME	SCE%
Farnear-Bh DELTA GAMMA	3.8%
Guye Holdings SAMITE	4.6%
Farnear JUMPSTART	5.0%
Cogent BILL	5.2%
TW GOODWHONE	5.2%
Prehen LANCASTER	5.3%
ST Gen M-Duke LEDOUX	5.4%
ST Gen Rr APPLEFREE	5.5%
Farnear Tbr DELTA JOLT	5.5%
Vogue REVIVAL RED	5.5%
Mr Dds Mt HONDO	5.6%
Farnear Mdsty NO CAN DO	5.6%
Vala Answer to PETE	5.9%

SexedULTRA4M is
Calving Ease's best friend!

Healthier Calves from Easier Calving:



- ✓ Decreases rates of stillbirth
- ✓ Lowers risks of respiratory disease
- ✓ Speeds up weight and growth
- ✓ Leads to earlier productive life; conceive younger at 1st service as heifers
- ✓ Heifers born without assistance will become higher producing animals

Replacement of stillborn calves is a substantial cost to the dairy industry at more than \$125.3 million per year.

Source 2001 (ncbi.nlm.nih.gov/pubmed/11233037)

Sire Calving Ease (SCE) is the percentage of a sire's calves born during difficult calvings.

GOODWHONE

Mogul x Active x Laudan 60% Black
 HBN: HONLD000843570795 NASIS: CBGOODWHONE
BETA CASEIN: A1/A2 NAAB: 224H002550

Sire: Mountfield Ssi Dcy Mogul Dam: Campogallo Gala VG86
 MG Sire: Alpag Iron Active MG Dam: Campogallo Simona EX90

USDA-CDCB GENOMIC SIRE EVALUATION AUGUST 2019 DTRS 5665 HERDS 913 90% REL

MILK LBS	FAT LBS	FAT %	PROT LBS	PROT %
-579	50	0.27	17	0.13

USDA CDCB TYPE SUMMARY 08/2019

PTAT +1.52 91%R UDC+2.33 FLC+1.27 BSC +0.16 1885 D / 416 H

Stature	+0.58	Tall			
Strength	+0.14	Strong			
Body Depth	+0.02	Deep			
Dairy Form	+0.39	Open Rib			
Rump Angle	+0.82	Sloped			
Thurl Width	+0.62	Wide			
Rear Legs-Side View	-1.16	Posty			
Rear Legs-Rear View	+1.39	Straight			
Foot Angle	+0.89	Steep			
Feet & Legs Score	+1.27	High			
F. Udder Attachment	+2.59	Strong			
Rear Udder Height	+3.08	High			
Rear Udder Width	+2.83	Wide			
Udder Cleft	+0.75	Strong			
Udder Depth	+1.95	Shallow			
Front Teat Placement	+0.87	Close			
Rear Teat Placement	+0.77	Close			
Teat Length	+0.58	Long			

GOODWHONE DTR



HONDO 54778

Montross x Numero Uno x Robust 20% Black
 HBN: H0840003010353525 NASIS: STGHONDO
BETA CASEIN: A2/A2 NAAB: 551H003246

Sire: Bacon-Hill Montross Dam: View-Home Uno Hope EX92
 MG Sire: Amighetti Numero Uno MG Dam: Pine-Tree 2149 Robst 4846 VG86

USDA - CDCB GENOMIC SIRE EVALUATION | AUGUST 2019 | DTRS 0 HERDS 0 | 78% REL

MILK LBS	FAT LBS	FAT %	PROT LBS	PROT %
1403	66	0.05	54	0.04

USDA CDCB TYPE SUMMARY 08/2019

PTAT +1.83 80%R UDC+1.86 FLC+0.60 BSC +0.22 0 D / 0 H

Stature	+0.53	Tall			
Strength	+0.90	Strong			
Body Depth	+0.94	Deep			
Dairy Form	+1.45	Open Rib			
Rump Angle	+0.17	Sloped			
Thurl Width	+0.31	Wide			
Rear Legs-Side View	-1.61	Posty			
Rear Legs-Rear View	-0.09	Hock In			
Foot Angle	+1.11	Steep			
Feet & Legs Score	+0.80	High			
F. Udder Attachment	+1.61	Strong			
Rear Udder Height	+3.25	High			
Rear Udder Width	+2.99	Wide			
Udder Cleft	+1.42	Strong			
Udder Depth	+0.10	Shallow			
Front Teat Placement	+0.70	Close			
Rear Teat Placement	+0.78	Close			
Teat Length	+0.67	Long			

MGD: PINE TREE 2149 ROBST 4846



CALVING, HEALTH, FERTILITY USDA - CDCB EVALUATION

DAUGHTER PREGNANCY RATE	-0.2	87%
PRODUCTIVE LIFE	+2.9	87%
FERTILITY INDEX	-0.3	
LIVABILITY	+1.1	77%
SOMATIC CELL SCORE	2.85	90%
GESTATION LENGTH	-1	
SIRE CALVING EASE	5.2%	73%
DAUGHTER CALVING EASE	5.8%	60%
NET MERIT \$	482	

GTPI
2191

AUSTRALIAN INDICES (08/2019)

BPI	196	86%
HWI	166	77%
TWI	220	84%
OVERALL TYPE	105	82%
MAMMARY	107	82%
DAUGHTER FERTILITY	106	85%
HEAT TOLERANCE	98	38%

\$20.00 Conv

\$48.00 **SexedULTRA4M™**

CALVING, HEALTH, FERTILITY USDA - CDCB EVALUATION

DAUGHTER PREGNANCY RATE	+0.8	77%
PRODUCTIVE LIFE	+3.5	77%
FERTILITY INDEX	+0.9	
LIVABILITY	-1.1	72%
SOMATIC CELL SCORE	2.91	78%
GESTATION LENGTH	-1	
SIRE CALVING EASE	5.6%	95%
DAUGHTER CALVING EASE	3.9%	68%
NET MERIT \$	630	

GTPI
2452

AUSTRALIAN INDICES (08/2019)

BPI	186	68%
HWI	157	61%
TWI	163	67%
OVERALL TYPE	98	62%
MAMMARY	103	62%
DAUGHTER FERTILITY	103	59%
HEAT TOLERANCE	102	38%

\$22.00 Conv

\$50.00 **SexedULTRA4M™**

Bgp Modesty



HOORAH

Modesty x Halogen x Numero Uno

HBN: HOUSA000144036309

NASIS: STGHORAH

BETA CASEIN: A1/A2

NAAB: 551H003525

Sire: Bacon Hill Pety Modesty Dam: Ms Dds Halo Honey
 MG Sire: Cookiecutter Petron Halogen MG Dam: View Home Uno Hope EX92

USDA - CDCB GENOMIC SIRE EVALUATION | AUGUST 2019 | DTRS 0 HERDS 0 | 78% REL

MILK LBS	FAT LBS	FAT %	PROT LBS	PROT %
985	68	0.11	28	-0.01

USDA CDCB TYPE SUMMARY 08/2019

PTAT +2.03 79%R UDC+2.68 FLC+0.84 BSC +0.07 0 D / 0 H

			-2	-1	0	1	2
Stature	+1.64	Tall					
Strength	+0.16	Strong					
Body Depth	+0.23	Deep					
Dairy Form	+0.95	Open Rib					
Rump Angle	-0.72	High Pins					
Thurl Width	+0.02	Wide					
Rear Legs-Side View	+1.30	Sickle					
Rear Legs-Rear View	+0.52	Straight					
Foot Angle	+0.85	Steep					
Feet & Legs Score	+1.28	High					
F. Udder Attachment	+3.21	Strong					
Rear Udder Height	+3.34	High					
Rear Udder Width	+3.07	Wide					
Udder Cleft	+1.62	Strong					
Udder Depth	+2.85	Shallow					
Front Teat Placement	+2.00	Close					
Rear Teat Placement	+1.87	Close					
Teat Length	-0.47	Short					



MGD: VIEW-HOME UNO HOPE

Edg Noble



IMPERIAL



Noble x Director x AltaOak

60% Black

HBN: H0840003132350797

NASIS: STGIMPERIAL

BETA CASEIN: A2/A2

NAAB: 551H003812

Sire: Mr Spring Noble Dam: Edg 73837
 MG Sire: Mr Pre Director 57512 MG Dam: Edg Riley Oak 57627

USDA - CDCB GENOMIC SIRE EVALUATION | AUGUST 2019 | DTRS 0 HERDS 0 | 78% REL

MILK LBS	FAT LBS	FAT %	PROT LBS	PROT %
1528	81	0.08	65	0.06

USDA CDCB TYPE SUMMARY 08/2019

PTAT +1.92 75%R UDC+2.60 FLC+0.82 BSC -0.53 0 D / 0 H

			-2	-1	0	1	2
Stature	+0.04	Tall					
Strength	-0.15	Frail					
Body Depth	-0.29	Shallow					
Dairy Form	+1.17	Open Rib					
Rump Angle	-1.37	High Pins					
Thurl Width	+0.83	Wide					
Rear Legs-Side View	+0.33	Sickle					
Rear Legs-Rear View	+0.68	Straight					
Foot Angle	+0.70	Steep					
Feet & Legs Score	+0.76	High					
F. Udder Attachment	+2.48	Strong					
Rear Udder Height	+3.67	High					
Rear Udder Width	+3.38	Wide					
Udder Cleft	+0.90	Strong					
Udder Depth	+1.43	Shallow					
Front Teat Placement	+0.94	Close					
Rear Teat Placement	+0.90	Close					
Teat Length	-0.83	Short					



MGGGD: CO-VISTA ROBUST RILEY

CALVING, HEALTH, FERTILITY USDA - CDCB EVALUATION

DAUGHTER PREGNANCY RATE	+1.3	76%
PRODUCTIVE LIFE	+5.0	76%
FERTILITY INDEX	+1.5	
LIVABILITY	+2.8	69%
SOMATIC CELL SCORE	2.90	79%
GESTATION LENGTH	-2	
SIRE CALVING EASE	5.3%	73%
DAUGHTER CALVING EASE	2.3%	67%
NET MERIT \$	702	

GTPI
2482

AUSTRALIAN INDICES (08/2019)

BPI	247	67%
HWI	252	60%
TWI	233	66%
OVERALL TYPE	101	60%
MAMMARY	107	60%
DAUGHTER FERTILITY	113	57%
HEAT TOLERANCE	103	38%

\$36.00 Conv

\$66.00 SexedULTRA 4M

CALVING, HEALTH, FERTILITY USDA - CDCB EVALUATION

DAUGHTER PREGNANCY RATE	+2.4	72%
PRODUCTIVE LIFE	+8.2	72%
FERTILITY INDEX	+2.9	
LIVABILITY	+4.6	67%
SOMATIC CELL SCORE	2.62	74%
GESTATION LENGTH	-1	
SIRE CALVING EASE	7.9%	61%
DAUGHTER CALVING EASE	4.0%	56%
NET MERIT \$	991	

GTPI
2864

AUSTRALIAN INDICES (08/2019)

BPI	302	63%
HWI	251	56%
TWI	262	62%
OVERALL TYPE	98	510%
MAMMARY	104	51%
DAUGHTER FERTILITY	111	46%
HEAT TOLERANCE	83	38%



EcoFeed 103

\$100.00 SexedULTRA 4M

JUMPSTART



High Noon x Delta x Supersire

HBN: HO840003148918722

NASIS: STGJUMPSTART

BETA CASEIN: A1/A1

NAAB: 551H003972

Sire: Mr Detour High Noon

Dam: Farnear Jant Delta

MG Sire: Mr Mogul Delta 1427

MG Dam: Farnear Jada Janet VG85

USDA - CDCB GENOMIC SIRE EVALUATION | AUGUST 2019 | DTRS 0 HERDS 0 | 78% REL

MILK LBS	FAT LBS	FAT %	PROT LBS	PROT %
1675	86	0.08	67	0.06

USDA CDCB TYPE SUMMARY 08/2019

PTAT +1.46 73%R UDC+1.70 FLC+1.58 BSC -1.24 0 D / 0 H

			-2	-1	0	1	2
Stature	+0.10	Tall					
Strength	-0.82	Frail					
Body Depth	-0.75	Shallow					
Dairy Form	+1.30	Open Rib					
Rump Angle	-0.32	High Pins					
Thurl Width	+0.01	Wide					
Rear Legs-Side View	+0.11	Sickle					
Rear Legs-Rear View	+1.49	Straight					
Foot Angle	+0.94	Steep					
Feet & Legs Score	+1.50	High					
F. Udder Attachment	+1.43	Strong					
Rear Udder Height	+2.49	High					
Rear Udder Width	+2.29	Wide					
Udder Cleft	+0.57	Strong					
Udder Depth	+1.35	Shallow					
Front Teat Placement	+0.56	Close					
Rear Teat Placement	+0.16	Close					
Teat Length	-1.29	Short					

MGD: FARNEAR JADA JANET VG85



CALVING, HEALTH, FERTILITY USDA - CDCB EVALUATION

DAUGHTER PREGNANCY RATE	+1.2	71%
PRODUCTIVE LIFE	+8.8	72%
FERTILITY INDEX	+1.8	
LIVABILITY	+4.4	66%
SOMATIC CELL SCORE	2.75	73%
GESTATION LENGTH	+0	
SIRE CALVING EASE	5.0%	58%
DAUGHTER CALVING EASE	2.9%	55%
NET MERIT \$	1001	

GTPI
2797

EcoFeed 100

\$200.00 Sexed**ULTRA**4M™

LANCASTER

Penmanship x Shamrock x Garrett

80% Black

HBN: HOGBR954082142776

NASIS: CBLANCASTER

BETA CASEIN: A2/A2

NAAB: 522H004836

Sire: Sandy Valley I Penmanship

Dam: Prehen Shamrock Lady VG88

MG Sire: Ladys Manor PL Shamrock

MG Dam: Diepenhoek Model Lady 8

USDA - CDCB GENOMIC SIRE EVALUATION | AUGUST 2019 | DTRS 0 HERDS 0 | 78% REL

MILK LBS	FAT LBS	FAT %	PROT LBS	PROT %
561	46	0.09	31	0.05

USDA CDCB TYPE SUMMARY 08/2019

PTAT +0.81 77%R UDC+1.26 FLC+0.72 BSC -0.72 0 D / 0 H

			-2	-1	0	1	2
Stature	-0.45	Short					
Strength	-0.80	Frail					
Body Depth	-1.18	Shallow					
Dairy Form	-0.07	Tight					
Rump Angle	+0.02	Sloped					
Thurl Width	+0.11	Wide					
Rear Legs-Side View	+0.68	Sickle					
Rear Legs-Rear View	+0.23	Straight					
Foot Angle	+0.20	Steep					
Feet & Legs Score	+0.70	High					
F. Udder Attachment	+1.20	Strong					
Rear Udder Height	+0.95	High					
Rear Udder Width	+0.87	Wide					
Udder Cleft	+1.06	Strong					
Udder Depth	+1.58	Shallow					
Front Teat Placement	+0.68	Close					
Rear Teat Placement	+1.00	Close					
Teat Length	-0.59	Short					

DAM: PREHEN SHAMROCK LADY



CALVING, HEALTH, FERTILITY USDA - CDCB EVALUATION

DAUGHTER PREGNANCY RATE	+4.8	74%
PRODUCTIVE LIFE	+6.5	74%
FERTILITY INDEX	+4.3	
LIVABILITY	+3.9	68%
SOMATIC CELL SCORE	2.82	76%
GESTATION LENGTH	-1	
SIRE CALVING EASE	5.3%	62%
DAUGHTER CALVING EASE	2.8%	59%
NET MERIT \$	674	

GTPI
2441

AUSTRALIAN INDICES (08/2019)

BPI	333	67%
HWI	317	60%
TWI	256	65%
OVERALL TYPE	97	58%
MAMMARY	100	58%
DAUGHTER FERTILITY	123	55%
HEAT TOLERANCE	106	38%

\$18.00 Conv

\$48.00 Sexed**ULTRA**4M™

LANDSLIDE

Contender x Alta1stclass x McCutchen 45% Black
 HBN: HOCAN000012478085 NASIS: STGLANDSLIDE
BETA CASEIN: A1/A2 NAAB: 522H003685

Sire: Mr Super Contender Dam: OConnors 1st Class Laura
 MG Sire: Zahbulls Alta1stclass MG Dam: Snowbiz McCutchen Lottie VG87

USDA - CDCB GENOMIC SIRE EVALUATION | AUGUST 2019 | DTRS 0 HERDS 0 | 78% REL

MILK LBS	FAT LBS	FAT %	PROT LBS	PROT %
1072	63	0.08	44	0.04

USDA CDCB TYPE SUMMARY 08/2019

PTAT +2.83 75%R UDC+2.74 FLC+1.07 BSC +1.60 0 D / 0 H

			-2	-1	0	1	2
Stature	+3.03	Tall					
Strength	+1.82	Strong					
Body Depth	+1.67	Deep					
Dairy Form	+1.81	Open Rib					
Rump Angle	-0.15	High Pins					
Thurl Width	+1.84	Wide					
Rear Legs-Side View	+0.05	Sickle					
Rear Legs-Rear View	+0.98	Straight					
Foot Angle	+1.91	Steep					
Feet & Legs Score	+1.70	High					
F. Udder Attachment	+3.69	Strong					
Rear Udder Height	+3.79	High					
Rear Udder Width	+3.49	Wide					
Udder Cleft	+2.00	Strong					
Udder Depth	+3.06	Shallow					
Front Teat Placement	+1.96	Close					
Rear Teat Placement	+1.84	Close					
Teat Length	-0.42	Short					

MGD: SNOWBIZ MCCUTCHEN LOTTIE



CALVING, HEALTH, FERTILITY USDA - CDCB EVALUATION

DAUGHTER PREGNANCY RATE	-0.2	72%
PRODUCTIVE LIFE	+4.0	73%
FERTILITY INDEX	-0.4	
LIVABILITY	-0.8	67%
SOMATIC CELL SCORE	2.64	74%
GESTATION LENGTH	-2	
SIRE CALVING EASE	6.3%	71%
DAUGHTER CALVING EASE	4.7%	56%
NET MERIT \$	600	

GTPI
2469

AUSTRALIAN INDICES (08/2019)

BPI	279	66%
HWI	241	59%
TWI	282	65%
OVERALL TYPE	104	57%
MAMMARY	107	57%
DAUGHTER FERTILITY	106	53%
HEAT TOLERANCE	97	38%

\$26.00 Conv

\$60.00 SexedULTRA4M

LEDoux

Mega-Duke x Monterey x Grafeeti 15% Black
 HBN: H0840003132350355 NASIS: STGLEDOUX
BETA CASEIN: A2/A2 NAAB: 551H003508

Sire: Mr Mega Duke Dam: Ladys Manor Mntry Lady
 MG Sire: View Home Monterey MG Dam: Ladys-Manor Graf La-La-VG-86

USDA - CDCB GENOMIC SIRE EVALUATION | AUGUST 2019 | DTRS 0 HERDS 0 | 78% REL

MILK LBS	FAT LBS	FAT %	PROT LBS	PROT %
874	52	0.07	39	0.04

USDA CDCB TYPE SUMMARY 08/2019

PTAT +1.92 77%R UDC+2.39 FLC+1.13 BSC -0.17 0 D / 0 H

			-2	-1	0	1	2
Stature	+1.36	Tall					
Strength	-0.13	Frail					
Body Depth	+0.05	Deep					
Dairy Form	+1.36	Open Rib					
Rump Angle	-0.11	High Pins					
Thurl Width	+1.45	Wide					
Rear Legs-Side View	+0.54	Sickle					
Rear Legs-Rear View	+0.85	Straight					
Foot Angle	+0.95	Steep					
Feet & Legs Score	+1.46	High					
F. Udder Attachment	+2.06	Strong					
Rear Udder Height	+3.37	High					
Rear Udder Width	+3.10	Wide					
Udder Cleft	+2.29	Strong					
Udder Depth	+1.89	Shallow					
Front Teat Placement	+1.66	Close					
Rear Teat Placement	+2.07	Close					
Teat Length	+0.01	Long					

DAM: LADYS MANOR MNTRY LADY



CALVING, HEALTH, FERTILITY USDA - CDCB EVALUATION

DAUGHTER PREGNANCY RATE	+2.3	74%
PRODUCTIVE LIFE	+5.5	75%
FERTILITY INDEX	+2.4	
LIVABILITY	+2.5	68%
SOMATIC CELL SCORE	2.87	77%
GESTATION LENGTH	-1	
SIRE CALVING EASE	5.4%	79%
DAUGHTER CALVING EASE	2.7%	67%
NET MERIT \$	681	

GTPI
2509

AUSTRALIAN INDICES (08/2019)

BPI	255	66%
HWI	234	59%
TWI	238	65%
OVERALL TYPE	102	57%
MAMMARY	107	57%
DAUGHTER FERTILITY	111	53%
HEAT TOLERANCE	101	38%

\$20.00 Conv

\$50.00 SexedULTRA4M

UNLEASH THE POWER OF GENOMIC TESTING

WITH
ST Genetics®

ALL STANDARD MARKER RESULTS CAN BE
INCLUDED WITH YOUR GENOMIC RESULTS

NEW

Beta Casein (A2A2)
Beta Lactoglobulin
Kappa Casein (AB)
Kappa Casein (AE)

Citrullinemia
DUMPS
SMA
HCD

BLAD
CVM
SDM

Fishy Off-Flavor
Dominant Red
Brachyspina

New standard medium density chip, making it the most reliable test in the market. 30- to 45-day turnaround time following submission.

WE OFFER GENOMIC TESTING ON BOTH
THE BPI AND TPI INDEXES

GENOMIC TESTING PROVIDED BY
GENETICVISIONS-ST®

Talk to your ST Genetics Australia
representative for more details on
Genomic Testing your herd.



LEGO

Silver x Numero Uno x Snowman 30% Black
HBN: HOCAN000012111880 NASIS: CBLEGO
BETA CASEIN: A2/A2 NAAB: 224H004523

Sire: Seagull Bay Silver Dam: Snowbiz N Uno Lena
MG Sire: Amighetti Numero Uno MG Dam: Freurehaven FGS Lucy VG86

USDA - CDCB GENOMIC SIRE EVALUATION | AUGUST 2019 | DTRS 0 HERDS 0 | 78% REL

MILK LBS	FAT LBS	FAT %	PROT LBS	PROT %
718	76	0.18	41	0.07

USDA CDCB TYPE SUMMARY 08/2019

PTAT +1.47 80%R UDC+1.77 FLC+1.00 BSC +0.39 0 D / 0 H

			-2	-1	0	1	2
Stature	+2.03	Tall					
Strength	+0.45	Strong					
Body Depth	+0.14	Deep					
Dairy Form	+0.76	Open Rib					
Rump Angle	+1.77	Sloped					
Thurl Width	-0.33	Narrow					
Rear Legs-Side View	-0.58	Posty					
Rear Legs-Rear View	+1.15	Straight					
Foot Angle	+2.15	Steep					
Feet & Legs Score	+1.24	High					
F. Udder Attachment	+1.87	Strong					
Rear Udder Height	+2.87	High					
Rear Udder Width	+2.64	Wide					
Udder Cleft	+0.69	Strong					
Udder Depth	+2.09	Shallow					
Front Teat Placement	+0.76	Close					
Rear Teat Placement	+0.30	Close					
Teat Length	+0.42	Long					

DAM: SNOWBIZ N UNO LENA VG85



CALVING, HEALTH, FERTILITY USDA - CDCB EVALUATION

DAUGHTER PREGNANCY RATE	+1.3	76%
PRODUCTIVE LIFE	+3.6	76%
FERTILITY INDEX	+1.4	
LIVABILITY	-0.2	72%
SOMATIC CELL SCORE	2.79	78%
GESTATION LENGTH	-1	
SIRE CALVING EASE	7.3%	78%
DAUGHTER CALVING EASE	5.3%	68%
NET MERIT \$	648	



EcoFeed 101

\$16.00 Conv

GTPI
2453

AUSTRALIAN INDICES (08/2019)

BPI	236	70%
HWI	198	63%
TWI	215	69%
OVERALL TYPE	99	66%
MAMMARY	101	66%
DAUGHTER FERTILITY	107	61%
HEAT TOLERANCE	98	38%



LUMINA

NEW

Charl x Director x Davinci 90% Black
HBN: H0840003146617347 NASIS: STGLUMINA
BETA CASEIN: A1/A2 NAAB: 551H003873

Sire: Hurtgenlea Richard Charl Dam: St Gen 77027
MG Sire: Mr Pre Director 57512 MG Dam: Peak Paxton Dav 1008

USDA - CDCB GENOMIC SIRE EVALUATION | AUGUST 2019 | DTRS 0 HERDS 0 | 78% REL

MILK LBS	FAT LBS	FAT %	PROT LBS	PROT %
1033	79	0.14	50	0.07

USDA CDCB TYPE SUMMARY 08/2019

PTAT +1.56 75%R UDC+2.24 FLC+0.26 BSC -0.21 0 D / 0 H

			-2	-1	0	1	2
Stature	+0.46	Tall					
Strength	-0.19	Frail					
Body Depth	-0.31	Shallow					
Dairy Form	+0.75	Open Rib					
Rump Angle	-0.40	High Pins					
Thurl Width	+1.17	Wide					
Rear Legs-Side View	+0.86	Sickle					
Rear Legs-Rear View	+0.03	Straight					
Foot Angle	+0.36	Steep					
Feet & Legs Score	+0.39	High					
F. Udder Attachment	+2.69	Strong					
Rear Udder Height	+2.67	High					
Rear Udder Width	+2.46	Wide					
Udder Cleft	+0.79	Strong					
Udder Depth	+2.13	Shallow					
Front Teat Placement	+1.44	Close					
Rear Teat Placement	+1.08	Close					
Teat Length	-0.92	Short					

ST GEN CHARL LUMINA



CALVING, HEALTH, FERTILITY USDA - CDCB EVALUATION

DAUGHTER PREGNANCY RATE	+3.3	71%
PRODUCTIVE LIFE	+9.3	72%
FERTILITY INDEX	+3.6	
LIVABILITY	+5.4	66%
SOMATIC CELL SCORE	2.59	74%
GESTATION LENGTH	-1	
SIRE CALVING EASE	6.0%	59%
DAUGHTER CALVING EASE	3.5%	56%
NET MERIT \$	965	



EcoFeed 103

\$75.00 SexedULTRA4M

GTPI
2780

AUSTRALIAN INDICES (08/2019)

BPI	329	63%
HWI	304	56%
TWI	285	61%
OVERALL TYPE	98	50%
MAMMARY	104	50%
DAUGHTER FERTILITY	114	45%
HEAT TOLERANCE	98	38%



MADDEN

Chief x Monterey x Numero Uno

75% Black

HBN: HO840003123606833

NASIS: STGMADDEN

BETA CASEIN: A2/A2

NAAB: 551H003579

Sire: Stantons Cheif

Dam: Stantons Bee Molly VG85

MG Sire: View Home Monterey

MG Dam: Ri-Val-Re Num Uno Bee

USDA - CDCB GENOMIC SIRE EVALUATION | AUGUST 2019 | DTRS 0 HERDS 0 | 78% REL

MILK LBS	FAT LBS	FAT %	PROT LBS	PROT %
473	68	0.18	35	0.07

USDA CDCB TYPE SUMMARY 08/2019

PTAT +2.35 76%R UDC+2.29 FLC+0.91 BSC +0.79 0 D / 0 H

			-2	-1	0	1	2
Stature	+2.26	Tall					
Strength	+0.74	Strong					
Body Depth	+0.96	Deep					
Dairy Form	+1.50	Open Rib					
Rump Angle	-0.59	High Pins					
Thurl Width	+2.15	Wide					
Rear Legs-Side View	+1.14	Sickle					
Rear Legs-Rear View	+0.79	Straight					
Foot Angle	+1.07	Steep					
Feet & Legs Score	+1.44	High					
F. Udder Attachment	+2.53	Strong					
Rear Udder Height	+3.23	High					
Rear Udder Width	+2.97	Wide					
Udder Cleft	+1.54	Strong					
Udder Depth	+2.67	Shallow					
Front Teat Placement	+1.05	Close					
Rear Teat Placement	+1.23	Close					
Teat Length	+0.02	Long					

DAM STANTONS BEE MOLLY VG85



Frank Robinson



MAROON



Dynasty x Delta x Miles

70% Black

HBN: HO840003132353432

NASIS: STGMAROON

BETA CASEIN: A1/A2

NAAB: 551H003749

Sire: Mr Rubicon Dynasty

Dam: Peak Many Delta 1433

MG Sire: Mr Mogul Delta 1427

MG Dam: Leaderwin Miles Many Vg85

USDA - CDCB GENOMIC SIRE EVALUATION | AUGUST 2019 | DTRS 0 HERDS 0 | 78% REL

MILK LBS	FAT LBS	FAT %	PROT LBS	PROT %
824	114	0.30	56	0.11

USDA CDCB TYPE SUMMARY 04/2019

PTAT +1.83 76%R UDC+2.43 FLC+1.43 BSC +0.70 0 D / 0 H

			-2	-1	0	1	2
Stature	+0.80	Tall					
Strength	+0.81	Strong					
Body Depth	+0.35	Deep					
Dairy Form	+0.63	Open Rib					
Rump Angle	-0.81	High Pins					
Thurl Width	+1.18	Wide					
Rear Legs-Side View	-0.81	Posty					
Rear Legs-Rear View	+1.48	Straight					
Foot Angle	+2.01	Steep					
Feet & Legs Score	+1.38	High					
F. Udder Attachment	+2.72	Strong					
Rear Udder Height	+3.20	High					
Rear Udder Width	+2.94	Wide					
Udder Cleft	+1.64	Strong					
Udder Depth	+1.84	Shallow					
Front Teat Placement	+1.17	Close					
Rear Teat Placement	+1.28	Close					
Teat Length	-0.67	Short					

ST GEN DYNASTY MAROON



Frank Robinson

CALVING, HEALTH, FERTILITY USDA - CDCB EVALUATION

DAUGHTER PREGNANCY RATE	+0.0	72%
PRODUCTIVE LIFE	+5.1	73%
FERTILITY INDEX	+0.3	
LIVABILITY	+1.4	67%
SOMATIC CELL SCORE	2.59	75%
GESTATION LENGTH	+1	
SIRE CALVING EASE	7.8%	62%
DAUGHTER CALVING EASE	4.9%	56%
NET MERIT \$	658	

GTPI
2475

AUSTRALIAN INDICES (08/2019)

BPI	310	65%
HWI	264	58%
TWI	291	64%
OVERALL TYPE	101	56%
MAMMARY	104	56%
DAUGHTER FERTILITY	108	51%
HEAT TOLERANCE	95	38%

\$20.00 Conv

CALVING, HEALTH, FERTILITY USDA - CDCB EVALUATION

DAUGHTER PREGNANCY RATE	+0.4	73%
PRODUCTIVE LIFE	+6.9	73%
FERTILITY INDEX	+0.4	
LIVABILITY	+3.5	67%
SOMATIC CELL SCORE	2.72	75%
GESTATION LENGTH	+0	
SIRE CALVING EASE	7.5%	62%
DAUGHTER CALVING EASE	4.1%	57%
NET MERIT \$	989	

GTPI
2802

AUSTRALIAN INDICES (08/2019)

BPI	269	62%
HWI	207	55%
TWI	272	60%
OVERALL TYPE	103	49%
MAMMARY	106	49%
DAUGHTER FERTILITY	103	45%
HEAT TOLERANCE	98	38%



EcoFeed 101

\$70.00 SexedULTRA4M

High Noon x Jedi x Robust

20% Black

HBN: H0840003146616447

NASIS: STGMETZ

BETA CASEIN: A2/A2

NAAB: 551H003834

Sire: Mr Detour High Noon
MG Sire: S-S-I Montross Jedi

Dam: Ms Delicious Jedi 35127
MG Dam: Miss Ocd Robst Delicious VG87

USDA - CDCB GENOMIC SIRE EVALUATION | AUGUST 2019 | DTRS 0 HERDS 0 | 78% REL

MILK LBS	FAT LBS	FAT%	PROT LBS	PROT%
1246	74	0.10	64	0.09

USDA CDCB TYPE SUMMARY 08/2019

PTAT +1.97 74%R UDC+2.18 FLC+0.99 BSC -0.28 0 D / 0 H

			-2	-1	0	1	2
Stature	+1.10	Tall					
Strength	-0.17	Frail					
Body Depth	-0.42	Shallow					
Dairy Form	+1.11	Open Rib					
Rump Angle	-0.28	High Pins					
Thurl Width	+0.85	Wide					
Rear Legs-Side View	-0.34	Posty					
Rear Legs-Rear View	+0.94	Straight					
Foot Angle	+1.29	Steep					
Feet & Legs Score	+1.14	High					
F. Udder Attachment	+2.18	Strong					
Rear Udder Height	+2.94	High					
Rear Udder Width	+2.70	Wide					
Udder Cleft	+1.10	Strong					
Udder Depth	+2.45	Shallow					
Front Teat Placement	+0.54	Close					
Rear Teat Placement	+0.34	Close					
Teat Length	-0.55	Short					

MGD: MISS OCD ROBST DELICIOUS



CALVING, HEALTH, FERTILITY USDA - GDCB EVALUATION

DAUGHTER PREGNANCY RATE	+3.0	73%
PRODUCTIVE LIFE	+9.0	73%
FERTILITY INDEX	+3.1	
LIVABILITY	+4.1	67%
SOMATIC CELL SCORE	2.66	75%
GESTATION LENGTH	-1	
SIRE CALVING EASE	6.8%	59%
DAUGHTER CALVING EASE	3.6%	56%
NET MERIT \$	950	

GTPI
2824



EcoFeed 103

\$70.00 SexedULTRA 4M™

Wintersell

SexedULTRA 4M™

MILO

Oman x Goldwyn x Juror Ford

95% Black

HBN: H0GBR000000645404

NASIS: CBWINTERSELL

BETA CASEIN: A2/A2

NAAB: 224H001090

Sire: Obee Manfred Justice
MG Sire: Braedale Goldwyn

Dam: Wintersell Mila 10 EX93
MG Dam: Wintersell Mila 6 EX94 3E

DATAGENE GENOMIC SIRE EVALUATION | AUGUST 2019 92% REL

MILK LTR	FAT KGS	FAT %	PROT KGS	PROT %
300	15	0.03	5	-0.05

AUSTRALIAN INDICIES 08/2019

OVERALL TYPE	99	MAMMARY SYSTEM	99
STATURE	96	UDDER DEPTH	104
BONE QUALITY	99	FORE ATTACHMENT	100
LOIN STRENGTH	100	REAR ATTACH HEIGHT	101
ANGULARITY	97	REAR ATTACH WIDTH	96
MUZZLE WIDTH	99	CENTRE LIGAMENT	101
BODY DEPTH	97	TEAT PLACE FORE	100
CHEST WIDTH	99	TEAT PLACE REAR	98
PIN SET	103	UDDER TEXTURE	94
FOOT ANGLE	105	TEAT LENGTH	100
REAR SET	89		
REAR SET REAR VIEW	98		

MILO DAUGHTER



AUSTRALIAN INDICES (08/2019)

BPI	155	74%
HWI	159	69%
TWI	133	74%
OVERALL TYPE	99	70%
MAMMARY	99	70%
DAUGHTER FERTILITY	107	84%
HEAT TOLERANCE	104	38%
CALVING EASE	103	95%

BPI
155

\$15.00 Conv

\$50.00 SexedULTRA 4M™

MITCHELL 53

Mitchell x Bombero x Mayfield

5% Black

HBN: HO840003138948156

NASIS: AIMITCHELL

BETA CASEIN: A1/A2

NAAB: 515H000318

Sire: Wet Tatum Mitchell

Dam: Aurora Bombero 15902

MG Sire: Richmond Fd El Bombero

MG Dam: Aurora Mayfield 13965

USDA - CDCB GENOMIC SIRE EVALUATION | AUGUST 2019 | DTRS 0 HERDS 0 | 78% REL

MILK LBS	FAT LBS	FAT %	PROT LBS	PROT %
1307	79	0.11	54	0.05

USDA CDCB TYPE SUMMARY 08/2019

PTAT +3.19 78%R UDC+2.83 FLC+2.07 BSC +0.72 0 D / 0 H

			-2	-1	0	1	2
Stature	+2.36	Tall					
Strength	+1.23	Strong					
Body Depth	+1.68	Deep					
Dairy Form	+2.72	Open Rib					
Rump Angle	-0.19	High Pins					
Thurl Width	+2.57	Wide					
Rear Legs-Side View	+0.28	Sickle					
Rear Legs-Rear View	+1.80	Straight					
Foot Angle	+2.28	Steep					
Feet & Legs Score	+2.53	High					
F. Udder Attachment	+2.70	Strong					
Rear Udder Height	+4.84	High					
Rear Udder Width	+4.45	Wide					
Udder Cleft	+1.82	Strong					
Udder Depth	+1.66	Shallow					
Front Teat Placement	+1.11	Close					
Rear Teat Placement	+1.06	Close					
Teat Length	-0.31	Short					

MOOVIN RC

Avalanche*RC x Bradnick x Goldwyn

80% Black

HBN: HOCAN000012873743

NASIS: STGMOOVIN

BETA CASEIN: A1/A2

NAAB: 551H003855

Sire: Dymenthalm Mr Apples Avalanche

Dam: Lindenright Bradnick Moovin

MG Sire: Reagancrest GVS Bradnick

MG Dam: Lindenright Goldwyn Mystical 7

USDA - CDCB GENOMIC SIRE EVALUATION | AUGUST 2019 | DTRS 0 HERDS 0 | 78% REL

MILK LBS	FAT LBS	FAT %	PROT LBS	PROT %
393	24	0.03	20	0.03

USDA CDCB TYPE SUMMARY 08/2019

PTAT +4.58 79%R UDC+4.03 FLC+3.18 BSC +2.40 0 D / 0 H

			-2	-1	0	1	2
Stature	+4.50	Tall					
Strength	+2.52	Strong					
Body Depth	+2.63	Deep					
Dairy Form	+2.51	Open Rib					
Rump Angle	+0.91	Sloped					
Thurl Width	+3.05	Wide					
Rear Legs-Side View	-0.52	Posty					
Rear Legs-Rear View	+3.70	Straight					
Foot Angle	+3.78	Steep					
Feet & Legs Score	+3.83	High					
F. Udder Attachment	+4.94	Strong					
Rear Udder Height	+5.94	High					
Rear Udder Width	+5.46	Wide					
Udder Cleft	+3.30	Strong					
Udder Depth	+4.33	Shallow					
Front Teat Placement	+1.67	Close					
Rear Teat Placement	+2.21	Close					
Teat Length	+0.60	Long					

MGD: AURORA MAYFIELD 13965



LINDENRIGHT MOOVIN RC



CALVING, HEALTH, FERTILITY USDA - CDCB EVALUATION

DAUGHTER PREGNANCY RATE	+1.1	74%
PRODUCTIVE LIFE	+5.2	74%
FERTILITY INDEX	+1.6	
LIVABILITY	+2.0	67%
SOMATIC CELL SCORE	2.62	77%
GESTATION LENGTH	-2	
SIRE CALVING EASE	7.0%	72%
DAUGHTER CALVING EASE	4.4%	67%
NET MERIT \$	814	

GTPI
2764

AUSTRALIAN INDICES (08/2019)

BPI	214	65%
HWI	182	57%
TWI	206	63%
OVERALL TYPE	102	53%
MAMMARY	103	53%
DAUGHTER FERTILITY	106	48%
HEAT TOLERANCE	100	38%

\$26.00 Conv

\$75.00 SexedULTRA4M

CALVING, HEALTH, FERTILITY USDA - CDCB EVALUATION

DAUGHTER PREGNANCY RATE	-2.4	74%
PRODUCTIVE LIFE	+2.4	74%
FERTILITY INDEX	-2.1	
LIVABILITY	-0.7	67%
SOMATIC CELL SCORE	2.93	79%
GESTATION LENGTH	+0	
SIRE CALVING EASE	10.7%	62%
DAUGHTER CALVING EASE	5.6%	59%
NET MERIT \$	294	

GTPI
2243

\$100.00 SexedULTRA4M

4M[®] + Beef on DAIRY



Are you confident you are using the right genetics to maximize the profit of your dairy?



Heifer Inventory Management

Evaluate the impact of excess heifer calves. Get control of your replacements and ensure the most profitable population will be entering your herd.



Rapid Genetic Improvement

Create genetic progress faster while improving selection intensity by using STgenetics Beef on Dairy on your less profitable animals and SexedULTRA4M[®] on your top performers.



Crossbred Calf Value

STgenetics Beef on Dairy sires offer a competitive advantage in the marketing of calves with the carcass merit value desired for downstream premiums.



STgenetics Beef on Dairy sires available in **SexedULTRA4M[®]** male semen in the following breeds: ANGUS, BRANGUS, BRAUNVIEH, CHAROLAIS, HEREFORD, WAGYU, LIMOUSIN and SIMMENTAL.

NASHVILLE



Dynasty x Nominee x Robust

20% Black

HBN: H0840003132353072

NASIS: STGNASHVILLE

BETA CASEIN: A2/A2

NAAB: 551H003600

Sire: Mr Rubicon Dynasty
MG Sire: De-Su NomineeDam: Ms Delicious Nom 60028
MG Dam: Miss Ocd Robst Delicious VG87

USDA - CDCB GENOMIC SIRE EVALUATION | AUGUST 2019 | DTRS 0 HERDS 0 | 78% REL

MILK LBS	FAT LBS	FAT %	PROT LBS	PROT %
2124	96	0.06	80	0.05

USDA CDCB TYPE SUMMARY 08/2019

PTAT +1.55 76%R UDC+1.54 FLC+1.53 BSC -0.81 0 D / 0 H

			-2	-1	0	1	2
Stature	+0.37	Tall					
Strength	-0.44	Frail					
Body Depth	-0.55	Shallow					
Dairy Form	+1.32	Open Rib					
Rump Angle	-0.97	High Pins					
Thurl Width	+0.49	Wide					
Rear Legs-Side View	+0.69	Sickle					
Rear Legs-Rear View	+1.39	Straight					
Foot Angle	+1.13	Steep					
Feet & Legs Score	+1.52	High					
F. Udder Attachment	+1.08	Strong					
Rear Udder Height	+2.37	High					
Rear Udder Width	+2.18	Wide					
Udder Cleft	+1.38	Strong					
Udder Depth	+0.80	Shallow					
Front Teat Placement	+1.07	Close					
Rear Teat Placement	+1.15	Close					
Teat Length	-1.16	Short					

MGGD: OCD PLANET DANICA



CALVING, HEALTH, FERTILITY USDA - CDCB EVALUATION

DAUGHTER PREGNANCY RATE	+1.6	74%
PRODUCTIVE LIFE	+8.8	74%
FERTILITY INDEX	+2.0	
LIVABILITY	+4.3	68%
SOMATIC CELL SCORE	2.69	75%
GESTATION LENGTH	+0	
SIRE CALVING EASE	7.4%	70%
DAUGHTER CALVING EASE	4.2%	68%
NET MERIT \$	1057	

GTPI
2897

AUSTRALIAN INDICES (08/2019)

BPI	241	64%
HWI	185	57%
TWI	174	63%
OVERALL TYPE	93	52%
MAMMARY	100	52%
DAUGHTER FERTILITY	106	48%
HEAT TOLERANCE	96	38%



EcoFeed 105

\$120.00 SexedULTRA4M™

NIGHTLIFE 31444

Montross x Numero Uno x Robust

40% Black

HBN: H0840003126775449

NASIS: STGNIGHTLIFE

BETA CASEIN: A2/A2

NAAB: 551H003231

Sire: Bacon-Hill Montross
MG Sire: Amighetti Numero UnoDam: Ms Delicious Nightout VG86
MG Dam: Miss Ocd Robst Delicious VG87

USDA - CDCB GENOMIC SIRE EVALUATION | AUGUST 2019 | DTRS 0 HERDS 0 | 78% REL

MILK LBS	FAT LBS	FAT %	PROT LBS	PROT %
2124	64	-0.05	68	0.01

USDA CDCB TYPE SUMMARY 08/2019

PTAT +1.84 80%R UDC+1.95 FLC+0.57 BSC +0.60 0 D / 0 H

			-2	-1	0	1	2
Stature	+0.84	Tall					
Strength	+1.26	Strong					
Body Depth	+1.06	Deep					
Dairy Form	+1.72	Open Rib					
Rump Angle	-0.04	High Pins					
Thurl Width	+1.32	Wide					
Rear Legs-Side View	-0.66	Posty					
Rear Legs-Rear View	+0.23	Straight					
Foot Angle	+1.16	Steep					
Feet & Legs Score	+0.74	High					
F. Udder Attachment	+1.63	Strong					
Rear Udder Height	+3.43	High					
Rear Udder Width	+3.16	Wide					
Udder Cleft	+2.00	Strong					
Udder Depth	+0.04	Shallow					
Front Teat Placement	+1.38	Close					
Rear Teat Placement	+1.78	Close					
Teat Length	-0.77	Short					

MGGD: OCD PLANET DANICA



CALVING, HEALTH, FERTILITY USDA - CDCB EVALUATION

DAUGHTER PREGNANCY RATE	+0.3	76%
PRODUCTIVE LIFE	+5.0	77%
FERTILITY INDEX	+0.7	
LIVABILITY	+1.2	72%
SOMATIC CELL SCORE	2.86	78%
GESTATION LENGTH	-2	
SIRE CALVING EASE	6.0%	95%
DAUGHTER CALVING EASE	4.6%	68%
NET MERIT \$	719	

GTPI
2545

AUSTRALIAN INDICES (08/2019)

BPI	155	67%
HWI	129	61%
TWI	143	66%
OVERALL TYPE	99	61%
MAMMARY	105	61%
DAUGHTER FERTILITY	103	57%
HEAT TOLERANCE	101	38%

\$50.00 SexedULTRA4M™

Mr Spring



NITRO

AltaSpring x Numero Uno x Robust 50% Black
 HBN: H0840003132349859 NASIS: STGNITRO
BETA CASEIN: A1/A2 NAAB: 551H003413

Sire: Westenrade AltaSpring Dam: Ms Delicious Nightout VG86
 MG Sire: Amighetti Numero Uno MG Dam: Miss Ocd Robst Delicious VG87

USDA - CDCB GENOMIC SIRE EVALUATION | AUGUST 2019 | DTRS 0 HERDS 0 | 78% REL

MILK LBS	FAT LBS	FAT %	PROT LBS	PROT %
1649	68	0.02	55	0.02

USDA CDCB TYPE SUMMARY 08/2019

PTAT +2.08 80%R UDC+3.10 FLC+0.83 BSC -0.13 0 D / 0 H

			-2	-1	0	1	2
Stature	+0.85	Tall					
Strength	+0.04	Strong					
Body Depth	-0.10	Shallow					
Dairy Form	+1.22	Open Rib					
Rump Angle	+0.40	Sloped					
Thurl Width	+1.32	Wide					
Rear Legs-Side View	-0.50	Posty					
Rear Legs-Rear View	+0.83	Straight					
Foot Angle	+1.10	Steep					
Feet & Legs Score	+0.92	High					
F. Udder Attachment	+2.92	Strong					
Rear Udder Height	+4.37	High					
Rear Udder Width	+4.02	Wide					
Udder Cleft	+1.73	Strong					
Udder Depth	+2.07	Shallow					
Front Teat Placement	+1.12	Close					
Rear Teat Placement	+1.10	Close					
Teat Length	-0.16	Short					

DAM: MS DELICIOUS NIGHTOUT



CALVING, HEALTH, FERTILITY USDA - CDCB EVALUATION

DAUGHTER PREGNANCY RATE	+0.7	76%
PRODUCTIVE LIFE	+6.0	76%
FERTILITY INDEX	+1.0	
LIVABILITY	+0.9	71%
SOMATIC CELL SCORE	2.65	78%
GESTATION LENGTH	-1	
SIRE CALVING EASE	8.8%	89%
DAUGHTER CALVING EASE	5.2%	68%
NET MERIT \$	771	

GTPI
2631

AUSTRALIAN INDICES (08/2019)

BPI	306	69%
HWI	271	62%
TWI	305	68%
OVERALL TYPE	103	64%
MAMMARY	108	64%
DAUGHTER FERTILITY	109	61%
HEAT TOLERANCE	95	38%

\$20.00 Conv

\$55.00 SexedULTRA4M

Farnear Mdsty



NO CAN DO

Modesty x JoSuper x Numero Uno 60% Black
 HBN: H0840003137942562 NASIS: STGNOCANDO
BETA CASEIN: A2/A2 NAAB: 551H003623

Sire: Bacon Hill Pety Modesty Dam: Farnear Nicki VG85
 MG Sire: Uecker Supersire JoSuper MG Dam: Edg Lorette Uno 2198 VG-88

USDA - CDCB GENOMIC SIRE EVALUATION | AUGUST 2019 | DTRS 0 HERDS 0 | 78% REL

MILK LBS	FAT LBS	FAT %	PROT LBS	PROT %
1269	77	0.11	55	0.06

USDA CDCB TYPE SUMMARY 08/2019

PTAT +2.35 79%R UDC+2.40 FLC+1.29 BSC -0.18 0 D / 0 H

			-2	-1	0	1	2
Stature	+1.70	Tall					
Strength	+0.17	Strong					
Body Depth	+0.31	Deep					
Dairy Form	+1.67	Open Rib					
Rump Angle	-0.43	High Pins					
Thurl Width	+0.41	Wide					
Rear Legs-Side View	+1.19	Sickle					
Rear Legs-Rear View	+0.90	Straight					
Foot Angle	+1.14	Steep					
Feet & Legs Score	+1.73	High					
F. Udder Attachment	+2.93	Strong					
Rear Udder Height	+3.08	High					
Rear Udder Width	+2.83	Wide					
Udder Cleft	+1.31	Strong					
Udder Depth	+2.77	Shallow					
Front Teat Placement	+1.63	Close					
Rear Teat Placement	+1.49	Close					
Teat Length	-0.87	Short					

MGD: EDG LORETTE UNO 2198



CALVING, HEALTH, FERTILITY USDA - CDCB EVALUATION

DAUGHTER PREGNANCY RATE	+0.7	76%
PRODUCTIVE LIFE	+6.3	75%
FERTILITY INDEX	+1.2	
LIVABILITY	+3.7	69%
SOMATIC CELL SCORE	3.07	78%
GESTATION LENGTH	-2	
SIRE CALVING EASE	5.6%	63%
DAUGHTER CALVING EASE	3.0%	61%
NET MERIT \$	841	

GTPI
2652

AUSTRALIAN INDICES (08/2019)

BPI	216	67%
HWI	184	61%
TWI	221	66%
OVERALL TYPE	100	61%
MAMMARY	105	61%
DAUGHTER FERTILITY	104	57%
HEAT TOLERANCE	98	38%

\$24.00 Conv

PACO

Helix x Rubicon x Bob

20% Black

HBN: HO84000313235801

NASIS: STGPACO

BETA CASEIN: A1/A2

NAAB: 551H003594

Sire: Aot Silver Helix
MG Sire: Edg RubiconDam: Welcome-Tel Rubicon Pipa VG87
MG Dam: Welcome-Tel Bob Patia

USDA - CDCB GENOMIC SIRE EVALUATION | AUGUST 2019 | DTRS 0 HERDS 0 | 78% REL

MILK LBS	FAT LBS	FAT %	PROT LBS	PROT %
1076	125	0.30	62	0.10

USDA CDCB TYPE SUMMARY 08/2019

PTAT +1.79 78%R UDC+1.86 FLC+1.56 BSC -0.09 0 D / 0 H

Stature	+1.12	Tall	-2	-1	0	1	2
Strength	+0.17	Strong					
Body Depth	+0.19	Deep					
Dairy Form	+1.15	Open Rib					
Rump Angle	-0.91	High Pins					
Thurl Width	+0.33	Wide					
Rear Legs-Side View	+1.18	Sickle					
Rear Legs-Rear View	+1.60	Straight					
Foot Angle	+1.44	Steep					
Feet & Legs Score	+1.67	High					
F. Udder Attachment	+2.10	Strong					
Rear Udder Height	+2.39	High					
Rear Udder Width	+2.20	Wide					
Udder Cleft	+1.26	Strong					
Udder Depth	+1.77	Shallow					
Front Teat Placement	+1.61	Close					
Rear Teat Placement	+1.76	Close					
Teat Length	-0.21	Short					

DAM: WELCOME TEL RUBICON PIPA



PICKFISH - RED

Sunfish x Supersire x Colt P Red

HBN: HO840003133371256

NASIS: CBPICKFISH

BETA CASEIN: A1/A2

NAAB: 224H004509

Sire: Mr Sunview Coin Sunfish
MG Sire: Seagull-Bay SupersireDam: Buttlerview Pixie Ss57453
MG Dam: Buttlerview Colt Pixie EX90

USDA - CDCB GENOMIC SIRE EVALUATION | AUGUST 2019 | DTRS 0 HERDS 0 | 78% REL

MILK LBS	FAT LBS	FAT %	PROT LBS	PROT %
996	50	0.05	43	0.05

USDA CDCB TYPE SUMMARY 08/2019

PTAT +1.61 78%R UDC+1.47 FLC+0.93 BSC +0.91 0 D / 0 H

Stature	+2.41	Tall	-2	-1	0	1	2
Strength	+1.04	Strong					
Body Depth	+1.06	Deep					
Dairy Form	+1.37	Open Rib					
Rump Angle	+0.64	Sloped					
Thurl Width	+0.98	Wide					
Rear Legs-Side View	-0.54	Posty					
Rear Legs-Rear View	+1.05	Straight					
Foot Angle	+1.56	Steep					
Feet & Legs Score	+1.36	High					
F. Udder Attachment	+2.02	Strong					
Rear Udder Height	+2.41	High					
Rear Udder Width	+2.22	Wide					
Udder Cleft	+0.61	Strong					
Udder Depth	+1.68	Shallow					
Front Teat Placement	+1.43	Close					
Rear Teat Placement	+1.24	Close					
Teat Length	-0.20	Short					

MR BLONDIN PICKFISH RED



CALVING, HEALTH, FERTILITY USDA - CDCB EVALUATION

DAUGHTER PREGNANCY RATE	+0.2	75%
PRODUCTIVE LIFE	+5.7	75%
FERTILITY INDEX	+0.6	
LIVABILITY	+2.1	67%
SOMATIC CELL SCORE	2.70	78%
GESTATION LENGTH	+0	
SIRE CALVING EASE	7.5%	76%
DAUGHTER CALVING EASE	4.5%	67%
NET MERIT \$	1001	

AUSTRALIAN INDICES (08/2019)

BPI	229	65%
HWI	170	58%
TWI	205	64%
OVERALL TYPE	99	55%
MAMMARY	100	55%
DAUGHTER FERTILITY	104	51%
HEAT TOLERANCE	97	38%

CALVING, HEALTH, FERTILITY USDA - CDCB EVALUATION

DAUGHTER PREGNANCY RATE	+0.1	75%
PRODUCTIVE LIFE	+3.8	75%
FERTILITY INDEX	+0.2	
LIVABILITY	+1.1	69%
SOMATIC CELL SCORE	2.77	77%
GESTATION LENGTH	-1	
SIRE CALVING EASE	7.0%	75%
DAUGHTER CALVING EASE	6.2%	68%
NET MERIT \$	534	

AUSTRALIAN INDICES (08/2019)

BPI	199	67%
HWI	170	60%
TWI	201	66%
OVERALL TYPE	102	60%
MAMMARY	104	60%
DAUGHTER FERTILITY	105	57%
HEAT TOLERANCE	97	38%

\$60.00 Sexed ULTRA 4M

\$22.00 Conv

\$65.00 Sexed ULTRA 4M

Mr Blondin



POWERFUL PP RC

Powerball x Supersire x Colt P

80% Black

HBN: H0840003135087150

NASIS: CBPOWERFUL

BETA CASEIN: A2/A2

NAAB: 224H004510

Sire: View Home Powerball P

Dam: Butlerview Pixie Ss57453

MG Sire: Seagull Bay Supersire

MG Dam: Butlerview Colt Pixie EX90

USDA - CDCB GENOMIC SIRE EVALUATION | AUGUST 2019 | DTRS 0 HERDS 0 | 78% REL

MILK LBS	FAT LBS	FAT %	PROT LBS	PROT %
1129	49	0.02	51	0.06

USDA CDCB TYPE SUMMARY 08/2019

PTAT +1.48 78%R UDC+1.71 FLC+0.39 BSC +0.31 0 D / 0 H

			-2	-1	0	1	2
Stature	+1.71	Tall					
Strength	+0.17	Strong					
Body Depth	+0.03	Deep					
Dairy Form	+0.81	Open Rib					
Rump Angle	+0.47	Sloped					
Thurl Width	+1.01	Wide					
Rear Legs-Side View	+1.15	Sickle					
Rear Legs-Rear View	+0.21	Straight					
Foot Angle	+0.40	Steep					
Feet & Legs Score	+0.86	High					
F. Udder Attachment	+2.38	Strong					
Rear Udder Height	+2.24	High					
Rear Udder Width	+2.06	Wide					
Udder Cleft	+0.01	Strong					
Udder Depth	+2.59	Shallow					
Front Teat Placement	+0.64	Close					
Rear Teat Placement	+0.45	Close					
Teat Length	+0.18	Long					

MR BLONDIN POWERFUL PP RC



CALVING, HEALTH, FERTILITY USDA - CDCB EVALUATION

DAUGHTER PREGNANCY RATE	+1.4	75%
PRODUCTIVE LIFE	+5.5	75%
FERTILITY INDEX	+1.8	
LIVABILITY	+3.0	69%
SOMATIC CELL SCORE	2.87	77%
GESTATION LENGTH	-1	
SIRE CALVING EASE	6.6%	81%
DAUGHTER CALVING EASE	4.1%	68%
NET MERIT \$	658	

GTPI
2451

AUSTRALIAN INDICES (08/2019)

BPI	265	67%
HWI	254	60%
TWI	249	66%
OVERALL TYPE	101	61%
MAMMARY	102	61%
DAUGHTER FERTILITY	109	56%
HEAT TOLERANCE	97	38%

\$30.00 Conv

\$56.00 SexedULTRA 4M

SexedULTRA 4M

Combining genomic testing and the use of Sexed Ultra 4M semen has been a management decision that allows Jason Rixon to continue his strong focus and breeding goal on fertility.

"We have watched the fertility of the herd for many years now, we have began genomic testing also now to allow us to be even more refined in our breeding and culling decisions.

I have confidence in using Sexed Ultra 4M Semen on milking cows for the last 3 joinings after seeing the conception rates being stable on our heifers. Our most recent pretest at 6 weeks we received 57% conception rate on milking cows from our last synchro program.

Using Sexed Ultra 4M Semen has allowed us to compress our calving pattern into a tight group and not having to deal with bull calves is so nice."

Jason Rixon, Corryong
RJ & JR Rixon

POPEYE

Balisto x Numero Uno x XaCabeo 80% Black
 HBN: HONLD000920962055 NASIS: AIPOPEYE
BETA CASEIN: A2/A2 NAAB: 515H000216

Sire: De-Su 11236 Balisto Dam: Vekis Paige
 MG Sire: Amighetti Numero Uno MG Dam: Vekis Phantastic

USDA - CDCB GENOMIC SIRE EVALUATION | AUG 2019 DTRS 606 HERDS 316 78% REL

MILK LBS	FAT LBS	FAT %	PROT LBS	PROT %
19	55	0.20	33	0.12

USDA CDCB TYPE SUMMARY 08/2019

PTAT +1.71 77%R UDC+1.94 FLC+0.72 BSC +0.58 0 D / 0 H

			-2	-1	0	1	2
Stature	+1.13	Tall					
Strength	+0.62	Strong					
Body Depth	+0.69	Deep					
Dairy Form	+0.84	Open Rib					
Rump Angle	-0.10	High Pins					
Thurl Width	+1.27	Wide					
Rear Legs-Side View	-0.06	Posty					
Rear Legs-Rear View	+0.45	Straight					
Foot Angle	+1.49	Steep					
Feet & Legs Score	+0.92	High					
F. Udder Attachment	+2.68	Strong					
Rear Udder Height	+2.59	High					
Rear Udder Width	+2.38	Wide					
Udder Cleft	+0.29	Strong					
Udder Depth	+2.12	Shallow					
Front Teat Placement	+0.44	Close					
Rear Teat Placement	-0.08	Wide					
Teat Length	+0.30	Long					



BPI
274

TWI
270

HWI
238

DATAGENE GENOMIC SIRE EVALUATION | AUGUST 2019 | DTRS 0 HERDS 0 | 78% REL

MILK Ltrs	FAT Kgs	FAT %	PROT Kgs	PROT %
-191	18	0.37	11	0.30

OVERALL TYPE	104
MAMMARY SYSTEM	104
STATURE	97
BONE QUALITY	110
LOIN STRENGTH	97
ANGULARITY	100
MUZZLE WIDTH	97
BODY DEPTH	95
CHEST WIDTH	96
PIN WIDTH	98
PIN SET	97
FOOT ANGLE	100
REAR SET	99
REAR LEG REAR VIEW	103
UDDER DEPTH	108
FORE ATTACHMENT	103
REAR ATTACH HEIGHT	105
REAR ATTACH WIDTH	96
CENTRE LIGAMENT	105
TEAT PLACE FORE	105
TEAT PLACE REAR	97
UDDER TEXTURE	102
TEAT LENGTH	106

DAM: VEKIS PAIGE



CALVING, HEALTH, FERTILITY USDA - CDCB EVALUATION

DAUGHTER PREGNANCY RATE	+0.9	84%
PRODUCTIVE LIFE	+4.5	82%
FERTILITY INDEX	+1.4	
LIVABILITY	+1.8	71%
SOMATIC CELL SCORE	2.69	90%
GESTATION LENGTH	-1	
SIRE CALVING EASE	6.3%	85%
DAUGHTER CALVING EASE	4.5%	80%
NET MERIT \$	591	

GTPI
2397

CALVING, HEALTH, WORKABILITIES DATAGENE EVALUATION

ASI	127	Daughter Fertility	107
SIRE CALVING EASE	102	Milking Speed	103
SURVIVAL	109	Temperament	101
CELL COUNT	150	Likeability	104
FEED SAVED	46	A2/A2	

Make sure you take a look at the latest video on POPEYE that is on our Facebook page and Website...

\$28.00 Conv

\$65.00 SexedULTRA 4M

Redrock-View Klutch

REDROCK



Jedi x Kingboy x Numero Uno 85% Black
HBN: H0840003138310311 NASIS: STGREDROCK
BETA CASEIN: A2/A2 NAAB: 551H003501

Sire: S-S-I Montross Jedi Dam: Redrock View Kingboy367 VG86
MG Sire: Morningview Mcc Kingboy MG Dam: Khw Uno Alaska VG85

USDA - CDCB GENOMIC SIRE EVALUATION | AUGUST 2019 | DTRS 0 HERDS 0 | 78% REL

MILK LBS	FAT LBS	FAT %	PROT LBS	PROT %
1444	48	-0.02	56	0.04

USDA CDCB TYPE SUMMARY 08/2019

PTAT +2.37 80%R UDC+2.79 FLC+0.39 BSC +0.71 0 D / 0 H

			-2	-1	0	1	2
Stature	+1.17	Tall					
Strength	+0.95	Strong					
Body Depth	+0.67	Deep					
Dairy Form	+1.07	Open Rib					
Rump Angle	-0.96	High Pins					
Thurl Width	+1.19	Wide					
Rear Legs-Side View	-1.54	Posty					
Rear Legs-Rear View	+0.08	Straight					
Foot Angle	+1.74	Steep					
Feet & Legs Score	+0.57	High					
F. Udder Attachment	+3.23	Strong					
Rear Udder Height	+3.99	High					
Rear Udder Width	+3.67	Wide					
Udder Cleft	+1.27	Strong					
Udder Depth	+2.15	Shallow					
Front Teat Placement	+0.78	Close					
Rear Teat Placement	+0.40	Close					
Teat Length	+0.86	Long					

MGGS: KAMPS HOLLOW ALTITUDE



Ocd



KINGS RESERVE

Modesty x Kingboy x Numero Uno 75% Black
HBN: H08400003137916770 NASIS: STGRESERVE
BETA CASEIN: A2/A2 NAAB: 522H005045

Sire: Bacons-Hill Pety Modesty Dam: Ocd Kingboy Rae 3172
MG Sire: Morningview Mcc Kingboy MG Dam: Edg Ruby Uno Rae EX90

USDA - CDCB GENOMIC SIRE EVALUATION | AUGUST 2019 | DTRS 0 HERDS 0 | 78% REL

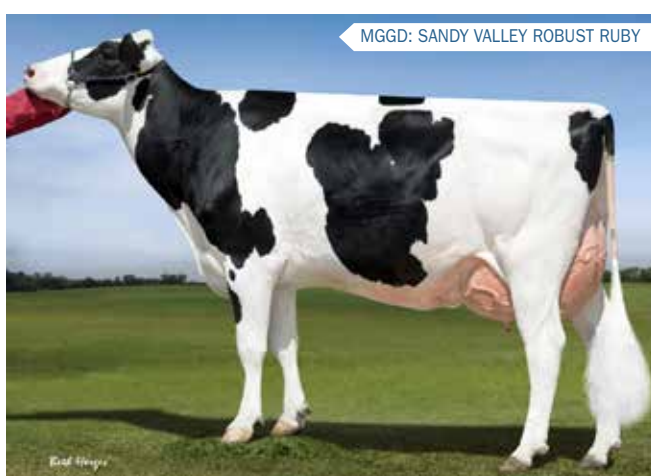
MILK LBS	FAT LBS	FAT %	PROT LBS	PROT %
442	73	0.21	42	0.10

USDA CDCB TYPE SUMMARY 08/2019

PTAT +1.78 80%R UDC+2.03 FLC+1.10 BSC -0.07 0 D / 0 H

			-2	-1	0	1	2
Stature	+0.66	Tall					
Strength	+0.14	Strong					
Body Depth	+0.01	Deep					
Dairy Form	+0.86	Open Rib					
Rump Angle	-0.08	High Pins					
Thurl Width	+0.49	Wide					
Rear Legs-Side View	+0.57	Sickle					
Rear Legs-Rear View	+0.82	Straight					
Foot Angle	+0.96	Steep					
Feet & Legs Score	+1.24	High					
F. Udder Attachment	+2.39	Strong					
Rear Udder Height	+2.73	High					
Rear Udder Width	+2.51	Wide					
Udder Cleft	+0.48	Strong					
Udder Depth	+1.87	Shallow					
Front Teat Placement	+0.63	Close					
Rear Teat Placement	+0.32	Close					
Teat Length	+0.61	Long					

MGGS: SANDY VALLEY ROBUST RUBY



CALVING, HEALTH, FERTILITY USDA - CDCB EVALUATION

DAUGHTER PREGNANCY RATE	+3.5	76%
PRODUCTIVE LIFE	+7.2	76%
FERTILITY INDEX	+3.3	
LIVABILITY	+1.6	69%
SOMATIC CELL SCORE	2.65	78%
GESTATION LENGTH	-2	
SIRE CALVING EASE	7.3%	84%
DAUGHTER CALVING EASE	3.3%	67%
NET MERIT \$	752	

GTPI
2672

AUSTRALIAN INDICES (08/2019)

BPI	258	68%
HWI	244	61%
TWI	253	67%
OVERALL TYPE	103	62%
MAMMARY	107	62%
DAUGHTER FERTILITY	113	67%
HEAT TOLERANCE	103	38%

\$28.00 Conv

\$60.00 SexedULTRA 4M

CALVING, HEALTH, FERTILITY USDA - CDCB EVALUATION

DAUGHTER PREGNANCY RATE	+0.1	76%
PRODUCTIVE LIFE	+5.1	76%
FERTILITY INDEX	+0.3	
LIVABILITY	+2.9	69%
SOMATIC CELL SCORE	2.89	79%
GESTATION LENGTH	-2	
SIRE CALVING EASE	6.3%	69%
DAUGHTER CALVING EASE	3.1%	67%
NET MERIT \$	721	

GTPI
2492

AUSTRALIAN INDICES (08/2019)

BPI	197	67%
HWI	179	60%
TWI	179	66%
OVERALL TYPE	99	60%
MAMMARY	103	60%
DAUGHTER FERTILITY	104	57%
HEAT TOLERANCE	100	38%



EcoFeed 102

\$20.00 Conv



CHROMOSOMALTM **MATING**

Creating the most profitable herd...

OUR LATEST INNOVATIVE HERD MANAGEMENT SOLUTION

This advanced mating program will help you create the most profitable herd. Chromosomal Mating integrates innovative science with pioneering research and sophisticated computing capabilities to optimize herd profitability through genetics.

ST  **genetics**



REVIVAL RED

Atwork x Aikman x Larson

HBN: HOCAN000012111876

NASIS: STGREVIVAL

BETA CASEIN: A1/A2

NAAB: 551H003432

Sire: Willsbro Atwork Dam: OConnors Aikman Scarlett VG87
 MG Sire: Gen-I-Beq Aikman RC MG Dam: Dynemtholm Sunview Sienna VG86

USDA - CDCB GENOMIC SIRE EVALUATION | AUGUST 2019 | DTRS 0 HERDS 0 | 78% REL

MILK LBS	FAT LBS	FAT %	PROT LBS	PROT %
150	78	0.27	23	0.04

USDA CDCB TYPE SUMMARY 08/2019

PTAT +1.11 78%R UDC+1.57 FLC+0.98 BSC +0.26 0 D / 0 H

			-2	-1	0	1	2
Stature	+0.30	Tall					
Strength	+0.77	Strong					
Body Depth	+0.35	Deep					
Dairy Form	+0.70	Open Rib					
Rump Angle	-1.27	High Pins					
Thurl Width	-0.37	Narrow					
Rear Legs-Side View	+0.70	Sickle					
Rear Legs-Rear View	+0.80	Straight					
Foot Angle	+0.07	Steep					
Feet & Legs Score	+1.10	High					
F. Udder Attachment	+1.66	Strong					
Rear Udder Height	+1.90	High					
Rear Udder Width	+1.75	Wide					
Udder Cleft	+1.14	Strong					
Udder Depth	+1.21	Shallow					
Front Teat Placement	+1.19	Close					
Rear Teat Placement	+0.81	Close					
Teat Length	-0.35	Short					

DAM: OCONNORS AIKMAN SCARLETT



Patty Jones

CALVING, HEALTH, FERTILITY USDA - CDCB EVALUATION

DAUGHTER PREGNANCY RATE	+1.4	74%
PRODUCTIVE LIFE	+5.2	74%
FERTILITY INDEX	+1.1	
LIVABILITY	+3.2	67%
SOMATIC CELL SCORE	2.68	77%
GESTATION LENGTH	-1	
SIRE CALVING EASE	5.5%	87%
DAUGHTER CALVING EASE	3.5%	67%
NET MERIT \$	695	

GTPI
2415

AUSTRALIAN INDICES (08/2019)

BPI	255	66%
HWI	227	59%
TWI	220	65%
OVERALL TYPE	99	56%
MAMMARY	102	56%
DAUGHTER FERTILITY	112	52%
HEAT TOLERANCE	106	38%



EcoFeed 100

\$24.00 Conv

\$50.00 SexedULTRA4M™

ROCCO



Delta-Worth x Rubicon x Numero Uno

HBN: H0840003142704258

NASIS: STGROCCO

BETA CASEIN: A2/A2

NAAB: 551H003638

Sire: Butz-Hill Delta Worth Dam: Farnear Reagan Rub 54934 VG85
 MG Sire: Edg Rubicon MG Dam: Farnear Ready Reagan VG86

USDA - CDCB GENOMIC SIRE EVALUATION | AUGUST 2019 | DTRS 0 HERDS 0 | 78% REL

MILK LBS	FAT LBS	FAT %	PROT LBS	PROT %
1374	97	0.16	51	0.03

USDA CDCB TYPE SUMMARY 08/2019

PTAT +2.14 76%R UDC+2.25 FLC+1.66 BSC -0.34 0 D / 0 H

			-2	-1	0	1	2
Stature	+1.05	Tall					
Strength	+0.02	Strong					
Body Depth	+0.09	Deep					
Dairy Form	+1.54	Open Rib					
Rump Angle	+0.53	Sloped					
Thurl Width	+0.70	Wide					
Rear Legs-Side View	-0.33	Posty					
Rear Legs-Rear View	+1.60	Straight					
Foot Angle	+1.08	Steep					
Feet & Legs Score	+1.83	High					
F. Udder Attachment	+2.29	Strong					
Rear Udder Height	+3.05	High					
Rear Udder Width	+2.81	Wide					
Udder Cleft	+2.49	Strong					
Udder Depth	+1.61	Shallow					
Front Teat Placement	+2.54	Close					
Rear Teat Placement	+3.00	Close					
Teat Length	-1.48	Short					

DAM: FARNEAR REAGAN RUB 54934



Dale Hanger

CALVING, HEALTH, FERTILITY USDA - CDCB EVALUATION

DAUGHTER PREGNANCY RATE	+0.3	72%
PRODUCTIVE LIFE	+7.8	73%
FERTILITY INDEX	+0.6	
LIVABILITY	+4.7	67%
SOMATIC CELL SCORE	2.65	75%
GESTATION LENGTH	+1	
SIRE CALVING EASE	6.2%	61%
DAUGHTER CALVING EASE	2.8%	56%
NET MERIT \$	967	

GTPI
2770

AUSTRALIAN INDICES (08/2019)

BPI	293	64%
HWI	257	57%
TWI	278	63%
OVERALL TYPE	100	53%
MAMMARY	105	53%
DAUGHTER FERTILITY	109	49%
HEAT TOLERANCE	101	38%



EcoFeed 101

\$32.00 Conv

\$70.00 SexedULTRA4M™

St Gen Frazzled

Sexed**ULTRA**4M™

ROUX



Frazzled x Dearing x Balisto

20% Black

HBN: H08400031466166986

NASIS: STGROUX

BETA CASEIN: A2/A2

NAAB: 551H003842

Sire: Melarry JoSuper Frazzled

Dam: St Gen 74031

MG Sire: Mr Day Dearing 1445

MG Dam: Ms Dds Hope Balisto 18192

USDA - CDCB GENOMIC SIRE EVALUATION | AUGUST 2019 | DTRS 0 HERDS 0 | 78% REL

MILK LBS	FAT LBS	FAT %	PROT LBS	PROT %
1985	98	0.08	70	0.03

USDA CDCB TYPE SUMMARY 08/2019

PTAT +1.33 77%R UDC+1.92 FLC+0.69 BSC -1.24 0 D / 0 H

			-2	-1	0	1	2
Stature	+0.08	Tall					
Strength	-0.84	Frail					
Body Depth	-0.58	Shallow					
Dairy Form	+1.30	Open Rib					
Rump Angle	+0.23	Sloped					
Thurl Width	+0.01	Wide					
Rear Legs-Side View	+1.15	Sickle					
Rear Legs-Rear View	+0.04	Straight					
Foot Angle	+0.29	Steep					
Feet & Legs Score	+0.85	High					
F. Udder Attachment	+1.28	Strong					
Rear Udder Height	+2.89	High					
Rear Udder Width	+2.66	Wide					
Udder Cleft	+1.31	Strong					
Udder Depth	+0.83	Shallow					
Front Teat Placement	+0.70	Close					
Rear Teat Placement	+0.88	Close					
Teat Length	-0.42	Short					



MGD: VIEW HOME UNO HOPE

CALVING, HEALTH, FERTILITY USDA - CDCB EVALUATION

DAUGHTER PREGNANCY RATE	+0.6	73%
PRODUCTIVE LIFE	+8.1	74%
FERTILITY INDEX	+1.7	
LIVABILITY	+4.4	67%
SOMATIC CELL SCORE	2.70	77%
GESTATION LENGTH	-2	
SIRE CALVING EASE	7.5%	62%
DAUGHTER CALVING EASE	3.6%	60%
NET MERIT \$	1043	

GTPI
2835

St Gen

Sexed**ULTRA**4M™

RUBI-FIRE

Rubicon x Supersire x Goldwyn

50% Black

HBN: H0840003010365179

NASIS: STGRUBIFIRE

BETA CASEIN: A2/A2

NAAB: 551H003253

Sire: Edg Rubicon

Dam: Ocd Ss Soleil Moon Frye VG85

MG Sire: Seagull Bay Supersire

MG Dam: Lars Acres Felices Fame EX91

USDA - CDCB GENOMIC SIRE EVALUATION | AUGUST 2019 | DTRS 0 HERDS 0 | 78% REL

MILK LBS	FAT LBS	FAT %	PROT LBS	PROT %
856	86	0.19	42	0.06

USDA CDCB TYPE SUMMARY 08/2019

PTAT +1.86 79%R UDC+2.06 FLC+1.52 BSC +0.24 0 D / 0 H

			-2	-1	0	1	2
Stature	+0.82	Tall					
Strength	+0.49	Strong					
Body Depth	+0.32	Deep					
Dairy Form	+0.95	Open Rib					
Rump Angle	+0.36	Sloped					
Thurl Width	+0.69	Wide					
Rear Legs-Side View	+0.07	Sickle					
Rear Legs-Rear View	+1.92	Straight					
Foot Angle	+1.04	Steep					
Feet & Legs Score	+1.49	High					
F. Udder Attachment	+2.39	Strong					
Rear Udder Height	+2.59	High					
Rear Udder Width	+2.38	Wide					
Udder Cleft	+1.03	Strong					
Udder Depth	+1.76	Shallow					
Front Teat Placement	+1.44	Close					
Rear Teat Placement	+1.34	Close					
Teat Length	+0.02	Long					



DAM: OCD SS SOLEIL MOON FRYE

Frank Robinson

CALVING, HEALTH, FERTILITY USDA - CDCB EVALUATION

DAUGHTER PREGNANCY RATE	+0.1	76%
PRODUCTIVE LIFE	5.0	79%
FERTILITY INDEX	+0.1	
LIVABILITY	+2.7	73%
SOMATIC CELL SCORE	2.75	79%
GESTATION LENGTH	+1	
SIRE CALVING EASE	7.1%	93%
DAUGHTER CALVING EASE	4.6%	67%
NET MERIT \$	763	

GTPI
2551\$150.00 Sexed**ULTRA**4M™

\$20.00 Conv

\$48.00 Sexed**ULTRA**4M™

RUBI-HAZE 54682

Rubicon x Numero Uno x Robust 15% Black
 HBN: H0840003010353429 NASIS: RUBI-HAZE
BETA CASEIN: A2/A2 NAAB: 151H003206

Sire: Edg Rubicon Dam: View Home Uno Hope EX92
 MG Sire: Amighetti Numero Uno MG Dam: Plne-Tree 2149 Robst 4846 VG86

USDA - CDCB GENOMIC SIRE EVALUATION | AUGUST 2019 DTRS 25 HERDS 5 | 78% REL

MILK LBS	FAT LBS	FAT %	PROT LBS	PROT %
743	84	0.20	42	0.07

USDA CDCB TYPE SUMMARY 08/2019

PTAT +2.00 80%R UDC+1.64 FLC+1.42 BSC +0.58 0 D / 0 H

			-2	-1	0	1	2
Stature	+1.40	Tall					
Strength	+0.78	Strong					
Body Depth	+0.81	Deep					
Dairy Form	+1.00	Open Rib					
Rump Angle	+0.17	Sloped					
Thurl Width	+0.57	Wide					
Rear Legs-Side View	-0.58	Posty					
Rear Legs-Rear View	+1.53	Straight					
Foot Angle	+1.19	Steep					
Feet & Legs Score	+1.62	High					
F. Udder Attachment	+2.11	Strong					
Rear Udder Height	+2.29	High					
Rear Udder Width	+2.11	Wide					
Udder Cleft	+1.48	Strong					
Udder Depth	+1.49	Shallow					
Front Teat Placement	+1.10	Close					
Rear Teat Placement	+1.29	Close					
Teat Length	+0.94	Long					



DAM: VIEW HOME UNO HOPE EX92

CALVING, HEALTH, FERTILITY USDA - CDCB EVALUATION

DAUGHTER PREGNANCY RATE	+0.9	77%
PRODUCTIVE LIFE	+6.3	79%
FERTILITY INDEX	+0.8	
LIVABILITY	+3.3	74%
SOMATIC CELL SCORE	2.69	83%
GESTATION LENGTH	-1	
SIRE CALVING EASE	7.8%	86%
DAUGHTER CALVING EASE	3.5%	73%
NET MERIT \$	791	

GTPI
2593

AUSTRALIAN INDICES (08/2019)

BPI	258	65%
HWI	248	58%
TWI	249	63%
OVERALL TYPE	101	54%
MAMMARY	103	54%
DAUGHTER FERTILITY	108	59%
HEAT TOLERANCE	98	38%

\$22.00 Conv

\$48.00 Sexed **ULTRA 4M**

STOCKTON

Noble x Rubicon x Shan
 HBN: H0840003132353723 NASIS: STGSTOCKTON
BETA CASEIN: A1/A1 NAAB: 551H003793

Sire: Mr Spring Noble Dam: San Dan Skittles Rub 62625
 MG Sire: Edg Rubicon MG Dam: San Dan Shan Skittles VG85

USDA - CDCB GENOMIC SIRE EVALUATION | AUGUST 2019 | DTRS 0 HERDS 0 | 78% REL

MILK LBS	FAT LBS	FAT %	PROT LBS	PROT %
1611	100	0.14	57	0.03

USDA CDCB TYPE SUMMARY 08/2019

PTAT +2.26 76%R UDC+2.42 FLC+0.79 BSC +0.55 0 D / 0 H

			-2	-1	0	1	2
Stature	+1.66	Tall					
Strength	+0.87	Strong					
Body Depth	+0.87	Deep					
Dairy Form	+1.73	Open Rib					
Rump Angle	-0.03	High Pins					
Thurl Width	+1.65	Wide					
Rear Legs-Side View	+0.35	Sickle					
Rear Legs-Rear View	+0.79	Straight					
Foot Angle	+1.02	Steep					
Feet & Legs Score	+1.12	High					
F. Udder Attachment	+2.66	Strong					
Rear Udder Height	+3.43	High					
Rear Udder Width	+3.16	Wide					
Udder Cleft	+1.52	Strong					
Udder Depth	+2.21	Shallow					
Front Teat Placement	+1.73	Close					
Rear Teat Placement	+1.53	Close					
Teat Length	-0.86	Short					



MGGD: UFM-DUBS SHERUN

CALVING, HEALTH, FERTILITY USDA - CDCB EVALUATION

DAUGHTER PREGNANCY RATE	+0.7	72%
PRODUCTIVE LIFE	+7.5	73%
FERTILITY INDEX	+1.0	
LIVABILITY	+3.4	67%
SOMATIC CELL SCORE	2.62	74%
GESTATION LENGTH	+0	
SIRE CALVING EASE	7.9%	61%
DAUGHTER CALVING EASE	4.4%	56%
NET MERIT \$	943	

GTPI
2780

AUSTRALIAN INDICES (08/2019)

BPI	256	65%
HWI	218	58%
TWI	254	63%
OVERALL TYPE	102	54%
MAMMARY	107	54%
DAUGHTER FERTILITY	109	49%
HEAT TOLERANCE	98	38%



EcoFeed 104

\$45.00 Conv

\$70.00 Sexed **ULTRA 4M**



SUPERSHOT

Supersire x Super x Shottle

80% Black

HBN: HONLD000755898903

NASIS: CBSUPERSHOT

BETA CASEIN: A1/A2

NAAB: 224H002881

Sire: Seagull Bay Supersire
MG Sire: Charlesdale SuperstitionDam: Rose Supershot VG88
MG Dam: RC Classic VG87

USDA - CDCB GENOMIC SIRE EVALUATION | AUGUST 2019 | DTRS 6225 HERDS 1578

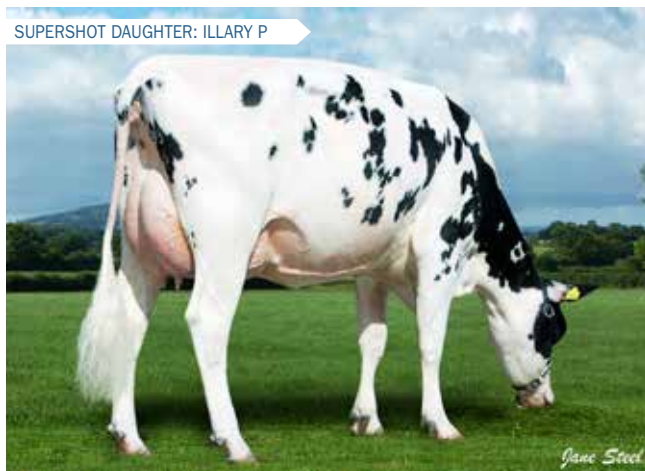
MILK LBS	FAT LBS	FAT %	PROT LBS	PROT %
2116	46	-0.11	67	0.01

USDA CDCB TYPE SUMMARY 08/2019

PTAT +1.00 99%R UDC+1.00 FLC+0.34 BSC +1.19 2970 D / 917 H

			-2	-1	0	1	2
Stature	+0.75	Tall					
Strength	+1.12	Strong					
Body Depth	+0.16	Deep					
Dairy Form	-0.11	Tight					
Rump Angle	+1.06	Sloped					
Thurl Width	+0.87	Wide					
Rear Legs-Side View	+0.85	Sickle					
Rear Legs-Rear View	+0.28	Straight					
Foot Angle	+0.18	Steep					
Feet & Legs Score	+0.52	High					
F. Udder Attachment	+2.02	Strong					
Rear Udder Height	+1.46	High					
Rear Udder Width	+1.34	Wide					
Udder Cleft	+0.20	Strong					
Udder Depth	+0.71	Shallow					
Front Teat Placement	+0.25	Close					
Rear Teat Placement	+0.15	Close					
Teat Length	+0.87	Long					

SUPERSHOT DAUGHTER: ILLARY P



CALVING, HEALTH, FERTILITY USDA - CDCB EVALUATION

DAUGHTER PREGNANCY RATE	+1.3	97%
PRODUCTIVE LIFE	+6.2	96%
FERTILITY INDEX	+0.9	
LIVABILITY	+2.0	84%
SOMATIC CELL SCORE	2.63	99%
GESTATION LENGTH	-4	
SIRE CALVING EASE	6.6%	99%
DAUGHTER CALVING EASE	3.0%	99%
NET MERIT \$	675	

GTPI
2463

AUSTRALIAN INDICES (08/2019)

BPI	305	87%
HWI	272	80%
TWI	300	87%
OVERALL TYPE	105	89%
MAMMARY	102	89%
DAUGHTER FERTILITY	109	88%
HEAT TOLERANCE	101	38%

\$30.00 Conv



SUPERSTYLE

Supersire x Super x Shottle

75% Black

HBN: HONLD000755898972

NASIS: CBSUPERSTYLE

BETA CASEIN: A1/A2

NAAB: 224H002982

Sire: Seagull-Bay Supersire
MG Sire: Charlesdale SupersonicDam: Rose Supershot VG88
MG Dam: RC Classic VG87

USDA - CDCB GENOMIC SIRE EVALUATION AUGUST 2019 DTRS 2908 HERDS 678 78%

MILK LBS	FAT LBS	FAT %	PROT LBS	PROT %
1876	51	-0.07	59	0.01

USDA CDCB TYPE SUMMARY 08/2019

PTAT +1.41 91%R UDC+0.58 FLC+0.64 BSC +0.58 976 D / 268 H

			-2	-1	0	1	2
Stature	+1.93	Tall					
Strength	+0.65	Strong					
Body Depth	+0.75	Deep					
Dairy Form	+1.44	Open Rib					
Rump Angle	+0.64	Sloped					
Thurl Width	+1.65	Wide					
Rear Legs-Side View	+1.29	Sickle					
Rear Legs-Rear View	+0.46	Straight					
Foot Angle	+0.62	Steep					
Feet & Legs Score	+1.15	High					
F. Udder Attachment	+0.62	Strong					
Rear Udder Height	+1.87	High					
Rear Udder Width	+1.72	Wide					
Udder Cleft	-0.48	Weak					
Udder Depth	+1.05	Shallow					
Front Teat Placement	-0.21	Wide					
Rear Teat Placement	-0.72	Wide					
Teat Length	+1.30	Long					

PORTWAY SUPERSTYLE WILLOW



CALVING, HEALTH, FERTILITY USDA - CDCB EVALUATION

DAUGHTER PREGNANCY RATE	-0.6	88%
PRODUCTIVE LIFE	+4.5	87%
FERTILITY INDEX	-0.7	
LIVABILITY	+0.4	78%
SOMATIC CELL SCORE	2.95	92%
GESTATION LENGTH	-3	
SIRE CALVING EASE	6.7%	81%
DAUGHTER CALVING EASE	4.9%	80%
NET MERIT \$	547	

GTPI
2274

AUSTRALIAN INDICES (08/2019)

BPI	186	84%
HWI	155	75%
TWI	178	81%
OVERALL TYPE	105	77%
MAMMARY	99	77%
DAUGHTER FERTILITY	104	85%
HEAT TOLERANCE	103	38%

\$18.00 Conv

SUSTAINABLE PROFITS



eco[♀]feed™



In the last 5 years, **STgenetics** has invested extensively in testing several thousands of daughters from elite bulls for feed conversion



From all data and information collected, the first DIRECT index for feed conversion was created: it's called "EcoFeed"



The bulls with a favorable index are designated **EcoFeed**



One of the most important discoveries: **EcoFeed** has heritability of 21%, which is about the same as production and type traits. That means that genetic progress can be achieved



EcoFeed animals use fewer feed resources and convert feed more efficiently, creating less waste, less manure, less carbon footprint: EcoFeed is the only Direct index measuring feed conversion which will permit genetic gains for the next generation.



eco[♀]feed™

DESIGNATED SIRES

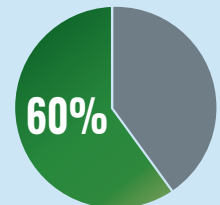
Build your herd with animals that produce more on less feed by selecting ecofeed ratings.

The next revolution in Dairy Cattle Breeding

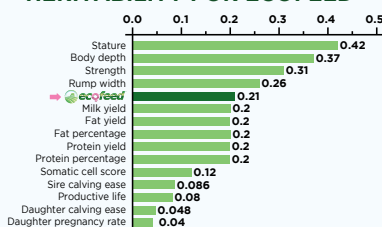


In the current ST Genetics Australia sire line up there are over 30 sires that have Ecofeed ratings.

FEED COSTS CAN REPRESENT UP TO 60% OF TOTAL COSTS ON A DAIRY FARM.



HERITABILITY FOR ECOFEED™



Source CDCB & HAUSA (04/18)
Source for EcoFeed™ Sexing Technologies



PROFITABILITY AND SUSTAINABILITY IN ONE eco[♀]feed RANKING

Ecofeed rankings are based on 100 base system. Every 10 points are equivalent to 1.0 standard deviation. Every 5 points are equivalent to 1.0 lb less feed consumed per animal per day.





SUPREME

Cashflow x Platinum x Sudan

85% Black

HBN: H0840003133064316

NASIS: CBCOSUPREME

BETA CASEIN: A2/A2

NAAB: 224H004512

Sire: View-Home Cashflow Dam: Vieuxsaule Platinum Shiras
 MG Sire: Seagull Bay Platinum MG Dam: Vieuxsaule Sudan Kareen VG88

USDA - CDCB GENOMIC SIRE EVALUATION | AUGUST 2019 | DTRS 0 HERDS 0 | 78% REL

MILK LBS	FAT LBS	FAT %	PROT LBS	PROT %
1107	77	0.13	56	0.08

USDA CDCB TYPE SUMMARY 08/2019

PTAT +1.59 78%R UDC+1.71 FLC+0.69 BSC +0.20 0 D / 0 H

Stature	+1.47	Tall			
Strength	+0.56	Strong			
Body Depth	+0.77	Deep			
Dairy Form	+1.56	Open Rib			
Rump Angle	+0.75	Sloped			
Thurl Width	+0.74	Wide			
Rear Legs-Side View	-1.02	Posty			
Rear Legs-Rear View	+0.57	Straight			
Foot Angle	+1.00	Steep			
Feet & Legs Score	+1.00	High			
F. Udder Attachment	+1.80	Strong			
Rear Udder Height	+2.61	High			
Rear Udder Width	+2.40	Wide			
Udder Cleft	+1.54	Strong			
Udder Depth	+1.27	Shallow			
Front Teat Placement	+1.57	Close			
Rear Teat Placement	+1.53	Close			
Teat Length	-0.54	Short			

MGDD: VIEUXSAULE BOLTON HALIA



TACOMA

NEW

Noble x Jedi x Main Event

75% Black

HBN: H0840003146616195

NASIS: STGTACOMA

BETA CASEIN: A1/A2

NAAB: 551H003801

Sire: Mr Spring Noble Dam: Siemers Jedi Tish
 MG Sire: S-S-I Montana Jedi MG Dam: IHG Main E Tisha 9126 85

USDA - CDCB GENOMIC SIRE EVALUATION | AUGUST 2019 | DTRS 0 HERDS 0 | 78% REL

MILK LBS	FAT LBS	FAT %	PROT LBS	PROT %
1329	71	0.08	60	0.07

USDA CDCB TYPE SUMMARY 08/2019

PTAT +1.45 75%R UDC+2.47 FLC+0.12 BSC -0.23 0 D / 0 H

Stature	+0.80	Tall			
Strength	-0.26	Frail			
Body Depth	-0.75	Shallow			
Dairy Form	+0.51	Open Rib			
Rump Angle	+0.04	Sloped			
Thurl Width	+0.40	Wide			
Rear Legs-Side View	-1.50	Posty			
Rear Legs-Rear View	+0.11	Straight			
Foot Angle	+1.10	Steep			
Feet & Legs Score	+0.19	High			
F. Udder Attachment	+2.43	Strong			
Rear Udder Height	+2.98	High			
Rear Udder Width	+2.74	Wide			
Udder Cleft	+1.86	Strong			
Udder Depth	+2.72	Shallow			
Front Teat Placement	+1.14	Close			
Rear Teat Placement	+1.19	Close			
Teat Length	-1.08	Short			

ST GEN NOBLE TACOMA



CALVING, HEALTH, FERTILITY USDA - CDCB EVALUATION

DAUGHTER PREGNANCY RATE	-1.3	74%
PRODUCTIVE LIFE	+5.4	75%
FERTILITY INDEX	-1.2	
LIVABILITY	+3.9	68%
SOMATIC CELL SCORE	2.63	77%
GESTATION LENGTH	+0	
SIRE CALVING EASE	7.5%	78%
DAUGHTER CALVING EASE	6.1%	67%
NET MERIT \$	749	

GTPI
2497

AUSTRALIAN INDICES (08/2019)

BPI	248	64%
HWI	218	56%
TWI	243	62%
OVERALL TYPE	99	57%
MAMMARY	106	57%
DAUGHTER FERTILITY	104	52%
HEAT TOLERANCE	94	38%

\$16.00 Conv

CALVING, HEALTH, FERTILITY USDA - CDCB EVALUATION

DAUGHTER PREGNANCY RATE	+3.1	72%
PRODUCTIVE LIFE	+8.3	73%
FERTILITY INDEX	+3.4	
LIVABILITY	+2.6	67%
SOMATIC CELL SCORE	2.48	74%
GESTATION LENGTH	-2	
SIRE CALVING EASE	7.8%	61%
DAUGHTER CALVING EASE	3.1%	56%
NET MERIT \$	917	

GTPI
2787

\$65.00 SexedULTRA4M

Delicious H-Noon

TAMPA

High Noon x Jedi x Robust

HBN: H0840003132350683

NASIS: STGTAMPA

BETA CASEIN: A2/A2

NAAB: 551H003797

Sire: Mr Detour High Noon
MG Sire: S-S-I Montross Jedi

Dam: Ms Delicious Jedi 35127
MG Dam: Miss Ocd Robst Delicious VG87

USDA - CDCB GENOMIC SIRE EVALUATION | AUGUST 2019 | DTRS 0 HERDS 0 | 78% REL

MILK LBS	FAT LBS	FAT %	PROT LBS	PROT %
2229	79	-0.01	77	0.03

USDA CDCB TYPE SUMMARY 08/2019

PTAT +1.62 74%R UDC+1.88 FLC+1.03 BSC -1.10 0 D / 0 H

			-2	-1	0	1	2
Stature	+0.30	Tall					
Strength	-0.58	Frail					
Body Depth	-0.53	Shallow					
Dairy Form	+1.64	Open Rib					
Rump Angle	-1.10	High Pins					
Thurl Width	+0.38	Wide					
Rear Legs-Side View	+0.47	Sickle					
Rear Legs-Rear View	+0.76	Straight					
Foot Angle	+0.65	Steep					
Feet & Legs Score	+1.10	High					
F. Udder Attachment	+1.60	Strong					
Rear Udder Height	+2.78	High					
Rear Udder Width	+2.56	Wide					
Udder Cleft	+1.04	Strong					
Udder Depth	+1.30	Shallow					
Front Teat Placement	+0.79	Close					
Rear Teat Placement	+0.66	Close					
Teat Length	-1.46	Short					

DAM: MISS ODC ROBST DELICIOUS



CALVING, HEALTH, FERTILITY USDA - CDCB EVALUATION

DAUGHTER PREGNANCY RATE	+2.3	73%
PRODUCTIVE LIFE	+9.1	73%
FERTILITY INDEX	+2.7	
LIVABILITY	+4.4	67%
SOMATIC CELL SCORE	2.65	75%
GESTATION LENGTH	+0	
SIRE CALVING EASE	6.5%	59%
DAUGHTER CALVING EASE	3.6%	56%
NET MERIT \$	1017	

GTPI
2868

AUSTRALIAN INDICES (08/2019)

BPI	182	64%
HWI	148	56%
TWI	153	62%
OVERALL TYPE	98	51%
MAMMARY	104	51%
DAUGHTER FERTILITY	104	47%
HEAT TOLERANCE	102	38%

\$120.00 SexedULTRA4M™

T-Gen-Ac Noble

TAMPICO

Noble x Silver x Cashcoin

HBN: H0840003132352676

NASIS: STGTAMPICO

BETA CASEIN: A1/A2

NAAB: 551H003790

Sire: Mr Spring Noble
MG Sire: Seagull Bay Silver

Dam: T-Gen-Ac Confetti Sacha
MG Dam: Ms America Confetti

USDA - CDCB GENOMIC SIRE EVALUATION | AUGUST 2019 | DTRS 0 HERDS 0 | 78% REL

MILK LBS	FAT LBS	FAT %	PROT LBS	PROT %
1338	87	0.13	55	0.05

USDA CDCB TYPE SUMMARY 08/2019

PTAT +2.46 75%R UDC+2.99 FLC+0.87 BSC +0.23 0 D / 0 H

			-2	-1	0	1	2
Stature	+1.55	Tall					
Strength	+0.61	Strong					
Body Depth	+0.66	Deep					
Dairy Form	+1.75	Open Rib					
Rump Angle	+0.51	Sloped					
Thurl Width	+1.20	Wide					
Rear Legs-Side View	-0.18	Posty					
Rear Legs-Rear View	+1.01	Straight					
Foot Angle	+1.33	Steep					
Feet & Legs Score	+1.08	High					
F. Udder Attachment	+2.89	Strong					
Rear Udder Height	+4.45	High					
Rear Udder Width	+4.09	Wide					
Udder Cleft	+2.30	Strong					
Udder Depth	+1.98	Shallow					
Front Teat Placement	+1.97	Close					
Rear Teat Placement	+2.43	Close					
Teat Length	-0.90	Short					

GDAM: MS AMERICA CONFETTI



CALVING, HEALTH, FERTILITY USDA - CDCB EVALUATION

DAUGHTER PREGNANCY RATE	+1.3	73%
PRODUCTIVE LIFE	+6.5	73%
FERTILITY INDEX	+1.6	
LIVABILITY	+3.5	68%
SOMATIC CELL SCORE	2.76	74%
GESTATION LENGTH	-1	
SIRE CALVING EASE	9.3%	61%
DAUGHTER CALVING EASE	4.5%	56%
NET MERIT \$	889	

GTPI
2762

AUSTRALIAN INDICES (08/2019)

BPI	273	65%
HWI	209	58%
TWI	264	64%
OVERALL TYPE	101	56%
MAMMARY	109	56%
DAUGHTER FERTILITY	106	50%
HEAT TOLERANCE	94	38%

\$60.00 SexedULTRA4M™

Cogent

TWIST

Shottle x Major x Winchester
HBN: H0GBR00000631308
BETA CASEIN: A2/A2

20% Black
NASIS: COGENTTWIST
NAAB: 522H003729

Sire: Picston Shottle
MG Sire: Looking Major

Dam: Cogent Major Tex VG88
MG Dam: Cogent Winchester Tex VG86

DATA GENE GENOMIC SIRE EVALUATION AUGUST 2019 DTRS 796 HERDS 126 78%REL

MILK LTRS	FAT KGS	FAT %	PROT KGS	PROT %
190	35	0.39	15	0.18

AUSTRALIAN INDICIES 08/2019 164 D / 39 H

OVERALL TYPE	102	MAMMARY SYSTEM	96
STATURE	105	UDDER DEPTH	98
BONE QUALITY	97	FORE ATTACHMENT	95
LOIN STRENGTH	104	REAR ATTACH HEIGHT	99
ANGULARITY	100	REAR ATTACH WIDTH	100
MUZZLE WIDTH	99	CENTRE LIGAMENT	96
BODY DEPTH	100	TEAT PLACE FORE	98
CHEST WIDTH	101	TEAT PLACE REAR	93
PIN SET	112	UDDER TEXTURE	99
FOOT ANGLE	101	TEAT LENGTH	106
REAR SET	97		
REAR SET REAR VIEW	102		

TWIST DAUGHTER GROUP



AUSTRALIAN INDICES (08/2019)

BPI	243	91%
HWI	176	84%
TWI	210	91%
OVERALL TYPE	102	94%
MAMMARY	96	94%
DAUGHTER FERTILITY	105	95%
HEAT TOLERANCE	98	38%
CALVING EASE	101	98%

BPI
243

\$22.00 Conv



Mr Farnear Helix



TWITCH

NEW

Helix x Delta x Numero Uno
HBN: H0840003132353302
BETA CASEIN: A1/A1

65% Black
NASIS: STGTWITCH
NAAB: 551H003714

Sire: Aot Silver Helix
MG Sire: Mr Mogul Delta 1427

Dam: Ms Farnear Trudy Thyme VG86
MG Dam: Edg Trac Uno Trudy VG85

USDA - CDCB GENOMIC SIRE EVALUATION | AUGUST 2019 | DTRS 0 HERDS 0 | 78% REL

MILK LBS	FAT LBS	FAT %	PROT LBS	PROT %
1508	114	0.20	59	0.05

USDA CDCB TYPE SUMMARY 08/2019

PTAT +2.28 79%R UDC+2.53 FLC+1.48 BSC -0.02 0 D / 0 H

			-2	-1	0	1	2
Stature	+1.29	Tall					
Strength	+0.35	Strong					
Body Depth	+0.60	Deep					
Dairy Form	+1.44	Open Rib					
Rump Angle	-0.64	High Pins					
Thurl Width	+0.37	Wide					
Rear Legs-Side View	-0.58	Posty					
Rear Legs-Rear View	+1.24	Straight					
Foot Angle	+2.02	Steep					
Feet & Legs Score	+1.65	High					
F. Udder Attachment	+2.46	Strong					
Rear Udder Height	+3.80	High					
Rear Udder Width	+3.50	Wide					
Udder Cleft	+1.25	Strong					
Udder Depth	+1.69	Shallow					
Front Teat Placement	+1.67	Close					
Rear Teat Placement	+1.69	Close					
Teat Length	-0.21	Short					

DAM: MS FARNEAR TRUDY THYME



CALVING, HEALTH, FERTILITY USDA - CDCB EVALUATION

DAUGHTER PREGNANCY RATE	+0.9	75%
PRODUCTIVE LIFE	+6.0	75%
FERTILITY INDEX	+1.2	
LIVABILITY	+1.9	68%
SOMATIC CELL SCORE	2.76	77%
GESTATION LENGTH	-2	
SIRE CALVING EASE	6.2%	63%
DAUGHTER CALVING EASE	3.9%	60%
NET MERIT \$	984	

GTPI
2840

AUSTRALIAN INDICES (08/2019)

BPI	290	66%
HWI	233	59%
TWI	273	65%
OVERALL TYPE	102	59%
MAMMARY	108	59%
DAUGHTER FERTILITY	108	54%
HEAT TOLERANCE	91	38%



EcoFeed 101

\$80.00 SexedULTRA

Edg Noble

VERDE

Noble x Silver x Altafrido

HBN: H0840003132353601

NASIS: STGVERDE

BETA CASEIN: A1/A2

NAAB: 551H003786

Sire: Mr Spring Noble
MG Sire: Seagull Bay SilverDam: Edg 55301 Siv 32149
MG Dam: Edg Riley Embass 55301

USDA - CDCB GENOMIC SIRE EVALUATION | AUGUST 2019 | DTRS 0 HERDS 0 | 78% REL

MILK LBS	FAT LBS	FAT %	PROT LBS	PROT %
1217	75	0.11	46	0.03

USDA CDCB TYPE SUMMARY 08/2019

PTAT +1.91 76%R UDC+2.85 FLC+1.14 BSC -0.10 0 D / 0 H

Stature	+0.33	Tall			
Strength	-0.06	Frail			
Body Depth	-0.53	Shallow			
Dairy Form	+0.33	Open Rib			
Rump Angle	+0.71	Sloped			
Thurl Width	+0.40	Wide			
Rear Legs-Side View	-0.35	Posty			
Rear Legs-Rear View	+1.14	Straight			
Foot Angle	+1.35	Steep			
Feet & Legs Score	+1.05	High			
F. Udder Attachment	+2.98	Strong			
Rear Udder Height	+3.66	High			
Rear Udder Width	+3.37	Wide			
Udder Cleft	+1.10	Strong			
Udder Depth	+2.27	Shallow			
Front Teat Placement	+1.44	Close			
Rear Teat Placement	+1.27	Close			
Teat Length	-0.98	Short			

MGGD: CO VISTA ROBUSTY RILEY



CALVING, HEALTH, FERTILITY USDA - CDCB EVALUATION

DAUGHTER PREGNANCY RATE	+1.9	72%
PRODUCTIVE LIFE	+7.7	73%
FERTILITY INDEX	+2.3	
LIVABILITY	+3.5	68%
SOMATIC CELL SCORE	2.53	74%
GESTATION LENGTH	-1	
SIRE CALVING EASE	6.9%	61%
DAUGHTER CALVING EASE	3.2%	56%
NET MERIT \$	894	

AUSTRALIAN INDICES (08/2019)

BPI	326	65%
HWI	283	58%
TWI	324	64%
OVERALL TYPE	103	55%
MAMMARY	109	55%
DAUGHTER FERTILITY	111	50%
HEAT TOLERANCE	96	38%



EcoFeed 110

\$70.00 SexedULTRA4M

Delicious HN

VINCE

High Noon x Nominee x Robust

HBN: H0840003146616332

NASIS: STGVINCE

BETA CASEIN: A1/A2

NAAB: 551H003804

Sire: Mr Detour High Noon
MG Sire: De Su NomineeDam: Ms Delicious Nom 60028
MG Dam: Miss Ocd Robst Delicious VG87

USDA - CDCB GENOMIC SIRE EVALUATION | AUGUST 2019 | DTRS 0 HERDS 0 | 78% REL

MILK LBS	FAT LBS	FAT %	PROT LBS	PROT %
2117	70	-0.03	77	0.04

USDA CDCB TYPE SUMMARY 08/2019

PTAT +1.88 74%R UDC+1.71 FLC+1.11 BSC -0.30 0 D / 0 H

Stature	+1.19	Tall			
Strength	-0.13	Frail			
Body Depth	-0.08	Shallow			
Dairy Form	+1.46	Open Rib			
Rump Angle	-0.66	High Pins			
Thurl Width	+1.23	Wide			
Rear Legs-Side View	+0.73	Sickle			
Rear Legs-Rear View	+1.04	Straight			
Foot Angle	+1.14	Steep			
Feet & Legs Score	+1.31	High			
F. Udder Attachment	+1.74	Strong			
Rear Udder Height	+2.66	High			
Rear Udder Width	+2.45	Wide			
Udder Cleft	+0.97	Strong			
Udder Depth	+1.57	Shallow			
Front Teat Placement	+0.78	Close			
Rear Teat Placement	+0.84	Close			
Teat Length	-1.40	Short			

MGGD: MISS OCD ROBST DELICIOUS



CALVING, HEALTH, FERTILITY USDA - CDCB EVALUATION

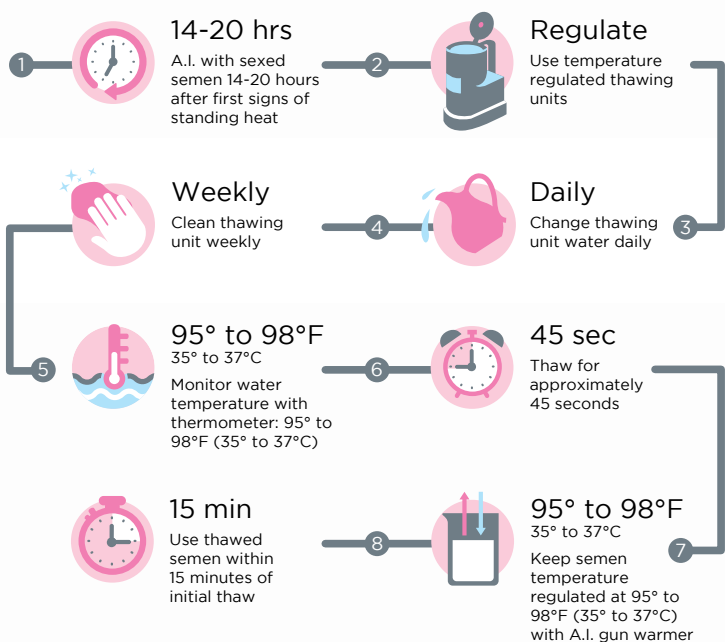
DAUGHTER PREGNANCY RATE	+2.1	72%
PRODUCTIVE LIFE	+8.6	73%
FERTILITY INDEX	+3.0	
LIVABILITY	+3.6	67%
SOMATIC CELL SCORE	2.73	75%
GESTATION LENGTH	+0	
SIRE CALVING EASE	6.0%	59%
DAUGHTER CALVING EASE	3.7%	3.7%
NET MERIT \$	949	

\$28.00 Conv



A.I. RECOMMENDATIONS

FOR
SexedULTRA4M
High fertility sex sorted semen



Tjr Everest

WATSON

SexedULTRA4M

NEW

Everest x Rubicon x Supersire

60% Black

HBN: H0840003128013733

NASIS: STGWATSON

BETA CASEIN: A2/A2

NAAB: 551H003637

Sire: Sandy Valley Everest

Dam: Synergy Rubicon Drew

MG Sire: Edg Rubicon

MG Dam: Synergy Supersire 5321 VG86

USDA - CDCB GENOMIC SIRE EVALUATION | AUGUST 2019 | DTRS 0 HERDS 0 | 78% REL

MILK LBS	FAT LBS	FAT %	PROT LBS	PROT %
1298	117	0.24	56	0.06

USDA CDCB TYPE SUMMARY 08/2019

PTAT +0.93 76%R UDC+1.03 FLC+1.04 BSC +0.17 0 D / 0 H

			-2	-1	0	1	2
Stature	-0.13	Short					
Strength	+0.15	Strong					
Body Depth	-0.39	Shallow					
Dairy Form	+0.00	Open Rib					
Rump Angle	-0.84	High Pins					
Thurl Width	+0.70	Wide					
Rear Legs-Side View	-0.82	Posty					
Rear Legs-Rear View	+1.28	Straight					
Foot Angle	+0.39	Steep					
Feet & Legs Score	+0.87	High					
F. Udder Attachment	+1.43	Strong					
Rear Udder Height	+1.13	High					
Rear Udder Width	+1.04	Wide					
Udder Cleft	+0.18	Strong					
Udder Depth	+0.88	Shallow					
Front Teat Placement	+0.15	Close					
Rear Teat Placement	+0.12	Close					
Teat Length	+0.10	Long					

DAM: SYNERGY RUBICON DREW



CALVING, HEALTH, FERTILITY USDA - CDCB EVALUATION

DAUGHTER PREGNANCY RATE	+0.0	73%
PRODUCTIVE LIFE	+7.2	74%
FERTILITY INDEX	+0.3	
LIVABILITY	+3.9	67%
SOMATIC CELL SCORE	2.75	76%
GESTATION LENGTH	+0	
SIRE CALVING EASE	6.9%	62%
DAUGHTER CALVING EASE	2.5%	57%
NET MERIT \$	982	

GTPI
2702

AUSTRALIAN INDICES (08/2019)

BPI	217	64%
HWI	178	56%
TWI	197	62%
OVERALL TYPE	99	49%
MAMMARY	103	49%
DAUGHTER FERTILITY	103	44%
HEAT TOLERANCE	95	38%



EcoFeed 101

\$80.00 **SexedULTRA4M**

Supplementary List

NAAB	NASIS	NAME	PEDIGREE	A2	BPI	TPI	Conv RRP \$	Sexed RRP \$
151HO00285	AIBAYLABOY	DRAKKAR BAYLABOY	KINGBOY X GARRETT	A2A2	125	2532	20.00	
515HO00254	AIAPPLEPIE	CAPS APPLE PIE RED	OLYMPIAN X NUMERO UNO	A1A2	273	2300	32.00	
515HO00220	AIBLOOPER	DG ALBERO BLOOPER	BOSS X BEACON	A2A2	321	2267	14.00	
288HO00169	AIECLAIR	WILSBRO KL ÉCLAIR	LANCOME X NUMERO UNO	A2A2	241	2348	10.00	
307HO00005	AIELDORADO	DG ALBERO ELDORADO	MONTROSS X SUPERSIRE	A1A2	183	2556	14.00	
288HO00168	AIJACOT	JACOT RED	SYMPATICO X LAUTHORITY	A1A2	88	1927	30.00	
515HO00242	AILYNSTAR	DT LYNSTAR	PETRON X SNOWMAN	A1A2	140	2332	9.00	
515HO00131	AITAPIC	BROEKS TAPIC	EPIC X FREDDIE	A2A2	111	2227	12.00	
224HO04230	CBACHIEVE	GLAMOUR ACHIEVE	ALTASPRING X ALTAIOTA	A2A2	160	2430	18.00	
522HO04617	CBALADDIN	R DG ABDALLAH RED	ENTITLE X OLYMPIAN	A1A2	263	2429		40.00
286HO00106	CBBALLOFWAX	MAPEL WOOD BALL OF WAX PP	STYLE P X LADD P	A2A2	179	2054	8.00	
522HO03761	CBCORONA	SJK CORONA	MONTANA X SUPERSHOT	A2A2	269	2565		48.00
224HO03628	CBCRAVEN	GLAMOUR JABIR CRAVEN	JABIR X ARMITAGE	A1A2	244	2253	10.00	
224HO03187	CBDREAMER	WILTOR DREAMER	SUPERSIRE X EXPLODE	A1A2	300	2285	10.00	
224HO04274	CBLOTTACCLASS	O'CONNORS LOTTA CLASS	ALTA1STCLASS X MCCUTCHEN	A2A2	232	2246	14.00	
286HO00103	CBMAINTIME	OCONNORS VOGUE MAIN TIME	MAINEVENT X NUMERO UNO	A2A2	206	2352	15.00	
224HO04026	CBMOAT	COGENT DE CROB MOAT	KINGBOY X MOGUL	A2A2	200	2406	13.00	50.00
286HO00105	CBPRIZIM	DUPASQUIER PRIZIM	PEPPER X NUMERO UNO	A2A2	320	2397	14.00	
224HO03732	CBREGENT	LAURELHILL REGENT	PRINCE X MAESTRO	A1A2	70	1963	14.00	
224HO04273	CBSELFIE	SILVERCAP SELFIE RC	SUPERSHOT X AIKMAN	A1A2	256	2443	12.00	
224HO03262	CBSUPERPOLL	PG SUPERPOLL	SUPERSIRE X LARON P	A1A2	133	2001	12.00	
224HO04232	CBTIMBER	ALEXERIN HIGH OCTANE TIMBER	HIGHOCTANE X SUPERSIRE	A1A1	220	2263	12.00	
286HO00107	CBYODA	SWISSBEC YODA -P	JEDI X MARDI GRAS	A1A2	166	2465	18.00	
224HO02877	COGENTCELEB	COGENT CELEB P	DAKKAR X MITY	N/A	129	1803	10.00	
151HO03705	ECLBLACKWOOD	ECLIPSE BLACKWOOD	SOLOMON X HIGH OCTANE	A1A2	102	2113	70.00	120.00
522HO03545	STGDYSON	MR COMANCHE DYSON	COMANCHE X ROBUST	A1A2	223	2507		50.00
551HO03583	STGGOFAST	MR RI-VAL-RE GO FAST-RED	SALVATORE RC X DELTA	A1A1	237	2610		48.00
522HO05006	STGHAZE	COOKIECUTTER HAZE	EXPRESSO X MONTROSS	A1A2	181	2584		40.00
551HO03459	STGHIGHNOON	MR DETOUR HIGH NOON	DETOUR X NOMINEE	A1A2	226	2689		50.00
551HO03663	STGJONES	ST GEN RUBICON JONES	RUBICON X JOSUPER	A1A2	275	2726		60.00
151HO03593	STGNEWTON	MR M-DUKE NEWTON	MEGA-DUKE X NUMERO UNO	A1A2	230	2691	24.00	
551HO03632	STGREBEL	ST GEN DELTA REBEL	DELTA X RUBICON	A2A2	287	2733		65.00
551HO03556	STGREINO	GENOSOURCE JSPP REINO	JOSUPER X MONTROSS	A1A2	233	2652		55.00
551HO03684	STGROCKFORD	HILMAR C ROCKFORD	CHARLEY X YODER	A1A1	257	2686		50.00
551HO03674	STGSHOOTER	EDG OUTSIDERS SHOOTER	OUTSIDERS X SILVER	A2A2	255	2667		50.00
551HO03688	STGUPGRADE	OUR-FAVORITE UPGRADE	CRUSH X ATWOOD	A2A2	92	2145		65.00
522HO03414	STGWINGS	BUTZ-HILL SILVER WINGS	SILVER X SUPERSIRE	A2A2	246	2599		48.00



Stgenetics Australia Office
PO BOX 3116, ALBURY NSW 2640
P: 0260 404 373
E: cbourke@stgen.com

Peter Semmens
General Manager
P: 0488 404 373
E: psemmens@stgen.com

Martin Glennen
Area Sales Manager – Western Victoria & SA
P: 0408 926 277
E: mglenn@stgen.com

Phil McKenna
Area Sales Manager – Nth Victoria & Riverina
P: 0427 662 104
E: pmckenna@stgen.com

Cathy Bourke
Customer Service Manager
P: 0437 218 116
E: cbourke@stgen.com

Carmel Clarke
Product development / Genomics
P: 0428 319 168
E: cclarke@stgen.com

Mal Nikora
Area Sales Manager – Gippsland & WA
P: 0477 404 373
E: mnikora@stgen.com

Brett Sweetnam
Breeding Advisor - NSW & Qld
P: 0424 381 618
E: brett.sweetnam@optusnet.com.au

Have you visited our new website?

Take a look today...

www.stgenetics.com.au

Limitation of liability: This information is from the sources we believe to be reliable and accurate, nevertheless ST genetics Australia gives no warranty and makes no representation to the accuracy of such information. Any person relying upon any information set out herein does so entirely at their own risk and shall not have any claim against ST genetics Australia for any loss or damage which they sustain notwithstanding any negligence on the part of ST genetics Australia in relation thereto. All prices quoted in this catalogue are excluding GST.

