



# Sire Directory

## SPRING 2019



**Alta COW WATCH**  
Repro, health & welfare



# BPI GENOMIC PACK

## GROUP AVERAGES:

BPI	330	Survial	112
CE	102	Daughter Fertility	112

*\$16 + gst when purchasing a minimum of 25 units of any 2 bulls*



Dam of AltaTBAY – NO-FLA DREW-ET  
Dam of AltaMOLINA – PEAK BLING-ET

MGGD of AltaRX P – KOEPON LBY P MIDNITE 4  
Dam of AltaSTAFFORD – OCD SPRING 35509-ET

Dam of AltaZONE – BRU-DALE ZERONICA-ET  
Dam of AltaBACK9 – PEAK CLOUD9-ET





## AltaTBAY

PEAK AltaTBAY-ET

Charley x Silver x AltaOAK

NASIS Code: 011H012246 | Herdbook: 840M003145229969



M 669 | F 32 +.05% | P 27 +.16% Type 102 | Mammary 105 | Milking Speed 102  
Temperament 102 | Likability 105 | Survival 112 | CE 102 | SCC 166 | Dtr Fertility 109

ASI 176 BPI 348



## AltaMOLINA

PEAK AltaMOLINA-ET

AltaNIXER x Main Event x Numero Uno

NASIS Code: 011H012132 | Herdbook: 840M003138498982



M 591 | F 19 -.09% | P 22 +.11% | Type 100 | Mammary 105 | Milking Speed 101  
Temperament 102 | Likability 105 | Survival 112 | CE 103 | SCC 169 | Dtr Fertility 116

ASI 124 BPI 345



## AltaRX P

Koepon AltaRX P

Blowtorch x Powerball-P x Epic

NASIS Code: 011H012354 | Herdbook: NLDM000648499961

M 509 | F 24 +.03% | P 23 +.17% | Type 100 | Mammary 105 | Milking Speed 103  
Temperament 103 | Likability 105 | Survival 110 | CE 101 | SCC 150 | Dtr Fertility 112

ASI 150 BPI 328



## AltaSTAFFORD

PEAK AltaSTAFFORD-ET

Charley x AltaSPRING x Supersire

NASIS Code: 011H012258 | Herdbook: 840M003145229768



M 77 | F 39 +.11% | P 29 +.16% | Type 104 | Mammary 105 | Milking Speed 100  
Temperament 104 | Likability 105 | Survival 113 | CE 102 | SCC 162 | Dtr Fertility 106

ASI 194 BPI 326



## AltaZONE

PEAK AltaZONE-ET

Superhero x Silver x Supersire

NASIS Code: 011H012130 | Herdbook: 840M003139851853



M 439 | F 32 +.19% | P 18 +.12% | Type 105 | Mammary 104 | Milking Speed 102  
Temperament 103 | Likability 105 | Survival 113 | CE 101 | SCC 172 | Dtr Fertility 111

ASI 138 BPI 322



## AltaBACK9

PEAK Alta-BACK9

Flagship x Supershot x Facebook

NASIS Code: 011H012259 | Herdbook: 840M003145229764

M 630 | F 18 -.13% | P 18 +.02% | Type 102 | Mammary 107 | Milking Speed 99  
Temperament 102 | Likability 104 | Survival 110 | CE 103 | SCC 173 | Dtr Fertility 115

ASI 95 BPI 310

# AltaROBLE 011H011380

LONE-OAK-ACRES ALTAROBLE-ET  
MOGUL X OBSERVER  
HOUSAM000069829747 | DOB 10/12/2012  
CDCB & HA-USA Genetic Evaluations 08/2019



Jon-De Roble 7566

\$28 +gst



TPI 2421 NM\$ 526

- ▲ Breed Leading Udders
- ▲ Milking daughters globally
- ▲ High Likability
- ▲ Australian daughters are impressive

## PRODUCTION (2992 dtrs / 676 herds) HEALTH

Milk	815	Lbs	99%R	PL	3.7	DPR	2.3
Protein	30	Lbs	+0.02%	LIV	0.9	CCR	2.0
Fat	37	Lbs	+0.02%	SCS	2.74	HCR	0.7

## CONFORMATION (1030 dtrs / 293 herds)

PTAT	2.61	UDC	3.26
FLC	1.41	Rel	97%

	-2	-1	0	1	2	
Stature						+1.26 Tail
Strength						+0.52 Strong
Body Depth						+0.70 Deep
Dairy form						+1.51 Open
Rump Angle						+0.32 Sloped
Thurl Width						+1.99 Wide
R. Legs-S View						-0.06 Posty
R. Legs-R View						+1.55 Straight
Foot Angle						+1.55 Steep
F&L Score						+1.52 High
F. Udder Att.						+4.36 Strong
R. Udder Ht.						+3.71 High
R. Udder Wid.						+3.41 Wide
Udder Cleft						+1.73 Strong
Udder Depth						+3.36 Shallow
F. Teat Place						+2.58 Close
R. Teat Place						+2.06 Close
Teat Length						-1.15 Short

## CALVING TRAITS

Sire Calving Ease	7.7	99 % R	8540 Observ	
Dtr Calving Ease	5.4	94 % R	1138 Observ	1844 dtr.
Sire stillbirth	7.9	96 % R	8192 Observ	
Daughter stillbirth	5.7	94 % R	1107 Observ	1828 dtr.

BPI 295 86% TWI 343 85% HWI 268 78%

ASI 86

## PRODUCTION (ABV August 2019)

Milk	768	L	
Fat	14	kg	-0.27 %
Protein	20	kg	-0.02 %

Dtr: 150 Herds: 29 94%R

## HEALTH

Cell Count	164	90 %R
Survival	114	78 %R
Dtr. Fertility	110	86 %R
Calving Ease	101	93 %R

## WORKABILITIES

Milking Speed	103	82 %R
Temperament	104	82 %R
Likability	106	82 %R

Dtr: 23 Herds: 8

## TYPE PROOF (ABV August 2019) (62 dtrs / 10 herds)

Overall Type 107 Mammary System 113



Lu-Mann Aerobel - Lact 3

# AltaRABO

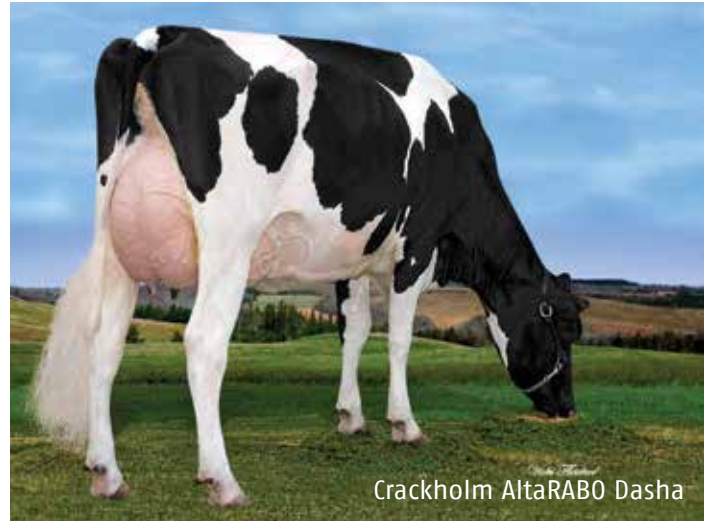
011H011379

LONE-OAK-ACRES ALTARABO-ET

MOGUL X OBSERVER

HOUSAM000069829746 | DOB 10/14/2012

CDCB & HA-USA Genetic Evaluations 08/2019



Crackholm AltaRABO Dasha

\$24 +gst

**A2 Type**

**TPI 2431 NM\$ 631**

- ▲ High BPI
- ▲ Reliable calving ease
- ▲ Moderate size black dtrs with fancy udders
- ▲ A2A2 and 107 Likability

## PRODUCTION (6919 dtrs / 1296 herds) HEALTH

Milk	856	Lbs	99%R	PL	3.8	DPR	-0.4
Protein	34	Lbs	+0.03%	LIV	-0.4	CCR	-0.2
Fat	66	Lbs	+0.12%	SCS	2.64	HCR	-0.6

## CONFORMATION (2010 dtrs / 517 herds)

PTAT	2.09	UDC	2.92
FLC	1.33	Rel	97%

	-2	-1	0	1	2	
Stature						+0.76 Tall
Strength						+0.28 Strong
Body Depth						+0.45 Deep
Dairy form						+1.57 Open
Rump Angle						+1.25 Sloped
Thurl Width						+2.00 Wide
R. Legs-S View						-0.02 Posty
R. Legs-R View						+1.88 Straight
Foot Angle						+0.93 Steep
F&L Score						+1.25 High
F. Udder Att.						+3.60 Strong
R. Udder Ht.						+3.72 High
R. Udder Wid.						+3.42 Wide
Udder Cleft						+0.38 Strong
Udder Depth						+2.62 Shallow
F. Teat Place						+1.35 Close
R. Teat Place						+1.00 Close
Teat Length						-0.79 Short

## CALVING TRAITS

Sire Calving Ease	5.4	99 % R	19398 Observ	
Dtr Calving Ease	4.5	95 % R	1670 Observ	3558 dtr.
Sire stillbirth	6.5	98 % R	18712 Observ	
Daughter stillbirth	5.5	95 % R	1331 Observ	3295 dtr.

**BPI 284 88% TWI 331 87% HWI 250 80%**

**ASI 112**

## PRODUCTION (ABV August 2019)

Milk	816	L	
Fat	27	kg	-0.11 %
Protein	21	kg	-0.02 %

Dtr: 403 Herds: 64 98%R

## HEALTH

Cell Count	174	93 %R
Survival	112	80 %R
Dtr. Fertility	104	88 %R
Calving Ease	102	98 %R

## WORKABILITIES

Milking Speed	102	91 %R
Temperament	104	91 %R
Likability	107	91 %R

Dtr: 80 Herds: 17

## TYPE PROOF (ABV August 2019) (30 dtrs / 12 herds)

Overall Type 107 Mammary System 109



MGD: Lone-Oak-Acres PS Reese-ET



# AltaDJ-RED

011H000593

KOEPON ALTADJ-RED

ALASKA RED X DELTA

HONLDM000648499923 | DOB 2/8/2018

CDCB & HA-USA Genetic Evaluations 08/2019



\$20 +gst

TPI 2523  
NM\$ 719

- ▲ High Production, great Health profile & A2A2
- ▲ Moderate, open dairy frames
- ▲ Great UDC +2.44

PRODUCTION (0 dtrs / 0 herds)				HEALTH			
Milk	1599 Lbs	76%R	PL	5.8	DPR	0.1	
Protein	50 Lbs	0.00%	LIV	2.3	CCR	0.0	
Fat	62 Lbs	+0.01%	SCS	2.70	HCR	1.8	

CONFORMATION (0 dtrs / 0 herds)			
PTAT	1.94	UDC	2.44
FLC	1.37	Rel	74%

	-2	-1	0	1	2	
Stature						+0.73 Tail
Strength						+0.37 Strong
Body Depth						+0.46 Deep
Dairy form						+1.78 Open
Rump Angle						+0.14 Sloped
Thurl Width						+1.20 Wide
R. Legs-S View						-0.14 Posty
R. Legs-R View						+1.52 Straight
Foot Angle						+1.46 Steep
F&L Score						+1.34 High
F. Udder Att.						+2.35 Strong
R. Udder Ht.						+3.94 High
R. Udder Wid.						+3.62 Wide
Udder Cleft						+0.71 Strong
Udder Depth						+0.90 Shallow
F. Teat Place						+1.15 Close
R. Teat Place						+1.01 Close
Teat Length						-0.50 Short

CALVING TRAITS				
Sire Calving Ease	7.0	61 % R	0 Observ	
Dtr Calving Ease	5.9	56 % R	0 Observ	0 dtr.
Sire stillbirth	7.1	55 % R	0 Observ	
Daughter stillbirth	5.7	54 % R	0 Observ	0 dtr.

# AltaC-RED

011H000592

BLONDIN ALTAC-RED

SALVATORE RC X RUBICON

HOCANM000110621397 | DOB 8/29/2017

CDCB & HA-USA Genetic Evaluations 08/2019



\$24 +gst

TPI 2593  
NM\$ 760

- ▲ Great Health +7.3PL and SCS +2.58
- ▲ High gTPI red sire +2593
- ▲ Great PTAT +2.05

PRODUCTION (0 dtrs / 0 herds)				HEALTH			
Milk	1125 Lbs	79%R	PL	7.3	DPR	1.0	
Protein	44 Lbs	+0.03%	LIV	4.2	CCR	1.8	
Fat	64 Lbs	+0.08%	SCS	2.58	HCR	1.4	

CONFORMATION (0 dtrs / 0 herds)			
PTAT	2.05	UDC	1.93
FLC	2.05	Rel	74%

	-2	-1	0	1	2	
Stature						+1.66 Tail
Strength						+0.96 Strong
Body Depth						+0.27 Deep
Dairy form						+0.24 Open
Rump Angle						-0.06 High Pins
Thurl Width						+1.30 Wide
R. Legs-S View						-0.30 Posty
R. Legs-R View						+2.22 Straight
Foot Angle						+1.98 Steep
F&L Score						+2.21 High
F. Udder Att.						+2.66 Strong
R. Udder Ht.						+2.82 High
R. Udder Wid.						+2.59 Wide
Udder Cleft						+0.21 Strong
Udder Depth						+2.18 Shallow
F. Teat Place						+0.39 Close
R. Teat Place						+0.30 Close
Teat Length						+0.59 Long

CALVING TRAITS				
Sire Calving Ease	7.4	63 % R	0 Observ	
Dtr Calving Ease	4.6	58 % R	0 Observ	0 dtr.
Sire stillbirth	7.2	59 % R	0 Observ	
Daughter stillbirth	4.7	57 % R	0 Observ	0 dtr.

# AltaROBSON 011H011778

BOMAZ ALTAROBSON-ET  
RUBICON X BOB  
HOUSAM000073953484 | DOB 8/24/2015  
CDCB & HA-USA Genetic Evaluations 08/2019



\$26 +gst | \$60 sexed + gst

**TPI 2713**  
**NM\$ 901**

- ▲ International sire of sons
- ▲ Balanced dairy strength
- ▲ Extreme Health & Components
- ▲ Top 10 TPI sire A2A2

PRODUCTION (16 dtrs / 8 herds)				HEALTH			
Milk	601	Lbs	86%R	PL	7.0	DPR	2.2
Protein	55	Lbs	+0.13%	LIV	3.5	CCR	3.2
Fat	93	Lbs	+0.26%	SCS	2.78	HCR	5.3

CONFORMATION (0 dtrs / 0 herds)			
PTAT	1.36	UDC	1.05
FLC	1.03	Rel	79%

	-2	-1	0	1	2	
Stature						+1.28 Tail
Strength						+1.28 Strong
Body Depth						+0.83 Deep
Dairy form						+0.57 Open
Rump Angle						+0.10 Sloped
Thurl Width						+1.48 Wide
R. Legs-S View						+0.54 Sickle
R. Legs-R View						+1.61 Straight
Foot Angle						+0.99 Steep
F&L Score						+1.08 High
F. Udder Att.						+1.92 Strong
R. Udder Ht.						+1.44 High
R. Udder Wid.						+1.32 Wide
Udder Cleft						+0.11 Strong
Udder Depth						+1.25 Shallow
F. Teat Place						+1.13 Close
R. Teat Place						+0.75 Close
Teat Length						-0.74 Short

CALVING TRAITS				
Sire Calving Ease	6.0	99 % R	8703 Observ	
Dtr Calving Ease	2.9	89 % R	12 Observ	12 dtr.
Sire stillbirth	5.6	98 % R	8219 Observ	
Daughter stillbirth	3.4	87 % R	10 Observ	10 dtr.

# AltaTOPSHOT 011H011779

BOMAZ ALTATOPSHOT-ET  
SUPERSHOT X AltaEMBASSY  
HOUSAM000073953444 | DOB 6/10/2015  
CDCB & HA-USA Genetic Evaluations 08/2019



\$35 +gst | \$60 sexed + gst

**TPI 2754**  
**NM\$ 987**

- ▲ Perfect modern day sire
- ▲ Top 5 TPI Sire A2A2
- ▲ Impressive 178 CFP
- ▲ Moderates frames, lowers pins, lengthens teats

PRODUCTION (164 dtrs / 30 herds)				HEALTH			
Milk	2128	Lbs	95%R	PL	7.4	DPR	1.3
Protein	79	Lbs	+0.05%	LIV	3.0	CCR	1.8
Fat	99	Lbs	+0.07%	SCS	2.65	HCR	0.9

CONFORMATION (0 dtrs / 0 herds)			
PTAT	0.82	UDC	0.92
FLC	0.08	Rel	79%

	-2	-1	0	1	2	
Stature						+0.54 Tail
Strength						+0.52 Strong
Body Depth						+0.52 Deep
Dairy form						+0.58 Open
Rump Angle						+0.62 Sloped
Thurl Width						+0.92 Wide
R. Legs-S View						+0.27 Sickle
R. Legs-R View						+0.06 Straight
Foot Angle						+0.06 Steep
F&L Score						+0.21 High
F. Udder Att.						+0.96 Strong
R. Udder Ht.						+1.64 High
R. Udder Wid.						+1.51 Wide
Udder Cleft						+0.72 Strong
Udder Depth						+0.23 Shallow
F. Teat Place						-0.06 Wide
R. Teat Place						+0.38 Close
Teat Length						+0.19 Long

CALVING TRAITS				
Sire Calving Ease	5.9	99 % R	8700 Observ	
Dtr Calving Ease	3.4	88 % R	133 Observ	133 dtr.
Sire stillbirth	5.8	98 % R	8460 Observ	
Daughter stillbirth	3.9	85 % R	132 Observ	132 dtr.



# Alta ADVANTAGE



## **CUSTOMIZE YOUR GENETIC PLAN** to

select for the *right* production, health, and conformation traits to match your farm's goals.



## **GET PRIORITY ACCESS** and a

no-hassle approach to the best genetics that match how you're paid for milk and the reasons why cows leave your herd.



## We help implement your plan, rank your females, and **TRACK YOUR RESULTS**

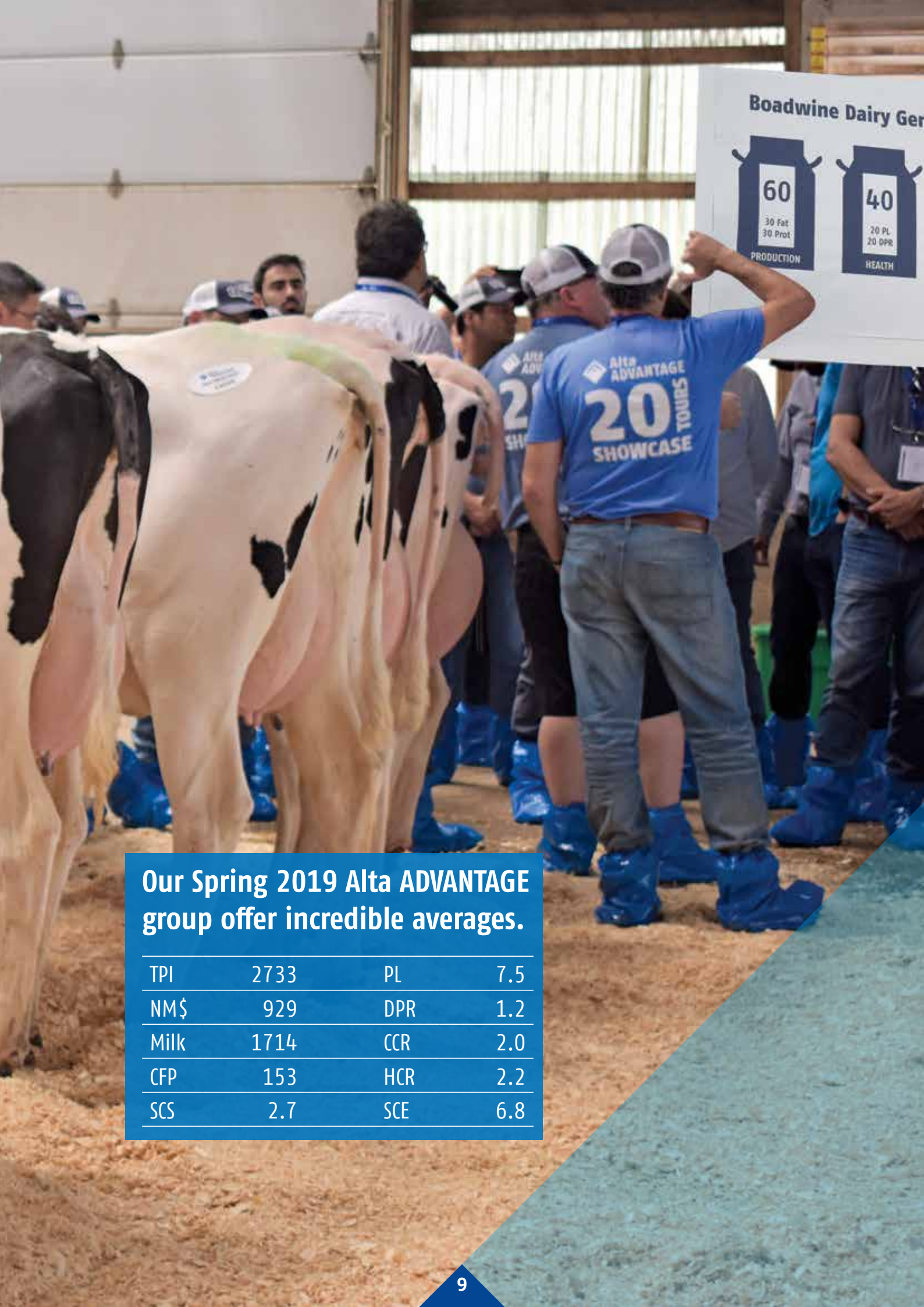
to ensure continual progress toward your goals.

## Create more Alta 4-EVENT COWS

with priority access to the *right* genetics to match your goals.







**Our Spring 2019 Alta ADVANTAGE group offer incredible averages.**

TPI	2733	PL	7.5
NM\$	929	DPR	1.2
Milk	1714	CCR	2.0
CFP	153	HCR	2.2
SCS	2.7	SCE	6.8

# AltaLAWSON 011H012157

PEAK ALTALAWSON-ET  
AltaROBSON X DELTA  
H0840M003142181099 | DOB 4/14/2017  
CDCB & HA-USA Genetic Evaluations 08/2019



G-STAR ♀ 511 A2

\$50 +gst | \$75 sexed + gst

TPI 2801  
NM\$ 987

- ▲ Alta's former #1 sire
- ▲ Global demand sire of sons
- ▲ High ranking TPI, NM, CM

PRODUCTION (0 dtrs / 0 herds)				HEALTH			
Milk	476	Lbs	78%R	PL	7.6	DPR	2.2
Protein	56	Lbs	+0.15%	LIV	4.1	CCR	3.8
Fat	105	Lbs	+0.32%	SCS	2.77	HCR	4.1

CONFORMATION (0 dtrs / 0 herds)			
PTAT	1.38	UDC	1.60
FLC	0.79	Rel	76%

	-2	-1	0	1	2	
Stature						+1.67 Tail
Strength						+0.83 Strong
Body Depth						+0.65 Deep
Dairy form						+0.97 Open
Rump Angle						+0.80 Sloped
Thurl Width						+0.96 Wide
R. Legs-S View						+0.54 Sickle
R. Legs-R View						+0.94 Straight
Foot Angle						+1.20 Steep
F&L Score						+1.05 High
F. Udder Att.						+2.19 Strong
R. Udder Ht.						+2.20 High
R. Udder Wid.						+2.02 Wide
Udder Cleft						+0.68 Strong
Udder Depth						+2.20 Shallow
F. Teat Place						+0.99 Close
R. Teat Place						+0.78 Close
Teat Length						-1.28 Short

CALVING TRAITS				
Sire Calving Ease	7.0	76 % R	78 Observ	
Dtr Calving Ease	3.0	67 % R	0 Observ	0 dtr.
Sire stillbirth	6.4	65 % R	78 Observ	
Daughter stillbirth	3.6	63 % R	0 Observ	0 dtr.

# AltaROBERT 011H012286

SCHOENE-KUH ALTAROBERT-ET  
AltaROBSON X JOSUPER  
H0USAM000143796927 | DOB 6/19/2017  
CDCB & HA-USA Genetic Evaluations 08/2019



G-STAR ♀ 511 A2 Ge

NEW

\$50 +gst | \$75 sexed + gst

TPI 2822  
NM\$ 975

- ▲ New "big time" bull A2A2
- ▲ High TPI, NM & PL sire
- ▲ Extreme Fertility 4.1 DPR
- ▲ High ranking AltaROBSON son

PRODUCTION (0 dtrs / 0 herds)				HEALTH			
Milk	634	Lbs	78%R	PL	8.7	DPR	4.1
Protein	48	Lbs	+0.10%	LIV	5.2	CCR	5.5
Fat	88	Lbs	+0.23%	SCS	2.67	HCR	5.4

CONFORMATION (0 dtrs / 0 herds)			
PTAT	1.31	UDC	1.56
FLC	1.55	Rel	75%

	-2	-1	0	1	2	
Stature						+0.23 Tail
Strength						+0.29 Strong
Body Depth						-0.39 Shallow
Dairy form						-0.40 Tight
Rump Angle						-0.66 High Pins
Thurl Width						+0.88 Wide
R. Legs-S View						-0.35 Posty
R. Legs-R View						+1.64 Straight
Foot Angle						+1.10 Steep
F&L Score						+1.44 High
F. Udder Att.						+2.06 Strong
R. Udder Ht.						+1.84 High
R. Udder Wid.						+1.69 Wide
Udder Cleft						+0.15 Strong
Udder Depth						+1.82 Shallow
F. Teat Place						+0.30 Close
R. Teat Place						+0.04 Close
Teat Length						-0.88 Short

CALVING TRAITS				
Sire Calving Ease	6.2	71 % R	22 Observ	
Dtr Calving Ease	2.9	67 % R	0 Observ	0 dtr.
Sire stillbirth	6.0	63 % R	22 Observ	
Daughter stillbirth	3.7	62 % R	0 Observ	0 dtr.



# AltaRISEN

011H012404

G-DERUYTER ALTARISEN-ET

AltaROBSON X RUBICON

H0840M003145240286 | DOB 11/29/2017

CDCB & HA-USA Genetic Evaluations 08/2019



**NEW**

\$24 +gst

**TPI 2705**  
**NM\$ 909**

- ▲ Great dairy strength
- ▲ High Fat 106 lbs +0.27%
- ▲ Interestingly bred sire
- ▲ A2A2 & BB Sire

PRODUCTION (0 dtrs / 0 herds)				HEALTH			
Milk	823	Lbs	78%R	PL	6.9	DPR	1.5
Protein	50	Lbs	+0.09%	LIV	3.2	CCR	1.9
Fat	106	Lbs	+0.27%	SCS	2.78	HCR	3.5

CONFORMATION (0 dtrs / 0 herds)			
PTAT	1.50	UDC	1.53
FLC	0.69	Rel	74%

	-2	-1	0	1	2	
Stature						+0.88 Tail
Strength						+1.18 Strong
Body Depth						+0.60 Deep
Dairy form						-0.10 Tight
Rump Angle						-0.42 High Pins
Thurl Width						+0.82 Wide
R. Legs-S View						+0.45 Sickle
R. Legs-R View						+1.26 Straight
Foot Angle						+0.77 Steep
F&L Score						+0.65 High
F. Udder Att.						+2.63 Strong
R. Udder Ht.						+1.78 High
R. Udder Wid.						+1.64 Wide
Udder Cleft						-0.09 Weak
Udder Depth						+1.67 Shallow
F. Teat Place						+1.21 Close
R. Teat Place						+0.12 Close
Teat Length						-0.01 Short

CALVING TRAITS				
Sire Calving Ease	7.3	62 % R	0 Observ	
Dtr Calving Ease	3.2	59 % R	0 Observ	0 dtr.
Sire stillbirth	6.1	59 % R	0 Observ	
Daughter stillbirth	4.5	57 % R	0 Observ	0 dtr.

# AltaMORISON

011H012403

KP-ACK ALTAMORISON-ET

AltaROBSON X MONTROSS

H0840M003138125233 | DOB 1/14/2018

CDCB & HA-USA Genetic Evaluations 08/2019



**NEW**

\$24 +gst

**TPI 2722**  
**NM\$ 911**

- ▲ High CFP
- ▲ Balanced dairy strength
- ▲ Extreme Health and 1000lbs milk
- ▲ A2A2

PRODUCTION (0 dtrs / 0 herds)				HEALTH			
Milk	1000	Lbs	78%R	PL	7.3	DPR	2.3
Protein	53	Lbs	+0.08%	LIV	1.8	CCR	4.1
Fat	99	Lbs	+0.22%	SCS	2.68	HCR	3.9

CONFORMATION (0 dtrs / 0 herds)			
PTAT	1.08	UDC	1.28
FLC	1.15	Rel	75%

	-2	-1	0	1	2	
Stature						+0.48 Tail
Strength						+0.53 Strong
Body Depth						+0.07 Deep
Dairy form						+0.52 Open
Rump Angle						-0.19 High Pins
Thurl Width						+0.37 Wide
R. Legs-S View						-0.38 Posty
R. Legs-R View						+1.40 Straight
Foot Angle						+0.89 Steep
F&L Score						+1.08 High
F. Udder Att.						+1.32 Strong
R. Udder Ht.						+2.06 High
R. Udder Wid.						+1.90 Wide
Udder Cleft						+0.54 Strong
Udder Depth						+0.65 Shallow
F. Teat Place						+0.27 Close
R. Teat Place						+0.39 Close
Teat Length						-0.39 Short

CALVING TRAITS				
Sire Calving Ease	6.5	62 % R	0 Observ	
Dtr Calving Ease	3.8	59 % R	0 Observ	0 dtr.
Sire stillbirth	6.6	59 % R	0 Observ	
Daughter stillbirth	4.9	58 % R	0 Observ	0 dtr.

# AltaABBA

011H012264

PEAK ALTAABBA-ET  
BLOWTORCH X RUBICON  
H0840M003142181416 | DOB 5/31/2017  
CDCB & HA-USA Genetic Evaluations 08/2019



G-STAR **A2** Type

\$26 +gst

TPI 2744  
NM\$ 843

- ▲ Type & Production in one package
- ▲ A2A2
- ▲ Great Health traits with extreme daughter stillbirth 2.5%

PRODUCTION (0 dtrs / 0 herds)				HEALTH			
Milk	1599 Lbs	79%R	PL	5.7	DPR	1.6	
Protein	52 Lbs	+0.01%	LIV	2.1	CCR	3.0	
Fat	84 Lbs	+0.09%	SCS	2.62	HCR	3.8	

CONFORMATION (0 dtrs / 0 herds)			
PTAT	2.38	UDC	1.97
FLC	2.05	Rel	78%

	-2	-1	0	1	2	
Stature						+2.47 Tail
Strength						+1.57 Strong
Body Depth						+1.30 Deep
Dairy form						+1.03 Open
Rump Angle						+0.57 Sloped
Thurl Width						+0.94 Wide
R. Legs-S View						-0.77 Posty
R. Legs-R View						+2.73 Straight
Foot Angle						+2.96 Steep
F&L Score						+2.17 High
F. Udder Att.						+2.58 Strong
R. Udder Ht.						+2.97 High
R. Udder Wid.						+2.73 Wide
Udder Cleft						+1.59 Strong
Udder Depth						+2.17 Shallow
F. Teat Place						+2.25 Close
R. Teat Place						+2.15 Close
Teat Length						-1.53 Short

CALVING TRAITS				
Sire Calving Ease	6.5	63 % R	0 Observ	
Dtr Calving Ease	2.5	60 % R	0 Observ	0 dtr.
Sire stillbirth	6.8	60 % R	0 Observ	
Daughter stillbirth	2.5	59 % R	0 Observ	0 dtr.

# AltaGOPRO

011H012124

PEAK ALTAGOPRO-ET  
HELIX X MONTROSS  
H0840M003139733266 | DOB 2/7/2017  
CDCB & HA-USA Genetic Evaluations 08/2019



G-STAR **HEALTH PLUS** **A2** Type

\$32 +gst

TPI 2812  
NM\$ 928

- ▲ Exciting son of No.1 TPI sire Helix
- ▲ 182 lbs of CFP
- ▲ Outstanding combination of Performance, Health & Type

PRODUCTION (0 dtrs / 0 herds)				HEALTH			
Milk	2711 Lbs	79%R	PL	5.6	DPR	0.2	
Protein	80 Lbs	-0.01%	LIV	0.9	CCR	0.4	
Fat	102 Lbs		SCS	2.78	HCR	1.2	

CONFORMATION (0 dtrs / 0 herds)			
PTAT	2.61	UDC	2.06
FLC	0.94	Rel	78%

	-2	-1	0	1	2	
Stature						+2.05 Tail
Strength						+1.68 Strong
Body Depth						+1.80 Deep
Dairy form						+2.06 Open
Rump Angle						+0.42 Sloped
Thurl Width						+1.25 Wide
R. Legs-S View						+0.72 Sickle
R. Legs-R View						+0.91 Straight
Foot Angle						+1.33 Steep
F&L Score						+1.35 High
F. Udder Att.						+2.39 Strong
R. Udder Ht.						+3.63 High
R. Udder Wid.						+3.34 Wide
Udder Cleft						+1.31 Strong
Udder Depth						+1.00 Shallow
F. Teat Place						+2.09 Close
R. Teat Place						+1.81 Close
Teat Length						-1.18 Short

CALVING TRAITS				
Sire Calving Ease	7.6	91 % R	325 Observ	
Dtr Calving Ease	3.8	68 % R	0 Observ	0 dtr.
Sire stillbirth	7.0	80 % R	288 Observ	
Daughter stillbirth	4.3	63 % R	0 Observ	0 dtr.



# AltaEMIRATES 011H012169

PEAK ALTAEMIRATES-ET  
AltaFLYWHEEL X SILVER  
H0840M003139733285 | DOB 2/19/2017  
CDCB & HA-USA Genetic Evaluations 08/2019



\$26 +gst

TPI 2718  
NM\$ 845

- ▲ High Component production
- ▲ Different sire line
- ▲ Great Health trait profile

PRODUCTION (0 dtrs / 0 herds)				HEALTH			
Milk	1261	Lbs	79%R	PL	5.6	DPR	0.8
Protein	57	Lbs	+0.07%	LIV	1.3	CCR	1.9
Fat	90	Lbs	+0.15%	SCS	2.80	HCR	2.8

CONFORMATION (0 dtrs / 0 herds)			
PTAT	2.22	UDC	2.06
FLC	1.75	Rel	77%

	-2	-1	0	1	2	
Stature						+1.78 Tall
Strength						+0.38 Strong
Body Depth						+0.21 Deep
Dairy form						+1.00 Open
Rump Angle						-0.73 High Pins
Thurl Width						+0.60 Wide
R. Legs-S View						-0.53 Posty
R. Legs-R View						+1.95 Straight
Foot Angle						+1.83 Steep
F&L Score						+1.96 High
F. Udder Att.						+2.80 Strong
R. Udder Ht.						+2.83 High
R. Udder Wid.						+2.60 Wide
Udder Cleft						+0.60 Strong
Udder Depth						+2.29 Shallow
F. Teat Place						+1.42 Close
R. Teat Place						+1.03 Close
Teat Length						-0.80 Short

CALVING TRAITS					
Sire Calving Ease	7.2	72 % R	27 Observ		
Dtr Calving Ease	3.4	68 % R	0 Observ	0 dtr.	
Sire stillbirth	8.5	64 % R	27 Observ		
Daughter stillbirth	3.6	63 % R	0 Observ	0 dtr.	

# AltaLIAISON 011H012159

PEAK ALTALIAISON-ET  
AltaROBSON X DELTA  
H0840M003142181106 | DOB 4/23/2017  
CDCB & HA-USA Genetic Evaluations 08/2019



\$35 +gst

TPI 2738  
NM\$ 914

- ▲ High, wide rear udders
- ▲ A2A2 CONCEPT PLUS sire
- ▲ Balanced linear with sloped rumps
- ▲ Exceptional Health trait profile

PRODUCTION (0 dtrs / 0 herds)				HEALTH			
Milk	1205	Lbs	78%R	PL	7.2	DPR	1.7
Protein	64	Lbs	+0.10%	LIV	3.7	CCR	2.6
Fat	86	Lbs	+0.15%	SCS	2.72	HCR	2.0

CONFORMATION (0 dtrs / 0 herds)			
PTAT	1.63	UDC	1.49
FLC	1.13	Rel	76%

	-2	-1	0	1	2	
Stature						+1.78 Tall
Strength						+1.07 Strong
Body Depth						+1.14 Deep
Dairy form						+1.54 Open
Rump Angle						+0.81 Sloped
Thurl Width						+1.07 Wide
R. Legs-S View						+0.17 Sickle
R. Legs-R View						+1.44 Straight
Foot Angle						+1.16 Steep
F&L Score						+1.38 High
F. Udder Att.						+1.76 Strong
R. Udder Ht.						+2.40 High
R. Udder Wid.						+2.21 Wide
Udder Cleft						+0.92 Strong
Udder Depth						+1.42 Shallow
F. Teat Place						+0.87 Close
R. Teat Place						+0.98 Close
Teat Length						-0.50 Short

CALVING TRAITS					
Sire Calving Ease	6.4	72 % R	35 Observ		
Dtr Calving Ease	3.2	68 % R	0 Observ	0 dtr.	
Sire stillbirth	6.8	64 % R	35 Observ		
Daughter stillbirth	3.7	63 % R	0 Observ	0 dtr.	

# Meet 5677

AN ALTA 4-EVENT COW

**FRESH**

with a healthy calf and  
no metabolic issues

**BRED**

inseminated once

**PREG**

confirmed pregnant  
and does not abort

**DRY**

dried off, with no  
health problems



Work with your trusted Alta advisor to

**create more Alta  
4-EVENT COWS**



# AltaRECOIL

011H011736

PEAK ALTARECOIL-ET

AltaSPRING X JACEY

H0840M003130641796 | DOB 5/28/2015

CDCB & HA-USA Genetic Evaluations 08/2019



\$24 +gst | \$55 sexed +gst

TPI 2670  
NM\$ 763

- ▲ High fertility
- ▲ Great Health profile
- ▲ High, wide rear udders
- ▲ A2A2 CONCEPT PLUS sire

PRODUCTION (0 dtrs / 0 herds)				HEALTH			
Milk	1513 Lbs	81%R	PL	6.0	DPR	3.2	
Protein	61 Lbs	+0.05%	LIV	0.8	CCR	4.6	
Fat	53 Lbs	-0.01%	SCS	2.84	HCR	3.9	

CONFORMATION (0 dtrs / 0 herds)			
PTAT	1.82	UDC	2.43
FLC	1.67	Rel	79%

	-2	-1	0	1	2	
Stature						+0.12 Tail
Strength						-0.38 Frail
Body Depth						-0.46 Shallow
Dairy form						+1.40 Open
Rump Angle						+0.27 Sloped
Thurl Width						+0.70 Wide
R. Legs-S View						-0.47 Posty
R. Legs-R View						+1.80 Straight
Foot Angle						+1.13 Steep
F&L Score						+1.51 High
F. Udder Att.						+1.71 Strong
R. Udder Ht.						+3.50 High
R. Udder Wid.						+3.22 Wide
Udder Cleft						+1.85 Strong
Udder Depth						+1.34 Shallow
F. Teat Place						+1.39 Close
R. Teat Place						+1.58 Close
Teat Length						-1.14 Short

CALVING TRAITS				
Sire Calving Ease	6.2	98 % R	3996 Observ	
Dtr Calving Ease	4.3	68 % R	0 Observ	0 dtr.
Sire stillbirth	7.7	94 % R	4279 Observ	
Daughter stillbirth	5.6	63 % R	0 Observ	0 dtr.

# AltaMENTO

011H011598

PEAK ALTAMENTO-ET

AHEAD X SHAMROCK

H0840M003125475808 | DOB 7/12/2014

CDCB & HA-USA Genetic Evaluations 08/2019



\$18 +gst

TPI 2437  
NM\$ 604

- ▲ Calving Ease
- ▲ Balanced linear
- ▲ High PL & extreme DPR
- ▲ A2A2

PRODUCTION (111 dtrs / 20 herds)				HEALTH			
Milk	551 Lbs	93%R	PL	6.0	DPR	4.4	
Protein	33 Lbs	+0.06%	LIV	2.2	CCR	4.7	
Fat	51 Lbs	+0.11%	SCS	2.84	HCR	2.8	

CONFORMATION (38 dtrs / 7 herds)			
PTAT	1.31	UDC	1.16
FLC	1.46	Rel	85%

	-2	-1	0	1	2	
Stature						+0.41 Tail
Strength						+0.40 Strong
Body Depth						+0.26 Deep
Dairy form						+0.51 Open
Rump Angle						+0.22 Sloped
Thurl Width						+0.54 Wide
R. Legs-S View						0.00 Posty
R. Legs-R View						+1.39 Straight
Foot Angle						+0.70 Steep
F&L Score						+1.50 High
F. Udder Att.						+1.21 Strong
R. Udder Ht.						+1.56 High
R. Udder Wid.						+1.44 Wide
Udder Cleft						+0.96 Strong
Udder Depth						+0.72 Shallow
F. Teat Place						+1.54 Close
R. Teat Place						+1.25 Close
Teat Length						-0.86 Short

CALVING TRAITS				
Sire Calving Ease	5.7	94 % R	735 Observ	
Dtr Calving Ease	5.2	71 % R	47 Observ	47 dtr.
Sire stillbirth	8.7	86 % R	673 Observ	
Daughter stillbirth	7.4	67 % R	47 Observ	47 dtr.

# AltaSABRE

011H011531

BOMAZ ALTASABRE-ET

JACEY X ROBUST

HOUSAM000072615076 | DOB 12/28/2013

CDCB & HA-USA Genetic Evaluations 08/2019



\$24 +gst

TPI 2490  
NM\$ 596

- ▲ A2A2
- ▲ Improves dairy strength
- ▲ Extreme health trait profile including 2.46 SCS

## PRODUCTION (1135 dtrs / 177 herds) HEALTH

Milk	973	Lbs	98%R	PL	7.3	DPR	3.3
Protein	53	Lbs	+0.08%	LIV	3.0	CCR	4.5
Fat	22	Lbs	-0.05%	SCS	2.46	HCR	4.2

## CONFORMATION (233 dtrs / 55 herds)

PTAT	1.79	UDC	1.09
FLC	1.15	Rel	95%

	-2	-1	0	1	2	
Stature						+1.07 Tail
Strength						+1.40 Strong
Body Depth						+1.14 Deep
Dairy form						+1.24 Open
Rump Angle						-1.21 High Pins
Thurl Width						+2.10 Wide
R. Legs-S View						+0.03 Sickle
R. Legs-R View						+1.01 Straight
Foot Angle						+0.98 Steep
F&L Score						+1.36 High
F. Udder Att.						+1.27 Strong
R. Udder Ht.						+1.57 High
R. Udder Wid.						+1.44 Wide
Udder Cleft						+0.98 Strong
Udder Depth						+1.14 Shallow
F. Teat Place						+0.69 Close
R. Teat Place						+0.44 Close
Teat Length						-0.27 Short

## CALVING TRAITS

Sire Calving Ease	7.3	99 % R	4661 Observ	
Dtr Calving Ease	5.5	91 % R	678 Observ	692 dtr.
Sire stillbirth	7.3	96 % R	4866 Observ	
Daughter stillbirth	7.6	93 % R	706 Observ	773 dtr.

# AltaTIGRE

011H012281

PEAK ALTATIGRE-ET

CHARLEY X DELTA

H0840M003145229971 | DOB 6/28/2017

CDCB & HA-USA Genetic Evaluations 08/2019



NEW

\$24 +gst

TPI 2642  
NM\$ 806

- ▲ High CFP
- ▲ Health profile at its best, 8.7 PL
- ▲ SCS improver
- ▲ A2A2 CONCEPT PLUS sire

## PRODUCTION (0 dtrs / 0 herds) HEALTH

Milk	999	Lbs	79%R	PL	8.7	DPR	2.8
Protein	50	Lbs	+0.07%	LIV	3.8	CCR	4.0
Fat	51	Lbs	+0.05%	SCS	2.58	HCR	1.9

## CONFORMATION (0 dtrs / 0 herds)

PTAT	1.52	UDC	2.21
FLC	0.86	Rel	77%

	-2	-1	0	1	2	
Stature						+1.34 Tail
Strength						+0.44 Strong
Body Depth						+0.09 Deep
Dairy form						+0.30 Open
Rump Angle						+0.83 Sloped
Thurl Width						+0.40 Wide
R. Legs-S View						-0.89 Posty
R. Legs-R View						+0.73 Straight
Foot Angle						+1.47 Steep
F&L Score						+1.08 High
F. Udder Att.						+2.90 Strong
R. Udder Ht.						+2.82 High
R. Udder Wid.						+2.59 Wide
Udder Cleft						+1.21 Strong
Udder Depth						+2.57 Shallow
F. Teat Place						+1.43 Close
R. Teat Place						+1.35 Close
Teat Length						-1.99 Short

## CALVING TRAITS

Sire Calving Ease	6.2	70 % R	8 Observ	
Dtr Calving Ease	2.9	68 % R	0 Observ	0 dtr.
Sire stillbirth	6.6	63 % R	8 Observ	
Daughter stillbirth	3.4	63 % R	0 Observ	0 dtr.



# AltaCUCHILLO 011H012188

MATCREST ALTACUCHILLO-ET

BANDARES X DELTA

H0840M003140239377 | DOB 3/3/2017

CDCB & HA-USA Genetic Evaluations 08/2019



**NEW**

\$18 +gst

TPI	2549
NM\$	727

- ▲ Great Udder profile
- ▲ Fertility Sire
- ▲ Outcross pedigree
- ▲ A2A2 CONCEPT PLUS

PRODUCTION (0 dtrs / 0 herds)				HEALTH			
Milk	756	Lbs	79%R	PL	6.5	DPR	1.0
Protein	44	Lbs	+0.08%	LIV	2.7	CCR	1.8
Fat	65	Lbs	+0.13%	SCS	2.66	HCR	3.1

CONFORMATION (0 dtrs / 0 herds)			
PTAT	1.57	UDC	2.09
FLC	0.97	Rel	77%

	-2	-1	0	1	2	
Stature						+1.17 Tail
Strength						+0.90 Strong
Body Depth						+0.42 Deep
Dairy form						+0.21 Open
Rump Angle						+0.27 Sloped
Thurl Width						+1.55 Wide
R. Legs-S View						-0.18 Posty
R. Legs-R View						+1.20 Straight
Foot Angle						+1.06 Steep
F&L Score						+1.08 High
F. Udder Att.						+2.27 Strong
R. Udder Ht.						+2.81 High
R. Udder Wid.						+2.59 Wide
Udder Cleft						+1.29 Strong
Udder Depth						+1.87 Shallow
F. Teat Place						+1.67 Close
R. Teat Place						+1.71 Close
Teat Length						-0.43 Short

CALVING TRAITS				
Sire Calving Ease	8.4	75 % R	85 Observ	
Dtr Calving Ease	3.9	68 % R	0 Observ	0 dtr.
Sire stillbirth	7.2	64 % R	66 Observ	
Daughter stillbirth	3.3	63 % R	0 Observ	0 dtr.

# AltaWORMONT 011H011666

MELARRY ALTAWORMONT-ET

SUPERSHOT X SHAN

H0840M003128713944 | DOB 2/3/2015

CDCB & HA-USA Genetic Evaluations 08/2019



**NEW**

\$18 +gst | \$45 sexed + gst

TPI	2437
NM\$	700

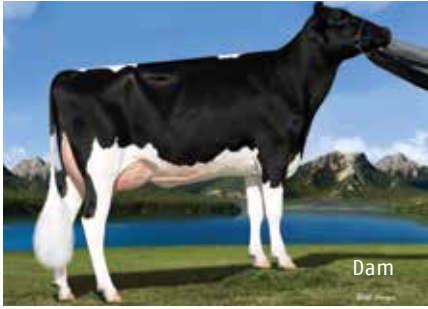
- ▲ Moderate frames with a "no holes" linear
- ▲ Exceptional Health and Fertility
- ▲ High component production BPI 296

PRODUCTION (155 dtrs / 23 herds)				HEALTH			
Milk	841	Lbs	94%R	PL	6.8	DPR	1.5
Protein	39	Lbs	+0.05%	LIV	3.1	CCR	1.5
Fat	58	Lbs	+0.10%	SCS	2.60	HCR	0.3

CONFORMATION (29 dtrs / 8 herds)			
PTAT	0.79	UDC	1.14
FLC	1.29	Rel	86%

	-2	-1	0	1	2	
Stature						+0.03 Tail
Strength						+0.27 Strong
Body Depth						-0.52 Shallow
Dairy form						-0.67 Tight
Rump Angle						+1.35 Sloped
Thurl Width						-0.86 Narrow
R. Legs-S View						-0.43 Posty
R. Legs-R View						+1.33 Straight
Foot Angle						+0.70 Steep
F&L Score						+1.18 High
F. Udder Att.						+0.95 Strong
R. Udder Ht.						+1.33 High
R. Udder Wid.						+1.22 Wide
Udder Cleft						+1.43 Strong
Udder Depth						+0.79 Shallow
F. Teat Place						+0.75 Close
R. Teat Place						+1.20 Close
Teat Length						+0.47 Long

CALVING TRAITS				
Sire Calving Ease	4.9	98 % R	2171 Observ	
Dtr Calving Ease	3.2	73 % R	76 Observ	76 dtr.
Sire stillbirth	5.7	94 % R	2098 Observ	
Daughter stillbirth	4.4	75 % R	86 Observ	86 dtr.



## AltaKERMIT

\$14 +gst

PEAK AltaKERMIT-ET

Kingboy x Supersire x Shottle

NASIS Code:011H011672 | Herdbook: 840M003126668077



TPI 2403 | NM\$ 543 | Type 2.23 | UDC 1.96 | FLC 0.87 | **PL +4.9** | **DPR +2.2**  
M 861 lbs | P 22 lbs -.02% | F 47 lbs +.05% | Calving Ease 6.8% 3707 Obs



## AltaSTEEL

\$14 +gst

PEAK AltaSTEEL-ET

Silver x Supersire x Shottle

NASIS Code:011H011724 | Herdbook: 840M003128365037



TPI 2439 | NM\$ 658 | Type 1.48 | UDC 2.23 | FLC 1.47 | **PL +7.0** | **DPR +1.7**  
M 479 lbs | P 22 lbs +.03% | F 55 lbs +.14% | Calving Ease 5.8% 3246 Obs



## AltaSNAPSHOT **NEW**

\$14 +gst

Melarry AltaSNAPSHOT-ET

Supershot x Shan x Snowman

NASIS Code:011H011745 | Herdbook: 840M003128713969



TPI 2424 | NM\$ 613 | Type 1.49 | UDC 1.60 | FLC 0.77 | **PL +5.2** | **DPR +0.2**  
M 2165 lbs | P 66 lbs +.00% | F 39 lbs -.14% | Calving Ease 5.9% 2008 Obs



## AltaCLAIM

\$14 +gst

Butlerview AltaCLAIM-ET

Supershot x Halogen x Mogul

NASIS Code:011H011863 | Herdbook: 840M003128365037



TPI 2503 | NM\$ 678 | Type 1.50 | UDC 1.33 | FLC 0.53 | **PL +5.5** | **DPR +2.6**  
M 1357 lbs | P 53 lbs +.04% | F 57 lbs +.02% | Calving Ease 6.8% 415 Obs



## AltaMIKLO

\$14 +gst | \$35 sexed + gst

No-Fla AltaMIKLO-ET

Supershot x Mayflower x AltaGREATEST

NASIS Code:011H012026 | Herdbook: 840M003133887401



TPI 2429 | NM\$ 721 | Type 0.33 | UDC 0.45 | FLC 0.26 | **PL +6.7** | **DPR +2.2**  
M 1856 lbs | P 62 lbs +.02% | F 49 lbs -.07% | Calving Ease 3.8% 1685 Obs



## AltaMODER8

\$14 +gst

Pine-Tree AltaMODER8-ET

Modesty x Supersire x Robust

NASIS Code:011H012029 | Herdbook: 840M003132117161



TPI 2439 | NM\$ 691 | Type 1.70 | UDC 1.23 | FLC 0.72 | **PL +5.1** | **DPR +0.6**  
M 918 lbs | P 40 lbs +.04% | F 79 lbs +.16% | Calving Ease 7.3% 1111 Obs





## AltaMEGLO

MR Bomaz AltaMEGLO-ET

Supersire x Freddie x Planet

NASIS Code:011H011499 | Herdbook: USAM000072615015



\$18 +gst | \$55 sexed + gst

TPI 2532 | NM\$ 780 | Type 0.59 | UDC 0.90 | FLC 1.03 | **PL +5.5** | **DPR +2.8**  
M 2008 lbs | P 63 lbs +.01% | F 72 lbs -.01% | Calving Ease 4.9% 10571 Obs



## AltaNIXER

PEAK AltaNIXER-ET

Yoder x Supersire x Man-0-Man

NASIS Code:011H011758 | Herdbook: 840M003125434762



\$18 +gst | \$50 sexed + gst

TPI 2415 | NM\$ 712 | Type 0.20 | UDC 0.94 | FLC -0.43 | **PL +5.6** | **DPR +1.9**  
M 984 lbs | P 46 lbs +.06% | F 62 lbs +.09% | Calving Ease 5.3% 9524 Obs



## AltaMELVIN

Melarry AltaMELVIN-ET

Jedi x Balisto x Mogul

NASIS Code:011H011939 | Herdbook: 840M003133743259



\$18 +gst | \$50 sexed + gst

TPI 2429 | NM\$ 618 | Type 1.08 | UDC 1.28 | FLC 0.10 | **PL +5.4** | **DPR +0.9**  
M 2130 lbs | P 80 lbs +.05% | F 33 lbs -.16% | Calving Ease 5.4% 1562 Obs



## AltaOSCAR

PEAK AltaOSCAR-ET

AltaKERMIT x Yoder x Lexor

NASIS Code:011H012060 | Herdbook: 840M003138498720



\$18 + gst

TPI 2554 | NM\$ 667 | Type 2.22 | UDC 2.10 | FLC 1.89 | **PL +5.8** | **DPR +3.4**  
M 1421 lbs | P 34 lbs -.03% | F 45 lbs -.03% | Calving Ease 6.1% 482 Obs



## AltaOVID **NEW**

PEAK AltaOVID-ET

Superhero x Yoder x Lexor

NASIS Code:011H012127 | Herdbook: 840M003139851911



\$18 + gst

TPI 2584 | NM\$ 772 | Type 2.05 | UDC 1.69 | FLC 0.82 | **PL +6.2** | **DPR +1.5**  
M 1426 lbs | P 54 lbs +.04% | F 68 lbs +.05% | Calving Ease 5.2% 135 Obs



## AltaSEVERINO **NEW**

PEAK AltaSEVERINO-ET

AltaAMULET x Megasire x Sterling

NASIS Code:011H012177 | Herdbook: 840M003138499064



\$18 +gst | \$50 sexed +gst

TPI 2602 | NM\$ 766 | Type 2.11 | UDC 2.46 | FLC 1.28 | **PL +5.2** | **DPR +0.2**  
M 1568 lbs | P 65 lbs +.06% | F 72 lbs +.05% | Calving Ease 6.6% 161 Obs

# CREATE MORE PREGNANCIES

## through precision fertility management

Sexed semen fertility is not the same as conventional semen fertility. Data also shows that any given bull may perform well as conventional semen, but not as sexed, and vice versa.

So to help you manage your herd's genetics and fertility with precision, you now have access to two separate sire fertility evaluations.



The innovative, **NEW 511 CONCEPT PLUS** designation tells you which bulls offer the best fertility on **Alta511 SEXED SEMEN**.



The industry's most accurate sire fertility evaluation for nearly 20 years, **CONCEPT PLUS** tells you which sires create more pregnancies with **CONVENTIONAL** semen.

### Alta 511 SexedULTRA sires

NAAB Code	Full Name	TPI	NM\$	Milk	P	F	PTAT	UDC	FLC	PL	DPR	CCR	HCR	SCS	SCE	SSB	511 CP	A2A2
011H012286	SCHOENE-KUH <b>AltaROBERT</b> -ET	2822	975	634	48	88	1.31	1.56	1.55	8.7	4.1	5.5	5.4	2.67	6.2	6.0		✓
011H012157	PEAK <b>AltaLAWSON</b> -ET	2801	987	476	56	105	1.38	1.60	0.79	7.6	2.2	3.8	4.1	2.77	7.0	6.4		✓
011H011779	BOMAZ <b>AltaTOPSHOT</b> -ET	2754	987	2128	79	99	0.82	0.92	0.08	7.4	1.3	1.8	0.9	2.65	5.9	5.8		✓
011H012206	NO-FLA <b>AltaRONDON</b> -ET	2730	943	2125	72	94	1.74	2.09	0.75	7.2	-0.5	0.4	1.5	2.76	5.6	6.8		
011H011778	BOMAZ <b>AltaROBSON</b> -ET	2713	901	601	55	93	1.36	1.05	1.03	7.0	2.2	3.2	5.3	2.78	6.0	5.6		✓
011H012168	PEAK <b>AltaGILMORE</b> -ET	2702	983	1902	75	110	0.54	0.81	0.12	5.9	0.2	1.3	0.9	2.77	5.5	5.7	✓	✓
011H012316	PEAK <b>AltaORINOCO</b> -ET	2691	861	1582	71	89	1.85	1.60	1.41	5.8	0.5	2.0	2.3	2.92	6.7	6.6		✓
011H012336	PEAK <b>AltaLEAP</b> -ET	2683	853	1240	63	66	1.56	2.53	0.74	6.6	0.8	1.8	0.5	2.56	7.0	6.9		✓
011H011736	PEAK <b>AltaRECOIL</b> -ET	2670	763	1513	61	53	1.82	2.43	1.67	6.0	3.2	4.6	3.9	2.84	6.2	7.7		✓
011H012263	PEAK <b>AltaPINETTA</b> -ET	2670	932	1601	65	132	1.30	1.35	0.11	4.5	-0.8	-1.1	-0.6	2.85	6.1	7.0		✓
011H012161	PEAK <b>AltaAROLDIS</b> -ET	2642	890	644	49	85	1.01	1.55	0.81	7.3	0.8	1.2	4.1	2.66	5.8	5.9		✓
011H011523	BRYHILL <b>AltaHOTSHOT</b> -ET	2603	871	1520	46	95	1.17	1.76	0.85	7.1	1.5	1.6	1.4	2.88	5.5	5.4		
011H012177	PEAK <b>AltaSEVERINO</b> -ET	2602	766	1568	65	72	2.11	2.46	1.28	5.2	0.2	0.8	1.1	3.02	6.6	7.2	✓	✓
011H011499	MR BOMAZ <b>AltaMEGLO</b> -ET	2532	780	2008	63	72	0.59	0.90	1.03	5.5	2.8	3.9	2.4	3.15	4.9	5.2		✓
011H011963	OCD <b>AltaSWAG</b> -ET	2471	727	1051	47	91	1.52	1.43	1.17	3.8	-0.1	-0.8	1.2	3.06	6.2	6.3	✓	
011H011841	PEAK <b>AltaGHILLIE</b> -ET	2450	731	1317	49	68	0.86	1.14	0.40	5.5	0.3	1.1	1.2	2.65	4.9	6.0		
011H011939	MELARRY <b>AltaMELVIN</b> -ET	2429	618	2130	80	33	1.08	1.28	0.10	5.4	0.9	1.7	1.4	2.95	5.4	7.3	✓	✓
011H012026	NO-FLA <b>AltaMIKLO</b> -ET	2429	721	1856	62	49	0.33	0.45	0.26	6.7	2.2	2.3	-0.3	2.81	3.8	6.2		✓
011H011758	PEAK <b>AltaNIXER</b> -ET	2415	712	984	46	62	0.20	0.94	-0.43	5.6	1.9	4.5	-0.5	2.72	5.3	7.2	✓	✓
011H011764	PEAK <b>AltaKAMEO</b> -ET	2405	636	1725	63	61	0.97	1.11	0.92	3.9	0.6	0.8	-0.3	2.94	6.0	6.9		
011H012220	KOEPON <b>AltaTHOR PP</b>	2392	624	1126	56	54	1.09	1.58	1.11	4.0	0.8	0.4	1.1	3.06	7.2	6.8		✓
011H012098	KOEPON <b>AltaREX PP</b> -ET	2360	599	1230	41	58	1.57	1.90	0.46	4.7	0.8	1.0	2.3	3.05	7.0	6.6		✓
011JE01179	CDF <b>VICEROY</b> -ET	185	625	1390	56	70	0.90	8.95	-0.20	5.5	1.7	3.3	4.7	3.10				✓
011JE01259	CDF IRWIN <b>STEVE</b>	181	650	742	45	107	1.40	13.91	0.01	3.6	-1.6	-0.6	1.6	3.06				✓
011JE01348	JX FARIA BROTHERS <b>AltaZIZIC {4}</b>	158	519	1267	54	75	1.00	9.87	0.11	2.4	-2.1	-2.6	1.3	2.78			✓	✓
011JE01358	JX FARIA BROTHERS <b>AltaPIPELINE {3}</b>	141	461	1180	44	55	0.90	8.20	-0.04	4.2	-0.6	-0.7	2.3	2.83				✓
011JE01327	JX STEINHAUERS <b>AltaRAZZLES {3}</b> -ET	110	355	682	32	38	2.00	18.67	1.41	3.2	0.2	0.1	0.1	3.05			✓	✓



# POLLED SIRES



## AltaLUX PP-RED

Simple-Dreams Lux PP-Red

Lucky PP-Red x Montross x Effect P-Red

NASIS Code:011H000589 | Herdbook: 840M003145456256



\$20 +gst

TPI 2322 | NM\$ 610 | Type 0.68 | UDC 1.46 | FLC 0.72  
M 1349 lbs | P 43 lbs +.01% | F 40 lbs -.04%  
PL +6.3 | DPR +0.6 | Calving Ease 5.9% 0 Obs



## AltaARIC PP

Koepon AltaARIC PP-ET

AltaCASUAL P x Ohio Style P x Mixer

NASIS Code:011H012039 | Herdbook: NLDM000734691514



\$18 +gst

TPI 2218 | NM\$ 574 | Type 0.56 | UDC 1.52 | FLC 0.32  
M 1154 lbs | P 38 lbs +.01% | F 53 lbs +.04%  
PL +4.5 | DPR -0.5 | Calving Ease 4.8% 10 Obs



## AltaREX PP

Koepon AltaREX PP-ET

Answer Po x Powerball-P x AltaOAK

NASIS Code:011H012098 | Herdbook: NLDM000685696167



\$20 +gst

TPI 2360 | NM\$ 599 | Type 1.57 | UDC 1.90 | FLC 0.46  
M 1230 lbs | P 41 lbs +.01% | F 58 lbs +.04%  
PL +4.7 | DPR +0.8 | Calving Ease 7.0% 17 Obs



## AltaTHOR PP

Koepon AltaTHOR PP

Answer Po x Ohio Style P x Mixer

NASIS Code:011H012220 | Herdbook: NLDM000586898277



\$20 +gst

TPI 2392 | NM\$ 624 | Type 1.09 | UDC 1.58 | FLC 1.11  
M 1126 lbs | P 56 lbs +.08% | F 54 lbs +.04%  
PL +4.0 | DPR +0.8 | Calving Ease 7.2% 0 Obs

# Alta Jersey Sires



## AltaLEMOR {3}

JX Rowleys AltaLEMOR {3}-ET

JX Avon {2} x Pharoah x Hendrix

NASIS Code:011JE01330 | Herdbook: USAM000067792215



JPI 124 | CM\$ 389 | Type 1.6 | JUI 19.81 | PL +5.3 | DPR +1.4  
M 1114 lbs | P 30 lbs -.05% | F 25 lbs -.13%

\$18+gst



## AltaZIZIC {4}

JX Faria Brothers AltaZIZIC {4}

Ronaldo {3} x Magnum x Dominican

NASIS Code:011JE01348 | Herdbook: 840M003140371297



JPI 158 | CM\$ 550 | Type 1.0 | JUI 9.87 | PL +2.4 | DPR -2.1  
M 1267 lbs | P 54 lbs +.04% | F 75 lbs +.07%

\$24 +gst



## AltaMONTRA {6}

JX PEAK AltaMONTRA {6}-ET

Viceroy x Harris x Dimension

NASIS Code:011JE01369 | Herdbook: 840M003140986383



JPI 195 | CM\$ 670 | Type 1.7 | JUI 19.59 | PL +4.7 | DPR -1.1  
M 1342 lbs | P 62 lbs +.07% | F 80 lbs +.08%

\$32 +gst



## AltaZIDANE {4} **NEW**

JX Faria Brothers AltaZIDANE {4}-ET

World Cup {4} x JX Marlo {2} x Harris

NASIS Code:011JE01379 | Herdbook: 840M003149514358



JPI 179 | CM\$ 615 | Type 1.3 | JUI 14.95 | PL +5.6 | DPR +0.8  
M 855 lbs | P 46 lbs +.07% | F 63 lbs +.11%

\$24 +gst



## AltaKROOS {4} **NEW**

JX Faria Brothers AltaKROOS {4}-ET

Future {3} x Eusebio {4} x Magnum

NASIS Code:011JE01392 | Herdbook: 840M003149514425



JPI 146 | CM\$ 519 | Type 1.9 | JUI 21.57 | PL +4.5 | DPR -2.5  
M 899 lbs | P 37 lbs +.02% | F 69 lbs +.13%

\$18 +gst



# VICEROY

011JE01179

CDF VICEROY-ET

DOMINICAN X Q IMPULS

JE840M003002447507 | DOB 6/20/2012

CDCB & AJCA Genetic Evaluations 08/2019



\$32 +gst | \$60 sexed +gst

JPI 185  
CM\$ 646

- ▲ High ranking daughter proven
- ▲ Components and Health
- ▲ Sire of sons

## PRODUCTION (2354 dtrs / 100 herds) HEALTH

Milk	1390	Lbs	99%R	PL	5.5	DPR	1.7
Protein	56	Lbs	+0.03%	LIV	1.0	CCR	3.3
Fat	70	Lbs	+0.02%	SCS	3.10	HCR	4.7

## CONFORMATION (1216 dtrs / 42 herds)

PTAT	0.9	JUI	8.95
Rel	99%		

	-2	-1	0	1	2	
Stature						+0.9 Tail
Strength						+1.0 Strong
Dairy form						+0.4 Open
Rump Angle						+0.6 Sloped
Thurl Width						+1.3 Wide
R. Legs-S View						+0.8 Sickle
Foot Angle						+0.1 Steep
F. Udder Att.						+1.7 Strong
R. Udder Ht.						+0.8 High
R. Udder Wid.						+0.3 Wide
Udder Cleft						-0.3 Weak
Udder Depth						+0.8 Shallow
F. Teat Place						+0.3 Close
RTP - Side View						-0.4 Wide
RTP - Rear View						+0.5 Close
Teat Length						+0.5 Long



Avi-Lance Viceroy Jackpot 16137 {6}



D&E Viceroy Sunshine 13484 -ET (2<sup>nd</sup> Lact)

# STEVE

011JE01259

CDF IRWIN STEVE

IRWIN X DOMINICAN

JE840M003006436334 | DOB 8/25/2014

CDCB & HA-USA Genetic Evaluations 08/2019



\$30 +gst | \$ sexed +gst

JPI 181  
CM\$ 686

- ▲ Breed leader for CFP
- ▲ High Fat
- ▲ 1.4 Type and Stature
- ▲ CONCEPT PLUS A2A2

## PRODUCTION (918 dtrs / 58 herds) HEALTH

Milk	742	Lbs	99%R	PL	3.6	DPR	-1.6
Protein	45	Lbs	+0.09%	LIV	-0.3	CCR	-0.6
Fat	107	Lbs	+0.35%	SCS	3.06	HCR	1.6

## CONFORMATION (477 dtrs / 34 herds)

PTAT	1.4	JUI	13.91
Rel	98%		

	-2	-1	0	1	2	
Stature						+1.4 Tail
Strength						+0.3 Strong
Dairy form						+0.8 Open
Rump Angle						+1.0 Sloped
Thurl Width						+0.1 Wide
R. Legs-S View						+0.5 Sickle
Foot Angle						0.0 Low
F. Udder Att.						+0.9 Strong
R. Udder Ht.						+1.1 High
R. Udder Wid.						+0.6 Wide
Udder Cleft						+0.4 Strong
Udder Depth						+1.2 Shallow
F. Teat Place						+0.8 Close
RTP - Side View						-0.2 Wide
RTP - Rear View						+1.0 Close
Teat Length						-0.3 Short



Ahlem Steve Loreli 50088



Ahlem Steve Pumpkin 50185

# Alta Australia Pty.

## Head Office Melbourne

03 8336 1458

Email: [info.au@altagenetics.com](mailto:info.au@altagenetics.com)

## Australia Sales Representatives

### Tony Simpson

North VIC/NSW/WA

0427 341 458

[tony.simpson@altagenetics.com](mailto:tony.simpson@altagenetics.com)

### Brett Hazelman

North VIC

0459 600 658

[brett.hazelman@altagenetics.com](mailto:brett.hazelman@altagenetics.com)

### Jake Harkness

Western VIC/SA/Tablelands

0448 634 533

[jake.harkness@altagenetics.com](mailto:jake.harkness@altagenetics.com)

### Peter Clifford

Western VIC/SA

0428 416 444

[peter.clifford@altagenetics.com](mailto:peter.clifford@altagenetics.com)

### Chris Hoffmann

Western VIC

0448 304 465

[chris.hoffmann@altagenetics.com](mailto:chris.hoffmann@altagenetics.com)

### Gary Jones

Gippsland

0438 830 865

[Gary.jones@altagenetics.com](mailto:Gary.jones@altagenetics.com)

### Kahli Higgins

Gippsland

0427 544 758

[kahli.higgins@altagenetics.com](mailto:kahli.higgins@altagenetics.com)

### Stuart Bright

Tasmania

0438 777 411

[stuart.bright@altagenetics.com](mailto:stuart.bright@altagenetics.com)

### Giles Gay

QLD/North NSW

0429 839 292



[/AltaGeneticsAustralia](https://www.facebook.com/AltaGeneticsAustralia)

[australia.altagenetics.com](http://australia.altagenetics.com)

## Office Staff

### Julian Pick; Sales Support

0428 529 275

[julian.pick@altagenetics.com](mailto:julian.pick@altagenetics.com)

### Jayde Lee; Marketing & Operations

0419 677 209

[jayde.lee@altagenetics.com](mailto:jayde.lee@altagenetics.com)

## General Manager

### Geoff Watts

0458 604 102

[geoffrey.watts@altagenetics.com](mailto:geoffrey.watts@altagenetics.com)

