

2019 AUSTRALIAN

DAIRY

SPRING UPDATE



Profit From Genetic Progress

15 SCHOLAR DRIVE
BUNDOORA, VIC 3083
PH: 1800 ABS BULL (1800 227 285)
abs.au.info@genusplc.com

PERSUADE



NASIS: 45FFR22 29H017458 BOGHILL GLAMOUR PERSUADE-ET

#1
Genomic

BOGHILL GLAMOUR PERSUADE-ET

ABS Real World Data® - August 2019									
TransitionRight® ★★★★★									
Bull Fertility Obsv									
USDA PTA 08/19									
TPI	+2654		NM\$	851		G Dtrs	G Hrds		
Milk lbs	1314	76%R	SCC	2.61	74%R	PL	+7.9	73%R	
Fat lbs	67	0.06%	CE	5.7	62%R	GL	-1.7	71%R	
Prot lbs	63	0.08%	DPR	+2.6	72%R				
ABVg PRODUCTION 08/19									
BPI	404	65% Rel.	ASI	174	77% Rel.				
HWI	354	58% Rel.	Overall Type	98	Dtrs				
TWI	345	63% Rel.	Mammary	103	Hrds				
Milk ltrs	+526		Calv. Ease	104	41% Rel.				
Prot kg	+27	0.23%	Dtr Fertility	116	49% Rel.				
Fat kg	+24	0.02%	Cell Count	180	67% Rel.				
Milking Speed	102	Temperament	103	Likeability	105	60% Rel.			
US 08/19									
		G Dtrs	G Hrds					74% Rel.	
Type		-2	-1	0	1	2			1.19
Mammary									1.50
Legs & Feet									0.04
Stature	Short								0.26
Strength	Frail								0.36
Body Depth	Shallow								-0.12
Angularity	Tight								0.52
Rump Angle	High								0.20
Thurl Width	Narrow								0.71
Rear Legs-Side Set	Straight								0.70
Rear Legs-Rear View	Curved								-0.66
Foot Angle	Low								0.71
Foot & Leg Score	Low								0.21
Fore Udder Attach.	Weak								1.67
Rear Udder Height	Low								1.96
Rear Udder Width	Narrow								1.80
Udder Cleft	Weak								1.17
Udder Depth	Deep								0.86
Front Teat Place.	Wide								0.42
Rear Teat Place.	Wide								0.72
Teat Length	Short								0.07



[above] 4TH DAM:
LARCREST COMET VG-87



[right] 5TH DAM:
LARCREST COSMOPOLITAN VG-87

SIRE: WESTCOAST PERSEUS-ET
DAM: BOGHILL GLAMOUR SUPERSHOT CARL
MGD: GLAMOUR CARLIN VG-88

Perseus x Supershot x Numero Uno

- ◆ #1 BPI at \$404
- ◆ Elite health traits

- ◆ Adds teat length
- ◆ Positive feed saved





DTR: PURNIM MVP BIOSMA. OWNED BY PURNIM HOLSTEINS, PURNIM, VIC

ABS Real World Data® - August 2019				
TransitionRight®		★★		
Bull Fertility		★★★	55706 Obsv	
ABVg PRODUCTION 08/19		1366 Dtrs		177 Hrds
BPI	281	92% Rel.	ASI	194 99% Rel.
HWI	199	84% Rel.	Overall Type	109 253 Dtrs
TWI	304	92% Rel.	Mammary	110 56 Hrds
Milk ltrs	+347		Calv. Ease	103 99% Rel.
Prot kg	+23	0.27%	Dtr Fertility	102 93% Rel.
Fat kg	+38	0.33%	Cell Count	122 97% Rel.
Milking Speed		103	Temperament	105
			Likeability	107 97% Rel.
HA 09/19		253 Dtrs	56 Hrds	95% Rel.
		90	95	100
Overall Type				109
Mammary System				110



[left]
DTR: SEAGULL-BAY
MVP 532-ET GP-82

[below]
DTR: RELOUGH MVP
AMY VG-88

- ♦ Elite proven sire reliability ~ 1366 daughters in 177 herd testing herds
- ♦ Now available Sexel™
- ♦ Exceptional cow family
- ♦ Medium sized cows with body & strength
- ♦ Excellent udders and elite farmer Likeability 107



Stature	Angularity	Body Depth	Chest Width	Pin Width	Pin Set	Foot Angle	Rear Set	Rear Leg Rear View	Udder Depth	Fore Attachment	Rear Attach Height	Rear Attach Width	Centre Ligament	Front Teat Placement	Rear Teat Placement	Teat Length
100	107	104	106	96	98	100	95	110	104	103	109	109	100	110	102	93

JERONIMO P

NASIS: 80FFPA4 29H018698 ABS JERONIMO-P-ET

SIRE: ENDCO SUPERHERO-ET
DAM: ABS 7726 JAZLYN-P-ET
MGD: RICHMOND-FD TANGO JULY-ET

Superhero x Powerball P x Tango



Sexcel
Sexed Genetics

Beth Hergen

DAM: ABS 7726 JAZLYN P-ET

ABS Real World Data® - August 2019

TransitionRight® ★★★★★

Bull Fertility ★★★

3021 Obsv

USDA PTA 08/19

TPI	+2626		NMS	801	G Dtrs	G Hds
Milk lbs	395	80%R	SCC	2.60	77%R	PL +6.5 74%R
Fat lbs	84	0.25%	CE	7.6	69%R	GL -1.8 74%R
Prot lbs	40	0.10%	DPR	+2.3	73%R	

ABVg PRODUCTION 08/19

BPI	(381)	65% Rel.	ASI	182	77% Rel.
HWI	331	58% Rel.	Overall Type	102	Dtrs
TWI	356	64% Rel.	Mammary	103	Hrds
Milk ltrs	+329		Calv. Ease	100	41% Rel.
Prot kg	+22	0.25%	Dtr Fertility	(112)	49% Rel.
Fat kg	+35	0.31%	Cell Count	(163)	69% Rel.

Milking Speed 102 Temperament 102 Likeability 104 59% Rel.

US 08/19 G Dtrs G Hds 77% Rel.

	-2	-1	0	1	2	
Type						1.85
Mammary						1.81
Legs & Feet						0.33
Stature	Short					1.75 Tall
Strength	Frail					-0.03 Strong
Body Depth	Shallow					0.03 Deep
Angularity	Tight					1.51 Open
Rump Angle	High					1.69 Sloped
Thurl Width	Narrow					1.19 Wide
Rear Legs-Side Set	Straight					0.52 Curved
Rear Legs-Rear View	Curved					-0.12 Straight
Foot Angle	Low					0.36 Steep
Foot & Leg Score	Low					0.89 High
Fore Udder Attach.	Weak					2.57 Strong
Rear Udder Height	Low					2.52 High
Rear Udder Width	Narrow					2.32 Wide
Udder Cleft	Weak					0.54 Strong
Udder Depth	Deep					2.48 Shallow
Front Teat Place.	Wide					0.69 Close
Rear Teat Place.	Wide					0.10 Close
Teat Length	Short					-1.22 Long



- ◆ Elite ABVg & BPI\$ 381
- ◆ Positive milk and components
- ◆ Excellent health traits
- ◆ Heterozygous polled (P) and A2

[above]
4TH DAM: COYNE-FARMS
FREDDI JEVEN-ET VG-87

[right]
ABS JERONIMO-P-ET



TAILOR



NASIS: 80FLL79
29H017706 DE-SU 12128 TAILOR-ET
LA-BRON x Shamrock x Manoman

SIRE: LADYS-MANOR GRAF LA-BRON-ET
DAM: DE-SU 1438-ET VG-89
MGD: CLEAR-ECHO M-O-M 2150-ET VG-87



- ◆ #1 HWI 317 and #1 TWI 364
- ◆ #2 Proven BPI\$ 356 with 48 Aust milking daughters
- ◆ Outstanding udders
- ◆ High daughter fertility



ABS Real World Data® - August 2019
TransitionRight® ★★★★★
Bull Fertility ★★★ 5301 Obsv

USDA PTA 08/19		NM\$		989 Dtrs 207 Hds	
TPI	+2466		605		
Milk lbs	716	98%R	SCC 2.53	97%R	PL +6.6 86%R
Fat lbs	33	0.02%	CE 6.8	98%R	GL +0.7 99%R
Prot lbs	40	0.07%	DPR +3.4	90%R	

ABVg PRODUCTION 08/19		48 Dtrs 12 Hds	
BPI	356	76% Rel.	ASI 130 85% Rel.
HWI	317	69% Rel.	Overall Type 106 15 Dtrs
TWI	364	74% Rel.	Mammary 108 4 Hds
Milk ltrs	+673		Calv. Ease 100 91% Rel.
Prot kg	+25	0.13%	Dtr Fertility 110 75% Rel.
Fat kg	+13	-0.23%	Cell Count 184 82% Rel.
Milking Speed	104	Temperament 100	Likeability 104 72% Rel.

US 08/19 91 Dtrs 42 Hds 93% Rel.

Type	-2	-1	0	1	2	
Mammary						1.60
Legs & Feet						1.92
Stature	Short					0.35
Strength	Frail					1.25
Body Depth	Shallow					0.50
Angularity	Tight					Strong
Rump Angle	High					0.66
Thurl Width	Narrow					Deep
Rear Legs-Side Set	Straight					1.23
Rear Legs-Rear View	Curved					Open
Foot Angle	Low					1.91
Foot & Leg Score	Low					Sloped
Fore Udder Attach.	Weak					1.42
Rear Udder Height	Low					Wide
Rear Udder Width	Narrow					0.44
Udder Cleft	Weak					Curved
Udder Depth	Deep					0.34
Front Teat Place.	Wide					Straight
Rear Teat Place.	Wide					-0.07
Teat Length	Short					Steep

CLINCHER

NASIS: 45FFP19
29H017429 RELOUGH CLINCHER-ET
JANTANA X Supershot x Mogul

SIRE: TAG-LANE JANTANA-ET
DAM: RELOUGH SUPERSHOT CRIMSON-ET VG-87
MGD: BB MOGUL CLEOPATRA-ET VG-87

DAM: RELOUGH SUPERSHOT CRIMSON-ET VG-87



- ◆ Elite health traits
- ◆ Moderate size with dairy strength
- ◆ Positive feed saved sire



Stature	Strength	Body Depth	Angularity	Rump Angle	Thurl Width	RL-Side Set	RL-Rear View	Foot Angle
-0.25	0.18	-0.52	-0.21	0.40	-0.56	-0.41	0.17	0.54
F&L Score	FU Attach	RU Height	RU Width	Udder Cleft	Udder Depth	Front Teat Pl.	Rear Teat Pl.	Teat Length
0.42	1.88	2.67	2.46	0.49	1.12	0.31	0.64	-0.93

ABS Real World Data® - August 2019
TransitionRight® ★★★
Bull Fertility Obsv

USDA PTA 08/19		NM\$		G Dtrs G Hds	
TPI	+2552		788		
Milk lbs	1133	77%R	SCC 2.72	74%R	PL +6.1 73%R
Fat lbs	78	0.13%	CE 7.7	61%R	GL -4.3 70%R
Prot lbs	57	0.08%	DPR +0.4	72%R	

ABVg PRODUCTION 08/19		G Dtrs G Hds	
BPI	369	65% Rel.	ASI 155 77% Rel.
HWI	325	58% Rel.	Overall Type 99 Dtrs
TWI	322	64% Rel.	Mammary 101 Hds
Milk ltrs	+285		Calv. Ease 102 37% Rel.
Prot kg	+20	0.23%	Dtr Fertility 116 50% Rel.
Fat kg	+27	0.21%	Cell Count 171 68% Rel.
Milking Speed	101	Temperament 103	Likeability 104 61% Rel.

US 08/19 G Dtrs G Hds 74% Rel.

Type	-2	-1	0	1	2	
Mammary						0.96
Legs & Feet						1.93



RELOUGH CLINCHER-ET

KENOBI



NASIS: 80FFPB5
29H018708 DE-SU 14222 KENOBI-ET
Jedi x AltaSpring x Supersire

SIRE: S-S-I MONTROSS JEDI-ET
DAM: DE-SU SPRING 5197-ET VG-85
MGD: DE-SU SUPERSIRE 3349-ET VG-86

DAM: DE-SU SPRING 5197-ET VG-85



- ♦ Elite TPI and NM\$
- ♦ Outstanding Udders
- ♦ High daughter fertility



DE-SU 14222 KENOBI-ET

ABS Real World Data® - August 2019

TransitionRight® ★★★★★

Bull Fertility

Obsv

USDA PTAg 08/19

TPI	+2765	NM\$	908	G Dtrs	G Hrds
Milk lbs	1849	80%R	SCC	2.79	78%R
Fat lbs	83	0.05%R	CE	6.3	89%R
Prot lbs	78	0.08%R	DPR	+1.2	76%R

ABVg PRODUCTION 08/19

BPI	303	67% Rel.	ASI	146	78% Rel.
HWI	251	60% Rel.	Overall Type	102	Dtrs
TWI	299	66% Rel.	Mammary	108	Hrds
Milk ltrs	+473		Calv. Ease	104	56% Rel.
Prot kg	+22	0.18%	Dtr Fertility	109	54% Rel.
Fat kg	+22	0.02%	Cell Count	161	69% Rel.

Milking Speed 101 Temperament 102 Likeability 105 63% Rel.

US 08/19 G Dtrs G Hrds 78% Rel.

Type					1.82
Mammary					2.30
Legs & Feet					-0.01
Stature	Short				0.90
Strength	Frail				1.01
Body Depth	Shallow				0.56
Angularity	Tight				0.74
Rump Angle	High				0.42
Thurl Width	Narrow				0.81
Rear Legs-Side Set	Straight				-2.59
Rear Legs-Rear View	Curved				0.02
Foot Angle	Low				1.23
Foot & Leg Score	Low				0.06
Fore Udder Attach.	Weak				2.54
Rear Udder Height	Low				3.12
Rear Udder Width	Narrow				2.87
Udder Cleft	Weak				0.89
Udder Depth	Deep				2.06
Front Teat Place.	Wide				0.58
Rear Teat Place.	Wide				0.31
Teat Length	Short				-0.01

HOWLER

NASIS: 80FFPHF
29H018878 PINE-TREE HOWLER-ET
CHARLEY x Delta x Supersire

SIRE: DG CHARLEY
DAM: SANDY-VALLEY NO LIMIT-ET
MGD: SANDY-VALLEY SS PSYCH-ET

DAM: SANDY-VALLEY NO LIMIT-ET



Kathy DeBruin



- ♦ Extremely high semen fertility
- ♦ High type with outstanding udders
- ♦ Slopes the rumps



3RD DAM: PINE-TREE MONICA PLANETA-ET VG-86

ABS Real World Data® - August 2019

TransitionRight® ★★★★★

Bull Fertility

1389 Obsv

USDA PTAg 08/19

TPI	+2670	NM\$	867	G Dtrs	G Hrds
Milk lbs	1101		SCC	2.58	75%R
Fat lbs	75	0.12%	CE	7.3	62%R
Prot lbs	54	0.07%	DPR	+0.8	73%R

ABVg PRODUCTION 08/19

BPI	293	66% Rel.	ASI	146	77% Rel.
HWI	242	59% Rel.	Overall Type	105	G Dtrs
TWI	309	64% Rel.	Mammary	108	G Hrds
Milk ltrs	+462		Calv. Ease	102	40% Rel.
Prot kg	+20	0.13%	Dtr Fertility	105	53% Rel.
Fat kg	+32	0.17%	Cell Count	167	68% Rel.

Milking Speed 101 Temperament 104 Likeability 106 61% Rel.

US 08/19 G Dtrs G Hrds 76% Rel.

Type					1.68
Mammary					2.36
Legs & Feet					0.59
Stature	Short				0.71
Strength	Frail				0.11
Body Depth	Shallow				0.11
Angularity	Tight				1.26
Rump Angle	High				0.30
Thurl Width	Narrow				1.13
Rear Legs-Side Set	Straight				0.69
Rear Legs-Rear View	Curved				0.38
Foot Angle	Low				0.54
Foot & Leg Score	Low				0.76
Fore Udder Attach.	Weak				2.64
Rear Udder Height	Low				3.19
Rear Udder Width	Narrow				2.93
Udder Cleft	Weak				0.98
Udder Depth	Deep				1.66
Front Teat Place.	Wide				0.90
Rear Teat Place.	Wide				0.99
Teat Length	Short				-0.13

CRIMSON



NASIS: 80FFPAE
29H018693 ABS CRIMSON-ET
SPECTRE x Rubicon x AltaOak

SIRE: DE-SU 13050 SPECTRE-ET
DAM: ENDCO RUBICON CORA-ET GP-83
MGD: PEAK CHARM-ET VG-85

DAM: ENDCO RUBICON CORA-ET GP-83



Sexcel



- ◆ Positive milk with components
- ◆ High Productive Life
- ◆ Outstanding gBPI\$



ABS CRIMSON-ET

ABS Real World Data® - August 2019

TransitionRight® ★★★★★
Bull Fertility ★★★ 1656 Obsv

USDA PTA 08/19					
TPI	+2781	NM\$	1040	G Dtrs	G Hrds
Milk lbs	1636	79%R	SCC	2.69	75%R
Fat lbs	116	0.19%	CE	6.4	85%R
Prot lbs	65	0.05%	DPR	+0.0	72%R

ABVg PRODUCTION 08/19			G Dtrs	G Hrds		
BPI	311	65% Rel.	ASI	161	77% Rel.	
HWI	255	57% Rel.	Overall Type	97	Dtrs	
TWI	270	63% Rel.	Mammary	100	Hrds	
Milk ltrs	+610		Calv. Ease	101	51% Rel.	
Prot kg	+23	0.12%	Dtr Fertility	109	48% Rel.	
Fat kg	+36	0.14%	Cell Count	164	67% Rel.	
Milking Speed	101	Temperament	104	Likeability	106	59% Rel.

US 08/19 G Dtrs G Hrds 75% Rel.

	-2	-1	0	1	2	
Type						1.09
Mammary						0.96
Legs & Feet						0.98
Stature						0.86
Strength						0.47
Body Depth						0.28
Angularity						1.04
Rump Angle						1.12
Thurl Width						0.16
Rear Legs-Side Set						-1.23
Rear Legs-Rear View						1.47
Foot Angle						0.92
Foot & Leg Score						0.95
Fore Udder Attach.						1.07
Rear Udder Height						1.67
Rear Udder Width						1.54
Udder Cleft						0.03
Udder Depth						0.59
Front Teat Place.						0.64
Rear Teat Place.						0.74
Teat Length						0.09

GINETTA

NASIS: 80FFPEU
29H018957 DENOVO 14744 GINETTA-ET
Guarantee x Delta x Supersire

SIRE: WESTCOAST GUARANTEE-ET
DAM: DE-SU DELTA 4900-ET GP-81
MGD: DE-SU SUPERSIRE 3349-ET VG-86

DAM: DE-SU DELTA 4900-ET GP-81



- ◆ Elite gBPI\$
- ◆ Outstanding Daughter Fertility
- ◆ A2 and black



MGD: DE-SU SUPERSIRE 3349-ET VG-86

ABS Real World Data® - August 2019

TransitionRight® ★★★★★
Bull Fertility Obsv

USDA PTA 08/19					
TPI	+2695	NM\$	899	G Dtrs	G Hrds
Milk lbs	1411	77%R	SCC	2.83	74%R
Fat lbs	100	0.17%	CE	7.5	64%R
Prot lbs	64	0.07%	DPR	+1.2	73%R

ABVg PRODUCTION 08/19			G Dtrs	G Hrds		
BPI	332	65% Rel.	ASI	157	77% Rel.	
HWI	278	58% Rel.	Overall Type	100	Dtrs	
TWI	288	64% Rel.	Mammary	100	Hrds	
Milk ltrs	+307		Calv. Ease	101	35% Rel.	
Prot kg	+19	0.20%	Dtr Fertility	115	51% Rel.	
Fat kg	+32	0.28%	Cell Count	155	67% Rel.	
Milking Speed	101	Temperament	102	Likeability	104	61% Rel.

US 08/19 G Dtrs G Hrds 76% Rel.

	-2	-1	0	1	2	
Type						1.67
Mammary						1.35
Legs & Feet						0.54
Stature						1.45
Strength						0.93
Body Depth						1.10
Angularity						1.84
Rump Angle						-0.05
Thurl Width						1.34
Rear Legs-Side Set						0.38
Rear Legs-Rear View						0.38
Foot Angle						0.63
Foot & Leg Score						0.90
Fore Udder Attach.						1.22
Rear Udder Height						2.63
Rear Udder Width						2.42
Udder Cleft						1.04
Udder Depth						0.52
Front Teat Place.						0.50
Rear Teat Place.						0.98
Teat Length						-0.62

SUPERLUCKY



NASIS: 29FFM43
GLOMAR SUPERLUCKY-ET
Supersire x Goldwyn x Roumare

SIRE: SEAGULL-BAY SUPERSIRE-ET
DAM: GLOMAR GOLDWYN LUCKY 4319-ET VG-87
MGD: GLOMAR ROUMARE LUCKY 3883-ET VG-89

L-R: GLOMAR GOLDWYN LUCKY 4319 VG-87 (5yo), GLOMAR LAUDAN LUCKY 3540 VG-87 (10yo), GLOMAR ROUMARE LUCKY 3883 VG-89 (8yo) AND GLOMAR ALBERTO LUCKY 3119 VG-88 (13yo).



ABS Real World Data® - August 2019

TransitionRight® ★★
Bull Fertility ★★★★★ 2411 Obsv

ABVg PRODUCTION 08/19				180 Dtrs	28 Hrds
BPI	272	80% Rel.	ASI	159	90% Rel.
HWI	205	72% Rel.	Overall Type	105	69 Dtrs
TWI	247	80% Rel.	Mammary	100	17 Hrds
Milk ltrs	+566		Calv. Ease	101	98% Rel.
Prot kg	+19	0.07%	Dtr Fertility	104	63% Rel.
Fat kg	+48	0.35%	Cell Count	166	71% Rel.
Milking Speed	101	Temperament	103	Likeability	105 83% Rel.

HA 08/19				69 Dtrs	17 Hrds	84% Rel.
				90	95	100 105 110
Overall Type						105
Mammary System						100



FULL SISTER: GLOMAR SUPERSIRE LUCKY 5433

- ◆ #8 Proven sire with 180 milking daughters
- ◆ Outstanding longevity in cow family from Australia
- ◆ High fat kg and %
- ◆ Adds chest, body and teat length



Stature	Angularity	Body Depth	Chest Width	Pin Width	Pin Set	Foot Angle	Rear Set	Rear Leg Rear View	Udder Depth	Fore Attachment	Rear Attach Height	Rear Attach Width	Centre Ligament	Front Teat Placement	Rear Teat Placement	Teat Length
106	111	101	100	97	100	98	106	105	100	94	102	101	104	97	103	104

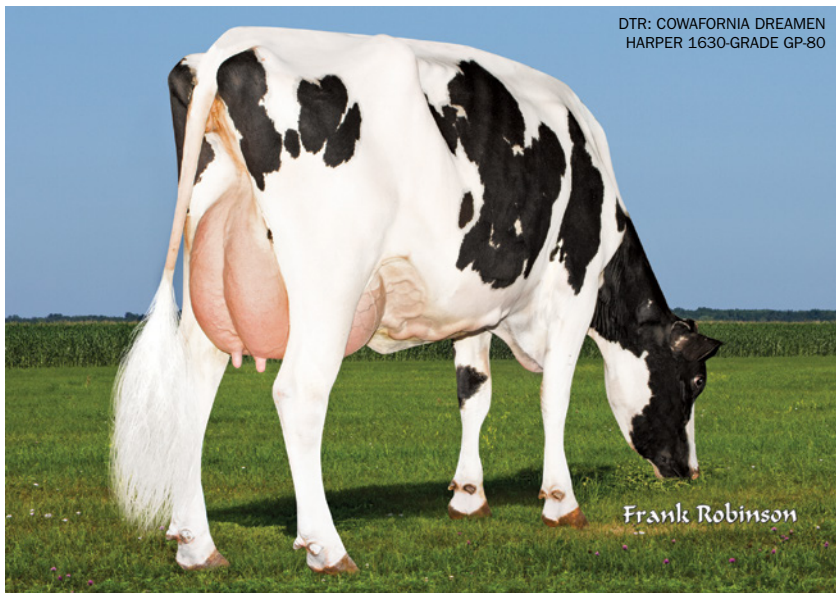
HARPER



NASIS: 80FFKAX
29H017747 COOKIECUTTER HARPER-ET
BALISTO x Epic x Manoman

SIRE: DE-SU 11236 BALISTO-ET
DAM: COOKIECUTTER EPIC HAZEL-ET EX-91
MGD: COOKIECUTTER MOM HALO-ET VG-88

DTR: COWAFORNIA DREAMEN
HARPER 1630-GRADE GP-80



ABS Real World Data® - August 2019

TransitionRight® ★★★★★
Bull Fertility ★★★★★ 2544 Obsv

USDA PTA 08/19				NM\$	766	804 Dtrs	272 Hrds
TPI	+2640			SCC	2.74	93%R	PL +5.1 84%R
Milk lbs	565	96%R		CE	5.7	95%R	GL -2.2 98%R
Fat lbs	80	0.21%		DPR	+0.4	86%R	
Prot lbs	59	0.15%					

ABVg PRODUCTION 08/19				29 Dtrs	12 Hrds
BPI	376	76% Rel.	ASI	278	82% Rel.
HWI	286	69% Rel.	Overall Type	102	Dtrs
TWI	347	74% Rel.	Mammary	103	Hrds
Milk ltrs	+483		Calv. Ease	102	92% Rel.
Prot kg	+32	0.53%	Dtr Fertility	105	74% Rel.
Fat kg	+41	0.51%	Cell Count	143	86% Rel.
Milking Speed	102	Temperament	102	Likeability	103 78% Rel.

US 08/19				154 Dtrs	56 Hrds	92% Rel.
				-2	-1	0 1 2

Type						2.07
Mammary						1.68
Legs & Feet						2.21
Stature	Short					0.93
Strength	Frail					0.95
Body Depth	Shallow					1.15
Angularity	Tight					1.61
Rump Angle	High					-2.10
Thurl Width	Narrow					1.06
Rear Legs-Side Set	Straight					0.22
Rear Legs-Rear View	Curved					2.11
Foot Angle	Low					2.49
Foot & Leg Score	Low					2.18
Fore Udder Attach.	Weak					2.29
Rear Udder Height	Low					2.91
Rear Udder Width	Narrow					2.68
Udder Cleft	Weak					-0.10
Udder Depth	Deep					0.78
Front Teat Place.	Wide					-0.01
Rear Teat Place.	Wide					-0.43
Teat Length	Short					-0.16



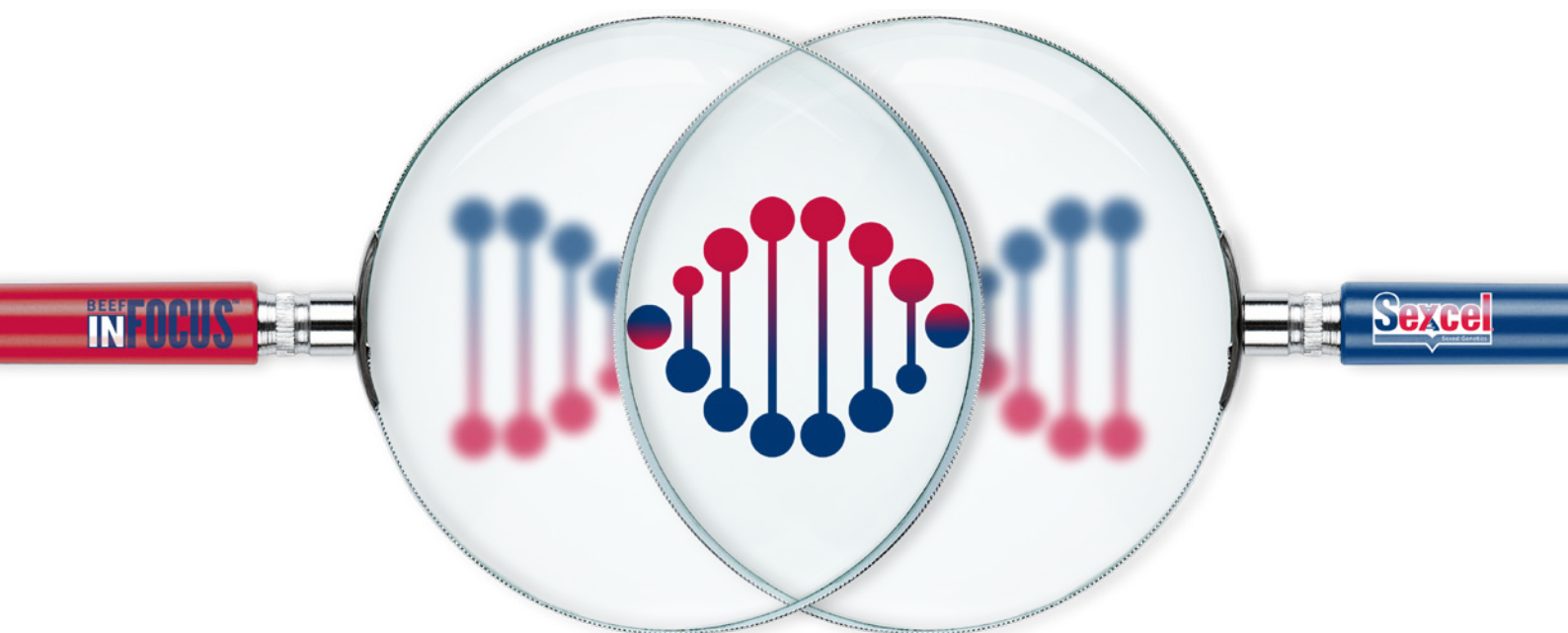
DAM: COOKIECUTTER EPIC HAZEL-ET EX-91

- ◆ #1 BPI with 29 Australian herd tested daughters
- ◆ Global Sensation
- ◆ #4 Canada #4 Germany
- ◆ #5 UK #5 Italy
- ◆ Calving ease and high semen fertility





**BEEF
IN FOCUS™**



**Keeping your genetic path clear.
Strong individually, but
better together.**

Learn more at WWW.ABSGLOBAL.COM/AU or talk to your ABS representative today to bring your herd's future into focus.

Profit from Genetic Progress



RUBELS RED



NASIS: 90FFR39
29H017459 HOOGERHORST DG OH RUBELS RED-ET
Argo x Rubicon x Aikman

SIRE: ENDCO ARGO-ET
DAM: OH DG RUBELLIA-ET
MGD: OOSTERHOF DG ELASNIAI-ET

HOOGERHORST DG OH RUBELS RED-ET



Sexcel

Jane Steel



DAM: OH DG RUBELLIA-ET

#1 NM
Genomic Red

- ◆ #1 NM\$ and gTPI Red bull
- ◆ Elite Red sire with production
- ◆ Outstanding Type & Udders



ABS Real World Data® - August 2019

TransitionRight®

★★★

Bull Fertility

Obsv

USDA PTA 08/19

TPI	+2693	NM\$	863	G Dtrs	G Hrds
Milk lbs	1175	76%R	SCC	2.78	74%R
Fat lbs	89	0.16%	CE	7.7	62%R
Prot lbs	54	0.06%	DPR	-0.6	72%R

ABVg PRODUCTION 08/19

BPI	268	65% Rel.	ASI	120	77% Rel.
HWI	227	58% Rel.	Overall Type	106	Dtrs
TWI	290	63% Rel.	Mammary	108	Hrds
Milk ltrs	+279		Calv. Ease	102	32% Rel.
Prot kg	+13	0.10%	Dtr Fertility	105	50% Rel.
Fat kg	+33	0.31%	Cell Count	157	67% Rel.

Milking Speed **102** Temperament **103** Likeability **106** 60% Rel.

US 08/19 G Dtrs G Hrds 74% Rel.

Type					2.69
Mammary					2.53
Legs & Feet					1.74
Stature	Short				1.57
Strength	Frail				0.75
Body Depth	Shallow				1.02
Angularity	Tight				2.09
Rump Angle	High				0.51
Thurl Width	Narrow				1.57
Rear Legs-Side Set	Straight				1.72
Rear Legs-Rear View	Curved				2.15
Foot Angle	Low				1.42
Foot & Leg Score	Low				1.88
Fore Udder Attach.	Weak				3.06
Rear Udder Height	Low				3.32
Rear Udder Width	Narrow				3.05
Udder Cleft	Weak				1.37
Udder Depth	Deep				2.32
Front Teat Place.	Wide				2.21
Rear Teat Place.	Wide				1.60
Teat Length	Short				-0.27

SPOCK

NASIS: 80FFMA5
29H018182 ROSYLANE-LLC SPOCK-ET
SILVER x Supersire x Tornado

SIRE: SEAGULL-BAY SILVER-ET
DAM: ROSYLANE-LLC SPSIRE 7055-ET
MGD: ROSYLANE-LLC TORNADO5173-ET

ROSYLANE-LLC SPOCK-ET



Sexcel

Beth Hergen



DTR: ABS SPOCK 7819-ET

- ◆ High semen fertility
- ◆ Medium sized cows
- ◆ Adds chest and body
- ◆ Excellent rear udders
- ◆ From the home of GOLDBULLION



ABS Real World Data® - August 2019

TransitionRight®

★★★★

Bull Fertility

23246 Obsv

USDA PTA 08/19

TPI	+2500	NM\$	760	64 Dtrs	20 Hrds
Milk lbs	444	91%R	SCC	2.82	87%R
Fat lbs	102	0.31%	CE	6.8	99%R
Prot lbs	35	0.08%	DPR	-1.0	78%R

ABVg PRODUCTION 08/19

BPI	299	70% Rel.	ASI	167	79% Rel.
HWI	228	63% Rel.	Overall Type	98	Dtrs
TWI	264	69% Rel.	Mammary	100	Hrds
Milk ltrs	+14		Calv. Ease	103	84% Rel.
Prot kg	+13	0.24%	Dtr Fertility	110	60% Rel.
Fat kg	+45	0.63%	Cell Count	156	73% Rel.

Milking Speed **102** Temperament **101** Likeability **104** 68% Rel.

US 08/19 G Dtrs G Hrds 78% Rel.

Type					1.70
Mammary					1.78
Legs & Feet					1.60
Stature	Short				0.72
Strength	Frail				0.76
Body Depth	Shallow				0.69
Angularity	Tight				0.68
Rump Angle	High				-0.01
Thurl Width	Narrow				0.05
Rear Legs-Side Set	Straight				-0.34
Rear Legs-Rear View	Curved				1.86
Foot Angle	Low				1.36
Foot & Leg Score	Low				1.53
Fore Udder Attach.	Weak				1.90
Rear Udder Height	Low				2.64
Rear Udder Width	Narrow				2.43
Udder Cleft	Weak				0.55
Udder Depth	Deep				1.26
Front Teat Place.	Wide				0.68
Rear Teat Place.	Wide				0.46
Teat Length	Short				-0.25

JOPPOLO PP

NASIS: 80FFNBN
29H018639 ABS JOPPOLO PP ET
Answer P x Powerball P x Tango

SIRE: ENDCO THE ANSWER-PO-ET
DAM: ABS 7726 JAZLYN-P-ET
MGD: RICHMOND-FD TANGO-JULY-ET

DAM: ABS 7726 JAZLYN-P-ET



ABS Real World Data® - August 2019

TransitionRight®

★★★★

Bull Fertility

Obsv

USDA PTA 08/19

TPI	+2544	NM\$	770	G Dtrs	G Hrds
Milk lbs	872	80%R	SCC	2.87	77%R
Fat lbs	79	0.17%	CE	6.3	69%R
Prot lbs	47	0.07%	DPR	+2.3	74%R

ABVg PRODUCTION 08/19

BPI	311	65% Rel.	ASI	136	77% Rel.
HWI	283	57% Rel.	Overall Type	100	Dtrs
TWI	285	63% Rel.	Mammary	106	Hrds
Milk ltrs	+227		Calv. Ease	101	33% Rel.
Prot kg	+17	0.20%	Dtr Fertility	112	49% Rel.
Fat kg	+24	0.21%	Cell Count	143	69% Rel.

Milking Speed 103 Temperament 101 Likeability 103 58% Rel.

US 08/19 G Dtrs G Hrds 76% Rel.

Type	-2	-1	0	1	2	1.05
Mammary						1.53
Legs & Feet						0.34



4TH DAM: COYNE-FARMS FREDDI JEVEN-ET VG-87

- ◆ #1 Heterozygous Polled (PP) gBPI
- ◆ Half brother to JERONIMO P and SWAYZE PP
- ◆ High daughter fertility



Stature	Strength	Body Depth	Angularity	Rump Angle	Thurl Width	RL-Side Set	RL-Rear View	Foot Angle
0.71	-0.52	-0.52	1.17	1.84	0.42	-0.63	-0.08	0.36
F&L Score	FU Attach	RU Height	RU Width	Udder Cleft	Udder Depth	Front Teat Pl.	Rear Teat Pl.	Teat Length
0.60	1.52	2.76	2.54	-0.14	1.40	-0.40	-0.48	-1.71

SWAYZE PP RC

NASIS: 80FFPB4
29H018777 DENOVO 7876 SWAYZE-PP-RC-ET
SPLENDID P RC x Powerball P x Tango

SIRE: PINE-TREE SPLENDID P RC-ET
DAM: ABS 7726 JAZLYN-P-ET
MGD: RICHMOND-FD TANGO-JULY-ET

DAM: ABS 7726 JAZLYN-P-ET



ABS Real World Data® - August 2019

TransitionRight®

★★★

Bull Fertility

Obsv

USDA PTA 08/19

TPI	+2533	NM\$	754	G Dtrs	G Hrds
Milk lbs	796	77%R	SCC	2.69	75%R
Fat lbs	80	0.18%	CE	8.1	70%R
Prot lbs	47	0.08%	DPR	-0.4	72%R

ABVg PRODUCTION 08/19

BPI	283	65% Rel.	ASI	138	77% Rel.
HWI	245	58% Rel.	Overall Type	97	Dtrs
TWI	242	64% Rel.	Mammary	101	Hrds
Milk ltrs	+497		Calv. Ease	100	37% Rel.
Prot kg	+22	0.15%	Dtr Fertility	108	51% Rel.
Fat kg	+22	0.01%	Cell Count	168	67% Rel.

Milking Speed 101 Temperament 100 Likeability 102 61% Rel.

US 08/19 G Dtrs G Hrds 75% Rel.

Type	-2	-1	0	1	2	1.75
Mammary						2.70
Legs & Feet						-0.31



4TH DAM: COYNE-FARMS FREDDI JEVEN-ET VG-87

- ◆ Elite PP NM\$ 754
- ◆ Half brother to JOPPOLO PP and JERONIMO P
- ◆ Now available Sexcel™



Stature	Strength	Body Depth	Angularity	Rump Angle	Thurl Width	RL-Side Set	RL-Rear View	Foot Angle
1.30	-0.92	-0.44	1.76	-0.04	0.74	0.68	-0.96	0.09
F&L Score	FU Attach	RU Height	RU Width	Udder Cleft	Udder Depth	Front Teat Pl.	Rear Teat Pl.	Teat Length
0.21	2.84	3.62	3.33	0.75	3.11	0.19	0.39	0.32

PAULY P

NASIS: 80FFNBM
29H018660 ABS PAULY-P-ET
Superhero x MONTEREY x Numero Uno

MGD: BOMAZ NUMERO UNO 5904-ET VG-88



- ♦ Elite gBPI\$
- ♦ Outstanding Daughter Fertility
- ♦ Adds teat length
- ♦ Great Udders



Stature	Strength	Body Depth	Angularity	Rump Angle	Thurl Width	RL-Side Set	RL-Rear View	Foot Angle
0.96	0.17	0.03	0.38	-1.10	1.52	0.15	0.22	0.58
F&L Score	FU Attach	RU Height	RU Width	Udder Cleft	Udder Depth	Front Teat Pl.	Rear Teat Pl.	Teat Length
0.93	(2.90)	(2.71)	(2.49)	(1.11)	(2.46)	0.38	0.37	(0.22)

SIRE: ENDCO SUPERHERO-ET
DAM: BOMAZ PACIFIC-P-ET
MGD: BOMAZ NUMERO UNO 5904-ET VG-88

ABS Real World Data® - August 2019

TransitionRight® ★★★★★
Bull Fertility ★★★★★ 2452 Obsv

USDA PTA 08/19			
TPI	+2583	NM\$	784
Milk lbs	67	80%R	SCC 2.84 78%R
Fat lbs	(88)	0.32%	CE 7.5 89%R
Prot lbs	33	0.11%	DPR (+1.9) 74%R

ABVg PRODUCTION 08/19			
BPI	343	66% Rel.	ASI 143 78% Rel.
HWI	300	59% Rel.	Overall Type 101 Dtrs
TWI	311	65% Rel.	Mammary 100 Hrds
Milk ltrs	-4		Calv. Ease 100 56% Rel.
Prot kg	+12	0.23%	Dtr Fertility (114) 52% Rel.
Fat kg	(+33)	0.48%	Cell Count (167) 69% Rel.

Milking Speed 102 Temperament 103 Likeability 105 61% Rel.
US 08/19 G Dtrs G Hrds 77% Rel.

	-2	-1	0	1	2
Type					1.83
Mammary					2.26
Legs & Feet					0.63



3RD DAM: BOMAZ LAWN BOY P 4817-ET VG-85

KIMBALL RC

NASIS: 80FFMA9
29H018073 SEAGULL-BAY SLVR KIMBALL-ET
SILVER x Numero Uno x Lawn Boy P

DAM: MD-VALLEYVUE NUNO KIM-ET VG-87



- ♦ Outstanding Udders
- ♦ Keeps improving on gBPI\$
- ♦ Improved Daughter Fertility
- ♦ Semen fertility king



SIRE: SEAGULL-BAY SILVER-ET
DAM: MD-VALLEYVUE NUNO KIM-ET VG-87
MGD: MD-VALLEYVUE LB KARA-RED VG-88

ABS Real World Data® - August 2019

TransitionRight® ★★★★★
Bull Fertility ★★★★★ 4105 Obsv

USDA PTA 08/19			
TPI	+2510	NM\$	660
Milk lbs	342	93%R	SCC 2.78 91%R
Fat lbs	55	0.15%	CE 7.5 97%R
Prot lbs	28	0.06%	DPR (+1.3) 80%R

ABVg PRODUCTION 08/19			
BPI	(330)	72% Rel.	ASI 108 80% Rel.
HWI	299	66% Rel.	Overall Type (104) 1Dtrs
TWI	(334)	72% Rel.	Mammary (109) 1 Hrds
Milk ltrs	+46		Calv. Ease 102 86% Rel.
Prot kg	+8	0.12%	Dtr Fertility (116) 61% Rel.
Fat kg	+33	0.44%	Cell Count 146 79% Rel.

Milking Speed 104 Temperament 102 Likeability 105 74% Rel.
US 08/19 47 Dtrs 31 Hrds 84% Rel.

	-2	-1	0	1	2
Type					2.33
Mammary					3.36
Legs & Feet					1.35
Stature	Short				0.97
Strength	Frail				0.62
Body Depth	Shallow				0.05
Angularity	Tight				0.42
Rump Angle	High				0.50
Thurl Width	Narrow				0.21
Rear Legs-Side Set	Straight				-1.08
Rear Legs-Rear View	Curved				1.03
Foot Angle	Low				2.33
Foot & Leg Score	Low				1.41
Fore Udder Attach.	Weak				3.99
Rear Udder Height	Low				4.47
Rear Udder Width	Narrow				4.11
Udder Cleft	Weak				1.20
Udder Depth	Deep				2.67
Front Teat Place.	Wide				1.47
Rear Teat Place.	Wide				0.82
Teat Length	Short				-1.03



Profit From Genetic Progress

ELITE GENOMICS PACKAGE

GROUP
AVERAGE **\$+336** gBPI



ARCHANGEL 4TH DAM: SULLY PLANET MANITOBA-ET VG-85 (photo Sarah Damrow)

AMSTEL DAM: ABS 7484 ANNA-ET GP-84 (photo Beth Herges)

PAULY P MGD: BOMAZ NUMERO UNO 5904-ET VG-88 (photo Lyn McCullough)

OUTLAY DAM: DE-SU DELTA 4900-ET GP-81 (photo Beth Herges)

K&L OH BELLWETHER (photo Jane Steel)

CLINCHER DAM: RELOUGH SUPERSHOT CRIMSON-ET VG-87 (photo Jane Steel)

29H018889

OUTLAY **A2**

QUANTUM x Delta x Supersire

gBPI\$ 304

Udders 107

29H017429

CLINCHER **A2**

JANTANA x Supershot x Mogul

gBPI\$ 369

Dtr Fertility 116

29H018863

AMSTEL

CHARLEY x Yoder x AltaEmbassy

gBPI\$ 360

Dtr Fertility 111

29H017434

ARCHANGEL **A2**

SPECTRE x Supershot x AltaJackman

gBPI\$ 329

Dtr Fertility 110

29H017443

BELLWETHER

AltaTopshot x SILVER x Supersire

gBPI\$ 312

ASI 207

29H018660

PAULY P **A2**

Superhero x MONTEREY x Numero Uno

gBPI\$ 343

Dtr Fertility 114

Buy a minimum of 50 units and 25 units/bull and pay \$16/unit

CSCDYNAMITE

NASIS: 29JJR17
GELBEADO PARK DYNAMITE
DAZZLER x Raceway x ELTON

SIRE: SUNSETCANYON DAZZLER-ET
DAM: GELBEADO PARK RACEWAY COCOA 4608
MGD: GELBEADO PARK COCOA 121ST VG-85

FAMILY MEMBER: GELBEADO PARK COCOA 101



Stu Mackie

- ◆ # 2 Genomic BPI\$ 264
- ◆ High Daughter Fertility
- ◆ Cell count improver
- ◆ Available October



Stature	Angularity	Body Depth	Chest Width	Pin Width	Pin Set	Foot Angle	Rear Set	Rear Leg Rear View	Udder Depth	Fore Attachment	Rear Attach Height	Rear Attach Width	Centre Ligament	Front Teat Placement	Rear Teat Placement	Teat Length
99	100	101	100	100	102	103	100	105	105	102	102	96	104	106	106	98

ABS Real World Data® - August 2019

TransitionRight® ★★★

Bull Fertility

Obsv

ABVg PRODUCTION 08/19

BPI	61% Rel.	G Dtrs	G Hrds
264	54% Rel.	171	72% Rel.
264	59% Rel.	103	50% Rel.
Milk Ltrs	-365	Cell Count	139
Protein kg	+12	Survival	108
Fat kg	+27		

Milking Speed 102 Temperament 101 Likeability 102 58% Rel.

JA 08/19 90 95 100 105 110 49 %Rel.

Overall Type	103
Mammary System	103



FAMILY MEMBER: GREEN PINE DAZZLER DOLLY 3875
OWNED BY GREG BRYCE, NIRRANDA VIC

CSCJAMIEO

NASIS: 29JJR13
MURRAY BROOK JAMIEO
Oliver P x CSCJED x Galaxies

SIRE: DUTCH HOLLOW OLIVER P
DAM: MURRAY BROOK 4058 VG-87
MGD: MURRAY BROOK 3695 VG-86

OLIVER P DTR: PINE PRAIRIE OLIVER FIESTA (5)



© Lisa Jordan

- ◆ # 8 Genomic BPI\$ 231
- ◆ High Type & Udders
- ◆ Adds Stature



Stature	Angularity	Body Depth	Chest Width	Pin Width	Pin Set	Foot Angle	Rear Set	Rear Leg Rear View	Udder Depth	Fore Attachment	Rear Attach Height	Rear Attach Width	Centre Ligament	Front Teat Placement	Rear Teat Placement	Teat Length
104	106	94	99	105	106	101	97	104	107	105	108	110	107	110	105	94

ABS Real World Data® - August 2019

TransitionRight® ★★★

Bull Fertility

Obsv

ABVg PRODUCTION 08/19

BPI	61% Rel.	G Dtrs	G Hrds
231	53% Rel.	123	72% Rel.
193	59% Rel.	100	47% Rel.
279		128	64% Rel.
Milk Ltrs	-91	Survival	108
Protein kg	+8		
Fat kg	+32		

Milking Speed 101 Temperament 104 Likeability 105 54% Rel.

JA 08/19 90 95 100 105 110 50 %Rel.

Overall Type	110
Mammary System	113

CSC TOYOTA

NASIS: 29JJR14
AUBURN VALE TOYOTA
Algernon x ELTON x Passive

SIRE: ALGERNON BROADLIN HILUX



- ◆ Top 1% for Daughter Fertility 107
- ◆ #10 gBPI Genomic sire 227
- ◆ Positive Milk with components
- ◆ Available October



Stature	Angularity	Body Depth	Chest Width	Pin Width	Pin Set	Foot Angle	Rear Set	Rear Leg Rear View	Udder Depth	Fore Attachment	Rear Attach Height	Rear Attach Width	Centre Ligament	Front Teat Placement	Rear Teat Placement	Teat Length
98	104	105	103	106	106	97	104	99	97	100	100	100	102	106	104	104

SIRE: BROADLIN HILUX
DAM: AUBURN VALE LAURETTE 2696
MGD: AUBURN VALE LAURETTE 430 VG-87

ABS Real World Data® - August 2019

TransitionRight®

★★★★★

Bull Fertility

Obsv

ABVg PRODUCTION 08/19

BPI	61% Rel.	ASI	G Dtrs	G Hrds
227	54% Rel.	150	150	72% Rel.
174	60% Rel.	107	107	49% Rel.
208		99	99	65% Rel.
32		104	104	48% Rel.
Milk Ltrs				
Protein kg				
Fat kg				

Milking Speed 102 Temperament 102 Likeability 104 57% Rel.

JA 08/19	G Dtrs	G Hrds	49 %Rel.
	90	95	100
Overall Type			103
Mammary System			103

DAZZLER

NASIS: 80JJJ26
29JE3830 SUNSET CANYON DAZZLER-ET
PREMIER x RESTORE x Impuls

SIRE: HAWARDEN IMPULS PREMIER
DAM: PEARLMONT RESTORE DIXIE-ET EX-90
MGD: PEARLMONT IMPULS DAFFY EX-90

DTR: GREEN PINE DAZZLER DOLLY 3875 OWNED BY GREG BRYCE, NIRRANDA VIC



- ◆ #2 HWI
- ◆ #1 Daughter Fertility 107
- ◆ #2 Mastitis resistance bull 176
- ◆ #1 Survival 114
- ◆ Elite udders +27.40



ABS Real World Data® - August 2019

TransitionRight®

★★★★★

Bull Fertility

4583 Obsv

ABVg PRODUCTION 08/19

BPI	218	71% Rel.	ASI	62	75% Rel.
HWI	201	65% Rel.	Overall Type	103	
TWI	231	70% Rel.	Mammary	101	
Milk Ltrs	-94		Dtr Fertility	107	78% Rel.
Protein kg	+4	0.15%	Cell Count	176	83% Rel.
Fat kg	+15	0.39%			

Milking Speed 102 Temperament 99 Likeability 99 66% Rel.

USDA PTA 08/19	JPI +161	850 Dtrs	200 Hrds
NM\$	479	Milk lbs	+42
CM\$	507	Prod. Life	+7.4
Fat lbs	+25	DPR	+3.4
Protein lbs	+15	Cell Count	2.72

US 08/19 454 Dtrs 137 Hrds 98 %Rel.

Type	-2	-1	0	+1	+2
Udder Composite					1.90
Stature	Short				0.40
Strength	Frail				-0.50
Angularity	Tight				1.20
Rump Angle	High				0.00
Rear Legs-Rear View	Straight				-0.60
Foot Angle	Low				1.20
Fore Udder Attach.	Weak				2.10
Rear Udder Height	Low				1.40
Rear Udder Width	Narrow				0.90
Udder Cleft	Weak				0.80
Udder Depth	Deep				2.60
Front Teat Place.	Wide				0.90
Rear Teat Place.	Wide				1.20
Teat Length	Wide				-1.10

PILGRIM

NASIS: 80JJJ53
29JE3860 CAL-MART MEDALIST PILGRIM
MEDALIST x Louie x JEVON

DTR: FOREST GLEN PILGRIM AMELIA VG-80%



Sexcel



- ◆ High demand and farmer favourite
- ◆ High DPR +2.3
- ◆ Balanced Type and Udders



DTR: AVI-LANCHE PILGRIM IOA 13742 VG-80%

SIRE: SUNSET CANYON MEDALIST-ET
DAM: CAL-MART LOUIE PENNA 3725 GP-83
MGD: CAL-MART JEVON PHYLLIS 2557 VG-86

ABS Real World Data® - August 2019

TransitionRight® ★★★★★
Bull Fertility ★★★ 6536 Obsv

ABVg PRODUCTION 08/19			1 Dtrs	1 Hrds
BPI	98	70% Rel.	ASI	37 76% Rel.
HWI	74	64% Rel.	Overall Type	99
TWI	86	69% Rel.	Mammary	98
Milk Ltrs	238		Dtr Fertility	103 75% Rel.
Protein kg	+8	0.00%	Cell Count	137 82% Rel.
Fat kg	+3	-0.19%		

Milking Speed 101 Temperament 102 Likeability 102 52% Rel.

USDA PTA 08/19			JPI +150	1075 Dtrs	181 Hrds
NM\$	487			Milk lbs	+1133 99% Rel.
CM\$	496			Prod. Life	+5.6 94% Rel.
Fat lbs	+39	-0.07%		DPR	+2.3 93% Rel.
Protein lbs	+38	-0.01%		Cell Count	2.91 98% Rel.

US 08/19			417 Dtrs	99 Hrds	98 %Rel.
Type	-2	-1	0	+1	+2
Udder Composite					1.10
Stature	Short				1.30 Tall
Strength	Frail				1.20 Strong
Angularity	Tight				0.70 Open
Rump Angle	High				0.60 Sloped
Rear Legs-Rear View	Straight				0.60 Curved
Foot Angle	Low				0.30 Steep
Fore Udder Attach.	Weak				1.20 Strong
Rear Udder Height	Low				0.30 High
Rear Udder Width	Narrow				0.50 Wide
Udder Cleft	Weak				1.20 Strong
Udder Depth	Deep				0.80 Shallow
Front Teat Place.	Wide				1.10 Close
Rear Teat Place.	Wide				1.20 Close
Teat Length	Wide				0.00 Close

DALTON P



NASIS: 80JJP42
29JE4137 ALL LYNNS LISTOWEL DALTON P ET
Listowel P x Chisel x DAZZLER

SIRE: HILLVIEW LISTOWEL P
DAM: OAKLANE CHISEL DELLA 2130-ET VG-85
MGD: SUNSET CANYON DZZLER V MAID 2348-ET VG-86

DAM: OAKLANE CHISEL DELLA 2130-ET VG-85



Sexcel

- ◆ #1 JPI Polled carrier
- ◆ High Daughter Fertility
- ◆ Adds stature and strength



ABS Real World Data® - August 2019

TransitionRight® ★★★★★
Bull Fertility Obsv

ABVg PRODUCTION 08/19			G Dtrs	G Hrds
BPI	120	53% Rel.	ASI	40 63% Rel.
HWI	102	46% Rel.	Overall Type	96
TWI	84	51% Rel.	Mammary	95
Milk Ltrs	58		Dtr Fertility	105 38% Rel.
Protein kg	+6	0.10%	Cell Count	148 57% Rel.
Fat kg	+1	-0.04%		

Milking Speed 101 Temperament 102 Likeability 101 44% Rel.

USDA PTA 08/19			JPI +189	G Dtrs	G Hrds
NM\$	593			Milk lbs	+1220 77% Rel.
CM\$	621			Prod. Life	+5.0 67% Rel.
Fat lbs	+57	0.00%		DPR	+1.6 65% Rel.
Protein lbs	+51	0.03%		Cell Count	2.77 74% Rel.

US 08/19			G Dtrs	G Hrds	78 %Rel.
Type	-2	-1	0	+1	+2
Udder Composite					1.40
Stature	Short				1.10 Tall
Strength	Frail				0.70 Strong
Angularity	Tight				1.50 Open
Rump Angle	High				-0.30 Sloped
Rear Legs-Rear View	Straight				0.00 Curved
Foot Angle	Low				1.20 Steep
Fore Udder Attach.	Weak				1.20 Strong
Rear Udder Height	Low				0.40 High
Rear Udder Width	Narrow				1.10 Wide
Udder Cleft	Weak				0.20 Strong
Udder Depth	Deep				0.60 Shallow
Front Teat Place.	Wide				1.00 Close
Rear Teat Place.	Wide				1.30 Close
Teat Length	Wide				-0.40 Close



GMS 2.0

GENETIC MANAGEMENT SYSTEM

“The ABS Genetic Management System (GMS) helps you make the best genetic decisions, improving your herd's future profitability and sustainability one cow at a time”.

-Matt Aikenhead, ABS Technical & Genetic Services



Fast forward your herd's genetic progress by using

PERSUADE & JERONIMO P

Eligible genetic audits pay \$28 for these two exciting sires.

Genetics are improving. So should your mating program.

Now you have more power than ever before to shape the future of your herd. ABS revolutionized the dairy industry nearly 50 years ago when the first mating program was introduced. Five decades later, the science and technology behind every mating processed through GMS 2.0 continues to lead the industry. Now, the most robust mating program in the industry has gotten even better with:



An unprecedented 150+ customizable options



New capabilities to allow differentiated matings for up to 4 herd segments



Robot focused option



Utilization of genomic test data

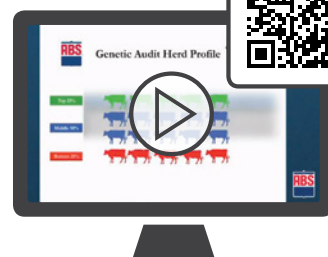
Made to do more than just select a group of sires, you can use GMS 2.0 to segment your cows, design your future herd, and efficiently implement your breeding strategy. With more power to shape the future of your herd than ever before, you can be confident that you are getting the RIGHT genetics for YOU.



View a short, 4-minute educational video that gives you the keys for how a part of this program can help you get the most out of your herd.

Go to: www.ABSGeneticAudit.com

Call to get your roadmap started and take control of making more progress today.



Find out more about the benefits of a Genetic Audit on your herd



Matt Aikenhead 0447 583 311