

# 2019 DAIRY SIRE CATALOGUE

**HOLSTEINS | JERSEYS | RED BREEDS**





# CONTENTS

## HOLSTEIN

2-19

- 2 HOLSTEIN DATA PANEL
- 3 HOLSTEIN DATA PANEL
- 4 TRAIT LEADERS
- 5 MAEBULL / POWERBALL P
- 6 LORD / COLD P / CHARMING / BRENTANO
- 7 SUPERDAVE / GGI SEMINO
- 8 GGI BASEMENT / CEPHUS / GGI KEEPER P / CREED
- 9 JS MONTANA / MASNAH
- 10 FEDORA / CYCLONE / SIR-ROZ / JS MASTERMIND
- 11 DEWARS / SAMURI / JS SUPERHERO / SUPERJET
- 12 PEMBERTON / ETHOS / MRMAGIC / PINJARA / FASHIONABULL
- 13 ANAKIN / TEXMEX / FRANKLAND / SILVERSTAR / DONK
- 15 GGI HOTSPOT P / IT LETSGO / GGI BAJOU / GGI PALETTI PP
- 16 IT DRAGON P / IT INNUENDO / IT DUPLO / LOGANX P
- 17 JSMARDIGRAS / KADE / CHRISTMAS / WRANGLER
- 18 MICROCHIP / GGI HYPE / MENCHOV / VIZABULL
- 19 J11SALON / GUTHRIE / J11CRUSH / SILVERLINE

## JERSEY

25-31

- 25 JERSEY DATA PANEL
- 26 JULSTAR / MR FERTILITY / MANLY / LOKI
- 27 DOUGGAN / ALGERNON
- 28 VALENTINO / OLIVER P / VOYAGEDALE / VALENBLAST
- 29 ASKN / VALIN
- 30 POLLEDGOLD P / INVINCIBLE / HIPWOOD P / DOBSON
- 31 AUSSIEGOLD P / TAHBILK

## RED BREEDS

32-39

- 32 AUSSIE RED DATA PANEL
- 33 ARBGLACIER / ARBSCAREBEAR / ARBABBOTT / ARBCYGNET
- 34 ARBOSCAR / ARBISAAK / ARBJACKO / ARBCAESAR
- 35 ARBNINJAGO / ARBYOGIBEAR / ARBPONGA / ARBEDDIE
- 37 VR VILPERI / VR ULTRA / VR LUKEP / VR FUTARI
- 38 JEDUSOR / MATISSE / FRACAS / INDOLOR
- 39 HARPON / JORDREN / LANZAC / IDAHO

**DISCLAIMER:** The content of this Catalogue is provided for information only. It is published with care and attention to accuracy, but Genetics Australia accepts no liability if, for any reason the information is inaccurate or out of date whether negligent or otherwise.

**Limitation of Liability:** Genetics Australia warrants that it has clear title to the products sold and that all semen processed in its laboratory is processed under rigid quality controls. Since Genetics Australia does not control conditions under which its products are used it does not give, and its agents and employees are forbidden to give, any warranty express or implied as to the conception rate quality or productiveness or the results which may be obtained by the use of any product sold or in connection with any techniques recommended. Genetics Australia makes no other warranty of any kind whatsoever express or implied which extends beyond the description of its products. Where so permitted the liability of Genetics Australia for breach of a condition or warranty implied by statute is limited at Genetics Australia's option to the replacement or repair of the goods or the supply of equivalent goods or the cost of replacing or repairing the goods or of acquiring equivalent goods. So far as the law permits Genetics Australia shall not be liable in any way whatsoever for any indirect or consequential loss or loss of profit.

**Sexed (sorted) semen:** Artificial insemination straws that Genetics Australia offers for sale as sexed (sorted) semen using Sexing Technologies proprietary technology, shall only be used for single-use artificial insemination and not for in-vitro-fertilisation or embryo transfer.

**COVER:** Genetics Australia Sales Representative Rodney Brooks with Byron Smethurst at his farm in Cooriemungle, Victoria.

## Our strongest ever line up of genetics

It is with a great deal of pride we present our 2019 Dairy Sire Catalogue. It is without doubt the strongest group of bulls we have ever offered to Australian farmers.

One of the highlights of the April ABV release was an upgrade to the software used to calculate the breeding values. Its introduction will have wide ranging benefits for the industry with the system now better able to cope with the vast influx of data received from your farm and from around the world. The outcome will be more frequent breeding values and greater stability.

Looking at the young bulls in the catalogue it is clear genetic progress in Australia has taken a quantum leap in 2019 with a large group of Holstein bulls breaking through the 300 BPI barrier while the group of Jersey and Australian Red bulls has also never been stronger. However, it is just not on BPI that the teams excel with important traits such as Type, Cell Count, Daughter Fertility, Survival and Calving Ease showing significant improvement.

I take great delight in seeing bulls bred by Australia Breeders competing on a world scale giving me confidence that we will continue to have a viable and strong domestic program into the future.

For over 60-years Genetics Australia has developed and sourced the best genetics for our members and customers and this year is no different.

I trust you will enjoy selecting bulls from this catalogue as much as I do for your breeding program this year.

**Trevor Henry**

**Dairy Farmer and Chairman of Genetics Australia**

**Follow these references throughout the catalogue to easily identify the bulls that best suit your breeding program.**



*Ensure heifer calves by using 2.1ml or 4.0ml Sexed Ultra.*



*Tomorrows sires today.  
The best genomic sires available in Australia.*



*The first-choice sires for those wanting to produce A2 Milk.*



*High yields and great components.  
Bulls that boost your herd's production.*



*Functionality, longevity, udders and style.  
Siring cows that look good and last the distance.*



*Fertility, milk quality and longevity.  
For cows that last longer and cost you less.*



*Ensure your investment makes a smooth transition into the world by choosing easy calving sires.*

# SAVE UP TO **\$600!**

## THE BEST OF OUR PREMIUM BULL TEAM FOR JUST \$20

MAEBULL

POWERBALL P

MONTANA

SUPERDAVE

SEMINO

ASKN

DOUGGAN

VALENTINO

AUSSIEGOLD P

OLIVER P

**Order 100+ units of any combination for \$20 RRP\***

\* Order 100+ units of any combination of selected bull for \$20 a unit. Offer is subject to semen availability and prices are quoted exclusive of GST. Orders can be placed by contacting your Genetics Australia representative or your local reseller and cannot be used in conjunction with any other offer. Offer is valid from the 22<sup>nd</sup> of April until the 16<sup>th</sup> August 2019.



# Holstein Premium Team / April 2019

## PRODUCTION

Code	A2	Status	Nasis	Pedigree	BPI	Rel %	ASI	Protein (kg)	Protein %	Milk (L)	Fat (kg)	Fat %	Reliability %	Daughters	Herds	RIP %	Overall Type	Mamm System	Rel %	Milking Speed	Temperament	Likability	Rel %	Cell Count	Rel %	Dtr Fertility	Calving Ease	Rel %	RHP	Pack Price	Sexed	
LORD 07H013696	A22	80FFNGM		Scenario x Yoder	376	67	179	20	0.19	366	43	0.40	77	0	0	0	98	107	62	102	102	104	65	157	68	115	54	104	57	\$26.00	\$60.00	
SUPERDAVE	A22	12FFPQB		Superhero x Doorman	374	67	238	23	0.46	-32	41	0.61	77	0	0	0	102	103	62	100	104	104	67	160	67	106	56	101	35	\$24.00	\$20.00	\$52.00
PEMBERTON	A22	12FFRAC		Perseus x Jersey	372	66	185	24	0.35	177	22	0.21	77	0	0	0	106	108	61	101	103	105	66	175	66	109	54	103	33	\$20.00		
ITLETSGO	A12	70FFP77		Applicable x Powerball P	364	66	176	27	0.23	549	24	0.01	77	0	0	0	106	108	61	102	102	105	65	154	66	111	52	101	35	\$36.00		
SUPERJET	A12	93FFP25		Superhero x Balisto	357	67	175	22	0.24	366	31	0.23	77	0	0	0	106	105	61	102	103	105	67	175	67	110	56	102	34	\$24.00		
ANAKIN	A12	12FFRAL		Vador x Anchor	354	66	230	18	0.41	-123	50	0.80	77	0	0	0	103	104	60	101	101	102	62	143	68	109	51	102	37	\$18.00		
ITDUPLO	A12	95FFP02		Superhero x Powerball P	352	66	153	23	0.21	429	22	0.05	77	0	0	0	103	104	61	102	104	105	66	158	67	114	52	102	33	\$20.00		
KADE	A11	12FFPBK		Superhero x Silver	348	66	187	22	0.26	325	36	0.33	77	0	0	0	104	104	61	101	103	105	66	159	67	111	54	102	36	\$18.00		
GGHOTSPOT P	A12	93FFP21		Superhero x Powerball P	343	66	187	30	0.26	598	22	-0.05	77	0	0	0	103	104	60	102	102	105	64	154	67	108	51	102	33	\$45.00		
GGCHARMING	A22	93FFN36		Chevalier x Enforcer	340	67	161	27	0.09	836	31	-0.06	78	0	0	0	102	102	63	102	101	104	67	167	69	110	56	103	63	\$26.00		
ETHOS	A22	12FFRAM		Perseus x Eraser	338	66	145	24	0.22	475	13	-0.11	76	0	0	0	107	108	61	102	104	105	66	162	66	110	53	103	30	\$20.00		
TEXMEX	A12	12FFRBC		Vador x Buddha	338	67	224	20	0.34	78	51	0.69	77	0	0	0	100	102	63	102	103	106	69	160	68	106	57	101	55	\$20.00		
JSMASTERMIND	A12	80FFNEG		Montana x Supersire	338	68	188	28	0.12	815	41	0.10	77	0	0	0	105	107	63	102	103	106	69	160	68	106	57	101	55	\$20.00		
GGHYPER	A12	93FFN16		Harper x Model	336	67	204	29	0.33	448	25	0.09	77	0	0	0	105	107	62	102	103	105	65	155	69	103	54	103	65	\$20.00		
GGIBRENTANO	A22	93FFL16		Balisto x Sudan	336	75	142	18	0.30	70	16	0.18	81	0	0	0	105	103	77	104	102	104	82	168	84	107	76	103	73	\$24.00		
FASHIONABULL	A12	12FFRAH		Perseus x Royalman	335	67	174	24	0.35	187	16	0.11	77	0	0	0	101	104	62	100	102	103	67	140	67	114	55	103	32	\$16.00		
GGISEMINO	A22	93FFN24		Silver x Balisto	335	69	197	25	0.28	375	35	0.28	78	0	0	0	106	109	65	105	102	106	70	140	69	105	61	101	65	\$24.00		
SILVERSTAR	A12	12FFRAG		Silverline x Wyman	334	67	187	22	0.24	330	39	0.36	77	0	0	0	103	104	62	103	102	104	68	148	67	108	56	102	32	\$16.00		
SIR-ROZ 14H013976	A12	80FFNDK		Bandares x Lotomax	334	66	146	16	0.20	185	32	0.34	77	0	0	0	106	110	61	103	102	105	63	174	68	106	52	99	54	\$25.00	\$60.00	
MAEBULL	A22	12FFJ49		Piermos x Shottle	334	84	142	22	0.18	446	21	0.02	95	126	35	17	102	101	81	101	99	103	83	192	86	110	72	102	94	\$24.00	\$20.00	\$65.00
CYCLONE 7H012858	A12	80FFME7		Yoder x Numero Uno	333	68	159	14	0.16	212	45	0.53	77	0	0	0	100	106	64	103	104	105	68	154	69	109	60	101	57	\$28.00	\$55.00	
SILVERLINE	A12	22FFM14		Silver x Fever	332	69	236	30	0.24	644	52	0.35	78	0	0	0	105	109	64	105	103	106	70	139	69	98	62	101	55	\$20.00	\$45.00	
GGBASEMENT	A22	93FFL39		Balisto x Snowman	329	69	183	28	0.25	526	25	0.04	78	0	0	0	103	102	66	101	100	103	70	157	69	108	60	104	66	\$22.00		
JSSUPERHERO	A12	80FFMB7		Supershot x Numero Uno	329	69	135	26	0.08	799	20	-0.20	78	0	0	0	105	104	65	101	104	106	70	174	69	111	62	101	69	\$26.00		
LOGANX P	A12	12FFN94		Powerball P x Davinci	329	67	169	27	0.25	524	18	-0.06	77	0	0	0	101	104	63	102	100	104	69	141	67	112	57	103	41	\$16.00		
JSGOLD P	A22	80FFMHM		Powerball P x Beluga	328	68	130	23	0.20	477	9	-0.16	78	0	0	0	104	107	59	104	103	105	63	144	67	109	50	101	27	\$18.00		
MRMAGIC	A22	12FFRAA		Magictouch x Muscadet	324	66	147	16	0.33	-33	17	0.27	77	0	0	0	106	106	64	103	102	105	65	157	66	108	52	103	33	\$16.00		
PINJARA	A22	12FFRAD		Perseus x Megasire	323	66	157	14	0.25	33	35	0.49	77	0	0	0	106	107	60	103	102	105	65	157	66	108	52	103	33	\$16.00		
CEPHUS 14H014370	A22	80FFPFA		Gatedancer x Josuper	323	66	191	27	0.17	669	40	0.17	77	0	0	0	102	104	60	103	102	105	63	150	68	106	51	102	34	\$26.00		
SPANKERBALL P	A22	80FFK87		Earnhardt P x Robust	318	79	180	37	0.32	740	0	-0.45	87	54	15	40	104	103	75	102	101	104	79	121	85	110	81	103	73	\$24.00	\$20.00	\$60.00
FRANKLAND	A22	12FFRAB		Contender x Powerball P	316	66	142	25	0.12	712	21	-0.14	78	0	0	0	107	106	60	100	103	105	65	175	66	108	50	101	34	\$20.00		
DONK	A22	12FFRBA		Superhero x Palermo	315	68	176	29	0.18	737	27	-0.07	78	0	0	0	103	101	62	103	104	106	68	158	68	107	57	101	36	\$16.00		
ITINNUEENDO	A12	95FFP03		Toohat x Superman	313	66	177	27	0.15	697	35	0.08	77	0	0	0	107	107	60	102	101	105	64	154	67	106	52	102	30	\$22.00		
CREED 7H013244	A22	80FFLHM		Greenway x Daddy	313	72	186	31	0.09	1000	38	-0.06	80	0	0	0	104	106	72	101	102	105	66	148	80	105	60	102	57	\$28.00		
GGIKEEPP P	A22	93FFN37		Kerlan x Supershot	313	66	139	29	0.06	944	19	-0.30	77	0	0	0	109	113	58	101	101	104	62	169	68	107	50	101	34	\$26.00		
FEDORA 14H013980	A12	80FFNBU		Bandares x Kingboy	311	66	143	21	0.16	472	25	0.07	77	0	0	0	105	107	61	101	101	104	63	176	68	107	52	98	55	\$25.00	\$60.00	
JSMONTANA	A22	80FFFLC1		Montross x Numero Uno	306	72	120	15	0.05	483	34	0.20	79	0	0	0	107	108	74	104	101	106	74	159	78	109	62	103	69	\$26.00	\$60.00	
DEWARS 14H07748	A22	80FFMAG		1st Class x Doorman	304	69	94	9	0.10	126	25	0.29	79	0	0	0	106	111	65	102	102	104	70	176	70	107	61	103	70	\$24.00	\$55.00	
GGPALETTI PP RC	A12	93FFM28		Powerball P x Effect P	302	67	150	22	0.18	463	24	0.06	77	0	0	0	101	105	62	101	101	103	66	151	68	110	55	105	65	\$22.00		
GGBAJOU	A12	93FFN23		Barclay x Racer	298	68	192	29	0.25	576	28	0.05	78	0	0	0	103	106	63	101	102	104	68	148	69	102	57	103	38	\$20.00		
MASNAH	A22	12FFM39		MVP x Buddha	295	69	243	26	0.38	221	47	0.55	78	0	0	0	105	107	66	103	105	107	71	126	69	98	63	101	65	\$20.00	\$45.00	
ITDRAGON P	A22	95FFP04		Clash P x Mogul	294	66	166	20	0.35	56	18	0.22	77	0	0	0	103	106	60	102	100	104	64	142	67	104	51	99	23	\$22.00		
SAMURI 7H012897	A22	80FFMF4		Atlasgring x Supersire	285	68	153	20	0.18	406	30	0.02	77	0	0	0	106	107	63	101	102	105	70	137	68	107	61	102	61	\$30.00	\$60.00	
JSMARDIGRAS	A12	80FFJ87		Mogul x Planet	257	83	96	11	0.12	192	20	0.18	89	51	17	29	103	107	87	103	103	106	86	133	89	109	86	102	74	\$24.00		
WRANGLER	A11	12FFH13		Man-O-Man x Shottle	255	81	173	19	0.33	63	26	0.34	92	88	40	32	102	102	80	99	101	103	81	144	79	105	71	103	96	\$18.00		
J11CRUSH	A12	12FFPON		Crush x Goldwyn	251	68	70	10	0.14	80	5	0.03	77	0	0	0	109	113	64	102	102	105	68	175	68	104	62	100	43	\$20.00		
MICROCHIP	A22	12FFL05		Picola x Goldchip	247	71	117	15	0.07	418	32	0.20	77	28	7	42	99	104	72	102	103	105	75	164	65	102	86	102	86	\$18.00	\$45.00	
VIZABULL	A12	12FFL06		Picola x																												

# Holstein Premium Team / April 2019

TYPE																																	
Code	Over Type	Mam Syst	Stat	Bone Qual	Angl	Muzz Wid	Body Dep	Ches Wid	Pin Wid	Pin Set	Loin Strg	Foot Angl	Rear Set	Rear View	Uddr Txt	Under Dep	Fore Att	Rear Athh	Rear Attiv	Cent Lig	Teat Plac front	Teat Plac rear	Teat Leng	Rel	Survival	Rel%	Residual Survival	Rel%	Feedsave	Rel%	Heat Tolerance		
LORD 07H013696	98	107	104	102	96	94	90	97	99	100	93	100	101	96	99	109	104	107	101	104	107	103	90	62	112	55	101	59	3	32	95	38	
	102	103	102	103	99	96	97	95	103	99	98	94	100	98	103	104	100	101	96	105	110	103	95	62	107	56	98	61	22	32	93	38	
SUPERDAVE	106	108	105	104	99	99	94	97	106	99	99	100	96	100	102	107	103	107	103	105	105	102	99	61	109	55	96	59	-43	32	93	38	
	106	108	104	105	98	94	95	94	97	100	100	101	101	104	102	110	105	108	100	105	107	104	95	61	113	53	102	58	-32	32	95	38	
SUPERJET	106	105	107	109	97	94	94	95	100	97	98	96	101	95	108	108	108	98	103	101	108	107	100	60	111	56	99	60	-77	32	92	38	
	103	104	106	104	102	101	97	97	100	105	101	95	104	103	106	103	99	103	102	105	102	102	100	61	107	52	97	57	-91	32	97	38	
ANAKIN	103	104	105	105	97	98	97	97	102	93	98	96	103	99	102	105	101	105	101	104	102	104	96	61	109	53	98	58	49	32	100	38	
	104	104	103	100	99	103	98	101	100	101	101	93	100	102	101	106	103	102	98	104	105	104	89	61	112	55	102	59	-126	32	97	38	
GGIHOTSPOT P	103	104	107	106	98	97	93	92	101	100	99	100	98	100	106	107	100	106	96	105	106	100	96	60	112	52	104	57	-7	31	92	38	
	102	102	103	104	98	98	92	99	101	108	100	100	96	100	103	107	100	105	96	102	101	100	98	63	112	56	100	60	-40	32	92	38	
GGIGHARMING	107	108	104	102	99	94	96	98	99	101	102	101	100	96	100	102	104	106	102	106	107	106	108	98	61	112	54	101	59	-49	32	95	38
	100	102	97	99	95	97	97	98	99	106	102	102	95	101	99	99	98	101	101	101	104	102	99	63	105	57	99	61	43	33	94	38	
TEXMEX	105	107	102	108	98	101	94	97	96	100	96	100	97	99	104	106	104	108	102	105	100	105	104	63	111	57	101	61	-42	33	95	38	
	105	107	101	111	102	94	97	95	101	98	96	100	96	100	94	104	106	102	109	104	104	102	97	99	62	109	55	102	60	36	32	95	38
GGIHYPER	105	103	97	101	96	96	94	97	103	104	98	100	96	102	96	107	105	106	97	100	102	90	96	77	109	67	98	73	119	38	94	38	
	101	104	106	100	96	97	97	100	101	106	100	100	101	102	99	101	101	105	100	102	104	103	97	62	109	55	100	60	-40	32	94	38	
FASHIONABULL	106	109	101	106	101	101	98	101	96	95	96	101	97	104	103	108	108	112	102	104	102	99	85	111	59	102	64	-36	33	93	38		
	103	104	105	102	96	97	95	98	93	103	98	104	103	102	101	107	101	106	102	102	102	101	100	62	110	56	100	60	-17	32	97	38	
SILVERSTAR	106	110	104	110	98	99	94	95	101	100	98	98	97	101	108	109	106	110	101	109	103	108	96	61	112	53	102	58	56	32	95	38	
	102	101	100	98	101	95	99	101	97	104	102	96	98	102	101	105	106	101	100	97	99	95	102	81	110	69	100	75	17	41	102	38	
MAEBULL	100	106	107	106	95	92	90	93	99	101	99	105	94	103	107	107	102	103	99	107	106	104	95	64	110	59	100	63	22	33	95	38	
	105	109	110	108	101	99	95	96	97	104	97	105	99	103	104	108	103	107	108	105	106	103	96	64	110	60	101	64	-73	33	89	38	
SILVERLINE	103	102	98	106	97	95	92	94	97	100	100	102	94	103	100	110	101	104	92	99	109	93	100	66	111	60	101	64	40	34	92	38	
	104	104	104	102	96	97	95	100	103	100	97	95	100	97	102	106	102	104	97	106	104	101	96	65	111	59	99	64	-46	33	100	38	
JSSUPERHERO	105	104	101	105	98	99	92	90	101	97	94	98	102	100	104	107	102	105	97	102	104	102	100	63	109	56	99	61	89	33	93	38	
	101	104	101	105	98	99	94	94	103	100	95	101	102	101	103	110	104	107	102	105	103	105	96	64	111	56	97	61	-10	33	92	38	
LOGANX P	106	106	106	109	101	96	94	94	103	100	95	101	102	101	103	110	104	107	102	105	103	105	96	59	110	51	100	57	61	31	98	38	
	104	107	100	105	96	94	93	98	99	99	94	98	100	97	100	107	102	107	105	103	105	96	99	54	110	51	100	57	61	31	98	38	
MRMAGIC	106	107	104	106	100	96	94	100	106	96	97	98	105	99	107	106	103	104	102	107	104	104	95	60	108	53	97	58	9	32	99	38	
	102	104	102	105	97	96	96	96	97	100	99	103	103	96	100	106	104	108	99	104	96	106	100	60	110	52	102	57	-17	32	93	38	
CEPHUS 14H014370	104	103	109	108	102	92	88	92	103	102	100	92	106	96	105	107	103	107	95	100	103	100	99	75	110	72	99	77	40	38	93	38	
	104	103	109	108	102	92	88	92	103	102	100	92	106	96	105	107	103	107	95	100	103	100	99	75	110	72	99	77	40	38	93	38	
JSPOWERBALL P	107	106	106	104	100	98	95	101	105	100	104	103	99	101	102	108	102	106	98	102	111	103	102	60	110	52	98	57	-42	32	96	38	
	103	101	106	100	97	103	99	102	106	100	98	94	102	98	101	104	99	98	103	104	101	101	98	62	109	57	100	61	-83	32	94	38	
DONK	103	101	106	100	97	103	99	102	106	100	98	94	102	98	101	104	99	98	103	104	101	101	98	62	109	57	100	61	-83	32	94	38	
	107	107	109	107	104	104	99	98	104	101	104	101	102	100	101	107	103	102	105	106	108	109	94	60	112	53	104	58	-88	31	97	38	
ITINNUENDO	104	106	106	105	107	102	96	99	105	102	97	96	96	101	101	103	103	108	101	102	104	104	94	72	108	61	100	66	-52	37	95	38	
	109	113	110	104	102	96	94	95	104	92	98	95	99	100	109	109	105	107	106	112	109	100	105	58	111	50	101	56	-9	31	90	38	
GGIKEEPER P	105	107	105	103	98	102	97	98																									

# HOLSTEIN TRAIT LEADERS

BPI	
LORD	376
SUPERDAVE	374
PEMBERTON	372
ITLETSGO	364
SUPERJET	357
ANAKIN	354
ITDUPLO	352
KADE	348
GGIHOTSPOT P	343
GGICHARMING	340
ETHOS	338
TEXMEX	338
JSMATERMIND	338
GGIHYPE	336
GGIBRENTANO	336
FASHIONABULL	335
GGISEMINO	335
SILVERSTAR	334
SIR-ROZ	334
MAEBULL	334
CYCLONE	333
SILVERLINE	332

MAMMARY	
GGIKEEPER P	113
J11CRUSH	113
J11SALON	111
DEWARS	111
SIR-ROZ	110
GUTHRIE	110
GGISEMINO	109
SILVERLINE	109
PEMBERTON	108
ITLETSGO	108
ETHOS	108
JSMONTANA	108
LORD	107
JSMATERMIND	107
GGIHYPE	107

CALVING EASE	
GGIPALETI PP RC	105
MENCHOV	104
LORD	104
GGIBASEMENT	104
ETHOS	103
PEMBERTON	103
GGIHYPE	103
DEWARS	103
GGIBRENTANO	103
PINJARRA	103
GGIBAJOU	103
FASHIONABULL	103
GGICHARMING	103
JSMONTANA	103

ASI	
MASNAH	243
SUPERDAVE	238
SILVERLINE	236
ANAKIN	230
TEXMEX	224
CHRISTMAS	218
GGIHYPE	204
GGISEMINO	197
GGIBAJOU	192
CEPHUS	191
JSMATERMIND	188
KADE	187
GGIHOTSPOT P	187
SILVERSTAR	187
CREED	186
PEMBERTON	185
GGIBASEMENT	183

PROTEIN KG	
JSPowerball P	37
CREED	31
SILVERLINE	30
GGIHOTSPOT P	30
GGIKEEPER P	29
DONK	29
GGIBAJOU	29
GGIHYPE	29
JSMATERMIND	28
GGIBASEMENT	28
GGICHARMING	27
ITINNUENDO	27
CEPHUS	27
ITLETSGO	27
LOGANX P	27
JSSUPERHERO	26

TEMPERAMENT	
MASNAH	105
JSSUPERHERO	104
ETHOS	104
SUPERDAVE	104
DONK	104
ITDUPLO	104
CYCLONE	104
FRANKLAND	103
PEMBERTON	103
SUPERJET	103
MICROCHIP	103
JSMATERMIND	103
KADE	103
GGIHYPE	103

A2 SIRES	
CEPHUS	A22
CHRISTMAS	A22
JSCOLD P	A22
CREED	A22
DEWARS	A22
DONK	A22
ETHOS	A22
FRANKLAND	A22
GGIBASEMENT	A22
GGIBRENTANO	A22
GGICHARMING	A22
GGIKEEPER P	A22
GGISEMINO	A22
ITDRAGON	A22
JSMONTANA	A22
JSPowerball P	A22
LORD	A22
MAEBULL	A22
MASNAH	A22
MENCHOV	A22
MICROCHIP	A22
MRMAGIC	A22
PEMBERTON	A22
PINJARRA	A22
SAMURI	A22
SUPERDAVE	A22

OVERALL TYPE	
GGIKEEPER P	109
J11CRUSH	109
J11SALON	108
ITINNUENDO	107
ETHOS	107
FRANKLAND	107
JSMONTANA	107
GUTHRIE	107
GGISEMINO	106
PEMBERTON	106
ITLETSGO	106
SUPERJET	106
PINJARRA	106
SAMURI	106
SIR-ROZ	106
JSCOLD P	106
DEWARS	106
MASNAH	105
SILVERLINE	105
CHRISTMAS	105

CELL COUNT	
MAEBULL	192
FEDORA	176
DEWARS	176
FRANKLAND	175
PEMBERTON	175
SUPERJET	175
J11CRUSH	175
JSSUPERHERO	174
SIR-ROZ	174
GGIKEEPER P	169
GGIBRENTANO	168
GGICHARMING	167
MICROCHIP	164
ETHOS	162
JSMATERMIND	160
SUPERDAVE	160
KADE	159
JSMONTANA	159
DONK	158
ITDUPLO	158

MILK	
CREED	1000
GGIKEEPER P	944
MENCHOV	852
GGICHARMING	836
JSMATERMIND	815
JSSUPERHERO	799
JSPowerball P	740
DONK	737
FRANKLAND	712
ITINNUENDO	697
CEPHUS	669
SILVERLINE	644
GGIHOTSPOT P	598

HEAT TOLERANCE	
DEWARS	107
GUTHRIE	106
JSMARDIGRAS	103
MAEBULL	102
J11SALON	102
ITDUPLO	100
JSSUPERHERO	100
PINJARRA	99
J11CRUSH	99
MENCHOV	99
MRMAGIC	98
ANAKIN	97
KADE	97
SILVERLINE	97

DTR FERTILITY	
LORD	115
FASHIONABULL	114
ITDUPLO	114
JSCOLD P	114
LOGANX P	112
KADE	111
JSSUPERHERO	111
ITLETSGO	111
GGIPALETI PP RC	110
ETHOS	110
GGICHARMING	110
JSPowerball P	110
SUPERJET	110
MAEBULL	110
MENCHOV	109
PEMBERTON	109
JSMONTANA	109
JSMARDIGRAS	109
ANAKIN	109
CYCLONE	109
MRMAGIC	109
GGIBASEMENT	108
PINJARRA	108
GGIHOTSPOT P	108
SILVERSTAR	108
TEXMEX	108

SURVIVAL	
DEWARS	113
JSMARDIGRAS	113
ITLETSGO	113
KADE	112
ITINNUENDO	112
FEDORA	112
LORD	112
ETHOS	112
SIR-ROZ	112
GGIHOTSPOT P	112
GGICHARMING	112
JSSUPERHERO	111
JSMONTANA	111
JSMATERMIND	111

SEMEN FERT	
MASTERMIND	2.20
SUPERDAVE	2.14
SUPERHERO	2.11
DRAGON P	1.66
WRANGLER	1.99
MICROCHIP	1.29
MENCHOV	1.21
SEMINO	1.16
BASEMENT	1.14
MARDIGRAS	1.09
SILVERLINE	0.96
LOGANX P	0.71

Calister Maebull

# MAEBULL

Palermo x Shottle

A22

BPI 334/84%



RRP \$24.00  
SEXED \$55.00

## Production

126 dtrs 35 herds RIP 17%

ASI	kgP	P%	Milk	kgF	F%	Rel%
142	22	0.18%	446	21	0.02%	95

## Health Traits

Cell Count	Survival	Dtr Fertility	Calving Ease	Gestation Days
192 86% Rel	110 69% Rel	110 72% Rel	102 94% Rel	-0.39

## Calving

## Workability

83% rel

Milking Speed	Temperament	Likeability	Liveweight	Feed Saved
101	99	103	100 83% Rel	17 41% Rel

## Feed Efficiency

## Type

Overall Type	102	Mammary System	101
Stature	100	Udder Texture	101
Bone Quality	98	Udder Depth	105
Angularity	101	Fore Attach	106
Muzzle Width	95	Rear Att Height	101
Body Depth	99	Rear Att Width	100
Chest Width	101	Centre Ligament	97
Pin Width	97	Teat Place Front	99
Pin Set	104	Teat Place Rear	95
Loin Strength	102	Teat Length	102
Foot Angle	96		
Rear Leg Set	98		
Rear Leg Rear View	102		

50 dtrs 21 herds 81% rel

<b>Sire:</b>	Glenn-Ann Palermo
<b>Dam:</b>	Morningview Shtl Lucy-ET EX90-2E
<b>Herd Book:</b>	1712643
<b>NASIS:</b>	12FFJ49
<b>Breeder:</b>	Schmitt Family, Morningview Holsteins, USA

✓ **SEMEN Fertility**  
+0.55



Maebull Daughter, Maebull 3214

View-Home Powerball P ET

JSPowerball

# POWERBALL P

Earnhardt P x Robust

A22

BPI 318/79%



RRP \$24.00  
SEXED \$60.00

## Production

54 dtrs 15 herds RIP 40%

ASI	kgP	P%	Milk	kgF	F%	Rel%
180	37	0.32%	740	0	-0.45%	87

## Health Traits

Cell Count	Survival	Dtr Fertility	Calving Ease	Gestation Days
121 85% Rel	110 72% Rel	110 81% Rel	103 73% Rel	-1.38

## Calving

## Workability

79% rel

Milking Speed	Temperament	Likeability	Liveweight	Feed Saved
102	101	104	100 77% Rel	40 38% Rel

## Feed Efficiency

## Type

Overall Type	104	Mammary System	103
Stature	109	Udder Texture	105
Bone Quality	108	Udder Depth	107
Angularity	102	Fore Attach	103
Muzzle Width	92	Rear Att Height	107
Body Depth	88	Rear Att Width	95
Chest Width	92	Centre Ligament	100
Pin Width	103	Teat Place Front	103
Pin Set	102	Teat Place Rear	100
Loin Strength	100	Teat Length	99
Foot Angle	92		
Rear Leg Set	106		
Rear Leg Rear View	96		

32 dtrs 9 herds 75% rel

<b>Sire:</b>	Da-So-Burn MOM Earnhardt P
<b>Dam:</b>	Pine Tree 2149 Robst 4846-ET VG87
<b>Herd Book:</b>	H0840003011789392
<b>NASIS:</b>	80FFK87
<b>Source:</b>	Jetstream Genetics, USA

✓ **SEMEN Fertility**  
+0.13



POWERBALL P Daughter, Elm Banks Powerball Silk



SSI Scenario Lord

07H013696

LORD

Scenario x Yoder

A22

Lord MGGD, SSI Bookem Modesto 7269

♀

A22

DNA

BPI

376/67%

Workability	
Milking Speed	102
Temperament	102
Likeability	104
Health	
Cell Count	157
Survival	112
Dtr Fertility	115
Gest Days	-
Calving Ease	104
Feed Saved	3

Sire:	Sandy Valley Scenario
Dam:	SSI Yodr Marini 11002
Herd Book	HOL840M003131003567
NASIS:	80FFNGM
Source:	World Wide Sires, USA

RRP \$26.00

SEXED \$60.00

Production		Overall Type 98		Mammary System 107	
ASI	179	Stature	104	Rear Leg Rear View	96
kgP	20	Bone Quality	102	Udder Texture	99
P%	0.19%	Angularity	96	Udder Depth	109
Milk	366	Muzzle Width	94	Fore Attach	104
kgF	43	Body Depth	90	Rear Att Height	107
F%	0.40%	Chest Width	97	Rear Att Width	101
Rel%	77	Pin Width	99	Centre Ligament	104
		Pin Set	100	Teat Place Front	107
		Loin Strength	93	Teat Place Rear	103
		Foot Angle	100	Teat Length	90
		Rear Leg Set	101		

0 dtrs 0 herds RIP 0%

0 dtrs 0 herds 62% rel

Ernest Anthony Cold P

JSCOLD

COLD P

Powerball P x Beluga

A22

COLD P0

A22

DNA

Trophy

BPI

328/68%

Workability	
Milking Speed	102
Temperament	101
Likeability	104
Health	
Cell Count	147
Survival	111
Dtr Fertility	114
Gest Days	-
Calving Ease	102
Feed Saved	-10

Sire:	View-Home Powerball P-ET
Dam:	Michigan Belg Polar 4957
Herd Book	H0840003129038274
NASIS:	80FFMFm
Source:	Jetstream Genetics, USA

RRP \$24.00

Production		Overall Type 106		Mammary System 106	
ASI	130	Stature	106	Rear Leg Rear View	101
kgP	23	Bone Quality	109	Udder Texture	103
P%	0.20%	Angularity	101	Udder Depth	110
Milk	477	Muzzle Width	96	Fore Attach	104
kgF	9	Body Depth	94	Rear Att Height	107
F%	-0.16%	Chest Width	94	Rear Att Width	97
Rel%	78	Pin Width	103	Centre Ligament	102
		Pin Set	100	Teat Place Front	108
		Loin Strength	95	Teat Place Rear	103
		Foot Angle	101	Teat Length	98
		Rear Leg Set	102		

0 dtrs 0 herds RIP 0%

0 dtrs 0 herds 64% rel

Hlm Charming

GGICHARMING

CHARMING

Chevalier x Enforcer

A22

CHARMING

A22

DNA

Vial

BPI

340/67%

Workability	
Milking Speed	102
Temperament	101
Likeability	104
Health	
Cell Count	167
Survival	112
Dtr Fertility	110
Gest Days	-
Calving Ease	103
Feed Saved	-40

Sire:	Chevalier
Dam:	HLM Levana VG86
Herd Book	DEU666732945
NASIS:	93FFN36
Breeder:	Ralf Hellmuth, Haina, Germany

RRP \$26.00

Production		Overall Type 102		Mammary System 102	
ASI	161	Stature	103	Rear Leg Rear View	100
kgP	27	Bone Quality	104	Udder Texture	103
P%	0.09%	Angularity	98	Udder Depth	107
Milk	836	Muzzle Width	98	Fore Attach	100
kgF	31	Body Depth	92	Rear Att Height	105
F%	-0.06%	Chest Width	99	Rear Att Width	96
Rel%	78	Pin Width	101	Centre Ligament	102
		Pin Set	108	Teat Place Front	101
		Loin Strength	100	Teat Place Rear	100
		Foot Angle	100	Teat Length	98
		Rear Leg Set	96		

0 dtrs 0 herds RIP 0%

0 dtrs 0 herds 63% rel

Brentano

GGIBRENTANO

BRENTANO

Balisto x Sudan

A22

BRENTANO

A22

DNA

Trophy

BPI

336/75%

Workability	
Milking Speed	104
Temperament	102
Likeability	104
Health	
Cell Count	168
Survival	109
Dtr Fertility	107
Gest Days	-
Calving Ease	103
Feed Saved	119

Sire:	De-Su 11236 Balisto
Dam:	Vekis Sudan Mairy VG85
Herd Book	DEU538538554
NASIS:	93FFL16
Breeder:	Vekis Genetics, Nunspeet, Netherlands

RRP \$24.00

Production		Overall Type 105		Mammary System 103	
ASI	142	Stature	97	Rear Leg Rear View	102
kgP	18	Bone Quality	101	Udder Texture	96
P%	0.30%	Angularity	96	Udder Depth	107
Milk	70	Muzzle Width	96	Fore Attach	105
kgF	16	Body Depth	94	Rear Att Height	106
F%	0.18%	Chest Width	97	Rear Att Width	97
Rel%	81	Pin Width	103	Centre Ligament	100
		Pin Set	104	Teat Place Front	102
		Loin Strength	98	Teat Place Rear	90
		Foot Angle	100	Teat Length	96
		Rear Leg Set	96		

0 dtrs 0 herds RIP 0%

0 dtrs 0 herds 77% rel



Warramont Superhero Dave-ET

# SUPERDAVE

Superhero x Doorman

A22

BPI 374/67%



RRP \$24.00  
SEXED \$52.00

## Production

0 dtrs 0 herds RIP 0%

ASI	kgP	P%	Milk	kgF	F%	Rel%
238	23	0.46%	-32	41	0.61%	77

## Health Traits

## Calving

Cell Count	Survival	Dtr Fertility	Calving Ease	Gestation Days
160 67% Rel	107 56% Rel	106 56% Rel	101 35% Rel	-

## Workability

67% rel

## Feed Efficiency

Milking Speed	Temperament	Likeability	Liveweight	Feed Saved
100	104	104	99 62% Rel	22 32% Rel

## Type

Overall Type	102	Mammary System	103
Stature	102	Udder Texture	103
Bone Quality	103	Udder Depth	104
Angularity	99	Fore Attach	100
Muzzle Width	96	Rear Att Height	101
Body Depth	97	Rear Att Width	96
Chest Width	95	Centre Ligament	105
Pin Width	103	Teat Place Front	110
Pin Set	99	Teat Place Rear	103
Loin Strength	98	Teat Length	95
Foot Angle	94		
Rear Leg Set	100		
Rear Leg Rear View	98		

0 dtrs 0 herds 62% rel

**Sire:** Endco Superhero-ET  
**Dam:** Warramont Doorman Daybreak 10th-ET GP82  
**Herd Book:** 2018418  
**NASIS:** 12FFPCB  
**Breeder:** Warramont Holsteins, Mt Gambier, SA

✓ **SEMEN Fertility**  
+2.14



SUPERDAVE

Semino

GGISEMINO

# SEMINO

Silver x Balisto

A22

BPI 335/69%



RRP \$24.00

## Production

0 dtrs 0 herds RIP 0%

ASI	kgP	P%	Milk	kgF	F%	Rel%
197	25	0.28%	375	35	0.28%	78

## Health Traits

## Calving

Cell Count	Survival	Dtr Fertility	Calving Ease	Gestation Days
140 69% Rel	111 59% Rel	105 61% Rel	101 65% Rel	-

## Workability

70% rel

## Feed Efficiency

Milking Speed	Temperament	Likeability	Liveweight	Feed Saved
105	102	106	100 65	-36 33

## Type

Overall Type	106	Mammary System	109
Stature	101	Udder Texture	103
Bone Quality	106	Udder Depth	108
Angularity	101	Fore Attach	108
Muzzle Width	101	Rear Att Height	112
Body Depth	98	Rear Att Width	102
Chest Width	101	Centre Ligament	104
Pin Width	96	Teat Place Front	102
Pin Set	95	Teat Place Rear	99
Loin Strength	96	Teat Length	98
Foot Angle	101		
Rear Leg Set	97		
Rear Leg Rear View	104		

0 dtrs 0 herds 65% rel

**Sire:** Semino-ET Seagull Bay Silver  
**Dam:** De-Su Balisto 3537-ET GP82  
**Herd Book:** US72852479  
**NASIS:** 93FFN24  
**Source:** De Su Holsteins LLC, New Albin IA, USA

✓ **SEMEN Fertility**  
+1.16



SEMINO

Basement

GGIBASEMENT

# BASEMENT

Balisto x Snowman

A22



BASEMENT



**BPI** **329/69%**

**SEMEN Fertility**  
+1.14

**Workability**

Milking Speed	101
Temperament	100
Likeability	103

**Health**

Cell Count	157
Survival	111
Dtr Fertility	108
Gest Days	-
Calving Ease	104
Feed Saved	40

Sire:	De-Su Balisto
Dam:	Melinda VG86
Herd Book	DE 0537556687
NASIS:	93FFL39
Breeder:	Wilhelm Eberhard, Kalkar

RRP \$22.00

Production	
ASI	183
kgP	28
P%	0.25%
Milk	526
kgF	25
F%	0.04%
Rel%	78

Overall Type 103		Mammary System 102	
Stature	98	Rear Leg Rear View	103
Bone Quality	106	Udder Texture	100
Angularity	97	Udder Depth	110
Muzzle Width	95	Fore Attach	101
Body Depth	92	Rear Att Height	104
Chest Width	94	Rear Att Width	92
Pin Width	97	Centre Ligament	99
Pin Set	100	Teat Place Front	109
Loin Strength	100	Teat Place Rear	93
Foot Angle	102	Teat Length	100
Rear Leg Set	94		

0 dtrs 0 herds RIP 0%

0 dtrs 0 herds 66% rel

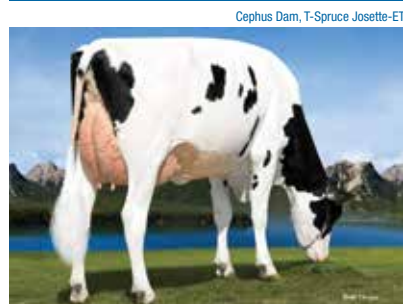
Peak Altacephus

14H014370

# CEPHUS

Gatedancer x Josuper

A22



Cephus Dam, T-Spruce Josette-ET



**BPI** **323/66%**

**Workability**

Milking Speed	103
Temperament	102
Likeability	105

**Health**

Cell Count	150
Survival	110
Dtr Fertility	106
Gest Days	-
Calving Ease	102
Feed Saved	-17

Sire:	Triplecrown Gatedancer
Dam:	T-Spruce Josette VG85
Herd Book	H0840003138499038
NASIS:	80FFPFA
Source:	World Wide Sires, USA

RRP \$26.00

Production	
ASI	191
kgP	27
P%	0.17%
Milk	669
kgF	40
F%	0.17%
Rel%	77

Overall Type 102		Mammary System 104	
Stature	102	Rear Leg Rear View	96
Bone Quality	105	Udder Texture	100
Angularity	97	Udder Depth	106
Muzzle Width	96	Fore Attach	104
Body Depth	96	Rear Att Height	108
Chest Width	96	Rear Att Width	99
Pin Width	97	Centre Ligament	104
Pin Set	100	Teat Place Front	96
Loin Strength	99	Teat Place Rear	106
Foot Angle	103	Teat Length	100
Rear Leg Set	103		

0 dtrs 0 herds RIP 0%

0 dtrs 0 herds 60% rel

Wil Keeper P

GGIKEEPER

# KEEPER P

Kerrigan x Supershot

A22



KEEPERP



**BPI** **313/66%**

**Workability**

Milking Speed	101
Temperament	101
Likeability	104

**Health**

Cell Count	169
Survival	111
Dtr Fertility	107
Gest Days	-
Calving Ease	101
Feed Saved	-9

Sire:	Westcoast Kerrigan
Dam:	Wil Kysu VG85
Herd Book	DEU539675024
NASIS:	93FFN37
Source:	Wilder Holsteins, Vreden, Germany

RRP \$26.00

Production	
ASI	139
kgP	29
P%	0.06%
Milk	944
kgF	19
F%	-0.30%
Rel%	77

Overall Type 109		Mammary System 113	
Stature	110	Rear Leg Rear View	100
Bone Quality	104	Udder Texture	109
Angularity	102	Udder Depth	109
Muzzle Width	96	Fore Attach	105
Body Depth	94	Rear Att Height	107
Chest Width	95	Rear Att Width	106
Pin Width	104	Centre Ligament	112
Pin Set	92	Teat Place Front	109
Loin Strength	98	Teat Place Rear	100
Foot Angle	95	Teat Length	105
Rear Leg Set	99		

0 dtrs 0 herds RIP 0%

0 dtrs 0 herds 58% rel

S-S-I Greenway Creed

7H013244

# CREED

Greenway x Daddy

A22



Creed Dam, S-S-I Daddy Prima 8452-ET



**BPI** **313/72%**

**Workability**

Milking Speed	101
Temperament	102
Likeability	105

**Health**

Cell Count	148
Survival	108
Dtr Fertility	105
Gest Days	-
Calving Ease	102
Feed Saved	-52

Sire:	De-Su Mgl Greenway
Dam:	SSI Daddy Prima 8452 EX90
Herd Book	H0840003123886041
NASIS:	80FFLHM
Source:	World Wide Sires, USA

RRP \$28.00

Production	
ASI	186
kgP	31
P%	0.09%
Milk	1000
kgF	38
F%	-0.06%
Rel%	80

Overall Type 104		Mammary System 106	
Stature	106	Rear Leg Rear View	101
Bone Quality	105	Udder Texture	101
Angularity	107	Udder Depth	103
Muzzle Width	102	Fore Attach	103
Body Depth	96	Rear Att Height	108
Chest Width	99	Rear Att Width	101
Pin Width	105	Centre Ligament	102
Pin Set	102	Teat Place Front	104
Loin Strength	97	Teat Place Rear	104
Foot Angle	96	Teat Length	94
Rear Leg Set	96		

0 dtrs 0 herds RIP 0%

0 dtrs 0 herds 72% rel



*lhg Montana-ET* **JSMONTANA**

# MONTANA

*Montross x Numero Uno* **A22**

**BPI** **306/72%**    **RRP \$26.00**  
**SEXED \$60.00**

Production							0 dtrs 0 herds RIP 0%
ASI	kgP	P%	Milk	kgF	F%	Rel%	
120	15	0.05%	483	34	0.20%	79	

Health Traits			Calving		
Cell Count	Survival	Dtr Fertility	Calving Ease	Gestation Days	
159	111	109	103	-	
78% Rel	65% Rel	62% Rel	69% Rel		

Workability			Feed Efficiency			74% rel
Milking Speed	Temperament	Likeability	Liveweight	Feed Saved		
104	101	106	98	-23	62% Rel	38% Rel

Type			
Overall Type	107	Mammary System	108
Stature	100	Udder Texture	104
Bone Quality	106	Udder Depth	108
Angularity	96	Fore Attach	109
Muzzle Width	97	Rear Att Height	109
Body Depth	94	Rear Att Width	97
Chest Width	97	Centre Ligament	105
Pin Width	97	Teat Place Front	103
Pin Set	100	Teat Place Rear	102
Loin Strength	96	Teat Length	102
Foot Angle	103		
Rear Leg Set	92		
Rear Leg Rear View	100		

0 dtrs 0 herds 74% rel

<b>Sire:</b>	Bacon-Hill Montross	✓ <b>SEMEN Fertility</b> <b>+0.03</b>
<b>Dam:</b>	Sullhrtford Nuno Ana 383-ET, VG87	
<b>Herd Book:</b>	HOUSA000074414026	
<b>NASIS:</b>	80FFLC1	
<b>Source:</b>	Jetstream Genetics, Wisconsin, USA	



Montana Dam, Sullhrtford Nuno Ana 383-ET

*Purnim Mvp Masnah-ET* **MVP x Buddha** **A22**

# MASNAH

**BPI** **295/69%**    **RRP \$20.00**  
**SEXED \$45.00**

Production							0 dtrs 0 herds RIP 0%
ASI	kgP	P%	Milk	kgF	F%	Rel%	
243	26	0.38%	221	47	0.55%	78	

Health Traits			Calving		
Cell Count	Survival	Dtr Fertility	Calving Ease	Gestation Days	
126	110	98	101	-	
69% Rel	61% Rel	63% Rel	65% Rel		

Workability			Feed Efficiency			71% rel
Milking Speed	Temperament	Likeability	Liveweight	Feed Saved		
103	105	107	102	-110	66% Rel	33% Rel

Type			
Overall Type	105	Mammary System	107
Stature	102	Udder Texture	101
Bone Quality	101	Udder Depth	105
Angularity	101	Fore Attach	100
Muzzle Width	100	Rear Att Height	101
Body Depth	99	Rear Att Width	107
Chest Width	104	Centre Ligament	103
Pin Width	99	Teat Place Front	111
Pin Set	96	Teat Place Rear	106
Loin Strength	95	Teat Length	91
Foot Angle	100		
Rear Leg Set	100		
Rear Leg Rear View	103		

0 dtrs 0 herds 66% rel

<b>Sire:</b>	Seagull-Bay MVP ET	✓ <b>SEMEN Fertility</b> <b>+0.44</b>
<b>Dam:</b>	Purnim Buddha Shasnah-ET GP83	
<b>Herd Book:</b>	1912001	
<b>NASIS:</b>	12FFM39	
<b>Breeder:</b>	Purnim Holsteins, Purnim, VIC	



MASNAH

Sandy-Valley Fedora-ET
14H013980

FEDORA

Bandares x Kingboy

A12



BPI

311/66%

Workability	
Milking Speed	101
Temperament	101
Likeability	104
Health	
Cell Count	176
Survival	112
Dtr Fertility	107
Gest Days	-
Calving Ease	98
Feed Saved	-12

Sire:	Wa - Del Yoder Bandares
Dam:	Sandy-Valley KB Liberty-ET
Herd Book	H0840003014562337
NASIS:	80FFNBU
Source:	World Wide Sires,USA

RRP \$25.00  
SEXED \$60.00

Production	
ASI	143
kgP	21
P%	0.16%
Milk	472
kgF	25
F%	0.07%
Rel%	77

Overall Type 105		Mammary System 107	
Stature	105	Rear Leg Rear View	102
Bone Quality	103	Udder Texture	105
Angularity	98	Udder Depth	108
Muzzle Width	102	Fore Attach	105
Body Depth	97	Rear Att Height	104
Chest Width	98	Rear Att Width	103
Pin Width	100	Centre Ligament	105
Pin Set	98	Teat Place Front	104
Loin Strength	99	Teat Place Rear	98
Foot Angle	99	Teat Length	100
Rear Leg Set	99		

0 dtrs 0 herds RIP 0%

0 dtrs 0 herds 61% rel

Ocd Yoder Cyclone-ET
7H012858

CYCLONE

Yoder x Numero Uno

A12



BPI

333/68%

Workability	
Milking Speed	103
Temperament	104
Likeability	105
Health	
Cell Count	154
Survival	110
Dtr Fertility	109
Gest Days	-
Calving Ease	101
Feed Saved	22

Sire:	Woodcrest Mogul Yoder
Dam:	Morsan Uno Cinery VG85
Herd Book	H0L840M003127602009
NASIS:	80FFMF7
Source:	World Wide Sires, USA

RRP \$28.00  
SEXED \$55.00

Production	
ASI	159
kgP	14
P%	0.16%
Milk	212
kgF	45
F%	0.53%
Rel%	77

Overall Type 100		Mammary System 106	
Stature	107	Rear Leg Rear View	103
Bone Quality	106	Udder Texture	107
Angularity	95	Udder Depth	107
Muzzle Width	92	Fore Attach	102
Body Depth	90	Rear Att Height	103
Chest Width	93	Rear Att Width	99
Pin Width	99	Centre Ligament	107
Pin Set	101	Teat Place Front	106
Loin Strength	99	Teat Place Rear	104
Foot Angle	105	Teat Length	95
Rear Leg Set	94		

0 dtrs 0 herds RIP 0%

0 dtrs 0 herds 64% rel

Siemers Bandares Sir-Roz-ET
14H013976

SIR-ROZ

Bandares x Lottomax

A12



BPI

334/66%

Workability	
Milking Speed	103
Temperament	102
Likeability	105
Health	
Cell Count	174
Survival	112
Dtr Fertility	106
Gest Days	-
Calving Ease	99
Feed Saved	56

Sire:	Wa-Del Yoder Bandares
Dam:	Siemers Ltomx S-Roz-An-ET GP83
Herd Book	H0840003138482795
NASIS:	80FFNDK
Source:	World Wide Sires, USA

RRP \$25.00  
SEXED \$60.00

Production	
ASI	146
kgP	16
P%	0.20%
Milk	185
kgF	32
F%	0.34%
Rel%	77

Overall Type 106		Mammary System 110	
Stature	104	Rear Leg Rear View	101
Bone Quality	110	Udder Texture	108
Angularity	98	Udder Depth	109
Muzzle Width	99	Fore Attach	106
Body Depth	94	Rear Att Height	110
Chest Width	95	Rear Att Width	101
Pin Width	101	Centre Ligament	109
Pin Set	100	Teat Place Front	103
Loin Strength	98	Teat Place Rear	108
Foot Angle	98	Teat Length	96
Rear Leg Set	97		

0 dtrs 0 herds RIP 0%

0 dtrs 0 herds 61% rel

Mr Mastermind
JSMMASTERMIND

MASTERMIND

Montana x Supersire

A12



BPI

338/68%

Workability	
Milking Speed	102
Temperament	103
Likeability	106
Health	
Cell Count	160
Survival	111
Dtr Fertility	106
Gest Days	-
Calving Ease	101
Feed Saved	-42

Sire:	IHG Montana
Dam:	Pen-Col Ss Madame-ET VG86
Herd Book	H0840003133065125
NASIS:	80FFNEG
Source:	Jetstream Genetics, USA

RRP \$26.00

Production	
ASI	188
kgP	28
P%	0.12%
Milk	815
kgF	41
F%	0.10%
Rel%	77

Overall Type 105		Mammary System 107	
Stature	102	Rear Leg Rear View	99
Bone Quality	108	Udder Texture	104
Angularity	98	Udder Depth	106
Muzzle Width	101	Fore Attach	104
Body Depth	94	Rear Att Height	108
Chest Width	97	Rear Att Width	102
Pin Width	96	Centre Ligament	105
Pin Set	100	Teat Place Front	100
Loin Strength	96	Teat Place Rear	105
Foot Angle	100	Teat Length	104
Rear Leg Set	97		

0 dtrs 0 herds RIP 0%

0 dtrs 0 herds 63% rel







Kings-Ransom 1st Dewars-ET **14H07748**

# DEWARS

Alta1stClass x Doorman **A22**

Dewars Dam, Kings-Ransom DM Debonair-ET



<b>BPI</b>	<b>304/69%</b>
------------	----------------

Workability	
Milking Speed	102
Temperament	102
Likeability	104

Health	
Cell Count	176
Survival	113
Dtr Fertility	107
Gest Days	-
Calving Ease	103
Feed Saved	30

<b>Sire:</b>	Zahbulls Alta1stClass
<b>Dam:</b>	Kings-Ransom Dm Debonair-ET, EX93
<b>Herd Book</b>	HOUSA000074567945
<b>NASIS:</b>	80FFMAG
<b>Source:</b>	World Wide Sires, USA

**RRP \$24.00**  
**SEXED \$55.00**

Production	
ASI	94
kgP	9
P%	0.10%
Milk	126
kgF	25
F%	0.29%
Rel%	79

Overall Type 106		Mammary System 111	
Stature	106	Rear Leg Rear View	97
Bone Quality	111	Udder Texture	106
Angularity	99	Udder Depth	112
Muzzle Width	93	Fore Attach	105
Body Depth	94	Rear Att Height	111
Chest Width	94	Rear Att Width	100
Pin Width	104	Centre Ligament	106
Pin Set	108	Teat Place Front	111
Loin Strength	101	Teat Place Rear	103
Foot Angle	97	Teat Length	98
Rear Leg Set	98		

0 dtrs 0 herds RIP 0%


0 dtrs 0 herds 65% rel




OCD Spring Samuri **7H012897**

# SAMURI

AltaSpring x Supersire **A22**

SAMURI



<b>BPI</b>	<b>285/68%</b>
------------	----------------

Workability	
Milking Speed	101
Temperament	102
Likeability	105

Health	
Cell Count	153
Survival	110
Dtr Fertility	107
Gest Days	-
Calving Ease	102
Feed Saved	-110

<b>Sire:</b>	Westenrade Altaspring
<b>Dam:</b>	Ocd Supersire 9882-ET VG86
<b>Herd Book</b>	3133106322
<b>NASIS:</b>	80FFMF4
<b>Breeder:</b>	World Wide Sires, USA

**RRP \$30.00**  
**SEXED \$60.00**

Production	
ASI	153
kgP	20
P%	18%
Milk	406
kgF	30
F%	0.02%
Rel%	77

Overall Type 106		Mammary System 107	
Stature	102	Rear Leg Rear View	102
Bone Quality	102	Udder Texture	102
Angularity	101	Udder Depth	106
Muzzle Width	102	Fore Attach	105
Body Depth	100	Rear Att Height	108
Chest Width	102	Rear Att Width	103
Pin Width	103	Centre Ligament	105
Pin Set	94	Teat Place Front	103
Loin Strength	98	Teat Place Rear	102
Foot Angle	100	Teat Length	93
Rear Leg Set	103		

0 dtrs 0 herds RIP 0%

0 dtrs 0 herds 63% rel

Endco Superhero-ET **JSSUPERHERO**

# SUPERHERO

Supershot x Numero Uno **A12**


Superhero Dam, De-Su Uno 3081







<b>BPI</b>	<b>329/69%</b>
------------	----------------

 **SEMEN Fertility +2.11**

Workability	
Milking Speed	101
Temperament	104
Likeability	106

Health	
Cell Count	174
Survival	111
Dtr Fertility	111
Gest Days	-
Calving Ease	101
Feed Saved	-46

<b>Sire:</b>	Cogent Supershot
<b>Dam:</b>	De-Su Uno 3081-ET, VG85
<b>Herd Book</b>	H0840003129037603
<b>NASIS:</b>	80FFMB7
<b>Source:</b>	Jetstream Genetics, USA

**RRP \$26.00**  
**SEXED \$60.00**

Production	
ASI	135
kgP	26
P%	0.08%
Milk	799
kgF	20
F%	-0.20%
Rel%	78

Overall Type 105		Mammary System 104	
Stature	104	Rear Leg Rear View	97
Bone Quality	102	Udder Texture	102
Angularity	96	Udder Depth	106
Muzzle Width	97	Fore Attach	102
Body Depth	95	Rear Att Height	104
Chest Width	100	Rear Att Width	97
Pin Width	103	Centre Ligament	106
Pin Set	100	Teat Place Front	104
Loin Strength	97	Teat Place Rear	101
Foot Angle	95	Teat Length	96
Rear Leg Set	100		

0 dtrs 0 herds RIP 0%

0 dtrs 0 herds 65% rel

Superjet **SUPERJET**

# SUPERJET

Superhero x Balisto **A12**

SUPERJET







<b>BPI</b>	<b>357/67%</b>
------------	----------------

Workability	
Milking Speed	102
Temperament	103
Likeability	105

Health	
Cell Count	175
Survival	111
Dtr Fertility	110
Gest Days	-
Calving Ease	102
Feed Saved	-77

<b>Sire:</b>	Endco Superhero-ET
<b>Dam:</b>	Sandy Valley No Problem GP81
<b>Herd Book</b>	HOLDEUM000360157710
<b>NASIS:</b>	93FFP25
<b>Source:</b>	Masterrind, Germany

**RRP \$24.00**

Production	
ASI	175
kgP	22
P%	0.24%
Milk	366
kgF	31
F%	0.23%
Rel%	77

Overall Type 106		Mammary System 105	
Stature	107	Rear Leg Rear View	95
Bone Quality	109	Udder Texture	108
Angularity	97	Udder Depth	108
Muzzle Width	94	Fore Attach	98
Body Depth	94	Rear Att Height	103
Chest Width	95	Rear Att Width	101
Pin Width	100	Centre Ligament	108
Pin Set	97	Teat Place Front	107
Loin Strength	98	Teat Place Rear	100
Foot Angle	96	Teat Length	104
Rear Leg Set	101		

0 dtrs 0 herds RIP 0%

0 dtrs 0 herds 61% rel

Carenda Pemberton

# PEMBERTON

Perseus x Jacey A22

<b>Sire:</b>	Westcoast Perseus
<b>Dam:</b>	Carenda Jacey Funky VG86
<b>Herd Book:</b>	2030847
<b>NASIS:</b>	12FFRAC
<b>Breeder:</b>	Carenda Holsteins, Boyanup, WA

**BPI** 372/66%

Workability	
Milking Speed	101
Temperament	103
Likeability	105
Health	
Cell Count	175
Survival	109
Dtr Fertility	109
Gest Days	-
Calving Ease	103
Feed Saved	-43



Production	
ASI	185
kgP	24
P%	0.35%
Milk	177
kgF	22
F%	0.21%
Rel%	77

0 dtrs 0 herds RIP 0%

**AVAILABLE JUNE** RRP \$20.00

Overall Type 106	Mammary System 108
Stature	105
Bone Quality	104
Angularity	99
Muzzle Width	99
Body Depth	94
Chest Width	97
Pin Width	106
Pin Set	99
Loin Strength	99
Foot Angle	100
Rear Leg Set	96
Rear Leg Rear View	100
Udder Texture	102
Udder Depth	107
Fore Attach	103
Rear Att Height	107
Rear Att Width	103
Centre Ligament	105
Teat Place Front	105
Teat Place Rear	102
Teat Length	99

0 dtrs 0 herds 61% rel

Redmaw Perseus Ethos-ET

# ETHOS

Perseus x Eraser A22

<b>Sire:</b>	Westcoast Perseus
<b>Dam:</b>	Rengaw Redmaw Erasnjanae-ET GP83
<b>Herd Book:</b>	2045152
<b>NASIS:</b>	12FFRAM
<b>Breeder:</b>	Redmaw Holsteins, Lockington, VIC

**BPI** 338/66%

Workability	
Milking Speed	102
Temperament	104
Likeability	105
Health	
Cell Count	162
Survival	112
Dtr Fertility	110
Gest Days	-
Calving Ease	103
Feed Saved	-49



Production	
ASI	145
kgP	24
P%	0.22%
Milk	475
kgF	13
F%	-0.11%
Rel%	76

0 dtrs 0 herds RIP 0%

**AVAILABLE JUNE** RRP \$20.00

Overall Type 107	Mammary System 108
Stature	104
Bone Quality	102
Angularity	99
Muzzle Width	94
Body Depth	96
Chest Width	98
Pin Width	99
Pin Set	101
Loin Strength	102
Foot Angle	101
Rear Leg Set	100
Rear Leg Rear View	102
Udder Texture	104
Udder Depth	106
Fore Attach	102
Rear Att Height	106
Rear Att Width	106
Centre Ligament	107
Teat Place Front	106
Teat Place Rear	108
Teat Length	98

0 dtrs 0 herds 61% rel

Bundalong Magictouch Mister-ET

# MRMAGIC

Magictouch x Muscadet A22

<b>Sire:</b>	S-S-I Modesty Magictouch-ET
<b>Dam:</b>	Bundalong Muscadet Missy 3579-IMP-ET GP83
<b>Herd Book:</b>	2051945
<b>NASIS:</b>	12FFRAA
<b>Breeder:</b>	Bundalong Holsteins, Kongwak, VIC

**BPI** 324/66%

Workability	
Milking Speed	104
Temperament	103
Likeability	105
Health	
Cell Count	144
Survival	110
Dtr Fertility	109
Gest Days	-
Calving Ease	101
Feed Saved	61



Production	
ASI	147
kgP	16
P%	0.33%
Milk	-33
kgF	17
F%	0.27%
Rel%	77

0 dtrs 0 herds RIP 0%

**AVAILABLE JUNE** RRP \$18.00

Overall Type 104	Mammary System 107
Stature	100
Bone Quality	105
Angularity	96
Muzzle Width	94
Body Depth	93
Chest Width	98
Pin Width	99
Pin Set	99
Loin Strength	94
Foot Angle	98
Rear Leg Set	100
Rear Leg Rear View	97
Udder Texture	100
Udder Depth	107
Fore Attach	102
Rear Att Height	107
Rear Att Width	105
Centre Ligament	103
Teat Place Front	105
Teat Place Rear	96
Teat Length	99

0 dtrs 0 herds 59% rel

Carenda Pinjara

# PINJARA

Perseus x Megasire A22

<b>Sire:</b>	Westcoast Perseus
<b>Dam:</b>	Carenda 6848 Mega F
<b>Herd Book:</b>	2033720
<b>NASIS:</b>	12FFRAD
<b>Breeder:</b>	Carenda Holsteins, Boyanup, WA

**BPI** 323/66%

Workability	
Milking Speed	103
Temperament	102
Likeability	105
Health	
Cell Count	157
Survival	108
Dtr Fertility	108
Gest Days	-
Calving Ease	103
Feed Saved	9



Production	
ASI	157
kgP	14
P%	0.25%
Milk	33
kgF	35
F%	0.49%
Rel%	77

0 dtrs 0 herds RIP 0%

**AVAILABLE JUNE** RRP \$16.00

Overall Type 106	Mammary System 107
Stature	104
Bone Quality	106
Angularity	100
Muzzle Width	96
Body Depth	94
Chest Width	100
Pin Width	106
Pin Set	96
Loin Strength	97
Foot Angle	98
Rear Leg Set	105
Rear Leg Rear View	99
Udder Texture	107
Udder Depth	106
Fore Attach	103
Rear Att Height	104
Rear Att Width	102
Centre Ligament	107
Teat Place Front	104
Teat Place Rear	104
Teat Length	95

0 dtrs 0 herds 60% rel

Illawambra Perseus Debonair

# FASHIONABULL

Perseus x Royalman A12

<b>Sire:</b>	Westcoast Perseus
<b>Dam:</b>	Illawambra Royal Debra 3420 GP84
<b>Herd Book:</b>	2028885
<b>NASIS:</b>	12FFRAH
<b>Breeder:</b>	Illawambra Holsteins, Barrengarry, NSW

**BPI** 335/67%

Workability	
Milking Speed	100
Temperament	102
Likeability	103
Health	
Cell Count	140
Survival	109
Dtr Fertility	114
Gest Days	-
Calving Ease	103
Feed Saved	-40



Production	
ASI	174
kgP	24
P%	0.35%
Milk	187
kgF	16
F%	0.11%
Rel%	77

0 dtrs 0 herds RIP 0%

**AVAILABLE JUNE** RRP \$16.00

Overall Type 101	Mammary System 104
Stature	106
Bone Quality	100
Angularity	96
Muzzle Width	97
Body Depth	97
Chest Width	100
Pin Width	101
Pin Set	106
Loin Strength	100
Foot Angle	100
Rear Leg Set	101
Rear Leg Rear View	102
Udder Texture	99
Udder Depth	101
Fore Attach	101
Rear Att Height	105
Rear Att Width	100
Centre Ligament	102
Teat Place Front	104
Teat Place Rear	103
Teat Length	97

0 dtrs 0 herds 62% rel



Kirk Andrews Vador Anakin

# ANAKIN

Vador x Anchor A12

<b>Sire:</b>	Leothe Dark Vador-ET
<b>Dam:</b>	Kirk Andrews Anchor Jackie 1685 GP82
<b>Herd Book:</b>	2052356
<b>NASIS:</b>	12FFRAL
<b>Breeder:</b>	Kirk Andrews Holsteins, Tamworth, NSW

**BPI** 354/66%

Workability	
Milking Speed	101
Temperament	101
Likeability	102
Health	
Cell Count	143
Survival	107
Dtr Fertility	109
Gest Days	-
Calving Ease	102
Feed Saved	-91



Production	
ASI	230
kgP	18
P%	0.41%
Milk	-123
kgF	50
F%	0.80%
Rel%	77

0 dtrs 0 herds RIP 0%

**AVAILABLE JUNE** RRP \$18.00

Overall Type 103	Mammary System 104
Stature	106
Bone Quality	104
Angularity	102
Muzzle Width	101
Body Depth	97
Chest Width	97
Pin Width	100
Pin Set	105
Loin Strength	101
Foot Angle	95
Rear Leg Set	104
Rear Leg Rear View	103
Udder Texture	106
Udder Depth	103
Fore Attach	99
Rear Att Height	103
Rear Att Width	102
Centre Ligament	105
Teat Place Front	102
Teat Place Rear	102
Teat Length	100

0 dtrs 0 herds 60% rel

Wilara Tex

# TEXMEX

Vador x Buddha A12

<b>Sire:</b>	Leothe Dark Vador-ET
<b>Dam:</b>	Wilara Buddha Trace VG89
<b>Herd Book:</b>	2050240
<b>NASIS:</b>	12FFRBC
<b>Breeder:</b>	Wilara Holsteins, Tinamba, VIC

**BPI** 338/67%

Workability	
Milking Speed	100
Temperament	100
Likeability	102
Health	
Cell Count	141
Survival	105
Dtr Fertility	108
Gest Days	-
Calving Ease	102
Feed Saved	43



Production	
ASI	224
kgP	20
P%	0.34%
Milk	78
kgF	51
F%	0.69%
Rel%	77

0 dtrs 0 herds RIP 0%

**AVAILABLE JUNE** RRP \$16.00

Overall Type 100	Mammary System 102
Stature	97
Bone Quality	99
Angularity	95
Muzzle Width	97
Body Depth	97
Chest Width	98
Pin Width	99
Pin Set	106
Loin Strength	102
Foot Angle	102
Rear Leg Set	95
Rear Leg Rear View	101
Udder Texture	99
Udder Depth	99
Fore Attach	98
Rear Att Height	101
Rear Att Width	101
Centre Ligament	101
Teat Place Front	104
Teat Place Rear	102
Teat Length	99

0 dtrs 0 herds 63% rel

Carenda Frankland

# FRANKLAND

Contender x Powerball P A22

<b>Sire:</b>	Mr Super Contender
<b>Dam:</b>	Carenda Powerball Fayth-ET GP83
<b>Herd Book:</b>	2030847
<b>NASIS:</b>	12FFRAB
<b>Breeder:</b>	Carenda Holsteins, Boyanup, WA

**BPI** 316/66%

Workability	
Milking Speed	100
Temperament	103
Likeability	105
Health	
Cell Count	175
Survival	110
Dtr Fertility	108
Gest Days	-
Calving Ease	101
Feed Saved	-42



Production	
ASI	142
kgP	25
P%	0.12%
Milk	712
kgF	21
F%	-0.14%
Rel%	76

0 dtrs 0 herds RIP 0%

**AVAILABLE JUNE** RRP \$20.00

Overall Type 107	Mammary System 106
Stature	106
Bone Quality	104
Angularity	100
Muzzle Width	98
Body Depth	95
Chest Width	101
Pin Width	105
Pin Set	100
Loin Strength	104
Foot Angle	103
Rear Leg Set	99
Rear Leg Rear View	101
Udder Texture	102
Udder Depth	108
Fore Attach	102
Rear Att Height	106
Rear Att Width	98
Centre Ligament	102
Teat Place Front	111
Teat Place Rear	103
Teat Length	102

0 dtrs 0 herds 60% rel

Country Road Silverline 4910

# SILVERSTAR

Silverline x Wyman A12

<b>Sire:</b>	Glomar Silver 1717-ET
<b>Dam:</b>	Country Road Wyman Anastasia VG86
<b>Herd Book:</b>	2028577
<b>NASIS:</b>	12FFRAG
<b>Breeder:</b>	Country Road Holsteins, Edi Upper, VIC

**BPI** 334/67%

Workability	
Milking Speed	103
Temperament	102
Likeability	104
Health	
Cell Count	148
Survival	110
Dtr Fertility	108
Gest Days	-
Calving Ease	102
Feed Saved	-17



Production	
ASI	187
kgP	22
P%	0.24%
Milk	330
kgF	39
F%	0.36%
Rel%	77

0 dtrs 0 herds RIP 0%

**AVAILABLE JUNE** RRP \$16.00

Overall Type 103	Mammary System 104
Stature	105
Bone Quality	102
Angularity	96
Muzzle Width	97
Body Depth	95
Chest Width	98
Pin Width	93
Pin Set	103
Loin Strength	98
Foot Angle	104
Rear Leg Set	103
Rear Leg Rear View	102
Udder Texture	101
Udder Depth	107
Fore Attach	101
Rear Att Height	106
Rear Att Width	102
Centre Ligament	102
Teat Place Front	102
Teat Place Rear	101
Teat Length	100

0 dtrs 0 herds 62% rel

Warramont Superhero Donk-ET

# DONK

Superhero x Palermo A22

<b>Sire:</b>	Endco Superhero-ET
<b>Dam:</b>	Warramont Palermo Dawn-ET VG86
<b>Herd Book:</b>	2047091
<b>NASIS:</b>	12FFRBA
<b>Breeder:</b>	Warramont Holsteins, Mt Gambier, SA

**BPI** 315/68%

Workability	
Milking Speed	103
Temperament	104
Likeability	106
Health	
Cell Count	158
Survival	109
Dtr Fertility	107
Gest Days	-
Calving Ease	101
Feed Saved	-83



Production	
ASI	176
kgP	29
P%	0.18%
Milk	737
kgF	27
F%	-0.07%
Rel%	78

0 dtrs 0 herds RIP 0%

**AVAILABLE JUNE** RRP \$16.00

Overall Type 103	Mammary System 101
Stature	106
Bone Quality	100
Angularity	97
Muzzle Width	103
Body Depth	99
Chest Width	102
Pin Width	106
Pin Set	100
Loin Strength	98
Foot Angle	94
Rear Leg Set	102
Rear Leg Rear View	98
Udder Texture	101
Udder Depth	104
Fore Attach	99
Rear Att Height	98
Rear Att Width	103
Centre Ligament	104
Teat Place Front	101
Teat Place Rear	101
Teat Length	98

0 dtrs 0 herds 62% rel



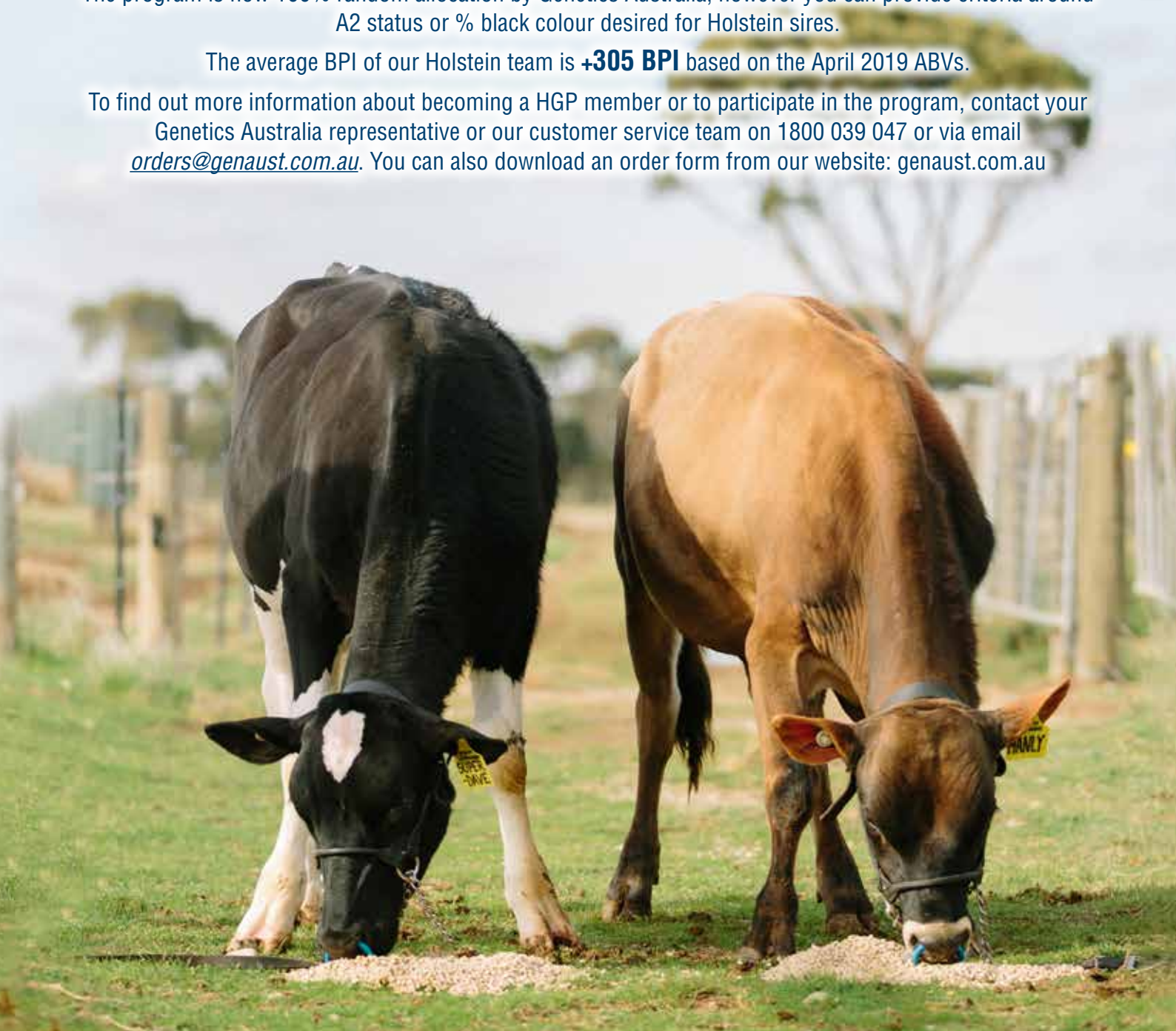
## Our program has now changed to reflect the continuing evolution of our genetic landscape

We will continue to offer the Horizon Genomic Program in 2019, although it will be with some slight changes. All Genetics Australia genomically tested sires, including Holsteins, Jerseys and Aussie Reds, will be distributed as part of this year's program for \$12 per unit of semen.

The program is now 100% random allocation by Genetics Australia, however you can provide criteria around A2 status or % black colour desired for Holstein sires.

The average BPI of our Holstein team is **+305 BPI** based on the April 2019 ABVs.

To find out more information about becoming a HGP member or to participate in the program, contact your Genetics Australia representative or our customer service team on 1800 039 047 or via email [orders@genaust.com.au](mailto:orders@genaust.com.au). You can also download an order form from our website: [genaust.com.au](http://genaust.com.au)





Wil Hotspot P **GGIHOTSPOT**

# HOTSPOT P

Superhero x Powerball P A12



HOTSPOT



**BPI** **343/66%**

Workability	
Milking Speed	102
Temperament	102
Likeability	105
Health	
Cell Count	154
Survival	112
Dtr Fertility	108
Gest Days	-
Calving Ease	102
Feed Saved	-7

<b>Sire:</b>	Endco Superhero-ET
<b>Dam:</b>	WIL Herz P
<b>Herd Book</b>	DE 0538957445
<b>NASIS:</b>	93FFP21
<b>Source:</b>	Herman Holtkamp, Vreden

**RRP \$45.00**

Production	
ASI	187
kgP	30
P%	0.26%
Milk	598
kgF	22
F%	-0.05%
Rel%	77

Overall Type 103	Mammary System 104
Stature	107
Bone Quality	106
Angularity	98
Muzzle Width	97
Body Depth	93
Chest Width	92
Pin Width	101
Pin Set	100
Loin Strength	99
Foot Angle	100
Rear Leg Set	98
Rear Leg Rear View	100
Udder Texture	106
Udder Depth	107
Fore Attach	100
Rear Att Height	106
Rear Att Width	96
Centre Ligament	105
Teat Place Front	106
Teat Place Rear	100
Teat Length	96

0 dtrs 0 herds RIP 0%

0 dtrs 0 herds 60% rel

Vogue Lets Go **ITLETSGO**

# LETSGO

Applicable x Powerball P A12



Letsgo Dam, OConnors Powerball Lindley



**BPI** **364/66%**

Workability	
Milking Speed	102
Temperament	102
Likeability	105
Health	
Cell Count	154
Survival	111
Dtr Fertility	111
Gest Days	-
Calving Ease	101
Feed Saved	-77

<b>Sire:</b>	Stantons Applicable
<b>Dam:</b>	OConnors Powerball Lindley VG88
<b>Herd Book</b>	HOCAN000012687225
<b>NASIS:</b>	70FFP77
<b>Source:</b>	Intermizio, Italy

**RRP \$36.00**

Production	
ASI	176
kgP	27
P%	0.23%
Milk	549
kgF	24
F%	0.01%
Rel%	77

Overall Type 106	Mammary System 108
Stature	104
Bone Quality	105
Angularity	98
Muzzle Width	94
Body Depth	95
Chest Width	94
Pin Width	97
Pin Set	100
Loin Strength	100
Foot Angle	101
Rear Leg Set	101
Rear Leg Rear View	104
Udder Texture	102
Udder Depth	110
Fore Attach	105
Rear Att Height	108
Rear Att Width	100
Centre Ligament	105
Teat Place Front	107
Teat Place Rear	104
Teat Length	95

0 dtrs 0 herds RIP 0%

0 dtrs 0 herds 61% rel

Bajou **GGIBAJOU**

# BAJOU

Barclay x Racer A12



BAJOU



**BPI** **298/68%**

Workability	
Milking Speed	101
Temperament	102
Likeability	104
Health	
Cell Count	148
Survival	111
Dtr Fertility	102
Gest Days	-
Calving Ease	103
Feed Saved	34

<b>Sire:</b>	Glenhaven Ruw Bajou Barclay
<b>Dam:</b>	Blondin TJR Racer Acajou
<b>Herd Book</b>	CA0109045955
<b>NASIS:</b>	93FFN23
<b>Breeder:</b>	Glenhaven Farms, Williamstown, ON

**RRP \$20.00**

Production	
ASI	192
kgP	29
P%	0.25%
Milk	576
kgF	28
F%	0.05%
Rel%	78

Overall Type 103	Mammary System 106
Stature	99
Bone Quality	103
Angularity	97
Muzzle Width	97
Body Depth	95
Chest Width	96
Pin Width	95
Pin Set	96
Loin Strength	93
Foot Angle	102
Rear Leg Set	92
Rear Leg Rear View	106
Udder Texture	101
Udder Depth	108
Fore Attach	105
Rear Att Height	109
Rear Att Width	98
Centre Ligament	105
Teat Place Front	103
Teat Place Rear	100
Teat Length	100

0 dtrs 0 herds RIP 0%

0 dtrs 0 herds 63% rel

Paletti PP **GGIPALETTI**

# PALETTI PP RC

Powerball P x Effect A12



PALETTI



**BPI** **302/67%**

Workability	
Milking Speed	101
Temperament	101
Likeability	103
Health	
Cell Count	151
Survival	109
Dtr Fertility	110
Gest Days	-
Calving Ease	105
Feed Saved	25

<b>Sire:</b>	View-Home Powerball P-ET
<b>Dam:</b>	Ms Sunview SE Suri-Red VG86
<b>Herd Book</b>	US 3012643759
<b>NASIS:</b>	93FFM28
<b>Breeder:</b>	Broekuis Vee BV, TV Albergen

**RRP \$22.00**

Production	
ASI	150
kgP	22
P%	0.18%
Milk	463
kgF	24
F%	0.06%
Rel%	77

Overall Type 101	Mammary System 105
Stature	103
Bone Quality	107
Angularity	98
Muzzle Width	97
Body Depth	93
Chest Width	93
Pin Width	97
Pin Set	98
Loin Strength	99
Foot Angle	98
Rear Leg Set	100
Rear Leg Rear View	102
Udder Texture	101
Udder Depth	107
Fore Attach	103
Rear Att Height	107
Rear Att Width	101
Centre Ligament	100
Teat Place Front	103
Teat Place Rear	102
Teat Length	98

0 dtrs 0 herds RIP 0%

0 dtrs 0 herds 62% rel

Gegania Dragon

ITDRAGON

# DRAGON P


Clash P x Mogul

A22



DRAGON



<b>BPI</b>	<b>294/66%</b>
	<b>SEMEN Fertility</b> <b>+1.66</b>
<b>Workability</b>	
Milking Speed	102
Temperament	100
Likeability	104
<b>Health</b>	
Cell Count	142
Survival	110
Dtr Fertility	104
Gest Days	-
Calving Ease	99
Feed Saved	79

<b>Sire:</b>	Anderstrup Clash P
<b>Dam:</b>	Gegania Deman Daria-ET
<b>Herd Book</b>	ITA28990368442
<b>NASIS:</b>	95FFP04
<b>Source:</b>	Az.Agr.Gegania S.S Di Marchioron Alessio E C. - Pd

RRP \$22.00

Production		Overall Type 103		Mammary System 106	
ASI	166	Stature	104	Rear Leg Rear View	100
kgP	20	Bone Quality	110	Udder Texture	100
P%	0.35%	Angularity	99	Udder Depth	112
Milk	56	Muzzle Width	94	Fore Attach	106
kgF	18	Body Depth	93	Rear Att Height	109
F%	0.22%	Chest Width	89	Rear Att Width	98
Rel%	77	Pin Width	98	Centre Ligament	101
		Pin Set	99	Teat Place Front	105
		Loin Strength	99	Teat Place Rear	102
		Foot Angle	103	Teat Length	98
		Rear Leg Set	96		

0 dtrs 0 herds RIP 0%

0 dtrs 0 herds 60% rel

Go-Farm Innuendo

ITINNUENDO

# INNUENDO

Toohot x Superman

A12



INNUENDO



<b>BPI</b>	<b>313/66%</b>
<b>Workability</b>	
Milking Speed	102
Temperament	101
Likeability	105
<b>Health</b>	
Cell Count	154
Survival	112
Dtr Fertility	106
Gest Days	-
Calving Ease	102
Feed Saved	-88

<b>Sire:</b>	Peak AltaTooHot
<b>Dam:</b>	Kns Inka-ET PF
<b>Herd Book</b>	ITA19991633013
<b>NASIS:</b>	95FFP03
<b>Source:</b>	Intermizoo, Italy

RRP \$22.00

Production		Overall Type 107		Mammary System 107	
ASI	177	Stature	109	Rear Leg Rear View	100
kgP	27	Bone Quality	107	Udder Texture	101
P%	0.15%	Angularity	104	Udder Depth	107
Milk	697	Muzzle Width	104	Fore Attach	103
kgF	35	Body Depth	99	Rear Att Height	102
F%	0.08%	Chest Width	98	Rear Att Width	105
Rel%	77	Pin Width	104	Centre Ligament	106
		Pin Set	101	Teat Place Front	108
		Loin Strength	104	Teat Place Rear	109
		Foot Angle	101	Teat Length	94
		Rear Leg Set	102		

0 dtrs 0 herds RIP 0%

0 dtrs 0 herds 60% rel

Ghezzi Gplus Duplo

ITDUPL0

# DUPLO

Superhero x Powerball P

A12



DUPLO



<b>BPI</b>	<b>352/66%</b>
<b>Workability</b>	
Milking Speed	102
Temperament	104
Likeability	105
<b>Health</b>	
Cell Count	158
Survival	109
Dtr Fertility	114
Gest Days	-
Calving Ease	102
Feed Saved	49

<b>Sire:</b>	Endco Superhero-ET
<b>Dam:</b>	Col Dapany P
<b>Herd Book</b>	ITAM097990057950
<b>NASIS:</b>	95FFP02
<b>Source:</b>	Intermizoo, Italy

RRP \$20.00

Production		Overall Type 103		Mammary System 104	
ASI	153	Stature	105	Rear Leg Rear View	99
kgP	23	Bone Quality	105	Udder Texture	102
P%	0.21%	Angularity	97	Udder Depth	105
Milk	429	Muzzle Width	98	Fore Attach	101
kgF	22	Body Depth	97	Rear Att Height	105
F%	0.05%	Chest Width	97	Rear Att Width	101
Rel%	77	Pin Width	102	Centre Ligament	104
		Pin Set	93	Teat Place Front	102
		Loin Strength	98	Teat Place Rear	104
		Foot Angle	96	Teat Length	96
		Rear Leg Set	103		

0 dtrs 0 herds RIP 0%

0 dtrs 0 herds 61% rel

Redmaw Powerball Logan P-ET

# LOGANX P


Powerball P x Davinci

A12



Loganx Dam, Redmaw Davinci Lautamay



<b>BPI</b>	<b>329/67%</b>
	<b>SEMEN Fertility</b> <b>+0.71</b>
<b>Workability</b>	
Milking Speed	102
Temperament	100
Likeability	104
<b>Health</b>	
Cell Count	141
Survival	109
Dtr Fertility	112
Gest Days	-
Calving Ease	103
Feed Saved	89

<b>Sire:</b>	View-Home Powerball P-ET
<b>Dam:</b>	Redmaw Davinci Lautamay GP84
<b>Herd Book</b>	1967740
<b>NASIS:</b>	12FFN94
<b>Breeder:</b>	Redmaw Holsteins, Lockington, VIC

RRP \$16.00

Production		Overall Type 101		Mammary System 104	
ASI	169	Stature	101	Rear Leg Rear View	100
kgP	27	Bone Quality	105	Udder Texture	104
P%	0.25%	Angularity	98	Udder Depth	107
Milk	524	Muzzle Width	99	Fore Attach	102
kgF	18	Body Depth	92	Rear Att Height	105
F%	-0.06%	Chest Width	90	Rear Att Width	97
Rel%	77	Pin Width	101	Centre Ligament	104
		Pin Set	97	Teat Place Front	102
		Loin Strength	94	Teat Place Rear	104
		Foot Angle	98	Teat Length	100
		Rear Leg Set	102		

0 dtrs 0 herds RIP 0%

0 dtrs 0 herds 63% rel



Mr Moviestar Mardi Gras **JSMARDIGRAS**

# MARDIGRAS

Mogul x Planet A12

Mardigras Daughter, Mardi Gras 6386



**BPI** 257/83%

✓ **SEMEN Fertility**  
+1.09

## Workability

Milking Speed	103
Temperament	103
Likeability	106

## Health

Cell Count	137
Survival	113
Dtr Fertility	109
Gest Days	-0.64
Calving Ease	102
Feed Saved	-10

<b>Sire:</b>	Mountfield SSI DCY Mogul
<b>Dam:</b>	Brookview-E Moviestar-ET VG86
<b>Herd Book</b>	HOUSA000071494657
<b>NASIS:</b>	80FFJB7
<b>Source:</b>	Jetstream Genetics, USA

**RRP \$24.00**

## Production

ASI	96
kgP	11
P%	0.12%
Milk	192
kgF	20
F%	0.18%
Rel%	89

51 dtrs 17 herds RIP 29%

## Overall Type 103 Mammary System 107

Stature	101	Rear Leg Rear View	103
Bone Quality	105	Udder Texture	96
Angularity	96	Udder Depth	110
Muzzle Width	93	Fore Attach	111
Body Depth	93	Rear Att Height	109
Chest Width	97	Rear Att Width	95
Pin Width	97	Centre Ligament	97
Pin Set	104	Teat Place Front	111
Loin Strength	95	Teat Place Rear	100
Foot Angle	101	Teat Length	99
Rear Leg Set	99		

0 dtrs 0 herds 87% rel

Wilara Hero Kade-ET

# KADE

Superhero x Silver A11

Kade Dam, Wilara Silver Kalidascope 6780



**BPI** 348/66%

✓ **SEMEN Fertility**  
+1.09

## Workability

Milking Speed	101
Temperament	103
Likeability	105

## Health

Cell Count	159
Survival	112
Dtr Fertility	111
Gest Days	-
Calving Ease	102
Feed Saved	-126

<b>Sire:</b>	Endco Superhero-ET
<b>Dam:</b>	Wilara Silver Kalidascope GP82
<b>Herd Book</b>	1998305
<b>NASIS:</b>	12FFPBK
<b>Breeder:</b>	Wilara Holsteins, Tinamba, VIC

**RRP \$18.00**

## Production

ASI	187
kgP	22
P%	0.26%
Milk	325
kgF	36
F%	0.33%
Rel%	77

0 dtrs 0 herds RIP 0%

## Overall Type 104 Mammary System 104

Stature	103	Rear Leg Rear View	102
Bone Quality	100	Udder Texture	101
Angularity	99	Udder Depth	106
Muzzle Width	103	Fore Attach	103
Body Depth	98	Rear Att Height	102
Chest Width	101	Rear Att Width	98
Pin Width	100	Centre Ligament	104
Pin Set	101	Teat Place Front	105
Loin Strength	101	Teat Place Rear	104
Foot Angle	93	Teat Length	89
Rear Leg Set	100		

0 dtrs 0 herds 61% rel

Emu Banks Christmas-ET

# CHRISTMAS

Roumare x Goldbullion A22

Christmas Daughter, Kirk & Loader



**BPI** 234/92%

✓ **SEMEN Fertility**  
+0.18

## Workability

Milking Speed	101
Temperament	101
Likeability	103

## Health

Cell Count	124
Survival	104
Dtr Fertility	99
Gest Days	0.49
Calving Ease	101
Feed Saved	-125

<b>Sire:</b>	Roumare
<b>Dam:</b>	Barkly Gold Christy VG89
<b>Herd Book</b>	1560937
<b>NASIS:</b>	12FFE87
<b>Breeder:</b>	Emu Banks Holsteins, Terang, VIC

**RRP \$20.00**

## Production

ASI	218
kgP	25
P%	0.33%
Milk	276
kgF	41
F%	0.43%
Rel%	99

2437 dtrs 302 herds RIP 29%

## Overall Type 105 Mammary System 99

Stature	101	Rear Leg Rear View	104
Bone Quality	90	Udder Texture	100
Angularity	104	Udder Depth	94
Muzzle Width	107	Fore Attach	96
Body Depth	106	Rear Att Height	96
Chest Width	107	Rear Att Width	103
Pin Width	101	Centre Ligament	103
Pin Set	103	Teat Place Front	102
Loin Strength	98	Teat Place Rear	98
Foot Angle	107	Teat Length	100
Rear Leg Set	91		

539 dtrs 96 herds 97% rel

Rengaw Manoman Wrangler-ET

# WRANGLER

Man-O-Man x Shottle A11

Wrangler Daughter, L & K Argento



**BPI** 255/81%

✓ **SEMEN Fertility**  
+1.99

## Workability

Milking Speed	99
Temperament	101
Likeability	103

## Health

Cell Count	144
Survival	107
Dtr Fertility	105
Gest Days	-0.45
Calving Ease	103
Feed Saved	-70

<b>Sire:</b>	Long-Langs Oman Oman
<b>Dam:</b>	Rengaw Shottle Janea-ET VG88
<b>Herd Book</b>	1647547
<b>NASIS:</b>	12FFH13
<b>Breeder:</b>	Rengaw Holsteins, Bridport, TAS

**RRP \$18.00**

## Production

ASI	173
kgP	19
P%	0.33%
Milk	63
kgF	26
F%	0.34%
Rel%	92

88 dtrs 40 herds RIP 32%

## Overall Type 102 Mammary System 102

Stature	101	Rear Leg Rear View	101
Bone Quality	108	Udder Texture	108
Angularity	101	Udder Depth	104
Muzzle Width	96	Fore Attach	98
Body Depth	98	Rear Att Height	99
Chest Width	98	Rear Att Width	102
Pin Width	102	Centre Ligament	107
Pin Set	98	Teat Place Front	102
Loin Strength	98	Teat Place Rear	101
Foot Angle	99	Teat Length	101
Rear Leg Set	102		

46 dtrs 18 herds 80% rel



Hindlee Picola Goldchiptream 1418-ET

# MICROCHIP

Picola x Goldchip

A22

Microchip Daughter, Fala Park MicroChip 5934



**BPI** 247/71%

✓ **SEMEN Fertility**  
+1.29

## Workability

Milking Speed	102
Temperament	103
Likeability	105

## Health

Cell Count	164
Survival	107
Dtr Fertility	102
Gest Days	-2.54
Calving Ease	102
Feed Saved	109

<b>Sire:</b>	Adlejama Delsanto Picola
<b>Dam:</b>	Hindlee Goldchip Ordream VG87
<b>Herd Book</b>	1807180
<b>NASIS:</b>	12FFL15
<b>Breeder:</b>	Hindlee Holsteins, Smithton, TAS

**RRP \$18.00**  
**SEXED \$45.00**

## Production

ASI	117
kgP	15
P%	0.07%
Milk	418
kgF	32
F%	0.20%
Rel%	77

## Overall Type 99 Mammary System 104

Stature	96	Rear Leg Rear View	101
Bone Quality	101	Udder Texture	103
Angularity	100	Udder Depth	100
Muzzle Width	97	Fore Attach	99
Body Depth	97	Rear Att Height	103
Chest Width	99	Rear Att Width	104
Pin Width	101	Centre Ligament	102
Pin Set	105	Teat Place Front	105
Loin Strength	103	Teat Place Rear	103
Foot Angle	95	Teat Length	102
Rear Leg Set	106		

28 dtrs 7 herds RIP 42%

71 dtrs 21 herds 72% rel

Hype

# HYPE

Harper x Model

A12

HYPE



**BPI** 336/67%

## Workability

Milking Speed	102
Temperament	103
Likeability	105

## Health

Cell Count	155
Survival	109
Dtr Fertility	103
Gest Days	-
Calving Ease	103
Feed Saved	36

<b>Sire:</b>	Hype Cookiecutter Harper
<b>Dam:</b>	HaH Karibic VG85
<b>Herd Book</b>	DE 1271409848
<b>NASIS:</b>	93FFN16
<b>Source:</b>	Landgenossenschaft E.G

**RRP \$20.00**

## Production

ASI	204
kgP	29
P%	0.33%
Milk	448
kgF	25
F%	0.09%
Rel%	77

## Overall Type 105 Mammary System 107

Stature	101	Rear Leg Rear View	104
Bone Quality	111	Udder Texture	104
Angularity	102	Udder Depth	106
Muzzle Width	94	Fore Attach	102
Body Depth	97	Rear Att Height	109
Chest Width	95	Rear Att Width	104
Pin Width	101	Centre Ligament	104
Pin Set	98	Teat Place Front	102
Loin Strength	96	Teat Place Rear	97
Foot Angle	100	Teat Length	99
Rear Leg Set	96		

0 dtrs 0 herds RIP 0%

0 dtrs 0 herds 62% rel

Carenda Palermo 270

# MENCHOV

Palermo x O-Man

A22

Menchov Daughter, Malcolm & Steve Garnham



**BPI** 230/84%

✓ **SEMEN Fertility**  
+1.21

## Workability

Milking Speed	102
Temperament	103
Likeability	106

## Health

Cell Count	140
Survival	108
Dtr Fertility	109
Gest Days	-0.33
Calving Ease	104
Feed Saved	-114

<b>Sire:</b>	Glenn-Ann Palermo
<b>Dam:</b>	Carenda Oman Floosie VG87
<b>Herd Book</b>	1719755
<b>NASIS:</b>	12FFJ45
<b>Breeder:</b>	Carenda Holsteins, Boyanup, WA

**RRP \$18.00**

## Production

ASI	94
kgP	23
P%	0.01%
Milk	852
kgF	10
F%	-0.39%
Rel%	95

## Overall Type 105 Mammary System 101

Stature	105	Rear Leg Rear View	94
Bone Quality	94	Udder Texture	100
Angularity	102	Udder Depth	100
Muzzle Width	101	Fore Attach	105
Body Depth	101	Rear Att Height	99
Chest Width	103	Rear Att Width	102
Pin Width	107	Centre Ligament	99
Pin Set	112	Teat Place Front	97
Loin Strength	106	Teat Place Rear	102
Foot Angle	97	Teat Length	104
Rear Leg Set	104		

139 dtrs 37 herds RIP 13%

57 dtrs 25 herds 82% rel

Carenda Vizabull 375

# VIZABULL

Picola x O-Man

A12

VIZABULL



**BPI** 237/82%

✓ **SEMEN Fertility**  
+0.66

## Workability

Milking Speed	101
Temperament	98
Likeability	100

## Health

Cell Count	151
Survival	105
Dtr Fertility	107
Gest Days	-1.89
Calving Ease	103
Feed Saved	-43

<b>Sire:</b>	Adlejama Delsanto Picola
<b>Dam:</b>	Carenda Oman Verna VG87
<b>Herd Book</b>	1790646
<b>NASIS:</b>	12FFL06
<b>Breeder:</b>	Carenda Holsteins, Boyanup, WA

**RRP \$18.00**

## Production

ASI	130
kgP	6
P%	0.28%
Milk	-325
kgF	32
F%	0.65%
Rel%	93

## Overall Type 100 Mammary System 101

Stature	92	Rear Leg Rear View	96
Bone Quality	101	Udder Texture	99
Angularity	100	Udder Depth	100
Muzzle Width	101	Fore Attach	99
Body Depth	100	Rear Att Height	105
Chest Width	103	Rear Att Width	101
Pin Width	98	Centre Ligament	100
Pin Set	107	Teat Place Front	96
Loin Strength	101	Teat Place Rear	102
Foot Angle	96	Teat Length	96
Rear Leg Set	104		

167 dtrs 46 herds RIP 66%

84 dtrs 23 herds 84% rel

Elmar Salon-ET

# J11SALON

Solomon x Goldwyn

A12

J11Salon Dam, Elmar Goldwyn Jessica 11



**BPI** 202/69%

## Workability

Milking Speed	103
Temperament	102
Likeability	104

## Health

Cell Count	144
Survival	110
Dtr Fertility	107
Gest Days	-
Calving Ease	100
Feed Saved	76

<b>Sire:</b>	Walnutlawn Solomon
<b>Dam:</b>	Elmar Goldwyn Jessica 11 ET EX92 3E
<b>Herd Book</b>	2018891
<b>NASIS:</b>	12FFPCM
<b>Breeder:</b>	Elmar Holsteins, Leitchville, VIC

**RRP \$20.00**

## Production

ASI	19
kgP	8
P%	-0.03%
Milk	358
kgF	0
F%	-0.22%
Rel%	78

## Overall Type 108 Mammary System 111

Stature	107	Rear Leg Rear View	104
Bone Quality	108	Udder Texture	105
Angularity	105	Udder Depth	110
Muzzle Width	89	Fore Attach	112
Body Depth	97	Rear Att Height	108
Chest Width	92	Rear Att Width	101
Pin Width	103	Centre Ligament	105
Pin Set	105	Teat Place Front	106
Loin Strength	103	Teat Place Rear	104
Foot Angle	108	Teat Length	99
Rear Leg Set	98		

0 dtrs 0 herds RIP 0%

0 dtrs 0 herds 66% rel

Fustead Goldwyn Guthrie

# GUTHRIE

Goldwyn x Blitz

A12

Guthrie Daughter, Luck-E Guthrie Kleopatra



**BPI** 194/93%

## Workability

Milking Speed	101
Temperament	102
Likeability	105

## Health

Cell Count	141
Survival	109
Dtr Fertility	101
Gest Days	1.51
Calving Ease	102
Feed Saved	51

<b>Sire:</b>	Braedale Goldwyn
<b>Dam:</b>	Regancrest-Mws Brit-ET EX90
<b>Herd Book</b>	HOUSA000137191143
<b>NASIS:</b>	80FFC69
<b>Source:</b>	World Wide Sires, USA

**RRP \$20.00**

## Production

ASI	77
kgP	13
P%	0.07%
Milk	343
kgF	12
F%	-0.04%
Rel%	99

## Overall Type 107 Mammary System 110

Stature	108	Rear Leg Rear View	105
Bone Quality	102	Udder Texture	107
Angularity	104	Udder Depth	104
Muzzle Width	94	Fore Attach	108
Body Depth	97	Rear Att Height	105
Chest Width	94	Rear Att Width	105
Pin Width	108	Centre Ligament	109
Pin Set	102	Teat Place Front	102
Loin Strength	99	Teat Place Rear	103
Foot Angle	103	Teat Length	100
Rear Leg Set	103		

2475 dtrs 323 herds RIP 26%

564 dtrs 124 herds 98% rel

Elmar Crush-ET

# J11CRUSH

Crush x Goldwyn

A12

J11Crush



**BPI** 251/68%

## Workability

Milking Speed	102
Temperament	102
Likeability	105

## Health

Cell Count	175
Survival	109
Dtr Fertility	104
Gest Days	-
Calving Ease	100
Feed Saved	28

<b>Sire:</b>	Maverick Crush
<b>Dam:</b>	Elmar Goldwyn Jessica 11 ET EX92 3E
<b>Herd Book</b>	2018793
<b>NASIS:</b>	12FFPCN
<b>Breeder:</b>	Elmar Holsteins, Leitchville, VIC

**RRP \$20.00**

## Production

ASI	70
kgP	10
P%	0.14%
Milk	80
kgF	5
F%	0.03%
Rel%	77

## Overall Type 109 Mammary System 113

Stature	109	Rear Leg Rear View	106
Bone Quality	110	Udder Texture	106
Angularity	103	Udder Depth	110
Muzzle Width	94	Fore Attach	113
Body Depth	98	Rear Att Height	108
Chest Width	93	Rear Att Width	101
Pin Width	101	Centre Ligament	109
Pin Set	95	Teat Place Front	110
Loin Strength	95	Teat Place Rear	108
Foot Angle	106	Teat Length	100
Rear Leg Set	100		

0 dtrs 0 herds RIP 0%

0 dtrs 0 herds 64% rel

Glomar Silver 1717-ET

# SILVERLINE

Silver x Fever

A12

Silverline Dam, Glomar Fever Lady



**BPI** 332/69%

✓ **SEMEN Fertility**  
+0.96

## Workability

Milking Speed	105
Temperament	103
Likeability	106

## Health

Cell Count	139
Survival	110
Dtr Fertility	98
Gest Days	-
Calving Ease	101
Feed Saved	-73

<b>Sire:</b>	Seagull-Bay Silver
<b>Dam:</b>	Glomar Fever Lady 4634-ET VG85
<b>Herd Book</b>	1880201
<b>NASIS:</b>	22FFM14
<b>Breeder:</b>	Glomar Holsteins, Bundalaguah, VIC

**RRP \$20.00**  
**SEXED \$45.00**

## Production

ASI	236
kgP	30
P%	0.24%
Milk	644
kgF	52
F%	0.35%
Rel%	78

## Overall Type 105 Mammary System 109

Stature	110	Rear Leg Rear View	103
Bone Quality	108	Udder Texture	104
Angularity	101	Udder Depth	108
Muzzle Width	99	Fore Attach	103
Body Depth	95	Rear Att Height	107
Chest Width	96	Rear Att Width	108
Pin Width	97	Centre Ligament	105
Pin Set	104	Teat Place Front	106
Loin Strength	97	Teat Place Rear	103
Foot Angle	105	Teat Length	96
Rear Leg Set	99		

0 dtrs 0 herds RIP 0%

0 dtrs 0 herds 64% rel





## Cloud Based, Multimetric Smart Collar

**HEALTH** > Ruminantion > Resting > Feeding  
**REPRODUCTION** > Estrus Activity > Mounting > Chin Resting

- Accurate timely alerts via desktop, tablet or smartphone
- 24/7 technical support
- Automatic software updates
- Remote off farm heifer monitoring
- Push notifications & text messages
- Long range capabilities
- Remote gateway for off farm & heifer management

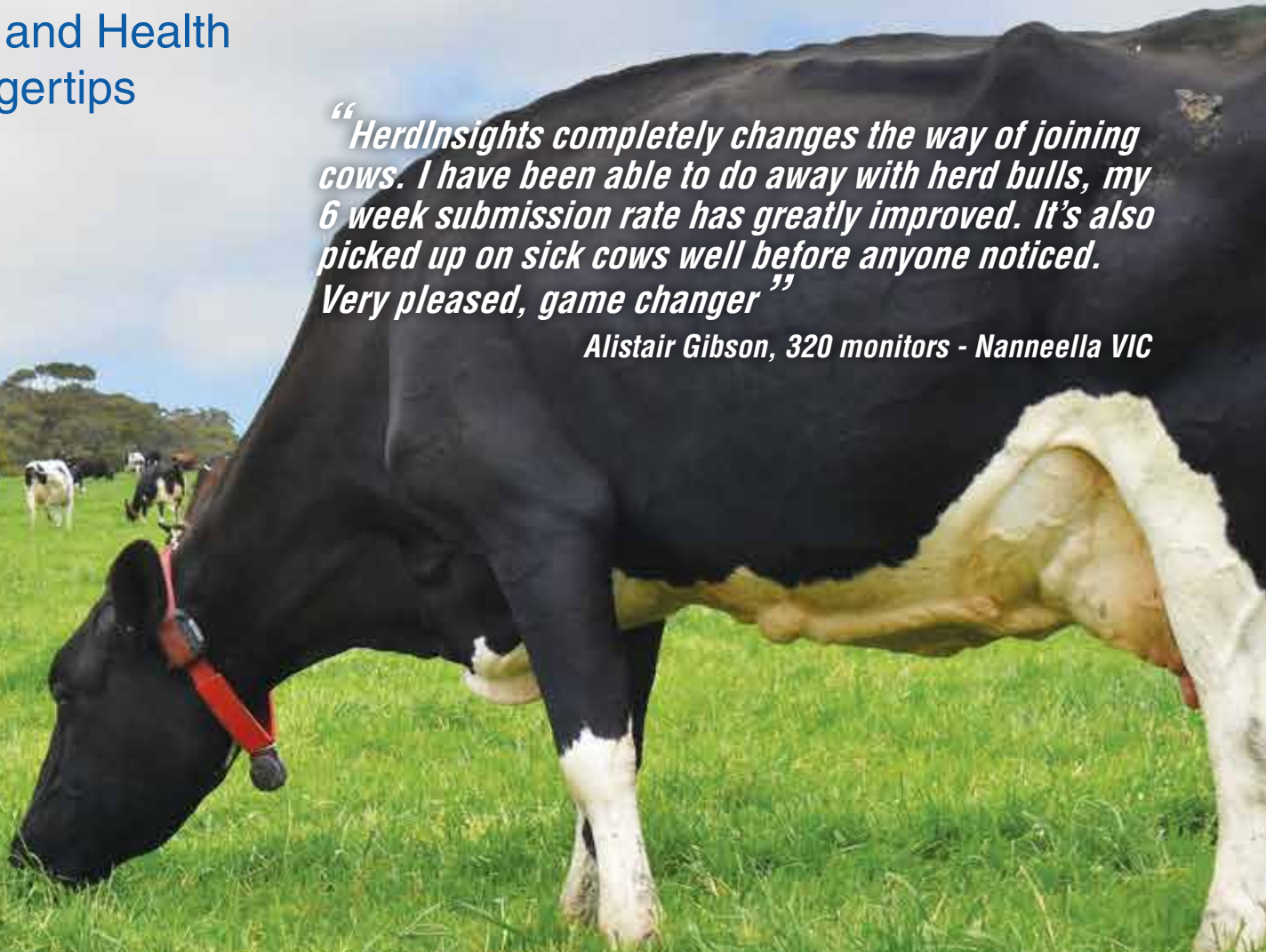


# Insights

Productive and Health  
at your fingertips

*"HerdInsights completely changes the way of joining cows. I have been able to do away with herd bulls, my 6 week submission rate has greatly improved. It's also picked up on sick cows well before anyone noticed. Very pleased, game changer"*

Alistair Gibson, 320 monitors - Nanneella VIC



For more information, please contact a Genetics Australia Representative, or call 1800 039 047



# STARS OF FutureGen sires

*Winaview Superhero Avenger* **\$26.00**

## ENDGAME

12FFRBD  
Superhero x Monterey  
DOB: 19/9/18

BPI	382/67%	A2 Status	A12
Overall Type:	107	Mammary:	106
ASI:	184	Milk L:	281
kgF:	37	kgP:	21
Cell Count:	165	Daughter Fertility:	112
Breeder:	Winaview Holsteins, Warragul South, VIC		

*Kaarmona Denton-TWIN* **\$22.00**

## ENOUGHROPE

12FFRAK  
Bubba x Rubicon  
DOB: 7/8/18

BPI	333/66%	A2 Status	A12
Overall Type:	106	Mammary:	106
ASI:	140	Milk L:	97
kgF:	39	kgP:	12
Cell Count:	166	Daughter Fertility:	109
Breeder:	Kaarmona Holsteins, Kaarimba, VIC		

*Gain Mystical Guru*

## GURUBO

Mystic x Powerball P

BPI	342/67%
Overall Type:	99
ASI:	181
kgF:	16
Cell Count:	144
Breeder:	Genetics A

*Wilara Kobe-ET* **\$20.00**

## KOBE

12FFRBB  
Vador x Silver  
DOB: 11/8/18

BPI	333/67%	A2 Status	A12
Overall Type:	101	Mammary:	101
ASI:	185	Milk L:	321
kgF:	29	kgP:	24
Cell Count:	158	Daughter Fertility:	111
Breeder:	Wilara Holsteins, Tinamba, VIC		

*Illawambra Perseus Lager* **\$18.00**

## LAGER

12FFRAJ  
Perseus x Salvino  
DOB: 28/12/18

BPI	317/66%	A2 Status	A22
Overall Type:	101	Mammary:	104
ASI:	156	Milk L:	500
kgF:	20	kgP:	25
Cell Count:	144	Daughter Fertility:	115
Breeder:	Illawambra Holsteins, Barrengarry, VIC		

*Rengaw Maebull Orphan*

## ORPHAN

Maebull x Nardoo

BPI	335/68%
Overall Type:	103
ASI:	165
kgF:	30
Cell Count:	185
Breeder:	Rengaw H





# THE FUTURE

## to get excited about!

PRE-ORDER NOW FOR YOUR  
SPRING BREEDING PROGRAM

<b>DOB</b>	<b>\$18.00</b>
12FFRBE	DOB: 1/8/18
<b>A2 Status</b>	<b>A22</b>
Mammary:	100
Milk L:	663
kgP:	32
Daughter Fertility:	112
Australia	

Carenda Pilbara		\$24.00	
PILBARA		12FFRAE	
Perseus x Powerball P		DOB: 8/9/18	
BPI	352/65%	A2 Status	A22
Overall Type:	103	Mammary:	106
ASI:	181	Milk L:	390
kgF:	21	kgP:	26
Cell Count:	156	Daughter Fertility:	111
Breeder:	Carenda Holsteins, Boyanup, WA		

Bercar Ardent

\$22.00

ARDENT

12JJR23

David x Spiritual

DOB: 3/8/18

BPI	247/67%	A2 Status	A12
Overall Type:	107	Mammary:	108
ASI:	181	Milk L:	154
kgF:	31	kgP:	20
Cell Count:	123	Daughter Fertility:	98
Breeder:	Bercar Jerseys, Bamawm, VIC		

<b>45</b>	<b>\$24.00</b>
12FFRAN	DOB: 10/8/18
<b>A2 Status</b>	<b>A22</b>
Mammary:	102
Milk L:	-113
kgP:	14
Daughter Fertility:	110
Holsteins, Winnaleah, TAS	

Carenda Walpole P		\$22.00	
WALPOLE P		12FFRAF	
Perseus x Powerball P		DOB: 23/9/18	
BPI	358/66%	A2 Status	A12
Overall Type:	102	Mammary:	102
ASI:	179	Milk L:	-59
kgF:	21	kgP:	20
Cell Count:	162	Daughter Fertility:	115
Breeder:	Carenda Holsteins, Boyanup, WA		

Kaarmona Bazyli

\$22.00

BAZYLI

12JJR21

David x Navara

DOB: 14/8/18

BPI	250/67%	A2 Status	A11
Overall Type:	106	Mammary:	105
ASI:	156	Milk L:	-257
kgF:	30	kgP:	11
Cell Count:	115	Daughter Fertility:	102
Breeder:	Kaarmona Jerseys, Kaarimba, VIC		





# DAIRY BEEF SIRES

**BEEF SIRES SPECIALLY SELECTED TO  
WORK ON YOUR DAIRY HERDS**



**ANGUS**



**SPECKLE PARK**



**MURRAY GREY**



*Bulls selected on their exceptional calving ease, short gestation length, low birth weights and excellent growth traits. At Genetics Australia we want your calves born early, born easy and have the ability to grow quickly to maximise your profit.*

## PRODUCTION

PRODUCTION																																																																																																																																											
A2					Status					Nasis					Pedigree					BPI					Rel %					ASI					Protein (kg)					Protein %					Milk (L)					Fat (kg)					Fat %					Rel %					Daughters					Herds					RIP %					Overall Type					Mamm System					Rel %					Temperament					Likeability					Cell Count					Rel%					Dtr Fertility					Rel%					RRP					Pack Price					Sexed				
Code	A2	Status	Nasis	Pedigree	BPI	Rel %	ASI	Protein (kg)	Protein %	Milk (L)	Fat (kg)	Fat %	Rel %	Daughters	Herds	RIP %	Overall Type	Mamm System	Rel %	Milking Speed	Temperament	Likeability	Rel %	Cell Count	Rel%	Dtr Fertility	Rel%	RRP	Pack Price	Sexed																																																																																																													
DOUGGAN	A22	12JUP26		David x Murrur	280	65	202	26	0.36	275	27	0.24	76	0	0	0	99	103	55	102	102	104	62	147	69	101	54	\$22.00	\$20.00	\$50.00																																																																																																													
DOBSON	A12	12JUP25		David x Elton	252	65	193	24	0.32	270	30	0.29	75	0	0	0	103	104	55	102	103	105	61	120	68	99	53	\$20.00																																																																																																															
MR FERTILITY		12JUP29		Levigernes x Valerian	236	65	142	14	0.42	-159	16	0.47	78	0	0	0	103	101	52	100	101	103	64	122	69	108	48	\$20.00																																																																																																															
VALENBLAST	A22	12JUN16		Valentino x Sandblast	229	68	137	16	0.26	115	21	0.28	79	0	0	0	106	111	62	103	105	106	67	131	71	98	59	\$24.00																																																																																																															
JULSTAR	A22	12JU06		Sandblast x Larfaiot	226	79	187	23	0.33	228	28	0.29	93	79	29	8	108	107	66	100	103	103	83	111	79	98	70	\$22.00																																																																																																															
MANLY	A22	12JUP27		Glenferrie x Valentino	223	64	163	20	0.25	238	28	0.29	75	0	0	0	106	107	54	103	103	106	59	119	67	97	48	\$20.00																																																																																																															
ALGERNON	A22	12JM09		Navarian x Raceway	205	68	189	24	0.45	86	19	0.27	79	0	0	0	102	105	60	102	102	105	67	95	70	100	56	\$20.00																																																																																																															
LOKI	A22	12JUP28		Terrific x Navarian	202	63	156	19	0.40	14	15	0.27	75	0	0	0	101	102	50	102	102	104	59	109	68	101	50	\$18.00																																																																																																															
INVINCIBLE	A22	12JUN20		Hatman x Valentino	200	68	130	12	0.29	-48	24	0.50	79	0	0	0	109	112	61	104	105	107	67	111	70	97	57	\$18.00																																																																																																															
ASKN	A22	12JUK13		Valentino x Tbone	190	67	128	17	0.25	178	14	0.08	75	0	0	0	111	112	68	100	104	106	72	125	65	96	64	\$22.00	\$20.00	\$50.00																																																																																																													
AINSLEY	A22	12JM07		Brax x Konul	189	67	169	19	0.39	34	23	0.39	78	0	0	0	105	105	58	103	106	107	66	107	69	98	51	\$16.00																																																																																																															
HIPWOOD P	A22	12JR20		Oliver P x Brax	182	64	118	15	0.12	289	23	0.14	75	0	0	0	107	107	53	102	104	106	58	104	68	101	49	\$16.00																																																																																																															
VALIN	A22	12JMW03		Valentino x Navara	180	69	78	11	-0.01	340	19	0.01	79	0	0	0	113	115	63	103	105	107	67	130	70	96	60	\$20.00	\$20.00																																																																																																														
VALENTINO 7J1038	A22	80JUE12		Louie x Paramount	175	92	67	15	-0.14	617	15	-0.34	99	1692	169	17	113	114	98	103	107	108	98	138	98	96	95	\$24.00																																																																																																															
POLLEDGOLD P	A22	12JR22		Oliver P x Vanhalem	173	65	112	16	0.22	185	10	0.01	76	0	0	0	109	110	56	101	105	106	59	113	69	98	53	\$16.00																																																																																																															
VOYAGEDALE	A12	12JU04		Vanahlem x Valerian	173	65	149	29	0.10	713	12	-0.50	94	115	44	21	103	102	74	105	102	101	85	110	71	96	65	\$16.00																																																																																																															
TAHBILK	A22	12JU08		Vanahlem x Navara	173	85	134	12	0.40	-193	18	0.54	96	166	50	21	109	108	82	105	107	107	88	102	87	95	73	\$22.00		\$48.00																																																																																																													
GRIFF	A12	12JU01		Navarian x Vanahlem	173	80	141	23	0.19	429	12	-0.20	92	105	39	24	104	104	80	101	105	106	85	92	76	100	63	\$16.00																																																																																																															
VANBAYLEE	A22	12JUK06		Vanahlem x Tbone	173	76	161	20	0.41	23	15	0.26	87	59	19	33	107	104	72	99	105	104	80	110	71	96	65	\$18.00																																																																																																															
OLIVER P 7J1219	A22	80JH22		Valentino x Mik P	169	70	77	11	-0.06	398	24	0.05	75	23	5	20	111	110	75	101	105	106	66	120	81	99	78	\$24.00	\$20.00	\$50.00																																																																																																													
AUSSIEGOLD P	A22	12JH05		Elton x Vanahlem	150	89	100	9	0.30	-150	13	0.41	98	454	101	18	109	105	90	102	103	104	95	137	94	97	87	\$24.00	\$20.00	\$48.00																																																																																																													

## TYPE

TYPE	Code																																
	Over Type	Mam Syst	Stat	Bone Qual	Angl	Muzz Wid	Body Dep	Ches Wid	Pin Wid	Pin Set	Loin Strg	Foot Angl	Rear Set	Rear View	Uddr Txt	Uddr Dep	Fore Att	Rear Ath	Rear Attiv	Cent Lig	Teat Plac front	Teat Plac rear	Teat Leng	Rel	Survival	Rel%	Residual Survival	Rel%	Feedsave	Rel%	Heat Tolerance		
TYPE	99	103	101	97	97	99	100	103	100	102	101	101	96	99	101	101	105	103	99	100	102	102	102	95	55	108	51	105	57	-27	27	90	38
	103	104	101	99	102	103	99	102	101	107	107	101	99	102	103	102	104	101	102	102	104	104	98	55	110	50	108	56	-9	26	94	38	
	103	101	101	99	96	99	97	103	99	102	100	104	97	99	102	104	99	102	97	99	105	104	100	52	109	47	103	54	-9	26	97	38	
	106	111	105	97	104	104	100	99	109	107	107	101	99	101	105	100	103	108	111	105	108	103	95	62	110	58	106	63	-55	29	96	38	
	108	107	96	97	102	101	102	103	110	96	103	100	105	102	102	97	98	102	108	113	103	106	96	66	101	65	99	72	26	31	92	38	
	106	107	104	103	104	107	99	101	104	109	108	103	98	97	107	100	99	102	106	106	108	110	98	54	112	49	111	54	-53	26	92	38	
	102	105	101	98	102	102	102	106	101	101	98	98	100	96	103	96	99	103	105	102	105	106	102	60	108	55	110	60	-53	29	93	38	
	101	102	93	91	94	102	102	105	103	101	98	95	98	100	97	98	102	102	100	102	101	104	101	50	105	45	105	52	53	25	94	38	
	109	112	103	103	108	108	107	103	105	105	107	103	98	103	103	108	101	104	109	108	106	108	108	95	61	108	54	104	60	-80	29	91	38
	111	112	108	104	106	108	99	101	108	105	109	105	96	99	109	104	105	107	108	108	109	110	94	68	114	64	113	65	-97	32	94	38	
	105	105	107	97	102	105	109	106	106	94	98	96	99	101	103	99	103	105	108	100	98	97	97	58	104	51	102	57	-159	28	93	38	
	107	107	106	102	104	101	102	100	103	102	101	102	98	100	104	105	102	102	108	107	103	101	101	96	53	110	47	105	54	-89	26	106	38
	113	115	105	108	105	107	101	102	105	106	106	101	98	100	107	103	108	108	112	108	108	107	96	63	113	59	109	63	-77	30	92	38	
	113	114	109	104	108	108	99	102	107	106	107	108	94	101	108	104	107	109	115	105	105	106	94	98	114	93	111	96	-111	45	91	38	
	109	110	103	102	106	104	105	106	105	108	111	104	97	102	104	101	107	109	107	102	105	102	98	56	109	51	106	56	-97	27	93	38	
	103	102	99	98	103	98	102	97	90	92	93	106	95	104	103	102	94	103	102	105	103	106	97	74	103	69	103	75	22	35	94	38	
109	108	107	103	106	103	104	106	111	111	107	103	100	107	103	95	104	103	107	101	109	110	98	82	108	72	107	78	-139	39	95	38		
104	104	105	103	100	105	100	100	103	99	107	101	100	105	93	104	97	95	100	107	104	107	107	96	80	107	69	106	72	-68	38	92	38	
107	104	101	101	99	106	102	103	101	100	103	100	100	100	98	106	99	102	105	100	105	100	112	92	72	105	65	106	70	-38	34	95	38	
111	110	104	103	105	100	100	100	103	103	108	105	107	97	103	102	106	107	111	106	105	102	103	96	75	110	67	103	72	-68	36	96	38	
109	105	104	95	106	111	112	113	105	107	112	96	102	95	104	100	100	106	103	102	101	103	97	106	90	107	84	104	89	-166	42	93	38	

\*Prices are exclusive of GST and are effective from the 10th April 2019 and are subject to change without notice. Pack price, conditions apply - refer to page 1 of 2019 Dairy Sire Catalogue.



White Star 5281 Julian

# JULSTAR

Sandblast x Larfalot

A22

JULSTAR



**BPI** 226/79%

## Workability

Milking Speed	100
Temperament	103
Likeability	103
Rel%	83

## Health

Cell Count	111
Survival	101
Dtr Fertility	98
Gest Days	-0.5
Feed Saved	26

<b>Sire:</b>	Nowell Sandblast
<b>Dam:</b>	White Star 5281 VG87
<b>Herd Book</b>	653965
<b>NASIS:</b>	12JJJ06
<b>Breeder:</b>	White Star Jerseys, Noorat, VIC

**RRP \$22.00**

## Production

ASI	187
kgP	23
P%	0.33%
Milk	228
kgF	28
F%	0.29%
Rel%	93

## Overall Type 108 Mammary System 107

Stature	96	Rear Leg Rear View	102
Bone Quality	97	Udder Texture	102
Angularity	102	Udder Depth	97
Muzzle Width	101	Fore Attach	98
Body Depth	102	Rear Att Height	102
Chest Width	103	Rear Att Width	108
Pin Width	110	Centre Ligament	113
Pin Set	96	Teat Place Front	103
Loin Strength	103	Teat Place Rear	106
Foot Angle	100	Teat Length	96
Rear Leg Set	105		

79 dtrs 29 herds RIP 8%

15 dtrs 5 herds 66% rel

Beulah Mr Fertility

# MRFERTILITY

Levigenes x Valerian

MrFertility Sire, Levigenes



**BPI** 236/65%

## Workability

Milking Speed	100
Temperament	101
Likeability	103
Rel%	64

## Health

Cell Count	122
Survival	109
Dtr Fertility	108
Gest Days	-
Feed Saved	-9

<b>Sire:</b>	Broadlin Levigenes
<b>Dam:</b>	Beulah Val L Paint 3 VG83
<b>Herd Book</b>	1710138
<b>NASIS:</b>	12JJP29
<b>Breeder:</b>	Beulah Jerseys, Katunga, VIC

**RRP \$20.00  
AVAILABLE  
JUNE**

## Production

ASI	142
kgP	14
P%	0.42%
Milk	-159
kgF	16
F%	0.47%
Rel%	78

## Overall Type 103 Mammary System 101

Stature	101	Rear Leg Rear View	99
Bone Quality	99	Udder Texture	102
Angularity	96	Udder Depth	104
Muzzle Width	99	Fore Attach	99
Body Depth	97	Rear Att Height	102
Chest Width	103	Rear Att Width	97
Pin Width	99	Centre Ligament	99
Pin Set	102	Teat Place Front	105
Loin Strength	100	Teat Place Rear	104
Foot Angle	104	Teat Length	100
Rear Leg Set	97		

0 dtrs 0 herds RIP 0%

0 dtrs 0 herds 52% rel

Broadlin 179 Glenferrie-ET

# MANLY

Glenferrie x Valentino

A22

MANLY



**BPI** 223/64%

✓ **SEMEN Fertility**  
+0.68

## Workability

Milking Speed	103
Temperament	103
Likeability	106
Rel%	59

## Health

Cell Count	119
Survival	112
Dtr Fertility	97
Gest Days	-
Feed Saved	-53

<b>Sire:</b>	Kaarmona Glenferrie
<b>Dam:</b>	Broadlin Ilagay 3179 EX90
<b>Herd Book</b>	745217
<b>NASIS:</b>	12JJP27
<b>Breeder:</b>	Broadlin Jerseys, Lockington, VIC

**RRP \$20.00**

## Production

ASI	163
kgP	20
P%	0.25%
Milk	238
kgF	28
F%	0.29%
Rel%	75

## Overall Type 106 Mammary System 107

Stature	104	Rear Leg Rear View	97
Bone Quality	103	Udder Texture	107
Angularity	104	Udder Depth	100
Muzzle Width	107	Fore Attach	99
Body Depth	99	Rear Att Height	102
Chest Width	101	Rear Att Width	106
Pin Width	104	Centre Ligament	106
Pin Set	109	Teat Place Front	108
Loin Strength	108	Teat Place Rear	110
Foot Angle	103	Teat Length	98
Rear Leg Set	98		

0 dtrs 0 herds RIP 0%

0 dtrs 0 herds 54% rel

Kaarmona Loki

# LOKI

Terrific x Navarian

A22

LOKI



**BPI** 202/63%

✓ **SEMEN Fertility**  
+0.40

## Workability

Milking Speed	102
Temperament	102
Likeability	104
Rel%	59

## Health

Cell Count	109
Survival	105
Dtr Fertility	101
Gest Days	-
Feed Saved	53

<b>Sire:</b>	Lynbrook Terrific
<b>Dam:</b>	Kaarmona Navarian Lovelies 37 VG86
<b>Herd Book</b>	30968
<b>NASIS:</b>	12JJP28
<b>Breeder:</b>	Kaarmona Jerseys, Kaarimba, VIC

**RRP \$18.00**

## Production

ASI	156
kgP	19
P%	0.40%
Milk	14
kgF	15
F%	0.27%
Rel%	75

## Overall Type 101 Mammary System 102

Stature	93	Rear Leg Rear View	100
Bone Quality	91	Udder Texture	97
Angularity	94	Udder Depth	98
Muzzle Width	102	Fore Attach	102
Body Depth	102	Rear Att Height	102
Chest Width	105	Rear Att Width	100
Pin Width	103	Centre Ligament	102
Pin Set	101	Teat Place Front	101
Loin Strength	98	Teat Place Rear	104
Foot Angle	95	Teat Length	101
Rear Leg Set	98		

0 dtrs 0 herds RIP 0%

0 dtrs 0 herds 50% rel



White Star Douglas

# DOUGGAN

David x Murmur

A22

**BPI** 280/65%



**RRP \$22.00**  
**SEXED \$50.00**

## Production

0 dtrs 0 herds RIP 0%

ASI	kgP	P%	Milk	kgF	F%	Rel%
202	26	0.36%	275	27	0.24%	76

## Health Traits

## Calving

Cell Count	Survival	Res Survival	Dtr Fertility	Gestation Days
147 69% Rel	108 51% Rel	105 57% Rel	101 54% Rel	-

## Workability

62% rel

## Feed Efficiency

Milking Speed	Temperament	Likeability	Liveweight	Feed Saved
102	102	104	102 58% rel	-27 27% rel

## Type

Overall Type	99	Mammary System	103
Stature	101	Udder Texture	101
Bone Quality	97	Udder Depth	101
Angularity	97	Fore Attach	105
Muzzle Width	99	Rear Att Height	103
Body Depth	100	Rear Att Width	99
Chest Width	103	Centre Ligament	100
Pin Width	100	Teat Place Front	102
Pin Set	102	Teat Place Rear	102
Loin Strength	101	Teat Length	95
Foot Angle	101		
Rear Leg Set	96		
Rear Leg Rear View	99		

0 dtrs 0 herds 55% rel

<b>Sire:</b>	Sunset Canyon David
<b>Dam:</b>	White Star 5586 GP81
<b>Herd Book:</b>	743169
<b>NASIS:</b>	12JJP26
<b>Breeder:</b>	White Star Jerseys, Noorat, VIC



DOUGGAN



Broadlin Hilux

# ALGERNON

Navarian x Raceway

A22

**BPI** 205/68%



**RRP \$20.00**

## Production

0 dtrs 0 herds RIP 0%

ASI	kgP	P%	Milk	kgF	F%	Rel%
189	24	0.45%	86	19	0.27%	79

## Health Traits

## Calving

Cell Count	Survival	Res Survival	Dtr Fertility	Gestation Days
95 70% Rel	108 55% Rel	110 60% Rel	100 56% Rel	-

## Workability

67% rel

## Feed Efficiency

Milking Speed	Temperament	Likeability	Liveweight	Feed Saved
102	102	105	103 62% rel	-53 29% rel

## Type

Overall Type	102	Mammary System	105
Stature	101	Udder Texture	103
Bone Quality	98	Udder Depth	96
Angularity	102	Fore Attach	99
Muzzle Width	102	Rear Att Height	103
Body Depth	102	Rear Att Width	105
Chest Width	106	Centre Ligament	102
Pin Width	101	Teat Place Front	105
Pin Set	101	Teat Place Rear	106
Loin Strength	98	Teat Length	102
Foot Angle	98		
Rear Leg Set	100		
Rear Leg Rear View	96		

0 dtrs 0 herds 60% rel

<b>Sire:</b>	Colnarco Navarian
<b>Dam:</b>	Broadlin Vanessa 2950 EX93
<b>Herd Book:</b>	710250
<b>NASIS:</b>	12JJM09
<b>Breeder:</b>	Broadlin Jerseys, Lockington, VIC



Algernon Dam, Broadlin Vanessa 2950

All Lynns Louie Valentino 7J1038

# VALENTINO

Louie x Paramount A22



**BPI** 175/92%

Workability	
Milking Speed	103
Temperament	107
Likeability	108
Rel%	98

Health	
Cell Count	138
Survival	114
Dtr Fertility	96
Gest Days	-0.8
Feed Saved	-111

<b>Sire:</b>	BHF-SSF Parade Louie
<b>Dam:</b>	D&E Paramount Violet, EX90
<b>Herd Book</b>	JEUSA000116279413
<b>NASIS:</b>	80JJE12
<b>Source:</b>	World Wide Sires, USA

**RRP \$24.00**

Production	
ASI	67
kgP	15
P%	-0.14%
Milk	617
kgF	15
F%	-0.34%
Rel%	99

Overall Type 113		Mammary System 114	
Stature	109	Rear Leg Rear View	101
Bone Quality	104	Udder Texture	108
Angularity	108	Udder Depth	104
Muzzle Width	108	Fore Attach	107
Body Depth	99	Rear Att Height	109
Chest Width	102	Rear Att Width	115
Pin Width	107	Centre Ligament	105
Pin Set	106	Teat Place Front	105
Loin Strength	107	Teat Place Rear	106
Foot Angle	108	Teat Length	94
Rear Leg Set	94		

1692 dtrs 169 herds RIP 17%

521 dtrs 60 herds 98% rel

Dutch Hollow Oliver P 7J1219

# OLIVER P

Valentino x Mik P A22



**BPI** 169/70%

Workability	
Milking Speed	101
Temperament	105
Likeability	106
Rel%	66

Health	
Cell Count	120
Survival	110
Dtr Fertility	99
Gest Days	-
Feed Saved	-68

<b>Sire:</b>	All Lynns Louie Valentino-ET
<b>Dam:</b>	Dutch Hollow Mik Olive P, EX92
<b>Herd Book</b>	JEUSA00067184544
<b>NASIS:</b>	80JJH22
<b>Source:</b>	World Wide Sires, USA

**RRP \$24.00**  
**SEXED \$50.00**

Production	
ASI	77
kgP	11
P%	-0.06%
Milk	398
kgF	24
F%	0.05%
Rel%	75

Overall Type 111		Mammary System 110	
Stature	104	Rear Leg Rear View	103
Bone Quality	103	Udder Texture	102
Angularity	105	Udder Depth	106
Muzzle Width	100	Fore Attach	107
Body Depth	100	Rear Att Height	111
Chest Width	103	Rear Att Width	106
Pin Width	103	Centre Ligament	105
Pin Set	108	Teat Place Front	102
Loin Strength	105	Teat Place Rear	103
Foot Angle	107	Teat Length	96
Rear Leg Set	97		

23 dtrs 5 herds RIP 20%

8 dtrs 2 herds 75% rel

Wallacedale Mels Voyage

# VOYAGEDALE

Vanahlem x Valerian A12



**BPI** 173/65%

Workability	
Milking Speed	100
Temperament	102
Likeability	101
Rel%	85

Health	
Cell Count	123
Survival	103
Dtr Fertility	98
Gest Days	-0.06
Feed Saved	22

<b>Sire:</b>	Pannoo Abe Vanahlem
<b>Dam:</b>	Wallacedale Vals Melanie EX92
<b>Herd Book</b>	636803
<b>NASIS:</b>	12JJJ04
<b>Breeder:</b>	Wallacedale Jerseys, Poowong North, VIC

**RRP \$16.00**

Production	
ASI	149
kgP	29
P%	0.10%
Milk	713
kgF	12
F%	-0.50%
Rel%	94

Overall Type 103		Mammary System 102	
Stature	99	Rear Leg Rear View	95
Bone Quality	98	Udder Texture	104
Angularity	103	Udder Depth	102
Muzzle Width	98	Fore Attach	94
Body Depth	0	Rear Att Height	103
Chest Width	102	Rear Att Width	102
Pin Width	97	Centre Ligament	105
Pin Set	90	Teat Place Front	103
Loin Strength	92	Teat Place Rear	106
Foot Angle	93	Teat Length	97
Rear Leg Set	106		

115 dtrs 44 herds RIP 21%

32 dtrs 14 herds 74% rel

White Star Valenblast

# VALENBLAST

Valentino x Sandblast A22



**BPI** 229/68%

✓ **SEMEN Fertility +0.89**

Workability	
Milking Speed	103
Temperament	105
Likeability	106
Rel%	67

Health	
Cell Count	131
Survival	110
Dtr Fertility	98
Gest Days	-
Feed Saved	-55

<b>Sire:</b>	All Lynns Louie Valentino-ET
<b>Dam:</b>	White Star 5464 GP81
<b>Herd Book</b>	724522
<b>NASIS:</b>	12JJN16
<b>Breeder:</b>	White Star Jerseys, Noorat, VIC

**RRP \$24.00**

Production	
ASI	137
kgP	16
P%	0.26%
Milk	115
kgF	21
F%	0.28%
Rel%	79

Overall Type 106		Mammary System 111	
Stature	105	Rear Leg Rear View	101
Bone Quality	97	Udder Texture	105
Angularity	104	Udder Depth	100
Muzzle Width	104	Fore Attach	103
Body Depth	100	Rear Att Height	108
Chest Width	99	Rear Att Width	111
Pin Width	109	Centre Ligament	105
Pin Set	107	Teat Place Front	108
Loin Strength	107	Teat Place Rear	103
Foot Angle	101	Teat Length	95
Rear Leg Set	99		

0 dtrs 0 herds RIP 0%

0 dtrs 0 herds 62% rel

Brookbora Valentino Askn

# ASKN

Valentino x Tbone

A22

<b>BPI</b>	<b>190/67%</b>	  	<b>RRP \$22.00</b> <b>SEXED \$50.00</b>
------------	----------------	---	--

Production							0 dtrs 0 herds RIP 0%
ASI	kgP	P%	Milk	kgF	F%	Rel%	
128	17	0.25%	178	14	0.08%	75	

Health Traits				Calving
Cell Count	Survival	Res Survival	Dtr Fertility	Gestation Days
125 65% Rel	114 64% Rel	113 65% Rel	96 64% Rel	-

Workability			72% rel	Feed Efficiency	
Milking Speed	Temperament	Likeability		Liveweight	Feed Saved
100	104	106		105 69% rel	-97 32% rel

Type			
Overall Type	111	Mammary System	112
Stature	108	Udder Texture	109
Bone Quality	104	Udder Depth	104
Angularity	106	Fore Attach	105
Muzzle Width	108	Rear Att Height	107
Body Depth	99	Rear Att Width	108
Chest Width	101	Centre Ligament	108
Pin Width	108	Teat Place Front	109
Pin Set	105	Teat Place Rear	110
Loin Strength	109	Teat Length	94
Foot Angle	105		
Rear Leg Set	96		
Rear Leg Rear View	99		

<b>Sire:</b>	All Lynns Valentino-ET
<b>Dam:</b>	Brookbora Standard Lady 225 EX91
<b>Herd Book:</b>	666936
<b>NASIS:</b>	12JJK13
<b>Breeder:</b>	Brookbora Jerseys, Tennyson, VIC



Askn Daughter, Brookbora Standard Lady 306

Kings View Valin 4697

# VALIN

Valentino x Navara

A22

<b>BPI</b>	<b>180/69%</b>	  	<b>RRP \$20.00</b>
------------	----------------	---	--------------------

Production							0 dtrs 0 herds RIP 0%
ASI	kgP	P%	Milk	kgF	F%	Rel%	
78	11	-0.01%	340	19	0.01%	79	

Health Traits				Calving
Cell Count	Survival	Res Survival	Dtr Fertility	Gestation Days
130 70% Rel	113 59% Rel	109 63% Rel	96 60% Rel	-

Workability			67% rel	Feed Efficiency	
Milking Speed	Temperament	Likeability		Liveweight	Feed Saved
103	105	107		104 69% rel	-76 30% rel

Type			
Overall Type	113	Mammary System	115
Stature	105	Udder Texture	107
Bone Quality	108	Udder Depth	103
Angularity	105	Fore Attach	108
Muzzle Width	107	Rear Att Height	108
Body Depth	101	Rear Att Width	112
Chest Width	102	Centre Ligament	108
Pin Width	105	Teat Place Front	108
Pin Set	106	Teat Place Rear	107
Loin Strength	106	Teat Length	96
Foot Angle	101		
Rear Leg Set	98		
Rear Leg Rear View	100		

<b>Sire:</b>	All Lynns Louie Valentino-ET
<b>Dam:</b>	Kings View Aileen 105 EX90
<b>Herd Book:</b>	703151
<b>NASIS:</b>	12JJM03
<b>Breeder:</b>	Kings View Jerseys, Nar Nar Goon, VIC

0 dtrs 0 herds 63% rel

Valin Daughter, Kingsview Aileen 181





Broadlin 565 Oliver 3 P

# POLLEDGOLD PP

Oliver P x Vanhalem

A22

Polledgold P Dam, Broadlin Constance 2565

**BPI** 173/65%

## Workability

Milking Speed	101
Temperament	105
Likeability	106
Rel%	59

## Health

Cell Count	113
Survival	109
Dtr Fertility	98
Gest Days	-
Feed Saved	-97

<b>Sire:</b>	Dutch Hollow Oliver P
<b>Dam:</b>	Broadlin Constance 2565 P EX92
<b>Herd Book</b>	1812528
<b>NASIS:</b>	12JJR22
<b>Breeder:</b>	Broadlin Jerseys, Lockington, VIC

**RRP \$16.00**  
**AVAILABLE**  
**JUNE**

## Production

ASI	112
kgP	16
P%	0.22%
Milk	185
kgF	10
F%	0.01%
Rel%	76

## Overall Type 109 Mammary System 110

Stature	103	Rear Leg Rear View	102
Bone Quality	102	Udder Texture	104
Angularity	106	Udder Depth	101
Muzzle Width	104	Fore Attach	107
Body Depth	105	Rear Att Height	109
Chest Width	106	Rear Att Width	107
Pin Width	105	Centre Ligament	102
Pin Set	108	Teat Place Front	105
Loin Strength	111	Teat Place Rear	102
Foot Angle	104	Teat Length	98
Rear Leg Set	97		

0 dtrs 0 herds RIP 0%

0 dtrs 0 herds 56% rel

Loxleigh Hatman Vince 5963

# INVINCIBLE

Hatman x Valentino

A22

Invincible Dam, Loxleigh Valentino Vanessa 5408

**BPI** 200/68%

## Workability

Milking Speed	104
Temperament	105
Likeability	107
Rel%	67

## Health

Cell Count	111
Survival	108
Dtr Fertility	97
Gest Days	-
Feed Saved	-80

<b>Sire:</b>	Broadlin Hatman
<b>Dam:</b>	Loxleigh Valentino Vanessa 5408 EX90
<b>Herd Book</b>	727395
<b>NASIS:</b>	12JJN20
<b>Breeder:</b>	Loxleigh Jerseys, Tallygaroopna, VIC

**RRP \$18.00**

## Production

ASI	130
kgP	12
P%	0.29%
Milk	-48
kgF	24
F%	0.50%
Rel%	79

## Overall Type 109 Mammary System 112

Stature	103	Rear Leg Rear View	103
Bone Quality	103	Udder Texture	108
Angularity	108	Udder Depth	101
Muzzle Width	108	Fore Attach	104
Body Depth	107	Rear Att Height	109
Chest Width	103	Rear Att Width	108
Pin Width	105	Centre Ligament	106
Pin Set	105	Teat Place Front	108
Loin Strength	107	Teat Place Rear	108
Foot Angle	103	Teat Length	95
Rear Leg Set	98		

0 dtrs 0 herds RIP 0%

0 dtrs 0 herds 61% rel

Beulah Hipwood

# HIPWOOD P

Oliver P x Brax

Oliver P Daughter, Logan Oliver P Glitter

**BPI** 182/64%

## Workability

Milking Speed	102
Temperament	104
Likeability	106
Rel%	58

## Health

Cell Count	104
Survival	110
Dtr Fertility	101
Gest Days	-
Feed Saved	-89

<b>Sire:</b>	Dutch Hollow Oliver P
<b>Dam:</b>	Beulah Brax V Vanessa
<b>Herd Book</b>	36725
<b>NASIS:</b>	12JJR20
<b>Breeder:</b>	Beulah Jerseys, Katunga, VIC

**RRP \$16.00**  
**AVAILABLE**  
**JUNE**

## Production

ASI	118
kgP	15
P%	0.12%
Milk	289
kgF	23
F%	0.14%
Rel%	75

## Overall Type 107 Mammary System 107

Stature	106	Rear Leg Rear View	104
Bone Quality	102	Udder Texture	104
Angularity	104	Udder Depth	105
Muzzle Width	101	Fore Attach	102
Body Depth	102	Rear Att Height	108
Chest Width	100	Rear Att Width	107
Pin Width	103	Centre Ligament	103
Pin Set	102	Teat Place Front	101
Loin Strength	101	Teat Place Rear	101
Foot Angle	102	Teat Length	96
Rear Leg Set	98		

0 dtrs 0 herds RIP 0%

0 dtrs 0 herds 53% rel

White Star Doorman

# DOBSON

David x Elton

A12

DOBSON

**BPI** 252/65% **SEMEN Fertility**  
**+0.62**

## Workability

Milking Speed	102
Temperament	103
Likeability	105
Rel%	61

## Health

Cell Count	120
Survival	110
Dtr Fertility	99
Gest Days	-
Feed Saved	-9

<b>Sire:</b>	Sunset Canyon David
<b>Dam:</b>	White Star 5578 GP83
<b>Herd Book</b>	743168
<b>NASIS:</b>	12JJP25
<b>Breeder:</b>	White Star Jerseys, Noorat, VIC

**RRP \$20.00**

## Production

ASI	193
kgP	24
P%	0.32%
Milk	270
kgF	30
F%	0.29%
Rel%	75

## Overall Type 103 Mammary System 104

Stature	101	Rear Leg Rear View	102
Bone Quality	99	Udder Texture	103
Angularity	102	Udder Depth	102
Muzzle Width	103	Fore Attach	104
Body Depth	99	Rear Att Height	101
Chest Width	102	Rear Att Width	102
Pin Width	101	Centre Ligament	102
Pin Set	107	Teat Place Front	104
Loin Strength	107	Teat Place Rear	104
Foot Angle	101	Teat Length	98
Rear Leg Set	99		

0 dtrs 0 herds RIP 0%

0 dtrs 0 herds 55% rel

Broadlin Aussiegold P - ET

# AUSSIEGOLD P

Elton x Vanahlem

A22

**BPI** 150/89%



**RRP \$24.00**  
**SEXED \$48.00**

## Production

454 dtrs 101 herds RIP 18%

ASI	kgP	P%	Milk	kgF	F%	Rel%
100	9	0.30%	-150	13	0.41%	98

## Health Traits

## Calving

Cell Count	Survival	Res Survival	Dtr Fertility	Gestation Days
137 94% Rel	107 84% Rel	104 89% Rel	97 87% Rel	-0.7

## Workability

95% rel

## Feed Efficiency

Milking Speed	Temperament	Likeability	Liveweight	Feed Saved
102	103	104	109 92% rel	-166 42% rel

## Type

Overall Type	109	Mammary System	105
Stature	104	Udder Texture	104
Bone Quality	95	Udder Depth	100
Angularity	106	Fore Attach	106
Muzzle Width	111	Rear Att Height	103
Body Depth	112	Rear Att Width	102
Chest Width	113	Centre Ligament	101
Pin Width	105	Teat Place Front	103
Pin Set	107	Teat Place Rear	97
Loin Strength	112	Teat Length	106
Foot Angle	96		
Rear Leg Set	102		
Rear Leg Rear View	95		

56 dtrs 21 herds 90% rel

**Sire:** Cairnbrae Jaces Elton  
**Dam:** Broadlin Constance 2565 P EX92  
**Herd Book:** 622118  
**NASIS:** 12JJH05  
**Breeder:** Broadlin Jerseys, Lockington, VIC

✓ **SEMEN Fertility**  
**+2.59**

**Pack Price**  
**\$20.00**



Aussiegold Daughter, Broadlin Maid 3047, Broadlin Jerseys

Beulah Tahbilk

# TAHBILK

Vanahlem x Navara

A22

**BPI** 173/85%



**RRP \$22.00**  
**SEXED \$48.00**

## Production

166 dtrs 50 herds RIP 21%

ASI	kgP	P%	Milk	kgF	F%	Rel%
134	12	0.40%	-193	18	0.54%	96

## Health Traits

## Calving

Cell Count	Survival	Res Survival	Dtr Fertility	Gestation Days
102 87% Rel	108 72% Rel	107 78% Rel	95 73% Rel	2.7

## Workability

88% rel

## Feed Efficiency

Milking Speed	Temperament	Likeability	Liveweight	Feed Saved
105	107	107	108 85% rel	-139 39% rel

## Type

Overall Type	109	Mammary System	108
Stature	107	Udder Texture	103
Bone Quality	103	Udder Depth	95
Angularity	106	Fore Attach	104
Muzzle Width	103	Rear Att Height	103
Body Depth	104	Rear Att Width	107
Chest Width	106	Centre Ligament	101
Pin Width	111	Teat Place Front	109
Pin Set	111	Teat Place Rear	110
Loin Strength	107	Teat Length	98
Foot Angle	103		
Rear Leg Set	100		
Rear Leg Rear View	107		

128 dtrs 38 herds 82% rel

**Sire:** Pannoo Abe Vanahlem  
**Dam:** Beulah Navara M Poppins VG85  
**Herd Book:** 654869  
**NASIS:** 12JJJ08  
**Breeder:** Beulah Jerseys, Katunga, VIC

✓ **SEMEN Fertility**  
**+0.60**



Tahbilk Daughter, Glenjuristan Tahbilk Ivory, Moscript Family



## Aussie Red Team / April 2019

PRODUCTION																			
Code	A2 Status	Nasis	Pedigree	Bpl	Rel %	ASI	Protein (kg)	Protein %	Milk (L)	Fat (kg)	Fat %	Rel %	Daughters	Herds	RIP %	Overall Type	Mamm System	Rel %	Milking Speed
PROVEN																			
ARB CYGNET	A12	12UJ04	Foske x Olistad	239	79	150	28	0.06	912	27	-0.17	92	82	33	20	101	106	69	104
ARB SCAREBEAR	A12	12UH15	Foske x Andersta	213	81	166	24	0.17	566	32	0.11	93	86	33	16	92	98	77	105
ARBABBOTT	A22	12UJ03	Tosikko x Fyn Aks	179	79	240	33	0.37	511	34	0.17	92	84	27	16	97	97	69	101
FUTUREGEN																			
ARB GLACIER	A12	12UJ08	Foske x Tosikko	278	50	229	30	0.30	526	40	0.26	55	2	2	100	103	105	48	103
ARB YOGIBEAR	A22	12UP07	Arb Scarebear x RDavid	235	44	184	27	0.19	653	33	0.08	50	0	0	0	94	97	36	103
ARB OSCAR	A22	12UJ05	Foske x Tosikko	203	49	168	24	0.21	460	28	0.11	54	0	0	0	103	104	48	101
ARB ISAAC	A22	12UJ03	Tosikko x Arb Bon Jovi	202	49	165	25	0.23	482	22	0.02	54	0	0	0	100	102	45	100
ARB PONGA	A22	12UP06	Enger x Foske	200	34	144	17	0.16	330	32	0.27	38	0	0	0	99	100	30	101
ARB JACKO	A12	12UJ04	Foske x Bobdown	192	49	168	24	0.27	384	21	0.06	54	0	0	0	102	101	46	101
ARB CAESAR	A22	12UP04	Aoteaaroa x Kenneth	180	36	139	20	0.15	447	26	0.10	42	0	0	0	97	96	25	102
ARB EDDIE	A12	12UP08	Fonseca x Tosikko	179	41	115	17	0.14	348	19	0.05	48	0	0	0	99	101	31	101
ARB NINJAGO	A22	12UJ03	Valpas x Foske	161	46	145	18	0.11	438	37	0.27	52	0	0	0	102	98	41	101
FUTUREGEN																			
ARB GLACIER	A12	12UJ08	Foske x Tosikko	278	50	229	30	0.30	526	40	0.26	55	2	2	100	103	105	48	103
ARB YOGIBEAR	A22	12UP07	Arb Scarebear x RDavid	235	44	184	27	0.19	653	33	0.08	50	0	0	0	94	97	36	103
ARB OSCAR	A22	12UJ05	Foske x Tosikko	203	49	168	24	0.21	460	28	0.11	54	0	0	0	103	104	48	101
ARB ISAAC	A22	12UJ03	Tosikko x Arb Bon Jovi	202	49	165	25	0.23	482	22	0.02	54	0	0	0	100	102	45	100
ARB PONGA	A22	12UP06	Enger x Foske	200	34	144	17	0.16	330	32	0.27	38	0	0	0	99	100	30	101
ARB JACKO	A12	12UJ04	Foske x Bobdown	192	49	168	24	0.27	384	21	0.06	54	0	0	0	102	101	46	101
ARB CAESAR	A22	12UP04	Aoteaaroa x Kenneth	180	36	139	20	0.15	447	26	0.10	42	0	0	0	97	96	25	102
ARB EDDIE	A12	12UP08	Fonseca x Tosikko	179	41	115	17	0.14	348	19	0.05	48	0	0	0	99	101	31	101
ARB NINJAGO	A22	12UJ03	Valpas x Foske	161	46	145	18	0.11	438	37	0.27	52	0	0	0	102	98	41	101
FUTUREGEN																			
ARB GLACIER	A12	12UJ08	Foske x Tosikko	278	50	229	30	0.30	526	40	0.26	55	2	2	100	103	105	48	103
ARB YOGIBEAR	A22	12UP07	Arb Scarebear x RDavid	235	44	184	27	0.19	653	33	0.08	50	0	0	0	94	97	36	103
ARB OSCAR	A22	12UJ05	Foske x Tosikko	203	49	168	24	0.21	460	28	0.11	54	0	0	0	103	104	48	101
ARB ISAAC	A22	12UJ03	Tosikko x Arb Bon Jovi	202	49	165	25	0.23	482	22	0.02	54	0	0	0	100	102	45	100
ARB PONGA	A22	12UP06	Enger x Foske	200	34	144	17	0.16	330	32	0.27	38	0	0	0	99	100	30	101
ARB JACKO	A12	12UJ04	Foske x Bobdown	192	49	168	24	0.27	384	21	0.06	54	0	0	0	102	101	46	101
ARB CAESAR	A22	12UP04	Aoteaaroa x Kenneth	180	36	139	20	0.15	447	26	0.10	42	0	0	0	97	96	25	102
ARB EDDIE	A12	12UP08	Fonseca x Tosikko	179	41	115	17	0.14	348	19	0.05	48	0	0	0	99	101	31	101
ARB NINJAGO	A22	12UJ03	Valpas x Foske	161	46	145	18	0.11	438	37	0.27	52	0	0	0	102	98	41	101

TYPE																															
Code	Over Type	Mam Syst	Stat	Bone Qual	Angl	Muzz Wid	Body Dep	Ches Wid	Pin Wid	Pin Set	Loin Strg	Foot Angl	Rear Set	Rear View	Uddr Txt	Uddr Dep	Fore Ait	Rear Athw	Cent Lig	Teat Plac front	Teat Plac rear	Teat Leng	Rel	Survival	Rel%	Residual Survival	Rel%	Feedsave	Rel%		
PROVEN																															
	ARB CYGNET	101	106	98	92	97	104	105	99	105	110	110	104	102	97	94	95	99	102	104	113	104	89	69	105	60	99	68	6	33	
	ARB SCAREBEAR	92	98	96	104	99	101	99	98	101	102	100	98	114	96	103	93	92	86	102	103	104	94	77	102	66	102	72	68	37	
	ARBABBOTT	97	97	91	95	101	104	100	102	96	98	100	97	93	98	99	93	101	101	103	98	87	99	61	101	107	69	95	33		
FUTUREGEN																															
	ARB GLACIER	103	105	98	94	105	105	106	105	103	105	101	102	102	101	100	97	102	98	106	103	107	97	48	105	44	102	47	-24	23	
	ARB YOGIBEAR	94	97	99	103	100	100	98	98	99	102	100	99	108	97	101	96	96	91	103	99	102	96	36	103	31	102	36	37	18	
	ARB OSCAR	103	104	102	95	103	104	106	105	104	103	100	102	104	97	102	99	104	97	106	103	102	96	48	104	44	100	46	-80	23	
	ARB ISAAC	100	102	97	99	102	104	102	100	98	93	98	101	101	94	101	99	102	101	105	101	95	101	98	45	101	43	100	46	29	21
	ARB PONGA	99	100	103	98	100	100	101	102	106	107	100	100	104	98	99	97	102	95	100	101	101	99	100	30	102	27	97	-49	16	
	ARB JACKO	102	101	102	98	104	105	104	103	103	107	105	99	106	99	102	96	97	96	103	103	105	101	98	46	104	44	102	47	-53	22
	ARB CAESAR	97	96	98	101	95	102	100	98	93	100	96	100	103	96	98	98	98	97	94	96	101	98	101	25	101	23	99	27	33	12
	ARB EDDIE	99	101	101	98	99	100	99	103	104	99	97	103	99	99	100	104	105	102	100	99	96	98	98	31	103	29	98	34	-15	16
	ARB NINJAGO	102	98	105	99	103	103	103	104	104	102	97	102	104	101	99	101	101	95	94	102	103	102	96	41	103	36	98	41	-93	20

Beaulands Glacier

# ARBGLACIER

Foske x Tosikko A12

ARBGLACIER Dam, Beaulands Tosikko Rosie 3



**BPI** 278/50%

✓ **SEMEN Fertility**  
+2.03

## Workability

Milking Speed	103
Temperament	101
Likeability	104
Rel%	51

## Health

Cell Count	116
Survival	105
Dtr Fertility	100
Gest Days	-
Feed Saved	-24

<b>Sire:</b>	V Foske
<b>Dam:</b>	Beaulands Tosikko Rosie 3
<b>Herd Book</b>	25865
<b>NASIS:</b>	12UUL08
<b>Breeder:</b>	Beaulands Aussie Reds, Nowra, NSW

**RRP \$22.00**

## Production

ASI	229
kgP	30
P%	0.30%
Milk	526
kgF	40
F%	0.26%
Rel%	55

## Overall Type 103 Mammary System 105

Stature	98	Rear Leg Rear View	101
Bone Quality	94	Udder Texture	100
Angularity	105	Udder Depth	97
Muzzle Width	105	Fore Attach	102
Body Depth	106	Rear Att Height	98
Chest Width	105	Rear Att Width	106
Pin Width	103	Centre Ligament	103
Pin Set	105	Teat Place Front	107
Loin Strength	101	Teat Place Rear	102
Foot Angle	102	Teat Length	97
Rear Leg Set	102		

2 dtrs 2 herds RIP 100%

48% rel

Johville Park Scarebear

# ARBSCAREBEAR

Foske x Andersta A12

ARBSCAREBEAR



**BPI** 213/81%

✓ **SEMEN Fertility**  
+0.04

## Workability

Milking Speed	105
Temperament	102
Likeability	105
Rel%	85

## Health

Cell Count	118
Survival	102
Dtr Fertility	102
Gest Days	-1.18
Feed Saved	68

<b>Sire:</b>	V Foske
<b>Dam:</b>	Johville Park Krissy 708
<b>Herd Book</b>	24934
<b>NASIS:</b>	12UUH15
<b>Breeder:</b>	Johville Park Aussie Reds, Leitchville, VIC

**RRP \$20.00**  
**SEXED \$48.00**

## Production

ASI	166
kgP	24
P%	0.17%
Milk	566
kgF	32
F%	0.11%
Rel%	93

## Overall Type 92 Mammary System 98

Stature	96	Rear Leg Rear View	96
Bone Quality	104	Udder Texture	103
Angularity	99	Udder Depth	93
Muzzle Width	101	Fore Attach	92
Body Depth	99	Rear Att Height	86
Chest Width	98	Rear Att Width	102
Pin Width	101	Centre Ligament	103
Pin Set	102	Teat Place Front	112
Loin Strength	100	Teat Place Rear	104
Foot Angle	98	Teat Length	94
Rear Leg Set	114		

86 dtrs 33 herds RIP 16%

46 dtrs 15 herds 77% rel

Beaulands Abbott

# ARBABBOTT

Tosikko x Fyn Aks A22

ARBABBOTT



**BPI** 179/79%

✓ **SEMEN Fertility**  
+0.51

## Workability

Milking Speed	101
Temperament	101
Likeability	104
Rel%	82

## Health

Cell Count	63
Survival	101
Dtr Fertility	97
Gest Days	-0.43
Feed Saved	95

<b>Sire:</b>	Asmo Tosikko
<b>Dam:</b>	Beaulands Aks Rosie 2
<b>Herd Book</b>	25106
<b>NASIS:</b>	12UUJ03
<b>Breeder:</b>	Beaulands Aussie Reds, Nowra, NSW

**RRP \$20.00**  
**SEXED \$40.00**

## Production

ASI	240
kgP	33
P%	0.37%
Milk	511
kgF	34
F%	0.17%
Rel%	92

## Overall Type 97 Mammary System 97

Stature	91	Rear Leg Rear View	98
Bone Quality	95	Udder Texture	99
Angularity	101	Udder Depth	93
Muzzle Width	104	Fore Attach	101
Body Depth	100	Rear Att Height	101
Chest Width	102	Rear Att Width	103
Pin Width	96	Centre Ligament	98
Pin Set	98	Teat Place Front	87
Loin Strength	100	Teat Place Rear	88
Foot Angle	97	Teat Length	99
Rear Leg Set	93		

84 dtrs 27 herds RIP 16%

23 dtrs 9 herds 69% rel

Beaulands Swannies

# ARBCYGNET

Foske x Olstad A12

ARBCYGNET



**BPI** 239/79%

✓ **SEMEN Fertility**  
+0.51

## Workability

Milking Speed	104
Temperament	103
Likeability	106
Rel%	82

## Health

Cell Count	117
Survival	105
Dtr Fertility	102
Gest Days	-0.44
Feed Saved	6

<b>Sire:</b>	V Foske
<b>Dam:</b>	Beaulands Olstad Birdie VG86
<b>Herd Book</b>	21177
<b>NASIS:</b>	12UUJ04
<b>Breeder:</b>	Beaulands Aussie Reds, Nowra, NSW

**RRP \$22.00**

## Production

ASI	150
kgP	28
P%	0.06%
Milk	912
kgF	27
F%	-0.17%
Rel%	92

## Overall Type 101 Mammary System 106

Stature	98	Rear Leg Rear View	97
Bone Quality	92	Udder Texture	94
Angularity	97	Udder Depth	95
Muzzle Width	104	Fore Attach	99
Body Depth	105	Rear Att Height	102
Chest Width	99	Rear Att Width	104
Pin Width	105	Centre Ligament	104
Pin Set	110	Teat Place Front	113
Loin Strength	110	Teat Place Rear	104
Foot Angle	104	Teat Length	89
Rear Leg Set	102		

82 dtrs 33 herds RIP 20%

24 dtrs 11 herds 69% rel



Orana Oscar

# ARBOSCAR

Foske x Tosikko

A22



ARBOSCAR



**BPI** 203/49%



Workability	
Milking Speed	101
Temperament	102
Likeability	103
Rel%	49

Health	
Cell Count	116
Survival	104
Dtr Fertility	101
Gest Days	-
Feed Saved	-80

<b>Sire:</b>	V Foske
<b>Dam:</b>	Orana Atosikko Rose
<b>Herd Book</b>	26901
<b>NASIS:</b>	12UUL05
<b>Breeder:</b>	Orana Aussie Reds, Bena VIC

RRP \$18.00

Production	
ASI	168
kgP	24
P%	0.21%
Milk	460
kgF	28
F%	0.11%
Rel%	54

Overall Type 103		Mammary System 104	
Stature	102	Rear Leg Rear View	97
Bone Quality	95	Udder Texture	102
Angularity	103	Udder Depth	99
Muzzle Width	104	Fore Attach	104
Body Depth	106	Rear Att Height	97
Chest Width	105	Rear Att Width	106
Pin Width	104	Centre Ligament	103
Pin Set	103	Teat Place Front	102
Loin Strength	100	Teat Place Rear	102
Foot Angle	102	Teat Length	96
Rear Leg Set	104		

0 dtrs 0 herds RIP 0%

0 dtrs 0 herds 48% rel

Orana Isaak

# ARBISAAK

Tosikko x BonJovi

A22



ARBISAAK



**BPI** 202/49%

Workability	
Milking Speed	100
Temperament	102
Likeability	102
Rel%	51

Health	
Cell Count	129
Survival	101
Dtr Fertility	100
Gest Days	-
Feed Saved	29

<b>Sire:</b>	Asmo Tosikko
<b>Dam:</b>	Orana Bonjovi Bell
<b>Herd Book</b>	26903
<b>NASIS:</b>	12UUL03
<b>Breeder:</b>	Orana Aussie Reds, Bena VIC

RRP \$18.00  
SEXED \$48.00

Production	
ASI	165
kgP	25
P%	0.23%
Milk	482
kgF	22
F%	0.02%
Rel%	54

Overall Type 100		Mammary System 102	
Stature	97	Rear Leg Rear View	94
Bone Quality	99	Udder Texture	101
Angularity	102	Udder Depth	99
Muzzle Width	104	Fore Attach	102
Body Depth	102	Rear Att Height	101
Chest Width	100	Rear Att Width	105
Pin Width	98	Centre Ligament	101
Pin Set	93	Teat Place Front	95
Loin Strength	98	Teat Place Rear	101
Foot Angle	101	Teat Length	98
Rear Leg Set	101		

0 dtrs 0 herds RIP 0%

0 dtrs 0 herds 45% rel

Paco Foske Jacko

# ARBJACKO

Foske x Bobdown

A12



ARBJACKO Grand Sire, ARBBOBDOWN



**BPI** 192/49%



Workability	
Milking Speed	101
Temperament	100
Likeability	103
Rel%	51

Health	
Cell Count	110
Survival	104
Dtr Fertility	100
Gest Days	-
Feed Saved	-53

<b>Sire:</b>	V Foske
<b>Dam:</b>	Paco Bobdown Jackie 102 VG86
<b>Herd Book</b>	31275
<b>NASIS:</b>	12UUN04
<b>Breeder:</b>	Paco Aussie Reds, Leongatha South, VIC

RRP \$16.00

Production	
ASI	168
kgP	24
P%	0.27%
Milk	384
kgF	21
F%	0.06%
Rel%	54

Overall Type 102		Mammary System 101	
Stature	102	Rear Leg Rear View	99
Bone Quality	98	Udder Texture	102
Angularity	104	Udder Depth	96
Muzzle Width	105	Fore Attach	97
Body Depth	104	Rear Att Height	96
Chest Width	103	Rear Att Width	103
Pin Width	103	Centre Ligament	103
Pin Set	107	Teat Place Front	105
Loin Strength	105	Teat Place Rear	101
Foot Angle	99	Teat Length	98
Rear Leg Set	106		

0 dtrs 0 herds RIP 0%

0 dtrs 0 herds 46% rel

Waikato Farm Caesar

# ARBCAESAR

Aotearoa x Kenneth

A22



ARBCAESAR



**BPI** 180/36%



Workability	
Milking Speed	102
Temperament	100
Likeability	102
Rel%	38

Health	
Cell Count	114
Survival	101
Dtr Fertility	104
Gest Days	-
Feed Saved	33

<b>Sire:</b>	Waikato Farm Aotearoa
<b>Dam:</b>	Waikato Farm Brooke 3934
<b>Herd Book</b>	29019
<b>NASIS:</b>	12UUP04
<b>Breeder:</b>	Waikato Farm Aussie Reds, Mt Schank, SA

RRP \$16.00

Production	
ASI	139
kgP	20
P%	0.15%
Milk	447
kgF	26
F%	0.10%
Rel%	42

Overall Type 97		Mammary System 96	
Stature	98	Rear Leg Rear View	96
Bone Quality	101	Udder Texture	98
Angularity	95	Udder Depth	98
Muzzle Width	102	Fore Attach	98
Body Depth	100	Rear Att Height	97
Chest Width	98	Rear Att Width	94
Pin Width	93	Centre Ligament	96
Pin Set	100	Teat Place Front	101
Loin Strength	96	Teat Place Rear	98
Foot Angle	100	Teat Length	101
Rear Leg Set	103		

0 dtrs 0 herds RIP 0%

0 dtrs 0 herds 25% rel

Beaulands Ninjago

# ARBININJAGO

Valpas x Foske A22



ARBININJAGO



**BPI** 161/46%

**SEMEN Fertility**  
+0.85

Workability	
Milking Speed	101
Temperament	101
Likeability	103
Rel%	46

Health	
Cell Count	106
Survival	103
Dtr Fertility	101
Gest Days	-
Feed Saved	-93

<b>Sire:</b>	Sammatin Valpas
<b>Dam:</b>	Beaulands Foske Leaf 25149 GP84
<b>Herd Book</b>	29018
<b>NASIS:</b>	12UUN03
<b>Breeder:</b>	Beaulands Aussie Reds, Nowra, NSW

RRP \$16.00

Production	
ASI	145
kgP	18
P%	0.11%
Milk	438
kgF	37
F%	0.27%
Rel%	52

Overall Type 102		Mammary System 98	
Stature	105	Rear Leg Rear View	101
Bone Quality	99	Udder Texture	99
Angularity	103	Udder Depth	101
Muzzle Width	103	Fore Attach	101
Body Depth	103	Rear Att Height	95
Chest Width	104	Rear Att Width	94
Pin Width	104	Centre Ligament	102
Pin Set	102	Teat Place Front	103
Loin Strength	97	Teat Place Rear	102
Foot Angle	102	Teat Length	96
Rear Leg Set	104		

0 dtrs 0 herds RIP 0%

0 dtrs 0 herds 41% rel

Johville Park Yogibear

# ARBYOGIBEAR

ARBScarebear x RDavid A22



ARBYOGIBEAR Sire, ARBSAREBEAR



**BPI** 235/44%

Workability	
Milking Speed	103
Temperament	101
Likeability	103
Rel%	46

Health	
Cell Count	117
Survival	103
Dtr Fertility	105
Gest Days	-
Feed Saved	37

<b>Sire:</b>	Johville Park Scarebear
<b>Dam:</b>	Johville Park David 5292
<b>Herd Book</b>	29580
<b>NASIS:</b>	12UUP07
<b>Breeder:</b>	Johville Park Aussie Reds, Leitchville, VIC

RRP \$18.00  
AVAILABLE  
JUNE

Production	
ASI	184
kgP	27
P%	0.19%
Milk	653
kgF	33
F%	0.08%
Rel%	50

Overall Type 94		Mammary System 97	
Stature	99	Rear Leg Rear View	97
Bone Quality	103	Udder Texture	101
Angularity	100	Udder Depth	96
Muzzle Width	100	Fore Attach	96
Body Depth	98	Rear Att Height	91
Chest Width	98	Rear Att Width	103
Pin Width	99	Centre Ligament	99
Pin Set	102	Teat Place Front	102
Loin Strength	100	Teat Place Rear	102
Foot Angle	99	Teat Length	96
Rear Leg Set	108		

0 dtrs 0 herds RIP 0%

0 dtrs 0 herds 36% rel

Beaulands Ponga

# ARBPONGA

Enger x Foske A22



FOSKE, ARBPONGA Sire



**BPI** 200/34%

Workability	
Milking Speed	101
Temperament	100
Likeability	101
Rel%	36

Health	
Cell Count	123
Survival	102
Dtr Fertility	104
Gest Days	-
Feed Saved	-49

<b>Sire:</b>	Enger
<b>Dam:</b>	Beaulands Foske Leaf 25149 GP84
<b>Herd Book</b>	29533
<b>NASIS:</b>	12UUP06
<b>Breeder:</b>	Beaulands Aussie Reds, Nowra, NSW

RRP \$18.00  
AVAILABLE  
JUNE

Production	
ASI	144
kgP	17
P%	0.16%
Milk	330
kgF	32
F%	0.27%
Rel%	38

Overall Type 99		Mammary System 100	
Stature	103	Rear Leg Rear View	98
Bone Quality	98	Udder Texture	99
Angularity	100	Udder Depth	97
Muzzle Width	100	Fore Attach	102
Body Depth	101	Rear Att Height	95
Chest Width	102	Rear Att Width	100
Pin Width	106	Centre Ligament	101
Pin Set	107	Teat Place Front	101
Loin Strength	100	Teat Place Rear	99
Foot Angle	100	Teat Length	100
Rear Leg Set	104		

0 dtrs 0 herds RIP 0%

0 dtrs 0 herds 30% rel

Beaulands McGuire

# ARBEDDIE

Fonseca x Tosikko A12



FONSECA, ARBEDDIE sire



**BPI** 179/41%

Workability	
Milking Speed	101
Temperament	102
Likeability	102
Rel%	39

Health	
Cell Count	116
Survival	103
Dtr Fertility	105
Gest Days	-
Feed Saved	-15

<b>Sire:</b>	Fonseca
<b>Dam:</b>	Beaulands Tosikko Stately 25169 VG87
<b>Herd Book</b>	29582
<b>NASIS:</b>	12UUP08
<b>Breeder:</b>	Beaulands Aussie Reds, Nowra, NSW

RRP \$16.00  
AVAILABLE  
JUNE

Production	
ASI	115
kgP	17
P%	0.14%
Milk	348
kgF	19
F%	0.05%
Rel%	48

Overall Type 99		Mammary System 101	
Stature	101	Rear Leg Rear View	99
Bone Quality	98	Udder Texture	100
Angularity	99	Udder Depth	104
Muzzle Width	100	Fore Attach	105
Body Depth	99	Rear Att Height	102
Chest Width	103	Rear Att Width	100
Pin Width	104	Centre Ligament	99
Pin Set	99	Teat Place Front	96
Loin Strength	97	Teat Place Rear	98
Foot Angle	103	Teat Length	98
Rear Leg Set	99		

0 dtrs 0 herds RIP 0%

0 dtrs 0 herds 31% rel



# ESTROTECT™

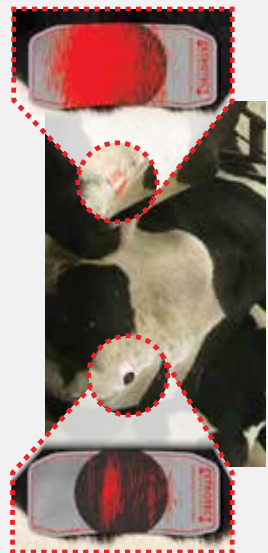
## BREEDING INDICATOR

For more than a decade, ESTROTECT have established a legacy as the best proven rub-off heat detector. The newly redesigned ESTROTECT™ Breeding Indicator features patented Breeding Bullseye technology that indicates when cows are ready to breed, helps confirm pregnancies and provides pinpoint timing for AI protocols!

The precision-designed Breeding Bullseye™ takes all the guesswork out of your breeding program. When the Breeding Bullseye – or the equivalent amount – is rubbed off, it's time to breed!



**BREED**



**DON'T BREED**

**AS GOOD AS A BULL™**

[www.ESTROTECT.com](http://www.ESTROTECT.com)

VR Viking Viljar Vilperi

VRVILPERI

**VR VILPERI**

VR Viljar x VR Vimur R

A22



VRVILPERI

**gNTM + 32**

Udder Health	120
Longevity	115
Calving Ease	113
Daughter Fert	108
Milking Speed	115
Temp	103
Frame	108
Feet and Legs	114
Udder	122

Sire:	VR Viljar
Dam:	A. Lontoo ET
Herd Book	—
NASIS:	—
Breeder:	Kallioinen Pekka, Hytintie, Finland

**RRP  
\$26.00**

Production	
Prod Index	113
Milk	104
kgP	109
P%	107
kgF	114
F%	112
Rel %	73

0 dtrs 0 herds

Type			
Stature	105	Hock Quality	99
Dairy Form	106	Fore Udder	104
Chest Width	98	Rear Udder Height	101
Body Depth	91	Rear Udder Width	98
Rump Width	103	Suspensory Ligament	106
Rump Angle	93	Udder Depth	113
Top Line	117	Udder Balance	103
Legs Side	97	Teat Length	105
Legs Rear View	95	Teat Placement Front	105
Foot Angle	113	Teat Placement Rear	94
Bone Quality	104		

VR Viken Uudin Ultra

VRULTRA

**VR ULTRA**

VR Uludin ET X VR Truls

A12



VRULTRA

**gNTM + 24**

Udder Health	104
Longevity	114
Calving Ease	108
Daughter Fert	102
Milking Speed	106
Temp	109
Frame	100
Feet and Legs	97
Udder	104

Sire:	VR Uludin ET
Dam:	3775 Bina
Herd Book	SWE99811
NASIS:	87UUM06
Breeder:	Nötcenter Viken, Sweden

**RRP  
\$26.00**

Production	
Prod Index	116
Milk	111
kgP	111
P%	97
kgF	120
F%	111
Rel %	82

0 dtrs 0 herds

Type			
Stature	108	Hock Quality	103
Dairy Form	103	Fore Udder	103
Chest Width	99	Rear Udder Height	107
Body Depth	94	Rear Udder Width	105
Rump Width	101	Suspensory Ligament	97
Rump Angle	107	Udder Depth	104
Top Line	106	Udder Balance	108
Legs Side	105	Teat Length	99
Legs Rear View	89	Teat Placement Front	106
Foot Angle	97	Teat Placement Rear	103
Bone Quality	106		

VR Lucky Luke P

VRLUKE P

**VR LUKE P**

VR Lucky X Nora Prästgård

A22



VRLUKEP

**gNTM + 10**

Udder Health	94
Longevity	110
Calving Ease	103
Daughter Fert	103
Milking Speed	114
Temp	98
Frame	98
Feet and Legs	103
Udder	108

Sire:	VR Lucky
Dam:	20980-02001
Herd Book	DNK37896
NASIS:	89UUN05
Breeder:	Søren Røndjerg, Denmark

**RRP  
\$20.00**

Production	
Prod Index	105
Milk	94
kgP	101
P%	115
kgF	105
F%	115
Rel %	77

0 dtrs 0 herds

Type			
Stature	105	Hock Quality	99
Dairy Form	104	Fore Udder	103
Chest Width	97	Rear Udder Height	102
Body Depth	90	Rear Udder Width	98
Rump Width	102	Suspensory Ligament	105
Rump Angle	93	Udder Depth	113
Top Line	118	Udder Balance	104
Legs Side	96	Teat Length	104
Legs Rear View	95	Teat Placement Front	104
Foot Angle	113	Teat Placement Rear	95
Bone Quality	104		

VR Antilan Faabeli Futari

VRFUTARI

**VR FUTARI**

VR Faabeli X VR Sampo

A22



VRFUTARI

**gNTM + 19**

Udder Health	107
Longevity	106
Calving Ease	105
Daughter Fert	103
Milking Speed	104
Temp	103
Frame	83
Feet and Legs	114
Udder	110

Sire:	VR Lucky
Dam:	20980-02001
Herd Book	DNK37896
NASIS:	89UUN05
Breeder:	Søren Røndjerg, Denmark

**RRP  
\$20.00**

Production	
Prod Index	111
Milk	105
kgP	113
P%	112
kgF	106
F%	101
Rel %	77

0 dtrs 0 herds

Type			
Stature	100	Hock Quality	112
Dairy Form	105	Fore Udder	101
Chest Width	81	Rear Udder Height	113
Body Depth	78	Rear Udder Width	105
Rump Width	96	Suspensory Ligament	102
Rump Angle	100	Udder Depth	114
Top Line	90	Udder Balance	105
Legs Side	93	Teat Length	103
Legs Rear View	104	Teat Placement Front	100
Foot Angle	89	Teat Placement Rear	99
Bone Quality	118		



Jedusor

JEDUSOR

JEDUSOR

Geyser x Vitriol

A22

Jedusor



Udder Health	0.4
Survival	0.4
Calving Ease	93
Dtr Fert	-0.1
Milking Speed	0.1
Temp	0
Overall Type	0.90
Mammary	1.4

Sire:	Geyser
Dam:	Genievre
Herd Book	FR2228243320
Breeder:	Evolution, France

RRP  
\$32.00

Production	
INEL	32
kgP	28
P%	1.3
Milk	590
kgF	16
F%	-0.8
Rel %	73

5 dtrs 5 herds

Type	
Stature	0.7
Strength	-0.4
Chest depth	-0.3
Pin Width	-0.1
Rump Angle	-0.4
Loin Strength	0.0
Foot Angle	1.4
Rear Set	0.6
Rear Leg Rear View	4.0
Foot & Leg Score	0.5
Udder Depth	1.1
Udder Balance	0.3
Fore Attachment	1.0
Rear Attachment Height	106
Cent Ligament	0.5
Teat Placement front	2.3
Teat Direction	1.0
Teat Length	

0 dtrs 0 herds 70%rel

Matisse

MATISSE

MATISSE

Incross x Arnica

A12

Matisse



Udder Health	0.6
Survival	0.3
Calving Ease	89
Dtr Fert	0.4
Milking Speed	0.4
Temp	0.5
Overall Type	1.0
Mammary	1.0

Sire:	Incross
Dam:	Iris 62
Herd Book	M000538116643
Breeder:	Evolution, France

RRP  
\$26.00

Production	
INEL	27
kgP	20
P%	1.4
Milk	324
kgF	29
F%	1.4
Rel %	69

0 dtrs 0 herds

Type	
Stature	0.1
Strength	-0.2
Chest depth	-0.4
Pin Width	-0.6
Rump Angle	0.5
Loin Strength	0.2
Foot Angle	0.9
Rear Set	0.3
Rear Leg Rear View	1.4
Foot & Leg Score	1.0
Udder Depth	0.2
Udder Balance	1.1
Fore Attachment	1.5
Rear Attachment Height	0.9
Cent Ligament	1.0
Teat Placement front	0.6
Teat Direction	0.2
Teat Length	

0 dtrs 0 herds 67%rel

JB Fracas

JBFRACAS

FRACAS JB

Urbaniste x Micmac

A22

JBFRACAS



ISU 118

Udder Health	0.4
Survival	0.8
Calving Ease	91
Dtr Fert	0.7
Milking Speed	117
Temp	108
Overall type	106
Udders	106

Sire:	Urbaniste
Dam:	Vedette 2
Herd Book	FR8519408699
NASIS:	94MOG05
Breeder:	Jura Betail, France

RRP  
\$25.00

Production	
INEL	12
kgP	8
P%	-0.5
Milk	363
kgF	20
F%	0.3
Rel %	95

237 dtrs 157 herds

Type	
Stature	106
Chest Width	91
Chest Depth	102
Body Depth	101
Rump Length	107
Pin Width	106
Thurl Width	99
Rump Angle	88
Feet & legs	114
Rear Leg Set	96
Foot Angle	96
Udder Depth	96
Udder Balance	105
Fore Attachment	112
Rear Att Height	96
Rear Att Width	102
Front Teat Placement	105
Teat Direction	102
Teat Length	108

191 dtrs 125 herds 95% rel

JB Indolor

JBINDOLOR

INDOLOR JB

Flipex JB x Oran JB

A12

JBINDOLOR



ISU 153

Udder Health	0.9
Survival	-0.1
Calving Ease	90
Dtr Fert	1.2
Milking Speed	122
Temp	107
Overall type	105
Udders	103

Sire:	Flipex JB
Dam:	Belote
Herd Book	FR3925531266
NASIS:	
Breeder:	Jura Betail, France

RRP  
\$26.00

Production	
INEL	42
kgP	30
P%	2.6
Milk	237
kgF	41
F%	4.2
Rel %	83

30 dtrs 27 herds

Type	
Stature	103
Chest Width	105
Chest Depth	98
Body Depth	102
Rump Length	88
Pin Width	86
Thurl Width	83
Rump Angle	112
Feet & legs	107
Rear Leg Set	115
Foot Angle	116
Udder Depth	96
Udder Balance	113
Fore Attachment	105
Rear Att Height	112
Rear Att Width	113
Front Teat Placement	88
Teat Direction	81
Teat Length	104

17 dtrs 16 herds 81% rel

JB Harpon

JBHARPON

**HARPON JB**

Flipex JB x Triomphe

JBHARPON

**ISU 154**

Udder Health	0.0
Survival	0.6
Calving Ease	88
Dtr Fert	-0.7
Milking Speed	102
Temp	103
Overall type	113
Udders	101

<b>Sire:</b>	Flipex JB
<b>Dam:</b>	Esperance
<b>Herd Book</b>	FR3921920863
<b>NASIS:</b>	—
<b>Breeder:</b>	Jura Betail, France

**RRP  
\$30.00**

Production		
INEL	48	
kgP	37	
P%	1.5	
Milk	751	
kgF	50	
F%	2.6	
Rel %	95	

258 dtrs 177 herds

Type			
Stature	113	Foot Angle	110
Chest Width	116	Udder Depth	86
Chest Depth	100	Udder Balance	122
Body Depth	127	Fore Attachment	102
Rump Length	103	Rear Att Height	87
Pin Width	112	Rear Att Width	100
Thurl Width	108	Front Teat Placement	100
Rump Angle	110	Teat Direction	97
Feet & legs	115	Teat Length	89
Rear Leg Set	107		

156 dtrs 105 herds 95% rel

JB Jordren

JBJORDREN

**JORDERN JB**

Elastar x Diderot

A22

JBJORDREN

**ISU 152**

Udder Health	1.0
Survival	0.5
Calving Ease	90
Dtr Fert	1.3
Milking Speed	100
Temp	110
Overall type	105
Udders	104

<b>Sire:</b>	Elastar
<b>Dam:</b>	Grimace
<b>Herd Book</b>	FR7251982851
<b>NASIS:</b>	—
<b>Breeder:</b>	Jura Betail, France

**RRP  
\$30.00**

Production		
INEL	31	
kgP	22	
P%	1.6	
Milk	258	
kgF	34	
F%	3.1	
Rel %	72	

0 dtrs 0 herds

Type			
Stature	97	Foot Angle	107
Chest Width	102	Udder Depth	89
Chest Depth	101	Udder Balance	102
Body Depth	106	Fore Attachment	126
Rump Length	100	Rear Att Height	98
Pin Width	115	Rear Att Width	117
Thurl Width	94	Front Teat Placement	106
Rump Angle	101	Teat Direction	96
Feet & legs	102	Teat Length	99
Rear Leg Set	97		

0 dtrs 0 herds 71% rel

JB Lanzac

JBLANZAC

**LANZAC JB**

Ibanez x Bogoro

A11

JBLANZAC

**ISU 122**

Udder Health	0.2
Survival	0.8
Calving Ease	90
Dtr Fert	0.2
Milking Speed	111
Temp	121
Overall type	106
Udders	115

<b>Sire:</b>	Ibanez
<b>Dam:</b>	Fauvette
<b>Herd Book</b>	FR5377645658
<b>NASIS:</b>	94MOM03
<b>Breeder:</b>	Jura Betail, France

**RRP  
\$24.00**

Production		
INEL	13	
kgP	9	
P%	0.7	
Milk	73	
kgF	15	
F%	0.9	
Rel %	72	

0 dtrs 0 herds

Type			
Stature	101	Foot Angle	102
Chest Width	88	Udder Depth	100
Chest Depth	99	Udder Balance	110
Body Depth	99	Fore Attachment	113
Rump Length	92	Rear Att Height	111
Pin Width	104	Rear Att Width	109
Thurl Width	93	Front Teat Placement	118
Rump Angle	97	Teat Direction	112
Feet & legs	105	Teat Length	112
Rear Leg Set	106		

0 dtrs 0 herds 71% rel

JB Idaho

JBIDAHO

**IDAHO JB**

Flash x Triomphe

A12

JBIDAHO

**ISU 119**

Udder Health	-0.6
Survival	-0.2
Calving Ease	90
Dtr Fert	-1.2
Milking Speed	114
Temp	104
Overall type	113
Udders	105

<b>Sire:</b>	Flash JB
<b>Dam:</b>	Fortune
<b>Herd Book</b>	FR5375489524
<b>NASIS:</b>	94MOK04
<b>Breeder:</b>	Jura Betail, France

**RRP  
\$20.00**

Production		
INEL	26	
kgP	23	
P%	0.6	
Milk	490	
kgF	16	
F%	-0.6	
Rel %	76	

10 dtrs 10 herds

Type			
Stature	107	Foot Angle	106
Chest Width	110	Udder Depth	93
Chest Depth	120	Udder Balance	121
Body Depth	120	Fore Attachment	102
Rump Length	101	Rear Att Height	96
Pin Width	104	Rear Att Width	101
Thurl Width	98	Front Teat Placement	92
Rump Angle	118	Teat Direction	105
Feet & legs	97	Teat Length	87
Rear Leg Set	116		

8 dtrs 8 herds 77% rel





Available from Genetics Australia

# MAXIMISE GENETIC IMPROVEMENT IN YOUR HERD WITH GENESCREEN

Genescreen from Genetics Australia is a powerful yet easy-to-use tool that helps to maximise genetic improvement and profitability in your herd.

It monitors genetic progress in your herd, provides mating recommendations based on your choice of sires from any source and then predicts the impact of these choices upon the performance of your herd.

No on-farm evaluation is necessary and best of all, Genescreen is available as a free service to Genetics Australia members.

Contact Genetics Australia and find out how Genescreen can help you to breed a better Australian herd.

**“Genescreen enables us to benchmark genetic improvement and make better breeding decisions to increase the profitability of our herd.”**

Terry & Joanne Place,  
Camperdown, Victoria







**Our Horizon Genomic Program has now changed to reflect the continuing evolution of our genetic landscape.**

**Turn to Page 14 to find out how.**



**Genetics AUSTRALIA**  
Breeding better Australian herds

**Genetics Australia Co-Operative Limited**

PO Box 195, BACCHUS MARSH, VIC 3340, AUSTRALIA

**P:** +61 3 5367 3888 **F:** + 61 3 5367 5100 **Freecall:** 1800 039 047

**www.genaust.com.au**

**ORDERS & CUSTOMER SERVICE**

**T:** 03 5367 3888  
**E:** orders@genaust.com.au

**Nigel Semmens**  
**BEEF SALES MANAGER**  
**M:** 0439 417 941  
**E:** nsemmens@genaust.com.au

**Coleman Baulch**  
**REGIONAL SALES MANAGER**  
Western Victoria, East Gippsland & Tasmania  
**M:** 0429 473 563  
**E:** cbaulch@genaust.com.au

**Gerard Collins**  
**SALES REPRESENTATIVE**  
Northern Victoria  
**M:** 0428 387 276  
**E:** gcollins@genaust.com.au

**Anthony Shelly**  
**CHIEF EXECUTIVE OFFICER**  
**M:** 0408 529 410  
**E:** ashelly@genaust.com.au

**Mike Huth**  
**FIELD SALES MANAGER**  
Western Victoria, Mount Gambier & Central Gippsland  
**M:** 0409 555 042  
**E:** mhuth@genaust.com.au

**Rodney Brooks**  
**SALES REPRESENTATIVE**  
Western Victoria, South East South Australia, South & North Coast NSW  
**M:** 0408 741 034  
**E:** rbrooks@genaust.com.au

**Ian Noakes**  
**SALES REPRESENTATIVE**  
Western Australia  
**M:** 0409 297 805  
**E:** inoakes@genaust.com.au

**Peter Thurn**  
**BREEDING & GENETICS MANAGER**  
**M:** 0417 575 986  
**E:** pthurn@genaust.com.au

**Gerard Brislin**  
**REGIONAL SALES MANAGER**  
Gippsland & Tasmania  
**M:** 0408 107 019  
**E:** gbrislin@genaust.com.au

**Andrew Medhurst**  
**SALES REPRESENTATIVE**  
Northern Victoria & Far South Coast NSW  
**M:** 0417 575 932  
**E:** amedhurst@genaust.com.au

**John Harle**  
**SALES REPRESENTATIVE**  
Queensland & NSW  
**T:** 07 3818 0564  
**E:** jharle@genaust.com.au

**Graeme Cowan**  
**MERCHANDISE MANAGER**  
**T:** 03 5367 9221  
**E:** gcowan@genaust.com.au

**Greg Tiller**  
**REGIONAL SALES MANAGER**  
Northern Victoria, Riverina NSW, Fleurieu & Hills South Australia  
**M:** 0407 366 985  
**E:** gtiller@genaust.com.au

**Ash Hogg**  
**SALES REPRESENTATIVE**  
Northern Victoria  
**M:** 0407 842 144  
**E:** ahogg@genaust.com.au