

2019 INTERNATIONAL DAIRY SIRE CATALOGUE

HOLSTEINS | JERSEYS | COLOURED BREEDS



CONTENTS

HOLSTEIN

2-15

- 2 SAMURI / HOUSE
- 3 LIBERTY P / CYCLONE
- 4 HAIL / SUPERJET / SIR-ROZ / ITLETSGO
- 5 FEDORA / DEWARS
- 6 ITSNEAKER / GOLD CHIP
- 7 BRADNICK / SECRETARIAT
- 8 FABIO / CLASH P / OUTLAST PP / ITINNUENDO
- 9 DEMPSEY / GUTHRIE
- 10 BARCUDA PP RED / APPLE-CRISP RC / MOGUL / EUDON
- 11 JSGLAMOR / JSNINJA
- 12 JSCOLD P / JSWOODFORD / JSEXETER / JSSALVATORE
- 13 JSYOLO / JSMARDIGRAS / JSMMASTERMIND
- 14 JSSUPERHERO / JSLEXELL / JSANSWER / JSHOTSPOT
- 15 JSIMMENSE / JSPJ PP RED / JSDEMAN / JSBREWERC RC

- 16 US DATA PANEL
- 17 ABV DATA PANEL

JERSEY

18-19

- 18 SUIT / GRANT / AXIS / SOLAR PP
- 19 VALENTINO / OLIVER P / IRWIN / CASPIAN

BROWN SWISS

20-21

- 20 SUPHADRIAN / SUPFENER / SUPALEXIS / SUPDUPLAGO
- 21 ITBENDER / SUPHOTEL / SUPSUPERSTAR / SUPTEVEZ

ARYSHIRE

22

- 22 BOSTIC / BLACKJACK / SAMSON / TIMOTHY

ILLAWARRA

23

- 23 THOMPSON / JAZZY / MONTAGNA

GUERNSEY

24

- 24 CHARMING / JAGUAR / NEWTON / POPEYE

Our strongest ever line up of genetics

It is with a great deal of pride we present our 2019 International Sire Catalogue. It is without doubt the strongest group of bulls we have ever offered to Australian farmers.

One of the highlights of the April ABV release was an upgrade to the software used to calculate the breeding values. Its introduction will have wide ranging benefits for the industry with the system now better able to cope with the vast influx of data received from your farm and from around the world. The outcome will be more frequent breeding values and greater stability.

At Genetics Australia we are proud of our strong relationships with some of the world's leading genetics suppliers. World Wide Sires, GGI – Germany, Masterrind, Jetstream, Superbrown, Intermizoo and Inseme are all valued suppliers and Australian dairy farmers benefit through our access to the best genetics these companies can offer. Whether it is high profit sires, show ring type transmitters or outstanding health sires, this line-up of quality International sires will contain something for you.

For over 60-years Genetics Australia has developed and sourced the best genetics for our members and customers and this year is no different.

I trust you will enjoy selecting bulls from this catalogue as much as I do for your breeding program this year.

Trevor Henry

Dairy Farmer and Chairman of Genetics Australia

Follow these references throughout the catalogue to easily identify the bulls that best suit your breeding program.



Ensure heifer calves by using 2.1ml or 4.0ml Sexed Ultra.



*Tomorrows sires today.
The best genomic sires available in Australia.*



The first-choice sires for those wanting to produce A2 Milk.



*High yields and great components.
Bulls that boost your herd's production.*



*Functionality, longevity, udders and style.
Siring cows that look good and last the distance.*



*Fertility, milk quality and longevity.
For cows that last longer and cost you less.*



Ensure your investment makes a smooth transition into the world by choosing easy calving sires.

DISCLAIMER: The content of this Catalogue is provided for information only. It is published with care and attention to accuracy, but Genetics Australia accepts no liability if, for any reason the information is inaccurate or out of date whether negligent or otherwise.

Limitation of Liability: Genetics Australia warrants that it has clear title to the products sold and that all semen processed in its laboratory is processed under rigid quality controls. Since Genetics Australia does not control conditions under which its products are used it does not give, and its agents and employees are forbidden to give, any warranty express or implied as to the conception rate quality or productiveness or the results which may be obtained by the use of any product sold or in connection with any techniques recommended. Genetics Australia makes no other warranty of any kind whatsoever express or implied which extends beyond the description of its products. Where so permitted the liability of Genetics Australia for breach of a condition or warranty implied by statute is limited at Genetics Australia's option to the replacement or repair of the goods or the supply of equivalent goods or the cost of replacing or repairing the goods or of acquiring equivalent goods. So far as the law permits Genetics Australia shall not be liable in any way whatsoever for any indirect or consequential loss or loss of profit.

Sexed (sorted) semen: Artificial insemination straws that Genetics Australia offers for sale as sexed (sorted) semen using Sexing Technologies proprietary technology, shall only be used for single-use artificial insemination and not for in-vitro-fertilisation or embryo transfer.

COVER: International Dairy Week 2019

“Genetics Australia is proud of our strong relationships with the worlds leading genetic suppliers.”



Valentino Daughter, Cairnbrae Valentino Daisy 11



Bradnick Daughter, Horizon Bradnick Ambrosia 2

HOLSTEIN TRAIT LEADERS

PRODUCTION (K+P)	
INNUENDO	167
WOODFORD	146
SAMURI	144
MASTERMIND	143
EXETER	136
ANSWER PO	135
NINJA	135
SUPERJET	133
YOLO	128
CYCLONE	125

DPR	
CYCLONE	3.5
HOUSE	3.2
SUPERHERO	3.1
OUTLAST PP	2.6
HAIL	2.5
PJ PP RED	2.5
EXETER	2.2
SIR-ROZ	2.2
LIBERTY P	2.1
COLD P	2.0

SCR	
GLAMOR	4.4
SAMURI	3.4
LIBERTY	2.3
APPLE-CRISP RC	2.2
HOTSPOT	1.8
YOLO	1.8
MARDI GRAS	1.7
SALVATORE RC	1.7
MASTERMIND	1.5
BARCUDA PP RED	1.4

TPI	
YOLO	2742
WOODFORD	2703
LEXELL	2702
SAMURI	2702
NINJA	2680
HOUSE	2674
SUPERJET	2653
CYCLONE	2648
LETSGO	2640
SIR-ROZ	2640

A2 BULLS	
YOLO	A22
SAMURI	A22
WOODFORD	A22
HAIL	A22
EXETER	A22
NINJA	A22
HOUSE	A22
LIBERTY P	A22
CLASH P	A22
HOTSPOT	A22
PJ PP RED	A22
COLD P	A22
DEWARS	A22
BARCUDA PP RED	A22
SECRETARIAT	A22
SNEAKER	A22
BRADNICK	A22
IMMENSE	A22

UDC	
HOTSPOT	3.32
SNEAKER	3.25
YOLO	3.23
LETSGO	3.15
MOGUL	3.11
NINJA	3.10
SECRETARIAT	3.06
LEXELL	2.98
IMMENSE	2.92
HAIL	2.87

SCE	
GOLD CHIP	5.1
SALVATORE RC	5.2
FABIO	5.4
CLASH P	5.5
MOGUL	6.0
OUTLAST PP	6.0
LIBERTY P	6.1
GUTHRIE	6.2
NINJA	6.2
SUPERJET	6.2

TYPE	
IMMENSE	4.18
HOTSPOT	3.92
SNEAKER	3.48
LETSGO	3.28
DEMAN	3.24
BREWER RC	3.10
APPLE-CRISP RC	3.04
NINJA	3.02
HOUSE	2.69
YOLO	2.65

NET MERIT	
YOLO	850
SAMURI	838
WOODFORD	825
SIR-ROZ	820
CYCLONE	816
SUPERJET	804
MASTERMIND	792
LEXELL	775
HAIL	767
SALVATORE RC	763

Ocd Spring Samuri-ET

7H12897

SAMURI

Altaspring x Supersire

A22

RRP \$30.00
SEXED \$65.00

BPI 285/68%

Type 106/63%

Mammary 107/63%

Dtr Fertility 107/61%

0 dtrs 0 herds



Samuri MGD, Ocd Robust Shimmer-ET

Sire: Westenrade AltaSpring

Dam: Ocd Supersire 9882-ET VG86

Production 0 dtrs 0 herds 81% rel

PTA Milk	PTA Fat	% Fat	PTA Pro	% Pro
1003	89	0.18	55	0.09

Health & Reproduction

PTA DPR	PL	SCE	SCR	SCS
1.9	5.7	7.1	3.4	2.83

Physical Trait Evaluation 0 dtrs 0 herds 81% rel

PTA Type	UDC	FLC	TPI	Net Merit \$
2.02	2.10	0.85	2702	838

Stature	Short				1.32	Tall
Strength	Narrow				1.07	Wide
Body Depth	Shallow				0.91	Deep
Dairyness	Thick				1.45	Angular
Rump (side View)	High Pins				0.67	Sloped
Rump Width	Narrow				1.64	Wide
Rear Leg (Side View)	Posty				0.22	Sickled
Rear Leg (Rear View)	Hock In				1.27	Straight
Foot Angle	Low Angle				0.77	Steep Angle
Foot & Leg Score	Low				0.98	High
Fore Udder	Loose				2.44	Strong
Rear Udder Height	Low				2.98	High
Rear Udder Width	Narrow				2.74	Wide
Suspensory Ligament	Weak				1.22	Strong
Udder Depth	Deep				1.83	Shallow
Teats (Front View)	Wide				1.85	Close
Teats (Rear View)	Wide				1.73	Close
Teat Length	Short				-1.39	Long

Samuri Dam, Ocd Supersire 9882-ET



Leaninghouse Helix 22137-ET

7H012978

HOUSE

Hang-Time x Jacey

A22



RRP \$30.00

BPI 276/68%

Type 101/63%

Mammary 106/63%

Dtr Fertility 107/57%

0 dtrs 0 herds



House MGD, Sully Planet Manitoba-ET

Sire: Cookiecutter Hang-Time-ET

Dam: Blondin Butz Jacey Mistress VG87

Production 0 dtrs 0 herds 79% rel

PTA Milk	PTA Fat	% Fat	PTA Pro	% Pro
985	63	0.09	47	0.06

Health & Reproduction

PTA DPR	PL	SCE	SCR	SCS
3.2	6.0	7.5	1.2	2.57

Physical Trait Evaluation 0 dtrs 0 herds 78% rel

PTA Type	UDC	FLC	TPI	Net Merit \$
2.69	2.53	1.14	2674	735

Stature	Short				1.45	Tall
Strength	Narrow				0.71	Wide
Body Depth	Shallow				0.74	Deep
Dairyness	Thick				1.91	Angular
Rump (side View)	High Pins				-0.04	Sloped
Rump Width	Narrow				1.20	Wide
Rear Leg (Side View)	Posty				0.00	Sickled
Rear Leg (Rear View)	Hock In				0.54	Straight
Foot Angle	Low Angle				1.67	Steep Angle
Foot & Leg Score	Low				1.50	High
Fore Udder	Loose				2.77	Strong
Rear Udder Height	Low				3.70	High
Rear Udder Width	Narrow				3.40	Wide
Suspensory Ligament	Weak				2.18	Strong
Udder Depth	Deep				1.73	Shallow
Teats (Front View)	Wide				2.14	Close
Teats (Rear View)	Wide				2.25	Close
Teat Length	Short				-1.53	Long

House Dam, Blondin Butz Jacey Mistress-ET



S-S-I TR Mortz Liberty-P-ET

7H014132

LIBERTY P

Moritz x Eraser P

A22

RRP \$26.00
SEXED \$55.00**BPI** 285/66%**Type** 105/60%**Mammary** 109/60%**Dtr Fertility** 105/53%

0 dtrs 0 herds



Liberty P MGD, S-S-I Supersire Mini 8679-ET

Sire: Aurora Moritz 372-ET**Dam:** S-S-I Eraser Maci 10932-P-ET**Production**

0 dtrs 0 herds 78% rel

PTA Milk	PTA Fat	% Fat	PTA Pro	% Pro
1189	64	0.07	47	0.04

Health & Reproduction

PTA DPR	PL	SCE	SCR	SCS
2.1	5.6	6.1	2.3	2.78

Physical Trait Evaluation

0 dtrs 0 herds 76% rel

PTA Type	UDC	FLC	TPI	Net Merit \$
2.16	2.62	1.24	2621	733

Stature	Short				1.52	Tall
Strength	Narrow				0.50	Wide
Body Depth	Shallow				0.40	Deep
Dairyness	Thick				0.91	Angular
Rump (side View)	High Pins				-0.73	Sloped
Rump Width	Narrow				1.36	Wide
Rear Leg (Side View)	Posty				0.06	Sickled
Rear Leg (Rear View)	Hock In				1.25	Straight
Foot Angle	Low Angle				1.47	Steep Angle
Foot & Leg Score	Low				1.47	High
Fore Udder	Loose				2.93	Strong
Rear Udder Height	Low				3.40	High
Rear Udder Width	Narrow				3.13	Wide
Suspensory Ligament	Weak				1.62	Strong
Udder Depth	Deep				2.84	Shallow
Teats (Front View)	Wide				0.93	Close
Teats (Rear View)	Wide				0.96	Close
Teat Length	Short				-0.71	Long

Liberty P MGD, S-S-I Bookem Modesto7269-ET



Ocd Yoder Cyclone-ET

7H012858

CYCLONE

Yoder x Numero Uno

A12

RRP \$28.00
SEXED \$55.00**BPI** 333/68%**Type** 100/64%**Mammary** 106/64%**Dtr Fertility** 109/60%

0 dtrs 0 herds



Cyclone MGD, Larcrest Crimson 2010-ET

Sire: Woodcrest Mogul Yoder-ET**Dam:** Morsan Uno Cinergy VG85**Production**

0 dtrs 0 herds 81% rel

PTA Milk	PTA Fat	% Fat	PTA Pro	% Pro
335	92	0.29	33	0.08

Health & Reproduction

PTA DPR	PL	SCE	SCR	SCS
3.5	5.8	7.6	0.5	2.8

Physical Trait Evaluation

0 dtrs 0 herds 80% rel

PTA Type	UDC	FLC	TPI	Net Merit \$
1.43	1.74	0.97	2648	816

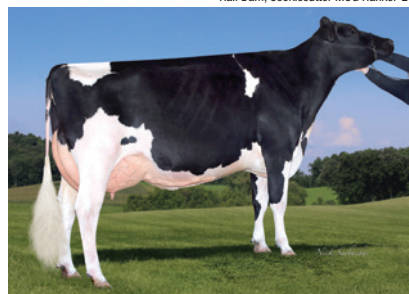
Stature	Short				1.07	Tall
Strength	Narrow				-0.20	Wide
Body Depth	Shallow				-0.22	Deep
Dairyness	Thick				0.70	Angular
Rump (side View)	High Pins				0.86	Sloped
Rump Width	Narrow				0.47	Wide
Rear Leg (Side View)	Posty				-1.96	Sickled
Rear Leg (Rear View)	Hock In				0.88	Straight
Foot Angle	Low Angle				1.10	Steep Angle
Foot & Leg Score	Low				1.15	High
Fore Udder	Loose				1.86	Strong
Rear Udder Height	Low				2.20	High
Rear Udder Width	Narrow				2.02	Wide
Suspensory Ligament	Weak				1.49	Strong
Udder Depth	Deep				1.88	Shallow
Teats (Front View)	Wide				1.39	Close
Teats (Rear View)	Wide				1.77	Close
Teat Length	Short				-0.78	Long

Cyclone Dam, Morsan Uno Cinergy-ET



Siemers Modesty Hail-ET
HAIL
Modesty x Mogul
A22

7H012951



Hail Dam, Cookiecutter MOG Hanker-ET



Hail MGD, Cookiecutter MOM Halo-ET

PTA Milk	819
PTA Fat	65
% Fat	0.12
PTA Pro	44
% Pro	0.07
PTA DPR	2.5
PL	5.9
SCE	6.3
SCR	-0.3
SCS	3.03

0 dtrs 0 herds 81% rel

BPI 295 /68%

Type 104 /64%

Mammary 107 /64%

Dtr Fertility 108 /58%

0 dtrs 0 herds

Sire:	Bacon-Hill Pety Modesty-ET
Dam:	Cookiecutter Mog Hanker-ET EX92

RRP \$28.00

Physical Trait Evaluation					0 dtrs 0 herds 80% rel
PTA Type	UDC	FLC	TPI	Net Merit \$	
1.94	2.87	1.58	2620	767	
Stature	Short			0.50	Tall
Strength	Narrow			-0.60	Wide
Body Depth	Shallow			-0.57	Deep
Dairyness	Thick			0.75	Angular
Rump (side View)	High Pins			0.67	Sloped
Rump Width	Narrow			-0.71	Wide
Rear Leg (Side View)	Posty			-0.72	Sickled
Rear Leg (Rear View)	Hock In			1.11	Straight
Foot Angle	Low Angle			1.82	Steep Angle
Foot & Leg Score	Low			1.62	High
Fore Udder	Loose			3.04	Strong
Rear Udder Height	Low			3.74	High
Rear Udder Width	Narrow			3.44	Wide
Suspensory Ligament	Weak			0.51	Strong
Udder Depth	Deep			2.34	Shallow
Teats (Front View)	Wide			1.20	Close
Teats (Rear View)	Wide			1.04	Close
Teat Length	Short			-0.07	Long

Superjet
SUPERJET
Superhero x Balisto
A12

SUPERJET



Superjet GDam, Sandy-Valley Nu Precious



Superjet MGGD, Pine-Tree Monica Planeta-ET

PTA Milk	863
PTA Fat	81
% Fat	0.18
PTA Pro	52
% Pro	0.09
PTA DPR	0.9
PL	6.3
SCE	6.2
SCR	
SCS	2.56

0 dtrs 0 herds 78% rel

BPI 357 /67%

Type 106 /61%

Mammary 105 /61%

Dtr Fertility 110 /56%

0 dtrs 0 herds

Sire:	Endco Superhero-ET
Dam:	Sandy-Valley No Problem-ET GP81

RRP \$24.00

Physical Trait Evaluation					0 dtrs 0 herds 75% rel
PTA Type	UDC	FLC	TPI	Net Merit \$	
2.19	1.96	0.47	2653	804	
Stature	Short			1.97	Tall
Strength	Narrow			1.27	Wide
Body Depth	Shallow			1.08	Deep
Dairyness	Thick			1.44	Angular
Rump (side View)	High Pins			-0.10	Sloped
Rump Width	Narrow			1.83	Wide
Rear Leg (Side View)	Posty			0.50	Sickled
Rear Leg (Rear View)	Hock In			0.36	Straight
Foot Angle	Low Angle			0.70	Steep Angle
Foot & Leg Score	Low			0.95	High
Fore Udder	Loose			2.53	Strong
Rear Udder Height	Low			2.87	High
Rear Udder Width	Narrow			2.64	Wide
Suspensory Ligament	Weak			1.34	Strong
Udder Depth	Deep			2.16	Shallow
Teats (Front View)	Wide			0.69	Close
Teats (Rear View)	Wide			0.46	Close
Teat Length	Short			0.87	Long

Siemers Bandares Sir-Roz-ET
SIR-ROZ
Bandares x Lottomax
A12

14H013976



Sir-Roz MGGD, Siemers Windbk Rozanne-ET



Siemers Bandares Sir-Roz-ET

PTA Milk	770
PTA Fat	79
% Fat	0.18
PTA Pro	40
% Pro	0.06
PTA DPR	2.2
PL	7.2
SCE	8.5
SCR	
SCS	2.75

0 dtrs 0 herds 80% rel

BPI 334 /66%

Type 106 /61%

Mammary 110 /61%

Dtr Fertility 106 /52%

0 dtrs 0 herds

Sire:	Wa-Del Yoder Bandares-ET
Dam:	Siemers Ltomx S-Roz-An-ET GP83

RRP \$25.00
SEXED \$60.00

Physical Trait Evaluation					0 dtrs 0 herds 78% rel
PTA Type	UDC	FLC	TPI	Net Merit \$	
1.68	2.24	0.69	2640	820	
Stature	Short			0.87	Tall
Strength	Narrow			0.20	Wide
Body Depth	Shallow			-0.06	Deep
Dairyness	Thick			0.46	Angular
Rump (side View)	High Pins			-0.19	Sloped
Rump Width	Narrow			0.60	Wide
Rear Leg (Side View)	Posty			0.05	Sickled
Rear Leg (Rear View)	Hock In			0.77	Straight
Foot Angle	Low Angle			0.70	Steep Angle
Foot & Leg Score	Low			0.81	High
Fore Udder	Loose			2.46	Strong
Rear Udder Height	Low			2.80	High
Rear Udder Width	Narrow			2.58	Wide
Suspensory Ligament	Weak			1.53	Strong
Udder Depth	Deep			2.29	Shallow
Teats (Front View)	Wide			1.60	Close
Teats (Rear View)	Wide			1.70	Close
Teat Length	Short			-1.50	Long

Vogue Letsgo
LETSGO
Applicable x Powerball P
A12

ITLETSGO



Letsgo Dam, OConnors Powerball Lindley VG88



Letsgo MGD, Snowbiz N Uno Lena VG86

PTA Milk	1161
PTA Fat	64
% Fat	0.07
PTA Pro	57
% Pro	0.08
PTA DPR	0.2
PL	3.9
SCE	7.7
SCR	
SCS	2.76

0 dtrs 0 herds 76% rel

BPI 364 /66%

Type 106 /61%

Mammary 108 /61%

Dtr Fertility 111 /52%

0 dtrs 0 herds

Sire:	Stantons Applicable
Dam:	Oconnors Powerball Lindley VG88

RRP \$36.00

Physical Trait Evaluation					0 dtrs 0 herds 75% rel
PTA Type	UDC	FLC	TPI	Net Merit \$	
3.28	3.15	1.57	2640	692	
Stature	Short			2.97	Tall
Strength	Narrow			1.55	Wide
Body Depth	Shallow			1.41	Deep
Dairyness	Thick			1.72	Angular
Rump (side View)	High Pins			1.13	Sloped
Rump Width	Narrow			1.90	Wide
Rear Leg (Side View)	Posty			0.27	Sickled
Rear Leg (Rear View)	Hock In			1.80	Straight
Foot Angle	Low Angle			2.45	Steep Angle
Foot & Leg Score	Low			2.03	High
Fore Udder	Loose			3.84	Strong
Rear Udder Height	Low			4.37	High
Rear Udder Width	Narrow			4.02	Wide
Suspensory Ligament	Weak			2.05	Strong
Udder Depth	Deep			3.39	Shallow
Teats (Front View)	Wide			2.14	Close
Teats (Rear View)	Wide			1.54	Close
Teat Length	Short			-0.29	Long

Sandy-Valley Fedora-ET

14H013980

FEDORA

Bandares x Kingboy

A12

RRP \$25.00
SEXED \$60.00

BPI 311/66%

Type 105/61%

Mammary 107/61%

Dtr
Fertility 107/52%

0 dtrs 0 herds



Sandy-Valley Fedora-ET

Sire: Wa-Del Yoder Bandares-ET

Dam: Sandy-Valley Kb Liberty-ET

Production

0 dtrs 0 herds 79% rel

PTA Milk	PTA Fat	% Fat	PTA Pro	% Pro
722	68	0.15	46	0.09

Health & Reproduction

PTA DPR	PL	SCE	SCR	SCS
1.9	6.3	10.0	0.6	2.54

Physical Trait Evaluation

0 dtrs 0 herds 78% rel

PTA Type	UDC	FLC	TPI	Net Merit \$
1.92	2.08	0.81	2629	738

Stature	Short				1.46	Tall
Strength	Narrow				1.26	Wide
Body Depth	Shallow				0.66	Deep
Dairyness	Thick				0.29	Angular
Rump (side View)	High Pins				0.34	Sloped
Rump Width	Narrow				1.28	Wide
Rear Leg (Side View)	Posty				-1.34	Sickled
Rear Leg (Rear View)	Hock In				1.13	Straight
Foot Angle	Low Angle				1.39	Steep Angle
Foot & Leg Score	Low				0.94	High
Fore Udder	Loose				2.44	Strong
Rear Udder Height	Low				2.78	High
Rear Udder Width	Narrow				2.56	Wide
Suspensory Ligament	Weak				1.39	Strong
Udder Depth	Deep				2.06	Shallow
Teats (Front View)	Wide				1.33	Close
Teats (Rear View)	Wide				1.25	Close
Teat Length	Short				-0.51	Long

Fedora MGGD, Pine-Tree Monica Planeta-ET



Kings-Ransom 1st Dewars-ET

14H07748

DEWARS

Alta1stclass x Doorman

A22

RRP \$24.00
SEXED \$60.00

BPI 104/69%

Type 106/65%

Mammary 111/65%

Dtr
Fertility 107/61%

0 dtrs 0 herds



Dewars MGGD, Kings-Ransom Dorc Dextra-ET

Sire: Zahbulls Alta1stclass-ET

Dam: Kings-Ransom Dm Debonair-ET EX93

Production

0 dtrs 0 herds 80% rel

PTA Milk	PTA Fat	% Fat	PTA Pro	% Pro
-139	52	0.21	16	0.08

Health & Reproduction

PTA DPR	PL	SCE	SCR	SCS
1.1	5.1	6.4	1.0	2.49

Physical Trait Evaluation

0 dtrs 0 herds 80% rel

PTA Type	UDC	FLC	TPI	Net Merit \$
2.32	2.71	1.13	2391	560

Stature	Short				2.55	Tall
Strength	Narrow				0.95	Wide
Body Depth	Shallow				1.17	Deep
Dairyness	Thick				1.59	Angular
Rump (side View)	High Pins				0.96	Sloped
Rump Width	Narrow				1.65	Wide
Rear Leg (Side View)	Posty				-1.84	Sickled
Rear Leg (Rear View)	Hock In				1.20	Straight
Foot Angle	Low Angle				2.33	Steep Angle
Foot & Leg Score	Low				1.53	High
Fore Udder	Loose				3.47	Strong
Rear Udder Height	Low				3.55	High
Rear Udder Width	Narrow				3.27	Wide
Suspensory Ligament	Weak				1.70	Strong
Udder Depth	Deep				3.26	Shallow
Teats (Front View)	Wide				1.71	Close
Teats (Rear View)	Wide				1.72	Close
Teat Length	Short				0.36	Long

Dewars Dam, Kings-Ransom DM Debonair-ET



Al. Ce Merid. Sneaker

ITSNEAKER

SNEAKER

Meridian x Atwood

A22



RRP \$28.00

BPI 17/56%**Type** 109/61%**Mammary** 112/61%**Dtr Fertility** 99/60%

0 dtrs 0 herds

Sneaker Daughter, Casabianca Sneaker Iside

Sire: Sully Hart Meridian-ET**Dam:** Alce Atwood Samuela VG89**Production** 345 dtrs 178 herds 90% rel

PTA Milk	PTA Fat	% Fat	PTA Pro	% Pro
1383	13	-0.14	26	-0.06

Health & Reproduction

PTA DPR	PL	SCE	SCR	SCS
-1.7	0.0	7.8		3.18

Physical Trait Evaluation 214 dtrs 117 herds 87% rel

PTA Type	UDC	FLC	TPI	Net Merit \$
3.48	3.25	1.85	2031	163

Stature	Short				3.16	Tall
Strength	Narrow				1.06	Wide
Body Depth	Shallow				1.81	Deep
Dairyness	Thick				3.57	Angular
Rump (side View)	High Pins				-0.19	Sloped
Rump Width	Narrow				1.65	Wide
Rear Leg (Side View)	Posty				1.26	Sickled
Rear Leg (Rear View)	Hock In				2.51	Straight
Foot Angle	Low Angle				0.81	Steep Angle
Foot & Leg Score	Low				2.45	High
Fore Udder	Loose				3.64	Strong
Rear Udder Height	Low				4.63	High
Rear Udder Width	Narrow				4.26	Wide
Suspensory Ligament	Weak				3.46	Strong
Udder Depth	Deep				2.98	Shallow
Teats (Front View)	Wide				2.71	Close
Teats (Rear View)	Wide				2.73	Close
Teat Length	Short				-0.23	Long

Sneaker Daughter, Magnolia Sneaker Ariel VG85



Mr Chassity Gold Chip-ET

7H10920

GOLD CHIP

Goldwyn x Shottle

A12

RRP \$42.00
SEXED \$75.00**BPI** 25/91%**Type** 106/95%**Mammary** 107/95%**Dtr Fertility** 99/93%

570 dtrs 132 herds

Goldchip Daughter, Jacobs Gold Liann (2)

Sire: Braedale Goldwyn**Dam:** Regancrest S Chassity-ET EX92**Production** 32156 dtrs 9301 herds 99% rel

PTA Milk	PTA Fat	% Fat	PTA Pro	% Pro
-206	0	0.03	-21	-0.05

Health & Reproduction

PTA DPR	PL	SCE	SCR	SCS
-1.1	1.6	5.1	0.7	2.68

Physical Trait Evaluation 18767 dtrs 6203 herds 99% rel

PTA Type	UDC	FLC	TPI	Net Merit \$
2.31	2.22	1.8	1820	88

Stature	Short				2.65	Tall
Strength	Narrow				1.03	Wide
Body Depth	Shallow				0.96	Deep
Dairyness	Thick				1.08	Angular
Rump (side View)	High Pins				0.49	Sloped
Rump Width	Narrow				0.77	Wide
Rear Leg (Side View)	Posty				-1.13	Sickled
Rear Leg (Rear View)	Hock In				2.76	Straight
Foot Angle	Low Angle				1.83	Steep Angle
Foot & Leg Score	Low				2.03	High
Fore Udder	Loose				2.78	Strong
Rear Udder Height	Low				3.27	High
Rear Udder Width	Narrow				3.01	Wide
Suspensory Ligament	Weak				1.49	Strong
Udder Depth	Deep				3.24	Shallow
Teats (Front View)	Wide				0.17	Close
Teats (Rear View)	Wide				-0.24	Close
Teat Length	Short				1.10	Long

Goldchip Daughter, Fairvale Goldchip Melody



Regancrest-Gv S Bradnick-ET

7H10999

BRADNICK

Sanchez x Shottle

A22

RRP \$22.00
SEXED \$52.00

BPI 98/91%

Type 109/96%

Mammary 114/96%

Dtr Fertility 97/93%

622 dtrs 119 herds



Bradnick Daughter, Fairvale Bradnick Josie 118

Sire: Gen-Mark Stmatic Sanchez

Dam: Regancrest Brea-ET TL VG88

Production

22714 dtrs 6724 herds 99% rel

PTA Milk	PTA Fat	% Fat	PTA Pro	% Pro
895	-20	-0.19	14	-0.05

Health & Reproduction

PTA DPR	PL	SCE	SCR	SCS
-2.1	3.0	7.9	0.7	3.1

Physical Trait Evaluation

11120 dtrs 4135 herds 99% rel

PTA Type	UDC	FLC	TPI	Net Merit \$
2.47	2.68	2.47	1910	153

Stature	Short				1.80	Tall
Strength	Narrow				1.32	Wide
Body Depth	Shallow				0.99	Deep
Dairyness	Thick				0.94	Angular
Rump (side View)	High Pins				1.43	Sloped
Rump Width	Narrow				1.50	Wide
Rear Leg (Side View)	Posty				-1.70	Sickled
Rear Leg (Rear View)	Hock In				3.19	Straight
Foot Angle	Low Angle				3.38	Steep Angle
Foot & Leg Score	Low				2.34	High
Fore Udder	Loose				3.97	Strong
Rear Udder Height	Low				3.91	High
Rear Udder Width	Narrow				3.60	Wide
Suspensory Ligament	Weak				1.85	Strong
Udder Depth	Deep				2.42	Shallow
Teats (Front View)	Wide				1.34	Close
Teats (Rear View)	Wide				1.06	Close
Teat Length	Short				3.68	Long

Bradnick Daughter, Horizon Bradnick Ambrosia 2



All.Nure Secretariat

SECRETARIAT

SECRETARIAT

Numero Uno x AltaBaxter

A22

RRP \$36.00
SEXED \$75.00

BPI 259/60%

Type 109/65%

Mammary 111/65%

Dtr Fertility 107/73%

0 dtrs 0 herds



Secretariat Daughter, Fusta Secretariat Urka

Sire: Amighetti Numero Uno-ET

Dam: All.Nure Baxter Silky ET EX91

Production

1034 dtrs 335 herds 90% rel

PTA Milk	PTA Fat	% Fat	PTA Pro	% Pro
361	18	0.02	20	0.03

Health & Reproduction

PTA DPR	PL	SCE	SCR	SCS
1.2	3.3	6.8		2.73

Physical Trait Evaluation

808 dtrs 273 herds 88% rel

PTA Type	UDC	FLC	TPI	Net Merit \$
2.51	3.06	1.6	2243	379

Stature	Short				1.65	Tall
Strength	Narrow				0.69	Wide
Body Depth	Shallow				0.84	Deep
Dairyness	Thick				1.54	Angular
Rump (side View)	High Pins				0.73	Sloped
Rump Width	Narrow				2.46	Wide
Rear Leg (Side View)	Posty				-0.04	Sickled
Rear Leg (Rear View)	Hock In				1.07	Straight
Foot Angle	Low Angle				1.56	Steep Angle
Foot & Leg Score	Low				2.02	High
Fore Udder	Loose				2.81	Strong
Rear Udder Height	Low				4.48	High
Rear Udder Width	Narrow				4.12	Wide
Suspensory Ligament	Weak				3.80	Strong
Udder Depth	Deep				2.20	Shallow
Teats (Front View)	Wide				0.70	Close
Teats (Rear View)	Wide				2.10	Close
Teat Length	Short				1.46	Long

Secretariat Daughter, Fusta Secretariat Urka

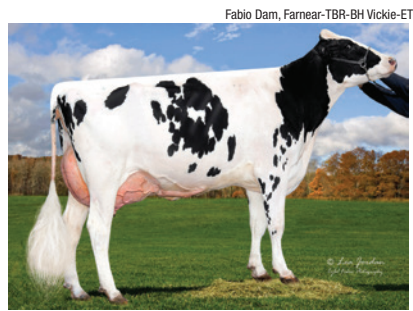


Leaninghouse Fabio 22171-ET
7H012987

FABIO

Franchise x Supersire

A12



PTA Milk	1426
PTA Fat	51
% Fat	-0.01
PTA Pro	45
% Pro	0.01
PTA DPR	1.8
PL	6.2
SCE	5.4
SCR	0.9
SCS	2.76

0 dtrs 0 herds 81% rel

BPI	264	/68%
-----	-----	------

Type	103	/64%
------	-----	------

Mammary	108	/64%
---------	-----	------

Dtr Fertility	110	/59%
---------------	-----	------

0 dtrs 0 herds

Sire: Ocd Rodgers Franchise-ET
Dam: Farnear-Tbr-Bh Vickie-ET EX92

RRP \$22.00

Physical Trait Evaluation

0 dtrs 0 herds 80% rel

PTA Type	UDC	FLC	TPI	Net Merit \$
1.97	2.18	0.96	2523	687

Stature	Short			1.68	Tail
Strength	Narrow			0.80	Wide
Body Depth	Shallow			0.41	Deep
Dairyness	Thick			0.67	Angular
Rump (side View)	High Pins			-0.52	Sloped
Rump Width	Narrow			1.31	Wide
Rear Leg (Side View)	Posty			-1.08	Sickled
Rear Leg (Rear View)	Hock In			-1.13	Straight
Foot Angle	Low Angle			1.52	Steep Angle
Foot & Leg Score	Low			1.18	High
Fore Udder	Loose			2.79	Strong
Rear Udder Height	Low			2.82	High
Rear Udder Width	Narrow			2.59	Wide
Suspensory Ligament	Weak			1.21	Strong
Udder Depth	Deep			2.51	Shallow
Teats (Front View)	Wide			1.36	Close
Teats (Rear View)	Wide			1.45	Close
Teat Length	Short			-0.74	Long

Anderstrup Clash
CLASHP

CLASH P

Powerball P x Bookem

A22



PTA Milk	1230
PTA Fat	44
% Fat	-0.01
PTA Pro	55
% Pro	0.06
PTA DPR	1.0
PL	4.1
SCE	5.5
SCR	
SCS	2.8

0 dtrs 0 herds 80% rel

BPI	267	/68%
-----	-----	------

Type	99	/64%
------	----	------

Mammary	100	/64%
---------	-----	------

Dtr Fertility	109	/58%
---------------	-----	------

0 dtrs 0 herds

Sire: View-Home Powerball-P-ET
Dam: Anderstrup Bookem Carmen EX91

RRP \$20.00

Physical Trait Evaluation

0 dtrs 0 herds 77% rel

PTA Type	UDC	FLC	TPI	Net Merit \$
1.82	1.53	0.66	2447	621

Stature	Short			2.04	Tail
Strength	Narrow			-0.14	Wide
Body Depth	Shallow			0.45	Deep
Dairyness	Thick			2.62	Angular
Rump (side View)	High Pins			0.44	Sloped
Rump Width	Narrow			0.92	Wide
Rear Leg (Side View)	Posty			1.75	Sickled
Rear Leg (Rear View)	Hock In			0.66	Straight
Foot Angle	Low Angle			0.31	Steep Angle
Foot & Leg Score	Low			1.18	High
Fore Udder	Loose			1.92	Strong
Rear Udder Height	Low			2.29	High
Rear Udder Width	Narrow			2.11	Wide
Suspensory Ligament	Weak			0.92	Strong
Udder Depth	Deep			1.77	Shallow
Teats (Front View)	Wide			1.20	Close
Teats (Rear View)	Wide			0.85	Close
Teat Length	Short			0.07	Long

Regancrest Outlast PP-ET
OUTLAST PP

OUTLAST PP

Powerball-P x Predestine

A12



PTA Milk	740
PTA Fat	33
% Fat	0.02
PTA Pro	43
% Pro	0.07
PTA DPR	2.6
PL	2.6
SCE	6.0
SCR	
SCS	2.95

0 dtrs 0 herds 80% rel

BPI	240	/68%
-----	-----	------

Type	103	/64%
------	-----	------

Mammary	103	/64%
---------	-----	------

Dtr Fertility	109	/58%
---------------	-----	------

0 dtrs 0 herds

Sire: View-Home Powerball-P-ET
Dam: Regancrest Opines Opal-ET

RRP \$18.00

Physical Trait Evaluation

0 dtrs 0 herds 79% rel

PTA Type	UDC	FLC	TPI	Net Merit \$
1.08	1.19	0.71	2284	473

Stature	Short			1.45	Tail
Strength	Narrow			0.53	Wide
Body Depth	Shallow			0.08	Deep
Dairyness	Thick			0.01	Angular
Rump (side View)	High Pins			1.01	Sloped
Rump Width	Narrow			0.02	Wide
Rear Leg (Side View)	Posty			-0.16	Sickled
Rear Leg (Rear View)	Hock In			0.49	Straight
Foot Angle	Low Angle			1.12	Steep Angle
Foot & Leg Score	Low			1.03	High
Fore Udder	Loose			1.52	Strong
Rear Udder Height	Low			1.87	High
Rear Udder Width	Narrow			1.72	Wide
Suspensory Ligament	Weak			0.13	Strong
Udder Depth	Deep			1.62	Shallow
Teats (Front View)	Wide			0.45	Close
Teats (Rear View)	Wide			0.11	Close
Teat Length	Short			-0.29	Long

Go-Farm Innuendo
ITINNUENDO

INNUENDO

Altatoohot x Superman

A12



PTA Milk	1581
PTA Fat	101
% Fat	0.15
PTA Pro	66
% Pro	0.06
PTA DPR	-1.2
PL	2.4
SCE	6.6
SCR	
SCS	2.91

0 dtrs 0 herds 76% rel

BPI	313	/66%
-----	-----	------

Type	107	/60%
------	-----	------

Mammary	107	/60%
---------	-----	------

Dtr Fertility	106	/52%
---------------	-----	------

0 dtrs 0 herds

Sire: Peak Altatoohot-ET
Dam: Kns Inka-ET

RRP \$22.00

Physical Trait Evaluation

0 dtrs 0 herds 74% rel

PTA Type	UDC	FLC	TPI	Net Merit \$
2.18	1.82	0.34	2582	760

Stature	Short			2.68	Tail
Strength	Narrow			1.64	Wide
Body Depth	Shallow			1.83	Deep
Dairyness	Thick			2.02	Angular
Rump (side View)	High Pins			1.03	Sloped
Rump Width	Narrow			1.79	Wide
Rear Leg (Side View)	Posty			0.50	Sickled
Rear Leg (Rear View)	Hock In			0.96	Straight
Foot Angle	Low Angle			0.92	Steep Angle
Foot & Leg Score	Low			0.78	High
Fore Udder	Loose			2.60	Strong
Rear Udder Height	Low			2.48	High
Rear Udder Width	Narrow			2.28	Wide
Suspensory Ligament	Weak			2.36	Strong
Udder Depth	Deep			2.21	Shallow
Teats (Front View)	Wide			2.59	Close
Teats (Rear View)	Wide			3.04	Close
Teat Length	Short			-1.03	Long

Lirr Drew Dempsey

7H9264

DEMPSEY

Goldwyn x Derry

A12



RRP \$30.00

BPI 157/91%**Type** 106/97%**Mammary** 107/97%**Dtr Fertility** 101/94%

704 dtrs 140 herds



Dempsey Daughter, TK-Plain-View Ripley

Sire: Braedale Goldwyn**Dam:** Kerndt Sneezey Derry Drew VG88**Production**

38709 dtrs 11100 herds 99% rel

PTA Milk	PTA Fat	% Fat	PTA Pro	% Pro
-347	15	0.10	9	0.07

Health & Reproduction

PTA DPR	PL	SCE	SCR	SCS
-1.3	-0.9	8.7	-3.0	2.65

Physical Trait Evaluation

27080 dtrs 8059 herds 99% rel

PTA Type	UDC	FLC	TPI	Net Merit \$
2.34	1.77	1.57	1917	108

Stature	Short				2.34	Tall
Strength	Narrow				1.65	Wide
Body Depth	Shallow				1.76	Deep
Dairyness	Thick				1.82	Angular
Rump (side View)	High Pins				0.72	Sloped
Rump Width	Narrow				1.63	Wide
Rear Leg (Side View)	Posty				-0.58	Sickled
Rear Leg (Rear View)	Hock In				1.93	Straight
Foot Angle	Low Angle				1.77	Steep Angle
Foot & Leg Score	Low				1.90	High
Fore Udder	Loose				2.10	Strong
Rear Udder Height	Low				2.76	High
Rear Udder Width	Narrow				2.54	Wide
Suspensory Ligament	Weak				2.02	Strong
Udder Depth	Deep				1.74	Shallow
Teats (Front View)	Wide				0.89	Close
Teats (Rear View)	Wide				1.18	Close
Teat Length	Short				-0.41	Long

Dempsey Daughter, Co-Vale Dempsey Dina 4270



Fustead Goldwyn Guthrie-ET

7H9420

GUTHRIE

Goldwyn x Blitz

A12



RRP \$20.00

BPI 194/93%**Type** 107/98%**Mammary** 110/98%**Dtr Fertility** 101/96%

2475 dtrs 323 herds



Guthrie Daughter, Wargo-Acres Guth Manatee-ET

Sire: Braedale Goldwyn**Dam:** Regancrest-Mws Brit-ET EX90**Production**

26696 dtrs 4836 herds 99% rel

PTA Milk	PTA Fat	% Fat	PTA Pro	% Pro
-53	15	0.06	10	0.04

Health & Reproduction

PTA DPR	PL	SCE	SCR	SCS
-0.6	0.8	6.2	-3.2	2.86

Physical Trait Evaluation

9234 dtrs 2541 herds 99% rel

PTA Type	UDC	FLC	TPI	Net Merit \$
2.51	2.24	1.34	1977	181

Stature	Short				1.91	Tall
Strength	Narrow				0.49	Wide
Body Depth	Shallow				1.21	Deep
Dairyness	Thick				2.52	Angular
Rump (side View)	High Pins				0.60	Sloped
Rump Width	Narrow				2.95	Wide
Rear Leg (Side View)	Posty				1.73	Sickled
Rear Leg (Rear View)	Hock In				1.25	Straight
Foot Angle	Low Angle				1.08	Steep Angle
Foot & Leg Score	Low				1.76	High
Fore Udder	Loose				2.87	Strong
Rear Udder Height	Low				3.13	High
Rear Udder Width	Narrow				2.88	Wide
Suspensory Ligament	Weak				2.98	Strong
Udder Depth	Deep				1.36	Shallow
Teats (Front View)	Wide				1.75	Close
Teats (Rear View)	Wide				1.83	Close
Teat Length	Short				0.16	Long

Guthrie Daughter, Luck-E Guthrie Kleopatra



Sunquest Barcuda-PP-RED-ET 7H012982

BARCUDA PP RED

JAX P*RC x Numero Uno A22



Barcuda-PP-RED



PTA Milk	1120
PTA Fat	37
% Fat	-0.02
PTA Pro	41
% Pro	0.02
PTA DPR	0.2
PL	5.1
SCE	7.7
SCR	1.4
SCS	2.66

0 dtrs 0 herds 79% rel

BPI 207 /67%

Type 103 /62%

Mammary 103 /62%

Dtr Fertility 106 /55%

0 dtrs 0 herds

Sire: Dangie S-Sire JAX P
Dam: Ri-Val-Re Uno Boots-ET

RRP \$20.00
SEXED \$55.00

Physical Trait Evaluation					0 dtrs 0 herds 77% rel	
PTA Type	UDC	FLC	TPI	Net Merit \$		
1.06	1.20	0.41	2256	526		
Stature	Short			0.84	Tail	
Strength	Narrow			-0.43	Wide	
Body Depth	Shallow			-0.33	Deep	
Dairyness	Thick			1.01	Angular	
Rump (side View)	High Pins			-0.63	Sloped	
Rump Width	Narrow			1.00	Wide	
Rear Leg (Side View)	Posty			0.63	Sickled	
Rear Leg (Rear View)	Hock In			0.02	Straight	
Foot Angle	Low Angle			0.35	Steep Angle	
Foot & Leg Score	Low			0.70	High	
Fore Udder	Loose			1.18	Strong	
Rear Udder Height	Low			1.99	High	
Rear Udder Width	Narrow			1.83	Wide	
Suspensory Ligament	Weak			0.39	Strong	
Udder Depth	Deep			1.05	Shallow	
Teats (Front View)	Wide			-0.11	Close	
Teats (Rear View)	Wide			-0.02	Close	
Teat Length	Short			-0.09	Long	

Siemers Oct Apple-Crisp-ET 07H013778

APPLE-CRISP RC

High Octane x Mogul A12



Apple Crisp MGGD, KHW Regiment Apple-Red



PTA Milk	780
PTA Fat	39
% Fat	0.04
PTA Pro	19
% Pro	-0.02
PTA DPR	-1.3
PL	1.0
SCE	7.4
SCR	2.2
SCS	2.94

0 dtrs 0 herds 81% rel

BPI 134 /69%

Type 108 /65%

Mammary 111 /65%

Dtr Fertility 104 /59%

0 dtrs 0 herds

Sire: Stantons High Octane
Dam: Siemers Mogul Apple-Star-ET RC EX90

RRP \$24.00
SEXED \$65.00

Physical Trait Evaluation					0 dtrs 0 herds 80% rel	
PTA Type	UDC	FLC	TPI	Net Merit \$		
3.04	2.68	1.41	2142	299		
Stature	Short			3.03	Tail	
Strength	Narrow			1.88	Wide	
Body Depth	Shallow			2.06	Deep	
Dairyness	Thick			1.95	Angular	
Rump (side View)	High Pins			0.65	Sloped	
Rump Width	Narrow			2.22	Wide	
Rear Leg (Side View)	Posty			0.34	Sickled	
Rear Leg (Rear View)	Hock In			1.89	Straight	
Foot Angle	Low Angle			1.83	Steep Angle	
Foot & Leg Score	Low			1.88	High	
Fore Udder	Loose			3.45	Strong	
Rear Udder Height	Low			4.09	High	
Rear Udder Width	Narrow			3.76	Wide	
Suspensory Ligament	Weak			1.61	Strong	
Udder Depth	Deep			3.05	Shallow	
Teats (Front View)	Wide			1.33	Close	
Teats (Rear View)	Wide			0.82	Close	
Teat Length	Short			-1.67	Long	

Mountfield SSI Dcy Mogul-ET 7H11314

MOGUL

Dorcy x Marsh A12



Mogul Daughter, Cookiecutter Mogul Handy-ET



PTA Milk	1123
PTA Fat	73
% Fat	0.11
PTA Pro	37
% Pro	0.01
PTA DPR	-1.7
PL	2.5
SCE	6
SCR	-1.8
SCS	3.02

51102 dtrs 8475 herds 99% rel

BPI 233 /91%

Type 109 /94%

Mammary 111 /94%

Dtr Fertility 102 /93%

0 dtrs 0 herds

Sire: Coyne-Farms Dorcy-ET
Dam: Mountfield Marsh Maxine-ET VG88

RRP \$42.00
SEXED \$68.00

Physical Trait Evaluation					120166 dtrs 5066 herds 99% rel	
PTA Type	UDC	FLC	TPI	Net Merit \$		
2.16	3.11	2.03	2387	587		
Stature	Short			0.41	Tail	
Strength	Narrow			0.12	Wide	
Body Depth	Shallow			0.38	Deep	
Dairyness	Thick			1.52	Angular	
Rump (side View)	High Pins			0.34	Sloped	
Rump Width	Narrow			0.12	Wide	
Rear Leg (Side View)	Posty			-2.36	Sickled	
Rear Leg (Rear View)	Hock In			2.38	Straight	
Foot Angle	Low Angle			2.28	Steep Angle	
Foot & Leg Score	Low			1.75	High	
Fore Udder	Loose			3.39	Strong	
Rear Udder Height	Low			4.46	High	
Rear Udder Width	Narrow			4.10	Wide	
Suspensory Ligament	Weak			0.71	Strong	
Udder Depth	Deep			1.85	Shallow	
Teats (Front View)	Wide			1.72	Close	
Teats (Rear View)	Wide			1.36	Close	
Teat Length	Short			-1.64	Long	

Go-Farm Royal Eudon ITEUDON

EUDON

Million x Shottle A12



Eudon Daughter, Bas Farm Eudon Uganda



PTA Milk	67
PTA Fat	35
% Fat	0.12
PTA Pro	5
% Pro	0.01
PTA DPR	-1.5
PL	0.3
SCE	7.5
SCR	
SCS	2.97

6354 dtrs 1465 herds 94% rel

BPI 87 /73%

Type 107 /79%

Mammary 106 /79%

Dtr Fertility 102 /83%

0 dtrs 0 herds

Sire: England-Ammon Million-ET
Dam: Wabash-Way Emilyann-ET VG88

RRP \$24.00

Physical Trait Evaluation					4397 dtrs 1105 herds 92% rel	
PTA Type	UDC	FLC	TPI	Net Merit \$		
1.64	1.75	0.15	1847	180		
Stature	Short			2.51	Tail	
Strength	Narrow			2.31	Wide	
Body Depth	Shallow			1.82	Deep	
Dairyness	Thick			0.47	Angular	
Rump (side View)	High Pins			0.98	Sloped	
Rump Width	Narrow			1.90	Wide	
Rear Leg (Side View)	Posty			-0.36	Sickled	
Rear Leg (Rear View)	Hock In			0.32	Straight	
Foot Angle	Low Angle			1.18	Steep Angle	
Foot & Leg Score	Low			0.64	High	
Fore Udder	Loose			3.08	Strong	
Rear Udder Height	Low			1.96	High	
Rear Udder Width	Narrow			1.80	Wide	
Suspensory Ligament	Weak			1.92	Strong	
Udder Depth	Deep			2.41	Shallow	
Teats (Front View)	Wide			2.70	Close	
Teats (Rear View)	Wide			2.86	Close	
Teat Length	Short			-0.53	Long	

moving genetics forward

NM\$ +662
04/2019 GENOMIC SUMMARY

Milk	+1134	94%R
Fat	+77	+0.12%
Protein	+48	+0.05%
SCS	+2.93	
PL	+4.8	
DPR	+0.8	
HCR	+0.0	
CCR	+1.5	

Net Merit \$	+662
Cheese Merit \$	+669
F Effic.	+168
Fert. Index	+0.8
CL	+1.2
EFI	8.3%

239 DTRS / 78 HERDS

JSGLAMOR

IHG GLAMOR-ET • 534HO00038
Cashcoin X Supersire X Superstition • DOB: 21-APR-2014 • REG# USA840003010356563
GTPI +2389
04/2019 HA TYPE SUMMARY

PTAT	+1.51	86%R	UDC	+0.71	FLC	+0.09	88 DTRS
							32 HERDS

SCE +6.6%
04/2019 CALVING SUMMARY

SCE	6.6%	92%R	429 Obs	0 Dtr	aAa	234
DCE	5.1%	76%R	52 Obs	52 Dtr	DMS	135
SSB	7.2%	81%R	365 Obs	0 Dtr	KCN	AB
DSB	4.4%	72%R	40 Obs	40 Dtr	BCN	A1A2
GL	-2.0					

New Traits
04/2019 HEALTH SUMMARY

Milk fever (hypocalcemia)	-0.2%
Displaced abomasum	N/A
Ketosis	+0.1%
Mastitis	+0.8%
Metritis	+0.9%
Retained placenta	N/A

Stature	+2.03	Tall
Strength	+0.75	Strong
Body Depth	+1.30	Deep
Dairy Form	+2.46	Open Rib
Rump Angle	+0.70	Sloped
Thurl Width	+1.50	Wide
Rear Legs-Side View	+1.30	Sickle
Rear Legs-Rear View	+0.03	Straight
Foot Angle	-0.48	Low
Feet & Legs Score	+0.49	High
Fore Udder Attachment	+0.78	Strong
Rear Udder Height	+1.84	High
Rear Udder Width	+1.69	Wide
Udder Cleft	+2.00	Strong
Udder Depth	-0.04	Deep
Front Teat Placement	+1.39	Close
Rear Teat Placement	+1.67	Close
Teat Length	-0.33	Short




\$22.00


JSNINJA

PEAK NINJA-ET • 734HO00102
Hotline X Altaspring X Supersire • DOB: 30-AUG-2017 • REG: HO840M003145230074
\$26.00




Stature	+2.57	Tall
Strength	+1.21	Strong
Body Depth	+1.34	Deep
Dairy Form	+1.96	Open Rib
Rump Angle	-0.06	High Pins
Thurl Width	+2.26	Wide
Rear Legs-Side View	-0.74	Posty
Rear Legs-Rear View	+2.44	Straight
Foot Angle	+2.42	Steep
Feet & Legs Score	+2.15	High
Fore Udder Attachment	+3.62	Strong
Rear Udder Height	+4.40	High
Rear Udder Width	+4.05	Wide
Udder Cleft	+2.58	Strong
Udder Depth	+2.72	Shallow
Front Teat Placement	+2.17	Close
Rear Teat Placement	+2.41	Close
Teat Length	-0.44	Short

04/2019 GENOMIC SUMMARY
NM\$ +752

Milk	+1547	77%R
Fat	+74	+0.06%
Protein	+61	+0.05%
SCS	+2.83	74%R
PL	+3.8	73%R
DPR	-0.3	72%R
HCR	+1.2	
CCR	+1.7	

Net Merit \$	+752
Cheese Merit \$	+780
F Effic.	+172
Fert. Index	+0.3
CL	+0.7
EFI	+8.4%

0 DTRS / 0 HERDS
04/2019 HA TYPE SUMMARY
GTPI +2680

PTAT	+3.02	76%R	UDC	+3.10	FLC	+1.90	0 DTRS
							0 HERDS

04/2019 CALVING SUMMARY
SCE +6.2%

SCE	6.2%	63%R	0 Obs	0 Dtr
DCE	3.5%	58%R	0 Obs	0 Dtr
SSB	7.4%	59%R	0 Obs	0 Dtr
DSB	4.7%	56%R	0 Obs	0 Dtr
GL	-3.0			

aAa	342
DMS	126.561
KCN	AA
BCN	A2A2

04/2019 HEALTH SUMMARY
New Traits

Milk fever (hypocalcemia)	-0.3%
Displaced abomasum	+0.4%
Ketosis	+0.3%
Mastitis	+1.0%
Metritis	+0.8%
Retained placenta	+0.1%

JS COLD PO

ERNEST ANTHONY COLD-ET PO • 534HO00068



Powerball-P X Beluga X Bookem
DOB: 21-AUG-2015
REG# HO840003129038274

aAa 132
DMS 234,123
KCN AB
BCN A2A2

0 DTRS / 0 HERDS

GTPI +2506

GENOMIC SUMMARY

Milk +1071 80%R
Fat +53 +0.05%
Protein +51 +0.07%
SCS +3.00 DPR +2.0
PL +2.6 HCR +3.4
CL -0.3 CCR +3.3

Net Merit \$ +568
Ch. Merit \$ +598
F Effic. 135
Fert. Index 2.5%
EFI 7.7%

HA TYPE SUMMARY • CALVING SUMMARY

PTAT +2.60 79%R
UDC +2.33
FLC +1.28

SCE 7.4% DSB 5.3%
DCE 4.1% GL +0.0
SSB 7.9%

HEALTH SUMMARY • NEW TRAITS • 04/2019

Milk Fever (hypocalcemia) -0.2%
Displaced Abomasum -0.2%
Retained Placenta -0.1%
Ketosis N/A
Mastitis -1.8%
Metritis +2.0%

Stature +2.29
Strength +1.24
Body Depth +1.50
Dairy Form +1.89
Rump Angle +0.38
Thurl Width +1.95
Rear Legs-Side View +0.96
Rear Legs-Rear View +1.33
Foot Angle +1.54
Feet & Legs Score +1.71
Fore Udder Attachment +3.35
Rear Udder Height +3.09
Rear Udder Width +2.84
Udder Cleft +1.35
Udder Depth +2.45
Front Teat Placement +0.93
Rear Teat Placement +1.53
Teat Length -0.21

\$24.00

JS WOODFORD

MIDAS-TOUCH WOODFORD-ET • 734HO00095



Bourbon X Rubicon X Supersire
DOB: 25-AUG-2017
REG: HO840M003141135083

aAa 342
DMS 345,135
KCN AA
BCN A2A2

0 DTRS / 0 HERDS



GTPI +2703

GENOMIC SUMMARY

Milk +1762 79%R
Fat +87 +0.07%
Protein +59 +0.02%
SCS +2.72 DPR +0.5
PL +5.6 HCR +1.3
CL +1.1 CCR +3.2

Net Merit \$ +825
Ch. Merit \$ +841
F Effic. +189
Fert. Index +1.1
EFI +8.4%

HA TYPE SUMMARY • CALVING SUMMARY

PTAT +2.55 76%R
UDC +2.34
FLC +1.50

SCE 7.2% DSB 5.1%
DCE 5.9% GL -2.0
SSB 6.8%

HEALTH SUMMARY • NEW TRAITS • 04/2019

Milk Fever (hypocalcemia) -0.1%
Displaced Abomasum +0.4%
Retained Placenta +0.1%
Ketosis +0.1%
Mastitis -0.2%
Metritis +0.7%

Stature +1.41
Strength +1.12
Body Depth +1.21
Dairy Form +1.87
Rump Angle -0.49
Thurl Width +0.32
Rear Legs-Side View -0.34
Rear Legs-Rear View +1.60
Foot Angle +1.38
Feet & Legs Score +1.68
Fore Udder Attachment +2.47
Rear Udder Height +3.43
Rear Udder Width +3.16
Udder Cleft +2.25
Udder Depth +1.29
Front Teat Placement +2.30
Rear Teat Placement +2.75
Teat Length -0.49

\$60.00

JS EXETER

PEAK EXETER-ET • 734HO00089



Bourbon X Altaspring X Supersire
DOB: 26-FEB-2017
REG: HO840003138498825

aAa 243
DMS 245,135
KCN AA
BCN A2A2

0 DTRS / 0 HERDS



GTPI +2630

GENOMIC SUMMARY

Milk +1202 79%R
Fat +88 +0.15%
Protein +48 +0.04%
SCS +2.74 DPR +2.2
PL +4.8 HCR +3.3
CL -0.2 CCR +3.2

Net Merit \$ +753
Ch. Merit \$ +778
F Effic. +165
Fert. Index +2.6
EFI 8.2%

HA TYPE SUMMARY • CALVING SUMMARY

PTAT +2.17 76%R
UDC +1.76
FLC +0.81

SCE 7.7% DSB 4.0%
DCE 4.5% GL -1.0
SSB 7.0%

HEALTH SUMMARY • NEW TRAITS • 04/2019

Milk Fever (hypocalcemia) -0.2%
Displaced Abomasum +0.4%
Retained Placenta +0.3%
Ketosis +0.3%
Mastitis N/A
Metritis +0.3%

Stature +1.45
Strength +1.99
Body Depth +1.59
Dairy Form +1.34
Rump Angle -0.25
Thurl Width +1.29
Rear Legs-Side View -0.67
Rear Legs-Rear View +1.34
Foot Angle +0.99
Feet & Legs Score +0.92
Fore Udder Attachment +2.37
Rear Udder Height +2.68
Rear Udder Width +2.47
Udder Cleft +0.86
Udder Depth +1.30
Front Teat Placement +1.04
Rear Teat Placement +0.44
Teat Length -0.46

\$36.00

JS SALVATORE RC

MR SALVATORE-ET RC • 534HO00061



Supershot X Sympatico X Snowman
DOB: 04-MAY-2015
REG# HO840003129037884

aAa 354
DMS 123,126
KCN BE
BCN A1A1

0 DTRS / 0 HERDS



GTPI +2586

GENOMIC SUMMARY

Milk +2034 80%R
Fat +65 -0.04%
Protein +57 -0.02%
SCS +2.62 DPR +0.7
PL +6.2 HCR +0.6
CL +2.6 CCR +0.7

Net Merit \$ +763
Ch. Merit \$ +765
F Effic. +146
Fert. Index +0.7
EFI 8.5%

HA TYPE SUMMARY • CALVING SUMMARY

PTAT +1.86 79%R
UDC +1.65
FLC +1.73

SCE 5.2% DSB 4.3%
DCE 3.2% GL -3.0
SSB 6.7%

HEALTH SUMMARY • NEW TRAITS • 04/2019

Milk Fever (hypocalcemia) -0.2%
Displaced Abomasum +0.8%
Retained Placenta +0.0
Ketosis +0.6%
Mastitis -0.4%
Metritis +1.0%

Stature +1.56
Strength +1.09
Body Depth +0.70
Dairy Form +1.16
Rump Angle +0.25
Thurl Width +1.11
Rear Legs-Side View -0.43
Rear Legs-Rear View +2.11
Foot Angle +1.60
Feet & Legs Score +1.85
Fore Udder Attachment +2.27
Rear Udder Height +2.91
Rear Udder Width +2.68
Udder Cleft +0.10
Udder Depth +1.20
Front Teat Placement +0.39
Rear Teat Placement +0.04
Teat Length +0.83

\$24.00

JSYOLO

BGP YOLO-ET • 734HO00091

Bandares X Meridian X Robust • DOB: 16-JULY-2017 • REG# HO840M003145398965

\$50.00



Stature	+0.94	Tall
Strength	+0.11	Strong
Body Depth	+0.13	Deep
Dairy Form	+1.18	Open Rib
Rump Angle	+0.30	Sloped
Thurl Width	+1.64	Wide
Rear Legs-Side View	+0.51	Sickle
Rear Legs-Rear View	+0.60	Straight
Foot Angle	+0.47	Steep
Feet & Legs Score	+1.03	High
Fore Udder Attachment	+3.51	Strong
Rear Udder Height	+4.06	High
Rear Udder Width	+3.74	Wide
Udder Cleft	+2.06	Strong
Udder Depth	+2.91	Shallow
Front Teat Placement	+2.41	Close
Rear Teat Placement	+2.60	Close
Teat Length	-1.48	Short

04/2019 GENOMIC SUMMARY

NM\$ +850

Milk	+1076	80%R
Fat	+84	+0.16%
Protein	+44	+0.04%
SCS	+2.76	78%R
PL	+6.3	75%R
DPR	+1.7	74%R
HCR	+4.0	
CCR	+3.6	

Net Merit \$	+850
Cheese Merit \$	+874
F Effic.	+173
Fert. Index	+2.5
CL	+2.6
EFI	+8.1%

0 DTRS / 0 HERDS

04/2019 HA TYPE SUMMARY

GTPI +2742

PTAT +2.65	79%R	UDC +3.23	FLC +0.78	0 DTRS	0 HERDS
------------	------	-----------	-----------	--------	---------

04/2019 CALVING SUMMARY

SCE +7.6%

SCE	7.6%	64%R	0 Obs	0 Dtr
DCE	4.1%	62%R	0 Obs	0 Dtr
SSB	6.7%	61%R	0 Obs	0 Dtr
DSB	4.2%	61%R	0 Obs	0 Dtr
GL	+0.0			

aAa	324
DMS	345,135
KCN	BB
BCN	A2A2

04/2019 HEALTH SUMMARY

New Traits

Milk fever (hypocalcemia)	-0.1%	Ketosis	+0.3%
Displaced abomasum	+0.3%	Mastitis	+0.2%
Retained placenta	+0.0%	Metritis	+0.7%

NM\$ +609

04/2019 GENOMIC SUMMARY

Milk	+593	98%R
Fat	+61	+0.14%
Protein	+34	+0.06%
SCS	+2.84	97%R
PL	+3.2	91%R
DPR	+2.0	93%R
HCR	+3.8	
CCR	+4.2	

Net Merit \$	+609
Cheese Merit \$	+638
F Effic.	+126
Fert. Index	+2.7
CL	+0.2
EFI	9.0%

3426 DTRS / 1176 HERDS

GTPI +2477

04/2019 HA TYPE SUMMARY

PTAT +1.67	97%R	UDC +2.87	FLC +1.10	2028 DTRS	710 HERDS
------------	------	-----------	-----------	-----------	-----------

SCE +6.6%

04/2019 CALVING SUMMARY

SCE	6.6%	97%R	5178 Obs	0 Dtr
DCE	5.1%	94%R	554 Obs	0 Dtr
SSB	8.1%	93%R	4012 Obs	0 Dtr
DSB	5.7%	92%R	457 Obs	0 Dtr
GL	+0.0			

aAa	135642
DMS	123,126
KCN	AE
BCN	A1A2

New Traits

04/2019 HEALTH SUMMARY

Milk fever (hypocalcemia)	-0.3%	Ketosis	+0.4%
Displaced abomasum	+1.1%	Mastitis	+0.4%
Retained placenta	+0.4%	Metritis	+1.2%

JSMARDI GRAS

MR MOVIESTAR MARDI GRAS-ET • 534HO00025

Mogul X Planet X Shottle • DOB: 01-OCT-2012 • REG# USA71494657



\$24.00

Stature	+0.54	Tall
Strength	+0.27	Strong
Body Depth	+0.04	Shallow
Dairy Form	+0.03	Open Rib
Rump Angle	+1.13	Sloped
Thurl Width	+1.47	Wide
Rear Legs-Side View	-1.18	Posty
Rear Legs-Rear View	+1.42	Straight
Foot Angle	+1.40	Steep
Feet & Legs Score	+0.97	High
Fore Udder Attachment	+3.66	Strong
Rear Udder Height	+3.14	High
Rear Udder Width	+2.89	Wide
Udder Cleft	+0.79	Strong
Udder Depth	+2.92	Shallow
Front Teat Placement	+1.83	Close
Rear Teat Placement	+1.58	Close
Teat Length	-0.24	Short



04/2019 GENOMIC SUMMARY

NM\$ +792

Milk	+1611	80%R
Fat	+83	+0.08%
Protein	+60	+0.04%
SCS	+2.71	77%R
PL	+5.6	74%R
DPR	+0.5	74%R
HCR	+1.7	
CCR	+2.6	

Net Merit \$	+792
Cheese Merit \$	+818
F Effic.	+191
Fert. Index	+1.1
CL	+1.3
EFI	8.6%

0 DTRS / 0 HERDS

04/2019 HA TYPE SUMMARY

GTPI +2608

PTAT +1.56	78%R	UDC +1.87	FLC +0.58	0 DTRS	0 HERDS
------------	------	-----------	-----------	--------	---------

04/2019 CALVING SUMMARY

SCE +6.7%

SCE	7.9%	91%R	364 Obs	0 Dtr
DCE	6.0%	68%R	0 Obs	0 Dtr
SSB	7.1%	80%R	276 Obs	0 Dtr
DSB	5.7%	64%R	0 Obs	0 Dtr
GL	-0.4			

aAa	432
DMS	N/A
KCN	AB
BCN	A1A2

04/2019 HEALTH SUMMARY

New Traits

Milk fever (hypocalcemia)	-0.2%	Ketosis	+0.6%
Displaced abomasum	+0.6%	Mastitis	-0.5%
Retained placenta	+0.2%	Metritis	+0.6%

JSMMASTERMIND

MR MASTERMIND-ET • 734HO00083

Montana X Supersire X Bookem • DOB: 7-JUL-2016 • REG# HO840003133065125

\$26.00



Stature	+0.45	Tall
Strength	+0.57	Strong
Body Depth	+0.36	Deep
Dairy Form	+0.94	Open Rib
Rump Angle	-0.12	High Pins
Thurl Width	+0.30	Wide
Rear Legs-Side View	-0.46	Posty
Rear Legs-Rear View	+0.36	Straight
Foot Angle	+0.48	Steep
Feet & Legs Score	+0.69	High
Fore Udder Attachment	+1.90	Strong
Rear Udder Height	+2.83	High
Rear Udder Width	+2.60	Wide
Udder Cleft	+0.81	Strong
Udder Depth	+0.95	Shallow
Front Teat Placement	+0.49	Close
Rear Teat Placement	+0.83	Close
Teat Length	+0.69	Long

JS SUPERHERO

ENDCO SUPERHERO-ET • 534HO00052



Supershot X Numero Uno X Shamrock
DOB: 14-FEB-2015
REG# HO840003129037603

aAa 432
DMS 123,135
KCN BE
BCN A1A2

30 DTRS / 18 HERDS



GTPI +2628

GENOMIC SUMMARY

Milk +1271 88%R
Fat +65 +0,06%
Protein +52 +0,05%
SCS +2,66 DPR +3,1
PL +6,8 HCR +2,3
CL +2,0 CCR +4,2

Net Merit \$ +756
Ch. Merit \$ +786
F Effic. +148
Fert. Index +3,2
EFI 8,5%

HA TYPE SUMMARY • CALVING SUMMARY

PTAT +2,00 79%R
UDC +1,91
FLC +0,33

SCE 7,5%
DCE 4,6%
SSB 7,1%

DSB 5,2%
GL -1,0

HEALTH SUMMARY • NEW TRAITS • 04/2019

Milk Fever (hypocalcemia) -0,2%
Displaced Abomasum +0,6%
Retained Placenta +0,0%
Ketosis +0,5%
Mastitis +0,3%
Metritis +1,3%

Stature +1,72
Strength +1,18
Body Depth +0,80
Dairy Form +1,08
Rump Angle +0,69
Thurl Width +1,46
Rear Legs-Side View +0,45
Rear Legs-Rear View -0,11
Foot Angle +0,45
Feet & Legs Score +0,81
Fore Udder Attachment +2,63
Rear Udder Height +2,72
Rear Udder Width +2,50
Udder Clef +1,01
Udder Depth +1,90
Front Teat Placement +0,65
Rear Teat Placement +0,34
Teat Length -0,25

\$26.00 | \$60.00

JS LEXELL

PEAK LEXELL-ET • 734HO00088



Superhero X Monterey X Mogul
DOB: 29-JAN-2017
REG:HO84000313849878

aAa 243
DMS 234,123
KCN BE
BCN A1A2

0 DTRS / 0 HERDS



GTPI +2702

GENOMIC SUMMARY

Milk +1405 76%R
Fat +65 +0,04%
Protein +56 +0,05%
SCS +2,71 DPR +1,5
PL +6,1 HCR +3,4
CL +0,6 CCR +3,5

Net Merit \$ +775
Ch. Merit \$ +804
F Effic. +157
Fert. Index +2,2
EFI 8,6%

HA TYPE SUMMARY • CALVING SUMMARY

PTAT +2,65 76%R
UDC +2,98
FLC +1,03

SCE 7,4%
DCE 3,2%
SSB 7,9%

DSB 3,8%
GL +0,0

HEALTH SUMMARY • NEW TRAITS • 04/2019

Milk Fever (hypocalcemia) -0,3%
Displaced Abomasum +0,2%
Retained Placenta +0,1%
Ketosis +0,4%
Mastitis +0,6%
Metritis +1,4%

Stature +2,00
Strength +0,91
Body Depth +0,99
Dairy Form +1,70
Rump Angle -0,90
Thurl Width +1,99
Rear Legs-Side View +0,85
Rear Legs-Rear View +1,00
Foot Angle +1,01
Feet & Legs Score +1,46
Fore Udder Attachment +3,10
Rear Udder Height +4,09
Rear Udder Width +3,76
Udder Clef +2,41
Udder Depth +2,80
Front Teat Placement +1,26
Rear Teat Placement +1,44
Teat Length -0,07

\$28.00

JS ANSWER PO

ENDCO THE ANSWER-ET PO • 534HO00056



Montross X Earnhardt P X Robust
DOB: 18-JAN-2015
REG# USA74599862

aAa 345
DMS 234,345
KCN AB
BCN A1A2

70 DTRS / 9 HERDS

GTPI +2465

GENOMIC SUMMARY

Milk +1856 92%R
Fat +73 +0,01%
Protein +62 +0,02%
SCS +3,14 DPR +0,5
PL +3,7 HCR +1,5
CL -0,5 CCR +2,2

Net Merit \$ +673
Ch. Merit \$ +680
F Effic. +181
Fert. Index +1,0
EFI 8,1%

HA TYPE SUMMARY • CALVING SUMMARY

PTAT +1,57 79%R
UDC +1,53
FLC +0,63

SCE 6,9%
DCE 4,5%
SSB 6,5%

DSB 4,7%
GL -2,0

HEALTH SUMMARY • NEW TRAITS • 04/2019

Milk Fever (hypocalcemia) -0,1%
Displaced Abomasum +0,1%
Retained Placenta +0,1%
Ketosis +0,3%
Mastitis -2,6%
Metritis +0,9%

Stature +0,93
Strength +0,60
Body Depth +0,47
Dairy Form +1,88
Rump Angle +1,36
Thurl Width +0,78
Rear Legs-Side View -0,61
Rear Legs-Rear View +0,47
Foot Angle +0,70
Feet & Legs Score +0,84
Fore Udder Attachment +1,30
Rear Udder Height +2,96
Rear Udder Width +2,72
Udder Clef +0,94
Udder Depth +0,42
Front Teat Placement +0,83
Rear Teat Placement +1,03
Teat Length -1,84

\$18.00

JS HOTSPOT

SIEMERS HOTSPOT-ET • 734HO00090



Hotline x Monterey x Mogul
DOB: 22-MAY-2017
REG: HO840003141495385

aAa 324
DMS 456,246
KCN AA
BCN A2A2

0 DTRS / 0 HERDS



GTPI +2571

GENOMIC SUMMARY

Milk +998 77%R
Fat +52 +0,05%
Protein +43 +0,04%
SCS +2,85 DPR +0,0
PL +3,7 HCR +2,1
CL +1,3 CCR +0,8

Net Merit \$ +615
Ch. Merit \$ +639
F Effic. +120
Fert. Index +0,5
EFI 8,4%

HA TYPE SUMMARY • CALVING SUMMARY

PTAT +3,92 76%R
UDC +3,32
FLC +2,38

SCE 8,3%
DCE 3,3%
SSB 7,9%

DSB 4,7%
GL -1,0

HEALTH SUMMARY • NEW TRAITS • 04/2019

Milk Fever (hypocalcemia) -0,2%
Displaced Abomasum +0,5%
Retained Placenta +0,1%
Ketosis +0,4%
Mastitis +1,5%
Metritis +1,1%

Stature +3,73
Strength +1,32
Body Depth +1,97
Dairy Form +3,04
Rump Angle -1,23
Thurl Width +2,56
Rear Legs-Side View +0,12
Rear Legs-Rear View +2,75
Foot Angle +3,07
Feet & Legs Score +2,94
Fore Udder Attachment +4,28
Rear Udder Height +4,55
Rear Udder Width +4,19
Udder Clef +3,18
Udder Depth +3,90
Front Teat Placement +2,77
Rear Teat Placement +2,95
Teat Length -1,35

\$20.00

JSIMMENSE

OUR-FAVORITE IMMENSE-ET • 734HO00087



Jacoby X Beerner X Atwood
DOB: 08-APRIL-2017
REG# HO840003125220776

aAa 234
DMS 123,126
KCN AA
BCN A2A2

0 DTRS / 0 HERDS



GTPI +2005

GENOMIC SUMMARY

Milk	+80	79%R	Net Merit \$	+123
Fat	+21	+0.07%	Ch. Merit \$	+118
Protein	-3	-0.02%	F Effic.	-18
SCS	+2.81	DPR -2.1	Fert. Index	-1.7
PL	+0.8	HCR +0.2	EFI	9.8%
CL	-2.7	CCR -2.3		

HA TYPE SUMMARY • CALVING SUMMARY

PTAT	+4.18	78%R	SCE	8.7%	DSB	6.2%
UDC	+2.92		DCE	6.6%	GL	+0.0
FLC	+2.76		SSB	7.7%		

HEALTH SUMMARY • NEW TRAITS • 04/2019

Milk Fever (hypocalcemia)	-0.2%
Displaced Abomasum	-0.2%
Retained Placenta	+0.2%
Ketosis	N/A
Mastitis	+2.3%
Metritis	N/A

Stature	+4.54
Strength	+3.13
Body Depth	+3.09
Dairy Form	+2.24
Rump Angle	-0.10
Thurl Width	+3.26
Rear Legs-Side View	-1.19
Rear Legs-Rear View	+3.73
Foot Angle	+3.88
Feet & Legs Score	+3.27
Fore Udder Attachment	+4.77
Rear Udder Height	+3.93
Rear Udder Width	+3.62
Udder Cleff	+2.51
Udder Depth	+4.02
Front Teat Placement	+2.69
Rear Teat Placement	+2.57
Teat Length	-0.94

\$45.00

JSPJ PP RED

SIMPLE DREAMS PJ PP-ET RED • 734HO00100



Lucky PP-RED X Montross X Effect P-RED
DOB: 17-OCT-2017
REG: HO840M003145456268

aAa 423
DMS 345
KCN AB
BCN A2A2

0 DTRS / 0 HERDS



GTPI +2401

GENOMIC SUMMARY

Milk	+971	77%R	Net Merit \$	+576
Fat	+29	-0.03%	Ch. Merit \$	+594
Protein	+37	+0.03%	F Effic.	+89
SCS	+2.76	DPR +2.5	Fert. Index	+2.6
PL	+6.6	HCR +1.3	EFI	7.7%
CL	+1.8	CCR +4.2		

HA TYPE SUMMARY • CALVING SUMMARY

PTAT	+1.50	75%R	SCE	6.7%	DSB	4.7%
UDC	+2.15		DCE	4.1%	GL	-1.0
FLC	+1.42		SSB	6.6%		

HEALTH SUMMARY • NEW TRAITS • 04/2019

Milk Fever (hypocalcemia)	-0.2%
Displaced Abomasum	+0.3%
Retained Placenta	-0.2%
Ketosis	+0.2%
Mastitis	+0.2%
Metritis	+0.2%

Stature	+0.81
Strength	+0.25
Body Depth	+0.07
Dairy Form	+0.53
Rump Angle	+0.21
Thurl Width	+0.49
Rear Legs-Side View	-1.25
Rear Legs-Rear View	+1.34
Foot Angle	+1.58
Feet & Legs Score	+1.46
Fore Udder Attachment	+2.39
Rear Udder Height	+3.18
Rear Udder Width	+2.93
Udder Cleff	+0.05
Udder Depth	+2.15
Front Teat Placement	-0.27
Rear Teat Placement	-0.58
Teat Length	+0.64

\$28.00

JSDEMAN

EDG DEMAN-ET • 534HO00026



Mogul X Atwood X Shottle
DOB: 16-OCT-2012
REG# USA71494672

aAa 345261
DMS 234,123
KCN AA
BCN A1A2

1347 DTRS / 573 HERDS



GTPI +2415

GENOMIC SUMMARY

Milk	+257	98%R	Net Merit \$	+497
Fat	+70	+0.22%	Ch. Merit \$	+542
Protein	+35	+0.10%	F Effic.	+140
SCS	+2.93	DPR -0.8	Fert. Index	-0.6
PL	+1.8	HCR +1.2	EFI	8.1%
CL	-4.6	CCR -1.8		

HA TYPE SUMMARY • CALVING SUMMARY

PTAT	+3.24	96%R	SCE	8.6%	DSB	6.2%
UDC	+2.85		DCE	5.3%	GL	+0.0
FLC	+2.95		SSB	8.0%		

HEALTH SUMMARY • NEW TRAITS • 04/2019

Milk Fever (hypocalcemia)	-0.2%
Displaced Abomasum	+0.2%
Retained Placenta	+0.0%
Ketosis	+0.4%
Mastitis	+0.6%
Metritis	+0.4%

Stature	+2.38
Strength	+1.45
Body Depth	+1.73
Dairy Form	+2.32
Rump Angle	-2.05
Thurl Width	+2.21
Rear Legs-Side View	-0.71
Rear Legs-Rear View	+4.08
Foot Angle	+2.81
Feet & Legs Score	+2.93
Fore Udder Attachment	+3.49
Rear Udder Height	+3.91
Rear Udder Width	+3.60
Udder Cleff	+2.34
Udder Depth	+2.82
Front Teat Placement	+1.80
Rear Teat Placement	+1.88
Teat Length	+0.90

\$24.00

JSBREWER RC

BLEXYS BREWER RC-ET • 734HO00092



Diamondback X Goldwyn EX 96 2E
X Dundee EX90
DOB: 1-APRIL-2017
REG: HO840003133191475

aAa 432
DMS 234,345
KCN AA
BCN A1A2

0 DTRS / 0 HERDS



GTPI +1910

GENOMIC SUMMARY

Milk	-239	80%R	Net Merit \$	+75
Fat	+7	+0.06%	Ch. Merit \$	+83
Protein	-4	+0.01%	F Effic.	-8
SCS	+2.86	DPR -0.6	Fert. Index	-0.9
PL	+0.2	HCR -1.7	EFI	6.6%
CL	-2.1	CCR -1.2		

HA TYPE SUMMARY • CALVING SUMMARY

PTAT	+3.10	79%R	SCE	9.4%	DSB	5.9%
UDC	+2.69		DCE	6.4%	GL	+1.0
FLC	+1.89		SSB	8.9%		

HEALTH SUMMARY • NEW TRAITS • 04/2019

Milk Fever (hypocalcemia)	N/A
Displaced Abomasum	-1.0%
Retained Placenta	-0.2%
Ketosis	-0.3%
Mastitis	+0.7%
Metritis	-0.9%

Stature	+2.52
Strength	+1.36
Body Depth	+1.96
Dairy Form	+2.33
Rump Angle	-0.42
Thurl Width	+2.61
Rear Legs-Side View	+0.19
Rear Legs-Rear View	+2.33
Foot Angle	+2.05
Feet & Legs Score	+2.21
Fore Udder Attachment	+3.00
Rear Udder Height	+4.20
Rear Udder Width	+3.86
Udder Cleff	+2.74
Udder Depth	+2.20
Front Teat Placement	+1.52
Rear Teat Placement	+2.06
Teat Length	+1.50

\$32.00

U.S. Breeding Values / CDCB/HA Genomic Evaluation April 2019

HOLSTEIN															
Name	Bull ID	A2 Status	Pedigree	Net Merit \$	TPI	Type	UDC	FLC	Rel %	SCE	Rel %	PL	DPR	Fert Index	SCR
ANSWER P	JSANSWER	A12	Montross x Earnhardt P	673	2465	1.57	1.53	0.63	79	6.9	94	3.7	0.5	1.0	0.2
APPLE-CRISP RC	7H013778	A12	High Octane x Mogul	299	2142	3.04	2.68	1.41	80	7.4	95	1.0	-1.3	-0.9	2.2
BARCUDA PP RED	7H12982	A22	JAX P*RC x Numero Uno	526	2256	1.06	1.20	0.41	77	7.7	95	5.1	0.2	0.4	1.4
BRADNICK	7H10999	A22	Sanchez x Shottle	153	1910	2.47	2.68	2.47	99	7.9	99	3.0	-2.1	-1.7	0.7
BREWER RC	JSBREWER	A12	Diamondback x Goldwyn	75	1910	3.10	2.69	1.89	79	9.4	62	0.2	-0.6	-0.9	
CLASH P	CLASHP	A22	Powerball P x Bookem	621	2447	1.82	1.53	0.66	77	5.5	63	4.1	1.0	1.7	
COLD P	JSCOLD	A22	Powerball P x Beluga	568	2506	2.60	2.33	1.28	79	7.4	88	2.6	2.0	2.5	0.3
CYCLONE	7H012858	A12	Yoder x Numero Uno	816	2648	1.43	1.74	0.97	80	7.6	94	5.8	3.5	4.1	0.5
DEMAN	JSEMAN	A12	Mogul x Atwood	497	2415	3.24	2.85	2.95	96	8.6	97	1.8	-0.8	-0.6	1.0
DEMPSEY	7H9264	A12	Goldwyn x Derry	108	1917	2.34	1.77	1.57	99	8.7	99	-0.9	-1.3	-1.6	
DEWARS	14H07748	A22	Alta1stclass x Doorman	560	2391	2.32	2.71	1.13	80	6.4	96	5.1	1.1	1.2	
EUDON	EUDON	A12	Million x Shottle	180	1847	1.64	1.75	0.15	92	7.5	88	0.3	-1.5	-2.4	
EXETER	JSEXETER	A22	Bourbon x Altaspring	753	2630	2.17	1.76	0.81	76	7.7	63	4.8	2.2	2.6	1.3
FABIO	7H012987	A12	Franchise x Supersire	687	2523	1.97	2.18	0.96	80	5.4	98	6.2	1.8	2.1	0.9
FEDORA	14H013980	A12	Bandares x Kingboy	738	2629	1.92	2.08	0.81	78	10.0	92	6.3	1.9	2.7	0.6
GLAMOR	JSGLAMOR	A12	Cashcoin x Supersire	662	2389	1.51	0.71	-0.09	86	6.6	92	4.8	0.8	0.8	4.4
GOLD CHIP	7H10920	A12	Goldwyn x Shottle	88	1820	2.31	2.22	1.80	99	5.1	99	1.6	-1.1	-0.8	0.7
GUTHRIE	7H9420	A12	Goldwyn x Blitz	181	1977	2.51	2.24	1.34	99	6.2	99	0.8	-0.6	-0.4	
HAIL	7H012951	A22	Modesty x Mogul	767	2620	1.94	2.87	1.58	80	6.3	98	5.9	2.5	3.1	
HOTSPOT	JSHOTSPOT	A22	Hotline x Monterey	615	2571	3.92	3.32	2.38	76	8.3	63	3.7	0.0	0.5	1.8
HOUSE	7H012978	A22	Hang-Time x Jacey	735	2674	2.69	2.53	1.14	78	7.5	98	6.0	3.2	3.5	1.2
IMMENSE	JSIMMENSE	A22	Jacoby x Beemer	123	2005	4.18	2.92	2.76	78	8.7	63	0.8	-2.1	-1.7	
INNUENDO	ITINNUENDO	A12	Altatooth x Superman	760	2582	2.18	1.82	0.34	74	6.6	62	2.4	-1.2	-0.6	
LETSGO	ITLETSO	A12	Applicable x Powerball P	692	2640	3.28	3.15	1.57	75	7.7	61	3.9	0.2	0.5	
LEXELL	JSLEXELL	A12	Superhero x Monterey	775	2702	2.65	2.98	1.03	75	7.4	63	6.1	1.5	2.2	
LIBERTY P	7H014132	A22	Moritz X Eraser P	733	2621	2.16	2.62	1.24	76	6.1	63	5.6	2.1	2.6	2.3
MARDI GRAS	JSMARDIGRAS	A12	Mogul x Planet	609	2477	1.67	2.87	1.10	97	6.6	97	3.2	2.0	2.7	1.7
MASTERMIND	JSMMASTERMIND	A12	Montana x Supersire	792	2607	1.56	1.87	0.58	78	7.9	91	5.6	0.5	1.1	1.5
MOGUL	7H11314	A12	Dorcy x Marsh	587	2387	2.16	3.11	2.03	99	6.0	99	2.5	-1.7	-1.1	
NINJA	JSNINJA	A22	Hotline x Altaspring	752	2680	3.02	3.10	1.90	76	6.2	63	3.8	-0.3	0.3	
OUTLAST PP	OUTLAST PP	A12	Powerball P x Predestine	473	2284	1.08	1.19	0.71	79	6.0	78	2.6	2.6	2.5	
PJ PP RED	JSPJ	A22	Lucky PP-RED x Montross	576	2401	1.50	2.15	1.42	75	6.7	62	6.6	2.5	2.6	
SALVATORE RC	JSSALVATORE	A11	Supershot x Sympatico *RC	763	2586	1.86	1.65	1.73	79	5.2	98	6.2	0.7	0.7	1.7
SAMURI	7H12897	A22	Altaspring x Supersire	838	2702	2.02	2.10	0.85	81	7.1	99	5.7	1.9	2.5	3.4
SECRETARIAT	SECRETARIAT	A22	Numero Uno x AltaBaxter	379	2243	2.51	3.06	1.60	88	6.8	72	3.3	1.2	1.3	
SIR-ROZ	14H013976	A12	Bandares x Lottomax	820	2640	1.68	2.24	0.69	78	8.5	91	7.2	2.2	2.7	
SNEAKER	ITSNEAKER	A22	Meridian x Atwood	163	2031	3.48	3.25	1.85	87	7.8	65	0.0	-1.7	-0.7	
SUPERHERO	JSSUPERHERO	A12	Supershot x Numero Uno	756	2628	2.00	1.91	0.33	79	7.5	97	6.8	3.1	3.2	0.7
SUPERJET	SUPERJET	A12	Superhero x Balisto	804	2653	2.19	1.96	0.47	75	6.2	62	6.3	0.9	1.4	
WOODFORD	JSWOODFORD	A22	Bourbon x Rubicon	825	2703	2.55	2.34	1.50	76	7.2	64	5.6	0.5	1.1	
YOLO	JSYOLO	A22	Bandares x Meridian	850	2742	2.65	3.23	0.78	79	7.6	64	6.3	1.7	2.5	1.8

JERSEY															
Name	Bull ID	A2 Status	Pedigree	Net Merit \$	JPI	Type	UDC	FLC	Rel %	Early First Calving	Rel %	PL	DPR	Fert Index	SCR
AXIS	7JE01274	A22	Valentino x Restore	389	116	2.00	12.13	10.30	99	0.7	94	3.5	-5.8	-4.4	1.5
CASPIAN	CASPIAN	A12	Axis x Legion	417	121	1.90	21.60	-	77	1.5	59	5.3	-1.0	-0.8	
GRANT {6}	14JE00754	A22	Volcano x Galvanize	496	151	2.00	22.19	1.40	77	1.5	58	4.8	-0.7	-0.2	1.7
IRWIN	7J1163	A22	Valentino x latola	202	63	1.80	24.37	-3.10	99	0.4	96	3.8	-3.5	-2.5	
OLIVER P	7J1219	A22	Valentino x Mik P	352	94	2.30	22.65	9.40	98	2.7	88	2.7	-2.1	-1.7	0.6
SOLAR PP	7JE01499	A12	Nikon P x Dimension	393	123	1.30	13.63	0.60	80	3.2	58	1.9	-2.8	-1.9	0.4
SUIT {6}	7J1707	A12	Disco x Harris	567	174	1.60	20.39	6.00	75	0.7	51	4.1	-2.0	-1.0	
VALENTINO	7J1038	A22	Louie x Paramount	274	75	1.80	17.57	6.70	99	1.5	99	4.1	-2.8	-2.3	

Australian Breeding Values / ABV(g) April 2019

HOLSTEIN																										
Name	BPI	BPI Rel%	HWI	TWI	ASI	Protein (Kg)	Protein %	Milk (L)	Fat (Kg)	Fat %	Rel %	Milk Speed	Temp	Likeability	Rel %	Overall Type	Mamm System	Rel %	Cell Count	Rel %	Daughter Fertility	Rel%	Calving Ease	Rel %	RRP \$	Sexed \$
ANSWER P	173	67	180	170	35	11	-0.14	687	14	-0.22	77	102	102	104	68	100	106	63	136	69	107	57	102	63	\$18.00	
APPLE-CRISP RC	134	69	118	194	-3	7	-0.17	572	4	-0.29	78	102	104	106	70	108	111	65	158	69	104	59	102	65	\$24.00	\$65.00
BARCUDIA PP RED	207	67	186	193	79	19	0.03	633	8	-0.28	77	101	101	104	64	103	103	62	155	68	106	55	102	56	\$20.00	\$55.00
BRADNICK	98	91	134	188	-20	16	-0.19	969	-18	-0.86	99	101	107	109	93	109	114	96	128	96	97	93	100	96	\$22.00	\$52.00
BREWER RC	99	68	118	149	-35	-5	-0.05	-87	-6	-0.04	77	102	101	102	69	107	110	64	143	69	105	59	97	42	\$32.00	
CLASH P	267	68	231	234	136	22	0.27	277	8	-0.05	78	102	100	103	69	99	100	64	146	69	109	56	100	45	\$20.00	
COLD P	328	68	287	324	130	23	0.20	477	9	-0.16	78	102	101	104	68	106	106	64	147	69	114	57	102	64	\$24.00	
CYCLONE	333	68	285	309	159	14	0.16	212	45	0.53	77	103	104	105	68	100	106	64	154	69	109	60	101	57	\$28.00	\$55.00
DEMAN	307	77	248	367	180	20	0.26	231	37	0.40	82	104	104	107	84	111	110	81	141	87	101	82	99	71	\$24.00	
DEMPSEY	157	91	149	195	35	1	0.14	-219	2	0.16	99	101	101	104	93	106	107	97	159	97	101	94	100	97	\$30.00	
DEWARS	304	69	283	324	94	9	0.10	126	25	0.29	79	102	102	104	70	106	111	65	176	70	107	61	103	70	\$24.00	\$60.00
EUUDON	87	73	75	136	-3	-2	-0.06	55	8	0.08	75	103	104	103	85	107	106	79	127	84	102	83	102	74	\$24.00	
EXETER	235	65	179	266	125	16	0.00	598	41	0.23	77	101	100	104	61	106	108	57	155	68	104	48	102	37	\$36.00	
FABIO	264	68	255	260	88	21	-0.04	853	17	-0.29	78	99	103	104	67	103	108	64	156	70	110	59	105	59	\$22.00	
FEDORA	311	66	265	322	143	21	0.16	472	25	0.07	77	101	101	104	63	105	107	61	176	68	107	52	98	55	\$25.00	\$60.00
GLAMOR	269	72	210	275	148	25	0.12	670	25	-0.05	80	102	103	105	72	106	108	74	136	81	106	61	103	58	\$22.00	
GOLD CHIP	25	91	76	89	-106	-11	-0.35	264	0	-0.16	99	102	105	107	94	106	107	95	156	96	99	93	103	97	\$42.00	\$75.00
GUTHRIE	194	93	182	241	77	13	0.07	343	12	-0.04	99	101	102	105	98	107	110	98	141	99	101	96	102	99	\$20.00	
HAIL	295	68	252	301	151	20	0.16	438	31	0.17	78	102	102	106	68	104	107	64	136	70	108	58	103	62	\$28.00	
HOTSPOT	225	66	188	271	119	23	0.06	748	18	-0.21	77	101	103	105	65	108	112	61	141	67	101	53	102	36	\$20.00	
HOUSE	276	68	237	271	126	13	0.17	159	28	0.30	78	101	101	104	66	101	106	63	165	69	107	57	102	63	\$30.00	
IMMENSE	126	67	143	212	-31	0	-0.19	373	4	-0.17	77	103	103	106	67	111	115	63	163	69	101	53	101	37	\$45.00	
INNUENDO	313	66	246	321	177	27	0.15	697	35	0.08	77	102	101	105	64	107	107	60	154	67	106	52	102	30	\$22.00	
LETSGO	364	66	304	364	176	27	0.23	549	24	0.01	77	102	102	105	65	106	108	61	154	66	111	52	101	35	\$36.00	
LEXELL	260	67	216	255	138	27	0.06	878	23	-0.21	77	100	103	105	67	102	108	61	159	67	104	56	102	36	\$28.00	
LIBERTY P	285	66	231	288	150	27	0.06	873	29	-0.12	77	102	102	105	65	105	109	60	161	67	105	53	102	34	\$26.00	\$55.00
MARDI GRAS	257	83	228	279	96	11	0.12	192	20	0.18	89	103	103	106	86	103	107	87	137	89	109	86	102	74	\$24.00	
MASTERMIND	338	68	273	340	188	28	0.12	815	41	0.10	77	102	103	106	69	105	107	63	160	68	106	57	101	55	\$26.00	
MOGUL	233	91	197	290	118	17	-0.01	635	37	0.15	99	105	104	108	95	109	111	94	123	96	102	93	103	92	\$42.00	\$68.00
NINJA	Not Tested																								\$26.00	
OUTLAST PP	240	68	214	224	98	16	0.15	304	9	-0.05	77	100	100	103	70	103	103	64	153	68	109	58	103	65	\$18.00	
PJ PP RED	Not Tested																								\$28.00	
SALVATORE RC	203	68	178	207	88	22	-0.10	1026	20	-0.35	78	99	103	104	69	105	103	64	168	68	103	61	104	70	\$24.00	
SAMURI	285	68	221	296	153	20	0.18	406	30	0.18	77	101	102	105	70	106	107	63	153	68	107	61	102	61	\$30.00	\$65.00
SECRETARIAT	259	60	240	297	69	12	0.02	392	15	-0.02	59	104	104	104	75	109	111	65	155	77	107	73	102	68	\$36.00	\$75.00
SIR-ROZ	334	66	298	352	146	16	0.20	185	32	0.34	77	103	102	105	63	106	110	61	174	68	106	52	99	54	\$25.00	
SNEAKER	17	56	41	91	-54	6	-0.29	780	-9	-0.61	56	104	101	104	65	109	112	61	109	73	99	60	100	60	\$28.00	
SUPERHERO	329	69	281	322	135	26	0.08	799	20	-0.20	78	101	104	106	70	105	104	65	174	69	111	62	101	69	\$26.00	\$60.00
SUPERJET	357	67	289	336	175	22	0.24	366	31	0.23	77	102	103	105	67	106	105	61	175	67	110	56	102	34	\$24.00	
WOODFORD	Not Tested																								\$60.00	
YOLO	286	67	239	307	132	18	0.06	556	34	0.15	78	103	103	105	64	106	111	62	161	69	105	54	102	37	\$50.00	

JERSEY

Name	BPI	BPI Rel%	HWI	TWI	ASI	Protein (Kg)	Protein %	Milk (L)	Fat (Kg)	Fat %	Rel %	Milk Speed	Temp	Likeability	Rel %	Overall Type	Mamm System	Rel %	Cell Count	Rel %	Daughter Fertility	Rel %	RRP \$	Sexed \$
AXIS	113	74	75	173	73	21	-0.19	870	9	-0.72	81	101	104	105	66	109	106	74	149	83	92	78	\$20.00	
CASPIAN	80	63	62	128	15	4	-0.03	154	2	-0.12	74	100	102	105	55	107	107	52	135	68	100	51	\$16.00	
GRANT {6}	154	63	119	195	89	10	0.16	76	16	0.23	74	101	104	105	59	106	104	52	136	66	97	50	\$22.00	\$50.00
IRWIN	177	89	157	252	64	10	0.00	302	13	-0.06	98	103	105	106	94	111	111	92	152	94	96	89	\$26.00	
OLIVER P	169	70	141	232	77	11	-0.06	398	24	0.05	75	101	105	106	66	111	110	75	120	81	99	78	\$24.00	\$50.00
SOLAR PP	99	60	74	98	80	6	0.21	-112	17	0.43	71	100	101	102	54	100	98	49	130	65	97	47	\$24.00	
SUIT {6}	129	50	96	118	84	4	0.22	-173	21	0.57	62	102	101	102	40	98	97	33	159	53	97	30	\$22.00	
VALENTINO	175	92	147	252	67	15	-0.14	617	15	-0.34	99	103	107	108	98	113	114	98	138	98	96	95	\$24.00	

*Prices are exclusive of GST and are effective from the 10th April 2019 and are subject to change without notice.

Jx Kash-In Disco Suit {6}-ET
7JE1707

SUIT {6}

Disco x Harris

A12



Suit MGD Kash-In Dimension 39428-P-ET

PTA Milk	586
PTA Fat	76
% Fat	0.24
PTA Pro	46
% Pro	0.12
PTA DPR	-2
PL	4.1
SCR	-0.5
SCS	2.81

0 dtrs 0 herds 73% rel

BPI 129/50%

Type 98/33%

Mammary 97/33%

Dtr Fertility 97/30%

Sire: Oaklane Dazzler Disco 2127
Dam: Kash-In Harris 46888 {5} P-ET

RRP \$22.00

Physical Trait Evaluation					0 dtrs 0 herds 75% rel
PTA Type	JUI	FLC	TPI	Net Merit \$	
1.60	20.39	6.00	174	567	
Stature	Short			2.20	Tall
Strength	Narrow			1.10	Wide
Dairyness	Thick			1.40	Angular
Rump (side View)	High Pins			-0.60	Sloped
Rump Width	Narrow			1.20	Wide
Rear Leg (Side View)	Posty			-0.20	Sickled
Foot Angle	Low Angle			1.10	Steep Angle
Fore Udder	Loose			2.50	Strong
Rear Udder Height	Low			1.20	High
Rear Udder Width	Narrow			1.10	Wide
Suspensory Ligament	Weak			0.30	Strong
Udder Depth	Deep			2.10	Shallow
Teats (Front View)	Wide			0.30	Close
Teats (Rear View)	Wide			0.40	Close
Teat Length	Short			0.60	Long

Jx Crescent Volcano Grant {6}
14JE754

GRANT {6}

Volcano x Galvanize

A22



PTA Milk	846
PTA Fat	58
% Fat	0.09
PTA Pro	38
% Pro	0.04
PTA DPR	-0.7
PL	4.8
SCR	1.7
SCS	2.97

0 dtrs 0 herds 76% rel

BPI 154/63%

Type 106/52%

Mammary 104/52%

Dtr Fertility 97/50%

Sire: All Lynns Legal Volcano-ET
Dam: Oomsdale Gavriel Galvan Grady {5} VG86

RRP \$22.00
SEXED \$50.00

Physical Trait Evaluation					0 dtrs 0 herds 77% rel
PTA Type	JUI	FLC	TPI	Net Merit \$	
2.00	22.19	1.40	151	496	
Stature	Short			1.70	Tall
Strength	Narrow			0.40	Wide
Dairyness	Thick			1.70	Angular
Rump (side View)	High Pins			0.90	Sloped
Rump Width	Narrow			0.60	Wide
Rear Leg (Side View)	Posty			0.30	Sickled
Foot Angle	Low Angle			0.10	Steep Angle
Fore Udder	Loose			1.90	Strong
Rear Udder Height	Low			1.50	High
Rear Udder Width	Narrow			1.30	Wide
Suspensory Ligament	Weak			0.30	Strong
Udder Depth	Deep			1.90	Shallow
Teats (Front View)	Wide			1.90	Close
Teats (Rear View)	Wide			0.90	Close
Teat Length	Short			-0.40	Long

Sugar Grove Valentino Axis
7JE1274

AXIS

Valentino x Restore

A22



Axis Daughter, Crosswind Axis 5795 {6}-ET

PTA Milk	1801
PTA Fat	35
% Fat	-0.23
PTA Pro	56
% Pro	-0.04
PTA DPR	-5.8
PL	3.5
SCR	1.5
SCS	2.85

1977 dtrs 269 herds 99% rel

BPI 113/74%

Type 109/74%

Mammary 106/74%

Dtr Fertility 92/78%

Sire: All Lynns Louie Valentino-ET
Dam: Sugar Grove Restore Addie ET VG87

RRP \$20.00

Physical Trait Evaluation					906 dtrs 171 herds 99% rel
PTA Type	JUI	FLC	TPI	Net Merit \$	
2.00	12.13	10.30	116	389	
Stature	Short			2.40	Tall
Strength	Narrow			0.50	Wide
Dairyness	Thick			1.90	Angular
Rump (side View)	High Pins			2.10	Sloped
Rump Width	Narrow			0.60	Wide
Rear Leg (Side View)	Posty			-0.70	Sickled
Foot Angle	Low Angle			0.60	Steep Angle
Fore Udder	Loose			0.90	Strong
Rear Udder Height	Low			1.90	High
Rear Udder Width	Narrow			1.40	Wide
Suspensory Ligament	Weak			0.00	Strong
Udder Depth	Deep			0.90	Shallow
Teats (Front View)	Wide			-0.70	Close
Teats (Rear View)	Wide			0.30	Close
Teat Length	Short			-0.80	Long

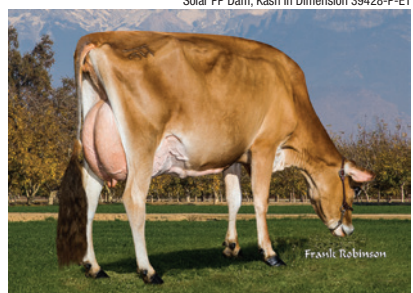
0 dtrs 0 herds

Kash-In Solar-PP-ET
7JE1499

SOLAR PP

Nikon P x Dimension

A12



Solar MGD, Jars-Of-Clay Venerable 1771 2620

PTA Milk	485
PTA Fat	61
% Fat	0.19
PTA Pro	39
% Pro	0.11
PTA DPR	-2.8
PL	1.9
SCR	0.4
SCS	3.01

14 dtrs 11 herds 83% rel

BPI 99/60%

Type 100 /49%

Mammary 98 /49%

Dtr Fertility 97/47%

Sire: Ahlem Nikon P
Dam: Kash In Dimension 39428-P-ET VG87

RRP \$24.00

Physical Trait Evaluation					5 dtrs 4 herds 80% rel
PTA Type	JUI	FLC	TPI	Net Merit \$	
1.30	13.63	0.60	123	393	
Stature	Short			1.90	Tall
Strength	Narrow			-0.10	Wide
Dairyness	Thick			1.30	Angular
Rump (side View)	High Pins			0.10	Sloped
Rump Width	Narrow			0.40	Wide
Rear Leg (Side View)	Posty			0.60	Sickled
Foot Angle	Low Angle			0.00	Steep Angle
Fore Udder	Loose			0.50	Strong
Rear Udder Height	Low			0.90	High
Rear Udder Width	Narrow			1.00	Wide
Suspensory Ligament	Weak			0.30	Strong
Udder Depth	Deep			1.80	Shallow
Teats (Front View)	Wide			0.40	Close
Teats (Rear View)	Wide			1.10	Close
Teat Length	Short			0.00	Long

0 dtrs 0 herds

All Lynns Louie Valentino-ET 7JE1038

VALENTINO

Louie x Paramount A22



Valentino Daughter, Cairnbrae Valentino Althea

PTA Milk	746	BPI	175/92%
PTA Fat	19	Type	113/98%
% Fat	-0.08	Mammary	114/98%
PTA Pro	24	Dtr Fertility	96/95%
% Pro	-0.01		
PTA DPR	-2.8		
PL	4.1		
SCR	-2.4		
SCS	2.98		

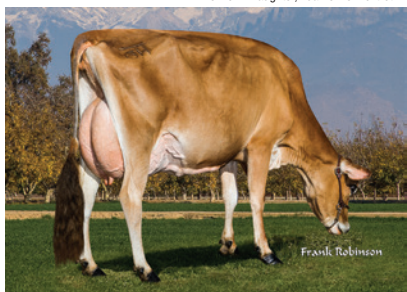
18108 dtrs 2001 herds 99% rel 1692 dtrs 169 herds

Sire:	BHF-SSF Parade Louie-ET				RRP \$24.00
Dam:	D&E Paramount Violet EX90				
Physical Trait Evaluation					7155 dtrs 923 herds 99% rel
PTA Type	JUI	FLC	TPI	Net Merit \$	
1.80	17.57	6.70	75	274	
175/92%	Stature	Short	<div></div>	1.90	Tail
	Strength	Narrow	<div></div>	0.50	Wide
	Dairyness	Thick	<div></div>	1.30	Angular
	Rump (side View)	High Pins	<div></div>	1.60	Sloped
	Rump Width	Narrow	<div></div>	0.60	Wide
113/98%	Rear Leg (Side View)	Posty	<div></div>	-0.50	Sickled
	Foot Angle	Low Angle	<div></div>	0.40	Sheep Angl
	Fore Udder	Loose	<div></div>	1.60	Strong
114/98%	Rear Udder Height	Low	<div></div>	1.50	High
	Rear Udder Width	Narrow	<div></div>	0.90	Wide
	Suspensory Ligament	Weak	<div></div>	-0.10	Strong
	Udder Depth	Deep	<div></div>	1.60	Shallow
	Teats (Front View)	Wide	<div></div>	1.00	Close
96/95%	Teats (Rear View)	Wide	<div></div>	1.40	Close
	Test Length	Short	<div></div>	-0.60	Long

Dutch Hollow Oliver-P 7JE1219

OLIVER P

Valentino x Mik P A22



Oliver P Daughter, Pine Prairie Oliver Fiesta (5)

PTA Milk	700	BPI	169/70%
PTA Fat	45	Type	111/75%
% Fat	0.06	Mammary	110/75%
PTA Pro	21	Dtr Fertility	99/78%
% Pro	-0.02		
PTA DPR	-2.1		
PL	2.7		
SCR	0.6		
SCS	3.01		

1081 dtrs 307 herds 99% rel 0 dtrs 0 herds

Sire:		All Lynns Louie Valentino-ET		RRP \$24.00		
Dam:		Dutch Hollow Mik Olive-P EX91		SEXED \$50.00		
Physical Trait Evaluation				436 dtrs 125 herds 98% rel		
PTA Type		JUI	FLC	TPI	Net Merit \$	
2.30		22.65	9.40	94	352	
169/70%	Stature	Short		<div></div>	1.10	Tall
	Strength	Narrow		<div></div>	0.50	Wide
	Dairyness	Thick		<div></div>	1.30	Angular
	Rump (side View)	High Pins		<div></div>	1.70	Sloped
	Rump Width	Narrow		<div></div>	0.30	Wide
111/75%	Rear Leg (Side View)	Posty		<div></div>	-0.10	Sickled
	Foot Angle	Low Angle		<div></div>	0.50	Sleep Ang
110/75%	Fore Udder	Loose		<div></div>	1.70	Strong
	Rear Udder Height	Low		<div></div>	2.80	High
	Rear Udder Width	Narrow		<div></div>	1.00	Wide
	Suspensory Ligament	Weak		<div></div>	0.40	Strong
	Udder Depth	Deep		<div></div>	1.60	Shallow
99/78%	Teats (Front View)	Wide		<div></div>	0.60	Close
	Teats (Rear View)	Wide		<div></div>	0.90	Close
	Test Length	Short		<div></div>	-0.60	Long

All Lynns Valentino Irwin-ET 7JE1163

IRWIN

Valentino x latola A22



Irwin Daughter, Bushlea Irwin Circus

PTA Milk	419	BPI	177 /89%
PTA Fat	19	Type	111 /92%
% Fat	0	Mammary	111 /92%
PTA Pro	15	Dtr Fertility	96/89%
% Pro	0		
PTA DPR	-3.5		
PL	3.8		
SCR	-1.8		
SCS	2.95		

3537 dtrs 666 herds 99% rel 340 dtrs 58 herds

Sire:

All Lynns Louie Valentino-ET

Dam:

Jars Of Clay latola 16710 VG87

RRP \$26.00

Physical Trait Evaluation

1897 dtrs 447 herds 99% rel

PTA Type	JUI	FLC	TPI	Net Merit \$
1.80	24.37	-3.10	63	202

177 /89%

Stature	Short			1.30	Tall
Strength	Narrow			-0.30	Wide
Dairyness	Thick			0.60	Angular
Rump (side View)	High Pins			0.90	Sloped
Rump Width	Narrow			-0.70	Wide
Rear Leg (Side View)	Posty			-0.10	Sickled
Foot Angle	Low Angle			-0.20	Sleep Ang
Fore Udder	Loose			2.10	Strong
Rear Udder Height	Low			2.10	High
Rear Udder Width	Narrow			0.40	Wide
Suspensory Ligament	Weak			-0.20	Strong
Udder Depth	Deep			2.70	Shallow
Teats (Front View)	Wide			0.50	Close
Teats (Rear View)	Wide			0.00	Close
Test Length	Short			-0.60	Long

111 /92%

111 /92%

96/89%

Isau Bushlea Rv Casual-ET CASPIAN

CASPIAN

Axis x Legion A12



Bushlea Rv Casual IMP-ET

PTA Milk	1102	BPI	80/63%
PTA Fat	34	Type	107/52%
% Fat	-0.09	Mammary	107/52%
PTA Pro	35	Dtr Fertility	100/51%
% Pro	-0.02		
PTA DPR	-1		
PL	5.3		
SCR			
SCS	2.79		

0 dtrs 0 herds 76% rel 0 dtrs 0 herds

Sire:

Sugar Grove Valentino Axis

Dam:

BW Legion Cleo ET EX91

RRP \$16.00

Physical Trait Evaluation

0 dtrs 0 herds 77% rel

PTA Type	JUI	FLC	TPI	Net Merit \$
1.90	21.60		121	417

80/63%

Stature	Short			3.50	Tall
Strength	Narrow			1.90	Wide
Dairyness	Thick			0.80	Angular
Rump (side View)	High Pins			1.40	Sloped
Rump Width	Narrow			1.70	Wide
Rear Leg (Side View)	Posty			-0.40	Sickled
Foot Angle	Low Angle			0.70	Steep Angled
Fore Udder	Loose			2.30	Strong
Rear Udder Height	Low			1.40	High
Rear Udder Width	Narrow			0.60	Wide
Suspensory Ligament	Weak			-0.30	Strong
Udder Depth	Deep			2.50	Shallow
Teats (Front View)	Wide			0.40	Close
Teats (Rear View)	Wide			0.70	Close
Test Length	Short			-0.50	Long

107/52%

107/52%

100/51%

Superbrown Hadrian

SUPHADRIAN

Huray x Poster A22



Hadrian Dam, Profanter Poster Ruusch



ITE	1110 /78%
Production	
kgP	46
P%	0.18
Milk	892
kgF	41
F%	0.04
Rel %	78

29 dtrs 28 herds

Sire:	Huray
Dam:	Ruusch (Poster)
Herd Book	IT021002008800
NASIS:	95SBK05
Breeder:	SuperBrown, Italy

RRP
\$18.00

81% rel

Health Traits	
Longevity	113
Milking Speed	122
Cell Count	109
K-Casein	126
Calving Interval	107

29 dtrs 27 herds

Type			
Overall Type	111	Hock Quality	136
Udder Composite	108	Pastern	111
Feet & Leg Composite	119	Foot Height	120
Stature	114	Fore Ud. Att.	101
Strength	98	Rear Udd. W.	101
Body Depth	101	Rear Udd. H.	118
Top Line	127	Udder Cleft	94
Rump Angle	122	Udder Depth	115
Thurl Width	130	T.placement	112
Rear Leg Set	107	T. Length	115

Superbrown Kiba Fener ET

SUPFENER

Falk X Agenda A11



Fener Dam, Kiba Delicata



ITE	801 /72%
Production	
kgP	14
P%	-0.02
Milk	450
kgF	20
F%	0.00
Rel %	72

0 dtrs 0 herds

Sire:	Falk
Dam:	Kiba Delicata ET
Herd Book	IT014990128042
NASIS:	95SBN04
Breeder:	Superbrown, Italy

RRP
\$22.00

68% rel

Health Traits	
Longevity	119
Milking Speed	114
Cell Count	115
K-Casein	126
Calving Interval	117

0 dtrs 0 herds

Type			
Overall Type	125	Hock Quality	118
Udder Composite	126	Pastern	121
Feet & Leg Composite	136	Foot Height	131
Stature	121	Fore Ud. Att.	132
Strength	122	Rear Udd. W.	144
Body Depth	114	Rear Udd. H.	132
Top Line	124	Udder Cleft	101
Rump Angle	112	Udder Depth	123
Thurl Width	120	T.placement	116
Rear Leg Set	88	T. Length	86

Superbrown Alexis

SUPALEXIS

Arrow x Payssli A12



Alexis MGD, Bochet Glenn Nora



ITE	873 /69%
Production	
kgP	21
P%	-0.01
Milk	623
kgF	16
F%	-0.13
Rel %	69

0 dtrs 0 herds

Sire:	Arrow
Dam:	Nikita
Herd Book	IT021002192110
NASIS:	—
Breeder:	SuperBrown, Italy

RRP
\$20.00

65% rel

Health Traits	
Longevity	119
Milking Speed	110
Cell Count	113
K-Casein	127
Calving Interval	119

0 dtrs 0 herds

Type			
Overall Type	126	Hock Quality	120
Udder Composite	126	Pastern	148
Feet & Leg Composite	145	Foot Height	148
Stature	117	Fore Ud. Att.	116
Strength	124	Rear Udd. W.	120
Body Depth	114	Rear Udd. H.	126
Top Line	115	Udder Cleft	112
Rump Angle	91	Udder Depth	136
Thurl Width	135	T.placement	129
Rear Leg Set	89	T. Length	92

Superbrown Duplago

SUPDUPLAGO

Falco x Dally A22



Duplago Dam, Furtschegger Dally Efeu



ITE	1159 /69%
Production	
kgP	45
P%	0.11
Milk	1006
kgF	41
F%	-0.01
Rel %	69

0 dtrs 0 herds



Duplago MGD, Furtschegger Vigor Elliot

Sire:	Falco
Dam:	Efeu
Herd Book	IT021002241600
NASIS:	—
Breeder:	SuperBrown, Italy

RRP \$32.00
SEXED \$85.00

64% rel

Health Traits	
Longevity	109
Milking Speed	112
Cell Count	121
K-Casein	129
Calving Interval	111

0 dtrs 0 herds

Type			
Overall Type	124	Hock Quality	132
Udder Composite	127	Pastern	131
Feet & Leg Composite	137	Foot Height	122
Stature	115	Fore Ud. Att.	116
Strength	112	Rear Udd. W.	126
Body Depth	103	Rear Udd. H.	135
Top Line	131	Udder Cleft	129
Rump Angle	101	Udder Depth	129
Thurl Width	123	T.placement	131
Rear Leg Set	104	T. Length	78

PLivello Bive Pays Bender ET

ITBENDER

Biver x Payssli

A22

Bender Dam, Livello Payssli Dalila



ITE	1184 /71%
Production	
kgP	39
P%	0.14
Milk	779
kgF	28
F%	-0.06
Rel %	71

0 dtrs 0 herds

Sire:	Scherma Blooming Biver ET
Dam:	P.Livello Payssli Dalila EX91
Herd Book	IT034990885777
NASIS:	95SBM05
Breeder:	Superbrown, Italy

RRP \$55.00
SEXED \$90.00

BROWN SWISS

66% rel

Health Traits	
Longevity	120
Milking Speed	107
Cell Count	122
K-Casein	136
Calving Interval	105

0 dtrs 0 herds

Type			
Overall Type	134	Hock Quality	97
Udder Composite	130	Pastern	139
Feet & Leg Composite	140	Foot Height	136
Stature	135	Fore Udd. Att.	119
Strength	145	Rear Udd. W.	113
Body Depth	137	Rear Udd. H.	125
Top Line	127	Udder Cleft	120
Rump Angle	129	Udder Depth	141
Thurl Width	129	T.placement	116
Rear Leg Set	91	T. Length	67

Superbrown Hotel

SUPHOTEL

Hardy x Payssli

A12

Hotel Dam, Frener Payssli Nelli



ITE	963 /71%
Production	
kgP	31
P%	0.08
Milk	698
kgF	37
F%	0.10
Rel %	71

0 dtrs 0 herds

Sire:	Superbrown Hardy
Dam:	F.M. Nelli
Herd Book	IT021002119600
NASIS:	95SBM06
Breeder:	SuperBrown, Italy

RRP \$20.00

67% rel

Health Traits	
Longevity	125
Milking Speed	118
Cell Count	113
K-Casein	128
Calving Interval	119

0 dtrs 0 herds

Type			
Overall Type	113	Hock Quality	110
Udder Composite	112	Pastern	101
Feet & Leg Composite	106	Foot Height	111
Stature	120	Fore Udd. Att.	110
Strength	117	Rear Udd. W.	110
Body Depth	114	Rear Udd. H.	118
Top Line	88	Udder Cleft	102
Rump Angle	114	Udder Depth	117
Thurl Width	105	T.placement	88
Rear Leg Set	97	T. Length	116

Superbrown Kiba Superstar

SUPSUPERSTAR

Blooming X Payssli

A12

Superstar Dam, Barri Payssli Noa ET



ITE	1036 /70%
Production	
kgP	39
P%	0.16
Milk	736
kgF	30
F%	-0.01
Rel %	70

0 dtrs 0 herds

Sire:	Scherma Glenn Blooming ET
Dam:	Kiba Noa ET
Herd Book	IT014990127961
NASIS:	95SBN03
Breeder:	SuperBrown, Italy

RRP \$24.00
SEXED \$85.00

66% rel

Health Traits	
Longevity	103
Milking Speed	106
Cell Count	108
K-Casein	130
Calving Interval	114

0 dtrs 0 herds

Type			
Overall Type	135	Hock Quality	105
Udder Composite	132	Pastern	121
Feet & Leg Composite	135	Foot Height	151
Stature	141	Fore Udd. Att.	122
Strength	157	Rear Udd. W.	124
Body Depth	140	Rear Udd. H.	127
Top Line	160	Udder Cleft	137
Rump Angle	107	Udder Depth	140
Thurl Width	127	T.placement	151
Rear Leg Set	110	T. Length	87

Superbrown Tevez

SUPTEVEZ

Temptation x Vivid

A22

Tevez Sire, Toro Vivid



ITE	1031 /70%
Production	
kgP	33
P%	0.10
Milk	709
kgF	28
F%	-0.03
Rel %	70

0 dtrs 0 herds

Sire:	Temptation
Dam:	Fanni
Herd Book	IT021002263900
NASIS:	-
Breeder:	SuperBrown, Italy

RRP \$20.00

65% rel

Health Traits	
Longevity	114
Milking Speed	109
Cell Count	111
K-Casein	127
Calving Interval	124

0 dtrs 0 herds

Type			
Overall Type	125	Hock Quality	127
Udder Composite	123	Pastern	126
Feet & Leg Composite	138	Foot Height	124
Stature	134	Fore Udd. Att.	105
Strength	120	Rear Udd. W.	111
Body Depth	115	Rear Udd. H.	125
Top Line	105	Udder Cleft	125
Rump Angle	114	Udder Depth	140
Thurl Width	120	T.placement	134
Rear Leg Set	89	T. Length	79

Palmyra Reagan Bostic

7AY00123

BOSTIC

Reagan x Aclaim

A12

Bostic MGD, Palmyra Ramius L Bobbi-ET



Milk	271
PTA Pro	26
% Pro	0.01
PTA Fat	32
% Fat	0.01
DPR	0.3
PL	1.2
SCR	
SCS	3.04
Milk Speed	97
Milk Temp	100

0 dtrs 0 herds 40% rel

Sire: Palmyra Berkely Reagan-ET
Dam: Palmyra Aclaim Bobbie

RRP
\$24.00

Physical Trait Evaluation

0 dtrs 0 herds 36% rel

PTA Type	UDC	PTI	Net Merit \$
0.8	0.56	500	261
Stature	Short		1.0
Strength	Narrow		0.0
Body Depth	Shallow		0.4
Dairyness	Thick		0.7
Rump (side View)	High Pins		-0.2
Rump Width	Narrow		-0.4
Rear Leg (Side View)	Posty		-0.5
Foot Angle	Low Angle		0.2
Fore Udder	Loose		0.9
Rear Udder Height	Low		0.8
Rear Udder Width	Narrow		0.8
Suspensory Ligament	Weak		0.2
Udder Depth	Deep		0.7
Teats (Front View)	Wide		0.1
Test Length	Short		-0.2

Palmyra Calimero Blackjack

14AY00031

BLACKJACK

Calimero x Tri-Star

A22

Blackjack Dam, Palmyra Tri Star Brooke



Milk	571
PTA Pro	9
% Pro	-0.06
PTA Fat	-1
% Fat	-0.13
DPR	-2.5
PL	-1.9
SCR	0.7
SCS	3.05
Milk Speed	99
Milk Temp	103

186 dtrs 112 herds 90% rel

Sire: Margot Calimero VG85
Dam: Conebella Percy's Tiva VG88

RRP
\$22.00

Physical Trait Evaluation

45 dtrs 32 herds 80% rel

PTA Type	UDC	PTI	Net Merit \$
1.4	0.64	442	-3
Stature	Short		0.6
Strength	Narrow		-0.9
Body Depth	Shallow		-0.1
Dairyness	Thick		1.7
Rump (side View)	High Pins		-1.2
Rump Width	Narrow		0.6
Rear Leg (Side View)	Posty		0.1
Foot Angle	Low Angle		-0.6
Fore Udder	Loose		1.0
Rear Udder Height	Low		2.4
Rear Udder Width	Narrow		1.9
Suspensory Ligament	Weak		1.8
Udder Depth	Deep		0.5
Teats (Front View)	Wide		0.7
Test Length	Short		0.3

Visserdale Selwood P Samson

7AY00117

SAMSON

Prime x Remington

A12

Samson Dam, Visserdale Rem Sunray-ET



Milk	387
PTA Pro	19
% Pro	0.01
PTA Fat	18
% Fat	-0.02
DPR	-1.2
PL	0.5
SCR	
SCS	2.88
Milk Speed	101
Milk Temp	97

0 dtrs 0 herds 47% rel

Sire: De La Plaine Prime
Dam: Visserdale Rem Sunray EX90

RRP
\$22.00

Physical Trait Evaluation

0 dtrs 0 herds 38% rel

PTA Type	UDC	PTI	Net Merit \$
0.9	0.51	475	136
Stature	Short		1.5
Strength	Narrow		0.7
Body Depth	Shallow		0.6
Dairyness	Thick		0.4
Rump (side View)	High Pins		0.2
Rump Width	Narrow		0.7
Rear Leg (Side View)	Posty		-0.3
Foot Angle	Low Angle		0.2
Fore Udder	Loose		0.7
Rear Udder Height	Low		0.4
Rear Udder Width	Narrow		0.2
Suspensory Ligament	Weak		0.9
Udder Depth	Deep		0.9
Teats (Front View)	Wide		-0.2
Test Length	Short		-0.1

Conebella Dixon's Timothy

7AY00119

TIMOTHY

Dixon x Percy

A11

Timothy Dam, Conebella Percys Tiva



Milk	687
PTA Pro	41
% Pro	0.05
PTA Fat	52
% Fat	0.07
DPR	-0.2
PL	0.3
SCR	-1.6
SCS	2.85
Milk Speed	100
Milk Temp	99

0 dtrs 0 herds 41% rel

Sire: Maple-Dell O Dixon
Dam: Palmyra Tri-Star Brooke EX90

RRP
\$26.00

Physical Trait Evaluation

0 dtrs 0 herds 37% rel

PTA Type	UDC	PTI	Net Merit \$
0.9	-0.08	545	363
Stature	Short		2.3
Strength	Narrow		0.6
Body Depth	Shallow		0.5
Dairyness	Thick		0.8
Rump (side View)	High Pins		0.5
Rump Width	Narrow		1.4
Rear Leg (Side View)	Posty		0.0
Foot Angle	Low Angle		0.5
Fore Udder	Loose		0.3
Rear Udder Height	Low		0.4
Rear Udder Width	Narrow		0.6
Suspensory Ligament	Weak		0.4
Udder Depth	Deep		-0.2
Teats (Front View)	Wide		-0.5
Test Length	Short		0.2

Riversleigh Thompson

THOMPSON

Elmo x V Prince

A22

Sire:	Creighton Park Elmo 2108 th
Dam:	Riversleigh Prince Tulip 12 th VG89
Herd Book:	5139
NASIS:	12ISP16
Breeder:	Riversleigh Illawarras, Tatura VIC

RRP \$20.00



Outstanding Production & Pedigree

Dam is VG89 3rd lactation, Grand Dam EX90 3E STP, Great Grand Dam VG87

Dam was Victorian Red Cow On Farm Challenge Champion 2015. Tulip won her class again in 2017



THOMPSON



THOMPSON Dam, Riversleigh Prince Tulip 12



Riversleigh Prince Tulip 10

Riversleigh Alston Montagna

MONTAGNA

Elmo x Distrigene

A12

Sire:	Creighton Park Elmo 2108 th
Dam:	Alston Distrigene Madeline
Herd Book:	5140
NASIS:	12ISP16
Breeder:	M Tuhan & D Patterson, Tatura, VIC

RRP \$20.00



EX90 Dam with three sisters VG or EX

Longevity is a feature of this family

Maternal sister to Montagna - Riversleigh Alston Madeline recently scored EX90 on 3rd Lactation. She is a 3x class winner at IDW.



MONTAGNA



Alston Distrigene Madeline



Riversleigh Alston Madeline, Maternal Sister

Gorbro Joans Jazz

JAZZY

ABSManu x Fradon Jet-Red

Sire:	Eagle Park Manu
Dam:	Llandoverly JR Joan 982 EX94
Herd Book:	-
NASIS:	12ISP17
Breeder:	Gorbro Holsteins, Cohuna, VIC

RRP \$22.00



Llandoverly Joan 982 EX94

3yrs. 10 months 10681ltrs 376 fat 3.5% 373 Protein 3.5% 305 days

1st 3yr. Old Reserve Intermediate Champion IDW 2015

1st 4 yr. Old and Honourable Mention Champion IDW 2016

1st 5yr. Old and Reserve Champion IDW 2017

1st Mature Cow, Best udder of Show and Grand Champion IDW 2018

Reserve Supreme Champion IDW 2018

Gdam: Llandoverly Futurions Joan EX90

5yrs. 11 months 9643ltrs 480 Fat 4.8% 308 Protein 3.2% 305 days

Reserve Champion Cow IDW



JAZZY



Llandoverly JR Joan 982 EX94



Llandoverly JR Joan 982 EX94

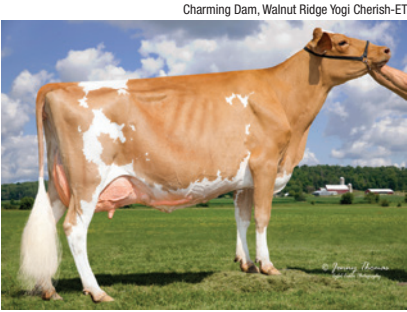
Walnut Ridge Prince Charming

7G00472

CHARMING

Pilot x Yogibear

A22



Milk	-233
PTA Pro	3
% Pro	0.06
PTA Fat	29
% Fat	0.23
DPR	1.3
PL	2.4
SCR	-1.3
SCS	2.88
FLC	1.4

0 dtrs 0 herds 46% rel

Dam: Walnut Ridge Yogi Cherish-ET, VG87

Sire: Lindrian Grumpy Pilot

RRP
\$28.00

Physical Trait Evaluation 0 dtrs 0 herds 44% rel

PTA Type	UDC	PTI	Net Merit
1.8	1.4	82	261
Stature	Short		-1.2
Strength	Narrow		0.2
Body Depth	Shallow		-1.2
Dairyness	Thick		-0.6
Rump (side View)	High Pins		-2.4
Rump Width	Narrow		0.6
Rear Leg (Side View)	Posty		-0.2
Rear Leg (Rear View)	Hock In		0.1
Foot Angle	Low Angle		0.8
Fore Udder	Loose		1.7
Rear Udder Height	Low		0.6
Rear Udder Width	Narrow		-0.4
Suspensory Ligament	Weak		1.4
Udder Depth	Deep		1.9
Teats (Front View)	Wide		0.6
Test Length	Short		0.0

Spring Hill Jokes Jaguar-ET

7GU00458

JAGUAR

Conqueror x Tiller

A22



Milk	141
PTA Pro	-1
% Pro	-0.03
PTA Fat	5
% Fat	-0.01
DPR	0.5
PL	1.2
SCR	
SCS	2.77
FLC	0.70

66 dtrs 34 herds 86% rel

Dam: Dix Lee Tiller Joke

Sire: Les Jaonnets Cara Conqueror

RRP
\$26.00

Physical Trait Evaluation 41 dtrs 23 herds 80% rel

PTA Type	UDC	PTI	Net Merit
1.70	1.60	34	112
Stature	Short		-0.10
Strength	Narrow		-0.50
Body Depth	Shallow		-1.10
Dairyness	Thick		-0.10
Rump (side View)	High Pins		0.50
Rump Width	Narrow		-1.40
Rear Leg (Side View)	Posty		0.70
Rear Leg (Rear View)	Hock In		0.30
Foot Angle	Low Angle		0.40
Fore Udder	Loose		2.50
Rear Udder Height	Low		2.20
Rear Udder Width	Narrow		-0.10
Suspensory Ligament	Weak		0.00
Udder Depth	Deep		2.20
Teats (Front View)	Wide		0.40
Test Length	Short		-0.90

Ripley Farms Jag Newton

7G470

NEWTON

Jaguar x Alstar

A22



Milk	438
PTA Pro	10
% Pro	-0.02
PTA Fat	17
% Fat	-0.01
DPR	1.3
PL	3.2
SCR	
SCS	2.86
FLC	1

0 dtrs 0 herds 50% rel

Dam: Lang Haven Alstar Nae

Sire: Springhill Jokes Jaguar

RRP
\$24.00

Physical Trait Evaluation 0 dtrs 0 herds 48% rel

PTA Type	UDC	PTI	Net Merit
0.8	0.9	71	234
Stature	Short		-1.6
Strength	Narrow		-0.7
Body Depth	Shallow		-0.7
Dairyness	Thick		-0.7
Rump (side View)	High Pins		-1.5
Rump Width	Narrow		-0.3
Rear Leg (Side View)	Posty		0.5
Rear Leg (Rear View)	Hock In		0.4
Foot Angle	Low Angle		0.5
Fore Udder	Loose		2.4
Rear Udder Height	Low		0.9
Rear Udder Width	Narrow		-0.5
Suspensory Ligament	Weak		-0.9
Udder Depth	Deep		1.2
Teats (Front View)	Wide		1.0
Test Length	Short		-0.5

BLA Arl Novak Popeye

6GU00103

POPEYE

Novak x Aaron

A22



Milk	335
PTA Pro	10
% Pro	-0.01
PTA Fat	14
% Fat	-0.01
DPR	0.4
PL	2.3
SCR	
SCS	2.9
FLC	1.4

0 dtrs 0 herds 50% rel

Dam: BLA Arl Aarons Popcorn

Sire: Lang Haven Grumpy Novak

RRP
\$24.00

Physical Trait Evaluation 0 dtrs 0 herds 49% rel

PTA Type	UDC	PTI	Net Merit
1.4	1.3	66	190
Stature	Short		-0.4
Strength	Narrow		-0.5
Body Depth	Shallow		-1.2
Dairyness	Thick		0.6
Rump (side View)	High Pins		-0.6
Rump Width	Narrow		0.2
Rear Leg (Side View)	Posty		-0.4
Rear Leg (Rear View)	Hock In		0.5
Foot Angle	Low Angle		0.4
Fore Udder	Loose		0.8
Rear Udder Height	Low		1.4
Rear Udder Width	Narrow		0.4
Suspensory Ligament	Weak		1.3
Udder Depth	Deep		0.9
Teats (Front View)	Wide		1.7
Test Length	Short		0.8



AUSTRALIAN SIRES

INTERNATIONAL SIRES

BEEF SIRES

Looking for more information or other bulls available?
Head to genaust.com.au
You'll also find tips on how to better understand the information in this catalogue

HOW TO READ A BULL PROOF

Balanced Performance Index (BPI)

The Balanced Performance Index is an economic index that blends production, type and health traits for maximum profit.

Production ADI

Production traits are expressed in their units of measurement from a rolling base of 1, which represents the average cow currently milking in Australia. The reliability figure is an estimate of potential proof change based on the number of daughters, health, feed intake and genomic data. The higher the reliability of a trait, the lower the chance of proof movement.

Australian Selection Index (ASI)

Like the BPI, the ASI is expressed as a dollar value. This production based index is weighted using a similar rate of risk tolerance to what most Australian dairy farmers are paid for their milk. Index weightings are as follows: 85.5% for milk ADI + (1.75 x Fat kg ADI) - (0.21 x MMA ADI).

Survival

Survival is a measurement of the bull's daughter's ability to last in the herd. Bulls with ratings greater than 100 breed daughters that are likely to last longer in the herd.

Workability Traits

These are calculated from information provided by Australian farmers who participate in a recognised herd recording program. They are expressed as a percentage deviating +/- from the base (average) of 100. In this example, 102 for milking speed indicates that the bull is 2% above average for this trait i.e. his daughters are average with faster. The reliability percentage is generated from the number of daughters and contemporaries scored and the number of herds.

Overall Type & Mammary

Type is the assessment of the conformation of the bull's daughter. The base for Type is 100. All type traits have a standard deviation of 5 units. A bull that is 110 for a particular trait is 2 standard deviations above the base (average). This would place him in the top third of the population. A bull that is 110 for a particular trait is 2 standard deviations above the base and would be placed in the top 1% of the population.

MAEBULL
Friesian x Double
BPI 335
Pick Price \$24,000 RRP \$28,000

Production

100	110	120	130	140	150
100	110	120	130	140	150

Health Traits

100	110	120	130	140	150
100	110	120	130	140	150

Feed Efficiency

100	110	120	130	140	150
100	110	120	130	140	150

Reliability

100	110	120	130	140	150
100	110	120	130	140	150

Overall Type & Mammary

100	110	120	130	140	150
100	110	120	130	140	150

Bull Name

MAEBULL

Health Traits

Health traits such as Cell Count, Survival, Litterweight and Daughter Fertility are expressed as a percentage deviating +/- from the base (average) of 100. The reliability figure represents the amount of information that has been used to calculate the publishable data. An 'x' indicates that the reliability figure is too low to give a meaningful indication of what value you can expect to be inherited. For all traits, except longevity, a figure greater than 100 is more desirable. Longevity above 100 is an indicator of the bull siring heavier daughters, juck bulls below 100 for overall longevity indicator.

Reliability

Like the Workability and Health Traits Culling Index is expressed as a percentage deviating +/- from the base (average), which is set at base (average) of 100. Lower culling index here figures greater than 100.

Genetic Data

Each year a number of the major herd recording centres in Australia was provided to Genetica Australia to calculate these figures. The rating of each bull's breeding value. The data represents the average genetic length of the calves of the bull divided from the base average, e.g. a rating of 1.7 days means that the calves from that bull will be born 1.7 days earlier than the base average. The majority of bulls fall into the range of +/- 5 days.

Feed Saved

Feed Saved is a measure of the bull's daughter's efficiency in converting feed into milk. It combines genomic data with estimates of maintenance requirements to predict the feed intake of a bull's daughters. It is expressed as a percentage deviating +/- from the base (average) of 100. There are average no daughters will eat 100 kg less of feed than the daughters of an average bull. A bull that has an ABS of 100, then his bull daughters will eat 50 kg more feed than daughter of the average bull.

Type ADI

The reliability percentage is generated from the number of daughters and contemporaries classified and the number of herds.

HOW TO BETTER UNDERSTAND THE INFORMATION

Betta Casein Status

Production and Management Information - (U.S.)

Abbreviated Pedigree

Bull's Full Name

Bull's Short Name / Bull ID

MONTANA JSMONTANA

1HG MONTANALET

MONTEROSS X NUMERO UNO X DOMAN

DPI - Daughter Pregnancy Rate (U.S.)

DPI is a measure of the bull's daughter's ability to conceive and calve within 90 days of mating. It is expressed as a percentage deviating +/- from the base (average) of 100. The reliability figure represents the amount of information that has been used to calculate the publishable data. An 'x' indicates that the reliability figure is too low to give a meaningful indication of what value you can expect to be inherited. For all traits, except longevity, a figure greater than 100 is more desirable. Longevity above 100 is an indicator of the bull siring heavier daughters, juck bulls below 100 for overall longevity indicator.

PL - Productive Life (U.S.)

Productive life is a measure of the bull's daughter's ability to produce milk over her lifetime. It is expressed as a percentage deviating +/- from the base (average) of 100. The reliability figure represents the amount of information that has been used to calculate the publishable data. An 'x' indicates that the reliability figure is too low to give a meaningful indication of what value you can expect to be inherited. For all traits, except longevity, a figure greater than 100 is more desirable. Longevity above 100 is an indicator of the bull siring heavier daughters, juck bulls below 100 for overall longevity indicator.

SCE - Sire Culling Index (U.S.)

Like the Workability and Health Traits Culling Index is expressed as a percentage deviating +/- from the base (average), which is set at base (average) of 100. Lower culling index here figures greater than 100.

Sire Conception Rate (SCR)

Sire Conception Rate is a measure of the bull's daughter's ability to conceive and calve within 90 days of mating. It is expressed as a percentage deviating +/- from the base (average) of 100. The reliability figure represents the amount of information that has been used to calculate the publishable data. An 'x' indicates that the reliability figure is too low to give a meaningful indication of what value you can expect to be inherited. For all traits, except longevity, a figure greater than 100 is more desirable. Longevity above 100 is an indicator of the bull siring heavier daughters, juck bulls below 100 for overall longevity indicator.

Somatic Cell Score (SCS)

Somatic Cell Score is a measure of the bull's daughter's ability to produce milk with a low level of somatic cells. It is expressed as a percentage deviating +/- from the base (average) of 100. The reliability figure represents the amount of information that has been used to calculate the publishable data. An 'x' indicates that the reliability figure is too low to give a meaningful indication of what value you can expect to be inherited. For all traits, except longevity, a figure greater than 100 is more desirable. Longevity above 100 is an indicator of the bull siring heavier daughters, juck bulls below 100 for overall longevity indicator.

ABV - ABV (g) Information

ABV is a measure of the bull's daughter's ability to produce milk with a low level of somatic cells. It is expressed as a percentage deviating +/- from the base (average) of 100. The reliability figure represents the amount of information that has been used to calculate the publishable data. An 'x' indicates that the reliability figure is too low to give a meaningful indication of what value you can expect to be inherited. For all traits, except longevity, a figure greater than 100 is more desirable. Longevity above 100 is an indicator of the bull siring heavier daughters, juck bulls below 100 for overall longevity indicator.

TPI - Total Performance Index (U.S.)

TPI is a measure of the bull's daughter's ability to produce milk with a low level of somatic cells. It is expressed as a percentage deviating +/- from the base (average) of 100. The reliability figure represents the amount of information that has been used to calculate the publishable data. An 'x' indicates that the reliability figure is too low to give a meaningful indication of what value you can expect to be inherited. For all traits, except longevity, a figure greater than 100 is more desirable. Longevity above 100 is an indicator of the bull siring heavier daughters, juck bulls below 100 for overall longevity indicator.

U.S. Linear Type Information (U.S.)

U.S. Linear Type Information is a measure of the bull's daughter's ability to produce milk with a low level of somatic cells. It is expressed as a percentage deviating +/- from the base (average) of 100. The reliability figure represents the amount of information that has been used to calculate the publishable data. An 'x' indicates that the reliability figure is too low to give a meaningful indication of what value you can expect to be inherited. For all traits, except longevity, a figure greater than 100 is more desirable. Longevity above 100 is an indicator of the bull siring heavier daughters, juck bulls below 100 for overall longevity indicator.

HerdInsights

Year Round Reproductive and Health
Monitoring at your fingertips

Cloud Based, Multimetric Smart Collar

For more information, please contact a Genetics Australia Representative, or call 1800 039 047
Alternatively visit our website genaust.com.au for more information

Genetics AUSTRALIA
Breeding better Australian herds

Genetics Australia Co-Operative Limited

PO Box 195, BACCHUS MARSH, VIC 3340, AUSTRALIA

P: +61 3 5367 3888 F: +61 3 5367 5100 Freecall: 1800 039 047

www.genaust.com.au

ORDERS & CUSTOMER SERVICE

T: 03 5367 3888
E: orders@genaust.com.au

Nigel Semmens BEEF SALES MANAGER

M: 0439 417 941
E: nsemmens@genaust.com.au

Coleman Baulch REGIONAL SALES MANAGER

Western Victoria, East Gippsland & Tasmania
M: 0429 473 563
E: cbaulch@genaust.com.au

Gerard Collins SALES REPRESENTATIVE

Northern Victoria
M: 0428 387 276
E: gcollins@genaust.com.au

Anthony Shelly CHIEF EXECUTIVE OFFICER

M: 0408 529 410
E: ashelly@genaust.com.au

Mike Huth FIELD SALES MANAGER

Western Victoria, Mount Gambier &
Central Gippsland
M: 0409 555 042
E: mhuth@genaust.com.au

Rodney Brooks SALES REPRESENTATIVE

Western Victoria, South East South
Australia, South & North Coast NSW
M: 0408 741 034
E: rbrooks@genaust.com.au

Ian Noakes SALES REPRESENTATIVE

Western Australia
M: 0409 297 805
E: inoakes@genaust.com.au

Peter Thurn BREEDING & GENETICS MANAGER

M: 0417 575 986
E: pthurn@genaust.com.au

Gerard Brislin REGIONAL SALES MANAGER

Gippsland & Tasmania
M: 0408 107 019
E: gbrislin@genaust.com.au

Andrew Medhurst SALES REPRESENTATIVE

Northern Victoria & Far South Coast NSW
M: 0417 575 932
E: amedhurst@genaust.com.au

John Harle SALES REPRESENTATIVE

Queensland & NSW
T: 07 3818 0564
E: jharle@genaust.com.au

Graeme Cowan MERCHANDISE MANAGER

T: 03 5367 9221
E: gcowan@genaust.com.au

Greg Tiller REGIONAL SALES MANAGER

Northern Victoria, Riverina NSW, Fleurieu &
Hills South Australia
M: 0407 366 985
E: gtiller@genaust.com.au

Ash Hogg SALES REPRESENTATIVE

Northern Victoria
M: 0407 842 144
E: ahogg@genaust.com.au