

Sire Directory

Spring 2018



AltaRABO

Crackholm AltaRABO Dasha VG-88-3YR
Crackholm Holsteins; Richmond, QC



Alta ADVANTAGE

**GET THE RIGHT GENETICS FOR YOUR DAIRY WHEN YOU
PARTNER WITH ALTA TO CUSTOMIZE YOUR GENETIC PLAN.**



Set your emphasis on the production, health & type traits that drive your farm's profit.



Get priority access
and a no hassle
approach to the
right genetics to
fit your needs.



We help implement
your plan,
rank your females,
and continually
monitor results.

Alta ADVANTAGE Sires

Code	Name	TPI	NM\$	CFP	PL	LIV	DPR	SCS	SCE	SSB	DSB	PTAT	UDC	FLC	BWC	DC
011H012159	AltaLIAISON	2857	964	159	6.7	2.6	3.4	2.72	6.6	6.6	3.5	1.75	1.6	1.43	0.55	1.75
011H012178	AltaHOTHAND	2837	904	154	6	2.4	2.1	2.66	6.7	7.3	5.9	2.51	2.38	1.72	-0.05	2.19
011H012158	AltaINGOLD	2829	878	151	5	-0.4	2.8	2.75	5.6	7.4	4.3	2.44	2.39	1.75	-0.31	1.59
011H012285	AltaNIXIE	2820	931	158	5.7	1.6	2.3	2.86	6.6	5.8	3.4	2.17	2.02	1.47	0.34	1.52
011H012259	AltaBACK9	2807	884	134	7.4	2.5	5.8	2.6	6.1	7	5.8	1.55	1.6	0.65	0.51	0.86
		2830	912.2	151.2	6.2	1.7	3.3	2.72	6.32	6.8	4.6	2.084	1.998	1.404	0.208	1.582

Alta Proven Sires

Code	Name	TPI	NM\$	CFP	PL	LIV	DPR	SCS	SCE	SSB	DSB	PTAT	UDC	FLC	BWC	DC
011H011478	AltaLEAF	2712	834	163	4.5	1.6	0.9	2.75	7.4	6.6	6.8	2.30	1.51	1.19	0.64	2.32
011H011437	AltaSPRING	2663	750	132	4.4	-1.2	1.5	3.00	8.6	7.7	5.1	2.38	3.21	1.49	0.50	1.47
011H011531	AltaSABRE	2624	690	89	7.7	3.4	4.2	2.48	7.1	7.3	7.6	1.96	1.34	1.67	1.07	1.50
011H011493	AltaHOTROD	2616	668	140	2.8	0.3	2.4	2.93	7.1	7.7	7.9	2.43	1.56	1.28	1.49	2.38
011H011523	AltaHOTSHOT	2576	823	129	5.8	3.0	3.6	2.88	5.4	5.2	3.6	0.66	1.71	0.67	0.25	-0.30
		2638.2	753	130.6	5.0	1.4	2.5	2.81	7.12	6.9	6.2	1.95	1.87	1.26	0.79	1.47

[illegible]

Ansal Hotrod 460 | Italy



- ▲ Great Production and High Type
- ▲ #1 Type bull Top 50 and plus for DPR (+2.4)
- ▲ A2A2 - High Demand

TPI 2616
NM\$ 668

CONFORMATION (Based on 331 Daughters in 118 Herds)

	-2	-1	0	1	2		
Stature						+3.77	Tall
Strength						+1.61	Strong
Body Depth						+1.91	Deep
Dairy form						+2.20	Open
Rump Angle						+2.41	Sloped
Thurl Width						+2.05	Wide
R. Legs-S View						-0.51	Posty
R. Legs-R View						+2.21	Straight
Foot Angle						+1.91	Steep
F&L Score						+1.82	High
F. Udder Att.						+2.57	Strong
R. Udder Ht.						+2.45	High
R. Udder Wid.						+2.25	Wide
Udder Cleft						+2.60	Strong
Udder Depth						+2.12	Shallow
F. Teat Place						+2.67	Close
R. Teat Place						+2.97	Close
Teat Length						-0.88	Short

AltaHOTROD 011H011493

GLEN-D-HAVEN ALTAHOTROD
JEROD X AltaIOTA
HOUSAM000055618778 | DOB 9/5/2013

\$35 +gst

CDCB & HA-USA Genetic Evaluations 08/2018

Type A2

45% Black

CONFORMATION

PTAT	2.43	UDC	1.56
FLC	1.28	Rel	94%

PRODUCTION (700 Daughters in 182 Herds)

Milk	2014 Lbs			Rel	98%
Protein	67	Lbs	+0.02%	Cheese Merit	\$ 681
Fat	73	Lbs	-0.01%		

HEALTH

PL	2.8	DPR	2.4
LIV	+0.3	CCR	3.0
SCS	2.93	HCR	3.2

CALVING TRAITS

Sire Calving Ease	7.1	99 % R	8915 Observ	
Dtr Calving Ease	5.0	93 % R	292 Observ	474 dtr.
Sire stillbirth	7.7	97 % R	7972 Observ	
Daughter stillbirth	7.9	92 % R	311 Observ	493 dtr.

Cottonwood Sabre 16011
USA



- ▲ Health and Fertility A2A2 Superstar
- ▲ PL +7.7 and DPR +4.2 SCS 2.48
- ▲ Perfect balance of Stature to Strength

TPI 2624
NM\$ 690

CONFORMATION (Based on 52 Daughters in 12 Herds)

	-2	-1	0	1	2		
Stature						+0.91	Tall
Strength						+1.29	Strong
Body Depth						+0.89	Deep
Dairy form						+0.94	Open
Rump Angle						-1.19	High Pins
Thurl Width						+1.76	Wide
R. Legs-S View						-0.49	Posty
R. Legs-R View						+1.67	Straight
Foot Angle						+1.37	Steep
F&L Score						+1.74	High
F. Udder Att.						+1.19	Strong
R. Udder Ht.						+2.10	High
R. Udder Wid.						+1.93	Wide
Udder Cleft						+1.29	Strong
Udder Depth						+0.84	Shallow
F. Teat Place						+0.86	Close
R. Teat Place						+0.82	Close
Teat Length						-0.42	Short

AltaSABRE 011H011531

BOMAZ ALTASABRE-ET
JACEY X ROBUST
HOUSAM000072615076 | DOB 12/28/2013

\$28 +gst | \$45 sexed +gst

CDCB & HA-USA Genetic Evaluations 08/2018



10% Black

CONFORMATION

PTAT	1.96	UDC	1.34
FLC	1.67	Rel	88%

PRODUCTION (333 Daughters in 54 Herds)

Milk	1044	Lbs		Rel	96%
Protein	54	Lbs	+0.08%	Cheese Merit	\$ 737
Fat	35	Lbs	-0.01%		

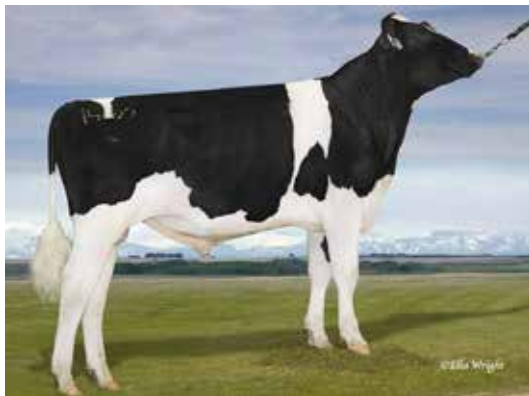
HEALTH

PL	7.7	DPR	4.2
LIV	+3.4	CCR	6.0
SCS	2.48	HCR	4.9

CALVING TRAITS

Sire Calving Ease	7.1	98 % R	3765 Observ	
Dtr Calving Ease	5.8	80 % R	178 Observ	178 dtr.
Sire stillbirth	7.3	95 % R	3923 Observ	
Daughter stillbirth	7.6	82 % R	181 Observ	181 dtr.

Daughter proven sires



- ▲ Extreme Production and great Health and Fertility
- ▲ Smaller Frames and longer Teats
- ▲ Reliable calving ease

TPI 2572

NM\$ 810

CONFORMATION (Based on 30 Daughters in 12 Herds)

	-2	-1	0	1	2		
Stature						-0.54	Short
Strength						-0.44	Frail
Body Depth						-0.82	Shallow
Dairy form						+0.63	Open
Rump Angle						-0.66	High Pins
Thurl Width						+0.07	Wide
R. Legs-S View						+0.30	Sickle
R. Legs-R View						+1.09	Straight
Foot Angle						+0.25	Steep
F&L Score						+1.13	High
F. Udder Att.						+0.29	Strong
R. Udder Ht.						+1.35	High
R. Udder Wid.						+1.24	Wide
Udder Cleft						+0.21	Strong
Udder Depth						-0.25	Deep
F. Teat Place						+0.53	Close
R. Teat Place						+0.75	Close
Teat Length						+0.96	Long

AltaMEGLO 011H011499

NEW

MR BOMAZ ALTAMEGLO-ET
SUPERSIRE X FREDDIE
HOUSAM000072615015 | DOB 9/10/2013

\$24 +gst | \$50 sexed +gst

CDCB & HA-USA Genetic Evaluations 08/2018



CONFORMATION

PTAT	0.76	UDC	0.75
FLC	1.27	Rel	87%

PRODUCTION (688 Daughters in 54 Herds)

Milk	1962 Lbs	Rel	98%
Protein	62 Lbs	+0.01%	Cheese Merit
Fat	73 Lbs		\$ 812

HEALTH

PL	6.2	DPR	3.6
LIV	+2.3	CCR	5.3
SCS	3.15	HCR	2.0

CALVING TRAITS

Sire Calving Ease	4.9	99 % R	8335 Observ	
Dtr Calving Ease	4.2	84 % R	264 Observ	264 dtr.
Sire stillbirth	5.4	98 % R	6830 Observ	
Daughter stillbirth	5.0	88 % R	348 Observ	348 dtr.

AltaCORNELL 011H011440

KOEPON ALTACORNELL
SUPERSIRE X MAN-O-MAN
HONLDM000767081320 | DOB 6/11/2013

\$22 +gst

CDCB & HA-USA Genetic Evaluations 08/2018



CONFORMATION

PTAT	1.52	UDC	1.95
FLC	0.85	Rel	89%

PRODUCTION (1249 Daughters in 211 Herds)

Milk	1658 Lbs	Rel	96%
Protein	50 Lbs	0.00%	Cheese Merit
Fat	73 Lbs	+0.04%	\$ 769

HEALTH

PL	5.9	DPR	1.3
LIV	+3.3	CCR	1.9
SCS	2.86	HCR	-0.2

CALVING TRAITS

Sire Calving Ease	6.1	99 % R	8049 Observ	
Dtr Calving Ease	5.0	85 % R	213 Observ	466 dtr.
Sire stillbirth	6.0	97 % R	7732 Observ	
Daughter stillbirth	5.1	87 % R	219 Observ	472 dtr.



- ▲ High production & improved Health
- ▲ Moderate, open frames with a no holes udder profile
- ▲ Extreme short gestation -4.2 days

TPI 2528

NM\$ 765

CONFORMATION (Based on 288 Daughters in 66 Herds)

	-2	-1	0	1	2		
Stature						+1.10	Tall
Strength						+0.51	Strong
Body Depth						+0.28	Deep
Dairy form						+0.75	Open
Rump Angle						+1.23	Sloped
Thurl Width						+0.07	Wide
R. Legs-S View						-0.77	Posty
R. Legs-R View						+0.34	Straight
Foot Angle						+1.04	Steep
F&L Score						+1.16	High
F. Udder Att.						+1.40	Strong
R. Udder Ht.						+3.12	High
R. Udder Wid.						+2.87	Wide
Udder Cleft						+1.40	Strong
Udder Depth						+1.22	Shallow
F. Teat Place						+1.26	Close
R. Teat Place						+1.67	Close
Teat Length						-0.08	Short

Daughter proven sires



Cottonwood Leaf 914

AltaLEAF 011H011478

\$28 +gst

DE-SU ALTALEAF-ET
AltaOAK X TRIGGER
HOUSAM000071813417 | DOB 6/21/2013

- ▲ Top 10 TPI sire, #1 for Type top 10
- ▲ 165lbs CFP and +DPR
- ▲ Great outcross pedigree

CONFORMATION Based on 231 Daughters in 66 Herds (95% Rel)

PTAT						+2.30
UDC						+1.51
FLC						+1.19
	-2	-1	0	1	2	
Stature						+1.90 Tall
Strength						+1.27 Strong
Body Depth						+1.99 Deep
Dairy form						+2.60 Open
Rump Angle						+0.37 Sloped
Thurl Width						+2.04 Wide
R. Legs-S View						+0.84 Sickie
R. Legs-R View						+1.48 Straight
Foot Angle						+0.51 Steep
F&L Score						+1.57 High
F. Udder Att.						+1.77 Strong
R. Udder Ht.						+2.39 High
R. Udder Wid.						+2.20 Wide
Udder Cleft						+1.37 Strong
Udder Depth						+1.32 Shallow
F. Teat Place						+1.37 Close
R. Teat Place						+1.40 Close
Teat Length						-0.27 Short

PRODUCTION

Milk	+2482 Lbs	99% Rel
Protein	+69 Lbs	-0.02%
Fat	+94 Lbs	+0.01%
Cheese Merit	+\$831	

HEALTH TRAITS

Productive Life	+4.5	Daughter Pregnancy Rate	+0.9
Livability	+1.6	Cow Conception Rate	2.2
Somatic Cell Score	+2.75	Heifer Conception Rate	3.4
Mastitis	1.4%	Metritis	0.8%
Ketosis	0.5%	Displaced Abomasum	0.2%
Retained Placenta		Milk Fever	-0.3%

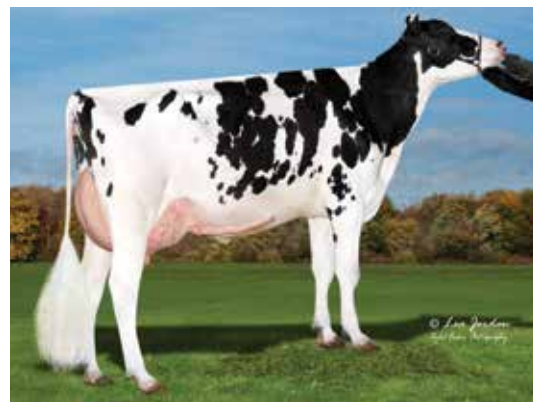
CALVING TRAITS

Sire Calving Ease	7.4%	99% Rel	5182 Observ
Dtr Calving Ease	5.6%	91% Rel	682 Observ 659dtr.
Sire stillbirth	6.6%	97% Rel	4775 Observ
Daughter stillbirth	6.8%	93% Rel	715 Observ 684dtr.

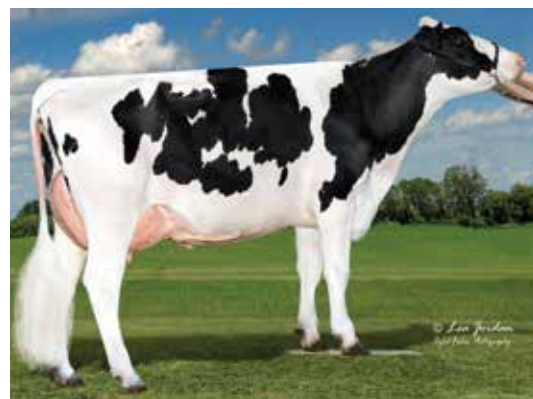
CDCB & HA-USA Genetic Evaluations 08/2018

TPI	2712
NM\$	834

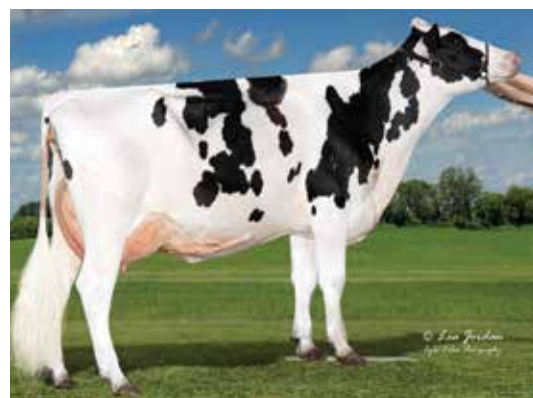
Type 10% Black



Cottonwood Leaf 915
Cottonwood Dairy; South Wayne, WI



Patterson Leaf 9302
Patterson Farms; Auburn, NY



Patterson Leaf 9354
Patterson Farms; Auburn, NY

Daughter proven sires



CONFORMATION Based on 1117 Daughters in 361 Herds (98% Rel)

PTAT						+2.38
UDC						+3.21
FLC						+1.49
	-2	-1	0	1	2	
Stature						+0.93 Tall
Strength						+0.72 Strong
Body Depth						+0.40 Deep
Dairy form						+1.18 Open
Rump Angle						-0.29 High Pin
Thurl Width						+1.70 Wide
R. Legs-S View						-1.08 Posty
R. Legs-R View						+2.18 Straight
Foot Angle						+1.24 Steep
F&L Score						+1.38 High
F. Udder Att.						+3.29 Strong
R. Udder Ht.						+4.32 High
R. Udder Wid.						+3.97 Wide
Udder Cleft						+1.78 Strong
Udder Depth						+2.30 Shallow
F. Teat Place						+1.59 Close
R. Teat Place						+1.75 Close
Teat Length						-0.09 Short

PRODUCTION

Milk	+1134 Lbs	99% Rel
Protein	+51 Lbs	+0.06%
Fat	+81 Lbs	+0.14%
Cheese Merit	+\$778	

HEALTH TRAITS

Productive Life	+4.4	Daughter Pregnancy Rate	+1.5
Livability	-1.2	Cow Conception Rate	3.7
Somatic Cell Score	+3.00	Heifer Conception Rate	3.3
Mastitis	0.6%	Metritis	1.5%
Ketosis	1.2%	Displaced Abomasum	0.7%
Retained Placenta	-0.3%	Milk Fever	-0.3%

CALVING TRAITS

Sire Calving Ease	8.6%	99% Rel	8808 Observ
Dtr Calving Ease	4.1%	98% Rel	994 Observ 1695dtr.
Sire stillbirth	7.7%	98% Rel	8704 Observ
Daughter stillbirth	5.1%	98% Rel	1024 Observ 1832dtr.

CDCB & HA-USA Genetic Evaluations 08/2018

AltaSPRING 011H011437

\$35 +gst

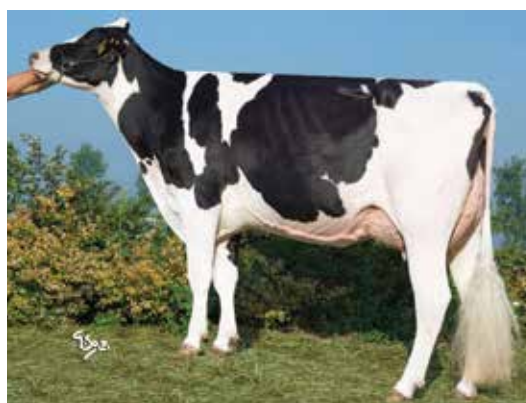
WESTENRADE ALTASPRING
MOGUL X GERARD
HONLDM000949033666 | DOB 2/22/2013

- ▲ #1 UDC bull top 50 TPI +3.21 UDC
- ▲ Moderate frames and good components
- ▲ A2A2 with an improved health profile

TPI 2663

NM\$ 750

Type A2



Barbiselle Spring 306 - Italy



Bomaz Spring 6901
Bomaz Farms; Hammond, WI



Halloverhill Spring Gypsy - UK



- ▲ Great Type and UDC with beautiful dairy frames
- ▲ CONCEPT PLUS, great female fertility and high health
- ▲ A2A2 with plus components

TPI 2584

NM\$ 706

AltaCORDIAL 011H011707

NEW

PEAK LC ALTACORDIAL-ET
AltaSPRING X SUPERSIRE
HONLDM000751487024 | DOB 5/23/2015

\$22 +gst

CDCB & HA-USA Genetic Evaluations 08/2018



CONFORMATION

PTAT	2.26	UDC	2.64
FLC	1.38	Rel	79%

PRODUCTION (0 Daughters in 0 Herds)

Milk	1039 Lbs	Rel	80%
Protein	43 Lbs	+0.04%	Cheese Merit
Fat	71 Lbs	+0.12%	\$ 729

HEALTH

PL	4.6	DPR	1.7
LIV	+1.5	CCR	3.5
SCS	2.82	HCR	1.7

CALVING TRAITS

Sire Calving Ease	7.7	94 % R	1226 Observ
Dtr Calving Ease	4.1	68 % R	0 Observ 0 dtr.
Sire stillbirth	7.5	87 % R	1776 Observ
Daughter stillbirth	5.3	63 % R	0 Observ 0 dtr.

CONFORMATION (Based on 0 Daughters in 0 Herds)

	-2	-1	0	1	2		
Stature						+0.98	Tail
Strength						+1.23	Strong
Body Depth						+0.83	Deep
Dairy form						+1.09	Open
Rump Angle						+0.35	Sloped
Thurl Width						+2.14	Wide
R. Legs-S View						-0.49	Posty
R. Legs-R View						+1.68	Straight
Foot Angle						+1.44	Steep
F&L Score						+1.37	High
F. Udder Att.						+2.72	Strong
R. Udder Ht.						+3.72	High
R. Udder Wid.						+3.42	Wide
Udder Cleft						+1.74	Strong
Udder Depth						+1.79	Shallow
F. Teat Place						+0.93	Close
R. Teat Place						+1.71	Close
Teat Length						+0.37	Long



- ▲ Extreme Health and Fertility AltaSPRING son
- ▲ Smaller stature with open ribs
- ▲ CONCEPT PLUS and A2A2

TPI 2633

NM\$ 803

AltaKARMA 011H011838

PEAK ALTAKARMA-ET
AltaSPRING X CASHCOIN
H0840M003133371421 | DOB 10/7/2015

\$22 +gst

CDCB & HA-USA Genetic Evaluations 08/2018



CONFORMATION

PTAT	1.55	UDC	2.97
FLC	0.80	Rel	78%

PRODUCTION (0 Daughters in 0 Herds)

Milk	1267 Lbs	Rel	79%
Protein	44 Lbs	+0.02%	Cheese Merit
Fat	66 Lbs	+0.07%	\$ 815

HEALTH

PL	7.0	DPR	3.2
LIV	+1.9	CCR	4.9
SCS	2.89	HCR	2.7

CALVING TRAITS

Sire Calving Ease	6.9	77 % R	124 Observ
Dtr Calving Ease	3.9	67 % R	0 Observ 0 dtr.
Sire stillbirth	6.5	64 % R	66 Observ
Daughter stillbirth	4.5	63 % R	0 Observ 0 dtr.

CONFORMATION (Based on 0 Daughters in 0 Herds)

	-2	-1	0	1	2		
Stature						+0.15	Tail
Strength						-0.52	Frail
Body Depth						-0.70	Shallow
Dairy form						+0.76	Open
Rump Angle						+0.52	Sloped
Thurl Width						+0.83	Wide
R. Legs-S View						-0.21	Posty
R. Legs-R View						+0.97	Straight
Foot Angle						+0.32	Steep
F&L Score						+0.73	High
F. Udder Att.						+2.99	Strong
R. Udder Ht.						+3.53	High
R. Udder Wid.						+3.25	Wide
Udder Cleft						+1.85	Strong
Udder Depth						+2.42	Shallow
F. Teat Place						+1.83	Close
R. Teat Place						+2.07	Close
Teat Length						-0.75	Short

Genomic proven sires



- ▲ #12 BPI sire at 340 BPI
- ▲ Great Dairy Frames
- ▲ High components, improved health and A2A2

TPI 2686

NM\$ 828

CONFORMATION (Based on 0 Daughters in 0 Herds)

	-2	-1	0	1	2		
Stature						+1.87	Tall
Strength						+1.66	Strong
Body Depth						+1.17	Deep
Dairy form						+0.74	Open
Rump Angle						+1.60	Sloped
Thurl Width						+1.38	Wide
R. Legs-S View						+0.11	Sickle
R. Legs-R View						+1.00	Straight
Foot Angle						+1.40	Steep
F&L Score						+1.51	High
F. Udder Att.						+2.66	Strong
R. Udder Ht.						+2.74	High
R. Udder Wid.						+2.52	Wide
Udder Cleft						+0.88	Strong
Udder Depth						+1.84	Shallow
F. Teat Place						+1.08	Close
R. Teat Place						+0.60	Close
Teat Length						-0.38	Short

AltaZONE 011H012130

PEAK ALTAZONE-ET
SUPERHERO X SILVER
H0840M003139851853 | DOB 12/12/2016

\$26 +gst

340 BPI

CDCB & HA-USA Genetic Evaluations 08/2018



CONFORMATION

PTAT	2.13	UDC	1.89
FLC	1.13	Rel	75%

PRODUCTION (0 Daughters in 0 Herds)

Milk	1228 Lbs	Rel	76%
Protein	53 Lbs	+0.06%	Cheese Merit \$ 861
Fat	87 Lbs	+0.15%	

HEALTH

PL	6.3	DPR	1.8
LIV	+2.3	CCR	2.8
SCS	2.67	HCR	0.2

CALVING TRAITS

Sire Calving Ease	6.7	62 % R	0 Observ
Dtr Calving Ease	3.8	55 % R	0 Observ 0 dtr.
Sire stillbirth	7.2	58 % R	0 Observ
Daughter stillbirth	4.7	53 % R	0 Observ 0 dtr.

8



MGGD: Ammon-Peachey Shauna-ET

- ▲ High Ranking BPI sire 330 BPI
- ▲ Moderate frames with brilliant Rear Udders
- ▲ A2A2 bull, high NM\$ 927

TPI 2761

NM\$ 927

CONFORMATION (Based on 0 Daughters in 0 Herds)

	-2	-1	0	1	2		
Stature						+0.67	Tall
Strength						+0.58	Strong
Body Depth						+0.78	Deep
Dairy form						+2.15	Open
Rump Angle						+0.46	Sloped
Thurl Width						+0.95	Wide
R. Legs-S View						+0.76	Sickle
R. Legs-R View						+1.20	Straight
Foot Angle						+0.36	Steep
F&L Score						+1.15	High
F. Udder Att.						+1.24	Strong
R. Udder Ht.						+2.19	High
R. Udder Wid.						+2.01	Wide
Udder Cleft						+1.09	Strong
Udder Depth						+0.19	Shallow
F. Teat Place						+1.40	Close
R. Teat Place						+1.49	Close
Teat Length						-0.92	Short

AltaSTAFFORD 011H012258

NEW

PEAK ALTASTAFFORD-ET
CHARLEY X AltaSPRING
H0840M003145229768 | DOB 7/30/2017

\$24 +gst

330 BPI

CDCB & HA-USA Genetic Evaluations 08/2018



45% Black

CONFORMATION

PTAT	1.56	UDC	1.27
FLC	1.06	Rel	74%

PRODUCTION (0 Daughters in 0 Herds)

Milk	1818 Lbs	Rel	76%
Protein	70 Lbs	+0.05%	Cheese Merit \$ 956
Fat	97 Lbs	+0.10%	

HEALTH

PL	5.4	DPR	1.7
LIV	+1.7	CCR	3.9
SCS	2.83	HCR	2.0

CALVING TRAITS

Sire Calving Ease	7.9	61 % R	0 Observ
Dtr Calving Ease	2.7	55 % R	0 Observ 0 dtr.
Sire stillbirth	6.7	57 % R	0 Observ
Daughter stillbirth	2.5	52 % R	0 Observ 0 dtr.



- ▲ #4 BPI(g) sire with a BPI of 356
- ▲ Negative stature with open frames
- ▲ 3.7 DPR and 7.5 PL
- ▲ A2A2

TPI 2793

NM\$ 957

AltaAROLDIS 011H012161

NEW

PEAK ALTAAROLDIS-ET
AltaROBSON X YODER
H0840M003142181110 | DOB 4/23/2017

\$32 +gst

356 BPI

CDCB & HA-USA Genetic Evaluations 08/2018



CONFORMATION

PTAT	1.29	UDC	1.74
FLC	1.11	Rel	74%

PRODUCTION (0 Daughters in 0 Herds)

Milk	762	Lbs		Rel	76%
Protein	50	Lbs	+0.10%	Cheese Merit	\$ 1008
Fat	88	Lbs	+0.21%		

HEALTH

PL	7.5	DPR	3.7
LIV	+3.9	CCR	5.3
SCS	2.68	HCR	5.1

CALVING TRAITS

Sire Calving Ease	5.8	62 % R	0 Observ
Dtr Calving Ease	3.0	55 % R	0 Observ 0 dtr.
Sire stillbirth	6.2	58 % R	0 Observ
Daughter stillbirth	3.6	52 % R	0 Observ 0 dtr.

CONFORMATION (Based on 0 Daughters in 0 Herds)

	-2	-1	0	1	2		
Stature						-0.01	Short
Strength						-0.39	Frail
Body Depth						-0.45	Shallow
Dairy form						+0.33	Open
Rump Angle						-0.11	High Pins
Thurl Width						-0.63	Narrow
R. Legs-S View						-0.45	Posty
R. Legs-R View						+1.16	Straight
Foot Angle						+0.57	Steep
F&L Score						+1.01	High
F. Udder Att.						+2.00	Strong
R. Udder Ht.						+2.14	High
R. Udder Wid.						+1.97	Wide
Udder Cleft						+0.30	Strong
Udder Depth						+1.50	Shallow
F. Teat Place						+0.48	Close
R. Teat Place						+0.67	Close
Teat Length						-0.72	Short



- ▲ AltaTOPSHOT son with a high BPI 330
- ▲ Moderate frames with extreme components
- ▲ A2A2 with a brilliant calving trait profile

TPI 2707

NM\$ 968

AltaGILMORE 011H012168

NEW

PEAK ALTAGILMORE-ET
AltaTOPSHOT X YODER
H0840M003138498826 | DOB 2/28/2017

\$26 +gst

330 BPI

CDCB & HA-USA Genetic Evaluations 08/2018



CONFORMATION

PTAT	0.51	UDC	0.64
FLC	0.10	Rel	74%

PRODUCTION (0 Daughters in 0 Herds)

Milk	1760	Lbs		Rel	77%
Protein	72	Lbs	+0.06%	Cheese Merit	\$ 1004
Fat	109	Lbs	+0.15%		

HEALTH

PL	5.5	DPR	1.7
LIV	+2.0	CCR	3.0
SCS	2.79	HCR	0.8

CALVING TRAITS

Sire Calving Ease	5.3	62 % R	0 Observ
Dtr Calving Ease	3.1	55 % R	0 Observ 0 dtr.
Sire stillbirth	5.4	59 % R	0 Observ
Daughter stillbirth	3.9	53 % R	0 Observ 0 dtr.

CONFORMATION (Based on 0 Daughters in 0 Herds)

	-2	-1	0	1	2		
Stature						+0.36	Tall
Strength						-0.27	Frail
Body Depth						-0.24	Shallow
Dairy form						+0.86	Open
Rump Angle						+0.65	Sloped
Thurl Width						+0.26	Wide
R. Legs-S View						+0.13	Sickle
R. Legs-R View						-0.03	Hock In
Foot Angle						-0.37	Low
F&L Score						+0.27	High
F. Udder Att.						+0.52	Strong
R. Udder Ht.						+1.50	High
R. Udder Wid.						+1.38	Wide
Udder Cleft						+0.06	Strong
Udder Depth						-0.19	Deep
F. Teat Place						-0.23	Wide
R. Teat Place						+0.18	Close
Teat Length						-0.20	Short

Daughter proven sires



CONFORMATION Based on 773 Daughters in 238 Herds (95% Rel)

PTAT						+2.07
UDC						+2.85
FLC						+1.50
	-2	-1	0	1	2	
Stature						+0.73 Tall
Strength						+0.42 Strong
Body Depth						+0.52 Deep
Dairy form						+1.31 Open
Rump Angle						+1.39 Sloped
Thurl Width						+1.88 Wide
R. Legs-S View						-0.38 Posty
R. Legs-R View						+2.04 Straight
Foot Angle						+1.11 Steep
F&L Score						+1.39 High
F. Udder Att.						+3.50 Strong
R. Udder Ht.						+3.61 High
R. Udder Wid.						+3.32 Wide
Udder Cleft						+0.71 Strong
Udder Depth						+2.51 Shallow
F. Teat Place						+1.40 Close
R. Teat Place						+0.83 Close
Teat Length						-0.93 Short

PRODUCTION

Milk	+864 Lbs	98% Rel
Protein	+35 Lbs	+0.03%
Fat	+68 Lbs	+0.13%
Cheese Merit	+\$664	

HEALTH TRAITS

Productive Life	+3.7	Daughter Pregnancy Rate	+0.8
Livability	-1.4	Cow Conception Rate	1.8
Somatic Cell Score	+2.61	Heifer Conception Rate	0.2
Mastitis	0.2%	Metritis	1.9%
Ketosis	0.7%	Displaced Abomasum	0.1%
Retained Placenta	-0.1%	Milk Fever	-0.4%

CALVING TRAITS

Sire Calving Ease	5.3%	99% Rel	15521 Observ
Dtr Calving Ease	4.5%	92% Rel	562 Observ 1356dtr.
Sire stillbirth	6.3%	97% Rel	14860 Observ
Daughter stillbirth	5.8%	92% Rel	491 Observ 1356dtr.

CDCB & HA-USA Genetic Evaluations 08/2018

AltaRABO 011H011379

\$28 +gst

LONE-OAK-ACRES ALTARABO-ET
MOGUL X OBSERVER
HOUSAM000069829746 | DOB 10/14/2012

- ▲ Exceptional Global performer, daughters milking in 8 countries
- ▲ A2A2 with genuine CE
- ▲ High component yields and great Type and Udders

TPI	2490
NM\$	641

Type A2 Ce



Crackholm AltaRABO Dasha VG-88-3YR-CAN
Crackholm Holsteins; Richmond, QC



Crackholm AltaRABO Dasha VG-88-3YR-CAN
Crackholm Holsteins; Richmond, QC



MGD: Lone-Oak-Acres PS Reese-ET



AltaROBLE 011H011380

\$35 +gst

LONE-OAK-ACRES ALTAROBLE-ET
MOGUL X OBSERVER
HOUSAM000069829747 | DOB 10/12/2012

- ▲ Still #1 for UDC and DPR improvement
- ▲ Improving with every proof round
- ▲ Lifted over 60 BPI points to 252 with more Australian daughters

CONFORMATION Based on 556 Daughters in 166 Herds (96% Rel)

PTAT						+2.70
UDC						+3.18
FLC						+1.72
	-2	-1	0	1	2	
Stature						+1.24 Tall
Strength						+0.59 Strong
Body Depth						+0.80 Deep
Dairy form						+1.59 Open
Rump Angle						+0.18 Sloped
Thurl Width						+1.94 Wide
R. Legs-S View						+0.09 Sickie
R. Legs-R View						+1.87 Straight
Foot Angle						+1.64 Steep
F&L Score						+1.81 High
F. Udder Att.						+4.30 Strong
R. Udder Ht.						+3.63 High
R. Udder Wid.						+3.34 Wide
Udder Cleft						+1.72 Strong
Udder Depth						+3.22 Shallow
F. Teat Place						+2.50 Close
R. Teat Place						+1.88 Close
Teat Length						-1.13 Short

PRODUCTION

Milk	+860 Lbs	98% Rel
Protein	+32 Lbs	+0.02%
Fat	+37 Lbs	+0.02%
Cheese Merit	+\$573	

HEALTH TRAITS

Productive Life	+4.0	Daughter Pregnancy Rate	+3.4
Livability	+0.4	Cow Conception Rate	4.2
Somatic Cell Score	+2.74	Heifer Conception Rate	1.3
Mastitis	1.7%	Metritis	1.7%
Ketosis	0.6%	Displaced Abomasum	0.1%
Retained Placenta	-0.3%	Milk Fever	-0.4%

CALVING TRAITS

Sire Calving Ease	7.5%	98% Rel	6733	Observ
Dtr Calving Ease	5.0%	92% Rel	693	Observ 1060dtr.
Sire stillbirth	7.4%	95% Rel	6542	Observ
Daughter stillbirth	5.5%	93% Rel	653	Observ 1060dtr.

CDCB & HA-USA Genetic Evaluations 08/2018

TPI	2491
NM\$	557



Jon-De Roble 7566
Jon-De Farms; Baldwin, WI



Bomaz Roble 6540
Bomaz Farms; Hammond, WI



Crackholm AltaROBLE Buckle VG-86-3YR
Crackholm Holsteins; Richmond, QC

Genomic proven sires



- ▲ Components and Dairy Frames
- ▲ 169 CFP +0.07 P% +0.29 F%
- ▲ Great Stature to Strength ratio

TPI 2656

NM\$ 846

CONFORMATION (Based on 0 Daughters in 0 Herds)

	-2	-1	0	1	2		
Stature						+1.20	Tall
Strength						+1.39	Strong
Body Depth						+1.34	Deep
Dairy form						+1.07	Open
Rump Angle						-0.41	High Pins
Thurl Width						+1.09	Wide
R. Legs-S View						+0.41	Sickle
R. Legs-R View						+1.60	Straight
Foot Angle						+0.77	Steep
F&L Score						+1.14	High
F. Udder Att.						+1.48	Strong
R. Udder Ht.						+1.58	High
R. Udder Wid.						+1.45	Wide
Udder Cleft						+0.79	Strong
Udder Depth						+0.36	Shallow
F. Teat Place						+0.76	Close
R. Teat Place						+0.62	Close
Teat Length						+0.36	Long

AltaCONCORD 011H011767

RAKEN ALTACONCORD
RUBICON X SUPERSONIC
HOUSAM000072495715 | DOB 7/7/2015

\$22 +gst

CDCB & HA-USA Genetic Evaluations 08/2018



CONFORMATION

PTAT	1.56	UDC	0.91
FLC	1.07	Rel	77%

PRODUCTION (0 Daughters in 0 Herds)

Milk	984 Lbs	Rel	79%
Protein	50 Lbs	+0.07%	Cheese Merit \$ 884
Fat	119 Lbs	+0.29%	

HEALTH

PL	3.9	DPR	1.3
LIV	+0.6	CCR	2.6
SCS	2.80	HCR	2.3

CALVING TRAITS

Sire Calving Ease	7.8	91 % R	358 Observ
Dtr Calving Ease	4.7	66 % R	0 Observ 0 dtr.
Sire stillbirth	6.8	82 % R	374 Observ
Daughter stillbirth	3.7	61 % R	0 Observ 0 dtr.

12



- ▲ Exceptional Type with a "No Holes" linear
- ▲ Great Stature to Strength bull
- ▲ Great Health and 3.2 DPR

TPI 2594

NM\$ 765

CONFORMATION (Based on 0 Daughters in 0 Herds)

	-2	-1	0	1	2		
Stature						+1.06	Tall
Strength						+1.16	Strong
Body Depth						+0.98	Deep
Dairy form						+1.52	Open
Rump Angle						0.00	High Pins
Thurl Width						+1.11	Wide
R. Legs-S View						+1.33	Sickle
R. Legs-R View						+1.01	Straight
Foot Angle						+0.40	Steep
F&L Score						+1.21	High
F. Udder Att.						+1.59	Strong
R. Udder Ht.						+2.57	High
R. Udder Wid.						+2.36	Wide
Udder Cleft						+0.63	Strong
Udder Depth						+0.80	Shallow
F. Teat Place						+0.60	Close
R. Teat Place						+0.63	Close
Teat Length						-0.02	Short

AltaMODER8 011H012029

NEW

PINE-TREE ALTAMODER8-ET
MODESTY X SUPERSIRE
H0840M003132117161 | DOB 4/28/2016

\$22 +gst

CDCB & HA-USA Genetic Evaluations 08/2018



CONFORMATION

PTAT	2.01	UDC	1.53
FLC	0.98	Rel	78%

PRODUCTION (0 Daughters in 0 Herds)

Milk	1095 Lbs	Rel	80%
Protein	43 Lbs	+0.03%	Cheese Merit \$ 785
Fat	80 Lbs	+0.14%	

HEALTH

PL	5.4	DPR	3.2
LIV	+2.7	CCR	4.4
SCS	2.87	HCR	1.1

CALVING TRAITS

Sire Calving Ease	7.2	63 % R	0 Observ
Dtr Calving Ease	3.8	61 % R	0 Observ 0 dtr.
Sire stillbirth	6.5	60 % R	0 Observ
Daughter stillbirth	4.9	59 % R	0 Observ 0 dtr.

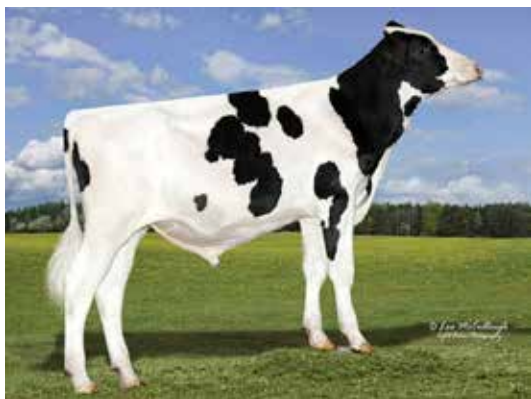
AltaROBSON

011H011778

BOMAZ ALTAROBSON-ET
RUBICON X BOB
HOUSAM000073953484 | DOB 8/24/2015

\$32 +gst | \$70 sexed +gst

CDCB & HA-USA Genetic Evaluations 08/2018



- ▲ The Global Transmitter
- ▲ Sire of elite ranking sons
- ▲ Great components and high health trait profile
DPR +3.9

TPI 2789

NM\$ 908

CONFORMATION (Based on 0 Daughters in 0 Herds)

	-2	-1	0	1	2		
Stature						+1.17	Tall
Strength						+1.11	Strong
Body Depth						+0.66	Deep
Dairy form						+0.59	Open
Rump Angle						+0.22	Sloped
Thurl Width						+1.24	Wide
R. Legs-S View						+0.30	Sickle
R. Legs-R View						+1.87	Straight
Foot Angle						+1.16	Steep
F&L Score						+1.27	High
F. Udder Att.						+2.15	Strong
R. Udder Ht.						+1.72	High
R. Udder Wid.						+1.58	Wide
Udder Cleft						-0.08	Weak
Udder Depth						+1.41	Shallow
F. Teat Place						+1.11	Close
R. Teat Place						+0.57	Close
Teat Length						-0.74	Short

CONFORMATION

PTAT	1.54	UDC	1.26
FLC	1.28	Rel	79%

PRODUCTION (0 Daughters in 0 Herds)

Milk	751	Lbs		Rel	80%
Protein	55	Lbs	+0.12%	Cheese Merit	\$ 966
Fat	95	Lbs	+0.24%		

HEALTH

PL	6.0	DPR	3.9
LIV	+2.0	CCR	5.6
SCS	2.77	HCR	5.4

CALVING TRAITS

Sire Calving Ease	6.7	98 % R	2498 Observ	
Dtr Calving Ease	2.9	66 % R	0 Observ	0 dtr.
Sire stillbirth	5.8	94 % R	2353 Observ	
Daughter stillbirth	3.5	62 % R	0 Observ	0 dtr.

AltaTOPSHOT

011H011779

BOMAZ ALTATOPSHOT-ET
SUPERSHOT X AltaEMBASSY
HOUSAM000073953444 | DOB 6/10/2015

\$32 +gst | \$70 sexed +gst

CDCB & HA-USA Genetic Evaluations 08/2018



- ▲ High component yields
- ▲ Exceptional Health Trait profile PL 6.9 DPR 2.9
- ▲ A2A2 BB
CONCEPT PLUS sire

TPI 2707

NM\$ 931

CONFORMATION (Based on 0 Daughters in 0 Herds)

	-2	-1	0	1	2		
Stature						+0.70	Tall
Strength						+0.53	Strong
Body Depth						+0.07	Deep
Dairy form						+0.61	Open
Rump Angle						+0.57	Sloped
Thurl Width						+1.17	Wide
R. Legs-S View						+0.22	Sickle
R. Legs-R View						-0.11	Hock In
Foot Angle						+0.15	Steep
F&L Score						+0.18	High
F. Udder Att.						+1.09	Strong
R. Udder Ht.						+1.58	High
R. Udder Wid.						+1.45	Wide
Udder Cleft						+0.74	Strong
Udder Depth						+0.49	Shallow
F. Teat Place						-0.14	Wide
R. Teat Place						+0.20	Close
Teat Length						+0.45	Long

CONFORMATION

PTAT	0.85	UDC	0.91
FLC	-0.01	Rel	78%

PRODUCTION (0 Daughters in 0 Herds)

Milk	1658	Lbs		Rel	80%
Protein	67	Lbs	+0.06%	Cheese Merit	\$ 964
Fat	95	Lbs	+0.12%		

HEALTH

PL	6.9	DPR	2.9
LIV	+3.6	CCR	3.7
SCS	2.74	HCR	0.8

CALVING TRAITS

Sire Calving Ease	6.2	99 % R	3996 Observ	
Dtr Calving Ease	4.1	67 % R	0 Observ	0 dtr.
Sire stillbirth	6.5	96 % R	3934 Observ	
Daughter stillbirth	4.8	63 % R	0 Observ	0 dtr.

Genomic proven sires



- ▲ Extreme DPR
AltaKERMIT son
- ▲ Triple 2 Type rated
- ▲ A2A2 CONCEPT PLUS
sire

TPI 2673

NM\$ 728

CONFORMATION (Based on 0 Daughters in 0 Herds)

	-2	-1	0	1	2		
Stature						+1.92	Tall
Strength						+0.88	Strong
Body Depth						+0.62	Deep
Dairy form						+1.30	Open
Rump Angle						+0.22	Sloped
Thurl Width						+1.20	Wide
R. Legs-S View						-1.14	Posty
R. Legs-R View						+2.44	Straight
Foot Angle						+2.05	Steep
F&L Score						+2.51	High
F. Udder Att.						+2.55	Strong
R. Udder Ht.						+3.24	High
R. Udder Wid.						+2.98	Wide
Udder Cleft						+1.33	Strong
Udder Depth						+1.98	Shallow
F. Teat Place						+1.16	Close
R. Teat Place						+1.02	Close
Teat Length						-0.73	Short

AltaOSCAR 011H012060

NEW

PEAK ALTAOSCAR-ET
AltaKERMIT X YODER
H0840M003138498720 | DOB 11/11/2016

\$22 +gst

CDCB & HA-USA Genetic Evaluations 08/2018



CONFORMATION

PTAT	2.49	UDC	2.16
FLC	2.28	Rel	75%

PRODUCTION (0 Daughters in 0 Herds)

Milk	1409 Lbs	Rel	76%
Protein	36 Lbs	-0.02%	Cheese Merit
Fat	49 Lbs	-0.01%	\$ 725

HEALTH

PL	6.5	DPR	5.1
LIV	+2.7	CCR	7.8
SCS	2.68	HCR	4.2

CALVING TRAITS

Sire Calving Ease	6.4	62 % R	0 Observ
Dtr Calving Ease	3.0	55 % R	0 Observ 0 dtr.
Sire stillbirth	6.6	58 % R	0 Observ
Daughter stillbirth	3.5	52 % R	0 Observ 0 dtr.

AltaKERSHAW 011H011794

PEAK ALTAKERSHAW-ET
BAYONET X MOGUL
H0840M003129128795 | DOB 5/17/2015

\$18 +gst

CDCB & HA-USA Genetic Evaluations 08/2018



CONFORMATION

PTAT	2.63	UDC	2.87
FLC	2.26	Rel	79%

PRODUCTION (0 Daughters in 0 Herds)

Milk	1041 Lbs	Rel	80%
Protein	45 Lbs	+0.05%	Cheese Merit
Fat	75 Lbs	+0.13%	\$ 770

HEALTH

PL	5.4	DPR	2.5
LIV	+3.2	CCR	3.2
SCS	2.95	HCR	0.7

CALVING TRAITS

Sire Calving Ease	7.5	89 % R	305 Observ
Dtr Calving Ease	5.8	67 % R	0 Observ 0 dtr.
Sire stillbirth	8.3	80 % R	345 Observ
Daughter stillbirth	9.1	63 % R	0 Observ 0 dtr.



- ▲ CONCEPT PLUS and New 511 CONCEPT PLUS for heifer bull
- ▲ Moderate Frames with wider Rear Teats
- ▲ Exceptional Health Trait profile 6.6 PL and 3.2 DPR

TPI 2697

NM\$ 895

AltaNIXER 011H011758

PEAK ALTANIXER-ET
YODER X SUPERSIRE
H0840M003125434762 | DOB 4/5/2015

\$28 +gst | \$55 sexed +gst

CDCB & HA-USA Genetic Evaluations 08/2018



CONFORMATION (Based on 0 Daughters in 0 Herds)

	-2	-1	0	1	2		
Stature						+0.58	Tall
Strength						+0.07	Strong
Body Depth						-0.21	Shallow
Dairy form						+0.60	Open
Rump Angle						+0.73	Sloped
Thurl Width						0.00	Narrow
R. Legs-S View						-1.01	Posty
R. Legs-R View						+0.57	Straight
Foot Angle						+0.02	Steep
F&L Score						+0.55	High
F. Udder Att.						+0.94	Strong
R. Udder Ht.						+2.14	High
R. Udder Wid.						+1.97	Wide
Udder Cleft						+0.18	Strong
Udder Depth						+1.10	Shallow
F. Teat Place						-0.70	Wide
R. Teat Place						-0.70	Wide
Teat Length						-0.25	Short

CONFORMATION

PTAT	0.84	UDC	1.20
FLC	0.45	Rel	79%

PRODUCTION (0 Daughters in 0 Herds)

Milk	1282	Lbs		Rel	79%
Protein	56	Lbs	+0.06%	Cheese Merit	\$ 929
Fat	88	Lbs	+0.14%		

HEALTH

PL	6.3	DPR	3.2
LIV	+2.5	CCR	6.2
SCS	2.74	HCR	2.8

CALVING TRAITS

Sire Calving Ease	5.6	99 % R	5778 Observ	
Dtr Calving Ease	2.7	66 % R	0 Observ	0 dtr.
Sire stillbirth	6.9	98 % R	5459 Observ	
Daughter stillbirth	3.3	62 % R	0 Observ	0 dtr.



- ▲ Components, Type, Health and CE in one complete package
- ▲ Lowers Pins and Lengthens Teats
- ▲ Extreme Health at 7.5 PL and high DPR 3.1

TPI 2605

NM\$ 763

AltaSTEEL 011H011724

PEAK ALTASTEEL-ET
SILVER X SUPERSIRE
H0840M003128365037 | DOB 4/6/2015

\$28 +gst

CDCB & HA-USA Genetic Evaluations 08/2018



CONFORMATION (Based on 0 Daughters in 0 Herds)

	-2	-1	0	1	2		
Stature						+1.38	Tall
Strength						+0.70	Strong
Body Depth						+0.20	Deep
Dairy form						+0.08	Open
Rump Angle						+0.86	Sloped
Thurl Width						+0.12	Wide
R. Legs-S View						-0.80	Posty
R. Legs-R View						+1.70	Straight
Foot Angle						+1.48	Steep
F&L Score						+1.66	High
F. Udder Att.						+2.70	Strong
R. Udder Ht.						+3.28	High
R. Udder Wid.						+3.02	Wide
Udder Cleft						+1.01	Strong
Udder Depth						+2.54	Shallow
F. Teat Place						+0.65	Close
R. Teat Place						+0.83	Close
Teat Length						+0.79	Long

CONFORMATION

PTAT	1.78	UDC	2.40
FLC	1.52	Rel	79%

PRODUCTION (0 Daughters in 0 Herds)

Milk	646	Lbs		Rel	80%
Protein	30	Lbs	+0.04%	Cheese Merit	\$ 789
Fat	67	Lbs	+0.16%		

HEALTH

PL	7.5	DPR	3.1
LIV	+2.3	CCR	3.9
SCS	2.60	HCR	2.0

CALVING TRAITS

Sire Calving Ease	5.8	97 % R	1866 Observ	
Dtr Calving Ease	2.8	68 % R	0 Observ	0 dtr.
Sire stillbirth	7.2	91 % R	1555 Observ	
Daughter stillbirth	4.0	63 % R	0 Observ	0 dtr.

Polled sires



- ▲ Homozygous Polled
- ▲ A2A2 sire

TPI 2214

NM\$ 424

CONFORMATION (Based on 0 Daughters in 0 Herds)

	-2	-1	0	1	2		
Stature						+1.82	Tall
Strength						-0.39	Frail
Body Depth						-0.26	Shallow
Dairy form						+1.17	Open
Rump Angle						+0.94	Sloped
Thurl Width						+0.99	Wide
R. Legs-S View						+0.85	Sickle
R. Legs-R View						+0.29	Straight
Foot Angle						+0.54	Steep
F&L Score						+0.96	High
F. Udder Att.						+1.54	Strong
R. Udder Ht.						+2.26	High
R. Udder Wid.						+2.08	Wide
Udder Cleft						-0.63	Weak
Udder Depth						+1.51	Shallow
F. Teat Place						-0.21	Wide
R. Teat Place						-0.63	Wide
Teat Length						-0.06	Short

AltaTRUM PP 011H011723

PEAK ALTATRUM PP-ET
POWERBALL-P X EARNHARDT P
H0840M003128365038 | DOB 4/4/2015

\$18 +gst

CDCB & HA-USA Genetic Evaluations 08/2018

A2

CONFORMATION

PTAT	1.14	UDC	1.14
FLC	0.48	Rel	79%

PRODUCTION (0 Daughters in 0 Herds)

Milk	1006 Lbs	Rel	80%
Protein	44 Lbs	+0.05%	Cheese Merit
Fat	36 Lbs	-0.01%	\$ 442

HEALTH

PL	0.8	DPR	2.4
LIV	+0.3	CCR	3.4
SCS	3.19	HCR	2.1

CALVING TRAITS

Sire Calving Ease	6.5	83 % R	602 Observ
Dtr Calving Ease	5.2	67 % R	0 Observ 0 dtr.
Sire stillbirth	6.6	72 % R	605 Observ
Daughter stillbirth	5.3	62 % R	0 Observ 0 dtr.

AltaBRICK P-RED 011H000584

STERK ALTABRICK P-RED
ALTA CASUAL P X AIKMAN
H0NLDM000662990464 | DOB 12/5/2015

\$22 +gst

CDCB & HA-USA Genetic Evaluations 08/2018

G-STAR

CONFORMATION

PTAT	0.87	UDC	0.90
FLC	0.22	Rel	74%

PRODUCTION (0 Daughters in 0 Herds)

Milk	888 Lbs	Rel	78%
Protein	50 Lbs	+0.08%	Cheese Merit
Fat	91 Lbs	+0.21%	\$ 781

HEALTH

PL	4.3	DPR	1.4
LIV	+2.9	CCR	2.3
SCS	2.94	HCR	0.8

CALVING TRAITS

Sire Calving Ease	7.3	69 % R	33 Observ
Dtr Calving Ease	6.4	57 % R	0 Observ 0 dtr.
Sire stillbirth	7.1	61 % R	72 Observ
Daughter stillbirth	5.9	55 % R	0 Observ 0 dtr.



- ▲ High component RED bull carrying the polled Gene
- ▲ High component yields, lowers pins & lengthens teats
- ▲ Moderate, stronger frames

TPI 2474

NM\$ 742

CONFORMATION (Based on 0 Daughters in 0 Herds)

	-2	-1	0	1	2		
Stature						+0.64	Tall
Strength						+0.84	Strong
Body Depth						+0.65	Deep
Dairy form						+0.53	Open
Rump Angle						+0.51	Sloped
Thurl Width						+0.23	Wide
R. Legs-S View						-0.13	Posty
R. Legs-R View						+0.14	Straight
Foot Angle						+0.36	Steep
F&L Score						+0.36	High
F. Udder Att.						+1.15	Strong
R. Udder Ht.						+1.43	High
R. Udder Wid.						+1.32	Wide
Udder Cleft						-0.11	Weak
Udder Depth						+0.75	Shallow
F. Teat Place						+0.60	Close
R. Teat Place						+0.27	Close
Teat Length						+0.23	Long



- ▲ Homozygous Polled A2A2
- ▲ High ranking Polled bull
- ▲ Great Type and UDC

TPI 2462

NM\$ 651

AltaREX PP 011H012098

KOEPON ALTAREX PP-ET
ANSWER PO X POWERBALL-P
HONLDM000685696167 | DOB 2/22/2017

\$24 +gst

CDCB & HA-USA Genetic Evaluations 08/2018



CONFORMATION (Based on 0 Daughters in 0 Herds)

	-2	-1	0	1	2		
Stature						+0.92	Tall
Strength						+0.55	Strong
Body Depth						+0.42	Deep
Dairy form						+1.30	Open
Rump Angle						-0.02	High Pins
Thurl Width						+0.44	Wide
R. Legs-S View						+0.16	Sickle
R. Legs-R View						+0.17	Straight
Foot Angle						+0.82	Steep
F&L Score						+0.83	High
F. Udder Att.						+2.38	Strong
R. Udder Ht.						+2.91	High
R. Udder Wid.						+2.68	Wide
Udder Cleft						+1.10	Strong
Udder Depth						+1.85	Shallow
F. Teat Place						+1.42	Close
R. Teat Place						+1.31	Close
Teat Length						-0.83	Short

CONFORMATION

PTAT	1.79	UDC	2.16
FLC	0.57	Rel	73%

PRODUCTION (0 Daughters in 0 Herds)

Milk	1340	Lbs		Rel	76%
Protein	42	Lbs	0.00%	Cheese Merit	\$ 655
Fat	58	Lbs	+0.03%		

HEALTH

PL	4.6	DPR	2.5
LIV	+2.6	CCR	3.2
SCS	2.98	HCR	2.0

CALVING TRAITS

Sire Calving Ease	7.2	61 % R	0 Observ	
Dtr Calving Ease	4.6	55 % R	0 Observ	0 dtr.
Sire stillbirth	6.5	56 % R	0 Observ	
Daughter stillbirth	5.7	53 % R	0 Observ	0 dtr.



- ▲ High ranking Polled carrier
- ▲ Great Type and UDC
- ▲ High component yields +152 CFP

TPI 2704

NM\$ 823

AltaMIGHTY P 011H011827

PEAK ALTAMIGHTY P-ET
POWERBALL-P X SUPERSIRE
H0840M003131131453 | DOB 8/23/2015

\$26 +gst

CDCB & HA-USA Genetic Evaluations 08/2018



CONFORMATION (Based on 0 Daughters in 0 Herds)

	-2	-1	0	1	2		
Stature						+2.44	Tall
Strength						+0.58	Strong
Body Depth						+0.97	Deep
Dairy form						+2.72	Open
Rump Angle						+1.32	Sloped
Thurl Width						+1.56	Wide
R. Legs-S View						+1.57	Sickle
R. Legs-R View						+0.47	Straight
Foot Angle						+0.25	Steep
F&L Score						+1.37	High
F. Udder Att.						+2.54	Strong
R. Udder Ht.						+2.93	High
R. Udder Wid.						+2.70	Wide
Udder Cleft						+1.21	Strong
Udder Depth						+2.09	Shallow
F. Teat Place						+1.98	Close
R. Teat Place						+1.68	Close
Teat Length						-0.54	Short

CONFORMATION

PTAT	2.53	UDC	1.96
FLC	0.67	Rel	79%

PRODUCTION (0 Daughters in 0 Herds)

Milk	1510	Lbs		Rel	80%
Protein	69	Lbs	+0.08%	Cheese Merit	\$ 865
Fat	83	Lbs	+0.09%		

HEALTH

PL	3.8	DPR	0.7
LIV	+1.3	CCR	2.7
SCS	2.85	HCR	2.7

CALVING TRAITS

Sire Calving Ease	7.6	83 % R	126 Observ	
Dtr Calving Ease	3.4	67 % R	0 Observ	0 dtr.
Sire stillbirth	6.7	73 % R	133 Observ	
Daughter stillbirth	3.3	62 % R	0 Observ	0 dtr.

CREATE MORE PREGNANCIES

through precision fertility management



Sexed semen fertility is not the same as conventional semen fertility. Data also shows that any given bull may perform well as conventional semen, but not as sexed, and vice versa.

So to help you manage your herd's genetics and fertility with precision, you now have access to two separate sire fertility evaluations.



**511
CONCEPT PLUS**

The innovative, **NEW 511 CONCEPT PLUS** designation tells you which bulls offer the best fertility on **Alta511 SEXED SEMEN**.



CONCEPT PLUS

The industry's most accurate sire fertility evaluation for nearly 20 years, **CONCEPT PLUS** tells you which sires create more pregnancies with **CONVENTIONAL** semen.

Work with your trusted Alta advisor to implement a precision approach to fertility management.





511

Sexed Bulls TPI ORDER

Code	Name	TPI	NM\$	Milk	P	F	PTAT	UDC/JUI	FLC	PL	DPR	HCR	CCR	SCS	SCE	SSB	511CP
011H011778	AltaROBSON	2789	908	751	55	95	1.54	1.26	1.28	6.0	3.9	5.4	5.6	2.77	6.7	5.8	
011H011736	AltaRECOIL	2756	820	1398	60	52	1.89	2.50	1.76	7.2	5.0	4.1	6.7	2.82	5.9	7.8	
011H011779	AltaTOPSHOT	2707	931	1658	67	95	0.85	0.91	-0.01	6.9	2.9	0.8	3.7	2.74	6.2	6.5	
011H011758	AltaNIXER	2697	895	1282	56	88	0.84	1.20	0.45	6.3	3.2	2.8	6.2	2.74	5.6	6.9	✓
011H012088	AltaACTOR	2645	709	1882	67	54	2.03	2.39	1.02	4.0	3.1	2.1	5.1	2.82	6.5	7.8	
011H011531	AltaSABRE	2624	690	1044	54	35	1.96	1.34	1.67	7.7	4.2	4.9	6.0	2.48	7.1	7.3	
011H011499	AltaMEGLO	2572	810	1962	62	73	0.76	0.75	1.27	6.2	3.6	2.0	5.3	3.15	4.9	5.4	
011H011939	ALTAMELVIN	2552	684	2115	78	40	1.18	1.42	1.01	5.4	2.7	2.3	4.5	2.92	6.6	6.6	✓
011H011841	AltaGHILLIE	2512	746	1286	49	67	0.98	1.19	0.61	5.9	1.6	2.0	2.9	2.65	5.3	6.2	
011H011380	AltaROBLE	2491	557	860	32	37	2.70	3.18	1.72	4.0	3.4	1.3	4.2	2.74	7.5	7.4	
011H011803	AltaEXTRA	2489	679	1403	50	68	1.30	1.38	0.44	4.5	2.0	1.7	3.6	2.75	7.5	6.8	
011H011314	AltaENTRUST	2477	694	416	39	74	0.68	0.61	1.01	3.6	3.2	2.1	4.9	2.72	6.6	7.2	
011H011513	AltaBURNER	2399	663	-273	11	56	1.16	1.89	0.98	7.8	2.3	2.4	4.2	2.58	4.8	5.4	
011H011138	AltaREGAL	2195	387	914	32	42	2.04	1.49	1.48	2.1	0.4	-2.0	-0.7	2.70	8.0	7.9	
011JE01348	AltaZIZIC {4}	214	696	1511	67	97	1.00	8.95	-0.27	2.9	-0.1	0.0	-0.5	2.74			
011JE01179	VICEROY	197	652	1594	63	81	0.80	9.17	-0.01	4.1	1.3	5.0	2.6	3.11			
011JE01358	AltaPIPELINE {3}	174	546	1475	53	63	1.30	12.18	0.20	3.7	1.0	2.3	1.6	2.86			
011JE01327	AltaRAZZLES {3}	145	460	915	38	49	2.20	21.39	1.56	3.2	1.4	1.0	1.8	3.03			✓

511 CP = High Fertility as Alta511 SexedULTRA™ semen

A2A2 Beta Casein Bulls TPI ORDER

CP = High Fertility CONCEPT PLUS

Code	Name	TPI	NM\$	Milk	P	F	PL	DPR	SCS	SCE	SSB	CCR	HCR	PTAT	UDC/JUI	FLC	CP
011H012161	AltaAROLDIS	2793	957	762	50	88	7.5	3.7	2.68	5.8	6.2	5.3	5.1	1.29	1.74	1.11	
011H011778	AltaROBSON	2789	908	751	55	95	6.0	3.9	2.77	6.7	5.8	5.6	5.4	1.54	1.26	1.28	✓
011H012258	AltaSTAFFORD	2761	927	1818	70	97	5.4	1.7	2.83	7.9	6.7	3.9	2.0	1.56	1.27	1.06	
011H011736	AltaRECOIL	2756	820	1398	60	52	7.2	5.0	2.82	5.9	7.8	6.7	4.1	1.89	2.50	1.76	✓
011H011779	AltaTOPSHOT	2707	931	1658	67	95	6.9	2.9	2.74	6.2	6.5	3.7	0.8	0.85	0.91	-0.01	✓
011H011758	AltaNIXER	2697	895	1282	56	88	6.3	3.2	2.74	5.6	6.9	6.2	2.8	0.84	1.20	0.45	✓
011H012060	AltaOSCAR	2673	728	1409	36	49	6.5	5.1	2.68	6.4	6.6	7.8	4.2	2.49	2.16	2.28	✓
011H011437	AltaSPRING	2663	750	1134	51	81	4.4	1.5	3.00	8.6	7.7	3.7	3.3	2.38	3.21	1.49	
011H011794	AltaKERSHAW	2651	746	1041	45	75	5.4	2.5	2.95	7.5	8.3	3.2	0.7	2.63	2.87	2.26	✓
011H011838	AltaKARMA	2633	803	1267	44	66	7.0	3.2	2.89	6.9	6.5	4.9	2.7	1.55	2.97	0.80	✓
011H011531	AltaSABRE	2624	690	1044	54	35	7.7	4.2	2.48	7.1	7.3	6.0	4.9	1.96	1.34	1.67	
011H011493	AltaHOTROD	2616	668	2014	67	73	2.8	2.4	2.93	7.1	7.7	3.0	3.2	2.43	1.56	1.28	
011H011741	AltaCAPO	2593	719	1055	61	71	4.0	2.3	2.81	7.4	6.8	3.8	2.6	1.59	1.27	1.52	
011H011706	AltaHELICON	2589	742	1193	46	72	5.4	2.1	2.90	7.3	7.4	3.6	3.5	1.96	2.63	0.87	✓
011H011707	AltaCORDIAL	2584	706	1039	43	71	4.6	1.7	2.82	7.7	7.5	3.5	1.7	2.26	2.64	1.38	✓
011H011499	AltaMEGLO	2572	810	1962	62	73	6.2	3.6	3.15	4.9	5.4	5.3	2.0	0.76	0.75	1.27	✓
011H011905	AltaFANTASTIC	2565	728	1618	63	60	5.6	2.1	2.71	7.2	7.4	2.9	0.9	1.46	1.31	0.61	✓
011H011598	AltaMENTO	2534	661	775	40	59	5.8	5.6	2.89	7.0	8.6	6.6	2.8	1.43	1.14	1.32	
011H011422	AltaJAKE	2506	605	1334	31	36	5.7	4.0	2.65	6.7	8.2	6.8	4.0	2.26	2.22	1.82	✓
011H011379	AltaRABO	2490	641	864	35	68	3.7	0.8	2.61	5.3	6.3	1.8	0.2	2.07	2.85	1.50	
011H011803	AltaEXTRA	2489	679	1403	50	68	4.5	2.0	2.75	7.5	6.8	3.6	1.7	1.30	1.38	0.44	
011H011650	AltaFIREUP	2483	730	752	28	76	5.5	1.4	2.78	6.8	7.6	3.7	1.6	1.30	2.05	0.84	✓
011H011314	AltaENTRUST	2477	694	416	39	74	3.6	3.2	2.72	6.6	7.2	4.9	2.1	0.68	0.61	1.01	
011H011652	AltaLAMBEAU	2472	607	1907	66	54	2.2	2.1	3.02	6.7	6.4	3.4	1.4	1.39	1.83	0.91	✓
011H011849	AltaLAUTALOVE	2465	697	1923	63	68	4.6	1.2	2.86	6.3	7.7	1.7	0.1	0.88	0.83	0.74	✓
011H012098	AltaREX PP	2462	651	1340	42	58	4.6	2.5	2.98	7.2	6.5	3.2	2.0	1.79	2.16	0.57	
011H011693	AltaWYNN	2456	581	313	30	42	5.9	3.4	2.63	8.6	7.8	4.5	0.5	1.86	2.21	1.65	✓
011H011747	AltaEXEMPLAR	2428	632	880	36	38	7.0	2.8	2.68	6.2	6.8	4.4	1.8	1.23	1.67	1.23	✓
011H011396	AltaSTALWART	2418	634	951	29	60	5.0	2.7	2.69	6.2	7.6	3.9	2.3	1.44	1.18	0.90	✓
011H011704	Alta1STLOOK	2407	686	106	28	81	4.9	1.0	2.75	6.3	6.4	2.3	0.3	1.22	1.55	0.27	✓
011H011682	AltaFUNKY	2394	609	608	35	75	3.6	0.7	2.88	5.9	7.4	1.2	0.6	1.97	1.67	0.86	✓
011H011686	AltaVISIONARY	2377	572	179	23	43	4.8	2.1	2.68	5.3	6.0	1.7	-0.3	1.66	2.90	1.31	✓
011H011723	AltaTRUM PP	2214	424	1006	44	36	0.8	2.4	3.19	6.5	6.6	3.4	2.1	1.14	1.14	0.48	
011JE01179	VICEROY	197	652	1594	63	81	4.1	1.3	3.11			2.6	5.0	0.80	9.17	-0.01	✓
011JE01330	AltaLEMOR {3}	158	477	1166	35	36	5.2	2.2	2.79			3.7	4.6	1.50	23.88	1.07	✓
011JE01326	AltaCHIVE	156	470	1383	54	48	3.4	-0.4	3.09			1.1	3.2	1.70	23.61	0.16	✓
011JE01329	AltaWISHBONE {4}	150	493	1593	64	65	2.5	-2.1	2.94			-1.9	-1.3	1.20	12.19	0.14	✓
011JE01207	CHEKELO	141	458	651	35	50	5.0	-0.8	2.79			0.3	2.8	1.40	11.13	0.09	
011JE01309	WILLOW	120	391	1049	39	52	2.3	-1.8	2.97			-2.2	0.2	2.10	26.41	0.41	
011JE01294	VALERGO-PP	118	409	783	40	59	2.6	-3.2	3.19			-3.5	-1.1	2.20	27.44	0.24	
011JE01140	LADD	63	194	-550	-6	26	2.1	-0.9	2.94			-0.6	1.6	2.60	34.86	1.24	✓
011JE00968	APPLEJACK	16	8	-302	1	7	-1.4	2.1	3.34			2.9	2.1	1.50	17.35	0.49	✓

THE BEEF ADVANTAGE

CUSTOMIZE YOUR GENETIC PLAN
TO USE BEEF ON DAIRY



**MAXIMUM
GENETIC
PROGRESS**



**HERD
INVENTORY
PLANNING**



**HIGH
FERTILITY**



**CALVING
EASE**

S A V Ten Percent 3085



CML Notorious 617D



Remital Sleep Easy 68U



All breeds available.

Fertility ▲ Fertility ▲ Fertility



AltaHELICON

NEW

\$14 +gst

PEAK AltaHELICON-ET

AltaSPRING x Hill x Man-0-Man

NASIS Code:011H011706 | Herdbook: NLDM000751487334



TPI 2589 | NM\$ 742 | Type 1.96 | UDC 2.63 | FLC 0.87 | **PL 5.4** | **DPR +2.1**
M 1193 lbs | P 46 lbs +.03% | F 72 lbs +.10% | Calving Ease 7.3% 679 Obs



AltaFANTASTIC

\$14 +gst

PEAK AltaFANTASTIC-ET

Supershot x McCutchen x Planet

NASIS Code:011H011905 | Herdbook: USAM003132426481



TPI 2565 | NM\$ 728 | Type 1.46 | UDC 1.31 | FLC 0.61 | **PL 5.6** | **DPR +2.1**
M 1618 lbs | P 63 lbs +.05% | F 60 lbs +.00% | Calving Ease 7.2% 116 Obs



AltaWORMONT

\$14 +gst

Melarry AltaWORMONT-ET

Supershot x Shan x Snowman

NASIS Code:011H011666 | Herdbook: USA003128713944



TPI 2547 | NM\$ 766 | Type 0.73 | UDC 1.15 | FLC 0.98 | **PL 6.1** | **DPR +2.5**
M 1309 lbs | P 52 lbs +.04% | F 66 lbs +.06% | Calving Ease 5.0% 1932 Obs



AltaFIREUP **NEW**

\$14 +gst

No-Fla AltaFIREUP

Fuelup x Mogul x Planet

NASIS Code:011H011650 | Herdbook: USA000073752884



TPI 2483 | NM\$ 730 | Type 1.30 | UDC 2.05 | FLC 0.84 | **PL 5.5** | **DPR +1.4**
M 752 lbs | P 28 lbs +.02% | F 76 lbs +.17% | Calving Ease 6.8% 4638 Obs



AltaLAUTALOVE **NEW**

\$14 +gst

PEAK AltaLAUTALOVE-ET

Supershot x Munition x Snowman

NASIS Code:011H011849 | Herdbook: USAM003133371220



TPI 2465 | NM\$ 697 | Type 0.88 | UDC 0.83 | FLC 0.74 | **PL 4.6** | **DPR +1.2**
M 1923 lbs | P 63 lbs +.02% | F 68 lbs -.01% | Calving Ease 6.3% 167 Obs



Alta1STLOOK

\$14 +gst

Bryhill Alta1STLOOK

Alta1STCLASS x Supersire x Planet

NASIS Code:011H011704 | Herdbook: CANM000109195632



TPI 2407 | NM\$ 686 | Type 1.22 | UDC 1.55 | FLC 0.27 | **PL 4.9** | **DPR +1.0**
M 106 lbs | P 28 lbs +.09% | F 81 lbs +.28% | Calving Ease 6.3% 1176 Obs



AltaPIPELINE {3} **NEW** \$24+gst | \$55 sexed+gst

JX Faria Brothers AltaPIPELINE {3}

NASIS Code:011JE01358 | Herdbook: USAM003140371467



JPI 174 | CM\$ 563 | Type 1.3 | JUL 12.18 | PL 3.7 | DPR +1.0
M 1475 lbs | P 53 lbs .00% | F 63 lbs -.03%



AltaWISHBONE {4} **NEW**

JX Grazeland PT AltaWISHBONE {4}

JX Leone1 {3} x Plus {5} x Q Impuls

NASIS Code:011JE01329 | Herdbook: USA000067771271



JPI 150 | CM\$ 520 | Type 1.2 | JUL 12.19 | PL 2.5 | DPR -2.1
M 1593 lbs | P 64 lbs +.03% | F 65 lbs -.05%

\$18 +gst



AltaRAZZLES {3}

JX Steinhauers AltaRAZZLES {3}-ET

JX Marlo {2} x Plus {5} x Hallmark

NASIS Code:011JE01327 | Herdbook: USA000119723694



JPI 145 | CM\$ 476 | Type 2.2 | JUL 21.39 | PL 3.2 | DPR +1.4
M 915 lbs | P 38 lbs +.02% | F 49 lbs +.03%

\$24 +gst | \$55 sexed +gst



CHEKELO

Valsigna Marvel Chekelo

Marvel x Karbala x Tbone

NASIS Code:011JE01207 | Herdbook: USA000118506982



JPI 141 | CM\$ 487 | Type 1.4 | JUL 11.13 | PL 5.0 | DPR -0.8
M 651 lbs | P 35 lbs +.06% | F 50 lbs +.09%

\$18 +gst



WILLOW

Ahlem Snapdragon Willow

Snapdragon x Plus {5} x Region

NASIS Code:011JE01309 | Herdbook: USAM000067823040



JPI 120 | CM\$ 404 | Type 2.1 | JUL 26.41 | PL 2.3 | DPR -1.8
M 1049 lbs | P 39 lbs +.01% | F 52 lbs +.01%

\$24 +gst



VALERGO-PP

All Lynns Nikon Valergo-PP

Nikon-P x Critic-P x Paramount

NASIS Code:011JE01294 | Herdbook: USA000119288203



JPI 118 | CM\$ 432 | Type 2.2 | JUL 27.44 | PL 2.6 | DPR -3.2
M 783 lbs | P 40 lbs +.06% | F 59 lbs +.11%

\$22 +gst

VICEROY

011JE01179

CDF VICEROY-ET
DOMINICAN X Q IMPULS
JE840M003002447507 | DOB 6/20/2012

JH1F JH2F \$35 +gst | \$55 sexed +gst

CDCB & AJCA Genetic Evaluations 08/2018



CONFORMATION

PTAT	0.8	JUI	9.17
Rel	97%		

PRODUCTION (705 Daughters in 61 Herds)

Milk	1594 Lbs	Rel	98%
Protein	63 Lbs	+0.03%	NM\$ \$ 652
Fat	81 Lbs	+0.02%	

HEALTH

PL	4.1	DPR	1.3
LIV	+0.4	CCR	2.6
SCS	3.11	HCR	5.0



- ▲ #1 daughter proven JPI sire (fully registered) 197 JPI
- ▲ Robust Dairy Frames
- ▲ Extreme Yields with improved female fertility

JPI 197

CM\$ 675

CONFORMATION (Based on 326 Daughters in 37 Herds)

	-2	-1	0	1	2		
Stature						+0.7	Tall
Strength						+1.0	Strong
Dairy form						+0.3	Open
Rump Angle						+0.7	Sloped
Thurl Width						+0.9	Wide
R. Legs-S View						+0.5	Sickle
Foot Angle						+0.1	Steep
F. Udder Att.						+1.6	Strong
R. Udder Ht.						+0.6	High
R. Udder Wid.						+0.2	Wide
Udder Cleft						0.0	Weak
Udder Depth						+0.7	Shallow
F. Teat Place						+0.3	Close
RTP - Side View						-0.4	Wide
RTP - Rear View						+1.1	Close
Teat Length						+0.3	Long

ALTAZIZIC {4}

011JE01348

NEW

JX FARIA BROTHERS ALTAZIZIC {4}
RONALDO {3} X MAGNUM
JE840M003140371297 | DOB 1/17/2017

JH1F JH2F \$28 +gst | \$55 sexed +gst

CDCB & AJCA Genetic Evaluations 08/2018



CONFORMATION

PTAT	1.0	JUI	8.95
Rel	73%		

PRODUCTION (0 Daughters in 0 Herds)

Milk	1511 Lbs	Rel	75%
Protein	67 Lbs	+0.06%	NM\$ \$ 696
Fat	97 Lbs	+0.12%	

HEALTH

PL	2.9	DPR	-0.1
LIV	-0.6	CCR	-0.5
SCS	2.74	HCR	



- ▲ Extreme ranking JPI sire 214 JPI
- ▲ Extreme yields +164 CFP
- ▲ A "No Holes" linear breakdown

JPI 214

CM\$ 736

CONFORMATION (Based on 0 Daughters in 0 Herds)

	-2	-1	0	1	2		
Stature						+1.3	Tall
Strength						+1.0	Strong
Dairy form						+0.5	Open
Rump Angle						+0.4	Sloped
Thurl Width						+0.6	Wide
R. Legs-S View						-0.2	Posty
Foot Angle						+0.3	Steep
F. Udder Att.						+1.5	Strong
R. Udder Ht.						+0.6	High
R. Udder Wid.						+0.3	Wide
Udder Cleft						+0.3	Strong
Udder Depth						+0.8	Shallow
F. Teat Place						+0.2	Close
RTP - Side View						-0.4	Wide
RTP - Rear View						+0.9	Close
Teat Length						+1.2	Long

Alta Australia Pty.

Head Office Melbourne

03 8312 3440

Email: info.au@altagenetics.com

Australia Sales Representatives

Tony Simpson

North VIC/NSW/WA

0427 341 458

tony.simpson@altagenetics.com



Giles Gay

QLD/North NSW

0429 839 292



Brett Hazelman

North VIC

0459 600 658

brett.hazelman@altagenetics.com



Stuart Bright

Tasmania

0438 777 411

stuart.bright@altagenetics.com



Jake Harkness

Western VIC/SA/Tablelands

0448 634 533

jake.harkness@altagenetics.com



Peter Clifford

Western VIC/SA

0428 416 444

peter.clifford@altagenetics.com



Geoff Watts

Gippsland

0458 604 102

geoffrey.watts@altagenetics.com



Kahli Higgins

Gippsland

0427 544 758

kahli.higgins@altagenetics.com



 **/AltaGeneticsAustralia**
australia.altagenetics.com

Office Staff

Julian Pick; Sales Support

0428 529 275

julian.pick@altagenetics.com

Jayde Lee; Marketing & Operations

0419 677 209

jayde.lee@altagenetics.com

General Manager

Robin Dunki Jacobs

0447 677 658

robin.dunkijacobs@altagenetics.com

