

# 2019 BEEF SIRE CATALOGUE

ANGUS | HEREFORD | CHAROLAIS  
SIMMENTAL | WAGYU | BRANGUS



# BREEDING BETTER AUSTRALIAN HERDS

The team at Genetics Australia are proud to present our beef sire catalogue for 2019/20. We continue to offer the Australia beef industry a diverse team of beef sires with high quality sires represented all through the catalogue.

In 2019 we have added a number of new sires sourced from Australia and the USA, these young sires represent some of the highest calibre genetics available to beef breeders around the world, whether you are seeking a sire with exceptional maternal traits, calving ease or high carcass merit, Genetics Australia has a sire to meet your requirements.

Our beef team has continued to expand with the inclusion of a new team of Australian bred Poll Hereford, Simmental and Speckle Park sires to meet the demand of not only Australian beef producers but also the demands of our growing list of international customers seeking Australian beef genetics.

We continue to see demand for both male and female sexed semen increase, to meet this demand we endeavour to source sexed semen from our elite sires of both male and female gender. It is exciting to see the amount of research and development taking place to constantly

improve sexed semen. Massive advancements continue not only on the processing of sexed semen but also the continued research on protocols for synchronisation programs to assist you to achieve the highest results possible and improve your return on investment. If you would like further information on the current sexed semen protocols please contact Nigel Semmens.

For our Angus customers we have released new Horizon Young Sires in 2019. A limited amount of semen is available from these for sires at \$15 per straw, please refer to the Horizon Young Sire section on the price list you would have received with this directory to order or contact Genetics Australia for more information.

Please feel free to contact myself or any of our sales team listed on the back of this directory for further information.

Regards,

**Nigel Semmens**  
Beef Sales Manager

[www.facebook.com/  
GeneticsAustraliaBeef](https://www.facebook.com/GeneticsAustraliaBeef)



## INDEX OF SIRES

### ANGUS

CODE	NAME	PAGE
7AN454	ACC Bourbon 0115	31
BARTELE7	Ayrvale Bartel E7	18
STEWIE D19	Cherylton Stewie D19	35
7AN351	Connealy Capitalist 028	22
203AN01463	Connealy Commonwealth	29
203AN01462	Connealy Rampart	14
7AN379	Deer Valley All In	32
7AN440	Deer Valley Old Hickory	32
7AN418	Deer Valley Patriot	22
203AN01435	Ellingson Accelerate 5264	10
7AN425	EWA High Weigh 3123	25
7AN510	EWA Peyton 642	3
14AN541	GAR Bonfire	8
7AN542	GAR Combustion	8
551AN01472	GAR Drive	6
7AN441	GAR Method	34
7AN392	GAR Momentum	6
7AN483	GAR Phoenix	5
7AN422	GAR Prophecy	16
7AN320	GAR Prophet	16
7AN442	GAR Relevance	33
551AN1517	GAR Reliant	4
7AN389	GAR Sure Fire	4
SJJK26	Granite Ridge Kaiser K26	24
14AN461	Jindra Acclaim	25
7AN394	JMB Traction 292	30
NKLF84	Kansas Aberdeen F84	35
MOJOM45	Landfall Mojo M45	18
INCREDIBLEH803	Lawsons Incredible H803	33
LEOL488	Lawsons Leo L483	34
LINKEDINL483	Lawsons LinkedIn L488	34
MOMENTOUSM518	Lawsons Momentous M518	7
PROSPERITYH382	Lawsons Prosperity H382	33
551AN01468	LT Enterprise 5213	23
LAKESIDE L69	Millah Murrah Lakeside L69	12

### ANGUS

NECTARN334	Millah Murrah Nectar N334	12
551AN01549	Musgrave 316 Exclusive	13
203AN01465	Musgrave Apache 1516	10
551AN01477	QHF WWA Black Onyx 5Q11	26
AA1369	Quaker Hill Dead Center	24
NORK522	Rennylea Kodak K522	9
551AN01470	S Foundation 514	14
551AN01469	S Powerpoint WS 5503	15
551AN01485	SAV Raindance 6848	19
203AN01457	Sitz Response 405C	31
7AN388	SS Niagara Z29	11
VISIONARY	TCA Visionary 158	30
7AN463	Tex Playbook 5437	29
LEAD EDGEL292	Topbos Leading EDGE L292	17
14AN422	VAR Discovery 2240	27
14AN439	VAR Index 3282	27
55AN01476	VAR Legend 5019	28
PATROL P29	Warrawee Patrol P29	21
7AN476	Worthington All Profit	21

### SOUTH DEVON

COOLBEAU	Davelle Cool Beau N51	39
----------	-----------------------	----

### RED ANGUS

551AR01515	Pelton Wideload	38
------------	-----------------	----

### HEREFORD

7HP114	Efbeef X651 Tested A250	42
551HH01704	H FHF Advance 628 ET	42
LIONHEART	Hunter Lakes Lion Heart L110	41
REDFORD J084	Injemira Redford J084	41
551HP01609	KCF Bennett Encore Z311	40
203HP01605	KCF Bennett Homeland C34	40

### CHAROLAIS

GDFIRST	1GD First	45
GDISIDOR	1GD Isidor PP	45
GDISMAEL	1GD Ismael PP	45
HARVEYH338	Paringa Harvey H338	44
551CH01502	WR Foreman	44

### SPECKLE PARK

CALVEEASYJ16	Blue Spark Calve Easy J16 P	47
STORMP33	The Points Storm P3	47

### MURRAY GREY

GENESIS G141	Cadfor Genesis G141	43
--------------	---------------------	----

### WAGYU

151KB00002	CHR Hirashige Tayasu 533	48
151KB00004	Chr Shigesigetani 542	48
KKDM105	Kuro Kim DM 100/5	48

### SIMMENTAL

NAPLES	Woonallee Naples N78	46
SYLTYSON	Sylvandale Tyson	46
JERRY	Wilandra Jerry J044	46

### BRANGUS

203BN01362	MC Something Special 889Y2	49
551BN01507	T3 Broadway 30E	49

#### For all products and sales enquires contact:

Nigel Semmens – Beef Products Manager  
Mobile: 0439417941  
Office: 1800 039 047  
Skype: nsemmens  
Email: [nsemmens@genaust.com.au](mailto:nsemmens@genaust.com.au)

#### Orders, accounts and dispatch enquiries please contact our office:

Ph: 1800 039 047  
Email: [orders@genaust.com.au](mailto:orders@genaust.com.au)  
Postal Address: P.O Box 195  
Bacchus Marsh, Vic 3340  
[www.genaust.com.au](http://www.genaust.com.au)



EWA

**PEYTON** 642**NEW**Tattoo: 642 Born 9/7/2016 **Bull code: 7AN510**

- New exciting genomic standout sire now available in Australia.
- This genomic champion ranks in the top 1 percent for an astounding 9 traits and indexes.
- Built from a lineage of breed leaders, Peyton's genetic offering will truly improve cattle.
- Pushes the envelope for growth and carcase merit, his sire Manning is a full brother to our popular sire Quaker Hill Dead Center.

Sire: Quaker Hill Manning 4EX9



<b>Sire</b>	EXAR Denver 2002B <b>Quaker Hill Manning 4EX9</b> Quaker Hill Blackcap oA32
<b>Dam</b>	GAR Progress <b>E W A 444 of 968 Progress</b> Edgewood Lady 968
<b>Actual BW</b>	39 Kg
<b>Weaning Wt.</b>	378 Kg
<b>Yearling Wt.</b>	658 Kg
<b>Yearling SC</b>	37 cm
<b>Frame</b>	6.1 Yearling
<b>Aust. Reg. No.</b>	USA18675107

2019 Mid July Angus Breedplan																						
Trait	CE Dir	CE Dtrs	GL	BWT	200	400	600	MCW	Milk	DTC	SS	DOC	CWT	EMA	RIB	P8	RBY	IMF	ABI	DOM	GRN	GRS
EBV	1.5	1.2	-3.5	5.7	79	140	171	137	20	-3.9	1.4	-	106	6.7	-0.5	-2.6	0.5	3.1	\$171	\$155	\$196	\$161
(Acc)	49%	33%	65%	76%	75%	74%	72%	69%	69%	35%	68%	-	71%	67%	68%	60%	62%	65%				
Perc	33	38	60	82	1	1	1	1	12	58	70	-	1	24	65	9%	50	8	1	1	1	1

NEW

GAR  
RELIANT

STgenetics®



Tattoo: R676 Born 19/8/2016

Bull code: 551AN1517

Sire	Connealy Insure 8524 <b>GAR Sure Fire</b> Chair Rock 5050 GAR 8086
Dam	B/R Destination 727-928 <b>GAR Destination N244</b> GAR Predestined 3279
Actual BW	33 Kg
Weaning Wt.	235 Kg
Yearling Wt.	515 Kg
Yearling SC	36.7 cm
Frame	6.0 Yearling
Aust. Reg. No.	USA18669357

- Reliant is a new addition to the Genetics Australia team in 2019.
- As one of the top selling bulls in the 2018 GAR spring sale, Reliant was identified for his superior performance with impressive phenotype.
- Reliant has a very unique maternal pedigree blending Destination 928 with Predestined, and other proven carcass legends.
- With every \$Value index in the top 5% or better, Reliant is a shining star in the Angus population.
- Reliant offers top 1% EPD's for docility, heifer pregnancy and marbling.

## 2019 June Angus USA Sire Summary

Trait	CED	BW	WW	YW	RADG	DMI	YH	SC	DOC	Claw	Angle	HP	CEM	MILK	MW	MH	SEN	CW	MARB	RE	FAT	SM	SW	SB
EPD	7	1.9	73	136	0.3	1.18	0.9	1.14	38	0.59	0.55	17.9	6	38	63	0.5	-27	66	1.36	0.98	-0.007	81	89	212
ACC	0.32	0.45	0.39	0.35	0.31	0.31	0.5	0.47	0.44	0.23	0.23	0.24	0.3	0.3	0.35	0.38		0.41	0.37	0.38	0.35			
% Rank	45	65	5	3	2	95	15	25	1	85	75	1	75	2	20	35	95	3	1	5	30	10	2	1

GAR  
SURE FIRE

Tattoo: K62 Born: 5/2/2012

Bull code: 7AN389

Sire	Mytty In Focus <b>Connealy In Sure 8524</b> Entreena of Conanga 657
Dam	GAR New Design 5050 <b>Chair Rock 5050 GAR 8086</b> Chair Rock Grid Maker 2107
Actual BW	38 Kg
Weaning Wt.	325 Kg
Yearling Wt.	550 Kg
Yearling SC	40 cm
Frame	6.6 Yearling
Aust. Reg. No.	USA17328461



- Sure Fire is a proven option for the improvement of calving ease, a trait always in demand.
- A proven foot improver with positive EBV's for Front and Rear Foot Angle and Front Claw EBV's.
- Progeny are eye-catching, sound, mid-sized for frame and exhibit ample shape.
- A proven sire of sons, GAR Sure Fire transmits his excellent calving ease and carcass qualities to his progeny.

## 2019 Mid July Angus Breedplan

Trait	CE Dir	CE Dtrs	GL	BWT	200	400	600	MCW	Milk	DTC	SS	DOC	CWT	EMA	RIB	P8	RBY	IMF	ABI	DOM	GRN	GRS
EBV	3.4	5.7	-4.2	1.8	49	90	107	87	15	-9.2	3.8	9	69	8.9	0	-0.3	1.5	2.7				
(Acc)	88%	75%	99%	98%	98%	98%	98%	92%	93%	56%	97%	92%	89%	89%	89%	86%	83%	87%	\$156	\$142	\$176	\$143
Perc	9	1	45	6	27	22	48	58	52	1	1	33	20	5	50	55	12	15	1	1	2	1





USA18636106 Tattoo: 6146 Born 15/8/2016 Bull code: 7AN483



Sire: GAR Sure Fire

Sire	Connealy Insure <b>GAR Sure Fire</b> Chair Rock 5050 G A R 8086
Dam	GAR Prophet <b>GAR Prophet N744</b> GAR Daybreak 440
Actual BW	32 kg
Weaning Wt.	343 kg
Yearling Wt.	626 kg
Yearling SC	43 cm
Frame	6.8 Yearling
Aust. Reg. No.	USA18636106

- GAR Phoenix has created huge demand in Australia. Breeders looking to accelerate genetics gain realise the benefit of using a high indexing sire such as GAR Phoenix.
- Offering genetics for growth and carcase merit like few can.

- Top 10 percent ranking for 15 individual EBVs/Indexes puts PHOENIX in rare company.
- GAR Phoenix posts incredible projections for a long list of traits while displaying an eye-pleasing phenotype.

2019 Mid July Angus Breedplan																						
Trait	CE Dir	CE Dtrs	GL	BWT	200	400	600	MCW	Milk	DTC	SS	DOC	CWT	EMA	RIB	P8	RBY	IMF	ABI	DOM	GRN	GRS
EBV	3.5	3.9	-2.1	4.7	72	126	156	130	17	-8.4	3.5	-	96	10.4	-0.4	-1.3	1.5	3.2	\$192	\$165	\$223	\$175
(Acc)	54%	53%	72%	80%	79%	79%	77%	75%	75%	41%	75%	-	75%	73%	74%	67%	68%	71%				
Perc	8	3	83	60	1	1	1	3	33	2	2	-	1	2	63	80	12	7	1	1	1	1

# GAR MOMENTUM



Tattoo: 7372 Born: 31/8/2012

**Bull code: 7AN392**

<b>Sire</b>	GAR Predestined <b>GAR Progress</b> GAR Objective 2345
<b>Dam</b>	ALC Big Eye D09N <b>GAR Big Eye 1770</b> GAR Objective 3387
<b>Actual BW</b>	31 Kg
<b>Weaning Wt.</b>	272 Kg
<b>Yearling Wt.</b>	525 Kg
<b>Yearling SC</b>	39 cm
<b>Frame</b>	5.3
<b>Aust. Reg. No.</b>	USA17354145

- GAR Momentum is the "Carcase King" of the Angus breed globally, the elite of the elite when it comes to carcase sires.
- Progeny have impressive phenotype and outstanding carcase merit.
- No other sires can match Momentum in Australia with his combination of EMA (+13.1) and %IMF (+4.8).
- Logical choice as a breed improving carcase sire, with such prolific use globally Momentum will leave a legacy of high carcase merit descendants that will continue to improve carcase quality and your profitability for many generations.

## 2019 Mid July Angus Breedplan

Trait	CE Dir	CE Dtrs	GL	BWT	200	400	600	MCW	Milk	DTC	SS	DOC	CWT	EMA	RIB	P8	RBY	IMF	ABI	DOM	GRN	GRS
EBV	0.9	0.5	-3	2.7	47	87	97	64	22	-0.8	0.0	19	68	13.1	-0.5	-2.1	0.6	4.8	\$128	\$127	\$152	\$118
(Acc)	89%	79%	99%	98%	98%	97%	97%	95%	92%	56%	96%	89%	89%	89%	89%	86%	84%	87%				
Perc	42	50	68	15	38	31	71	92	5	94	98	10	23	1	65	92	45	1	25	6	13	35

# GAR DRIVE



Tattoo: J5102 Born: 4/1/2015

**Bull code: 551AN1472**

<b>Sire</b>	GAR Progress <b>GAR Momentum</b> GAR Big Eye 1770
<b>Dam</b>	Connealy Insure 8524 <b>Maplecrest Blackcap 3007</b> Maplecrest Blackcap K9283
<b>Actual BW</b>	36 kg
<b>Weaning Wt.</b>	413 kg
<b>Yearling Wt.</b>	601 kg
<b>Yearling SC</b>	37.5 cm
<b>Frame</b>	5.7 Yearling
<b>Aust. Reg. No.</b>	USA18301470

- Drive is a rare individual that offers stylish phenotype combined with high carcase merit.
- One of only 2 bulls in the USA that offer Marb greater than +1.6 and REA of +1.0, the other bull is his sire GAR Momentum.
- Study the pedigree of this uniquely bred GAR sire which includes high profile sires known for feminine daughters and docility - TC Total and Leachman Right Time.
- Drive ranks in the top 1% for marbling (+1.67) and ribeye (+1.01) EPDs in the USA and in Australia Drive records +12 EMA and +3.3 %IMF EBVs.

## 2019 Mid July Angus Breedplan

Trait	CE Dir	CE Dtrs	GL	BWT	200	400	600	MCW	Milk	DTC	SS	DOC	CWT	EMA	RIB	P8	RBY	IMF	ABI	DOM	GRN	GRS
EBV	3	2.7	-3	2.6	47	86	96	77	23	-1.9	1.1	-	66	12	-0.7	-1.1	1.3	3.3	\$123	\$127	\$136	\$118
(Acc)	65%	50%	84%	84%	79%	78%	77%	75%	73%	41%	74%	-	75%	72%	73%	66%	67%	70%				
Perc	13	13	68	14	38	34	73	77	3	87	80	-	29	1	73	75	15	5	33	6	28	35





Tattoo: M518 Born 30/6/2016 **Bull code: MOMENTOUSM518** Owned by: Lawsons Angus, Blue River Grazing, Collins Bros and AJ and WJ Ryan

Sire: GAR Momentum



<b>Sire</b>	GAR Progress <b>GAR Momentum</b> GAR Big Eye 1770
<b>Dam</b>	Te Mania Africa A217 <b>Lawsons Africa H229</b> Lawsons Rockn D Ambush E1103
<b>Actual BW</b>	38 kg
<b>Weaning Wt.</b>	289 kg
<b>Yearling Wt.</b>	596 kg
<b>Yearling SC</b>	43 cm
<b>Frame</b>	6 Yearling
<b>Aust. Reg. No.</b>	VLYM518

- The high selling bull in Lawsons Angus WA sale and all-time high selling Angus bull sold at Auction in Western Australia.
- Top 1% EMA and %IMF EBV's and top 3% for all Indexes.
- Best described as sound footed, deep bodied, slick coated, docile and hard to fault sire.
- Male and female Sexed Semen now available.

- Initial progeny reports for Momentous have commented his calves are born easy, look stylish and grow quickly.
- Momentous rates as one of the leading Momentum sons available in the Angus breed globally.
- Rated as one of the most complete sires bred by Lawsons Angus long history in the Angus breed.
- Momentous is an eye-catching sire with figures that rank him as an elite young sire in the Angus breed.

2019 Mid July Angus Breedplan																						
Trait	CE Dir	CE Dtrs	GL	BWT	200	400	600	MCW	Milk	DTC	SS	DOC	CWT	EMA	RIB	P8	RBV	IMF	ABI	DOM	GRN	GRS
EBV	0.8	1.8	-4.7	4	53	98	124	103	23	-3.8	2.6	-	68	11.7	-0.3	-1.1	0.5	4.5	\$154	\$134	\$185	\$139
(Acc)	70%	53%	97%	93%	78%	74%	76%	75%	65%	44%	68%	-	68%	64%	67%	64%	60%	63%				
Perc	43	27	37	43	11	7	13	25	3	60	15	-	23	1	60	75	50	1	2	1	1	3

# GAR COMBUSTION

NEW



Tattoo: 5897 Born 23/8/2017

Bull code: 7AN542

Sire	Connealy Insure 8524 <b>GAR Sure Fire</b> Chair Rock 5050 GAR 8086
Dam	GAR Momentum <b>GAR Momentum 1724</b> GAR 28 Ambush M91
Actual BW	37 Kg
Weaning Wt.	384 Kg
Yearling Wt.	573 Kg
Yearling SC	37 cm
Frame	6.9 Yearling
Aust. Reg. No.	USA18943322

- Featured as the lot 1 bull in the spring 2019 Gardiner Angus Ranch Sale
- Combustions pedigree combines two of the best calving Ease and carcass bulls in the business, SURE FIRE and MOMENTUM.
- Check out his Marbling EPD! If you want to change marbling in your cattle, genetics like this will change them.
- Big-time growth projections and big-time end-product projections make Combustion are high demand sire.

## 2019 June Angus USA Sire Summary

Trait	CED	BW	WW	YW	RADG	DMI	YH	SC	DOC	Claw	Angle	HP	CEM	MILK	MW	MH	SEN	CW	MARB	RE	FAT	SM	SW	SB
EPD	11	1.9	75	137	0.32	0.7	0.9	1.57	29	0.62	0.43	8.4	8	30	63	0.8	-23	59	1.61	0.79	-0.001	62	83	219
ACC	0.35	0.49	0.43	0.38	0.34	0.34	0.52	0.49	0.46	0.26	0.26	0.27	0.32	0.32	0.38	0.41		0.44	0.40	0.40	0.38			
% Rank	15	65	5	3	1	80	10	10	4	95	15	80	55	20	15	10	95	10	1	15	35	45	4	1

# GAR BONFIRE

NEW

Accelerated Genetics



Tattoo: K137 Born 14/2/2017

Bull code: 14AN541

Sire	Connealy Insure 8524 <b>GAR Sure Fire</b> Chair Rock 5050 GAR 8086
Dam	GAR Prophet <b>Chair Rock Prophet 3054</b> Chair Rock 5050 GAR 1131
Actual BW	42 Kg
Weaning Wt.	361 Kg
Yearling Wt.	777 Kg
Yearling SC	41 cm
Frame	7.0 Yearling
Aust. Reg. No.	USA18789776

- If you're serious about improving carcass merit, look no further than GAR Bonfire.
- BONFIRE's pedigree is a who's who of bulls that have made their mark on carcass quality in Australia.
- GAR Sure Fire x GAR Prophet X GAR New Design 5050.
- A young sire who is deep bodied, has a heap of rib and a docile nature.
- Your future depends on decisions you make today. Here's a tip: use BONFIRE!

## 2019 June Angus USA Sire Summary

Trait	CED	BW	WW	YW	RADG	DMI	YH	SC	DOC	Claw	Angle	HP	CEM	MILK	MW	MH	SEN	CW	MARB	RE	FAT	SM	SW	SB
EPD	11	1.1	82	149	0.26	2.04	1.2	1.47	29	0.52	0.5	12.9	11	32	52	8	-18	65	1.31	0.67	0.02	86	97	171
ACC	0.34	0.48	0.42	0.38	0.34	0.34	0.51	0.49	0.37	0.26	0.26	0.25	0.32	0.32	0.37	0.4		0.42	0.39	0.39	0.37			
% Rank	15	45	1	1	15	95	2	15	4	55	45	30	25	10	30	15	90	4	2	30	65	3	1	5





Reg: NORK522 Tattoo: K522 Born: 11/8/2014 **Bull code: NORK522** Owned by: Hardhat Angus, NSW

Son: Hardhat K522 Native J11 N125



<b>Sire</b>	Booroomooka Undertaken Y145 <b>Rennylea Edmund E11</b> Lawsons Henry VIII Y5
<b>Dam</b>	Te Mania Berkley B1 <b>Rennylea Eisa Erica F810</b> Rennylea Eisa Erica C299
<b>Actual BW</b>	33 Kg
<b>Mature Wt.</b>	1079 Kg
<b>Yearling SC</b>	40 cm
<b>Frame</b>	6.0
<b>Aust. Reg. No.</b>	NORK522

- The breed's elite proven calving ease sire, +5.0 CE Direct and +3.7 CE Daughters combined with -6.9 GL and +1.5 BW EBVs make Kodak your first-choice heifer sire.
- Kodak has quickly earned himself a reputation as Mr Fixit. If you need to fix up your calving ease, BW, Scrotal, Feet & Legs and %IMF, Kodak is your first choice.

- Progeny are born easy, look stylish and have ample growth.
- Kodak ranks in the top 10% of the breed for 11 individual EBVs/Indexes.
- Structurally sound, free moving athletic sire, with excellent structural EBVs.

2019 Mid July Angus Breedplan																						
Trait	CE Dir	CE Dtrs	GL	BWT	200	400	600	MCW	Milk	DTC	SS	DOC	CWT	EMA	RIB	P8	RBV	IMF	ABI	DOM	GRN	GRS
EBV	5	3.5	-6.7	1.5	46	88	113	114	14	-11	4.5	-8	68	2.9	3.1	0.9	-1	4	\$155	\$127	\$187	\$135
(Acc)	78%	61%	99%	98%	96%	95%	94%	83%	72%	60%	93%	93%	79%	82%	83%	81%	77%	80%				
Perc	1	5	12	4	43	28	33	11	61	1	1	87	23	84	1	20	95	1	1	6	1	5



# Musgrave APACHE 1516



Tattoo: A1516 Born: 4/4/2015

Bull code: 203AN1465

Sire	Koupals B&B Identity <b>Musgrave Aviator</b> MCTAL Forever Lady 1429-138
Dam	Musgrave Boulder <b>Musgrave Caroline 1304-189</b> MCTAL Lady Caroline 189-1615
Actual BW	34 kg
Weaning Wt.	366 kg
Yearling Wt.	678 kg
Yearling SC	39.6 cm
Frame	5.9 Yearling
Aust. Reg. No.	USA18194405

- Apache sons were the standout sire group in the March 2019 Musgrave Angus sale, averaging \$9,829 USD.
- Apache was the most outstanding sire inspected on recent USA beef tours, flawless structure and eye appealing phenotype.
- Musgrave Angus number one choice for an Aviator son, Apache was used extensively in their breeding program.
- As their lot 1 bull, Musgrave Angus described Apache as: "... a unique blend of style, structure, durability and muscle. One of the best from Aviators to date."

## 2019 Mid July Angus Breedplan

Trait	CE Dir	CE Dtrs	GL	BWT	200	400	600	MCW	Milk	DTC	SS	DOC	CWT	EMA	RIB	P8	RBY	IMF	ABI	DOM	GRN	GRS
EBV	1.9	1.4	-3.2	1.5	51	91	106	58	22	-5.5	1.9	-19	69	7.2	1.2	0.6	0.7	1.6	\$124	\$126	\$120	\$125
(Acc)	67%	38%	97%	95%	91%	84%	81%	77%	72%	35%	72%	85%	77%	69%	70%	63%	64%	67%				
Perc	27	33	65	4	18	20	50	95	5	27	45	99	20	18	15	28	40	53	32	7	50	18

# Ellingson ACCELERATE 5264



Tattoo: 5264 Born: 21/3/2015

Bull code: 203AN1435

Sire	Koupal Juneau 797 <b>Koupal Advance 28</b> Koupal Ebonette 734
Dam	Ellingson Plateau 1155 <b>EA Emblynnette 3361</b> EA Emblynnette 0068
Actual BW	34 kg
Weaning Wt.	383 kg
Yearling Wt.	5655 kg
Yearling SC	37.8 cm
Frame	5.7 Yearling
Aust. Reg. No.	USA18268046

- An outstanding sire on inspection in 2018, a free moving meat machine with added thickness and muscle.
- Chad Ellingson is using Accelerate in his herd and describes the bull as: "having a soft-made look, extra natural thickness and possessing functional feet and legs".
- Accelerate's progeny were in high demand in recent Ellingson Angus bull sales.
- Accelerate provides the opportunity to use something different from a pedigree standpoint without sacrificing on EBV's or phenotype.

## 2019 Mid July Angus Breedplan

Trait	CE Dir	CE Dtrs	GL	BWT	200	400	600	MCW	Milk	DTC	SS	DOC	CWT	EMA	RIB	P8	RBY	IMF	ABI	DOM	GRN	GRS
EBV	-0.2	-0.3	-4	2.6	59	105	127	84	21	-4.7	1.2	-	67	3.4	0.7	0.6	0.6	0.5	\$117	\$121	\$105	\$123
(Acc)	32%	38%	62%	74%	74%	73%	70%	67%	68%	30%	65%	-	69%	65%	66%	57%	59%	62%				
Perc	60	67	50	14	2	2	10	64	8	42	78	-	26	78	28	28	45	88	45	15	70	23



SS

**NIAGARA** Z29Available in  
**SexedULTRA4M**

ANGUS

Tattoo: Z29 Born: 5/1/2012 **Bull code: 7AN388**

Daughter: CAM Niagra A715



<b>Sire</b>	Sydgen CC & 7 <b>Hoover Dam</b> Erica of Ellston C124
<b>Dam</b>	B/R New Day 454 <b>Jet SS X144</b> Jet SS T151
<b>Actual BW</b>	33 Kg
<b>Weaning Wt.</b>	312 Kg
<b>Yearling Wt.</b>	638 Kg
<b>Yearling SC</b>	36 cm Yearling
<b>Frame</b>	6.0 Yearling
<b>Aust. Reg. No.</b>	USA17287387

- Niagara is your go to sire to breed your next generation of females, his daughters are big-bodied, wide-based and powerful with quality udders.
- Niagara just keeps getting better and better as more progeny are registered in Australia. Excellent calving, low BW, high growth, EMA and docility.

- A standout for feet and leg structure and added muscle.
- His pedigree is constructed with proven, good-uddered cowmaker sires.
- Excellent mating option on Complement, Prophet, Tenx and Capitalist daughters.
- Male and Female Sexed Semen now available.

2019 Mid July Angus Breedplan																						
Trait	CE Dir	CE Dtrs	GL	BWT	200	400	600	MCW	Milk	DTC	SS	DOC	CWT	EMA	RIB	P8	RBV	IMF	ABI	DOM	GRN	GRS
EBV	4.1	1.4	-3.4	2.5	57	109	130	94	20	-2.9	2.0	20	80	10.7	-1.1	-2.3	2.5	1.3	\$142	\$141	\$146	\$141
(Acc)	72%	51%	95%	91%	88%	83%	81%	79%	77%	43%	75%	59%	79%	74%	74%	68%	69%	73%				
Perc	4	33	62	13	4	1	7	43	12	75	40	9	3	1	83	94	1	65	7	1	18	2

NEW

# Millah Murrah NECTAR N334

**Genetics**  
AUSTRALIA


Tattoo: N334 Born 27/8/2017

Bull code: NECTARN334

Bred by: Millah Murrah Angus, Bathurst NSW

Owned by: Heart Angus, Tamworth NSW

Sire	KCF Bennett Performer <b>Coonamble Hector H249</b> Coonamble E9
Dam	Ythanbrae Henry VIII U8 <b>Millah Murrah Prue H113</b> Millah Murrah Prue Y68
Actual BW	41 Kg
Weaning Wt.	550 Kg
Yearling Wt.	742 Kg
Yearling SC	42 cm
Frame	6.0 Yearling
Aust. Reg. No.	NMMN334

- With genuine genetic diversity, a pedigree beyond compare, a balanced and versatile data set, virtually perfect structure and a phenotype to die for, Nectar is the Hector son the breed has been looking for.
- Nectar was the youngest bull of the 2018 Millah Murrah sale that set the \$15,850, 2nd highest sale average ever for the Angus breed. At \$40,000, Nectar was one of five bulls to attain this mark or more, selling to Chris Paterson's Heart Angus Stud.
- With near perfect structure, Nectar achieved straight 5's for feet and leg structure, C+ muscle score, fat score 3, capacity score of 5 and 4 for sheath and navel.

## 2019 Mid July Angus Breedplan

Trait	CE Dir	CE Dtrs	GL	BWT	200	400	600	MCW	Milk	DTC	SS	DOC	CWT	EMA	RIB	P8	RBY	IMF	ABI	DOM	GRN	GRS
EBV	-0.5	-1.2	-7.1	5.7	49	83	110	115	5	-4.6	2.0	25	58	6.6	0	0.6	0.9	2	\$119	\$110	\$128	\$115
(Acc)	57%	55%	74%	75%	73%	72%	72%	68%	62%	46%	74%	61%	67%	66%	68%	66%	63%	65%				
Perc	64	79	9	82	27	45	40	10	99	43	40	4	57	25	50	28	30	35	42	48	39	43

# Millah Murrah LAKESIDE L69

**Genetics**  
AUSTRALIA


Tattoo: L69 Born: 13/2/2015

Bull code: LAKESIDE L69

Bred by: Millah Murrah Angus, Bathurst NSW

Owned by: Kamilaroi Angus, Merriwa NSW

Sire	Sitz Upward 307R <b>Thomas Up River 1614</b> Thomas Carol 7595
Dam	Ythanbrae Henry VIII U8 <b>Millah Murrah Prue H113</b> Millah Murrah Prue C48
Actual BW	39 kg
Weaning Wt.	550 kg
Yearling Wt.	742 kg
Yearling SC	42 cm
Aust. Reg. No.	NMML69

- Lakeside L69 was the \$54,000 2nd high selling bull at the all-breeds-record-average-priced Millah Murrah bull sale in 2016.
- His maternal line is first class. His grand dam C48, had sons sell to \$14,000 and daughters to \$15,000 at Millah Murrah, before selling as a star lot to Coolarmagh Angus in 2013.
- Lakeside's dam is a full sister to Prue H112, the \$54,000 record priced mature Angus cow from Millah Murrah's 2017 cow sale.
- Lakeside's dam is the only dam in the breed to produce three sons that have all sold for \$40,000 or more in Australia.
- Lakeside L69 brings a balanced data set, tremendous maternal strength and superb phenotype to the equation, with widespread joining application for the modern Australian Angus herd.

## 2019 Mid July Angus Breedplan

Trait	CE Dir	CE Dtrs	GL	BWT	200	400	600	MCW	Milk	DTC	SS	DOC	CWT	EMA	RIB	P8	RBY	IMF	ABI	DOM	GRN	GRS
EBV	1.9	0.6	-2.5	3.3	47	89	101	88	23	-6.1	1.4	0	60	4.2	1.3	0.4	-0.6	2.5	\$112	\$114	\$119	\$108
(Acc)	71%	51%	96%	95%	91%	86%	83%	77%	67%	45%	78%	78%	74%	67%	69%	68%	63%	65%				
Perc	27	48	77	27	38	25	62	56	3	18	70	64	50	65	13	33	88	20	57	35	51	63



Musgrave 316  
**EXCLUSIVE**

**NEW**

STgenetics®



Tattoo: 1175 Born 6/2/2015 **Bull code: 551AN01549**



<b>Sire</b>	Connealy Capitalist 028 <b>LD Capitalist 316</b> LD Dixie Erica 2053
<b>Dam</b>	Musgrave Foundation <b>Musgrave Prim Lassie 163-386</b> SCR Prim Lassie 80634
<b>Actual BW</b>	35 Kg
<b>Weaning Wt.</b>	386 Kg
<b>Yearling Wt.</b>	709 Kg
<b>Yearling SC</b>	41.6 cm
<b>Frame</b>	6.2 Yearling
<b>Aust. Reg. No.</b>	USA18130471

- Exclusive was one of the first 316 sons to sell and Musgrave's bought him back to use heavily in their own herd. They have identified him as one of the preeminent 316 sons in the breed.
- His Foundation x Boom Time dam is an outstanding female. The Lassie cow family can be trusted to deliver fleshing ability, fertility and performance.
- 316 has great muscularity, SC, and body shape and offers significantly higher carcase EPD'S than Capitalist.

- 316 is bigger than his sire (frame 6) with great neck extension, mobility, docility and structural soundness of both legs and feet.
- He was a standout sire and favourite of many Australian breeders that have inspected him at Musgrave Angus this past year.

2019 June Angus USA Sire Summary																								
Trait	CED	BW	WW	YW	RADG	DMI	YH	SC	DOC	Claw	Angle	HP	CEM	MILK	MW	MH	\$EN	CW	MARB	RE	FAT	\$M	\$W	\$B
EPD	7	2.3	78	135	0.24	0.96	0.7	1.13	21	0.39	0.46	10.9	11	25	55	0.8	-16	63	0.74	0.71	0.041	78	82	167
ACC	0.37	0.53	0.46	0.41	0.3	0.3	0.44	0.47	0.34	0.2	0.2	0.17	0.28	0.29	0.34	0.37		0.39	0.34	0.34	0.3			
% Rank	45	75	3	4	25	90	25	25	25	5	25	50	25	45	25	10	85	4	25	20	90	10	4	10

NEW

S  
FOUNDATION 514

STgenetics®



Tattoo: 514 Born 19/2/2015

Bull code: 551AN01470

Sire	Vision Topline Royal Stockman <b>Vision Unanimous 1418</b> Vision Edella 665
Dam	S Chisum 6175 <b>S Lady Ann 8384</b> S Lady Ann 6325
Actual BW	41 Kg
Weaning Wt.	367 Kg
Yearling Wt.	639 Kg
Yearling SC	38.1 cm
Frame	6.1 Yearling
Aust. Reg. No.	USA18200213

- Foundation is a sure bet for foot improvement, and his daughters are being described as excellent by many.
- Foundation was the high-selling bull in the 2016 Spickler Ranch sale. Purchased by LT Angus, he was selected for his exceptional feet, scrotal and temperament.
- "The bull is a consistent favourite of visitors at LT Ranch, having a quiet disposition and a powerful stock bull look".
- Foundation can be counted on to improve docility, structure and udder quality, while moderating mature size in most herds.
- His dam has excellent nursing ratios and she has a well-attached udder and good feet.

## 2019 June Angus USA Sire Summary

Trait	CED	BW	WW	YW	RADG	DMI	YH	SC	DOC	Claw	Angle	HP	CEM	MILK	MW	MH	SEN	CW	MARB	RE	FAT	SM	SW	SB
EPD	6	1.5	56	96	0.17	0.55	0.2	1.87	32	0.45	0.48	7	12	17	0	0	15	35	0.63	0.24	0.034	75	53	111
ACC	0.71	0.89	0.86	0.81	0.4	0.4	0.79	0.81	0.73	0.41	0.42	0.25	0.39	0.35	0.44	0.43		0.51	0.45	0.46	0.45			
% Rank	55	55	45	50	80	70	80	3	2	25	35	90	15	90	85	80	10	60	35	85	80	15	55	70

Connealy  
RAMPART

STgenetics®



Tattoo: 5245 Born: 18/1/2015

Bull code: 203AN01462

Sire	Connealy Confidence 0100 <b>Connealy Confidence Plus</b> Elbanna of Conanga 1209
Dam	Hoover Headliner J32 <b>Rubista of Conanga 2304</b> Rubeen of Conanga 9944
Actual BW	31 Kg
Weaning Wt.	350 Kg
Yearling Wt.	620 Kg
Yearling SC	36.5 cm
Frame	6.2
Aust. Reg. No.	USA18227118

- One of the most exciting young sires in our lineup, we believe Rampart holds a world of scope and future with many good things to offer.
- An eye-catching sire that was very impressive when inspected in the USA.
- A phenotype and performance standout of their 2016 sale, Rampart was sampled heavily by the Connealys last spring.
- If you liked Connealy Confidence you will love Connealy Rampart!!

## 2019 Mid July Angus Breedplan

Trait	CE Dir	CE Dtrs	GL	BWT	200	400	600	MCW	Milk	DTC	SS	DOC	CWT	EMA	RIB	P8	RBY	IMF	ABI	DOM	GRN	GRS
EBV	0.1	2.1	-6.2	5.2	62	102	123	99	14	-5.2	0.8	-	71	6.2	-0.6	-1	1.6	0.7	\$124	\$126	\$119	\$126
(Acc)	48%	31%	62%	61%	61%	58%	58%	53%	46%	30%	53%	-	52%	50%	54%	50%	46%	49%				
Perc	55	22	16	73	1	4	15	33	61	32	90	-	15	31	70	73	10	83	32	7	51	17





Tattoo: 5503 Born: 19/2/2015 **Bull code: 551AN01469**

S Powerpoint June 2019



- S Powerpoint offers an outcross pedigree from the renowned Spickler Angus herd, sired by Tehama Revere.
- His Summit x Queen Essa dam is tidy uddered, small teated and well on her way to pathfinder status with her first two calves at 98 for BW, 110 for WW and 110 for YW.

<b>Sire</b>	D R Sierra Cut 74014 <b>Tehama Revere</b> Tehama Elite Blackbird T003
<b>Dam</b>	S Summit 956 <b>S Queen Essa 248</b> S Queen Essa 0131
<b>Actual BW</b>	31 Kg
<b>Weaning Wt.</b>	374 Kg
<b>Yearling Wt.</b>	654 Kg
<b>Yearling SC</b>	35.6 cm
<b>Frame</b>	6.0 Yearling
<b>Aust. Reg. No.</b>	USA18159093

- Powerpoint is a marbling specialist, ratioing 221 for IMF in a contemporary group of 76. Calving ease, growth, carcase quality, strong maternal traits and excellent feet...he has it all!
- Powerpoint Progeny were the top sire group for Marbling scan data at Ellingson Angus in 2017.
- Powerpoint progeny in Australia are outstanding, numerous progeny reports with comments such as "born easy", "stylish from day one", "docile" and "best calves weaned in a long time" have been received.

2019 Mid July Angus Breedplan																						
Trait	CE Dir	CE Dtrs	GL	BWT	200	400	600	MCW	Milk	DTC	SS	DOC	CWT	EMA	RIB	P8	RBY	IMF	ABI	DOM	GRN	GRS
EBV	2.8	2.4	-4.8	2.5	58	108	129	92	16	-3.4	1.1	-	75	4.4	0.4	-0.5	-0.4	1.8	\$127	\$127	\$127	\$128
(Acc)	58%	32%	87%	87%	80%	78%	75%	73%	70%	31%	70%	-	73%	68%	69%	60%	63%	66%				
Perc	15	17	35	13	3	1	8	47	42	67	80	-	8	62	35	60	85	45				



# GAR PROPHET



Tattoo: 6128 Born: 15/8/2008

Bull code: 7AN320

Sire	BAR Ext Traveler 205 <b>CRA Bextor 872 5205 608</b> CRA Lady Jaye 608 498 S
Dam	SS Objective T510 OT26 <b>GAR Objective 1885</b> GAR 1407 New Design 2232
Actual BW	35 Kg
Weaning Wt.	350 Kg
Yearling Wt.	707 Kg
Yearling SC	37 cm
Frame	6.2
Aust. Reg. No.	USA16298688

- Mr Reliable when it comes to sires that offer high carcase merit.
- Prophet continues to be one of the highest marbling sires in the USA and ranks in the top 1% in Australia for %IMF at +3.9.
- Below average BW, trait leading growth, high EMA, breed leading %IMF and positive fat EBV's, GAR prophet ticks all the boxes.
- Combine Prophet's breed leading growth with his excellent carcase data and it's easy to see how you can make a profit.
- A sire that transmits excellent docility and an eye appealing phenotype to his progeny.

## 2019 Mid July Angus Breedplan

Trait	CE Dir	CE Dtrs	GL	BWT	200	400	600	MCW	Milk	DTC	SS	DOC	CWT	EMA	RIB	P8	RBY	IMF	ABI	DOM	GRN	GRS
EBV	1.4	2.2	-1.2	3.4	65	108	131	83	26	-6.7	0.8	8	72	6.1	0.8	1.3	-1.4	3.9	\$151	\$135	\$169	\$142
(Acc)	96%	89%	99%	99%	99%	99%	99%	98%	97%	73%	98%	98%	96%	94%	94%	94%	91%	94%				
Perc	34	20	91	28	1	1	6	66	1	11	90	36	13	33	25	14	98	1	2	1	3	2

# GAR PROPHECY



Tattoo: 8293 Born: 19/9/2013

Bull code: 7AN422

Sire	CRA Bextor 872 5205 608 <b>GAR Prophet</b> GAR Objective 1885
Dam	B/R Ambush 28 <b>GAR 28 Ambush 181</b> GAR Predestined 1869
Actual BW	27 Kg
Weaning Wt.	297 Kg
Yearling Wt.	546 Kg
Yearling SC	39 cm
Frame	5.9 Yearling
Aust. Reg. No.	USA17623660

- Early progeny data indicates progeny are born light with added growth.
- A standout for Structural EBVs and +6 for Docility.
- Like his sire, a low-birth, high-growth bull with loads of carcase extras.
- Destined to be a breed improver siring gentle, fast growing, high carcase merit, docile and structurally correct progeny.

## 2019 Mid July Angus Breedplan

Trait	CE Dir	CE Dtrs	GL	BWT	200	400	600	MCW	Milk	DTC	SS	DOC	CWT	EMA	RIB	P8	RBY	IMF	ABI	DOM	GRN	GRS
EBV	2.4	1.9	-3.6	3.2	61	102	130	96	23	-4.8	2.0	6	72	5.3	-0.9	-1.3	-0.7	3.8	\$142	\$127	\$163	\$132
(Acc)	78%	64%	98%	97%	95%	95%	94%	89%	84%	54%	92%	86%	85%	84%	85%	81%	79%	83%				
Perc	20	25	58	25	1	4	7	38	3	40	40	43	13	47	78	80	91	2	7	6	6	8





Tattoo: L292 Born: 7/8/2015 **Bull code: LEAD EDGEL292** Bred & Owned by: Topbos Angus, Cowra NSW

- The go to growth son of GAR Prophet in Australia.
- Currently ranks in the top 1% for 8 individual EBVs/\$Indexes.
- Leading Edge offers exceptional growth combined with excellent carcase traits.
- A sire with added muscle and mass, currently weighing over 1200kg with a quiet disposition.
- His excellent feet and legs and quiet disposition has impressed all who have inspected him and progeny reports from renowned Australian herds have been outstanding making him a repeat use sire.



Sire: GAR Prophet

<b>Sire</b>	CRA Bextor 872 5205 608 <b>GAR Prophet</b> GAR Objective 1885
<b>Dam</b>	Te Mania Berkley B1 <b>Strathewen Berkley Blackbird F04</b> Strathewen 458N Blackbird D52
<b>Actual BW</b>	53 Kg
<b>Weaning Wt.</b>	457 Kg
<b>Yearling Wt.</b>	622 Kg
<b>Yearling SC</b>	38 cm
<b>Frame</b>	6.5
<b>Aust. Reg. No.</b>	DBLL292

2019 Mid July Angus Breedplan																						
Trait	CE Dir	CE Dtrs	GL	BWT	200	400	600	MCW	Milk	DTC	SS	DOC	CWT	EMA	RIB	P8	RBY	IMF	ABI	DOM	GRN	GRS
EBV	0.3	1.8	-5.2	6.7	71	122	157	142	21	-6.7	2.1	13	85	4.5	0.2	-0.5	-0.2	2.7	\$157	\$136	\$178	\$147
(Acc)	72%	57%	95%	95%	88%	83%	82%	77%	68%	50%	77%	86%	74%	68%	70%	69%	65%	67%				
Perc	52	27	28	94	1	1	1	1	8	11	35	22	1	60	43	60	78	15	1	1	2	1

# Aryvale BARTEL E7

Genetics  
AUSTRALIA



Born: 9/9/2009

Bull code: BARTELE7

Sire	B/R New Dimension 7127 <b>Te Mania Bartel B219</b> Te Mania Jedda W85
Dam	Mytty in Focus <b>Eaglehawk Jedda B32</b> Eaglehawk Jedda Z48
Actual BW	30 Kg
Weaning Wt.	270 Kg
Yearling Wt.	502 Kg
Yearling SC	39.5 cm
Frame	6.5
Aust. Reg. No.	HIOE7



- Bartel E7 still commands high use in both the Seedstock and Commercial sectors of the Angus breed.
- Without a doubt Aryvale Bartel E7 is one of the most influential sires in the Angus breed.
- E7 is the highest proven calving ease and carcass sire currently available. No need to risk using an uproven sire when you can use Bartel E7.
- The standout carcass sires in Cohort 2 of the Angus young sire program, proving E7 to be one of the most balanced Angus sires available today.
- If you are serious about producing high quality beef, you need to use Bartel E7.
- Ranked #1 sire of Cohort 2 for MSA Marble Score and MSA Index.

## 2019 Mid July Angus Breedplan

Trait	CE Dir	CE Dtrs	GL	BWT	200	400	600	MCW	Milk	DTC	SS	DOC	CWT	EMA	RIB	P8	RBY	IMF	ABI	DOM	GRN	GRS
EBV	4.3	4.9	-5.6	1.7	49	88	113	67	27	-10.1	2.3	-12	75	7.3	-0.9	0.3	0.1	3.4	\$160	\$136	\$182	\$146
(Acc)	98%	96%	99%	99%	99%	99%	99%	99%	99%	87%	99%	99%	98%	97%	97%	97%	96%	96%				
Perc	3	1	23	5	27	28	33	89	1	1	25	94	8	16	78	35	65	4	1	1	1	1

# Landfall MOJO M45

Genetics  
AUSTRALIA



Tattoo: M45 Born 15/7/2016

Bull code: MOJOM45

Sire	Te Mania Bartel B21 <b>Aryvale Bartel E7</b> Eaglehawk Jedda B32
Dam	Sitz Upward 307R <b>Landfall Elsa K696</b> Landfall Elsa F485
Actual BW	35.5 Kg
Weaning Wt.	295 Kg
Yearling Wt.	496 Kg
Yearling SC	39 cm (600d)
Frame	6.1
Aust. Reg. No.	TFAM45

- Mojo sold for \$32,000 in the Landfall Angus Autumn bull sale, purchased by Kansas Angus, NSW.
- Sired by breed legend Aryvale Bartel E7 and bred from a line of matriarchs from the Landfall breeding program.
- Mojo's grand dam Landfall Elsa F485 was recently purchased by Reiland Angus and his great grand dam Landfall Elsa V47 has been a leading ET donor with 52 progeny including 21 daughters in production.

## 2019 Mid July Angus Breedplan

Trait	CE Dir	CE Dtrs	GL	BWT	200	400	600	MCW	Milk	DTC	SS	DOC	CWT	EMA	RIB	P8	RBY	IMF	ABI	DOM	GRN	GRS
EBV	-5.4	1.5	-6.7	6.3	60	109	139	106	20	-7.7	2.5	-	83	8	0.1	0.4	0.8	2.8	\$154	\$131	\$174	\$142
(Acc)	79%	61%	96%	94%	90%	81%	82%	77%	67%	53%	74%	-	74%	66%	69%	67%	64%	66%				
Perc	97	32	12	90	1	1	2	21	12	4	18	-	2	10	45	33	35	13	2	2	2	2



# SAV RAINDANCE

NEW

STgenetics®



Tattoo: 6848 Born 11/1/2016 **Bull code: 551AN01485**

Dam: SAV Blackcap May 4136



- Raindance's progeny have captured the attention of the Angus world and have put him on the fast track to stardom.
- Proclaimed by many as the pick of the flush, Raindance has separated himself with impeccable phenotype and the one Kelly Schaff used heavily in his program.
- One of the highest use bulls in the USA the past 12 months, now available in Australia.

<b>Sire</b>	OCC Paxton 730P <b>Coleman Charlo 0256</b> Bohi Abigale 6014
<b>Dam</b>	SAV 8180 Traveler 004 <b>SAV Blackcap May 4136</b> SAV May 2397
<b>Actual BW</b>	35 Kg
<b>Weaning Wt.</b>	478 Kg
<b>Yearling Wt.</b>	726 Kg
<b>Yearling SC</b>	40.9 cm
<b>Frame</b>	6.0 Yearling
<b>Aust. Reg. No.</b>	USA18578965

- Raindance sons and daughters were well received by a large crowd at the Schaff Angus Valley Production sale this year in February.
- Raindance progeny are stunners — extra-long, deep-bodied and stout-rumped with all the power, performance and presence you can put in one package.
- Raindance is the perfect outcross option for many popular lines of cattle to add body length, eye appeal and the maternal power of the great Blackcap May 4136 who is the dam of SAV Resource.

2019 Mid July Angus Breedplan																						
Trait	CE Dir	CE Dtrs	GL	BWT	200	400	600	MCW	Milk	DTC	SS	DOC	CWT	EMA	RIB	P8	RBY	IMF	ABI	DOM	GRN	GRS
EBV	0.5	-0.6	-2.8	4.1	58	108	124	71	18	-3.4	2.3	-	75	8.9	-0.1	-0.2	2	0.4	\$127	\$134	\$116	\$133
(Acc)	44%	36%	63%	76%	73%	72%	69%	68%	70%	35%	69%	-	70%	67%	66%	57%	62%	63%				
Perc	48	71	72	45	3	1	13	85	24	67	25	-	8	5	53	50	4	90	27	1	55	7





Can your bull  
get more than  
half your cows  
**PREGNANT**  
on the first day of  
breeding season?

Ben Simpson

*He can't but,*  
**WE CAN!**

Contact Genetics Australia today to:

- **Increase Pregnancy Rates**  
Give your females more chances to conceive
- **Increase Weaning Weights**  
Early-born calves are heavier at weaning
- **Use predictable Genetics**  
High accuracy bulls to allow you to hit your target
- **Improve Uniformity**  
Same age, weight and colour calves are worth more
- **Increase Cow Productivity**  
Early-born heifers have higher lifetime profitability



**It's Time to AI**

Freecall: 1800 039 047

[www.genaust.com.au](http://www.genaust.com.au)

**Genetics** AUSTRALIA  
Breeding better Australian herds



# Warrawee PATROL P29

NEW

Genetecs  
AUSTRALIA

Tattoo: P29 Born 7/4/2018  
Bred and Owned by: Gary Legg, QLD

Bull code: PATROL929

Sire	Te Mania Berkley B1 <b>Pathfinder Genesis G357</b> Pathfinder Direction D245
Dam	Ayrvale General G18 <b>Warrawee General Turiku M1</b> Kansas Tariku B10
Frame	6.0 Yearling
Aust. Reg. No.	QKBP29



- New Australian sire released this Spring
- Patrol's pedigree combines Genesis X General G18 X Ardrossan Direction W109
- An exciting new calving ease prospect, with short GL and below average BW
- Superb growth spread with all growth traits in the top 3% of the breed with excellent carcase merit.

2019 Mid July Angus Breedplan																						
Trait	CE Dir	CE Dtrs	GL	BWT	200	400	600	MCW	Milk	DTC	SS	DOC	CWT	EMA	RIB	P8	RBY	IMF	ABI	DOM	GRN	GRS
EBV	3.7	3.5	-9.4	3	58	104	138	126	18	-7.5	3.0	3	99	9.5	2.6	0.1	-0.4	2.7	\$157	\$132	\$175	\$146
(Acc)	61%	48%	76%	74%	75%	73%	73%	70%	66%	50%	70%	60%	68%	67%	70%	67%	63%	66%				
Perc	6	5	1	20	3	2	3	4	24	5	7	54	1	3	2	43	85	15	1	2	2	1

# Worthington ALL PROFIT

NEW



Tattoo: 576 Born 9/8/2016

Bull code: 7AN476

Sire	AAR Ten X 7008 S A <b>Deer Valley All In</b> Deer Valley Rita 0274
Dam	GAR Prophet <b>Worthington Prophet 318</b> HPCA Predestined G109
Actual BW	25 Kg
Weaning Wt.	306 Kg
Yearling Wt.	501 Kg
Yearling SC	38 cm
Frame	5.1 Yearling
Aust. Reg. No.	USA18659447



- New Sire in 2019 available in Australia.
- Combining ALL IN with PROPHET creates a value proposition worth considering.
- Profit-driven sire with a tremendous blend of performance, power and high maternal traits in a moderate package.
- Impressive hind quarter and a balanced look while posting strong ratios for WW and YW.

2019 June Angus USA Sire Summary																						
Trait	CE	BW	WW	YW	RADG	DMI	YH	SC	DOC	Claw	Angle	HP	CEM	MILK	MW	MH	SEN	CW	MARB	RE	FAT	SM
EPD	14	-0.3	70	120	0.23	1.12	0.6	0.85	19	0.65	0.52	15.8	15	29	34	0.4	-8	58	1.07	0.86	0.019	83
ACC	0.46	0.69	0.55	0.45	0.36	0.36	0.54	0.49	0.4	0.29	0.29	0.28	0.34	0.35	0.41	0.44		0.46	0.41	0.41	0.39	
% Rank	4	20	10	15	30	95	35	45	35	100	60	5	2	20	45	40	65	10	5	10	60	4

# Connealy CAPITALIST 028



Tattoo: 028 Born: 11/1/2010

Bull code: 7AN351

Sire	Sitz Traveler 8180 <b>SAV Final Answer 0035</b> SAV Emulous 8145
Dam	CRA Bextor <b>Prides Pita of Conanga 8821</b> Pretty Pet of Conanga
Actual BW	31 Kg
Weaning Wt.	391 Kg
Yearling Wt.	655 Kg
Yearling SC	37 cm
Frame	5.8 Yearling
Aust. Reg. No.	USA16752262

- The original Capitalist, with over 7,500 progeny recorded in the USA, he is one of the highest proven calving ease and low BW sires currently available in the angus breed.
- Unmatched in his ability to transmit body mass, base width and visual muscle.
- A sire that adds dimension every time, excellent mating choice for larger-framed cattle that need rib and dimension.
- Cowmaker deluxe, his daughters are easy keeping with perfect udders and raise heavy calves.

## 2019 Mid July Angus Breedplan

Trait	CE Dir	CE Dtrs	GL	BWT	200	400	600	MCW	Milk	DTC	SS	DOC	CWT	EMA	RIB	P8	RBY	IMF	ABI	DOM	GRN	GRS
EBV	4.5	2.9	-5.1	1.7	48	84	105	68	10	-3.1	1.5	-5	54	8.2	0.3	-1.5	1.9	1.3	\$122	\$124	\$120	\$124
(Acc)	77%	59%	96%	96%	92%	92%	91%	89%	85%	55%	91%	68%	85%	85%	86%	82%	81%	83%				
Perc	2	10	30	5	32	41	53	88	90	72	65	80	70	9	40	83	5	65	35	10	50	20

# Deer Valley PATRIOT



Tattoo: 3222 Born: 4/2/2013

Bull code: 7AN418

Sire	SAV Final Answer 0035 <b>Connealy Capitalist 028</b> Prides Pita of Conanga 8821
Dam	Sitz Upward 307R <b>Deer Valley Rita 0274</b> GAR Objective 2345
Actual BW	32 Kg
Weaning Wt.	443 Kg
Yearling Wt.	653 Kg
Yearling SC	37.5 cm
Frame	6.2 Yearling
Aust. Reg. No.	USA17577916

- Patriot's combination of calving ease and growth is unmatched by any other Capitalist sons in Australia. He is currently the highest growth son of Connealy Capitalist in Australia and boasts a +6 docility EBV.
- Patriot offers a great spread from BW to 600D growth
- An impressive sire when inspected in the USA and his progeny are just as impressive.
- Patriot offers added width, capacity and sound feet and leg structure.
- Sired by the wide body tank Connealy Capitalist and a maternal brother to Deer Valley All In.

## 2019 Mid July Angus Breedplan

Trait	CE Dir	CE Dtrs	GL	BWT	200	400	600	MCW	Milk	DTC	SS	DOC	CWT	EMA	RIB	P8	RBY	IMF	ABI	DOM	GRN	GRS
EBV	3.1	2.4	-6	2.4	59	110	138	100	17	-0.5	0.2	6	81	9	-3.1	-5.6	2.7	2.1	\$143	\$140	\$158	\$140
(Acc)	76%	53%	98%	97%	94%	94%	93%	84%	78%	48%	88%	90%	82%	80%	82%	77%	76%	79%				
Perc	12	17	18	11	2	1	3	31	33	95	97	43	2	5	99	99	1	33	6	1	8	2





Tattoo: 5213 Born 12/3/2015 Bull code: 551AN01468



Son

<b>Sire</b>	SAV Final Answer 0035 <b>Connealy Capitalist 028</b> Prides Pita of Conanga 8821
<b>Dam</b>	KMK Alliance 6595 187 <b>LT Erica 0121</b> LT Erica of Bando 3016
<b>Actual BW</b>	33 Kg
<b>Weaning Wt.</b>	327 Kg
<b>Yearling Wt.</b>	652 Kg
<b>Yearling SC</b>	36 cm
<b>Frame</b>	5.9 yearling
<b>Aust. Reg. No.</b>	USA18316913

- Enterprise continues to be the “go to” heifer bull in the LT program because Brent Thiel knows the value of his maternal line..Capitalist, Alliance 187, Bando 9074 and Sitz Value.
- Enterprise is a perfect choice for commercial heifer programs where unassisted births, calf vigor and outstanding replacement heifers are a requirement.

- His first calf crop came completely unassisted from a large group of heifers in an extra-cold South Dakota winter.
- Here is your chance to tie into one of the great maternal sires available from one of the greatest cow herds in the Angus breed!

2019 Mid July Angus Breedplan																						
Trait	CE Dir	CE Dtrs	GL	BWT	200	400	600	MCW	Milk	DTC	SS	DOC	CWT	EMA	RIB	P8	RBY	IMF	ABI	DOM	GRN	GRS
EBV	2	1.4	-4	2.5	52	92	112	76	13	-3.6	1	-	64	5.3	0.1	-1.5	0.8	1.1	\$113	\$118	\$108	\$117
(Acc)	48%	40%	65%	76%	75%	75%	72%	71%	72%	41%	72%	-	72%	70%	71%	63%	65%	68%				
Perc	25	33	50	13	14	17	35	78	71	63	85	-	36	47	45	83	35	73				

# Granite Ridge KAISER K26

Genetics  
AUSTRALIA



Tattoo: K26 Born: 24/3/2014

Bull code: SJKK26

Sire	Te Mania Calamus C46 <b>Te Mania Foe F734</b> Te Mania Dandloo D700
Dam	Nichols Quiet Lad T9 <b>Granite Ridge Supreme F158</b> Granite Ridge Supreme D85
Actual BW	37 Kg
Weaning Wt.	425 Kg
Yearling Wt.	576 Kg
Yearling SC	46 cm Yearling
Frame	6.5 Yearling
Aust. Reg. No.	SJKK26

- Kaiser sons have topped the Granite Ridge and Koojan Hills bull sales in 2018.
- Bred from the outstanding "Supreme" cow family at Granite Ridge Angus.
- Kaiser K26 offers a unique pedigree with no sacrifice on performance or carcass traits.
- A true performance sire ranking in the top 5% of the breed for 200D, 400D and 600D growth.
- Top 2% of the breed for Docility EBV at +28.
- Kaiser progeny right across the country have been impressive in 2019 and will be in high demand in the future.

## 2019 Mid July Angus Breedplan

Trait	CE Dir	CE Dtrs	GL	BWT	200	400	600	MCW	Milk	DTC	SS	DOC	CWT	EMA	RIB	P8	RBY	IMF	ABI	DOM	GRN	GRS
EBV	2.8	2.5	-7.1	5	58	104	139	120	24	-7.1	2.3	28	82	9	1	-0.4	0.8	1.8	\$152	\$131	\$164	\$145
(Acc)	76%	60%	98%	97%	95%	95%	95%	83%	71%	48%	93%	93%	78%	81%	82%	80%	74%	79%				
Perc	15	15	9	68	3	2	2	7	2	8	25	2	2	5	20	58	35	45	2	2	5	1

# Quaker Hill DEAD CENTER

Genetics  
AUSTRALIA



Tattoo: 4EX Born: 12/3/2014

Bull code: AA1369

Sire	Exar Upshot 0562B <b>Exar Denver 2002B</b> Exar Royal Lass 1067
Dam	MCC Daybreak <b>Quaker Hill Blackcap 0A32</b> QHF Blackcap 6E2 of 4V16 4355
Actual BW	33 Kg
Weaning Wt.	354 Kg
Yearling Wt.	647 Kg
Yearling SC	40 cm Yearling
Frame	6.0 Yearling
Aust. Reg. No.	USA17831035

- Take aim and hit your breeding target in the "Dead Center"
- Dead Center's superb EBV profile has caught the attention of breeders across the country.
- Many customers ask, "I need a bull with calving ease that will give me excellent 400D growth", look no further than Dead Center.
- His dam is a full sister to Quaker Hill Rampage, and she is backed by one of the USA's most impressive cow families.
- Dead Center combines an excellent package of a breed leading EBV profile matched with an eye appealing phenotype with excellent feet and legs.

## 2019 Mid July Angus Breedplan

Trait	CE Dir	CE Dtrs	GL	BWT	200	400	600	MCW	Milk	DTC	SS	DOC	CWT	EMA	RIB	P8	RBY	IMF	ABI	DOM	GRN	GRS
EBV	3.2	2.2	-7	3.1	55	102	130	86	16	-3.6	1.9	-7	71	9.1	-0.5	-1.7	2	2.1	\$152	\$140	\$163	\$146
(Acc)	69%	41%	97%	96%	93%	92%	92%	82%	74%	42%	83%	80%	80%	76%	79%	73%	72%	75%				
Perc	11	20	9	23	7	4	7	60	42	63	45	85	15	5	65	87	4	33	2	1	6	1



# Jindra ACCLAIM



Tattoo: 134 Born: 13/1/2014

Bull code: 14AN461

<b>Sire</b>	Jindra Double Vision <b>Jindra 3RD Dimension</b> Jindra Sapphire J 417
<b>Dam</b>	Connealy Impression <b>Jindra Blackbird Lassy 1111</b> Jindras Enchantress J 102
<b>Actual BW</b>	38 Kg
<b>Weaning Wt.</b>	387 Kg
<b>Yearling Wt.</b>	716 Kg
<b>Yearling SC</b>	40 cm
<b>Frame</b>	6.5
<b>Aust. Reg. No.</b>	USA17972810

- Acclaim offers calving ease, short GL and breed leading growth.
- Sons of Acclaim have been in high demand in recent USA bull sales with many going to AI bull studs.
- Larger framed with sound feet & legs, Acclaim is a next generation power sire.
- Acclaim ranks in the top 1% for 200, 400, 600D and Carcase Weight EBV's.
- If you are looking for a sire to add frame and body mass, look no further than Jindra Acclaim.

2019 Mid July Angus Breedplan																						
Trait	CE Dir	CE Dtrs	GL	BWT	200	400	600	MCW	Milk	DTC	SS	DOC	CWT	EMA	RIB	P8	RBV	IMF	ABI	DOM	GRN	GRS
EBV	1.2	1.8	-8.1	4.2	65	123	147	109	16	-1.3	0.4	-	94	6.9	-2.6	-3.2	2.2	1.3	\$143	\$144	\$149	\$143
(Acc)	59%	37%	87%	84%	78%	77%	74%	72%	73%	34%	71%	-	74%	70%	71%	62%	65%	68%				
Perc	37	27	4	48	1	1	1	17	42	91	96	-	1	21	98	98	2	65	6	1	15	1

# EWA HIGH WEIGH 3123



Tattoo: 3123 Born: 10/1/2013

Bull code: 7AN425

<b>Sire</b>	Sitz Upward 307R <b>Plattemere Weigh Up K360</b> Barbara of Plattemere 337
<b>Dam</b>	GAR New Design 5050 <b>Edgewood Jaunty 128</b> Edgewood Jaunty 935
<b>Actual BW</b>	38 Kg
<b>Weaning Wt.</b>	336 Kg
<b>Yearling Wt.</b>	635 Kg
<b>Yearling SC</b>	37 cm
<b>Frame</b>	6.8 Yearling
<b>Aust. Reg. No.</b>	USA17816333

- From a pedigree stacked five generations deep with proven genetics.
- A good lookin', three-dimensional Weigh Up son with a great disposition.
- Offers high octane growth to generate extra kilograms and more profit.
- High Weigh now boasts a massive 600D EBV of +164
- Use to add length, frame and muscle to fast-growing calves.
- Scale smashing growth in the top 1% of the breed and top 1% for all \$Value Indexes.

2019 Mid July Angus Breedplan																						
Trait	CE Dir	CE Dtrs	GL	BWT	200	400	600	MCW	Milk	DTC	SS	DOC	CWT	EMA	RIB	P8	RBV	IMF	ABI	DOM	GRN	GRS
EBV	1.1	1	-6.5	4.9	70	127	164	128	18	-1.2	1.7	-	90	7.7	-3.7	-5.8	2.8	2.5	\$164	\$150	\$188	\$155
(Acc)	58%	45%	71%	78%	78%	77%	75%	73%	73%	41%	73%	-	74%	72%	73%	65%	67%	70%				
Perc	38	42	13	65	1	1	1	3	24	92	55	-	1	13	99	99	1	20	1	1	1	1

VAR

**DISCOVERY** 2240

Accelerated Genetics®



Tattoo: 2240 Born: 6/3/2012

Bull code: 14AN422

Sire

 Mytty In Focus  
**AAR Ten X 7008 SA**  
 AAR Lady Kelton 5551

Dam

 Sitz Upward 307R  
**Deer Valley Rita 0308**  
 GAR Objective 2345

Actual BW

35 Kg

Weaning Wt.

358 Kg

Yearling Wt.

595 Kg

Mature Wt.

1130 kg

Scrotal

42 cm

Frame

6.0 Mature

Aust. Reg. No.

USA17262835

- Discovery has been one of the recent dominant sires in the USA, with progeny topping sales right across the USA, the trend now continues in Australia with Discovery sons topping sales in Australia.
- Discovery has taken the term "curve bender" to a whole new level whilst keeping mature cow weight in check.
- A maternal pedigree that traces back to GAR Objective 2345, a leading donor at Deer Valley Farms and the dam of GAR Progress who is one of the highest marbling sires in the Angus breed.

## 2019 Mid July Angus Breedplan

Trait	CE Dir	CE Dtrs	GL	BWT	200	400	600	MCW	Milk	DTC	SS	DOC	CWT	EMA	RIB	P8	RBY	IMF	ABI	DOM	GRN	GRS
EBV	-3.3	1.2	-4.1	3.8	65	128	159	111	25	-3.9	3.9	-5	88	5.6	-2.1	-2.9	1.7	2.8	\$161	\$145	\$185	\$151
(Acc)	80%	59%	98%	98%	97%	97%	96%	86%	81%	56%	95%	94%	85%	87%	87%	83%	81%	85%				
Perc	90	38	48	37	1	1	1	14	1	58	1	80	1	40	96	97	8	13	1	1	1	1

VAR

**INDEX** 3282

Accelerated Genetics®



USA17513381 Tattoo: 3282 Born: 1/4/2013

Bull code: 14AN439

Sire

 GAR New Design 5050  
**GAR Ingenuity**  
 GAR Objective 1067

Dam

 Connealy Onward  
**Sandpoint Blackbird 8809**  
 Riverbend Blackbird 4301

Actual BW

35 Kg

Weaning Wt.

290 Kg

Yearling Wt.

550 Kg

Yearling SC

35.5 cm

Frame

6.0 Yearling

Aust. Reg. No.

USA17513381

- Index combines added EMA needed for improving yield grade, with excellent %IMF.
- If you're aiming towards a value-based market, VAR Index will increase your carcass value.
- Index offers a 400D EBV in the top 5% of the breed and a massive +15 EMA EBV.
- Index's dam is a featured donor at Vintage Angus Ranch where she has generated over \$1.5 million in progeny sales and is the dam of VAR Reserve and VAR Generation 2100.
- Index progeny exhibit excellent muscle pattern with excellent growth with a moderate frame.

## 2019 Mid July Angus Breedplan

Trait	CE Dir	CE Dtrs	GL	BWT	200	400	600	MCW	Milk	DTC	SS	DOC	CWT	EMA	RIB	P8	RBY	IMF	ABI	DOM	GRN	GRS
EBV	2.0	-0.3	-4.6	3.8	53	101	119	90	23	-4.6	0.3	2	69	15.0	-0.9	-1.2	2.8	2.2	\$152	\$144	\$165	\$145
(Acc)	76%	60%	98%	98%	96%	96%	95%	91%	85%	54%	94%	92%	87%	86%	86%	84%	80%	86%				
Perc	25	67	38	37	11	4	21	51	3	43	97	58	20	1	78	78	1	30	2	1	5	1



USA17513381 Tattoo: 3282 Born: 1/4/2013 **Bull code: 551AN01477**

Dam: Wilks Blackcap OD82



<b>Sire</b>	Connealy Consensus 7229 <b>Connealy Black Granite</b> Eura Elga of Conanga 9109
<b>Dam</b>	MCC Daybreak <b>Wilks Blackcap OD82</b> QHF Blackcap 6E2 of 4V16 4355
<b>Actual BW</b>	35 Kg
<b>Weaning Wt.</b>	314 Kg
<b>Yearling Wt.</b>	568 Kg
<b>Yearling SC</b>	36.8 cm
<b>Frame</b>	5.9 Yearling
<b>Aust. Reg. No.</b>	USA18463791

- The industry's leading Connealy Black Granite son for growth.
- A genomic standout in the release of single step analysis in 2018.
- Curve bending genetics with a combination of +2.2 BW and massive +149 600D EBV's.

- Black Onyx ranks in the top 1% for all growth EBV's, CWT and three individual \$ Value Indexes.
- His dam Wilks Blackcap OD82 is a full sister to Rampage.

2019 Mid July Angus Breedplan																						
Trait	CE Dir	CE Dtrs	GL	BWT	200	400	600	MCW	Milk	DTC	SS	DOC	CWT	EMA	RIB	P8	RBY	IMF	ABI	DOM	GRN	GRS
EBV	2.6	2.3	-7.2	2.2	66	121	149	105	22	-3.7	2.2	-	91	8.4	-1.6	-3.7	2.6	1.5	\$157	\$150	\$167	\$153
(Acc)	56%	35%	78%	79%	76%	75%	73%	71%	71%	35%	69%	-	72%	69%	70%	62%	64%	67%				
Perc	18	18	8	9	1	1	1	22	5	62	30	-	1	8	91	99	1	55	1	1	4	1



# TEX PLAYBOOK 5437



Tattoo: 5437 Born: 3/8/2015

Bull code: 7AN463

Sire	Basin Payweight 006S <b>Basin Payweight 1682</b> 21AR O Lass 7017
Dam	Summitcrest Complete 1P55 <b>Rita 1C43 of 9M26 Complete</b> Rita 9M26 of Rita 5F56 Pred
Actual BW	34 Kg
Weaning Wt.	381 Kg
Yearling Wt.	661 Kg
Yearling SC	42 cm
Frame	N/A
Aust. Reg. No.	USA18414912

- Playbook progeny have been in high demand in recent USA bull sales, progeny topping numerous sales. 32 sons averaged \$7,359usd at the TD Angus sale in March 2019.
- Payweight's most complete son combining powerful phenotype with unmatched data in the USA.
- He is stout, smooth and big-middled with lots of base width and muscle expression.
- Playbook has passed every test – unique pedigree, flawless phenotype, outstanding individual performance, elite genomics and outstanding progeny.

2019 Mid July Angus Breedplan																							
Trait	CE Dir	CE Dtrs	GL	BWT	200	400	600	MCW	Milk	DTC	SS	DOC	CWT	EMA	RIB	P8	RBY	IMF	ABI	DOM	GRN	GRS	
EBV	-1.1	0.4	-2.6	2.7	56	92	109	56	26	-5.1	1.7	-	74	6.4	0.6	0.2	0.1	1.6	\$110	\$114	\$101	\$113	
(Acc)	52%	50%	71%	79%	78%	78%	76%	73%	73%	39%	74%	-	75%	73%	73%	66%	67%	70%					
Perc	73	53	75	15	5	17	43	96	1	33	55	-	9	28	30	40	65	53	60	35	75	48	

# Connealy COMMONWEALTH



Tattoo: 5129 Born: 14/1/2015

Bull code: 203AN01463

Sire	Basin Payweight 006S <b>Basin Payweight 1682</b> 21AR O Lass 7017
Dam	Connealy Capitalist 028 <b>Parisian of Conanga 3582</b> Parsitta of Conanga 181
Actual BW	31 Kg
Weaning Wt.	341 Kg
Yearling Wt.	583 Kg
Yearling SC	35.8 cm
Frame	5.6 Yearling
Aust. Reg. No.	USA18230653

 Available in  
**SexedULTRA4M**

- Commonwealth was the standout 1682 son of the 2016 Connealy offering with a great look and a solid genetic profile.
- Talk about a pedigree built for cow power...his Capitalist x Dash dam is one of the great young cows in the Connealy herd.
- Commonwealth has all the fundamentals for a cow herd to be profitable...excellent calving ease, solid growth and carcass EBVs with moderate projections for daughter mature size.

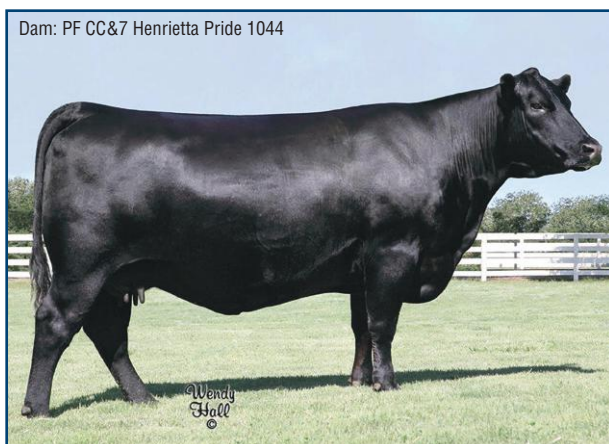
2019 Mid July Angus Breedplan																						
Trait	CE Dir	CE Dtrs	GL	BWT	200	400	600	MCW	Milk	DTC	SS	DOC	CWT	EMA	RIB	P8	RBY	IMF	ABI	DOM	GRN	GRS
EBV	2.4	1.4	-1.6	0.9	46	84	91	41	18	-4.9	2.0	-12	58	6.1	1.5	0.8	1.1	0.9	\$109	\$122	\$95	\$114
(Acc)	69%	46%	95%	92%	86%	83%	81%	77%	73%	37%	78%	60%	77%	72%	73%	66%	67%	70%				
Perc	20	33	88	2	43	41	81	99	24	37	40	94	57	33	10	23	23	78	63	13	81	45





Tattoo: 5019 Born: 7/1/2015 Bull code: 551AN1476

Dam: PF CC&7 Henrietta Pride 1044



<b>Sire</b>	AAR Ten X 7008 S A <b>VAR Discovery 2240</b> Deer Valley Rita 0308
<b>Dam</b>	Syngen C C & 7 <b>PF CC&amp;7 Henrietta Pride 1044</b> Sitz Henrietta Pride 643T
<b>Actual BW</b>	35 Kg
<b>Weaning Wt.</b>	368 Kg
<b>Yearling Wt.</b>	701 Kg
<b>Yearling SC</b>	40.2 cm
<b>Frame</b>	6.2 Yearling
<b>Aust. Reg. No.</b>	USA18066037

- Legend is the Lot 1 featured bull from the 2016 VAR bull sale that has all the mass and substance necessary to back up his incredible performance data that ranks in the top 1% of the breed.
- Bold ribbed with a big square hip, use Legend to add muscle, performance and Angus character.
- Legend offers a breed leading EBV package with all growth traits and Indexes in the top 1%.

- His dam is an impressive maternal powerhouse which has a progeny sales averaging \$31,000 at VAR.
- Inspected in 2017 & 2018, this larger framed Discovery son was impressive.
- Legends MGD Sitz Henrietta Pride 643T is a full sister to Sitz Upward and a leading Donor in the USA.

2019 Mid July Angus Breedplan																						
Trait	CE Dir	CE Dtrs	GL	BWT	200	400	600	MCW	Milk	DTC	SS	DOC	CWT	EMA	RIB	P8	RBY	IMF	ABI	DOM	GRN	GRS
EBV	2.1	1.4	-7.4	4.1	65	122	150	114	19	-2.4	2.2	8	88	7.4	-3.2	-4.7	3.3	2.2	\$162	\$154	\$183	\$154
(Acc)	61%	42%	83%	83%	81%	79%	77%	74%	73%	40%	75%	61%	75%	72%	73%	66%	67%	70%				
Perc	24	33	7	45	1	1	1	11	18	81	30	36	1	15	99	99	1	30				



# TCA VISIONARY 158

Genetics  
AUSTRALIA



Tattoo: 158 Born: 14/3/2011

Bull code: VISIONARY

Sire	SAF Connection <b>Syden C C &amp; 7</b> Syden Forever Lady 4087
Dam	SAV 5175 Bando 4597 <b>TCA Treasure 0699 601</b> Sweetwater Treasure 73M

- Seldom do bulls come along that have the ability to strengthen every economic trait like Visionary.
- A sire that excels not only on Australian Angus EBV's but also \$Profit Across Breed EBV's (ABE's).
- Visionary has earned the reputation for breeding functional and efficient females with excellent udders across multiple countries.
- Increase the profitability of your program with this highly feed efficient sire.
- Visionary sits in the top 3% of the breed for Docility at +27.

\$Profit ABE		\$Profit Index Value	
		<b>\$22,266</b>	
Value	%Rank	\$Profit ABE as of 4/7/2019	
\$Ranch	\$79.44	2	
\$Feeder	\$153.35	5	
\$Terminal	\$10,946	1	
Feed:Gain	-0.46	1	
Intake	-78.76	9	
Accuracy	*****	SC	1.24
C Ease	***	Mat Wt	5
Growth	*****	REA	1.03
Maternal	*****	IMF	0.76
Feed/Carc	****	Carc Wt	795
Disposition	****	BF	0.02

## 2019 Mid July Angus Breedplan

Trait	CE Dir	CE Dtrs	GL	BWT	200	400	600	MCW	Milk	DTC	SS	DOC	CWT	EMA	RIB	P8	RBY	IMF	ABI	DOM	GRN	GRS
EBV	3.1	-0.4	-4.4	2.0	47	79	104	74	16	-4.4	2.0	27	63	11.7	-0.5	-1.6	2.6	1.7	\$130	\$123	\$134	\$127
(Acc)	79%	63%	97%	97%	96%	95%	94%	87%	86%	53%	93%	81%	85%	86%	87%	84%	81%	85%				
Perc	12	68	42	8	38	59	55	81	42	47	40	3	40	1	65	85	1	50	20	12	30	15

# JMB TRACTION 292



Tattoo: 292 Born: 11/3/2012

Bull code: 7AN394

Sire	GDAR Game Day 449 <b>Sitz Top Game 561X</b> Sitz Pride 88 Sitz Pride 88T
Dam	SAV 004 Predominant 4438 <b>JMB Emulota 013</b> BAR S Emulota 5426

Actual BW	34 Kg
Weaning Wt.	342 Kg
Yearling Wt.	592 Kg
Yearling SC	36 cm
Frame	6.0 Yearling
Aust. Reg. No.	USA17262374

- The outcross performance sire breeders have been searching for in the Angus population.
- Top 5% for all growth EBV's.
- A wide-bodied tank...Use to add volume and capacity, depth and base width.
- As we gather more data on progeny, Traction continue to impress, his progeny are outstanding and highly sought after in recent bull sales.
- Traction is a sire that consistently breeds well and does everything right, his daughters in production are excellent dams.

## 2019 Mid July Angus Breedplan

Trait	CE Dir	CE Dtrs	GL	BWT	200	400	600	MCW	Milk	DTC	SS	DOC	CWT	EMA	RIB	P8	RBY	IMF	ABI	DOM	GRN	GRS
EBV	-2.1	-2.2	0.6	4.4	59	108	137	88	24	-4.0	2.2	1	71	10.3	-0.9	-1.6	2.0	1.1	\$135	\$128	\$135	\$135
(Acc)	81%	66%	99%	98%	98%	98%	97%	90%	87%	47%	96%	96%	87%	88%	88%	85%	81%	86%				
Perc	83	89	98	53	2	1	3	56	2	55	30	61	15	2	78	85	4	73	14	5	29	5



# ACC BOURBON 0115



Tattoo: 115 Born: 1/1/2015

Bull code: 7AN454

<b>Sire</b>	AAR Ten X 7008 S A <b>VAR Discovery 2240</b> Deer Valley Rita 0308
<b>Dam</b>	Southern New Design 94027 <b>Apple Rita 26430</b> GAR Objective 1067
<b>Actual BW</b>	39 Kg
<b>Weaning Wt.</b>	392 Kg
<b>Yearling Wt.</b>	602 Kg
<b>Yearling SC</b>	39.5 cm
<b>Frame</b>	N/A
<b>Aust. Reg. No.</b>	USA18151336

- The crowd favourite and top selling bull of the 2016 Midland Bull Test.
- The most complete Discovery son to enter the A.I. Industry.
- Very clean fronted with a smooth shoulder and extra length of body, square and level hip with a bold turn to his top, yet deep and soft in his centre portion.
- Calving Ease prospect with exceptional Growth and breed leading \$Value Indexes.
- Maternal strength on top and bottom, his maternal granddam is also the dam of Ingenuity.

2019 Mid July Angus Breedplan																						
Trait	CE Dir	CE Dtrs	GL	BWT	200	400	600	MCW	Milk	DTC	SS	DOC	CWT	EMA	RIB	P8	RBV	IMF	ABI	DOM	GRN	GRS
EBV	2.6	2.1	-9.5	2.8	55	108	129	87	22	-6.9	2.6	9	70	2.7	-0.4	-0.4	0.6	2.5	\$151	\$140	\$167	\$142
(Acc)	65%	41%	93%	90%	83%	81%	79%	76%	73%	39%	74%	68%	76%	72%	73%	65%	67%	70%				
Perc	18	22	1	17	7	1	8	58	5	9	15	33	18	86	63	58	45	20	2	1	4	2

# Sitz RESPONSE 405C



Tattoo: 405C Born: 7/2/2015

Bull code: 203AN01457

<b>Sire</b>	Rito 707 of Ideal 3407 7075 <b>SAV Resource 1441</b> SAV Blackcap May 4136
<b>Dam</b>	Sitz Upward 307R <b>Sitz Ellunas Elite 656T</b> Sitz Ellunas Elite 35M
<b>Actual BW</b>	38 Kg
<b>Weaning Wt.</b>	328 Kg
<b>Yearling Wt.</b>	553 Kg
<b>Yearling SC</b>	38.2 cm
<b>Frame</b>	5.8 Yearling
<b>Aust. Reg. No.</b>	USA18219638

- Response is a sound Resource son from the dam of Sitz Investment that we expect to add muscle, fore rib and base width.
- Response offers low birth weight in a moderate package combined with excellent structure and positive fat EBV's.
- A pedigree stacked with maternal genetics that will produce efficient, feminine females that will remain in your herd.
- He has seen heavy use in the Hilltop, Sitz and KG programs in Montana.

2019 Mid July Angus Breedplan																						
Trait	CE Dir	CE Dtrs	GL	BWT	200	400	600	MCW	Milk	DTC	SS	DOC	CWT	EMA	RIB	P8	RBV	IMF	ABI	DOM	GRN	GRS
EBV	0.0	-1.6	-2.9	1.6	48	95	109	58	24	-5	2.3	-	64	8.3	1.4	2	1.3	0.6	\$120	\$124	\$106	\$125
(Acc)	58%	43%	72%	71%	71%	69%	69%	65%	60%	40%	66%	-	63%	62%	64%	61%	58%	61%				
Perc	57	84	70	5	32	11	43	95	2	35	25	-	36	8	12	6	15	85	40	10	69	18

Deer Valley  
**ALL IN**

Tattoo: 2138 Born: 23/1/2012

Bull code: 7AN379

Sire	Mytty In Focus <b>AAR Ten X 7008 SA</b> AAR Lady Kelton 5551
Dam	Sitz Upward 307R <b>Deer Valley Rita 0274</b> GAR Objective 2345
Actual BW	31 Kg
Weaning Wt.	328 Kg
Yearling Wt.	520 Kg
Yearling SC	43 cm
Frame	6.0
Aust. Reg. No.	USA17307074

- Without question one the leading curve bending BW to 600D EBV Spread sires available.
- His powerful dam goes back to the calving ease and marbling leader, GAR Objective 2345, a leading donor at Deer Valley Farms.
- Progeny in Australia exhibit tremendous growth and have been highly sought after and topped sales 2018.
- All In daughters have excellent udders and are very feminine.

## 2019 Mid July Angus Breedplan

Trait	CE Dir	CE Dtrs	GL	BWT	200	400	600	MCW	Milk	DTC	SS	DOC	CWT	EMA	RIB	P8	RBY	IMF	ABI	DOM	GRN	GRS
EBV	-2.6	3.4	-5.3	2.7	60	113	137	101	21	-3.8	1.4	-2	77	6.2	-2.2	-3.6	2.0	2.2	\$141	\$136	\$156	\$135
(Acc)	94%	87%	99%	99%	98%	98%	98%	97%	96%	64%	98%	96%	93%	91%	91%	90%	87%	90%				
Perc	86	6	27	15	1	1	3	29	8	60	70	71	5	31	97	99	4	30	8	1	9	5

Deer Valley  
**OLD HICKORY**

Tattoo: 4181 Born: 16/1/2014

Bull code: 7AN440

Sire	Sitz Upward 307R <b>Plattemere Weigh Up K360</b> Barbara of Plattemere 337
Dam	SAV Bismarck 5682 <b>Deer Valley Rita 1126</b> GAR Objective 2345
Actual BW	34 Kg
Weaning Wt.	374 Kg
Yearling Wt.	607 Kg
Yearling SC	36 cm Yearling
Frame	6.1 Yearling
Aust. Reg. No.	USA17873666

- The most impressive son of Weigh Up we have encountered. He's a stout made, sound footed bull with a tremendous hip and rear leg set.
- He exhibits extra length of body and neck extension whilst being soft-middled and bold-ribbed.
- His impressive dam is a member of one of the most successful embryo flushes from the \$300,000 GAR Objective 2345.
- A low BW Weigh Up son with extra growth and impressive end product values.

## 2019 Mid July Angus Breedplan

Trait	CE Dir	CE Dtrs	GL	BWT	200	400	600	MCW	Milk	DTC	SS	DOC	CWT	EMA	RIB	P8	RBY	IMF	ABI	DOM	GRN	GRS
EBV	-0.6	-0.9	-6.2	3.9	60	106	132	98	15	-1.9	2.2	-	77	8.0	-2.7	-4.5	2.9	1.7	\$133	\$132	\$142	\$130
(Acc)	61%	53%	89%	85%	74%	71%	72%	69%	60%	39%	65%	-	64%	60%	63%	60%	57%	60%				
Perc	65	75	16	40	1	2	6	34	52	87	30	-	5	10	99	99	1	50	16	2	21	10



Lawsons **INCREDIBLE** H803

Born: 17/8/2012

Bull code:

INCREDIBLEH803

Sire	Te Mania Bartel B219	Actual BW	35 Kg
	<b>Ayrvale Bartel E7</b>	Weaning Wt.	356 Kg
	Eaglehawk Jedda B32	Yearling Wt.	588 Kg
Dam	Lawsons Dinky-Di Z191	Yearling SC	41 cm
	<b>Lawsons Dinky Di E447</b>	Frame	6.5
	Lawsons Premium Beef B773	Aust. Reg. No.	VLYH803

- Incredible is a proven calving ease son of Bartel E7.
- He is larger framed, longer bodied than your typical calving ease sire.
- Incredible offers excellent structure, feet and legs.
- The complete package of low birth weight, high growth and high carcass merit.

## 2019 Mid July Angus Breedplan

Trait	CE Dir	CE Dtrs	GL	BWT	200	400	600	MCW	Milk	DTC	SS	DOC	CWT	EMA	RIB	P8	RBY	IMF	ABI	DOM	GRN	GRS
EBV	4.1	2.9	-6.7	3.0	56	93	128	80	32	-8.3	2.5	-19	76	8.0	-2	-1.4	1.1	3.4	\$164	\$136	\$189	\$150
(Acc)	90%	80%	99%	98%	98%	98%	98%	95%	94%	62%	97%	92%	88%	88%	89%	87%	83%	86%				
Perc	4	10	12	20	5	15	9	72	1	2	18	99	6	10	95	82	23	4	1	1	1	1

Lawsons **PROSPERITY** H382

Born: 28/6/2012

Bull code:

PROSPERITYH382

Sire	Booroomooka Undertaken Y145	Actual BW	34 Kg
	<b>Rennylea Edmund E11</b>	Yearling Wt.	434 Kg
	Lawsons Henry VIII Y5	Aust. Reg. No.	VLYH382
Dam	SS Objective T510 OT26		
	<b>Lawsons Objective E1025</b>		
	Lawsons Direction W109		

- Prosperity is an excellent choice for a calving ease sire.
- Moderate framed, extra muscle Edmund son with a docile nature.
- Prosperity offers excellent structure and feet and legs.
- Our go to sire for commercial AI programs with balanced EBV's, eye catching progeny that will return a profit on your investment.

## 2019 Mid July Angus Breedplan

Trait	CE Dir	CE Dtrs	GL	BWT	200	400	600	MCW	Milk	DTC	SS	DOC	CWT	EMA	RIB	P8	RBY	IMF	ABI	DOM	GRN	GRS
EBV	3.1	0.7	-7.1	2.2	46	85	114	90	16	-5.8	-0.2	5	63	6.6	-1.5	-3.8	1.9	2.2	\$136	\$123	\$153	\$127
(Acc)	79%	71%	98%	97%	95%	93%	92%	88%	82%	58%	91%	60%	81%	80%	82%	80%	76%	79%				
Perc	12	47	9	9	43	38	31	51	42	22	99	46	40	25	90	99	5	30	13	12	12	15

GAR **RELEVANCE**

Tattoo: 6214

Born: 19/8/2014

Bull code: 7AN442

Sire	CRA Bextor 872	Actual BW	37 Kg
	<b>GAR Prophet</b>	Weaning Wt.	329 Kg
	GAR Objective 1885	Yearling Wt.	549 Kg
Dam	GAR Progress	Yearling SC	36 cm Yearling
	<b>GAR Progress N1401</b>	Frame	4.9 Yearling
	GAR Yield Grade N366	Aust. Reg. No.	USA17965453

- A PROPHET/PROGRESS mating with low Birth Weight and high \$Value Indexes.
- Combines the genetics of the two highest proven marbling bulls in the breed.
- Prophet progeny are in high demand by breeders wanting to improve carcass traits.
- If you're looking to the future, start your quest here with Relevance.
- Impressive marbling data in both the USA (+1.57) and Australia (+4.0) rank Relevance in the top 1% in both countries.

## 2019 Mid July Angus Breedplan

Trait	CE Dir	CE Dtrs	GL	BWT	200	400	600	MCW	Milk	DTC	SS	DOC	CWT	EMA	RIB	P8	RBY	IMF	ABI	DOM	GRN	GRS
EBV	2.0	2.3	-0.3	3.0	51	88	106	60	27	-6	0.2	3	64	8.9	-0.8	-0.4	0.1	4	\$143	\$130	\$163	\$132
(Acc)	69%	55%	84%	88%	82%	81%	79%	78%	76%	48%	75%	63%	77%	74%	76%	70%	70%	73%				
Perc	25	18	96	20	18	28	50	94	1	19	97	54	36	5	75	58	65	1	6	3	6	8

Lawsons **LINKEDIN** L488

Tattoo: L483  
Born: 13/7/2015  
Bull code: LINKEDINL483

Sire	Tuwharetoa Regent D145
	<b>Paringa Judd J5</b> Strathewen Berkley Wilpena F30
Dam	Ayrvale Bartel E7
	<b>Lawsons Bartel E7 H221</b> Lawsons Objective E1166

Actual BW	43 Kg
Weaning Wt.	295 Kg
Yearling Wt.	395 Kg
Yearling SC	44 cm
Frame	6.0
Aust. Reg. No.	VL483

- Lot 1 and high selling bull in Lawsons 2017 Autumn bull sale.
- LinkedIn combines two of Genetics Australia's leading sires in Paringa Judd J5 and Ayrvale Bartel E7.
- Unbelievable good looks combined with breed leading EBV's and \$Value Indexes.
- Excellent feet and legs with Beef Class scores of FC 6, RC 5, FA 6 RA 5, RS 5, RH 5.
- Huge spread from BW to 600D, with breed leading carcass traits.

## 2019 Mid July Angus Breedplan

Trait	CE Dir	CE Dtrs	GL	BWT	200	400	600	MCW	Milk	DTC	SS	DOC	CWT	EMA	RIB	P8	RBY	IMF	ABI	DOM	GRN	GRS
EBV	1.5	1.1	-0.8	3.9	56	99	144	128	27	-6.5	4.1	-6	83	5.9	-0.6	0	0.1	3.2	\$157	\$124	\$182	\$144
(Acc)	72%	52%	98%	97%	93%	86%	84%	78%	67%	46%	75%	79%	74%	64%	67%	65%	60%	63%				
Perc	33	40	93	40	5	6	1	3	1	13	1	83	2	35	70	45	65	7	1	10	1	1

Lawsons **LEO** L488

Tattoo: L488  
Born: 26/7/2015  
Bull code: LEOL488

Sire	GAR Ingenuity
	<b>HPCA Intensity 7102</b> GAR Predestined 287L
Dam	Sydgen Trust 6228
	<b>Lawsons Trust H212</b> Lawsons Dinky-Di F458

Actual BW	47 Kg
Weaning Wt.	285 Kg
Yearling Wt.	379 Kg
Yearling SC	41 cm
Frame	6.0
Aust. Reg. No.	VL488

- Leo was rated by many as the outstanding phenotype sire in Lawsons 2017 Autumn Sale.
- Sired by popular growth and now deceased sire HPCA Intensity 7102.
- Leo was the second-high selling bull in Lawsons 2017 Autumn sale.
- A high growth power sire with a different pedigree of HPCA Intensity x Sydgen Trust.
- Structurally correct and free moving sire. Beef Class scores of FC 6, RC 6, FA 6, RA 6, RS 6, RH 5.

## 2019 Mid July Angus Breedplan

Trait	CE Dir	CE Dtrs	GL	BWT	200	400	600	MCW	Milk	DTC	SS	DOC	CWT	EMA	RIB	P8	RBY	IMF	ABI	DOM	GRN	GRS
EBV	2.5	2.5	-8.4	3.9	60	101	130	100	21	-6.6	1.3	-9	79	8.1	-0.8	-1.5	1.6	2.1	\$151	\$136	\$164	\$144
(Acc)	74%	55%	96%	94%	90%	82%	82%	78%	67%	47%	75%	89%	73%	65%	68%	66%	63%	64%				
Perc	19	15	3	40	1	4	7	31	8	12	75	89	4	9	75	83	10	33	2	1	5	1

GAR **METHOD** 123

Tattoo: 7834  
Born: 17/9/2014  
Bull code: 7AN441

Sire	GAR Progress
	<b>GAR Momentum</b> GAR Big Eye 1770
Dam	MCC Daybreak
	<b>GAR Daybreak 1332</b> GAR 5050 New Design N549

Actual BW	28 Kg
Weaning Wt.	324 Kg
Yearling Wt.	571 Kg
Yearling SC	38 cm
Frame	5.4 Yearling
Aust. Reg. No.	USA18025296

- Method offers incredible opportunity with his combination of Performance, Carcase and Phenotype. Method is the growth son of GAR Momentum breeders are searching for.
- Like his sire, Method offers excellent EMA and %IMF with added growth ranking in the top 5% for all 200, 400 and 600D growth EBV's.
- Proud and eye-catching in person, Method is designed for adding profit in every phase of the industry.

## 2019 Mid July Angus Breedplan

Trait	CE Dir	CE Dtrs	GL	BWT	200	400	600	MCW	Milk	DTC	SS	DOC	CWT	EMA	RIB	P8	RBY	IMF	ABI	DOM	GRN	GRS
EBV	-1.3	0.2	1.1	4.4	62	111	132	98	20	-3.4	-0.5	23	87	13.2	-0.4	-1.9	1.8	2.2	\$143	\$138	\$152	\$139
(Acc)	74%	52%	97%	95%	92%	93%	87%	81%	75%	44%	88%	76%	81%	81%	82%	77%	75%	79%				
Perc	75	57	99	53	1	1	6	34	12	67	99	6	1	1	63	90	6	30	6	1	13	3



Kansas

**ABERDEEN** F84Genetocs  
AUSTRALIA

Tattoo: F84 Born: 13/7/2010

Bull code: NKLF84

Sire	CRA Bextor 872 <b>TC Aberdeen 759</b> TC Blackbird 4034
Dam	SAV Network 4200 <b>Kansas Annie D62</b> Kansas Annie Y71
Actual BW	34 Kg
Current Wt.	1160 Kg
Frame	6.5 Mature
Scrotal Circ.	44 cm Mature
Aust. Reg. No.	NKLF84

- This powerhouse sire is already a trait leader for growth.
- Kansas Annie Y71 was purchased by K.O Angus in 2011 and went on to be a leading donor in the K.O program.
- If you're searching for a sound bull that will add body mass and dimension with excellent feet and legs you should consider Kansas Aberdeen F84.
- Aberdeen F84 dominated the Royal Sydney Show Ring in 2019.

2019 Mid July Angus Breedplan																						
Trait	CE Dir	CE Dtrs	GL	BWT	200	400	600	MCW	Milk	DTC	SS	DOC	CWT	EMA	RIB	P8	RBY	IMF	ABI	DOM	GRN	GRS
EBV	-2.9	-1.1	-0.9	7.9	61	109	150	131	19	-2.2	0.7	-1	72	7.4	-0.3	-1.1	0.2	1.6	\$125	\$110	\$131	\$124
(Acc)	73%	61%	97%	97%	92%	91%	88%	83%	79%	55%	86%	58%	79%	77%	80%	78%	74%	76%				
Perc	88	78	93	98	1	1	1	2	18	84	92	68	13	15	60	75	60	53	30	48	35	20

Cherylton

**STEWIE** D19Genetocs  
AUSTRALIA

Born: 26/7/2008

Bull code: STEWIE D19

Sire	Leachman Right Time <b>Hyline Right Time 338 ET</b> Hyline Pride 265 ET
Dam	N Bar Prime Time D806 <b>Sinclair Lady 2P60 4465 ET</b> Ideal 4465 of 6807 4286
Actual BW	43 Kg
Weaning Wt.	590 Kg
Yearling Wt.	928 Kg
Yearling SC	45 cm
Frame	5.5
Aust. Reg. No.	WLHD19



- At 10 years of age, Stevie continues to match it with the best of the young sires coming into the Angus breed.
- One of the most balanced and reliable sires currently available in Australia.
- Stevie was a standout sire of Cohort 1 of the Angus Young Sire Program.
- A true outcross sire to all mainstream carcase sires, with real carcase data confirming his ability produce high marbling progeny.
- Purchased by Raff Angus in 2014 and set to make a great contribution to this renowned and respected herd.
- Stevie offers added body length, extra width with sound feet and legs.

2019 Mid July Angus Breedplan																						
Trait	CE Dir	CE Dtrs	GL	BWT	200	400	600	MCW	Milk	DTC	SS	DOC	CWT	EMA	RIB	P8	RBY	IMF	ABI	DOM	GRN	GRS
EBV	2.3	2.5	-5.2	3.2	46	92	117	96	20	-5.5	2.2	3	65	2.7	-1.5	1.8	-0.6	3.1	\$137	\$122	\$154	\$128
(Acc)	90%	81%	98%	98%	97%	98%	98%	95%	94%	68%	97%	95%	92%	91%	92%	91%	87%	90%				
Perc	21	15	28	25	43	17	25	38	12	27	30	54	33	86	90	7	88	8	11	13	11	13



**ESTROTECT™**  
BREEDING INDICATOR



# BREEDING SUCCESS

## THE WORLD'S LEADING BREEDING MANAGEMENT INDICATOR NOW FEATURING THE BREEDING BULLSEYE™!

The NEW ESTROTECT™ Breeding Indicator featuring patent pending Breeding Bullseye™ technology makes it easier than ever to identify cows that are in heat, pinpoint timing for AI and Timed AI protocols, as well as confirm successful pregnancies.

According to third-party research, when the new ESTROTECT™ Breeding Bullseye™ is rubbed off by mounting activity, cows are up to three times more likely to conceive. Not only does ESTROTECT™ with the Breeding Bullseye™ indicate when a cow is in heat, it tells you exactly when the animal should be bred to achieve optimal results.

To learn more about the new and improved ESTROTECT™ featuring the Breeding Bullseye™, visit [www.ESTROTECT.com](http://www.ESTROTECT.com)!



**AS GOOD AS A BULL™**

[www.ESTROTECT.com](http://www.ESTROTECT.com)



**MAI** ANIMAL HEALTH

©2018 ESTROTECT. ESTROTECT and As Good As A Bull are trademarks of Rockway, Inc.



# 2019 MERCHANDISE

## Complete DIY AI Kit

Everything you need in one durable stainless steel kitbox fully compartmentalised to keep everything in its place.

- 2.5 Litre AI Lube
- Lube bottle
- Paper towels
- 0.25ml AI Guns x 2
- 0.5ml AI Gun x 1
- FIL Tell Tail Aerosol
- Polysem red gloves
- AI Thaw flask
- Cito thaw monitor
- Thermometer
- Scissors
- AI tweezers
- Kit box
- 50P AI Sheaths x 2

**\$345<sup>00</sup>**

**VALUED AT \$400**

Also available - AI Kit box only, \$150 + GST



**\$14<sup>20</sup>**  
per 500ml can

**Tell Tail  
Aerosol  
cans**

'fluoro tail paint'



## AI Lube

This high quality obstetric lubricant is AI safe and also useful for calving, pregnancy testing etc. It is also excellent value.



5 LITRE

**\$22<sup>50</sup>**

2.5 LITRE

**\$14<sup>00</sup>**

## Polysem gloves

Orange  
25 micron  
**\$20.00**

Red  
30 micron  
**\$24.00**

Yellow  
35 micron  
**\$26.00**



## Alpha sheaths

**\$18**  
per packet  
of 50



**ESTROTECT™**  
BREEDING INDICATOR

## Dairy Mac Superthaw

The Dairy Mac Digital SUPERTHAW™ is designed and manufactured in the UK. It is based on a comprehensive list of 'needs' and 'desires' from our discussions with farmers, AI Technicians and Vets. It is very important that bull semen is thawed consistently at the right temperature. Available with either flip lid or gun warmer.



**\$360<sup>00</sup>**

## CIDR

The original cattle oestrus synchronisation insert

There are many benefits to using synchronising inserts to assist in reproduction, potentially including:

- better fertility - increased conception rates
- tighter calving pattern
- easier cattle management
- reducing the time spent on heat detection
- treatment of anoestrus
- reduced culling of empty cows
- confirmed calving dates, and much more.



## MVE XC20 Signature Tank

The XC20 Signature Series offers the latest technology in farm storage tanks.



Pelton

**WIDELOAD**

(AMF-NHF-CAF-DDF-MAF-OSF) Tattoo: 78B Born 20/2/2014 Bull code: 551AR01515



<b>Sire</b>	UBAR High Capacity 224 <b>SLGN Wideload 920W</b> do-West Persuasion	Mea-
<b>Dam</b>	NEO-SHO Direct Ticket M517 <b>Pelton Miss Jayla 0508 S</b> Peltons Miss Cory 5037N	
<b>Actual BW</b>	38 Kg	
<b>Weaning Wt.</b>	323 Kg	
<b>Yearling Wt.</b>	546 Kg	
<b>Yearling SC</b>	37 cm	
<b>Frame</b>	5.8 Yearling	
<b>Reg. No.</b>	1704763	

- Wideload's popularity is sweeping the breed as one of the unique sires for body mass, substance and style. His semen quality is outstanding, and he works well in both conventional and SexedULTRA 4M!

- Use Wideload for broody, feminine replacement heifers that stand out for fleshing ability, soundness and quiet demeanor.
- With a Marbling EPD in the top 1% and Ribeye and Gridmaster in the top 10%, Wideload brings total outcross genetics for breeders who desire to add quality pounds.

2019 July Red Angus EPDs																	
Trait	HB	GM	CED	BW	WW	YW	MILK	ME	DTRS	HPG	CEM	STAY	MARB	YG	CW	REA	FAT
EBV	162	50	8	-0.8	57	94	23	4	0	11	4	16	0.75	0.1	4	-0.08	0.04
(Acc)			0.47	0.61	0.55	0.55	0.45	0.13		0.25	0.26	0.24	0.4	0.35	0.46	0.44	0.34



Davelle

**COOL BEAU** N51**NEW**Genetocs  
AUSTRALIATattoo: N51 Born 01/08/2017 **Bull code:** Bred and Owned by: Davelle South Devons

\$Profit ABE		\$Profit Index Value			
		<b>\$34,038</b>			
	Value	%Rank	\$Profit ABE as of 1/7/2019		
\$Ranch	\$75.26	1		Value	%Rank
\$Feeder	\$293.50	1	BW	1.7	17
\$Terminal	\$17,367	1	WW	64	1
Feed:Gain	-0.07	10	YW	113	1
Intake	-43.92	39	Milk	36	1
Accuracy	*		SC	1.04	1
C Ease	**		Mat Wt	36	75
Growth	*****		REA	0.99	1
Maternal	*****		IMF	0.79	1
Feed/Carc	****		Carc Wt	841	20
Disposition	*****		BF	0.01	1

- The global leader for \$Profit Index, ranking in the top 1% for 10 indexes/traits.
- Beau is a stand out pure bred South Devon young sire who is impressing everyone that sees him both in the flesh and on paper
- His pedigree is stacked with high \$Profit MJB Cool 548C (\$27,551), BC Progress 315U (\$25,281).

<b>Sire</b>	MJB Swagger 330Z <b>MJB Cool 548C</b> MJB Nikki 8613U
<b>Dam</b>	BC Progress 315U <b>Davelle Progress D'Rose H47</b> Davelle C22 D'Rose E48
<b>Actual BW</b>	38 Kg
<b>Weaning Wt.</b>	340 Kg
<b>Yearling Wt.</b>	626 Kg
<b>Yearling SC</b>	43 cm
<b>Frame</b>	6.0
<b>Aust. Reg. No.</b>	DVPN51

- Beau is a moderate long balanced easy doing, sound footed potent young sire.
- Beau encompasses all of Davelle's breeding objectives of low birth weight, good growth and excellent carcass which in combination propelled Cool Beau to be one of the highest \$Profit Index sires globally.

2019 June South Devon Group Breedplan																		
Trait	GL	BWT	200	400	600	MCW	Milk	SS	CWT	EMA	RIB	P8	RBY	IMF	Vealer Index	SMRKT Index	Export Maternal Index	
EBV	-2.2	-0.2	29	50	55	45	1	2	52	4.5	1.2	1.6	0.4	1.6	\$53	\$77	\$93	
(Acc)	61%	74%	72%	67%	64%	50%	35%	67%	53%	40%	51%	50%	47%	40%	\$18	\$23	\$31	



KCF Bennett  
**ENCORE** Z311

43387256 (HYF DLF IEF) Tattoo: Z311 Born: 21/9/2012

**Bull code: 551HP01609**

<b>Sire</b>	SCHU-LAR 5N of 9L 3008 <b>SCHU-LAR On Target 22S</b> SCHU-LAR 208 of 1H 121
<b>Dam</b>	MSU TCF Revolution 4R <b>KCF Miss Revolution X338</b> JW 718 Victoria 9106
<b>Actual BW</b>	37 Kg
<b>Weaning Wt.</b>	309 Kg
<b>Yearling Wt.</b>	526 Kg
<b>Yearling SC</b>	36.2 cm
<b>Frame</b>	6.1 Yearling
<b>US Reg. No.</b>	43387256
<b>Poll Gene Results</b>	Homozygous Polled
<b>CHB,DLF,HYF,IEF</b>	

- Encore is one of the most popular sires available in the Hereford breed for his remarkable calving ease with tremendous growth and carcass offerings.
- Encore has been used with success on heifers and cows in the NJW and KCF programs to add performance and carcass value in a dense bodied, structurally correct package.
- Encore is a homozygous polled "breed changer" that is proven to take purebred and commercial programs to the forefront of the beef industry.
- Very limited semen available and it will sell out this year.

## 2019 July Hereford Group Breedplan

Trait	CE Dir	CE Dtrs	GL	BWT	200	400	600	MCW	Milk	SS	DTC	CWT	EMA	RIB	P8	RBY	IMF	DOC	SMRKT Index	GRS Fed Index	GRN Fed Index	EU Index
<b>EBV</b>	6.9	3.3	-1	2.4	38	70	90	88	19	3.3	-3.8	68	5.3	-0.1	-1	1.4	0.5	-	\$119	\$114	\$131	\$134
<b>(Acc)</b>	54%	37%	87%	86%	73%	68%	70%	62%	53%	59%	33%	53%	45%	49%	51%	42%	50%		\$87	\$83	\$95	\$97

KCF Bennett  
**HOMELAND** C34

43601153 (AMF-NHF) Tattoo: C34 Born: 29/1/2015

**Bull code: 203HP01605**

<b>Sire</b>	SHF Wonder M326 W178 <b>NJW 73S W18 Hometown 10Y</b> NJW P606 72N Daydream 73S
<b>Dam</b>	Efbee Shular Proficient N093 <b>KCF Miss Proficient A47</b> KCF Miss Revolution Y102
<b>Actual BW</b>	31 Kg
<b>Weaning Wt.</b>	305 Kg
<b>Yearling Wt.</b>	518 Kg
<b>Yearling SC</b>	35 cm
<b>Frame</b>	6.0 Yearling
<b>US Reg. No.</b>	43601153
<b>Poll Gene Results</b>	Homozygous Polled
<b>DLF,HYF,IEF</b>	

- Homeland offers a rare opportunity to accomplish multi-trait improvement in one generation.
- He is dark red, short marked with red eyes and is homozygous polled.
- His Proficient dam is a model cow in the KCF program, his grandmother is a preeminent flush sister to Encore's dam.
- Homeland was the top selling bull at Knoll Crest in 2016 and has seen heavy use in their program.

## 2019 July Hereford Group Breedplan

Trait	CE Dir	CE Dtrs	GL	BWT	200	400	600	MCW	Milk	SS	DTC	CWT	EMA	RIB	P8	RBY	IMF	DOC	SMRKT Index	GRS Fed Index	GRN Fed Index	EU Index
<b>EBV</b>	6	4.8	-0.9	2.8	33	63	86	75	20	2.8	-3.8	64	6	1.5	0.7	0.9	1.3	7	\$126	\$124	\$153	\$141
<b>(Acc)</b>	58%	40%	82%	81%	76%	70%	70%	61%	53%	62%	31%	58%	48%	51%	53%	45%	52%	62%	\$87	\$83	\$95	\$97



NEW

Hunter Lakes

**LION HEART** L110



Tattoo: L110 Born 10/4/2015

**Bull code: LIONHEARTL110**

Owned by: GTL Bowman – Ridgeview Hereford Stud, Rosedale Vic

<b>Sire</b>	Allendale Waterhouse D1 (PP) <b>Days Robin Hood H38 (PP)</b> Allendale Fancy U5 (P)
<b>Dam</b>	South Bukalong Wallace 2 (P) <b>Hunters Lakes Fancy F7 (P)</b> Allendale Fancy D24 (P)
<b>24 Month Wt.</b>	916 Kg
<b>Scrotal</b>	42.4 cm at 24 months
<b>Frame</b>	7.6
<b>Aust. Reg. No.</b>	HLKL110
<b>Poll Gene Results</b>	Homozygous Polled
<b>DLF,HYF,IEF</b>	

- Reserve Senior Intermediate Champion at the 2017 Dubbo National Poll Hereford Show and Sale.
- High selling bull in the same sale selling for sale top price of \$65,000.
- Lion Heart combines Performance, Phenotype and Pedigree.
- A pedigree that combines the iconic Allendale Fancy cow family.
- Homozygous Polled.

2019 July Hereford Group Breedplan

Trait	CE Dir	CE Dtrs	GL	BWT	200	400	600	MCW	Milk	SS	DTC	CWT	EMA	RIB	P8	RBY	IMF	DOC	SMRKT Index	GRS Fed Index	GRN Fed Index	EU Index
EBV	2.7	7.2	-3.6	4.4	39	63	88	78	16	2.6	-3.6	58	4.7	0.9	2.6	0.8	1	-	\$124	\$122	\$142	\$136
(Acc)	59%	49%	82%	76%	71%	70%	72%	66%	60%	75%	43%	63%	58%	60%	63%	55%	61%	-	\$87	\$83	\$95	\$97

Injemira

**REDFORD** J084



(HYF DLF IEF) Tattoo: J084 Born: 25/4/2013

**Bull code: IHSJ084**

Bred by: Injemira Herefords Owned by: Gary McCainch, Vic.

<b>Sire</b>	Koanui Rocket 0219 <b>Redgate Redford D935</b> Redgate Royal B81
<b>Dam</b>	Allendale National W168 <b>SAV Injemira Happy Day G019</b> Injemira Happy Day D053
<b>Actual BW</b>	28 Kg
<b>Weaning Wt.</b>	284 Kg
<b>Yearling Wt.</b>	412 Kg
<b>Yearling SC</b>	41 cm – 17 Months
<b>Frame</b>	6.0
<b>Horn</b>	Polled
<b>Poll Gene Results</b>	PP 98% Homozygous
<b>Eye Pigment %</b>	Left = 100 Right =100
<b>Aust. Reg. No.</b>	IHSJ084

- Homozygous Polled.
- High selling sire in the 2015 Injemira Herefords Sale.
- Dam's 5 ET brothers sold for an average of \$18,000 in the 2013 Injemira sale.
- Awesome Phenotype, backed by a strong pedigree and breed leading EBVs.
- Improves calving ease, growth carcase traits and maintain superior type.

2019 July Hereford Group Breedplan

Trait	CE Dir	CE Dtrs	GL	BWT	200	400	600	MCW	Milk	SS	DTC	CWT	EMA	RIB	P8	RBY	IMF	DOC	SMRKT Index	GRS Fed Index	GRN Fed Index	EU Index
EBV	4.3	5	-3.8	4.6	48	78	112	108	23	3.1	-0.9	81	5.2	0.5	0.7	1.9	0.8	5	\$135	\$128	\$143	\$144
(Acc)	66%	51%	89%	91%	85%	85%	84%	74%	64%	88%	48%	74%	66%	68%	73%	65%	69%	40%	\$87	\$83	\$95	\$97

H FHF

**ADVANCE** 628 ET

43601153 (AMF-NHF) Tattoo: 628 Born 20/2/2016

**Bull code: 551HH01704**

<b>Sire</b>	HH Advance 1013Y ET <b>HH Advance 4075B ET</b> HH Miss Advance 0121
<b>Dam</b>	CJH Harland 408 <b>FHF 408 Rita 21W</b> FHF 45P Rita 101T
<b>Actual BW</b>	41 Kg
<b>Weaning Wt.</b>	300 Kg
<b>Yearling Wt.</b>	627 Kg
<b>Yearling SC</b>	36.1 cm
<b>Frame</b>	6.1
<b>US Reg. No.</b>	43720817
<b>Horned</b>	
<b>DLF,HYF,IEF</b>	

- Powerfully built and red to the ground, Advance 628 was a member of Hoffman's 2017 NWSS Champion Carload and went on to be the top selling bull in their 2017 sale.
- Advance 628 offers one of the elite pedigrees available in the Hereford breed.
- A full sister to 628 commanded \$100,000 in Hoffman's 2017 female sale and Nate Fredrickson proclaims his donor dam to be one of the best females ever in his program. 628 is available in conventional and SexedULTRA 4M semen to advance the maternal, genetic and physical quality of your breeding program.

2019 July Hereford EPDs																				
Trait	CE Dir	BWT	WWT	YWT	DMI	SC	SCF	MILK	M&G	CEM	MCW	US	TS	CWT	FAT	REA	MARB	BMI	BII	CHB
<b>EPD</b>	5.7	2.5	68	106	0.9	0.7	14.4	20	54	2.6	139	1.3	1.3	95	0.048	0.69	0.24	349	440	125
<b>ACC</b>	39%	75%	64%	60%	19%	32%	15%	21%		22%	33%	46%	46%	21%	27%	21%	22%	-	-	-

Efbeef X651

**TESTED** A250

Tattoo: A250 Born 13/3/2013

**Bull code: 7HP114**

<b>Sire</b>	EFBeef Foremost <b>EFBeef TFL U208 Tested X651 ET</b> EFBeef P606 Mabel R415
<b>Dam</b>	R7R Prime Cut 6378 ET <b>EFBeef 6378 Kate W484</b> EFBeef G825 Kate R428
<b>Actual BW</b>	33 Kg
<b>Weaning Wt.</b>	241 Kg
<b>Yearling Wt.</b>	421 Kg
<b>Yearling SC</b>	37 cm
<b>Frame</b>	NA
<b>US Reg. No.</b>	43440096
<b>Poll Gene Results</b>	Homozygous Polled
<b>DLF,HYF,IEF</b>	

- Homozygous Polled.
- One of the most complete, high accuracy sires in the breed.
- Elite calving ease, breed leading performance, moderate size, maternal ability and marbling.
- Rated as an udder improving sire in the USA.
- Dark red, heavily pigmented, great disposition and good footed.

2019 July Hereford Group Breedplan																						
Trait	CE Dir	CE Dtrs	GL	BWT	200	400	600	MCW	Milk	SS	DTC	CWT	EMA	RIB	P8	RBY	IMF	DOC	SMRKT Index	GRS Fed Index	GRN Fed Index	EU Index
<b>EBV</b>	11.5	6.8	-1.4	-0.7	29	50	58	25	17	3.2	-4.1	54	3.7	2.2	2.1	-0.1	1.4	-	\$112	\$115	\$144	\$126
<b>(Acc)</b>	52%	33%	87%	87%	79%	68%	69%	56%	38%	51%	27%	52%	36%	41%	43%	34%	41%	-	\$87	\$83	\$95	\$97



**Genet<sup>cs</sup>**  
AUSTRALIA  
Breeding better Australian herds

# GET THE MOST OUT OF YOUR BEST BULLS

• Insurance • Quality Certified • Export Opportunities • First Class Service

Situated in Bacchus Marsh, Victoria, Genetics Australia is an ideal location for consigning your bulls for licensed semen collection.

When seeking an organisation to collect, process, ship or store cattle semen, count on the professional, knowledgeable staff at Genetics Australia to provide you with first class service. We can perform the necessary testing required to enable semen to be exported to most countries.



Freecall: 1800 039 047

[www.genaust.com.au](http://www.genaust.com.au)

**Genet<sup>cs</sup>** AUSTRALIA  
Breeding better Australian herds

Cadfor  
**GENESIS** G141 (PB)

**Genet<sup>cs</sup>**  
AUSTRALIA



HR1 G141 Born: 21/8/2011 Colour: Silver Genetic Status: AMU, NHU, CAF

Bull code: GENESIS G141

Sire	Willalooka Unity U99 (PB) <b>Willalooka Arthur A598 (PB)</b> Willalooka V813 (PB)
Dam	Lindsay Starbright S117 (PB) <b>Wallawong Dawn 26th (PB)</b> Wallawong Daen 2nd (PB)

- Genesis offers breed leading calving ease, low birth weight combined with excellent growth and high EMA sire.
- Genesis is sired by the breed leading growth and marbling sire Willalooka Arthur and bred from a beautiful Starbright daughter who has an excellent udder.
- Genesis full sisters are model cows, with great reports from the UK and New Zealand.
- A free moving sire who has very sound feet and leg structure

## 2019 June Murray Grey Group Breedplan

Trait	CE Dir	CE Dtr	GL	BW	200D	400D	600D	MCW	Milk	SC	DC	CW	EMA	Rib	Rmp	RBY%	IMF%	VTI	SI	EU HSI
EBV	1.9	4.5	-2.2	0.7	23	32	56	53	4	-0.1	-0.6	40	2.5	0.1	0.3	1	0.4	\$46	\$44	\$66
Acc	63%	51%	81%	89%	84%	84%	80%	69%	63%	76%	42%	73%	63%	75%	74%	70%	66%			

# WR FOREMAN



FR 67 885 072 Colour: White Born: 11/12/2013

**Bull code: 551CH01502**

**Sire**

CMF 192 Wrangler 256  
**WR Wrangler W601**  
WR Miss Princess T629

**Dam**

LT Ledger 0332 P  
**WR Legend B612**  
WR Miss Silver Y601

- Foreman is the homozygous polled product of a proven mating designed for multi-trait excellence.
- Use him for superior calving ease with no sacrifices in quality.
- Foreman defines performance excellence with contemporary group ratios of 71, 113 and 111 for birth weight, weaning weight and yearling weight, respectively.
- He is big gauged individual with extra depth in his heart and forerib.
- Sexed male and female semen available.

## 2019 June Charolais EPDs

Trait	CE	BW	WW	YW	MILK	MCE	TM	SC	CW	REA	FAT	MARB	TSI
EPD	12.6	-3.3	37	75	9	7.3	27	1.4	21	0.73	0.032	0.13	223.9
ACC	42%	55%	43%	34%	25%	22%	31%	23%	21%	21%	18%	18%	

# Paringa HARVEY H338



TOL H338E Colour: White Born: 11/8/2012

**Bull code: HARVEYH338**

**Sire**

SS Montana Silver  
**NWMSU Doc Silver 362 PLD (P)**  
NWMSU Dolores ET 0035

**Dam**

LT Bluegrass 4017 P  
**Paringa Bluegrass D140 (P)**  
Fernvale Zhir

**Actual BW**

45 Kg

**Yearling Wt.**

518 Kg

**Yearling SC**

40 cm

**Aust. Reg. No.**

TOL H338E

- #1 Indexing sire in the 2014 Paringa Livestock Charolais sale.
- Harvey offers real curve bending genetics, +11.7 CE Dir, -1.9 BW without sacrificing growth.
- An outstanding free moving sire with sound feet and legs.
- Harvey's maternal sisters and dam continue to rise to the top of the Paringa herd.
- Your first choice for a calving ease specialist that offers exceptional muscle and volume.

## 2019 June Australasian Charolais Group Breedplan

Trait	CE DIR	CE DTR	GL	BW	200D	400D	600D	MCW	Milk	SC	CW	EMA	Rib	Rmp	RBY%	IMF%	Dom Index	Export Index	Nth Term Index
EBV	11.7	9.1	-5.8	-1.9	13	32	33	19	14	2	22	2.5	1.2	2	-0.9	1.9	\$69	\$88	\$31
(Acc)	70%	58%	91%	91%	87%	88%	85%	80%	72%	88%	77%	69%	78%	77%	73%	69%	\$25	\$34	\$18



1GD  
**FIRST**

FR7613879841  
Colour: White  
Born: 29/10/2010  
Bull code: GDFIRST

<b>Sire</b>	Igloo.Mic <b>Sylvaner</b> Jupe
<b>Dam</b>	Pinay <b>Aneth</b> Uracile

- Outstanding heifer sire with a +10.2 CE Dir EBV
- First sons have excellent conformation and enormous growth potential.
- His daughters are very functional and have excellent maternal ability.
- Recommended to use on daughters of Bastion, Banco, Toulon, Suedois, Artios and Carbar P.

## 2019 June Australasian Charolais Group Breedplan

Trait	CE DIR	CE DTR	GL	BWT	200D	400D	600D	MCW	Milk	SS	CWT	EMA	Rib	P8	RBY	IMF
EBV	10.2	5.5	-8	-1.5	15	28	31	33	3	0.8	28	-	-	-	-	-
(Acc)	46%	31%	72%	70%	54%	48%	48%	46%	35%	29%	33%	-	-	-	-	-

1GD  
**ISMAEL** PP

FR 67 885 072  
Born: 19/10/2013  
Bull code: GDISMAEL

<b>Sire</b>	Cabar P <b>Forgeot P</b> Sauterelle
<b>Dam</b>	Cray P <b>Florence</b> Biche

- Ismael PP sires progeny with exceptional muscle.
- A sire suited for cows that offers the best of maternal and polled genetics with excellent phenotype.
- Ismael PP daughters exhibit excellent maternal qualities.
- Recommended to use on daughters of Suedois, Savigneux, Toledo, Ulrich, Unanime and Uzelier.

## 2019 June Australasian Charolais Group Breedplan

Trait	CE DIR	CE DTR	GL	BWT	200D	400D	600D	MCW	Milk	SS	CWT	EMA	Rib	P8	RBY	IMF
EBV	-1.1	2	-1.9	0.6	11	21	24	30	1	-	20	-	-	-	-	-
(Acc)	49%	26%	79%	78%	58%	49%	50%	48%	27%	-	28%	-	-	-	-	-

1GD  
**ISIDOR** PP

FR 67 885 072  
Colour: White  
Born: 11/12/2013  
Bull code: GDISIDOR

<b>Sire</b>	Cabar P <b>Forgeot P</b> Sauterelle
<b>Dam</b>	Virgil P <b>Derive</b> Routine

- Isidor PP highly recommended for heifers.
- His daughters are very functional and have excellent udders and teats.
- Isidor PP daughters exhibit excellent maternal qualities.
- Recommended to use on daughters of Sidney, Urfe, Ternois, Voimos, Ulysse, Vittoz.

## 2019 June Australasian Charolais Group Breedplan

Trait	CE DIR	CE DTR	GL	BWT	200D	400D	600D	MCW	Milk	SS	CWT	EMA	Rib	P8	RBY	IMF
EBV	-9.6	2.8	-0.3	2.1	13	24	31	46	3	-0.4	22	-	-	-	-	-
(Acc)	38%	26%	76%	48%	34%	32%	33%	32%	27%	26%	26%	-	-	-	-	-

NEW

## Woonallee NAPLES N78 (P)



Tattoo: N78  
Born 26/3/2017  
Bull code:  
Bred by:  
Woonallee  
Simmentals,  
Sth Aust

Sire	Wai-iti High Riser <b>Glen Anthony Y-Arta AY02 (P)</b> Willowbrook Ursulina AU18	Reg Grade	Purebred
		Horn	Polled
Dam	Woonallee Dimension (P) <b>Woonallee Rowena L249 (P)</b> Woonallee Rowena D57	Eye Pigment	100/100
		Colour	Red
		Frame	6.0
		Aust. Reg. No.	WEEP078

- Elite Calving Ease sire combining short gestation length and low birth weight.
- Excellent choice for heifers.
- Excellent docility.
- Very good feet and leg structure.
- Homozygous Polled.

### 2019 July Simmental Trans Tasman Group Breedplan

Trait	CE Dir	CE Dtr	GL	BW	200D	400D	600D	MCW	Milk	SS	DTC	CWT	EMA	Rib	PB	RBY	IMF	DMI	EMI	NTI	VTI
EPD	12.3	10.9	-3.4	-0.5	11	20	28	26	14	-0.2	-3.8	13	-0.6	1.8	2.4	-1.3	0.5	\$56	\$78	\$28	\$36
Acc	50%	45%	73%	72%	67%	70%	72%	65%	52%	71%	30%	59%	52%	55%	54%	53%	47%	\$36	\$43	\$22	\$32

NEW

## Sylvandale TYSON



Tattoo: N003  
Born 01/04/2017  
Bull code:  
Bred by:  
Sylvandale  
Simmentals

Sire	Ellendale K57 Red Power Drive (P) <b>Sylvandale Tyson H642</b> Sylvandale Karen C070	Reg Grade	Purebred
		Horn	Horned
Dam	Tangara Tyson Z408 <b>Sylvandale Highlight C048</b> Brewers Highlight 162	Colour	Red
		Frame	6.5
		Aust. Reg. No.	SVDPN003

- Calving Ease Sire.
- Short gestation Length.
- Low Birth Weight with balanced breeding values.
- Selected as one of the top young bulls from the Sylvandale breeding program.

### 2019 July Simmental Trans Tasman Group Breedplan

Trait	CE Dir	CE Dtr	GL	BW	200D	400D	600D	MCW	Milk	SS	DTC	CWT	EMA	Rib	PB	RBY	IMF	DMI	EMI	NTI	VTI
EPD	7.1	2.7	-2.3	0	16	28	34	42	7	-	-	23	2.7	0.6	0.6	0.4	0.0	\$44	\$55	\$27	\$40
Acc	27%	28%	34%	62%	55%	58%	49%	37%	29%	-	-	40%	38%	34%	34%	37%	25%	\$36	\$43	\$22	\$32

NEW

## Willandra JERRY



Tattoo: J044  
Born 7/5/2013  
Bull code:  
Bred by:  
Willandra  
Simmentals

Sire	Piper WWW Dot Com <b>Willandra Commando</b> Quainding Ingrid W17	Reg Grade	Purebred
		Horn	Horned
Dam	Woonallee Brigadier <b>Willandra Olive E147</b> Willandra Olive A49	Colour	Red
		Frame	6.5
		Aust. Reg. No.	AJYP044

- Jerry topped the 2015 Willandra Simmentals Sale, selling to Woonallee Simmentals and Bullock Hills Simmentals.
- A sire that combines awesome phenotype and performance in the one package.
- Jerry progeny have been highly sought after in numerous bull sales.
- The sire to use if you are looking for a stylish sire that will add kilograms to your calf crop.

### 2019 July Simmental Trans Tasman Group Breedplan

Trait	CE Dir	CE Dtr	GL	BW	200D	400D	600D	MCW	Milk	SS	DTC	CWT	EMA	Rib	PB	RBY	IMF	DMI	EMI	NTI	VTI
EPD	-0.7	0.9	-0.2	2	33	49	68	60	5	1.9	-9	41	2.9	1.2	1.6	0.8	-0.1	\$70	\$100	\$41	\$56
Acc	66%	60%	55%	92%	88%	88%	86%	77%	62%	73%	39%	74%	62%	65%	64%	63%	48%	\$36	\$43	\$22	\$32



Blue Spark

**CALVE EASY** J16PGenet<sup>cs</sup>  
AUSTRALIA

Tattoo: J16 Born 11/10/2013

Bull code: CALVEEASYJ16

<b>Sire</b>	Codiak Crikey GNK 13u (P) (Speckled) <b>Blue Spark Crikey F16 (ET)(P) (Speckled)</b> Wildwood Kara 4K (Speckled)
<b>Dam</b>	River Hill Traffic Jam 26T (P) (Speckled) <b>Blue Spark TJ Rachel F5 (ET) (P) (White)</b> Prairie Hill Rachel 88R (Speckled)
<b>Actual BW</b>	31 Kg
<b>Frame</b>	6.0
<b>Reg. No.</b>	BSP J16
<b>Colour</b>	White

- Calve Easy was a high demand sire in 2018.
- Moderate Framed easy doing sire.
- Progeny in the Blue Spark herd and commercial herds born unassisted.
- J16's grandam Wildwood Kara 4K has 77 progeny recorded in three countries.
- His MGS River Hill Traffic Jam 26T has over 300 progeny recorded is a trait leader for all growth traits

## 2019 July Speckle Park Group Breedplan

Trait	GL	BWT	200	400	600	MCW	Milk	SS	CWT	EMA	RIB	PB	RBY%	IMF
EPD	-0.1	1.1	11	17	21	19	3	0.1	13	0.5	0.1	0.1	-0.1	0.2
ACC	36%	55%	49%	45%	46%	37%	28%	29%	35%	25%	32%	32%	30%	27%

NEW

The Points

**STORM** P3 (AI)(ET)Genet<sup>cs</sup>  
AUSTRALIA

Tattoo: P3 Born 7/3/2018

Bull code: STORMP3

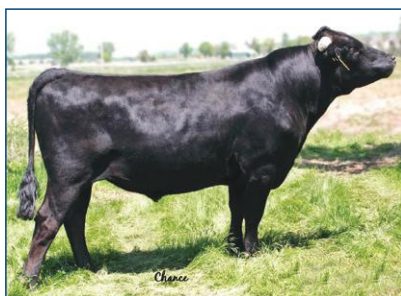
Breeder: Mount Eccles Speckles, Vic. Owners: IJ &amp; KR McKie, Vic

<b>Sire</b>	Legacy Unrivaled 12U <b>Codiak Amigo GNK 65Y (P) (White)</b> Codiak GNK 24T (P)
<b>Dam</b>	Codiak Crikey GNK 13U (P) <b>Waratah Melisa G34</b> Codiak Melisa RKW 64M
<b>Horn</b>	Homozygous Polled
<b>Colour</b>	Speckled
<b>Frame</b>	5.5 Yearling
<b>Genetic Test</b>	RGF, NT821F
<b>Reg. No.</b>	PTS P3

- A new young sire joining our team in 2019 from the Mt Eccles Speckles Stud.
- Storm is a young sire packed with muscle and a stylish phenotype.
- Extremely gentle natured and docile and Homozygous Polled.
- Storms excellent feet and legs make him a free moving sire.
- Sired by the popular Codiak Amigo GNK 65Y and his dam Waratah Melisa G34 has been a prolific donor in the Waratah and Mt Eccles breeding programs.

## 2019 July Speckle Park Group Breedplan

Trait	GL	BWT	200	400	600	MCW	Milk	SS	CWT	EMA	RIB	PB	RBY%	IMF
EPD	0.5	0.9	5	9	12	12	-	0.2	6	-	0.1	0.1	-	-
ACC	38%	62%	50%	45%	47%	36%	-	28%	30%	-	25%	25%	-	-

**CHR Hirashige**  
**TAYASU 533**


Aust. Reg. USAFB13499  
 Tattoo: 533  
 Born 15/11/2011  
 Bull code: 151KB00002

Sire

Dai 20 Hirashige 287  
**Hirashige Tayasu J2351**  
 Dai 5 Yuruhime

Dam

World K's Takazakura  
**Suzutaka 2**  
 World K's Suzutani

- Australian data indicates added growth.
- 533 is a muscular bull out of the Kedaka line and should deliver good growth and a larger frame.
- His sire is a trait leader for growth, and 80% of his steer offspring graded A5 for marbling, the highest in Japan.

**2019 July Wagyu Group Breedplan**

Trait	GL	BW	200D	400D	600D	MCW	Milk	SC	Cwt	EMA	Rmp	RBV%	Marble Score	Marble Fineness	TCI
EBV	1.7	2.3	15	19	24	34	-1	0.6	14	1.1	-3.7	1.4	0.3	0.06	\$61
Acc	60%	63%	63%	62%	62%	60%	60%	59%	60%	58%	58%	56%	58%	56%	

**CHR**  
**SHIGESHIGETANI 542**


Aust. Reg. USAFB14299  
 Tattoo: 542  
 Born 24/2/2012  
 Bull code: 151KB00004

Sire

World K's Haruki 2  
**World K's Shigesigetani**  
 World K's Suzutani

Dam

World K's Michifuku  
**CHR Ms Michifuku 2**  
 CHR Ms Fukutsuru 193R

- 542's sire combines potent marbling with size, growth and tremendous length.
- His maternal grandsire is Michifuku, who ranks high for EMA with a high accuracy of 97%

**2019 July Wagyu Group Breedplan**

Trait	GL	BW	200D	400D	600D	MCW	Milk	SC	Cwt	EMA	Rmp	RBV%	Marble Score	Marble Fineness	TCI
EBV	-1.8	-2.8	-2	-1	-10	-3	-6	-1.2	-3	1.2	0	-0.1	0.9	0.18	\$104
Acc	60%	66%	66%	65%	64%	57%	57%	54%	59%	52%	53%	46%	55%	52%	

**Kuro Kin**  
**DM 100/5 (AI) (ET) (TW)**


(B3FU, CHSFU, CL16FU,  
 F11 25%)  
 Born: 31/8/2006  
 Grade:  
 Fullblood  
 100% Wagyu  
 Bull code:  
 KKDM105

Sire

Michifuku (IMP USA)  
**Kanadagene 100 (IMP CAN) (AI) (ET)**  
 Pedfa 1617 Suzutani 976

Dam

Itoshigenami (IMP USA)  
**Kuro Kin Hikihome 32 (AI) (ET)**  
 Kuo Kin Hikihome 2 (AI) (ET)

- Marble Score EBV rank in the top 20% of the breed.
- Top 1% in the breed for F1 Terminal Index and Self Replacing Indexes.
- Pedigree combines the best of Shimane and Tajima bloodlines.
- Perfect choice for seedstock and commercial producers.

**2019 July Wagyu Group Breedplan**

Trait	GL	BW	200D	400D	600D	MCW	Milk	SC	Cwt	EMA	Rmp	RBV%	Marble Score	Marble Fineness	TCI
EBV	0.7	0	6	10	13	21	0	-0.7	12	2	0.5	-0.1	1	0.18	\$121
Acc	61%	68%	71%	72%	78%	69%	65%	71%	69%	61%	63%	58%	61%	58%	



MC



# SOMETHING SPECIAL 889Y2



R10203255 Tattoo: 889Y2 Born: 2/14/2011

Bull code: 203BN01362

<b>Sire</b>	MC Jethro 00S3 <b>MC Something Special 129W14</b> MC Ms Lead Gun 129T12
<b>Dam</b>	MC Real Deal 541R3 <b>BWCC Ms Real Deal 889W8</b> MC Ms Extravagant 889P4
<b>Actual BW</b>	34 Kg
<b>Aust. Reg. No.</b>	R10203255

- Ideal daughter-maker in a calving ease package! Recommended for heifers and cows.
- 889Y2 is a "no holes" bull that excels for carcass merit, ranking in the Top 10% of the breed for REA and Top 15% for IMF.
- Backed by a powerful maternal pedigree, the 889 cow family had 11 bulls ratio from 104 to 122 for ADG in the 2013 Genetic Development Center Bull Test in a stout contemporary group of 115 Brangus bulls.
- 889Y2 has displayed high fertility with large fixed-time AI breedings, achieving over 70% conception in Brazil.

## 2019 July Brangus EPDs

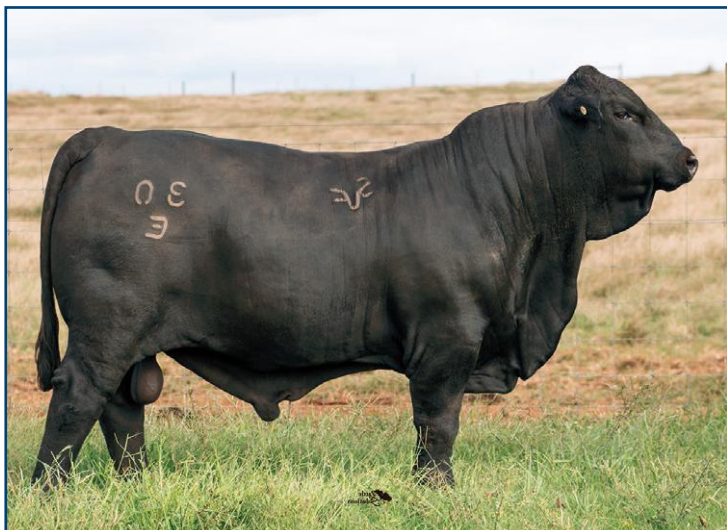
Trait	CED	BW	WW	YW	MILK	TM	SC	CEM	REA	IMF	FAT
EBV	6	-0.1	31	75	15	31	0.6	3	0.7	0.21	-0.01
Acc	0.61	0.75	0.62	0.48	0.41		0.47	0.42	0.6	0.21	0.58

T3

NEW



# BROADWAY 30E



Tattoo: 30E Born 4/9/2017

Bull code: 551BN01507

<b>Sire</b>	New Vision of Salcoa <b>Hollywood of Salcoa 23A53</b> Ms SVF Patton 23Y66
<b>Dam</b>	Atlanta of Salcoa 488Z <b>Ms Salcoa Atlanta 30B5</b> Ms Brinks Unitas 30T94
<b>Actual BW</b>	34 Kg
<b>Weaning Wt.</b>	378 Kg
<b>Yearling Wt.</b>	536 Kg
<b>Yearling SC</b>	38.8 cm
<b>Frame</b>	6.2 Yearling
<b>Aust. Reg. No.</b>	IBBA R10367402

- Broadway offers a unique tandem of phenotype and numerical superiority, providing nine EPD traits in the top third of the breed. As the top seller in the 2018 Salcoa Valley Farms sale, Broadway was appreciated by many progressive breeders as one of the special young herd sire prospects in the Brangus population.
- The maternal quality behind Broadway is incredible. His dam, grandam and maternal sisters have topped sales and they embody the look of a Brangus female with pretty udders, good feet and built-in longevity.
- Sexed semen available.

## 2019 July Brangus EPDs

Trait	CED	BW	WW	YW	MILK	TM	SC	CEM	REA	IMF	FAT
EBV	4	1.1	35	66	6	23	0.7	4	0.58	0.34	-0.05
Acc	0.43	0.56	0.46	0.33	0.31		0.37	0.33	0.42	0.34	0.4

## ANGUS SIREs

CAB: Meets the criteria for Certified Angus Beef's (CAB) Targeting the Brand.

CAF: Has been tested "Free" of the gene for Contractural Arachnodactyly.

AMF: Has been tested "Free" of the gene for Arthrogryposis Multiplex.

NHF: Has been tested "Free" of the gene for Neuropathic Hydrocephalus.

## HEREFORD SIREs

DLF: Has been tested "Free" of the gene for the Dilutor genetic abnormality.

IEF: Has been tested "Free" of the gene for the Idiopathic Epilepsy genetic abnormality.

HYF: Has been tested "Free" of the gene for the Hypotrichosis genetic abnormality.

## RED ANGUS SIREs

MAF: Has been tested "Free" of the gene for Alpha-Mannosidosis.

OSF: Has been tested "Free" of the gene for Osteopetrosis.

## PERFORMANCE DATA

BIRTH WT. (BW): The weight of a calf taken within 24 hours after birth.

ADJUSTED WEANING WEIGHT (WW): An unshrunk, off-the-cow weight adjusted to 205 days of age and to a mature-dam age equivalence.

ADJUSTED YEARLING WEIGHT (YW): An unshrunk weight adjusted to 365 days of age.

SCROTAL CIRCUMFERENCE: A measure of testes size obtained by measuring the distance around the testicles in the scrotum with a circular tape. Related to semen-producing capacity and age at puberty of female sibs and progeny.

FRAME SCORE: A score based on subjective evaluation of height or actual measurement of hip height. This score is related to slaughter weights at which cattle should attain a given quality grade or attain a given amount of fat thickness.

HETEROZYGOUS: Genes of a specific pair (alleles) are different in an individual (e.g., Aa).

HOMOZYGOUS: Genes of a specific pair (alleles) are alike in an individual (e.g., AA or aa).

POLLED: Naturally hornless cattle. Having no horns or scurs.

POLLED/SCURRED: Individuals who are polled with scurs.

HOMOZYGOUS POLLED: Bulls which have a 99.9% probability of being homozygous polled, having been test mated to horned or heterozygous polled cows. You should expect these bulls to sire all polled calves.

HOMOZYGOUS BLACK: These bulls have a 99.9% probability of being homozygous black, having been test mated to red and heterozygous black cows. You should expect these bulls to sire black calves when mated to red or black cows.

NON-DILUTER: These cattle do not carry the dilution gene. The dilution gene causes black coat color to be gray and red coat color to be yellow.

PAP (Pulmonary Arterial Pressure) SCORE: A prediction of an animal's welfare at high altitudes and susceptible to High Altitude Disease (HAD), also known as Brisket Disease. Scores under 45 are favorable.

## SIRE EVALUATION DATA

EXPECTED PROGENY DIFFERENCE (EPD): The difference in performance to be expected from future progeny of a sire, compared with that expected from future progeny of the average bull in the same test. EPD is an estimate based on progeny testing and is equal to one-half the estimate of breeding value obtainable from the progeny test records. EPDs for growth traits are generally expressed in pounds, either as a plus difference or minimum difference from the population average. EPDs are generally reported in the units of measure of the trait, (e.g., pounds, cm, cm<sup>2</sup>, percent, etc.)

ACCURACY (ACC): The reliability that can be placed on the expected progeny difference (EPD). An accuracy of close to 1.0 indicates higher reliability.

BIRTH WEIGHT (BW): Calf weight at birth adjusted to a mature dam equivalent. Expected progeny performance is reported in pounds. The EPD value predicts the difference in average birth weight of a bull's calves compared to

calves of all other bulls evaluated. A positive value indicates heavier-than-average birth weights while a negative value (-) indicates lighter-than-average birth weights.

CALVING EASE (DIRECT): The ease with which a bull's calves are born to first-calf heifers. A first-calf heifer is defined as a female calving for the first time at 33 months of age or less. Expected progeny differences are reported as deviations in the percent unassisted births. When comparing calving ease EPDs of two sires, the larger EPD indicates a higher percent of unassisted births for calves sired by this bull.

WEANING WEIGHT EPD (WW): A sire's expected progeny difference (lb.) for 205-day, mature dam equivalent weaning weight. A sire's weaning weight EPD is an indication of growth to weaning. It does not indicate milk production.

YEARLING WEIGHT EPD (YW): A sire's expected progeny difference (lb.) for 365-day, mature dam equivalent yearling weight.

RADG EPD – RADG allows producers to characterize Angus genetics that will perform more efficiently in a post weaning feeding environment. It provides a balanced approach to identify cattle that, with a given quantity of feed, will still perform at industry acceptable levels. RADG is presented in pounds (lb.) per day, with a higher value being more favorable.

YEARLING HEIGHT (YH): A predictor, expressed in inches, of a sire's ability to transmit yearling height.

SCROTAL CIRCUMFERENCE EPD (SC): A predictor, expressed in centimeters, of the difference in transmitting ability for scrotal size.

DOCILITY (DOC): A tool to increase the probability of docile calves from one sire compared to calves of other sires. The EPD is expressed as a genetic difference in percentage units, with a higher value being more favorable for calmer temperament.

## DAUGHTER EVALUATION

MATERNAL MILK (MILK): The maternal ability of a bull's daughters. Expected progeny performance is expressed in pounds of calf weaning weight. The EPD value predicts the difference (due to maternal ability) in average 205-day weight of a bull's daughters' calves compared to calves of all other bulls evaluated.

MATERNAL WEANING WEIGHT (MWW): The weaning weight of a bull's daughters' calves. Expected progeny performance is reported in pounds. The EPD value predicts the difference in average 205-day weight of bull's daughters' calves compared to calves from daughters of all other bulls evaluated. The evaluation reflects both the maternal ability of a bull's daughters and the growth potential of their calves.

MATURE DAUGHTER WEIGHT EPD (MW): A predictor of the difference in mature size of a sire's daughters expressed in pounds.

MATURE DAUGHTER HEIGHT EPD (MH): A predictor of the difference in mature daughter height of a sire's daughters expressed in inches.

MATERNAL CALVING EASE (MCE): The ease with which a sire's daughters calve as first-calf heifers. Expected progeny differences are reported as deviations in the percent unassisted births.

HEIFER PREGNANCY (HPG): A tool to increase the chance of a sire's daughters becoming pregnant as heifers during a normal breeding season. The EPD is expressed as a genetic difference in percentage units, with a higher value being more favorable.

STAYABILITY (STAY): The expressed difference in probability of daughters staying in the herd to at least six years of age. Since cows are usually only culled for being open before six years, the EPD is primarily a measure of sustained fertility in female offspring.

## CARCASE EVALUATION

CARCASE WEIGHT EPD (CW): A predictor, expressed in pounds, of the differences in hot carcass weight of a sire's progeny at a given end point.

MARBLING EPD (MARB): An expression, as a fraction, of the differences in a subjective USDA marbling score of a sire's progeny at a given end point.

RIBEYE AREA EPD (REA): A predictor, expressed in square inches, of the differences in rib eye area of a sire's progeny at

a given end point.

FAT THICKNESS EPD (FT): A predictor, expressed in inches, of the differences in fat thickness of a sire's progeny, between the 12th and 13th ribs, at a given end point.

SHEAR EPD: An EPD developed from the Warner-Bratzler Shear Force (WBSF) test where the pounds of Force are measured to shear a steak. This is a measurement of tenderness. The more negative the number the more tender.

YIELD GRADE EPD (YG): Carcass yield grade score at 475 days.

## BIO-ECONOMIC \$VALUES ANGUS

WEANED CALF VALUE (\$W) is the expected average difference in future progeny performance for preweaning merit. \$W includes both revenue and cost adjustments associated with differences in birth weight, weaning direct growth, maternal milk, and mature cow size.

COW ENERGY VALUE (\$EN) assesses differences in cow energy requirements, expressed in dollars per cow per year, as an expected dollar savings difference in future daughters of sires. A larger value is more favorable when comparing two animals.

FEEDLOT VALUE (\$F) is the expected average difference in future progeny performance for postweaning merit compared to progeny of other sires.

GRID VALUE (\$G) is the expected average difference in future progeny performance for carcass grid merit compared to progeny of other sires.

QUALITY GRADE (\$QG) represents the quality grade segment of the economic advantage found in \$G. \$QG is intended for the specialized user wanting to place more emphasis on improving quality grade.

YIELD GRADE (\$YG) represents the yield grade segment of the economic advantage found in \$G. \$YG is intended for the specialized user wanting to place more emphasis on red meat yield.

BEEF VALUE (\$B) is the expected average difference in future progeny performance for postweaning and carcass value compared to progeny of other sires.

## SIMMENTAL

ALL-PURPOSE INDEX (API) Evaluates sires for use on the entire cow herd (bred to both Angus first-calf heifers and mature cows) with the portion of their daughters required to maintain herd size retained and the remaining heifers and steers put on feed and sold grade and yield.

TERMINAL INDEX (TI) Evaluates sires for use on mature Angus cows with all offspring put on feed and sold grade and yield.

## HEREFORD

BALDY MATERNAL INDEX (BMI\$) A maternally focused index that has a production system based on 1,000 Hereford x Angus females with a progeny harvest endpoint directed toward CHB.

CALVING EASY INDEX (CEZ\$) A general purpose index that focuses on identifying bulls that can be used on heifers and then ultimately the calves will be marketed through CHB.

BRAHMAN INFLUENCE INDEX (BI\$) A maternally focused index that is based on a 1,000 head cow herd of Brahman x Hereford cross cows. The progeny for this index will be harvested in a commodity based system.

CERTIFIED HEREFORD BEEF INDEX (CHB\$) A terminal sire index that is built on a production system where Hereford bulls sire calves for the CHB market.



# A BRIEF DESCRIPTION OF EBVS AND \$INDEX VALUES

The following is a brief description of Angus **GROUP BREEDPLAN EBVs** and **Breedobject \$Index Values** and Accuracies. For a more detailed explanation of these please refer to the Angus Society of Australia web site ([www.angusaustralia.com.au](http://www.angusaustralia.com.au)).

**ACCURACY (%)** ~ Provides an indication of the reliability of an EBV. As more performance information becomes available on an animal (or it's progeny, or relatives) then the accuracy of it's EBVs for particular traits will increase.

**CALVING EASE DIR (%)** ~ Estimates of the genetic differences between animals in the ability of their calves from 2 year old heifers to be delivered without assistance.

**CALVING EASE DTRS (%)** ~ Estimates of the genetic differences between animals in the ability of their 2 year old daughters to calve without assistance.

**GESTATION LENGTH (DAYS)** ~ Estimates of the genetic differences between animals in the number of days from the date of conception to the calf birth date.

**BIRTH WT (KG)** ~ Estimates of the genetic differences between animals in calf birth weight.

**200-DAY WT (KG)** ~ Estimates of the genetic differences between animals in liveweight at 200 days of age.

**400-DAY WT (KG)** ~ Estimates of the genetic differences between animals in liveweight at 400 days of age.

**600-DAY WT (KG)** ~ Estimates of the genetic differences between animals in liveweight at 600 days of age.

**MATURE COW WEIGHT (KG)** ~ Estimates of the genetic differences between animals in cow weight at 5 years of age.

**MILK (KG)** ~ Estimates of the genetic differences between animals in milk production, expressed as variation in 200-day weight of daughter's calves.

**SCROTAL SIZE (CM)** ~ Estimates of the genetic differences between animals in scrotal circumference at 400 days of age.

**DAYS TO CALVING** ~ Estimates of the genetic differences in female fertility, expressed as the number of days from the start of the joining period until subsequent calving.

**CARCASE WEIGHT (KG)** ~ Estimates of the genetic differences between animals in carcase weight, adjusted to 750 days of age.

**EYE MUSCLE AREA (CM<sup>2</sup>)** ~ Estimates of the genetic differences between animals in eye muscle area at the 12/13th rib site, in a 400Kg carcase.

**RIB FAT (MM)** ~ Estimates of the genetic differences between animals in fat depth at the 12/13th rib site, in a 400 Kg carcase.

**RUMP FAT (MM)** ~ Estimates of the genetic differences between animals in fat depth at the P8 rump site, in a 400Kg carcase.

**RETAIL BEEF YIELD % (RBY%)** ~ Estimates of the genetic differences between animals in percentage retail beef yield, in a 400Kg carcase.

**INTRA-MUSCULAR FAT % (IMF%)** ~ Estimates of the genetic differences between animals in percentage intra-muscular fat (marbling) at the 12/13th rib site, in a 400 Kg carcase.

**NET FEED INTAKE TRAIL (KG/DAY)** ~ Estimates of the genetic differences in feed intake for animals adjusted to the same growth rate and weight base.

**DOCILITY (%)** ~ Docility EBVs are estimates of genetic differences between animals in temperament. Docility EBVs are expressed as differences in the percentage of progeny that will be scored with acceptable temperament (ie. either "docile" or "restless").

**ANGUS BREEDING INDEX** ~ Estimates the genetic differences between animals in net profitability per cow joined in a typical commercial self replacing herd using Angus bulls. This selection index is not specific to a particular production system or market end-point, but identifies animals that will improve overall profitability in the majority of commercial grass and grain finishing beef production systems. The Angus Breeding Index is particularly suited to commercial producers who sell progeny into different markets, or to seedstock producers supplying bulls to commercial clients who produce for a range of different production systems and market end points.

**DOMESTIC INDEX** ~ Estimates the genetic differences between animals in net profitability per cow joined in a commercial self replacing herd targeting the domestic supermarket trade. Steers are assumed to be finished using either grass, grass supplemented by grain or grain (eg. 50 –70 days) with steers slaughtered at 490 Kg live weight (270 Kg carcase weight with 12 mm P8 fat depth) at 16 months of age. Daughters are retained for breeding and therefore maternal traits are of importance. Emphasis has been placed on eating quality and tenderness to favour animals that are suited to MSA requirements.

**HEAVY GRAIN INDEX** ~ Estimates the genetic differences between animals in net profitability per cow joined in a commercial self replacing herd targeting pasture grown steers with a 200 day feedlot finishing period for the grain fed high quality, highly marbled markets. Steers are assumed to be slaughtered at 760 Kg live weight (420Kg carcase weight with 30 mm P8 fat depth) at 24 months of age. Daughters are retained for breeding and therefore maternal traits are of importance. There is a significant premium for steers that exhibit superior marbling.

**HEAVY GRASS INDEX** ~ Estimates the genetic differences between animals in net profitability per cow joined in a commercial self replacing herd targeting pasture finished steers. Steers are assumed to be slaughtered at 620 Kg live weight (340 Kg carcase weight with 12 mm P8 fat depth) at 22 months of age. Daughters are retained for breeding and therefore maternal traits are of importance. Emphasis has been placed on eating quality and tenderness to favour animals that are suited to MSA requirements.

Back cover photo courtesy of Angus Australia

## 2019 BREED AVERAGES

2019 July USA Angus EPD Average Current Sires																			
Trait	CED	BW	WW	YW	RADG	YH	SC	DOC	Claw	Angle	CEM	Milk	\$EN	CW	Marb	REA	Fat	\$W	\$M
EPD	+7	+1.0	+55	+97	+21	+4	+77	+15	.50	.50	+8	+24	-4.0	+37	+49	+48	+015	+57	+57
																		+44	+122

Angus Australia Group Breedplan July 2019 Average																		
Trait	CE Dir	CE Dtr	GL	BW	200D	400D	600D	MCW	MILK	SC	DC	CW	EMA	RIB	RMP	RBY%	IMF%	ABI
EBV	+0.2	+0.4	-4.0	+4.3	+44	+81	+106	+91	+15	+1.8	-4.2	+59	+5.1	+0.0	-0.2	+0.4	+1.7	+\$114
																		+\$109
																		+\$119
																		+\$111

Hereford Group Breedplan July 2019 Average																			
Trait	CE Dir	CE Dtr	GL	BW	200D	400D	600D	MCW	MILK	SC	DC	CW	EMA	RIB	RMP	RBY%	IMF%	Supermkt Index	Grassfed Index
EBV	+1.1	+1.2	-0.3	+4.4	+33	+57	+77	+67	+16	+2.0	-2.6	+50	+3.2	+0.5	+0.5	+0.8	+0.4	+87	+83
																			+95
																			+97

Charolais Group Breedplan July 2019 Average																		
Trait	CE Dir	CE Dtr	GL	BW	200D	400D	600D	MCW	Milk	SC	CW	EMA	Rib	Rmp	RBY%	IMF%	Domestic Index	Export Index
EBV	+1.8	+1.1	-2.7	+0.2	+12	+23	+31	+32	+7	+1.1	+19	+1.5	+0.3	+0.4	+0.1	+0.2	+25	+34
																		+18





## **Genetocs** AUSTRALIA

Breeding better Australian herds

### **Genetics Australia Co-Operative Limited**

PO Box 195, BACCHUS MARSH, VIC 3340, AUSTRALIA

P: +61 3 5367 3888 F: + 61 3 5367 5100 Freecall: 1800 039 047

[www.genaust.com.au](http://www.genaust.com.au)

#### **ORDERS & CUSTOMER SERVICE**

T: 03 5367 3888

E: [orders@genaust.com.au](mailto:orders@genaust.com.au)

#### **Nigel Semmens**

**BEEF SALES MANAGER**

M: 0439 417 941

E: [nsemmens@genaust.com.au](mailto:nsemmens@genaust.com.au)

#### **Coleman Baulch**

**SALES REPRESENTATIVE**

Western Victoria, East Gippsland & Tasmania

M: 0429 473 563

E: [cbaulch@genaust.com.au](mailto:cbaulch@genaust.com.au)

#### **Gerard Collins**

**SALES REPRESENTATIVE**

Northern Victoria

M: 0428 387 276

E: [gcollins@genaust.com.au](mailto:gcollins@genaust.com.au)

#### **Anthony Shelly**

**CHIEF EXECUTIVE OFFICER**

M: 0408 529 410

E: [ashelly@genaust.com.au](mailto:ashelly@genaust.com.au)

#### **Rob Derksen**

**EXPORT MANAGER**

M: +61 418 129 606

E: [rderksen@genaust.com.au](mailto:rderksen@genaust.com.au)

#### **Rodney Brooks**

**REGIONAL SALES MANAGER**

Western Victoria, South East South

Australia, South & North Coast NSW

M: 0408 741 034

E: [rbrooks@genaust.com.au](mailto:rbrooks@genaust.com.au)

#### **Ian Noakes**

**SALES REPRESENTATIVE**

Western Australia

M: 0409 297 805

E: [inoakes@genaust.com.au](mailto:inoakes@genaust.com.au)

#### **Peter Thurn**

**BREEDING & GENETICS MANAGER**

M: 0417 575 986

E: [pthurn@genaust.com.au](mailto:pthurn@genaust.com.au)

#### **Gerard Brislin**

**REGIONAL SALES MANAGER**

Gippsland & Tasmania

M: 0408 107 019

E: [gbrislin@genaust.com.au](mailto:gbrislin@genaust.com.au)

#### **Andrew Medhurst**

**SALES REPRESENTATIVE**

Northern Victoria & Far South Coast NSW

M: 0417 575 932

E: [amedhurst@genaust.com.au](mailto:amedhurst@genaust.com.au)

#### **John Harle**

**SALES REPRESENTATIVE**

Queensland & NSW

M: 07 3818 0564

E: [jharle@genaust.com.au](mailto:jharle@genaust.com.au)

#### **Graeme Cowan**

**MERCHANDISE MANAGER**

M: 03 5367 9221

E: [gcowan@genaust.com.au](mailto:gcowan@genaust.com.au)

#### **Greg Tiller**

**REGIONAL SALES MANAGER**

Northern Victoria, Riverina NSW, Fleurieu &

Hills South Australia

M: 0407 366 985

E: [gtiller@genaust.com.au](mailto:gtiller@genaust.com.au)

#### **Ash Hogg**

**SALES REPRESENTATIVE**

Northern Victoria

M: 0407 842 144

E: [ahogg@genaust.com.au](mailto:ahogg@genaust.com.au)