



KING DOC - PAGE 15

WHEN YOU'RE HOT; YOU'RE *HOT*

MICROBIAL LIVESTOCK FEED SUPPLEMENT

Mylo® for healthier, heavier and earlier weaned calves.

Mylo® is liquid live microbial livestock feed supplement to aid in the digestive health of livestock.

- ✓ Increased animal weight gain
- ✓ University controlled study:
 - 8.4% higher weaning weight
 - Earlier development of gastrointestinal organs
- ✓ Commercial farms - quicker to wean
- ✓ Deliver performance for beef, dairy and sheep enterprises
- ✓ Easier animal health management
- ✓ Liquid product – easy to use
- ✓ No withholding period

"The bottom line is that we are getting better calves, and the dairy will get better heifers."



Annie McLean, at the Midfield Union Calf Shed, at Woolsthorpe, Vic, uses Mylo every day as part of their calf diet.

"Some of the health conditions we had trouble with have virtually disappeared. We believe it helps boost the animals' self defence."



Jakob Franzenburg, of Ballangeich, VIC, uses the Mylo biological product to produce healthier calves.

"It was so easy," Mrs Quinn said. "We raised 140 calves last spring. I think the calves had a better appetite and they looked healthier than in previous years."



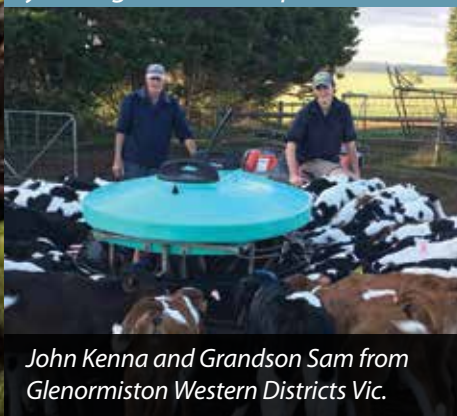
Michelle and Erika Quinn, of Cohuna, VIC.

"It definitely made a difference. The calves looked a lot brighter."



Jodie Solomons with healthy calves on the Donovan's Dairy property, at Mt Gambier, SA.

"Since using Mylo the calves are stronger, hungry and healthy. The newly weaned calves look like yearlings in the next paddock!"



John Kenna and Grandson Sam from Glenormiston Western Districts Vic.

Brad Fischer said, "After 86 days the Mylo group weighed an additional 9.7 kilograms per calf and were significantly healthier compared to control."



Catherine Surge and Elsa Fischer inspecting a calf on the Fischer property at Meningie, SA.

For more information talk to your local representative:

Vic – Western Districts/ Tas

Paul Weston

0438 500 032

Vic – Northern Vic/ Southern NSW

Dean Lombardozzi

0497 499 087

SA

Paul Weston

0438 500 032

HIGH BPI & BALANCED TYPE

POWERHOUSE

Progenesis Powerhouse 0200HO11284 Semex

RRP: \$30⁺GST



✓ Production ✓ Cell Count ✓ Medium Size

Aust. Type(g) 102 **BPI(g): 406** Aust. Mam(g) 107

- Desirable Stature to Strength ratio.
- Positive Teat Length.
- A lot to like about this bull...One of our Favourites!

Pedigree: **Bandares x Jedi**

NHD Special: \$24⁺GST

PRODUCTION

AUST. GENOMIC PROOF

ABV	08/20	0 DTRS
MILK	+782	% TEST
PROTEIN	+36	+0.27
FAT	+26	-0.11
GTPI 2599		

WORKABILITY

MILKING SPEED	104
TEMPERAMENT	104
LIKEABILITY	106
Cell Count	175
Mast. Resistance	107



OVERALL TYPE	MAMMARY SYSTEM	USA				DTRS		GENOMIC		PROD LIFE	DPR
+1.04	+1.55	0								+4.1	+2.5
STATURE	ANGULARITY	BODY DEPTH	CHEST WIDTH	PIN WIDTH	PIN SET	FOOT ANGLE	LEGS REAR VIEW				
+1.36	-0.52	-0.09	+0.81	+0.82	+0.65	+1.09	+0.36				
UDDER DEPTH	FORE ATT.	REAR ATT. HGT	REAR ATT. WIDTH	CENT LIGAMENT	F. TEAT PLACEMENT	R. TEAT PLACEMENT	TEAT LENGTH				
+2.07	+1.99	+1.99	+1.83	+0.67	+0.63	+0.38	+0.48				

STGSHAYDON

Vala Bandares Shaydon

Sexing Technologies



✓ Components ✓ Strength ✓ Production

Aust. Type(g) 104 **BPI(g): 368** Aust. Mam(g) 108

- Excellent Stature to Strength ratio.
- Massive Production with Positive Components.
- Snug Udders, Excellent Workabilities.

Pedigree: **Bandares x Silver**

RRP: \$20⁺GST

PRODUCTION

AUST. GENOMIC PROOF

ABV	08/20	0 DTRS
MILK	+444	% TEST
PROTEIN	+22	+0.19
FAT	+44	+0.36
GTPI 2548		

WORKABILITY

MILKING SPEED	103
TEMPERAMENT	102
LIKEABILITY	106
Cell Count	150
Mast. Resistance	101



OVERALL TYPE	MAMMARY SYSTEM	USA		DTRS	GENOMIC		PROD LIFE	DPR
+1.30	+1.82			0			+1.7	-0.4
STATURE	ANGULARITY	BODY DEPTH	CHEST WIDTH	PIN WIDTH	PIN SET	FOOT ANGLE	LEGS REAR VIEW	
+1.53	-0.59	+0.61	+1.45	+1.26	+1.37	+1.14	+1.18	
UDDER DEPTH	FORE ATT.	REAR ATT. HGT	REAR ATT. WIDTH	CENT LIGAMENT	F. TEAT PLACEMENT	R. TEAT PLACEMENT	TEAT LENGTH	
+2.17	+2.27	+2.23	+2.05	+1.24	+1.58	+1.62	-0.50	

AUSSIE GENOMIC YOUNG GUNS

SUPERDAVE

A2/A2

Warramont Superhero Dave

Genetics Australia

RRP: \$24+GST



✓ Production ✓ Components ✓ Medium Size

BPI(g): 369

- Excellent Semen Fertility! Popular Sexed option.
- High solids yield with Exceptional Components.
- Great Cell Count improver.

Pedigree: **Superhero x Doorman** **NHD Special: \$18 +GST**

PRODUCTION

AUST. GENOMIC PROOF

ABV	08/20	0 DTRS
MILK	-151	% TEST
PROTEIN	+22	+0.49
FAT	+37	+0.63

WORKABILITY

MILKING SPEED	101
TEMPERAMENT	104
LIKEABILITY	105
Cell Count	162
Mast. Resistance	105



OVERALL TYPE	MAMMARY SYSTEM	AUSTRALIAN		DTRS	PROOF		SURVIVAL	DRT. FERT
103	104			0			109	105
STATURE	ANGULARITY	BODY DEPTH	CHEST WIDTH	PIN WIDTH	PIN SET	FOOT ANGLE	LEGS REAR VIEW	
105	99	99	98	103	102	95	98	
UDDER DEPTH	FORE ATT.	REAR ATT. HGT	REAR ATT. WIDTH	CENT LIGAMENT	F. TEAT PLACEMENT	R. TEAT PLACEMENT	TEAT LENGTH	
103	103	104	98	103	107	101	98	

AMALFI

A2/A2

Carenda Amalfi

Genetics Australia

RRP: \$22+GST



✓ Dtr. Fertility ✓ Dairy Strength ✓ All Rounder

BPI(g): 339

- Super Daughter Fertility.
- New sire line for Australian herds.
- Exceptionally well balanced proof.

Pedigree: **Fedora x Main Event**

NHD Special: \$16+GST

PRODUCTION

AUST. GENOMIC PROOF

ABV	08/20	0 DTRS
MILK	+453	% TEST
PROTEIN	+18	+0.12
FAT	+39	+0.28

WORKABILITY

MILKING SPEED	103
TEMPERAMENT	101
LIKEABILITY	104
Cell Count	167
Mast. Resistance	109



OVERALL TYPE	MAMMARY SYSTEM	AUSTRALIAN		DTRS	PROOF		SURVIVAL	DRT. FERT.
106	106			0			110	111
STATURE	ANGULARITY	BODY DEPTH	CHEST WIDTH	PIN WIDTH	PIN SET	FOOT ANGLE	LEGS REAR VIEW	
105	100	98	100	100	98	100	104	
UDDER DEPTH	FORE ATT.	REAR ATT. HGT	REAR ATT. WIDTH	CENT LIGAMENT	F TEAT PLACEMENT	R. TEAT PLACEMENT	TEAT LENGTH	
106	103	107	102	104	101	101	100	

RELIABLY AUSTRALIAN PROVEN

CBCONTENDER A2/A2

Mr Super Contender

Sexing Technologies

RRP: \$32⁺GST



✓ Big & Powerful ✓ Black ✓ Cell Count ✓ Rear Teats

BPI: 354

- Now the number one Australian Proven BPI sire.
- Long standing NHD Favourite and now yours too (107 Likeability).
- Big, black - loads of Strength! High Semen Fertility.

Pedigree: **Supershot x Numero Uno** NHD Special: \$25⁺GST

PRODUCTION

AUSTRALIAN PROOF

ABV	08/20	723 DTRS
MILK	+513	% TEST
PROTEIN	+26	+0.23
FAT	+24	+0.03

WORKABILITY

MILKING SPEED	101
TEMPERAMENT	105
LIKEABILITY	107
Cell Count	184
Mast. Resistance	107



OVERALL TYPE	MAMMARY SYSTEM	AUSTRALIAN		DTRS	PROOF		SURVIVAL	DRT. FERT
106	102			307			113	108
STATURE	ANGULARITY	BODY DEPTH	CHEST WIDTH	PIN WIDTH	PIN SET	FOOT ANGLE	LEGS REAR VIEW	
112	95	97	100	107	104	100	96	
UDDER DEPTH	FORE ATT.	REAR ATT. HGT	REAR ATT. WIDTH	CENT LIGAMENT	F. TEAT PLACEMENT	R. TEAT PLACEMENT	TEAT LENGTH	
109	104	103	96	99	103	97	101	

JSMONTANA A2/A2

IHG Montana

Gen. Aust. / Jetstream

RRP: \$26⁺GST



✓ Teat Length ✓ Medium Size ✓ Dtr. Fertility

BPI(i): 310

- Montana can contribute many great traits to your herd.
- Now firmly an Australian favourite.
- Calving Ease (1.8% USA – 98% Rel.).

Pedigree: **Montross x Numero Uno** NHD Special: \$23⁺GST

PRODUCTION

INTERBULL PROOF

ABV	08/20	1,611 DTRS
MILK	+243	% TEST
PROTEIN	+11	+0.08
FAT	+27	+0.24

WORKABILITY

MILKING SPEED	104
TEMPERAMENT	101
LIKEABILITY	107
Cell Count	169
Mast. Resistance	106



OVERALL TYPE	MAMMARY SYSTEM	INTERBULL		DTRS	PROOF		SURVIVAL	DRT. FERT.
105	107			651			112	110
STATURE	ANGULARITY	BODY DEPTH	CHEST WIDTH	PIN WIDTH	PIN SET	FOOT ANGLE	LEGS	REAR VIEW
96	90	91	96	95	100	103		94
UDDER DEPTH	FORE ATT.	REAR ATT. HGT	REAR ATT. WIDTH	CENT LIGAMENT	F. TEAT PLACEMENT	R. TEAT PLACEMENT	TEAT LENGTH	
106	107	107	98	106	103	102	101	

50% POLLED PROGENY

STGBOLD-P

A2/A2

Vala Suits Bold

Sexing Technologies

RRP: \$24^{+GST}



✓ Production ✓ Components ✓ Medium Size

Aust. Type(g) 107 **BPI(g): 373** Aust. Mam(g) 105

- One of the very best Single 'P' bulls for BPI.
- Incredible Components and still positive for Milk.
- Medium sized, Black and A2A2.

Pedigree: **TLGSuits-PP x Duke**

NHD Special: \$22^{+GST}

PRODUCTION

AUST. GENOMIC PROOF

ABV	08/20	0 DTRS
MILK	+240	% TEST
PROTEIN	+26	+0.37
FAT	+40	+0.42
GTPI 2540		

WORKABILITY

MILKING SPEED	103
TEMPERAMENT	102
LIKEABILITY	105
Cell Count	168
Mast. Resistance	108



GG Dam

OVERALL TYPE	MAMMARY SYSTEM	USA		DTRS	GENOMIC		PROD LIFE	DPR
+0.90	+0.85			0			+1.9	-0.7
STATURE	ANGULARITY	BODY DEPTH	CHEST WIDTH	PIN WIDTH	PIN SET	FOOT ANGLE	LEGS REAR VIEW	
+0.62	+1.26	+0.51	+0.47	+1.01	+0.22	+0.30	-0.48	
UDDER DEPTH	FORE ATT.	REAR ATT. HGT	REAR ATT. WIDTH	CENT LIGAMENT	E TEAT PLACEMENT	R TEAT PLACEMENT	TEAT LENGTH	
+0.11	+0.72	+1.47	+1.35	+0.96	+0.56	+0.61	-0.15	

LUSTER-P

A2/A2

Cherry-Lily Zip Luster-P

7HO14160

WWS

RRP: \$34^{+GST}



Dam

✓ Semen Fertility ✓ Teat Length ✓ All Rounder

Aust. Type(g) 104 **BPI(g): 238** Aust. Mam(g) 107

- Excellent Semen Fertility!
- One of the very best Single 'P' bulls for Overall Type.
- Good Teat Length, Fantastic Rear Udders.

Pedigree: **Zipit-P x Kingboy**

NHD Special: \$28^{+GST}

PRODUCTION

AUST. GENOMIC PROOF

ABV	08/20	0 DTRS
MILK	+810	% TEST
PROTEIN	+21	-0.01
FAT	+24	-0.15
GTPI 2665		

WORKABILITY

MILKING SPEED	102
TEMPERAMENT	101
LIKEABILITY	104
Cell Count	159
Mast. Resistance	106



GG Dam

OVERALL TYPE	MAMMARY SYSTEM	USA		DTRS	GENOMIC		PROD LIFE	DPR
+2.20	+1.60			0			+3.3	+0.2
STATURE	ANGULARITY	BODY DEPTH	CHEST WIDTH	PIN WIDTH	PIN SET	FOOT ANGLE	LEGS REAR VIEW	
+1.42	+1.96	+0.59	+0.20	+1.18	+0.69	+1.24	+0.96	
UDDER DEPTH	FORE ATT.	REAR ATT. HGT	REAR ATT. WIDTH	CENT LIGAMENT	F. TEAT PLACEMENT	R. TEAT PLACEMENT	TEAT LENGTH	
+1.03	+1.58	+2.78	+2.56	+0.93	+0.51	+0.63	+0.82	

100% POLLED PROGENY

CHEVY-PP

A2/A2

Carenda Chevy-PP

29HO15636

ABS

RRP: \$26^{+GST}



✓ Teat Length ✓ Rear Teats ✓ Milk Yield

BPI(g): 360

- Australian bred Double 'P' sire that ticks a lot of boxes.
- Very High Milk flow with High Protein %.
- Bull is mainly Black, A2A2 - Anticipate very high demand.

Pedigree: Jeronimo-P x Powerball-P **NHD Special: \$24^{+GST}**

PRODUCTION

AUST. GENOMIC PROOF

ABV	08/20	0 DTRS
MILK	+838	% TEST
PROTEIN	+40	+0.33
FAT	+25	-0.15

WORKABILITY

MILKING SPEED	103
TEMPERAMENT	104
LIKEABILITY	105
Cell Count	128
Mast. Resistance	98



OVERALL TYPE	MAMMARY SYSTEM	AUSTRALIAN		DTRS	PROOF		SURVIVAL	DRT. FERT
103	106			0			109	105
STATURE	ANGULARITY	BODY DEPTH	CHEST WIDTH	PIN WIDTH	PIN SET	FOOT ANGLE	LEGS REAR VIEW	
107	101	95	93	104	103	93	95	
UDDER DEPTH	FORE ATT.	REAR ATT. HGT	REAR ATT. WIDTH	CENT LIGAMENT	F. TEAT PLACEMENT	R. TEAT PLACEMENT	TEAT LENGTH	
103	103	108	104	103	97	98	100	

EUSTICE-PP

A2/A2

S-S-I Starr-P Eustice-PP

7HO14645

WWS

RRP: \$28^{+GST}



✓ Semen Fertility ✓ Rear Udders ✓ Milk Yield

Aust. Type(g) 103 **BPI(g): 297** Aust. Mam(g) 105

- Excellent Semen Fertility.
- High Milk and Protein yield.
- Sexed Ultra 2 Mil RRP \$50 - **NHD Special \$48**

Pedigree: Starr-P x Zipit-P

NHD Special: \$25^{+GST}

PRODUCTION

AUST. GENOMIC PROOF

ABV	08/20	0 DTRS
MILK	+912	% TEST
PROTEIN	+30	+0.10
FAT	+8	-0.44
GTPI 2456		

WORKABILITY

MILKING SPEED	101
TEMPERAMENT	103
LIKEABILITY	105
Cell Count	140
Mast. Resistance	101



OVERALL TYPE	MAMMARY SYSTEM	USA		DTRS	GENOMIC		PROD LIFE	DPR
+1.42	+1.41			0			+2.1	-0.8
STATURE	ANGULARITY	BODY DEPTH	CHEST WIDTH	PIN WIDTH	PIN SET	FOOT ANGLE	LEGS REAR VIEW	
+1.12	+1.53	+0.63	+0.33	+1.53	+1.21	+0.61	+0.09	
UDDER DEPTH	FORE ATT.	REAR ATT. HGT	REAR ATT. WIDTH	CENT LIGAMENT	F. TEAT PLACEMENT	R. TEAT PLACEMENT	TEAT LENGTH	
+0.80	+1.64	+2.40	+2.21	+0.30	+0.11	+0.60	+0.24	

POLLED AND PROUD

CFP-PP RC

A2/A2

Vogue CFP-PP

Gen. Aust. / Jetstream



✓ Udders ✓ Components ✓ Cell Count

Aust. Type(g) 104 **BPI(g): 386** Aust. Mam(g) 108

- The highest Double 'P' BPI sire available.
- Fantastic Udders delivering really High Component Milk.
- Very good Rump Structure.

Pedigree: **Drastic-P x Splendid-P**

RRP: \$28^{+GST}

PRODUCTION

AUST. GENOMIC PROOF

ABV	08/20	0 DTRS
MILK	+323	% TEST
PROTEIN	+26	+0.32
FAT	+34	+0.28
GTPI 2566		

WORKABILITY

MILKING SPEED	103
TEMPERAMENT	103
LIKEABILITY	105
Cell Count	149
Mast. Resistance	104



OVERALL TYPE	MAMMARY SYSTEM	USA		DTRS	GENOMIC		PROD LIFE	DPR
+1.45	+1.82			0			-0.2	-1.0
STATURE	ANGULARITY	BODY DEPTH	CHEST WIDTH	PIN WIDTH	PIN SET	FOOT ANGLE	LEGS REAR VIEW	
+2.17	+1.79	+0.55	+0.15	+1.15	+1.72	+0.52	-0.22	
UDDER DEPTH	FORE ATT.	REAR ATT. HGT	REAR ATT. WIDTH	CENT LIGAMENT	F TEAT PLACEMENT	R TEAT PLACEMENT	TEAT LENGTH	
+2.23	+2.06	+2.55	+2.35	+1.23	+1.37	+1.28	-0.03	

A2P2-PP

A2/A2

Vogue A2P2-PP

Gen. Aust. / Jetstream

RRP: \$38^{+GST}



✓ Strength ✓ Type ✓ Udders

Aust. Type(g) 106 **BPI(g): 334** Aust. Mam(g) 107

- Possibly the highest credentialed PP sire available.
- Lots of body capacity, hard to find in PP bulls.
- 100% polled progeny and adds Teat Length.

Pedigree: **Luster-P x Duke**

NHD Special: \$30^{+GST}

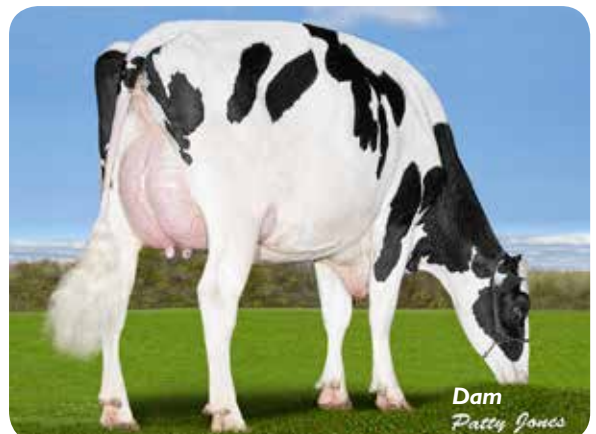
PRODUCTION

AUST. GENOMIC PROOF

ABV	08/20	0 DTRS
MILK	+365	% TEST
PROTEIN	+21	+0.22
FAT	+43	+0.40
GTPI 2627		

WORKABILITY

MILKING SPEED	103
TEMPERAMENT	101
LIKEABILITY	104
Cell Count	158
Mast. Resistance	106



OVERALL TYPE	MAMMARY SYSTEM	USA		DTRS	GENOMIC		PROD LIFE	DPR
+2.30	+1.79			0			+1.2	-1.3
STATURE	ANGULARITY	BODY DEPTH	CHEST WIDTH	PIN WIDTH	PIN SET	FOOT ANGLE	LEGS REAR VIEW	
+2.12	+1.55	+1.47	+1.57	+2.03	+1.88	+0.87	+0.71	
UDDER DEPTH	FORE ATT.	REAR ATT. HGT	REAR ATT. WIDTH	CENT LIGAMENT	F. TEAT PLACEMENT	R. TEAT PLACEMENT	TEAT LENGTH	
+1.73	+2.40	+2.68	+2.47	+0.96	+0.93	+0.92	+0.17	

CALVING EASE & MORE !

TLGLARK

A2/A2

Vala Bandares Lark

TLG

RRP: \$28⁺GST



GG Dam

Calving Ease

✓ Smaller Cows ✓ Udders ✓ Dtr. Fertility

Aust. Type(g) 102 **BPI(g): 389** Aust. Mam(g) 108

- Smaller cows with first class Udders.
- Exciting new Australian based sire.
- High Daughter Fertility. Calving Ease (1.7% – USA Genomic).

Pedigree: **Bandares x Modesty**

NHD Special: \$22⁺GST

PRODUCTION

AUST. GENOMIC PROOF

ABV	08/20	0 DTRS
MILK	+218	% TEST
PROTEIN	+23	+0.33
FAT	+36	+0.39
GTPI 2527		

WORKABILITY

MILKING SPEED	104
TEMPERAMENT	103
LIKEABILITY	105
Cell Count	154
Mast. Resistance	102



Family Member

OVERALL TYPE	MAMMARY SYSTEM	USA	DTRS	GENOMIC		PROD LIFE	DPR
+1.11	+2.17		0			+3.8	+2.1
STATURE	ANGULARITY	BODY DEPTH	CHEST WIDTH	PIN WIDTH	PIN SET	FOOT ANGLE	REAR VIEW
+0.57	-1.21	-0.53	+0.32	+0.15	-0.28	+0.87	+0.95
UDDER DEPTH	FORE ATT.	REAR ATT. HGT	REAR ATT. WIDTH	CENT LIGAMENT	F. TEAT PLACEMENT	R. TEAT PLACEMENT	TEAT LENGTH
+2.94	+3.07	+1.88	+1.73	+0.76	+1.32	+1.19	+0.21

NARUTO

A2/A2

Naruto

Agri-Gene

RRP: \$28⁺GST



✓ Chest Width ✓ Rear Teats ✓ Production ✓ Dtr. Fert

BPI(g): 351

- Looking for High Dtr Fertility and Cell Count improvement? This bull has them in Spades!
- Calving Ease (104 Australia – Genomic).

Pedigree: **Montana x Supershot**

NHD Special: \$22⁺GST

PRODUCTION

AUST. GENOMIC PROOF

ABV	08/20	0 DTRS
MILK	+320	% TEST
PROTEIN	+19	+0.20
FAT	+20	+0.10

WORKABILITY

MILKING SPEED	102
TEMPERAMENT	103
LIKEABILITY	106
Cell Count	175
Mast. Resistance	109



Dam

OVERALL TYPE	MAMMARY SYSTEM	AUSTRALIAN		DTRS	PROOF		SURVIVAL	DTR. FERT.
104	104			0			110	112
STATURE	ANGULARITY	BODY DEPTH	CHEST WIDTH	PIN WIDTH	PIN SET	FOOT ANGLE	REAR VIEW	
98	90	93	104	97	104	99	99	
UDDER DEPTH	FORE ATT.	REAR ATT. HGT	REAR ATT. WIDTH	CENT. LIGAMENT	F. TEAT PLACEMENT	R. TEAT PLACEMENT	TEAT LENGTH	
105	105	108	97	101	98	96	101	

SELECTED SEXED SEMEN SIREs

PERSEUS

A2/A2

Westcoast Perseus

0200HO10777

SEMEX

RRP: \$35^{+GST}



✓ Calving Ease ✓ Cell Count ✓ Dtr Fertility

BPI(i): 451

- The highest Interbull BPI sire at a whopping 451 !
- Sexed Ultra 2 Mil semen RRP \$60 - **NHD Special \$50**
- Calving Ease (1.5% USA – 98% Rel), (106 Aust. - Rel 97%)

Pedigree: Penmanship x Doorman **NHD Special: \$26^{+GST}**

PRODUCTION

INTERBULL PROOF

ABV	08/20	465 DTRS
MILK	+308	% TEST
PROTEIN	+29	+0.39
FAT	+27	+0.20
GTPI 2673		

WORKABILITY

MILKING SPEED	102
TEMPERAMENT	103
LIKEABILITY	105
Cell Count	190
Mast. Resistance	108



Dam
Patty Jones

OVERALL TYPE	MAMMARY SYSTEM	INTERBULL			PROOF	SURVIVAL	DTR FERT.
100	108	169				109	113
STATURE	ANGULARITY	BODY DEPTH	CHEST WIDTH	PIN WIDTH	PIN SET	FOOT ANGLE	LEGS REAR VIEW
99	93	93	95	98	92	100	95
UDDER DEPTH	FORE ATT.	REAR ATT. HGT	REAR ATT. WIDTH	CENT LIGAMENT	F. TEAT PLACEMENT	R. TEAT PLACEMENT	TEAT LENGTH
108	103	105	103	109	104	106	97

STGGAMMA

Farnear-Bh Delta-Gamma

Sexing Technologies

RRP: \$20^{+GST}



Frank Robinson

✓ Calving Ease ✓ Udders ✓ Medium Size

BPI(i): 223

- Early milking dtrs are medium sized and delivering the goods !
- Very pleasing Udders, Calving Ease (1.3% USA – 94% Rel).
- Sexed ultra 4 Mil semen RRP \$52 - **NHD Special \$45.**

Pedigree: Delta x Numero Uno **NHD Special: \$18^{+GST}**

PRODUCTION

INTERBULL PROOF

ABV	08/20	365 DTRS
MILK	+537	% TEST
PROTEIN	+14	-0.01
FAT	+38	+0.22
GTPI 2413		

WORKABILITY

MILKING SPEED	102
TEMPERAMENT	101
LIKEABILITY	104
Cell Count	147
Mast. Resistance	105



Dam
Edith

OVERALL TYPE	MAMMARY SYSTEM	INTERBULL			PROOF	SURVIVAL	DTR FERT.
102	106	105				110	106
STATURE	ANGULARITY	BODY DEPTH	CHEST WIDTH	PIN WIDTH	PIN SET	FOOT ANGLE	LEGS REAR VIEW
101	94	94	99	100	102	99	101
UDDER DEPTH	FORE ATT.	REAR ATT. HGT	REAR ATT. WIDTH	CENT LIGAMENT	F. TEAT PLACEMENT	R. TEAT PLACEMENT	TEAT LENGTH
106	102	107	100	105	103	101	99

SELECTED SEXED SEMEN SIRES

GAMMON

A2/A2

Denovo 15424 Gammon

29HO19149

ABS

RRP: \$26^{+GST}



Dam

Calving Ease

✓ Calving Ease ✓ Components ✓ Medium Size

Aust. Type(g) 103 **BPI(g): 308** Aust. Mam(g) 105

• Smaller commercially orientated cows.

• Sexcel semen RRP \$55 – **NHD Special \$45.**

• Calving Ease (1.3% USA – Genomic).

Pedigree: **Skywalker x Delta**

NHD Special: \$20^{+GST}

PRODUCTION

AUST. GENOMIC PROOF

ABV	08/20	0 DTRS
MILK	-16	% TEST
PROTEIN	+21	+0.40
FAT	+32	+0.47
GTPI 2809		

WORKABILITY

MILKING SPEED	102
TEMPERAMENT	103
LIKEABILITY	105
Cell Count	148
Mast. Resistance	103



Sire

OVERALL TYPE	MAMMARY SYSTEM	USA		DTRS	GENOMIC		PROD LIFE	DPR
+1.39	+1.41			0			+4.2	+0.6
STATURE	ANGULARITY	BODY DEPTH	CHEST WIDTH	PIN WIDTH	PIN SET	FOOT ANGLE	LEGS REAR VIEW	
+0.55	+1.11	+0.58	+0.22	+0.11	-0.18	+1.12	+0.53	
UDDER DEPTH	FORE ATT.	REAR ATT. HGT	REAR ATT. WIDTH	CENT LIGAMENT	F. TEAT PLACEMENT	R. TEAT PLACEMENT	TEAT LENGTH	
+0.96	+1.58	+1.81	+1.67	+1.14	+0.70	+0.99	-0.34	

TAILOR

De-Su 12128 Tailor

29HO17706

ABS

RRP: \$26^{+GST}



Dtr.

Calving Ease

✓ Cell Count ✓ Super Udders ✓ Medium Size

BPI: 317

• Australian Dtrs. emulating the great performance of his USA Dtrs.

• Sexcel semen RRP \$50 - **NHD Special \$45.**

• Calving Ease (1.9% USA - 98% Rel.)

Pedigree: **La Bron x Shamrock**

NHD Special: \$22^{+GST}

PRODUCTION

AUSTRALIAN PROOF

ABV	08/20	1,318 DTRS
MILK	+635	% TEST
PROTEIN	+19	+0.04
FAT	+17	-0.15

WORKABILITY

MILKING SPEED	105
TEMPERAMENT	102
LIKEABILITY	104
Cell Count	175
Mast. Resistance	107



Dtr.

OVERALL TYPE	MAMMARY SYSTEM	AUSTRALIAN		DTRS	PROOF		SURVIVAL	DTR. FERT.
109	112			185			111	107
STATURE	ANGULARITY	BODY DEPTH	CHEST WIDTH	PIN WIDTH	PIN SET	FOOT ANGLE	LEGS REAR VIEW	
103	101	99	97	108	107	93	96	
UDDER DEPTH	FORE ATT.	REAR ATT. HGT	REAR ATT. WIDTH	CENT LIGAMENT	F. TEAT PLACEMENT	R. TEAT PLACEMENT	TEAT LENGTH	
102	107	106	104	114	107	111	101	

Red River

AUTHENTIC AUSSIE KNOW HOW
BUILT TO LAST



**DESIGN, DELIVERY
& INSTALLATION**



• Cattle Yards • Cattle Handling Equipment

Northern Victoria:

Hamish Hooper - 0428 563 091

South Australia:

Kent Llewellyn - 0417 821 179

Western District:

Brendan Billington - 0407 843 909

For more information visit: www.nationalherd.com.au

COVERING ALL BASES

NACASH

A2/A2

Nacash

Agri-Gene

RRP: \$45+GST



✓ Medium Size ✓ Strength ✓ Components

Aust. Type(g) 104 **BPI(g): 358** Aust. Mam(g) 106

- Medium sized cows with good Strength.
- Terrific transmitter of High Components.
- One of the best for Cell Count improvement.

Pedigree: **Superhero x Rubicon**

NHD Special: \$35+GST

PRODUCTION

AUST. GENOMIC PROOF

ABV	08/20	0 DTRS
MILK	+311	% TEST
PROTEIN	+23	+0.27
FAT	+41	+0.40
GTPI 2800		

WORKABILITY

MILKING SPEED	103
TEMPERAMENT	104
LIKEABILITY	106
Cell Count	169
Mast. Resistance	105



OVERALL TYPE	MAMMARY SYSTEM	USA		DTRS	GENOMIC		PROD LIFE	DPR
+1.51	+1.50			0			+4.8	+0.7
STATURE	ANGULARITY	BODY DEPTH	CHEST WIDTH	PIN WIDTH	PIN SET	FOOT ANGLE	LEGS REAR VIEW	
+0.94	+0.39	+0.64	+1.04	+1.08	-0.47	+0.78	+1.13	
UDDER DEPTH	FORE ATT.	REAR ATT. HGT	REAR ATT. WIDTH	CENT LIGAMENT	F TEAT PLACEMENT	R. TEAT PLACEMENT	TEAT LENGTH	
+1.39	+2.24	+1.93	+1.78	+0.23	+0.98	+0.36	+0.18	

STGLANDSLIDE

Vogue Landslide

Sexing Technologies



✓ Cell Count ✓ Udders ✓ Production

Aust. Type(g) 103 **BPI(g): 319** Aust. Mam(g) 106

- A breed leader for Overall Type and Mammary Systems.
- Good Milk flow coupled with Positive Components.
- Calving Ease (1.8% USA - 87% Rel.).

Pedigree: **Contender x Alta IstClass**

RRP: \$20+GST

PRODUCTION

AUST. GENOMIC PROOF

ABV	08/20	0 DTRS
MILK	+617	% TEST
PROTEIN	+22	+0.10
FAT	+31	+0.06
GTPI 2560		

WORKABILITY

MILKING SPEED	104
TEMPERAMENT	105
LIKEABILITY	106
Cell Count	182
Mast. Resistance	109



OVERALL TYPE	MAMMARY SYSTEM	USA	DTRS	GENOMIC	PROD LIFE	DPR	
+2.17	+2.06		0		+2.2	-0.1	
STATURE	ANGULARITY	BODY DEPTH	CHEST WIDTH	PIN WIDTH	PIN SET	FOOT ANGLE	LEGS REAR VIEW
+2.70	+1.36	+1.39	+1.47	+1.55	-0.02	+1.46	+0.57
UDDER DEPTH	FORE ATT.	REAR ATT. HGT	REAR ATT. WIDTH	CENT LIGAMENT	F. TEAT PLACEMENT	R. TEAT PLACEMENT	TEAT LENGTH
+2.38	+2.97	+2.84	+2.61	+1.46	+1.77	+1.43	-0.34

BUILDING BLOCKS FOR A BETTER HERD

HANDPICK-P

A2/A2

Cedarwal Handpick-P

0200HOI1826

Semex

RRP: \$40^{+GST}



✓ Medium Size ✓ Udders ✓ Foot Angle

Aust. Type(g) 104 **BPI(g): 246** Aust. Mam(g) 105

- Truly an Udder Specialist.
- Medium size cows with very good Feet.
- Single 'P' bull with many fine attributes.

Pedigree: **Luster-P x Bandares**

NHD Special: \$26^{+GST}

PRODUCTION

AUST. GENOMIC PROOF

ABV	08/20		0 DTRS
MILK	+391	% TEST	
PROTEIN	+16	+0.11	
FAT	+26	+0.13	
GTPI 2614			

WORKABILITY

MILKING SPEED	103
TEMPERAMENT	102
LIKEABILITY	105
Cell Count	156
Mast. Resistance	107



Grand Dam
Patty Jones

OVERALL TYPE	MAMMARY SYSTEM	USA		DTRS	GENOMIC		PROD LIFE	DPR
+2.05	+2.56			0			+3.3	+1.0
STATURE	ANGULARITY	BODY DEPTH	CHEST WIDTH	PIN WIDTH	PIN SET	FOOT ANGLE	LEGS REAR VIEW	
+0.96	+0.29	+0.31	+0.66	+0.79	+0.88	+1.23	+0.58	
UDDER DEPTH	FORE ATT.	REAR ATT. HGT	REAR ATT. WIDTH	CENT LIGAMENT	F. TEAT PLACEMENT	R. TEAT PLACEMENT	TEAT LENGTH	
+2.39	+2.90	+3.19	+2.93	+1.26	+0.90	+0.87	-0.35	

DREAMBIG

A2/A2

Kings-Ransom S Dreambig

94HOI9526

ABS

RRP: \$34^{+GST}



Dam

✓ Body Capacity ✓ Feet & Legs ✓ Mammary

Aust. Type(g) 104 **BPI(g): 305** Aust. Mam(g) 111

- Big barrelled cows with tons of capacity.
- Plenty of width from the front to the rear.
- For farmers who like REAL cows !

Pedigree: **Samaritan x Granite**

NHD Special: \$28^{+GST}

PRODUCTION

AUST. GENOMIC PROOF

ABV	08/20		0 DTRS
MILK	+464	% TEST	
PROTEIN	+21	+0.16	
FAT	+23	+0.04	
GTPI 2679			

WORKABILITY

MILKING SPEED	103
TEMPERAMENT	103
LIKEABILITY	105
Cell Count	154
Mast. Resistance	107



Grand Dam

OVERALL TYPE	MAMMARY SYSTEM	USA		DTRS	GENOMIC		PROD LIFE	DPR
+2.94	+2.04			0			+2.0	-0.7
STATURE	ANGULARITY	BODY DEPTH	CHEST WIDTH	PIN WIDTH	PIN SET	FOOT ANGLE	LEGS REAR VIEW	
+2.74	+2.72	+2.00	+1.54	+2.20	+0.58	+1.58	+1.49	
UDDER DEPTH	FORE ATT.	REAR ATT. HGT	REAR ATT. WIDTH	CENT LIGAMENT	F. TEAT PLACEMENT	R. TEAT PLACEMENT	TEAT LENGTH	
+1.73	+2.45	+3.17	+2.92	+2.30	+2.26	+2.26	+0.47	

WHEN YOU'RE HOT; YOU'RE HOT

KING DOC

Woodcrest King Doc

250HO12961

WWS

RRP: \$45^{+GST}



✓ +3.32 Type USA ✓ +2.23 Udders USA ✓ Milk Yield

BPI(i): 274

- **A legend has arrived.** No if's, no but's, and no maybe's!
- Head and Shoulders above the rest when looking for high milk & high type
- Stocks will not last at this super special price.

Pedigree: Kingboy x Mack

NHD Special: \$35^{+GST}

PRODUCTION

INTERBULL PROOF

ABV	08/20	508 DTRS
MILK	+1372	% TEST
PROTEIN	+33	-0.07
FAT	+36	-0.33
GTPI 2755		

WORKABILITY

MILKING SPEED	100
TEMPERAMENT	100
LIKEABILITY	100
Cell Count	143
Mast. Resistance	105



OVERALL TYPE	MAMMARY SYSTEM	INTERBULL		DTRS	PROOF		SURVIVAL	DTR FERT.
112	111			160			107	105
STATURE	ANGULARITY	BODY DEPTH	CHEST WIDTH	PIN WIDTH	PIN SET	FOOT ANGLE	LEGS REAR VIEW	
111	104	97	97	105	99	103	106	
UDDER DEPTH	FORE ATT.	REAR ATT. HGT	REAR ATT. WIDTH	CENT LIGAMENT	F. TEAT PLACEMENT	R. TEAT PLACEMENT	TEAT LENGTH	
107	106	108	100	114	109	107	101	

RADIO

A2/A2

Morningview Radio

94HO19189

ABS

RRP: \$38^{+GST}



✓ Overall Type ✓ Udders ✓ Milk Yield

Aust. Type(g) 105 BPI(g): 246 Aust. Mam(g) 109

- Rivers of Milk from Sensational Udders.
- Excellent Feet and Legs.
- The Complete Package! Calving Ease (1.7% - USA Genomic).

Pedigree: Humblenkind x Kingboy

NHD Special: \$30^{+GST}

PRODUCTION

AUST. GENOMIC PROOF

ABV	08/20	0 DTRS
MILK	+1033	% TEST
PROTEIN	+22	-0.11
FAT	+25	-0.28
GTPI 2548		

WORKABILITY

MILKING SPEED	103
TEMPERAMENT	101
LIKEABILITY	104
Cell Count	163
Mast. Resistance	108



OVERALL TYPE	MAMMARY SYSTEM	USA		DTRS	GENOMIC		PROD LIFE	DPR
+2.50	+2.15			0			+2.4	+0.9
STATURE	ANGULARITY	BODY DEPTH	CHEST WIDTH	PIN WIDTH	PIN SET	FOOT ANGLE	LEGS REAR VIEW	
+2.81	+1.89	+1.54	+1.19	+1.85	-0.16	+1.81	+1.39	
UDDER DEPTH	FORE ATT.	REAR ATT. HGT	REAR ATT. WIDTH	CENT LIGAMENT	F. TEAT PLACEMENT	R. TEAT PLACEMENT	TEAT LENGTH	
+2.34	+2.83	+3.25	+2.99	+1.25	+1.23	+1.25	-0.32	

YOU CAN HAVE IT ALL!

AWESTRUCK

A2/A2

S-S-I BG Casc Awestruck

250HO15140

WWS

RRP: \$45^{+GST}



✓ High Fat ✓ Cell Count ✓ Overall Quality

Aust. Type(g) 103 **BPI(g): 351** Aust. Mam(g) 107

- At 2921 TPI this sire of tomorrows genomic giants has it all.
- The first of the **WWS & NHD Super Samplers**.
- **See across page for details.**

Pedigree: **Cascade x Achiever**

NHD Special: \$35^{+GST}

PRODUCTION

AUST. GENOMIC PROOF

ABV	08/20	0 DTRS
MILK	+448	% TEST
PROTEIN	+19	+0.13
FAT	+40	+0.30
GTPI 2921		

WORKABILITY

MILKING SPEED	102
TEMPERAMENT	100
LIKEABILITY	103
Cell Count	174
Mast. Resistance	109



OVERALL TYPE	MAMMARY SYSTEM	USA		DTRS	GENOMIC		PROD LIFE	DPR
+2.03	+1.76			0			+3.6	+0.2
STATURE	ANGULARITY	BODY DEPTH	CHEST WIDTH	PIN WIDTH	PIN SET	FOOT ANGLE	LEGS REAR VIEW	
+1.74	+1.66	+1.27	+1.21	+1.67	+1.41	+0.74	+1.46	
UDDER DEPTH	FORE ATT.	REAR ATT. HGT	REAR ATT. WIDTH	CENT LIGAMENT	F TEAT PLACEMENT	R. TEAT PLACEMENT	TEAT LENGTH	
+1.04	+2.04	+2.84	+2.61	+1.39	+1.77	+1.53	-0.85	

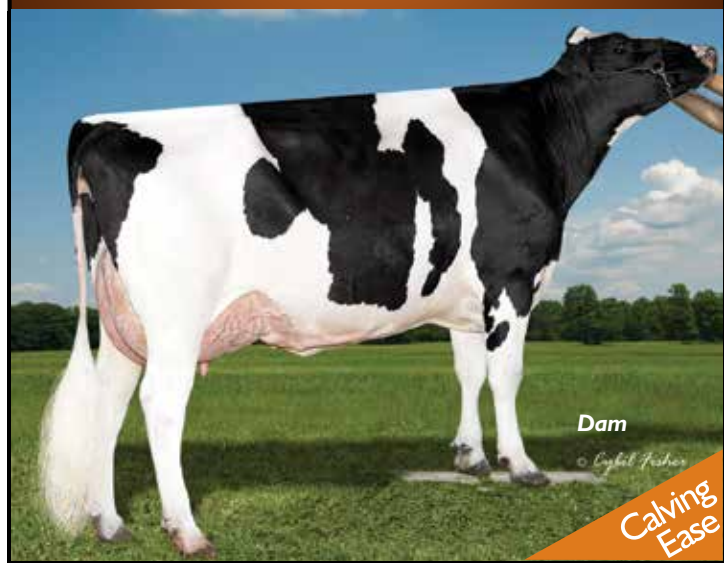
MOEMONEY

A2/A2

Bacon-Hill Moemoney

250HO14048

WWS



✓ Teat Length ✓ Udders ✓ Cell Count

Aust. Type(g) 99 **BPI(g): 360** Aust. Mam(g) 107

- Super Udders with added Teat Length.
- Very good Feet and Legs.
- Calving Ease (1.6% USA - 96% Rel.) High Semen Fertility.

Pedigree: **Bandares x Kingboy**

RRP: \$24^{+GST}

PRODUCTION

AUST. GENOMIC PROOF

ABV	08/20	0 DTRS
MILK	+534	% TEST
PROTEIN	+23	+0.16
FAT	+32	+0.14
GTPI 2479		

WORKABILITY

MILKING SPEED	102
TEMPERAMENT	101
LIKEABILITY	105
Cell Count	177
Mast. Resistance	109



OVERALL TYPE	MAMMARY SYSTEM	USA		DTRS	GENOMIC		PROD LIFE	DPR
+1.69	+1.92			0			+2.9	+0.8
STATURE	ANGULARITY	BODY DEPTH	CHEST WIDTH	PIN WIDTH	PIN SET	FOOT ANGLE	LEGS REAR VIEW	
+1.93	+0.44	+0.30	+0.61	+1.61	+0.27	+1.41	+0.92	
UDDER DEPTH	FORE ATT.	REAR ATT. HGT	REAR ATT. WIDTH	CENT LIGAMENT	F. TEAT PLACEMENT	R. TEAT PLACEMENT	TEAT LENGTH	
+2.36	+2.49	+2.42	+2.23	+1.46	+1.28	+1.28	+0.48	

INAUGURAL SUPER SAMPLER PROGRAM EXCLUSIVE TO NHD HERD RECORDING HERDS



S-S-I BG Casc **AWESTRUCK – 250HO15140** RRP \$45
BPI(g) 351 USA Type +2.03 USA Mam. +1.76
✓ TPI 2921 ✓ A2A2 ✓ Overall Quality

Regan-Danhof **CAPONE - 250HO15217** RRP \$34
BPI(g) 354 USA Type +1.43 USA Mam. +0.98
✓ TPI 2817 ✓ A2A2 ✓ Teat Length

Sandy-Valley BD **FREEBORN – 7HO13981** RRP \$28
BPI(g) 413 USA Type +0.65 USA Mam. +1.21
✓ Medium Size ✓ Shallow Udders ✓ A2A2

Welcome **DELPRO 3565 - 14HO14442** RRP \$28
BPI(g) 368 USA Type +0.76 USA Mam. +0.92
✓ TPI 2727 ✓ I16 Dtr Fert Aust. ✓ A2A2

- Any 2 Sires, Equal Quantities (Maximum 20 doses each) at \$19
- Any 3 Sires, Equal Quantities (Maximum 20 doses each) at \$17
- All 4 Sires, Equal Quantities (Maximum 20 doses each) at \$16



SPECIALTY SIRES

NAME & DESCRIPTION	RRP SPECIAL	NAME & DESCRIPTION	RRP SPECIAL
Eskdale Mr AFLAME-RED – 94HO0914 BPI(g) 250 USA Type +2.10 USA Mam. +1.92 ✓ Outcross ✓ Udder Attachments ✓ Shallow Udders	\$28 \$25	Sandy-Valley J PHARO – 250HO12975 BPI(g) 209 USA Type +2.26 USA Mam. +2.09 ✓ Strength ✓ Dtr Proven ✓ A2/A2	\$28 \$25
Stantons CHIEF - STCHIEF* BPI(g) 239 USA Type +2.35 USA Mam. +2.54 ✓ High Demand ✓ Dtr Proven ✓ Udders ✓ A2/A2	\$35 \$30	Gdr-Kings RADAR – 94HO19324* BPI(g) 239 USA Type +2.80 USA Mam. +2.32 ✓ Dairy Strength ✓ Udders ✓ Feet & Legs	\$32 \$28
Kings-Ransom G DYLAN – AGRDYLAN BPI(g) N/A USA Type +2.59 USA Mam. +2.14 ✓ Udders ✓ Feet & Legs ✓ NHD Hit Pick	\$35 \$30	Raspberry REVERE-RED – 0200HO11819 BPI(g) 109 USA Type +2.67 USA Mam. +2.25 ✓ Angularity ✓ Correct Rumps ✓ Outstanding Udders	\$50 \$38
OCD FERRARO – 0200HO11751 BPI(g) 335 USA Type +2.16 USA Mam. +2.12 ✓ DPR +1.6 ✓ Teat Length ✓ Udders	\$45 \$34	Hoogerhorst DG OH RUBELS-RED – 29HO17459* BPI(g) 292 USA Type +2.05 USA Mam. +1.65 ✓ Outcross ✓ Super Linear ✓ Teat Length	\$35 \$28
Coomboona Zipit MIRAND-PP RC – TLGMIRAND* BPI(g) 155 USA Type +2.74 USA Mam. +2.16 ✓ 100% Polled Calves ✓ A2/A2 ✓ High Global Demand	\$32 \$28	OCD Rambo SEABISCUIT – 250HO14140* BPI(g) 302 USA Type +2.23 USA Mam. +1.43 ✓ A2/A2 ✓ Dairy Strength ✓ Correct Rumps	\$34 \$30
Delta NIPPON-P – DELTANIPPON* BPI(g) 403 AUS Type 106 AUS Mam. 102 ✓ A2/A2 ✓ Calving Ease ✓ Highest BPI Single P Sire	\$28	Walnutlawn SIDEKICK – 0200HO10992* BPI(g) 222 USA Type +3.01 USA Mam. 2.49 ✓ Type Specialist ✓ A2/A2 ✓ Dairy Strength	\$40 \$30
Mr Wings NORMAN – STGNORMAN* BPI(g) 208 USA Type +1.67 USA Mam. +1.26 ✓ Sexed Semen Only ✓ Calving Ease ✓ A2/A2	\$50	Riverdown UNSTOPABULL-RED - CBUNSTOPABUL* BPI(g) 129 USA Type +2.80 USA Mam. +2.66 ✓ DPR +0.6 ✓ Tremendous Progeny ✓ Popular Allrounder	\$38

*ALSO AVAILABLE SEXED

Visit www.nationalherd.com.au for full proofs on the above sires

MILK AND MORE!

EUGENIO

A2/A2

Silverridge V Eugenio

0200HO10549

Semex

RRP: \$30^{+GST}



✓ Milk ✓ Calving Ease ✓ Dtr Proven

BPI(i): 262

- Massive Milk from really good Udders.
- Daughter proven, highly reliable.
- Calving Ease (1.7% USA - 98% Rel.), A2 and adds Teat Length.

Pedigree: **Supershot x McCutchen** **NHD Special: \$25^{+GST}**

PRODUCTION

INTERBULL PROOF

ABV	08/20	1,748 DTRS
MILK	+1149	% TEST
PROTEIN	+25	-0.11
FAT	+27	-0.31
		GTPI 2632

WORKABILITY

MILKING SPEED	103
TEMPERAMENT	105
LIKEABILITY	106
Cell Count	166
Mast. Resistance	105



OVERALL TYPE	MAMMARY SYSTEM	INTERBULL		DTRS	PROOF		SURVIVAL	DTR FERT.
107	108			512			114	104
STATURE	ANGULARITY	BODY DEPTH	CHEST WIDTH	PIN WIDTH	PIN SET	FOOT ANGLE	LEGS REAR VIEW	
108	97	94	97	104	99	103	107	
UDDER DEPTH	FORE ATT.	REAR ATT. HGT	REAR ATT. WIDTH	CENT LIGAMENT	F. TEAT PLACEMENT	R. TEAT PLACEMENT	TEAT LENGTH	
108	106	109	103	106	100	98	100	

HOWLER

A2/A2

Pine-Tree Howler

29HO18878

ABS

RRP: \$24^{+GST}



✓ Medium Size ✓ Fat & Protein ✓ Milk

Aust. Type(g) 106 BPI(g): 342 Aust. Mam(g) 108

- Smaller framed, well proportioned cows.
- Rare combination of high milk and good components.
- Calving Ease (1.8% USA – Genomic)

Pedigree: **Charley x Delta**

NHD Special: \$18^{+GST}

PRODUCTION

AUST. GENOMIC PROOF

ABV	08/20	00 DTRS
MILK	+619	% TEST
PROTEIN	+26	+0.18
FAT	+35	+0.13
		GTPI 2665

WORKABILITY

MILKING SPEED	102
TEMPERAMENT	104
LIKEABILITY	106
Cell Count	174
Mast. Resistance	107



OVERALL TYPE	MAMMARY SYSTEM	USA		DTRS	GENOMIC		PROD LIFE	DPR
+0.90	+1.49			00			+5.3	+0.5
STATURE	ANGULARITY	BODY DEPTH	CHEST WIDTH	PIN WIDTH	PIN SET	FOOT ANGLE	LEGS REAR VIEW	
+0.06	+0.86	-0.14	-0.10	+0.83	+0.20	-0.09	-0.32	
UDDER DEPTH	FORE ATT.	REAR ATT. HGT	REAR ATT. WIDTH	CENT LIGAMENT	F. TEAT PLACEMENT	R. TEAT PLACEMENT	TEAT LENGTH	
+0.78	+1.58	+2.00	+1.84	+0.47	+0.43	+0.55	+0.10	

THE BEST & BRIGHTEST GENES FROM OZ

TIRANO-P

Carenda Tirano-P

Genetics Australia

RRP: \$26⁺GST



Dam

✓ Dtr Fertility ✓ Medium Size ✓ Components

BPI(g): 373

- 50% Polled Progeny.
- Elite Udder Improver.
- Medium size with excellent Dtr Fertility.

Pedigree: Jeronimo-P x Main Event **NHD Special: \$20⁺GST**

PRODUCTION

AUST. GENOMIC PROOF

ABV	08/20	0 DTRS
MILK	+290	% TEST
PROTEIN	+20	+0.24
FAT	+37	+0.36

WORKABILITY

MILKING SPEED	103
TEMPERAMENT	101
LIKEABILITY	104
Cell Count	162
Mast. Resistance	105



Sire

OVERALL TYPE	MAMMARY SYSTEM	AUSTRALIAN	DTRS	PROOF	SURVIVAL	DTR. FERT.	
105	109		0		110	110	
STATURE	ANGULARITY	BODY DEPTH	CHEST WIDTH	PIN WIDTH	PIN SET	FOOT ANGLE	LEGS REAR VIEW
102	99	98	99	99	100	97	102
UDDER DEPTH	FORE ATT.	REAR ATT. HGT	REAR ATT. WIDTH	CENT LIGAMENT	F TEAT PLACEMENT	R. TEAT PLACEMENT	TEAT LENGTH
102	104	108	105	106	107	104	95

WIFI

Hindlee Wifi

Genetics Australia

RRP: \$20⁺GST



Sire

✓ Components ✓ Teat Length ✓ Rear Udders

BPI(g): 372

- WIFI will receive great reception !
- Excellent Workabilities.
- High Components and adds Teat Length.

Pedigree: Hotspot-P x Alltime

NHD Special: \$18⁺GST

PRODUCTION

AUST. GENOMIC PROOF

ABV	08/20	0 DTRS
MILK	+326	% TEST
PROTEIN	+28	+0.36
FAT	+32	+0.26

WORKABILITY

MILKING SPEED	101
TEMPERAMENT	104
LIKEABILITY	105
Cell Count	157
Mast. Resistance	105



Frank Robinson
MG Sire

OVERALL TYPE	MAMMARY SYSTEM	AUSTRALIAN		DTRS	PROOF		SURVIVAL	DTR. FERT.
106	107			0			110	106
STATURE	ANGULARITY	BODY DEPTH	CHEST WIDTH	PIN WIDTH	PIN SET	FOOT ANGLE	LEGS REAR VIEW	
104	100	101	99	100	101	100	101	
UDDER DEPTH	FORE ATT.	REAR ATT. HGT	REAR ATT. WIDTH	CENT LIGAMENT	F. TEAT PLACEMENT	R. TEAT PLACEMENT	TEAT LENGTH	
103	104	108	104	105	100	103	102	



YOUR HERD, OUR COMMITMENT.

[WHATS YOUR BEEF?]

FROM HOUSE COW TO HUNDREDS

NHD can supply all the products, labour and expertise for a **Fixed Time AI Program** to suit your needs and budget.

NO JOB TO BIG OR TO SMALL

ANGUS, BAZADAISE, BEEF SHORTHORN, BELGIAN BLUE, BELTED GALLOWAY, BLONDE D'AQUITAINE, BRAHMAN, BRANGUS, CHAROLAIS, DROUGHTMASTER, GELBVIEH,



HEREFORD, HIGHLANDER, LONGHORN, LIMOUSIN, MAINE-ANJOU, MURRAY GREY, POLL HEREFORD, POLL SHORTHORN, SANTA GERTRUDIS, SIMMENTAL, SPECKLE PARK, WAGYU



ALL BREEDS AVAILABLE



- Red River Stock Yards and Accessories.
- Top quality and affordable.
- Design advice, delivery and assembly.



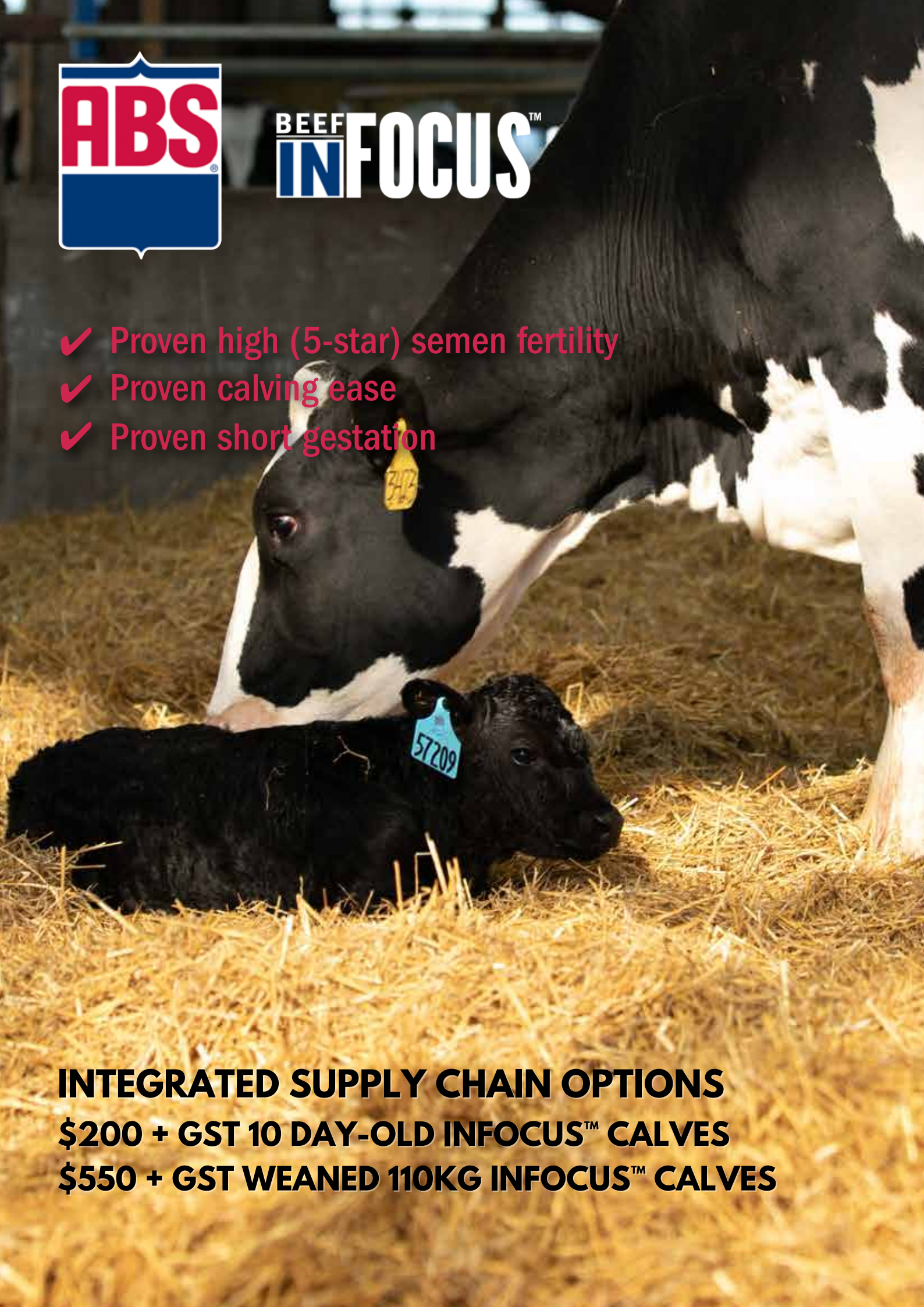
- Regular on farm delivery of liquid nitrogen.
- Specialists in freeze branding services.
- Pregnancy test via blood samples from a minimum of 28 days from last mating.





**BEEF
IN FOCUS™**

- ✓ Proven high (5-star) semen fertility
- ✓ Proven calving ease
- ✓ Proven short gestation



INTEGRATED SUPPLY CHAIN OPTIONS

\$200 + GST 10 DAY-OLD INFOCUS™ CALVES

\$550 + GST WEANED 110KG INFOCUS™ CALVES



YOUR HERD, OUR COMMITMENT.

[CORRECTIVE HERD MATING PROGRAM]

- Highly qualified and professional cow evaluators
- Comprehensive and independent advice
- No strings. No gimmicks. No cost.
- Get serious about Herd Improvement... We are!

- Our evaluators visually assess and record the functional conformation traits needing most improvement for each cow
- Temperament and milking speed are also considered if required
- Our Corrective Mating Program also screens for genetic defects based on the cow's pedigree
- Inbreeding automatically avoided
- Our vastly experienced evaluators can assist in the selection of a team of sires to suit your breeding goals and budget
- The program's key objective is to breed profitable, long lasting, easy to work with cows
- Clearly the best way to enhance the value of your A.I. expenditure



Use the right bulls the right way.



YOUR HERD, OUR COMMITMENT.

[PREGNANCY TESTING WITH MILK SAMPLES]

Utilizing the IDEXX Milk Pregnancy Test. Confirming pregnancy through milk samples - easy, accurate, cost effective.



The Value of Pregnancy Confirmation using Milk Samples

- Use this unobtrusive diagnosis to confirm pregnancy as early as 28 days post-breeding
- Avoid additional animal handling and labour by adding the pregnancy testing option to your scheduled herd test

Using Herd Test samples, the farmer is only required to indicate which samples need to be tested by highlighting the cow number on the paperwork provided.

The testing will then be completed at the National Herd Development centre by fully trained Staff.

Farmer Requirements:

- Cow must be 60 days post calving
- Cow must be 28 days post joining
- Notify NHD several days prior of the need for Pregnancy Testing

GOLDILOCKS COWS – JUST RIGHT !

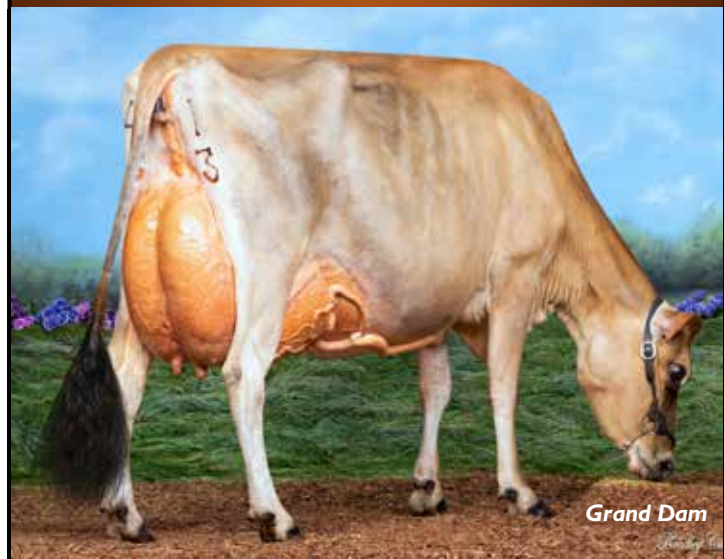
KAZAMM

A2/A2

Cairnbrae Kazamm

29JE4207

ABS



Grand Dam

✓ Overall Type ✓ Udders ✓ Dtr. Fertility

BPI(g): 183

- Early Australian Chrome son with Higher Components.
- Extraordinary Udders.
- If they look a bit like Grandma; you'll want more of them!

Pedigree: **Chrome x Cairnbone**

RRP: \$24^{+GST}

PRODUCTION

AUST. GENOMIC PROOF

ABV	08/20	00 DTRS
MILK	+143	% TEST
PROTEIN	+9	+0.09
FAT	+19	+0.22

WORKABILITY

MILKING SPEED	101
TEMPERAMENT	101
LIKEABILITY	103
Cell Count	136
Mast. Resistance	106



OVERALL TYPE	MAMMARY SYSTEM	AUSTRALIAN		DTRS	PROOF		SURVIVAL	DTR. FERT.
108	113			00			108	102
STATURE	ANGULARITY	BODY DEPTH	CHEST WIDTH	PIN WIDTH	PIN SET	FOOT ANGLE	LEGS REAR VIEW	
106	110	99	95	103	101	104	101	
UDDER DEPTH	FORE ATT.	REAR ATT. HGT	REAR ATT. WIDTH	CENT LIGAMENT	F TEAT PLACEMENT	R. TEAT PLACEMENT	TEAT LENGTH	
104	107	107	107	109	109	109	98	

MATT

A2/A2

Wilsonview IF Matt

7JE01344

WWS

RRP: \$26^{+GST}



Dtr

Patty Jones

✓ Overall Type ✓ Udders ✓ Dtr. Proven

BPI: 226

- No. One Australian Proven sire - Outstanding all round cows.
- Greatly impressed NHD staff on daughter tour.
- Tremendous Farmer Satisfaction. Excellent Semen Fertility.

Pedigree: **Irwin x Tbone**

NHD Special: \$24^{+GST}

PRODUCTION

AUSTRALIAN PROOF

ABV	08/20	3,679 DTRS
MILK	+123	% TEST
PROTEIN	+11	+0.14
FAT	+19	+0.23

WORKABILITY

MILKING SPEED	104
TEMPERAMENT	106
LIKEABILITY	106
Cell Count	153
Mast. Resistance	113



Dtr

English Artist

OVERALL TYPE	MAMMARY SYSTEM	AUSTRALIAN		DTRS	PROOF		SURVIVAL	DTR. FERT.
108	109			1,038			110	99
STATURE	ANGULARITY	BODY DEPTH	CHEST WIDTH	PIN WIDTH	PIN SET	FOOT ANGLE	LEGS REAR VIEW	
102	106	99	100	97	101	99	103	
UDDER DEPTH	FORE ATT.	REAR ATT. HGT	REAR ATT. WIDTH	CENT LIGAMENT	F TEAT PLACEMENT	R. TEAT PLACEMENT	TEAT LENGTH	
105	107	104	103	104	110	104	99	

HIGH POWERED AUSTRALIAN GENOMICS

BOOST

A2/A2

Kings Ville Boost

Genetics Australia

RRP: \$20⁺GST



Dam

Pedigree: **Publican x David**

NHD Special: \$18⁺GST

PRODUCTION

AUST. GENOMIC PROOF

ABV	08/20	00 DTRS
MILK	+4	% TEST
PROTEIN	+21	+0.46
FAT	+35	+0.66

WORKABILITY

MILKING SPEED	104
TEMPERAMENT	103
LIKEABILITY	106
Cell Count	88
Mast. Resistance	97

☒ Components ☒ Conformation ☒ Udders

BPI(g): 250

- Elite early Publican son featuring top class workabilities.

OVERALL TYPE	MAMMARY SYSTEM	AUSTRALIAN	DTRS	PROOF	SURVIVAL	DTR. FERT.
108	108		00		111	99
STATURE	ANGULARITY	BODY DEPTH	CHEST WIDTH	PIN WIDTH	PIN SET	FOOT ANGLE
106	106	104	101	101	103	105
UDDER DEPTH	FORE ATT.	REAR ATT. HGT	REAR ATT. WIDTH	CENT. LIGAMENT	F. TEAT PLACEMENT	R. TEAT PLACEMENT
102	102	105	105	103	110	105
TEAT LENGTH						
96						

JETFIGHTER

Cairnbrae Top Gun

Agri-Gene

RRP: \$20⁺GST



Dam

Pedigree: **Cairnbone x Valentino**

NHD Special: \$16⁺GST

PRODUCTION

AUST. GENOMIC PROOF

ABV	08/20	00 DTRS
MILK	+189	% TEST
PROTEIN	+15	+0.19
FAT	+30	+0.37

WORKABILITY

MILKING SPEED	100
TEMPERAMENT	102
LIKEABILITY	105
Cell Count	118
Mast. Resistance	106

☒ Positive Milk ☒ Semen Fertility ☒ Conformation

BPI(g): 182

- Tremendous Type and Mammary Improver - Great cow family.

OVERALL TYPE	MAMMARY SYSTEM	AUSTRALIAN	DTRS	PROOF	SURVIVAL	DTR. FERT.
109	111		00		108	97
STATURE	ANGULARITY	BODY DEPTH	CHEST WIDTH	PIN WIDTH	PIN SET	FOOT ANGLE
103	107	107	104	104	100	101
UDDER DEPTH	FORE ATT.	REAR ATT. HGT	REAR ATT. WIDTH	CENT. LIGAMENT	F. TEAT PLACEMENT	R. TEAT PLACEMENT
100	105	106	109	106	106	106
TEAT LENGTH						
101						

ASKN

Brookbora Valentino Askn

Genetics Australia

RRP: \$22⁺GST



Dtr

Pedigree: **Valentino x Tbone**

NHD Special: \$20⁺GST

PRODUCTION

AUST. GENOMIC PROOF

ABV	08/20	17 DTRS
MILK	+140	% TEST
PROTEIN	+15	+0.22
FAT	+10	+0.05

WORKABILITY

MILKING SPEED	101
TEMPERAMENT	103
LIKEABILITY	107
Cell Count	118
Mast. Resistance	104

☒ Semen Fertility ☒ Udders ☒ Survival

BPI(g): 176

- Early daughters have made ASKN 'The talk of the Town'.

OVERALL TYPE	MAMMARY SYSTEM	AUSTRALIAN	DTRS	PROOF	SURVIVAL	DTR. FERT.
113	115		11		115	96
STATURE	ANGULARITY	BODY DEPTH	CHEST WIDTH	PIN WIDTH	PIN SET	FOOT ANGLE
107	108	102	101	107	104	105
UDDER DEPTH	FORE ATT.	REAR ATT. HGT	REAR ATT. WIDTH	CENT. LIGAMENT	F. TEAT PLACEMENT	R. TEAT PLACEMENT
103	107	107	110	111	112	111
TEAT LENGTH						
93						

POLL POWER

TLGBASHFUL-P

Kings Ville Bashful-P

TLG

RRP: \$24^{+GST}



Pedigree: **Oliver P x Vanahlem** **NHD Special: \$20^{+GST}**

PRODUCTION

AUST. GENOMIC PROOF

ABV	08/20	00 DTRS
MILK	+469	% TEST
PROTEIN	+17	+0.03
FAT	+20	-0.11

WORKABILITY

MILKING SPEED	101
TEMPERAMENT	107
LIKEABILITY	107
Cell Count	130
Mast. Resistance	104

✓ Milk ✓ Rear Udders ✓ Temperament

BPI(g): 197

- 50% Polled progeny - High Milk yield.

OVERALL TYPE	MAMMARY SYSTEM	AUSTRALIAN		DTRS	PROOF		SURVIVAL	DTR. FERT.
109	110			00			109	98
STATURE	ANGULARITY	BODY DEPTH	CHEST WIDTH	PIN WIDTH	PIN SET	FOOT ANGLE	LEGS REAR VIEW	
103	108	101	101	103	104	101	102	
UDDER DEPTH	FORE ATT.	REAR ATT. HGT	REAR ATT. WIDTH	CENT LIGAMENT	F. TEAT PLACEMENT	R. TEAT PLACEMENT	TEAT LENGTH	
104	106	110	108	105	101	104	94	

HIPWOOD-P

Beulah Hipwood P

A2/A2

Genetics Australia



Pedigree: **Oliver-P x Brax**

RRP: \$18^{+GST}

PRODUCTION

AUST. GENOMIC PROOF

ABV	08/20	00 DTRS
MILK	+310	% TEST
PROTEIN	+15	+0.09
FAT	+23	+0.12

WORKABILITY

MILKING SPEED	102
TEMPERAMENT	105
LIKEABILITY	107
Cell Count	103
Mast. Resistance	99

✓ Milk ✓ Dtr Fertility ✓ Udders

BPI(g): 177

- 50% Polled progeny - Fine looking Oliver-P son !

OVERALL TYPE	MAMMARY SYSTEM	AUSTRALIAN		DTRS	PROOF		SURVIVAL	DRT. FERT.
107	109			00			109	100
STATURE	ANGULARITY	BODY DEPTH	CHEST WIDTH	PIN WIDTH	PIN SET	FOOT ANGLE	LEGS REAR VIEW	
106	105	102	99	103	103	103	105	
UDDER DEPTH	FORE ATT.	REAR ATT. HGT	REAR ATT. WIDTH	CENT LIGAMENT	F. TEAT PLACEMENT	R. TEAT PLACEMENT	TEAT LENGTH	
104	103	111	110	103	102	103	95	

MADILL-P

Kings Ville Madill-P

A2/A2

Agri-Gene

RRP: \$24^{+GST}



Pedigree: **Dillan-P x MacKenzie**

NHD Special: \$20^{+GST}

PRODUCTION

AUST. GENOMIC PROOF

ABV	08/20	00 DTRS
MILK	-505	% TEST
PROTEIN	+5	+0.48
FAT	+26	+1.00

WORKABILITY

MILKING SPEED	104
TEMPERAMENT	100
LIKEABILITY	104
Cell Count	120
Mast. Resistance	103

✓ Components ✓ Dtr. Fertility ✓ Foot Angle

BPI(g): 195

- 50% Polled progeny – Positive Daughter Fertility.

OVERALL TYPE	MAMMARY SYSTEM	AUSTRALIAN	DTRS	PROOF	SURVIVAL	DTR. FERT.	
105	104		00		105	100	
STATURE	ANGULARITY	BODY DEPTH	CHEST WIDTH	PIN WIDTH	PIN SET	FOOT ANGLE	LEGS REAR VIEW
102	103	98	96	94	100	105	98
UDDER DEPTH	FORE ATT.	REAR ATT. HGT	REAR ATT. WIDTH	CENT LIGAMENT	F. TEAT PLACEMENT	R. TEAT PLACEMENT	TEAT LENGTH
104	101	104	104	100	102	102	98

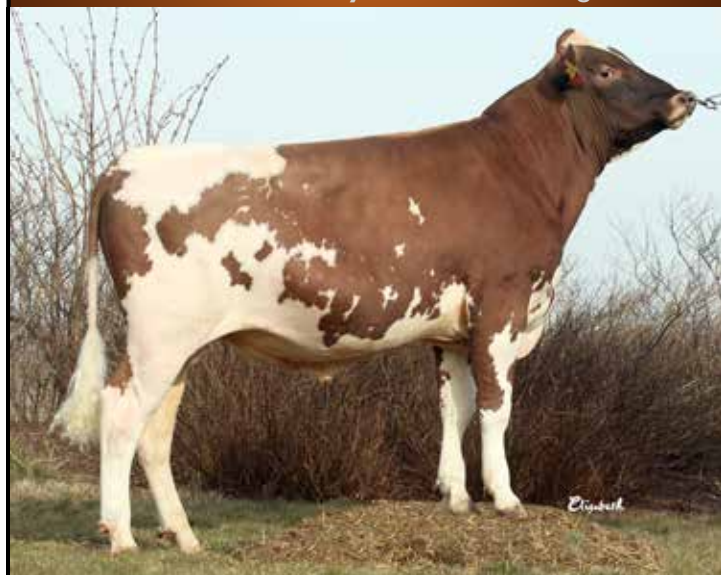
TOP OF THE TREE REDS

VIKRTOKYO

A2/A2

VR Malback Tuomi Tokyo

Viking Genetics



Pedigree: VR Tuomi x V Foske

RRP: \$28+GST

PRODUCTION

AUSTRALIAN PROOF

ABV	08/20	2,731 DTRS
MILK	+820	% TEST
PROTEIN	+35	+0.25
FAT	+36	+0.01

WORKABILITY

MILKING SPEED	100
TEMPERAMENT	100
LIKEABILITY	106
Cell Count	148
Mast. Resistance	106

✓ Production ✓ Shallow Udders ✓ Survival

BPI: 291

• No. One BPI Red Breeds Sire – Australian Daughter Proven.

OVERALL TYPE	MAMMARY SYSTEM	AUSTRALIAN		DTRS	PROOF		SURVIVAL	DRT. FERT.
104	103			1,305			105	101
STATURE	ANGULARITY	BODY DEPTH	CHEST WIDTH	PIN WIDTH	PIN SET	FOOT ANGLE	LEGS REAR VIEW	
108	104	104	107	102	107	102	98	
UDDER DEPTH	FORE ATT.	REAR ATT. HGT	REAR ATT. WIDTH	CENT LIGAMENT	F. TEAT PLACEMENT	R. TEAT PLACEMENT	TEAT LENGTH	
106	97	103	101	105	104	98	100	

ONSTAD-P

252NR11819

ABS



Pedigree: Reitan 2 x Velsvik

RRP: \$26+GST

PRODUCTION

INTERBULL PROOF

ABV	08/20	858 DTRS
MILK	+417	% TEST
PROTEIN	+30	+0.35
FAT	+34	+0.23

WORKABILITY

MILKING SPEED	104
TEMPERAMENT	100
LIKEABILITY	100
Cell Count	92
Mast. Resistance	96

✓ Strength ✓ Width ✓ Production

BPI(i): 260

• 50% Polled progeny - lots of width & strength.

OVERALL TYPE	MAMMARY SYSTEM	INTERBULL		DTRS	PROOF		SURVIVAL	DRT. FERT.
106	101			152			102	104
STATURE	ANGULARITY	BODY DEPTH	CHEST WIDTH	PIN WIDTH	PIN SET	FOOT ANGLE	LEGS REAR VIEW	
107	97	102	109	111	99	100	100	
UDDER DEPTH	FORE ATT.	REAR ATT. HGT	REAR ATT. WIDTH	CENT LIGAMENT	F. TEAT PLACEMENT	R. TEAT PLACEMENT	TEAT LENGTH	
103	103	104	N/A	100	100	90	101	

OKSJALE-P

252NR11229

A2/A2

ABS



Pedigree: Ponnistus x Olstad

RRP: \$22+GST

PRODUCTION

INTERBULL PROOF

ABV	08/20	2,277 DTRS
MILK	+837	% TEST
PROTEIN	+28	+0.11
FAT	+19	-0.24

WORKABILITY

MILKING SPEED	102
TEMPERAMENT	99
LIKEABILITY	99
Cell Count	123
Mast. Resistance	101

✓ Milk Yield ✓ Front Teats ✓ Rear Teats

BPI(i): 218

• 50% Polled Progeny.

OVERALL TYPE	MAMMARY SYSTEM	INTERBULL		DTRS	PROOF		SURVIVAL	DRT. FERT.
100	104			444			100	103
STATURE	ANGULARITY	BODY DEPTH	CHEST WIDTH	PIN WIDTH	PIN SET	FOOT ANGLE	LEGS REAR VIEW	
98	99	100	98	99	101	98	98	
UDDER DEPTH	FORE ATT.	REAR ATT. HGT	REAR ATT. WIDTH	CENT LIGAMENT	F. TEAT PLACEMENT	R. TEAT PLACEMENT	TEAT LENGTH	
97	99	103	N/A	101	112	88	96	

AUSSIE RED

ARBOSCAR

A2/A2

Orana Oscar

Genetics Australia



Pedigree: VFoske x Tosikko

RRP: \$20⁺GST

PRODUCTION

AUSTRALIAN PROOF

ABV	08/20	33 DTRS
MILK	+152	% TEST
PROTEIN	+12	+0.15
FAT	+25	+0.26

WORKABILITY

MILKING SPEED	103
TEMPERAMENT	103
LIKEABILITY	104
Cell Count	126
Mast. Resistance	102

☒ Udders ☒ Components ☒ Milking Speed

BPI: 180

- Highly desirable Udders and Workabilities.

OVERALL TYPE	MAMMARY SYSTEM	AUSTRALIAN		DTRS	PROOF		SURVIVAL	DRT. FERT.
104	105			4			105	100
STATURE	ANGULARITY	BODY DEPTH	CHEST WIDTH	PIN WIDTH	PIN SET	FOOT ANGLE	LEGS REAR VIEW	
101	104	105	106	103	101	106	104	
UDDER DEPTH	FORE ATT.	REAR ATT. HGT	REAR ATT. WIDTH	CENT LIGAMENT	F. TEAT PLACEMENT	R. TEAT PLACEMENT	TEAT LENGTH	
104	108	98	103	105	105	101	96	

ALL OTHER BREEDS AVAILABLE

AYRSHIRE



BROWN SWISS



GUERNSEY



NORMANDE



MONTBELIARDE



KIWI FRIESIAN



NORTHERN VICTORIA

NHD Cohuna

44 Western Road, Cohuna Vic 3568
Phone: 03 5456 2366
Email: info@nationalherd.com.au

NHD Marketing Manager:

Christian Hickey 0428 511 628
Email: christian.hickey@nationalherd.com.au

SALES

Christian Hickey 0428 511 628
Adam Dee 0427 530 011
Stewart Mancer 0429 882 201

NHD Wangaratta

9 Browning Street, Wangaratta Vic 3676
Phone: 03 5722 4422
Email: wangaratta@nationalherd.com.au

SALES

Stewart Mancer 0429 882 201

NHD Kyabram

62 McEwen Road, Kyabram Vic 3619
Phone: 03 5852 2455
Email: herdrecord@nationalherd.com.au
Toll Free: 1300 650 853

WESTERN VICTORIA

NHD Terang

41-43 High Street, Terang Vic 3264
Phone: 03 5592 1177
Email: terang@nationalherd.com.au

AB & Stock Services Supervisor:

Maree Condon 0419 500 474
Email: maree.condon@nationalherd.com.au

SALES

Dylan Jewell 0408 528 823
Brendan Billington 0407 843 909
Gary Richardson 0428 515 288
Neil Holcombe 0408 595 765
Phil McLaughlan 0438 355 132

NHD Mount Gambier

4 Pyne Close, Mount Gambier SA 5290
Phone: 0418 808 682
Email: mtgambier@nationalherd.com.au

SALES

Dylan Jewell 0408 528 823
Brendan Billington 0407 843 909

SOUTH AUSTRALIA

NHD Murray Bridge

98 Eleanor Terrace, Murray Bridge SA 5253
Phone: 08 8532 1392
Email: murraybridge@nationalherd.com.au

NHD South Australia Manager:

Kent Llewellyn 0417 821 179
Email: kent.llewellyn@nationalherd.com.au

SALES

Kent Llewellyn 0417 821 179
David Peglar 0409 547 212
Stuart Graetz 0427 477 717

Agents for **Red River** cattle yards and crushes.

NHD Yankalilla

Lot 2 Mary Street, Yankalilla SA 5203
Phone: 0418 843 419
Email: yankalilla@nationalherd.com.au



NHD SERVICES

- **Independent semen sales and breeding advice**
All breeds - All companies - Beef and Dairy
- **Artificial Insemination service**
*NHIA accredited technicians
Daily service
Timed AI programs, synchronization programs*
- **Artificial breeding merchandise**
AI tanks, tail paint, heat detectors, gloves etc.
- **Independent corrective herd mating program**
Individual cow assessment and sire recommendations
- **Computer generated mating program**
Streamline your breeding program / avoid inbreeding

- **Stock services**
Calf dehorning / freeze branding / All Shooft cattle products
- **Herd testing & recording**
*Many options including EID
Mastitis variety identification*
- **Pregnancy testing**
*Conducted via milk samples or blood samples
Ultrasound scanning*
- **MISTRO computer program**
*Australia's most popular and complete
dairy farm recording program*
- **Dairy chemicals & detergents**
Australia's largest rural EcoLab distributor
- **Liquid nitrogen**
Reliable and regular on-farm delivery service

Limitation of liability: National Herd Development and its employees, cannot guarantee the conception rate or production to be obtained in connection with the use or recommended techniques of the products portrayed within this catalogue. Any person relying upon any information set out herein does so entirely at their own risk and no claims will be entered into notwithstanding any negligence or omission on the part of National Herd Development. National Herd Development is the trading name of Northern Herd Development Co-Operative.